



MASTER OF ENVIRONMENTAL POLICY
DUKE KUNSHAN UNIVERSITY



MASTER OF ENVIRONMENTAL POLICY

The international Master of Environmental Policy (iMEP) program at Duke Kunshan University is a collaboration between the Sanford School of Public Policy and the Nicholas School of the Environment at Duke University. This program trains students to be global environmental leaders with the knowledge and experience of evidence-based environmental policy solutions.

Through this program, students not only benefit from small classes, one-to-one interaction with world-class faculty, a cutting-edge research center and unparalleled career opportunities, but also earn an advanced degree from world-renowned Duke University. iMEP students have the opportunity to immerse themselves in a variety of fields, including but not limited to economics, statistics, energy, climate change, water management, conservation biology, environmental health, environmental law and governance.

iMEP students develop their expertise on a specific topic through an internship and a one-year Masters Project. For students around the world who care about the environment and who want to make a difference, the iMEP program based at DKU is a place where they can meet their mentors and friends, and greet new challenges and discoveries.



TWO CAMPUSES

When you join the iMEP program, you can enjoy the best of two campuses in two countries – Duke University in the United States and Duke Kunshan University in China. Both campuses boast state-of-the-art facilities for work and play. You can be sure your unique campus life experience in the U.S. as well as China will be one you will value for years to come.



Duke, Durham NC

Experience in Durham, NC

Duke University is located in Durham, North Carolina, a city with vibrant research, medical and arts communities. Durham, along with nearby cities Raleigh and Chapel Hill, form the Research Triangle – a growing metropolitan area of more than a million people. Here, you can also find a bustling downtown area, convenient suburban shopping, and the serenity of Duke Forest.



Duke Kunshan

Experience in Kunshan, China

Kunshan, a hub for business and high-tech research and manufacturing companies, is one of the thriving cities in China. Rapid advancement in rail traffic has brought Kunshan people much closer to its surrounding areas: the high-speed train reaches Shanghai and Suzhou within 18 minutes. Meanwhile, you will also have the opportunity to enjoy Kunshan's rich cultural and historical resources.



CURRICULUM

The curriculum consists of 16 courses (48 course hours) spread out over 2 years. Students will be required to enroll in 7 core courses, a full year of the Masters Project course, and 7 elective courses. Students will spend 3/4 of their time at Duke Kunshan and 1/4 at Duke.

YEAR 1 FALL

Environmental Economics
 Statistics and Program Evaluation for Environmental Policy
 Environmental Policy Analysis
 1 Elective

YEAR 1 SPRING

Environmental Science
 Environmental Policy Practicum
 Environmental Policy Process
 1 Elective

YEAR 2 FALL

Master's Project Capstone*
 3 Electives
Option to study abroad at Duke University, North Carolina, U.S.

YEAR 2 SPRING

Master's Project Capstone*
 Environmental Law, Governance and Regulation
 2 Electives

ELECTIVES

Environmental GIS
 Key Topics in International Environmental Policy
 Modeling for Energy Systems Analysis
 Planetary Health and Environmental Epidemiology
 Building an NGO Toolkit: From Design to Monitoring
 Climate Change Economics and Policy
 Environmental Economics II

* Under faculty supervision, small groups of students will work with clients to develop solutions to real-world environmental policy challenges. Courses are subject to change.



CLASS PROFILE

TYPICAL CLASS STATUS

15-25

Class Size

70%

Fresh Graduates

22-26

Age Range

1-2 years

Postgraduate Work Experience

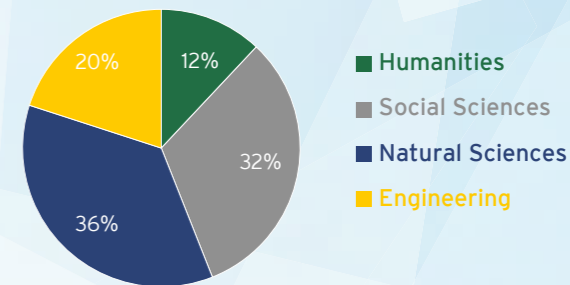
3.4 - 3.8

Undergraduate GPA

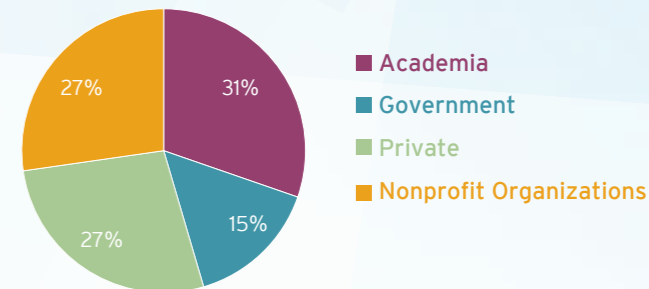
312 - 335

GRE Range

UNDERGRADUATE MAJORS



RECENT CAREER FOCUS



RESEARCH CENTER

The Environmental Research Center at Duke Kunshan University integrates research and educational programs on environmental science and policy. It provides a hub for faculty and students to engage in interdisciplinary and policy-relevant research in China and beyond.

The research center is in close collaboration with the Nicholas School of the Environment, Sanford School of Public Policy, Nicholas Institute for Environmental Policy Solutions, and Energy Initiative at Duke.

The joint research endeavor highlights four areas:

- Environmental Economics
- Ecology and Conservation
- Environmental Governance
- Environmental Health

SAMPLE RESEARCH PROJECTS:

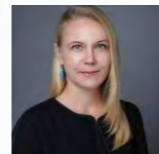
- An economic analysis of the top-level design of China's carbon market | **Junjie Zhang**
- Air pollution, health, and avoidance behavior: evidence from South Korea | **Moon Joon Kim**
- Environmental determinants of healthy longevity in China | **John Ji**
- Smart subsidies for catchment conservation in Malawi | **Patrick Ward**
- Comparison between China and India for impacts of livestock grazing in forests | **Binbin Li**
- Perceiving and debating the socio-economic costs of reducing air pollution in China: the role of environmental NGOs | **Kathinka Furst**



FACULTY



JACKSON EWING
iMEP faculty lead,
Duke Kunshan Director,
Nicholas Institute



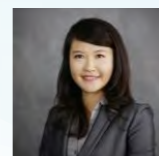
KATHINKA FÜRST
Assistant Adjunct Professor
of Environmental Policy



JOHN S. JI
Associate Director of the
iMEP Program; Assistant
Professor of Environmental
Health Science



MOON JOON KIM
Visiting Assistant
Professor of
Environmental Economics



BINBIN LI
Assistant Professor of
Environmental Science



**DALIA PATIÑO-
ECHEVERRI**
Associate Professor at
the Nicholas School of the
Environment, Duke University



BILLY PIZER
Senior Associate Dean of
Sanford School of Public
Policy; Professor of
Environmental Science and
Policy, Duke University



**MIGUEL ROJAS-
SOTELO**
Adjunct Professor at the
Center for Latin American
and Caribbean Studies,
Duke University



PATRICK S. WARD
Assistant Professor of
Environmental Economics
and Policy



ERIKA WEINTHAL
Lee Hill Snowdon Professor
of Environmental Policy, Duke
University



JUNJIE ZHANG
Director of the iMEP Program;
Associate Professor of
Environmental Economics



JIM ZHANG
Professor of Global and
Environmental Health,
Nicholas School of the
Environment, Duke University

STUDENT STORIES



KELLEY REARDON/ IMEP' 19

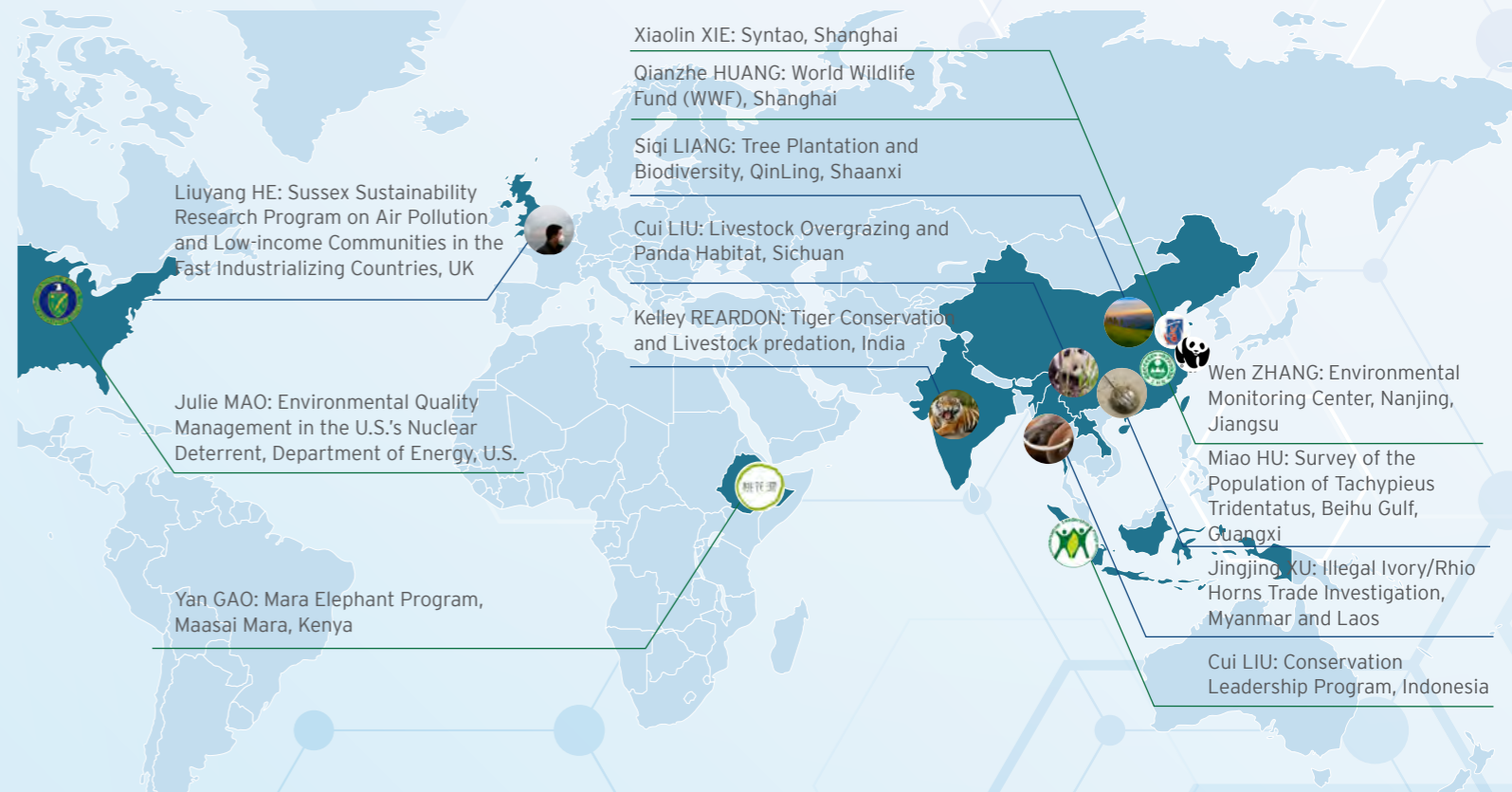
Kelley Reardon is a second-year graduate student in the iMEP program. She focuses on conservation, protected areas, and human-wildlife conflict. Last summer, Kelley ventured to India, where she led a research project in close collaboration with an NGO called *The Centre for Wildlife Studies- India (CWS)*. She developed a socioeconomic survey and conducted household interviews in southern India for one month. As part of Professor Binbin Li's research group, Kelley is also involved with the *livestock overgrazing research project in Sichuan province, China*. She spent part of her summer collecting ecological data in the mountainous bamboo forests of *Wanglang National Nature Reserve*. The iMEP program has provided Kelley with the opportunity to learn about the research process first-hand, from survey design to fieldwork, data analysis, and report writing. Kelley says,

“The opportunity to immerse myself in another culture and spend the summer in the field pushed me to grow as a person and a professional. iMEP has provided an abundance of resources to support my classmates and I as we evolve into leaders in environmental policy. I feel confident in my abilities and prepared for a career in the real world.”

GLOBAL RESEARCH AND INTERNSHIPS

RESEARCH PROJECTS

INTERNSHIP



STUDENT STORIES



XIAOLIN XIE / IMEP' 19

Xiaolin Xie is a second-year student in the iMEP program. She interned at China Emission Exchange Co., Ltd. during the first year winter break, gaining in-depth knowledge and first-hand experience of *China's Emission Trading Scheme*. In the following summer, Xiaolin chose the consulting giant *Syntao Co., Ltd.* for internship and developed the research work on Corporate Social Responsibility (CSR) during the summer into her Master Project titled *"The Effect of CSR on Financial Performance of Power Companies in China."* Xiaolin is also a productive participant of a variety of interdisciplinary research projects at DKU's Environmental Research Center, including Green Finance for the Belt and Road Initiative and Environmental Disclosure of Green Investment. Currently, Xiaolin accepted an offer from PwC, the second largest professional services firm in the world.

“The iMEP program has helped me to improve my skills in statistics, policy writing, public presentation, and economics, which will support my goal to initiate environmental protection in the business world. The iMEP program at DKU is not only an ideal environment for academic study, but also a place for students to find their passions and prepare for their future career.”

COST OF ATTENDANCE *

FOR INTERNATIONAL STUDENTS

	FALL	SPRING
Tuition	\$19,988	\$19,987
Health Insurance	\$1,165	
Housing	\$1,340	\$1,340
Board	\$1,490	\$1,490
Miscellaneous /Personal Expenses	\$920	\$1,150
	\$24,903	\$23,967

FOR CHINESE STUDENTS

	FALL	SPRING
Tuition	¥90,000	¥90,000
Health Insurance	¥220	
Housing	¥8,500	¥8,500
Board	¥9,450	¥9,450
Miscellaneous /Personal Expenses	¥6,000	¥7,500
	¥111,170	¥115,450

* All figures are estimates only, please visit our website for more information about cost of attendance: www.dukekunshan.edu.cn/en/environment/cost-attendance

SCHOLARSHIP & FINANCIAL AID

Scholarship support is available to ensure qualified students can participate in the iMEP program, and Duke Kunshan is dedicated to providing full or partial scholarships to students who need financial support.

All students are automatically considered for merit scholarships based on their Graduate School application. Additional scholarships of varying amounts will be available based on family financial circumstances. Applicants will be given an opportunity to submit supplemental financial information.

U.S. citizens may apply for need-based federal loans by completing the FAFSA.

Scholarships available for iMEP students:

- Chancellors' Scholarship
- Green Future Fund
- Bayeco Environment Fellowship
- Fubon Scholarship

ADMISSION REQUIREMENTS

Applicants must hold the equivalent of a U.S. bachelor's degree from an accredited institution.

- Online application form
- Resume
- Statement of purpose
- Letters of recommendation
- Transcript
- Official GRE score
- Official TOEFL or IELTS score

APPLICATION DEADLINE


PRIORITY DEADLINE: **January 15**

FINAL DEADLINE: **May 31**

Applications submitted after the deadline will be considered on a rolling basis.

T: +86 (0)512 3665 7038 | E: IMEP@dukekunshan.edu.cn
environment.dukekunshan.edu.cn



 @masterofenvironmentalpolicy

 @dukekunshan

 @dku_imep

