

# Choose efficiency and versatility with this productive ADF and flatbed scanner

Enjoy effortless, high-quality scanning of multiple document sizes and formats, including photos, in one compact device featuring an integrated automatic document feeder and flatbed unit.



## The key benefits of imageFORMULA DR-F120

- Productive, fast 20ppm duplex document scanning with 50-sheet ADF
- Scan books, magazines or fragile materials with the integrated flatbed
- Superb image quality - up to 2400dpi scanning
- Step-by-step, icon-based software user interface
- Scan with ease using CaptureOnTouch and one-touch job buttons
- Scan to editable-PDF and connect to your cloud applications
- Achieve colour accuracy with 3-Dimensional Colour Correction function
- High energy-efficiency - less than 20W in operation

Flatbed & ADF

20ppm

50-sheet ADF

800 scans / day

2400dpi

CaptureOnTouch

USB connection

One touch scanning

## VERSATILE DESIGN, POWERFUL FEATURES

### Maximised productivity

Capture various types of documents accurately and efficiently with the DR-F120: a compact all-in-one scanning solution that offers both an automatic document feeder (ADF) and flatbed. You can save yourself valuable time using the 50-sheet document feeder, with its faster 20ppm scanning speeds. The DR-F120 can be relied on to get through your work with capability to handle up to 800 scans a day.



### Superior image quality

The DR-F120 delivers superior quality results time after time, due to its 2400dpi scanning, wide range of built-in image enhancement features and Canon's renowned imaging technology. You'll achieve unprecedented colour accuracy that stays true to the original document via the scanner's 3-Dimensional Color Correction function.



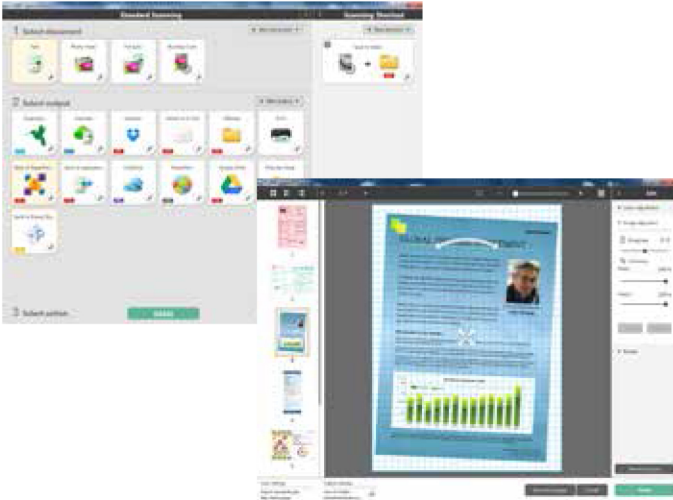
### Versatile paper handling

The DR-F120 gives you complete flexibility to scan a wide range of materials despite its compact body size and small footprint. The ADF path accommodates A4-width documents, and media of up to 1,000mm in length. You'll enjoy increased reliability and time-savings when scanning mixed documents with Canon's dependable separation and feed roller mechanism. The flatbed scanner is ideal for handling media like books, passports or magazines, and effortlessly captures pages up to legal size. It's equally at home with photos or other thick, thin and delicate documents.



## SOFTWARE

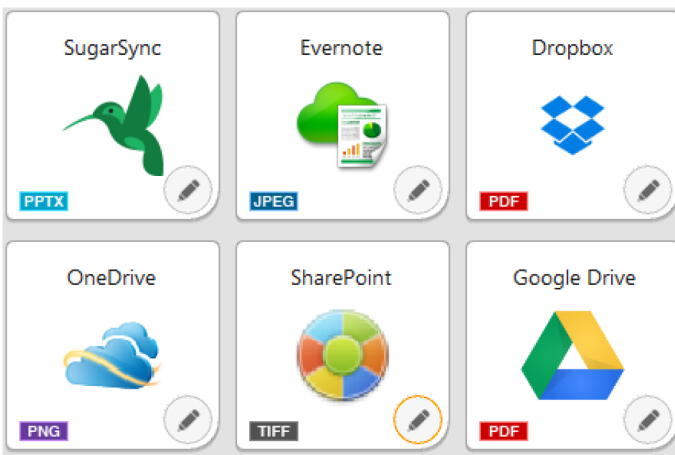
### Capture OnTouch



The DR-F120 offers a simple and intuitive scanning experience using Canon's CaptureOnTouch software. Users can scan, edit and send their documents even more easily with this versatile scanning solution. Its step-by-step, icon-based user interface lets users quickly convert their paper documents to multiple file formats (PDF, TIFF, JPEG, BMP, PNG and PowerPoint). CaptureOnTouch is equally capable as a simple document filing solution that lets users scan and create searchable PDF documents - including easy text-based search and retrieval.

#### Cloud service plug-ins

The CaptureOnTouch software includes plug-ins for connecting to cloud and ECM services such as Evernote, Google Drive™, Microsoft SharePoint®, SugarSync, OneDrive (Windows only) and Dropbox.



#### Easy to own and maintain

DR-F120 is easy to maintain because of its user-friendly design. The feed rollers are user-replaceable, which means you won't incur the cost of calling out a service technician. Your costs stay low due to the scanner's high energy-efficiency of less than 20W in operation.

# INTUITIVE, EASY TO USE



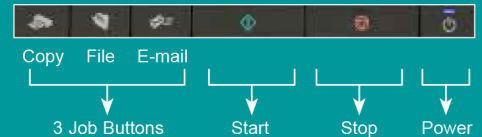




## Simple, user friendly operation

Easy "one-touch" job button scanning directly from the scanner operation panel

Achieve superb results with just a single touch of a button using the Full Auto Mode that automatically applies the best settings for each scanned image. Built-in tools eliminate blank pages and automatically detect paper size and text orientation; while the automatic deskew feature straightens documents fed at an angle. Frequent tasks can be made even simpler by assigning them to the 3 job buttons on the scanner panel.



## Technical Specifications

### GENERAL PRODUCT INFORMATION

<b>Type</b>	Desktop Type Flatbed Scanner with ADF
<b>Scanning sensor unit</b>	CMOS CIS 1 Line Sensor
<b>Optical resolution</b>	600dpi ADF / 1200dpi Flatbed
<b>Light source</b>	RGB LED
<b>Scanning side</b>	Front / Back / Duplex
<b>Interface</b>	High speed USB 2.0
<b>Dimensions (W x D x H)</b>	Tray Closed : 469 (W) x 335 (D) x 120 (H) mm Tray Opened: 495 (W) x 335 (D) x 201 (H) mm
<b>Weight</b>	Approx. 4.6kg
<b>Power requirements</b>	AC220 - 240V (50/60Hz)
<b>Power consumption</b>	Scanning 19.9W or less, Sleep Mode 2.5W or less, Power Turned Off less than 0.5W
<b>Operating environment</b>	10 - 32.5 °C (50 - 90.5 °F), Humidity: 20 - 80% RH
<b>Environmental compliance</b>	RoHS and ENERGY STAR

### SCANNING SPECIFICATIONS

<b>Scanning speed (A4, 200dpi)</b>	ADF: 20ppm / 36ipm ADF: 10ppm / 18ipm
<b>Black and White Colour</b>	ADF: 20ppm / 36ipm ADF: 10ppm / 18ipm
<b>Output resolution</b>	150 x 150dpi, 200 x 200dpi, 240 x 240dpi, 300 x 300dpi, 400 x 400dpi, 600 x 600dpi, 1200 x 1200dpi, 2400 x 2400dpi
<b>Output mode</b>	Black & White, Error Diffusion, Advanced Text Enhancement, Advanced Text Enhancement II, 8-bit Greyscale (256-Level), 24-bit Colour
<b>Suggested Daily Duty Cycle</b>	Approx 800 scans/day

### DOCUMENT SPECIFICATIONS

<b>Width</b>	ADF: 51 - 216mm Flatbed: up to 216mm
<b>Length</b>	ADF: 89 - 356mm Flatbed: up to 356mm
<b>Thickness</b>	ADF: 35 - 128g/m <sup>2</sup> (0.05 - 0.15mm) up to 1000mm
<b>Long document mode</b>	Width: 51mm Length: 89mm Thickness 128 - 209g/m <sup>2</sup>
<b>Card scanning</b>	Retard Roller Method
<b>Paper separation</b>	50 sheets (80g/m <sup>2</sup> )
<b>Feeder capacity</b>	

### SPECIAL FEATURES

Automatic Page Size Detection, Deskew, Auto Colour Detection, Text Enhancement, Skip Blank Page, Text Orientation, MultiStream, Preset Gamma Curve, Prescan, Edge Emphasis, Colour Dropout (RGB), Colour Enhancement (RGB), Moire Reduction, Character Emphasis, Prevent Bleed Through/ Remove Background, Remove Shadow, Border Removal, Erase Dot, Erase Notch, Punch Hole Removal, Apply corrections for photos, Double Feed Detection (By Length), Automatic Feeder/Flatbed detection, Rapid Recovery System

### BUNDLED SOFTWARE

<b>Windows</b>	ISIS /TWAIN Driver (Windows XP/VISTA/7/8/8.1/ Server 2008/ Server 2012) CaptureOnTouch 3 EMC Captiva Cloud Runtime Controls
----------------	--

### CONSUMABLES & ACCESSORIES

<b>Consumables</b>	Exchange Roller Kit
<b>Accessories</b>	Silex SX-DS-4000U2

Some images are simulated for clarity of reproduction. All data is based on Canon's standard testing methods. This leaflet and the specifications of the product have been developed prior to the date of product launch. Final specifications are subject to change without notice.™ and ©, all company and / or product names/ logos are trademarks and / or registered trademarks of their respective manufacturers in their markets and / or countries.



PT. PRISMA TEKNOLOGI INFORMATIKA  
Gedung Lina suite 203  
HR Rasuna Said Block B7  
Jakarta 12910  
Ph +62-21-5262709/+62-21-5263117  
Fax. +62-21-5262710  
E-mail: marketing@prismatek.co.id

prismatek Canon