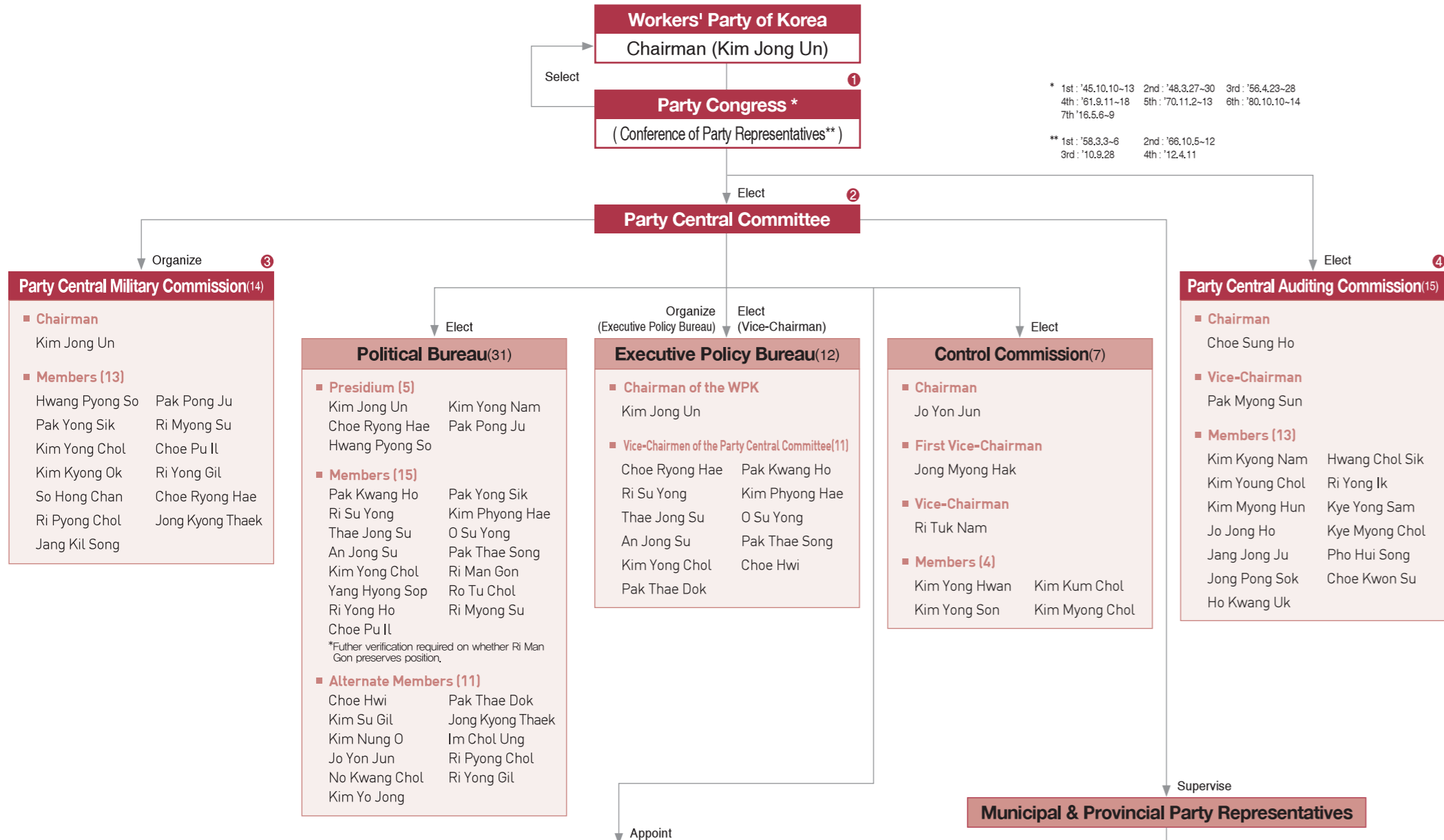


Organizational Chart of North Korean Leadership

(As of January 2018)

Party Organs

※ This leadership chart has been compiled based on the results of the 2nd Plenary Session of the 7th Party Central Committee (held on Oct. 7th, 2017)



Departments & Offices(19)				
Organization & Guidance Department Choe Ryong Hae(essumell)	Propaganda & Agitation Department Pak Kwang Ho	Cadres Department Kim Phyeong Hae	Light Industry Department An Jong Su	Economic Affairs Department O Su Yong
Science & Education Department Choe Dong Myong	International Department Ri Su Yong	Military Department Kim Jung Hyop	Machine-Building Industry Department Thae Jong Su	Working Organization Department Ri Il Hwan
Agriculture Department Ri Chol Man	Party History Institute Ryang Won Ho	Document Archive Kim Jung Hyop	Civil Defense Department Ri Yong Rae	Appeals Office
Finance Accounting Department Kim Yong Su	General Affairs Department	United Front Department Kim Yong Chol	Office No.39 Shin Ryong Man	

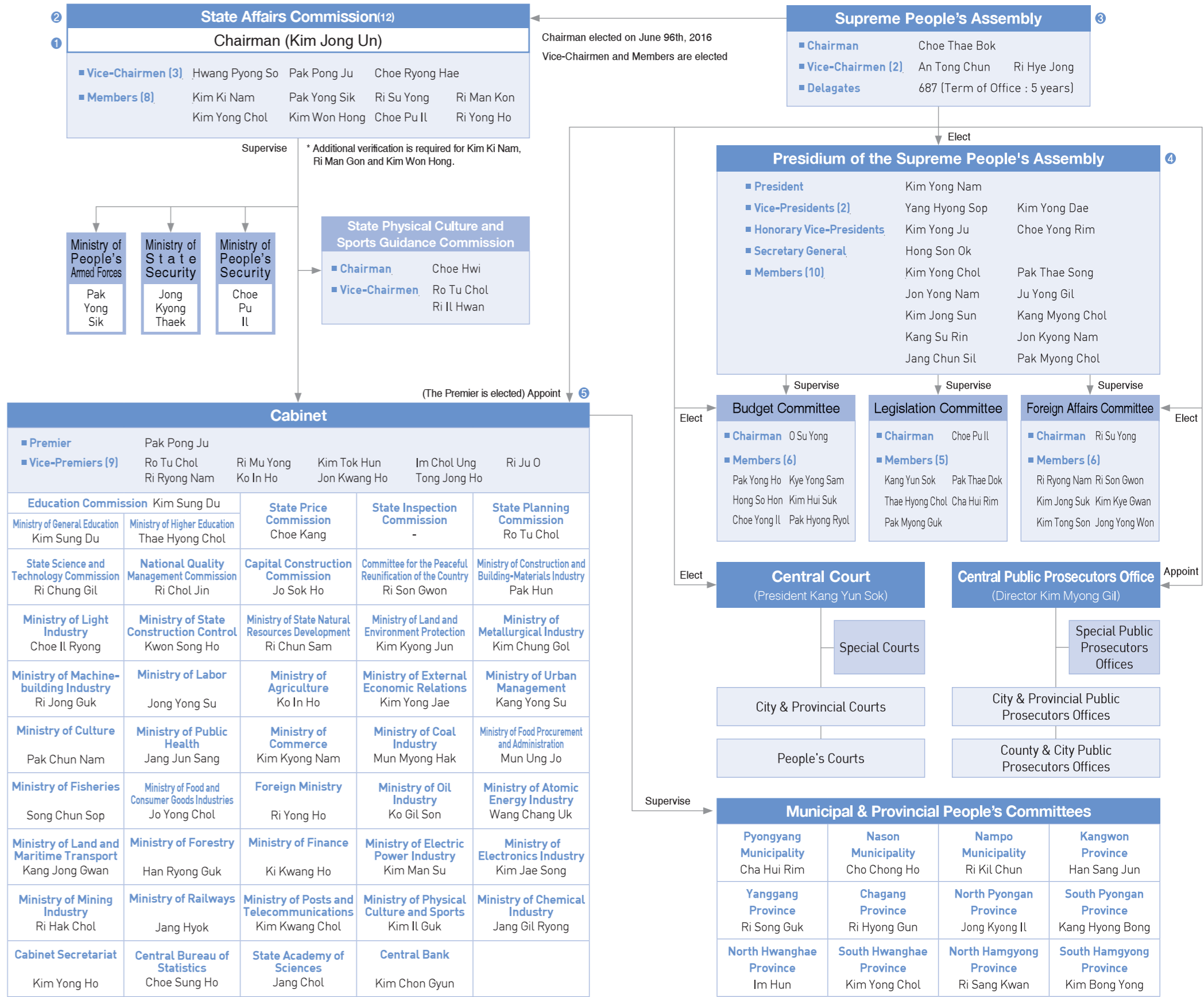
* Additional verification is required for departments managed by Ju Yong Sik and Kim Man Song

- 1 The Party Congress and the Conference of Party Representatives set party lines and policies, adopt doctrines and rules, select Chairman of the WPK, and discuss various kinds of party's projects.
- 2 The Party Central Committee organizes and supervises all of the party's projects, and manages the party's finances. (It convenes the plenary meeting more than once a year.)
 - The Political Bureau organizes and supervises all of the party's projects.
 - The Executive Policy Bureau discusses and determines the party's internal projects, and organizes and supervises the implementation.
 - The Control Commission inspects the party's rules and disciplines.

- 3 The Party Central Military Commission organizes and supervises all of the military projects, establishes the party's military line and policies, and supervises national defense projects.
- 4 The Party Central Auditing Commission inspects the party's financial management projects.
- 5 Party organs including the Korean People's Army, the Korean People's Internal Security Forces and the Ministry of Railways are also provincial party level organs. (These organs have Party Representatives and a Party Committee, and they are supervised by the Party Central Committee.)

Government Organs

※ This leadership chart has been compiled based on the results of the 13th Supreme People's Assembly's 5th Plenary Meeting(held on Apr. 11th, 2017). Necessary to reflect the result of the next Supreme People's Assembly.



- 1 The Chairman of the State Affairs Commission supervises overall national projects, appoints major national officials, ratifies and abrogates treaties, and declares an emergency, wartime and mobilization order, and organizes and supervises the National Defense Commission during wartime.
- 2 The State Affairs Commission discusses and determines important policies including national defense construction projects.
- 3 The Supreme People's Assembly legislates, amends, and supplements the Constitution and all laws and regulations and establishes basic principles for foreign and domestic policies.

- 4 The Presidium of the Supreme People's Assembly amends and supplements laws according to department, and supervises law abidance of each organ. (When the Supreme People's Assembly is in recess, the Presidium of the SPA organizes or appoints the cabinet.)
- 5 The Cabinet implements the national policies and conducts all administrative works including budget compilation.