



Transit timing observations from Kepler: III. Confirmation of four multiple planet systems by a Fourier-domain study of anticorrelated transit timing variations

The Harvard community has made this
article openly available. [Please share](#) how
this access benefits you. Your story matters

| | |
|-------------------|---|
| Citation | Steffen, Jason H., Daniel C. Fabrycky, Eric B. Ford, Joshua A. Carter, Jean-Michel Désert, Francois Fressin, Matthew J. Holman, et al. 2012. "Transit Timing Observations from Kepler: III. Confirmation of Four Multiple Planet Systems by a Fourier-Domain Study of Anticorrelated Transit Timing Variations." <i>Monthly Notices of the Royal Astronomical Society</i> 421 (3) (February 22): 2342–2354. doi:10.1111/j.1365-2966.2012.20467.x. |
| Published Version | doi:10.1111/j.1365-2966.2012.20467.x |
| Citable link | http://nrs.harvard.edu/urn-3:HUL.InstRepos:29990199 |
| Terms of Use | This article was downloaded from Harvard University's DASH repository, and is made available under the terms and conditions applicable to Open Access Policy Articles, as set forth at http://nrs.harvard.edu/urn-3:HUL.InstRepos:dash.current.terms-of-use#OAP |

Transit Timing Observations from *Kepler*: III. Confirmation of 4 Multiple Planet Systems by a Fourier-Domain Study of Anti-correlated Transit Timing Variations

Jason H. Steffen¹, Daniel C. Fabrycky^{2,3}, Eric B. Ford⁴, Joshua A. Carter^{5,3}, Jean-Michel Désert⁵, Francois Fressin⁵, Matthew J. Holman⁵, Jack J. Lissauer⁶, Althea V. Moorhead¹, Jason F. Rowe^{7,6}, Darin Ragozzine⁵, William F. Welsh⁸, Natalie M. Batalha⁹, William J. Borucki⁶, Lars A. Buchhave¹⁸, Steve Bryson⁶, Douglas A. Caldwell^{7,6}, David Charbonneau⁵, David R. Ciardi⁸, William D. Cochran²⁰, Michael Endl²⁰, Mark E. Everett¹⁵, Thomas N. Gautier III¹¹, Ron L. Gilliland²¹, Forrest R. Girouard^{6,22}, Jon M. Jenkins^{7,6}, Elliott Horch¹⁶, Steve B. Howell⁶, Howard Isaacson¹³, Todd C. Klaus^{6,22}, David G. Koch⁶, David W. Latham⁵, Jie Li^{7,6}, Philip Lucas¹², Phillip J. MacQueen²⁰, Geoffrey W. Marcy¹³, Sean McCauliff¹⁰, Christopher K. Middour^{6,22}, Robert L. Morris^{7,6}, Fergal R. Mullally^{7,6}, Samuel N. Quinn⁵, Elisa V. Quintana^{7,6}, Avi Shporer^{17,18}, Martin Still^{17,6}, Peter Tenenbaum^{7,6}, Susan E. Thompson^{7,6}, Joseph D. Twicken^{7,6}, Jeffery Van Cleve^{7,6}

¹ Fermilab Center for Particle Astrophysics, P.O. Box 500, MS 127, Batavia, IL 60510

² UCO/Lick Observatory, University of California, Santa Cruz, CA 95064, USA

³ Hubble Fellow

⁴ Astronomy Department, University of Florida, 211 Bryant Space Sciences Center, Gainesville, FL 32111, USA

⁵ Harvard-Smithsonian Center for Astrophysics, 60 Garden Street, Cambridge, MA 02138, USA

⁶ NASA Ames Research Center, Moffett Field, CA, 94035, USA

⁷ SETI Institute, Mountain View, CA, 94043, USA

⁸ NASA Exoplanet Science Institute/California Institute of Technology, Pasadena, CA 91125 USA

⁹ Astronomy Department, San Diego State University, San Diego, CA 92182-1221, USA

¹⁰ San Jose State University, San Jose, CA 95192, USA

¹¹ Jet Propulsion Laboratory/California Institute of Technology, Pasadena, CA 91109, USA

¹² Centre for Astrophysics Research, University of Hertfordshire, College Lane, Hatfield, AL10 9AB, England

¹³ University of California, Berkeley, Berkeley, CA 94720

¹⁴ Bay Area Environmental Research Institute/NASA Ames Research Center, Moffett Field, CA 94035, USA

¹⁵ National Optical Astronomy Observatory, Tucson, AZ 85719, USA

¹⁶ Department of Physics, Southern Connecticut State University, New Haven, CT 06515, USA

¹⁷ Las Cumbres Observatory Global Telescope, Goleta, CA 93117, USA

¹⁸ Department of Physics, Broida Hall, University of California, Santa Barbara, CA 93106, USA

¹⁹ Niels Bohr Institute, Copenhagen University, DK-2100 Copenhagen, Denmark

²⁰ McDonald Observatory, The University of Texas, Austin TX 78730, USA

²¹ Space Telescope Science Institute, Baltimore, MD 21218, USA

²² Orbital Sciences Corporation/NASA Ames Research Center, Moffett Field, CA 94035, USA

27 January 2012

ABSTRACT

We present a method to confirm the planetary nature of objects in systems with multiple transiting exoplanet candidates. This method involves a Fourier-Domain analysis of the deviations in the transit times from a constant period that result from dynamical interactions within the system. The combination of observed anti-correlations in the transit times and mass constraints from dynamical stability allow us to claim the discovery of four planetary systems Kepler–25, Kepler–26, Kepler–27, and Kepler–28, containing eight planets and one additional planet candidate.

Key words: celestial mechanics; stars: individual (KIC 4349452, KIC 9757613, KIC 5792202, KIC 6949607); methods: data analysis; techniques: photometric

1 INTRODUCTION

To date, NASA’s *Kepler* mission has announced the discovery of nearly a thousand candidate exoplanet systems including a significant number of systems with multiple transiting objects (Borucki et al. 2011; Steffen et al. 2010; Latham et al. 2011). Such a large sample of exoplanet candidates can provide valuable insight into the nature of the general population of planets and planetary systems, even if there were a sizeable fraction that are false-positive signals. Nevertheless, a sample of systems that are known with high confidence to be planetary enables a significant amount of additional science both for individual objects and for the planet population generally. Moreover, it yields more efficient use of resources in these endeavors by indicating those systems where supplementary observations will likely be most fruitful.

Historically, planetary systems have been confirmed primarily by making dynamical measurements of the planet mass and orbital properties via radial velocity (RV) measurements. More recently (Holman et al. 2010; Lissauer et al. 2011a), this mass measurement has been accomplished by detailed modeling of transit timing variations, or TTVs—the deviations from a constant period that result from gravitational perturbations among multiple planets and their host star (Agol et al. 2005; Holman and Murray 2005). Another contemporary development is the validation of planets by the process of elimination—excluding false positive signals by scrutinizing a wide variety of data on individual systems (e.g., BLENDER Torres et al. (2011); Fressin et al. (2011)). Yet detailed dynamical modeling of systems, the gathering of RV and other complementary data, and the synthesis of this information is time consuming for individual systems and is prohibitive for the entirety of the list of *Kepler* objects of interest (KOIs). The development of simpler, and more rapid, validation techniques is crucial for the timely advancement of the exoplanetary science enabled by *Kepler*.

In this work, we present a method to confirm the planetary nature of candidates in multiple transiting systems. Complementary methods with the same goal are simultaneously being developed by Ford et al. (2011a), Fabrycky et al. (2011), and Lissauer et al. (2011c). These methods are specifically intended to confirm planetary systems using a small number of assumptions and easily implemented analysis. The method presented here broadly uses conservation of energy and dynamical stabil-

ity to show that alternative (non-planetary) explanations of the observed photometric data are excluded with high confidence and that the objects must be both dynamically interacting and planetary in mass. Specifically, the properties of the TTV signature for the multiple candidates and the maximum allowed masses for objects in the systems demonstrate that exoplanet candidates in several *Kepler* systems are indeed planets. Generally speaking, it is difficult to construct astrophysical false positives that can mimic a multi-transiting system (Lissauer et al. 2011b; Latham et al. 2011; Ragozzine and Holman 2010). Yet, the analysis presented herein does not invoke this enhancement in planet likelihood, and we confirm the discovery of 8 total planets in the systems Kepler–25 (KOI 244, KIC 4349452), Kepler–26 (KOI 250, KIC 9757613), Kepler–27 (KOI 841, KIC 5792202), and Kepler–28 (KOI 870, KIC 6949607).

This paper will proceed as follows. First, we discuss the essential components of the photometric data reduction and the stellar properties (§2). The analysis method is discussed in §3. The results of the analysis for the various systems is found in §4. We discuss the implications of these results in §5. Finally, additional observational information and photometric diagnostics for some of the systems are given in §A.

2 KEPLER DATA AND PHOTOMETRIC ANALYSIS

The *Kepler* mission was designed to detect terrestrial-size planets in the habitable zone of the host star, necessitating both a large sample size and sensitivity to a much larger range of orbital distances than ground-based surveys (Borucki et al. 2010). The instrument is a differential photometer with a wide (~ 100 square degrees) field-of-view (FOV) that continuously and simultaneously monitors the brightness of approximately 150,000 main-sequence stars. A discussion of the characteristics and on-orbit performance of the instrument and spacecraft is presented in Koch et al. (2010).

2.1 Transit identification and data validation

Each of the systems considered here was found using the Transiting Planet Search Pipeline (TPS) which identi-

Table 1. Excerpt of Transit Times for Kepler Transiting Planet Candidates

| KOI | n | t_n BJD-2454900 | TTV _n (d) | σ_n (d) |
|--------|----|----------------------------------|-------------------------|-------------------|
| 244.01 | | $12.720355 + n \times 86.087064$ | | |
| 244.01 | 0 | 86.0821 | -0.0050 | 0.0029 |
| 244.01 | 2 | 111.5291 | 0.0014 | 0.0008 |
| 244.01 | 3 | 124.2463 | -0.0019 | 0.0011 |
| 244.01 | 4 | 136.9696 | 0.0011 | 0.0010 |
| 244.01 | 5 | 149.6898 | 0.0010 | 0.0008 |
| 244.01 | 6 | 162.4084 | -0.0008 | 0.0009 |
| 244.01 | 7 | 175.1296 | 0.0000 | 0.0008 |
| 244.01 | 8 | 187.8486 | -0.0013 | 0.0011 |
| 244.01 | 9 | 200.5706 | 0.0003 | 0.0024 |
| 244.01 | 10 | 213.2911 | 0.0005 | 0.0005 |
| | | ⋮ | | |

fies significant transit-like features, or Threshold Crossing Events (TCE), in the Kepler light curves (Jenkins et al. 2010). Data showing TCEs are then passed to the Data Validation (DV) pipeline (Wu et al. 2010). The DV pipeline fits a transiting planet model to the data, removes it from the light curve, and returns the result to TPS in an effort to find additional transit features. DV also completes a suite of statistical tests that are applied to the data after all TCEs are identified in an effort to assess the likelihood of false-positives. The results of these diagnostic tests are consistent with the planet interpretation and do not warn of potential pitfalls.

After pipeline data processing and the photometry extraction, the time series is detrended as described in Ford et al. (2011b) in order to measure important stellar and planet candidate parameters. A first estimate for the stellar mass and radius (M_* and R_*) is obtained by comparing the stellar T_{eff} and $\log g$ values derived from an analysis of the stellar spectrum or from the Kepler Input Catalog (KIC, Brown et al. 2011) to a set of CE-SAM (Code d'Evolution Stellaire Adaptatif et Modulaire, Morel (1997)) stellar evolution models computed in steps of $0.1 M_{\odot}$ for solar composition.

With M_* and R_* fixed to their initial values, a transit fit is then computed to determine the orbital inclination, planetary radius, and depth of the occultation (passing behind the star) assuming a circular orbit. The transit lightcurve is modeled using the analytic expressions of Mandel and Agol (2002) using non-linear limb darkening parameters derived for the Kepler bandpass (Claret 2000). The best fit model is found using a Levenberg-Marquardt minimization algorithm (Press et al. 1992). The best fit transit model is then removed from the lightcurve and the residuals are used to fit for the characteristics of next transiting candidate identified by TPS. The transit times obtained from these model fits are used in our analysis below and a brief excerpt is given in Table 1. Since these systems show visible TTVs we display their light curves in Figures 1, 2, 3, and 4, where data are prepared (with TTVs corrected) as described in Holman et al. (2010).

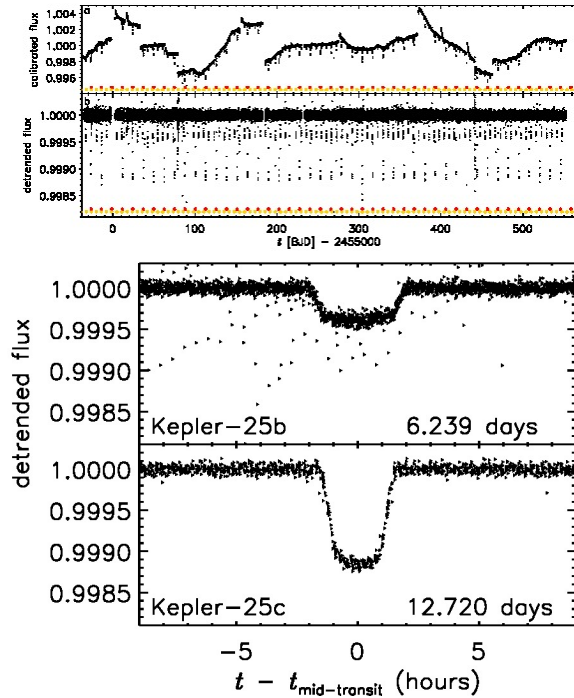


Figure 1. Top) Lightcurve and detrended lightcurve for Kepler-25. The small dots near the bottom of the panels indicate the locations of the planetary transits. Bottom) Phase-folded lightcurves (corrected for TTVs) for the two planets in the system. The periods of these planets are 6.24 days for Kepler-25b and 12.72 days for Kepler-25c. The excess scatter observed (particularly in the top panel) are due to anomalous, abrupt changes in reported flux being passed through the detrending algorithm.

2.2 Centroid analysis

A centroid measurement, which gives the displacement of the flux centroid during transit compared with the flux centroid in data taken out of transit, is calculated for each candidate planet. The proper interpretation of the value derived for the centroid motion requires knowledge of the positions and brightnesses of the stars near the target. Motion can result in two different ways; a nearby star with the transit signature or a nearby star (or stars) that dilute the light from the target star, which has the transit signal. An analysis of the centroid motion can give important information in identifying the host of the transiting object and can help disentangle complicated, projected systems blended within the target aperture.

One target star Kepler-25 is very bright ($K_p = 10.7$) and saturates the central pixels of its image on the photometer. Thus, the centroid information can only identify displacements of the size of a pixel and is of limited use. The centroid of a second target, Kepler-27, does displace significantly from the nominal location during transit. The dimness of Kepler-27 ($K_p = 15.9$) presents a challenge to the centroid analysis. A higher-resolution image of the target taken in the J band with the United Kingdom Infrared Telescope (UKIRT) shows a faint, neighboring star ($K_p = 19.5$) that is 2 arcseconds to the northeast of the target and that is not identified in the KIC (see Figure 5). The centroid motion induced by this faint

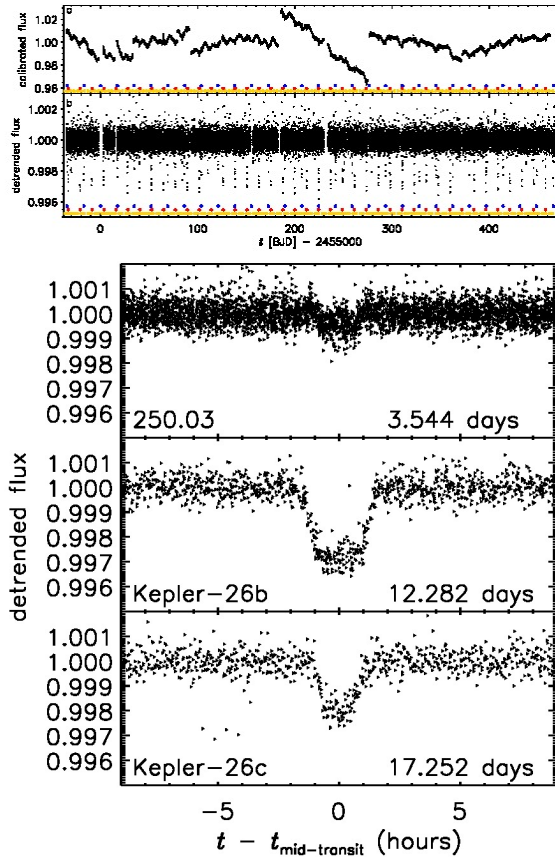


Figure 2. Top) Lightcurve and detrended lightcurve for Kepler-26. The small dots near the bottom of the panels indicate the locations of the planetary transits. Bottom) Phase-folded lightcurves (corrected for TTVs) for the two planets and the planet candidate in the system. The periods of these objects are 12.28 days, 17.25 days, and 3.54 days for planets b and c and the candidate KOI-250.03 respectively.

star is consistent with the interpretation that the faint star has constant brightness and the transit event arises from the target. The centroid analysis of the remainder of the eight planets shows no displacement beyond the 3σ radius of confusion for each target and therefore do not raise concern. When modeling the planet and stellar properties for each of these systems, additional light from neighboring stars has been accounted for.

2.3 Stellar properties

The *Kepler* Follow-up Observing Program (FOP) has obtained spectra of the host stars for three of the four systems (Kepler-25, Kepler-26, and Kepler-27). The spectra were inspected for a prominent second set of spectral lines which would indicate the presence of an additional star. For host stars with modest SNR follow-up spectroscopy (roughly 20 per resolution element from the 1.5m Tillinghast Reflector at FLWO), we fit spectra to a library of theoretical spectra using the tools of Buchhave et al. (2011). For host stars with high-SNR follow-up spectroscopy from Keck, we also report stellar parameters derived from a Spectroscopy Made Easy (SME) analysis

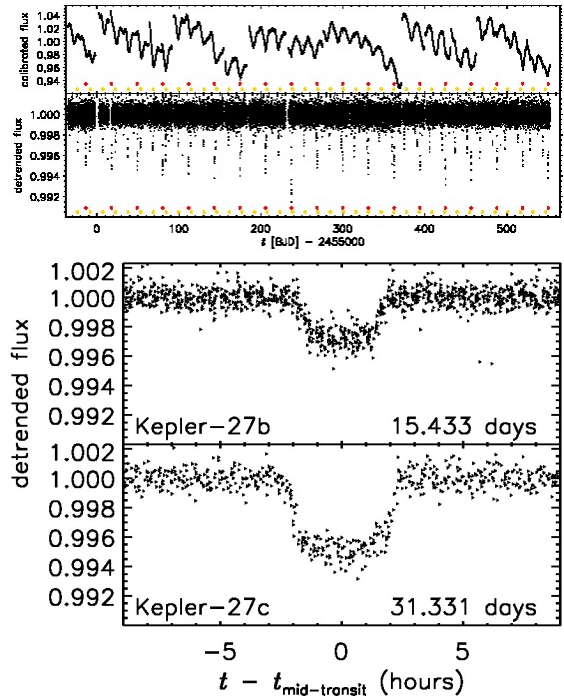


Figure 3. Top) Lightcurve and detrended lightcurve for Kepler-27. The small dots near the bottom of the panels indicate the locations of the planetary transits. Bottom) Phase-folded lightcurves (corrected for TTVs) for the two planets in the system. The periods of these planets are 15.33 days and 31.33 days for b and c respectively.

(Valenti and Piskunov 1996; Fischer and Valenti 2005) with mass and radius estimates generated from Yonsei-Yale isochrones. In cases without follow-up spectroscopy, we adopt the stellar parameters from the KIC (Brown et al. 2011). The adopted stellar parameters are given in Table 2 along with the estimate of contamination from nearby stars derived from the KIC.

3 PLANET CONFIRMATION METHOD

In a system with multiple planets, those planets in close proximity to or librating within mean-motion resonance (MMR) will induce the largest TTV signals on each other. The effects of other nonresonant or more distant planets will generally be smaller. In many instances, conservation of energy implies that for a given pair of planets, the change in the orbital period of one planet due to a second planet will be met by a simultaneous change in the orbital period of the second planet but with opposite sign. The relative size of these changes is characterized by the ratio of the masses of the objects. Thus, in a system where multiple planets are transiting, the presence of anti-correlated TTVs between two objects is an indicator—sufficient, though not necessary—that they are in the same system and are interacting. If one couples a stability requirement to this observation, the demonstration that you are observing a planetary system as opposed to an astrophysical system is much simplified. Showing that the masses of two interacting planet candi-

Table 2. Key Properties of Host Stars

| KOI ^a | KIC-ID | Kp | Contam. ^b | T_{eff} (K) | $\log g$ (cgs) | [M/H] | $v \sin i$ km s ⁻¹ | R_{\star} R_{\odot} | M_{\star} M_{\odot} | Sources ^c |
|------------------|---------|--------|----------------------|-------------------------|-------------------|-------------|----------------------------------|----------------------------|----------------------------|----------------------|
| 244 (25) | 4349452 | 10.734 | 0.019 | 6190(80) | 4.23(0.07) | 0.01(0.09) | 11.2(0.4) | 1.36(0.13) | 1.22(0.06) | TRES |
| 250 (26) | 9757613 | 15.473 | 0.077 | 4500(100) | 4.5(0.2) | -0.21(0.08) | 1.9(0.1) | 0.59(0.03) | 0.65(0.03) | Keck (SME) |
| 841 (27) | 5792202 | 15.855 | 0.206 | 5400(60) | 5.4(0.20) | 0.41(0.04) | 0.6(5.0) | 0.59(0.15) | 0.65(0.16) | Keck (SME) |
| 841 (27) | | | | 5260(10) | 4.67(0.23) | 0.23(0.39) | 2.76(1.52) | | | Keck (SPC) |
| 870 (28) | 6949607 | 15.036 | 0.090 | 4590 | 4.29 | 0.34 | - | 0.70 | 0.75 | KIC |

^a The Kepler system number is given in parentheses (e.g., 25 means Kepler-25).

^b Contamination values come from the KIC except KOI-841 which includes the effects of the non-KIC star seen in high resolution imaging.

^c Quoted uncertainties do not include systematic uncertainties due to stellar models. Values with no stated uncertainties are from KIC.

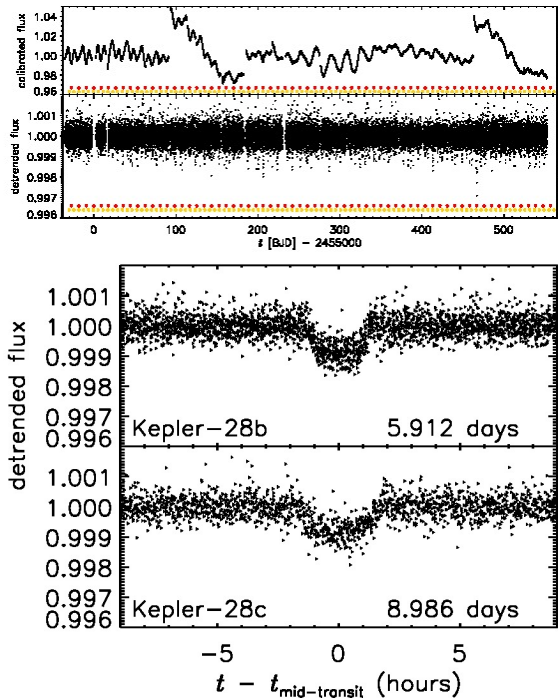


Figure 4. Top) Lightcurve and detrended lightcurve for Kepler-28. The small dots near the bottom of the panels indicate the locations of the planetary transits. Bottom) Phase-folded lightcurves (corrected for TTVs) for the two planets in the system. The periods of these planets are 5.91 days and 8.99 days for b and c respectively.

dates must be planetary gives enough evidence to claim a planet confirmation.

When planets interact, their interactions can be manifest at a variety of natural frequencies (see e.g., Agol et al. (2005); Nesvorný and Morbidelli (2008)) and the orbital period changes at all of those frequencies may show anticorrelation. Nevertheless, near MMR only a few such frequencies will dominate the TTV signal. In the presence of timing noise, the largest signal will be the first to appear with corresponding signals at other frequencies emerging over time. With this in mind, we set out to identify the dominant frequencies in the transit time residuals for all of the objects in multiply-transiting systems.

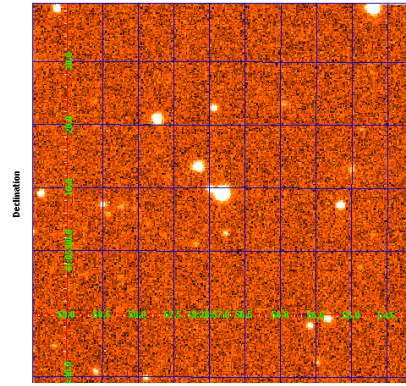


Figure 5. UKIRT J-band image of Kepler-27. A faint star that is not found in the KIC is located 2'' from the target and can be seen just to the left of the target.

After first calculating the residuals from a linear ephemeris (cf. Figure 7), a sinusoidal function is fit to the data, using the Levenberg-Marquardt algorithm, at a variety of periods:

$$f_i = A \sin\left(\frac{2\pi t P_i}{P}\right) + B \cos\left(\frac{2\pi t P_i}{P}\right) + C \quad (1)$$

where A , B , and C are model parameters, P is the mean orbital period of the planet in question, and P_i is the test timescale. The fitted values for A and B are stored along with their measured uncertainties, σ_A and σ_B , derived from the covariance matrix of the three parameter fit—the constant component (typically very small) is discarded, having no information at the specified frequency. This is essentially a Fourier transform of the (non-uniformly sampled) data.

Next, a quantity Ξ

$$\Xi = -\left(\frac{A_1 A_2}{\sigma_{A1} \sigma_{A2}} + \frac{B_1 B_2}{\sigma_{B1} \sigma_{B2}}\right) \quad (2)$$

is calculated for each of the sampled periods¹, where the “1” and “2” subscripts correspond to the two objects. If

¹ For computational reasons there are small differences between the periods (P_i) sampled in the application of equation 1 to each KOI as the algorithm is applied as a pipeline to data on all KOIs at a set of fixed periods relative to each KOI’s orbital period. Consequently, when calculating Ξ , the closest

the TTV signal from each object is anticorrelated at a particular period (or frequency), then Ξ will be a large positive number (cf. Figure 8). Finally, the maximum value that Ξ has for a given candidate pair, Ξ_{\max} , is the statistic we choose to demonstrate that the planets are interacting.

Once Ξ_{\max} has been found for a candidate pair, we use a Monte Carlo test to find the probability that the observed anticorrelation is caused by random fluctuations. To do this, we randomly shuffle the O-C residuals (and their errors), assigning them without replacement to the different transit epochs. We then refit the period and offset, and apply equations (1) and (2) to the shuffled data (cf. Figure 9). The goal here is not to maintain correlations (hence the data are not rotated, Rosary-style, when shuffled) but to identify the probability that data with the observed variance in the O-C residuals can reproduce or exceed the observed Ξ_{\max} .

Should additional correlation (or anticorrelation) in the O-C residuals beyond the frequency corresponding to Ξ_{\max} exist, the most likely explanation is additional terms in the equations describing the dynamical interactions (see, for example, Equations (A7) and (A8) in Agol et al. (2005)) or interactions with other planets in the system. The generation of an anticorrelated TTV signal among two planets from star spots or correlated photometric noise (red noise) is virtually impossible as the dynamical signal occurs over very long timescales, involves two different orbital periods (hence two different noise frequencies are required), and is only sampled on the relatively short timescales of ingress/egress and the transit duration.

We run 10^4 realizations of the Monte Carlo test. Any system where fewer than 10 random realizations have a Ξ_{\max} greater than the nominal data is considered to be interacting with a false alarm probability $\text{FAP} < 10^{-3}$. In the four cases confirmed in this manuscript, there were no examples where random data had a more significant anticorrelation than the original data. An extrapolation of the tail of the distribution of Ξ_{\max} for each system allows for an estimate of the false alarm probability. Such estimates are generally much more significant than what can be obtained with our 10^4 realizations.

Once the systems have been established as interacting via the Monte Carlo simulation, we run dynamical simulations to test the stability of the system. We are particularly interested in the maximum allowed masses of the objects in the system on stability grounds. Starting with nominal masses of $M_p = R_p^{2.06}$, where M_p is in Earth masses and R_p is in Earth radii (Lissauer et al. 2011b), we scale the masses to large values with a common multiplier (see Fabrycky et al. (2011) for additional details). We integrate these systems until they become unstable and then reduce the mass multiplier and re-run the integration—iterating until the systems are long-term

relevant periods are used when comparing objects in the same system. As the periods sampled initially with equation 1 are very dense compared to the dynamical periods of the systems in question, there is negligible effect on the calculation of Ξ except at the shortest few periods, P_i .

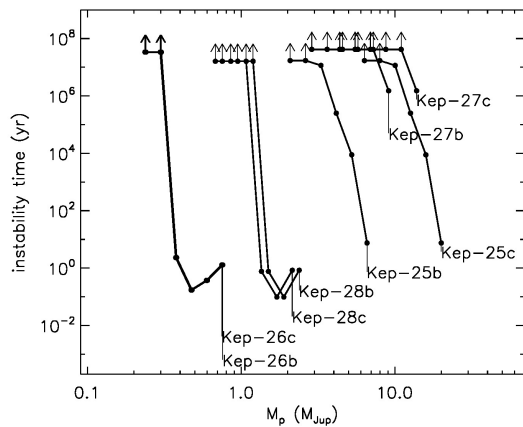


Figure 6. Results of stability tests for the various systems. We adopt as the maximum allowed mass, the smallest mass that was observed to cause the system to be unstable. In all cases, the maximum allowed mass is planetary.

stable (for $\sim 10^7$ years). The smallest mass that is shown to be unstable is chosen as the maximum allowed planet mass in the system. If a system is shown to be both interacting via the observed anticorrelation of the O-C residuals and has a maximum allowed mass that is planetary, we claim that the objects are confirmed planets.

We note that in several cases the mass of the planets is very likely to be much smaller than the stated limits. Other considerations with bearing on mass limits, but which might take additional care in their application, include mass limits based upon the observed TTV amplitudes and constraints on physically plausible densities (in the absence of significant and highly contrived contamination sources, some of the densities of these planets at the stated mass limits exceed 1000 g cm^{-3}). Thus, while there may be some misestimation of the upper mass limits (e.g., caused by using a common multiplier or from uncertainties in the planet radius), there are other quantities that can be brought to bear on systems where stability does not yield sufficiently low masses.

4 RESULTS

4.1 General properties of the systems examined

We first present the results of the stability test for the systems under study, and then show the results of the Monte Carlo test of the anticorrelation statistic Ξ . Figure 6 shows the maximum stable mass estimates for all of the objects in question. In all cases the masses are certainly substellar with only two objects being near the 13 Jupiter mass (M_J) gray area—the rest have maximum masses smaller than $10 M_J$. As argued above, the actual masses of the planets in these systems are likely to be much smaller than the maximum masses allowed from stability considerations. Should one of the systems ultimately prove to be host to a planet/brown dwarf or multiple brown dwarf system, that alone would mark a novel discovery.

The maximum allowed masses from this stability test

are given in Table 3. Also in that table are the values for the planet orbital period and transit epoch, planetary radius, orbital distance, number of observed transits with their median uncertainty, and the median absolute deviation of the O-C residuals. Table 3 has similar information on the unconfirmed planet candidate, KOI-250.03.

4.2 Results: Kepler–25

The two planets in Kepler–25 have a period ratio of 2.039, just outside the 2:1 MMR and the O-C residuals are shown in Figure 7. Even if not actually resonating, one would expect large orbital perturbations in such a system. The observed anticorrelation in the TTV signal is indeed quite large. A plot of Ξ is shown in Figure 8. The Monte Carlo analysis of the transit times shows that the probability of observing an anticorrelation as large as observed is much smaller than the chosen 10^{-3} threshold. The distribution in the Ξ_{\max} statistic for Kepler–25 is shown in Figure 9. Extrapolating the tail of the observed distribution in Ξ_{\max} by eye shows that the actual false alarm probability is likely much smaller than 10^{-32} .

Dynamical stability tests, described above and in Fabrycky et al. (2011), were run on this system in order to establish that the objects must have planetary masses. The maximum allowed mass for the two planets in this system (shown in Figure 6) are $4.16 M_J$ ($3.97 \times 10^{-3} M_{\odot}$) for Kepler–25c and $12.7 M_J$ ($1.21 \times 10^{-2} M_{\odot}$) for Kepler–25b—meaning that a system with these masses and the observed orbital phases is predicted to be unstable on a timescale of roughly 10^7 years.

4.3 Results: Kepler–26

The two planets in Kepler–26 have a period ratio of 1.4045, in this case slightly inside the 3:2 MMR. Here again one would expect large orbital perturbations. The Monte Carlo analysis of this system shows the probability of a spurious anticorrelation to be below our threshold (a rough extrapolation places it near 10^{-5}). The transit times for the two planets in Kepler–26 are shown in Figure 10 and a plot of Ξ is shown in Figure 11. The distribution in the Ξ_{\max} statistic from the Monte Carlo for Kepler–26 is shown in Figure 12. The dynamical tests show that the maximum allowed mass for the two planets in this system are $0.380 M_J$ ($3.63 \times 10^{-4} M_{\odot}$) for Kepler–26b and $0.375 M_J$ ($3.58 \times 10^{-4} M_{\odot}$) for Kepler–26c.

An interesting feature in this system is a smaller peak in Figure 11 near a period of 90 days. Taken alone, this might not warrant much notice. However, a similar peak in Ξ , at the same period is evident for the interaction between the planet Kepler–26b and the planet candidate KOI-250.03 and a trough in Ξ is found at that period in the analysis of Kepler–26c and KOI-250.03—indicating that they have a *correlated* TTV signal at that frequency

² We note that two sets of Gaussian deviates, when analyzed in this same manner, produce a similar structure to what is seen in Figure 8 between periods of 30 and 120 days, and the Monte Carlo generates a histogram similar to the large bump in Figure 9.

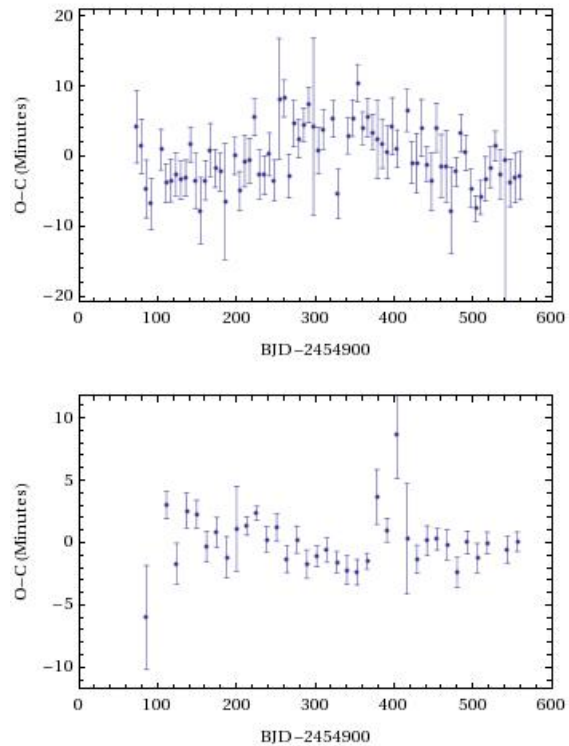


Figure 7. Observed minus calculated transit times for Kepler–25. Planets b and c are the top and bottom panels respectively.

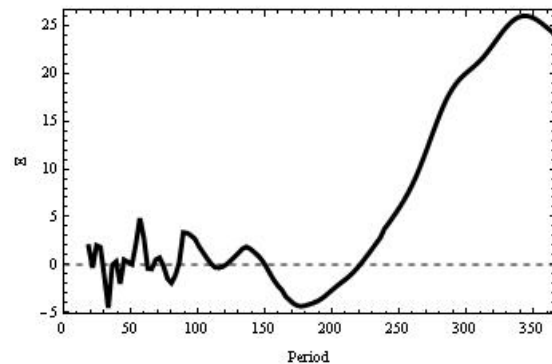


Figure 8. Plot of Ξ vs. period for Kepler–25.

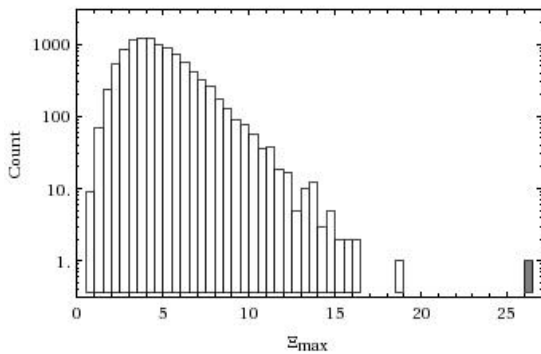
instead of an anti-correlated one (see Figures 13 and 14). This is a hint that these three objects may be mutually interacting such that when the middle planet’s period increases, the periods of the two outer objects both decrease—and vice versa. The current analysis is not sufficient to demonstrate that KOI-250.03 is a real planet, but with additional data or with a more sophisticated, three-body analysis such a goal may well be achieved.

4.4 Results: Kepler–27

The period ratio of the two planets in Kepler–27 is 2.043, similar to Kepler–25—slightly outside the 2:1 MMR. The

Table 3. Key Properties of Planets and Planet Candidates

| KOI | Planet | Epoch ^a (d) | P (d) | T_{Dur}^b (hr) | $R_p^{b,c}$ R_{\oplus} | $a^{b,c}$ (AU) | nTT ^d | σ_{TT} (d) | MAD ^e (d) | $M_{p,\text{max}}^f$ M_{Jup} |
|--------|------------|---------------------------|------------|----------------------------|-----------------------------|-------------------|------------------|----------------------|-------------------------|--|
| 244.01 | Kepler-25c | 86.0871 | 12.7204 | 2.89 | 4.5 | 0.110 | 36 | 0.0008 | 0.0009 | 4.16 |
| 244.02 | Kepler-25b | 73.5126 | 6.2385 | 3.58 | 2.6 | 0.068 | 74 | 0.0021 | 0.0023 | 12.7 |
| 250.01 | Kepler-26b | 78.8321 | 12.2829 | 2.82 | 3.6 | 0.085 | 35 | 0.0030 | 0.0044 | 0.380 |
| 250.02 | Kepler-26c | 82.8854 | 17.2513 | 2.12 | 3.6 | 0.107 | 24 | 0.0040 | 0.0045 | 0.375 |
| 250.03 | ... | 69.2705 | 3.5438 | 1.98 | 1.3 | 0.037 | 132 | 0.0231 | 0.0129 | ... |
| 841.01 | Kepler-27b | 91.6726 | 15.3348 | 3.47 | 4.0 | 0.118 | 30 | 0.0048 | 0.0069 | 9.11 |
| 841.02 | Kepler-27c | 86.4274 | 31.3309 | 4.75 | 4.9 | 0.191 | 15 | 0.0032 | 0.0029 | 13.8 |
| 870.01 | Kepler-28b | 75.6227 | 5.9123 | 2.77 | 3.6 | 0.062 | 76 | 0.0083 | 0.0057 | 1.51 |
| 870.02 | Kepler-28c | 81.7277 | 8.9858 | 4.39 | 3.4 | 0.081 | 52 | 0.0081 | 0.0102 | 1.36 |

^a BJD-2454900^b From Borucki *et al.* (2011)^c Updated to reflect stellar properties from Table 2^d Number of transit times measured in Q0-6^e Median absolute deviation from linear ephemeris measured during Q0-6^f Based on assumption of dynamical stability and stellar mass from Table 2**Figure 9.** Results of the Monte Carlo test for Kepler-25. The observed Ξ_{max} (dark gray) is significantly larger than any of the tested samples.

Monte Carlo analysis of this system shows the probability of a spurious anticorrelation to be below our threshold (again likely to be much smaller). The transit times for the two planets in Kepler-27 are shown in Figure 15 and a plot of Ξ is shown in Figure 16. The distribution in the Ξ_{max} statistic is shown in Figure 17. The dynamical tests give maximum masses for the two planets in this system of $9.11 M_J$ ($8.69 \times 10^{-3} M_{\odot}$) for Kepler-27b and $13.8 M_J$ ($1.32 \times 10^{-2} M_{\odot}$) for Kepler-27c.

4.5 Results: Kepler-28

In Kepler-28 the ratio of orbital periods is 1.52, outside the 3:2 MMR. The Monte Carlo analysis of this system shows the probability of a spurious anticorrelation to be extremely tiny (probably of order 10^{-7}). The transit times for the two planets in Kepler-28 are shown in Figure 18 and a plot of Ξ is shown in Figure 19. The distribution in the Ξ_{max} statistic for Kepler-28 is shown in Figure 20. The dynamical tests give maximum masses for the two

Table 4. Results from Monte Carlo simulations

| KOI | KOI | False Alarm Probability |
|------------------------|---------|-------------------------|
| 244.01 | 244.02 | $< 10^{-3}$ |
| 250.01 | 250.02 | $< 10^{-3}$ |
| 841.01 | 841.02 | $< 10^{-3}$ |
| 870.01 | 870.02 | $< 10^{-3}$ |
| Fabrycky <i>et al.</i> | | |
| 738.01 | 738.02 | 0.0007 |
| 806.01 | 806.03 | $< 10^{-3}$ |
| 935.01 | 935.02 | 0.4021 |
| 952.01 | 952.02 | $< 10^{-3}$ |
| Ford <i>et al.</i> | | |
| 168.01 | 168.02 | $< 10^{-3}$ |
| 1102.01 | 1102.02 | $< 10^{-3}$ |

planets in this system of $1.51 M_J$ ($1.44 \times 10^{-3} M_{\odot}$) for Kepler-28b and $1.36 M_J$ ($1.30 \times 10^{-3} M_{\odot}$) for Kepler-28c.

4.6 Other Kepler systems

In addition to the systems presented here, similar studies were conducted for the systems analyzed in Fabrycky *et al.* (2011); Ford *et al.* (2011a). Table 4 shows these results along with the results of the two other studies for the same planet pairs. There is broad agreement about the planetary nature of the systems investigated. Nevertheless, some differences in the results of the three methods is an indication of their complementarity—certain systems, and the data we have on them, lend themselves better to certain types of analysis.

5 DISCUSSION

The *Kepler* mission has produced a significant number of new transiting exoplanet candidates, a large portion

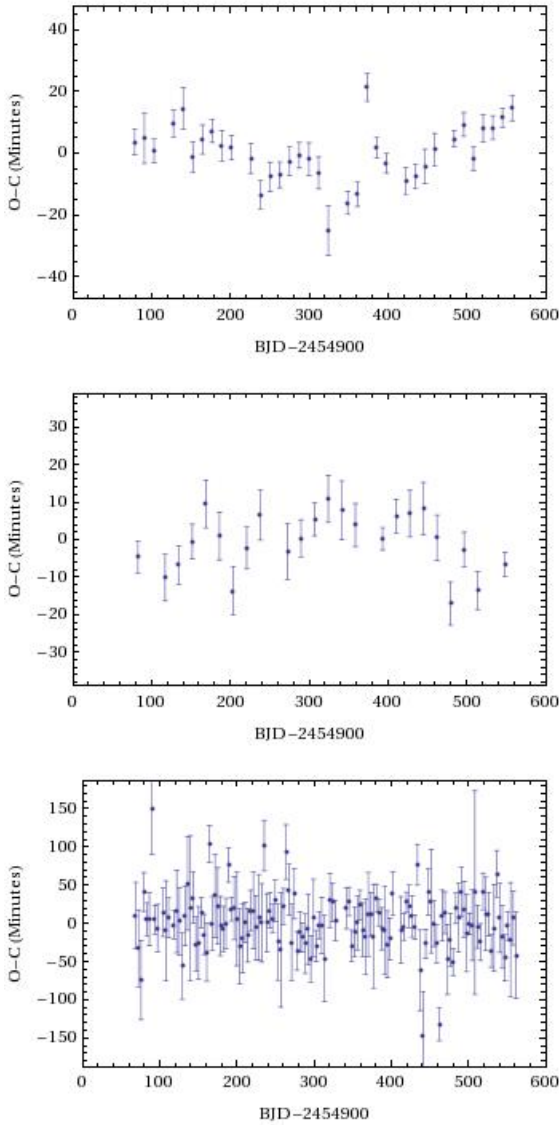


Figure 10. Observed minus calculated transit times for the three objects in Kepler-26, the panels are for planets b (top), c (middle), and KOI-250.03 (bottom).

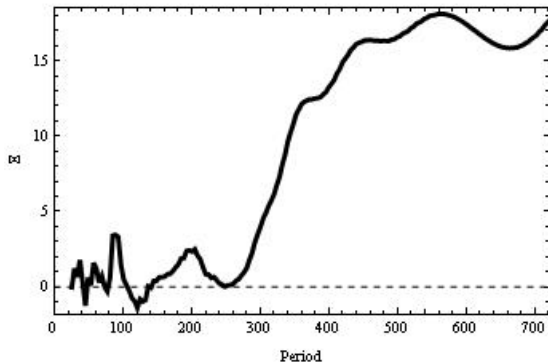


Figure 11. Plot of $\bar{\Xi}$ vs. period for Kepler-26.

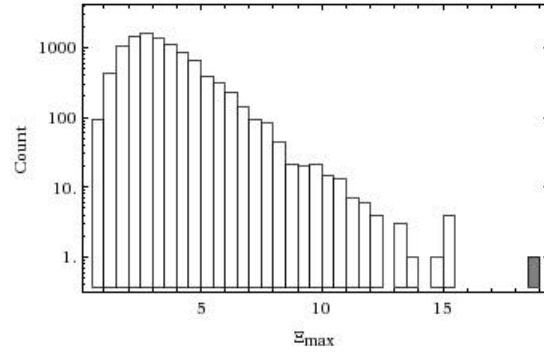


Figure 12. Results of the Monte Carlo test for Kepler-26.

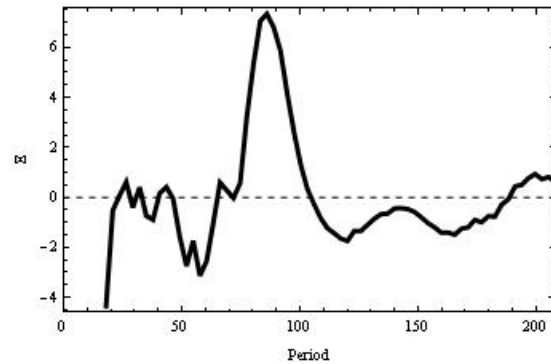


Figure 13. Correlation graph for Kepler-26b and KOI-250.03. The peak near 90 days is marginally significant and may indicate anticorrelated TTVs between these two objects.

of which are found in systems with multiple transiting objects. One challenge presented by such a rich yield is confirming or validating the planetary nature of these candidates—especially since many of the *Kepler* systems are very dim ($Kp > 15$) and are very small ($R < 4R_{\oplus}$), and are therefore not amenable to the traditional spectroscopic methods that have been the workhorse of exoplanet discovery.

In this paper (and its companion papers) we present a method that can fill this need. We claim that, in multi-transiting systems, the demonstration that two objects are in the same system and that their masses must be planetary are a sufficient criteria to confirm the objects as planetary. The first criterion effectively eliminates background astrophysical false positive scenarios while the second shows that the objects are of planetary mass. We have shown that anti-correlated transit timing variations of sufficient significance can satisfy the first criterion. We developed a Fourier-based analysis and defined a statistic Ξ_{\max} that can be used to calculate this significance of an anti-correlation observed for a pair of TTV signals.

We use dynamical stability as our primary means to constrain the mass of the transiting objects. These tests demonstrate that the object's masses in four *Kepler* systems satisfy our second criterion given above. Another means to constrain planetary masses comes from the TTV signals themselves. If the masses of the transit-

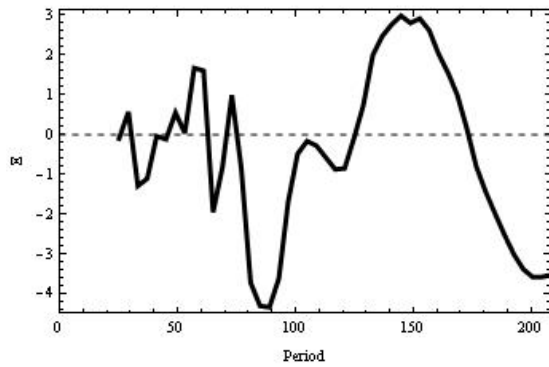


Figure 14. Plot of Ξ vs. period for Kepler-26c and KOI-250.03. The dip near a period of 90 days indicates possible correlated (instead of anticorrelated) TTVs. Such a situation would arise if two planets are being simultaneously perturbed by a third object. The two objects whose correlation is shown here lie on either side of Kepler-26b, which may be the cause of this apparent correlation.

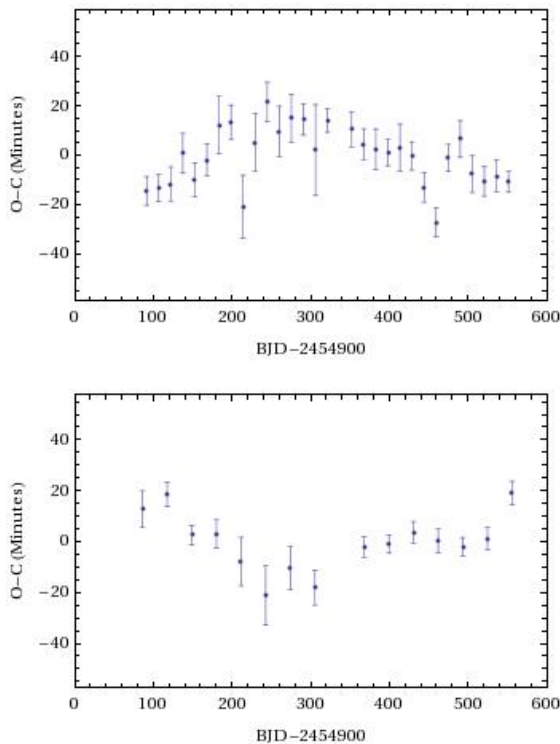


Figure 15. Observed minus calculated transit times for Kepler-27, the top and bottom panels are for planets b and c respectively.

ing objects are too large, then the associated TTV signal will also be too large to be consistent with the observed variation.

The application of this method to *Kepler* data confirms the planetary systems Kepler-25, Kepler-26, Kepler-27, and Kepler-28. This method is also applied to the systems announced in Fabrycky et al. (2011) and Ford et al. (2011a) with results broadly consistent with

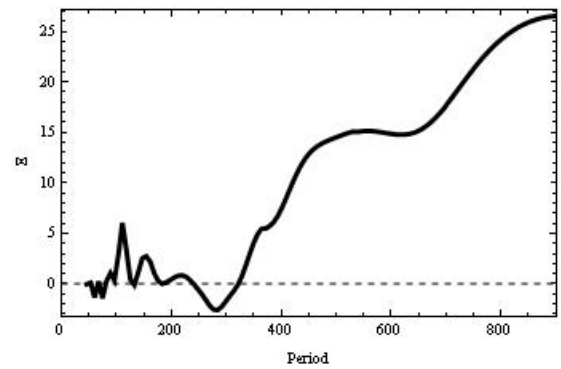


Figure 16. Plot of Ξ vs. period for Kepler-27.

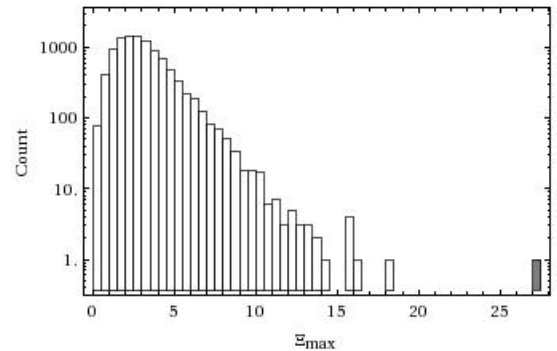


Figure 17. Results of the Monte Carlo test for Kepler-27.

the conclusions found in those studies. The fact that there are some differences among the three methods presented in this set of papers shows the importance of complementary analysis—particularly now at the early stages of the application of TTV methods to large quantities of data.

As this, and other methods continue to be refined, there is a significant opportunity for both the discovery of new planetary systems, for the elimination of astrophysical false positive explanations for observed transit signatures, and for the identification of systems that merit additional, more detailed characterization. The benefits to exoplanetary science of transiting exoplanets, and particularly of multi-transiting exoplanetary systems, are well known (Charbonneau et al. 2007; Ragozzine and Holman 2010). A fast and reliable method to identify exoplanet systems from large quantities of photometric data (specifically *Kepler* data) is an essential element for rapid advancement in the field. Methods such as that presented here can inform and economize a wide variety of supplemental (generally ground-based) observational efforts.

ACKNOWLEDGEMENTS

Funding for the *Kepler* mission is provided by NASA's Science Mission Directorate. We thank the entire *Kepler* team for the many years of work that is proving so successful. J.H.S acknowledges support by NASA under grant NNX08AR04G issued through the *Kepler* Par-

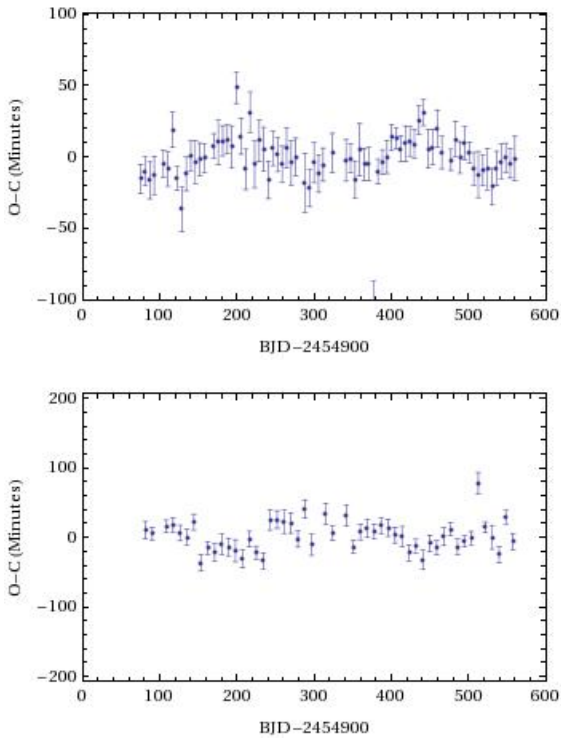


Figure 18. Observed minus calculated transit times for Kepler-28, where the top and bottom panels are of planets b and c respectively.

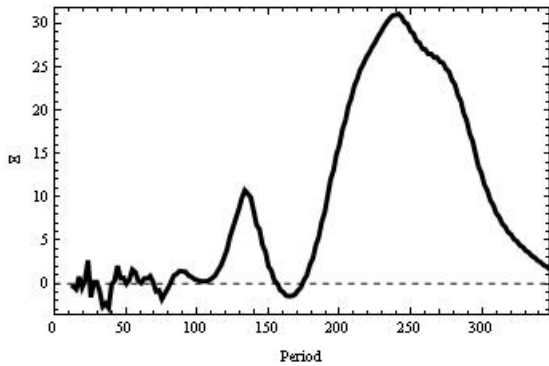


Figure 19. Plot of Ξ vs. period for Kepler-28.

participating Scientist Program. D. C. F. and J. A. C. acknowledge support for this work was provided by NASA through Hubble Fellowship grants #HF-51272.01-A and #HF-51267.01-A awarded by the Space Telescope Science Institute, which is operated by the Association of Universities for Research in Astronomy, Inc., for NASA, under contract NAS 5-26555. This work is based in part on observations made with the Spitzer Space Telescope, which is operated by the Jet Propulsion Laboratory, California Institute of Technology under a contract with NASA. Support for this work was provided by NASA through an award issued by JPL/Caltech. We would like to thank the Spitzer staff at IPAC and in particular

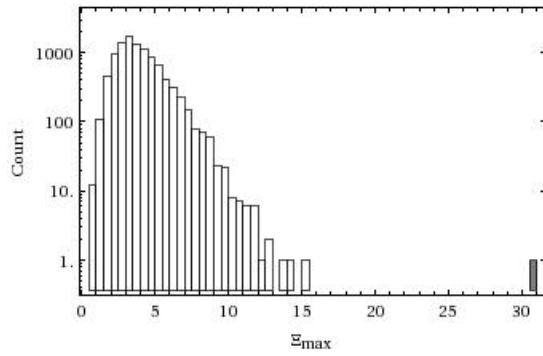


Figure 20. Results of the Monte Carlo test for Kepler-28.

Nancy Silbermann for scheduling the Spitzer observations of this program.

REFERENCES

- E. Agol, J. Steffen, R. Sari, and W. Clarkson. *MNRAS*, 359:567–579, May 2005.
- W. J. Borucki et al. *Science*, 327:977–, February 2010.
- W. J. Borucki et al. *ApJ*, 736:19–+, July 2011.
- T. M. Brown, D. W. Latham, M. E. Everett, and G. A. Esquerdo. *ArXiv e-prints:1102.0342*, 2011.
- L. A. Buchhave et al. *in preparation*, 2011.
- D. Charbonneau, T. M. Brown, A. Burrows, and G. Laughlin. *Protostars and Planets V*, pages 701–716, 2007.
- A. Claret. *A&A*, 363:1081–1190, November 2000.
- J.-M. Désert, A. Lecavelier des Etangs, G. Hébrard, D. K. Sing, D. Ehrenreich, R. Ferlet, and A. Vidal-Madjar. *ApJ*, 699:478–485, July 2009.
- J.-M. Désert et al. *A&A*, 526:A12+, February 2011.
- A. Duquennoy and M. Mayor. *A&A*, 248:485–524, August 1991.
- D. C. Fabrycky, E. B. Ford, J.-H. Steffen, et al. *ApJ Submitted*, 2011.
- G. G. Fazio et al. *ApJS*, 154:10–17, September 2004.
- D. A. Fischer and J. Valenti. *ApJ*, 622:1102–1117, April 2005.
- E. B. Ford, D. C. Fabrycky, J.-H. Steffen, et al. *ApJ Submitted*, 2011a.
- E. B. Ford et al. *ApJS*, 197:2–+, November 2011b.
- F. Fressin et al. *ApJS*, 197:5, November 2011.
- M. J. Holman and N. W. Murray. *Science*, 307:1288–1291, February 2005.
- M. J. Holman et al. *Science*, 330:51–, October 2010.
- J. M. Jenkins et al. *ApJL*, 713:L87–L91, April 2010.
- D. G. Koch et al. *ApJL*, 713:L79–L86, April 2010.
- D. W. Latham et al. *ApJL*, 732:L24+, May 2011.
- J. J. Lissauer et al. *Nature*, 470:53, January 2011a.
- J. J. Lissauer et al. *ApJS*, 197:8, November 2011b.
- J. J. Lissauer et al. *ApJ Submitted*, 2011c.
- K. Mandel and E. Agol. *ApJL*, 580:L171–L175, December 2002.
- P. Morel. *A&AS*, 124:597–614, September 1997.
- D. Nesvorný and A. Morbidelli. *ApJ*, 688:636–646, November 2008.

- W. H. Press, S. A. Teukolsky, W. T. Vetterling, and B. P. Flannery. *Numerical recipes in C. The art of scientific computing*. 1992.
- D. Raghavan et al. *ApJS*, 190:1–42, September 2010.
- D. Ragozzine and M. J. Holman. *ArXiv e-prints:1006.3727*, June 2010.
- J. H. Steffen et al. *ApJ*, 725:1226–1241, December 2010.
- G. Torres et al. *ApJ*, 727:24, January 2011.
- J. A. Valenti and N. Piskunov. *A&AS*, 118:595–603, September 1996.
- M. W. Werner et al. *ApJS*, 154:1–9, September 2004.
- W. J. Wu et al. *Proc. SPIE, in press*, 7740, 2010.

APPENDIX A: ADDITIONAL DATA

Given the anticorrelated TTV signals in these systems and the maximum allowed masses of the objects, we claim that the objects causing the observed transit features are planets. Additional follow-up data from a variety of observatories was also gathered on these systems. Here we show these data and their corresponding analyses for the different planetary systems.

A1 High resolution imaging

High resolution images exist for Kepler–25 and for Kepler–26 in the form of Adaptive Optics and Speckle observations. These images can be used to identify the presence of stars that would either cause contamination or be the source of a false positive system. For Kepler–25, Figure A1 shows a Ks-band image that is 20" on a side (north is up and east is to the left) taken at the Palomar Observatory.

Figure A2 is a speckle image taken at 692nm with the WIYN telescope. This image (and a separate image that is not shown) demonstrates that Kepler–25 is an isolated star within a radius of 0.05" for companions that are 5.5 magnitudes fainter in R and 4.5 magnitudes fainter in V. Figure A3 is a speckle image taken at the same wavelength for Kepler–26. This image shows that Kepler–26 is a single star within a similar radius for companions that are fainter by 3.2 magnitudes in R and 2.8 magnitudes in V.

A2 Spitzer observations

Kepler–25c, Kepler–25b, and Kepler–26c were observed during several transits with *Warm-Spitzer*/IRAC (Werner et al. 2004; Fazio et al. 2004) at 4.5 μm (program ID 60028). Each visit lasted 7 h 06 min, 8 h 30 min, and 5 h 45 min for Kepler–25c, Kepler–25b, and Kepler–26c respectively. The data were gathered in full-frame mode (256 \times 256 pixels) with an exposure time of 12 s per image, yielding 1696, 2054 and 2450 images, respectively. From the images we produced a photometric time series using the method described in Désert et al. (2009) which consists of finding the centroid position of the stellar point spread function (PSF) and performing aperture photometry using a circular aperture on individual Basic

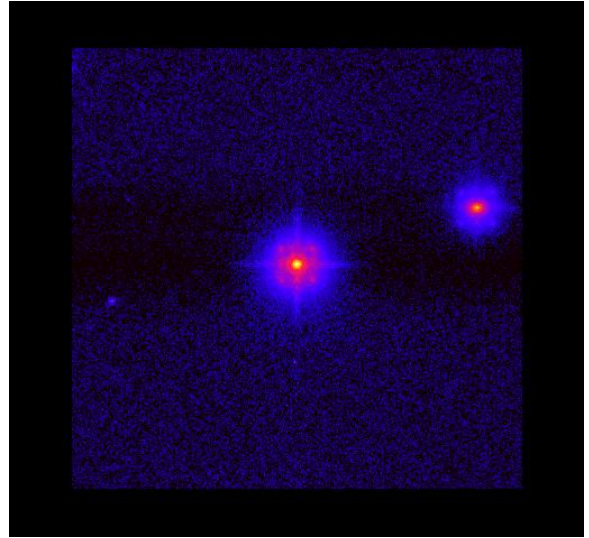


Figure A1. Ks-band adaptive optics image of Kepler–25. The image is 20" on a side.

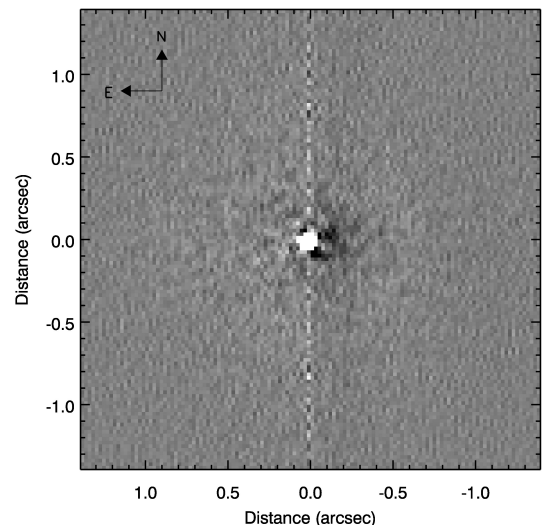


Figure A2. Speckle image of Kepler–25 taken with a filter centered at a wavelength of 692nm.

Calibrated Data (BCD) images delivered by the *Spitzer* archive.

These files are corrected for dark current, flat-fielding, detector non-linearity and converted into flux units. We converted the pixel intensities to electrons using the information given in the detector gain and exposure time provided in the FITS headers; this facilitates the evaluation of the photometric errors. We adopt photometric apertures which provide the smallest errors; the optimal apertures are found to be at 3.0 pixels. We find that the transit depths and errors vary only weakly with the aperture radius for all of the light-curves. Outliers in flux and positions greater than 5σ were rejected using a sliding median filter and the first half-hour of observa-

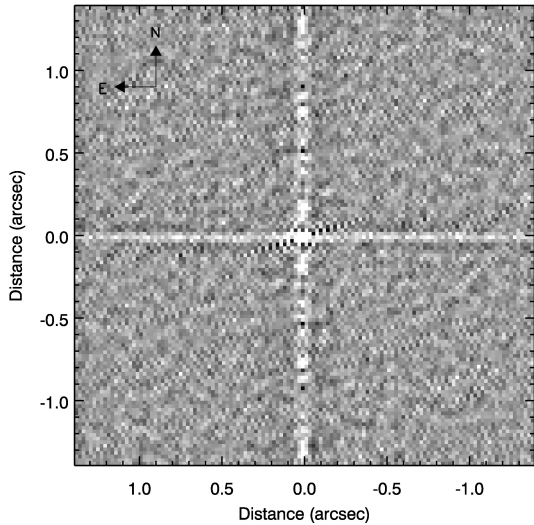


Figure A3. Speckle image of Kepler-26 taken with a filter centered at a wavelength of 692nm.

tions, which are affected by a significant telescope jitter before stabilization, are also rejected.

We estimate the background by fitting a Gaussian to the central region of the histogram of counts from the full array. Telescope pointing drift results in fluctuations of the stellar centroid position, which, in combination with intra-pixel sensitivity variations, produces systematic noise in the raw light curves. The final photometric measurements used in the analysis are presented in Table A1 and the raw time series are presented in the top panels of Figures A4, A5, and A7.

We correct the light curves for instrumental effects and measure the transit depths and their uncertainties as described in Désert et al. (2011). The transit light curves model used is the IDL transit routine OCCULTSMALL from Mandel and Agol (2002). Only the ratio R_p/R_* is allowed to vary while the other model parameters are set to their value derived from the *Kepler* lightcurve and the mid-transit times are fixed at the measured central transit time. We simultaneously fit the instrumental functions with the transit for each individual visit, and report the values in Table A1. The errors on each photometric point were assumed to be identical, and were set to the *rms* of the residuals of the initial best-fit obtained.

A3 Study of possible blend scenarios

One issue that can arise with systems like those we present is that, while the transiting objects are known to be planets, there is a small probability that they orbit a background or physically associated star rather than the *Kepler* target star. The centroid offsets alone can eliminate a significant amount of blend scenarios. However, other types of analysis can boost confidence that the target star is indeed the planetary host star.

A more detailed analysis with BLENDER folds in data from a number of sources and is sufficiently powerful to validate the planetary nature of an object on its own by

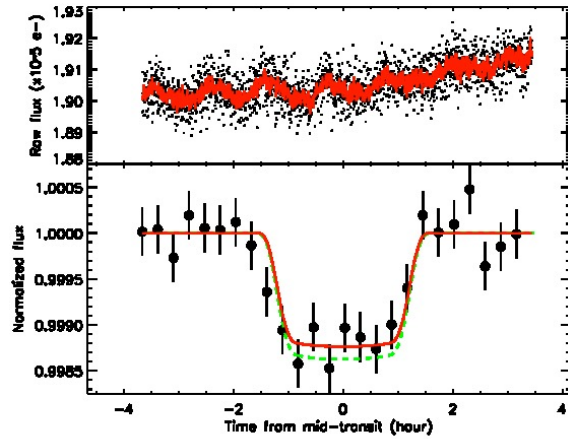


Figure A4. Observation of a transit of Kepler-25c with *Spitzer*. The raw and unbinned lightcurve is shown in the top panel. The red solid lines correspond to the best fit model, including the planetary transit and the time and position instrumental decorrelations. The bottom panels show the corrected, normalized, and coadded lightcurve that is binned by 17 minutes. The green curve shows the expected transit model from the *Kepler* spacecraft which agrees, within the uncertainty, with *Spitzer*.

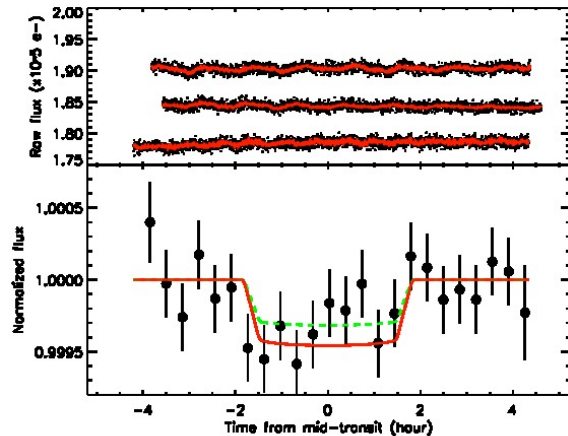


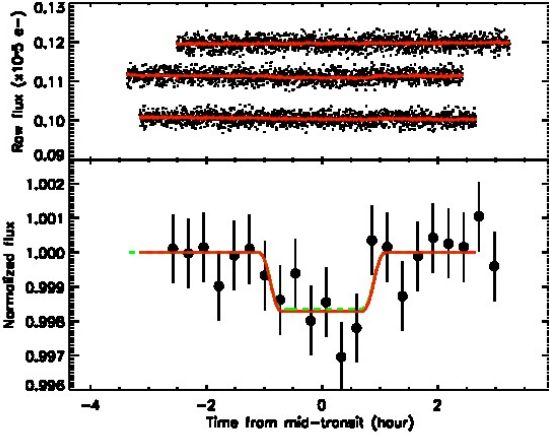
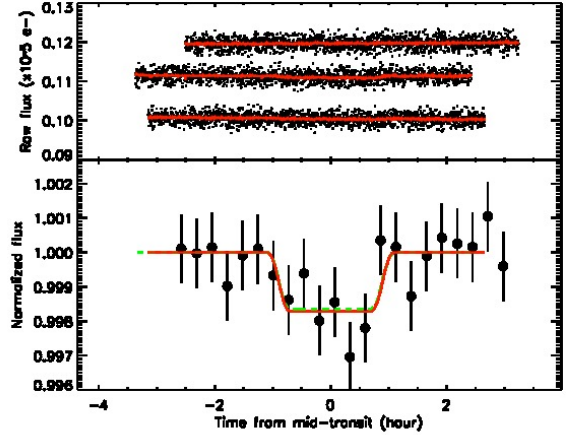
Figure A5. Observation of the transit of Kepler-25b with *Spitzer*. The raw and unbinned lightcurves are shown in the top panel. The formatting is the same as in Figure A4.

the elimination of possible scenarios (Torres et al. 2011). However, such a study consumes a significant amount of human and computer resources. We conducted a small-scale analysis for blend scenarios for the systems presented here, though given the expense of even these studies we anticipate that future applications of the planet confirmation method described herein will not include a similar blend analysis. In this less exhaustive blend study, we quantify the likelihood that the planets we see transit an unresolved star in the photometric aperture whether by the chance alignment of a background star, or a physical companion to the target.

The TTV signal provides a strong constraint on the maximum mass ratio planets could have with the star they orbit. This maximum mass ratio translates to a max-

Table A1. *Warm-Spitzer* observations of KOI-244.01, KOI-244.02, and KOI-250.02 at 4.5 μm .

| KOI | AOR | Obs. Date (UT) | BJD-2454900 | Select. points | R_p/R_* | Transit depth (ppm) |
|--------|------------|----------------|-------------|----------------|---------------------------|----------------------|
| 244.01 | r394373124 | 2010-09-17 | 556.7411 | 1920 | $0.036^{+0.002}_{-0.002}$ | 1296^{+148}_{-140} |
| 244.02 | r39438848 | 2010-07-26 | 503.9737 | 2305 | $0.020^{+0.005}_{-0.005}$ | 361^{+101}_{-88} |
| 244.02 | r39439104 | 2010-07-20 | 497.7325 | 2314 | $0.013^{+0.005}_{-0.005}$ | |
| 244.02 | r41165568 | 2010-12-23 | 653.7085 | 2305 | $0.021^{+0.003}_{-0.003}$ | |
| 250.02 | r41197056 | 2010-10-31 | 600.4204 | 1547 | $0.035^{+0.006}_{-0.006}$ | 1444^{+362}_{-321} |
| 250.02 | r41196800 | 2010-11-18 | 617.6693 | 1536 | $0.051^{+0.009}_{-0.011}$ | |
| 250.02 | r41196544 | 2010-12-21 | 652.1735 | 1542 | $0.034^{+0.008}_{-0.009}$ | |

**Figure A6.** Observations of the transit of Kepler-26c with *Spitzer*. The formatting is the same as in Figure A4.**Figure A7.** Observations of the transit of Kepler-26c with *Spitzer*. The formatting is the same as in Figure A4.

imum radius allowed as a function of the spectral type of the blend. We use the upper envelope of the known exoplanets mass-radius diagram to estimate the maximum radius—from which we get the maximum dilution factor (or magnitude difference) per spectral type that would match the observed transit depth. When the maximum allowed magnitude difference is small, it excludes a large fraction of background blends as well as the reddest stellar companions.

Stellar companions can also be constrained by the color of the target. We verify that simple stellar models using T_{eff} and the Solar isochrone are consistent with the $r - K$ color (using r from the KIC and 2MASS K). This excludes blends that are significantly redder than the target (having a $\Delta(r - K) > 0.1$). For Kepler-25 and Kepler-26, the *Spitzer* observations are consistent with a planetary transit and show no evidence for a false positive scenario. We exclude the scenario of a larger planet transiting a significantly redder star for both physical companions and for background stars for systems where there would be a 3σ discrepancy between the *Spitzer* and *Kepler* observations.

We compute the frequency of blends using a target-specific (magnitude and position) Besançon model of the galaxy for background stars with a cut on the maximum magnitude difference and spectral type. For the frequency of physical companions, we use the rates given in Ragh-

van et al. (2010) and draw, for our samples, the mass ratio between the companion and primary from the distributions given in Duquennoy and Mayor (1991).

For Kepler-25 and Kepler-26, we estimate that it is $\gtrsim 300$ times more likely that the planets transit the target star than they transit an unresolved companion or background star. For Kepler-27 and Kepler-28, it is more difficult to exclude the scenario where the planets transit an unresolved stellar companion. The centroid shift does not help with this issue, leaving the maximum mass ratio and color as the remaining constraints. Table A2 shows the results of our analysis for blend scenarios. Even for cases where companion stars remain a possibility, this does not affect the planetary nature of these systems—nor does it affect the system where the planets are located (only the star within that system). Indeed, if these planets happen to orbit a smaller star the maximum allowed mass from our stability study would, in turn, be smaller as the dynamics cares about the ratio of the masses and not the actual masses; and the anticorrelated TTV signal already demonstrates that these are not planets orbiting different stars.

This paper has been typeset from a \LaTeX file prepared by the author.

Table A2. Probability of selected blend scenarios.

| KOI | max ΔK_p | max Radius of Confusion (") | Background Blends | Physical Companion |
|-----|------------------|-----------------------------|-------------------|--------------------|
| 244 | 4.5 | 0.069 | 0.0000019 | 0.00 ^a |
| 250 | 3.0 | 0.10 | 0.0000252 | 0.00 ^a |
| 841 | 4.3 | 0.24 | 0.000559 | 0.114 |
| 870 | 5.5 | 0.78 | 0.00714 | 0.340 |

^a Strong constraints on physical companions comes from the *Spitzer* data on these targets.