

## Catalogue of Cassidinae (Coleoptera: Chrysomelidae) from the New Leaf Beetles Collection from “Grigore Antipa” National Museum of Natural History (Bucharest) (Part II)

Sanda MAICAN<sup>1, \*</sup>, Rodica SERAFIM<sup>2</sup>

<sup>1</sup>Institute of Biology Bucharest of Romanian Academy, 296 Splaiul Independenței, 060031 Bucharest, P.O. Box 56–53, Romania.

<sup>2</sup>“Grigore Antipa” National Museum of Natural History, Kiseleff 1, 011341 Bucharest, Romania.

\*corresponding author, e-mail: sanda.maican@ibiol.ro

Received: June 30, 2017; Accepted: November 7, 2017; Available online: December 28, 2017; Printed: December 31, 2017

**Abstract.** The paper reports data on the species of Cassidinae preserved in the new Chrysomelidae Collection of “Grigore Antipa” National Museum of Natural History (Bucharest). A total of 852 specimens, representing four genera and 31 species are listed. Out of them, 11 species are recently entered in this collection. New distributional data for some rare species of *Cassida* in Romanian fauna are given.

**Key words:** Chrysomelidae, Cassidinae, collections, “Grigore Antipa” National Museum of Natural History, Bucharest.

### INTRODUCTION

The subfamily Cassidinae includes about 16% of leaf beetle species diversity and forms the second largest clade of Chrysomelidae family, after Galerucinae (Chabo, 2007).

In old sense, Cassidinae (commonly named tortoise beetles) and Hispinae (leaf-mining beetles) were considered distinct subfamilies (Seeno & Wilcox, 1982). Cassidinae s.str. includes 2,906 species from 154 genera placed in 19 tribes (Seeno & Wilcox, 1982) or 12 tribes (Borowiec, 1999), and Hispinae s.str. comprises 2,980 species grouped in 170 genera and 24 tribes (Seeno & Wilcox, 1982; Staines, 2002; Chabo, 2007).

The combination of Cassidinae with Hispinae is relatively recent (Staines, 2002). Thus, the subfamily Cassidinae *sensu lato* includes 6,319 described species (3,371 hispines and 2,948 cassidines) distributed worldwide. According to Borowiec & Świętojańska (2014), Cassidines are classified in 341 genera and 36 tribes.

A total of 32 species of Cassidinae from four genera (*Cassida* Linnaeus, *Hypocassida* Weise, *Pilemostoma* Desbrochers des Loges and *Hispa* Linnaeus) were reported in Romanian fauna (Maican, 2005; Sekerka, 2007).

In “Grigore Antipa” National Museum of Natural History, the Cassidinae material is included in the Collection of Palaearctic Coleoptera (data have been published partially) and in the recently formed Collection of Chrysomelidae. The study and arrangement of the material in the new leaf-beetle collection started in 2016. Thus, in the first part of the catalogue of this collection, data on 33 Palaearctic species of subfamilies Donaciinae (tribes Donaciini, Haemoniini and Plateumarini) and Criocerinae were published (Maican & Serafim, 2016).

### MATERIAL AND METHODS

The new Cassidinae collection, which we refer in this paper, comprises:

- material that was not included in the Collection of Palaearctic Coleoptera, containing specimens from collections of Dénes Kenderessy (1846–1881), Edmund Reitter (1845–1920), Arnold Lucien Montandon (1852–1922), Friedrich Deubel (1845–1933), Richard Canisius (1872–1934), and Emil Várady. The Collection of Palaearctic Coleoptera was created around 1960, by gathering all the collections entered into the scientific heritage of “Grigore Antipa” Museum, at the end of the 19<sup>th</sup> century and the beginning of the 20<sup>th</sup> century;
- material collected from Romania (1951–2017) by the team of specialists from “Grigore Antipa” Museum and their collaborators during several research projects on the Romanian fauna;
- material from Dr. Nicolae Săvulescu (1920–1992) collection, which was included in the Museum patrimony after his death;
- specimens donated by Franz Salay (1861–1946), Igor Ceianu (1925–2000), Vladimir Brădescu (1915–2004), Mihai Șerban Procheș, Adrian Ruicănescu, Viorel Ungureanu, Sanda Maican;
- material collected during the scientific expeditions organized by “Grigore Antipa” Museum in the areas of the Mediterranean Basin: “Punia” 2006 (Tunisia) and “Euphrates” 2008 (Turkey).

The paper presents the results of the study of the cassidines material (tribes Cassidini and Hispini) preserved in the new Chrysomelidae collection of the “Grigore Antipa” National Museum of Natural History, Bucharest.

Parts of the material of Chrysomelidae were published by Negru & Roșca (1967), Negru (1968), Hoinic (1994), Maican & Serafim (2001, 2004, 2009, 2012), Maican (2006, 2007 a, b), Serafim & Maican (2004, 2008, 2011), Ungureanu et al. (2008).

The species identification was made by Atena Roșca<sup>1</sup>, Igor Ceianu<sup>2</sup>, Cristina Hoinic<sup>3</sup>, Sanda Maican, Rodica Serafim, Ștefan Negru<sup>4</sup> and Mircea Alexandru Ienișteea<sup>5</sup>. For identification, the following papers were consulted: Warchałowski (2003, 2010), Sekerka (2010), Borowiec (2013), Borowiec & Świętojańska (2002–2017).

Nomenclature and systematical order follows the *Catalogue of Palaearctic Coleoptera* (Borowiec & Sekerka, 2010).

The stereomicroscope Stemi 2000-C was used to identify the specimens, and habitus photos were taken using the Canon EOS 5D Mark IV digital camera.

For each species, the collecting site, date, the number of the specimens, the collectors' name and the host plants are mentioned.

Abbreviations:

coll. – collection; f.c. – Forest chalet; Mt. (Mts) – Mountain/Mountains; m a.s.l. - meters above sea level; spec. (s) - specimen/specimens.

Names of the collectors:

<sup>1</sup>Atena Roșca (1930–1976), worked at the Museum between 1954 and 1976.

<sup>2</sup>Igor Ceianu (1925–2000), a Romanian specialist of plant protection.

<sup>3</sup>Cristina Hoinic (1967–1997), worked at the museum between 1992 and 1997.

<sup>4</sup>Ștefan Negru (1923–1970), worked at the Museum between 1963 and 1970.

<sup>5</sup>Mircea Alexandru Ienișteea (1910–1994), a renowned entomologist and professor, collaborator of the Museum.

A.C. – Alin Constantinescu; A.L. – Alexandra Levardă (Popa); Ad.R. – Adrian Ruicănescu; A.M.K. – Ana Maria Krupal; A.P. – Angela Petrescu; A.Pe. – Angela Petrișor; A.G. – Aristița Goagă; A.L.M. – Arnold Lucien Montandon; A.R. – Atena Roșca; A.P.G. – Aurelian Popescu - Gorj; A.S. – Aurora Stănescu; A.Z. - A. Zoppa; C.P. – Corneliu Părvu; C.B. – Cristina Ban (Calefariu); C.C. – Corina Clisu; C.H. – Cristina Hoinic; D.D. – Dan Dumitrescu; D.K. – Dénes Kenderessy; D.M. – Dumitru Murariu; D.S. – Dragoș Scăunașu; Ed.R. – Edmund Reitter; E.I. – Elena Iorgu; E.R. – Elena Rusu; E.V. – Emil Váradi; F.S. – Franz Salay; Fr.D. – Friedrich Deubel; G.A. – Gabriela Andrei; G.C. – Gabriel Chișamera; I.A. – Ioana Andreescu; I.C. – Igor Ceianu; I.D. – Ion Drăghia; Io.C. – Iosif Căpușe; I.M. – Ioana Matache; I.N. – Ioan Nemeș; I.S. – Igor Sienkiewicz; I.Șt.I. – Ionuț Ștefan Iorgu; L.Ö.P. – Luis Ovidiu Popa; M.A. – Mircea Andrei; M.I. – Maria Iacob; M.V. – Marin Voicu; M.B. – Mihaela Barcan (Achim); M.W. – Medeea Weinberg; M.S. – Melanya Stan; M.S.P. – Mihai Șerban Procheș; N.R. – Năstase Rădulet; N.G. – Nicolae Gâldean; N.S. – Nicolae Săvulescu; P.G. – Pante Gherghel; R.A. – R. Albrecht; R.C. – Richard Canisius; R.S. – Rodica Serafim; S.St. – Steluța State; Șt.N. – Ștefan Negru; Th.W. – Th. Wanka; V.U. – Viorel Ungureanu; V.B. – Vladimir Brădescu; V.G. – Victor Gheorghiu; X.S.P. – Xenia Scobiola Palade.

Abbreviations of the county names in Romania:

AB – Alba; AG – Argeș; BC – Bacău; BR – Brăila; BV – Brașov; BZ – Buzău; CS – Caraș Severin; CL – Călărași; CJ – Cluj; CT – Constanța; DB – Dâmbovița; DJ – Dolj; GL – Galați; GJ – Gorj; GR – Giurgiu; HD – Hunedoara; HR – Harghita; IF – Ifov; IL – Ialomița; IS – Iași; MH – Mehedinți; MM – Maramureș; MS – Mureș; NT – Neamț; PH – Prahova; SB – Sibiu; SJ – Sălaj; SM – Satu Mare; SV – Suceava; TL – Tulcea; TR – Teleorman; VS – Vaslui; VL – Vâlcea; VN – Vrancea. București – Bucharest (capital city of Romania).

## RESULTS

The Chrysomelidae Collection of the “Grigore Antipa” National Museum of Natural History (Bucharest) includes 852 specimens representing 31 species belonging to four genera of Cassidinae, presented below. The species newly entered in the Museum collections are marked with \*.

Family Chrysomelidae Latreille, 1802

Subfamily Cassidinae Gyllenhal, 1813

Tribe Cassidini Gyllenhal, 1813

*Cassida* Linnaeus, 1758

*Cassida atrata* Fabricius, 1787

*Material*: 1 spec., Tușnad (HR), without other data, coll. I.C. (Fig. 1).

*Host plants*: Lamiaceae: *Salvia glutinosa*, *S. pratensis* (Borowiec, 2013).

\**Cassida aurora* Weise, 1907

*Material*: 1 spec., Maribor (Marburg), Slovenia, without other data, coll. Fr.D. (Fig. 2).

*Host plants*: Asteraceae: *Achillea millefolium*, *A. ptarmica* (Borowiec, 2013).

\**Cassida azurea* Fabricius, 1801

*Material*: 1 spec., Săbăreni (GR), 17.V.1958, I.S; 1 spec., Mező Záh (Zau de Câmpie) (MS), Zoppa, coll. Fr.D.

*Host plants*: Caryophyllaceae: *Saponaria officinalis*, *Silene alba*, *S. behen*, *S. conica*, *S. vulgaris* (Borowiec, 2013).

\**Cassida berolinensis* Suffrian, 1844

*Material*: 1 spec., Jegălia (CL), 26.V.1955, coll. I.C. (Fig. 3).

*Host plants*: Caryophyllaceae: *Minuartia viscosa*; Chenopodiaceae: *Atriplex sphaeromorpha*, *Chenopodium album*, *Salsola collina* (Borowiec, 2013).

*Cassida canaliculata* Laicharting, 1781

*Material:* 2 specs, Comana Forest (GR), without other data, coll. A.L.M.; 1 spec., Câmpulung Moldovenesc (SV), 13.IV.1953, coll. I.C.; 3 specs, Floristic Reserve “The Secular Hayfields from Valea lui David”, Iași (IS), 10.V.2012, I.Șt.I.; 2 specs, the Natural Reserve “Marine Sand Dunes of Agigea” (CT), 23.V.2012, I.Șt.I.; 1 spec., Hașag (SB), 26.V.2015, E.I.; 1 spec., Făcăeni (IF), 21.V.2017, G.C. (Fig. 4).

*Host plants:* Lamiaceae: *Salvia pratensis*, *S. verticillata* (Borowiec, 2013).

*Cassida deflorata* Suffrian, 1844

*Material:* 1 spec., Tunisia, near Bou Salem, Mejerda River, 27.III.2006, C.P. (Punia Expedition).

*Host plants:* Asteraceae: *Arctium lappa*, *Carduus tenuiflorus*, *Cirsium dysris*, *Cynara cardunculus*, *C. scolymus*, *Senecio cineraria*, *Silbum marianum* (Borowiec, 2013).

*Cassida denticollis* Suffrian, 1844

*Material:* 1 spec., Cehia, Moravia, Uherský Brod (Ungarisch Brod), without other data, Th.W.; 1 spec., Cernica Forest, București, 8.V.1962, I.D.; 1 spec., Chilia Veche (TL), 7.V.1964, M.W.; 1 spec., Cloșani (GJ), 16.VI.1992, C.P.; 1 spec., Canaraua Fetii (CT), 19.V.1993, C.H.; 1 spec., Dumbrăveni Forest (CT), 18.V.1994, C.H. (Fig. 5).

*Host plants:* Asteraceae: *Achillea millefolium*, *Artemisia absinthium*, *A. campestris*, *Tanacetum corymbosum*, *T. vulgare* (Borowiec, 2013).

*Cassida ferruginea* Goeze, 1777

*Material:* 1 spec., Cehia, Moravia, Uherský Brod (Ungarisch Brod), without other data, Th.W.; 2 specs, Mircești (IS), 23.V.1968; 1 spec., Bașta (NT), 23.V.1973. (Fig. 6).

*Host plants:* Asteraceae: *Inula salicina*, *Pulicaria dysenterica*, *P. prostrata*, *P. uliginosa* (Borowiec, 2013).



Fig. 1 – *Cassida atrata* (Photo I. Ș. Iorgu). Scale bar: 1 mm.



Fig. 2 – *Cassida aurora* (Photo I. Ș. Iorgu). Scale bar: 1 mm.

*Cassida flaveola* Thunberg, 1794

*Material*: 1 spec., without collecting data. In Romania, this species was mentioned from Hațeg, Sibiu, Arpad, Brașov (Petri, 1912), Zizin and Reghin (Kuthy, 1897). (Fig. 7).

*Host plants*: Caryophyllaceae: *Cerastium vulgatum*, *Honckenya peploides*, *Malachium aquaticum*, *Spergula arvensis*. *S. nemorum*, *Stellaria graminea*, *S. media* (Borowiec, 2013).

*Cassida hemisphaerica* Herbst, 1799

*Material*: 1 spec., Brașov, Tâmpa (Dealul Capelei = Kapellenberg) (BV), without other data, coll. Fr.D.; 1 spec., Bucovăț (DJ), 1.VIII.1951, X.S.P.; 1 spec., Sinaia (PH), IX.1957, I.S. (Fig. 8).

*Host plants*: Caryophyllaceae: *Dianthus campestris*, *D. caryophyllus*, *Gypsophila paniculata*, *Saponaria officinalis*, *Silene cucubalus*, *S. flos-cuculi*, *S. latifolia*, *S. latifolia* ssp. *alba*, *S. natans*, *S. vulgaris* (Borowiec, 2013).

\**Cassida lineola* Creutzer, 1799

*Material*: 1 spec., Hârșova (CT), without other data, coll. A.L.M.; 1 spec., without collecting data, coll. D.K.; 1 spec., Cerna (TL), 26.05.2005, C.B. (Fig. 9).

*Host plants*: Asteraceae: *Artemisia absinthium*, *A. austriaca*, *A. campestris*, *A. scoparia* (Borowiec, 2013.).

\**Cassida margaritacea* Schaller, 1783

*Material*: 2 specs, without collecting data, coll. D.K. In Romania, this species was recorded from Hașag, Sibiu and Tâlmaciu (Kuthy, 1897). (Fig. 10).

*Host plants*: Caryophyllaceae: *Saponaria officinalis*, *Silene inflata*, *S. latifolia*, *S. vulgaris*, *Spergula arvensis*; Asteraceae: *Antennaria margaritacea*, *Centaurea nemoralis*, *C. scabiosa*, *C. cyanus*, *C. stenolepis*, *Helichrysum arenarium* (Borowiec, 2013).



Fig. 3 – *Cassida berolinensis* (Photo I. Ș. Iorgu).  
Scale bar: 1 mm.



Fig. 4 – *Cassida canaliculata* (Photo I. Ș. Iorgu).  
Scale bar: 1 mm.

*Cassida murraea* Linnaeus, 1767

*Material:* 1 spec., Transylvania, without other data, coll. D.K.; 1 spec., Argeş (AG), without other data, coll. R.C.; 1 spec., Periş (IF), without other data, coll. R.C.; 6 specs, Comana Forest (GR), without other data, coll. A.L.M.; 1 spec., Brăila (BR), without other data, coll. A.L.M.; Cocioac, Bucureşti, 2.VII.1906, coll. F.S. (1 spec.), 25.VI.1907, coll. F.S. (1 spec.); Voineşti (DB), 24.V.1950, X.S.P. (1 spec.), 24.V.1954, X.S.P. (1 spec.); Pasărea Forest (IF), 4.V.1951, N.S. (1 spec.), 5.X.1966 (3 specs); 1 spec., Tulcea (TL), 3.VII.1952, N.S.; Herculane Baths (Băile Herculane) (CS), 5.VII.1953 (1 spec.), 18.V.1960, A.P.G. (3 specs), 19.V.1964, A.P.G. (2 specs), 17–25.V.1965, N.S., A.P.G. (6 specs), 28.V.1966, A.P.G. (1 spec.); 2 specs, Bârnova Forest (IS), 2–4.VI.1953, N.S.; Budeşti (CL), 28.VI.1954, X.S.P. (1 spec.), 9.VII.1957, N.S. (1 spec.); 1 spec., Băneasa Forest (IF), 4.V.1956, N.S.; 1 spec., Potelu (OT), 9.VI.1956; 1 spec., Cernica Forest (IF), 17.IV.1963, A.R.; 2 specs, Gădişti (NT), 11.V.1963–23.V.1965; 1 spec., Siseşti, Târgu Jiu (GJ), 7.07.1965; 1 spec., Stăniţa (NT), 7.V.1966; 1 spec., Ipoteşti (BT), 9.VI.1966, M.C.; Caraorman Forest, Danube Delta (TL), 9.V.1967–13.VI.1969, X.S.P. (2 specs), 24.VI.1991, P.G. (4 specs); Mirceşti (IS), 23.V.1968 (1 spec.), 1.VIII.1971 (1 spec.); 1 spec., Letea Forest, Danube Delta (TL), 12.VII.1971, N.S.; 1 spec., Eşelniţa (MH), 15.VI.1970, Şt.N.; Başta (NT), 17.V.1971 (1 spec.), 23.V.1973 (2 specs); 1 spec., Purani (TR), 28.IX.1979, G.A.; 1 spec., Tăuţii de Sus (MM), 12.IV.1985, X.S.P.; 2 specs, Poiana Neamţului (SB), 15.V.1986, I.M.; 1 spec., Călineşti Oaş (SM), 21.V.1987, R.S.; 1 spec., Ştiuculeasa Forest, Maxenu (BZ), 17.VII.1987, G.A.; 1 spec., Sihlea (VN), 23.VI.1987, C.P.; 2 specs, Maliuc, Danube Delta (TL), 25.VI.1991, Ad.R.; 1 spec., Căndeşti-Focşani (VN), 1.VIII.1994, Ad.R.; 1 spec., The hayfields of Cluj (Fânaţele Clujului) (CJ), 21.IV.1995, Ad.R.; Repedea f.c. (MM), 22.V.–26.VI.1997, R.S., C.P., I.M. (4 specs); 1 spec., Elma clearing, Repedea (MM), 27.VI.1997, C.P.; 1 spec., Turkey, Zorkun Yaylası (Osmaniye), 1800 m a.s.l., 5.V.1998, M.S.P.; 2 specs, Pleşca f.c., Ocna Şugatag (MM), 17.VII.1998, A.Pe.; 1 spec., Poiana Lindini, Nera Gorges (CS), 15.V.2002, M.S.; Coşnea f.c., Poienile de sub Munte (MM), 16.VI.2003, C.P. (12 specs), R.S. (46 specs); 1 spec., Bentul Mic Cotoi Lake, Bordenişani (IL), 22.VIII.2006, C.B. (Fig. 11).



Fig. 5 – *Cassida denticollis* (Photo I. Ş. Iorgu).  
Scale bar: 1 mm.



Fig. 6 – *Cassida ferruginea* (Photo I. Ş. Iorgu).  
Scale bar: 1 mm.

*Host plants:* Asteraceae: *Inula britannica*, *I. dysenterica*, *I. helenium*, *I. salicina*, *Carpesium abrotanoides*, *C. glossophyllum*, *Pulicaria prostrata* (Borowiec, 2013).

*Cassida nebulosa* Linnaeus, 1758

*Material:* 5 specs, Banat, 4.IV.1884–26.III.1885, without other data; 2 specs, Transylvania, without other data, coll. D.K.; 2 specs, București, without other data, coll. R.C.; 3 specs, Bârlad Valley (VS), without other data, coll. A.L.M.; 1 spec., Tuzla (CT), without other data, coll. A.L.M.; 1 spec., Ardeluța, Tarcău (NT), 24.V.1949, coll. I.C.; 1 spec., Ilișești (SV), 20.V.1950, coll. I.C.; 1 spec., Jegălia (CL), 4.IV.1957, coll. I.C.; 1 spec., Valu lui Traian (CT), 1957, X.S.P.; 1 spec., Comorova Forest, Mangalia (CT), 17.VI.1962, N.S.; 1 spec., Valley of the Nera River (CS), 10.VII.1976, A.P.G.; 2 specs, Budești (CL), 25.V.1979, G.A.; 1 spec., Plenița Forest, Căstrele Traiane (DJ), 8.X.1981, G.A.; 4 specs, Valley of the Motru River, Gura Motrului (MH), 21.VI.–19.VII.1983, C.P.; 1 spec., Drobeta-Turnu Severin (MH), 5.VI.1984, R.S.; 6 specs, Carei (SM), 14.V.1985, N.G.; 1 spec., Cărășeu (SM), 30.VII.1985, V.G.; 3 specs, Băneasa Forest (IF), 12.IV.1988, V.B.; 1 spec., Vasilați (CL), 18.V.1988, R.S.; 1 spec., Nuci (CL), V.1988, I.M.; 1 spec., Valea Oglănicului (MH), 300 m a.s.l., 2.VII.1990, Ad.R.; 1 spec., Lupșa Valley, Motru Sec (GJ), 18.VI.1992, N.R.; 1 spec., Caraorman Forest, Danube Delta (TL), 24.VIII.1992, A.P.; 1 spec., Hagieni Forest (CT), 10.VII.1992, C.P.; 1 spec., Negureni Forest (CT), 22.VII.1992, M.A.; Canaraua Fetii (CT), 19–20.V.1993, C.H. (9 specs), 23.VII.1993, G.A. (3 specs), 20.V.1994, G.A. (3 specs); 8 specs, Trăisteni (PH), 22–28.VI.1994, C.P., A.P.; 2 specs, Cârțișoara, Vama Cucului (SB), 2.VIII.1994, C.P.; 3 specs, Călugăreni (GR), 4.V.1996, C.P.; 2 specs, Sinaia, Cumpătu (PH), 27.V.1994, coll. I.C.; 1 spec., “Sfânta Ana” hermitage, Sinaia (PH), VI.1994, coll. I.C.; 1 spec., Pârâul Rece (BV), 9.VII.2004, V.U.

*Host plants:* Amaranthaceae: *Amaranthus ascendens*, *A. angostanus*, *A. retroflexus*; Chenopodiaceae: *Atriplex hastata*, *A. nitens*, *A. patula*, *A. hastatum*, *A. subcordata*, *Beta vulgaris* var. *altissima*, *B. vulgaris* var. *flavescens*, *Chenopodium*



Fig. 7 – *Cassida flaveola* (Photo I. Ș. Iorgu). Scale bar: 1 mm.



Fig. 8 – *Cassida hemispherica* (Photo I. Ș. Iorgu). Scale bar: 1 mm.

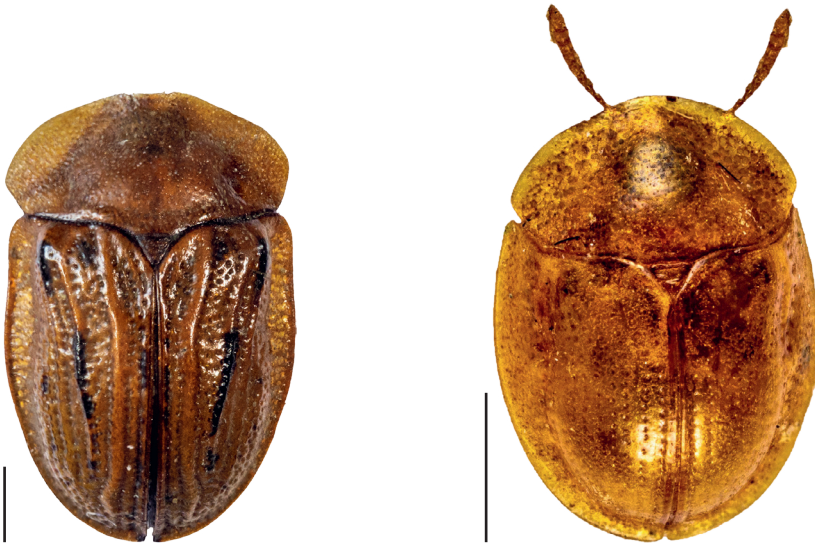


Fig. 9 – *Cassida lineola* (Photo I. Ș. Iorgu). Scale bar: 1 mm.

Fig. 10 – *Cassida margaritacea* (Photo I. Ș. Iorgu). Scale bar: 1 mm.

*album*, *C. album* var. *centrorubrum*, *C. rubrum*, *C. glaucum*, *C. bonus henricus*, *C. urbicum*, *C. polyspermum*, *C. vulvaria* (Borowiec, 2013).

*Cassida nobilis* Linnaeus, 1758

*Material*: 1 spec., Herculane Baths (Băile Herculane) (CS), 10.VI.1951, N.S.; București, 20.IV.1955 (1 spec.), 8.V.1983, C.C. (1 spec.), 10.IV.1994, C.H. (1 spec.); 1 spec., Lacul Sărat (BR), 28.V.1955, N.S.; 1 spec., Periprava (TL), 26.VII.1957, I.S.; 2 specs, Șcheia Forest (SV), 11.V.1959, I.N.; 1 spec., Prundu (GR), 2.IX.1976, M.A.; 1 spec., Pasărea Forest, Brănești (IF), 2.V.1977, M.A.; 1 spec., Golești (AG), 15.IX.1979, I.A.; 1 spec., Purani (TR), 28.IX.1979, G.A.; 1 spec., Tinosu (PH), 14.IV.1981, V.B.; 2 specs, Videle (TR), 11.VII.1986, I.M.; 1 spec., Pasărea Lake (IF), 2.V.2006, C.P.; 1 spec., Caracal (OT), without other data.

*Host plants*: Asteraceae: *Matricaria perforata*; Chenopodiaceae: *Beta vulgaris*, *Chenopodium album*, *C. rubrum*; Caryophyllaceae: *Silene vulgaris*, *Spergula arvensis*, *Stellaria media* (Borowiec, 2013).

\**Cassida pannonica* Suffrian, 1844

*Material*: 1 spec., Brașov Mts (Kronstädter Gerbirge), without other data, coll. Fr.D.; 1 spec., Hagieni Forest (CT), 23.VII.1964, M.W. (Fig. 12).

*Host plants*: Asteraceae: *Centaurea jacea*, *C. paniculata*, *Cynara scolymus*, *Erodium* sp., *Jurinea laxa* (Borowiec, 2013).

\**Cassida panzeri* Weise, 1907

*Material*: 1 spec., Pitești (AG), 3.VI.1960, N.S.; 1 spec., Letea Forest (TL), 9.V.1963, I.S.; 1 spec., Zboina, Vrancei Mts (VN), 10.VI.1971, A.G. (Fig. 13).

*Host plants*: Asteraceae: *Arctium lappa*, *Cirsium vulgare*, *C. arvense*, *Scorzonera humilis*, *Taraxacum officinale*, *Tragopogon pratensis* (Borowiec, 2013).



*Cassida prasina* Illiger, 1798

*Material:* 1 spec., Postăvaru Mt. (Schuler Gebirge), Braşov (BV), without other data, coll. Fr.D.; 1 spec., Cernica Forest, Bucureşti, 28.V.1955, I.D.; Comana (GR), 30.V.1962, I.S. (1 spec.), 12.VII.1963, Şt.N. (1 spec.); 1 spec., Agigea (CT), 27.V.1963, X.S.P.; 1 spec., Herculane (CS), 24.–27.V.1965, A.P.G.; Pasărea Forest, Brăneşti (IF), 16.VI.1966, A.R. (2 specs), 3.VI.2001, C.P. (1 spec.); 3 specs, Eşelniţa (MH), 17.VI.1970, A.R.; 1 spec., Nucet (DB), 15.VI.1970, I.A.; 1 spec., Perchiu (BC), 12.VI.1971; Cocoş Monastery (TL), 9.V.1973, A.P.G. (1 spec.), 10.VI.1973, A.C. (1 spec.); 3 specs, Hinova (MH), 7.VI.1984, R.S.; 1 spec., Călineşti Oaş (SM), 21.V.1987, R.S.; 1 spec., Tuzla (CT), 1.VIII.1992, A.S.; 1 spec., Dumbrăveni Forest (CT), 18.V.1994, C.H.; 1 spec., 2 specs, Floreşti (GR), 11.VI.1995, C.P.; Celic Dere Monastery (TL), 20.V.1997, C.P., C.H. (13 specs), 27.V.1997, R.S. (1 spec.); 1 spec., Valea Fagilor (TL), 23.V.1997, C.H.; 1 spec., Izvoarele (TL), 21.V.1997, C.P.; 1 spec., Ciucurova Forest (TL), 22.VI.1997, C.H.; 10 specs, Valley of Frumuşeaua River, 7 km upstream Crasna Vişeuului (MM), 25.VI.1997, A.S.; 2 specs, Bistra (MM), 25.VI.1997, A.S.; 1 spec., Elma clearing, Repedea (MM), 29.VI.1997, A.S.; 2 specs, Izvorul Dulce, Beceni (BZ), 9.VI.2002, V.U.; 1 spec., Cerna, Măcin Mountains National Park (TL), 26.V.2005, D.R.; 3 specs, Suluc Valley, Măcin Mountains National Park (TL), 27.V.2005, I.M.; 1 spec., Ogarca Forest, Vlaşin (GR), 22.VI.2006, R.S.; 2 specs, Măcin (TL), 10.V.2011, I.Şt.I.; 5 specs, Bârnova Forest (IS), 26.V.2011, I.Şt.I. (Fig. 14).

*Host plants:* *Achillea millefolium*, *A. ptarmica*, *Matricaria indora*, *Tanacetum vulgare* (Borowiec, 2013).

*Cassida rubiginosa rubiginosa* O. F. Müller, 1776

*Material:* 1 spec., Transylvania, without other data, coll. D.K.; 1 spec., Haţeg (Hatzeg) (HD), without other data, coll. D.K.; 2 specs, Bucureşti, without other data, coll. R.C.; 2 specs, Tuzla (CT), without other data, coll. A.L.M.; 1 spec., Herculane Baths (Băile Herculane) (CS), 10.VI.1951, N.S.; Câmpulung Moldovenesc (SV), 20.VI.1951, coll. I.C. (3 specs), 4.VI.1952, coll. I.C. (1 spec.); 2 specs, Piteşti (AG), 20.IV.1954, N.S.; Budeşti (CL), 30.V.1954, X.S.P. (3 specs), 25.V.1979, M.W. (1 spec.),



Fig. 11 – *Cassida murraea murraea* (Photo I. Ş. Iorgu). Scale bar: 1 mm.



Fig. 12 – *Cassida pannonica* (Photo I. Ş. Iorgu). Scale bar: 1 mm.

5–6.VI.1979, M.W., I.D. (5 specs); Căldărușani (IF), 17.X.1954, X.S.P. (1 spec.), 10.VI.1978, R.S. (1 spec.); Comana Forest (GR), 8.V.1955, N.S. (2 specs), 30.V.1974, A.P.G. (1 spec.), 31.V.1977, G.A. (2 specs), 11.IX.1979, G.A. (1 spec.), 4.VI.1980, C.P. (1 spec.), 19.V.2009, R.S. (2 specs); 1 spec., Șimleu Silvaniei (SJ), 12.VIII.1957, X.S.P.; Mogoșoaia Forest (IF), 9.V.1959, V.I.R. (1 spec.), 15.VI.1962, A.R. (1 spec.); Pasărea Forest (IF), 24.V.1962, I.D. (1 spec.), 20.VI.1978, R.S. (1 spec.), 2.V.2006, C.P. (2 specs); 4 specs, Tulcea (TL), 22.VI.1963, X.S.P.; 1 spec., Periprava, Danube Delta (TL), 2.VII.1963, X.S.P.; 1 spec., Chilia Veche (TL), 7.V.1964, I.S.; 1 spec., Agigea (CT), 12.VI.1964, N.S.; 1 spec., Borsec (HD), 11.VI.1967, V.I.R.; 2 specs, Valea Lungă, Câmpina (PH), 27.VII.1967, A.R.; 1 spec., Poiana Stâinii, Sinaia (PH), 14.VIII.1967, A.R.; 2 specs, Orșova (CS), 18.VI.1970, A.R.; 1 spec., Ogradena (MH), 21.VI.1970, X.S.P.; 1 spec., Bașta (NT), 17.V.1971; 1 spec, Bârlad (VS), 13.V.1973, A.R.; 1 spec., Cocoș Monastery (TL), 16.V.1975, A.C.; 7 specs, Lunca (TR), 31.V.1977, M.A.; 1 spec., Bălăria Forest (GR), 20.VI.1978, R.S.; Zăvestreni Forest (TR), 20.VI.1978, R.S. (2 specs), 3.V.1980, R.S. (2 specs); 1 spec., Râioasa Forest, Chitila (IF), 8.V.1979, G.A.; 4 specs, Căscioarele Forest, Dealu (IF), 7–8.VI.1979, R.S., G.A.; 1 spec., Valley of Argeș River, Buda Cornetu (IF), 2.VIII.1979, M.W.; 1 spec., Bălța Forest, Miroși (AG), 15.IV.1980, D.D.; 14 specs, Nanov Forest (TR), 13–14.VI.1980, I.M., R.S., I.D.; 2 specs, Palanca Forest, Nicolae Titulescu (OT), 24.VI.1980, R.S.; 1 spec., Bistreț (DJ), 24.VI.1981, R.S.; 1 spec., Săbăreni (GR), 7.IV.1982; 2 specs, Mușa Forest, Drobeta-Turnu Severin (MH), 5.VI.1984, I.M.; 1 spec., Livada (SM), 12.VI.1985, R.S.; 1 spec., Halmeu Vii (SM), 13.VI.1985, R.S.; 2 specs, Căuaș (SM), 29.VI.1985, M.A.; 1 spec., Moftin (SM), 1.VII.1985, G.A.; 1 spec., Sâmbăta de Sus (SB), 4.VII.1985, N.G.; 1 spec., Cămârzana (SM), 19.V.1987, C.P.; 3 specs, Dridu (IL), 11.VI.1987, R.S., C.P.; 1 spec., Gălbinași (CL), 11.V.1988, R.S.; 1 spec., Canaraua Fetii (CT), 19.V.1993, M.B.; 2 specs, Trăisteni (PH), 23.VI.1994, C.P.; 1 spec., Strâmtura (MM), 3.VII.1995, C.P.; 2 specs, Revărsarea (TL), 23.V.1997, C.P.; 4 specs, Repedea f.c. (MM), 22–26.VI.1997, R.S., C.P.; 2 specs, Crasna Vișeuului (MM), 25.VI.1997, R.S.; 2 specs, Galeș (AG),



Fig. 13 – *Cassida panzeri* (Photo I. Ș. Iorgu). Scale bar: 1 mm.



Fig. 14 – *Cassida prasina* (Photo I. Ș. Iorgu). Scale bar: 1 mm.

21.VII.2001, C.P.; 2 specs, Valley of Bârsa Mare River, “Piatra Craiului” National Park (BV), 4.VII.2000–2.VII.2002, A.S., C.P.; 1 spec., the confluence of the Rica and Budescu rivers, Poienile de sub Munte (MM), 14.VI.2003, C.P.; 1 spec., Valea Fagilor (TL), 24.V.2005, R.S.; 1 spec., Șaua Sehleanu, the Maramureș Mountains Natural Park (MM), 13.VI.2007, C.P.; 1 spec., Sărata (SB), 4.V.2007, C.B.; 3 specs, Bârnova Forest (IS), 26.V.2011, I.Șt.I.

*Host plants:* Asteraceae: *Arctium lappa*, *Artemisia maritima*, *Carduus acanthoides*, *C. argemone* ssp. *obtusisquamosus*, *C. crispus*, *C. nutans*, *Centaurea jacea*, *C. pectinata*, *Cirsium acaule*, *C. arvense*, *C. chrysacanthum*, *C. eryophorum*, *C. incanum*, *C. lanceolatum*, *C. palustre*, *C. oleraceum*, *C. rivulare*, *C. ucrainicus*, *C. vulgare*, *Cynara cardunculus*, *C. scolymus*, *Inula helenium*, *Onopordum* sp., *Pulicaria* sp., *Saussurea tanakae*, *Serratula tinctoria*, *Silybum marianum*, *Tanacetum* sp. (Borowiec, 2013).

*Cassida rufovirens* Suffrian, 1844

*Material:* 1 spec., Brașov, Tâmpa (Dealul Capelei = Kapellenberg) (BV), without other data, coll. Fr.D.; 1 spec., Predeal (BV), 27.X.1964; 1 spec., Eșelnița (MH), 16.VI.1970, A.R.; 1 spec., Gherăiești, Bacău (BC), 18.VIII.1972, A.G.; 1 spec., Babadag Forest (TL), 14.VI.1973, A.G.; 2 specs, Piatra Craiului National Park, Sățic (AG), 22.VI.2005, M.S. (Fig. 15).

*Host plants:* Asteraceae: *Achillea* sp., *Anthemis nobilis*, *Chamomilla recutita*, *Matricaria chamomilla*, *M. indora*, *M. perforata*, *M. tzvelevii* (Borowiec, 2013).

*Cassida sanguinolenta* O. F. Müller, 1776

*Material:* 1 spec., Sisești (MH), VI.1954; 3 specs, Greci (TL), 26.V.1961, X.S.P.; 1 spec., Herculane Baths (Băile Herculane) (CS), 14.V.1964, A.P.G.; 1 spec., Pasărea Forest (IF), 16.VI.1966, A.R.; 1 spec., Nucet (DB), 15.VII.1970, I.A.; 1 spec., Valea Crișului Pietros, Bihor Mts. (BH), 1.VII.1976, G.A.; 1 spec., Dumbrăveni Forest (CT), 18.V.1994, C.H.; 5 specs, Valley of Frumușeaua River, 7 km upstream Crasna Vișeuului, 23.VI.1997, R.S.

*Host plants:* Asteraceae: *Achillea millefolium*, *Tanacetum vulgare* (Borowiec, 2013).

\**Cassida sanguinosa* Suffrian, 1844

*Material:* 1 spec., Germany, without other data, coll. Ed.R. (Fig. 16).

*Host plants:* Asteraceae: *Achillea ptarmica*, *A. millefolium*, *Tanacetum vulgare* (Borowiec, 2013).

\**Cassida seladonia* Gyllenhal, 1827

*Material:* 1 spec., Chilia Veche (TL), 7.V.1964, I.S. (Fig. 17).

*Host plants:* Asteraceae: *Artemisia arenaria*, *A. campestris*, *Filago arvensis*, *F. gallica*, *Helichrysum arenarium*, *H. corymbiformis* (Borowiec, 2013).

*Cassida stigmatica* Suffrian, 1844

*Material:* 1 spec., without collecting data; 1 spec., Chilia Veche (TL), 7.V.1964, M.W.

*Host plants:* Asteraceae: *Achillea millefolium*, *Artemisia nitrosa*, *A. arbotanum*, *Tanacetum vulgare* (Borowiec, 2013).



Fig. 15 – *Cassida rufovirens* (Photo I. Ș. Iorgu).  
Scale bar: 1 mm.



Fig. 16 – *Cassida sanguinosa* (Photo I. Ș. Iorgu).  
Scale bar: 1 mm.

*\*Cassida subreticulata* Suffrian, 1844

*Material:* 1 spec., Vurpăr (Burgberg), 20.V., without other data; 1 spec., Pasărea Forest, Brănești (IF), 16.VI.1966, R.A.; 1 spec., Eșelnița (MH), 20.VI.1970.

*Host plants:* Caryophyllaceae: *Dianthus squarrosus*, *Melandryum album*, *Saponaria officinalis*, *Silene vulgaris*, *S. dioica* (Borowiec, 2013).

*Cassida vibex* Linnaeus, 1767

*Material:* 1 spec., Transylvania, without other data, coll. D.K.; 2 specs, Bârlad Valley (VS), without other data, coll. A.L.M.; 1 spec., Budești (CL), 3.V.1953, X.S.P.; 3 specs, Ilișești (SV), 20.V.1950, coll. I.C.; 1 spec., Esecchio (CT), 19.V.1958, N.S.; 1 spec., Pasărea Forest (IF), 27.V.1958, N.S.; 1 spec., Căldărușani (IF), 15.VII.1959, I.S.; 1 spec., Periprava, Danube Delta (TL), 11.VII.1960, M.W.; 1 spec., Plesiva, Anina Mts (CS), 24.VI.1962, coll. I.C.; 1 spec., Câmpulung Moldovenesc, Cocou (SV), 20.VII.1962; 1 spec., Tulnici (VN), 22.VII.1962, A.R.; 1 spec., Agigea (CT), 27.V.1963, X.S.P.; 2 specs, Chilia Veche, Danube Delta (TL), 7.V.1964, I.S.; 1 spec., Roșu Mt., Ciucaș Mts. (PH), 7.VII.1966, M.C.; 1 spec., Duruitoarea waterfall, Ceahlău Massif (NT), 9.VIII.1966, M.V.; 1 spec., Dealul Mărului Forest, Roman (NT), 13.VI.1967; 1 spec., Caraorman Forest, Danube Delta (TL), 21.X.1969, M.W.; 1 spec., Eșelnița (MH), 17.VI.1970, A.R.; 1 spec., Orșova (MH), 18.VI.1970, A.R.; 2 specs, Nanov Forest (TR), 14.VI.1980, I.M.; 1 spec., Strehaia (MH), 11.V.1982, G.A.; 1 spec., Livada (SM), 12.VI.1985, I.M.; 1 spec., Valley of the Bulba River, Baia de Aramă (MH), 17.VI.1982, R.S.; 1 spec., Lupșa Valley, Motru Sec (GJ), 18.VI.1992, N.R.; 1 spec., Canaraua Fetii (CT), 19.V.1993, C.H.; 1 spec., Celic Dere Monastery (TL), 24.V.1997, R.S.; 3 specs, Smerecenii clearing, 7 km towards the Repedea (MM), 22–27.VI.1997, R.S., A.S.; 1 spec., Repedea f.c. (MM), 29.VI.1997, D.R.; 1 spec., Vișeu de Jos (MM), 22.VIII.1997, E.R.; 1 spec., Mara (MM), 21.VII.1998, I.M.; 1 spec., Gârliștea Gorges (CS), 8.VIII.2001, C.P.; 3 specs, Coșnea f.c., Poienile de sub Munte (MM), 15–16.VI.2003, C.P.; 1 spec., Pietrișu island, Danube River at kilometer 760, 16.V.2004, C.P.;

1 spec., Belciugatele (CL), 13.VII.2005, V.U.; 1 spec., Letea Forest, Danube Delta (TL), 4.V.2012, I.Șt.I.; 2 specs, Sadu (SB), 31.V.2012, I.Șt.I.; 1 spec., Râmeț Gorges, Trascău Mts (AB), 2.VI.2012, I.Șt.I.; 10 specs, Floristic Reserve “The Secular Hayfields from Valea lui David”, Iași (IS), 10–18.V.2012, I.Șt.I.; 1 spec., Lepșa (VN), 30.V.2015, A.L.; 2 specs, Valea Strâmbă, Lepșa (VN), 31.V.2015, A.L.

*Host plants:* Asteraceae: *Arctium lappa*, *A. minus*, *A. nemorosum*, *Carduus acanthoides*, *Cirsium arvense*, *C. oleraceum*, *C. palustre*, *C. rivulare*, *C. lanceolatum*, *Centaurea carpathica*, *C. scabiosa*, *Tanacetum vulgare* (Borowiec, 2013).

### *Cassida viridis* Linnaeus, 1758

*Material:* 1 spec., Gorj County, without other data, coll. R.C.; 2 specs, Vâlcea County, without other data, coll. R.C.; 3 specs, Carpathian Mountains (Moldavia), without other data, coll. A.L.M.; Herculane Baths (Băile Herculane) (CS), 1950, coll. E.V. (1 spec.), 15.V.1952, N.S. (1 spec.), 20.V.1964, N.S. (1 spec.), 23.VII.1965, N.S. (1 spec.), 4.VII.1968, V.B. (4 specs), 28.V.1974, coll. I.C. (1 spec.); 3 specs, Cernica Forest (IF), V.1945, coll. I.C.; 1 spec., Câmpulung Moldovenesc, Deia (SV), 27.V.1951, coll. I.C.; 1 spec., Gura Humorului (SV), 15.X.1951, coll. I.C.; 1 spec., Bârnova Forest (IS), 2.VI.1953, N.S.; 1 spec., Chitila (București), 19.V.1953, X.S.P.; 1 spec., Zăganu Mt., Ciucaș Mts, VII.1953, coll. I.C.; 1 spec., Șandru, Câmpulung Moldovenesc (SV), 23.V.1953, coll. I.C.; 1 spec., Băneasa Forest (IF), 24.V.1954, A.R.; 1 spec., Sisești (MH), VI.1954; 1 spec., Mogoșoaia Forest (IF), 9.V.1956; 1 spec., Țigănești (Ciolpani) (IF), 10.VIII.1956, X.S.P.; Comana Forest (GR), 31.V.1956 (2 specs), 18.V.1959, I.S. (5 specs), 23.VI.1976 (3 specs), 9.VIII.1979, R.S. (2 specs), 3.VI.1998, M.S.P (1 spec.), 4.V.–7.VI.2006, R.S. (6 specs); 9 specs, Căldărușani (IF), 31.V.1957, X.S.P.; 2 specs, Timișu de Sus (BV), 21.VI.–4.VII.1957, coll. I.C.; 6 specs, Sinaia (PH), 12.VI.–9.VII.1958, A.R.; 1 spec., Negrișoara (SV), 13.V.1958, coll. I.C.; 1 spec., Baraolt (CV), 1.VIII.1958, coll. I.C.; 4 specs, Omu rivulet, Broșteni (SV), 30.V.1958, coll. I.C.; 3 specs, Timișoara, Green Forest (Pădurea Verde) (TM), 10.V.1960, coll. I.C.; 1 spec., Voinești (DB), 18.VI.1961, A.R.; 1 spec., Oradea (BH), 30.V.1962, coll. I.C.; 1 spec., București, 12.VII.1963, A.R.; 2 specs, Baia Mare (MM), 7.VI.1963, A.R.; 9 specs, Chilia Veche, Danube Delta (TL), 7.V.1964, I.S.; 1 spec., Vaideeni (VL), 10.V.1964, Io.C.; 6 specs, Șarânga clearing, Sinaia (PH), 28.V.1964, Șt.N.; 1 spec., Caraorman Forest, Danube Delta (TL), 5.V.1968, A.P.G.; 1 spec., Domogled Mt. (CS), 2.VI.1965, A.P.G.; 1 spec., Hagieni Forest (CT), 7.VI.1965, Șt.N.; 1 spec., Borsec (HR), 14.VI.1966, X.S.P.; 5 specs, Periprava, Danube Delta (TL), 17.VII.–14.X.1966, X.S.P.; 1 spec., Nanov (TR), 2.X.1966, X.S.P.; 1 spec., Suzana Monastery, Măneciu (PH), 29.VII.1967, X.S.P.; Caraorman Forest, Danube Delta (TL), 21.IX.1967, M.W. (1 spec.), 5.VI.1968, A.P.G. (1 spec.), 29.VIII.1969, M.W. (1 spec.); Putna Valley (SV), 13.V.–17.VI.1971, coll. I.C. (3 specs), 17.V.1972, coll. I.C. (1 spec.), 17.V.1982, coll. I.C. (1 spec.), 23.V.1983, coll. I.C. (2 specs), 22.V.1984, coll. I.C. (1 spec.); 1 spec., Bălătau Lake, Nemira Mts (BC), 10.V.1971; 2 specs, Slânic Moldova (BC), 7.V.–10.VI.1971, M.I.; 2 specs, Sfântu Gheorghe, Danube Delta (TL), 9.VIII.1972, A.P.G.; 1 spec., Gădiinți (NT), 20.VII.1972; 1 spec., Bașta (NT), 23.V.1973; 2 specs, Pasărea Forest (IF), 30.VI.1978, G.A.; 1 spec., Drăgănești Vlașca (TR), 20.VI.1979, M.W.; 1 spec., Căldăraru Forest (TR), 27.IX.1979, R.S.; 1 spec., Purani (TR), 27.IX.1979, G.A.; 1 spec., Gura Motrului (MH), 29.VII.1981, I.M.; 1 spec., Cobia Forest (DJ), 19.VI.1981, C.P.; 1 spec., Poiana Mare (DJ), 6.VIII.1982, C.P.; 1 spec., Perișor (DJ), 24.IX.1982, G.A.; 2 specs, Vânju Mare (MH), 15.VII.1983, I.M.; 1 spec., Hinova (MH), 7.VI.1984, I.M.; 1 spec., Cărășeu (SM), 30.VII.1985, V.G.; Poiana Neamțului (SB), 19–20.VII.1985, I.M., R.S. (6 specs),

14–15.V.1986, I.M., I.D. (14 specs); 5 specs, Turnu Roșu (SB), 13.V.1986, I.M.; 2 specs, Călinești Oaș (SM), 21.V.1987, R.S.; 2 specs, Vatra Dornei (SV), 30.V.1989, V.B.; 1 spec., Valea Drăganului (CJ), 8.VIII.1989, R.S.; 2 specs, Giulești Sârbi (IF), 8.VII.1991; 2 specs, Cloșani (GJ), 16.VI.1992, C.P.; 1 spec., Doloșman Cape, Razim (Razelm) Lake (TL), 11.V.1992, N.G.; Hagieni Forest (CT), 22.V.1993, C.P. (1 spec.), 18.VII.1997, C.P. (2 specs); 1 spec., Aleșd, Plopiș Mts (BH), 24.IV.1994, A.S.; 2 specs, Trăisteni (PH), 22–28.VI.1994, A.P.; 1 spec., Vama Cucului, Făgăraș Mts, I.VIII.1994, C.H.; 1 spec., Strâmtura (MM), 3.VII.1995, C.P.; 2 specs, Călugăreni (GR), 4.V.1996, C.P.; 2 specs, Smereceni clearing, 7 km towards the Repedeș (MM), 22.VI.1997, R.S., A.S.; 5 specs, Repedeș f.c. (MM), 22.VI.–2.VII.1997, R.S., A.S., I.M.; 7 specs, Elma clearing, Repedeș (MM), 24–29.VI.1997, R.S., A.S., C.P.; 1 spec., Valea Teilor (TL), 22.V.1997, C.P.; 1 spec., Revărsarea (TL), 23.V.1997, C.P.; 9 specs, Valley of Frumușeaua River, 7 km upstream Crasna Vișeuului, 23.VI.1997, C.P., R.S.; 1 spec., Buzău (BZ), 17.IV.2000, V.U.; 1 spec., Bârsa Groșetului, 4 km upstream Plaiul Foi, Piatra Craiului National Park (BV), 9.VI.2000, C.P.; Valley of Bârsa River, Piatra Craiului National Park (BV), 4.VII.2000, L.O.P. (2 specs), 24.V.2004, R.S. (2 specs); 1 spec., Piscul cu Brazi, Piatra Craiului National Park (BV), 5.VII.2000, L.O.P.; 1 spec., Bârsa Fierului Valley, Piatra Craiului National Park, 24.V.2004, C.B.; 3 specs, the confluence of the Rica and Budescu rivers, Poienile de sub Munte (MM), 14.VI.2003, C.P.; 2 specs, 17 km far from Reșița, towards Văliug (CS), 10.VIII.2001, A.S.; 1 spec., Valley of Budescu Mare River, Poienile de sub Munte (MM), 14.VI.2003, M.S.; 1 spec., Coșnea f.c., Poienile de sub Munte (MM), 16.VI.2003, C.P.; 2 specs Valley of the Pop Ivan River, 11 km upstream Crasna Vișeuului (MM), 17.VI.2003, R.S., D.S.; 1 spec., Crasna Vișeuului (MM), 17.VI.2003, M.S.; 2 specs, Repedeș f.c. Repedeș (MM), 18.VI.2003, R.S., C.P.; Făina, Vaser Valley Forestry Railway (MM), 19.VI.2003, R.S., C.P. (2 specs), 21.VII.2004, C.P. (1 spec.); 3 specs, Baicu f.c., Țibleș Mts, Dragomirești (MM), 22.VI.2003, R.S.; 1 spec., Pălcuț rivulet, Dragomirești (MM), 22.VI.2003, C.P.; 3 specs, Țibleș Mts, Dragomirești, Lunca lui Cosiță (MM), 22.06.2003, R.S.; 3 specs, Zărnești Gorges, Piatra Craiului National Park (BV), 22.V.2004, C.B., C.P.; 1 spec., Piatra Craiului National Park, Sățic, Onceoia Valley (AG), 23.V.2004, S.R.; 1 spec., Făgăraș Mts, Otic Valley, 4.VIII.2004, R.S.; 2 specs, Piatra Craiului National Park, Brusturet chalet, Valea Seacă (AG), 21.VI.2005, C.B.; 1 spec., Piatra Craiului National Park, Sățic (AG), 22.06.2005, M.S.; 1 spec., Piatra Craiului National Park, Valea cu Apă, 23.VI.2005, E.I.; 4 specs, Preluca (MM), 12.VI.2007, C.P.; 1 spec., Letea Forest, Danube Delta (TL), 22.IX.2010, I.Șt.I.; 1 spec., Rodina (CS), 20.VII.2011, I.Șt.I.; 2 specs, Jidoaia (VL), 21.V.2014, E.I.; 1 spec., Lepșa (VN), 30.V.2015, A.M.K.

*Host plants:* Lamiaceae: *Galeopsis grandiflora*, *G. speciosa*, *G. tetrahit*, *G. pubescens*, *Isodon kameba*, *Lycopus europaeus*, *Melissa officinalis*, *Mentha aquatica*, *M. arvensis*, *M. longifolia*, *M. rotundifolia*, *M. suaveolens*, *M. verticillata*, *Nepeta cataria*, *Salvia glutinosa*, *S. officinalis*, *S. pratensis*, *S. palustris*, *S. recta*, *S. silvatica* (Borowiec, 2013).

#### *Cassida vittata* Villers, 1789

*Material:* 1 spec., without collecting data, coll. I.C.

In Romania, this species was recorded from Rodnei Mts (Petri, 1912); Sibiu and Reghin (Kuthy, 1897); Bucharest (Serafim & Maican, 2008).

*Host plants:* Asteraceae: *Anthemis arvensis*, *Matricaria perforata*; Chenopodiaceae: *Atriplex halimus*, *A. prostrata*, *Chenopodium album*, *C. rubrum*,

*Salicornia* sp., *Salsola* sp., *Spinacia oleracea*; Urticaceae: *Urtica dioica*; Caryophyllaceae: *Arenaria maritima*, *Spergula arvensis*, *Spergularia salina* (Borowiec, 2013).

*Pilemostoma* Desbrochers Des Loges, 1891

\**Pilemostoma fastuosum* (Schaller, 1783)

*Material*: 1 spec., Transylvania, without other data, coll. D.K.; 1 spec., Greci (TL), 22.VI.1963, I.S.; 1 spec., Letea Forest, Danube Delta (TL), 12.V.1964, X.S.P.; 1 spec., Herculane Baths (Băile Herculane) (CS), 19.V.1964, A.P.G.; 2 specs, Gâdiniți (NT), 23.V.1965; 1 spec., Caraorman Forest, Danube Delta (TL), 5.V.1968, A.P.G.; 1 spec., Bașta (NT), 23.V.1973; 3 specs, Floristic Reserve “The Secular Hayfields from Valea lui David”, Iași (IS), 9–10.VI.1984, I.D., A.P.G. (Fig. 18).

*Host plants*: Asteraceae: *Inula* sp., *Pulicaria dysenterica*, *P. vulgaris*, *Senecio jacobaea* (Borowiec, 2013).

Tribe Hispini Gyllenhal, 1813

*Dicladispa* Gestro, 1897

*Dicladispa testacea* (Linnaeus, 1767)

*Material*: 1 spec., Turkey, Kahramanmaraş Province, Kahramanmaraş, 570 m a.s.l., 1.VI.2008, C.P. (“Euphrates” Expedition).

*Host plants*: Cistaceae: *Cistus* sp., *Halimium* sp., *Helianthemum* sp.; Anacardiaceae: *Pistacia lentiscus* (Biondi et al., 1995; Świętojańska et al., 2014).

*Hispa* Linnaeus, 1767

*Hispa atra* Linnaeus, 1767

*Material*: 1 spec., without collecting data, coll. I.C.; 1 spec., Mireșu Mare (Nagynyires) (MM), without other data, coll. E.V.; 3 specs, Cetățuia, Danube River at kilometer 516 (GR), 26.IV.2004, M.S.; 1 spec., București, Cișmigiu Park, IX.2007, S.St.

*Host plants*: Poaceae: *Poa* sp., *Agropyron* sp. (Mohr, 1966).



Fig. 17 – *Cassida seladonia* (Photo I. Ș. Iorgu).  
Scale bar: 1 mm.



Fig. 18 – *Pilemostoma fastuosum* (Photo I. Ș. Iorgu).  
Scale bar: 1 mm.

The new Chrysomelidae collection of the “Grigore Antipa” National Museum of Natural History preserves 31 species of Cassidinae belonging to genera *Cassida* (28 species), *Pilemostoma*, *Hispa* and *Dicladispa* (each with one species), representing over 90% of the total number of species recorded in the Romanian fauna. Out of them, 11 species recently entered in the Museum collections.

A number of 20 species are also found in the Collection of Palaearctic Coleoptera, represented mainly by the material collected by Eduard Fleck and Arnold Lucien Montandon. The Eduard Fleck collection (acquired by the museum in 1914) includes one specimen of *Ischyronota desertorum* Gebler, labeled “Azuga”, without other collecting data. Unfortunately, in the collection many labels are printed with “Azuga”, however this does not mean that the specimens were collected from this locality.

Common species of Romania (e.g., *Cassida murraea* Linnaeus, *C. rubiginosa* Müller, *C. vibex* Linnaeus, *C. viridis* Linnaeus, *C. nebulosa* Linnaeus) are represented in the collection through a great number of specimens.

Some rare species in the Romanian fauna are newly entered in the collections of “Grigore Antipa” Museum, such as: *Cassida atrata* Fabricius, *C. azurea* Fabricius, *C. berolinensis* Suffrian, *C. margaritacea* Schaller, *C. pannonica* Suffrian, *C. seladonia* Gyllenhal, *C. subreticulata* Suffrian.

Most of the material was collected from Romania. The collection also includes some specimens from Slovenia (of the species *Cassida aurora* Weise), Czechia (*Cassida denticollis* Suffrian and *C. ferruginea* Goeze), Germany (*C. sanguinosa* Suffrian), Tunisia (*Cassida deflorata* Suffrian) and Turkey (*Cassida murraea* Linnaeus and *Dicladispa testacea* Linnaeus).

*Cassida deflorata* Suffrian, represented in the collection by one specimen from Tunisia, is a Mediterranean species, distributed in north-western Africa, Iberian Peninsula, Sardinia, Sicily and Italy (Warchałowski, 2010). Fleck (1905), most probably erroneously, mentioned it from Romania (Bucharest and Băneasa). The records of this species in Romanian fauna is questionable.

*Dicladispa testacea* Linnaeus, a species distributed in the Mediterranean area, is represented in the collection by the material collected from Turkey, in the “Euphrates” Expedition.

#### ACKNOWLEDGMENTS

The authors express sincere thanks to Dr. Melanya Stan (“Grigore Antipa” National Museum of Natural History, Bucharest) for granting access to the collections, and to Dr. Ottó Merkl (Hungarian Natural History Museum, Budapest) for his constructive comments on the manuscript. Many thanks to Dr. Ionuț Ștefan Iorgu and Dr. Tiberiu Sahlean for photographs, and also to Rada Tiță, Marinela Năzăreanu, Marcela Bugnar, Mariana Foltin and Dana Ciopec for their help in preparation and labeling of the specimens and the proper conservation of collections. A part of this study was funded by project no. RO1567-IBB01/2017 from the Institute of Biology Bucharest of Romanian Academy.

#### REFERENCES

- BIONDI, M., R. REGALIN, M. DACCARDI, R. POGGI (1995) I Crisomelidi (esclusi Alticini) delle Isole Circumsarde. *Annali del Museo Civico di Storia Naturale “G. Doria”*, 90: 629–651. (in Italian)
- BOROWIEC, L. (1999) A world catalogue of the Cassidinae (Coleoptera: Chrysomelidae). *Biologica Silesiae*. Wrocław, 476 pp.
- BOROWIEC, L. (2013) Website resource of the Department of Biodiversity and Evolutionary Taxonomy, University of Wrocław. Available at: <http://culex.biol.uni.wroc.pl/cassidae/European%20Chrysomelidae/index.htm>. Downloaded on 5 August 2017.



- BOROWIEC, L., L. SEKERKA (2010) Subfamily Cassidinae Gyllenhal, 1813. Pp. 368–389. *In*: I. Löbl, A. Smetana (eds), Catalogue of Palaearctic Coleoptera, Vol. 6, Chrysomeloidea. Apollo Books, Stenstrup, 924 pp.
- BOROWIEC, L., J. ŚWIĘTOJANSKA (2002–2017) Cassidinae of the world - an interactive manual (Coleoptera: Chrysomelidae). Department of Biodiversity and Evolutionary Taxonomy, University of Wrocław, Poland. Available at: <http://www.biol.uni.wroc.pl/cassidae/katalog%20internetowy/index.htm> Downloaded on 5 August 2017.
- BOROWIEC, L., J. ŚWIĘTOJANSKA (2014). Cassidinae Gyllenhal, 1813. Pp. 198–217. *In*: R.A.B. Leschen, R.G. Beutel (eds.) Coleoptera Beetles, Vol. 3, Morphology and Systematics: Phytophaga. Walter de Gruyter GmbH & Co KG, Göttingen, 675 pp.
- CHABO, C.S. (2007). Biology and phylogeny of the Cassidinae Gyllenhal *sensu lato* (tortoise and leaf-mining beetles) (Coleoptera: Chrysomelidae). Bulletin of the American Museum of Natural History, 305: 1–250.
- FLECK, E. (1905) Die Coleopteren Rumäniens. Bulletin de la Société des Sciences de Bucarest, 14: 695–729. (in German)
- HOINIC, C. (1994) A review of the species of *Macrolea* Samouelle (Coleoptera: Chrysomelidae) in Romania. Travaux du Muséum d’Histoire Naturelle “Grigore Antipa”, 34: 17–30.
- KUTHY, D. (1897) Ordo Coleoptera. *In*: A Magyar Birodalom Állatvilága (Fauna Regni Hungariae). III. Arthropoda. (Insecta. Coleoptera.). Királyi Magyar Természettudományi Társulat, Budapest, 213 pp. (in Hungarian and Latin).
- MAICAN, S. (2005) Checklist of Chrysomelidae (Coleoptera) of Romania. Travaux du Muséum National d’Histoire Naturelle “Grigore Antipa”, 48: 119–136.
- MAICAN, S. (2006) Clytrins (Coleoptera: Chrysomelidae: Clytrinae) from the collections of the “Grigore Antipa” National Museum of Natural History (Bucharest). Travaux du Muséum National d’Histoire Naturelle “Grigore Antipa”, 49: 239–257.
- MAICAN, S. (2007a) Some mediterranean Chrysomelids species (Coleoptera: Chrysomelidae) newly entered in the collections of “Grigore Antipa” National Museum of Natural History [Results of expeditions from Turkey and Tunisia, 2005–2006]. Travaux du Muséum National d’Histoire Naturelle “Grigore Antipa”, 50: 421–429.
- MAICAN, S. (2007b) Contributions to the knowledge of the leaf beetle fauna (Coleoptera: Chrysomelidae) from Maramureş (northern Romania). Entomologica Romanica, 12: 301–324.
- MAICAN, S., R. SERAFIM (2001) Chrysomelidae (Coleoptera) from Maramureş. Travaux du Muséum National d’Histoire Naturelle “Grigore Antipa”, 43: 199–233.
- MAICAN, S., R. SERAFIM (2004) Leaf-beetles (Coleoptera: Chrysomelidae) from Maramureş (Romania). Travaux du Muséum National d’Histoire Naturelle “Grigore Antipa”, 46: 139–159.
- MAICAN, S., R. SERAFIM (2009) Data about Cerambycidae and Chrysomelidae (Coleoptera: Chrysomeloidea) collected from mediterranean expeditions [Results of the “Taurus” 2005, “Focida” 2006, “Punia” 2006, “Atlas” 2007 and “Euphrates” 2008 expeditions]. Travaux du Muséum National d’Histoire Naturelle “Grigore Antipa”, 52: 415–428.
- MAICAN, S., R. SERAFIM (2012) Overview on the Chrysomeloidea superfamily (Coleoptera: Cerambycidae, Orsodacnidae, Chrysomelidae) in Dobrogea (Romania). Travaux du Muséum National d’Histoire Naturelle “Grigore Antipa”, 55 (1): 65–123.
- MAICAN, S., R. SERAFIM (2016) The catalogue of Donaciinae and Criocerinae species (Coleoptera: Chrysomelidae) from the new leaf beetle collection from “Grigore Antipa” National Museum of Natural History (Bucharest) (Part I). Travaux du Muséum National d’Histoire Naturelle “Grigore Antipa”, 59 (2): 179–194.
- MOHR, K.-H. (1966) Familie Chrysomelidae. Pp. 95–280. *In*: H. Freude, K. W. Harde, G. A. Lohse (eds.), Die Käfer Mitteleuropas, Band 9, Cerambycidae, Chrysomelidae. Goecke & Evers Verlag, Krefeld, 299 pp.
- NEGRU, ŞT. (1968) Ord. Coleoptera (pars). *In*: Entomofauna de l’île de Letea (Delta du Danube). Travaux du Muséum d’Histoire Naturelle “Grigore Antipa”, 9: 81–95. (in French)
- NEGRU, ŞT., A. ROŞCA (1967) Ord. Coleoptera. *In*: L’entomofaune des forêts du sud de la Dobroudja. Travaux du Muséum d’Histoire Naturelle “Grigore Antipa”, 7: 119–148. (in French)
- PETRI, K. (1912) Siebenbürgens Käferfauna auf Grund ihrer Erforschung bis zum Jahre 1911. Verhandlungen und Mitteilungen des Siebenbürgischen Vereins für Naturwissenschaften zu Hermannstadt: 1–376.
- SEENO, T., J. WILCOX (1982) Leaf-Beetle Genera (Coleoptera: Chrysomelidae). Entomography Publications, Sacramento, California, 221 pp.

- SEKERKA, L. (2007) Detailed distribution of *Cassida sanguinosa* and *C. leucanthemis* (Coleoptera: Chrysomelidae: Cassidinae: Cassidini). *Acta Entomologica Musei Nationalis Pragae*, 47: 203–209.
- SEKERKA, L. (2010) *Icones Insectorum Europae Centralis*. Coleoptera: Chrysomelidae: Cassidinae. *Folia Heyrovskyana*, Serie B, 13: 1–24.
- SERAFIM, R., S. MAICAN (2004) Contributions to the knowledge of the Coleopterans from the littoral of the Black Sea (Romania). *Travaux du Muséum National d' Histoire Naturelle "Grigore Antipa"*, 47: 169–210.
- SERAFIM, R., S. MAICAN (2008) Data on Cerambycidae and Chrysomelidae (Coleoptera: Chrysomeloidea) from București and surroundings. *Travaux du Muséum National d' Histoire Naturelle "Grigore Antipa"*, 51: 387–416.
- SERAFIM, R., S. MAICAN (2011) Catalogue of Cerambycidae, Megalopodidae and Chrysomelidae (Coleoptera: Chrysomeloidea) recently entered in the patrimony of "Grigore Antipa" National Museum of Natural History (Bucharest). Igor Ceianu collection. *Travaux du Muséum National d' Histoire Naturelle "Grigore Antipa"*, 54 (2): 425–460.
- STAINES, C.L. (2002) The New World tribes and genera of hispines (Coleoptera: Chrysomelidae: Cassidinae). *Proceedings of the Entomological Society of Washington*, 104 (3): 721–784.
- ŚWIĘTOJAŃSKA, J., L. BOROWIEC, M. STACH (2014) Redescription of immatures and bionomy of the Palearctic species *Dicladispa testacea* (Linnaeus, 1767) (Coleoptera: Chrysomelidae: Cassidinae: Hispini), a leaf-mining hispine beetle. *Zootaxa*, 3811 (1): 001–033.
- UNGUREANU, V., S. MAICAN, R. SERAFIM (2008) Diversity of coleopterans: Cerambycidae, Chrysomelidae, Coccinellidae from Buzău area (Romania). *Travaux du Muséum National d' Histoire Naturelle "Grigore Antipa"*, 51: 171–183.
- WARCHAŁOWSKI, A. (2003) Chrysomelidae. The leaf beetles of Europe and the Mediterranean area. *Natura Optima dux*. Foundation, Warszawa, 600 pp.
- WARCHAŁOWSKI, A. (2010) The Palearctic Chrysomelidae. Identification keys. Volumes 1 & 2. *Natura Optima dux*. Foundation, Warszawa, 1212 pp.