

# GEOLOGY OF THE AVALON PENINSULA, NEWFOUNDLAND (parts of 1K, 1L, 1M, 1N and 2C)

**Map 88-01  
(Digital reproduction)**  
Geology compiled by A. F. King  
Map series edited by S. P. Colman-Sadd and J. P. Hayes

### ACKNOWLEDGEMENTS

Previously unpublished mapping by A. F. King benefited greatly during its early stages from the guidance of W.D. Buckner (Consulting Group), V.S. Papadakis (Parrish Main Group), and T. Fischer (Canadian Radiographic Corp., St. Mary's peninsula). Special thanks are extended to M.M. Anderson, T. Gallo, B. Cooke, J. Major, S.L. O'Brien, C.F. O'Driscoll, G. Parsons, R.K. Stevens and H. Williams for comments made in the field and for informal discussions. Capable field assistance was provided by J. H. T. Brice and D. Anderson.

1:1 Miller and J. Tod are thanked for the interpretation of geological data, and C.F. O'Driscoll for the comparison of the mineral occurrences.

The offshore geological data were provided by the Atlantic Geoscience Centre, Geological Survey of Canada, and have been published previously in a less detailed form in King et al., 1998. Special thanks are extended to G.B.J. Fisher for his assistance in compiling the data for this map.

Funding for part of the project was provided by the Canadian Underwater Centre for the study of the geology of the Avalon Peninsula, Geological Survey of Canada, and the Geological Survey of Canada, Department of Earth Sciences, Memorial University of Newfoundland, St. John's, Newfoundland A1B 3X5.

The bathymetric contours were provided by the Canadian Hydrographic Service from the Natural Resources Map series and from unpublished maps.

Geological cartography by Tony Petrucci.

**Recommended citation:**  
King, A.F., 1988. Geology of the Avalon Peninsula, Newfoundland (parts of 1K, 1L, 1M, 1N and 2C), Newfoundland Department of Mines and Energy, Map 88-01.

Centre for Earth Resources Research, Department of Earth Sciences, Memorial University of Newfoundland, St. John's, Newfoundland A1B 3X5.

The Geological Survey of Canada, Department of Mines and Energy, and its publications, retains the sole right to the original data and information located in any product produced. The authors and publishers assume no legal liability or responsibility for any alterations, changes or misrepresentations made by third parties with respect to these products, or the original data. Furthermore, the Geological Survey assumes no liability with respect to digital reproductions or copies of original products or for derivative products made by third parties. Please consult with the Geological Survey in order to ensure originality and correctness of data and/or products.

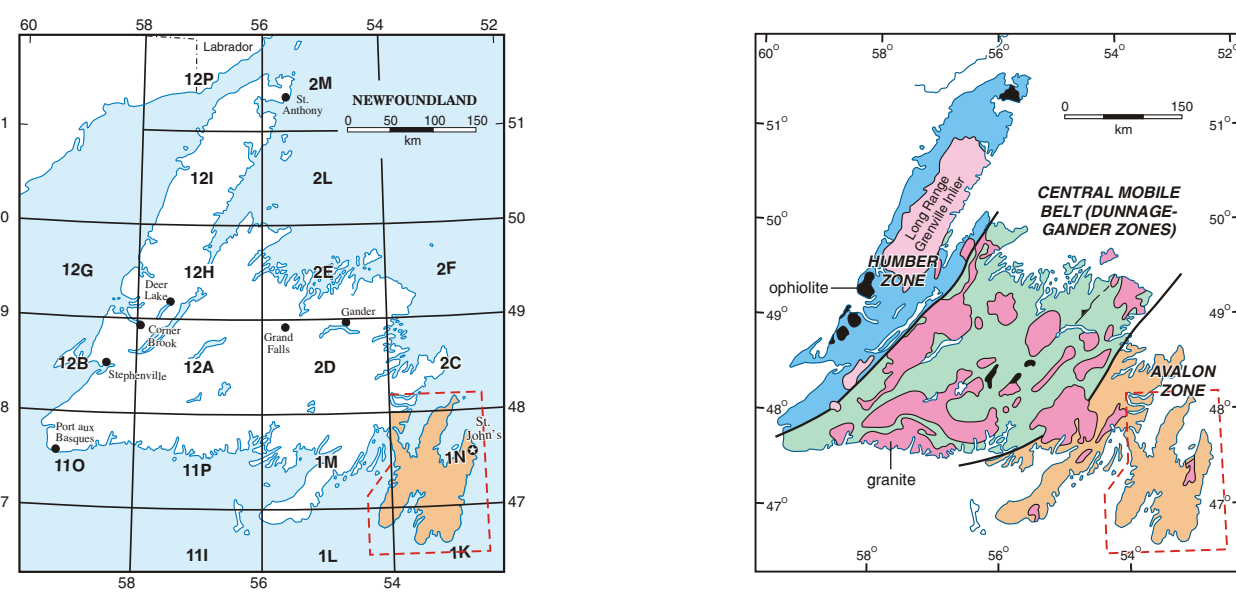
### SYMBOLS

**GENERAL**  
Geological contact (defined, approximate, assumed, gradational)  
Fault (defined, approximate, assumed, thrust)  
Belted tops known (inclined, overturned, horizontal)  
Belted tops unknown (vertical)  
Cleavage (inclined, vertical)  
Axis of minor fold (plunging)  
Fold axis (anticline, syncline, with direction of plunge)  
Uncertainty (shown on legend and stratigraphic section only)  
Fossil locality  
Problematical fossil marking

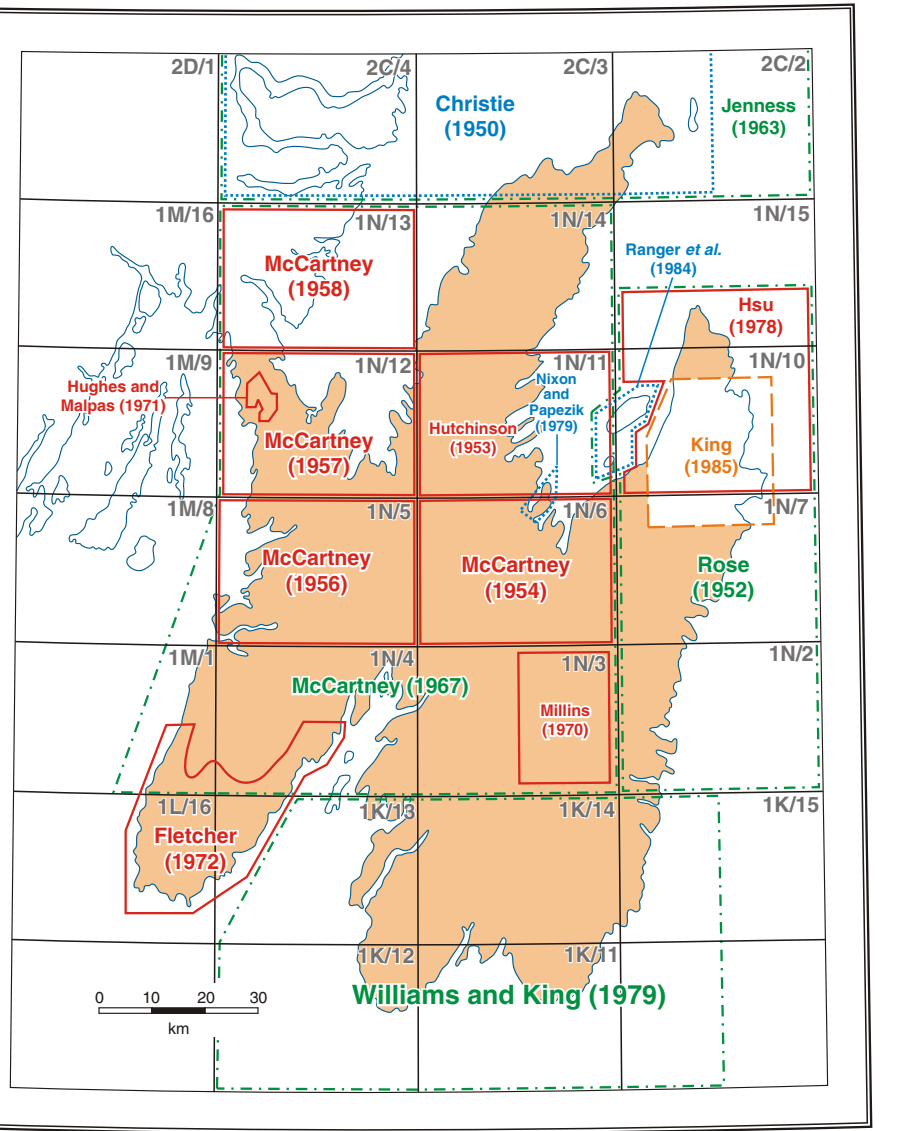
**MINERAL OCCURRENCES**  
**Status**  
Produced  
Developed prospect  
Past producer (dominant)  
Past producer (exhausted)  
Prospect  
Showing  
Indication

**Commodity**  
Au Gold  
Ba Barite  
Bt Biotite  
Clay Clay  
Cu Copper  
Dm Distamaceous  
Fe Iron  
Fluorite  
Grt Garnet  
Lst Limestone  
Mn Manganese  
Ms Muscovite  
Pb Lead  
Pyr Pyrite  
Pph Pyrophyllite  
Py Pyrite  
Sls Silica  
Stn Sulfur  
Building stone

Detailed mineral occurrence data are published separately on Map 88-02 (O'Driscoll and King, 1988)



### SOURCE MAPS FOR COMPILED



### REFERENCES

Anderson, M.L., Rowe, W.D., King, A.F. and Moore, J.B. 1973. The Avalon Peninsula, N.S., in: Newfoundland and Labrador. Newfoundland Department of Mines and Energy, Paper 15 (1973). 155 p.

Clapp, G.A. 1944. Geology of the Avalon Peninsula. Newfoundland Department of Mines and Energy, Paper 15 (1944). 155 p.

Clapp, G.A. 1945. Geology of the Avalon Peninsula. Newfoundland Department of Mines and Energy, Paper 15 (1945). 155 p.

Clapp, G.A. 1946. Geology of the Avalon Peninsula. Newfoundland Department of Mines and Energy, Paper 15 (1946). 155 p.

Clapp, G.A. 1947. Geology of the Avalon Peninsula. Newfoundland Department of Mines and Energy, Paper 15 (1947). 155 p.

Clapp, G.A. 1948. Geology of the Avalon Peninsula. Newfoundland Department of Mines and Energy, Paper 15 (1948). 155 p.

Clapp, G.A. 1949. Geology of the Avalon Peninsula. Newfoundland Department of Mines and Energy, Paper 15 (1949). 155 p.

Clapp, G.A. 1950. Geology of the Avalon Peninsula. Newfoundland Department of Mines and Energy, Paper 15 (1950). 155 p.

Clapp, G.A. 1951. Geology of the Avalon Peninsula. Newfoundland Department of Mines and Energy, Paper 15 (1951). 155 p.

Clapp, G.A. 1952. Geology of the Avalon Peninsula. Newfoundland Department of Mines and Energy, Paper 15 (1952). 155 p.

Clapp, G.A. 1953. Geology of the Avalon Peninsula. Newfoundland Department of Mines and Energy, Paper 15 (1953). 155 p.

Clapp, G.A. 1954. Geology of the Avalon Peninsula. Newfoundland Department of Mines and Energy, Paper 15 (1954). 155 p.

Clapp, G.A. 1955. Geology of the Avalon Peninsula. Newfoundland Department of Mines and Energy, Paper 15 (1955). 155 p.

Clapp, G.A. 1956. Geology of the Avalon Peninsula. Newfoundland Department of Mines and Energy, Paper 15 (1956). 155 p.

Clapp, G.A. 1957. Geology of the Avalon Peninsula. Newfoundland Department of Mines and Energy, Paper 15 (1957). 155 p.

Clapp, G.A. 1958. Geology of the Avalon Peninsula. Newfoundland Department of Mines and Energy, Paper 15 (1958). 155 p.

Clapp, G.A. 1959. Geology of the Avalon Peninsula. Newfoundland Department of Mines and Energy, Paper 15 (1959). 155 p.

Clapp, G.A. 1960. Geology of the Avalon Peninsula. Newfoundland Department of Mines and Energy, Paper 15 (1960). 155 p.

Clapp, G.A. 1961. Geology of the Avalon Peninsula. Newfoundland Department of Mines and Energy, Paper 15 (1961). 155 p.

Clapp, G.A. 1962. Geology of the Avalon Peninsula. Newfoundland Department of Mines and Energy, Paper 15 (1962). 155 p.

Clapp, G.A. 1963. Geology of the Avalon Peninsula. Newfoundland Department of Mines and Energy, Paper 15 (1963). 155 p.

Clapp, G.A. 1964. Geology of the Avalon Peninsula. Newfoundland Department of Mines and Energy, Paper 15 (1964). 155 p.

Clapp, G.A. 1965. Geology of the Avalon Peninsula. Newfoundland Department of Mines and Energy, Paper 15 (1965). 155 p.

Clapp, G.A. 1966. Geology of the Avalon Peninsula. Newfoundland Department of Mines and Energy, Paper 15 (1966). 155 p.

Clapp, G.A. 1967. Geology of the Avalon Peninsula. Newfoundland Department of Mines and Energy, Paper 15 (1967). 155 p.

Clapp, G.A. 1968. Geology of the Avalon Peninsula. Newfoundland Department of Mines and Energy, Paper 15 (1968). 155 p.

Clapp, G.A. 1969. Geology of the Avalon Peninsula. Newfoundland Department of Mines and Energy, Paper 15 (1969). 155 p.

Clapp, G.A. 1970. Geology of the Avalon Peninsula. Newfoundland Department of Mines and Energy, Paper 15 (1970). 155 p.

Clapp, G.A. 1971. Geology of the Avalon Peninsula. Newfoundland Department of Mines and Energy, Paper 15 (1971). 155 p.

Clapp, G.A. 1972. Geology of the Avalon Peninsula. Newfoundland Department of Mines and Energy, Paper 15 (1972). 155 p.

Clapp, G.A. 1973. Geology of the Avalon Peninsula. Newfoundland Department of Mines and Energy, Paper 15 (1973). 155 p.

Clapp, G.A. 1974. Geology of the Avalon Peninsula. Newfoundland Department of Mines and Energy, Paper 15 (1974). 155 p.

Clapp, G.A. 1975. Geology of the Avalon Peninsula. Newfoundland Department of Mines and Energy, Paper 15 (1975). 155 p.

Clapp, G.A. 1976. Geology of the Avalon Peninsula. Newfoundland Department of Mines and Energy, Paper 15 (1976). 155 p.

Clapp, G.A. 1977. Geology of the Avalon Peninsula. Newfoundland Department of Mines and Energy, Paper 15 (1977). 155 p.

Clapp, G.A. 1978. Geology of the Avalon Peninsula. Newfoundland Department of Mines and Energy, Paper 15 (1978). 155 p.

Clapp, G.A. 1979. Geology of the Avalon Peninsula. Newfoundland Department of Mines and Energy, Paper 15 (1979). 155 p.

Clapp, G.A. 1980. Geology of the Avalon Peninsula. Newfoundland Department of Mines and Energy, Paper 15 (1980). 155 p.

Clapp, G.A. 1981. Geology of the Avalon Peninsula. Newfoundland Department of Mines and Energy, Paper 15 (1981). 155 p.

Clapp, G.A. 1982. Geology of the Avalon Peninsula. Newfoundland Department of Mines and Energy, Paper 15 (1982). 155 p.

Clapp, G.A. 1983. Geology of the Avalon Peninsula. Newfoundland Department of Mines and Energy, Paper 15 (1983). 155 p.

Clapp, G.A. 1984. Geology of the Avalon Peninsula. Newfoundland Department of Mines and Energy, Paper 15 (1984). 155 p.

Clapp, G.A. 1985. Geology of the Avalon Peninsula. Newfoundland Department of Mines and Energy, Paper 15 (1985). 155 p.

Clapp, G.A. 1986. Geology of the Avalon Peninsula. Newfoundland Department of Mines and Energy, Paper 15 (1986). 155 p.

Clapp, G.A. 1987. Geology of the Avalon Peninsula. Newfoundland Department of Mines and Energy, Paper 15 (1987). 155 p.

Clapp, G.A. 1988. Geology of the Avalon Peninsula. Newfoundland Department of Mines and Energy, Paper 15 (1988). 155 p.

Clapp, G.A. 1989. Geology of the Avalon Peninsula. Newfoundland Department of Mines and Energy, Paper 15 (1989). 155 p.

Clapp, G.A. 1990. Geology of the Avalon Peninsula. Newfoundland Department of Mines and Energy, Paper 15 (1990). 155 p.

Clapp, G.A. 1991. Geology of the Avalon Peninsula. Newfoundland Department of Mines and Energy, Paper 15 (1991). 155 p.

Clapp, G.A. 1992. Geology of the Avalon Peninsula. Newfoundland Department of Mines and Energy, Paper 15 (1992). 155 p.

Clapp, G.A. 1993. Geology of the Avalon Peninsula. Newfoundland Department of Mines and Energy, Paper 15 (1993). 155 p.

Clapp, G.A. 1994. Geology of the Avalon Peninsula. Newfoundland Department of Mines and Energy, Paper 15 (1994). 155 p.

Clapp, G.A. 1995. Geology of the Avalon Peninsula. Newfoundland Department of Mines and Energy, Paper 15 (1995). 155 p.

Clapp, G.A. 1996. Geology of the Avalon Peninsula. Newfoundland Department of Mines and Energy, Paper 15 (1996). 155 p.

Clapp, G.A. 1997. Geology of the Avalon Peninsula. Newfoundland Department of Mines and Energy, Paper 15 (1997). 155 p.

Clapp, G.A. 1998. Geology of the Avalon Peninsula. Newfoundland Department of Mines and Energy, Paper 15 (1998). 155 p.

Clapp, G.A. 1999. Geology of the Avalon Peninsula. Newfoundland Department of Mines and Energy, Paper 15 (1999). 155 p.

Clapp, G.A. 2000. Geology of the Avalon Peninsula. Newfoundland Department of Mines and Energy, Paper 15 (2000). 155 p.

Clapp, G.A. 2001. Geology of the Avalon Peninsula. Newfoundland Department of Mines and Energy, Paper 15 (2001). 155 p.

Clapp, G.A. 2002. Geology of the Avalon Peninsula. Newfoundland Department of Mines and Energy, Paper 15 (2002). 155 p.

Clapp, G.A. 2003. Geology of the Avalon Peninsula. Newfoundland Department of Mines and Energy, Paper 15 (2003). 155 p.

Clapp, G.A. 2004. Geology of the Avalon Peninsula. Newfoundland Department of Mines and Energy, Paper 15 (2004). 155 p.

Clapp, G.A. 2005. Geology of the Avalon Peninsula. Newfoundland Department of Mines and Energy, Paper 15 (2005). 155 p.

Clapp, G.A. 2006. Geology of the Avalon Peninsula. Newfoundland Department of Mines and Energy, Paper 15 (2006). 155 p.

Clapp, G.A. 2007. Geology of the Avalon Peninsula. Newfoundland Department of Mines and Energy, Paper 15 (2007). 155 p.

Clapp, G.A. 2008. Geology of the Avalon Peninsula. Newfoundland Department of Mines and Energy, Paper 15 (2008). 155 p.

Clapp, G.A. 2009. Geology of the Avalon Peninsula. Newfoundland Department of Mines and Energy, Paper 15 (2009). 155 p.

Clapp, G.A. 2010. Geology of the Avalon Peninsula. Newfoundland Department of Mines and Energy, Paper 15 (2010). 155 p.

Clapp, G.A. 2011. Geology of the Avalon Peninsula. Newfoundland Department of Mines and Energy, Paper 15 (2011). 155 p.

Clapp, G.A. 2012. Geology of the Avalon Peninsula. Newfoundland Department of Mines and Energy, Paper 15 (2012). 155 p.

Clapp, G.A. 2013. Geology of the Avalon Peninsula. Newfoundland Department of Mines and Energy, Paper 15 (2013). 155 p.

Clapp, G.A. 2014. Geology of the Avalon Peninsula. Newfoundland Department of Mines and Energy, Paper 15 (2014). 155 p.

Clapp, G.A. 2015. Geology of the Avalon Peninsula. Newfoundland Department of Mines and Energy, Paper 15 (2015). 155 p.

Clapp, G.A. 2016. Geology of the Avalon Peninsula. Newfoundland Department of Mines and Energy, Paper 15 (2016). 155 p.

Clapp, G.A. 2017. Geology of the Avalon Peninsula. Newfoundland Department of Mines and Energy, Paper 15 (2017). 155 p.

Clapp, G.A. 2018. Geology of the Avalon Peninsula. Newfoundland Department of Mines and Energy, Paper 15 (2018). 155 p.

Clapp, G.A. 2019. Geology of the Avalon Peninsula. Newfoundland Department of Mines and Energy, Paper 15 (2019). 155 p.

Clapp, G.A. 2020. Geology of the Avalon Peninsula. Newfoundland Department of Mines and Energy, Paper 15 (2020). 155 p.

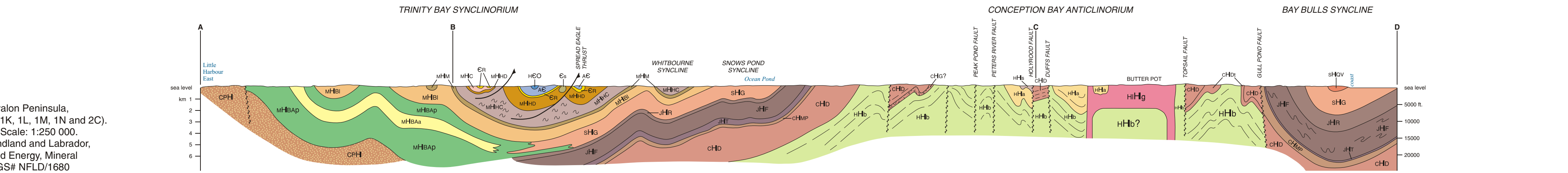
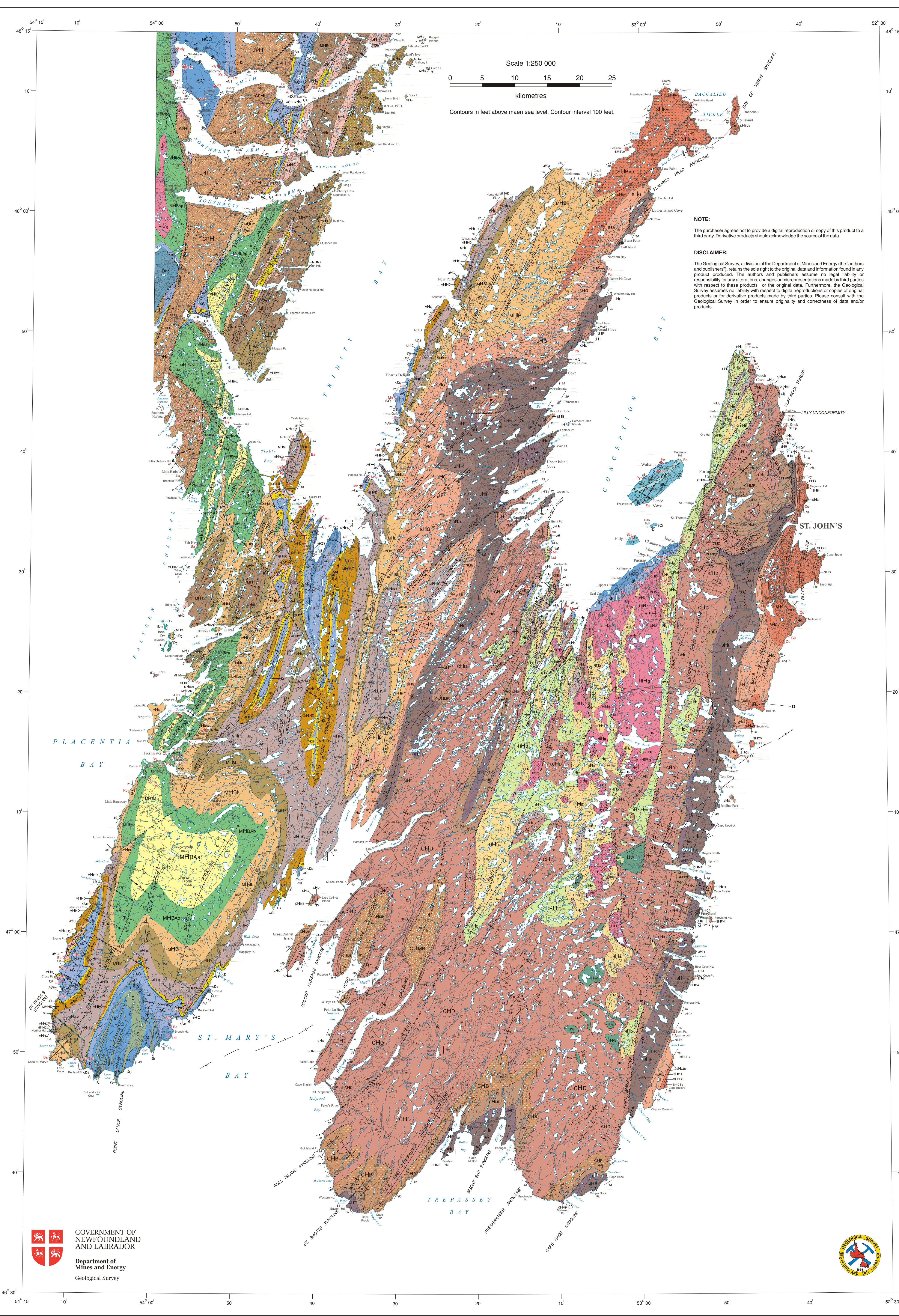
Clapp, G.A. 2021. Geology of the Avalon Peninsula. Newfoundland Department of Mines and Energy, Paper 15 (2021). 155 p.

Clapp, G.A. 2022. Geology of the Avalon Peninsula. Newfoundland Department of Mines and Energy, Paper 15 (2022). 155 p.

Clapp, G.A. 2023. Geology of the Avalon Peninsula. Newfoundland Department of Mines and Energy, Paper 15 (2023). 155 p.

Clapp, G.A. 2024. Geology of the Avalon Peninsula. Newfoundland Department of Mines and Energy, Paper 15 (2024). 155 p.

Clapp, G.A. 2025. Geology of the Avalon Peninsula. Newfoundland Department of Mines and Energy, Paper 15 (2025). 155 p.



**Legend for Simplified Map:**  
Paleozoic  
Magnum Group (including Bull Arm Formation)  
Bel Arm Formation  
Conception and Connecting Point Group  
Harbour Main Group  
Miocene Intrusions  
Signal Hill and St. John's Groups

### LEGEND

**Lower Cambrian**  
C1: Green, gray and black shale, siliceous siltstone and sandstone; minor green conglomerate; numerous small, clear and dark chert nodules.  
C2: Dark gray to black shale, siliceous siltstone and sandstone; minor green conglomerate; numerous small, clear and dark chert nodules.  
C3: Dark gray to black shale, siliceous siltstone and sandstone; minor green conglomerate; numerous small, clear and dark chert nodules.  
C4: Dark gray to black shale, siliceous siltstone and sandstone; minor green conglomerate; numerous small, clear and dark chert nodules.  
C5: Dark gray to black shale, siliceous siltstone and sandstone; minor green conglomerate; numerous small, clear and dark chert nodules.  
C6: Dark gray to black shale, siliceous siltstone and sandstone; minor green conglomerate; numerous small, clear and dark chert nodules.  
C7: Dark gray to black shale, siliceous siltstone and sandstone; minor green conglomerate; numerous small, clear and dark chert nodules.  
C8: Dark gray to black shale, siliceous siltstone and sandstone; minor green conglomerate; numerous small, clear and dark chert nodules.  
C9: Dark gray to black shale, siliceous siltstone and sandstone; minor green conglomerate; numerous small, clear and dark chert nodules.  
C10: Dark gray to black shale, siliceous siltstone and sandstone; minor green conglomerate; numerous small, clear and dark chert nodules.

**Upper Cambrian**  
Harcourt Group (HCO)  
Adeyton Group (AG)  
C11: Dark gray to black shale, siliceous siltstone and sandstone; minor green conglomerate; numerous small, clear and dark chert nodules.  
C12: Dark gray to black shale, siliceous siltstone and sandstone; minor green conglomerate; numerous small, clear and dark chert nodules.  
C13: Dark gray to black shale, siliceous siltstone and sandstone; minor green conglomerate; numerous small, clear and dark chert nodules.  
C14: Dark gray to black shale, siliceous siltstone and sandstone; minor green conglomerate; numerous small, clear and dark chert nodules.  
C15: Dark gray to black shale, siliceous siltstone and sandstone; minor green conglomerate; numerous small, clear and dark chert nodules.  
C16: Dark gray to black shale, siliceous siltstone and sandstone; minor green conglomerate; numerous small, clear and dark chert nodules.  
C17: Dark gray to black shale, siliceous siltstone and sandstone; minor green conglomerate; numerous small, clear and dark chert nodules.  
C18: Dark gray to black shale, siliceous siltstone and sandstone; minor green conglomerate; numerous small, clear and dark chert nodules.  
C19: Dark gray to black shale, siliceous siltstone and sandstone; minor green conglomerate; numerous small, clear and dark chert nodules.  
C20: Dark gray to black shale, siliceous siltstone and sandstone; minor green conglomerate; numerous small, clear and dark chert nodules.

### Diagram of Major Stratigraphic Relationships

### Diagram of Major Stratigraphic Relationships (continued)

### Diagram of Major Stratigraphic Relationships (continued)

**King, A.F. (compiler)**  
1988. Geology of the Avalon Peninsula, Newfoundland (parts of 1K, 1L, 1M, 1N and 2C), Map 88-01 (coloured), Scale 1:250 000, Government of Newfoundland and Labrador, Department of Mines and Energy, Mineral Development Division, GSN F2L181800

**REFERENCES**  
Anderson, M.L., Rowe, W.D., King, A.F. and Moore, J.B. 1973. The Avalon Peninsula, N.S., in: Newfoundland and Labrador. Newfoundland Department of Mines and Energy, Paper 15 (1973). 155 p.