



Climate normals Säntis

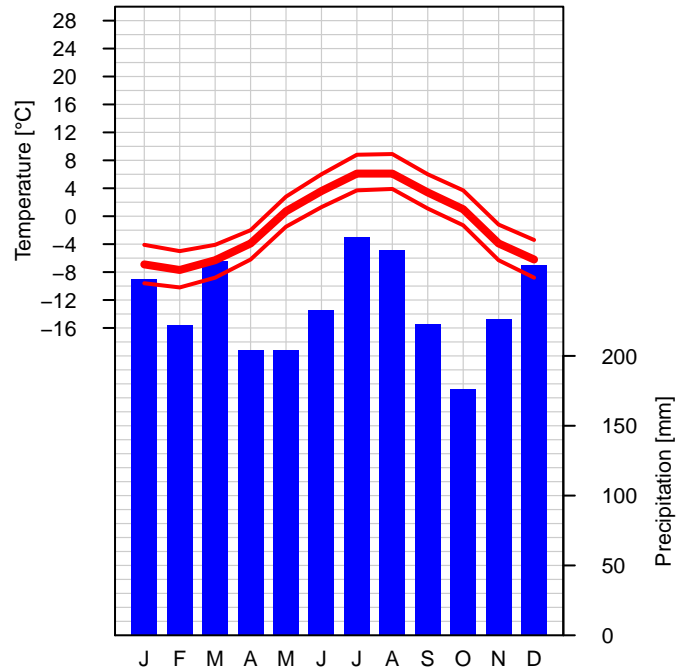
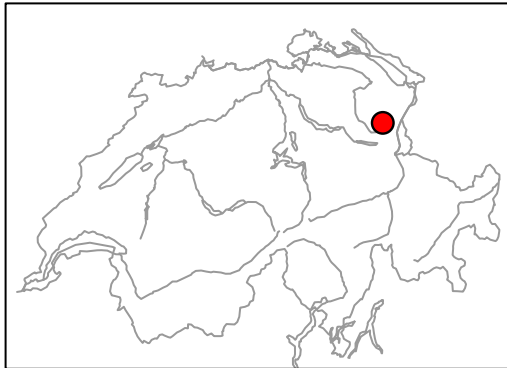
Reference period 1981–2010

Altitude a.s.l.: 2502 m

Geogr. coord.: 47.25 N / 9.34 E

Swiss coord.: 744184 / 234918

Climate region: Eastern Alpine north slope



	Jan	Feb	Mar	Apr	May	Jun	Jul	Aug	Sep	Oct	Nov	Dec	Year	Period
Temperature [°C]	-6.9	-7.7	-6.3	-3.9	0.7	3.6	6.1	6.1	3.4	1.0	-3.9	-6.2	-1.2	1981–2010
Maximum temp [°C]	-4.1	-5.0	-4.1	-2.0	2.8	6.0	8.8	8.9	6.0	3.7	-1.2	-3.4	1.4	1981–2010
Minimum temp [°C]	-9.6	-10.2	-8.8	-6.2	-1.5	1.3	3.7	3.9	1.1	-1.3	-6.3	-8.8	-3.6	1981–2010
Ice days [days]	26.1	23.8	24.5	19.7	7.7	4.1	0.8	0.8	3.2	6.2	17.1	23.5	157.5	1981–2010
Frost days [days]	30.7	27.9	30.5	27.8	19.5	12.3	5.8	4.8	11.8	17.7	26.8	30.4	246.0	1981–2010
Summer days [days]	0.0	0.0	0.0	0.0	0.0	0.0	0.0	0.0	0.0	0.0	0.0	0.0	0.0	1981–2010
Heat days [days]	0.0	0.0	0.0	0.0	0.0	0.0	0.0	0.0	0.0	0.0	0.0	0.0	0.0	1981–2010
Relative humidity [%]	65	68	75	80	82	84	83	82	78	70	70	68	75	1981–2010
Precipitation [mm]	255	222	268	204	204	233	285	276	223	176	226	265	2837	1981–2010
Precipitation [days]	12.7	11.9	15.7	14.1	15.2	16.3	16.3	16.0	13.2	11.1	12.8	14.5	169.8	1981–2010
Snowfall [cm]	147.8	154.0	164.3	116.9	61.5	43.8	18.0	16.6	43.0	60.5	131.3	156.8	1114.5	1981–2010
Snowfall [days]	14.8	13.5	16.9	14.8	9.6	6.4	2.6	2.0	5.7	8.4	12.9	15.8	123.4	1981–2010
Snow cover [days]	31.0	28.2	31.0	30.0	31.0	29.8	22.3	7.1	11.2	19.5	28.7	31.0	300.8	1981–2010
Sunshine [h]	135	138	149	151	167	155	176	169	161	169	125	115	1809	1981–2010
Sunshine [%]	49	48	41	38	37	34	38	40	44	50	45	44	41	1981–2010
Bright days [days]	11.1	9.8	8.1	5.5	3.9	2.4	3.3	5.4	7.8	10.4	9.0	9.8	86.5	1981–2010
Cloudy days [days]	12.4	11.6	14.4	13.4	13.6	14.1	12.9	12.3	12.1	11.0	12.6	14.1	154.5	1981–2010



Climate normals Säntis

Reference period 1981–2010

Legend:

Climate graph:	Graph showing long–term means of monthly mean temperature, mean monthly maximum and minimum temperature as well as monthly precipitation sums of a certain measuring site.
Table:	Long–term means of monthly mean values and monthly sums of different climatological parameters. Missing values (no measurements or measuring period shorter than 10 years) are labeled as "–".
Temperature [°C]	monthly mean temperature
Maximum temp [°C]	monthly mean of daily maximum temperature
Minimum temp [°C]	monthly mean of daily minimum temperature
Ice days [days]	number of days with maximum temperature below 0° Celsius
Frost days [days]	number of days with minimum temperature below 0° Celsius
Summer days [days]	number of days with maximum temperature equal to or above 25° Celsius
Heat days [days]	number of days with maximum temperature equal to or above 30° Celsius
<i>Relative humidity [%]</i>	monthly mean of relative humidity
Precipitation [mm]	monthly precipitation sum
Precipitation [days]	number of days with precipitation equal to or above 1 mm
<i>Snowfall [cm]</i>	monthly snowfall sum
<i>Snowfall [days]</i>	number of days with snowfall equal to or above 1 cm
<i>Snow cover [days]</i>	number of days with snow cover equal to or above 1 cm
Sunshine [h]	measured sunshine duration
Sunshine [%]	ratio of measured sunshine duration to possible sunshine duration
<i>Bright days [days]</i>	number of days with sunshine duration greater than 80%
<i>Cloudy days [days]</i>	number of days with sunshine duration less than 20%
Period:	First and last year of analysed period. Possible gaps in the data series are not separately mentioned.

Homogeneous data series were used to calculate long–term means except for parameters shown in italics. The values can change due to continuous quality control and homogeneity updates. Further information on the Swiss climate and on the homogenization topic can be found on www.meteoswiss.ch.