



**India Meteorological Department
Earth System Science Organisation
(Ministry of Earth Sciences)**

BULLETIN NO. : 05 (BOB/10/2018)

TIME OF ISSUE: 0115 HOURS IST

DATED: 14.12.2018

FROM: INDIA METEOROLOGICAL DEPARTMENT (FAX NO. 24643965/24699216/24623220)

TO: CONTROL ROOM, NDM, MINISTRY OF HOME AFFAIRS (FAX.NO. 23093750)

CONTROL ROOM NDMA (FAX.NO. 26701729)

CABINET SECRETARIAT (FAX.NO.23012284, 23018638)

PS TO HON'BLE MINISTER FOR S & T AND EARTH SCIENCES (FAX NO.23316745)

SECRETARY, MOES, (FAX NO. 24629777)

H.Q. (INTEGRATED DEFENCE STAFF AND CDS) (FAX NO. 23005137/23005147)

DIRECTOR GENERAL, DOORDARSHAN (23385843)

DIRECTOR GENERAL, AIR (23421105, 23421219)

PIB MOES (FAX NO. 23389042)

UNI (FAX NO. 23355841)

D.G. NATIONAL DISASTER RESPONSE FORCE (NDRF) (FAX NO. 26105912)

DIRECTOR, PUNCTUALITY, INDIAN RAILWAYS (FAX NO. 23388503)

CHIEF SECRETARY, GOVT. OF ODISHA (FAX NO. 0674 -2536660)

CHIEF SECRETARY, ANDHRA PRADESH (FAX NO. 0863-2441029)

CHIEF SECRETARY, TAMIL NADU (FAX NO. 044-25672304)

CHIEF SECRETARY, ANDAMAN & NICOBAR ISLANDS (FAX NO. 03192- 232656)

CHIEF SECRETARY, WEST BENGAL (FAX NO. 033-22144328)

CHIEF SECRETARY, PUDUCHERRY (FAX NO. 0413-2337575)

Sub: Depression intensified into Deep Depression over southeast Bay of Bengal: Pre-cyclone watch for Andhra Pradesh Coast

The depression over southeast Bay of Bengal moved north-northwestwards with a speed of 07 kmph during past 06 hours, intensified into a deep depression and lay centred at 2330 hrs IST of 13th December, 2018 over southeast Bay of Bengal near latitude 7.6°N and longitude 88.0°E, about 750 km east-southeast of Trincomalee (Sri Lanka), 1040 km south-southeast of Chennai (Tamil Nadu) and 1210 km south-southeast of Machilipatnam (Andhra Pradesh). It is very likely to intensify further into a Cyclonic Storm during next 24 hours and into a severe cyclonic storm in subsequent 24 hours. It is very likely to move northwestwards towards Andhra Pradesh coast during next 72 hours. Forecast track and intensity are given in the following table:

Date/Time(IST)	Position (Lat. °N/ long. °E)	Maximum sustained surface wind speed (Kmph)	Category of cyclonic disturbance
13.12.18/2330	7.6/88.0	50-60 gusting to 70	Deep Depression
14.12.18/0530	8.1/87.2	55-65 gusting to 75	Deep Depression
14.12.18/1130	8.5/86.5	60-70 gusting to 80	Cyclonic Storm
14.12.18/1730	9.0/85.7	65-75 gusting to 85	Cyclonic Storm
14.12.18/2330	9.5/85.0	70-80 gusting to 90	Cyclonic Storm
15.12.18/1130	10.7/84.1	75-85 gusting to 95	Cyclonic Storm
15.12.18/2330	12.1/83.1	90-100 gusting to 110	Severe Cyclonic Storm
16.12.18/1130	13.5/82.2	95-105 gusting to 115	Severe Cyclonic Storm
16.12.18/2330	14.9/81.3	90-100 gusting to 110	Severe Cyclonic Storm

Warnings:

(i) Heavy rainfall warning

- Rainfall at most places with heavy to very heavy falls at isolated places likely to commence over coastal Andhra Pradesh and north coastal Tamil Nadu on 15th December.

Spatial rainfall distribution: Isolated: <25%, A few: 26-50%, Many: 51-75%, Most: 76-100%

Rainfall amount (mm): Heavy rain: 64.5 – 115.5, Very heavy rain: 115.6 – 204.4, Extremely heavy rain: 204.5 or more.

- Rainfall at most places with heavy to very heavy falls at a few places and extremely heavy falls (≥ 20 cm) at isolated places likely over coastal Andhra Pradesh on 16th December and isolated heavy falls on 17th.

(ii) Wind warning

- **14th December:** Gale wind speed reaching 65-75 kmph gusting to 85 kmph is very likely over southwest & adjoining southeast Bay of Bengal.
- **15th December:**
 - Squally wind speed reaching 45-55 kmph gusting to 65 kmph is likely to commence along & off Coastal Andhra Pradesh and north Tamilnadu & Puducherry coasts from morning.
 - Gale wind speed reaching 90-100 kmph gusting to 110 kmph is likely to prevail over southwest & adjoining westcentral Bay of Bengal.
- **16th December:**
 - Gale wind speed reaching 60-70 kmph gusting to 80 kmph is likely to prevail along & off Andhra Pradesh coast from morning and will increase gradually thereafter. Squally wind speed reaching 45-55 kmph gusting to 65 kmph over north Tamil Nadu & Puducherry coast.
 - Gale wind speed reaching 100-110 kmph gusting to 120 kmph is likely to prevail over westcentral & adjoining southwest Bay of Bengal.

(iii) Sea condition

The sea condition is very likely to be high over southwest & adjoining southeast Bay of Bengal on 14th. The sea condition is very likely to be high to very high over southwest & adjoining westcentral Bay of Bengal on 15th and over westcentral & adjoining southwest Bay of Bengal on 16th.

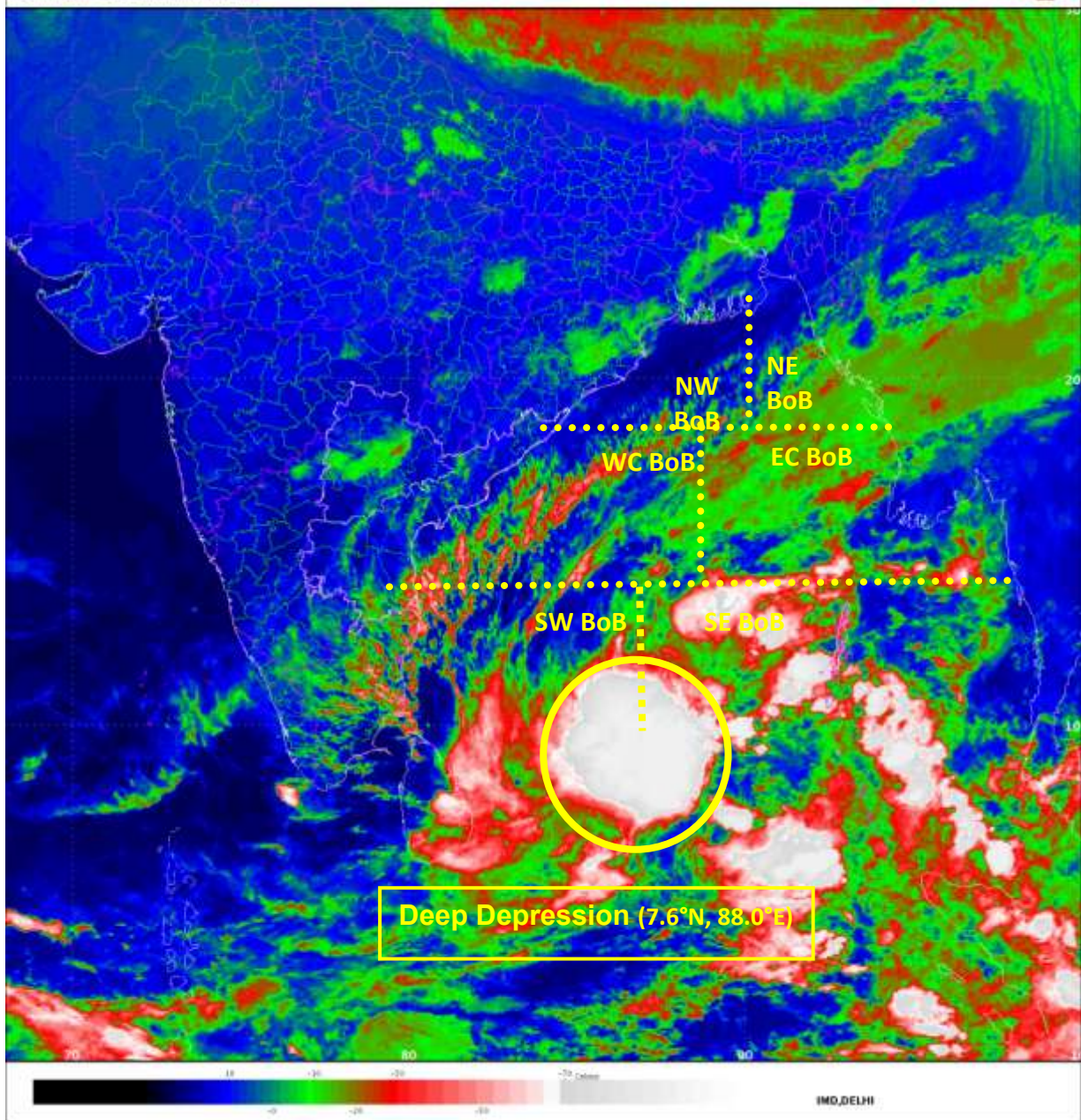
(iv) Fishermen Warning

- The fishermen are advised not to venture into southwest & adjoining southeast Bay of Bengal on 14th, into southwest & adjoining westcentral Bay of Bengal on 15th and westcentral & adjoining southwest Bay of Bengal on 16th December.
- Those, who are out in deep sea areas are advised to return to the coast.

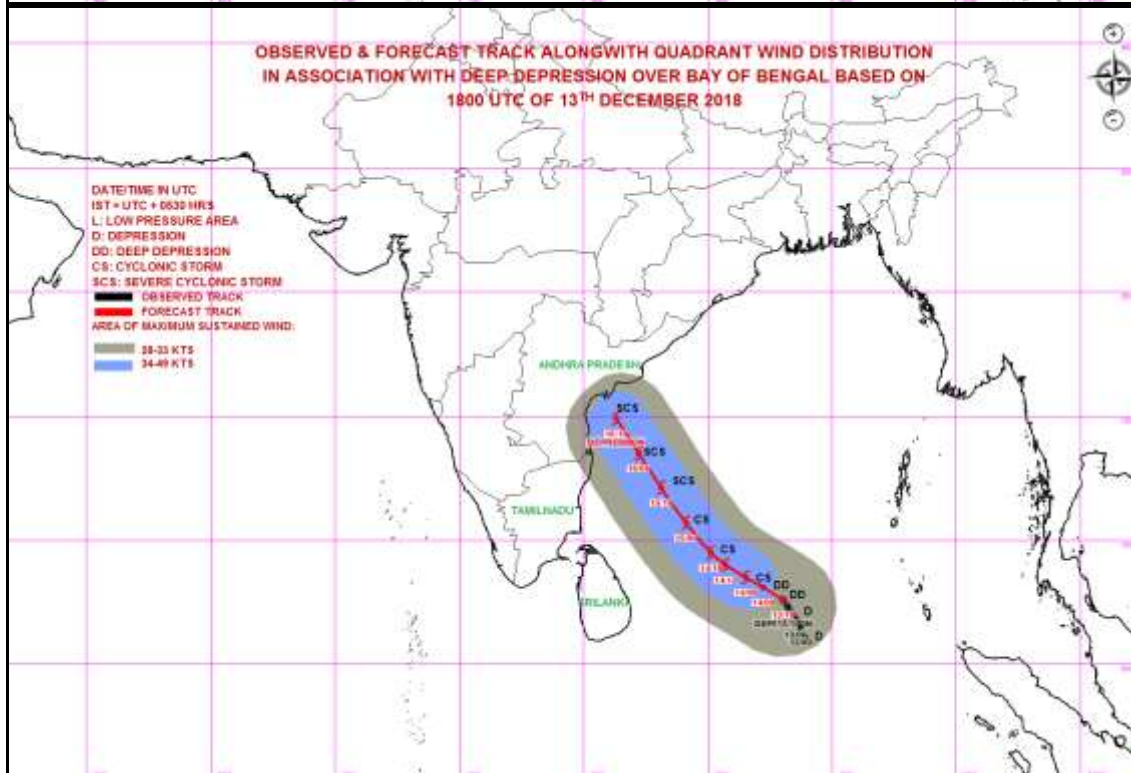
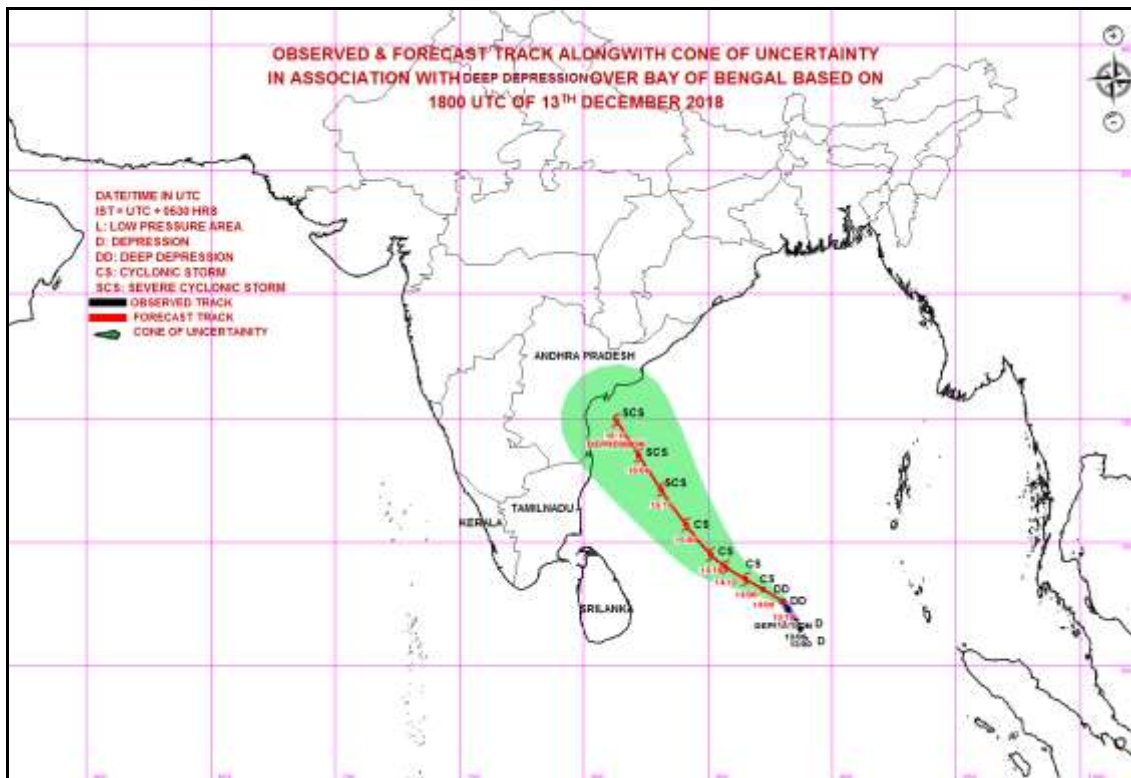
The next bulletin will be issued at 0830 hrs IST of 14th December, 2018.

(D. R. Pattanaik)
Scientist-E, RSMC, New Delhi

Copy to: CRS, Pune/ ACWC Kolkata/ Chennai/ CWC Bhubaneswar/CWC Visakhapatnam



Spatial rainfall distribution: Isolated: <25%, A few: 26-50%, Many: 51-75%, Most: 76-100%
Rainfall amount (mm): Heavy rain: 64.5 – 115.5, Very heavy rain: 115.6 – 204.4, Extremely heavy rain: 204.5 or more.



Spatial rainfall distribution: Isolated: <25%, A few: 26-50%, Many: 51-75%, Most: 76-100%
Rainfall amount (mm): Heavy rain: 64.5 – 115.5, Very heavy rain: 115.6 – 204.4, Extremely heavy rain: 204.5 or more.