



**India Meteorological Department  
Earth System Science Organisation  
(Ministry of Earth Sciences)**

**BULLETIN NO. : 05 (BOB/09/2018)**

**TIME OF ISSUE: 0830 HOURS IST**

**DATED: 11.11.2018**

**FROM: INDIA METEOROLOGICAL DEPARTMENT (FAX NO. 24643965/24699216/24623220)**

**TO: CONTROL ROOM, NDM, MINISTRY OF HOME AFFAIRS (FAX.NO. 23093750)**

**CONTROL ROOM NDMA (FAX.NO. 26701729)**

**CABINET SECRETARIAT (FAX.NO.23012284, 23018638)**

**PS TO HON'BLE MINISTER FOR S & T AND EARTH SCIENCES (FAX NO.23316745)**

**SECRETARY, MOES, (FAX NO. 24629777)**

**H.Q. (INTEGRATED DEFENCE STAFF AND CDS) (FAX NO. 23005137/23005147)**

**DIRECTOR GENERAL, DOORDARSHAN (23385843)**

**DIRECTOR GENERAL, AIR (23421105, 23421219)**

**PIB MOES (FAX NO. 23389042)**

**UNI (FAX NO. 23355841)**

**D.G. NATIONAL DISASTER RESPONSE FORCE (NDRF) (FAX NO. 26105912)**

**DIRECTOR, PUNCTUALITY, INDIAN RAILWAYS (FAX NO. 23388503)**

**CHIEF SECRETARY, GOVT. OF ODISHA (FAX NO. 0674 -2536660)**

**CHIEF SECRETARY, ANDHRA PRADESH (FAX NO. 0866-2441029)**

**CHIEF SECRETARY, TAMIL NADU (FAX NO. 044-25672304)**

**CHIEF SECRETARY, ANDAMAN & NICOBAR ISLANDS (FAX NO. 03192- 232656)**

**CHIEF SECRETARY, WEST BENGAL (FAX NO. 033-22144328)**

**CHIEF SECRETARY, PUDUCHERRY (FAX NO. 0413-2337575)**

**Sub: Deep Depression over Southeast & adjoining Central Bay of Bengal intensified into a Cyclonic storm 'Gaja' over Eastcentral and adjoining Westcentral & Southeast Bay of Bengal**

The deep depression over Southeast & adjoining Central Bay of Bengal moved west-northwestwards with a speed of 12 kmph during past 06 hours, intensified into a Cyclonic storm 'Gaja' and lay centred at 0530 hrs IST of today, the 11<sup>th</sup> November, 2018 over Eastcentral and adjoining Westcentral & Southeast Bay of Bengal near latitude 13.4°N and longitude 89.3°E, about 400 km west-northwest of Port Blair (Andaman Islands), 990 km northeast of Chennai (Tamil Nadu) and 1050 km east-southeast of Nellore (Andhra Pradesh). It is very likely to intensify further into a Severe Cyclonic Storm during next 24 hours. It is very likely to move west-northwestwards during next 36 hours and then west-southwestwards towards north Tamil Nadu – south Andhra Pradesh coasts during the subsequent 48 hours. However, while moving west-southwestwards it is also likely to weaken gradually and cross north Tamil Nadu – south Andhra Pradesh coasts as a Cyclonic Storm during 15<sup>th</sup> November forenoon.

Forecast track and intensity are given in the following table:

<b>Date/Time(IST)</b>	<b>Position (Lat. °N/ long. °E)</b>	<b>Maximum sustained surface wind speed (Kmph)</b>	<b>Category of cyclonic disturbance</b>
11.11.18/0530	13.4/89.3	60-70 gusting to 80	Cyclonic Storm
11.11.18/1130	13.6/88.7	65-75 gusting to 85	Cyclonic Storm
11.11.18/1730	13.8/88.2	70-80 gusting to 90	Cyclonic Storm
11.11.18/2330	14.0/87.7	80-90 gusting to 100	Cyclonic Storm
12.11.18/0530	14.2/87.3	90-100 gusting to 110	Severe Cyclonic Storm
12.11.18/1730	14.5/86.5	95-105 gusting to 115	Severe Cyclonic Storm
13.11.18/0530	14.5/85.7	100-110 gusting to 120	Severe Cyclonic Storm
13.11.18/1730	14.4/84.9	100-110 gusting to 120	Severe Cyclonic Storm
14.11.18/0530	14.1/84.0	90-100 gusting to 110	Severe Cyclonic Storm
14.11.18/1730	13.7/82.7	80-90 gusting to 100	Severe Cyclonic Storm
15.11.18/0530	13.2/81.2	70-80 gusting to 90	Cyclonic Storm
15.11.18/1730	12.6/79.5	50-60 gusting to 70	Deep Depression

**Spatial rainfall distribution: Isolated: <25%, A few: 26-50%, Many: 51-75%, Most: 76-100%**

**Rainfall amount (mm): Heavy rain: 64.5 – 115.5, Very heavy rain: 115.6 – 204.4, Extremely heavy rain: 204.5 or more.**

## **Warnings:**

### **(i) Heavy rainfall warning**

- Rainfall at many places with heavy falls at isolated places very likely to commence over north coastal Tamil Nadu and adjoining south coastal Andhra Pradesh from evening of 14<sup>th</sup> November.
- Rainfall at most places with heavy rainfall at isolated places likely over Andaman and Nicobar Islands on 11<sup>th</sup> November 2018 and decrease thereafter.

### **(ii) Wind warning**

- Squally wind speed reaching 45-55 kmph gusting to 65 kmph very likely over and around Andaman Islands and north Andaman Sea during next 12 hours.
- Gale wind speed reaching 60-70 kmph gusting to 80 kmph prevails over Eastcentral and adjoining Westcentral & Southeast Bay of Bengal.
- Wind speed would gradually increase becoming 90-100 kmph gusting to 110 kmph over west central and adjoining southwest Bay of Bengal from morning of 12<sup>th</sup> November 2018.
- Squally wind speed reaching 45-55 kmph gusting to 65 kmph likely to commence along and off north Tamil Nadu – south Andhra Pradesh coasts from 14<sup>th</sup> November morning.

### **(iii) Sea condition**

The sea condition is rough to very rough over north Andaman Sea and southeast & adjoining eastcentral Bay of Bengal. It is high over Eastcentral and adjoining Westcentral & Southeast Bay of Bengal. It will become 'very high' over west central and adjoining southwest Bay of Bengal on 13<sup>th</sup> and over southwest and adjoining Westcentral Bay of Bengal during 12-14 November and high on 15<sup>th</sup>. The sea condition is very likely to be rough to very rough along and off Tamil Nadu -south Andhra Pradesh coasts from 14<sup>th</sup> November morning.

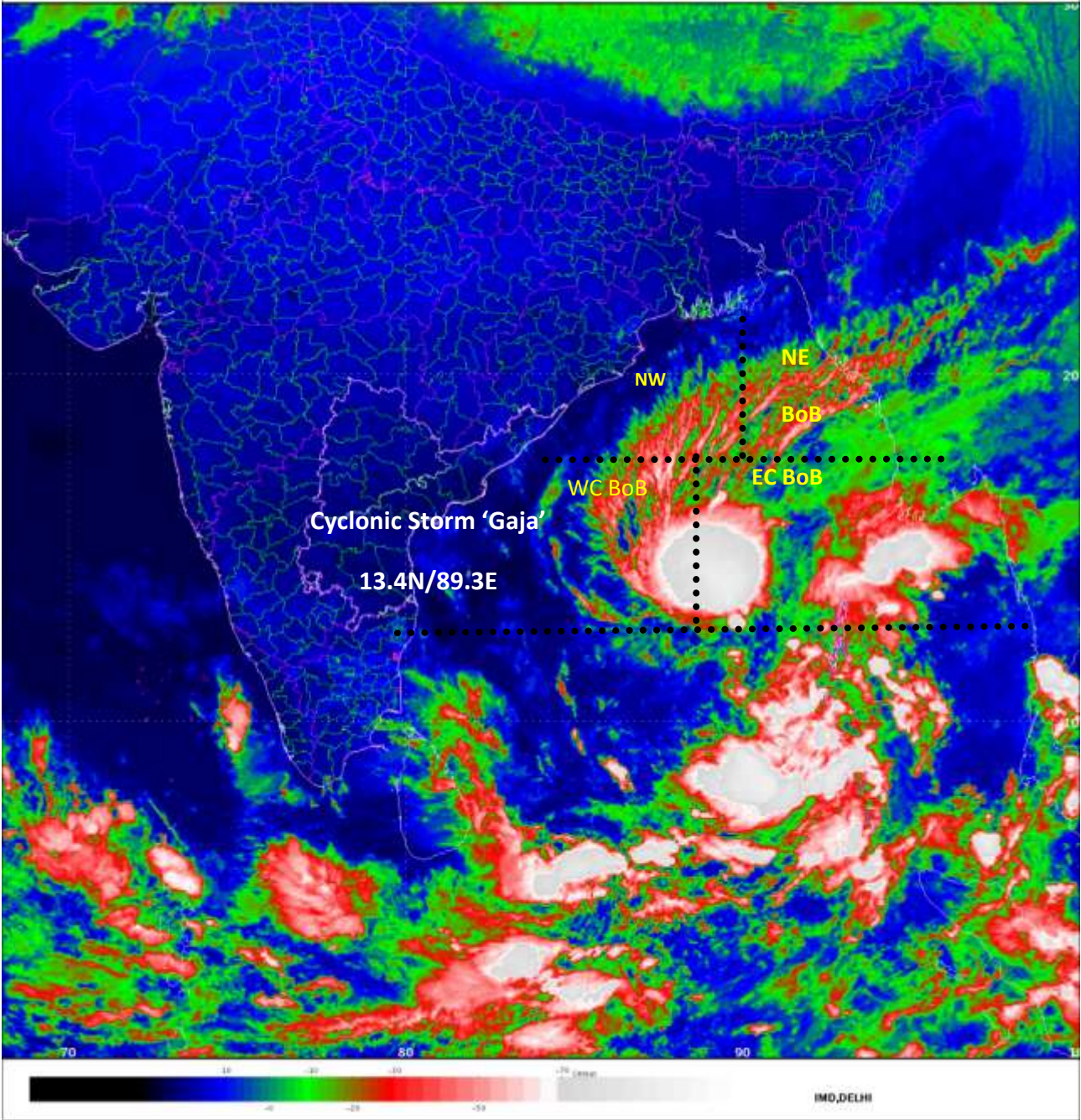
### **(iv) Fishermen Warning**

- The fishermen are advised not to venture into Andaman Sea during next 12 hours, over central and adjoining southeast Bay of Bengal during 11<sup>th</sup> – 13<sup>th</sup> and over southwest and adjoining westcentral Bay of Bengal from 12<sup>th</sup> November onwards.

*The next bulletin will be issued at 1130 hrs IST of 11<sup>th</sup> November, 2018.*

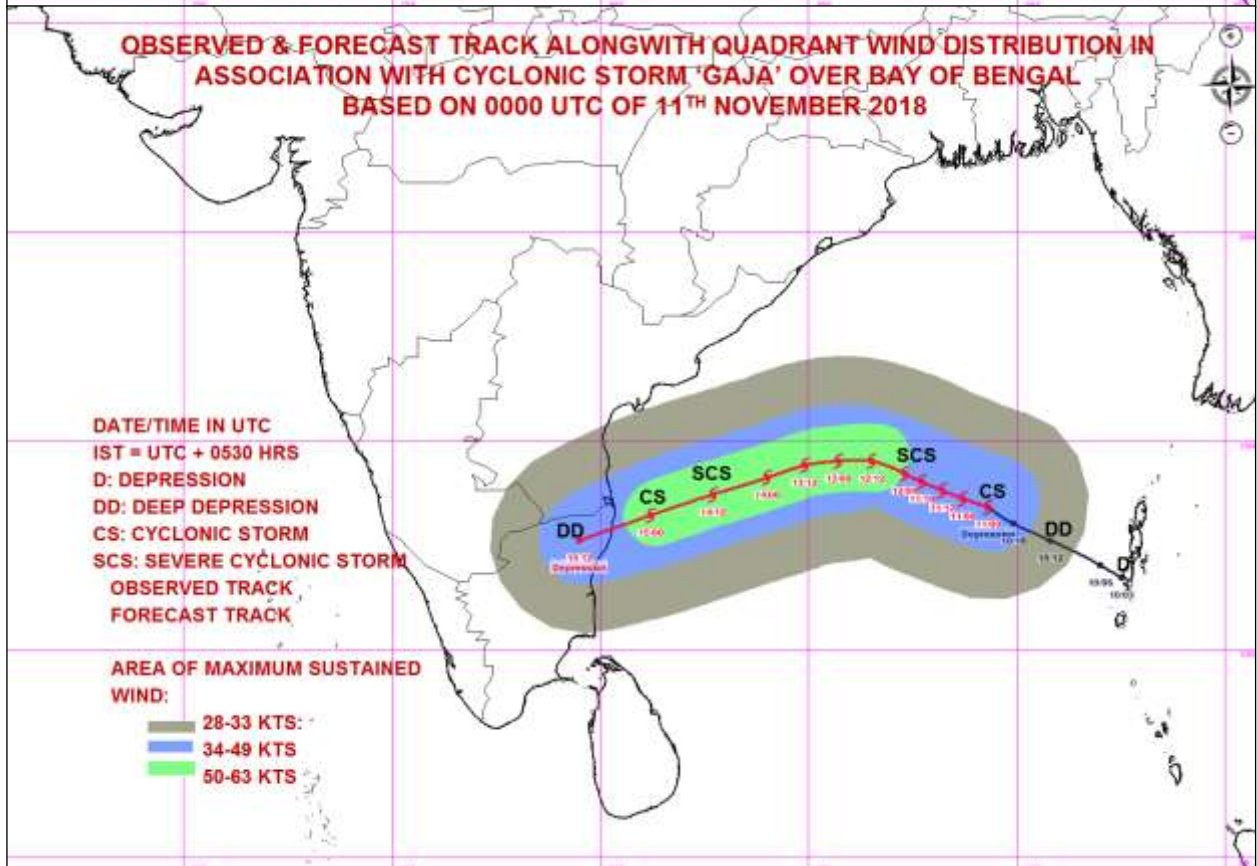
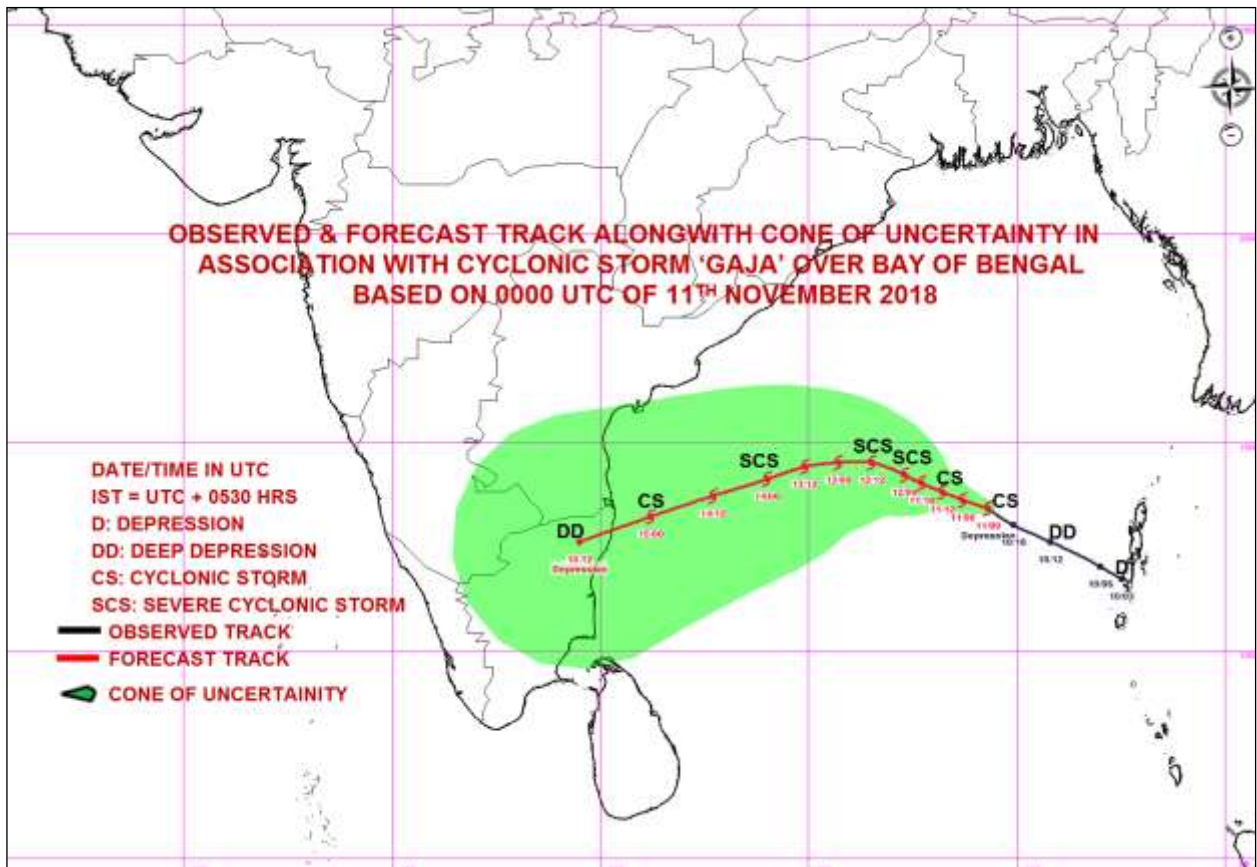
**(D.R. Pattanaik)**  
**Scientist-E, RSMC, New Delhi**

*Copy to: CRS, Pune/ ACWC Kolkata/ Chennai/ CWC Bhubaneswar/CWC Thiruvananthapuram*



Spatial rainfall distribution: Isolated: <25%, A few: 26-50%, Many: 51-75%, Most: 76-100%  
Rainfall amount (mm): Heavy rain: 64.5 – 115.5, Very heavy rain: 115.6 – 204.4, Extremely heavy rain: 204.5 or more.





**Spatial rainfall distribution: Isolated: <25%, A few: 26-50%, Many: 51-75%, Most: 76-100%**  
**Rainfall amount (mm): Heavy rain: 64.5 – 115.5, Very heavy rain: 115.6 – 204.4, Extremely heavy rain: 204.5 or more.**