



India Meteorological Department  
Earth System Science Organisation  
(Ministry of Earth Sciences)

BULLETIN NO. : 49 (BOB/09/2018)

TIME OF ISSUE: 0230 HOURS IST

DATED: 17.11.2018

FROM: INDIA METEOROLOGICAL DEPARTMENT (FAX NO. 24643965/24699216/24623220)

TO: CONTROL ROOM, NDM, MINISTRY OF HOME AFFAIRS (FAX.NO. 23093750)

CONTROL ROOM NDMA (FAX.NO. 26701729)

CABINET SECRETARIAT (FAX.NO.23012284, 23018638)

PS TO HON'BLE MINISTER FOR S & T AND EARTH SCIENCES (FAX NO.23316745)

SECRETARY, MOES, (FAX NO. 24629777)

H.Q. (INTEGRATED DEFENCE STAFF AND CDS) (FAX NO. 23005137/23005147)

DIRECTOR GENERAL, DOORDARSHAN (23385843)

DIRECTOR GENERAL, AIR (23421105, 23421219)

PIB MOES (FAX NO. 23389042)

UNI (FAX NO. 23355841)

D.G. NATIONAL DISASTER RESPONSE FORCE (NDRF) (FAX NO. 26105912/23438091)

DIRECTOR, PUNCTUALITY, INDIAN RAILWAYS (FAX NO. 23388503)

CHIEF SECRETARY, ANDHRA PRADESH (FAX NO. 0863-2441029)

CHIEF SECRETARY, TAMIL NADU (FAX NO. 044-25672304, 25672603, 28546624)

CHIEF SECRETARY, PUDUCHERRY (FAX NO. 0413-2337575)

CHIEF SECRETARY, KERALA (FAX NO. 0471- 2327176)

CHIEF ADMINISTRATOR, LAKSHDWEEP (FAX NO. 04896- 262184)

**Sub: Depression over Southeast Arabian Sea**

The Depression over central Kerala moved nearly westwards and lay centered at 2330 hrs IST of yesterday, the 16<sup>th</sup> November, 2018 over Southeast Arabian Sea near latitude 09.9°N and longitude 75.3°E, about 100 km west of Kochi and 310 km east-southeast of Amindivi. It is very likely to move nearly westwards across Southeast Arabian Sea during next 48 hours.

Forecast track and intensity are given in the following table:

Date/Time(IST)	Position (Lat. °N/ long. °E)	Maximum sustained surface wind speed (Kmph)	Category of cyclonic disturbance
16.11.18/2330	9.9/75.3	40-50 gusting to 60	Depression
17.11.18/0530	9.8/74.2	40-50 gusting to 60	Depression
17.11.18/1130	9.8/73.2	40-50 gusting to 60	Depression
17.11.18/1730	9.7/72.1	45-55 gusting to 65	Depression
17.11.18/2330	9.7/71.1	45-55 gusting to 65	Depression
18.11.18/1130	9.8/69.0	45-55 gusting to 65	Depression
18.11.18/2330	9.9/67.0	40-50 gusting to 60	Depression

**Warnings:**

**(i) Heavy rainfall warnings:**

- Rainfall at most places with heavy to very heavy falls at isolated places very likely over Kerala and Lakshadweep during next 24 hours.

**(ii) Wind warning**

- **Squally wind speed reaching 40-50 kmph gusting to 60 kmph** very likely over Southeast Arabian Sea and Lakshadweep Area during next 48 hours and along & off Kerala coast during next 24 hours.

**(iii) Sea condition**

- Sea condition will be rough to very rough over southeast Arabian Sea and Lakshadweep area during next 48 hours and along & off Kerala coast during next 24 hours.

**(iv) Action Suggested:**

- The fishermen are advised not to venture into southeast Arabian Sea, Lakshadweep Area and along & off Kerala coast during next 48 hours.

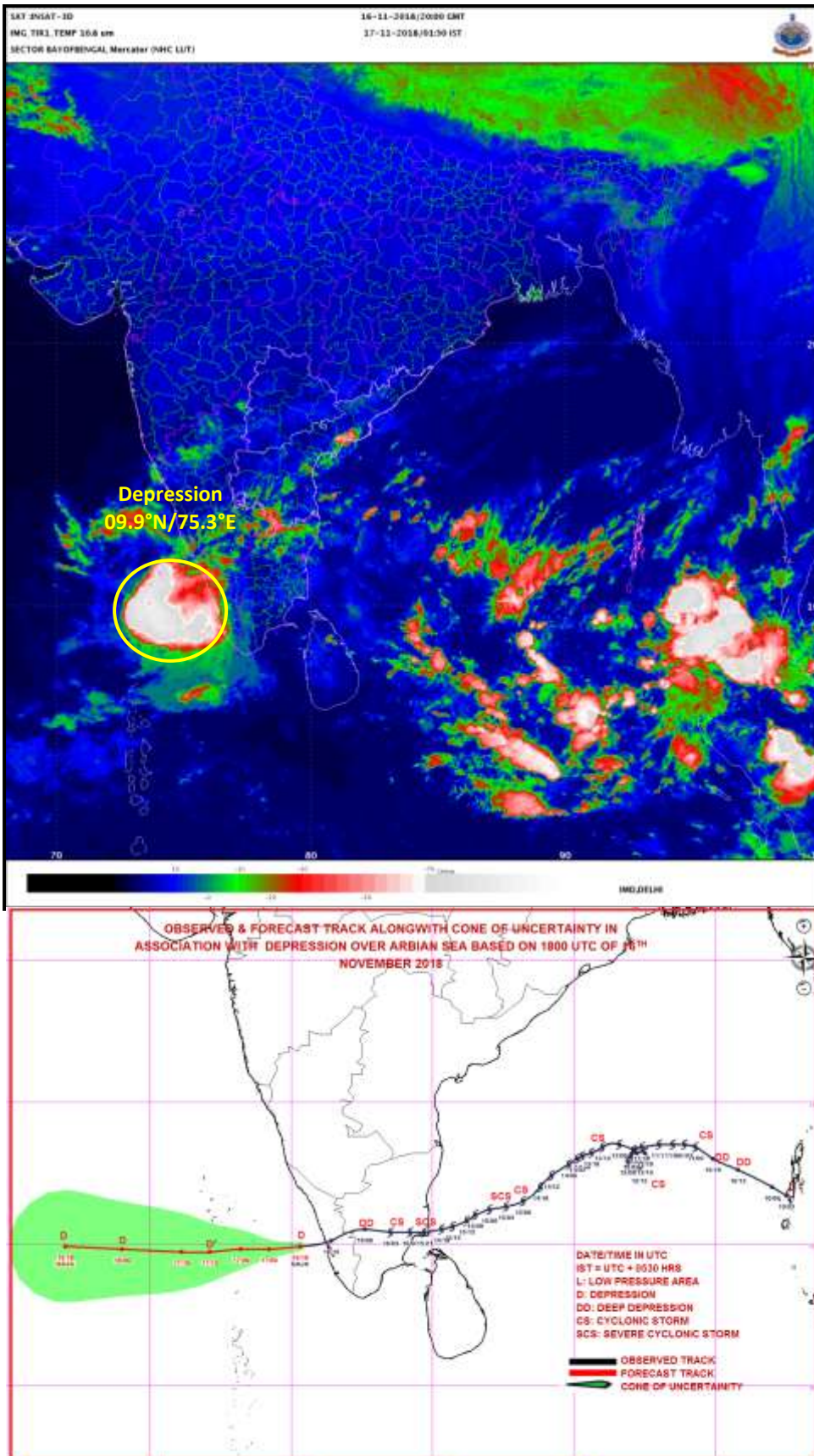
*The next bulletin will be issued at 0830 hrs IST of today, the 17<sup>th</sup> November, 2018.*

(Krishna Mishra)  
Scientist-B, RSMC, New Delhi

Copy to: CRS Pune/ ACWC Kolkata/ Chennai/ CWC Bhubaneswar/ CWC Thiruvananthapuram/ Visakhapatnam

**Spatial rainfall distribution: Isolated: <25%, A few: 26-50%, Many: 51-75%, Most: 76-100%**

**Rainfall amount (mm): Heavy rain: 64.5 – 115.5, Very heavy rain: 115.6 – 204.4, Extremely heavy rain: 204.5 or more.**



Spatial rainfall distribution: Isolated: <25%, A few: 26-50%, Many: 51-75%, Most: 76-100%  
 Rainfall amount (mm): Heavy rain: 64.5 – 115.5, Very heavy rain: 115.6 – 204.4, Extremely heavy rain: 204.5 or more.