

A wide-angle, high-angle photograph of the Lincoln Center plaza at night. The central feature is a large, illuminated fountain with multiple jets of water cascading down. The water is brightly lit from below, creating a glowing effect. A large crowd of people, including families and individuals, is gathered around the fountain, many holding up their phones to take pictures. The Lincoln Center building is visible in the background, with its iconic facade and large windows. To the left, a tall, modern light sculpture with multiple vertical beams of light is visible. The overall scene is vibrant and lively, capturing the energy of the city at night.

Lincoln Center
2017/18



Haydn's Enlightenment-era oratorio *The Creation* was transformed into an immersive theatrical experience by the Catalanian theater collective La Fura dels Baus. The production, at the Rose Theater, employed visual pyrotechnics, large helium balloons, a 20-foot-tall crane, and a 250-gallon water tank to produce a stunning portrayal of the emergence of life. Laurence Equilbey led the period-instrument ensemble Insula Orchestra, the accentus choir, and soloists.

Lincoln Center 2017/18

Who We Are

p. 5

Our Programs & Festivals

p. 35

Our Friends & Finances

p. 51



Renée and Robert Belfer Music Director Louis Langrée joins members of the cast of *Bernstein MASS*, which was performed as part of the 2018 Mostly Mozart Festival in honor of the composer's centennial.



Dear Friends:

Over more than half a century, Lincoln Center has evolved to not only meet the needs of increasingly demanding audiences—we have led the way as one of the world's most prominent performing arts centers. We have done so with one guiding principle: The arts are a civil right and should be available to all.

Looking towards the next sixty years, it is clear that to remain committed to that principle, we have to be nimble and responsive to a rapidly changing world as well as to the diverse needs of our ever-expanding audiences. The arts mean different things to different people. For some, music, dance, and theater are a way of connecting to a shared history. For others, the arts are future-facing tools illuminating what is possible when we all come together, a platform for rethinking the world around us. As Lincoln Center, we have a responsibility to honor and serve both points of view—and all the artistic experiences that lie somewhere in between.

To continue leading by example requires a willingness to constantly re-examine and improve on even our most cherished traditions. The Mostly Mozart Festival is a perfect example. Long considered one of New York's most beloved summer events, the festival has steadily evolved. This year—in a move we are sure even Mozart himself would appreciate—we took a great leap forward by adding three innovative stagings of classic works: *NINAGAWA Macbeth*, Shakespeare's masterpiece restaged in feudal Japan; a production of *Bernstein MASS*, which immersed the audience in the action; and La Fura dels Baus's bold reworking of Haydn's *Creation*. The festival, anchored as always by superb performances by the Mostly Mozart Festival Orchestra under the direction of Renée and Robert Belfer Music Director Louis Langrée, was bookended by two contemporary works: Lucinda Childs's *Available Light*, a 20th-century landmark of dance, and John Luther Adams's *In the Name of the Earth*, a choral work commissioned by Lincoln Center and performed by hundreds of professional and amateur singers in a free performance at the Cathedral of St. John the Divine.

Accessible performances, long a hallmark of Lincoln Center, are the ultimate expression of our firm commitment to the belief that Lincoln Center belongs to everyone—from more than 100 free performances year-round at the David Rubenstein Atrium to Lincoln Center Out of Doors, the nation's longest-running free outdoor festival, with audiences topping 100,000 each year.

In 2018 we took the idea of accessibility a step further by creating the Big Umbrella Festival, the first initiative of its kind to provide performances for young people on the autism spectrum (a hugely underserved population), as well as workshops for artists and producers from around the world wanting to replicate this work back home. Recognizing that one in sixty-eight young people in this country are diagnosed with autism spectrum disorder each year—a number which has aggressively increased in recent years—we felt it was the festival's responsibility to empower others to carry on this work in their communities.

We are equally proud of our standard-setting work that takes place behind the scenes, including the 2017 creation of a Diversity, Equity, and Inclusion Council, a group of employees who meet regularly with the goal of achieving a more inclusive and equitable workplace. Also noteworthy is our ongoing commitment to protect the environment, in alignment with New York City's robust sustainability goals. Over the past decade, we have implemented several important changes to permanently improve energy, water, and waste efficiency on our campus.

In a time when the world seems to be increasingly polarized, we are honored to be able to offer an alternative vision: the arts as a realm of personal, intellectual, and emotional renewal that builds community through shared experiences. We are grateful to all who support our efforts and those of our constituents.

Sincerely,

Katherine Farley
Chair

Russell Granet
Acting President



Who We Are

Lincoln Center for the Performing Arts (LCPA) serves three primary roles: presenter of artistic programming, national leader in arts education and community engagement, and manager of the Lincoln Center campus, in support of ten constituent organizations. In addition, LCPA led a \$1.2 billion campus renovation, completed in October 2012.

The Constituent Organizations of Lincoln Center

The Chamber Music Society of Lincoln Center

Film Society of Lincoln Center

Jazz at Lincoln Center

The Juilliard School

Lincoln Center Theater

The Metropolitan Opera

New York City Ballet

New York Philharmonic

The New York Public Library for the Performing Arts

School of American Ballet

Lincoln Center for the Performing Arts



World-Class Programming for the Whole Family

During the 2017–18 season, family programming served more than **15,000** people and expanded in scope to include **infants and toddlers**.

The Big Umbrella Festival kickoff event on April 14, 2018, included performances by Trusty Sidekick Theater Company, musician Brady Rymer and the Little Band That Could, and Actionplay Chorus, a group of young performers on the autism spectrum led by music therapist Gabriel Lit.

Leveling the Playing Field

Arts Audition Boot Camp prepares kids to compete for slots at New York's competitive arts high schools.



The Middle School Arts Audition Boot Camp, a partnership between Lincoln Center Education and the New York City Department of Education, offers rising eighth graders in New York City public schools two weeks of intensive training in acting, voice, music, visual art, and dance to help prepare them to audition for competitive arts high schools.

Creating a Big Umbrella



The world's first large-scale performing arts festival for young audiences on the **autism spectrum** welcomed schools and families to campus to experience immersive, **sensory-friendly** performances, complemented by professional development seminars for artists and educators.

Lincoln Center Education's commission *Up and Away*, one of the sensory-friendly performances offered as part of the Big Umbrella Festival, invited children on the autism spectrum on a magical hot-air balloon trip beyond the clouds and back.

Inspiring the Inspirers

#LCEForum

Lincoln Center Education
Summer Forum

Lincoln Center Education's flagship professional development program, Summer Forum, hosted **more than 300** educators, artists, and administrators from **11 countries** over the course of **three weeks** in July.

Summer Forum keynote speaker Tarana Burke (center), founder of the #MeToo movement—on stage with Lincoln Center Education's Brooke Whitaker-Royster (left) and Alex Sarian (right)—delivered a powerful statement for educators, artists, and other professionals.

Recognizing Excellence

LINCOLN CENTER AWARDS FOR EMERGING ARTISTS

Lincoln Center recognizes eleven up-and-coming talents across artistic disciplines through the annual Lincoln Center Awards for Emerging Artists, presented in partnership with The Movado Group Foundation.

Lincoln Center for the Performing Arts Chair Katherine Farley, host Jordan Donica, and presenters Michael Cerveris and Desmond Richardson with the 2018 Lincoln Center Awards for Emerging Artists recipients, in alphabetical order: pianist Michael Brown; soprano Michelle Bradley; filmmaker Eliza Hittman; corps de ballet member Ashley Hod; dancer Davide Riccardo; pianist Conrad Tao; pianist Isaiah Thompson; composer Anna Thorvaldsdottir; bass-baritone Davóne Tines; playwright Bryna Turner; and dancer and choreographer Preeti Vasudevan.



Priceless Art, Absolutely Free

As part of Lincoln Center Out of Doors, Wu-Tang Clan founding member and hip-hop legend RZA and friends performed a newly arranged live score to the classic 1978 kung fu film, *The 36th Chamber of Shaolin*, one of the primary inspirations for the Wu-Tang Clan's influential aesthetic.



More than 675,000 people enjoyed over
135 world-class performances —all free
—in 2017–18.

Swinging Under the Stars

Midsummer Night Swing, presented by NewYork-Presbyterian, attracted more than **38,000** lovers of social dance—from salsa to ballroom to tango—to Damrosch Park this year.



The dance floor was packed for Naomi & Her Handsome Devils, who kept the party swinging all night long on July 6, 2018.

All the World's a Stage

Bringing breathtaking productions and
global artistry to our campus.

NINAGAWA Macbeth, a revival of the original 1980 production from Japan—and the last production overseen by legendary director Yukio Ninagawa before his death in 2016—was given its final staging as part of the newly expanded 2018 Mostly Mozart Festival. American Express is the lead sponsor of the Mostly Mozart Festival.

Increasing access to cultural opportunities across New York

Now in its second year, the Lincoln Center Cultural Innovation Fund, a partnership with The Rockefeller Foundation, stimulates cultural participation by supporting outstanding nonprofit organizations that provide cultural activities in the South Bronx and Central Brooklyn.

With support from the Lincoln Center Cultural Innovation Fund, the Bronx Documentary Center created *Claremont Illuminated*, a two-day evening photography festival that activated a dark and isolated stairwell at 169th Street and Webster Avenue on the edge of Claremont Village, a New York City Housing Authority public housing development in the South Bronx.

Madrigal-Piña Creating a Platform for All Voices

Lincoln Center's stages activate
conversations and dialogue
about the issues of our times.



As part of the Voices of a People's History series at the David Rubenstein Atrium, commissioned by Lincoln Center, student performers from The Maxine Greene High School for Imaginative Inquiry brought to life the words of ordinary people engaged in struggles for freedom and justice.



From Our Stages to Your Home

Since **1976**, *Live From Lincoln Center* has broadcast more than **250** stellar performances on PBS and is increasingly distributed online and in movie theaters, reaching millions of people **around the globe.**

For four consecutive Friday evenings last spring, PBS viewers around the world had the best seats in the house for an extraordinary lineup of Broadway artists captured live at the Appel Room: Leslie Odom Jr., Andrew Rannells (pictured), Sutton Foster with guest star Jonathan Groff, and Stephanie J. Block.

Making the Arts Accessible for All

Lincoln Center leads the way in **welcoming everyone**, offering free programs for people with dementia and their caregivers, performances and workshops for young people with **disabilities**, and more.

In its third season, Lincoln Center Moments—an innovative program designed especially for people with dementia and their caregivers—included twelve performances, each followed by discussion, art, and a music-making workshop.

Lincoln Center Young Patrons events attract culture-loving New Yorkers in their 20s and 30s with a unique menu of curated events.

Engaging the Future



In January, the Lincoln Center Young Patrons hosted the sold-out event *Yeethoven II: Two Eras, One Radical Spirit*, which invited the audience to compare the lasting legacies of Ludwig van Beethoven and Kanye West. The live performance in Alice Tully Hall was followed by a post-show party featuring a DJ, open bar, and light snacks.

Connecting Whenever, Wherever

Lincoln Center's social media channels
reached **43.4 million people.**

Last year, content posted on Lincoln Center's Facebook, Twitter, and Instagram feeds reached 43.4 million people, more than three times greater than the number of people who visited Lincoln Center's campus in person. With a continually evolving and nimble strategy, Lincoln Center is harnessing social media's power as a major force for institutional storytelling and a platform for audience engagement. Above: Conductor Simon Halsey and composer John Luther Adams following the world premiere of Adams's work, *In the Name of the Earth*



Our Programs & Festivals

Available Light, a groundbreaking collaboration between composer John Adams, choreographer Lucinda Childs, and architect Frank Gehry, returned to New York for the first time since 1983 to open the 2018 Mostly Mozart Festival.

Festivals and Performance Series

In addition to world-class performances presented by our constituent organizations, Lincoln Center for the Performing Arts produces high-caliber artistic festivals and series all year long. We focus on commissioning, curating, and presenting a variety of national and international performances that reflect the rich diversity of our audiences. We are also continuously working to expand the reach of our artistic programming by offering free performances throughout the year and using digital platforms to bring what's happening on Lincoln Center's stages to a global audience.

Fall/Winter

Great Performers

October–May

White Light Festival

October–November

American Songbook

January–March

Year-round

David Rubenstein Atrium at Lincoln Center

LC Kids

Spring/Summer

Midsummer Night Swing

June–July

Lincoln Center Out of Doors

July–August

Mostly Mozart Festival

July–August



Simon Rattle and tenor Stuart Skelton performing Mahler's *Das Lied von der Erde* with the London Symphony Orchestra.

Great Performers

October–May

The world's most inspiring artists interpret the world's greatest classical masterpieces

The 52nd season of Great Performers showcased distinguished artists from around the globe. The season opened with a celebration of the 450th anniversary of Claudio Monteverdi's birth in semi-staged performances of the composer's three surviving operas by the English Baroque Soloists and the Monteverdi Choir, led by Sir John Eliot Gardiner. The great Gustav Mahler was the focus of the season's final programs, with Sir Simon Rattle conducting the London Symphony Orchestra in performances of the Austrian master's final three symphonic works. Other highlights included appearances by the Swedish Chamber Orchestra and Swedish Radio Choir, conducted by Thomas Dausgaard; the virtuosic Bach Collegium Japan and soloists under the direction of Masaaki Suzuki; Iván Fischer and the Budapest Festival Orchestra; and Gustavo Dudamel leading the Los Angeles Philharmonic.



The Choir of Trinity Wall Street, led by its music director Julian Wachner, in the opening concert of the White Light Festival's *The Psalms Experience* at St. Paul's Chapel.



Lizz Wright, whose stylings blend soul and gospel, performing on Valentine's Day 2018 in The Appel Room.

White Light Festival

October–November

A festival that sparks illumination, introspection, and conversation

In its eighth season, the White Light Festival (October 18–November 15, 2017) inspired audiences with productions featuring the world's leading musicians, choreographers, and directors, complemented by talks and post-performance lounges. The festival's centerpiece was *The Psalms Experience*, an extraordinary 12-concert event that brought together four internationally renowned choirs, performing 150 musical psalm settings—including eight new commissions—by 150 composers, spanning 1,000 years of musical history.

American Songbook

January–March

Celebrating America's rich and varied tradition of popular song in some of our most welcoming venues

Embracing a range of musical styles and traditions, including Broadway, pop, rock, jazz, R&B, soul, Americana, bluegrass, and folk, the 14 concerts of American Songbook's 2018 season put the spotlight on composers and lyricists—including Stew and Heidi Rodewald and Scott Frankel and Michael Korie—and showcased legendary interpreters, from icons such as Rosanne Cash and The Blind Boys of Alabama to iconoclasts the likes of comedian Jackie Hoffman and indie band Cloud Cult. Lead support provided by PGIM, the global investment businesses of Prudential Financial, Inc.



The Harlem Renaissance Orchestra kept their summer tradition alive by closing the festival with a night of big band swing on July 14, 2018. Midsummer Night Swing is presented by NewYork-Presbyterian.



For the *Selena for Sanctuary* event on July 26, 2018, a collection of inspired—and inspiring—young artists, including Gaby Moreno, came together to pay tribute to the late Selena Quintanilla-Pérez while raising awareness about immigrant rights.

Midsummer Night Swing

June–July

New York's most popular summer dance party under the stars

Celebrating all styles of social dancing—from Lindy hop to disco to salsa—Midsummer Night Swing has been attracting people of all ages and experience levels to Damrosch Park's open-air dance floor for nearly thirty years. From June 26–July 14, 2018, New Yorkers put aside their inhibitions and donned their dancing shoes for rousing shows by stellar ensembles, including Sisterhood of Swing, the Harlem Renaissance Orchestra, the alternative salsa band Orquesta El Macabeo, and the soul sensation James Hunter.

Lincoln Center Out of Doors

July–August

The country's longest-running, completely free outdoor festival for audiences of all ages

This beloved free festival, with annual audiences of more than 100,000, celebrated its 48th season from July 24–August 12, 2018, with performances by a thrilling lineup of headliners including Wu-Tang Clan's RZA, Grammy Award-winner Raphael Saadiq, Dance Theatre of Harlem, and icon Mavis Staples. In *Selena for Sanctuary*—a special evening to raise awareness about immigrant rights—Latinx musicians from around the country came together to celebrate the songs of Tejano music superstar Selena Quintanilla-Pérez. The second edition of *Turning the Tables*, a collaboration with NPR Music that recognizes women's contributions to popular music, spotlighted 21st-century emerging artists with performances by Carly Rae Jepsen, Jamila Woods, Mitski, Phoebe Bridgers, and I'm With Her.



Winner of Radio France International's Prix Découvertes in 2015, Elida Almeida performed at the David Rubenstein Atrium on June 21, 2018, as part of the France Rocks Festival.

David Rubenstein Atrium at Lincoln Center

A lively, year-round line-up of free performances, talks, and more for audiences of all ages

Since 2009, the David Rubenstein Atrium at Lincoln Center has become known as one of the city's most eclectic performance venues. In 2017–18, the Atrium hosted 107 free events. Its signature performance series, Atrium 360°, continued to reflect the diversity of genres and global communities within New York City, with performances ranging from Mauritanian superstar Noura Mint Seymali to legendary guitarist Vernon Reid, while the Latin dance parties of ¡VAYA! 63 and collaborative projects such as Outside (In)dia celebrated the cross-pollination of styles and genres. LC Kids Artists at the Atrium offered little ones and their parents a monthly opportunity to experience free, dynamic performances by a diverse lineup of performing artists. *New Yorker* essayist and author Adam Gopnik returned for season three of The History of the World in 100 Performances, with deep dives into *My Fair Lady*, *Hamilton*, and Stravinsky's *The Rite of Spring*.



Brady Rymer and the Little Band That Could kicked off the Big Umbrella Festival on April 14, 2018. LC Kids is presented by NewYork-Presbyterian.

LC Kids

World-class performances, parties, and free events for families

In its third full season, LC Kids welcomed more than 15,000 children and adults to Lincoln Center for ticketed and free events by some of the world's most renowned family performers. The season saw an expansion of programming to include the youngest of audiences—infants and toddlers up to 24 months old. During Autism Awareness Month in April 2018, Lincoln Center presented the Big Umbrella Festival, the world's first month-long festival for young audiences on the autism spectrum, welcoming schools and families to campus to experience immersive, sensory-friendly performances, and offering professional development seminars for artists from around the world. LC Kids' two free series, Artists at the Atrium and LC Kids Storytime, continued to draw crowds of happy kids and families to the David Rubenstein Atrium.



Performers and audience members surround composer John Luther Adams and conductor Simon Halsey after the world premiere of Adams's *In the Name of the Earth*, commissioned by Lincoln Center for the Mostly Mozart Festival. American Express is the lead sponsor of the Mostly Mozart Festival.

Mostly Mozart Festival

July–August

An expanded festival that captures the unmatched creativity of Mozart

The Mostly Mozart Festival, a beloved summer tradition for more than 50 years, spread its wings in 2018, expanding to include more multidisciplinary presentations, enhancing its commitment to the music of our own time, and extending its geographical footprint to Brooklyn. Signaling this bold new direction, the festival opened with performances of the 20th-century dance masterpiece *Available Light*, choreographed by Lucinda Childs, and included the world premiere of *In the Name of the Earth*, a Lincoln Center–commissioned

immersive musical experience by Pulitzer Prize–winning composer John Luther Adams, performed by hundreds of amateur and professional singers in the Cathedral of St. John the Divine. A rich array of orchestral, chamber, solo, spoken word, and staged performances rounded out the festival, which, as always, was anchored by vibrant performances by the Mostly Mozart Festival Orchestra led by Renée and Robert Belfer Music Director Louis Langrée.

Lincoln Center Education

Lincoln Center Education (LCE) enriches the lives of students, educators, and lifelong learners through engagement with the arts on the stage, in the classroom, and within communities. Since LCE's founding in 1975, its work has reached more than 20 million students, educators, administrators, parents, community members, and teaching artists.

Teachers & Students



Boot Camp participants learned essential strategies to prepare them for specialized high school auditions.

Teacher Programs

A Lincoln Center tradition for more than forty years, **Summer Forum** brings teachers from all over the world to campus for a three-week period of intensive workshops on a variety of timely—and timeless—subjects. In 2018, Summer Forum hosted educators from 16 states and 11 countries.

Other highlights of LCE's initiatives include the **Lincoln Center Arts Teacher Award**, which, in partnership with the New York City Department of Education's (DOE) Big Apple Awards, contributes \$5,000 annually to a chosen recipient for classroom use and is the only DOE-sponsored award recognizing excellence in the arts. **LC Scholars**, in partnership with Hunter College and the DOE, trains and places top-quality arts teachers in public schools.

Student Programs

Developed with the New York City Department of Education in 2014, the **Middle School Arts Audition Boot Camp** is a two-week training program that helps eighth-grade students prepare to audition for specialized high schools. In 2018, Lincoln Center enrolled more than 250 students in Boot Camp, up from 220 the previous year. Building on the success of Boot Camp, Lincoln Center continued initiatives for high school teens, including the second annual **College and Career Fair**, and **Mentor-Linc**, which launched an internship program to increase knowledge of career pathways in the arts, and a new curriculum designed to develop students' artistic voice and entrepreneurship.

School Programs

In partnership with the New York City Department of Education, **Arts in the Middle** is a multi-year initiative that launched in 2013 with the goal of increasing high-quality arts experiences in middle school and advancing the capacity of administrators and school staff to plan and implement a sustainable arts program.

Communities



Family-Linc guests enjoyed a workshop before attending the Jazz at Lincoln Center concert *Miriam Makeba & Nina Simone: Singing Protest & Memory with Somi* on May 19, 2018.

Borough Programs

This year **Boro-Linc** celebrated family-friendly outdoor festivals in partnership with cultural and community-based organizations in all five boroughs and presented a series of performances and resource fairs in the South Bronx.

Family Programs

Family-Linc continued to partner with community-based organizations, welcoming over 350 families to campus events that included a shared meal, pre-performance workshop, and prime seats at popular performances, all for \$5 per ticket.

Community Artist Programs

The **Community Artist Residencies** program pairs artists with community centers, public spaces, and shelters to increase access to transformative artist experiences beyond Lincoln Center's campus. The program supports the research, development, and realization of local artists' projects to create reciprocal, collaborative works of art based on participants' interests and the artist's vision. This year, artists were active in the South Bronx, in East New York, and at the Lincoln Square Neighborhood Center.

Tours

Each year, Lincoln Center welcomes thousands of members of our local and international communities to campus through guided tours that explore our 16.3-acre campus, tell the insider stories of this iconic destination's past and present, and highlight hidden gems unknown to even the most frequent visitors. All tours are ADA-accessible, and several tour guides are trained in verbal description for guests who are blind or have low vision. Foreign-language tours are also available.

A Variety of Stages

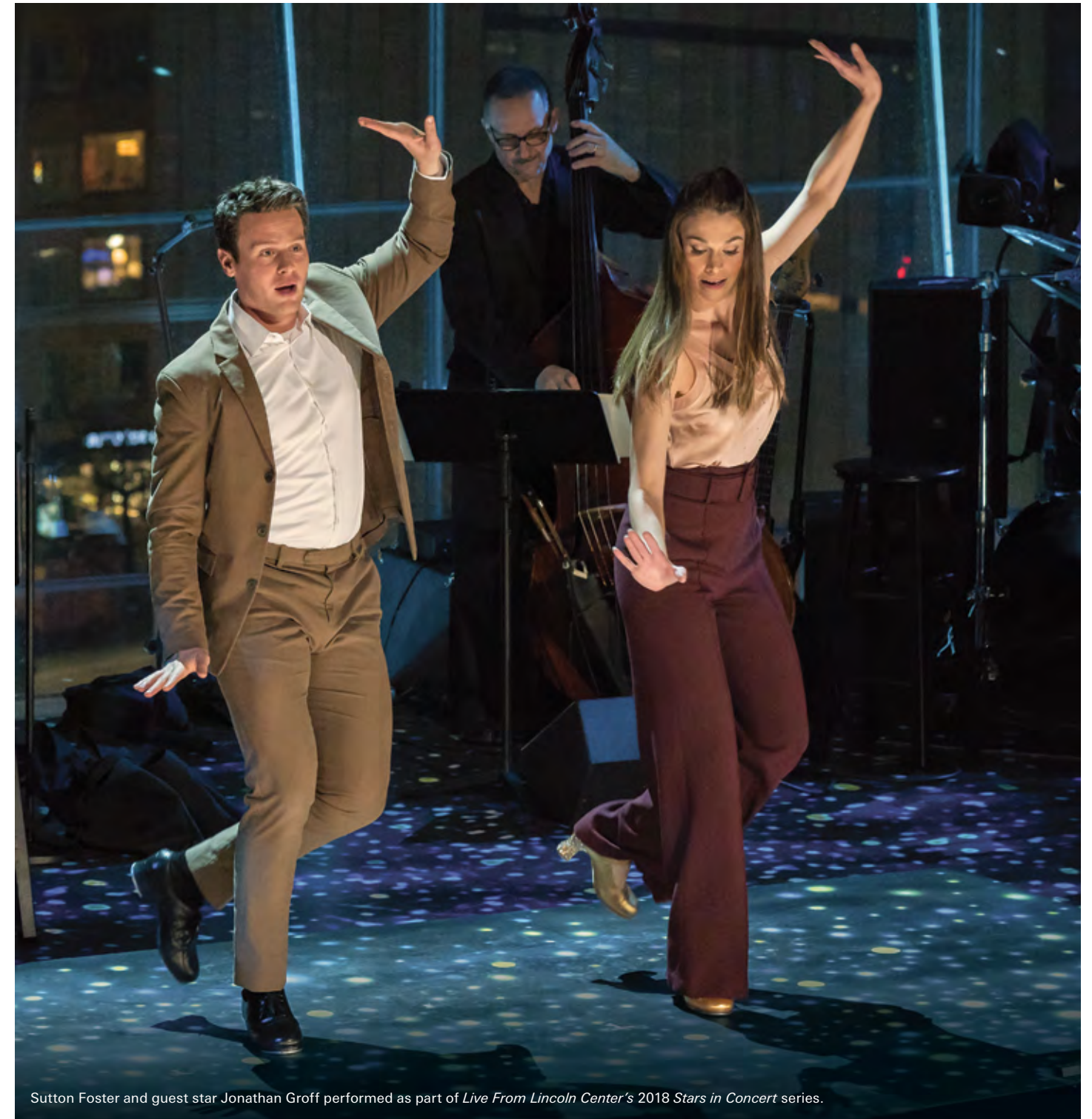


Graduates of the most prestigious music programs perform a wide variety of pieces, from Brahms to The Beatles.

Lincoln Center Stage

Lincoln Center and Holland America Line have partnered to create Lincoln Center Stage, offering passengers on seven cruise ships the chance to enjoy world-class performances on board. Six days a week, ensembles perform three, one-hour programs ranging from classical chamber music to contemporary popular songs, accompanied by light discussion with the musicians. As one of the most popular features on board, each performance fills to capacity.

Lincoln Center Stage offers passengers an excellent selection of programs—ranging from the Baroque to the contemporary—thoughtfully curated to enrich and enhance their journey. Lincoln Center welcomes everyone to experience the transformative effects of the performing arts—onboard, online, or in person at our iconic campus in New York City.



Sutton Foster and guest star Jonathan Groff performed as part of *Live From Lincoln Center's* 2018 Stars in Concert series.

Live From Lincoln Center

Live From Lincoln Center is a cornerstone of performing arts broadcasting, bringing the world's greatest artists and performances in music, dance, and theater from Lincoln Center's renowned stages to households across America on PBS. Since its premiere in 1976, hundreds of millions of people around the globe have tuned in to enjoy performances by legendary performers and ensembles, including Luciano Pavarotti, Mikhail Baryshnikov, Beverly Sills, André Watts, Yo-Yo Ma, Emma Thompson, Itzhak Perlman, Audra McDonald,

and the New York Philharmonic conducted by each of its music directors, from Leonard Bernstein to Alan Gilbert. *Live From Lincoln Center* has won two Peabody Awards and 17 Emmy Awards, including two for the 2016 broadcast of Danny Elfman's *Music from the Films of Tim Burton* and a 2017 nomination for Best Musical Direction for *Joshua Bell: Seasons of Cuba*. Recent episodes and highlights from past seasons are available at [PBS.org](https://www.pbs.org).



Our Friends & Finances

Lincoln Center's Fall Gala, honoring Jane Hartley and Ralph Schlosstein with the Lincoln Center Distinguished Service Award, featured a performance by Emmylou Harris.



Thank You

The arts are about allowing us to see our world in a new light. But any way you look at it—from the breathtaking presentations on our stages to free performances in all five boroughs, from worldwide digital outreach to culturally immersive community events—all of the accomplishments that defined our success at Lincoln Center this year were only possible thanks to your generous donations.

Philanthropic support—along with public funding, bequests, and in-kind contributions—is essential to fulfilling our mission of sharing the world’s best arts with the widest possible audiences.

We are deeply grateful to the many contributors who provide vital support to the cultural, educational, and outreach programs at Lincoln Center. Listed here are those patrons whose annual gifts of \$1,000 or more, including in-kind goods and services, are reflected in every exceptional moment within the pages of this Annual Report.

Thank you for your meaningful commitment to the performing arts and to Lincoln Center.

Not yet part of the Lincoln Center family of contributors?

There are many ways to play a bigger role at the world’s leading performing arts center: You can become a Friend of Lincoln Center today—or begin thinking about tomorrow with a planned gift, through our illustrious Bravo Society. You may be interested in offering pro bono services or helping us send teaching artists to local schools. Please consider this a personal invitation to be one of Lincoln Center’s indispensable advocates or join our inspirational family of supporters.

For more information on making a gift to Lincoln Center, please contact Tamar C. Podell, Executive Vice President, Chief Development Officer, at 212.875.5421 or tpodell@lincolncenter.org.

Annual Supporters

\$1,000,000 and over

Katherine Farley and Jerry I. Speyer
 Frank A. Bennack, Jr. / Steven R. Swartz / Hearst
 Sherman Fairchild Foundation
 Somesh Khanna / McKinsey & Company
 Oak Foundation
 David M. Rubenstein

\$500,000–\$999,999

American Express
 James Dinan and Elizabeth Miller
 Anne and Joel Ehrenkrantz
 Mr. and Mrs. John B. Hess
 Elliot and Roslyn Jaffe
 The Family of Robert Wood Johnson III
 Lincoln Center Corporate Fund
 Laura and Scott Malkin
 Frederick P. and Sandra P. Rose Foundation
 Kara and Stephen M. Ross
 Robert and Gillian Steel
 Steinway & Sons
 Sandra and Tony Tamer
 Laurie M. Tisch Illumination Fund
 Anonymous

\$250,000–\$499,999

Mr. and Mrs. Lawrence D. Ackman
 Sarah Arison & Thomas Wilhelm
 Jody and John Arnhold
 Adrienne Arsht
 Joseph Bae and Janice Lee
 Christina and Robert C. Baker
 Bank of America/ U.S. Trust
 BNY Mellon
 Renée and Robert Belfer
 Steffi and Robert Berne
 Susan and Richard Braddock
 Ellen and Daniel Crown
 The Walt Disney Company
 Dr. Ronald and Beth Dozoretz
 Cheryl and Blair Effron
 William E. Ford
 Jeff Gates and Mike Moran
 Meg and Bennett Goodman
 Mimi and Peter Haas Fund
 Hakluyt & Company
 Ronald G. & Nancy A. Harrington
 Ralph Schlosstein and Jane Hartley
 Rita E. and Gustave M. Hauser
 HBO
 Jim Herbert/First Republic Bank

HNA Group
 Holland America Line
 Chip and Sheryl Kaye
 Julia and David H. Koch
 Suzie and Bruce Kovner
 Thomas H. Lee and Ann Tenenbaum
 Betty and John Levin
 Bryan Lourd
 The Manton Foundation
 MetLife Foundation
 Cheryl and Philip Milstein
 Movado Group Foundation
 Stavros Niarchos Foundation
 Anna Nikolayevsky
 Omnicom Group Inc.
 The Pasculano Foundation
 PepsiCo Foundation
 PGIM
 Esta Eiger Stecher
 Chandrika and Ranjan Tandon
 John A. Thain
 Ann and Thomas Unterberg
 Amanda and John Waldron
 Joe Tsai and Clara Wu
 Ann Ziff

\$100,000–\$249,999

21st Century Fox
 Allen & Company
 The Estate of Jean D. Appleton
 Barbara and James Block
 Cahill Gordon & Reindel LLP
 Citi
 Steven and Alexandra Cohen Foundation
 Cravath, Swaine & Moore LLP
 Dalio Foundation
 The Dinan Family Foundation
 Doris Duke Charitable Foundation
 Ford Foundation
 Lise Strickler and Mark Gallogly
 Gibson, Dunn & Crutcher LLP
 Howard Gilman Foundation
 Glenwood Management
 Gray Foundation
 Marie-Josée and Henry R. Kravis
 Mr. and Mrs. Peter L. Malkin
 The Pierre and Tana Matisse Foundation
 The Andrew W. Mellon Foundation
 LuEsther T. Mertz Charitable Trust
 The New York Community Trust
 Amelia & Bayo Ogunlesi
 Donald A. Pels Charitable Trust

Ronald O. Perelman and Anna Chapman
 Proskauer Rose LLP
 David and Susan Rockefeller
 The Shubert Foundation
 The Taft Foundation
 Target
 The Three Little Pigs Foundation (William E. Ford)
 Alice and Tom Tisch
 Willkie Farr & Gallagher LLP
 Judith and Stanley Zabar

\$50,000–\$99,999

Katie McGrath and J.J. Abrams Family Foundation
 Robert J. Alexander/CBRE
 BlackRock
 The Blavatnik Family Foundation
 Bloomberg Philanthropies
 Aryeh B. Bourkoff
 Russell L. Carson
 Kathryn and Kenneth Chenault
 Chubb
 Cleary Gottlieb Steen & Hamilton LLP
 Joan Ganz Cooney and Peter G. Peterson
 Judith-Ann Corrente and Willem Kooyker
 Chris and Bruce Crawford
 Ravenel Curry
 Deloitte
 Mr. & Mrs. Thomas J. DeRosa
 Jennie L. and Richard K. DeScherer
 The Diller - von Furstenberg Family Foundation
 Judy and Jamie Dimon
 Evelyn H. Lauder Charitable Trust
 The FAR Fund
 Focus Financial Partners
 Bart Friedman and Wendy A. Stein
 Dr. Marjorie & Roy Furman
 Catherine A. Gellert
 General Atlantic
 Kenneth Goldman Donor Fund
 Goldman Sachs
 Abraham and Mildred Goldstein Charitable Trust
 Roberta and Harvey Golub
 The Audrey and Martin Gruss Foundation
 Agnes Gund
 Anne and Bill Harrison
 Marlene Hess and James D. Zirin
 IAC
 Karen and Charles Phillips / Infor
 Jenner & Block LLP
 Brad S. Karp, Chairman, Paul, Weiss, Rifkind, Wharton & Garrison
 The Katzenberger Foundation, Inc.
 Tom and Kitty Kempner
 KPMG LLP
 Gautam Kumra
 Yang Lan
 Shelly and George Lazarus
 Mrs. Jane Lombard
 Audrey Love Charitable Foundation
 Mr. Anand Mahindra

Annual Supporters

José Roberto Marinho
Howard and Nancy Marks
Mastercard
Kiran Mazumdar-Shaw
Tom and Tai Mendoza
Mercantil Bank
Stacey and Eric Mindich
Mitsui & Co. (U.S.A.), Inc.
The Ambrose Monell Foundation
Renata Nascimento
Jenny and John Paulson
Charles Phillips
The Pinkerton Foundation
Evercore Friends
Ms. Sophie Xiaohong Qi
Hon. Stephen C. Robinson
The Rockefeller Foundation
Carlos and Gabriela Rodriguez-Pastor
María Catalina Saieh Guzmán
The Fan Fox and Leslie R. Samuels
Foundation, Inc.
Nancy & Alan Schwartz
Sotheby's
Sullivan & Cromwell LLP
Tina and Steven Swartz
Time Warner Inc.
Esme Usdan and James Snyder
Barbara and John Vogelstein
The Walton Family Foundation
Brad and Patty Wechsler
Wildes & Weinberg, P.C.
Janice Savin Williams and Christopher J. Williams
Sid Yog
Zabar's and Zabars.com
The Trust Under the Will of Roberta L. Zuhlke
Anonymous

\$25,000–\$49,999

Accenture
Roger Altman and Jurate Kazickas
AMC Networks
Keith and Debbie Banks
Anne H. Bass
Mrs. Mercedes T. Bass, Mercedes T. Bass
Charitable Corporation
Mr. and Mrs. Frederick C. Benenson
Mary Lake and Frank Bennack
Dr. Georgette Bennett and Dr. Leonard S.
Polonsky
Neil G. Bluhm
BNY Mellon Wealth Management
Tina and Jeffrey Bolton
Boston Consulting Group
Shirley Brodsky
Clarissa & Edgar Bronfman Jr. Foundation
Jeff and Susan Campbell
CBS Corporation
Simona and Jerome A. Chazen
Choi & Burns
The Coca-Cola Company
Timothy and Andrea Collins
Continental Grain Company
Susan and David Coulter
Creative Artists Agency
Credit Suisse
Nancy and Steve Crown
Constans Culver Foundation

Mark & Susan Dalton
Davis Polk & Wardwell LLP
Dell
Diamond Schmitt Architects
Mrs. Junia Doan
Jonathan and Susan Dolgen
Jane & Robert Draizen
Drinker Biddle & Reath LLP
Eva and Glenn Dubin
EY
Marilyn and Lawrence Friedland
David Geffen Foundation
Michael and Mary Gellert
General Catalyst
Ann and Gordon Getty Foundation
Arlene and Robert M. Goldberg and
The Fay J. Lindner Foundation
Jon & Mindy Gray Family Foundation
Myrna & Steve Greenberg
Judd B. Grossman, Grossman LLP
Nancy and Stanley Grossman
The Guardian Life Insurance Company
of America
The William Randolph Hearst Foundations
Roberta A. Herbison
The DuBose and Dorothy Heyward
Memorial Fund
Hilton Club New York
Shelley and Allan Holt
Rita J. and Stanley H. Kaplan Family
Foundation, Inc.
The Marilyn and Jeffrey Katzenberg
Foundation
Mrs. Robert Kaufman (Florence)
Christine M. Kim and Jung Hoon Chang
Robert K. Kraft
Orin S. Kramer
Kramer Levin Naftalis & Frankel LLP
Jo Carole and Ronald S. Lauder
Lazard
LionTree LLC
The Litwin Foundation
George Lucas Family Foundation
Vincent and Anne Mai
Phyllis Mailman
Leni and Peter May
The John P. and Anne Welsh McNulty
Foundation
Julie and Edward J. Minskoff
Mitsubishi Corporation (Americas)
Morgan Stanley
Mound Cotton Wollan & Greengrass LLP
Nandansons Charitable Foundation/Anuj Gupta
Netflix
NewYork-Presbyterian Hospital
NEXT for AUTISM
John H. and Ethel G. Noble Charitable Trust
The Olayan Group
James and Melissa O'Shaughnessy
Paul Weiss Rifkind Wharton & Garrison LLP
Cecilia Picon & Pedro J. Torres
Carole and Ira Pittelman
Cynthia Hazen Polsky and Leon Polsky
PricewaterhouseCoopers LLP
RBC Capital Markets
Mr. & Mrs. Thomas A. Renyi
Frank Richardson and The Honorable
Kimba M. Wood

The Edward John and Patricia Rosenwald
Foundation
May and Samuel Rudin Family Foundation, Inc.
Susan Rudin
Richard Salomon and Laura Landro
Thomas Schumacher
The Scully Peretsman Foundation
The SJS Charitable Trust
Skadden, Arps, Slate, Meagher & Flom LLP
Michelle Smith
Bonnie and Daniel R. Tisch
Barbara and Donald Tober
Alyce Williams Toonk
Turner Construction Company
Nick & Linda Valenti
Venable LLP
Weil, Gotshal & Manges LLP
Amy & John Weinberg
Suzy and Jack Welch
WilmerHale
Jody Wolfe
Zakaria Family Foundation
Roy J. Zuckerberg & Tara E. Kelleher
Anonymous (3)

\$10,000–\$24,999

Nora Abousteit and Joshua Cooper Ramo
Keith & Peggy Anderson
Joan and Robert Arnow Fund
Rose M. Badgeley Residuary Charitable Trust
The Barker Welfare Foundation
Theodore H. Barth Foundation
Diana and Dick Beattie
Ginette and Joshua Becker
Judy and Howard Berkowitz
Brook and Roger Berlind
Parnassus Foundation/Jane and
Raphael Bernstein
Max and Monique Burger, Hong Kong
J.E. & Z.B. Butler Foundation
Brook and Shawn Byers
Michael and Shelley Carr
The Ralph M. Cestone Foundation
Cisco Systems, Inc.
Joseph M. Cohen
Robyn and Tony Coles
Comcast NBCUniversal
The Gladys Kriebel Delmas Foundation
Antoinette Delruelle and Joshua L. Steiner
Deutsche Bank
Nancy Donohue and Diane Elam
Jane and Michael Eisner and
The Eisner Foundation
The Elkes Foundation
Robert and Anne Essner
Joseph S. Fichera
Barbara J. Fife
First Data
The G & A Foundation, Inc.
Mali Sananikone Gaw and Akarin Gaw
Cynthia Crossen and James Gleick
David Goldhill and Natasha Ozhiganova
Mr. and Mrs. Barry W. Gray
The Harkness Foundation for Dance
Jim and Cecilia Herbert
Joyce Hergenhan
Bonnie B. Himmelman

HLMH, Inc.
Hospital for Special Surgery
Carl Jacobs Foundation
Japanese Chamber of Commerce and Industry
of New York, Inc.
The Joelson Foundation
Mr. and Mrs. Charles B. Johnson
Kauff McGuire & Margolis LLP
Anna-Maria and Stephen Kellen Foundation
William R. Kenan, Jr. Charitable Trust
C.L.C. Kramer Foundation, Inc.
Eric and Sandra Krasnoff
Henna H. Ong and Peter D. Lawrence
Karen and Paul Levy
Leon Levy Foundation
Loeb & Loeb LLP
The Honorable and Mrs. Earle I. Mack
mcgarrybowen
Richard and Ronay Menschel
Bethany and Robert Millard
Linda Mirels
William C. and Susan F. Morris
Dinny and Lester Morse
Henry and Lucy Moses Fund, Inc
Donald R. Mullen
Thomas S. Murphy
Linda and Stuart Nelson
Neuberger Berman Foundation
Nicholson & Galloway, Inc.
David and Melanie Niemiec
Nixon Peabody LLP
Lida Orzeck, Ph.D.
Dina and George Perry
Diana and Joel C. Peterson
Tracey and Robert Pruzan
Susan and Arthur Rebell
Melissa and R. Bruce Rich
Julian Robertson
Susan & Stephen Scherr
Sarah I. Schieffelin Residuary Trust
Lisa and David T. Schiff
Dr. and Mrs. Thomas P. Sculco
The Sequoia Foundation for Achievement in
the Arts and Educations Inc.
William Sherman, trustee for the Murray G.
and Beatrice H. Sherman Charitable Trust
Walter V. Shipley
Greg S. Feldman and Melanie Shorin
Sidley Austin LLP
Klara & Larry Silverstein
Esther Simon Charitable Trust
The John Ben Snow Memorial Trust
Jay and Deanie Stein
Judy and Michael Steinhardt
Jane and James Stern
Gabrielle and Arthur Sulzberger
Sumitomo Corporation of Americas
Pamela & Allen B. Swerdlack
Bruce and Robbi Toll
Alair A. Townsend
In loving memory of Ernest E. Tyrrasch
Uneeda Enterprises
Andrea and Paul Vizcarrondo
The Isak and Rose Weinman Foundation, Inc.
Working Title Films
Barbara and David Zalaznick
Randi Zuckerberg & Brent Tworetzky
Anonymous (8)

\$5,000–\$9,999

Patricia and Alan B. Abramson
Rodney & Michelle Adkins
Paul G. Allen
Linda and Earle Altman
Eleanor S. Applewhaite
Ardian Foundation
Mr. and Mrs. George Asch
Norma K. Asnes
Barclay Damon, LLP
Brett Beldock and John Simoni
Beth and Alan Berkeley
Rhoda Bressler
Deenie and Frank Brosens
Daniel Bross and Robert Cundall
Elizabeth A.R. and Ralph S. Brown, Jr.
Mr. and Mrs. Robert L. Burch, III
Ann L. and Lawrence B. Buttenwieser
Mr. and Mrs. John Calicchio
Tracia Luh and Paul Carpenter
The Kate W. Cassidy Foundation
Shirley Chen
City Protection - Uri Zilkha
Andy Cohen, Bravo
Colgate-Palmolive Company
Consulate General of the Netherlands in New York
Core BTS
The Frederick R. Coudert Foundation
Lucy and Mike Danziger
Peggy and Dick Danziger
Aashish and Dinny Devitre
DMI
The Max and Victoria Dreyfus Foundation, Inc.
Evolv Technology
Peter and Joan Faber
Patti and Eric Fast
Fiona Morgan Fein
Bill Fischer, Fischer Travel
Margaret and Howard Fluhr
Judith A. Garson and Steven N. Rappaport
Barbara and Peter Georgescu
Russell Granet and David Beach
Dr. and Mrs. Victor Grann
The Grodzins Fund
Allen and Deborah Grubman
Michael Halperin
Gail and Walter Harris
Francena T. Harrison Foundation Trust
Nicholas P. Haslett
Michele Hirshman and Russell Pearce
HSBC Bank, N. A.
IBM
Jill and Ken Iscol
Karen Hagberg & Mark Jackson
Linda Janklow
Dave & Suzi Johnson
Joseph Hage Aaronson LLC
Kelco Construction
Stuart and Isabel Kessler
Mr. Peter Kim and Ms. Juliette Cho
Howard and Shelly Kivell
Dr. Barbara Kravitz
Larry Leeds
Jonathan E. Lehman
Ellen and Dr. Richard U. Levine
Arthur L. Loeb

Crystal McCrary and Raymond J. McGuire
Joyce F. Menschel
Robert B. Menschel and Janet Wallach
Carolyn and Gene Mercy
Paul Montrone and Perspecta Trust
The Naggars
Needham Foundation Trust
New England Foundation for the Arts
Stanley Newman and Dr. Brian Rosenthal
Charles John O'Byrne
Martin and Suzi Oppenheimer
Palladium Window Solutions
Liza Parker and Frank Migliorelli
Michael Park and Sarah Seo
The Laura Pels International Foundation
for Theater
Abraham Perlman Foundation
Tamar C. Podell
Judy and Jim Pohlman
Lynn Povich and Stephen Shepard
Robert A. Press, M.D.
Rajika and Anupam Puri
Paula and Ira M. Resnick
Denise Rich
Jane and Paul Rittmaster
Liz Robbins
James Robinson III
Jonathan F. P. and Diana Rose
Emilia Saint-Amand
Joan & Jack Saltz
Paul H. Scarbrough, Akustiks, LLC
Pam and Scott Schafler
Jordan B. Seaman
Shiv Sethi
Anna Marie and Robert F. Shapiro
Jaar-mel and Peter Sloane
Grant and Jacqui Smith
Mr. and Mrs. Thomas W. Smith
Susan and Peter Solomon
Barbaralee Diamonstein Spielvogel and
Ambassador Carl Spielvogel
Astrid Spina
Stairway Fund
Nancy and Burton Staniar
Joan and Michael Steinberg
Dianne and David Stern
Christopher Stewart
The Leila and Mickey Straus Family
Charitable Trust
Scott & Lisa Stuart
Maryann Sudo Baxter
Lita Tandon
Tiger Baron Foundation
Lizzie and Jonathan Tisch
Michelle Toll and William O'Flanagan
Wachtell, Lipton, Rosen & Katz
Mary J. Wallach
Barbara Washkowitz
Lynne and David B. Weinberg
The Weinger Foundation, Inc.
Mr. and Mrs. James O. Welch, Jr.
Anita and Byron Wien
Lindsay Wilczynski
Wilson Elser Moskowitz Edelman & Dicker LLP
Mr. and Mrs. James D. Wolfensohn
Anonymous (5)

Annual Supporters

\$2,500–\$4,999

Audrey and Sargent Aborn
Gloria and Bert Abrams
Joseph and Jacqueline Aguanno
AME, INC.
Stephanie Ansin & Spencer Stewart
Karen and Gregory Arenson
Ariel Investments
Page Ashley
Martin and Rhoda Barr
William Barry - Sompo International Insurance
Kathy & Gene Bernstein
Bernstein Redo PC
Lisa & Mark Bezos
Susan and Matthew Blank
Madeline and Alan Blinder
Robert Brenner
Rita and Charles Bronfman
Maggie and Don Buchwald
Marian Burke
Jamie and David Caro
Marcy Carsey
Lisa and Dick Cashin
Una Chae & Jonathan Zucker
Betsy Cohn
The Simon and Eve Colin Foundation
Joyce B. Cowin
Jeffrey and Caren Cox
Gordon J. Davis and Peggy Cooper Davis
Scott M. Delman
Jenny Brorsen and Rich DeMartini
Robert C. Dinerstein
Domitilia M. dos Santos
Les Duffy
Lisa and Sandy Ehrenkranz
Ciara Burnham/Evercore Partners
Seymour Falik and Loraine Liebmann
Patricia Falkenberg
Kenneth and Diane Feinberg
Caryl and Kenneth Field
Linda and Gregory Fischbach
Nancy Fisher and Marc Kirschner
Fisher Dachs Associates
Jeanne Donovan Fisher
Joanne and Ellen Flanagan
Laura Gurwin Flug
Andrew Frackman and Emily Braun
Barbara A. Gally
Bruce Gelb
Melissa M. Gibbs
Ms. Lynn Gilbert
Golden K-9 Protective Svc.
Tracie Golding Gerson
Terina Golfinos and Robert Lisi
Barbara Freid Gottesman
Ilene Gotts / Wachtell, Lipton, Rosen & Katz
Barbara and Harry E. Gould Jr.
Lenore and Edward Grabowski
Paula S. Greenman
Marilee K. Greenwald
Joan and Charles Gross
Dr. and Mrs. Sanford Grossman
Jennifer & Bud Gruenberg
Mrs. John (Susan) Gutfreund
Jill and Martin Handelsman
Lynne and Harold Handler

J. Ira and Nicki Harris Family Foundation
Charles Goren and Hazan Family Foundation,
Lisa and Tom Hazen, Trustees
Hermione Foundation, Laura J. Sloate Trustee
Ian and Lea Highet
Paul and Josefin Hilal
Hitz Foundation
Joan Holmes
In memory of Alfred R. Horan
Ruth W. Houghton
Chris Stern Hyman
Dr. Betty S. Iu
Japan Foundation
Alexandra Krofta Jones
Marnee and Eric Kaltman
John Kander
Robert and Debra Kasirer
Gene Kaufman and Terry Eder-Kaufman
Kathy Keneally
Mr. and Mrs. Harold Kingsberg
Dr. and Mrs. Samuel Klagsbrun
The Klein Family Foundation
Judi and Douglas Krupp
Jill and Barry Lafer
Nicole & Fernand Lamesch
Leonard & Judy Lauder Fund
Alain and Helene LeBleu
Sara Lee and Axel Schupf
Carol Leibenson
Sahra Lese
Amy and Frank Linde
Arthur and Susan B. Lindenauer
Dorothy Litwin Brief and Donald Brief
Yang Lu & Grace Gui
Duncan & Nancy MacMillan
John Madden
Barbara and J. Robert Mann, Jr.
Bernice Manocherian
Jody G. Mansbach
Judith and Michael Margulies
Judith and David Marrus
John E. McAuliffe
Shelley Mendell
Susan Merinoff
Ellen and Lee Metzendorf
Edward & Sandra Meyer Foundation
Marti Meyerson & Jamie Hooper
Mid Atlantic Arts Foundation
William R. Miller
Lewis A. Miller
Marianne & Steven Mills
David Monn
Evangeline Morphos & Alan Brinkley
Prue Mortimer
Charlotte Moss & Barry Friedberg
MSA Security
Kathryn Myers
National Basketball Association
Nippon Steel & Sumitomo Metal U.S.A., Inc
Beth and Michael Nochomovitz
Robert C. and Candice E. Nolan
Barbara & Barry Novick
The Gideon and Claudia Oberweger
Foundation
Peter and Sarah O'Hagan
Charles and Jean Osgood
Beth Ostrow

Betsy and Justin Painter
Jean and Kent Papsun
Robin and Bob Paulson
The Peckham Family Foundation
Liz and Jeff Peek
Barbara A. Pelson
Ann and Hollis Petersen
Dr. Sally Peterson
In Loving Memory of Nancy Pfifferling
Mr. Mark Pick
Marnie S. Pillsbury
Catherine A. Rein
The Related Companies LP
Rems Family
The Karl F. Reuling Fund
Philip W. Riskin Charitable Foundation, Inc.
Gail and Michael Rogers
Daniel and Joanna S. Rose
Alexandra Munroe & Robert Rosenkranz,
The Rosenkranz Foundation
Nina Rosenwald
Janet C. Ross
Deborah and Chuck Royce
Reed Rubin and Jane Gregory Rubin
Mr. and Mrs. Anthony W. Ruggiero
Lynda and Robert Safron
The Sagner Family Foundation
Lauren and Deeb Salem
Judy and Dirk Salz
Ms. Gail Robin Sarner
The Irwin S. Scherzer Foundation Inc.
Robert Schoenthal & Diane Silberstein
Jonathan M. Schorr
Edmund and Elaine Schroeder
Stephen A. Schwarzman
Emily Segal and Andrew Ellis
The Helena Segy Foundation
Nadine Shaoul and Mark Schonberger
Sam and Rachel Shikiar
Susan Stein Shiva Foundation
Mrs. Constantine Sidamon-Eristoff
Adrienne and William Silver
Herbert and Arline Slepoy Charitable
Foundation
Joan and Joel Smilow
Andrew Malik & Elizabeth Smith-Malik
Carla Solomon and Antonio Magliocco, Jr.
Annaliese Soros
John Sparling, Esq.
Dr. Eric J. Spicer and Christiane Vanderlinden
Janet and Gil Spitzer
Stephen Stamas
Lauren and Scott Stelzer
Aaron and Betty Lee Stern Foundation
Bonnie and Tom Strauss
In memory of Mrs. Lee Strong
Gloria and Philip Talkow
Jay H. Tanenbaum
Ellen and Bill Taubman
Thornton Tomasetti, Inc.
Lee L. Traub
Frank D. Visceglia, Jr.
Enzo Viscusi
Mary Ellen and Karl von der Heyden
Heather & Bill Vratots
David Wackman
Candace and Jonathan Wainwright

Lana and Justin Walder
Elaine and Alan Weiler
Sue Ann Weinberg
Judy and Josh Weston
Mrs. Carolyn Wiener
Susan and Benjamin Winter
Richard and Lisa Witten
Lee Wolf and Jordan Cohen
Ira Wolfson
Ellen and Joseph Wright
Elaine G. Yaffe
W. Kevin Zhu
Anonymous (12)

\$1,000–\$2,499

3.1 Phillip Lim
Hussain Abbas
Mr. Omar Abboud
Mr. Hector Abdelnour
George and Pamela Ackert
Mr. and Mrs. Alan Alda
In Memory of E. Nelson & Betty L. Asiel
Aspro Plumbing Inc.
Mr. Michael Audet
Charles Ayres
Abigail and Joseph Baratta
Kara and Dov Barnett
Brent T. Barnhart - UBS Private Wealth
Management
Mr. Phillip Basil
Dale and Max Berger
Mr. and Mrs. T.G. Berk
In Memory of Arthur M. Bernhardt
Ms. Anna Bitton
Leon Baer Borstein, Esq.
Mike and Renette Brady
Lotte and Ludwig Bravmann
Josephine Brown
Mr. Arri Burrows
Mr. Yanni Burton and Mr. Jordan Palmer
Ms. Golda Calonge
Ms. Jessica Cardenas
Graydon and Anna Carter
Ms. Avna Cassinelli
Ms. Laura Cawley
Joyce Chelberg
Lola L. Chlupsa
Mary Cirillo-Goldberg
Mr. Benjamin Clapp and Ms. Caroline Howe
Mr. Angelo Coelho
Ms. Mercy Cohen
Suzanne and Jeff Cohen
Donald Comras
Lori Conkling
Ms. Michelle Copelman
Arika and Jon Couchman
Steve and Connie Delehanty
Vicky and Thomas DiDonato
Valerie and Charles Diker
Mr. & Mrs. Harold Domnitch
Mr. Alexander Donnelly
Miriam and David Donoho
Mr. Andrew Duchi
Mr. and Mrs. Oded Edan
Ms. Launa Eddy
Ms. Patricia S. Eigen

Nora Ephron & Nicholas Pileggi Foundation
Mr. and Mrs. Yehuda Even-Zohar
Mr. and Mrs. Leroy Fadem
Mr. William Finnegan
Mr. Anton Finucane
The Flynn Family
Emily Abigail Friedman
Matthew J. Friedman
Ms. Amanda Gallagher
Gerstner Family Foundation
Carol Gertz
Peter Gethers
Joseph D. Gioe
Elizabeth F. Goodstein
Michael D. Granoff
Mr. Lawrence Grant and Mrs. Michele Grant
Ms. Katherine Grehl
Susan Griffith and David Neill
Terry and Michael Groll
Peter Gruenberger and Carin Lamm
Louise Grunwald
GSI Systems, Inc.
Jan M. Guifarro
Ms. Kelly Hallinan
Beverly L. Hamilton
Trish Hamlin
Ms. Alexandra Harper
Ms. Florence Haseler
Buck Henry Charitable Fund
Horacio and Julia Herzberg
Dr. and Mrs. Charles Hesdorffer
Hightech Solutions NYC, LLC
Ryan and Sara Hinkle
Riva Horwitz & Josh Easterly
Hotta Liesenberg Satio LLP
Mr. Roger Huang
Jake Huff
Tracey and Craig Huff
Richard and Sharon Hurowitz
Dr. Jin Hyun
Jean and Maurice Jacobs
Raphael G. Jacobs
Mr. Spencer Jaffe
Surjit K. Jairath
Ms. Brooke James
David Jaquet
Monica Jasty
Hilda and Christopher Jones
Jones Day
Jonah Katz
Michael Katz
Ms. Yukako Kawata
Judge Amalya L. Kearse
Mrs. Ralph W. Kern
Ms. Lisa Khan
Mr. Boris Khentov
Mr. Hank Klehm
Jamie Klein
June H. Koizumi
Mr. and Mrs. George Krupp
Dr. Edward Kwak & Ji Park Kwak
Carole and Frank Lalli
Douglas Lancet and Adam Sikora
Madeleine Lebwohl
Mr. Brian Lee
Yan & Daipan Lee

Almudena and Pablo Legorreta
Cindy & Richard Leibovitch
Frank & Patricia Lenti
Ms. Kara Lentz
Ms. Elissa Li
Suzanne Lim MD
Timothy Cooper Lin
Robert Losada
Ms. Ava Lubell
Dr. Andrew T. Lupo, Jr. & Mrs. Andrea S. Lupo
Sondra and David S. Mack
Mr. Varun Madiath
Tony Magro
Tina Livanos and Alexandros Makrygeorgos
Stephen C. Malamud, MD
Elissa and Hal Mandel
Ms. Stefanie Manna
Ms. Erica Manoff
Kristine G. Manoukian
Margaret P. Mautner
Ms. Rebecca McAfee
Camille and Robert McDuffie Family Fund
Gilda & John P. McGarry, Jr.
Joan McPhee
Gerard M. Meistrell
Marie and Joe Melone
Dr. Naomi Mendelsohn
The Janis and Alan Menken Foundation
Mr. and Mrs. Peter Milligan
Moelis & Company
Harold and Mary Ann Moore
Mr. Paul Mourino
Margo Nederlander
Debby & Joel Neiterman
Angie Nguyen and Sanford Weisburst
Colleen Noall
The Par Group
James R. Parks
Laura Pels
Evan Picoult
Sal Piscopo
Ms. Emma Podlesnik
Mia Poppe, Esq.
J.R. Randall
Lisa Raylesberg
Mr. and Mrs. Ariel Recanati
Dr. and Mrs. James S. Reibel
Nate Reicher
Ms. Charlotte Renfield-Miller
Mr. David Robbins
Ms. Alicia Robinson
Nancy Rose
Lesley & Ted Rosenthal
Susan and Jon Rotenstreich
Anne and Noah Roy
Judith O. and Robert E. Rubin
Ms. Christina Russell
Michael and Donna Sasso
Kate Schlesinger
Sanford J. Schlesinger and Lianne Lazetera
Rudy and Elaine Schott
Ms. Cagla Gamze Seten
Ted and Mary Jo Shen
Jenny Shotwell
Jack and Shirley Silver
Ms. Kelly Sinn

Annual Supporters

The Alan B. Slifka Foundation
Amir and Manisha Sobhraj
Marissa Solomon
Michael and Claudia Spies
Mr. Michael Spinelli
Mr. Alexander Stamatiadis
Melissa and Neil St. Clair
Lynn G. Straus
Allison and Stephen Sullens
Mr. Salvatore Takoushian
Eduardo Tamraz
Edward T. Tokar
Transamerica
Phyllis Tribble
Hatsuko Ueno
Nisha Venkataraman
Vorhoff Family
Elle S. Wang
Judy and Lee Wasserman
George and Sal Wen-Capolarello
Peg and Gary Wendlandt
Mitch Wergiles, Premier Supplies
Naida S. Wharton Foundation
Elliot & Nancy Wolk
Ms. Nekeshia Woods
Robert and Alicia Wyckoff
Xpress Termite & Pest Control Corp.
Ms. Lynn Yen
Zelnick/Belzberg Charitable Trust
Anonymous (20)

Lincoln Center Official Partners

Nespresso is the Official Coffee
of Lincoln Center
NewYork-Presbyterian is the Official Hospital
of Lincoln Center

NextGen Fund

Lincoln Center thanks its NextGen Fund
members for supporting new audience
development and free programming.

Katherine Farley and Jerry Speyer
Hearst
Mr. and Mrs. John B. Hess
Elliot and Roslyn Jaffe
Stephen M. Ross
James Dinan and Elizabeth Miller
Anne and Joel Ehrenkranz
Robert and Gillian Steel
Sandra and Tony Tamer
Laurie M. Tisch Illumination Fund
Cheryl and Blair Effron
Meg and Bennett Goodman
Cheryl and Philip Milstein
Hon. Stephen C. Robinson

Planned Giving: The Bravo Society

Lincoln Center greatly appreciates the
generosity and foresight of those individuals
who have included a provision for Lincoln
Center in their estate planning.

Ms. Claudia Adams
Mr. Robert Ardini
Ms. Gunilla Berlin
In memory of Katherine T. Bidwell
Mr. Paul Bowley
Carol and Robert Braun
Dr. and Mrs. Alexander Broden
Ms. Hillary Brown
Mr. David G. Clough
Ms. Diane M. Coffey
Mr. Charles Edward Cole
Louise and Lewis B. Cullman
Connie and Stephen J. Delehanty
Ms. Jamie deRoy
Trish and Stephen W. Fillo
Evelyn M. Finklestein, Esq.
Stuart M. Fischman, Esq.
Ms. Lorraine Fox
Mr. Chaim Freiberg
Ms. Edith Friedman
Dr. Marjorie and Roy Furman
Mrs. Barbara Gottesman
Ms. Sharon J. Handler
Mr. John B. Haney
Ms. Allison B. Hart
In memory of Dr. Jean Pierre Hartman
by his wife Eva
Mr. Heinz K. Hofmeister
Mrs. Ruth W. Houghton
Mrs. Jane B. Jacobs
Dr. Peter H. Judd
Ms. Ginger D. Karren
Dr. Sivia Kaye
Stuart and Isabel Kessler
Dr. Thomas C. King
Ms. Francine S. Kittredge
Mr. John D. Knoernschild
Charlotte and I. Stanley Kriegel
Ms. Mary E. Langford
In memory of Evelyn H. Lauder
Ms. Linda Leven
Mr. Zachary Ross London
Ms. Florence Lotrowski
Mrs. Virginia Lyon
Mrs. Flora Major
Mr. and Mrs. Peter L. Malkin
Ms. Mahnaz Maqsudi
Mr. and Mrs. Anthony D. Marshall
Dr. Anne M. Morris
Mr. Stanley Newman
Alan A. and Barbara Nicoll
Suzanne and Martin Oppenheimer
Gerri and Lester Pollack
Ms. Dina Powell
Mr. Desmond Printz
Ms. Eleanor X. Pripadcheff
Lourdes and Anthony Proto
Mr. Francis H. Rasmus, Jr.
Arlene and Bernard Richards
The Honorable Frederick W. Richmond

Mr. Martin Riskin
Ms. Roberta Robins
Ms. Susan Robinson
Ms. Rama Rodvien
Ms. Gloria Roma
Ms. Evelyn Ronell
Ms. Joyce Rosen
In memory of Sheila Rosen
Judy and Dirk Salz
Mr. Michael L. Samuels
Dr. Jayne Schneider-Rynar
Mr. John Seaman
Dr. Sidney Shanker
Ms. Arlene Shuler
Shirley and Jack Silver
Ms. Christine E. Sohn
Christiane Vanderlinden and Dr. Eric Spicer
Ms. Barbara Stahl
Mr. Philip F. Stattel
Sonya and Leo Tick
In loving memory of Ernest E. Tyrrasch
Ms. Josephine Ueno
Ann and Thomas Unterberg
Mr. Marshall M. Weinberg
Ms. Rose Lynn Weinstein
Judith and Stephen B. Weinstein
Mrs. Sarah Weisberg
Mrs. Mildred Weissman
In Memory of Rowenna Wight White
Dr. Caroline E. Rubinstein and Phillip M. Winegar
Ms. Marilyn M. Wolf
Ms. Carol Zuckerman

We also thank the members of the Bravo
Society who wish to remain anonymous.

Government

Lincoln Center is deeply grateful to
the government agencies and elected
representatives listed below for their support.

The Honorable Bill de Blasio,
Mayor of the City of New York
The Honorable Gale A. Brewer,
Manhattan Borough President
The Honorable Corey Johnson, Speaker,
New York City Council
The Honorable Diana Ayala,
New York City Council
The Honorable Fernando Cabrera,
New York City Council
The Honorable Ben Kallos,
New York City Council
The Honorable Peter Koo,
New York City Council
The Honorable Keith Powers,
New York City Council
The Honorable Helen Rosenthal,
New York City Council
The Honorable Ritchie Torres,
New York City Council
The Honorable Paul Vallone,
New York City Council
The Honorable Jimmy Van Bramer,
New York City Council
The Honorable Alicia Glen,
Deputy Mayor for Housing and Economic
Development
New York City Department of Buildings,
Rick Chandler, Commissioner
New York City Department of Cultural Affairs,
Tom Finkelpearl, Commissioner
New York City Department of Education,
Richard A. Carranza, Chancellor
New York City Fire Department,
Daniel A. Nigro, Commissioner
New York City Department of Parks and
Recreation, Mitchell J. Silver, Commissioner
New York City Planning Commission,
Marisa Lago, Chair
New York City Police Department,
James P. O’Neill, Commissioner
New York City Department of Transportation,
Polly Trottenberg, Commissioner
The Honorable Andrew M. Cuomo,
Governor of New York State
The Honorable Linda B. Rosenthal,
New York State Assembly
New York State Council on the Arts,
Katherine Nicholls, Chair
The Honorable Charles E. Schumer,
United States Senate
The Honorable Kirsten E. Gillibrand,
United States Senate
The Honorable Jerrold L. Nadler,
United States Congress
National Endowment for the Arts,
Mary Anne Carter, Acting Chair

Business Advisory Council

The Business Advisory Council provides key
strategic insights on a number of the most
challenging issues facing Lincoln Center and
the cultural fabric of New York City.

Katherine Farley (Co-Chair)
John B. Hess (Co-Chair)
Steven R. Swartz (Co-Chair)
Robert J. Alexander
Gregory Bedrosian
Cathleen P. Black
Aryeh B. Bourkoff
Russell L. Carson
Ravenel Curry
Thomas J. DeRosa
Stephen R. Howe, Jr.
Richard M. Jeanneret
Brad S. Karp
Charles Kaye
Howard Marks
Thomas K. Montag
Indra Nooyi
Charles Phillips
Alan D. Schwartz
Tad Smith
Kevin Ulrich
Brad Wechsler

Global Council

Members of the Lincoln Center Global
Council act as ambassadors for Lincoln Center
in their home countries, provide counsel
to Lincoln Center leadership, and enjoy the
highest level of exclusive benefits and access
at Lincoln Center.

Chandrika Tandon (Chair)
Ajay Banga
Hari Bhartia
Gautam Kumra
Anand Mahindra
José Roberto Marinho
Kiran Mazumdar-Shaw
Renata de Camargo Nascimento
Dinesh Paliwal
Abhishek Poddar
Sophie Xiaohong Qi
Gabriela Perez Rocchietti
Catalina Saieh
Neerja Sethi
Nina Sun
Frank Tang
Gustavo Vollmer
Lan Yang
Siddharth Yog

Lincoln Center Counsels’ Council

Lincoln Center is extremely grateful for the
pro bono legal services provided by the
members of the following law firms and
corporate legal departments.

ASCAP
BLJohnson Law PLLC
Barclay Damon, LLP
Bernstein Redo, P.C.
Cahill Gordon & Reindell LLP
Covington & Burling LLP
Davidoff Hutcher & Citron LLP
Davis Polk & Wardwell LLP
DLA Piper
Drinker Biddle & Reath LLP
Gibson, Dunn & Crutcher LLP
Goetz Fitzgerald LLP
Ilene Gotts / Watchell, Lipton, Rosen & Katz
Jenner & Block LLP
Kauff McGuire & Margolis LLP
Loeb & Loeb LLP
Mound Cotton Wollan & Greengrass LLP
Nixon Peabody LLP
Paul, Weiss, Rifind, Wharton & Garrison LLP
Pepper Hamilton LLP
Proskauer Rose LLP
Sidley Austin LLP
Skadden, Arps, Slate, Meagher & Flom LLP
Venable LLP
Walsh Pizzi O’Reilly Falanga LLP
Weil, Gotshal & Manges, LLP
Wildes & Weinberg, P.C.
Willkie Farr & Gallagher LLP

Our Financials

Balance Sheet—Consolidated

June 30, 2018 and 2017 (\$000)

ASSETS	2018	2017
Cash and cash equivalents	\$9,634	\$12,435
Restricted cash	15,899	29,297
Accounts and investment income receivable	14,773	16,136
Contributions and grants receivable, net	79,416	108,401
Prepaid expenses, inventory, and other assets	8,833	10,272
Investments	258,862	248,841
Fixed assets, net	349,613	360,785
Total assets	\$737,030	\$786,167
LIABILITIES		
Accounts payable and accrued expenses	\$21,010	\$16,704
Fair value of interest rate swaps	36,837	48,170
Deferred revenue	18,753	20,846
Borrowings under line of credit	-	25,000
Long term debt	251,707	253,276
Total liabilities	\$328,307	\$363,996
NET ASSETS		
Unrestricted:		
General operating	\$10,760	\$10,611
Board designated	115,643	112,260
Redevelopment and other physical capital	70,996	88,178
Total unrestricted	\$197,399	\$211,049
Temporarily restricted	114,899	113,503
Permanently restricted	96,425	97,619
Total net assets	\$408,723	\$422,171
Total liabilities and net assets	\$737,030	\$786,167

Lincoln Center for the Performing Arts, Inc. is a nonprofit organization exempt from income tax under Section 501 (c) (3) of the Internal Revenue Code.

The Balance Sheet and Statement of Activities are summarized here. A complete copy of Lincoln Center's consolidated audited financial statements may be requested by calling 212.875.5250.

Statement of Activities—Consolidated

for the years ended June 30, 2018 and 2017 (\$000)

OPERATING SUPPORT AND REVENUE	2018	2017
Contributions and special events, net	\$31,330	\$27,455
Investment return	4,944	4,908
Box office and other program service revenue	12,533	11,276
Facilities services and other program service revenue	62,471	66,523
Other income	3,602	3,502
Net assets released from restrictions	20,827	23,188
Total general operating revenue	\$135,707	\$136,852
OPERATING EXPENSES		
Program services:		
Performance presentations	\$22,676	\$22,498
Media development (Live From Lincoln Center)	4,537	5,183
Education and outreach	9,823	9,889
Facilities management and services	66,651	70,345
Visitor and patron services	1,604	1,480
New ventures and special projects	779	2,280
Total program services	\$106,070	\$111,675
Supporting services:		
Management and general	\$25,203	\$21,992
Fundraising	7,179	7,203
Total supporting services	\$32,382	\$29,195
Total general operating expenses	\$138,452	\$140,870
Change in operating net assets before transfers	(\$2,745)	(\$4,018)
Transfers	2,894	4,109
EXCESS OF SUPPORT AND OPERATING REVENUE OVER EXPENSES	\$149	\$91
OTHER CHANGES IN UNRESTRICTED NET ASSETS		
Board designated contributions and other income	\$4,014	\$4,207
Board designated investment return	5,329	10,696
Net realized and unrealized gain on swap agreements	11,332	18,317
Redevelopment and other physical plant income	1,347	446
Net assets released from restrictions	760	3,676
Depreciation expense	(16,065)	(14,505)
Redevelopment and other physical plant expense	(17,622)	(16,202)
Transfers	(2,894)	(4,109)
Total change in unrestricted net assets	(\$13,650)	\$2,617
CHANGES IN RESTRICTED NET ASSETS		
Restricted contributions and grants	\$15,002	\$42,328
Investment return	12,787	18,587
Reserve against restricted pledges	(6,000)	-
Net assets released from restrictions	(21,587)	(26,864)
Total changes in restricted net assets	\$202	\$34,051
TOTAL CHANGES IN NET ASSETS	(\$13,448)	\$36,668
Net assets at beginning of the year	422,171	385,503
Net assets at end of the year	\$408,723	\$422,171

Lincoln Center Board of Directors

CHAIR

Katherine Farley

ACTING PRESIDENT

Russell Granet

VICE CHAIRS

Adrienne Arsht
Chairman Emerita
TotalBank

Richard K. DeScherer
Chief Legal & Compliance Officer
Bloomberg L.P.

Joel S. Ehrenkranz
Founding Partner
Ehrenkranz Partners L.P.

Roy Furman
Vice Chairman
Jefferies LLC

John B. Hess
Chief Executive Officer
Hess Corporation

Bruce Kovner
Chairman
CAM Capital

Philip L. Milstein
Principal
Ogden CAP Properties

Laurie M. Tisch
President
Laurie M. Tisch Illumination Fund

Ann Ziff

TREASURER

Blair W. Effron
Founding Partner
Centerview Partners LLC

DIRECTORS

Ronnie Ackman

Robert Appel
President
Appel Associates

Sarah Arison
President
Arison Arts Foundation

Jody Gottfried Arnhold
Founder
Dance Education Laboratory (DEL) 92Y

Joseph Y. Bae
Co-President and Co-COO
KKR

Christina Baker

Keith T. Banks
Vice Chairman of Global Wealth
& Investment Management
Head of Investment Solutions Group
Bank of America

Ronald N. Beck
Advisory Partner
Oaktree Capital Management, LP

Renée Belfer

Frank A. Bennack, Jr.
Executive Vice Chairman
Chairman of the Executive Committee
Former CEO
Hearst

Richard S. Braddock

Jeffrey C. Campbell
Executive Vice President and CFO
American Express

Judith-Ann Corrente
President & CEO
Metropolitan Opera

James G. Dinan
Chairman, Co-Chief Executive Officer
and Managing Partner
York Capital Management

Beth Dozoretz
President
Dozoretz Family Foundation

Harold Ford

William E. Ford
Chief Executive Officer
General Atlantic LLC

Bart Friedman
Senior Counsel
Cahill Gordon & Reindel, LLP

Jeffrey L. Gates
Managing Partner
Gates Capital Management

David Geffen

Bennett J. Goodman
Co-Founder and Senior Managing Director
GSO Capital Partners

Efraim Grinberg
Chairman & CEO
Movado Group, Inc.

Mimi Haas
President
Mimi and Peter Haas Fund

Ronald G. Harrington
Philanthropist and Entrepreneur

Gerald L. Hassell
Retired Chairman and CEO
BNY Mellon

Rita E. Hauser
President
The Hauser Foundation, Inc.

Jim Herbert
Chairman
and Chief Executive Officer (Founding)
First Republic Bank

Elinor Hoover
Managing Director
Citigroup Global Markets Inc.

Susan S. Huang
Global Head of Investment Banking,
Vice Chairman
Morgan Stanley

David A. Hunt
President and Chief Executive Officer
PGIM, The Global Investment Business
of Prudential

Elliot S. Jaffe
Chairman Emeritus & Co-Founder
Ascena Retail Group (Dress Barn)

Sheryl Drangel Kaye
President
JCC Manhattan

Somesh Khanna
Senior Partner
McKinsey & Company, Inc.

Shelly Lazarus
Chairman Emeritus
Ogilvy

Betty Levin
President
Corporate Art Directions

Bryan Lourd
Managing Director
Creative Artists Agency

Scott D. Malkin
Chairman
Value Retail PLC

Peter W. May
President and Founding Partner
Trian Partners

William R. Miller, CBE
Former Vice Chairman
Bristol-Myers Squibb

Eric Mindich
Founder & Chief Executive Officer
Eton Park Capital Management

William C. Morris
Chairman of the Executive Committee
The Metropolitan Opera Association

Anna Nikolayevsky
CIO
Axel Capital Management

Jonelle Procope
President & CEO
Apollo Theater

Julian Robertson
Chairman
Tiger Management L.L.C

Hon. Stephen C. Robinson
Partner
Skadden, Arps, Slate, Meagher & Flom LLP

Stephen M. Ross
Chairman and Founder
Related Companies

David M. Rubenstein
Co-Founder and Co-Executive Chairman
The Carlyle Group

Oscar S. Schafer
Chairman
Rivulet Capital, LLC

Ralph Schlosstein
President & CEO
Evercore

Thomas Schumacher
President & Producer
Disney Theatrical Group

Esta Eiger Stecher
Managing Director
The Goldman Sachs Group, Inc.

Robert K. Steel
Chief Executive Officer
Perella Weinberg Partners

Gayfryd Steinberg

Steven R. Swartz
President and Chief Executive Officer
Hearst

Tony Tamer
Founder and Co-CEO
H.I.G. Capital, LLC

Chandrika K. Tandon
Chairman
Tandon Capital Associates

Ann Tenenbaum
Co-President
MTheory

John A. Thain

Ann Unterberg
Chairman
Lincoln Center Education

Barbara Vogelstein
Chairman
The School of American Ballet

John E. Waldron
Global Co-Head Investment Banking
Goldman Sachs

Christopher J. Williams
Chairman and Chief Executive Officer
The Williams Capital Group, L.P.

John Wren
Chairman and CEO
Omnicom Group

Clara Wu Tsai
Joe and Clara Tsai Foundation

Katsurao Yoshimori
President and CEO
Mitsui & Co. (U.S.A.), Inc.

Randi Zuckerberg
Founder and CEO
Zuckerberg Media

EX OFFICIO

Hon. Bill de Blasio
The Mayor of the City of New York

Barry H. Berke
Mayoral Designee

Hon. Corey Johnson
Speaker
New York City Council

Frank Carucci
Speaker's Designee

Hon. Thomas Finkelpearl
Commissioner
New York City Department of Cultural
Affairs

Hon. Mitchell Silver
Commissioner
New York City Department of Parks
and Recreation

CHAIRMEN EMERITI

Amyas Ames (1906–2000)

Frank A. Bennack, Jr.

Bruce Crawford

John D. Rockefeller 3rd (1906–1978)

Martin E. Segal (1916–2012)

Beverly Sills (1929–2007)

George Weissman (1919–2009)

DIRECTORS EMERITI CO-CHAIRS

Hon. William H. Donaldson

Peter L. Malkin

DIRECTORS EMERITI

Mrs. James A. Block

Diane M. Coffey

David A. Coulter

Bruce Crawford

Harvey Golub

Audrey Butvay Gruss

Paul B. Guenther

William B. Harrison, Jr.

Ruth W. Houghton

David H. Koch

Peter S. Kraus

June Noble Larkin

Thomas H. Lee

Martin J. Oppenheimer

Thomas A. Renyi

Jim Rosenthal

Susan Rudin

Walter V. Shipley

Howard Solomon

Daisy M. Soros

Hon. Carl Spielvogel

Stephen Stamas

Alair A. Townsend

As of October 16, 2018

Lincoln Center Executive Cabinet

Russell Granet
Acting President

Robert Cundall
Executive Vice President
Chief Financial Officer

Lauren Ezrol Klein
Executive Vice President
General Counsel
& Corporate Secretary

Jane Moss
Ehrenkranz Artistic Director

Liza Parker
Chief Operating Officer

Tamar C. Podell
Executive Vice President
Chief Development Officer

Special thanks to the talented and committed employees of Lincoln Center for the Performing Arts.

Rheanna Abbott
Shawn Adams
Brett Adler
Michelle Akapnitis
Frank Alario Jr.
Mohammed Alislam
Sharif Allen
Jose Alvarez
Pratyush Amatya
Myles Ambrose
Courtney Anderson
Valentin Andon
Luis Andrade
Victoria Andujar
Cajetan Anthony
Jervin Archibald
Gabriel Ash
Kenneth Atkinson
Andrew Aulletti
Adessii Austin
Lewis Baldwin
Derrick Beale
Walker Beard
Larry Becker
Said Bekkaoui
Tasha Belgrave
Bryant Belliard
Orlando Belloso
Viviana Benitez
Susan Bick
Kelly Bodami
Gilbert Bogen
Misael Bonilla
Peggy Borkowski
Mario Borrero
Beethoven Boucicaut
Amanda Brandes
Perry Bristow
Lynn Brown
Marquise Brown
Nakia Brown
Patrick Brown
Keorebekah Bun
Eric Burgos
Kevin Burke
Roberto Buscemi
Ronald Busch
Mary Beth Cadmus
Gillian Campbell
Caroline Capell
Mary Caraccioli
Ramiro Cardona
Carlos Carey
John Casavant
Martha Castillo
Rafael Castro
Eduardo Catala
Orlando Cedres
Charles Cermele
Trudy Chan
Douglas Chang
Sara Chang
Douglas Charles
Cara Charlton

Jean Chery
Sonia Chou
Richard Christopher
Delroy Clayton
Sid Collazo
Joseph Connaghan
Barbara Bell Cook
Mark Council
Norman Cuevas
Julie D'Andrea
Moheni Dabie
Pangis Dalmaneras
Darrick Dalton
Damion Darien
Sandra Dastagirzada
Richard De Marinis
Gerald DeCastro
Arianna DeLeo
Peter DeSouza
Steven DeStefano
Michael Defroda
Edwin Devine
Anna Diaz
Margarita Diaz
George Dilthey
Elisa Disla
Leo Distefano
Daniel Doherty
Christine Donato
Brienne Dougherty
Nashon Dubose
Meera Dugal
Amanda Dunn
Jordan Echavez
Rasheem Edgar
Curtis Edwards
Andrew Elsesser
Craig Eozzo
Emma Epstein
Christian Espinal
Lizbeth Estevez
Randall Etheredge
Angoy Evelyn
Fedel Facey
Fairuz Farhat
Mikhail Faynzilbert
Felipe Febles
Jose Felipe
Maria Fernandez
Frank Ferrante
Leonard Ferrera
Harry Fisher
Joseph Fisher
Peter Flamm
Jennifer Fleischer
Donny Florentino
Peter Foraker
Andre Forbes
Deborah Forde
Olivia Fortunato
Steven Fox
Nataniel Francisco
Octavio Franco
Sita Frederick
Dylan Friedman
James Fry
Laura Furlipa
Jerome Fyffe

Salvatore Galati
Madelin Garcia
Sammy Garcia Jr.
Luvenia Garner
Melissa Gawlowski Pratt
Ilyssa Gillman
Heber Gomez
John Gonzalez
Alvie Gordon
Cleve Gordon
Anissa Graham
Arlene Graime
Tawana Grandison
Ellen Granger
Emily Grant
Paul Green
William Green
Richard Greene
Jacqueline Grice
Josiah Grimm
John Grome
Oumarou Gueye
Maria Gutierrez
Juan Guzman
Ranhyer Guzman
Gunawan Halim
Leroy Hall
Russell Hammel
Jacqueline Handy
Harry Haouari
Sara Harris
Antwon Hart
Blair Hartman
Kevin Hayes
Thomas Hayes
John Heppell
Pamela Hernandez
Luis Hernandez
William Hoagland
Peter Hoey
Miranda Hoffner
John Holyoke
Alvin Hortaleza
Siri Horvitz
John Houlihan
Vardell Hughes
Harry Hunkele
Edwin Ibanez
Basha Iddi
Yelena Ingberg
Edward Ingenito
Cristina Iskander
Basiru Jabbi
Dovi James
Imani James
Martin Jennings
Paula Jennings
Dennis Jimenez
Jason Jimenez
Ayesha Johnson
Eliza Johnson
Kimba Johnson
Weldon Johnson
Christine Jones
Michelle Jones
Kiesha Jordan
Nicole Jordan
Robert Jordan

Preston Judd
Joshua Kalmanson
Thomas Kane
Matthew Karkutt
Eugene Karyakin
David Kendall Jr.
Karen Kincaid
Emily Kling
Jane Kolb
Kade Kouyate
Carolyn Krupski
Daniel Kruziewicz
Jean Kwartler
Stacey Lancaster
Amy Lansky
Danso Lasana
Robin Lawson
Deanne Lay
Joseph Leahy
Stefanie Lehmann
Jordana Leigh
Carina Leong
John Lewis
Eddie Lindsey
Diego Lizardi
Lila Lomax
Mauricio Lomelin
Veronica Loomis
Lily Lovinger
Yaphet Lowe
Joseph Lozito
Erie Lugo
Amanda MacBlane
Tudor Macarie
Edwin Madera
Robert Mahon
Alison Mahoney
Carlos Maisonet
Evelyn Maldonado
Robert Mansfield
Logan Marlowe
Jason Marsh
Donald Martin
Kenneth Martin
Kevin Martin
Rosemarie Martin
Julio Martinez
Oscar Martinez
Carlton Matthew
Hezekiah Matthew
Dion Matthews
Vincent Matthews
Courtney Mattis
Baboucarr Mboob
Kevin Perez
James McCauley
Yvette McClain
Christopher McCleod
Meghan McGill Esquivel
James McGlynn
Roy McHayle
Anthony McKay
Patrick McLaughlin
Jermaine McLean
Albert McNamee
William McShea
Kaitlyn Meade
Susan Mellin

Justin Mendez
Kwame Mensah
Felix Mercedes
Hector Mercedes
Phillip Merrifield
Roosvelt Mesidor
Peter Meyers Jr
Dawn Meyers
Leonard Milia
K'idar Miller
Valerie Mitchell Johnston
Ewa Mobus
Zahir Mohamed
Barbara Molfetas
Peter Montalbano
Diana Montano
Kevin Mooney
Cecily Moore
Kami Morasco
Kenneth Morgan
Glen Morrice
Akeem Morris
Corey Morris
Dionysus Morrison
Julia Morton
Daniel Mulligan
Brian Murphy
Jon Nakagawa
Desiree Naranjo
Fernando Naranjo
Jose Naranjo
Helena Nazzaro
Masai Neal
Darwin Nelson
Henry Nelson
Nkpot Nkpot-Ojong
Joel Noe
Rodolfo Olivares
Radames Ortiz
Jose Pacheco
Alice Pagan
Michael Pagan
Kelly Page
Godfrey Palaia
Nicholas Palm
Richard Paltoo
Eric Pamplin
Michael Parente
Gwendolyn Parker
Jasmine Parker
Mario Parra Navarro
Eric Parson
Katherine Peck
Bernadette Pender
Jessi Perez
Luis Perez
Ronald Perez
Renay Peters Joubert
Isaac Peters
Tarra Peters
Kathryn Peterson
Wilfred Pierrette
Bettina Pinter
Nigel Pitt
Daisy Placeres
Melinda Planey
Joseph Platia
Rebecca Podsednik

Kerin Poe
 Rebecca Popp
 Loraine Potier
 Valerie Powers
 Carlos Prieto
 Jenara Prieto
 Roland Pringle
 Santina Protopapa
 Michael Pupello
 Wieslaw Radzimowski
 Amy Rafa
 Diane Ramo
 Robin Ramos
 Robert Regan
 Marisa Remez
 Silvio Restrepo
 Edward Reynoso
 Madeline Ricca
 Daniel Rivera
 Desiree Rivera
 Hector Rivera
 Regina Rivera
 Percy Roberts
 Darren Robertson
 Leon Robinson
 Jessica Rodriguez
 Pedro Rodriguez
 Louis Rogers Jr
 Luis Roman
 Yokasta Romano
 Angel Rosado
 Lauren Roth-Shaw
 Jeffrey Rothlein
 Wesley Royce
 Michael Rubino
 Ronald Ruggiero
 John Santana
 Pablo Santiago
 Jhonatan Santos
 Yensi Santos
 Samantha Sarduy
 Andrew Sargeant
 Alex Sarian
 Bonnie Sauer
 Bryan Saxon

Michele Schaffer
 Danielle Schiffman
 Zachary Schmidlein
 Martin Schott
 Donna Schreiber
 Tod Schreiber
 Lisa Schroeder
 Scott Schubert
 Peg Schuler-Armstrong
 Kathleen Scott
 Antonio Serna
 Roger Sewhcomar
 Christina Seymour
 Melanie Shank
 Elrige Shelton
 Dawood Shittu
 Michael Shoblock
 Luna Shyr
 Kiara Sinclair
 Isabel Sinistore
 Mari Slater
 Jonathan Slawson
 Dexter Smith
 Junius Smith
 Brian Smyth
 Mark Sookram
 Steven Spear
 Preston Spooner
 Claudett Staple
 Jamel Stapleton
 Melanie Stark
 Jill Sternheimer
 Granville Straker
 Corey Strickland
 Emily Sullivan
 Tim Summerville
 Debra Szuper
 Lisa Takemoto
 Robert Tarleton
 Fitzroy Taylor
 Jean Taylor
 Norman Taylor
 Kimberly Teller
 Brendan Tendrich
 Lynn Terry

Winston Thelwell
 Tatiana Thomas
 Colleen Thompson
 Damion Thompson
 Wilma Thompson
 Ellen Thornton
 Gary Tipton
 Erin Toland
 Emily Tomeu
 Jennifer Tortorello
 Richard Toth
 Mamadou Tounkara
 Mohamed Touri
 Laurel Toyofuku
 Stacey Tunks
 Jeffrey Turchi
 Shautne Turner
 Myxolydia Tyler
 Leann VanDerHayden
 Sheila Vaughan
 Luis Vazquez
 Andrew Verona
 Daniel Wallace
 Edward Walsh
 Robert Walters
 Jason Ward
 Naomi Warner
 Dacia Washington-Torchia
 Alfonzo Watts
 Michael Wekselblatt
 Milton Whyne
 Sandra Wiley
 Andrew Wilk
 Randolph Wilkins Jr
 Dwayne Williams
 Dana Willis
 Eileen Willis
 Rachel Winkler
 Douglas Woodward
 Hanako Yamaguchi
 Alexis Yu
 Delvis Yuita
 Kaitlyn Zafonte

As of October 22, 2018

Cover: ©Iñaki Vinaixa; Inside cover: *The Creation*: ©Stephanie Berger; p.2: *Bernstein MASS*: ©Richard Termine; p.3 Russell Granet, Katherine Farley: ©Brian Stanton; p.4: Lincoln Center campus: ©Iñaki Vinaixa; p.6-7: Big Umbrella Festival: Haghi Suka; p.8-9: Middle School Arts Audition Boot Camp: Jesse Iskowitz; p.10-11: *Up and Away*: Courtesy of Trusty Sidekick Theater Company; photo by Buatti-Ramos Photography; p.12-13: Summer Forum; Tarana Burke: Lincoln Center Education; p.14-15: Lincoln Center Awards for Emerging Artists: ©Richard Termine; p.16-17: RZA, p.18-19: Naomi & Her Handsome Devils: Kevin Yatarola; p.20-21: *NINAGAWA Macbeth*: ©Stephanie Berger; p.22-23: *Claremont Illuminated*: Bronx Documentary Center; p.24-25: *Voices of a People's History*: Kevin Yatarola; p.26-27: Andrew Rannells: still from *Stars in Concert, Live From Lincoln Center*; p.28-29: Lincoln Center Moments: Kevin Yatarola; p.30-31: *Yeethoven II: Two Eras, One Radical Spirit*: Ethan Covey; p.32-33: *In the Name of the Earth*: ©Stephanie Berger; p.34: *Available Light*: ©Richard Termine; p.37: Simon Rattle: Stuart Skelton; p.38: *The Psalms Experience*, p.39: Lizz Wright, p.40: Harlem Renaissance Orchestra, p.41: Gaby Moreno: Kevin Yatarola; p.42: Elida Almeida: Sachyn Mital; p.43: Brady Rymer and the Little Band That Could: Haghi Suka; p.44-45: *In the Name of the Earth*: ©Iñaki Vinaixa; p.46: Boot Camp: Jesse Iskowitz; p.47: Family-Linc: David Flores; p.48: Lincoln Center Stage artists: Kathryn Barnard p.49: Sutton Foster and Jonathan Groff: Kevin Yatarola; p.50: Emmylou Harris: ©Sean Carroll; p.52: Josie Robertston Plaza; inside back cover: Revson Fountain: ©Iñaki Vinaixa.

A copy of the last Annual Report filed with the New York State Office of the Attorney General may be obtained by writing to the New York State Office of the Attorney General, Charities Bureau, 120 Broadway, New York, NY 10271 or to Lincoln Center for the Performing Arts, Inc., 70 Lincoln Center Plaza, New York, NY 10023-6583, Attention: Annual Report.

©2018 Lincoln Center for the Performing Arts, Inc.

American Songbook, Capacities for Imaginative Learning, CenterCharge, Lincoln Center, Lincoln Center at the Movies, Lincoln Center Education, Lincoln Center Institute, *Live From Lincoln Center*, Meet the Artist, Midsummer Night Swing, Mostly Mozart, Think Like An Artist, and The Five Arches & Design are registered trademarks and service marks of Lincoln Center for the Performing Arts, Inc.





Lincoln Center

Culture + Community

*Celebrating 60 years of innovation,
advocacy, and collaboration*