

WALK TRAILS



Walk trail number 1

Linking the new townsite and old townsite. Church Ave to store.

Distance; 1.3kms

Time; 20mins

Rating; easy

Wheelchair, prams and bicycles

Walk trail number 2

Old Lake King goods shed via the cemetery and return

No water on route

Distance; 3.6kms

Time; 1.5hours

Rating; easy

Walk trail number 3

C.B.H. walk from the blue house to the gimlet patch near C.B.H. and return via catchment to the tavern or to the store via the bridge.

No water on route

Distance; 3.6kms

Time; 1.5hours

Rating; easy

Walk trail number 4

Commences at the caravan park via Critchley Street to golf club and return via the light industrial area.

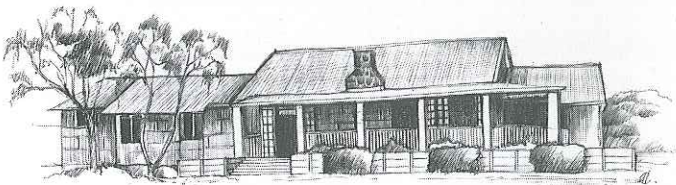
Distance; 1.6kms

Time; 30mins

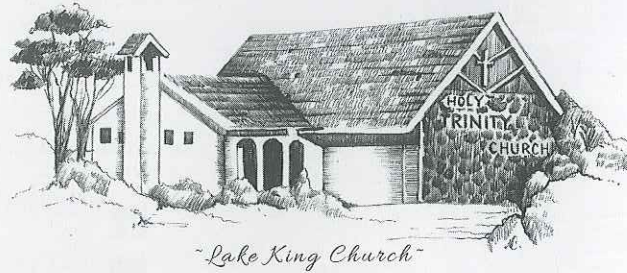
Rating; easy

Wheelchair, pram and bicycle

Watch for numbered yellow tags that correspond with the numbers on the inside of this brochure.



~Lake King Tavern~



~Lake King Church~

HOW IMPORTANT IS THE FOREST FLOOR?

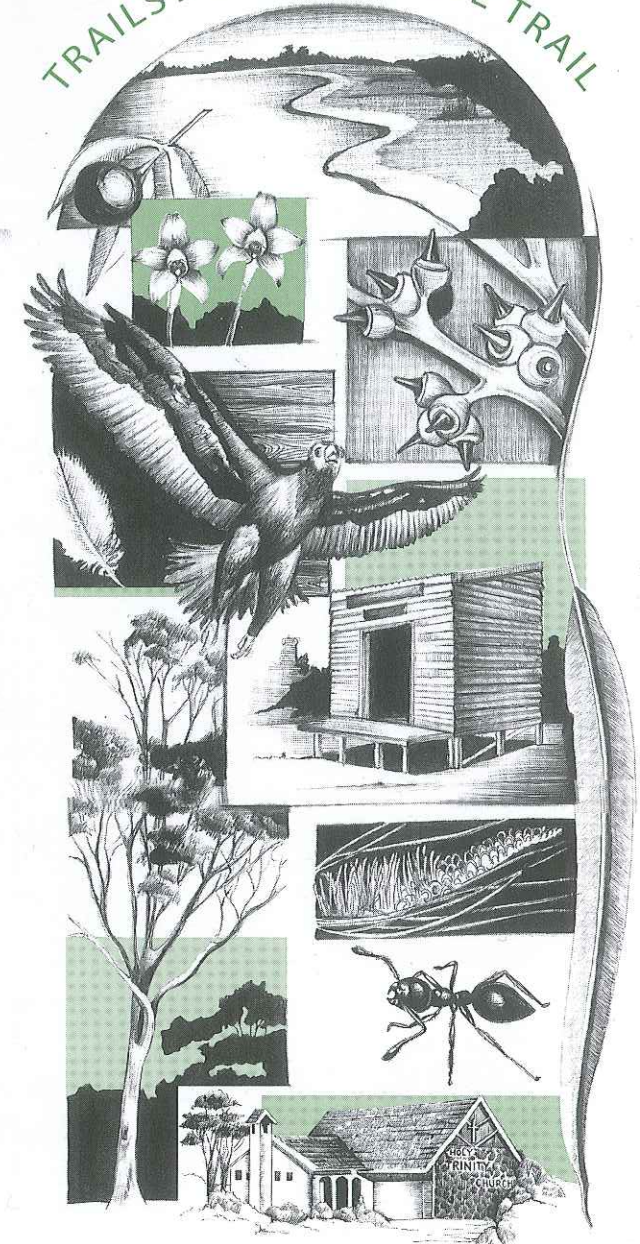
The forest floor is littered with fallen branches, trunks and leaves. This material is decomposed and recycled by fungi, bacteria, termites and other insects thus providing a natural fertiliser for the growing forest. The debris provides habitat and food for many creatures and collects falling rain.

CONTACT NUMBERS

Lake King Tavern & Motel :	98 744048
Lake King Caravan Park:	98 744048
Lake King Store:	98 744015
Lake King Machinery:	98 744086
The Bottle House:	98747032 or 0447211100

LAKE KING

TRAILSWEST HERITAGE TRAIL



Presented to you by:

The Lake King Progress Association

Welcome to our town of

Lake King

The Lake King Walk Trails have been provided for the enjoyment of locals and visitors who wish to undertake short walks and enjoy our wildflowers, native vegetation, and a little of our history.

The main footpath links the old townsite (est. 1928) with the newer area (1970's) and is suitable for walkers, cyclists and wheelchairs, as is the loop from the caravan park to the golf course. Other paths linked to the main trail, are walks through divergent bushland.

All paths are well marked with directional signs. As springtime in Lake King is ablaze with the colour of many varieties of flowering shrubs and trees, many of these have been identified for your enjoyment and labelled with yellow tags to correspond to the flora mentioned in this brochure.

You will pass through different ecosystems, mallee woodlands, open salmon gum forests, kwongan heath, gimlet thickets, and 'winter' wetlands.

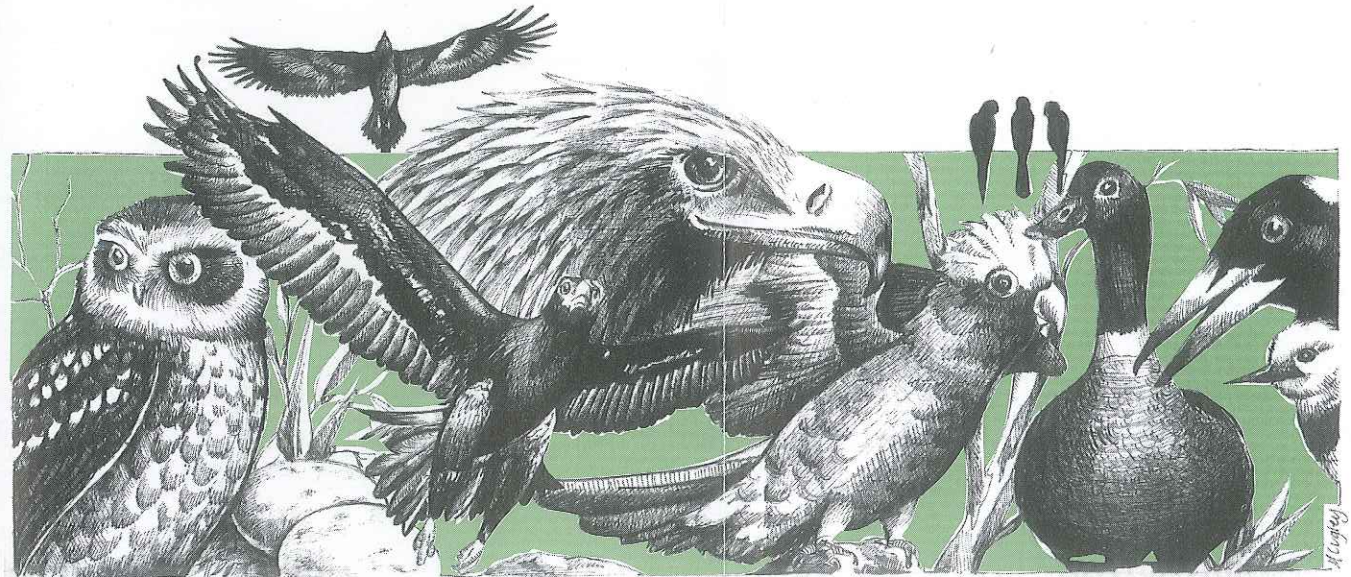
The bird species sighted in Lake King bushland are listed for you to identify ~ take your binoculars for more interesting sightings.

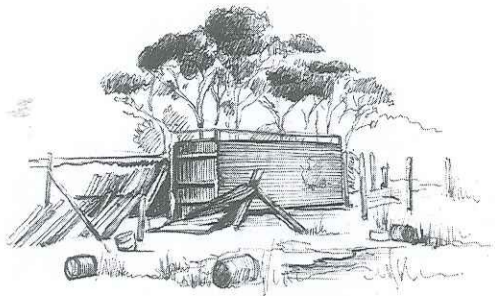
The fauna is both interesting and diverse, but normally secretive, so look carefully you may see an echidna, racehorse goanna, shingle back lizard (bobtail), dugite -(snake) plus many other smaller invertebrates and insects.

BIRDS SIGHTED in the Lake King Walk Trail Bushland



*White eared honeyeater		(lichenostomus flavicollis)	*Grey shrike thrush	(colluricincla harmonica)
*Grey Currawong	Squeaker	(strepera versicolor)	*Yellow plumed honeyeater	(lichenostomus plumulus)
*Brown goshawk		(accipiter fasciatus)	*New Holland honeyeater	(phylidonyrus novaehollandiae)
*Raven	"Crow"	(corvus coronoides)	*Tawney crowned honeyeater	(phylidonyrus melanops)
*Elegant parrot	Grass parrot	(neophema elegans)	*Richards pipit	Groundlark (anthus novaeseelandiae)
*Regent parrot	Smoker parrot	(polytelis anthoepus)	*Magpie	"Maggie" (gymnorhina tibicen)
*Ringneck parrot	"28", ringneck	(barnardius zonarius)	*Mudlark	"peewee" (grallina cyanoleuca)
*Red wattle bird		(anthochaera carunculata)	*White fronted chat	"Tin Tac" (eptionura albifrons)
*Australian shelduck	Mountain Duck	(tadorna tadornoides)	*White faced heron	(egretta novaehollandiae)
*Wood duck	Maned duck	(chenonetta jubata)	*Crested pigeon	(ocyphaps lophotes)
*Wedge tailed eagle	"Wedgy"	(aquila audax)	*Bronzewing pigeon	(phaps chalcoptera)
*Crested bellbird	Bellbird	(oreoica gutturalis)	*Yellow Rumped Thornbill	(acanthiza chrysorrhoa)
*Galah	"Pink and Grey"	(eolophus roseicapilla)	*Butcher Bird (pied & grey)	(cracticus nigrogularis & torquatus)
*Southern boobook owl	Mopoke	(ninox novaeseelandiae)	*Golden Whistler	(pachycephala pectoralis)
*White browed babbler	"Hoppingjenny"	(pomastomus superciliosus)	*Weebill	(smicromis brevirostris)
*South scrub robin		(drymodes brunneopygia)	*Willy wagtail	(rhipidura leucophrys)
*Yellow throated minor	Micky miner	(manorina flavigula)	*Blue Wren	(malurus pulcherrimus)

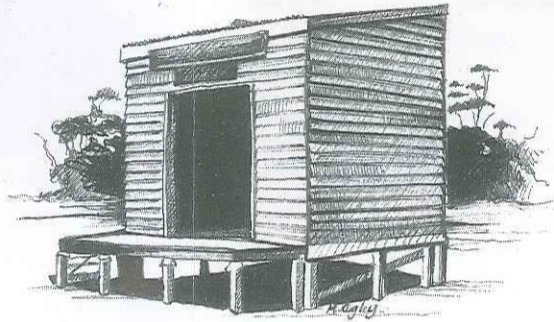




Old Community Sheep Dip

- 1 Grevillea excelsior - orange flame grevillea, it is an adapted floral emblem of Lake King.
- 2 Grevillea eryngioides
- 3 Pityrodia terminalis - native foxglove, southern populations have white flowers, while northern heaths are pink.
- 4 Allocasuarina acutivalvis - the sheok is unique, as there are separate male and female trees.
- 5 Personia sp. Sometimes referred to as "snottygobble"
- 6 open mallee woodland
- 7 Eucalyptus eremophila - tall sand mallee. I store energy in a stump under the ground called a lignotuber, after wild fires the stored energy helps me to grow again.
- 8 typical Melaleuca thicket
- 9 Eucalyptus transccontinentalis
- 10 dodder vine - a native creeper that hosts on many plants, mainly eucalyptus, heavy infestations may kill the hosts.
- 11 Melaleuca uncinata - broom bush
- 12 Grevillea huegelii
- 13 Santalum acuminatum - quandong. A semi parasitic small tree, with large glossy, red, edible fruit. Can be made into jam.

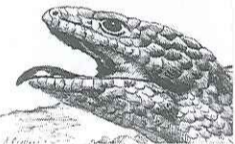
- 14 Callitris preissi - native Cyprus pine. Rottnest Island pine
- 15 Calothamnus quadrifidus - one sided bottlebrush
- 16 Hakea victoria - royal hakea (introduced from the area near Hopetoun)
- 17 Melaleuca cordata
- 18 Eucalyptus globata
- 19 Verticordia eriocephala - feather flower
- 20 Leptospermum sp. - Tea tree
- 21 Lepidosperma - rushes
- 22 low complex heath plant communities known as kwongan heath, supporting hundreds of plants and animal species.
- 23 Hakea multilineata - wodjil. Grass-leaved hakea
- 24 Cyanostegia angustifolium
- 25 Glischrocaryon aureum - a perennial herb. Yellow pop flower
- 26 Hakea erecta
- 27 Senna sp.
- 28 Eucalyptus salubris var. glauca



Goods Shed

- 29 Hakea commutata
- 30 Daviesia sp.
- 31 Eremophila sp.
- 32 Eucalyptus celastroides var. virella
- 33 Eucalyptus salmonophloia - salmon gum
- 34 Melaleuca lateriflora
- 35 Olearia muelleri - goldfields daisy
- 36 Goodenia sp.
- 37 Wilsonia humilis
- 38 Austrostipa elegantissima - native spear grass
- 39 Mairiana brevifolia - blue bush
- 40 Dianella revoluta
- 41 goshawk's nest in a salmon gum tree
- 42 tree 'burl' - this is caused by early insect attack causing the tree to distort.
- 43 Eucalyptus flocktoniae - merritt
- 44 mallee woodland
- 45 Melaleuca pauperiflora - boree. In the early days these trees were used for fence posts.
- 46 Eucalyptus salubris woodland - this is known as the twisted gimlet because of the unique trunk formation.
- 47 Melaleuca acuminata
- 48 complex winter wet system
- 49 Allocasuarina sp.
- 50 Banksia elderiana
- 51 Isopogon sp.

- 52 Melaleuca giberimma
- 53 Eucalyptus flocktonia seedlings - small merritt
- 54 Eremophila decipiens - emu bush (the seeds are eaten by emus)
- 55 Dodonaea sp. - native hop bush
- 56 mixed woodlands of eucalyptus species
- 57 Acacia erinacia - one of the many wattles
- 58 Templetonia sp.
- 59 Melaleuca viminea
- 60 Kondinin blackbutt
- 61 Santalum murrayanum - bitter quandong, inedible
- 62 look upwards and southwards: here is a nest of Australia's biggest bird of prey - the wedge-tailed eagle.
- 63 salmon gum - pat me, feel my smooth salmon coloured bark
- 64 large mature boree
- 65 this tree shows damage caused by the native longicorn beetle
- 66 Eucalyptus melanoxylon - black morrell
- 67 Eucalyptus myriadena
- 68 I am a very old "nature boarding house" - hundreds of living creatures here - ants, birds, spiders and more.
- 69 This woodland was damaged by fire in 2000, note the new growth from the lignotuber of the mallees and the opportunistic germinates.



Lake King

LEGEND

Lake King Bush		Accommodation	
Walk Trail		Caravans/Camping	
Information		Toilets	
Barbeques		Food/ Beverage	

