



**India Meteorological Department
Earth System Science Organisation
(Ministry of Earth Sciences)**

BULLETIN NO.: 10 (BOB 08/2018) and BULLETIN NO. : 20 (ARB 04/2018)-Modified

TIME OF ISSUE: 1500 HOURS IST

DATED: 09.10.2018

FROM: INDIA METEOROLOGICAL DEPARTMENT (FAX NO. 24643965/24699216/24623220)

TO: CONTROL ROOM, NDM, MINISTRY OF HOME AFFAIRS (FAX.NO. 23093750)

CONTROL ROOM NDMA (FAX.NO. 26701729)

CABINET SECRETARIAT (FAX.NO.23012284, 23018638)

PS TO HON'BLE MINISTER FOR S & T AND EARTH SCIENCES (FAX NO.23316745)

SECRETARY, MOES, (FAX NO. 24629777)

H.Q. (INTEGRATED DEFENCE STAFF AND CDS) (FAX NO. 23005137/23005147)

DIRECTOR GENERAL, DOORDARSHAN (23385843)

DIRECTOR GENERAL, AIR (23421105, 23421219)

PIB MOES (FAX NO. 23389042)

UNI (FAX NO. 23355841)

D.G. NATIONAL DISASTER RESPONSE FORCE (NDRF) (FAX NO. 24363261)

DIRECTOR, PUNCTUALITY, INDIAN RAILWAYS (FAX NO. 23388503)

CHIEF SECRETARY, TAMILNADU (FAX NO. 044-25672304)

CHIEF SECRETARY, KERALA (FAX NO. 0471-2327176)

ADMINISTRATOR, LAKSHADWEEP ISLANDS (FAX NO. 04896-262184)

ADMINISTRATOR, UNION TERRITORY OF DAMAN & DIU AND DADRA NAGAR HAVELI (0260-2230775)

CHIEF SECRETARY, KARNATAKA (FAX NO. 080-22258913)

CHIEF SECRETARY, GOA (FAX NO. 0832-2415201)

CHIEF SECRETARY, MAHARASHTRA (FAX NO. 022- 22028594)

CHIEF SECRETARY, GUJARAT (FAX NO. 079-23250305)

CHIEF SECRETARY, ANDHRA PRADESH (FAX NO. 0866-2441029)

CHIEF SECRETARY, ODISHA (FAX NO. 0674 -2536660)

CHIEF SECRETARY, WEST BENGAL (FAX NO. 033 -22144328)

CHIEF SECRETARY, ANDAMAN & NICOBAR ISLANDS (FAX NO. 03192- 232656)

CHIEF SECRETARY, MIZORAM (FAX NO. 389 -2322745)

CHIEF SECRETARY, TRIPURA (FAX NO. 0381-2414013)

CHIEF SECRETARY, ASSAM (FAX NO. 0361-2237200)

CHIEF SECRETARY, MEGHALAYA (FAX NO. 0364 -2225978)

Sub: (a) Deep depression intensified into Cyclonic Storm 'TITLI' over westcentral Bay of Bengal: Cyclone Warning for districts of north Andhra Pradesh & south Odisha coasts: Orange Message.

(b) Cyclonic Storm, 'LUBAN' over westcentral Arabian Sea

(a) Deep depression intensified into Cyclonic Storm 'TITLI' over westcentral Bay of Bengal: Cyclone Warning for districts of north Andhra Pradesh & south Odisha coasts: Orange Message.

The deep depression over westcentral Bay of Bengal moved west-northwestwards with a speed of 08 kmph during past 06 hours and intensified into a **Cyclonic Storm 'TITLI'** and lay cantered at 1130 hrs IST of today, the 09th October 2018 over Westcentral Bay of Bengal near latitude 14.8°N and longitude 86.7°E, about 530 km southeast of Gopalpur (Odisha) and 480 km east-southeast of Kalingapatnam (Andhra Pradesh). It is very likely to intensify further into a Severe Cyclonic Storm during next 24 hours. It is very likely to move west-northwestwards for some more time, then northwestwards and cross Odisha & adjoining north Andhra Pradesh coasts between Gopalpur & Kalingapatnam around morning of 11th October.

Thereafter, it is very likely to re-curve northeastwards, move towards Gangetic West Bengal across coastal Odisha and weaken gradually. Forecast track and intensity are given in the following table:

Date/Time(IST)	Position (Lat. °N/ long. °E)	Maximum sustained surface wind speed (Kmph)	Category of cyclonic disturbance
09.10.18/1130	14.8/86.7	65-75 gusting to 85	Cyclonic Storm
09.10.18/1730	15.2/86.3	70-80 gusting to 90	Cyclonic Storm
09.10.18/2330	15.6/85.9	80-90 gusting to 100	Cyclonic Storm
10.10.18/0530	16.0/85.6	90-100 gusting to 110	Severe Cyclonic Storm
10.10.18/1130	16.9/85.2	100-110 gusting to 125	Severe Cyclonic Storm
10.10.18/2330	18.0/84.9	100-110 gusting to 125	Severe Cyclonic Storm
11.10.18/1130	19.2/84.7	70-80 gusting to 90	Cyclonic Storm
11.10.18/2330	19.6/84.7	50-60 gusting to 70	Deep Depression
12.10.18/1130	20.2/85.0	40-50 gusting to 60	Depression

Spatial rainfall distribution: Isolated: <25%, A few: 26-50%, Many: 51-75%, Most: 76-100%

Rainfall amount (mm): Heavy rain: 64.5 – 115.5, Very heavy rain: 115.6 – 204.4, Extremely heavy rain: 204.5 or more.

(i) Heavy rainfall warnings:

Region	09 Oct. 2018*	10 Oct. 2018*	11 Oct. 2018*	12 Oct. 2018*
Odisha	Rainfall at many places with heavy falls at Isolated Places over south coastal Odisha from evening/night.	Rainfall at most places with heavy to very heavy falls at a few places and extremely heavy falls at Isolated Places over coastal Odisha.	Rainfall at most places with heavy to very heavy falls at a few places and extremely heavy falls at Isolated Places over coastal & adjoining interior Odisha.	Rainfall at many places with heavy falls at Isolated Places over north Odisha.
North Coastal Andhra Pradesh	Rainfall at a few places with heavy falls at isolated places from evening/night.	Rainfall at many places with heavy falls at Isolated Places.	Rainfall at many places with heavy falls at Isolated Places.	Nil
Gangetic West Bengal	Nil	Rainfall at many places with heavy to very heavy falls at Isolated Places over coastal West Bengal	Rainfall at most places with heavy to very heavy falls at Isolated Places	Rainfall at many places with heavy to very heavy falls at Isolated Places
Assam & Meghalaya	NIL	NIL	Rainfall at most places with heavy falls at isolated places	Rainfall at most places with heavy to very heavy falls at isolated places
Mizoram & Tripura	Rainfall at most places with heavy falls at isolated places	Rainfall at most places with heavy falls at isolated places	Rainfall at most places with heavy to very heavy falls at isolated places	Rainfall at most places with heavy to very heavy falls at isolated places

Note: * Rainfall till 0830 IST of next day.

Legends: **Red-Take Action**; **Orange- Be prepared**; **Yellow- be updated**; **Green: No warning**

Heavy rain: 64.5-115.5 mm/day; Very heavy rain: 115.6-204.4 mm/day; Extremely heavy rain: more than 204.4 mm/day

(ii) Wind warning

- Squally wind speed reaching 40-50 kmph gusting to 60 kmph very likely over southeast & adjoining eastcentral Bay of Bengal during next 24 hours.
- Squally wind speed reaching 65-75 kmph gusting to 85 kmph very likely over deep sea areas of westcentral & adjoining north Bay of Bengal and gradually increase to 80-90 kmph gusting to 100 kmph from 10th evening to 11th forenoon.
- Squally wind speed reaching 45-55 kmph gusting to 65 kmph is very likely to commence along & off along north Andhra Pradesh, Odisha and West Bengal coast from today, the 9th October night.
- It is very likely to increase **gradually becoming 100-110 kmph gusting to 125 kmph from 10th October 2018 evening onwards along & off south Odisha & adjoining districts of north Andhra Pradesh coasts** and 65-75 kmph gusting to 85 kmph along & off north Odisha, west Bengal and remaining districts of north Andhra Pradesh coasts.

(iii) Sea condition

- The sea condition is very likely to be rough to very rough over southeast & adjoining eastcentral Bay of Bengal during next 24 hours; and very rough to high over westcentral & adjoining north Bay of Bengal on today, the 9th October and high during 10th and 11th October 2018.

(iv) Storm Surge Warning

- Storm surge of height of about 0.5 m above astronomical tide is very likely inundate low lying areas of Srikakulam district of Andhra Pradesh; Ganjam, Khurda & Puri districts of Odisha at the time of landfall.

(v) Damage Expected over districts of Visakhapatnam, Vizianagaram and Srikakulam of Andhra Pradesh, Gajapati, Ganjam, Khurda, Nayagarh and Puri districts of Odisha :

- Damage to thatched huts/houses; Minor damage to power and communication lines due to breaking of branches and uprooting of trees. Major damage to Kutcha & minor damage to Pucca roads. Some damage to paddy crops, banana, papaya trees and orchards. Sea water inundation in low lying areas after erosion of Kutcha embankments.

(vi) Action Suggested:

- The fishermen are advised not to venture into deep sea areas of central Bay of Bengal during 9th to 10th October 2018 and north Bay of Bengal during 9th to 11th October 2018 and into north Andaman Sea during next 12 hours. Those, who are out in deep sea areas are advised return to the coast.
- Total suspension of fishing operations.
- Coastal hutment dwellers are advised to move to safer places. Other people in the affected areas to remain indoors.

Spatial rainfall distribution: Isolated: <25%, A few: 26-50%, Many: 51-75%, Most: 76-100%

Rainfall amount (mm): Heavy rain: 64.5 – 115.5, Very heavy rain: 115.6 – 204.4, Extremely heavy rain: 204.5 or more.

(b) Cyclonic Storm, 'LUBAN' over westcentral & adjoining southwest Arabian Sea:

The Cyclonic Storm over westcentral & adjoining southwest Arabian Sea moved northwestwards with a speed of about 04 kmph in last 06 hours and lay centered at 1130 hrs IST 09th October 2018 over westcentral & adjoining southwest Arabian Sea, near latitude 13.1°N and longitude 60.1°E, about 780 km east-southeast of Salalah (Oman), 670 km east of Socotra Islands (Yemen) and 920 km east-southeast of Al-Ghaidah (Yemen). It is very likely to intensify into a Severe Cyclonic Storm during next 06 hours. It is very likely to move west-northwestwards towards Yemen & South Oman Coasts during next 5 days. Forecast track & intensity are given in the following table:

Date/Time(IST)	Position (Lat. °N/ long. °E)	Maximum sustained surface wind speed (Kmph)	Category of cyclonic disturbance
09.10.18/1130	13.1/60.1	80-90 gusting to 100	Cyclonic Storm
09.10.18/1730	13.3/59.5	90-100 gusting to 115	Severe Cyclonic Storm
09.10.18/2330	13.5/59.1	100-110 gusting to 125	Severe Cyclonic Storm
10.10.18/0530	13.7/58.7	100-110 gusting to 125	Severe Cyclonic Storm
10.10.18/1130	13.9/58.4	100-110 gusting to 125	Severe Cyclonic Storm
10.10.18/2330	14.2/57.7	100-110 gusting to 125	Severe Cyclonic Storm
11.10.18/1130	14.5/57.0	110-120 gusting to 135	Severe Cyclonic Storm
11.10.18/2330	14.7/56.3	110-120 gusting to 135	Severe Cyclonic Storm
12.10.18/1130	14.8/55.7	110-120 gusting to 135	Severe Cyclonic Storm
12.10.18/2330	14.8/54.6	110-120 gusting to 135	Severe Cyclonic Storm
13.10.18/1130	14.7/53.3	100-110 gusting to 125	Severe Cyclonic Storm
13.10.18/2330	14.6/52.0	90-100 gusting to 115	Severe Cyclonic Storm
13.10.18/1130	14.5/50.7	70-80 gusting to 90	Cyclonic Storm

Warnings:**(i) Wind warning**

- Gale wind speed reaching 85-95 kmph gusting to 105 kmph is prevailing over westcentral & adjoining southwest Arabian Sea. It is very likely to increase gradually becoming 110-120 kmph gusting to 135 kmph during 10th to 12th October 2018 over westcentral Arabian Sea around the system centre. The wind speed is very likely to decrease gradually over southwest Arabian Sea during next 24 hours.

(ii) Sea condition

- The sea condition is very high around the system centre. It is very likely continued to be very high over westcentral Arabian Sea till 13th October 2018 and over Gulf of Aden during 11th to 13th October .

(iii) Fishermen Warning

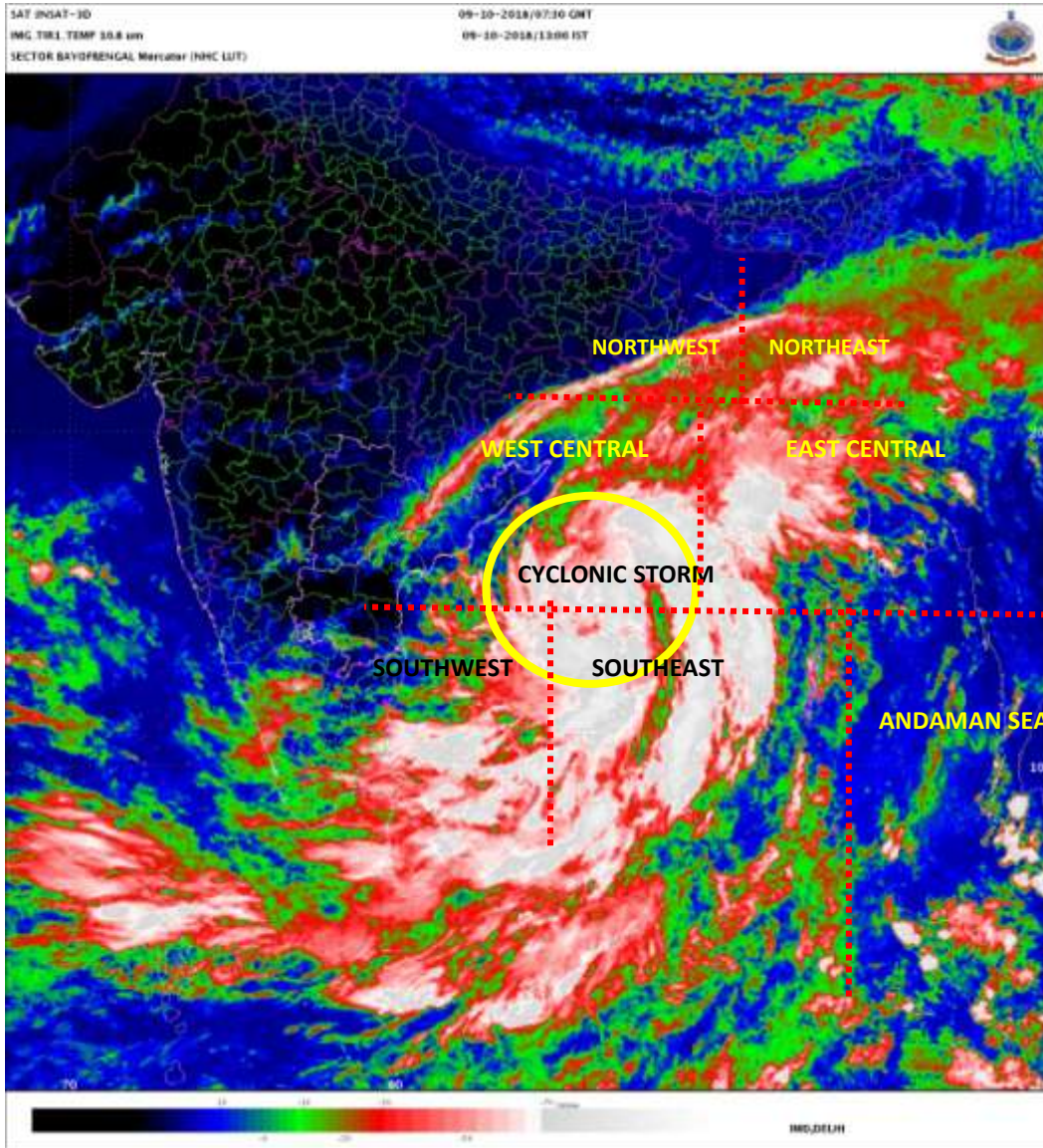
- The fishermen are advised not to venture into deep sea areas of westcentral Arabian Sea & Gulf of Aden till 13th October and adjoining southwest Arabian Sea till 10th October.

The next bulletin will be issued at 1730 hrs IST of 09th October, 2018.

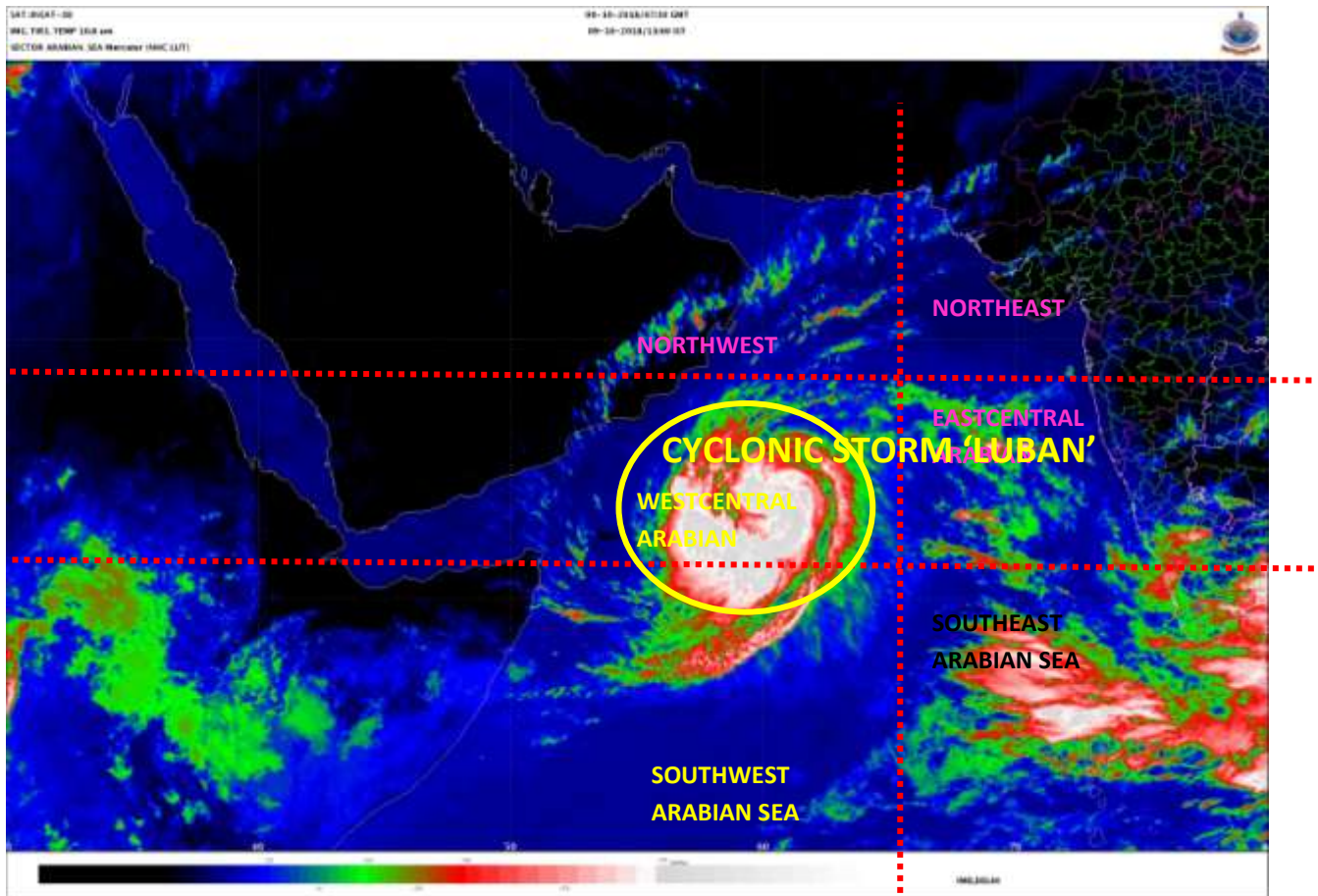
(Naresh Kumar)
Scientist-E, RSMC, New Delhi

Copy to: CRS, Pune/ ACWC Chennai/ Kolkata/ Mumbai/MC Goa/Thiruvananthapuram/ Bengaluru/ CWC Ahmedabad.

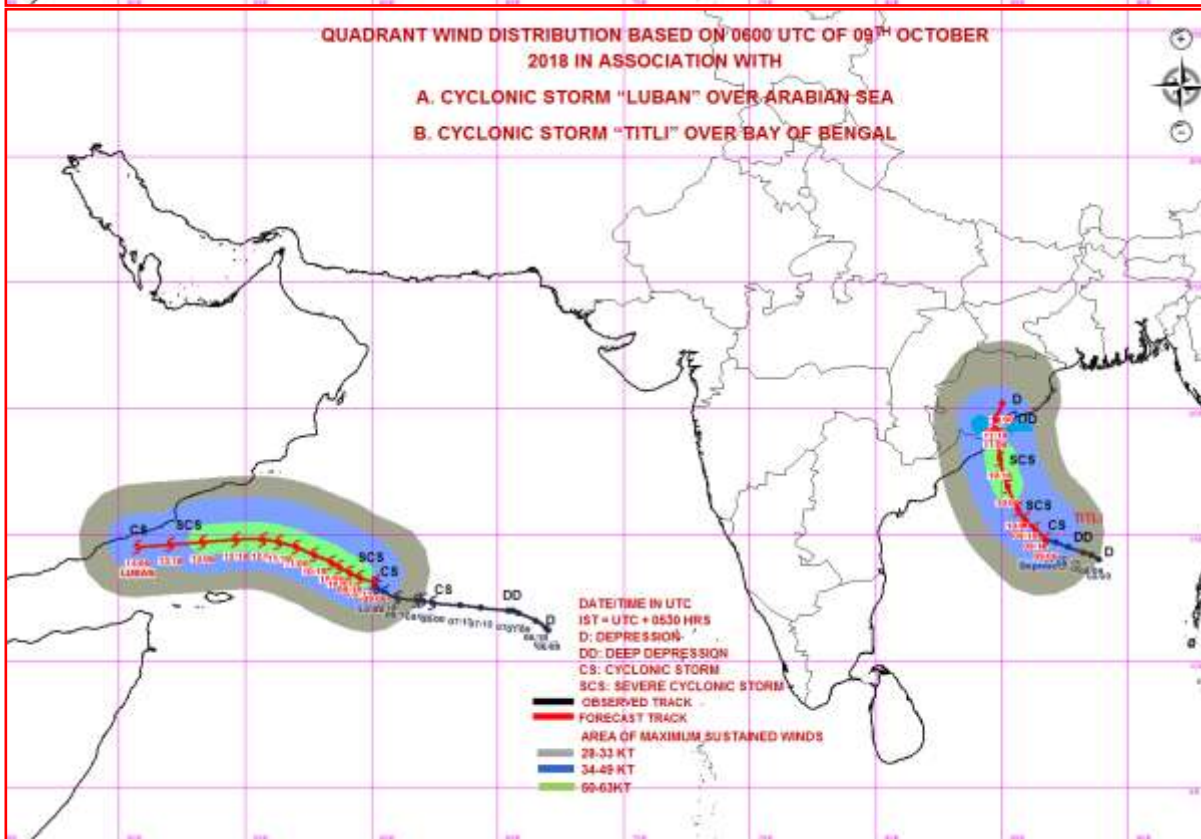
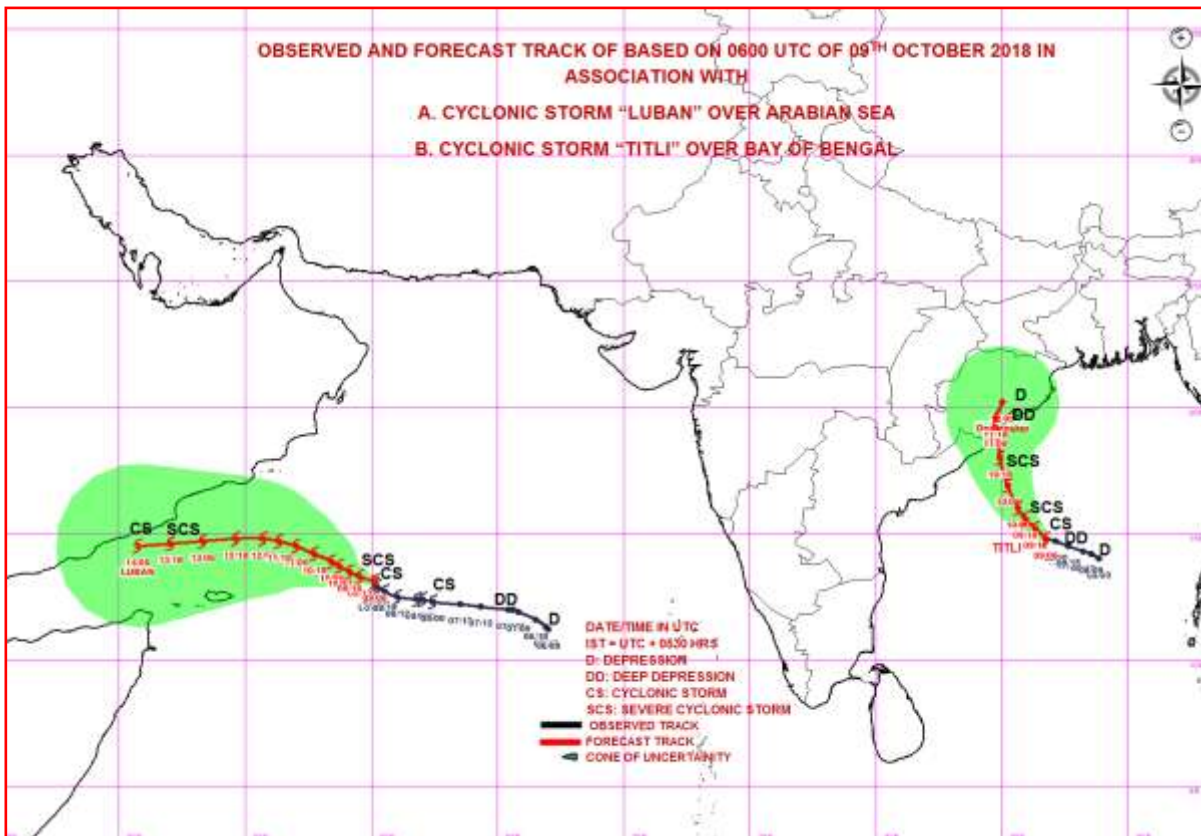
Spatial rainfall distribution: Isolated: <25%, A few: 26-50%, Many: 51-75%, Most: 76-100%
Rainfall amount (mm): Heavy rain: 64.5 – 115.5, Very heavy rain: 115.6 – 204.4, Extremely heavy rain: 204.5 or more.



Spatial rainfall distribution: Isolated: <25%, A few: 26-50%, Many: 51-75%, Most: 76-100%
 Rainfall amount (mm): Heavy rain: 64.5 – 115.5, Very heavy rain: 115.6 – 204.4, Extremely heavy rain: 204.5 or more.



Spatial rainfall distribution: Isolated: <25%, A few: 26-50%, Many: 51-75%, Most: 76-100%
 Rainfall amount (mm): Heavy rain: 64.5 – 115.5, Very heavy rain: 115.6 – 204.4, Extremely heavy rain: 204.5 or more.



Spatial rainfall distribution: Isolated: <25%, A few: 26-50%, Many: 51-75%, Most: 76-100%
Rainfall amount (mm): Heavy rain: 64.5 – 115.5, Very heavy rain: 115.6 – 204.4, Extremely heavy rain: 204.5 or more.