



# Haughton Solar Farm Project

Project Information

**E. I. ENGINEERING INTELLIGENCE.**  
That's what we do.

## Overview

RCR have been appointed by Pacific Hydro as the EPC contractor for the Haughton Solar Farm. The Haughton Solar Farm site is located 17 kilometres (km) from the township of Clare.

It is located in the Burdekin Shire. The project site was chosen because it has relatively flat land, solar access and access to the electricity grid; and compatible existing land uses.

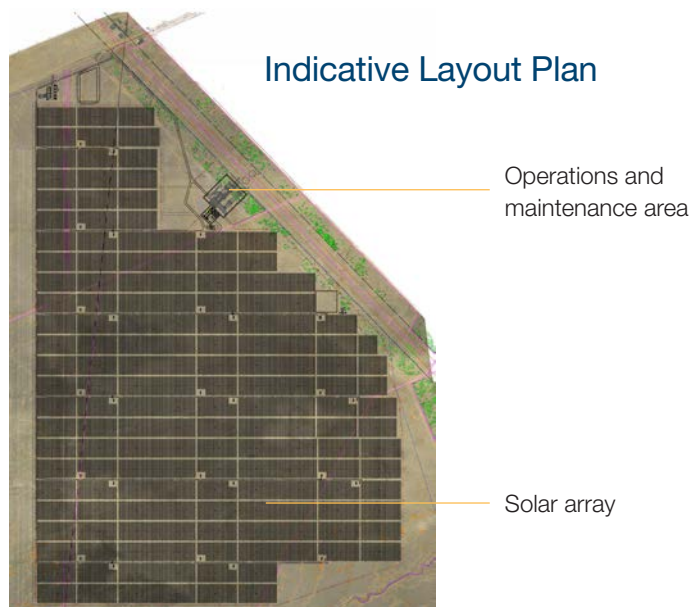
## Community Focused

## Approval

In 2017 Pacific Hydro received planning approval to construct and operate a Renewable Energy Facility (Solar Farm).

In this project start-up phase RCR is working with Pacific Hydro and Burdekin Shire Council to ensure that all the necessary conditions are met in order to commence construction on the land.

### Indicative Layout Plan





## Layout

The approved project layout has been designed to meet environmental and community considerations.

The project area is located to avoid areas of high environmental value as well as optimize the efficiency of the solar farm.

The solar farm is made up of solar panels which will be fixed to single access trackers so that they can track the sun.



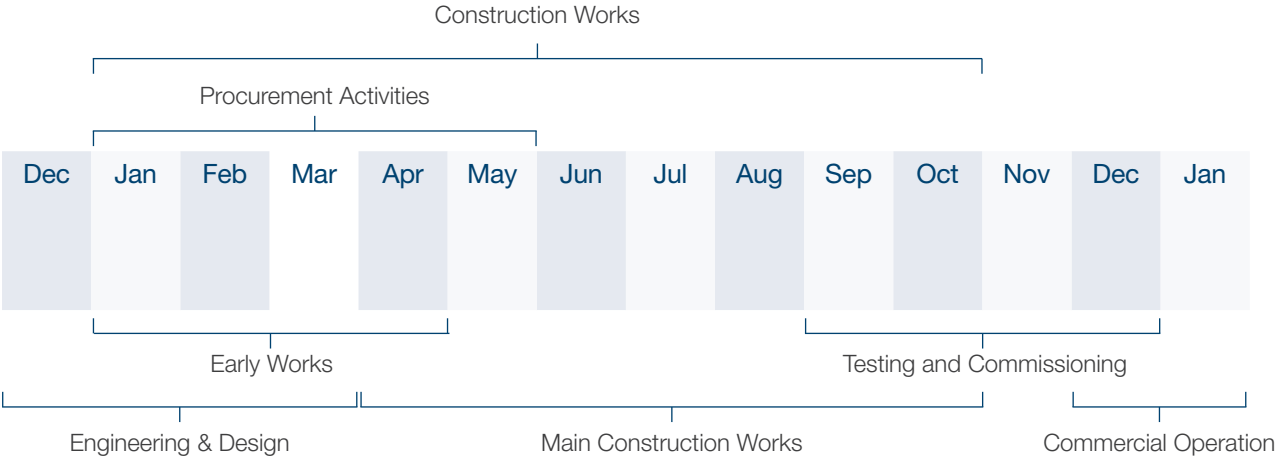
## Summary

Summary	Quantity
Development Area	360 Ha
Connection Capacity	100MWac
Access Rd	4 km
Internal Rds	10 km
No. Modules	396,198
No. Piles	54,648
No. Tracker Rows	4,554
Inverters/PCUs	81/27
HV Cable	20 km
DC Feed	104 km
DC String Cable	875 km

## Construction Timeline

The project development & construction works will be delivered in two phases; phase 1 – Early Works encompassing engineering, detail design and enabling works, and phase 2 – Main Construction works encompassing PV Plant and Substation construction and commissioning works

RCR is now commencing the site preparation works, with the main construction due to start this April/May 2018.



## Sydney

Level 23  
1 Macquarie Place  
Sydney NSW 2000  
+61 2 8413 3000

## Perth

Level 6  
251 St Georges Terrace  
Perth WA 6000  
+61 8 9355 8100

## Melbourne

Level 13  
717 Bourke Street  
Docklands VIC 3008  
+61 3 8378 2300

## New Zealand

8 Westfield Place  
Mt Wellington,  
Auckland NZ 1060  
+64 9 694 9625

## Malaysia

A-19-4, Northpoint Offices,  
Mid Valley City,  
No. 1 Medan Syed Putra  
Utara, 59200 Kuala Lumpur,  
Malaysia  
+60 3 2282 3292

RCR Tomlinson Ltd  
ABN 81 008 898 486  
enquiries@rcrtom.com.au



[rcrtom.com.au](http://rcrtom.com.au)

## Infrastructure

Leading provider of renewable energy, rail, transport, telecommunication, water, electrical and instrumentation, HVAC, property services and facilities management solutions

## Energy

Technology leader in power generation and energy plants

## Resources

Engineering, procurement, construction and maintenance expertise for the mining, oil & gas and industrial sectors. Technology leader for surface mining and bulk materials handling

## Project Updates

Project updates will be provided during the construction period. Updates and information about the project are also available on the Pacific Hydro website.

## Further Information

For project updates, please register your details with us via:

Phone 1800 730 734  
E-mail [enquiries@pacifichydro.com.au](mailto:enquiries@pacifichydro.com.au)  
Web [www.pacifichydro.com.au](http://www.pacifichydro.com.au)  
Post Level 13, 700 Collins Street  
Docklands VIC 3008