

The San Joaquin Historian



A Pictorial History of the
San Joaquin County Historical Museum

Spring 2016



The San Joaquin Historian

Official Journal of the San Joaquin County Historical Society

Spring 2016

Published by
San Joaquin County
Historical Society, Inc.
Micke Grove Regional Park
P.O. Box 30
Lodi, CA 95241
(209) 331-2055
www.SanJoaquinHistory.org
© San Joaquin County
Historical Society, Inc.

The Historical Society operates the San Joaquin County Historical Museum in Micke Grove Regional Park in partnership with the County of San Joaquin.

The Historical Society meets quarterly. Membership includes subscriptions to the *San Joaquin Historian* and the monthly newsletter, as well as free admission to the Museum and waiver of the parking fee for Micke Grove Regional Park.

Well-researched manuscripts on the history of San Joaquin County are welcome. The editor reserves the right to shorten and edit submitted material. Inquiry should be made through the Museum office.

Copies of the *Historian* can be purchased at the Museum and viewed online at sanjoaquin-history.org/articles.php.

Contents

Photographs of Board of Trustees and Staff	frontispiece
A Golden Year for the San Joaquin County Historical Museum	
President’s Message	1
Introduction	2
Museum Milestones and Photographs	
Inception: 1950s–1970s	3
Growth: 1980s	17
Program Development: 1990s	33
Expansion: 2000s	43
Maturation: 2010s	63
Appendix 1. Historical Society Mission and Program Statements	86
Appendix 2. Historical Society Presidents	87
Appendix 3. Museum Docent Council Presidents	88
Appendix 4. Historical Society Honorees	89
Appendix 5. Golden Acorn Awardees	90
Index	92



San Joaquin County Historical Society Board of Trustees, April 2016. Front row (left to right): Kenneth J. Mettler, Michael Machado, Janwyn Funamura, Elise Forbes, Thomas Shephard, Sr., Robert Shellenberger. Back row (left to right): Timothy Hachman, Jay Colombini, Tom Goad, Claude Brown, Benjamin Reddish, Jr., Robert Kavanaugh, Alan Johnson, Robert Ferguson. Not pictured: Gary Christopherson, Sue DePolo, Cynie Downs, Christopher Engh, Stephen Groom, Marie Medford, Robert Morrison, Stephen Muir.



Staff of the San Joaquin County Historical Museum, April 2016. Front row (left to right): Julie Blood, Judy Rodman, Ute Gampp, Robin Wood. Back row (left to right): Leigh Johnsen, David Stuart, Mike Mason, Henry Miller, Ron Van Gundy. Not Pictured: Tyler Mason, Teresa Shaw.

A Golden Year for the San Joaquin County Historical Museum

President's Message

It's an honor to serve as the president of the San Joaquin County Historical Society as we celebrate the golden anniversary of the Historical Museum in Micke Grove Regional Park. On behalf of the Society's Board of Trustees, I hope you enjoy this commemorative publication—a pictorial history of the Museum's fifty years.

The celebratory Golden Year was fittingly kicked off in January 2016 with the opening of an all-new, long-term exhibition: "Innovators in Agriculture," in the Cortopassi-Avansino Building. Its exhibits tell the stories of the families, farmers, and innovations connected with six crops identified with the County: fresh produce "truck farming," dry beans, asparagus, cherries, walnuts, and canning tomatoes.

The "Innovators in Agriculture" exhibition joined several other long-term exhibitions that opened in 2015. The Morse-Bewley Pioneer Gallery—featuring exhibits on the trappers/French Camp and the early American settlers of the County—opened in February 2015. A new hands-on children's gallery and Gold Rush exhibits were added in July. And in August 2015, an expanded Native Peoples Gallery was dedicated with all new exhibits on the Miwok- and Yokuts-speaking peoples who have lived here for thousands of years.

Later in 2015, the Ledbetter Family Barn was dedicated. It provides space for the Museum's From Farm to Fork program for preschool-through-second graders and supports other education programs conducted by the Museum Docent Council, including Valley Days and Pioneer School Day in the 1866 Calaveras Schoolhouse.

As we reflect on the many contributions by the County of San Joaquin, businesses, families, individuals, and docents that have created the current Museum, let us remember the original founders for their perseverance, dedication, and foresight in creating this Museum in 1966.

Looking forward, we should pledge to continue the improvement and expansion of the Historical Society and the Museum. We hope that future generations of County residents, school children, and visitors will be able to come to the Museum to experience, learn, and be inspired by the many accomplishments of our ancestors. We hope that the San Joaquin County Historical Museum will continue to encourage an appreciation of our shared heritage and will foster community pride for many generations to come.

Jay Colombini

President, San Joaquin County Historical Society

The San Joaquin Historian

Introduction

The San Joaquin County Historical Museum celebrates in 2016 its fiftieth anniversary. All the current buildings, exhibitions, and programs at the Museum are a living tribute to our shared history and the generous support of the County of San Joaquin and countless volunteers, supporters, and benefactors—none more important than the original benefactor, William G. Micke.

In 1961, William G. Micke left his entire estate to the County of San Joaquin. The San Joaquin County Historical Society (founded in 1954) thought items from William and Julia Micke's home should be saved for a future museum and that Micke Grove Park, which Mr. Micke had given to the County years before, would be an ideal site for a history museum.

Led by Medora Johnson, the Historical Society rallied the County Board of Supervisors, the County's department managers, prominent business people, and educators to support a museum. On December 21, 1965, the County Board of Supervisors approved a history museum at Micke Grove and authorized storage of historical items from the Micke home. The Historical Society would manage and develop the museum and Medora Johnson would serve as its initial director. The agreement between the County Board of Supervisors and the non-profit San Joaquin County Historical Society was approved on July 28, 1966.

From a humble workspace in the County Parks maintenance shop, Medora Johnson imagined a museum complex with several exhibit buildings and grounds featuring native plants and trees. In 1971, the first exhibition building opened and was named after William G. Micke.

As detailed in the milestones listed below, over the years, the Museum has grown to an 18.5-acre portion of Micke Grove Regional Park. Today, the campus includes eight exhibit buildings, four historic structures, an educa-

tion support building, the Sunshine Trail living exhibition of native habitats, the Delta Water Path, and a remnant of Mr. Micke's 1922 Tokay vineyard.

For fifty years, the San Joaquin County Historical Museum has preserved and interpreted the history of the County. The initial collection of a few hundred items, acquired from the William and Julia Micke estate in 1965, has grown to more than fifty thousand objects, photographs, and archival materials. The stories of generations of San Joaquin County residents have been preserved for the future; current and upcoming exhibitions, publications, programs, and media will continue to share them with San Joaquin County residents and visitors alike.

The Museum will continue to reveal the rich heritage of the region, from the Miwok and Yokuts Indians through Charles Weber (founder of Stockton and the first European farmer in the area) and the resourceful immigrants from around the world who developed San Joaquin County into a unique agricultural area.

David Stuart
Executive Director

Julie Blood
Collections and Exhibits Manager

Inception: 1950s–1970s



Milestones and Photographs

1950s–1960s

- 1954 – An initial meeting of Lodi city librarian Amy Boynton, businessman and Lodi city council member Willard Robinson, Naomi Carey, Gertrude Kettelman, and Medora Johnson established a historical society. It was first the Lodi Historical Society, then changed to the Northern San Joaquin County Historical Society.
- 1961 – The Historical Society dropped the word “Northern” from its name to become the San Joaquin County Historical Society.
- 1966 – The County Board of Supervisors approved an agreement with the San Joaquin County Historical Society creating the San Joaquin County Historical Museum. Medora Johnson was the driving force behind the Museum and became the first executive director. Among the duties of the Historical Society was “collecting, selecting, and recording items that are of historical significance that may be preserved in a county museum that may be erected in Micke Grove Park.”

The first donation to the Museum was a photograph of a 1902 Holt Steam Traction Engine built in Stockton. It was donated by Irene Simpson, director of the Wells Fargo Bank History Room in San Francisco.

- 1967 – The Museum’s first office and collections storage area opened in a building in Micke Grove Park shared with County Parks maintenance staff.

1970s

- 1970 – The Historical Society first published the monthly newsletter, “News and Notes.”
- 1971 – The Museum opened the first exhibit building, the William G. Micke Building.
- 1972 – The Museum Docent Council was established.
- 1973 – The Museum received accreditation from the American Association of Museums (now American Alliance of Museums).

The Historical Society first published the history journal, *The San Joaquin Historian*.

- 1974 – Missouri red cedar trees were planted southeast of the Erickson Building to commemorate the centennial of William G. Micke’s birth in Missouri.

Grace Nelson donated a LeTourneau Telescopic Scraper, made in Stockton by Robert G. LeTourneau in 1925. (It is now exhibited in the Brown-Jones Building.)

- 1975 – The Delta Building was constructed.

Inception: 1950s–1970s

The Society purchased the Floyd J. Locher Tool Collection, more than 3,300 hand- and foot-powered tools from the late sixteenth through the mid-twentieth centuries.

- 1976 – Museum docents celebrated the nation’s bicentennial by making a quilt for the Museum’s collections depicting the County’s history and characteristics. A duplicate quilt was auctioned to support the Museum.

Monica Hannasch of Scario, Italy, was commissioned to create a batik mural to interpret the theme: “man’s relation to the soil.” The mural, viewed from the main entrance to the Erickson Building, was a gift from Beatrice Schwartz in memory of her husband, David H. Schwartz, who helped create the Museum.

The Claude H. Erickson Building was completed. The Harness Shop was also constructed as a bicentennial project.

- 1977 – The Calaveras School was moved to the Museum. The one-room school was built in 1866 near the Calaveras River.

The San Joaquin Historian

BEFORE THE BOARD OF SUPERVISORS OF THE COUNTY OF SAN JOAQUIN,
STATE OF CALIFORNIA

R-66-870

RESOLUTION AUTHORIZING EXECUTION OF AGREEMENT WITH SAN JOAQUIN
COUNTY HISTORICAL SOCIETY RELATING TO COUNTY MUSEUM AT MICKE
GROVE

IT IS HEREBY RESOLVED AND ORDERED that the County of San
Joaquin shall enter into an agreement with the San Joaquin County
Historical Society, a California corporation, wherein and whereby,
among other things, said San Joaquin County Historical Society
agrees to collect, select, and record items that are of his-
torical significance that may be preserved in a county museum
that may be erected in Micke Grove Park.

IT IS FURTHER RESOLVED AND ORDERED that the Chairman of
the Board of Supervisors be, and he hereby is, authorized to
sign that certain agreement dated July 28, 1966 with the San
Joaquin County Historical Society relating to a county museum
at Micke Grove Park.

PASSED AND ADOPTED this 28th day of July, 1966, by the
following vote of the Board of Supervisors, to wit:

AYES: Supervisors Hoyt, Perino, Lehman, Wisdom

NOES: Supervisor Powell

ABSENT: none

ENDORSED
FILED _____ 19____
RALPH W. EPPERSON, Clerk
By Margie C. Smith
DEPUTY

Clifford C. Wisdom
CLIFFORD C. WISDOM, Chairman
Board of Supervisors
San Joaquin County
State of California

ATTEST: RALPH W. EPPERSON
County Clerk and Ex-officio
Clerk of the Board of Super-
visors of the County of San
Joaquin, State of California

By Margie C. Smith (SEAL)
Deputy Clerk

RECEIVED AND FILED IN THE OFFICE
OF THE CLERK OF THE BOARD OF SUPERVISORS
JUL 28 1966
ATTEST: _____
RALPH W. EPPERSON
By Margie C. Smith

Inception: 1950s–1970s

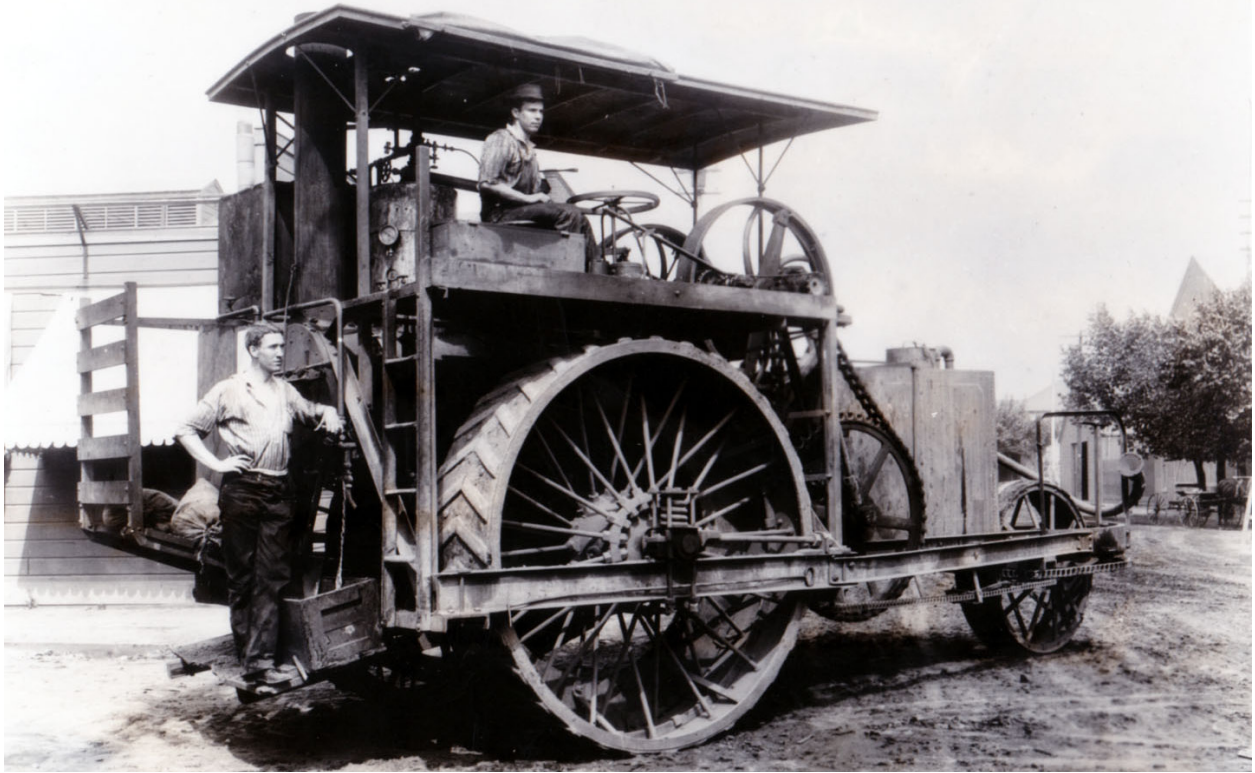


The W.G. Micke Independent Shipper facility (left) and William and Julia Micke's residence (right) on Cherokee Lane, in Lodi, ca. 1950.

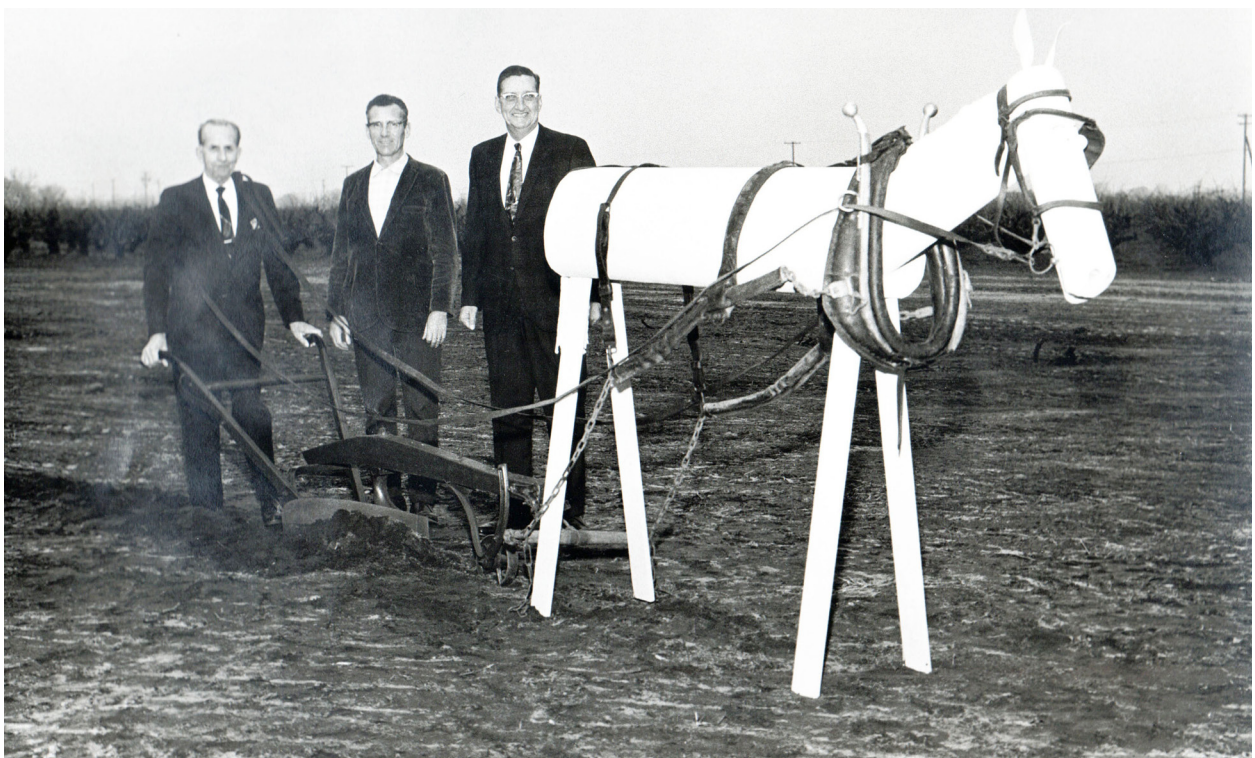


Woodcarving of the original San Joaquin County Historical Museum logo.

The San Joaquin Historian

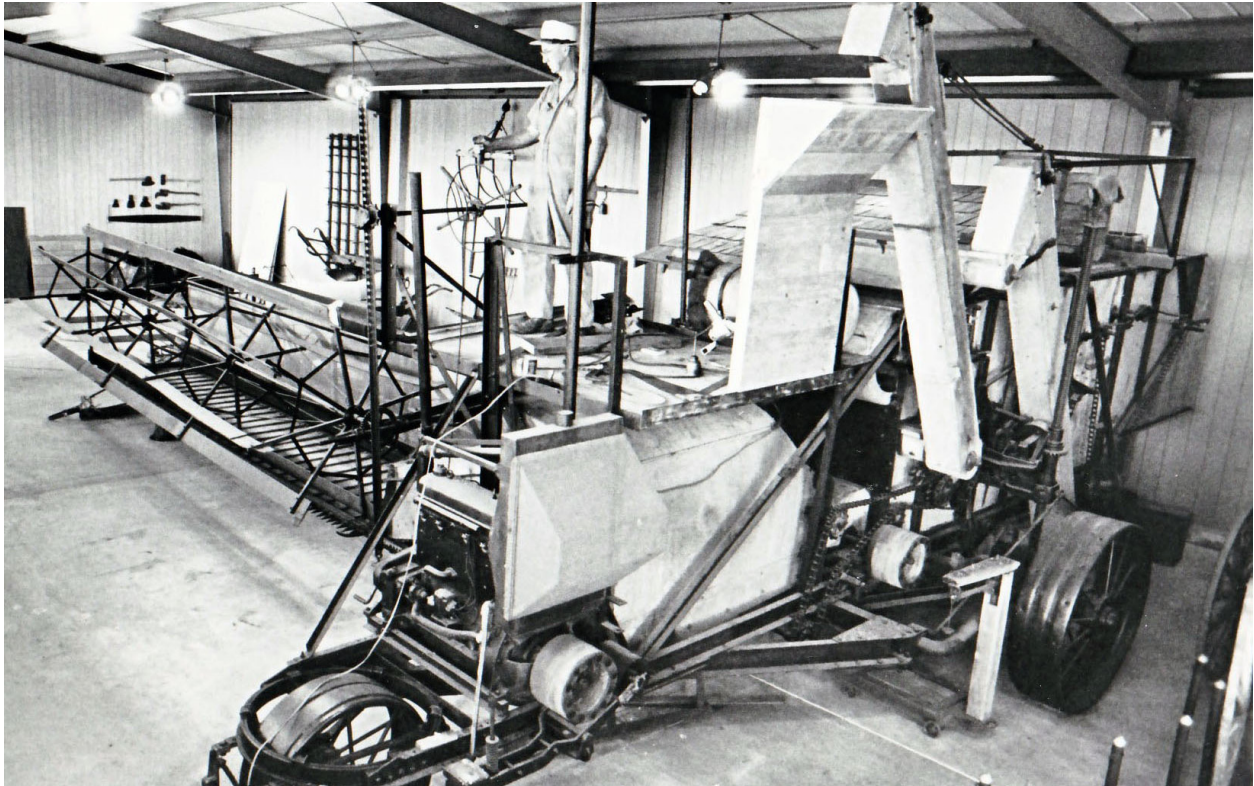


Parker Holt and Russell S. Springer pose on an early Holt steam-powered traction engine, No. 44, built in Stockton in 1902. This photograph was the first donation to the Museum's collections, in 1966.



On January 7, 1970, County Supervisor Vernon Lehman, Micke Grove Park Superintendent James Fahey, and Historical Society President Robert Angermeier break ground for the 4,000-square foot Micke Building. The building was financed by the estate of William G. Micke.

Inception: 1950s–1970s



An early view of the Micke Building as the exhibits began to take shape. The centerpiece is a 1928 Holt Combined Side Hill Harvester Model No. 30. It was purchased new in 1928 for \$1,500 and used on the Orr Ranch near Farmington to harvest grain.



Executive Director Medora Johnson leads students from John Tyler School of Stockton on a tour of the Micke Building on June 2, 1972. The building had been open only a year.

The San Joaquin Historian



Docent Mary Thompson, first docent class, 1972, in the Micke Building.

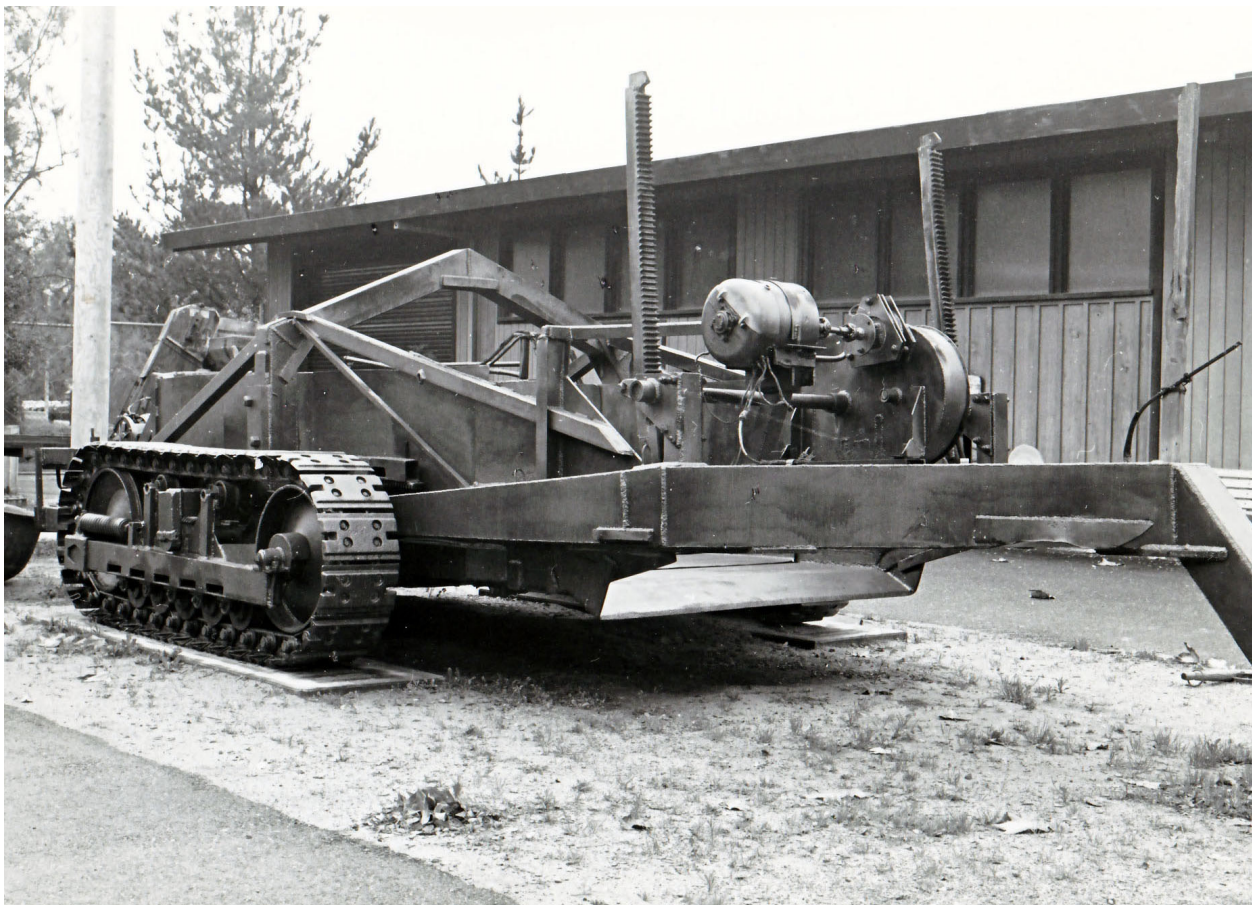


Katherine Mettler admires the Improved Davis Windmill in the Micke Building. It was built in Stockton by the Davis Regulating Windmill Company. The windmill was donated to the Museum in 1971 by Sterling and Esther Blewett. This windmill is thought to be the last surviving example of the Improved Davis Windmill.

Inception: 1950s–1970s



Left: Chuck Poulk and Ron Cecil, members of the Stockton Historical Bottle Society, enjoy wine tasting in the Julia Harrison Micke Memorial Building at the 1974 Annual Barbecue. Right: Medora Johnson and Floyd J. Locher at the premier showing of the Museum's Floyd J. Locher Tool Collection, 1975.



1925 LeTourneau Telescopic Scraper, made in Stockton and the second-oldest surviving LeTourneau scraper. Donated by Grace Nelson and currently exhibited in the Brown-Jones Building.

The San Joaquin Historian



Micke 100th birthday tree, February 1974. Left to right: Bill Lange, Eugene Micke (William G. Micke's nephew), and Viola Micke Moritz (William G. Micke's niece).



Preparing for Erickson Building construction, 1975.

Inception: 1950s–1970s



In 1976, the Museum's exhibit and office building, the Claude H. Erickson Building, was completed. The first phase of the 5,000 square foot building had two exhibit galleries, a lobby, and office and storage space. This photo was taken looking north from the Museum's parking lot.



Erickson Building dedication, 1976. County Supervisor George Barber is speaking.

The San Joaquin Historian



Hazel Wagener Woodson, a descendant of Claude Erickson's maternal great-grandfather, unveils the plaque inside the Erickson Building's front entrance. About 175 people attended the dedication on Sunday, September 26, 1976.



Robert Turner shows off the Liberty Harness Shop. It was built in 1976 with matching grant funds from the American Revolution Bicentennial Commission of California. On display are harness and saddle making tools from the Locher Tool Collection.

Inception: 1950s–1970s



The Calaveras Schoolhouse was donated to the San Joaquin County Historical Museum in 1976. The Alumni Committee saved it from demolition in 1975. Built in 1866, on property donated by Jonathan Dodge, the schoolhouse was in continuous use until 1958. Although it is an artifact in the Museum's collection, it is still used as a schoolhouse for our Valley Days and Pioneer School Day programs. Restoration of the Schoolhouse to its pre-1870 appearance was completed in 1986.



County Supervisor George Barber on tractor, with Supervisor Richard Yoshikawa (right) and San Joaquin County Historical Society President Robert Bonta guiding a plow for the groundbreaking ceremony of the Tree and Vine Building in 1977.

The San Joaquin Historian



The 1977 Annual Barbecue raised money for the Floyd J. Locher Tool Collection fund. The evening began with wine tasting in the Julia Harrison Micke Memorial Building. Dinner was served under the oak trees near the Memorial Building. During the event, guests viewed the exhibits and demonstrations at the Museum.



Aerial photograph of the museum complex in 1979. Counterclockwise (starting at the far right) are the Erickson Building, Delta Building, Micke Building, Calaveras Schoolhouse (above the Micke Building), Blacksmith and Harness shops (to the right of the schoolhouse), remnant of Mr. Micke's Flame Tokay Vineyard, Tree and Vine Building, and Walled Garden (under construction).

Growth: 1980s



Milestones and Photographs

1980 – Curator Michael Bennett became the Museum’s second director after the death of its first director, Medora Johnson.

The James Clack Collection of tracked tractors was donated to the Museum: twenty-three Holt, Best, and Caterpillar tractors built between 1917 and 1935.

1981 – The Walled Garden was completed, a project of the Lodi Garden Club.

The Museum presented “The Golden Mountain” exhibition.

1982 – The Valley Days school program was established, a partnership among the Museum, teachers, parents and other volunteers. (The first year 300 students participated; during the 2014-2015 school year, 2,891 students from throughout the County participated.)

1983 – The Sunshine Trail living exhibition officially opened. Originally envisioned by Medora Johnson in 1971, it was a collaborative effort between the Museum and Soroptimists International of Lodi. It was designed by Mike Schneider to provide an experience for visually-impaired as well as sighted guests and was named after a quote by Helen Keller: “Keep your face to the sunshine and you cannot see the shadow.” The design portrayed habitats along a cross-section of California from the coastal redwoods, across the San Joaquin Valley, to the Sierra Nevada. (Renovations to the Sunshine Trail were completed in 2016.)

1984 – The San Joaquin County Sheriff’s Department donated a 1915 Patriot truck and a 1924 Model T Ford truck, restored at the Honor Farm under Sheriff Michael Canlis. (Now displayed in the McNeilly Building.)

A sundial, designed by artist Rowland Chaney as a memorial to Medora Johnson, was installed near the Calaveras School.

The Charles Weber “cottage” (Captain Weber’s original 1848 house) was moved to the Museum.

1985 – The Tree and Vine Building was dedicated, to focus on the history of orchards and vineyards in the County.

1986 – The Grandmother’s Trunk and Grandfather’s Toolbox school outreach programs were started and began traveling to classrooms throughout San Joaquin County.

The San Joaquin County Agricultural Hall of Fame was created. (Now presented at the Museum in the Rosen Building and in the lobby of the Robert J. Cabral Agriculture Center in Stockton.)

The Pioneer Family Register was established to honor families with a history of 100 years

Growth: 1980s

or more in San Joaquin County. The first families included in the register were: The Locke family, for whom Lockeford was named; the Woods family, from Woodbridge; the Jann family, whose predecessor worked for Capt. Weber; the Kincaid family, from Ripon; the Salmon family, from French Camp; and the Ohm and Fisk families, from Vernalis.

The Helen Weber Kennedy Gallery opened in the Erickson Building to preserve and exhibit artifacts donated by the family of Captain Charles Weber, founder of Stockton. It was dedicated by Helen Weber Kennedy's daughters: Helen Cahill, Katherine Cookson, Moira Holden, and Geraldine Cole.

The 1866 Calaveras School re-opened on the Museum grounds following months of restoration.

1987 – The Museum Docent Council published a cookbook for sale in the Museum gift shop.

The John Hammer, Sr. Tractor Exhibit Building was dedicated. (It is now the John Hammer, Sr. workshops building.)

1988 – The first Victorian Christmas Afternoon was held, the predecessor to Festival of Trees.

Ground was broken for the Gerald D. Kennedy Reference Library (archives) addition to the Erickson Building.

The Museum Mercantile (gift shop)/Museum entrance building was built.

The current Historical Society and Museum logo was adopted.



The Pacific Fruit Express ice car is lowered onto tracks north of the Tree and Vine Building in 1980. Built in 1957, the car is forty-five feet long and weighs 59,500 pounds. Ice was placed into ice bunkers at each end of the rail car. Fans mounted above the ice moved the air to keep produce and other goods cold.

Growth: 1980s



Dedication of the Walled Garden, October 1981. Museum Director Michael Bennett (left), Esther Bender of the Lodi Garden Club, and Supervisor George Barber (right).



Dedication of the James Clack Tractor Collection on June 20, 1981. It includes twenty-three Best, Caterpillar, and Holt tractors built between 1917 and 1935.

The San Joaquin Historian



In the early 1980s, Alice Dee looks at a map of the Sunshine Trail, while Helen Trethewey and Corell Smith plant a tree.

Growth: 1980s



Visitors enter the gates of the Sunshine Trail on its opening day, May 23, 1983.



Docent Charlyn Lauchland gives a tour of the Sunshine Trail to a blind girl on opening day, May 23, 1983.



A visitor admires a man's Chinese court robe from the Qing Dynasty (1644-1911), known as a *chi-fu*. The robe was part of the exhibit, "The Golden Mountain," which opened on February 15, 1981.

Growth: 1980s



On February 15, 1981, the exhibit “The Golden Mountain” opened. The opening ceremony featured a performance by the Stockton Lion Dance Group and other cultural dance groups.



On November 4, 1984, Fisher Brothers House Moving Company transported Charles Weber’s first home in Stockton to the Museum, where staff and volunteers restored it to its appearance in 1848 and developed an area of the Museum’s campus to simulate Weber Point.

The San Joaquin Historian

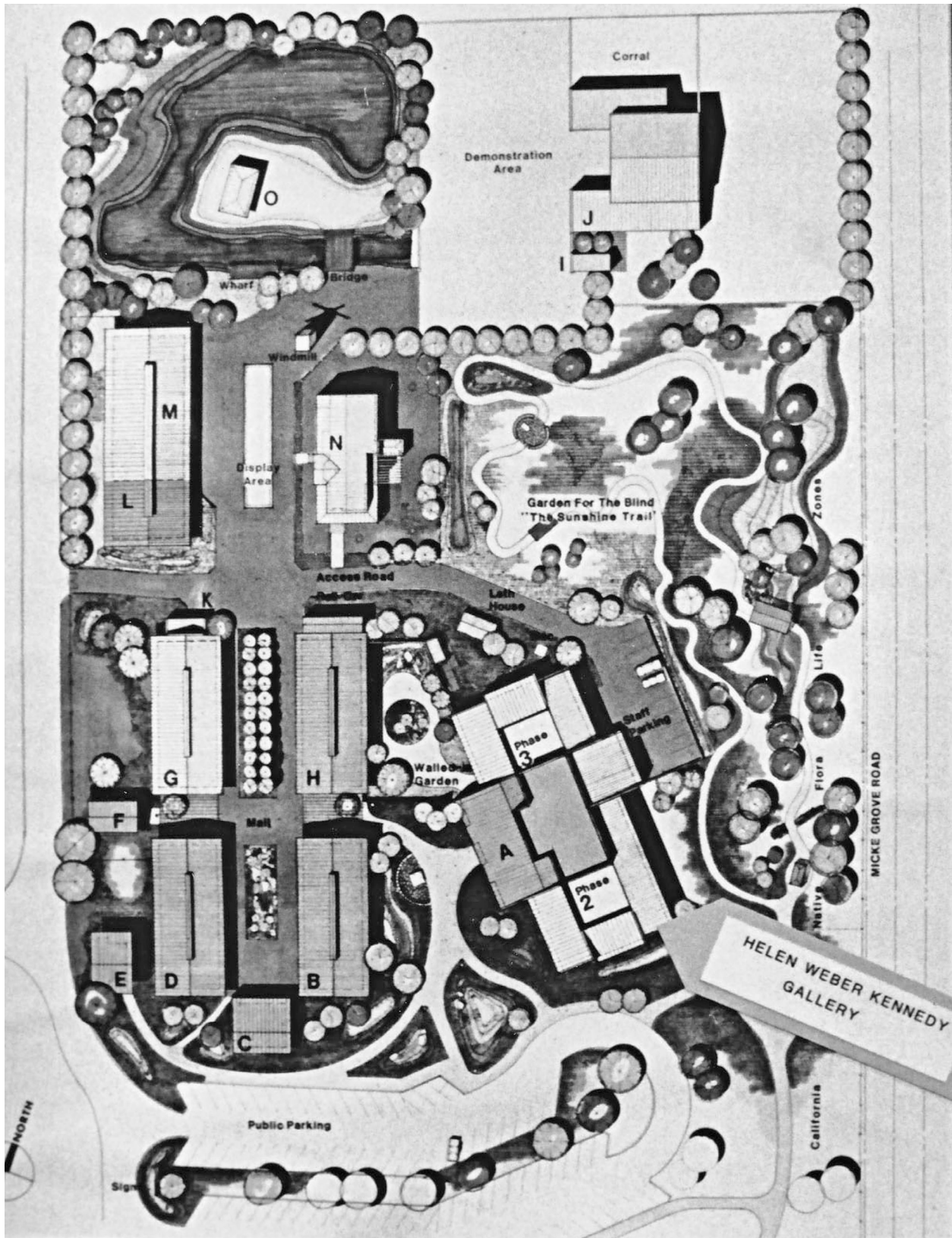


Groundbreaking ceremony for the Helen Weber Kennedy Gallery addition, September 12, 1984. Among those at the ceremony were San Joaquin County Historical Society trustees, Supervisor George Barber, and Helen Weber Kennedy's daughters: Peggy Cahill, Katherine Cookson, Moira Holden, and Geraldine Cole.



Helen Weber Kennedy Gallery opening, 1986.

Growth: 1980s



Map of the Museum's master plan (ca. 1984) shows two new additions to the Erickson Building. Phase two added the Helen Weber Kennedy Gallery, which included re-created rooms from the Julia Weber House. Phase three added the Gerald Kennedy Research Library (archives).

The San Joaquin Historian

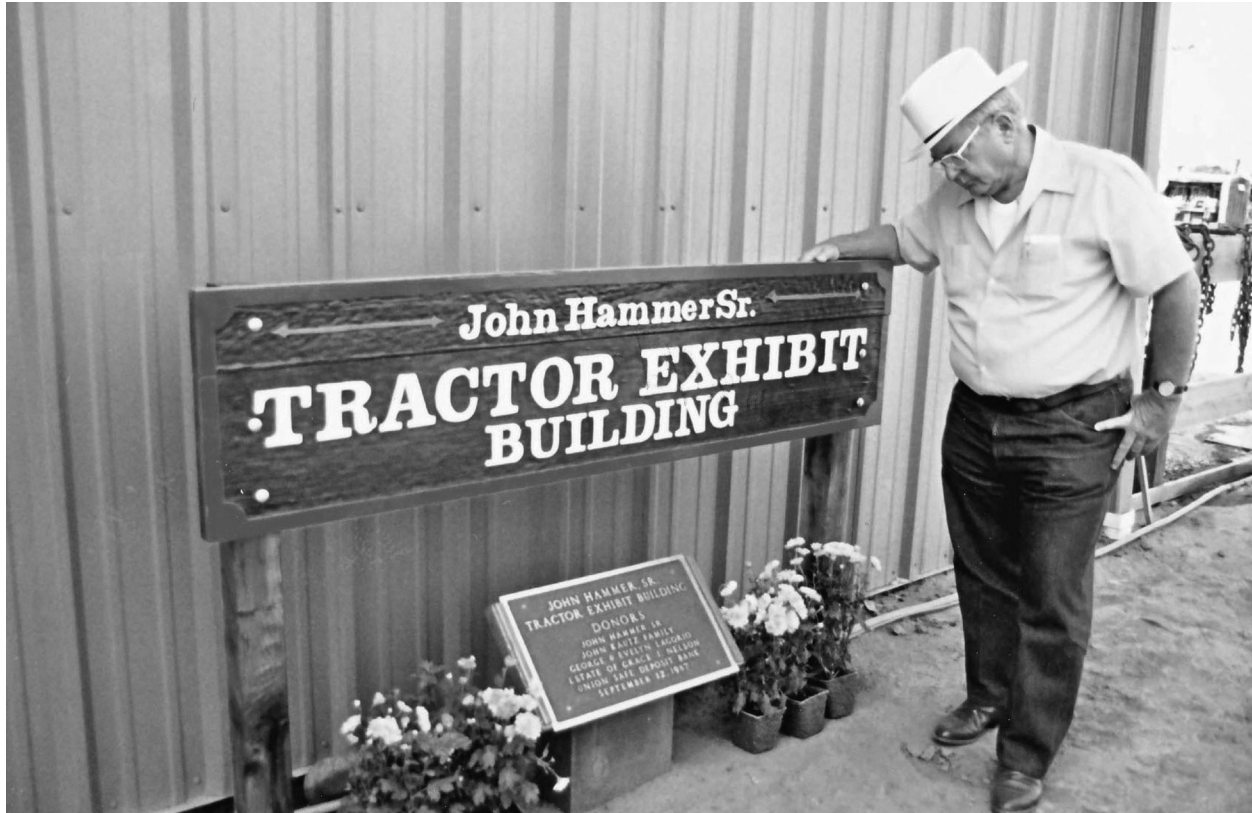


The Tree and Vine Building was completed in 1977, but did not open with exhibits until 1985. The exhibits focus on the orchards and vineyards of the County's agricultural history.

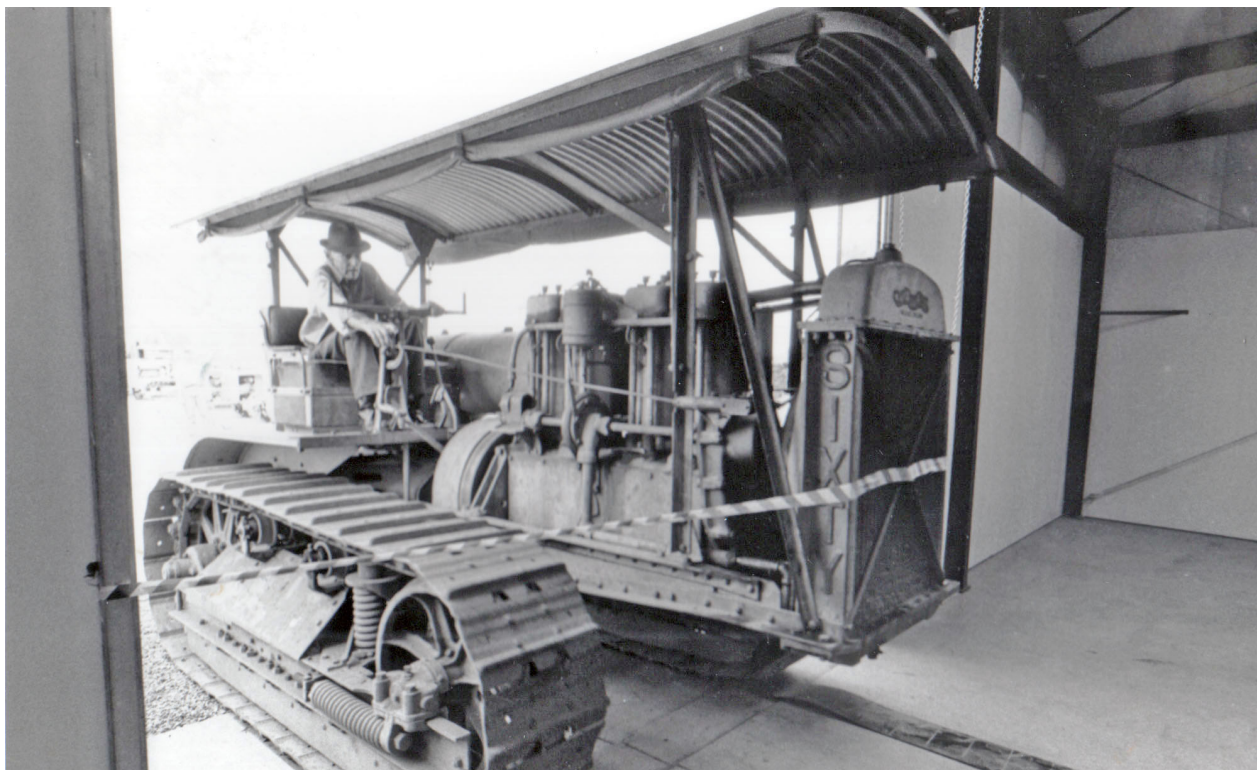


On September 5, 1986, at the Annual Barbecue, the restored Calaveras Schoolhouse opened to the public. Built in 1866, it underwent significant work to restore it to its pre-1880 appearance. The work included straightening walls, reinforcing frames, replacing the roof, rebuilding windows, restoring the tongue and groove fir floors, and refinishing the interior walls.

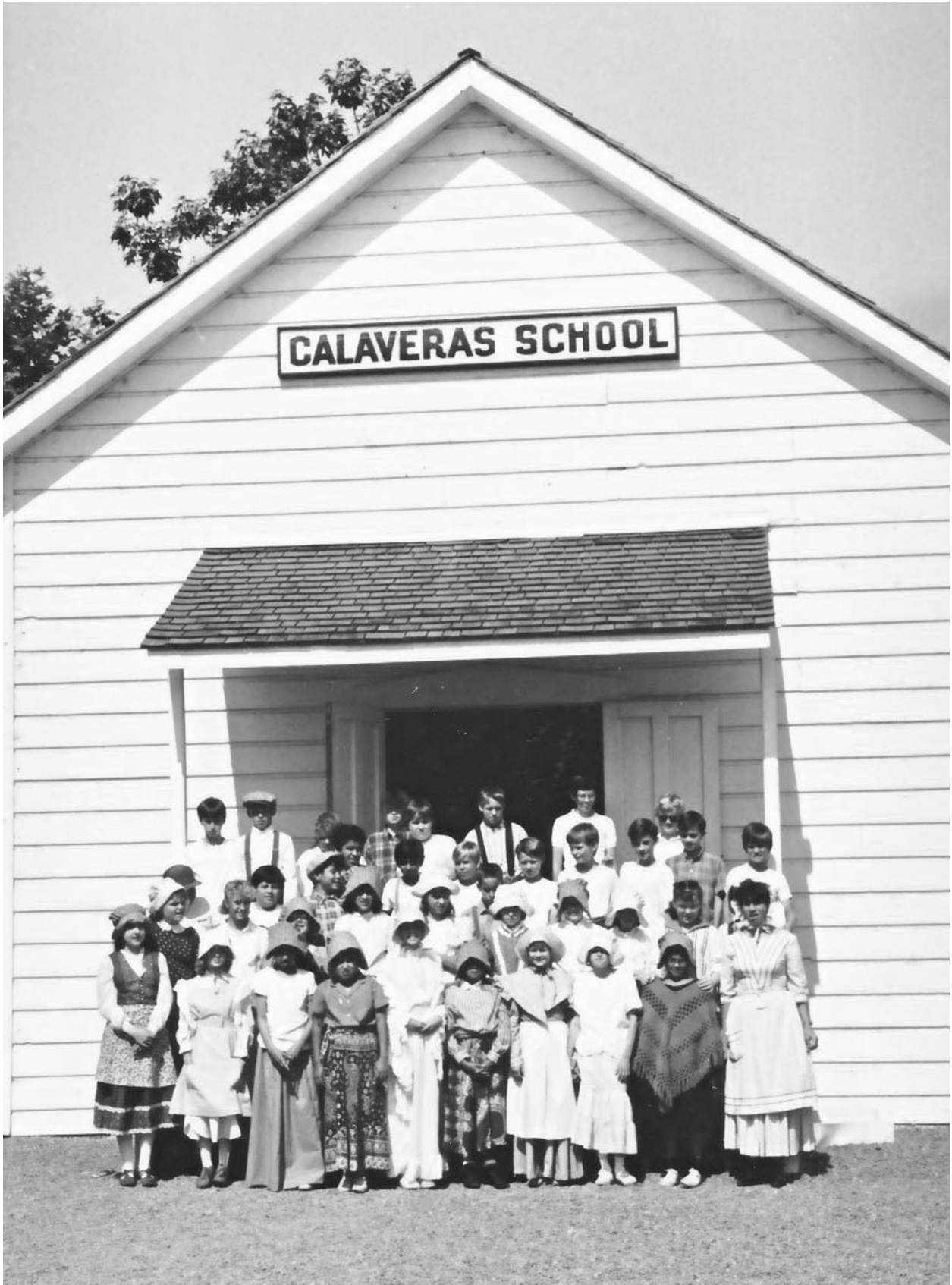
Growth: 1980s



On September 12, 1987, the Museum dedicated the John Hammer, Sr. Tractor Building (now the tractor restoration shop). It was made possible by donations from John Hammer, Sr., Mr. and Mrs. George Lagorio, the John Kautz Family, the Estate of Grace Nelson, and Union Safe Deposit Bank.



John Hammer, Sr. Tractor Building dedication, 1987. John Hammer, Sr. driving a Caterpillar Sixty into the building.



Valley Days class from May 1987.

Growth: 1980s



On February 1, 1989, the ground was broken for the Gerald D. Kennedy Research Library (archives). Pictured are the Kennedy sisters (left to right: Peggy Cahill, Geraldine Cole, and Moira Holden) with County Supervisor George Barber.

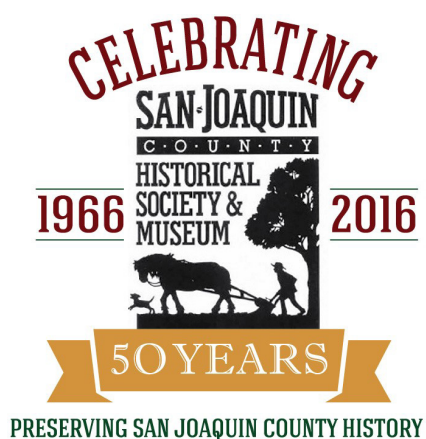


The Lodi Promenaders square dancing group entertains visitors at the 1989 Annual Barbecue and Country Fair.



Irvin Baker of Ripon shows his 1913 Oil Pull Rumely Model F tractor at the Museum's Annual Barbecue and Country Fair in 1989.

Program Development: 1990s



PRESERVING SAN JOAQUIN COUNTY HISTORY

Milestones and Photographs

- 1990 – The Golden Acorn Award was created to recognize individuals, groups, or businesses for outstanding service furthering the goals and programs of the Historical Society and Museum. (See Appendix 5, below.)
- 1991 – The 1848 Charles M. Weber home and garden opened to the public. The Gerald D. Kennedy Reference Library (archives) in the Erickson Building formally opened, too.
- The first Celtic *Ceilidh* (“Kay-Lee”), an all-day Celtic music and dance festival, was held at the Museum.
- 1992 – The Museum acquired a Stockton-built 1918 Samson Sieve-Grip 30X Tractor. (It is now exhibited in the Rosen Building.)
- The first Groovin’ in the Grove fundraiser for the Museum and Zoological Society was held.
- Festival of Trees, a two-day event to support the Museum’s education programs, replaced the prior Victorian Christmas Afternoon.
- 1993 – The Print Shop, used for Valley Days and other programs, was built.
- 1995 – The first Springtime on the Farm event was held at the Museum.
- The Pioneer School Day education program was established, using the 1866 Calaveras School. (During the 2014-2015 school year 1,487 students from throughout the County participated.)
- 1997 – The Loafing Shed, used for Valley Days activities, was constructed. Funding for the project was given by the Antone E. and Marie F. Raymus Foundation.
- 1998 – The Museum celebrated California’s Sesquicentennial with an exhibit for children called “GOLD!”
- 1998 – A LeTourneau Tournapull earthmoving tractor was donated to the Museum by Mrs. John F. Blakemore of Goleta. (It is now exhibited in the Brown-Jones Building.)
- Delores Levy donated portraits of William and Julia Micke to the Museum. (They are now exhibited in the Erickson Building.)
- 1999 – The Museum hosted the traveling exhibit, “GOLD FEVER!” as part of the California Sesquicentennial celebration.
- “Wagons Ho!” and “Springtime on the Farm” were combined as a state sesquicentennial celebration. The California Sesquicentennial Wagon Train of 90 wagons, 500 mules and horses, and 200 riders, stopped at Micke Grove Park.

Program Development: 1990s



Weber Homesite opening in May 1991. From left are Moira Holden, Peggy Cahill, Supervisor George Barber, Geraldine Cole, Katherine Cookson, and Gertrude Weber.



Young descendants of Charles Weber cut the ribbon at the Charles M. Weber Homesite and Garden dedication on May 18, 1991.

The San Joaquin Historian



Stockton-built 1918 Samson Sieve Grip Model 30X tractor, which the Museum acquired in 1992. (Currently exhibited in the Rosen Building.)



Children learn how to do laundry the old-fashioned way at Springtime on the Farm.

Program Development: 1990s



Dressed in 1950s era clothing, these women are dancing to the sounds of Jimmy Limbaugh and his Society Orchestra at the first Groovin' in the Grove in 1992. The dinner and dance was a fundraiser for the Historical Society and Micke Grove Zoological Society as a joint celebration of their thirty-fifth and twenty-fifth birthdays.



Making biscuits during Valley Days in 1994.



The Mickle Grove Zoo shares a bird of prey with those attending the 1994 Groovin' in the Grove dinner and dance to benefit both the Historical Society and the Zoo.

Program Development: 1990s



Mrs. Claus (Delores Harr) gives cookies to visitors in the Tree and Vine Building, Festival of Trees, 1995.



Aerial view, looking west, of the Museum grounds in April 1995. The Museum had yet to expand west and north to its present boundary. In the upper area of the photo is William G. Micke's Flame Tokay grape vineyard (now the Agricultural Equipment Center). Near the center of the photo is the John Hammer, Sr. Tractor Building. At the lower right corner of the photo is the Weber cottage, which opened in 1991.



Santa listens carefully to the Christmas wishes of a young girl at Festival of Trees, 1998.



Students attending Valley Days in 1998 learn how to plant a garden.

Program Development: 1990s



A LeTourneau Tournapull and Carryall arrive at the Museum and are unloaded by tractor restoration volunteers George Linn and Elmer Anderson, while Museum Director Michael Bennett looks on. The equipment was developed by Robert G. LeTourneau, who built earthmoving equipment in Stockton beginning in the 1920s.



California's Sesquicentennial Wagon Train, which included ninety wagons, 500 mules and horses, and 200 riders arrives at Micke Grove Park on June 26, 1999.

The San Joaquin Historian



A visitor stops to talk with assayer, gunsmith, and attorney Jay Lawson during Springtime on the Farm. On June 26, 1999, the Museum hosted Springtime on the Farm and Wagons Ho! The same day, California's Sesquicentennial Wagon Train, a celebration of California's 150 years of statehood, stopped at Micke Grove Park. The day included gold panning, demonstrations, and games.

Expansion: 2000s



Milestones and Photographs

2000 – The Historical Society received a \$100,000 grant from The James Irvine Foundation to fund the Living History Camp for eighth graders in the Lodi Unified School District.

The Society held a dinner to raise money for the construction of agriculture equipment exhibit buildings.

The Museum was re-accredited by the American Association of Museums.

2001 – The Museum hosted the traveling exhibit “Awakening from the California Dream: An Environmental History,” the first major photography exhibition to document and explore environmental changes in California. It was sponsored by the California Council for the Humanities and the Oakland Museum of California.

Fisher Brothers House Moving Company moved the 1892 Julia Weber House from West Lane to the Museum.

The San Joaquin County Historical Society was honored as Grand Marshal for the Lodi Grape Festival Parade.

2002 – The Museum completed the first phase of the restoration and preservation of the exterior of the Julia Weber House.

Ground was broken for the Agricultural Equipment Center complex of exhibit buildings.

A new exhibition, “Hunters and Gatherers: Food Ways of San Joaquin County’s First People, the Yokuts and Miwok,” opened in the Native American Gallery of the Erickson Building. (The “Native Peoples” exhibition was updated and expanded in 2015.)

Museum visitors helped create a paper Freedom Quilt in response to the 9/11 attack. The quilt was sent to New York City to be included in the future 9/11 museum.

Volunteers completed restoration of the girls’ outhouse from Grant School (near Lockeford), and it was displayed at the Museum behind the Calaveras School.

Alumni of the Calaveras School held a reunion at the Museum.

2003 – A 1927 Graham Brothers truck, built in Stockton, was donated to the Museum by Grant Fox. (It is now featured in the “Innovators in Agriculture” exhibition in the Cortopassi-Avansino Building.)

The Museum hosted, “Ansel Adams: Inspiration and Influence,” a traveling exhibit developed by the Oakland Museum of California.

Lunch with Julia Weber, a benefit for the restoration of the Julia Weber House, was held.

Expansion: 2000s

The “Pieces of the Past Quilt Show” exhibition displayed fifty quilts from the Museum’s collection.

- 2004 – “The Foundries of San Joaquin County” exhibition, developed in collaboration with the California Foundry History Institute, opened in the Delta Building.

The Museum hosted the Smithsonian Institution traveling exhibition, “Key Ingredients: America By Food.” The Museum Docents created a cookbook, “Cooking with Our Cultures – It’s About Tradition” for sale in the Museum Mercantile (gift shop).

The First Annual Golf Tournament was held at the Micke Grove Golf Links. The tournament benefitted the San Joaquin County Historical Museum and the Micke Grove Zoological Society.

San Joaquin County Historical Society celebrated its fiftieth year.

- 2005 – Chinese opera costumes from the Museum’s collections were loaned to the San Francisco Performing Arts Library and Museum for their exhibition, “Painted Men: Chinese Opera Backstage.”

The Denim and Diamonds western dinner dance and auction was held to benefit the San Joaquin County Historical Society and Micke Grove Zoological Society.

- 2006 – The San Joaquin County Historical Museum celebrated its fortieth year.

The Agricultural Equipment Center (McNeilly, Rosen, Brown-Jones, and Cortopassi-Avansino buildings) was dedicated.

The Museum hosted “Precious Cargo: California Indian Cradle Baskets and Childbirth Traditions,” a traveling exhibit developed by the Marin Museum of the American Indian.

The first “Sparks in the Park” with Randy Sparks, a dinner and music fundraiser for the San Joaquin County Historical Society and the Micke Grove Zoological Society, was held.

The golf tournament was renamed the Harvey Kessel Memorial Golf Tournament.

David Stuart was hired as the third executive director of the San Joaquin County Historical Society and the Museum.

- 2007 – The Museum hosted the traveling exhibit “Gold Fever! The Untold Stories of California’s Gold Rush.” Museum maintenance staff built a cut-away miner’s cabin for children.

Huell Howser filmed at the Museum a portion of the Lodi episode of his series “Road Trip with Huell Howser.”

- 2008 – The exterior of the 1957 Pacific Fruit Express railcar was restored.

The Museum received a grant from the Lodi Lions Club, as part of their “Lions Love Lodi” program, to rehabilitate the Sunshine Trail. In addition to the financial gift, members of the Lodi Lions and Tree Lodi volunteered time to assist with the project.

The Museum received a grant from The James Irvine Foundation for a two-year project,

The San Joaquin Historian

The Artistic Heritage of San Joaquin County, to highlight traditional and contemporary arts and crafts of ethnic/cultural groups in the County.

A Plein Air Art Camp for students from Tracy, Franklin, McNair, Lincoln Unified, St. Mary's, Tokay, and Lodi High Schools was taught at the Museum by Gil Dellinger. The program was supported by the Cortopassi Family Foundation.

The Museum hosted, "Lewis and Clark Revisited: A Trail in Modern Day," a traveling exhibition of photos created by contemporary photographer, Greg MacGregor.

The traveling exhibition "Bear in Mind: The Story of the California Grizzly" made its Northern California premier at the Museum. It was developed by the Bancroft Library, UC Berkeley, and Heyday Books.

Historical Society members helped document Lodi's Japantown through the statewide project, Preserving California's Japantowns, the first statewide project to document historic resources from pre-World War II Japanese/Japanese-American communities.

2009 – The Museum Docent Council started From Farm to Fork, an education program for pre-school through second graders from throughout the County.

The Museum received a Conservation Assessment Program (CAP) grant. The program of the Heritage Preservation and Institute of Museum and Library Services provided for two expert consultants to review and provide recommendations on the care of the Museum's collections and historic structures.

The Museum hosted the traveling exhibition, "Sing Me Your Story, Dance Me Home: Art and Poetry from Native California" (California Indians).

The Historical Society participated in California's Living New Deal Project, an initiative by the California Historical Society, UC Berkeley's Institute for Research in Labor and Employment Library, and the California Studies Center. The project documented New Deal projects throughout California.

Stockton Sunrise Rotary held its annual gourmet wine and food tasting event at the Museum for the first time.

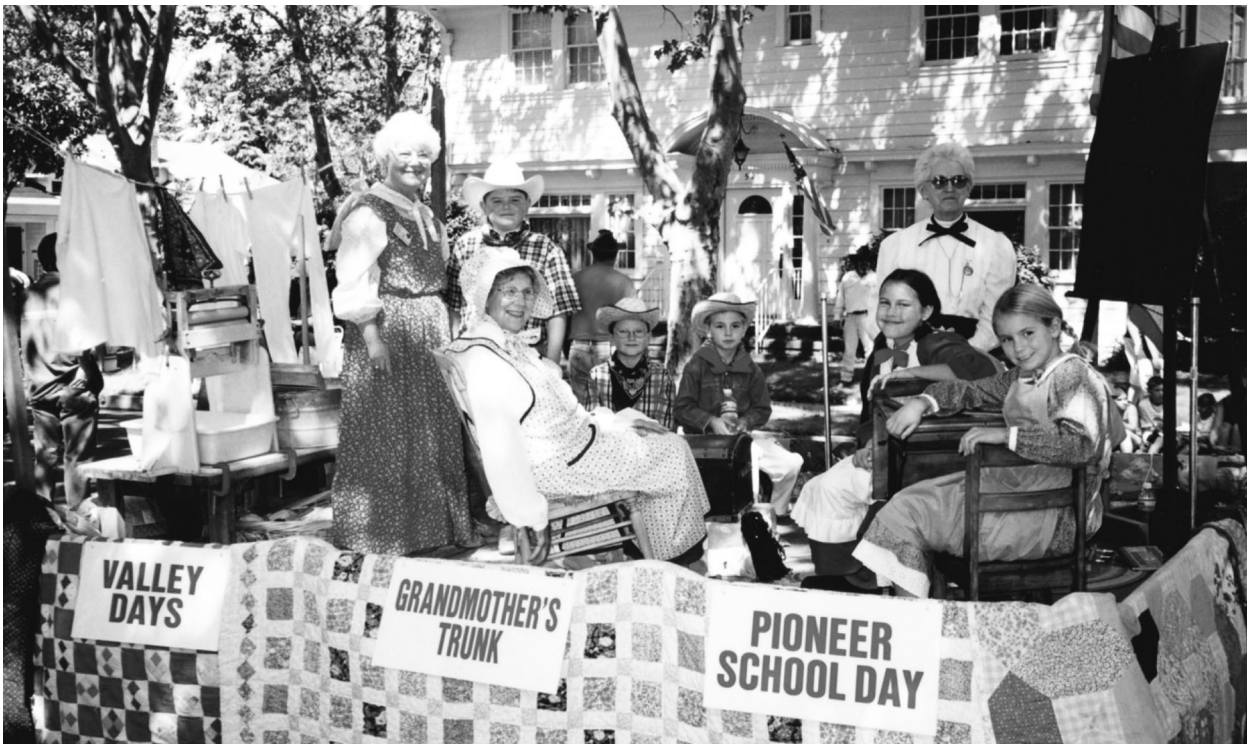
Agricultural Hall of Fame interactive kiosks were unveiled at the Museum and in the lobby of the Robert J. Cabral Agriculture Center in Stockton.

The Historical Society/Museum joined Facebook.

Expansion: 2000s



On June 30, 2001, the Julia Weber House arrives at the Museum from its location on West Lane. The Fisher Brothers House Moving Company had previously moved the house from Weber Point to West Lane in 1901.



In 2001, the San Joaquin County Historical Society was chosen as Grand Marshal for the Lodi Grape Festival Parade. Represented on the float are the Museum's education programs of Valley Days, Grandmother's Trunk, and Pioneer School Day. The docents (left to right) are Lorene Freggiaro, Helen Trethewey, and Yvonne Ankele.



Docent Craig Ankele escorts Miss Julia Weber (Dorothy Mulvihill) around the Museum grounds during Festival of Trees 2002.

Expansion: 2000s



On July 26, 2003, the Museum hosted Lunch with Julia Weber (Dorothy Mulvihill) to raise money for the Julia Weber House. Attending the luncheon were Julia Weber's great niece, Helen Weber Holden Gladsky, and her daughter, Kate.



In 2004, Museum Youth Camp campers take time from their busy schedule for a group photo in front of the Walled Garden. MY Camp was a two-week program consisting of a week of history and a week of science for children ages five through ten, led by Robin Wood, education coordinator (far left), and Gary Nightengale, curator of education (far right).



Tim Hachman, dressed as Uncle Sam, gives a presentation on the history of the American Flag at the 2005 Docent Dinner.

Expansion: 2000s



MY Camp campers catch bugs in Micke Grove Park's Pixley Slough during science week, 2006.



Claude Brown prepares lunch at the Museum's fortieth anniversary celebration in 2006.

Expansion: 2000s



Beginning in 2006, “Sparks in the Park,” featuring Randy Sparks and the New Christy Minstrels, entertained guests and raised money for the Museum. Pictured here are (left to right): Becky Jo Benson, Randy Sparks, and Jennifer Lind.



The Ag Equipment Center complex was dedicated in 2006. This photo shows the Rosen Building (left) and the Brown-Jones Building (right).

The San Joaquin Historian



Construction of a cut-away miner's cabin in the Erickson Building as part of the "Gold Fever!" exhibit in 2007. Pictured (left to right) are Yvonne Ankele, Mary Ann Blomgren, Ron Van Gundy, and Tyler Mason.



In October 2007, Huell Howser (in dark glasses) visited the Museum for his PBS series "Road Trip with Huell Howser."

Expansion: 2000s



A young girl fills her pail at the water pump during Springtime on the Farm, 2007.



Docent Christi Weybret demonstrates her roping skills, 2008.

Expansion: 2000s



Exterior restoration of the Pacific Fruit Express railcar, 2008.



In 2008, the Museum received a grant from the James Irvine Foundation to fund a two-year project, The Artistic Heritage of San Joaquin County, to highlight traditional and contemporary arts and crafts of ethnic and cultural groups in the County. Pictured here is a woman dressed in a kimono performing a traditional Japanese dance.

The San Joaquin Historian



In 2008, the Museum received a \$10,000 grant from the Lodi Lions Club as part of its “Lions Love Lodi” program. In addition to financial support, volunteers from the Lodi Lions Club and Tree Lodi worked at the Museum trimming trees and shrubs along the Sunshine Trail.



David Beckman, volunteer blacksmith, labors at the anvil, 2007.

Expansion: 2000s



In September 2008, the Museum hosted the traveling exhibit, “Bear in Mind: The Story of the California Grizzly.” The exhibit taught visitors about the now-extinct California grizzly bear and featured historical objects, facts, and interactive activities for all ages.

The San Joaquin Historian



Visitors to Springtime on the Farm get a school lesson from Mistresses Prilla McGregor and Cynie Downs in the Calaveras Schoolhouse, 2007.



Artist Gil Dellinger teaches students from Tracy, Franklin, McNair, Lincoln Unified, Saint Mary's, Tokay, and Lodi High Schools about plein air painting. The Plein Air Art Camp was made possible by the Cortopassi Family Foundation.

Expansion: 2000s



Poet Silvia Ross (Chuckcansi Yokuts), left, and basketmaker Kathy Wallace (Karuk/Yurok/Hoopa Valley), right, did gallery programs for the “Sing Me Your Story” exhibit in 2009.



In 2009, the Museum unveiled a new Agricultural Hall of Fame kiosk on its campus. This kiosk made it possible to search for honorees by name, location, crop, or reason for recognition, and by year of induction. A second kiosk is located at the Robert J. Cabral Agricultural Center in Stockton. Pictured here are inductees Gersh Rosen (left), Dean McNeilly (second from right), Rosemarie Woods (right), and others at the dedication.

The San Joaquin Historian



Two young boys race peddle tractors around the orchards in the Museum's From Farm to Fork education program. From Farm to Fork teaches children preschool through second grade where their food comes from. Museum docents developed the program in 2009.

Maturation: 2010s



Milestones and Photographs

2010 – The Museum hosted the traveling exhibition, “Good Manners: Everyday Etiquette Past and Present,” supplemented with artifacts from the Museum collections. Public programming included a series of etiquette classes for children. The Museum Docent Council held a Good Manners tea party, with proceeds supporting the Museum’s education programs.

The Valley Days school program celebrated its twenty-fifth year.

San Joaquin County Assessor’s plat books from 1876 to 1911, in the Museum archival collections, were digitized and put online for public use.

The estate of Gerald Barrett donated a 1919 Holt 75 Tractor to the Museum. A full restoration began to get the tractor back to running condition. (It will be featured in the earthmoving equipment exhibition in the Brown-Jones Building.)

The Yosemite Club in Stockton, California’s oldest chartered club, disbanded and donated to the Museum historical records, photographs, and artifacts.

2011 – The Brown-Jones Building, previously an open-sided pole barn, had exterior walls constructed so it could house the earthmoving equipment exhibition.

The American Society of Mechanical Engineers (ASME) presented a plaque to the Museum for designation of the Fresno Scraper as a Mechanical Engineering Landmark. (The plaque will be included in the earthmoving equipment exhibition in the Brown-Jones Building.)

The UC Cooperative Agricultural Extension of San Joaquin County donated photographs and archival materials to the Museum.

The Museum received a \$499,650 grant, part of the \$93 million Nature Education Facilities Program, funded by a 2006 bond measure (Prop 84). The grant project included the expansion of the Native Peoples Gallery in the Erickson Building, rehabilitation of the Sunshine Trail, and the creation of a Delta Water Path.

The Museum Docent Council held a Vintage Car Show as part of the “Raise the Barn” campaign for an education support building.

The American Alliance of Museums (AAM; formerly American Association of Museums) re-accredited the Museum.

The Historical Society digitized and put online maps and other material related to property ownership and water rights in San Joaquin County.

2012 – The California Preservation Program awarded a grant to the Historical Society for pro-

Maturation: 2010s

fessional assessment of the Museum's archives and library preservation needs.

The San Joaquin County Obituary Index Project was completed, a collaborative effort including the Stockton-San Joaquin County Public Library, the San Joaquin Genealogical Society, Delta College, Family Search, and the Historical Society.

The Museum Docent Council hosted a Classic Car Show and Craft Fair fundraiser for the "Raise the Barn" campaign for an education support building.

A Pickin' and Sippin' wine and bluegrass fundraiser was hosted by the Museum Docent Council for the "Raise the Barn" campaign.

- 2013 – Restoration of the 1859 freight wagon began by Marcus Wagon Works of Marysville. (The wagon is now featured in the "Settlers" exhibition in the Erickson Building.)

The Smithsonian traveling exhibition, "The Way We Worked," made its California debut at the Museum. The exhibition was supplemented with the San Joaquin County history of manufacturing and industry, agriculture and canning, early twentieth century labor disputes, and New Deal era projects.

A replica AeroMotor windmill was installed near the Charles Weber cottage, part of the "Delta Water Path" exhibition funded by the Nature Education Facilities grant.

- 2014 – An exhibition at the Museum featured the contents of the Lodi Union High School time capsule/cornerstone and commemorated the 100th anniversary of the construction of the building (now Hutchins Street Square).

The Museum hosted the traveling exhibit "Singing the Golden State," developed by the Society of California Pioneers.

The San Joaquin Farm Bureau celebrated its 100th anniversary with a dinner at the Museum.

The Museum hosted the traveling exhibition, "Art of Survival: Enduring the Turmoil of Tule Lake." In addition to forty framed prints of objects relating to Japanese internment, the exhibition featured objects borrowed from the San Joaquin County Japanese-American community and the Sacramento State University Archives.

Construction began on the "red barn" education support building.

The "Pioneer Homestead" hands-on exhibit opened in the Children's Gallery in the Erickson Building.

The County of San Joaquin Historic Records Inventory Project was completed, led by Museum Archivist Leigh Johnsen.

- 2015 – The Museum hosted the traveling exhibition, "California Woman Suffrage." Objects relating to California woman's suffrage were borrowed from California State Parks and the University of the Pacific Special Collections.

The Museum dedicated the "Trappers and French Camp" exhibit, the "Settlers" exhibition, and the Morse-Bewley Pioneers Gallery in the Erickson Building.

The San Joaquin Historian

“Delta Grandeur,” a photography exhibition of the Sacramento-San Joaquin Delta by Rich Turner, premiered at the Museum. (It became a rental exhibition touring California, managed by Exhibit Envoy.)

Work began on the “Innovators in Agriculture” exhibition in the Cortopassi-Avansino Building.

The expanded and updated “Native Peoples” exhibition in the Erickson Building was dedicated. It was funded by the Nature Education Facilities Program, created by the 2006 Clean Water Bond Act, and with donations in memory of Richard Beecher Salmon.

The Ledbetter Family Barn (“red barn”) education support building was dedicated.

2016 – The Museum celebrated its fiftieth year preserving and presenting the history of San Joaquin County.

The Museum dedicated the “Innovators in Agriculture” exhibition in the Cortopassi-Avansino Building. The exhibition was funded by the Cortopassi Family Foundation.

The Museum created exhibit panels for the 1848 Charles Weber house and gardens. The four panels were funded by the C.A. Webster Foundation and the Melvin Hieb and Virginia Hieb Charitable Foundation.

The golf tournament name was changed to honor Andy Focacci.

The renovated Sunshine Trail living exhibition of habitats that have shaped our history and the new Delta Water Path were dedicated. The exhibitions were funded by the Nature Education Facilities Program.

Maturation: 2010s



The 1848 Charles Weber cottage, ca. 2010.



Docent Pat Neu looks on as students and chaperones at Pioneer Farmfest 2010 try their luck at gold panning.

The San Joaquin Historian



In 2010, the estate of Gerald Barrett, of Antelope, California, donated a 1919 Holt 75 to the Museum. After full restoration, it will be featured in the Brown-Jones Building.



In 2010, a MY Camp camper grinds corn at the loafing shed to make cornbread.

Maturation: 2010s



The Historical Society celebrated the twenty-fifth anniversary of Valley Days in 2010. Society members experienced the same activities as Valley Days students. Here, museum docents Harley Becker and Tom Goad teach rope making to guests.



Docent Yvonne Ankele gives the “Five Finger Lesson” to Historical Society members at the Valley Days twenty-fifth year celebration, 2010.



Enclosing the Brown-Jones Building with siding, 2011.



Left to right: San Joaquin County Supervisor Larry Ruhstaller, Claude Brown, Supervisor Ken Vogel, and William Adams, Jr. with unidentified representatives of the American Society of Mechanical Engineers (ASME) at dedication of Fresno Scraper, 2011.

Maturation: 2010s



For more than ten years, Rocki Ramsey (left, in hat) and her mules have given thousands of wagon rides to visitors at Festival of Trees. Casey, her border collie, enjoys riding shotgun with the kids. December 2011.



In 2011, Museum staff and volunteers refurbished this Caterpillar Thirty tractor for children to climb aboard and explore. Construction of the pad and steps was one of many Eagle Scout projects at the Museum.



Commodore Robert Stockton (Bart Bird) talks with a young visitor at Festival of Trees, 2011.

Maturation: 2010s



Docent and trustee Marie Medford peddles ice cream bars at the docent's car show, 2012.

The San Joaquin Historian



The 1859 Elliott-Morse Family freight wagon leaves the Museum for restoration in spring 2013. Most of the original wood was restored, whereas the seat, wheels, and bed of the wagon box were rebuilt.



In April 2013, tractor restoration volunteers and museum maintenance staff mount the restored engine onto the 1919 Holt 75 tractor frame.

Maturation: 2010s



The California debut of the Smithsonian Institution's exhibition "The Way We Worked," 2013.



In November 2013, after months of restoration, the 1859 Elliott-Morse Family freight wagon returns to the Museum. Staff members Mike Mason and Ron Van Grundy move the wagon into place in the Erickson Building.

The San Joaquin Historian



First-place winning foursome at the 2014 Harvey Kessel Memorial Golf Tournament. Pictured, from left, are Gary Koepplin, Cory Semer, John Stroh, and Jim Sturman.



Aerial photograph of the Museum, looking north, in 2014. The Erickson Building is in the lower right corner. (Image courtesy of Visit Stockton.)

Maturation: 2010s



Dr. Ross Bewley at the dedication of the Morse-Bewley Gallery and “settlers” exhibition, 2015.



Museum members Veray Wickham (left) and Jill Hatanaka explore the “Caring for the Land” section of the new Native Peoples Gallery at the opening reception on August 20, 2015.



Executive Director David Stuart talks with tribal elder Mildred Burley of the California Valley Miwok Tribe (left) and Rose Mose of the Calaveras Band of Miwuk at the Native Peoples Gallery opening in August 2015.



“Red barn” education support building construction, 2015. (Later dedicated as the Ledbetter Family Barn.)

Maturation: 2010s



Museum visitors Bobbie Delva and her grandson, Matthew Marini, enjoy the hand tools exhibition in the Delta Building.

The San Joaquin Historian



Opening of the “Delta Grandeur” exhibit, 2015.



Ledbetter Family Barn exterior, 2015.

Maturation: 2010s



Ledbetter family members at the dedication of the Ledbetter Family Barn, 2015.



The Museum's tractor restoration volunteers take a break from restoring a 1938 unstyled John Deere A Tractor. Julian Bava donated it in 1988.



In January 2016, a new permanent exhibit opened in the Cortopassi-Avansino Building. “Innovations in Agriculture” features innovations in cultivating and processing asparagus, canning tomatoes, cherries, dry beans, and walnuts, as well as fresh produce “truck farming.” It was funded by the Cortopassi Family Foundation.



The asparagus and timeline areas of the “Innovations in Agriculture” exhibition, 2016.

Maturation: 2010s



UC-Blackwelder tomato harvester in the canning tomatoes area of the “Innovations in Agriculture” exhibition, 2016.



The dry beans area of the “Innovations in Agriculture” exhibition, 2016.

The San Joaquin Historian



A portion of the cherries area in the “Innovations in Agriculture” exhibition, 2016.



A portion of the walnuts area in the “Innovations in Agriculture” exhibition, 2016.

Appendix 1. Historical Society Mission and Program Statements

Mission Statement

The San Joaquin County Historical Society preserves and interprets the history of our county.

The Historical Society provides educational experiences that showcase the county's traditions of ingenuity, innovation, and invention—with emphasis on San Joaquin County's singular contributions in agriculture—to promote community pride, continued learning, and an appreciation of regional history among county residents and visitors.

Program Statement

The San Joaquin County Historical Society accomplishes its mission on behalf of the County of San Joaquin by:

- Preserving historic buildings, documents, and objects;
- Operating the San Joaquin County Historical Museum;
- Presenting exhibits and programs; and
- Developing and disseminating publications and media.

Adopted by the Board of Trustees on December 10, 2008

Appendix 2. Historical Society Presidents

Willard Robinson 1954–55

Gertrude Kettelman 1955–56

Medora Johnson 1957–59

Amy Boynton 1959–61

Gladys Boynton 1961–63

Emmett Perry 1964–65

Hazel Pampel 1965–66

Naomi Carey 1966–68

F. A. McMasters 1968–69

Robert Angermeier 1969–71

Howard Letcher 1971–72

Ed Pico 1972–73

Celia Myers 1973–75

Robert Bonta 1975–76

Vivian Hughes 1976–77

Robert Bonta 1977–79

Dorothy Hays 1979–81

Olive Davis 1981–83

Jim Beardsley 1983–85

Howard Lewis 1985–88

Thomas Shephard, Sr. 1988–90

Howard Lewis 1990

Robert Shellenberger 1990–92

Timothy Hachman 1992–94

Gary Christopherson 1994–96

Craig Rasmussen 1996–98

Helen Trethewey 1998–2000

Christopher Engh 2000–2004

Elise Forbes 2004–2005

DeeAnne Gillick 2005–2009

Claude Brown 2009–2015

Jay Colombini 2015–

Appendix 3. Museum Docent Council Presidents

1976–80	Medora Johnson
1980–82	Dorothy Hayes
1982–86	Edna Smith
1986–88	Vesta Mason
1988–90	Lois Hillenbrand
1990–92	Bob Clotuu/Julia Gillespie
1992–94	Vesta Mason
1994–96	Helen Trethewey
1996–98	Al Johnson
1998–2000	Craig Ankele
2000–2002	Yvonne Ankele
2002–2004	Lorene Freggiaro
2004–2006	Marie Medford
2006–2010	Pat Neu
2010–2012	Jack Johnson
2012–2014	Mickie Flores
2014–2016	Cynie Downs

Appendix 4. Historical Society Honorees

Century Business Dinner Honorees

- 1992 *Lodi News-Sentinel*
- 1993 Bank of Stockton
- 1994 Bekins-Pacific Storage Company
- 1995 *The Stockton Record*
- 1996 Guaranty Bank (formerly Stockton Savings Bank)
- 1997 Union Safe Deposit Bank
- 1998 *Tracy Press*
- 1999 Saint Joseph's Regional Health
- 2000 On Lock Sam
- 2001 The Children's Home of Stockton
- 2002 Greater Stockton Chamber of Commerce
- 2003 Neumiller and Beardslee
- 2004 Saint Mary's High School
- 2006 Jack Tone Ranch
- 2007 Robinson's Feed

Legends of California Honorees

- 1999 Robert Mondavi
- 2000 Richard Cuneo, Sebastiani Vineyards
- 2001 Trinchero Family Vineyards
- 2002 Delicato Family Vineyard
- 2003 M and R Packing
- 2004 The Kautz Family
- 2005 Lodi-Woodbridge Winegrape Commission
- 2006 The Bogle Family
- 2007 F and M Bank
- 2008 Phillips Farms
- 2009 The Bank of Stockton

Notably San Joaquin Honorees

- 2013 Vino Farms – Ledbetter Family
- 2014 Mohr-Fry Ranches – Jerry Fry
- 2016 Claude Brown

Appendix 5. Golden Acorn Awardees

For outstanding service to the San Joaquin County Historical Society and Museum

1990

Dorothy Hays, Edna Smith, Fran Welch, Elwood and Celia Myers, Jim Beardsley, Harley Murray Inc., Soroptimist International of Lodi, John Hammer Sr., the Kennedy sisters.

1991

Mel and Nancy Davison, Rod and Marietta Homer, Ken and Alice Norton, Chiyo Shimamoto, Francis and Rooksie Stewart, Verna Wardrobe, Hart Wilson, Delicato Vineyards, General Mills, Bank of Stockton, Neumiller and Beardslee, Mr. and Mrs. Casey Moore, Mary Diel Thomason.

1992

Mary Leer, Chuck Welch, Floyd and Elva Dale, Bob Shellenberger, Guaranty Savings Bank, Lodi/Tokay Rotary Club.

1993

Leslie Crow, Howard C. Lewis, Al Johnson, Union Safe Deposit Bank, Stockton Rotary Club.

1994

Tim and Judi Hachman, Helen Trethewey, Robert F. McMaster, Amber Smith.

1995

Olive Davis, Ag Industrial Manufacturing Inc.

1996

MaryAnn Blomgren, Bill Cook, Carol Lee Cox, Lorene Freggiaro, Lodi Garden Club, Lois Owen.

1997

Marie Medford, Gersh Rosen, Peggy Fry, Daryl and Janice McNeilly, San Tomo Inc.

1998

Leona Athearn, Virginia Dietrich, Craig and Yvonne Ankele, Dean DeCarli, Mu Lambda Chapter of Delta Theta Tau Sorority.

Appendixes

1999

Peggy Ward Engh, Julia Gillespie, Delores Sayler Harr, Lois Hildenbrand.

2002

David Beckman, Caryl McClure, Clare Moran, Doris Musfelt.

2004

Ed Schwyn, Dorothy Mulvihill, Charlie Thompson, Helen Weber Holden, Rocki Ramsey.

2005

Loretta Hildebrand, Lowell Gearhart, Marlene Watson, DeeAnne Gillick.

2006

Elise Austin Forbes, Harold and Greg Womble, Charlie Pyle, Nick Jones, Sally Johnson, Kay Barbour, Marilyn Cook, Joanna Nightengale, Evie Olsen.

2007

Bob Condit, Christi Kennedy Weybret, Lisa Perry, Claude Brown, F and M Bank.

2008

Richard Grice, Gary Pizzi.

2013

Dean and Bea McNeilly, Carol Blais.

Index

- Adams, William, Jr., 70
- Aerial photographs of Museum (1979), 16; (1984), 27; (1995), 39; (2014), 76
- Aeromiller Windmill, 65
- Agricultural Equipment Center, 44, 45, 53
- Agricultural Hall of Fame, 18, 46, 61
- Ag Industrial Manufacturing, Inc., 90
- American Alliance of Museums, 64
- American Association of Museums (AAM), 4, 44. *See also* American Alliance of Museums
- American Society of Mechanical Engineers (ASME), 64, 70
- Anderson, Elmer, 41
- Angermeier, Robert, 8, 87
- Ankele, Craig, 48, 88, 90
- Ankele, Yvonne, on float, 47; works on exhibit, 54; gives lesson, 69; honored, 88, 90
- “Ansel Adams: Inspiration and Influence,” 44
- Athearn, Leona, 90
- Artistic Heritage of San Joaquin County, 57
- “Art of Survival: Enduring the Turmoil of Tule Lake,” 65
- “Awakening from the California Dream,” 44
- Baker, Irvin, 32
- Bank of Stockton, 89, 90
- Barbecues (1974), 11; (1977), 16; (1986), 28; (1989), 31, 32
- Barber, George, at dedications, 13, 21; at groundbreakings, 15, 26, 31; at opening, 35
- Barbour, Kay, 91
- Barrett, Gerald, 64, 68
- Bava, Julian, 81
- “Bear in Mind,” 46, 59
- Beardsley, Jim, 8, 90
- Becker, Harley, 69
- Beckman, David, 58, 91
- Bekins-Pacific Storage Company
- Bender, Esther, 21
- Bennett, Michael, 18, 21, 41
- Benson, Becky Jo, 53
- Bewley, Ross, 77
- Bicentennial Quilt, 5
- Bird, Bart, 72
- Blais, Carol, 91
- Blewett, Esther, 10
- Blewett, Sterling, 10
- Blomgren, Mary Ann, 54, 90
- Blood, Julie, frontispiece
- Bogle Family, 89
- Bonta, Robert, 15, 87
- Boynton, Amy, 4, 87
- Boynton, Gladys, 87
- Brown, Claude, portrait, frontispiece; prepares meal, 52; at ceremony, 70; honored, 87, 89, 91
- Brown-Jones Building, mentioned 11; dedicated, 45, 53; enclosed, 64, 70
- Burley, Mildred, 78
- Cahill, Peggy, 26, 31, 36
- Calaveras School, moved , 5, 15; from air, 16; reopened, 19, 28; used, 30; outhouse re-

Index

- stored, 44; reunion, 44; interior, 60
- California Preservation Program, 64
- California Sesquicentennial, 34, 41, 42
- California Sesquicentennial Wagon Train, 41, 42
- “California Woman Suffrage,” 65
- Carey, Naomi, 4, 87
- Caterpillar tractors, 29, 71
- C.A. Webster Foundation, 66
- Cecil, Ron, 11
- Celtic *Ceilidh*, 34
- Chaney, Rowland, 18
- Charles M. Weber Cottage, donated, 18; moved, 25, dedicated, 34, 35, photo of, 67; from air, 39
- Children’s Home of Stockton, 89
- Chinese costumes, 24, 45
- Chinese dragons, 25
- Christopherson, Gary, 87
- Clack, James, 18, 21
- Claude H. Erickson Building. See Erickson Building
- Clotuu, Bob, 88
- Cole, Geraldine, 26, 31, 35
- Colombini, Jay, frontispiece, 87
- Condit, Bob, 91
- Conservation Assessment Program, 46
- Cook Bill, 90
- Cook, Marilyn, 91
- Cooking with Our Cultures*, 45
- Cookson, Katherine, 26, 35
- Cortopassi-Avansino Building, 45, 82
- Cortopassi Family Foundation, 46, 60, 66, 82
- Cox, Carol Lee, 90
- Crow, Leslie, 90
- Dale, Elva, 90
- Dale, Floyd, 90
- Davis, Olive, 87, 90
- Davis Windmill Company, 10
- DeCarli, Dean, 90
- Delicato Family Vineyard, 89, 90
- Dellinger, Gil, 46, 60
- Delta Building, 4, 16, 79
- “Delta Grandeur,” 66, 80
- Delta Water Path, 64
- Delva, Bobbie, 79
- Dietrich, Virginia, 90
- Divison, Mel, 90
- Divison, Nancy, 90
- Downs, Cynie, 60, 88
- Eagle Scouts, 71
- Elliott-Morse Family, 74, 75
- Engh, Christopher, 87
- Engh, Petty Ward, 91
- Erickson Building, constructed, 5, 12; dedicated, 13, 14; from air, 16, 76; on map, 27; interior, 54
- Facebook, 46
- Fahey, James, 8
- F and M Bank, 89, 91
- Ferguson, Robert, frontispiece
- Festival of Trees, replaces Victorian Christmas, 34; (1995), 39; (1998), 40; (2011), 71, 72
- Fisher Brothers House Moving Company, 25, 33
- Flores, Micke, 88
- Floyd J. Locher Tool Collection, premier, 11; fundraiser, 16; purchased, 5; displayed, 13; and Medora Johnson, 11
- Ford Model T, 18
- Forbes, Elise, frontispiece, 87, 91

Index

- “Foundries of San Joaquin County,” 45
Fox, Grant, 44
Freedom Quilt, 44
Freggiaro, Lorene, 47, 88, 90
Fresno Scraper, 64, 70
From Farm to Fork, 62
Fry, Jerry, 89
Fry, Peggy, 90
Funamura, Janwyn, frontispiece
- Gampp, Ute, frontispiece
Gearhart, Lowell, 91
General Mills, 90
Gerald D. Kennedy Reference Library, ground
 broken, 19, 31; opened, 34; on map, 27
Gillespie, Julie, 88, 91
Gillick, DeeAnn, 87, 91
Gladsky, Helen Weber Holden, 49
Gladsky, Kate, 49
Goad, Tom, frontispiece, 69
Gold! (exhibit), 34
Golden Acorn Award, 34
“Golden Mountain,” 18, 24, 25
Gold Fever! 34, 45, 54
Golf tournament, 45. See also Harvey Kessel
 Memorial Golf Tournament
“Good Manners: Everyday Etiquette,” 64
Graham Brothers truck, 44
Grandfather’s Toolbox, 18
Grandmother’s Trunk, 18
Greater Stockton Chamber of Commerce, 89
Grice, Richard, 91
Groovin’ in the Grove, 34, 37, 38
Guaranty Savings Bank, 90
Hachman, Judi, 90
Hachman, Timothy, frontispiece, 5, 87, 90
Hammer, John, Sr., 29, 90
Hammer Tractor Building, dedicated, 19;
 mentioned, 29, from air, 39; donated, 29
Hannasch, Monica, 5
Harley Murray Inc., 90
Harness Shop, 5, 16
Harr, Delores Sayler, 39, 91
Harvey Kessel Memorial Golf Tournament,
 45, 76
Hatanaka, Jill, 77
Hays, Dorothy, 87, 88, 90
Helen Weber Kennedy Gallery, 19, 25, 26
Herr, Delores Sayler, 90
Hieb Charitable Foundation, 66
Hillenbrand, Lois, 88, 91
Hillenbrand, Loretta, 91
Holden, Helen Weber, 91
Holden, Moira, 26, 31, 36
Homer, Marietta, 90
Homer, Rod, 90
Holt Manufacturing Co., steam engine, 8; har-
 vester, 9; 75 (tractor), 64, 68, 74
Holt, Parker, 8
Howser, Huell, 45, 54
“Hunters and Gatherers,” 44
- Improved Davis Windmill. See Davis Windmill
“Innovators in Agriculture,” dedicated, 66;
 opened, 82, 83, 84.
- Jack Tone Ranch, 89
James Irvine Foundation, 44, 45, 57
Japanese dancer, 57
Jimmy Limbaugh, 37
John Deere Tractor, 81
John Hammer, Sr. Tractor Building. See Ham-

Index

- mer Tractor Building
- Johnsen, Leigh, frontispiece
- Johnson, Alan, frontispiece, 88, 90
- Johnson, Jack, 88
- Johnson, Medora, dies, 18; honored, 88; starts Society, 4, 87; teaches, 9; and Floyd J. Locher, 11
- Johnson, Sally, 91
- Jones, Nick, 91
- Julia Harrison Micke Memorial Building, 11, 16
- Julia Weber House, 44, 47
- Kautz Family, 29, 89
- Kavanaugh, Robert, frontispiece
- Keller, Helen, 18
- Kennedy Gallery. See Helen Weber Kennedy Gallery
- Kennedy Reference Library. See Gerald D. Kennedy Reference Library
- Kettelman, Gertrude, 4, 87
- Koeplin, Gary, 76
- Lagorio, George, 29
- Lange, Bill, 12
- Lauchland, Charlyn, 23
- Lawson, Jay, 42
- Ledbetter Family Barn, construction, 65, 78; dedicated, 66; exterior, 80, 81
- Leer, Mary, 90
- Lehman, Vernon, 8
- Letcher, Howard, 87
- LeTourneau construction equipment, 11, 34, 41
- “Lewis and Clark Revisited,” 46
- Lewis, Howard, 87, 90
- Liberty Harness Shop, 13, 26
- Lind, Jennifer, 53
- Linn, George, 41
- Living New Deal, 46
- Loafing Shed, 34
- Locher Tool Collection. See Floyd J. Locher Tool Collection
- Lodi Garden Club, 90
- Lodi Grape Festival Parade, 44, 47
- Lodi Lions Club, 45, 58
- Lodi News-Sentinel*, 89
- Lodi Promenaders, 31
- Lodi/Tokay Rotary Club, 90
- Lodi-Woodbridge Winegrape Commission, 89
- Lunch with Julia Weber, 44, 49
- Machado, Michael, frontispiece
- M and R Packing, 89
- Marini, Matthew, 79
- Mason, Mike, frontispiece, 75
- Mason, Tyler, 54
- Mason, Vesta, 88
- McClure, Caryl, 91
- McGregor, Greg, 46
- McGregor, Prilla, 60
- McMaster, Robert F., 90
- McMasters, F. A., 87
- McNeilly, Bea, 91
- McNeilly, Dean, 61, 90, 91
- McNeilly Exhibition Building, 45
- McNeilly, Janice, 90
- Medford, Marie, 73, 88, 90
- Mettler, Kenneth J., frontispiece
- Micke Building. See William G. Micke Building
- Micke, Eugene, 12
- Micke Flame Tokay Vineyard, 16, 39
- Micke Grove Zoological Society, 37, 38, 45

Index

- Micke, William G., 7
Miller, Katherine, 10
Miller, Henry, frontispiece
Mohr-Fry Ranches, 89
Mondavi, Robert, 89
Moore, Casey, 90
Moran, Clare, 91
Moritz, Viola Micke, 12
Morse-Bewley Pioneers Gallery, 65, 77
Mose, Rose, 78
Mulvihill, Dorothy, 48, 49, 91
Museum Mercantile, 19
Museum Youth Camp. See MY Camp
Musfelt, Doris, 91
MY Camp (Museum Youth Camp), 50, 51, 68
Myers, Celia, 87, 90
Myers, Elwood, 90
- Native Peoples Gallery, 64, 66, 77
Nature Education Facilities Program Grant
(State of California), 64, 66
Nelson, Grace, 4, 11, 29
Neu, Pat, 67, 88
Neumiller and Beardslee, 89, 90
News and Notes, 4
Nightengale, Gary, 50
Nightengale, Joanna, 91
Norton, Alice, 90
Norton, Ken, 90
- Oil Pull Rumely tractor, 32
Olsen, Evie, 91
On Lock Sam, 89
Owen, Lois, 90
Pacific Fruit Express ice car, 20, 45, 57
Pampel, Hazel, 87
Patriot (truck), 18
Perry, Emmett, 87
Perry, Lisa, 91
Phillips Farms, 89
Pico, Ed, 87
“Pieces of the Past Quilt Show,” 45
Pioneer Family Register, 18
Pioneer Farmfest, 67
“Pioneer Homestead,” 65
Pioneer School Day, 34
Pizzi, Gary, 91
Plein Air Art Camp, 46, 60
Poulk, Chuck, 11
“Precious Cargo,” 45
Preserving California’s Japantowns, 46
Print Shop, 34
Pyle, Charlie, 91
- “Raise the Barn,” 64, 65
Ramsey, Rocki, 71, 91
Rasmussen, Craig, 87
Red Barn. See Ledbetter Family Barn
Reddish, Benjamin, Jr., frontispiece
“Road Trip with Huell Howser,” 45, 54
Robinson’s Feed, 89
Robinson, Willard, 4, 87
Rodman, Judy, frontispiece
Rosen Exhibition Building, 45, 53, 61
Rosen, Gersh, 90
Ross, Silvia, 61
Ruhstaller, Larry, 70
Saint Joseph’s Regional Health, 89
Saint Mary’s High School, 89
Salmon, Richard Beecher, 66

Index

- Samson tractors, 34, 36
- San Joaquin County Assessor's Plat Books, 64
- San Joaquin County Board of Supervisors, 6
- San Joaquin County Historical Society, seal and logo, 7, 19; anniversaries, 45, 69
- San Joaquin County Historic Records Inventory Project, 65
- San Joaquin County Obituary Index, 65
- San Joaquin Historian*, 4
- Santa Claus, 40
- San Tomo Inc. 90
- Schwartz, Beatrice, 5
- Schwyn, Ed, 91
- Semer, Cory, 76
- Settlers exhibit, 65, 77
- Shellenberger, Robert, frontispiece; 87, 90
- Shephard, Thomas, Sr., frontispiece, 87
- Shimamoto, Chiyo, 90
- "Singing the Golden State," 65
- "Sing Me Your Story," 46, 61
- Smith, Amber, 90
- Smith, Corell, 22
- Smith, Edna, 87, 90
- Society Orchestra, 37
- Soroptimist International of Lodi, 90
- "Sparks in the Park," 45, 53
- Sparks, Randy, 45, 53
- Springer, Russell S., 8
- Springtime on the Farm, started, 34, 36; (1999), 42; (2007), 60
- Stewart, Francis, 90
- Steward, Rooksie, 90
- Stockton, Robert, 72
- Stockton Historical Bottle Society, 11
- Stockton Lion Dance Group, 25
- Stockton Record*, 89
- Stockton Rotary Club, 90
- Stockton Sunrise Rotary, 46
- Stroh, John, 76
- Stuart, David, frontispiece, 45, 78
- Sturman, Jim, 76
- Sunshine Trail, constructed, 22; opens, 18, 23; rebuilt, 45, 58; rehabilitated, 64, 66
- Thomason, Mary Diel, 90
- Thompson, Charlie, 91
- Thompson, Mary, 10
- Tracy Press, 89
- Tree and Vine Building, groundbreaking, 15; dedicated, 18; from air, 16; interior, 28, 39
- Trethewey, Helen, at Sunshine Trail, 22; on parade float, 47; serves as president, 87; honored, 90
- Turner, Rich, 66
- Turner, Robert, 14
- UC-Blackwelder tomato harvester, 83
- UC Cooperative Agricultural Extension, 64
- Union Safe Deposit Bank, 29, 89, 90
- Valley Days, established, 18; anniversary, 64; students at, 30, 37, 40
- Van Gundy, Ron, frontispiece, 54, 75
- Victorian Christmas, 19. See also Festival of Trees
- Vine Farms, 89
- Vogel, Ken, 70
- Wagons Ho! 34, 42
- Wallace, Kathy, 61
- Walled Garden, 16, 18, 21
- Wardrobe, Verna, 90
- Watson, Marlene, 91

Index

- “The Way We Worked,” 65, 75
Weber Cottage. See Charles M. Weber Cottage
Weber, Gertrude, 35
Weber, Julia, 48, 49
Welch, Chuck, 90
Welch, Fran, 90
Weybret, Christi, 56, 91
Wickham, Veray, 77
William G. Micke Building, opened, 4; ground
 broken, 8; interior, 9, 10; from air, 16
Wilson, Hart, 90
Womble, Greg, 91
Womble, Harold, 91
Wood, Robin, frontispiece, 50
Woods, Rosemarie, 61

Yosemite Club, 64
Yoshikawa, Richard, 15

San Joaquin County Historical Society, Inc.

P.O. Box 30

Lodi, CA 95241-0030

Return Service Requested

Non-Profit
Org.
U.S. Postage
PAID
Permit No. 48
Lodi, CA