

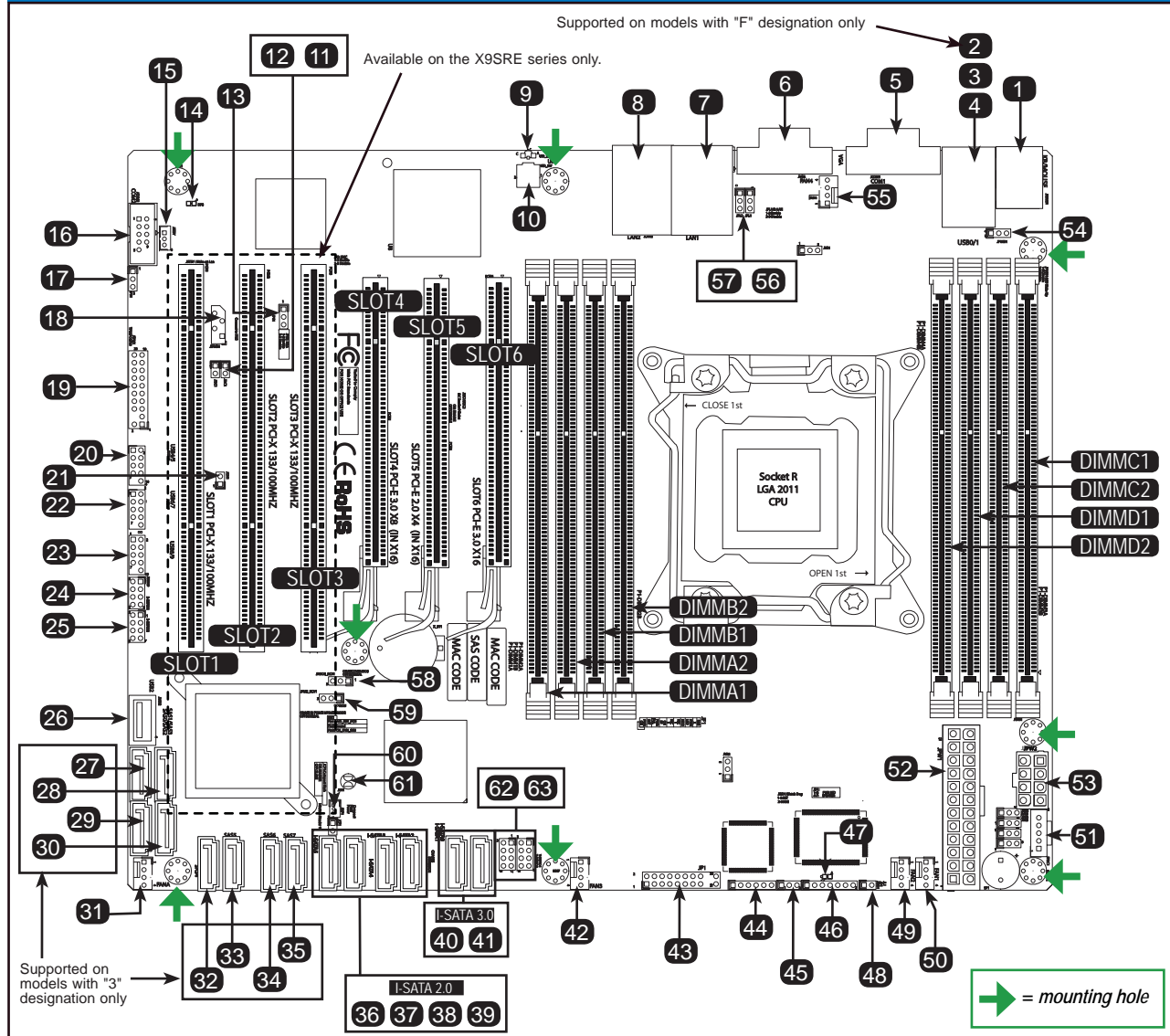
CONTACT INFORMATION

- www.supermicro.com (Email: support@supermicro.com)
- Manuals: http://www.supermicro.com/support/manuals
- Drivers & Utilities: ftp://ftp.supermicro.com
- Safety: http://www.supermicro.com/about/policies/safety_information.cfm

PACKAGE CONTENTS (Applies to individual-pack only)

- One (1) Supermicro Motherboard
- Eight (8) SATA Cables
- One (1) I/O Shield
- One (1) Quick Reference Guide

Motherboard Layout and Features



Jumpers, Connectors and LED Indicators

| Jumpers | | | |
|---------|-------------|----------------------------------|----------------------------------|
| 11,12 | JI2C2,JI2C1 | SMB to PCI-E Slots | On (Enabled) |
| 13 | JPG1 | Onboard VGA Enable | Pins 1-2 (Enabled) |
| 17 | JPB1 | BMC Enable (for "F" models only) | Pins 1-2 (Enabled) |
| 45 | JWD1 | Watch Dog Reset | Pins 1-2 (Reset) |
| 54 | JPU1 | USB Power Select | Pins 1-2 (Dual Power) |
| 56, 57 | JPL1,JPL2 | LAN1,LAN2 Enable | Pins 1-2 (Enabled) |
| 58 | JPBIOS1 | BIOS Recovery | Pins 1-2 (Normal) |
| 59 | JPME1 | Intel ME Mode Select | Pins 1-2 (Normal) |
| 61 | JBT1 | CMOS Clear | Short contact pads to reset CMOS |

| Connectors | | |
|----------------|--------------------|-----------------------------------------------------------|
| 1 | JKBMS1 | Backpanel Keyboard and Mouse Port |
| 2 | JLAN | IPMI LAN Port ("F" models only) |
| 3, 4 | USB 0/1 | USB 2.0 Port 1, USB 2.0 Port 2 |
| 5, 16 | JCOM1, JCOM2 | COM1 Backpanel Serial Port, COM2 Serial Port Header |
| 6 | JVGA | Backpanel VGA Port |
| 7, 8 | JLAN1, JLAN2 | Backpanel Gbit LAN Ports 1, 2 |
| 10 | UID_SW | Unit ID Switch |
| 15 | JSTBY1 | Legacy Wake on LAN header |
| 18 | JIPMB1 | System Management Bus Header for the IPMI Slot |
| 19 | JTPM1 | Trusted Platform Module (TPM) Header |
| 20,22,23 | JUSB 4/5, 6/7, 8/9 | Front Accessible USB Connections (via 3 Headers) |
| 21 | JOH1 | Overheat LED/Fan Fail |
| 24, 25 | 3-SGPIO1,3-SGPIO2 | Serial General Purpose I/O Headers for SAS |
| 26 | JUSB2 | Internal Type A USB port |
| 27-30, 32-35 | SCU0-7 | Internal Serial-Attached SCSI/SAS ports ("3" models only) |
| 31,42,49,50,55 | FAN A, FAN 3,2,1,4 | Internal Fan headers |
| 36,37,38,39 | I-SATA 5,4,3,2 | SATA 2.0 ports (3Gb/s) |
| 41, 40 | I-SATA 0/1 | SATA 3.0 ports (6Gb/s) |
| 43 | JF1 | Front Panel Control Header |
| 44 | JTAG1 | Factory Reserved |
| 46 | JD1 | Power LED / Speaker Header (Pins 4-7: External Speaker) |
| 48 | JL1 | Chassis Intrusion Header |
| 51 | JPI2C1 | Power Supply SMBus I2C Header |
| 52 | JPW1 | 24-pin Main ATX Power Connector |
| 53 | JPW2 | 8-pin Secondary Power Connector |
| 60 | JSD1 | Disk On Module (DOM) Power |
| 62,63 | T-SGPIO2,T-SGPIO1 | Serial General Purpose I/O Headers for SATA |

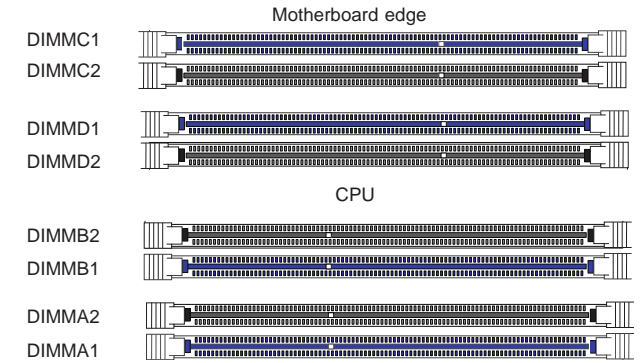
| LED Indicators | | | |
|----------------|---------|-------------------|--------------------------------|
| 9 | UID LED | UID (Unit ID) LED | Blue: Solid On UID: On |
| 14 | DP3 | IPMI Heartbeat | Green/Blinking BMC/IPMI Normal |
| 47 | DP2 | Power On LED | Green: Solid On System is On |

Memory Support

The X9SRi/X9SRE motherboard series supports up to 256GB of 1600/1066/1333 MHz ECC/Non-ECC DDR3 DIMMs in eight (8) memory slots (UDIMM/RDIMM).

Note: For memory optimization, use only DIMM modules that have been validated by Supermicro. For the latest memory updates, please refer to our website at <http://www.supermicro.com/products/motherboard>.

DIMM Memory Installation



Memory Population Guidelines

When installing memory modules, the DIMM slots should be populated in the following order: DIMMA1, DIMMB1, DIMMC1, DIMMD1 then DIMMA2, DIMMB2, DIMMC2, DIMMD2.

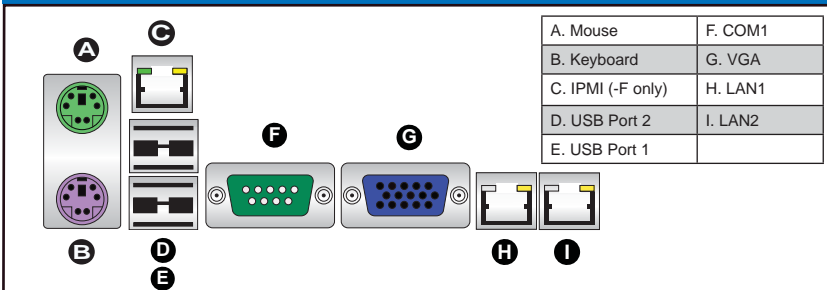
- Always use DDR3 DIMM modules of the same size, type and speed.
- Mixed DIMM speeds can be installed. However, all DIMMs will run at the speed of the slowest DIMM.
- The motherboard will support odd-numbered modules installed (1, 3, 5, or 7 modules). However, for best memory performance, install DIMM modules in pairs.

Recommended Population (Balanced)

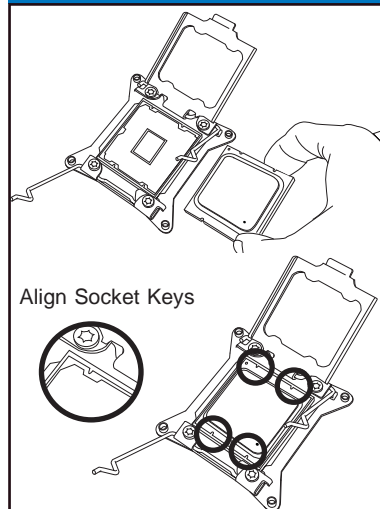
| DIMMA1 | DIMMB1 | DIMMC1 | DIMMD1 | DIMMA2 | DIMMB2 | DIMMC2 | DIMMD2 | Total System Memory |
|--------|--------|--------|--------|--------|--------|--------|--------|---------------------|
| | | | | | | | | 4GB |
| 2GB | 2GB | | | | | | | 8GB |
| 2GB | 2GB | 2GB | 2GB | | | | | 16GB |
| 4GB | 4GB | | | | | | | 8GB |
| 4GB | 4GB | 4GB | 4GB | | | | | 16GB |
| 4GB | 4GB | 4GB | 4GB | 4GB | 4GB | 4GB | 4GB | 32GB |

Note: Up to 256GB of memory are supported. See chapter 2 of the User Manual for complete memory population information.

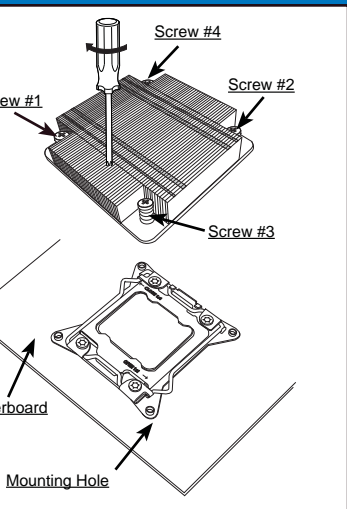
Back Panel IO Connectors



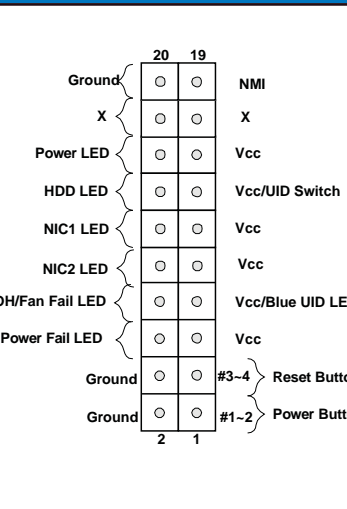
CPU Installation



Heatsink Installation



Front Panel Control (JF1)



Note: Graphics shown in this quick reference guide are for illustration only. Your components may or may not look exactly the same as drawings shown in this guide.

Note: Refer to Chapter 2 of the User Manual for detailed information on jumpers, connectors, and LED indicators.

Note: Refer to Chapter 2 of the User Manual for detailed information on memory support and CPU/motherboard installation instructions.