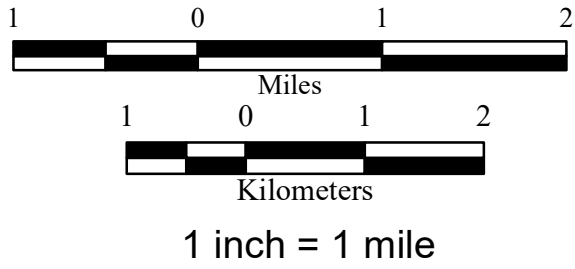
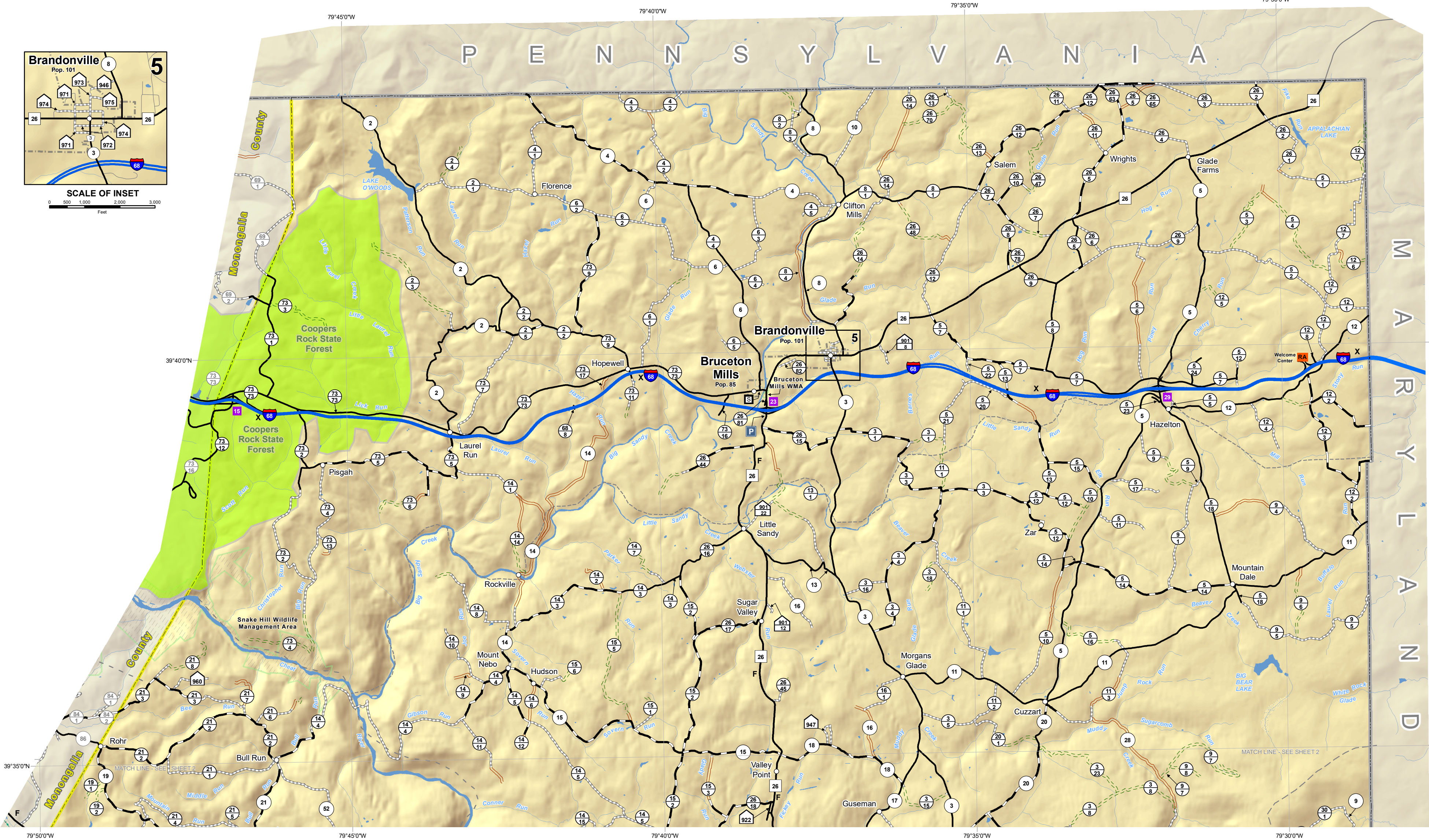


GENERAL HIGHWAY MAP  
**PRESTON COUNTY**  
**WEST VIRGINIA**

PREPARED BY  
WEST VIRGINIA DEPARTMENT OF TRANSPORTATION  
PLANNING DIVISION  
IN COOPERATION WITH  
US DEPARTMENT OF TRANSPORTATION  
FEDERAL HIGHWAY ADMINISTRATION



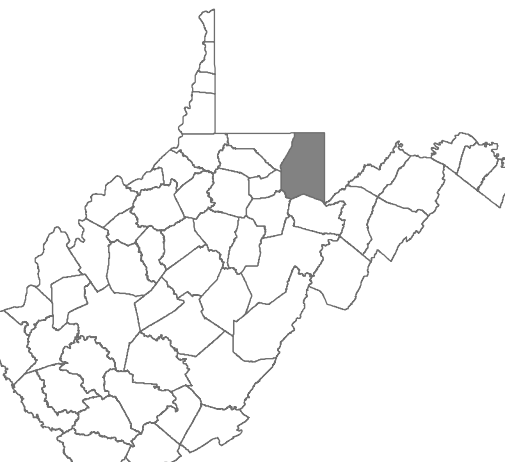
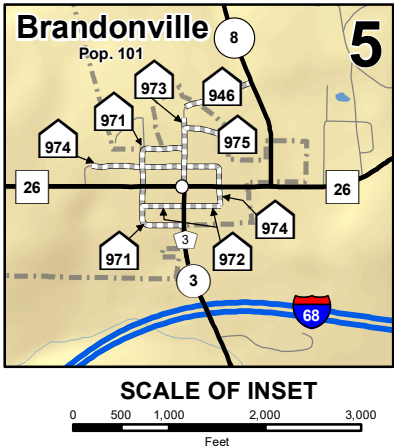
LEGEND	
<b>ROADS AND ROADWAY FEATURES</b>	<b>BOUNDARIES</b>
<b>SURFACE TYPES</b>	
Paved Road	County Boundary
Bituminous Road - Low Type	State Line
Gravel or Stone Road	Urban Areas
Graded and Drained Road	County Seat
Soil Surface Road - Dirt	Populated Places
Primitive Road	Incorporated Places
Unimproved Road	Tax District
<b>HIGHWAY SIGN SYSTEMS</b>	<b>CONSERVATION AND RECREATION</b>
Interstate Route	National Wildlife Refuge
US Numbered Highway	U.S. Fish and Wildlife Service
WV Numbered Highway	Wildlife Management Area
WV County Route	City or County Park
WV Home Access Route (HARP)	National Forests
Federal Aid Non-State (FANS)	State Park or Forest
WV State Park and Forest Route	National Parks
Main Street	Rails to Trails
City Streets	<b>STRUCTURES</b>
Interstate Exits	Tunnel
<b>FUNCTIONAL SYSTEMS</b>	<b>EDUCATIONAL AND PUBLIC SERVICE</b>
Expressway	Hospital
Trunkline	High School
Feeder	School K - 8
<b>AIRPORTS AND RAILROADS</b>	College or Educational Institution
Airport Runway	County Courthouse
Railroad	<b>DRAINAGE</b>
<b>WVDOT FACILITIES</b>	Streams
WVDOT County Headquarters	Major Rivers
Park and Ride	Lakes
Rest Area	Island/Intermittent water



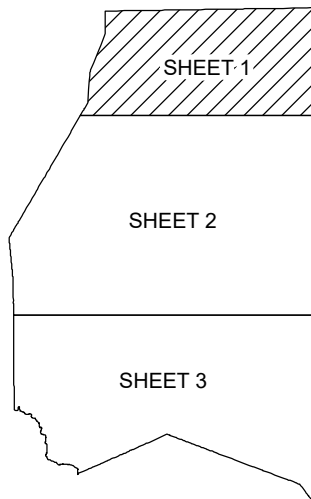
All routes are provided by West Virginia (WV) Department of Transportation. Urban Areas, corporation lines, and population data are from the U.S. Census Bureau for census years 2000 and 2010. Contributing sources include United States (U.S.) National Park Service, U.S. Forest Service, U.S. Geological Survey, WV Department of Environmental Protection, WV Division of Forestry, WV Division of Natural Resources, WV GIS Technical Center, WV Health Care Authority, WV Legislative Services, and WVU Natural Resource Analysis Center.

For further details please contact:

West Virginia Department of Transportation  
Division of Highways  
Planning Division  
Geospatial Transportation Information Section  
1900 Kanawha Blvd. East, Building 5  
Charleston, WV 25305  
(304) 558-9325



KEY MAP OF COUNTIES



KEY MAP OF SHEETS



Coordinate System: North American Datum of 1983, Universal Transverse Mercator Zone 17N (NAD\_1983\_UTM\_Zone\_17N)

This map is an illustration and is not intended for use in direct mensuration of real features on the surface of the earth or any other engineering design. The size of objects and distances between them are exaggerated for ease of use only. This map does not contain all or even most of the features found on the face of the earth in any given location. It only depicts those features found in the legend within its geographic area. The intended use of this map is for planning and simple location of features to within several hundred feet of their correct position on the face of the earth.

Last revision date: April 2019  
Road data as of: December 2018

This map was developed by the West Virginia Department of Transportation (WVDOT) Geospatial Transportation Information Section and is provided for general reference only. The WVDOT does not guarantee the accuracy, completeness, or currentness of any information presented and disclaims any warranties, whether expressed or implied. Users who rely on the information contained in this map do so at their own risk. The WVDOT and its agents will not be held liable for inaccurate, outdated, or otherwise erroneous information, or for damages arising, whether directly or indirectly, from use or misuse of this map or any data contained herein.