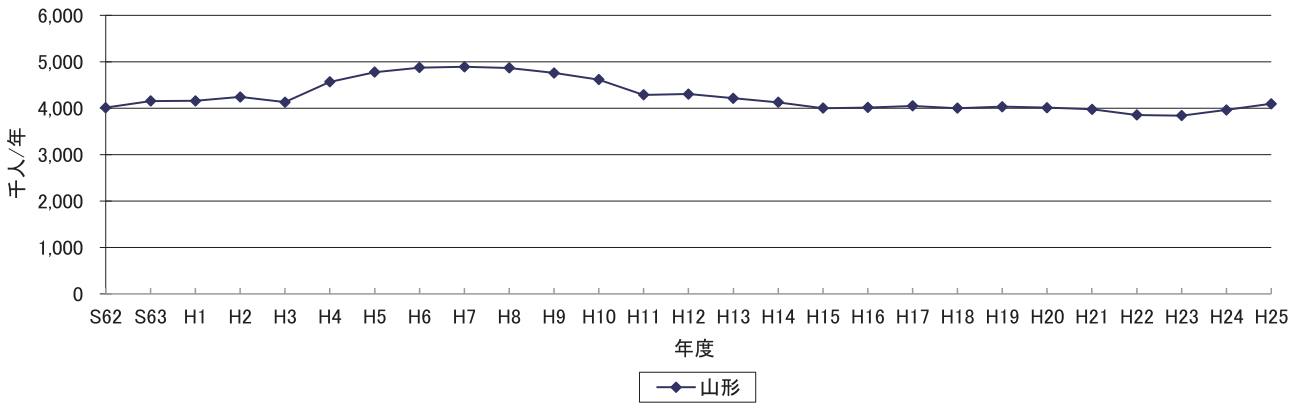




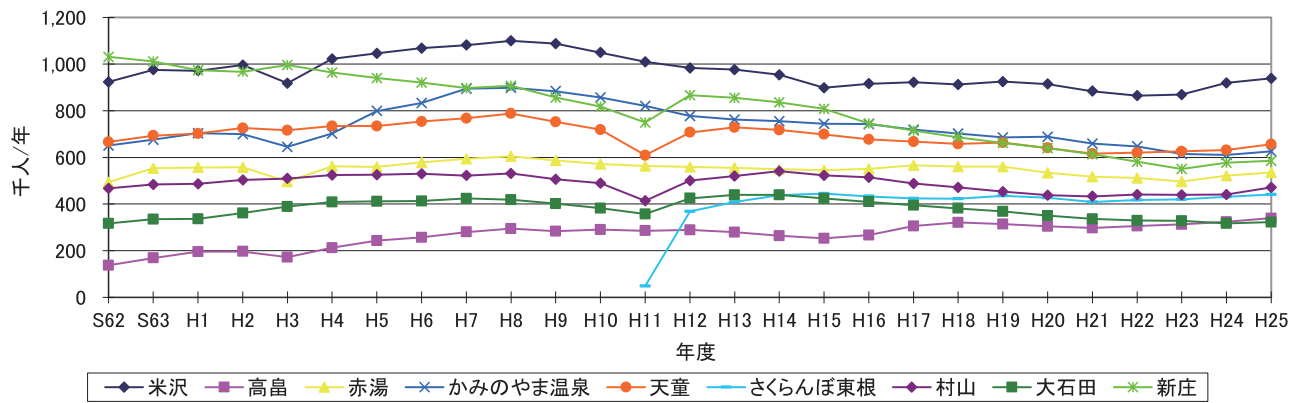


	S62	S63	H1	H2	H3	H4	H5	H6	H7	H8	H9	H10	H11	H12	H13	H14	H15	H16	H17	H18	H19	H20	H21	H22	H23	H24	H25	適用			
【現況本線】																															
無	82.1	77.1	74.6	74.9	66.2	62.2	64.2	60.5	56.0	47.3	42.9	42.8	46.1	40.5	41.2	38.3	39.4	34.3													
小岩川	35.0	31.5	33.8	36.2	35.4	28.3	27.0	26.1	25.7	24.3	20.5	18.4	17.6	17.2	16.1	14.2	15.3	17.5													
名つみ温泉	217.5	205.9	203.0	184.0	174.5	164.0	157.7	152.4	145.1	139.9	128.8	120.8	108.3	98.9	98.9	91.3	92.0	82.9													
五ノ川	無	146.7	44.0	41.7	36.3	30.0	34.4	35.5	37.1	31.7	27.7	22.3	20.5	20.1	19.3	19.3	17.9	15.7													
小浜瀬	無	37.6	33.7	31.2	27.4	27.4	27.9	28.2	27.1	26.7	23.0	22.9	24.9	23.0	22.6	19.0	20.1	15.3													
三瀬	無	94.9	79.7	71.0	70.8	69.3	61.5	61.5	63.1	60.1	55.2	46.6	43.9	43.1	42.0	37.2	38.0	33.2													
羽前水沢	無	53.3	47.1	43.1	39.8	38.8	35.7	31.1	32.4	28.0	26.5	24.1	27.1	24.1	25.6	21.2	21.2	15.0													
羽前大山	202.9	178.2	177.7	168.3	165.4	148.5	146.0	143.0	141.8	128.5	119.1	68.2	68.6	61.7	61.7	52.6	50.7	53.3													
藤岡	878.6	876.3	868.1	864.2	802.7	864.2	839.8	818.6	801.9	783.6	741.5	735.0	723.9	662.5	637.3	607.0	588.7	540.9													
藤島	228.9	209.7	223.2	202.7	202.7	190.6	191.8	195.2	193.5	191.9	195.9	195.6	186.7	182.1	176.7	171.2	150.7	146.0													
高登	無	56.3	54.2	49.0	47.9	45.6	52.2	50.9	48.7	48.1	48.6	50.6	51.6	46.0	44.9	39.1	38.0	31.4													
余目	321.9	323.2	331.6	322.4	330.0	308.7	293.4	288.8	294.4	312.1	305.5	291.9	286.9	282.5	280.3	275.6	260.2	247.8													
北条目	無	15.3	12.2	13.1	13.5	11.9	10.3	9.1	9.9	9.2	8.1	9.0	9.2	8.0	8.0	8.0	6.6	5.1													
砂越	137.6	117.6	123.5	118.9	119.2	131.5	127.2	125.9	126.7	125.4	125.6	124.0	117.1	122.3	120.8	115.0	107.7	96.7													
東海田	無	4.7	3.8	4.1	2.2	1.8	1.5	2.1	3.2	1.9	3.0	3.0	1.8	1.5	3.7	5.1	4.0	3.3													
本郷	1127.9	1141.0	1145.1	1156.5	1172.6	1103.1	1071.9	1061.3	1060.7	1060.1	987.6	902.7	842.5	807.7	784.4	748.8	700.8	678.2													
鹿島海	無	50.3	52.3	56.4	54.1	47.0	48.5	48.5	46.8	45.4	40.2	35.5	27.1	24.8	22.3	18.6	20.4	20.4													
波佐	198.5	199.1	135.7	202.7	199.1	188.8	180.3	164.9	157.0	148.0	143.1	127.7	121.9	114.6	112.8	113.2	108.1	110.2													
吹浦	79.3	77.4	75.3	76.4	111.3	98.3	94.6	87.2	80.1	80.5	77.4	67.5	65.5	59.1	58.4	56.2	54.0	52.9													
女群	無	4.007.8	3.803.1	3,746.0	3,760.6	3,835.1	3,615.2	3,528.6	3,407.9	3,347.7	3,169.2	2,956.1	2,833.3	2,685.5	2,615.3	2,487.4	2,367.2	2,232.0													

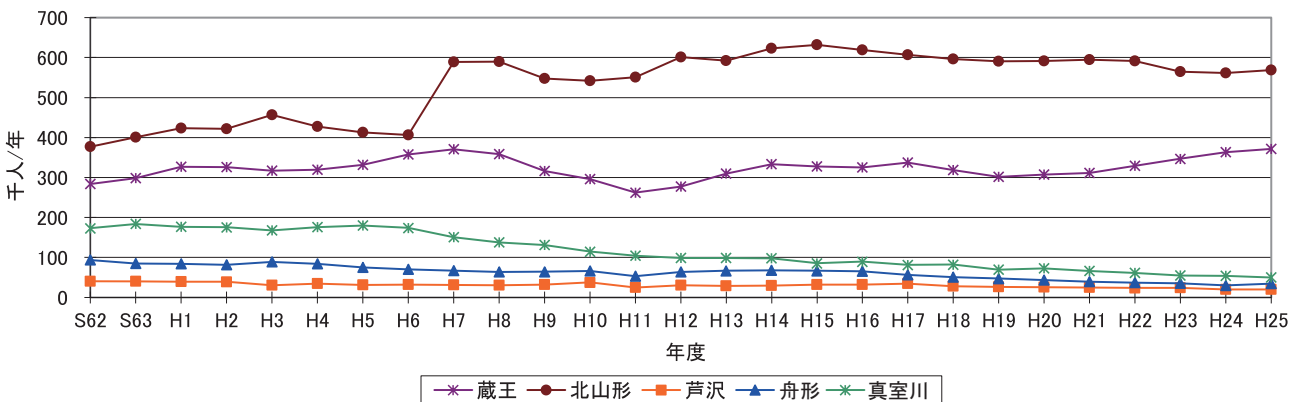
各駅乗車人数推移(奥羽本線:山形駅)



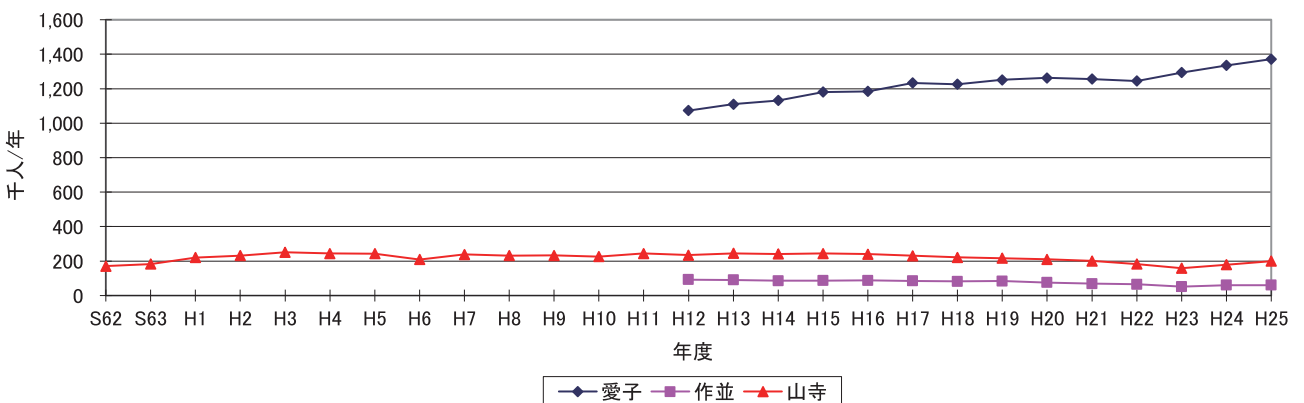
各駅乗車人数推移(奥羽本線:新幹線停車駅)



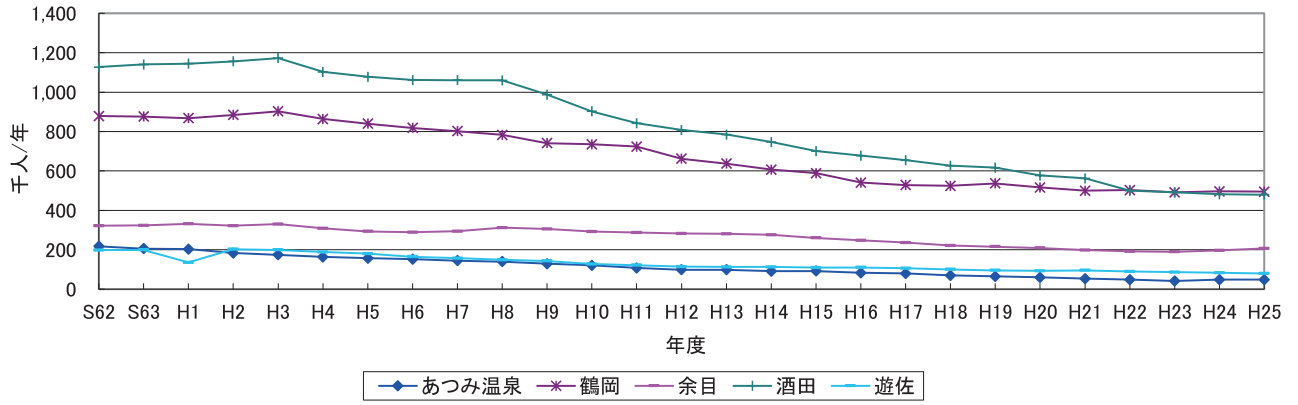
各駅乗車人数推移(奥羽本線:普通列車停車駅)



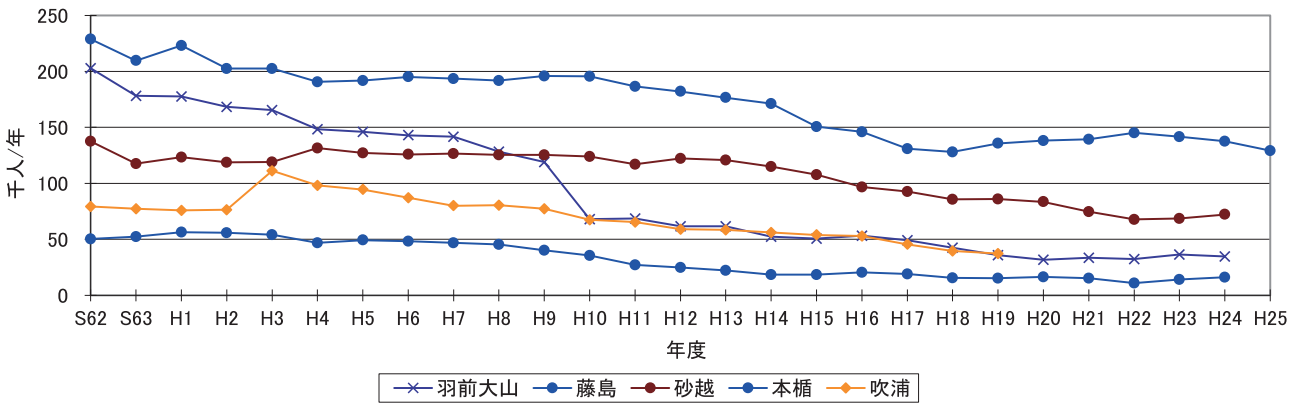
各駅乗車人数推移(仙山線)



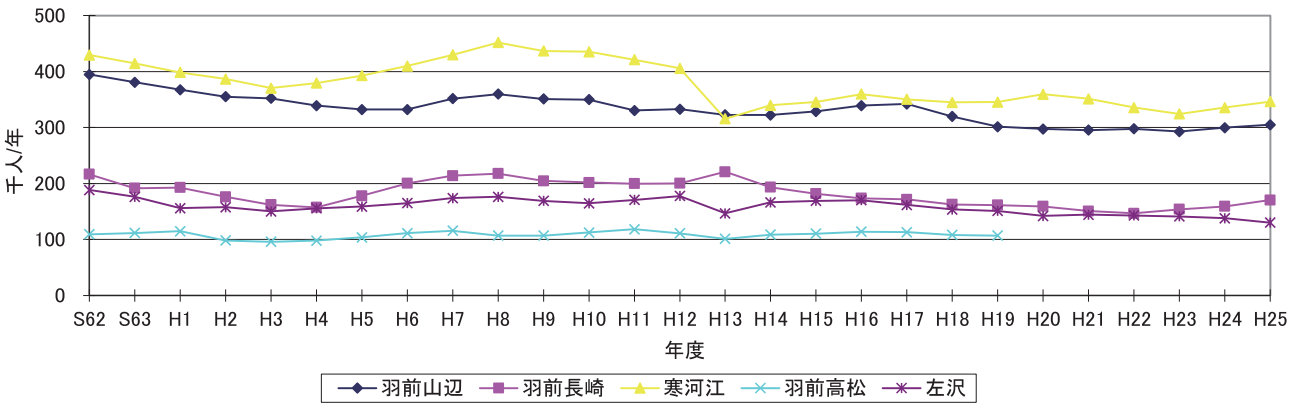
各駅乗車人数推移(羽越本線:特急停車駅)



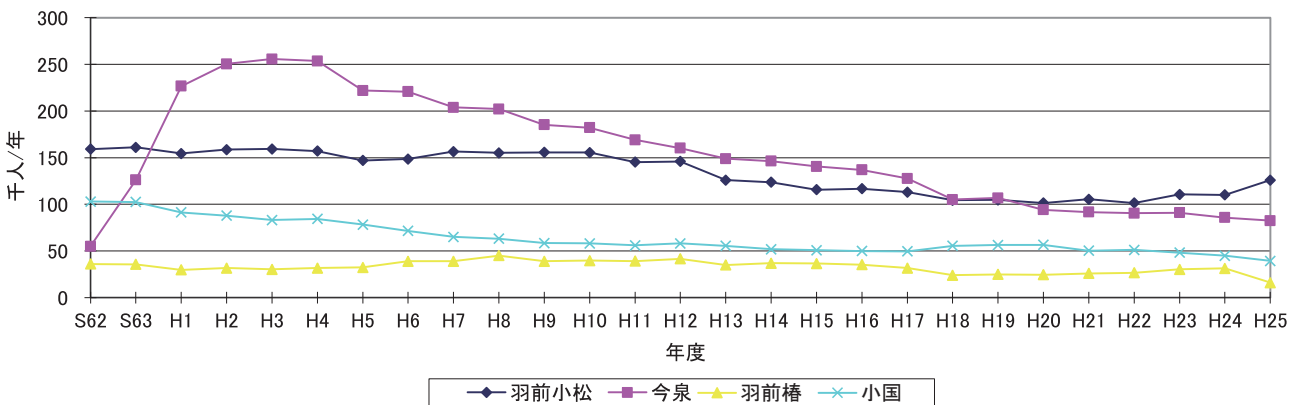
各駅乗車人数推移(羽越本線:その他)



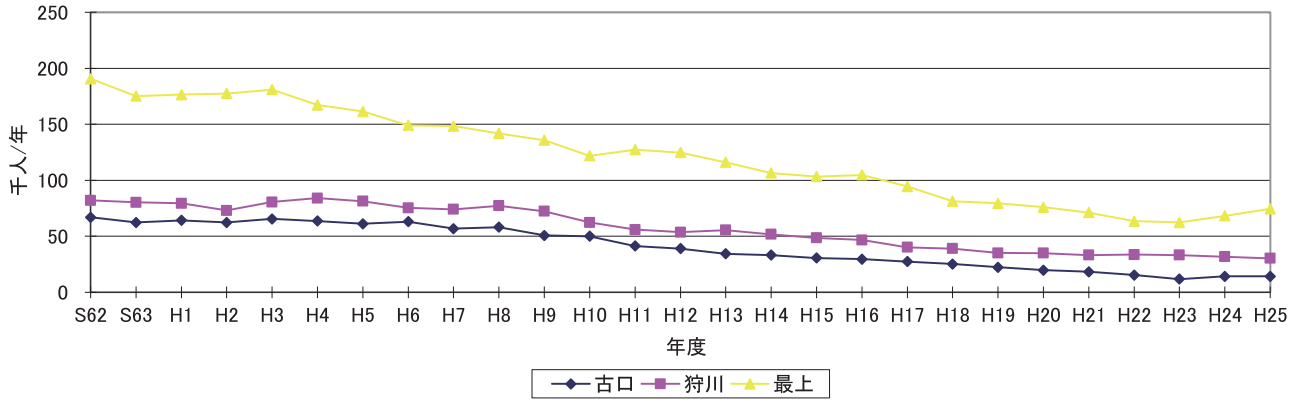
各駅乗車人数推移(左沢線)



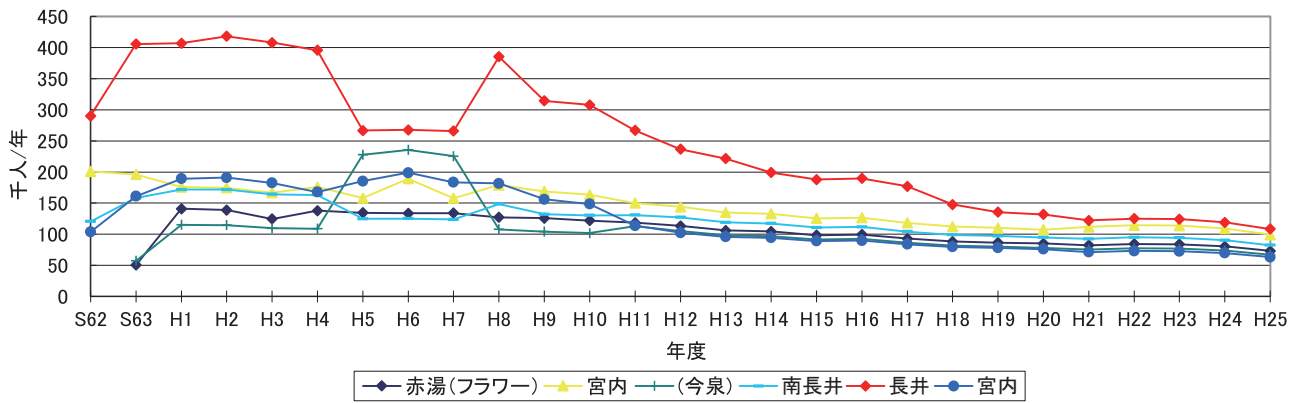
各駅乗車人数推移(米坂線)



各駅乗車人数推移(陸羽東西線)



各駅乗車人数推移(フラワー長井線①)



各駅乗車人数推移(フラワー長井線②)

