



National Survey Results
2020 General Election Likely Voters
Political Environment, Trends & Analysis

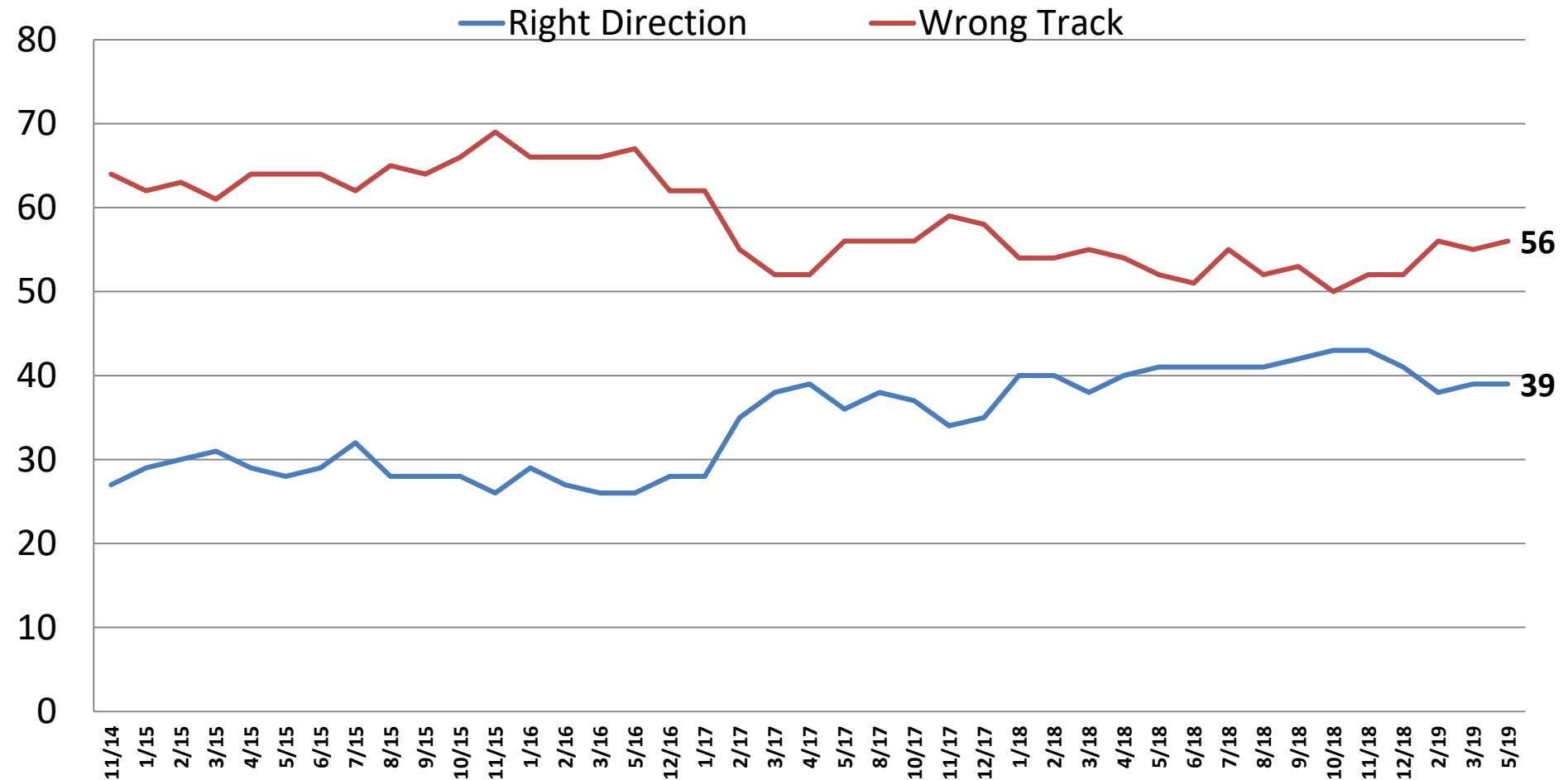
May 2019

On the web

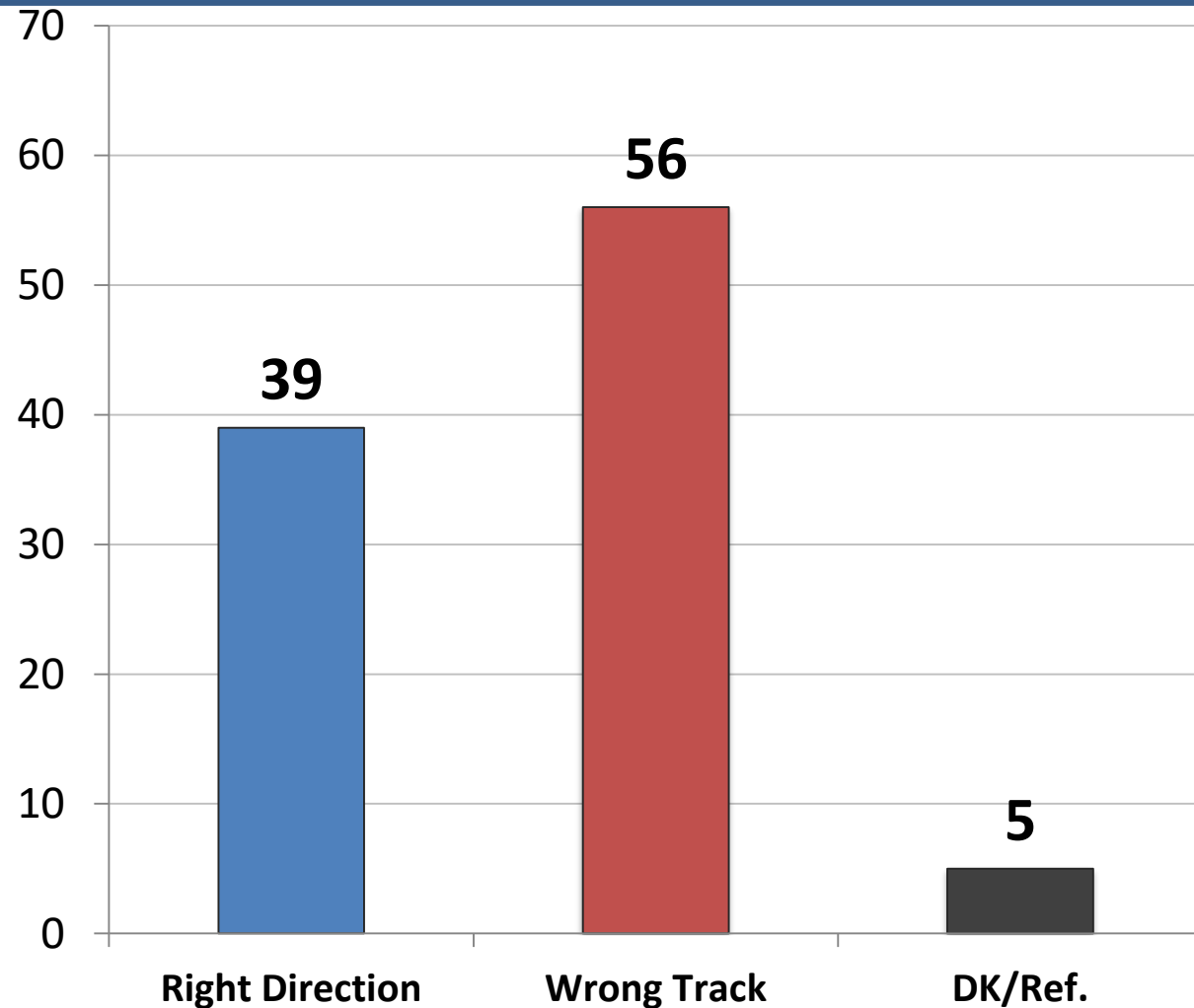
www.mclaughlinonline.com

Direction: United States

Time Series

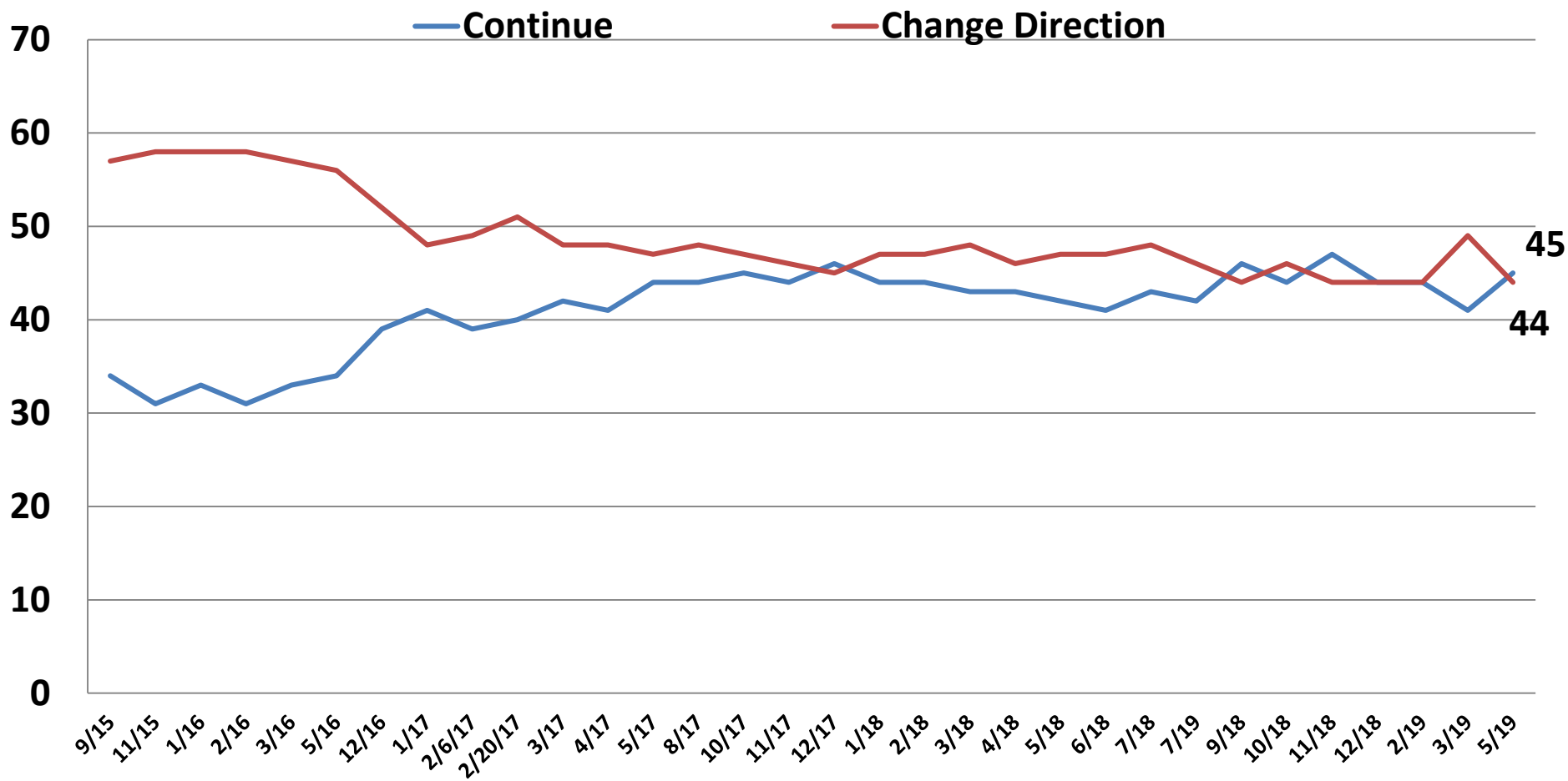


Direction: *United States*



	<u>R</u>	<u>W</u>
East	34	60
Midwest	41	54
South	43	53
West	35	61
Cont. Obama Pols.	16	79
Change Direction	67	31
Approve – Trump	75	22
Disapprove – Trump	6	88
Favorable – Trump	77	21
Unfavorable– Trump	7	87
Vote Pres. 2016 – Clinton	11	84
Vote Pres. 2016 – Trump	72	24
Vote Cong. 2020 – GOP	70	28
Vote Cong. 2020 – DEM	11	85
Vote Cong. 2020 – UND	26	59
Republican	70	28
Democrat	15	80
Independent	34	59
Liberal	22	76
Moderate	30	61
Conservative	63	34
No College Degree	38	56
College Graduate	40	56
White	45	52
African- American	16	76
Hispanic	33	63
Under 55	33	61
Over 55	48	49
Married	49	47
Single	27	67
Men	44	53
Women	35	59

Generally Speaking, would you like President Donald Trump and Congress to...?
 Continue the policies of President Obama
 OR
 Change direction and move away from the polices of President Obama
Time Series

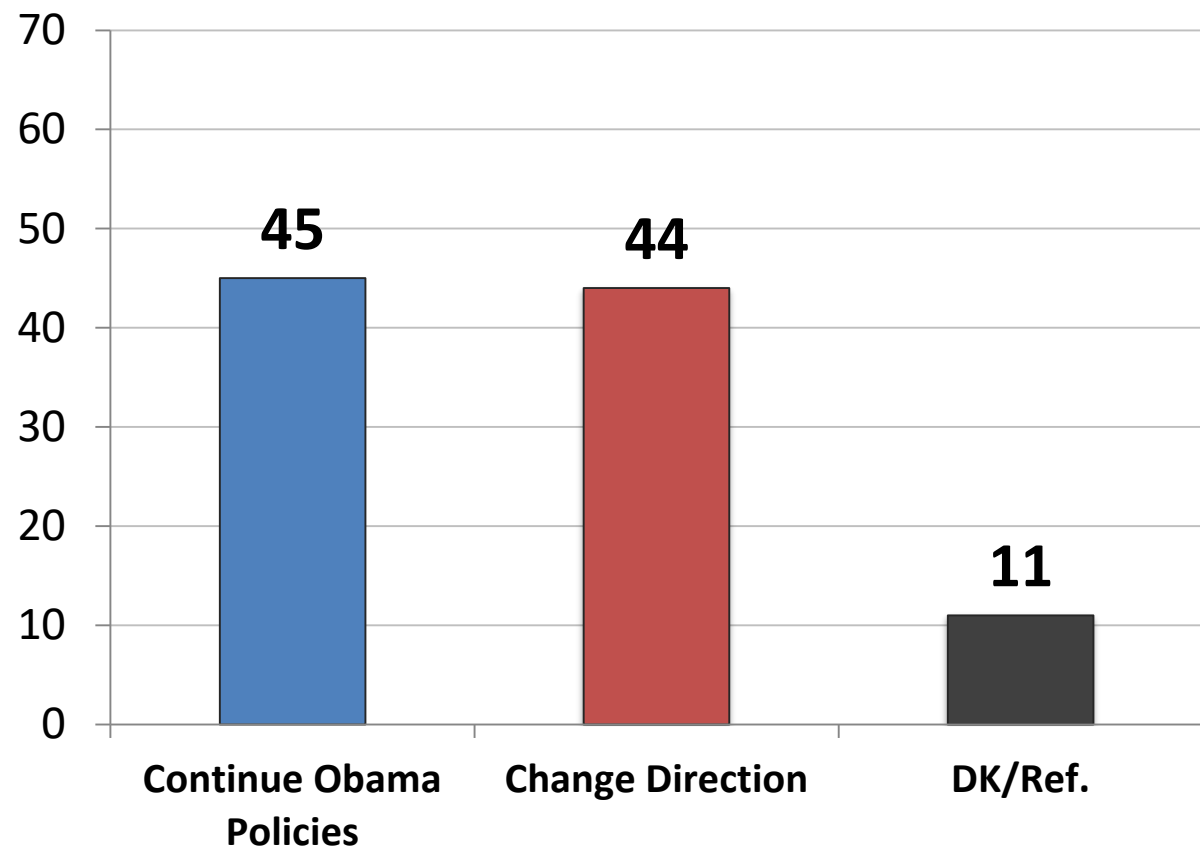


Generally Speaking, would you like President Donald Trump and Congress to...?

Continue the policies of President Obama

OR

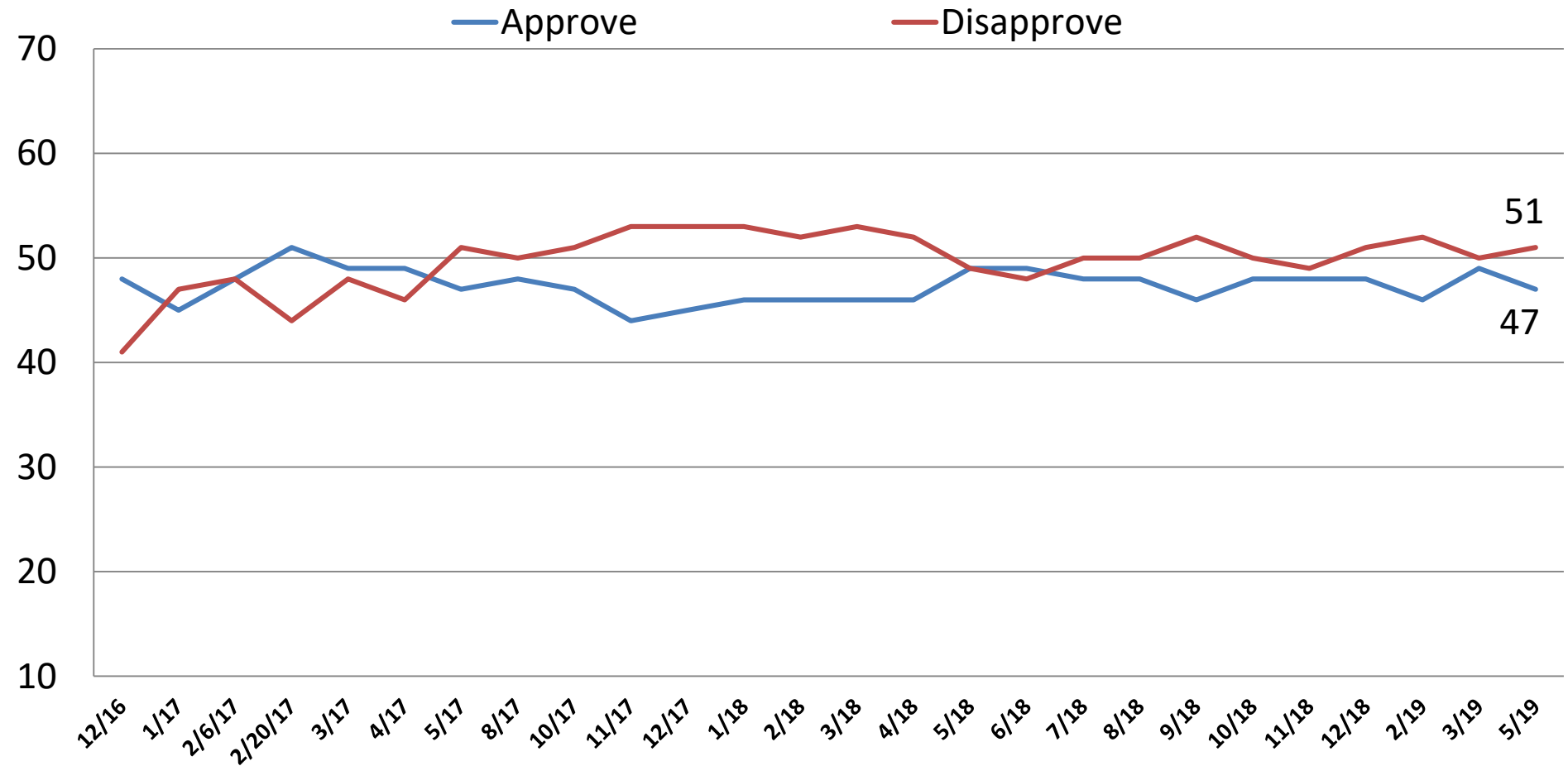
Change direction and move away from the policies of President Obama



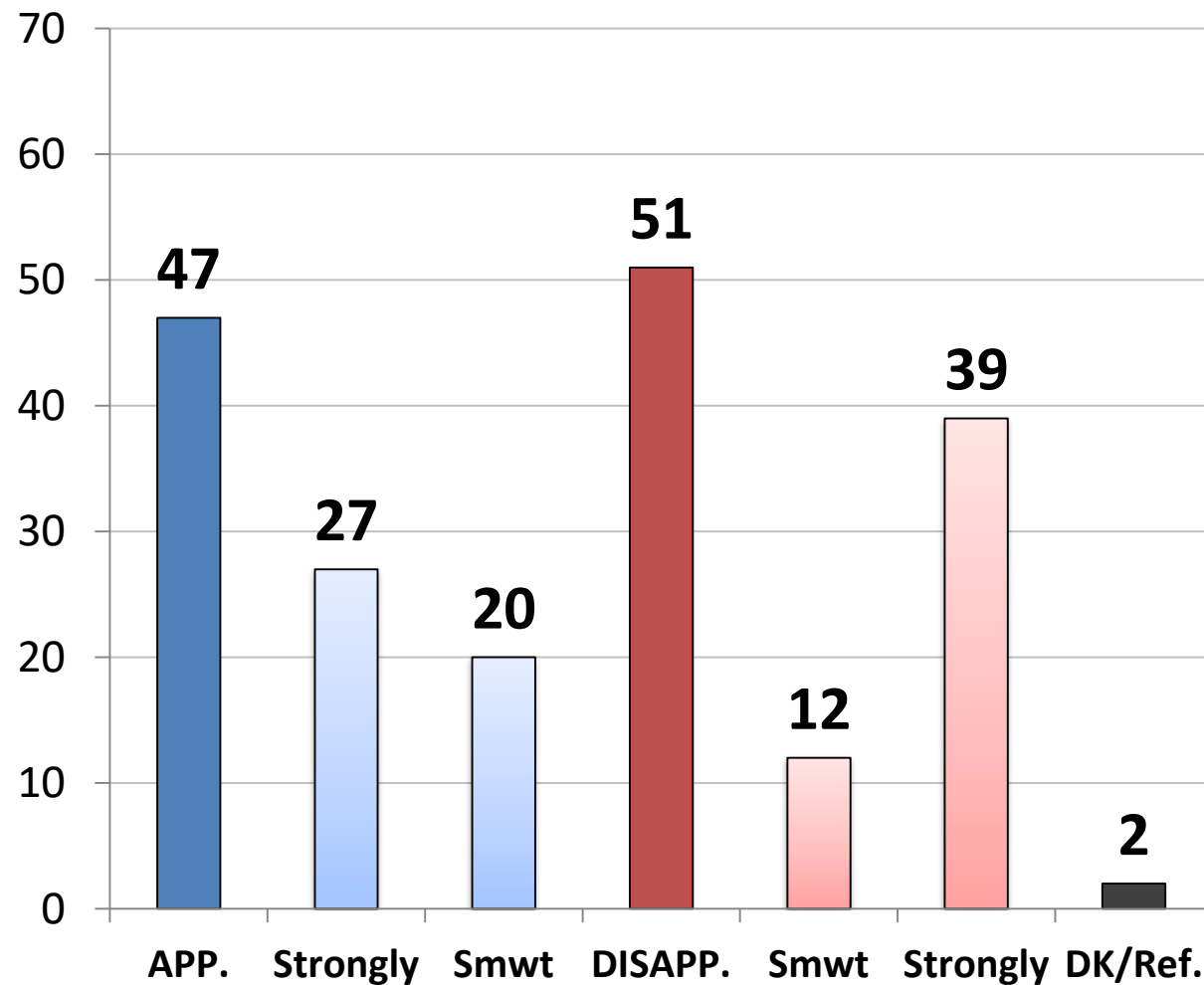
	<u>Cont.</u>	<u>Change</u>
East	49	37
Midwest	42	49
South	42	48
West	49	40
Cont. Obama Pols.	100	0
Change Direction	0	100
Approve – Trump	14	81
Disapprove – Trump	74	11
Favorable – Trump	14	81
Unfavorable– Trump	72	14
Vote Pres. 2016 – Clinton	82	9
Vote Pres. 2016 – Trump	12	83
Vote Cong. 2020 – GOP	14	80
Vote Cong. 2020 – DEM	80	9
Vote Cong. 2020 – UND	26	34
Republican	13	81
Democrat	80	11
Independent	37	44
Liberal	78	16
Moderate	46	36
Conservative	14	78
No College Degree	42	45
College Graduate	48	44
White	35	54
African- American	79	7
Hispanic	60	31
Under 55	55	33
Over 55	30	61
Married	37	56
Single	57	29
Men	43	48
Women	47	42

Job Rating: Donald Trump

Time Series



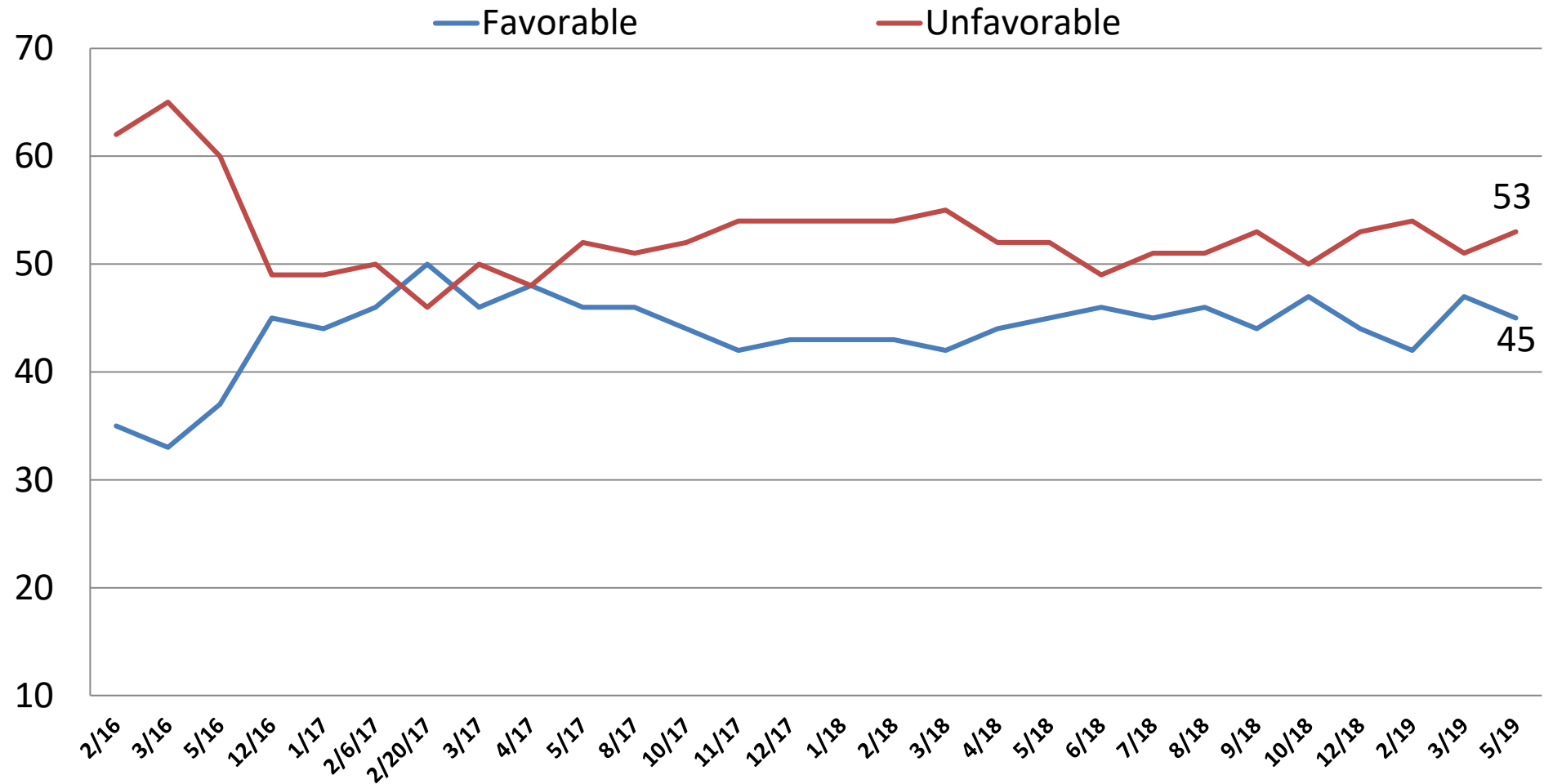
Job Rating: *Donald Trump*



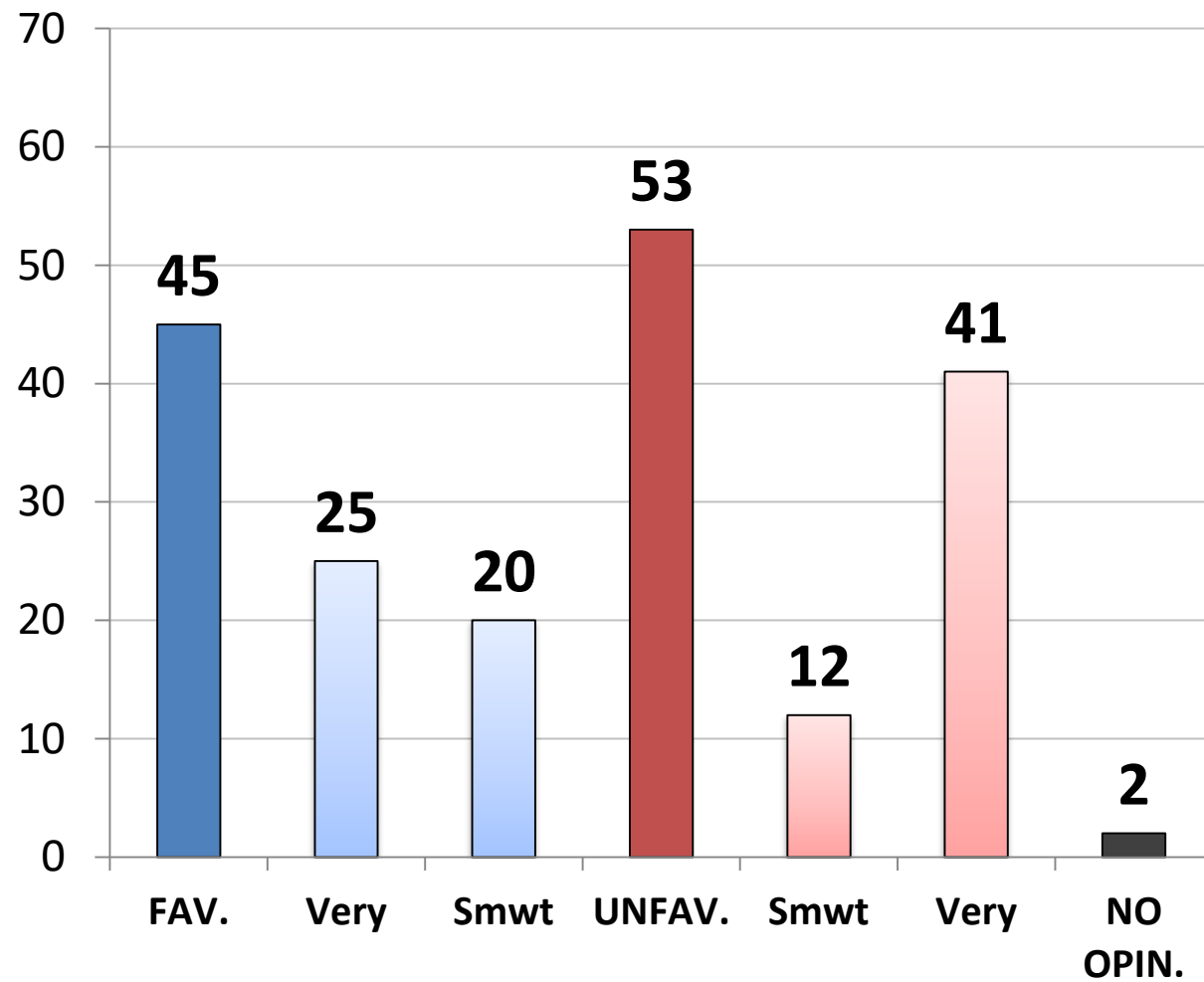
	<u>App.</u>	<u>Disapp.</u>
East	39	60
Midwest	51	48
South	51	47
West	45	53
Cont. Obama Pols.	15	84
Change Direction	86	13
Approve – Trump	100	0
Disapprove – Trump	0	100
Favorable – Trump	97	3
Unfavorable– Trump	6	93
Vote Pres. 2016 – Clinton	9	90
Vote Pres. 2016 – Trump	91	8
Vote Cong. 2020 – GOP	88	12
Vote Cong. 2020 – DEM	8	91
Vote Cong. 2020 – UND	33	55
Republican	86	13
Democrat	16	84
Independent	43	53
Liberal	25	75
Moderate	35	61
Conservative	78	20
No College Degree	47	51
College Graduate	48	50
White	56	43
African- American	12	85
Hispanic	36	63
Under 55	40	58
Over 55	59	40
Married	58	41
Single	33	65
Men	52	47
Women	43	54

Opinion: Donald Trump

Time Series

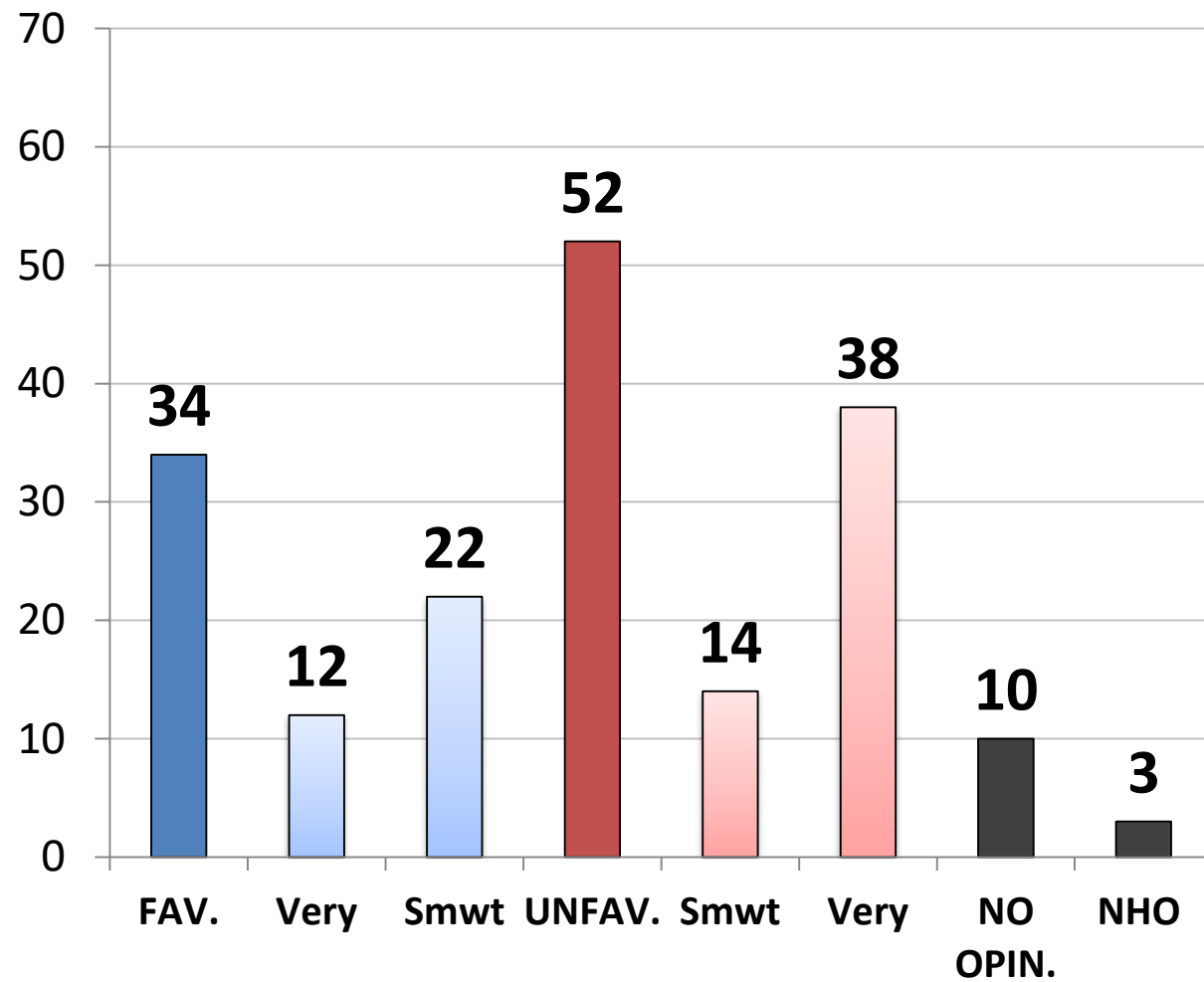


Opinion: *Donald Trump*



	<u>Fav.</u>	<u>Unfav</u>
East	38	60
Midwest	48	51
South	48	49
West	43	55
Cont. Obama Pols.	14	84
Change Direction	82	16
Approve – Trump	92	7
Disapprove – Trump	2	96
Favorable – Trump	100	0
Unfavorable– Trump	0	100
Vote Pres. 2016 – Clinton	8	90
Vote Pres. 2016 – Trump	89	9
Vote Cong. 2020 – GOP	84	15
Vote Cong. 2020 – DEM	8	90
Vote Cong. 2020 – UND	28	61
Republican	84	15
Democrat	15	83
Independent	39	58
Liberal	23	76
Moderate	33	64
Conservative	76	22
No College Degree	45	53
College Graduate	46	53
White	53	46
African- American	15	79
Hispanic	34	62
Under 55	37	61
Over 55	58	41
Married	55	43
Single	30	67
Men	50	49
Women	41	56

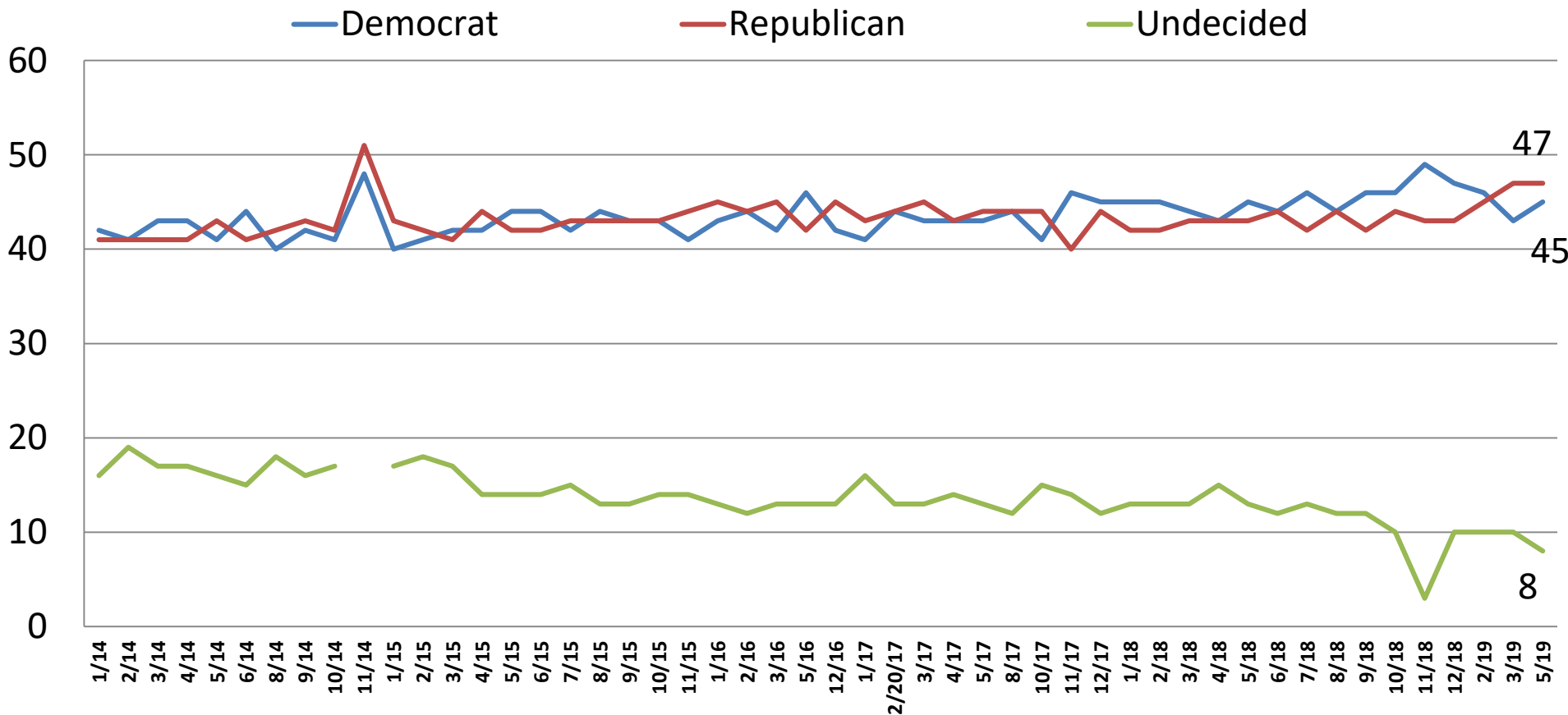
Opinion: *Nancy Pelosi*



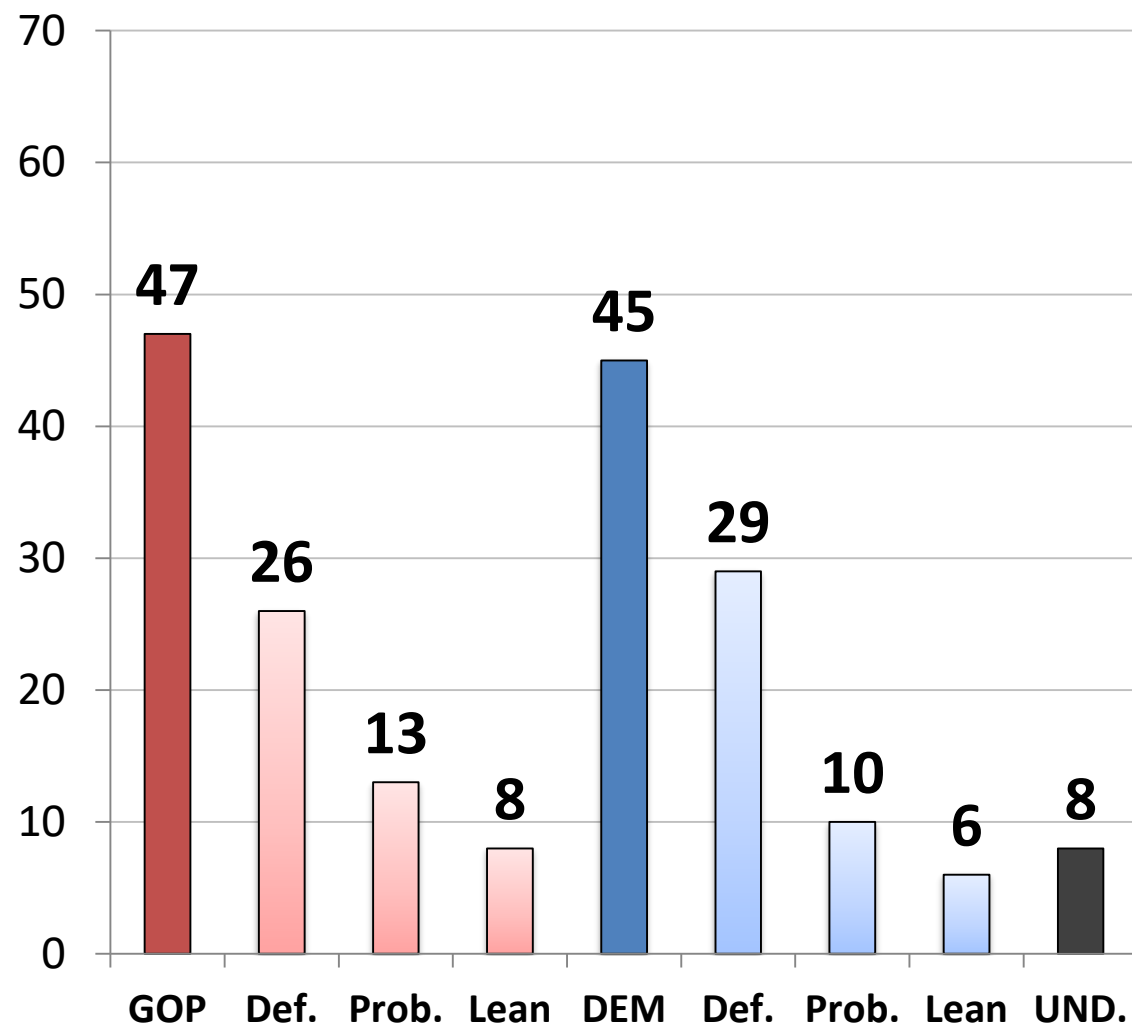
	<u>Fav.</u>	<u>Unfav.</u>
East	41	43
Midwest	30	57
South	35	53
West	31	54
Cont. Obama Pols.	60	25
Change Direction	9	85
Approve – Trump	18	76
Disapprove – Trump	50	32
Favorable – Trump	18	77
Unfavorable– Trump	48	33
Vote Pres. 2016 – Clinton	63	23
Vote Pres. 2016 – Trump	14	78
Vote Cong. 2020 – GOP	13	79
Vote Cong. 2020 – DEM	59	25
Vote Cong. 2020 – UND	14	51
Republican	12	80
Democrat	63	21
Independent	24	60
Liberal	64	23
Moderate	30	52
Conservative	10	79
No College Degree	30	55
College Graduate	39	50
White	29	61
African- American	61	17
Hispanic	37	40
Under 55	37	44
Over 55	30	65
Married	32	59
Single	35	43
Men	35	57
Women	33	49

Generic Ballot: U.S. Congress

Time Series



Generic Ballot: *U.S. Congress*



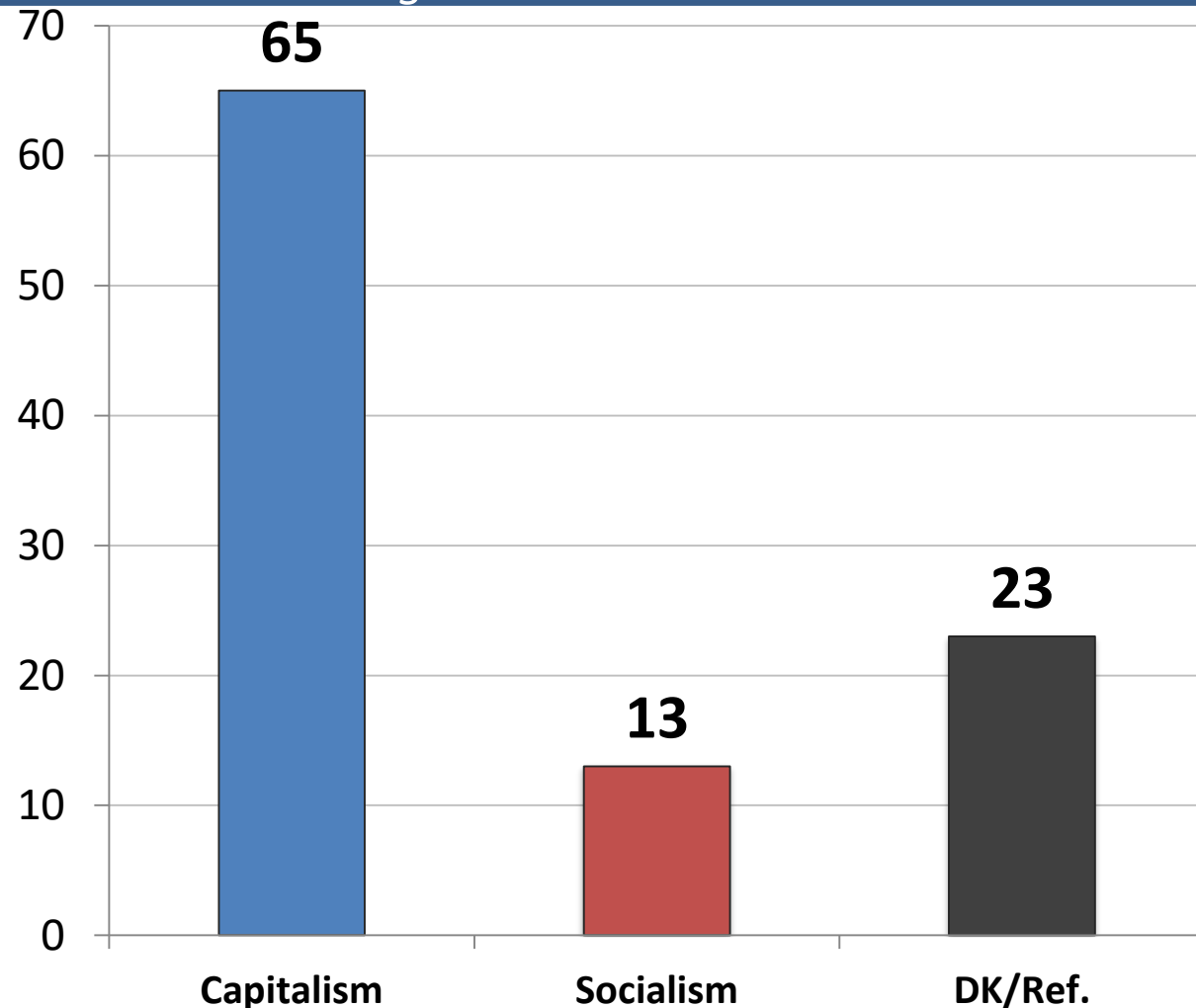
	<u>GOP</u>	<u>DEM.</u>	<u>UND.</u>
East	37	56	7
Midwest	53	36	11
South	49	44	8
West	43	49	8
Cont. Obama Pol.	15	81	5
Change Direction	84	9	7
Approve – Trump	86	8	6
Disapprove – Trump	11	80	9
Favorable – Trump	86	8	5
Unfavorable– Trump	13	77	10
Vote Pres. 2016 – Clinton	8	88	4
Vote Pres. 2016 – Trump	88	6	7
Vote Cong. 2020 – GOP	100	0	0
Vote Cong. 2020 – DEM	0	100	0
Vote Cong. 2020 – UND	0	0	100
Republican	95	3	2
Democrat	8	89	3
Independent	39	39	22
Liberal	18	81	1
Moderate	34	48	19
Conservative	83	12	6
No College Degree	47	43	10
College Graduate	46	48	7
White	56	35	9
African- American	11	83	6
Hispanic	34	61	5
Under 55	38	54	8
Over 55	60	32	8
Married	57	36	7
Single	33	58	9
Men	46	46	8
Women	47	45	9

All things being equal, do you prefer:

1. *Free Market Capitalism*

or.

2. *Big Government Socialism*



	<u>C</u>	<u>S</u>
East	59	13
Midwest	65	12
South	67	12
West	65	16
Cont. Obama Pols.	52	21
Change Direction	82	5
Approve – Trump	82	6
Disapprove – Trump	50	19
Favorable – Trump	83	5
Unfavorable– Trump	51	19
Vote Pres. 2016 – Clinton	49	20
Vote Pres. 2016 – Trump	82	3
Vote Cong. 2020 – GOP	81	6
Vote Cong. 2020 – DEM	50	21
Vote Cong. 2020 – UND	50	5
Republican	81	5
Democrat	50	21
Independent	64	11
Liberal	52	26
Moderate	57	10
Conservative	82	4
No College Degree	62	11
College Graduate	68	14
White	70	10
African- American	45	21
Hispanic	59	17
Under 55	59	18
Over 55	74	5
Married	71	12
Single	58	17
Men	72	14
Women	58	11

Now, from the following list, which issue is personally most important to you?

	<u>2/19</u>	<u>3/19</u>	<u>5/19</u>	<u>Rep</u>	<u>Dem</u>	<u>Ind</u>	<u>Lib</u>	<u>Mod</u>	<u>Cons</u>	<u>App. DJT</u>	<u>Disapp DJT</u>	<u>Men</u>	<u>Wo- Men</u>
ECONOMIC	36	31	32	27	34	36	34	37	26	33	33	34	31
Improving the Economy	11	10	12	13	12	13	13	13	11	14	11	13	12
Jobs/Unemployment	8	7	7	4	11	8	8	8	6	6	9	8	7
Wasteful Gov't Spending	8	6	6	5	6	8	8	9	3	7	6	6	7
Reduce Budget/Deficit	6	5	5	5	4	7	4	6	5	5	5	6	5
Hold Line/Taxes	3	3	1	2	1	0	2	1	1	1	1	1	1
SOCIAL	27	30	28	19	37	27	38	31	17	17	38	27	29
Protect Medicare	12	12	11	10	12	10	11	13	9	8	13	11	11
Reform Healthcare	10	12	10	7	14	9	16	10	6	6	15	9	11
Improving Education	5	6	7	2	10	8	10	9	2	3	10	7	7
SECURITY	20	20	22	40	12	16	12	12	40	38	8	22	23
Fix Immigration	9	9	11	19	4	10	3	6	21	20	2	10	11
Nat'l Sec./Terror	8	9	9	16	5	6	4	4	17	15	4	9	9
Defeat/Destroy ISIS	2	2	3	4	4	1	5	2	2	4	2	3	3
HONESTY/INTEGRITY/D.C.	15	17	15	13	15	17	14	17	24	12	18	16	15
D.K./REFUSED	3	2	2	1	2	4	2	3	2	1	3	2	2

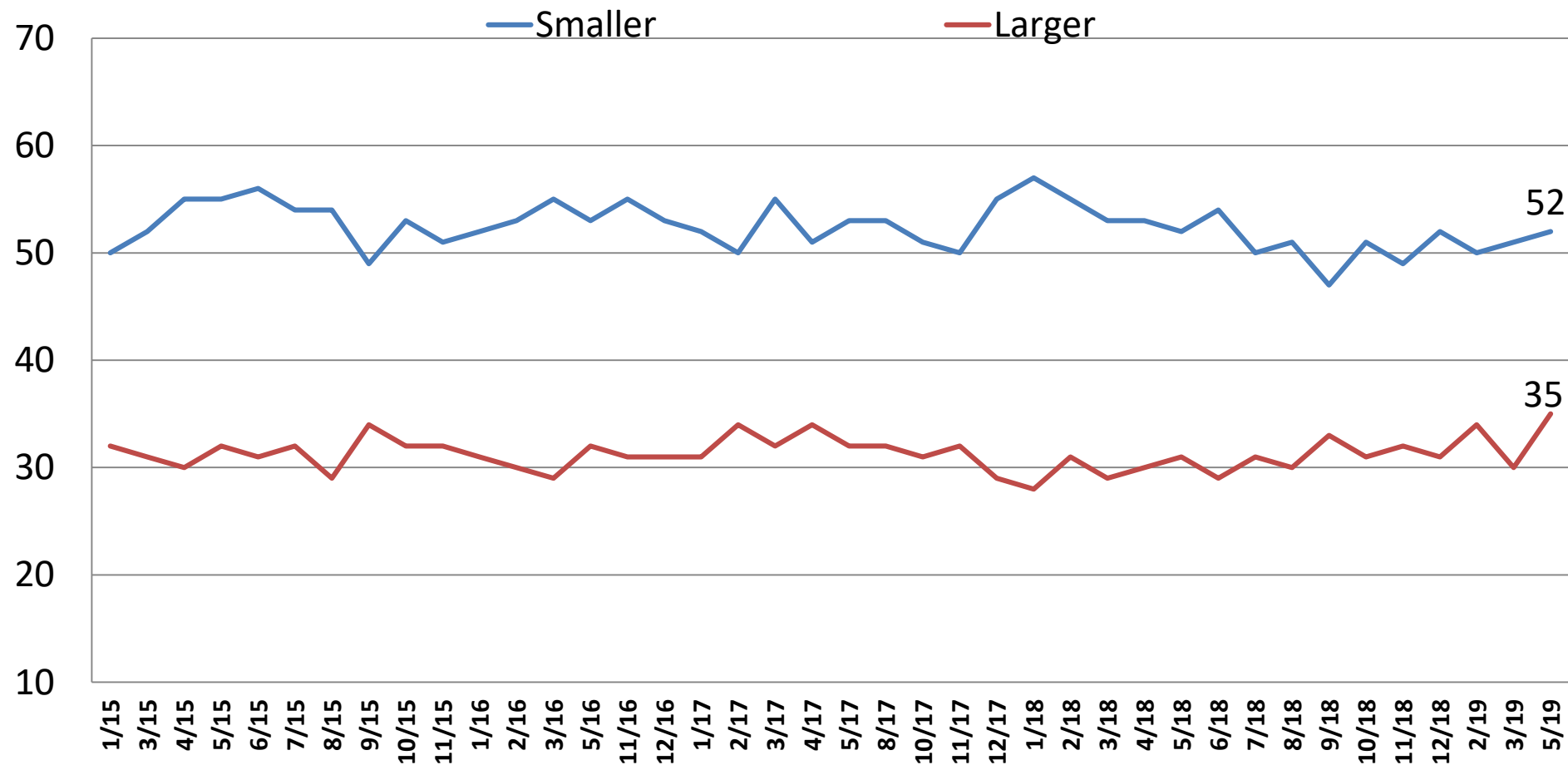
Current Opinion of the U.S. Economy

Time Series

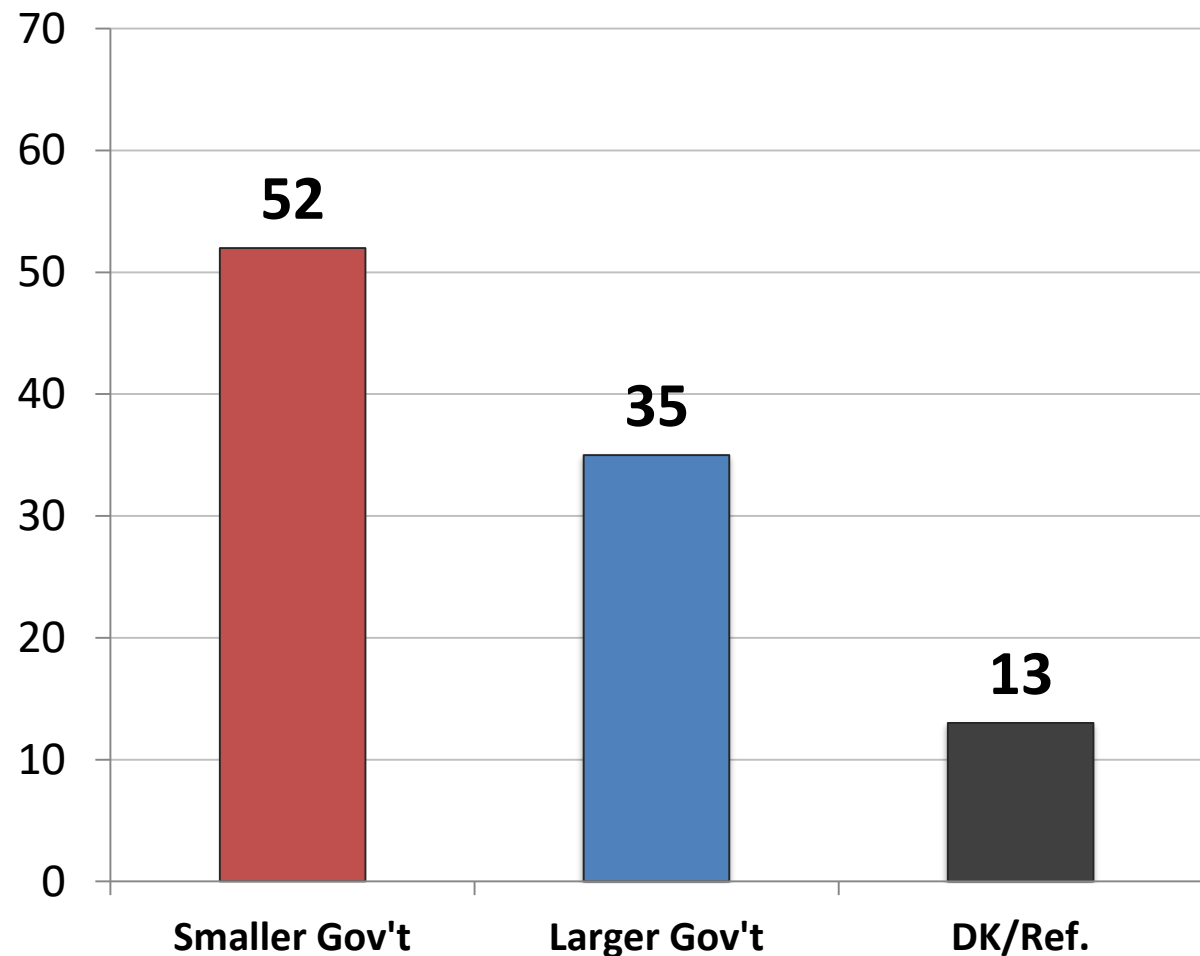
	<u>2/19</u>	<u>3/19</u>	<u>5/19</u>	<u>Rep</u>	<u>Dem</u>	<u>Ind</u>	<u>Lib</u>	<u>Mod</u>	<u>Cons</u>	<u>App. DJT</u>	<u>Disapp. DJT</u>	<u>Men</u>	<u>Women</u>
NOT RECESSION	68	70	67	81	57	65	60	62	78	81	57	71	64
Getting Better	39	40	42	69	22	36	26	29	67	69	18	48	36
Getting Worse	29	30	26	12	35	29	35	33	11	12	39	23	28
RECESSION	22	21	23	15	33	20	30	25	15	15	30	21	24
Getting Better	9	11	12	10	14	11	12	13	10	12	11	11	12
Getting Worse	13	11	11	4	19	10	18	12	5	3	19	10	12
D.K./REFUSED	10	9	10	4	11	15	10	13	7	4	14	8	12
GETTING BETTER	48	51	53	79	35	46	38	42	77	81	29	60	48
GETTING WORSE	42	40	37	17	54	38	52	45	16	15	57	33	41
D.K./REFUSED	10	9	10	4	11	15	10	13	7	4	14	8	12
<i>Net Diff.</i>	5	11	16	63	-19	8	-14	-3	61	65	-28	27	7

Would you say you most favor a smaller government with fewer services or a larger government with many services?

Time Series

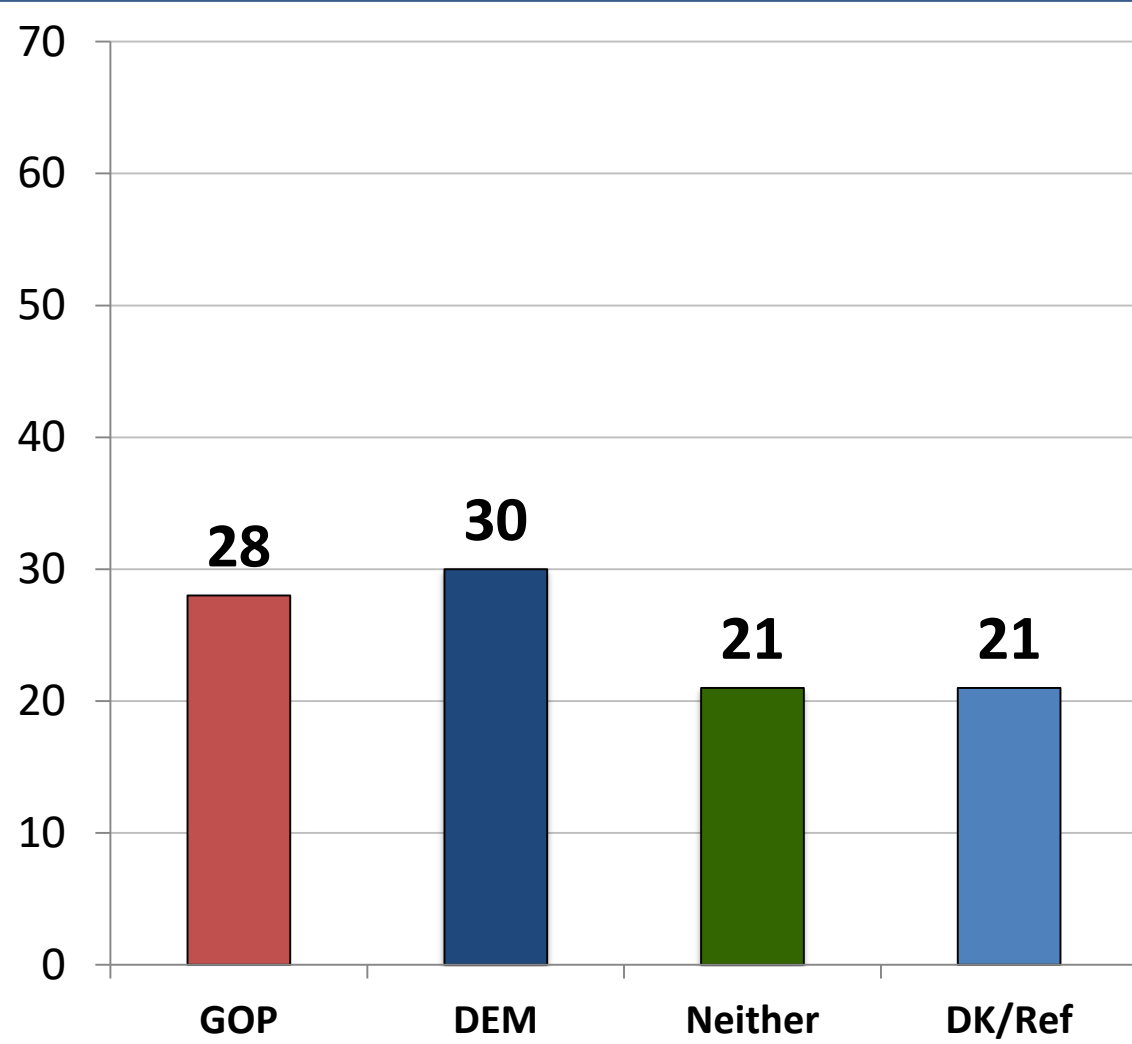


Would you say you most favor a smaller government with fewer services or a larger government with many services?



	<u>Smaller</u>	<u>Larger</u>
East	44	43
Midwest	60	31
South	55	33
West	47	37
Cont. Obama Pols.	35	51
Change Direction	71	20
Approve – Trump	72	20
Disapprove – Trump	34	49
Favorable – Trump	72	20
Unfavorable – Trump	36	48
Vote Pres. 2016 – Clinton	31	54
Vote Pres. 2016 – Trump	73	18
Vote Cong. 2018 – GOP	71	20
Vote Cong. 2018 – DEM	34	52
Vote Cong. 2018 – UND	46	30
Republican	72	19
Democrat	33	53
Independent	54	31
Liberal	35	52
Moderate	44	39
Conservative	75	16
No College Degree	51	34
College Graduate	54	36
White	58	29
African- American	29	54
Hispanic	45	46
Under 55	46	41
Over 55	62	26
Married	58	31
Single	44	41
Men	59	34
Women	47	36

Independents – Which party's primary are you more likely to vote?



	<u>GOP</u>	<u>DEM</u>	<u>NTR</u>
East	26	33	27
Midwest	33	24	18
South	36	28	15
West	13	39	28
Cont. Obama Pols.	8	56	18
Change Direction	50	12	22
Approve – Trump	53	4	19
Disapprove – Trump	10	51	23
Favorable – Trump	54	4	18
Unfavorable– Trump	11	49	23
Vote Pres. 2016 – Clinton	9	58	25
Vote Pres. 2016 – Trump	54	4	20
Vote Cong. 2018 – GOP	62	6	17
Vote Cong. 2018 – DEM	5	66	21
Vote Cong. 2018 – UND	9	11	29
Republican	0	0	0
Democrat	0	0	0
Independent	28	30	21
Liberal	7	70	16
Moderate	24	27	22
Conservative	51	8	22
No College Degree	31	29	19
College Graduate	25	32	24
White	31	28	22
African- American	22	44	12
Hispanic	22	43	8
Under 55	24	36	19
Over 55	33	22	24
Married	35	23	22
Single	22	38	19
Men	29	25	23
Women	27	37	18

2020 Republican Primary for President

	<u>11/18</u>	<u>12/18</u>	<u>2/19</u>	<u>3/19</u>	<u>5/19</u>	<u>E</u>	<u>MW</u>	<u>S</u>	<u>W</u>	<u>Rep</u>	<u>Dem</u>	<u>Ind</u>	<u>Lib</u>	<u>Mod</u>	<u>Cons</u>	<u>App. DJT</u>	<u>Disapp DJT</u>	<u>Men</u>	<u>Wo- men</u>	<u>White</u>	<u>AA</u>	<u>HISP</u>
Donald Trump	79	72	72	80	77	78	74	78	79	80	0	68	73	62	83	89	9	83	73	79	53	66
John Kasich	4	5	6	5	5	3	5	5	7	5	0	7	8	5	5	3	16	5	5	5	9	7
Bill Weld	-	-	-	1	3	8	3	0	2	2	0	6	2	7	1	1	13	3	2	2	8	8
Larry Hogan	-	-	-	-	1	2	1	3	0	1	0	2	0	5	0	1	4	1	2	1	7	3
Mitt Romney	5	9	10	-	-	-	-	-	-	-	-	-	-	-	-	-	-	-	-	-	-	-
Jeff Flake	1	2	-	-	-	-	-	-	-	-	-	-	-	-	-	-	-	-	-	-	-	-
Undecided	11	12	11	14	14	9	17	14	13	13	0	17	18	21	11	6	58	9	18	13	24	17

2020 Democratic Primary for President

	<u>11/18</u>	<u>12/18</u>	<u>2/19</u>	<u>3/19</u>	<u>5/19</u>	<u>E</u>	<u>MW</u>	<u>S</u>	<u>W</u>	<u>Rep</u>	<u>Dem</u>	<u>Ind</u>	<u>Lib</u>	<u>Mod</u>	<u>Cons</u>	<u>App. DJT</u>	<u>Disap. p. DJT</u>	<u>Men</u>	<u>Women</u>	<u>White</u>	<u>AA</u>	<u>HISP</u>
Joe Biden	19	17	25	28	30	33	28	37	19	0	32	24	28	34	31	22	32	33	28	30	40	19
Bernie Sanders	16	18	16	17	19	21	16	19	19	0	19	20	19	18	21	12	20	21	17	16	17	25
Elizabeth Warren	4	4	5	5	7	8	5	6	8	0	7	7	9	3	7	11	6	7	7	10	3	5
Kamala Harris	5	3	8	8	7	2	8	5	11	0	7	3	8	6	0	3	7	5	7	5	9	7
Cory Booker	3	2	3	3	5	5	5	5	5	0	6	3	4	5	11	5	5	6	4	3	10	3
Beto O'Rourke	n/a	11	6	8	5	4	8	5	3	0	5	5	5	5	2	3	5	2	7	5	3	6
Pete Buttigieg	-	-	.1	3	4	2	7	4	3	0	4	6	6	2	0	0	5	5	3	7	1	1
Andrew Yang	-	-	.1	0	2	3	3	1	3	0	1	7	2	2	2	4	2	4	1	3	1	3
Amy Klobuchar	N/A	1	1	1	2	1	3	1	3	0	2	1	2	2	0	1	2	2	2	2	0	3
Kirsten Gillibrand	1	1	1	1	1	3	2	0	1	0	2	0	1	2	3	2	1	2	1	3	0	0
Julian Castro	-	-	1	0	1	3	0	1	0	0	1	0	1	1	0	4	0	1	1	1	0	0
Michael Bennet	-	-	-	-	1	2	0	1	1	0	1	1	1	1	0	3	0	1	0	0	1	2

2020 Democratic Primary for President Cont.

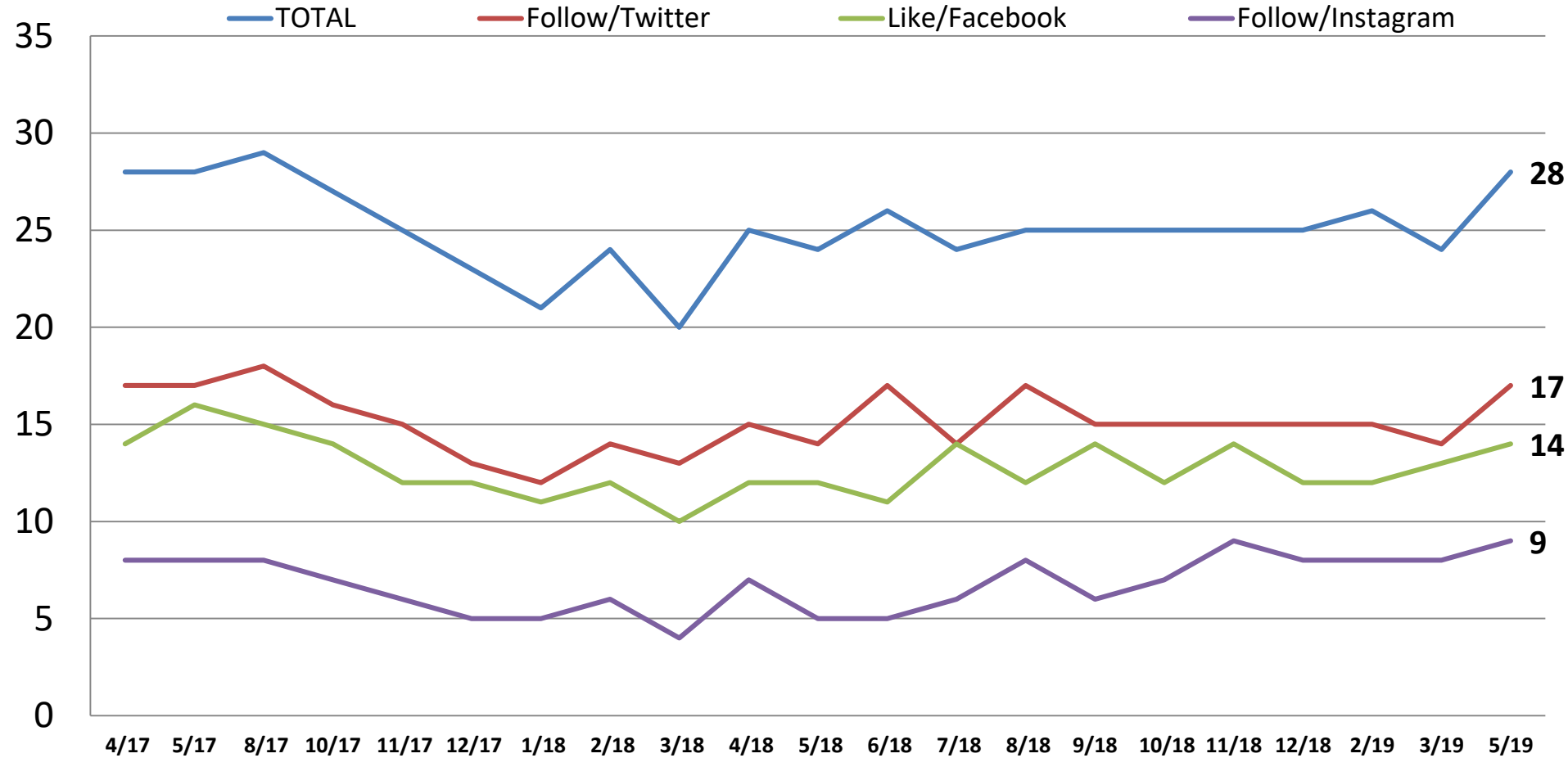
	<u>11/18</u>	<u>12/18</u>	<u>2/19</u>	<u>3/19</u>	<u>5/19</u>	<u>E</u>	<u>MW</u>	<u>S</u>	<u>W</u>	<u>Rep</u>	<u>Dem</u>	<u>Ind</u>	<u>Lib</u>	<u>Mod</u>	<u>Cons</u>	<u>App. DJT</u>	<u>Disapp. DJT</u>	<u>Men</u>	<u>Wo- men</u>	<u>White</u>	<u>AA</u>	<u>HISP</u>
Mike Gravel	-	-	-	-	1	0	1	1	1	0	1	1	1	1	0	2	1	1	0	1	1	0
Tim Ryan	-	-	-	-	1	0	1	1	1	0	1	0	0	1	2	3	0	1	0	0	0	3
Seth Moulton	-	-	-	-	1	1	0	1	0	0	1	0	1	0	0	4	0	1	0	1	0	0
Jay Inslee	-	-	.2	0.2	.4	0	1	1	0	0	0	1	1	0	0	2	0	1	0	0	0	1
Tulsi Gabbard	-	-	.4	-	.4	0	0	1	0	0	1	0	1	0	0	2	0	0	1	1	1	0
John Hickenlooper	1	1	1	-	.4	0	0	0	2	0	0	2	1	0	0	0	1	0	0	1	0	0
John Delaney	-	-	.2	1	.4	1	0	0	0	0	0	1	1	0	0	2	0	1	0	0	1	0
Wayne Messam	-	-	-	-	.3	1	0	0	1	0	0	0	1	0	0	3	0	1	0	0	1	1
Eric Swalwell	-	-	-	-	.2	0	0	0	1	0	0	0	0	1	0	0	0	0	0	0	0	0
Bill De Blasio	0.3	0	.2	0.3	.2	0	0	1	0	0	0	0	0	0	0	2	0	0	0	0	0	1
Steven Bullock	-	-	-	-	.2	0	1	0	0	0	0	0	0	0	0	2	0	1	0	0	0	0
Marianne Williamson	-	-	-	-	-	-	-	-	-	-	-	-	-	-	-	-	-	-	-	-	-	-

2020 Democratic Primary for President Cont.

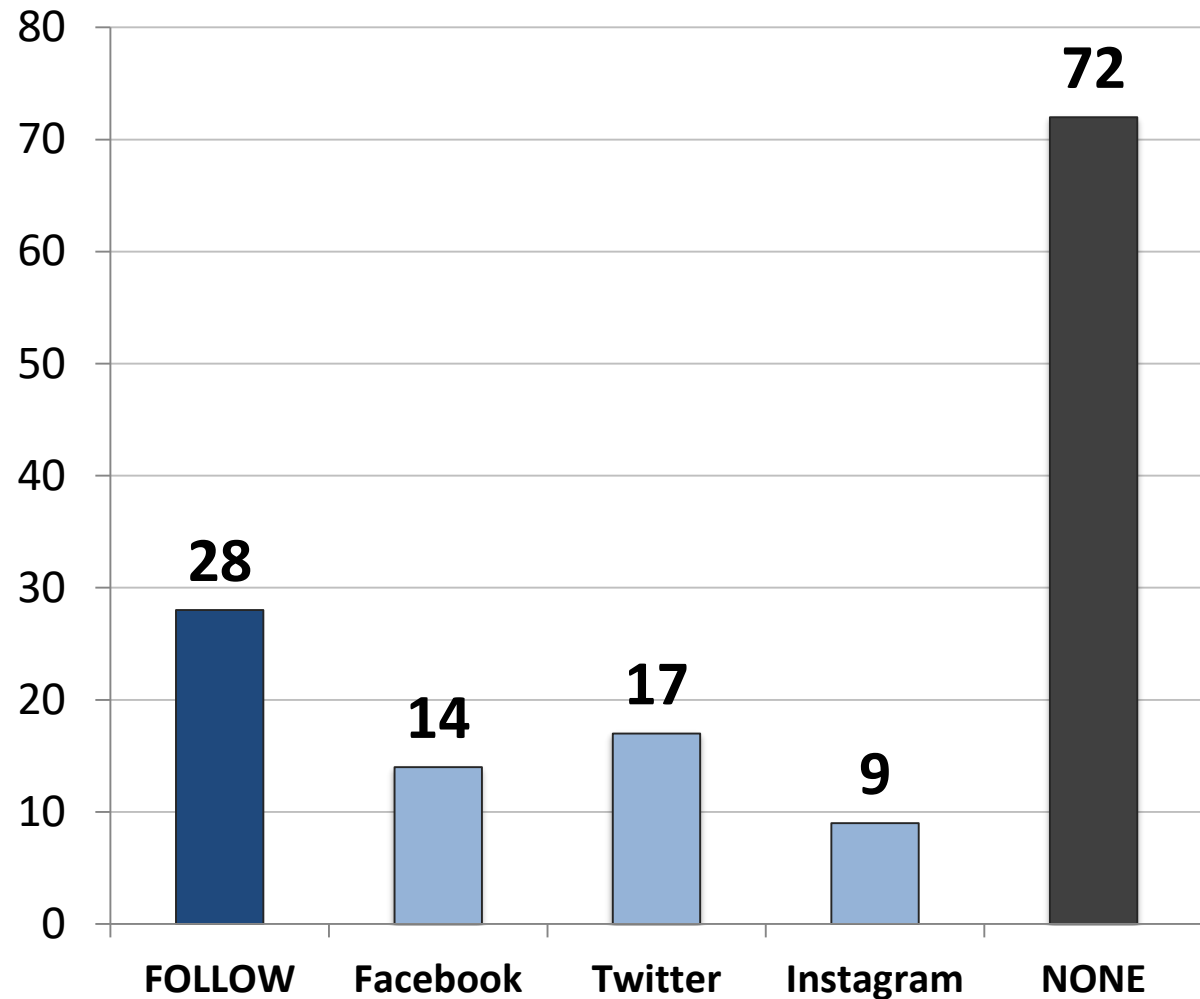
	<u>11/18</u>	<u>12/18</u>	<u>2/19</u>	<u>3/19</u>	<u>5/19</u>	<u>E</u>	<u>MW</u>	<u>S</u>	<u>W</u>	<u>Rep</u>	<u>Dem</u>	<u>Ind</u>	<u>Lib</u>	<u>Mod</u>	<u>Cons</u>	<u>App. DJT</u>	<u>Disapp. DJT</u>	<u>Men</u>	<u>Women</u>	<u>White</u>	<u>AA</u>	<u>HISP</u>
Hillary Clinton	8	9	7	8	N/A	-	-	-	-	-	-	-	-	-	-	-	-	-	-	-	-	-
Oprah Winfrey	4	3	5	-	N/A	-	-	-	-	-	-	-	-	-	-	-	-	-	-	-	-	-
Michael Bloomberg	2	2	2	-	N/A	-	-	-	-	-	-	-	-	-	-	-	-	-	-	-	-	-
Sherrod Brown	-	-	1	-	N/A	-	-	-	-	-	-	-	-	-	-	-	-	-	-	-	-	-
Andrew Cuomo	1	--	1	0	N/A	-	-	-	-	-	-	-	-	-	-	-	-	-	-	-	-	-
Deval Patrick	1	1	1	-	N/A	-	-	-	-	-	-	-	-	-	-	-	-	-	-	-	-	-
Mark Zuckerberg	1	0	1	-	N/A	-	-	-	-	-	-	-	-	-	-	-	-	-	-	-	-	-
Eric Holder	1	1	.2	-	N/A	-	-	-	-	-	-	-	-	-	-	-	-	-	-	-	-	-
Terry McAuliffe	-	-	.1	.3	N/A	-	-	-	-	-	-	-	-	-	-	-	-	-	-	-	-	-
Tim Kaine	1	0	0	-	N/A	-	-	-	-	-	-	-	-	-	-	-	-	-	-	-	-	-
Howard Schultz	0.1	0	-	-	N/A	-	-	-	-	-	-	-	-	-	-	-	-	-	-	-	-	-
Michael Avenatti	0.4	-	-	-	N/A	-	-	-	-	-	-	-	-	-	-	-	-	-	-	-	-	-
Michelle Obama	17	16	-	-	N/A	-	-	-	-	-	-	-	-	-	-	-	-	-	-	-	-	-
Undecided	16	11	15	16	13	11	10	12	18	0	11	19	8	19	22	10	13	6	19	13	12	19

Do you follow Donald Trump on Twitter, Instagram and/or have you like his page on Facebook, meaning his posts show up on your newsfeed?

- Time Series -



Do you follow Donald Trump on Twitter, Instagram and/or have you like his page on Facebook, meaning his posts show up on your newsfeed?



	Follow	None
East	28	72
Midwest	32	69
South	29	71
West	24	77
Cont. Obama Pol.	22	78
Change Direction	38	63
Approve – Trump	45	55
Disapprove – Trump	14	86
Favorable – Trump	46	54
Unfavorable– Trump	15	86
Vote Pres. 2016 – Clinton	17	83
Vote Pres. 2016 – Trump	43	57
Vote Cong. 2020 – GOP	42	58
Vote Cong. 2020 – DEM	18	82
Vote Cong. 2020 – UND	8	92
Republican	40	60
Democrat	24	76
Independent	21	79
Liberal	31	69
Moderate	20	80
Conservative	33	67
No College Degree	27	73
College Graduate	30	70
White	28	72
African- American	22	78
Hispanic	32	68
Under 55	34	66
Over 55	19	81
Married	32	68
Single	26	74
Men	32	68
Women	25	75

From the following list, which social media networks do you use?

	<u>Total</u>	<u>Rep</u>	<u>Dem</u>	<u>Ind</u>	<u>Lib</u>	<u>Mod</u>	<u>Cons</u>	<u>App. DJT</u>	<u>Disapp. DJT</u>	<u>Under 55</u>	<u>Over 55</u>	<u>Men</u>	<u>Wo- men</u>
Facebook	82	85	82	79	82	82	82	82	82	84	78	80	84
Instagram	41	32	48	42	51	41	32	35	46	55	20	36	46
Twitter	35	29	40	37	45	33	29	33	38	44	21	40	31
Pinterest	35	38	34	34	34	35	36	36	35	39	29	22	47
Linked-in	27	25	31	23	34	25	21	26	27	30	22	29	24
Snapchat	23	18	29	22	32	24	15	20	26	36	4	19	26
WhatsApp	14	10	19	11	22	13	7	12	15	20	4	15	12
Reddit	12	7	14	13	16	11	8	10	13	17	4	16	8
Tumblr	8	6	12	7	13	9	3	7	10	13	1	9	8
Periscope	3	1	4	2	4	3	1	3	2	4	1	3	2
Other	3	3	2	4	3	4	4	3	3	3	3	4	3
None	8	7	9	9	7	9	9	7	9	4	15	10	6

2020 Likely General Election Voter Profile

n= 1,000

<u>Party</u>	<u>Total</u>	<u>Age</u>	<u>Total</u>	<u>Region</u>	<u>TOTAL</u>
Republican	33%	18-29	18%	East	18%
Democrat	36%	30-40	20%	Midwest	24%
Independent	31%	41-55	23%	South	37%
<u>Ideology</u>		56-65	20%	West	21%
Liberal	32%	Over 65	20%	<u>Area</u>	
Moderate	32%	<u>Race</u>		Urban	29%
Conservative	36%	White	71%	Suburban	47%
<u>Voting Behavior</u>		African American	12%	Rural	24%
Definitely	85%	Hispanic	12%		
Very likely	12%	Asian	3%		
Somewhat Likely	3%	<u>Gender</u>			
		Male	47%		
		Female	53%		



McLaughlin & Associates

New York Office

566 South Route 303

Blauvelt, NY 10913

845-365-2000

D.C./Virginia Office

919 Prince Street

Alexandria, VA 22314

703-518-4445

www.mclaughlinonline.com