



**India Meteorological Department
Earth System Science Organisation
(Ministry of Earth Sciences)**

INFORMATORY MESSAGE: 01 (ARB 01/2019)

TIME OF ISSUE: 1330 HOURS IST

DATED: 09.06.2019

FROM: INDIA METEOROLOGICAL DEPARTMENT (FAX NO. 24643965/24699216/24623220)
TO: CONTROL ROOM, NDM, MINISTRY OF HOME AFFAIRS (FAX.NO. 23092398/23093750)
CONTROL ROOM NDMA (FAX.NO. 26701729)
CABINET SECRETARIAT (FAX.NO.23012284, 23018638)
PS TO HON'BLE MINISTER FOR S & T AND EARTH SCIENCES (FAX NO.23316745)
SECRETARY, MOES, (FAX NO. 24629777)
H.Q. (INTEGRATED DEFENCE STAFF AND CDS) (FAX NO. 23005137/23005147)
DIRECTOR GENERAL, DOORDARSHAN (23385843)
DIRECTOR GENERAL, AIR (23421101, 23421105, 23421219)
PIB MOES (FAX NO. 23389042)
UNI (FAX NO. 23355841)
D.G. NATIONAL DISASTER RESPONSE FORCE (NDRF) (FAX NO. 26105912, 2436 3260)
DIRECTOR, PUNCTUALITY, INDIAN RAILWAYS (FAX NO. 23388503)
CHIEF SECRETARY, TAMILNADU (FAX NO. 044-25672304)
CHIEF SECRETARY, KERALA (FAX NO. 0471-2327176)
ADMINISTRATOR, LAKSHADWEEP ISLANDS (FAX NO. 0413-262184)
ADMINISTRATOR, UNION TERRITORY OF DAMAN & DIU AND DADRA NAGAR HAVELI (0260-2230775)
CHIEF SECRETARY, KARNATAKA (FAX NO. 080-22258913)
CHIEF SECRETARY, GOA (FAX NO. 0832-2415201)
CHIEF SECRETARY, MAHARASHTRA (FAX NO. 022- 22028594)
CHIEF SECRETARY, GUJARAT (FAX NO. 079-23250305)

Sub: Low pressure area over Southeast and adjoining Lakshadweep & Eastcentral Arabian Sea

A low pressure area formed over Southeast and adjoining Lakshadweep & Eastcentral Arabian Sea. It is very likely to intensify into a depression over Southeast & adjoining Eastcentral Arabian Sea during next 48 hours. It is likely to move north-northwestwards and intensify further into a cyclonic storm during subsequent 24 hours.

Warnings:

(i) Heavy rainfall warning:

Sub-Divisions	09 June 2019 *	10 June 2019 *	11 June 2019*	12 June 2019*	13 June 2019*
Kerala	Widespread rainfall with heavy to very heavy falls at isolated places	Widespread rainfall with heavy falls at isolated places	Widespread rainfall with heavy falls at isolated places	Widespread rainfall with heavy to very heavy falls at isolated places	Widespread rainfall with heavy falls at isolated places
Lakshadweep	Widespread rainfall with heavy falls at isolated places	Widespread rainfall with heavy falls at isolated places	Widespread rainfall	Widespread rainfall	Widespread rainfall
Coastal Karnataka	Fairly widespread rainfall with heavy falls at isolated places	Widespread rainfall with heavy to very heavy falls at isolated places	Widespread rainfall with heavy falls at isolated places	Widespread rainfall with heavy to very heavy falls at isolated places	Widespread rainfall with heavy falls at isolated places
South Interior Karnataka	Fairly widespread rainfall with heavy falls at	Fairly widespread rainfall with heavy falls at	Rainfall at a few places	Rainfall at a few places	Rainfall at a few places

Spatial rainfall distribution: Isolated: <25%, A few: 26-50%, Many: 51-75%, Most: 76-100%

Rainfall amount (mm): Heavy rain: 64.5 – 115.5, Very heavy rain: 115.6 – 204.4, Extremely heavy rain: 204.5 or more.

	isolated places	isolated places			
Konkan & Goa	Rainfall at isolated places	Rainfall at isolated places with isolated heavy falls over Goa	Fairly widespread rainfall with heavy falls at isolated places	Fairly widespread rainfall with heavy falls at isolated places	Fairly widespread rainfall with heavy falls at isolated places
Saurashtra & Kutch	Dry	Dry	Rainfall at isolated places	Rainfall at a few places with heavy rainfall at isolated places	Rainfall at a few places with heavy rainfall at isolated places

Note: * Rainfall till 0830 IST of next day.

Legends: **Yellow: Be Updated; Orange- Be prepared; Red- Take action, Green: No warning**
Heavy rain: 64.5-115.5 mm/day; Very heavy rain: 115.6-204.4 mm/day; Extremely heavy rain: more than 204.4 mm/day

(ii) Wind warning, Sea condition and Fishermen Warning

- Strong wind speed reaching 35-45 kmph gusting to 55 kmph very likely to prevail over southeast and adjoining Lakshadweep & eastcentral Arabian Sea, Kerala & Karnataka Coasts on 09th June, 2019 and very likely to become 40-50 kmph gusting to 60 kmph on 10th June 2019. Sea Conditions are very likely to be rough over the above areas. Fishermen are advised not to venture into above sea areas during the same period.
- Wind speed is very likely to increase gradually and become squally wind speed reaching 55-65 kmph gusting to 75 kmph over eastcentral & adjoining southeast Arabian Sea on 11th June 2019. It is very likely to be 40-50 kmph gusting to 60 kmph over Lakshadweep area, Kerala, Karnataka & south Maharashtra Coasts on the same day. Sea Conditions is likely to be rough over the above areas. Fishermen are advised not to venture into above sea areas during the same period.
- Wind speed is very likely to increase further becoming gale wind speed reaching **70-80 kmph gusting to 90 kmph** over eastcentral & adjoining northeast Arabian Sea on 12th June 2019 and become **90-100 kmph gusting to 110 kmph** over north Arabian Sea on 13th June 2019. It is very likely to be 45-55 kmph gusting to 65 kmph over Gujarat & Maharashtra Coasts on 12th and 55-65 kmph gusting to 75 kmph over entire Gujarat and north Maharashtra Coasts on 13th June, 2019.
- Sea Conditions is likely to be very rough to high over eastcentral & adjoining northeast Arabian Sea on 12th and over north Arabian Sea on 13th June. It is likely to be rough to very rough over Gujarat & Maharashtra Coasts on 12th & 13th and over eastcentral Arabian Sea on 13th June, 2019. Fishermen are advised not to venture into above sea areas during the same period.

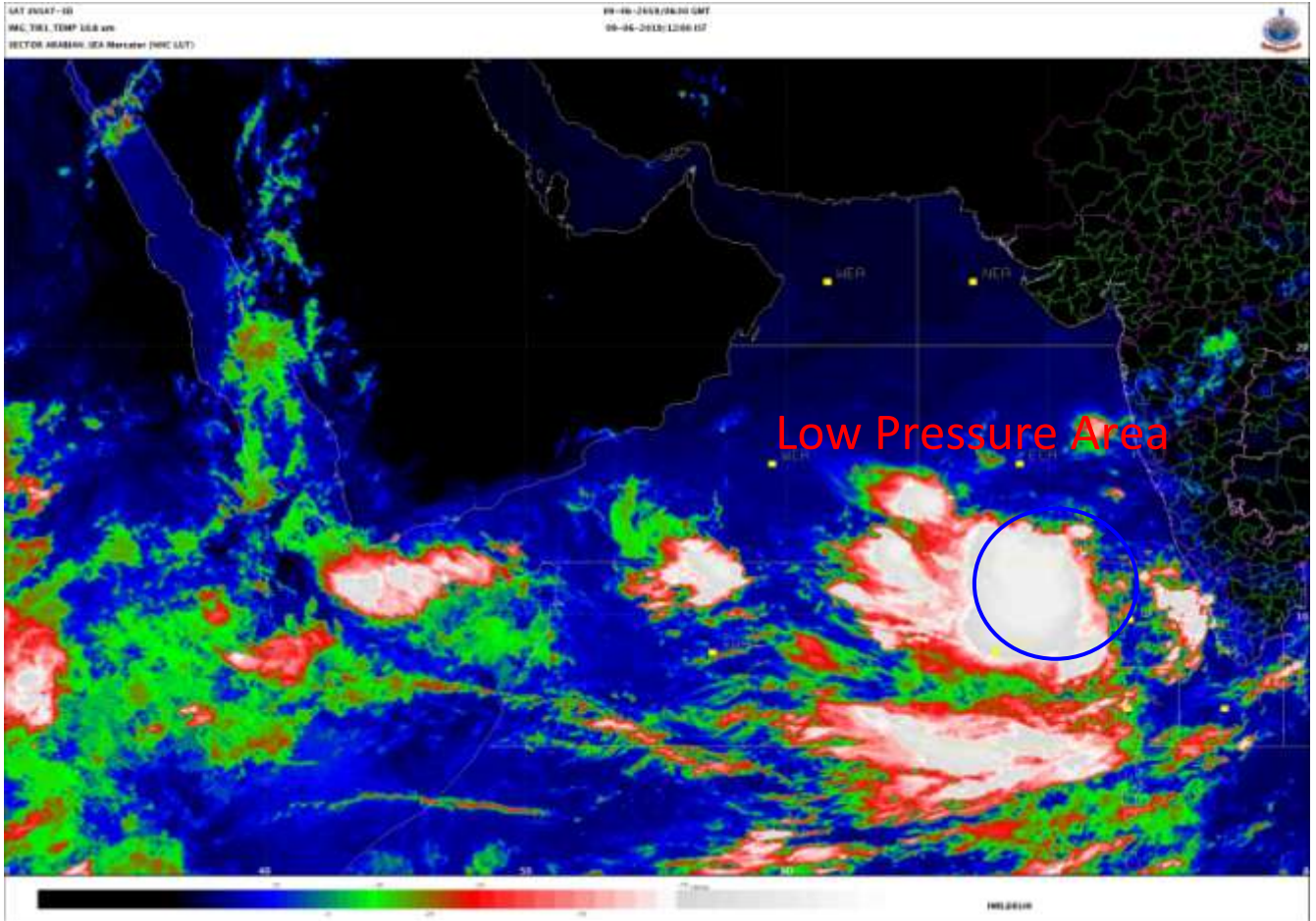
Kindly visit www.imd.gov.in and www.rsmcnewdelhi.imd.gov.in for updates on the system.

Next update will be issued at 1330 hours IST of tomorrow, the 10th June, 2019

(Neetha K. Gopal)
Scientist-E, RSMC, New Delhi

Copy to: CRS, Pune/ ACWC Chennai/ ACWC Mumbai/ MC Goa/ MC Bengaluru/ CWC Ahmedabad/ Thiruvananthapuram.

Spatial rainfall distribution: Isolated: <25%, A few: 26-50%, Many: 51-75%, Most: 76-100%
Rainfall amount (mm): Heavy rain: 64.5 – 115.5, Very heavy rain: 115.6 – 204.4, Extremely heavy rain: 204.5 or more.



Spatial rainfall distribution: Isolated: <25%, A few: 26-50%, Many: 51-75%, Most: 76-100%
Rainfall amount (mm): Heavy rain: 64.5 – 115.5, Very heavy rain: 115.6 – 204.4, Extremely heavy rain: 204.5 or more.