



**India Meteorological Department  
Earth System Science Organisation  
(Ministry of Earth Sciences)**

**BULLETIN NO. : 01 (ARB/01/2019)**

**TIME OF ISSUE: 0900 HOURS IST**

**DATED: 10.06.2019**

**FROM: INDIA METEOROLOGICAL DEPARTMENT (FAX NO. 24643965/24699216/24623220)**

**TO: CONTROL ROOM, NDM, MINISTRY OF HOME AFFAIRS (FAX.NO. 23092398/23093750)**

**CONTROL ROOM NDMA (FAX.NO. 26701729)**

**CABINET SECRETARIAT (FAX.NO.23012284, 23018638)**

**PS TO HON'BLE MINISTER FOR S & T AND EARTH SCIENCES (FAX NO.23316745)**

**SECRETARY, MOES, (FAX NO. 24629777)**

**H.Q. (INTEGRATED DEFENCE STAFF AND CDS) (FAX NO. 23005137/23005147)**

**DIRECTOR GENERAL, DOORDARSHAN (23385843)**

**DIRECTOR GENERAL, AIR (23421101, 23421105, 23421219)**

**PIB MOES (FAX NO. 23389042)**

**UNI (FAX NO. 23355841)**

**D.G. NATIONAL DISASTER RESPONSE FORCE (NDRF) (FAX NO. 26105912, 2436 3260)**

**DIRECTOR, PUNCTUALITY, INDIAN RAILWAYS (FAX NO. 23388503)**

**CHIEF SECRETARY, TAMILNADU (FAX NO. 044-25672304)**

**CHIEF SECRETARY, KERALA (FAX NO. 0471-2327176)**

**ADMINISTRATOR, LAKSHADWEEP ISLANDS (FAX NO. 0413-262184)**

**ADMINISTRATOR, UNION TERRITORY OF DAMAN & DIU AND DADRA NAGAR HAVELI (0260-2230775)**

**CHIEF SECRETARY, KARNATAKA (FAX NO. 080-22258913)**

**CHIEF SECRETARY, GOA (FAX NO. 0832-2415201)**

**CHIEF SECRETARY, MAHARASHTRA (FAX NO. 022- 22028594)**

**CHIEF SECRETARY, GUJARAT (FAX NO. 079-23250305)**

**Sub: Depression over Southeast and adjoining Lakshadweep & Eastcentral Arabian Sea.**

Latest satellite imageries and surface observations indicate that a depression has formed over Southeast and adjoining Lakshadweep & Eastcentral Arabian Sea and lay centred at 0530 hrs IST of today, the 10<sup>th</sup> June, 2019 near latitude 11.7°N and longitude 71.0°E, about 200 km west-northwest of Aminidivi (Lakshadweep), 840 km south-southwest of Mumbai (Maharashtra) and 1020 km south-southeast of Veraval (Gujarat). It is very likely to intensify further into a deep depression during next 12 hours and into a Cyclonic Storm during the subsequent 24 hours. It is likely to move north-northwestwards during next 72 hours.

**Warnings:**

**(i) Heavy rainfall warning:**

Sub-Divisions	10 June 2019 *	11 June 2019*	12 June 2019*	13 June 2019*	14 June 2019*
<b>Kerala</b>	Widespread rainfall with heavy falls at isolated places	Widespread rainfall with heavy falls at isolated places	Widespread rainfall with heavy to very heavy falls at isolated places	Widespread rainfall with heavy falls at isolated places	Widespread rainfall with heavy falls at isolated places
<b>Lakshadweep area</b>	Widespread rainfall with heavy falls at isolated places	Widespread rainfall	Widespread rainfall	Widespread rainfall	Widespread rainfall
<b>Coastal Karnataka</b>	Widespread rainfall with heavy to very heavy falls at isolated places	Widespread rainfall with heavy falls at isolated places	Widespread rainfall with heavy to very heavy falls at isolated places	Widespread rainfall with heavy falls at isolated places	Fairly widespread rainfall
<b>South Interior Karnataka</b>	Fairly widespread rainfall with heavy falls at isolated places	Rainfall at a few places	Rainfall at a few places	Rainfall at a few places	Rainfall at a few places

**Spatial rainfall distribution: Isolated: <25%, A few: 26-50%, Many: 51-75%, Most: 76-100%**

**Rainfall amount (mm): Heavy rain: 64.5 – 115.5, Very heavy rain: 115.6 – 204.4, Extremely heavy rain: 204.5 or more.**

<b>Konkan &amp; Goa</b>	Rainfall at isolated places with isolated heavy falls over Goa	Fairly widespread rainfall with heavy falls at isolated places	Fairly widespread rainfall with heavy falls at isolated places	Fairly widespread rainfall with heavy falls at isolated places	Fairly widespread rainfall
<b>Saurashtra &amp; Kutch</b>	Dry	Rainfall at isolated places	Rainfall at a few places with heavy rainfall at isolated places	Rainfall at a few places with heavy rainfall at isolated places	Rainfall at a few places

Note: \* Rainfall till 0830 IST of next day.

Legends:

**Yellow: Be Updated; Orange- Be prepared; Red- Take action, Green: No warning**

Heavy rain: 64.5-115.5 mm/day; Very heavy rain: 115.6-204.4 mm/day; Extremely heavy rain: more than 204.4 mm/day

## (ii) Wind warning

- **10<sup>th</sup> June:** Squally wind speed reaching 40-50 kmph gusting to 60 kmph very likely to prevail over Southeast and adjoining Lakshadweep area & Eastcentral Arabian Sea. The strong wind speed reaching 35-45 kmph gusting to 55 kmph very likely to prevail over Kerala & Karnataka Coasts.
- **11<sup>th</sup> June:** Wind speed is very likely to increase gradually and become squally wind speed reaching 55-65 kmph gusting to 75 kmph over eastcentral & adjoining southeast Arabian Sea. It is very likely to be 40-50 kmph gusting to 60 kmph over Lakshadweep area, Kerala, Karnataka & south Maharashtra Coasts.
- **12<sup>th</sup> June:** Wind speed is very likely to increase further becoming gale wind speed reaching **70-80 kmph gusting to 90 kmph** over eastcentral & adjoining northeast Arabian Sea. It is very likely to be 45-55 kmph gusting to 65 kmph over Gujarat & Maharashtra Coasts.
- **13<sup>th</sup> June:** Wind speed is very likely to increase further becomes **90-100 kmph gusting to 110 kmph** over north Arabian Sea. It is very likely to be 55-65 kmph gusting to 75 kmph over Gujarat and north Maharashtra Coasts.

## (iii) Sea condition

- The sea condition is very likely to be rough to very rough over Southeast and adjoining Lakshadweep area & Eastcentral Arabian Sea on 10<sup>th</sup> and very rough to high over eastcentral & adjoining southeast Arabian Sea on 11<sup>th</sup>. The sea condition is very likely to be high to very high over eastcentral & adjoining northeast Arabian Sea on 12<sup>th</sup> and over north Arabian Sea on 13<sup>th</sup> June 2019.
- The sea condition is very likely to be rough along & off Kerala & Karnataka Coasts on 10<sup>th</sup>; Lakshadweep area, along & off Kerala, Karnataka & south Maharashtra Coasts on 11<sup>th</sup>; rough to very rough along & off Gujarat and north Maharashtra Coasts on 12<sup>th</sup> & 13<sup>th</sup>.

## (i) Fishermen Warning

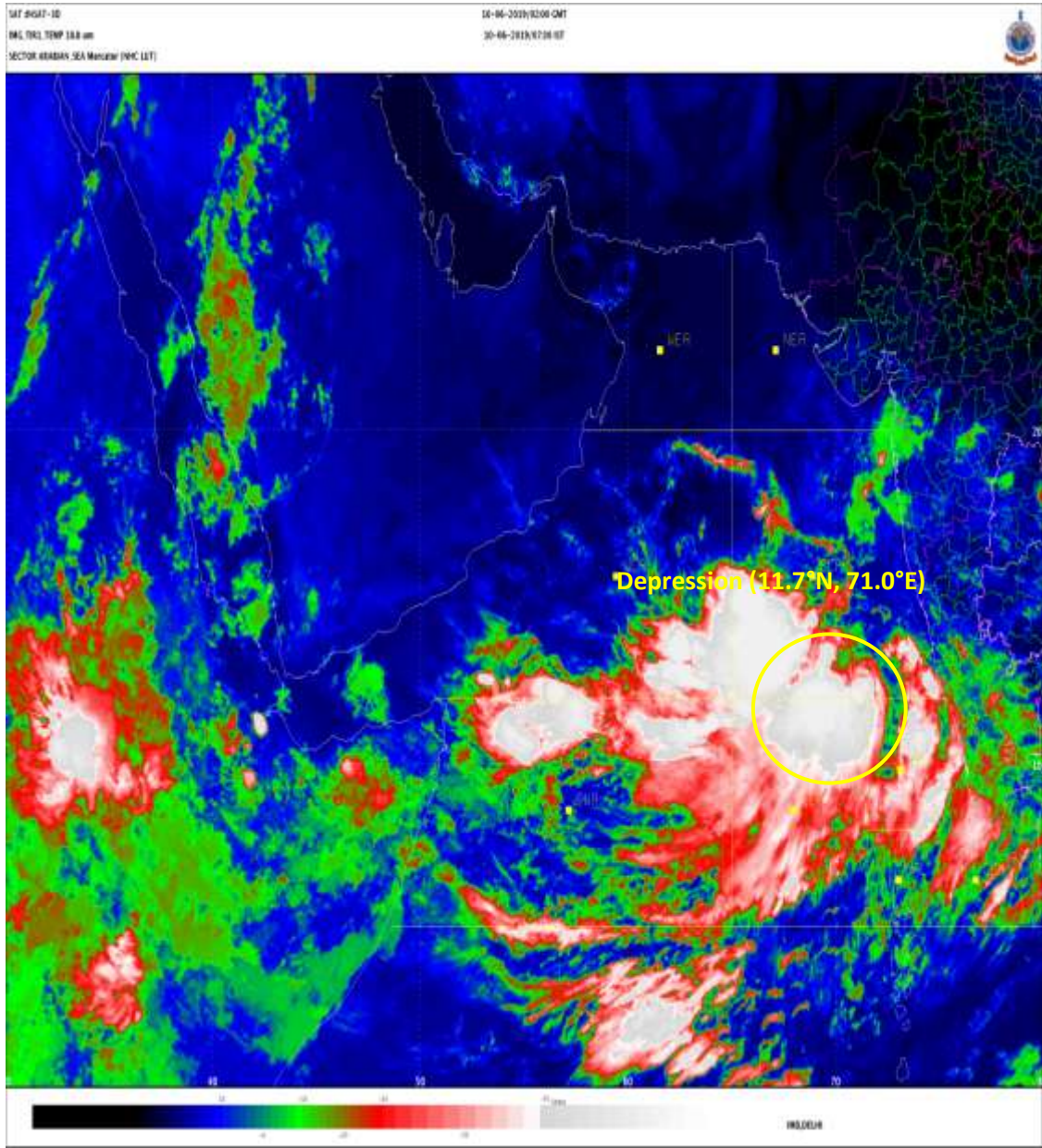
- The fishermen are advised not to venture into Southeast Arabian Sea, Lakshadweep area, along & off Kerala and Karnataka on 10<sup>th</sup> & 11<sup>th</sup>; Eastcentral Arabian Sea and along & off Maharashtra Coast on 11<sup>th</sup> & 12<sup>th</sup>; northeast Arabian sea and along & off Gujarat coast on 12<sup>th</sup> & 13<sup>th</sup>.
- Those, who are out in deep sea areas are advised return to the coast.

The next bulletin will be issued at 1130 hrs IST of 10<sup>th</sup> June, 2019.

**(Naresh Kumar)**  
Scientist-E, RSMC, New Delhi

Copy to: CRS, Pune/ ACWC Chennai/ ACWC Mumbai/ MC Goa/ MC Bengaluru/ CWC Ahmedabad/ Thiruvananthapuram.

Spatial rainfall distribution: Isolated: <25%, A few: 26-50%, Many: 51-75%, Most: 76-100%  
Rainfall amount (mm): Heavy rain: 64.5 – 115.5, Very heavy rain: 115.6 – 204.4, Extremely heavy rain: 204.5 or more.



**Spatial rainfall distribution: Isolated: <25%, A few: 26-50%, Many: 51-75%, Most: 76-100%**  
**Rainfall amount (mm): Heavy rain: 64.5 – 115.5, Very heavy rain: 115.6 – 204.4, Extremely heavy rain: 204.5 or more.**