



AGENDA ITEM NO.4: REVIEW OF THE 2016/2017 AND 2017/2018 CYCLONE SEASONS

AGENDA ITEM NO.4.2: COUNTRY REPORT

AGENDA ITEM NO.4.2(1): NIUE

Members who have experienced impacts of tropical cyclones and/or other severe weather events during these two seasons will be invited to submit to the session concise reports on operations, functioning, interactions and coordination with stakeholders, and lessons learned from their National Warning Systems and Services during these events, including measures already taken as a consequence and proposals. The Committee may wish to review these reports and discuss operational matters and shortcomings with a view to improving national early warning services.

1. Impacts related of tropical cyclones or other severe weather events

2016 - 2017 Tropical Cyclone Season & 2017 - 2018 Tropical Cyclone Season

Tropical Cyclone Season November 2016 - April 2017

1.1 Introduction

(a) The 2016-2017 South Pacific cyclone season was the least active with 22 systems and only four tropical cyclones occurring within the South Pacific Ocean. Two of the four systems developed into severe tropical cyclone Cook and Donna. However, the month of May featured two post- systems Donna and Ella.

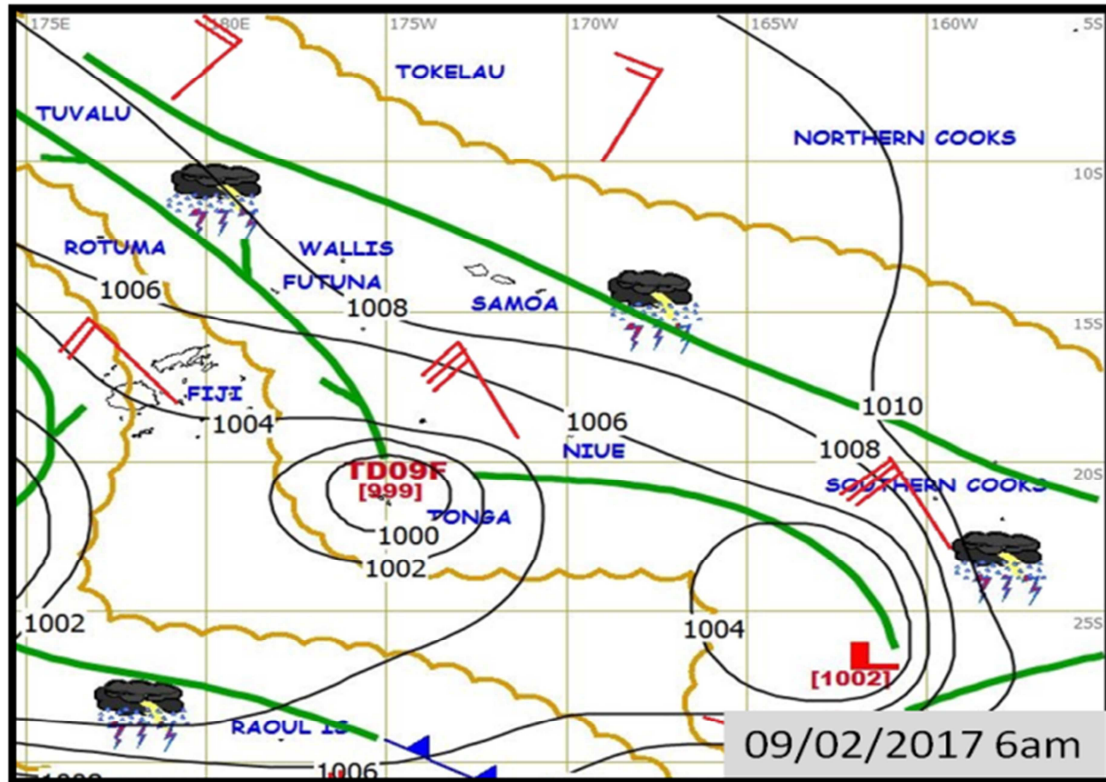
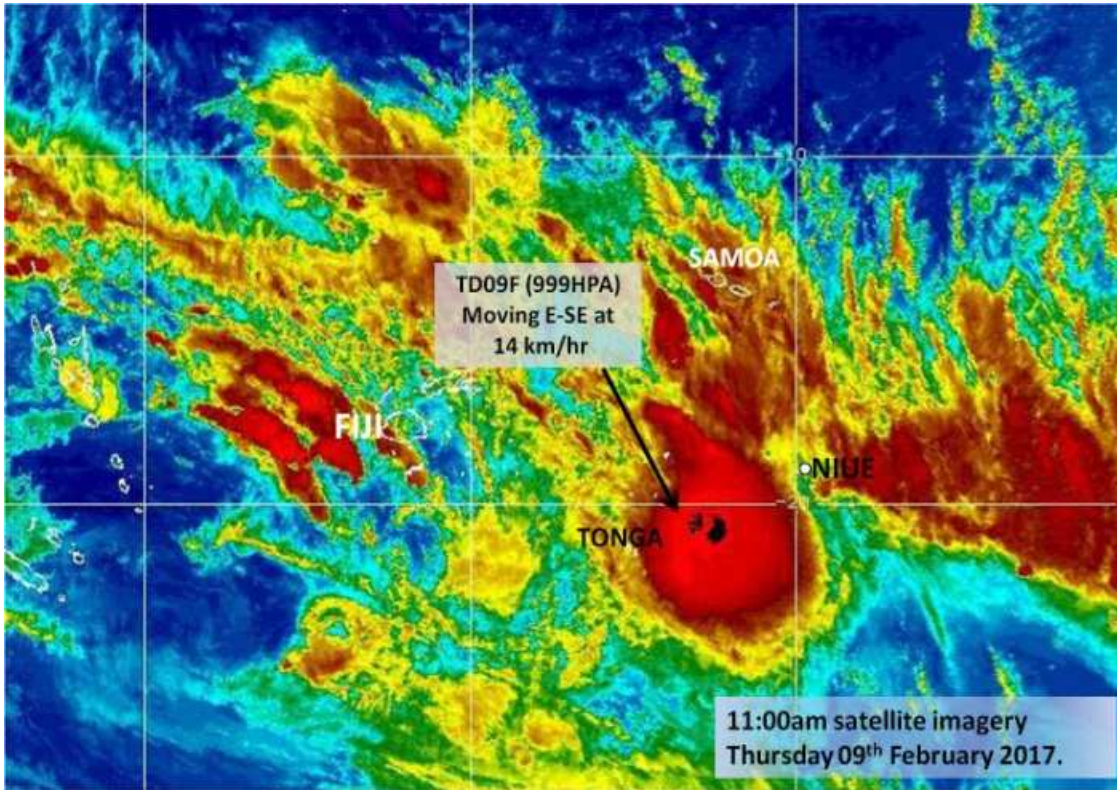
1.2 Three systems affected Niue: TD09F, TD14F and TD22F that later developed into TC Ella.

(a) TD09F

Tropical Disturbance 09F formed to the far west-southwest of Niue on 04th February 2017. It moved east-southeast and dissipated on the 11th February 2017.

A strong wind warning was in force for land and waters of Niue from 09th February 2017. Maximum wind speed recorded at Hanan Airport reached up to 27 km/hr with gust of 57 km/hr at 11pm, Thursday 09th February 2017.

TD09F was closest to Niue on Thursday 09th February 2017 at 1pm, approximately 410 kilometres southwest of Niue.



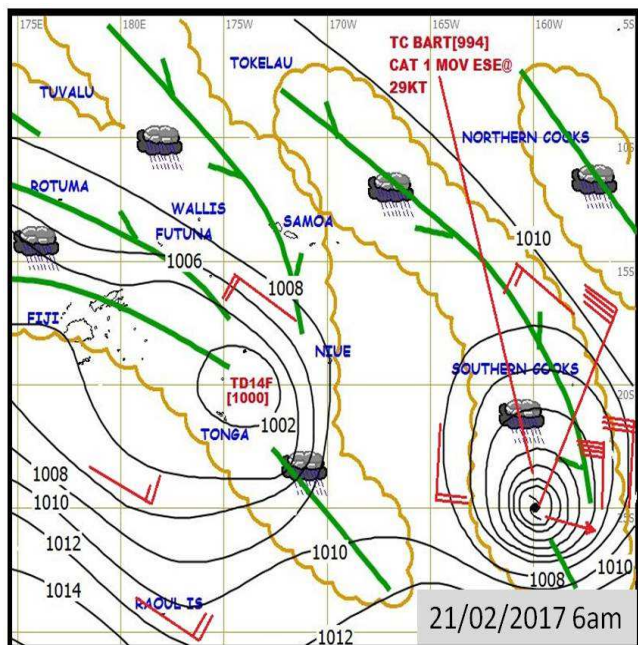
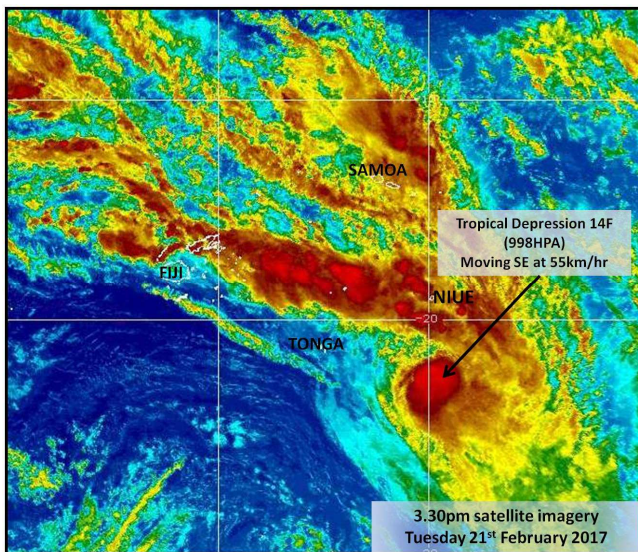
(b) TD14F

Tropical Disturbance 14F affected Niue with strong winds and very rough seas, which then resulted in a Blue Alert being issued at 5pm, Wednesday 22nd February 2017.

Maximum wind speeds recorded at Hanan Airport reaching up to 46 km/hr with gust of 81km/hr at 12pm Wednesday 22nd February 2017.

TD 14F was closest to Niue on Tuesday 21st February 2017 at 1pm approximately 396 km to the south-southwest of Niue.

This system caused damage to vegetation and sea tracks mostly on the northern side of Niue, in particular to the sea track Hio (Tuapa village), Limu (Namukulu village), Talava (Hikutavake), Vaia (Alofi North Village) and Utuko (Alofi South Village).

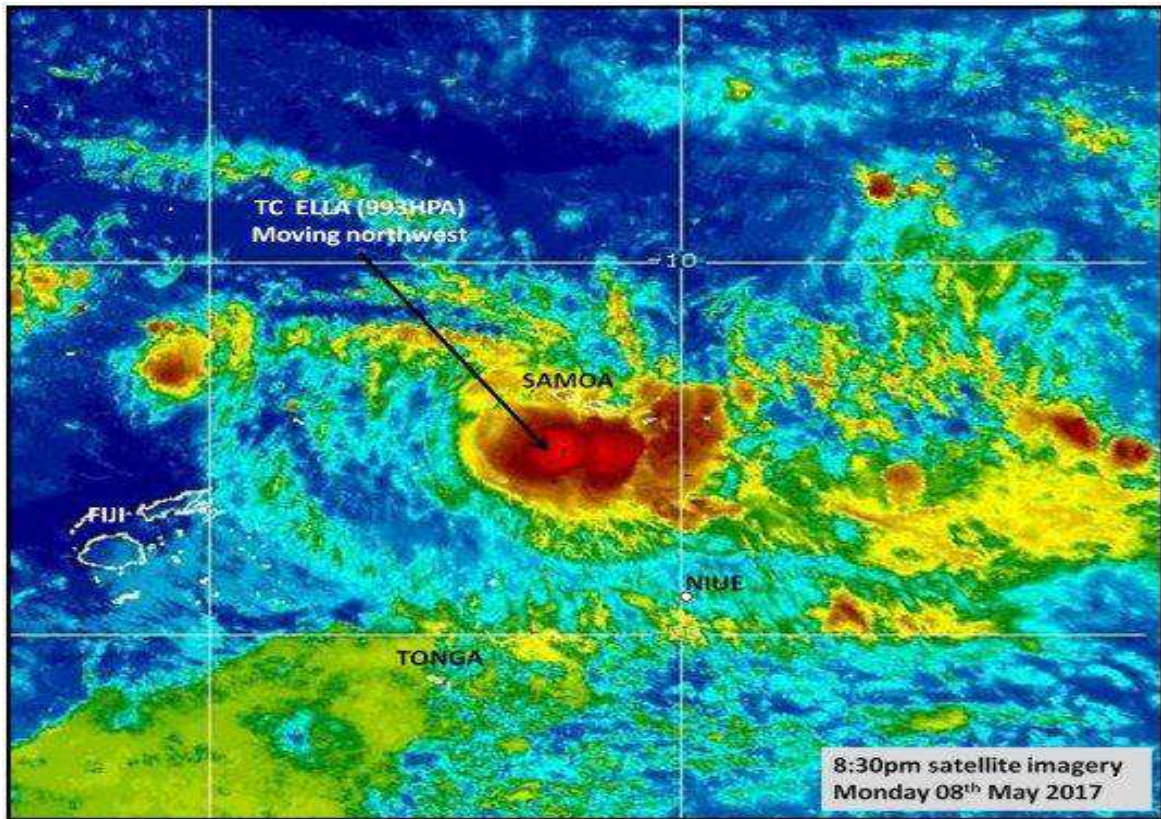


(c) TC ELLA (TD22F)

Tropical Disturbance 22F developed on Sunday 6th May 2017 then upgraded to TC Ella in the evening, Monday 08th May 2017.

A strong wind warning for Land and water was in forced for Niue from Sunday 7th May 2017. Maximum wind speed recorded at Hanan Airport reaching up to 37 km/hr with gust of 68 km/hr at 1pm, Monday 08th May 2017.

TC Ella was closest to the island on Tuesday 09th May 2017 at 1am, approximately 489 km to the northwest of Niue.



Tropical Cyclone Season November 2017 - April 2018

2.1 Introduction

The 2017 – 2018 South Pacific cyclone season is the periods of the year when most tropical cyclones form within the South Pacific Ocean. It was most active with 13 systems forming into 6 tropical cyclones between January to early April, with 3 that developed into Severe Tropical Cyclone Gita, Hola and Keni.

The majority of system development and cyclone formation occurred mainly in the Western Pacific Ocean, before intensifying into a tropical cyclone. The systems that formed near Vanuatu was TC Gita (TD07F), TC Hola (TD09F), TC Josie (TD12F) and TC Keni (TD13F) while TC Fehi (TD06F) formed near Noumea, New Caledonia, while TC Iris (TD11F) was formed near Solomon Islands.

2.2 Only one system affected Niue which is TC Gita from Friday 09th to Sunday 11th April 2018.

(a) TC Gita (TD07F)

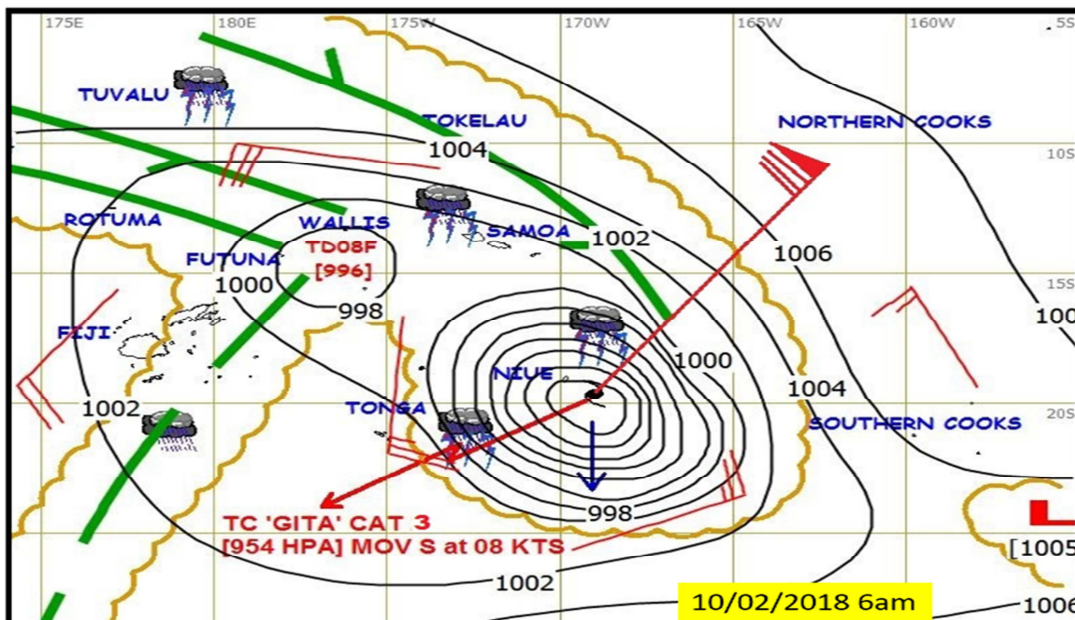
Tropical Depression 07F formed over to the west of Vanuatu on the 03rd February as it slowly moved eastwards before forming into Tropical Cyclone Gita at 7pm, 08th February 2018.

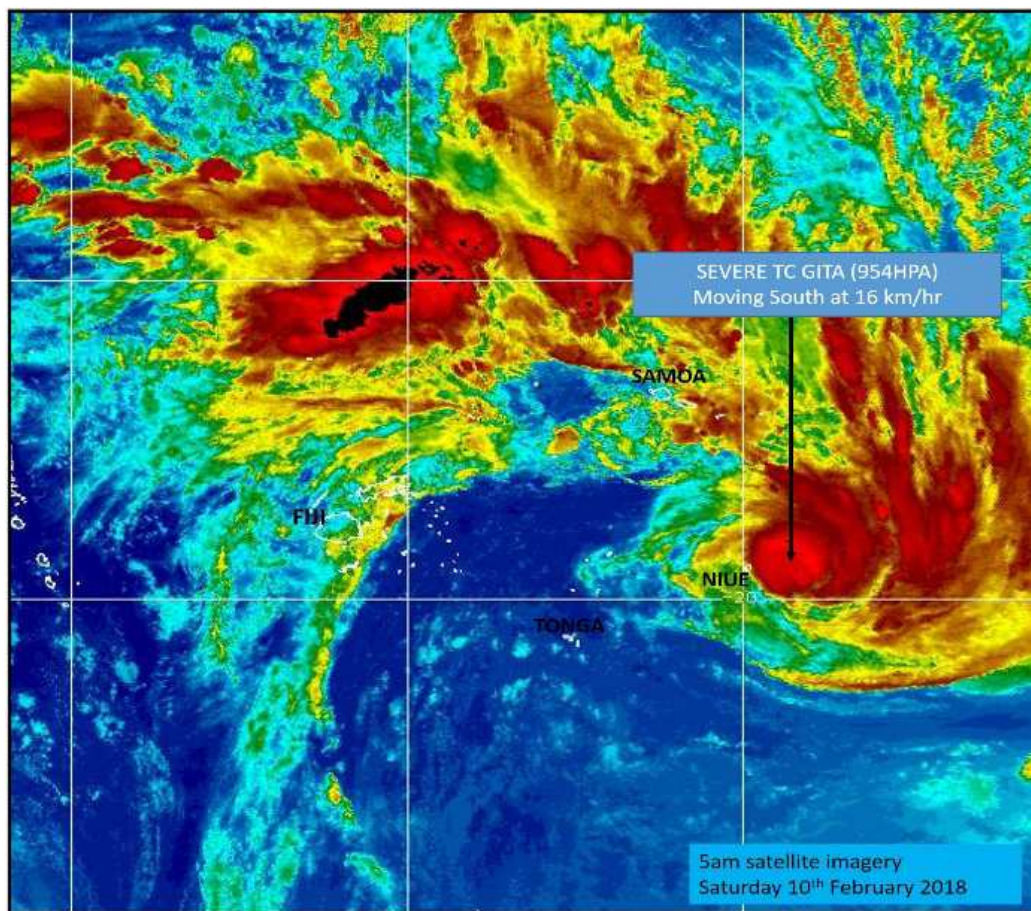
A Special Weather Bulletin was issued for Niue at 10:30pm Thursday 08th February 2018, as TC Gita was about 735 km to the northwest of Niue. Final Special Weather Bulletin was issued at 6:30am on Sunday 11th February 2018.

A blue alert was issued in the evening on Friday 09th February and cancelled on Sunday afternoon as Gita continued to track away from Niue.

Maximum wind speeds recorded at Hanan Airport reached up to 40 km/hr with gusts of 64 km/hr at 4am, Saturday 10th February 2018, while QNH pressure reached a low of 990.7hpa.

TC Gita category 3 was closest to Niue on Saturday 10th February 2018 at 5am about 150 km to the east of Niue.





2 Coordination with emergency managers and other stakeholders

Niue Meteorological Service provides consultations and weather warning briefings to the following stakeholders.

Niue Disaster Council (NDC): Council issues the alert phases (Blue, Yellow and Red)

- Niue Police (Chief coordinator of the disaster response)
- Niue Disaster Management Officer (Acts as secretariat of the NDC in sending out the alerts)
- Chair of the NDC, Secretary of Government (SOG)

Broadcasting Corporation of Niue (BCN)

- Communication mediums such as radio and television for weather warnings, images and updates

Director General and Minister of the Ministry of Natural Resources: Regular updates by Director