



National Survey Results
2020 General Election Likely Voters
Political Environment, Trends & Analysis

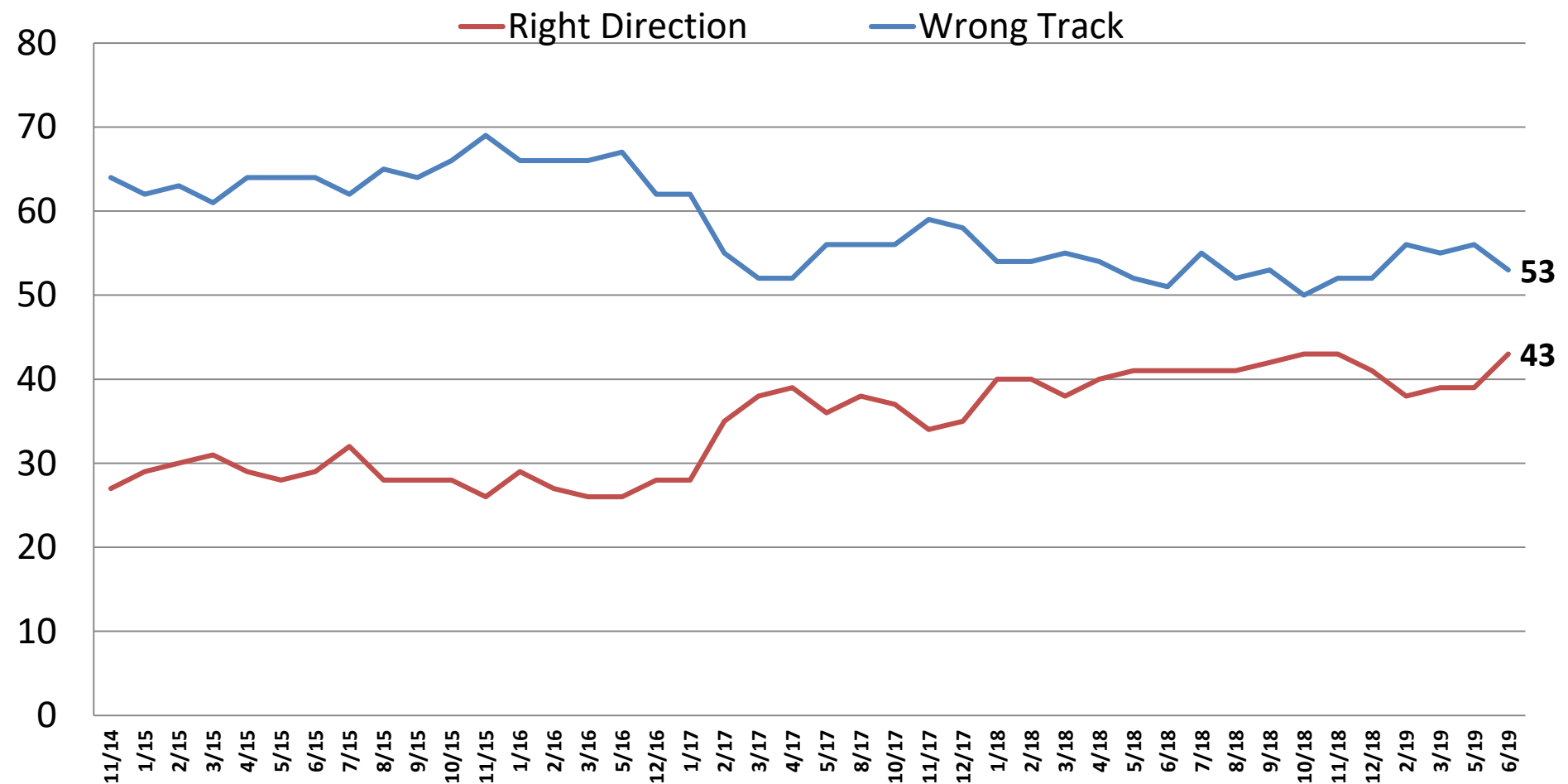
June 2019

On the web

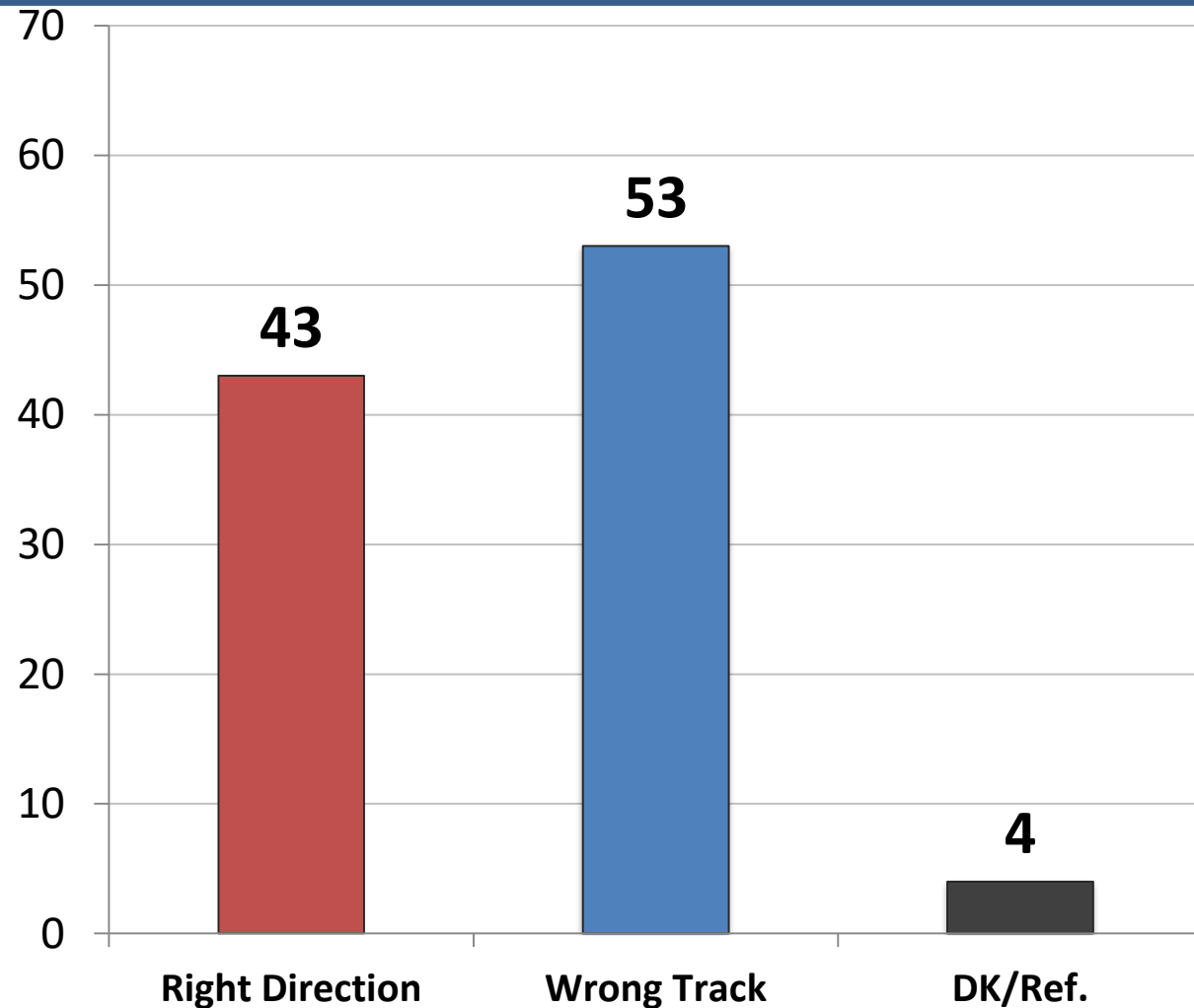
www.mclaughlinonline.com

Direction: United States

Time Series



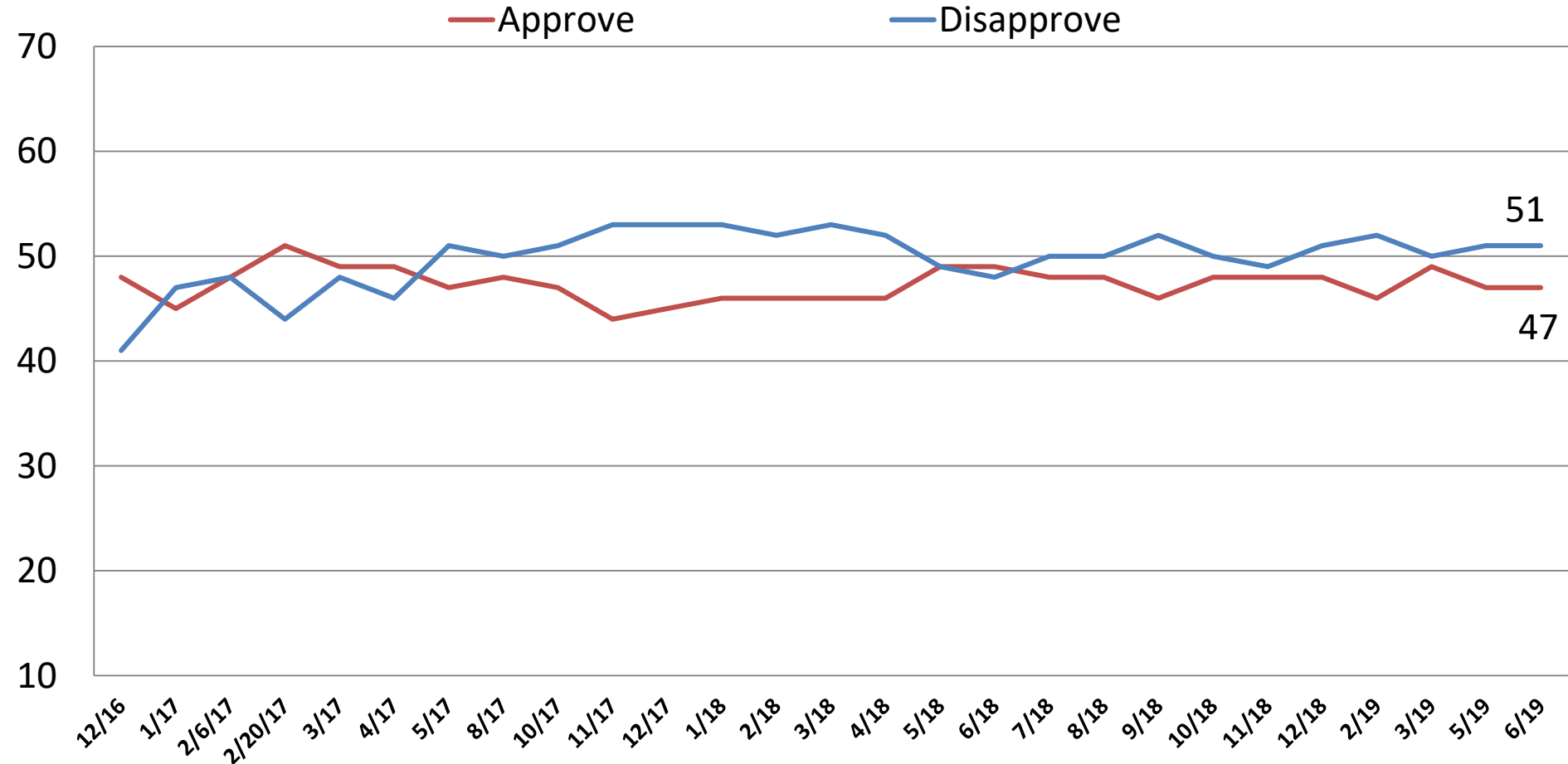
Direction: *United States*



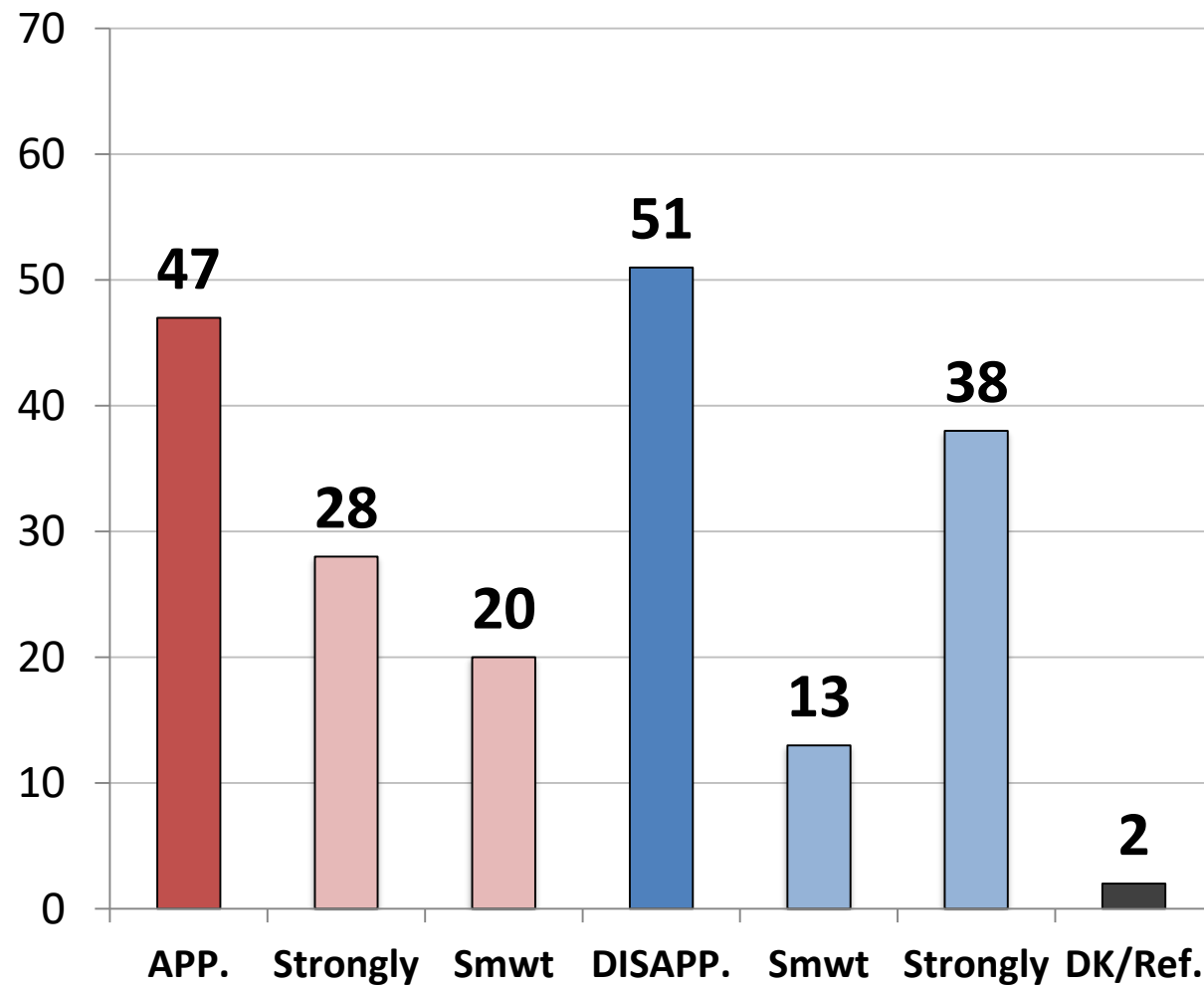
| | <u>R</u> | <u>W</u> |
|---------------------------|----------|----------|
| East | 33 | 62 |
| Midwest | 43 | 53 |
| South | 51 | 45 |
| West | 36 | 61 |
| Cont. Obama Pols. | 20 | 77 |
| Change Direction | 71 | 27 |
| Approve – Trump | 80 | 17 |
| Disapprove – Trump | 9 | 88 |
| Favorable – Trump | 81 | 17 |
| Unfavorable – Trump | 10 | 86 |
| Vote Pres. 2016 – Clinton | 12 | 84 |
| Vote Pres. 2016 – Trump | 76 | 22 |
| Vote Cong. 2020 – GOP | 74 | 24 |
| Vote Cong. 2020 – DEM | 13 | 83 |
| Vote Cong. 2020 – UND | 30 | 56 |
| Republican | 78 | 20 |
| Democrat | 16 | 80 |
| Independent | 37 | 57 |
| Liberal | 25 | 72 |
| Moderate | 34 | 61 |
| Conservative | 67 | 30 |
| No College Degree | 43 | 53 |
| College Graduate | 43 | 54 |
| White | 46 | 50 |
| African- American | 21 | 75 |
| Hispanic | 48 | 49 |
| Under 55 | 43 | 52 |
| Over 55 | 43 | 56 |
| Married | 48 | 49 |
| Single | 38 | 56 |
| Men | 47 | 50 |
| Women | 39 | 57 |

Job Rating: Donald Trump

Time Series



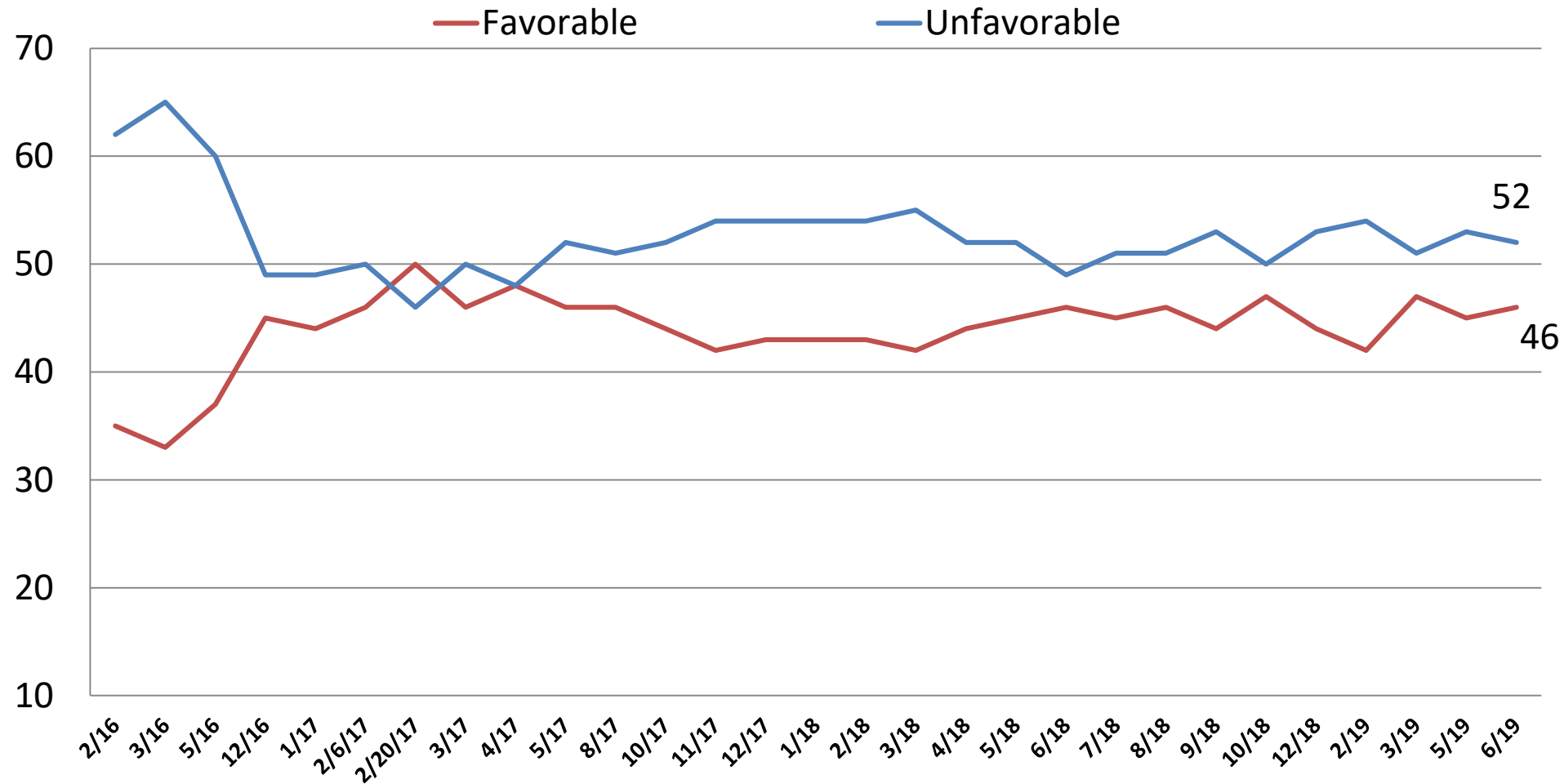
Job Rating: *Donald Trump*



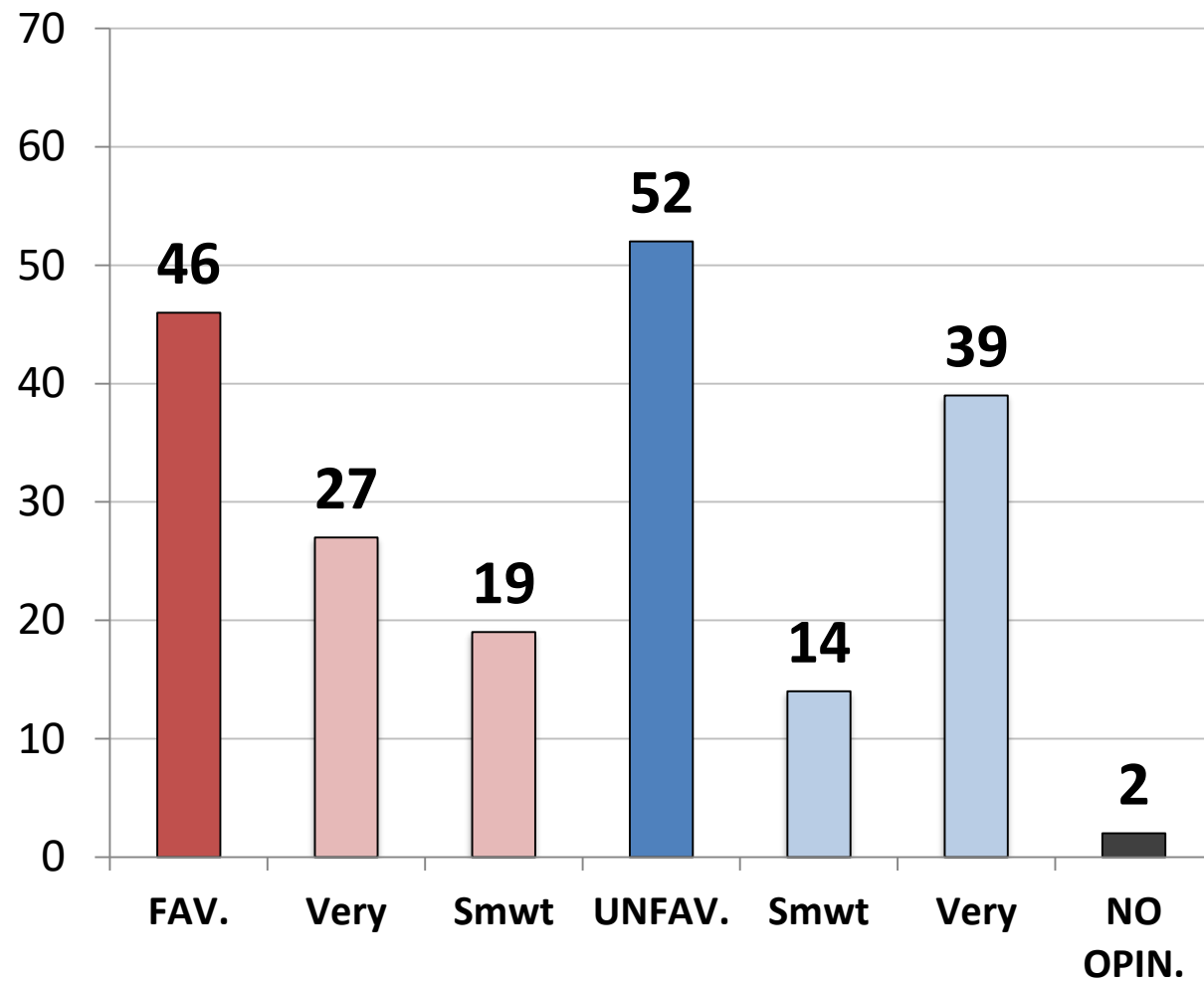
| | <u>App.</u> | <u>Disapp.</u> |
|---------------------------|-------------|----------------|
| East | 39 | 59 |
| Midwest | 49 | 48 |
| South | 53 | 46 |
| West | 42 | 56 |
| Cont. Obama Pols. | 17 | 82 |
| Change Direction | 85 | 15 |
| Approve – Trump | 100 | 0 |
| Disapprove – Trump | 0 | 100 |
| Favorable – Trump | 96 | 3 |
| Unfavorable– Trump | 6 | 93 |
| Vote Pres. 2016 – Clinton | 11 | 89 |
| Vote Pres. 2016 – Trump | 89 | 10 |
| Vote Cong. 2020 – GOP | 85 | 14 |
| Vote Cong. 2020 – DEM | 10 | 89 |
| Vote Cong. 2020 – UND | 38 | 52 |
| Republican | 87 | 12 |
| Democrat | 14 | 85 |
| Independent | 44 | 53 |
| Liberal | 26 | 74 |
| Moderate | 35 | 62 |
| Conservative | 78 | 21 |
| No College Degree | 48 | 51 |
| College Graduate | 47 | 51 |
| White | 52 | 47 |
| African- American | 25 | 75 |
| Hispanic | 50 | 50 |
| Under 55 | 47 | 51 |
| Over 55 | 49 | 51 |
| Married | 54 | 45 |
| Single | 40 | 57 |
| Men | 51 | 47 |
| Women | 44 | 54 |

Opinion: Donald Trump

Time Series

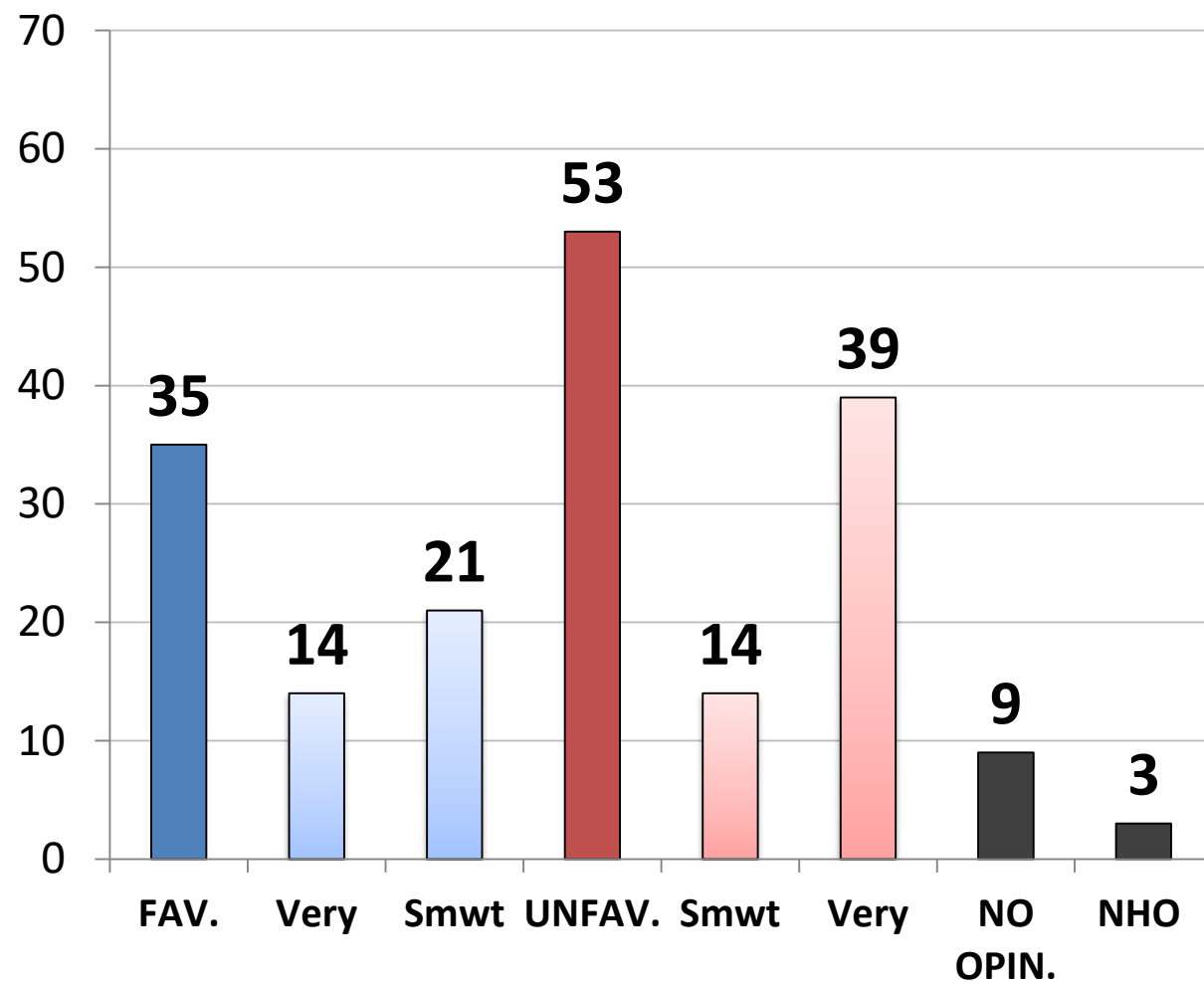


Opinion: Donald Trump



| | Fav. | Unfav |
|---------------------------|------|-------|
| East | 37 | 61 |
| Midwest | 48 | 50 |
| South | 51 | 47 |
| West | 42 | 58 |
| Cont. Obama Pols. | 16 | 84 |
| Change Direction | 84 | 15 |
| Approve – Trump | 92 | 7 |
| Disapprove – Trump | 3 | 96 |
| Favorable – Trump | 100 | 0 |
| Unfavorable– Trump | 0 | 100 |
| Vote Pres. 2016 – Clinton | 8 | 90 |
| Vote Pres. 2016 – Trump | 88 | 11 |
| Vote Cong. 2020 – GOP | 85 | 14 |
| Vote Cong. 2020 – DEM | 9 | 90 |
| Vote Cong. 2020 – UND | 24 | 60 |
| Republican | 87 | 12 |
| Democrat | 12 | 86 |
| Independent | 40 | 56 |
| Liberal | 24 | 75 |
| Moderate | 31 | 65 |
| Conservative | 78 | 21 |
| No College Degree | 46 | 52 |
| College Graduate | 45 | 53 |
| White | 50 | 49 |
| African- American | 21 | 73 |
| Hispanic | 47 | 52 |
| Under 55 | 44 | 53 |
| Over 55 | 47 | 51 |
| Married | 50 | 48 |
| Single | 39 | 58 |
| Men | 50 | 48 |
| Women | 42 | 56 |

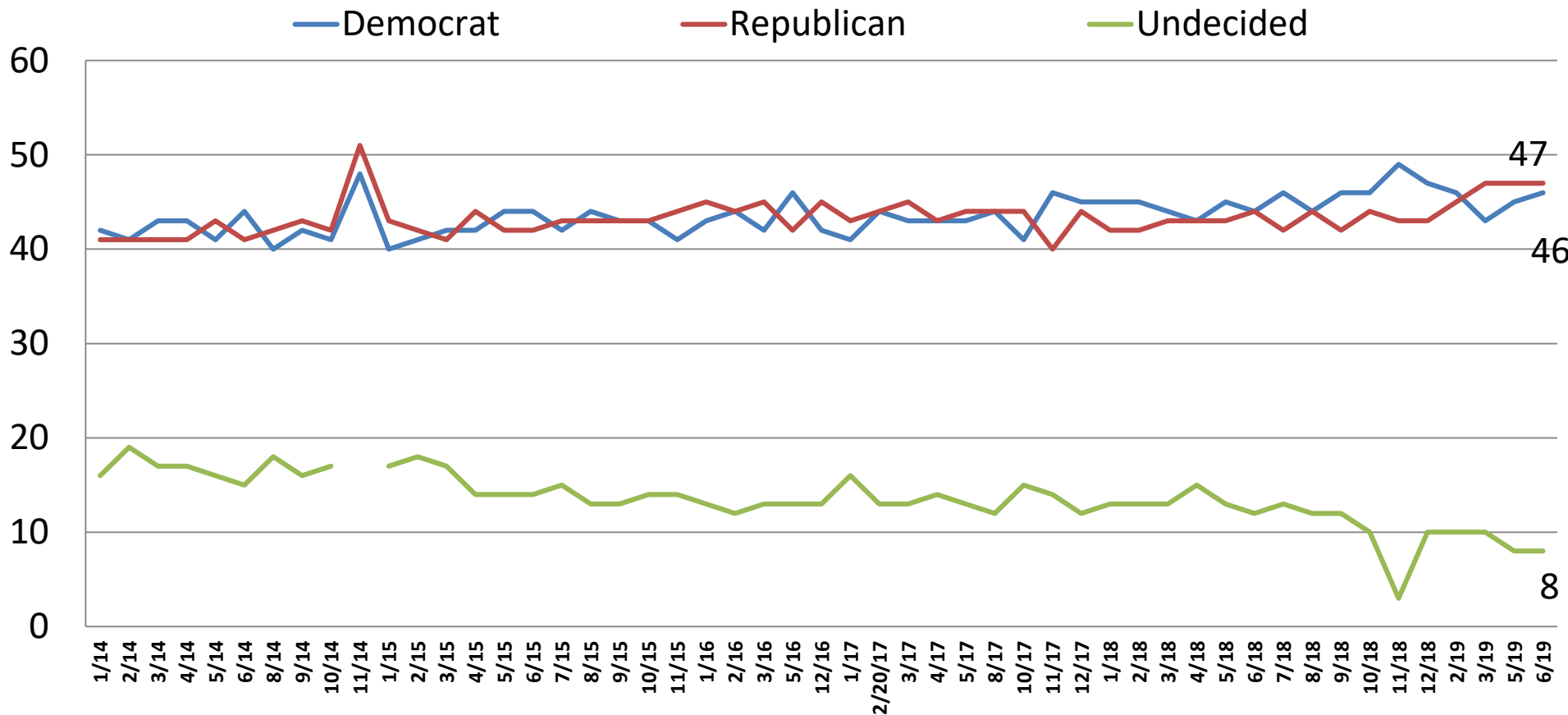
Opinion: *Nancy Pelosi*



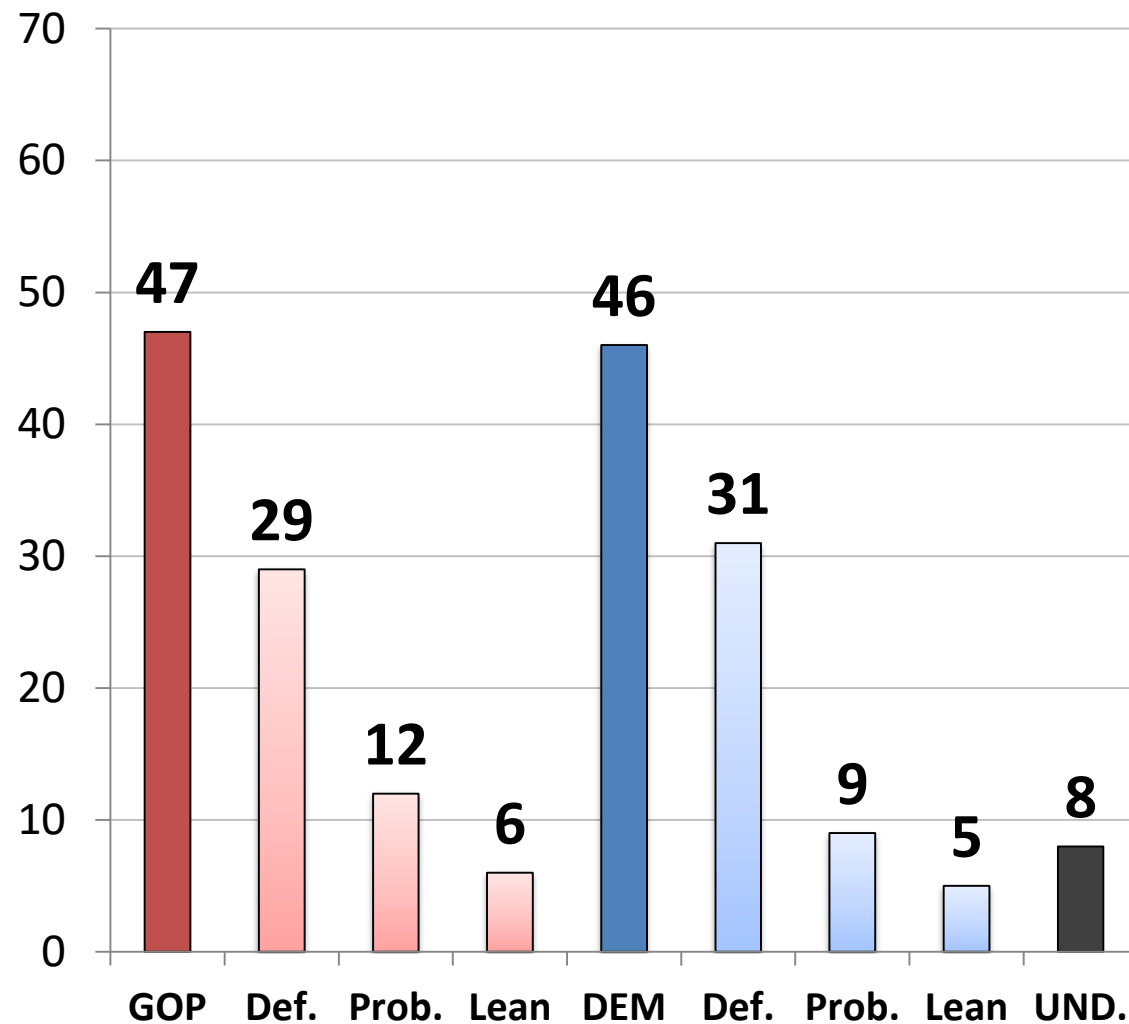
| | Fav. | Unfav. |
|---------------------------|------|--------|
| East | 39 | 48 |
| Midwest | 33 | 54 |
| South | 32 | 58 |
| West | 40 | 45 |
| Cont. Obama Pols. | 61 | 25 |
| Change Direction | 12 | 81 |
| Approve – Trump | 20 | 73 |
| Disapprove – Trump | 51 | 34 |
| Favorable – Trump | 20 | 74 |
| Unfavorable – Trump | 50 | 35 |
| Vote Pres. 2016 – Clinton | 60 | 26 |
| Vote Pres. 2016 – Trump | 14 | 79 |
| Vote Cong. 2020 – GOP | 17 | 76 |
| Vote Cong. 2020 – DEM | 57 | 30 |
| Vote Cong. 2020 – UND | 18 | 44 |
| Republican | 17 | 75 |
| Democrat | 60 | 25 |
| Independent | 26 | 60 |
| Liberal | 63 | 27 |
| Moderate | 33 | 47 |
| Conservative | 13 | 80 |
| No College Degree | 33 | 52 |
| College Graduate | 38 | 53 |
| White | 28 | 62 |
| African- American | 58 | 21 |
| Hispanic | 49 | 37 |
| Under 55 | 37 | 48 |
| Over 55 | 33 | 60 |
| Married | 33 | 58 |
| Single | 37 | 47 |
| Men | 38 | 53 |
| Women | 33 | 52 |

Generic Ballot: U.S. Congress

Time Series



Generic Ballot: *U.S. Congress*



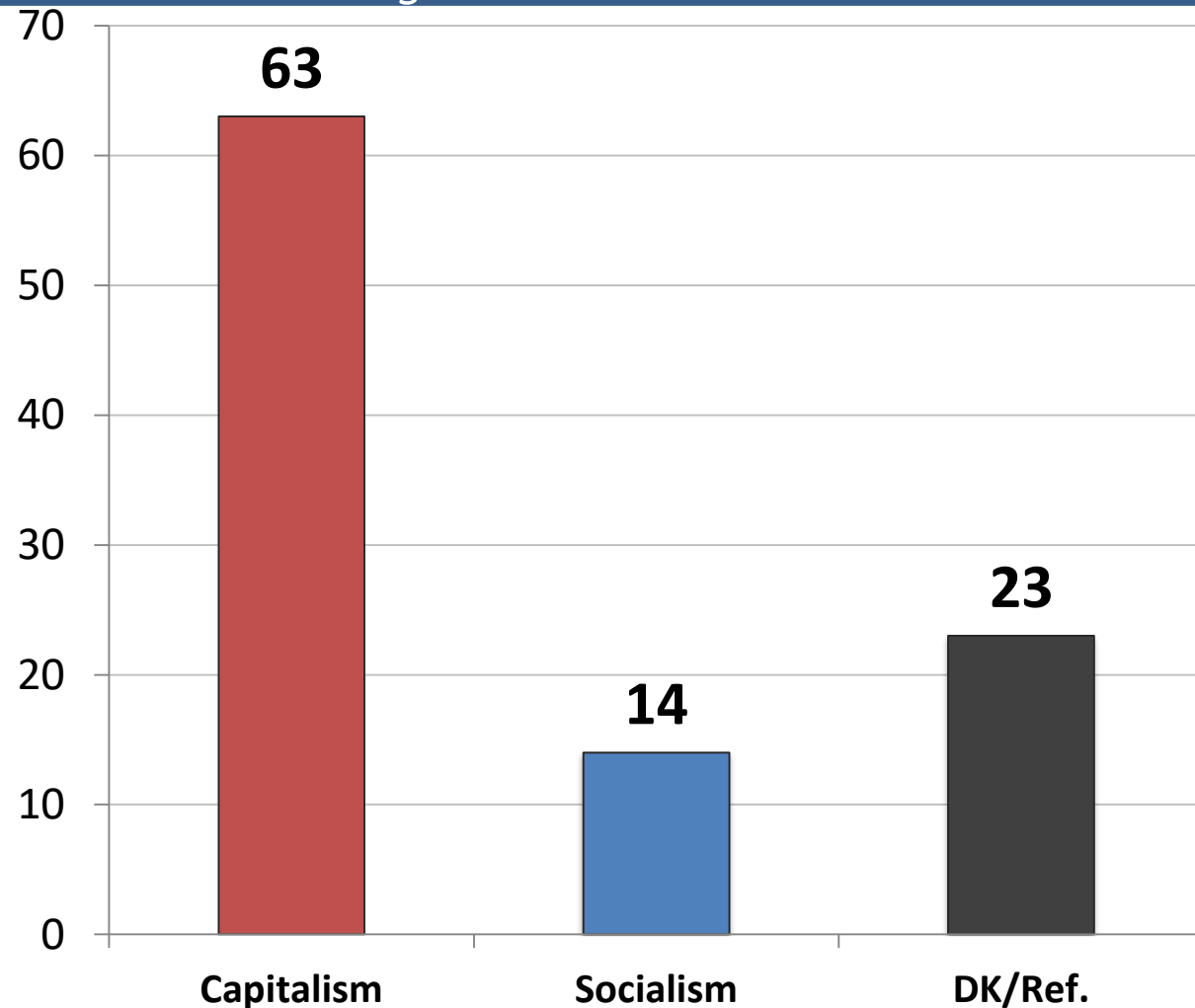
| | <u>GOP</u> | <u>DEM.</u> | <u>UND.</u> |
|---------------------------|------------|-------------|-------------|
| East | 39 | 50 | 12 |
| Midwest | 47 | 47 | 6 |
| South | 51 | 42 | 7 |
| West | 46 | 47 | 8 |
| Cont. Obama Pol. | 17 | 78 | 5 |
| Change Direction | 83 | 12 | 6 |
| Approve – Trump | 84 | 10 | 6 |
| Disapprove – Trump | 13 | 80 | 8 |
| Favorable – Trump | 87 | 9 | 4 |
| Unfavorable – Trump | 13 | 78 | 9 |
| Vote Pres. 2016 – Clinton | 9 | 86 | 5 |
| Vote Pres. 2016 – Trump | 88 | 8 | 5 |
| Vote Cong. 2020 – GOP | 100 | 0 | 0 |
| Vote Cong. 2020 – DEM | 0 | 100 | 0 |
| Vote Cong. 2020 – UND | 0 | 0 | 100 |
| Republican | 96 | 3 | 2 |
| Democrat | 6 | 92 | 2 |
| Independent | 41 | 37 | 22 |
| Liberal | 24 | 73 | 4 |
| Moderate | 32 | 53 | 15 |
| Conservative | 80 | 16 | 5 |
| No College Degree | 46 | 44 | 10 |
| College Graduate | 47 | 47 | 6 |
| White | 52 | 40 | 8 |
| African- American | 20 | 68 | 12 |
| Hispanic | 45 | 49 | 5 |
| Under 55 | 47 | 46 | 7 |
| Over 55 | 46 | 45 | 9 |
| Married | 54 | 39 | 8 |
| Single | 39 | 53 | 8 |
| Men | 51 | 43 | 6 |
| Women | 43 | 48 | 9 |

All things being equal, do you prefer:

1. *Free Market Capitalism*

or.

2. *Big Government Socialism*



| | <u>C</u> | <u>S</u> |
|---------------------------|----------|----------|
| East | 60 | 11 |
| Midwest | 65 | 13 |
| South | 63 | 13 |
| West | 65 | 17 |
| Cont. Obama Pols. | 53 | 22 |
| Change Direction | 79 | 6 |
| Approve – Trump | 79 | 6 |
| Disapprove – Trump | 50 | 20 |
| Favorable – Trump | 79 | 7 |
| Unfavorable– Trump | 51 | 20 |
| Vote Pres. 2016 – Clinton | 49 | 23 |
| Vote Pres. 2016 – Trump | 80 | 6 |
| Vote Cong. 2020 – GOP | 80 | 7 |
| Vote Cong. 2020 – DEM | 49 | 22 |
| Vote Cong. 2020 – UND | 41 | 3 |
| Republican | 79 | 7 |
| Democrat | 47 | 23 |
| Independent | 65 | 9 |
| Liberal | 49 | 29 |
| Moderate | 56 | 11 |
| Conservative | 82 | 2 |
| No College Degree | 58 | 14 |
| College Graduate | 68 | 13 |
| White | 66 | 12 |
| African- American | 48 | 18 |
| Hispanic | 63 | 15 |
| Under 55 | 61 | 17 |
| Over 55 | 67 | 9 |
| Married | 68 | 11 |
| Single | 61 | 18 |
| Men | 71 | 13 |
| Women | 56 | 14 |

Now, from the following list, which issue is personally most important to you?

| | 5/18 | 6/18 | 8/18 | 9/18 | 10/18 | 12/18 | 2/19 | 3/19 | 5/19 | 6/19 | Rep | Dem | Ind | Lib | Mod | Cons | App. DJT | Disapp DJT | Men | Wo-Men |
|------------------------------------|------|------|------|------|-------|-------|------|------|------|------|-----|-----|-----|-----|-----|------|----------|------------|-----|--------|
| ECONOMIC | 36 | 35 | 35 | 35 | 34 | 33 | 36 | 31 | 32 | 33 | 34 | 31 | 33 | 29 | 37 | 32 | 34 | 32 | 39 | 27 |
| Improving the Economy | 12 | 11 | 13 | 13 | 12 | 12 | 11 | 10 | 12 | 12 | 12 | 12 | 13 | 9 | 13 | 15 | 13 | 12 | 14 | 11 |
| Jobs/Unemployment | 9 | 9 | 8 | 8 | 7 | 7 | 8 | 7 | 7 | 8 | 7 | 11 | 5 | 9 | 8 | 6 | 7 | 8 | 8 | 8 |
| Wasteful Gov't Spending | 7 | 8 | 7 | 8 | 7 | 8 | 8 | 6 | 6 | 5 | 6 | 4 | 6 | 4 | 7 | 5 | 7 | 5 | 8 | 3 |
| Reduce Budget/Deficit | 5 | 6 | 5 | 5 | 5 | 4 | 6 | 5 | 5 | 5 | 6 | 2 | 5 | 3 | 6 | 5 | 5 | 4 | 6 | 3 |
| Hold Line/Taxes | 2 | 2 | 2 | 2 | 2 | 2 | 3 | 3 | 1 | 3 | 3 | 2 | 4 | 3 | 3 | 2 | 2 | 3 | 4 | 2 |
| SOCIAL | 27 | 30 | 27 | 28 | 30 | 28 | 27 | 30 | 28 | 28 | 18 | 39 | 25 | 40 | 28 | 16 | 16 | 39 | 24 | 31 |
| Reform Healthcare | 10 | 9 | 10 | 9 | 9 | 9 | 10 | 12 | 10 | 12 | 7 | 17 | 10 | 20 | 10 | 6 | 8 | 16 | 11 | 12 |
| Protect Medicare | 11 | 16 | 11 | 12 | 14 | 13 | 12 | 12 | 11 | 10 | 7 | 13 | 9 | 12 | 11 | 7 | 4 | 15 | 8 | 12 |
| Improving Education | 6 | 6 | 5 | 7 | 7 | 7 | 5 | 6 | 7 | 6 | 4 | 9 | 6 | 9 | 7 | 3 | 4 | 8 | 5 | 7 |
| SECURITY | 19 | 17 | 19 | 18 | 19 | 19 | 20 | 20 | 22 | 22 | 34 | 13 | 20 | 13 | 16 | 35 | 35 | 10 | 23 | 22 |
| Nat'l Sec./Terror | 9 | 8 | 7 | 9 | 7 | 6 | 8 | 9 | 9 | 10 | 16 | 6 | 9 | 5 | 7 | 17 | 17 | 4 | 10 | 10 |
| Fix Immigration | 7 | 6 | 9 | 7 | 8 | 10 | 9 | 9 | 11 | 9 | 16 | 3 | 9 | 5 | 6 | 15 | 15 | 4 | 11 | 8 |
| Defeat/Destroy ISIS | 4 | 3 | 3 | 2 | 3 | 3 | 2 | 2 | 3 | 3 | 3 | 3 | 3 | 3 | 3 | 3 | 4 | 2 | 3 | 3 |
| HONESTY/ INTEGRITY/D.C. | 16 | 15 | 17 | 16 | 14 | 16 | 15 | 17 | 15 | 15 | 12 | 16 | 18 | 16 | 15 | 15 | 14 | 17 | 14 | 17 |
| D.K./REFUSED | 2 | 3 | 3 | 4 | 3 | 4 | 3 | 2 | 2 | 2 | 1 | 2 | 4 | 2 | 4 | 2 | 2 | 2 | 1 | 3 |

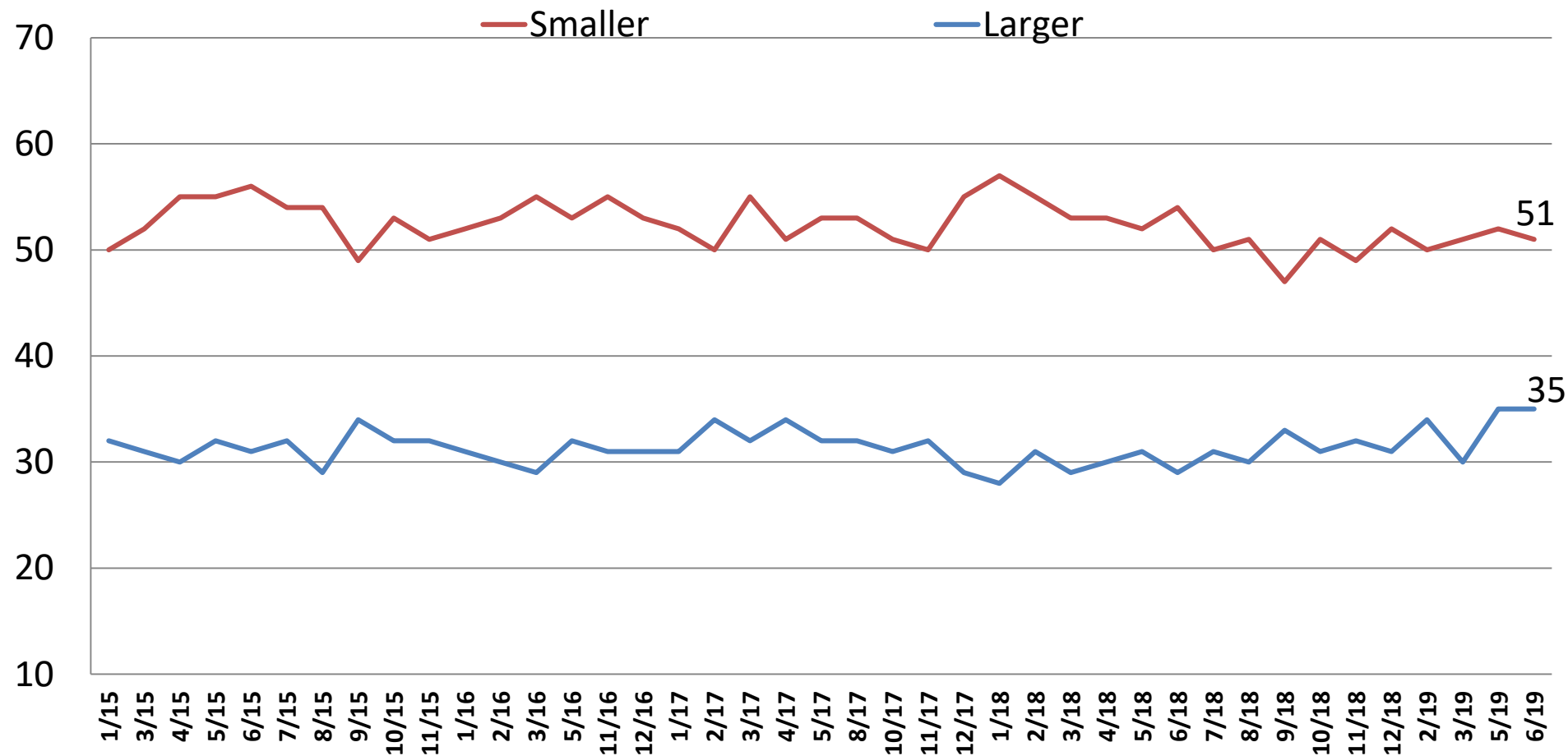
Current Opinion of the U.S. Economy

Time Series

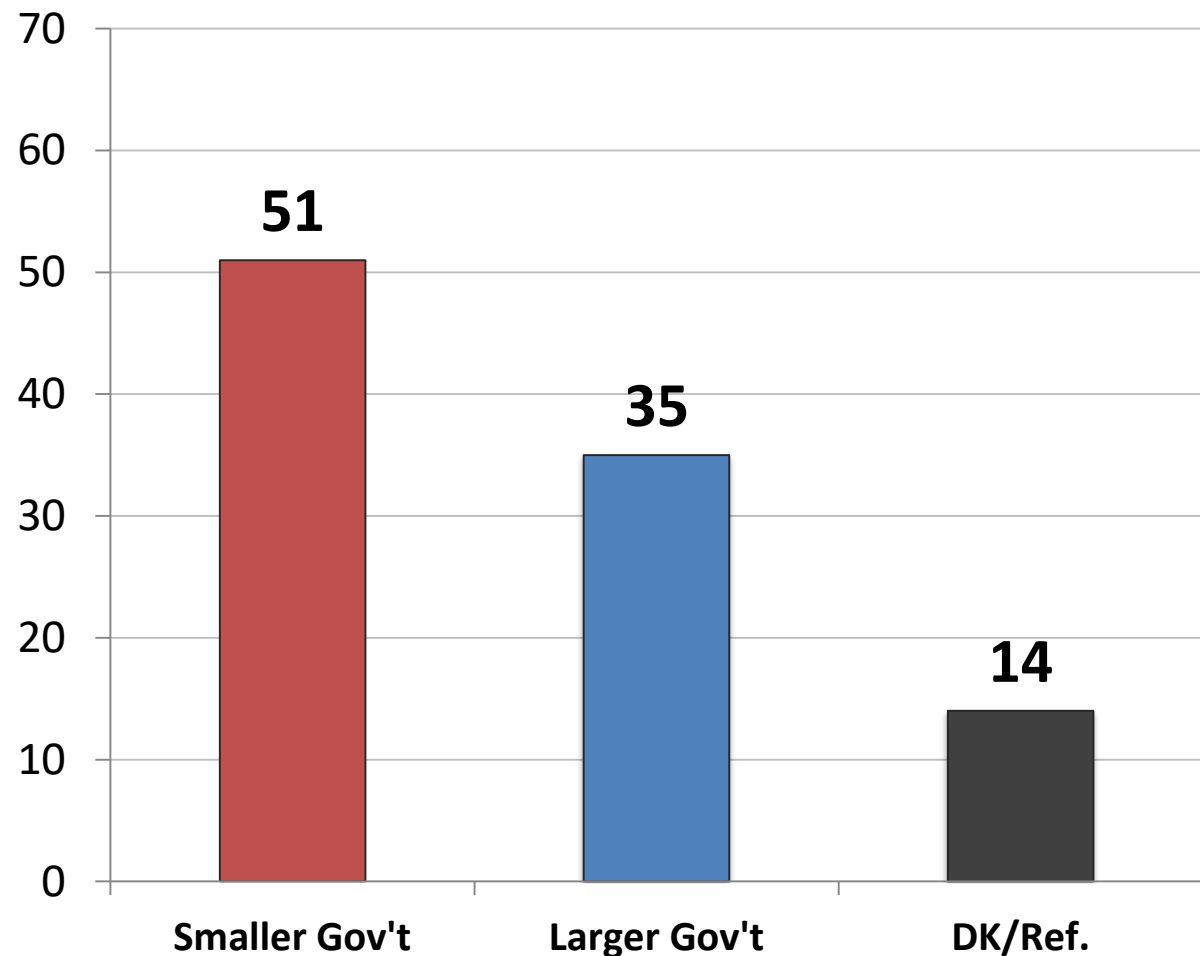
| | <u>2/19</u> | <u>3/19</u> | <u>5/19</u> | <u>6/19</u> | <u>Rep</u> | <u>Dem</u> | <u>Ind</u> | <u>Lib</u> | <u>Mod</u> | <u>Cons</u> | <u>App. DJT</u> | <u>Disapp. DJT</u> | <u>Men</u> | <u>Women</u> |
|-----------------------|-------------|-------------|-------------|-------------|-------------|--------------|------------|--------------|------------|-------------|---------------------|------------------------|-------------|--------------|
| NOT RECESSION | 68 | 70 | 67 | 66 | 82 | 55 | 60 | 57 | 60 | 78 | 79 | 54 | 73 | 59 |
| Getting Better | 39 | 40 | 42 | 40 | 69 | 20 | 33 | 24 | 28 | 66 | 66 | 17 | 46 | 35 |
| Getting Worse | 29 | 30 | 26 | 25 | 13 | 35 | 27 | 33 | 31 | 13 | 13 | 37 | 27 | 24 |
| RECESSION | 22 | 21 | 23 | 25 | 14 | 33 | 27 | 33 | 27 | 15 | 16 | 33 | 21 | 28 |
| Getting Better | 9 | 11 | 12 | 13 | 9 | 14 | 14 | 12 | 16 | 10 | 11 | 14 | 11 | 14 |
| Getting Worse | 13 | 11 | 11 | 12 | 5 | 18 | 13 | 21 | 11 | 5 | 5 | 19 | 10 | 14 |
| D.K./REFUSED | 10 | 9 | 10 | 10 | 4 | 13 | 13 | 10 | 13 | 7 | 5 | 13 | 7 | 13 |
| | | | | | | | | | | | | | | |
| | | | | | | | | | | | | | | |
| GETTING BETTER | 48 | 51 | 53 | 53 | 79 | 34 | 47 | 35 | 44 | 76 | 77 | 31 | 57 | 49 |
| GETTING WORSE | 42 | 40 | 37 | 37 | 18 | 53 | 40 | 55 | 42 | 18 | 18 | 56 | 37 | 38 |
| D.K./REFUSED | 10 | 9 | 10 | 10 | 4 | 13 | 13 | 10 | 13 | 7 | 5 | 13 | 7 | 13 |
| <i>Net Diff.</i> | <i>5</i> | <i>11</i> | <i>16</i> | <i>15.3</i> | <i>60.7</i> | <i>-19.1</i> | <i>6.8</i> | <i>-19.3</i> | <i>2</i> | <i>57.8</i> | <i>59</i> | <i>-25.3</i> | <i>19.7</i> | <i>11.3</i> |

Would you say you most favor a smaller government with fewer services or a larger government with many services?

Time Series

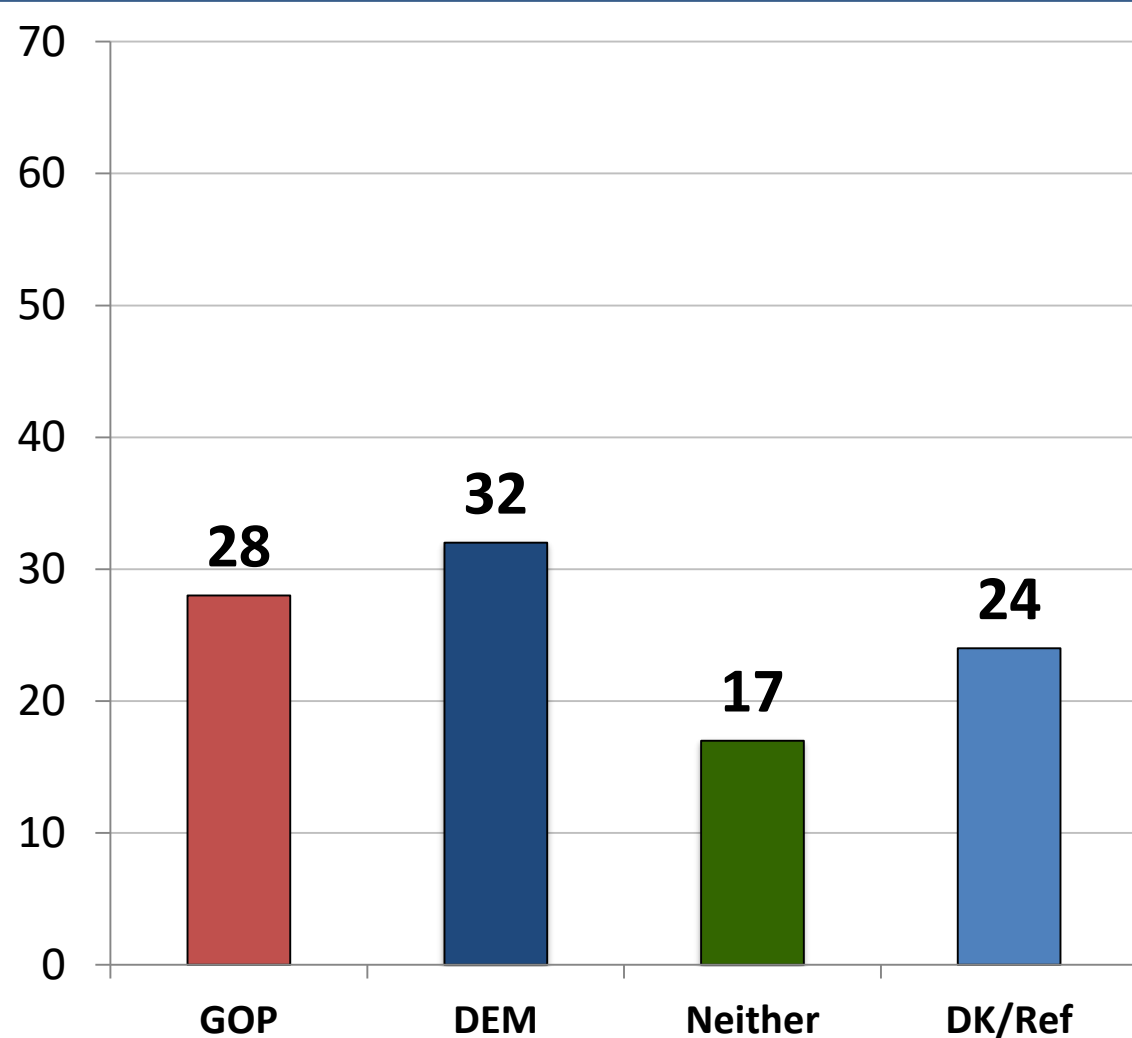


Would you say you most favor a smaller government with fewer services or a larger government with many services?



| | <u>Smaller</u> | <u>Larger</u> |
|---------------------------|----------------|---------------|
| East | 45 | 37 |
| Midwest | 55 | 29 |
| South | 52 | 35 |
| West | 49 | 42 |
| Cont. Obama Pols. | 35 | 52 |
| Change Direction | 71 | 17 |
| Approve – Trump | 69 | 20 |
| Disapprove – Trump | 34 | 51 |
| Favorable – Trump | 70 | 21 |
| Unfavorable – Trump | 35 | 49 |
| Vote Pres. 2016 – Clinton | 33 | 52 |
| Vote Pres. 2016 – Trump | 72 | 18 |
| Vote Cong. 2020 – GOP | 69 | 21 |
| Vote Cong. 2020 – DEM | 33 | 51 |
| Vote Cong. 2020 – UND | 44 | 29 |
| Republican | 68 | 21 |
| Democrat | 30 | 55 |
| Independent | 56 | 28 |
| Liberal | 34 | 55 |
| Moderate | 45 | 36 |
| Conservative | 70 | 17 |
| No College Degree | 50 | 34 |
| College Graduate | 51 | 37 |
| White | 54 | 32 |
| African- American | 37 | 47 |
| Hispanic | 46 | 45 |
| Under 55 | 47 | 39 |
| Over 55 | 56 | 30 |
| Married | 57 | 31 |
| Single | 45 | 40 |
| Men | 56 | 35 |
| Women | 46 | 36 |

Independents – Which party's primary are you more likely to vote?



| | <u>GOP</u> | <u>DEM</u> | <u>NTR</u> |
|---------------------------|------------|------------|------------|
| East | 21 | 27 | 21 |
| Midwest | 21 | 37 | 23 |
| South | 38 | 26 | 11 |
| West | 27 | 38 | 13 |
| Cont. Obama Pols. | 9 | 59 | 16 |
| Change Direction | 47 | 16 | 18 |
| Approve – Trump | 52 | 15 | 15 |
| Disapprove – Trump | 10 | 48 | 18 |
| Favorable – Trump | 54 | 14 | 16 |
| Unfavorable– Trump | 11 | 47 | 18 |
| Vote Pres. 2016 – Clinton | 10 | 55 | 18 |
| Vote Pres. 2016 – Trump | 51 | 16 | 11 |
| Vote Cong. 2020 – GOP | 56 | 16 | 14 |
| Vote Cong. 2020 – DEM | 6 | 65 | 18 |
| Vote Cong. 2020 – UND | 12 | 6 | 19 |
| Republican | 0 | 0 | 0 |
| Democrat | 0 | 0 | 0 |
| Independent | 28 | 32 | 17 |
| Liberal | 14 | 59 | 10 |
| Moderate | 18 | 32 | 20 |
| Conservative | 51 | 16 | 15 |
| No College Degree | 27 | 32 | 13 |
| College Graduate | 29 | 31 | 21 |
| White | 30 | 29 | 16 |
| African- American | 19 | 44 | 21 |
| Hispanic | 25 | 42 | 14 |
| Under 55 | 29 | 37 | 13 |
| Over 55 | 26 | 25 | 21 |
| Married | 30 | 30 | 14 |
| Single | 25 | 36 | 19 |
| Men | 29 | 28 | 21 |
| Women | 27 | 36 | 11 |

2020 Republican Primary for President

| | <u>11/18</u> | <u>12/18</u> | <u>2/19</u> | <u>3/19</u> | <u>5/19</u> | <u>6/19</u> | <u>E</u> | <u>MW</u> | <u>S</u> | <u>W</u> | <u>Rep</u> | <u>Dem</u> | <u>Ind</u> | <u>Lib</u> | <u>Mod</u> | <u>Cons</u> | <u>App. DJT</u> | <u>Disapp DJT</u> | <u>Men</u> | <u>Wo- men</u> | <u>White</u> | <u>AA</u> | <u>HISP</u> |
|--------------|--------------|--------------|-------------|-------------|-------------|-------------|-----------|-----------|-----------|-----------|------------|------------|------------|------------|------------|-------------|---------------------|-----------------------|------------|--------------------|--------------|-----------|-------------|
| Donald Trump | 79 | 72 | 72 | 80 | 77 | 79 | 76 | 83 | 82 | 71 | 83 | - | 87 | 75 | 63 | 86 | 91 | 6 | 81 | 78 | 82 | 55 | 72 |
| John Kasich | 4 | 5 | 6 | 5 | 5 | - | - | - | - | - | - | - | - | - | - | - | - | - | - | - | - | - | - |
| Bill Weld | - | - | - | 1 | 3 | 7 | 15 | 4 | 7 | 7 | 7 | - | 7 | 17 | 14 | 3 | 3 | 39 | 7 | 8 | 5 | 29 | 15 |
| Larry Hogan | - | - | - | - | 1 | - | - | - | - | - | - | - | - | - | - | - | - | - | - | - | - | - | - |
| Mitt Romney | 5 | 9 | 10 | - | - | - | - | - | - | - | - | - | - | - | - | - | - | - | - | - | - | - | - |
| Jeff Flake | 1 | 2 | - | - | - | - | - | - | - | - | - | - | - | - | - | - | - | - | - | - | - | - | - |
| Undecided | 11 | 12 | 11 | 14 | 14 | 13 | 9 | 13 | 11 | 22 | 10 | - | 26 | 8 | 24 | 11 | 7 | 55 | 12 | 15 | 13 | 16 | 13 |

2020 Democratic Primary for President

| | <u>11/18</u> | <u>12/18</u> | <u>2/19</u> | <u>3/19</u> | <u>5/19</u> | <u>6/19</u> | <u>E</u> | <u>MW</u> | <u>S</u> | <u>W</u> | <u>Rep</u> | <u>Dem</u> | <u>Ind</u> | <u>Lib</u> | <u>Mod</u> | <u>Cons</u> | <u>App. DJT</u> | <u>Disap DJT</u> | <u>Men</u> | <u>Women</u> | <u>White</u> | <u>AA</u> | <u>HISP</u> |
|------------------|--------------|--------------|-------------|-------------|-------------|-------------|-----------|-----------|-----------|-----------|------------|------------|------------|------------|------------|-------------|-----------------|------------------|------------|--------------|--------------|-----------|-------------|
| Joe Biden | 19 | 17 | 25 | 28 | 30 | 34 | 36 | 38 | 32 | 32 | 0 | 35 | 30 | 31 | 38 | 40 | 18 | 37 | 37 | 33 | 35 | 40 | 25 |
| Bernie Sanders | 16 | 18 | 16 | 17 | 19 | 17 | 18 | 18 | 13 | 21 | 0 | 16 | 19 | 19 | 15 | 13 | 10 | 18 | 17 | 17 | 17 | 14 | 20 |
| Elizabeth Warren | 4 | 4 | 5 | 5 | 7 | 11 | 7 | 13 | 12 | 12 | 0 | 12 | 9 | 13 | 10 | 6 | 9 | 11 | 11 | 11 | 14 | 7 | 5 |
| Kamala Harris | 5 | 3 | 8 | 8 | 7 | 6 | 3 | 8 | 7 | 7 | 0 | 6 | 9 | 7 | 4 | 6 | 11 | 5 | 6 | 6 | 5 | 10 | 9 |
| Pete Buttigieg | - | - | .1 | 3 | 4 | 6 | 3 | 10 | 7 | 3 | 0 | 5 | 8 | 7 | 5 | 3 | 8 | 5 | 3 | 7 | 7 | 1 | 9 |
| Beto O'Rourke | n/a | 11 | 6 | 8 | 5 | 4 | 2 | 1 | 7 | 2 | 0 | 4 | 3 | 4 | 3 | 3 | 1 | 4 | 3 | 4 | 3 | 5 | 4 |
| Cory Booker | 3 | 2 | 3 | 3 | 5 | 2 | 3 | 0 | 2 | 2 | 0 | 2 | 0 | 3 | 2 | 0 | 0 | 2 | 1 | 2 | 2 | 3 | 0 |
| Andrew Yang | - | - | .1 | 0 | 2 | 1 | 1 | 2 | 1 | 1 | 0 | 1 | 1 | 1 | 2 | 0 | 2 | 1 | 2 | 1 | 1 | 3 | 0 |
| Jay Inslee | - | - | .2 | 0.2 | .4 | 1 | 1 | 1 | 0 | 2 | 0 | 1 | 0 | 1 | 1 | 0 | 0 | 1 | 1 | 1 | 1 | 0 | 3 |
| Amy Klobuchar | N/A | 1 | 1 | 1 | 2 | 1 | 0 | 1 | 0 | 2 | 0 | 1 | 1 | 0 | 1 | 3 | 3 | .2 | 2 | 0 | .4 | 0 | 2 |
| Bill De Blasio | 0.3 | 0 | .2 | 0.3 | .2 | 1 | 3 | 0 | 0 | 0 | 0 | 1 | 1 | .4 | 1 | 0 | 1 | 1 | 0 | 1 | .3 | 1 | 1 |
| Wayne Messam | - | - | - | - | .3 | 1 | 0 | 0 | 1 | 2 | 0 | .4 | 1 | 1 | .4 | 0 | 4 | 0 | 1 | .4 | 0 | 1 | 2 |

2020 Democratic Primary for President Cont.

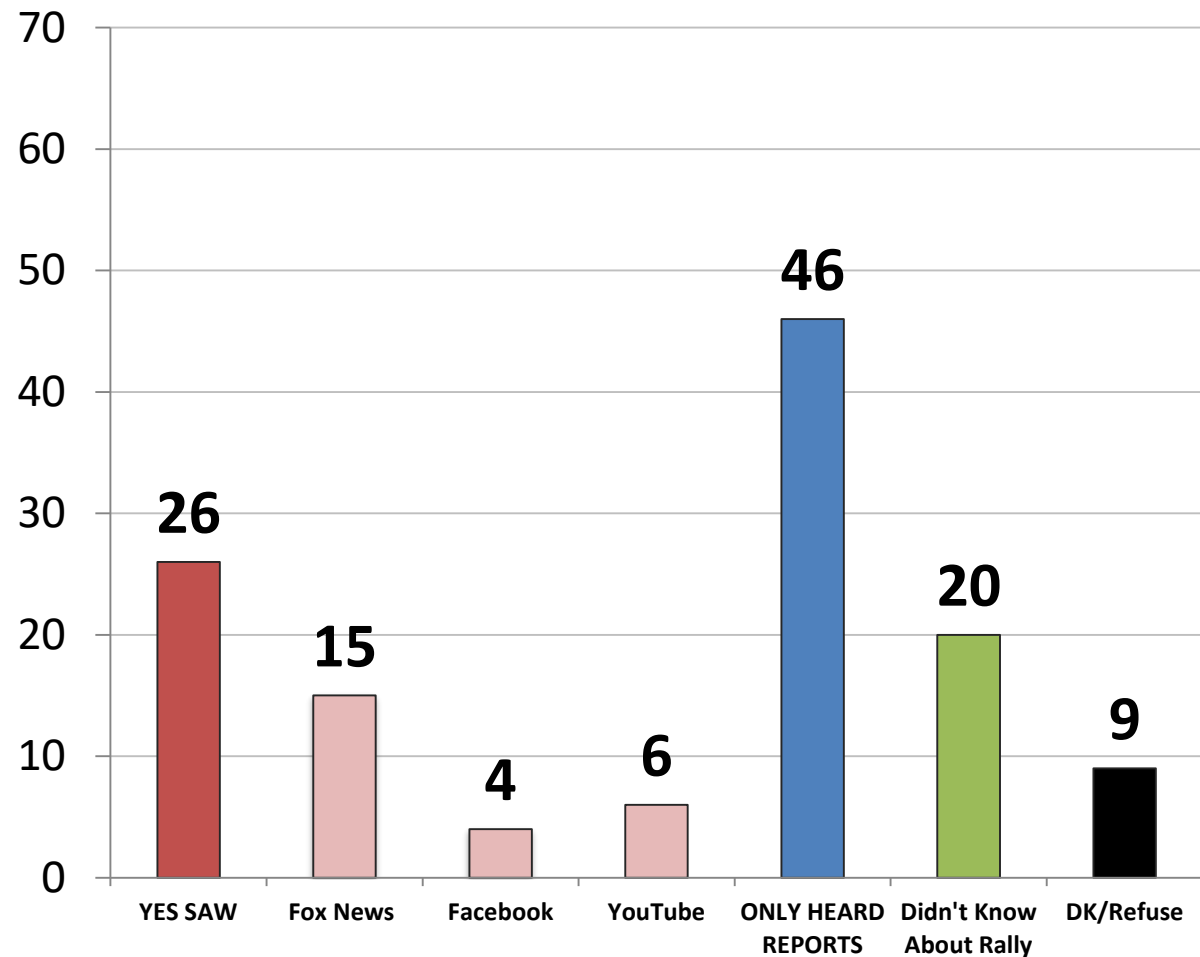
| | <u>11/18</u> | <u>12/18</u> | <u>2/19</u> | <u>3/19</u> | <u>5/19</u> | <u>6/19</u> | <u>E</u> | <u>MW</u> | <u>S</u> | <u>W</u> | <u>Rep</u> | <u>Dem</u> | <u>Ind</u> | <u>Lib</u> | <u>Mod</u> | <u>Cons</u> | <u>App. DJT</u> | <u>Disapp DJT</u> | <u>Men</u> | <u>Wo-men</u> | <u>Whit e</u> | <u>AA</u> | <u>HISP</u> |
|---------------------|--------------|--------------|-------------|-------------|-------------|-------------|----------|-----------|----------|----------|------------|------------|------------|------------|------------|-------------|-----------------|-------------------|------------|---------------|---------------|-----------|-------------|
| Tulsi Gabbard | - | - | .4 | - | .4 | 1 | 0 | 0 | 1 | 1 | 0 | 1 | 0 | 1 | 1 | 0 | 2 | .3 | 1 | .2 | 1 | 1 | 0 |
| Seth Moulton | - | - | - | - | 1 | 1 | 1 | 0 | 1 | 0 | 0 | 1 | 1 | 0 | 1 | 1 | 0 | 1 | 1 | 0 | 1 | 1 | 0 |
| Eric Swalwell | - | - | - | - | .2 | 1 | 0 | 1 | 1 | 0 | 0 | 0 | 2 | 1 | 0 | 0 | 0 | 1 | .4 | 1 | 0 | 2 | 0 |
| Steven Bullock | - | - | - | - | .2 | .4 | 1 | 0 | 1 | 0 | 0 | .2 | 1 | 0 | 1 | 0 | 0 | 1 | 1 | 0 | .3 | 0 | 2 |
| Julian Castro | - | - | 1 | 0 | 1 | .4 | 1 | 0 | 1 | 0 | 0 | 1 | 0 | .4 | 1 | 0 | 0 | 1 | 1 | 0 | .3 | 0 | 1 |
| John Hickenlooper | 1 | 1 | 1 | - | .4 | .4 | 0 | 0 | 0 | 2 | 0 | 1 | 0 | .3 | 0 | 2 | 3 | 0 | 1 | 0 | 0 | 0 | 3 |
| Tim Ryan | - | - | - | - | 1 | .3 | 1 | 0 | 1 | 0 | 0 | .4 | 0 | 1 | 0 | 0 | 2 | 0 | 1 | 0 | 0 | 0 | 2 |
| Marianne Williamson | - | - | - | - | - | .3 | 0 | 0 | .3 | 1 | 0 | .4 | 0 | .2 | 0 | 2 | 1 | .1 | .3 | .4 | .2 | 0 | 0 |
| Mike Gravel | - | - | - | - | 1 | .3 | 0 | 0 | 1 | 0 | 0 | .4 | 0 | .2 | 0 | 1 | 2 | 0 | .3 | .3 | 0 | 1 | 1 |
| John Delaney | - | - | .2 | 1 | .4 | .3 | 0 | 0 | 1 | 0 | 0 | .4 | 0 | .3 | .4 | 0 | 0 | .3 | .4 | .2 | .2 | 1 | 0 |
| Kirsten Gillibrand | 1 | 1 | 1 | 1 | 1 | .3 | 0 | 0 | 0 | 1 | 0 | 0 | 1 | 1 | 0 | 0 | 2 | 0 | 1 | 0 | .4 | 0 | 0 |
| Michael Bennet | - | - | - | - | 1 | .2 | 1 | 0 | .4 | 0 | 0 | .3 | 0 | .4 | 0 | 0 | 1 | .2 | 1 | 0 | .2 | 1 | 0 |
| Undecided | 16 | 11 | 15 | 16 | 13 | 12 | 18 | 7 | 13 | 10 | 0 | 12 | 13 | 9 | 14 | 21 | 21 | 10 | 9 | 14 | 12 | 10 | 12 |

2020 Democratic Primary for President Cont.

(Prior Candidates Asked)

| | <u>11/18</u> | <u>12/18</u> | <u>2/19</u> | <u>3/19</u> |
|-------------------|--------------|--------------|-------------|-------------|
| Hillary Clinton | 8 | 9 | 7 | 8 |
| Oprah Winfrey | 4 | 3 | 5 | - |
| Michael Bloomberg | 2 | 2 | 2 | - |
| Sherrod Brown | - | - | 1 | - |
| Andrew Cuomo | 1 | -- | 1 | 0 |
| Deval Patrick | 1 | 1 | 1 | - |
| Mark Zuckerberg | 1 | 0 | 1 | - |
| Eric Holder | 1 | 1 | .2 | - |
| Terry McAuliffe | - | - | .1 | .3 |
| Tim Kaine | 1 | 0 | 0 | - |
| Howard Schultz | 0.1 | 0 | - | - |
| Michael Avenatti | 0.4 | - | - | - |
| Michelle Obama | 17 | 16 | - | - |

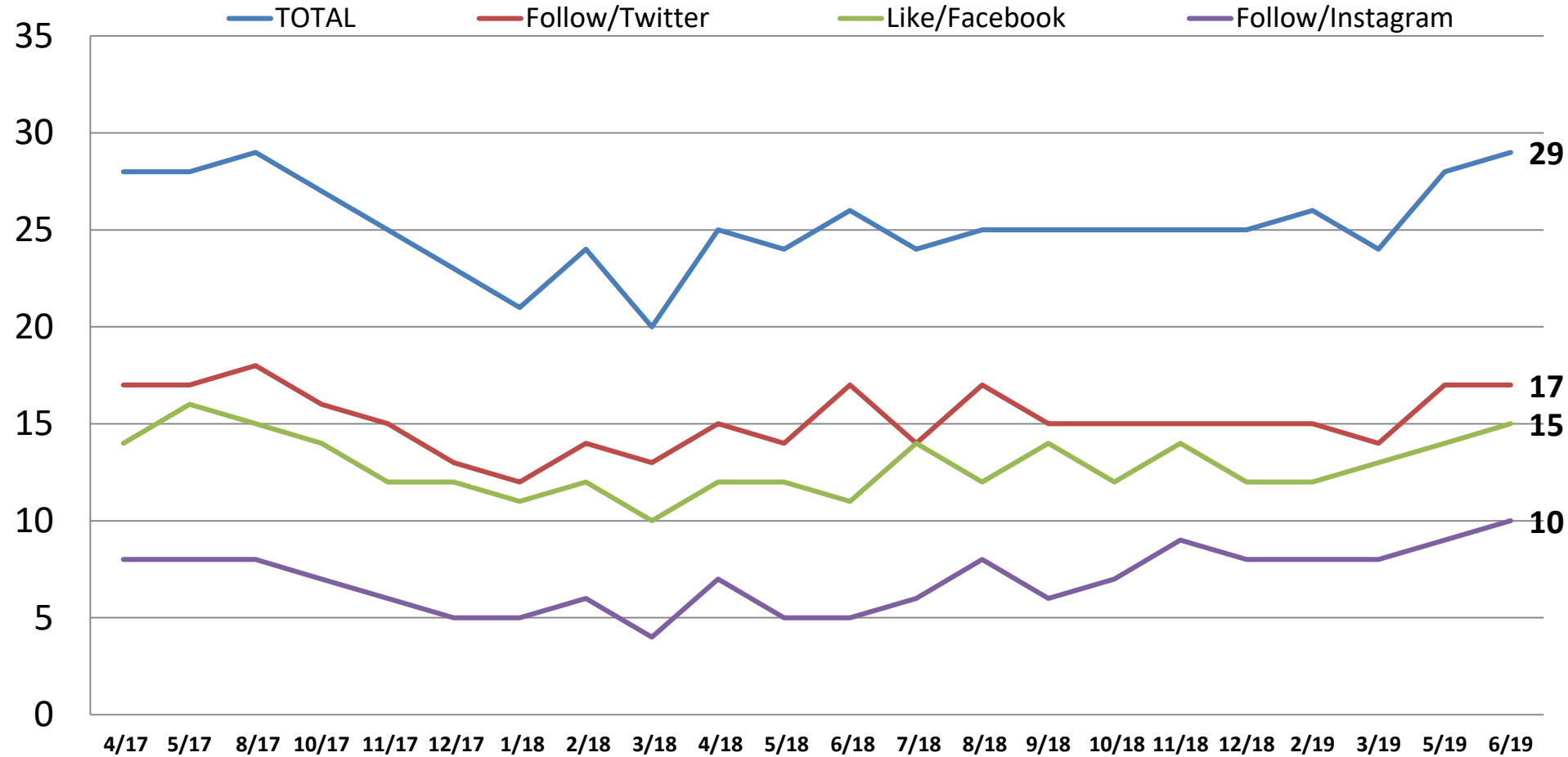
Did you watch the President's announcement speech Tuesday night at a rally in Orlando?



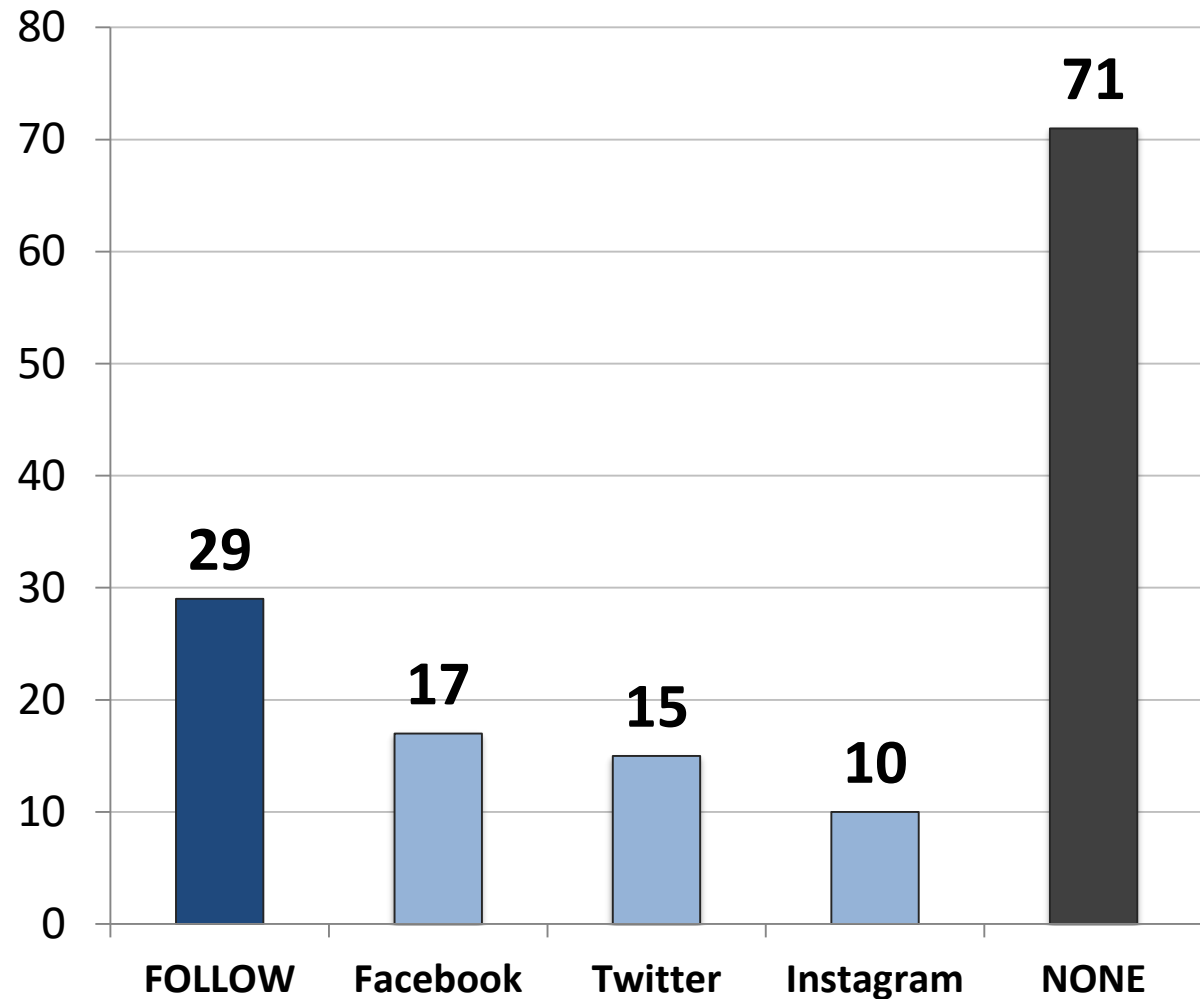
| | Yes Saw | Only News | Didn't Know |
|---------------------------|---------|-----------|-------------|
| East | 24 | 46 | 20 |
| Midwest | 21 | 48 | 23 |
| South | 29 | 45 | 17 |
| West | 25 | 45 | 23 |
| Cont. Obama Pols. | 23 | 46 | 21 |
| Change Direction | 31 | 47 | 18 |
| Approve – Trump | 40 | 39 | 17 |
| Disapprove – Trump | 13 | 53 | 23 |
| Favorable – Trump | 40 | 41 | 15 |
| Unfavorable– Trump | 14 | 51 | 24 |
| Vote Pres. 2016 – Clinton | 17 | 53 | 20 |
| Vote Pres. 2016 – Trump | 37 | 39 | 18 |
| Vote Cong. 2020 – GOP | 39 | 42 | 15 |
| Vote Cong. 2020 – DEM | 14 | 51 | 24 |
| Vote Cong. 2020 – UND | 17 | 36 | 31 |
| Republican | 45 | 38 | 13 |
| Democrat | 18 | 49 | 22 |
| Independent | 14 | 50 | 25 |
| Liberal | 28 | 46 | 18 |
| Moderate | 20 | 43 | 24 |
| Conservative | 29 | 48 | 19 |
| No College Degree | 24 | 44 | 22 |
| College Graduate | 27 | 48 | 18 |
| White | 22 | 51 | 20 |
| African- American | 20 | 39 | 24 |
| Hispanic | 48 | 26 | 19 |
| Under 55 | 31 | 35 | 25 |
| Over 55 | 18 | 61 | 14 |
| Married | 29 | 49 | 16 |
| Single | 23 | 39 | 27 |
| Men | 31 | 45 | 16 |
| Women | 20 | 47 | 25 |

Do you follow Donald Trump on Twitter, Instagram and/or have you like his page on Facebook, meaning his posts show up on your newsfeed?

- Time Series -



Do you follow Donald Trump on Twitter, Instagram and/or have you like his page on Facebook, meaning his posts show up on your newsfeed?



| | Follow | None |
|---------------------------|--------|------|
| East | 23 | 77 |
| Midwest | 28 | 72 |
| South | 29 | 71 |
| West | 34 | 66 |
| Cont. Obama Pol. | 24 | 76 |
| Change Direction | 38 | 62 |
| Approve – Trump | 47 | 53 |
| Disapprove – Trump | 13 | 87 |
| Favorable – Trump | 47 | 53 |
| Unfavorable – Trump | 13 | 87 |
| Vote Pres. 2016 – Clinton | 18 | 82 |
| Vote Pres. 2016 – Trump | 44 | 56 |
| Vote Cong. 2020 – GOP | 45 | 55 |
| Vote Cong. 2020 – DEM | 15 | 85 |
| Vote Cong. 2020 – UND | 15 | 85 |
| Republican | 51 | 50 |
| Democrat | 19 | 81 |
| Independent | 18 | 82 |
| Liberal | 31 | 70 |
| Moderate | 21 | 79 |
| Conservative | 34 | 66 |
| No College Degree | 27 | 73 |
| College Graduate | 31 | 69 |
| White | 27 | 73 |
| African- American | 20 | 80 |
| Hispanic | 50 | 50 |
| Under 55 | 35 | 65 |
| Over 55 | 19 | 81 |
| Married | 30 | 70 |
| Single | 29 | 71 |
| Men | 34 | 66 |
| Women | 25 | 75 |

From the following list, which social media networks do you use?

| | <u>Total</u> | <u>Rep</u> | <u>Dem</u> | <u>Ind</u> | <u>Lib</u> | <u>Mod</u> | <u>Cons</u> | <u>App. DJT</u> | <u>Disapp. DJT</u> | <u>Under 55</u> | <u>Over 55</u> | <u>Men</u> | <u>Wo- men</u> |
|-----------|--------------|------------|------------|------------|------------|------------|-------------|---------------------|------------------------|---------------------|----------------|------------|--------------------|
| Facebook | 75 | 77 | 73 | 75 | 74 | 72 | 78 | 78 | 73 | 75 | 75 | 70 | 80 |
| YouTube | 59 | 58 | 62 | 56 | 62 | 56 | 58 | 57 | 61 | 65 | 49 | 60 | 58 |
| Instagram | 40 | 40 | 46 | 34 | 48 | 43 | 32 | 36 | 44 | 55 | 18 | 35 | 45 |
| Twitter | 35 | 29 | 42 | 32 | 41 | 33 | 30 | 30 | 39 | 43 | 21 | 37 | 32 |
| Pinterest | 32 | 34 | 33 | 29 | 31 | 33 | 33 | 32 | 33 | 35 | 29 | 17 | 46 |
| Linked-In | 25 | 25 | 28 | 24 | 32 | 21 | 24 | 25 | 27 | 29 | 20 | 28 | 23 |
| Snapchat | 22 | 21 | 27 | 17 | 30 | 22 | 15 | 18 | 25 | 33 | 5 | 20 | 24 |
| WhatsApp | 12 | 14 | 13 | 7 | 16 | 10 | 10 | 13 | 10 | 16 | 6 | 14 | 10 |
| Reddit | 11 | 7 | 12 | 12 | 13 | 10 | 8 | 8 | 13 | 15 | 4 | 11 | 10 |
| Tumblr | 8 | 6 | 10 | 9 | 14 | 8 | 4 | 7 | 9 | 12 | 2 | 8 | 8 |
| Periscope | 2 | 2 | 3 | 2 | 3 | 2 | 2 | 3 | 2 | 4 | 0 | 2 | 3 |
| Other | 2 | 3 | 1 | 3 | 1 | 3 | 3 | 2 | 2 | 2 | 3 | 4 | 1 |
| None | 8 | 5 | 7 | 11 | 5 | 10 | 8 | 5 | 10 | 5 | 12 | 11 | 5 |

2020 Likely General Election Voter Profile

n= 1,000

| <u>Party</u> | <u>Total</u> | <u>Age</u> | <u>Total</u> | <u>Region</u> | <u>TOTAL</u> |
|-------------------------------|--------------|----------------------|--------------|--------------------|--------------|
| Republican | 33 | 18-29 | 18 | East | 18 |
| Democrat | 36 | 30-40 | 19 | Midwest | 24 |
| Independent | 31 | 41-55 | 23 | South | 37 |
| <u>Ideology</u> | | 56-65 | 20 | West | 21 |
| Liberal | 32 | Over 65 | 19 | <u>Area</u> | |
| Moderate | 32 | <u>Race</u> | | Urban | 29 |
| Conservative | 36 | White | 71 | Suburban | 46 |
| <u>Voting Behavior</u> | | African American | 12 | Rural | 25 |
| Definitely | 83 | Hispanic | 12 | | |
| Very likely | 13 | Asian | 4 | | |
| Somewhat Likely | 4 | <u>Gender</u> | | | |
| | | Male | 47 | | |
| | | Female | 53 | | |



McLaughlin & Associates

New York Office

566 South Route 303

Blauvelt, NY 10913

845-365-2000

D.C./Virginia Office

919 Prince Street

Alexandria, VA 22314

703-518-4445

www.mclaughlinonline.com