

WOMEN MAKING A DIFFERENCE

2015



PRESENTING SPONSORS:



PLATINUM SPONSORS:



GOLD SPONSORS:

AmericanWest Bank
An Empowered Woman
California Hospital Medical Center
Children's Hospital Los Angeles
City of Glendale Economic Development Corporation

Cushman & Wakefield, Inc.
DineEquity
LADWP
Pepperdine University, Graziadio School of Business and Management
Phillips Graduate Institute

ProVisors
The Queen Mary
Torrey Pines Bank
University of Phoenix
US Bank

Women Making a Difference 2015

The Los Angeles Business Journal Celebrates L.A.'s Inspirational Women Business Leaders

THE Los Angeles Business Journal held the 2015 Women Making a Difference Awards Reception and Luncheon event at the J.W. Marriott Los Angeles Hotel on Monday, May 4th.

Described by attendees as an uplifting and inspirational event, the celebration honored Los Angeles based women who "lead by example," successfully blending effective business vision with a passionate commitment to positively "making a difference," both in the world of business and in the communities they serve.

Building off of the success and popularity of the Women Making a Difference Awards held for the past 22 years, this year marked the second year in a row that the Business Journal also presented a half-day symposium in conjunction with the awards. The event began with breakfast and progressed through a series of nine guest speakers. Attendees had an opportunity to be inspired by local women executives sharing their expertise on Work / Life Balance, How I Made It, Leadership, Lessons Learned and World Impact. The afternoon portion of the event was highlighted by the Women Making a Difference Awards luncheon, where the Business Journal honored the outstanding achievements in business by women throughout Los Angeles County.

More than 250 prestigious nominees were submitted to the judges by Los Angeles Business Journal readers this year. So the judges had the unenviable task of narrowing the field down to six honorees for this year's big event. Categories presented included Business Owner/CEO of the Year, Executive of the Year, Rising Star of the Year, Volunteer of the Year, Philanthropist of the Year, and Corporate Advocate of the Year.

It wasn't easy to select just six honorees for this year's awards, so we have also taken the time to single out, for honorable mention, an incredible selection of 24 finalists – all superb examples of women who genuinely make a difference in their own right. Each is also profiled in these pages.

Congratulations to all the honorees, finalists and nominees!



Business Journal Publisher Matt Toledo honored the women who 'lead by example.'

Human connection decreases blood pressure.

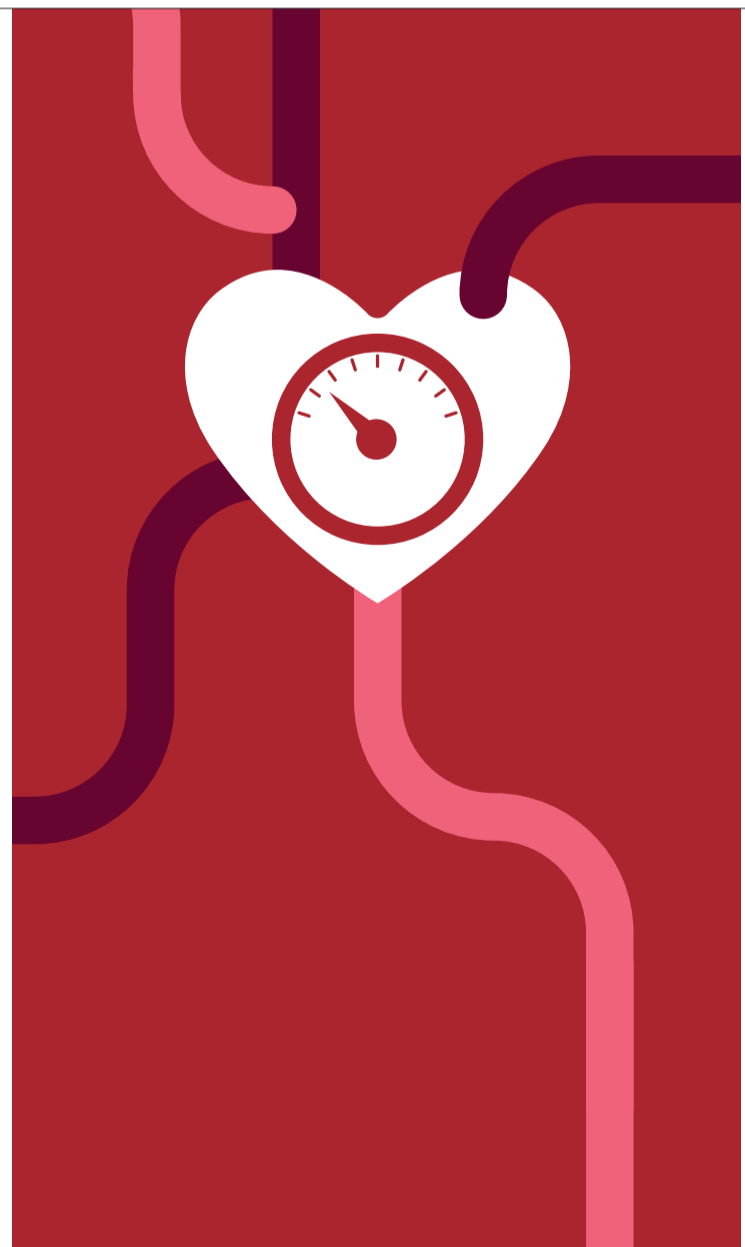
Science tells us that when you feel you're being treated with respect in your health care, your blood pressure stays lower. That's the power of humankindness. Learn more at dignityhealth.org.

Hello humankindness™



Dignity Health™
California Hospital
Medical Center

1401 S. Grand Avenue • Downtown Los Angeles • (888) 742-2462 • chmcla.org





We move businesses with unique
BACKGROUNDS
FORWARD.

California Bank & Trust is dedicated to helping business owners, executives, entrepreneurs, and women and minority-owned businesses get the tools they need to succeed.

To see how we're helping businesses like yours move forward, visit www.calbanktrust.com/team

To learn what California Bank & Trust can do for your business, visit calbanktrust.com or call 1-800-CALIFORNIA to speak with an expert banker.



CALIFORNIA BANK
TRUST

Member FDIC | SBA Preferred Lender

© 2015 California Bank & Trust. All rights reserved.

calbanktrust.com

Thank You to Our Symposium Speakers

THIS year, the Los Angeles Business Journal hosted a morning symposium preceding the Women Making a Difference Awards luncheon. More than 700 business leaders attended the breakfast symposium and heard from nine exceptional speakers presenting their stories of business success and life journeys. The afternoon awards luncheon was attended by more than 1,000 business leaders. We'd like to thank each of our speakers for kicking off a day of education, inspiration and recognition.



GINA MCLEOD
Partner, Deloitte
Board Member, Girl Scouts

GINA is a Principal with Deloitte Tax in Los Angeles. She serves both public and private consumer business and media & entertainment clients, consulting on a broad spectrum of tax issues. She founded the United Way of Greater LA Emerging Leaders Council, and is on the Board of Directors for Girl Scouts of Greater LA. Gina has a Bachelor of Arts degree from the University of California San Diego, a Juris Doctor degree from Loyola Law School, and an LLM in Tax from Golden Gate University School of Law. She is a licensed attorney in the state of CA.



MICHELLE PATTERSON
President & Chief Executive Officer, Women Network LLC

Ms. Patterson is the CEO of Women Network LLC, a media and production company giving women a voice to share their message. She is also the founder of Global Women Foundation, a non-profit public charity created to bring women together to create global change by empowering them to transform their communities. Michelle is a successful event promoter; Regional VP and National Sales Trainer for Robert Half; a sought-after media commentator of TV and radio stations; and an energetic and engaging public speaker. She is also the headlining author for a women's anthology, *Women Change the World*, as well as five other books.



TONI KO
Founder and Previous Chairwoman, NYX Cosmetics
Chief Executive Officer, Butter Ventures

TONI KO is the founder of the multi-million dollar cosmetics brand NYX, which was recently acquired by the largest beauty company in the world, L'Oreal. Ko started the Toni Ko Foundation, where she will lend support to organizations that help children in need and those that empower women. Ko found that the majority of top executives are men. Therefore, she wants to empower women to have the courage to start their own businesses, and set higher goals to be the executives.



BERNICE LEDBETTER, EDD
Practitioner Faculty of Organizational Theory and Management, Pepperdine University Graziadio School of Business and Management

Dr. Bernice Ledbetter is Practitioner Faculty in Organizational Theory & Management at Pepperdine University Graziadio School of Business and Management. A recipient of the University's highest award for teaching excellence, her research and teaching interests focus on leadership and values, especially women in leadership. She is a Principal in Ledbetter Consulting Group and has worked extensively as a career management consultant and team performance coach for individuals and major organizations like TRW.



DESIREE DOUBROX
Founder, An Empowered Woman

DESIREE is the founder of An Empowered Women Inc., which offers, coaching, MasterMinds, seminars and awesome live events. As a result of her worldwide affiliations the community has grown to almost 53,000 in 11 different countries. She is rebranding the Empowered List and designing it to be the largest online directory of women professionals and entrepreneurs. To take the message even further Desiree hosts web TV and radio shows. She is the author of "Thoughts of An Empowered Woman," and is in the process of writing "Lead Like a Lady" and Let's Talk Success.



LIZANNE FALSETTO
Founder, thinkThin, LLC
Chief Executive Officer, Think like a Woman, LLC

IN 2000, after a decade of world travel and successful career modeling internationally, Lizanne launched thinkThin. As the Founder and CEO of thinkThin, she steered her company to become a national brand to its place today as a multi-million dollar, household name. Lizanne has been widely featured in newspapers, magazines, on television and on radio. She hosts a nationally syndicated Sirius Radio series, "Female Rock Star Entrepreneurs". Lizanne devotes her time to her Foundation, her book, speaking and the creation of the #thinkKindness campaign. She is devoted to teaching young entrepreneurs—women and men—how to nurture and trust that inner voice to make bold decisions that count.



MARISA HAMAMOTO
Founder, Sexy Salsa Ballroom
Founder & Artistic Director, Infinite Flow – A Wheelchair Dance Company

IN 2006, Marisa suffered a severe neurological disease that left her paralyzed from the neck down. Bed bound and unable to move her legs or arms, she was told by her doctor that she might never walk again. Throughout her healing journey, she has risen, from paralysis to professional ballroom dancer. Her company has provided high quality dance instructions to over 1200 residents. In addition to running her company, Marisa recently founded another Dance Company in January of this year. Its mission is to bring the power of dance and performance to individuals with physical challenges.



CYNTHIA KERSEY
Founder & Chief Executive Officer, Unstoppable Foundation

CYNTHIA is a two time best-selling author and the Founder and CEO of the LA based Unstoppable Foundation, a nonprofit organization she founded in 2008 with the mission of ensuring that the world's most vulnerable children get access to education. She purposed to inspire people to live unstoppable lives by writing her first book, "Unstoppable." She wrote her second book, "Unstoppable Women" in 2005 and spoke to tens of thousands of people yearly and coached individuals and organizations on how to become unstoppable in their personal and professional lives.



PAULA SCHNEIDER
Chief Executive Officer, American Apparel

PAULA Schneider, CEO of American Apparel, Inc. since 2014. She is a senior executive with extensive worldwide experience, diversified product expertise, and demonstrated success for global brand expansion. Paula has a proven track record in improving operational efficiencies, creating inspirational product offerings, creating and executing brand strategies and increasing EBITDA. She has served as president or senior officer of a number of retail and apparel companies, including Big Strike, Inc, Warnaco, Gores Group, BCBG Max Azria, and Laundry by Shelli Segal. Paula belongs to the Women's Association of Venture and Equity, and has served on the corporate board of directors at J Mendel and Big Strike.



“The tools in the Business Plan Center are golden for anyone who’s looking to grow their business.”

Carolyn Miye
Oodles 4 Kids, est. 2012
Portland, Oregon

Our complimentary Business Plan Tool can help you focus on the things that will make your business thrive.

Like most small business owners, Carolyn Miye* was so busy running her business that she found it hard to organize ideas for her company’s future into a business plan. Using the Business Plan Tool from Wells Fargo, she gained valuable insight to help her focus on what to do next. It’s just one of the complimentary resources in the new Business Plan Center. **To learn more, visit WellsFargoWorks.com.**

Wells Fargo Works
for Small Business

Together we’ll go far



*Wells Fargo rewarded Carolyn Miye \$10,000 to help with her marketing plans.

© 2015 Wells Fargo Bank, N.A. All rights reserved. Member FDIC. (1253126_14991)

WOMEN MAKING A DIFFERENCE 2015 SYMPOSIUM



Over 700 attendees were on hand at the symposium, held at the Platinum Ballroom in the J.W. Marriott Hotel at LA Live in Los Angeles on May 4th.





Bowlero
MAR VISTA

IT'S MORE THAN
JUST A PARTY.
**IT'S THE STUFF
OF OFFICE LEGEND.**

YOUR CORPORATE PARTY HAS A NEW PLACE TO ROLL.

INTRODUCING BOWLERO MAR VISTA

Custom party packages, inventive culinary creations, and stunning retro-modern design for **strikingly different** corporate events.

CALL TO GET YOUR PARTY ROLLING!

(310) 391-5288

12125 VENICE BLVD • LOS ANGELES • BOWLERO.COM

WOMEN MAKING A DIFFERENCE 2015 HONOREES

• Business Owner or CEO of the Year



JULIA STEWART
 Chief Executive Officer and Chairman
 DineEquity
 Glendale

JULIA Stewart is a nearly 40-year veteran of the restaurant industry and today serves as chairman and chief executive officer of DineEquity, Inc., one of the world's largest full-service restaurant companies. Over the past 15 years – as the longest tenured CEO in the full-service restaurant category - Stewart has rebuilt the IHOP brand and firmly established the iconic chain as the undisputed leaders in the family dining category. In 2007, she led the \$2.3 billion acquisition of Applebee's, the world's largest casual dining chain, and formed DineEquity. Since that time, Stewart led the refranchising of the Applebee's brand, significant physical and menu transformation and positioned DineEquity as the only restaurant operator with two brands ranking number one in their respective categories.

After a stellar 2014, DineEquity and its brands, under Stewart's leadership, are well positioned to continue outstanding performance in 2015, including a robust international pipeline, which will see IHOP and Applebee's expand their presence as global brands.

In addition to leading this multi-billion dollar company, Stewart believes in supporting her industry and her community. She is a founding member of the Women's Foodservice Forum (WFF), a vital industry organization dedicated to the development and advancement of women. In 2006, she was appointed to the board of the Children's Bureau of Southern California, and currently serves as its Chair. She also founded and continues to chair the Celebrity Chefs & Wine Tasting annual event that has become a staple on the Los Angeles social and philanthropic calendar. The event has raised \$1.5 million in its five-year history, providing significant funds to support the Children's Bureau.



Ease of Doing Business



FIFTEEN REASONS TO LOCATE IN GLENDALE

- 10-minutes close to Downtown L.A., Burbank Airport, Pasadena, Hollywood, and the Valley
- Easy access to the westside and 134, 5, 210, 2, 110, and 101 freeways
- Hundreds of restaurants in every ethnic cuisine imaginable for every budget and lifestyle
- Safe, walkable streets
- Multitude of housing options for every budget from posh hillside homes to affordable multi-family complexes. New condos and apartments designed for urban professionals
- Easy transit access to MTA, Glendale Beeline, and Metrolink
- After work and weekend entertainment options. Live music and performance art venues. Jazz clubs, sports bars, night clubs, and movie theatres
- Upscale business amenities including state-of-the-art printers and animators, videographers, web designers, production companies, conference facilities, and hotels
- Major industry clusters including corporate headquarters, medical, retail, automotive, creative industry, and manufacturing
- Access to labor pools for all industries
- On-trend gyms, martial arts studios, dance studios, yoga and pilates studios, and outdoor recreation areas
- Four major shopping centers with a range of destination retail including Bloomingdale's, Nordstrom, Macy's, J.C. Penney, Sears, and Target, and a range of fashion discount stores
- Beautiful public spaces, pristine parks, well-maintained streets, and clean public parking lots
- Full service city with a Class 1 Fire Department rating for lowered insurance rates. Dedicated Police services and municipal owned utility company
- No gross receipts tax. No business license tax

Call us at: **Glendale Economic Development Corporation**
 633 E Broadway, Glendale CA 91206 | 818-548-2005

www.glendaleca.gov

@MyGlendale
 @GlendaleBiz



I expect my bank to:
**Grow my business,
 not their commission.**

Some businesses reach a certain point when they expect more than just a loan. They expect their bank to be part of their growth strategy.

When it's time, come to Comerica. And discover why we're the leading bank for business,* with more awards for excellence** than any other bank.

RAISE YOUR EXPECTATIONS.



Business ■ Wealth Management ■ Personal

comerica.com

MEMBER FDIC. EQUAL OPPORTUNITY LENDER.

*Based on commercial and industrial loans as a percentage of total assets. Data provided by Thomson Reuters Bank Insight, June 2013. **Greenwich Associates is a leading worldwide strategic consulting and research firm specializing in financial services. For Middle Market, the Greenwich Awards are based on nearly 14,000 market research interviews with U.S. companies with sales revenues of \$10 million-\$500 million, and honorees were recognized by their customers as providing superior quality of products, service and coverage. Of more than 750 U.S. banks evaluated, Comerica ranked within the top 5 percent of banks with "distinctive quality" and "performing at a differentiated level relative to peers." For Small Business, the Greenwich Awards are based on more than 17,000 market research interviews with U.S. companies with annual revenues of \$1 million-\$10 million, and honorees were recognized by their customers as providing superior quality of products, service and coverage. Of more than 750 U.S. banks evaluated, Comerica ranked within the top 6 percent of small business banks with "distinctive quality" and "performing at a differentiated level relative to peers."

WOMEN MAKING A DIFFERENCE 2015 FINALISTS

• Business Owner or CEO of the Year



TAMIE ADAYA
President & Chief Executive Officer
Hotel Shangri-la at The Ocean Santa Monica

TAMIE Adaya brings a wealth of insight, unparalleled creativity and social perspective to her position as CEO of Hotel Shangri-la. A true entrepreneur and student of pop-culture, art, history, and politics, she established the indie music record label So Sweet Records in 2005. She also owns and operates the Santa Monica based artist collective Crown Jewels while simultaneously posting to the travel vertical as a Huffington Post blogger.

Long a family treasure, Adaya recently re-branded and remodeled Hotel Shangri-la to her exacting standards, which are a reflection of her palate—featuring clean, crisp lines, modern lifestyle amenities with a classic flair, an unprecedented attention to detail with a whimsical unpredictability that makes each visit a discovery in self-expression, escapism and pure enjoyment.

As the Hotel Shangri-la celebrates its 75th anniversary this year, Adaya has published a limited-edition diamond anniversary book that chronicles a rich history dating back three-quarters of a century. In the 1940s, the hotel lured actors such as Mae West and Jane Wyman, the future wife of President Ronald Reagan, to its beauty and solitude. It was also where a close confidant of President Franklin D. Roosevelt's helped conceive the idea of today's modern Navy Seal program just prior to U.S. involvement in World War II. During the war, the Shangri-la also provided battle-weary U.S. combat veterans a safe haven where they could rest and relax for 15-day periods before entering civilian life. These are just a few of the highlights that Adaya shares with guests, staff and visitors to the hotel.



LING CAO
Principle Consultant, Project Manager
Fulcrum Resources Environmental Duarte

LING Cao was instrumental in creating her co-owned business of Fulcrum Resources Environmental. Her background in science and biology helped point her toward her destination but even more importantly, she figured out a way to apply her strengths so that the Earth's environment, commercial buyers, and banks are all winners.

Originally from China, Cao came with her parents as an immigrant to the U.S. when she was 17. This task was accomplished at a very difficult time in her life as she was finishing her senior year of high school. Cao also comes from a long family line of doctors, so striving for higher education and good grades wasn't a goal, but was expected. Cao had a vision to pursue biology like her mother and relatives, but saw interest in the environmental field. She also had a vision early on of starting her own business in the environmental consulting field, with an emphasis on real estate due diligence and hygiene services involving asbestos, lead, mold, and other microbial testing in buildings to ensure occupant safety and answer their concerns.

Her enthusiasm can be quite contagious. Performing a service that one believes in and putting your name on it can be good inspiration. Because Fulcrum is still in its infancy, new ideas still abound and the excitement can be felt by all around her. There is no such thing as "business as usual" at Fulcrum Resources, in large part due to Cao's enthusiasm.



LISA KAZ
Chief Executive Officer
ANSA Productions, Inc. dba The LA Auto Show Los Angeles

LISA Kaz joined the Los Angeles Auto Show (LAAS) in 1987 and in 1989 co-founded ANSA Productions, where she currently serves as President and Chairman. As President of LAAS, Kaz oversees one of the largest auto shows in the world, delivering worldwide media exposure, global industry networking and experiential marketing in the nation's biggest car buying market.

Under Kaz's stewardship, the Los Angeles Auto Show has become one of the most influential auto industry events on the planet, spanning more than 870,000 square feet at the Los Angeles Convention Center. For more than 24 years, Kaz has successfully gathered the who's who of the auto industry to unveil the future of mobility in the car culture capital of the world. Kaz will continue this tradition in 2013 with the launch of the Connected Car Expo (CCE), a three-day trade show, held in conjunction with LAAS Press Days that brings together thought leaders driving the convergence of the technology and automotive industries.

She's also a regular speaker for the UCSB Technology Management Program, a unique business education program that offers students a leading edge on business practices and entrepreneurship in technology-based companies. In addition to being president of one of the most influential and highly attended auto shows globally, Kaz has also headed up several of her own companies including AudioBookWorm.com, an online audiobook rental company, and The Kaz Organization, a real estate investment, brokerage, property management and development company.



ALYCE MORRIS WINSTON
Chief Executive Officer/Founder
The Jeffrey Foundation Los Angeles

EXECUTIVE Director/Founder Alyce Morris Winston opened the doors of The Jeffrey Foundation, a little Camelot for special needs children, and named it after her son, Jeffrey, in 1972. Every weekday, children of all ages are bussed to the center. Many of these are children suffer from illnesses such as muscular dystrophy, multiple sclerosis, cerebral palsy, Down's syndrome, and autism. Others are victims of abuse, crippling accidents, sight, speech and hearing impediments, or in-utero drug exposure. At least 95% of clients enrolled are living at or below poverty levels and thus struggling to access the necessary resources to address the needs of their children.

In 1964, Winston, a successful model married to an up-and-coming businessman in Chicago, adopted a beautiful little boy named Jeffrey. He was diagnosed with muscular dystrophy when he was 2 years old. The illness took a toll on the couple's marriage, and they were divorced in 1969. The now single working mother of a handicapped youngster moved to California to start a new life for her and her son.

Seeing a need first-hand, in 1972, she opened the first day-care center for severely handicapped children called The Jeffrey Foundation, named after her son. Jeffrey died in 1980, and in his name, she continues to build and expand the foundation. Under her stewardship, the Jeffrey Foundation strives to address the many needs of at-risk and special-needs families facing multiple barriers to self-sufficiency, well-being, and health, from across the Los Angeles region. To date, The Jeffrey Foundation has served over 10,000 children and their families.





We bend over backward.
To help you move your
business forward.

Smart business owners nationwide know the right advisor doesn't only solve their tax and assurance challenges but also helps reduce risk, structure transactions, and build and manage wealth.

We provide integrated, value-added services to companies in over 33 industries. Put our expertise to work for you.

(310) 477-0450 WWW.MOSSADAMS.COM

Assurance, tax, and consulting services offered through Moss Adams LLP. Investment advisory and personal financial planning services offered through Moss Adams Wealth Advisors LLC.

MOSS ADAMS LLP

Certified Public Accountants | Business Consultants

Assurance
Tax
Consulting
Risk Management
Transaction Services
Wealth Services

WOMEN MAKING A DIFFERENCE 2015

HONOREES

• Executive of the Year

CAMILLA ENG

Executive Vice President and General Counsel

JM Eagle

Los Angeles

CAMILLA Eng serves as the General Counsel and Executive Vice President of Sales for JM Eagle, the world's largest plastic pipe manufacturer. JM Eagle is a \$1 billion company that employs more than 1600 employees, and owns 23 manufacturing plants in the United States and Mexico. The company's legal and business needs are vast and complex, and incredibly, both legal and business units are led by Eng.

As JM Eagle's General Counsel, Eng closely monitors, investigates and resolves matters to head off problems whenever possible. Including herself, Eng's legal team consists of only three individuals. Yet her team manages a wide range of issues involving patents, employment matters, contracts, claims, and quality assurance/compliance issues. She also leads JM Eagle's 65-person sales department as its Executive Vice President. Because she is the company's chief legal officer, she already had an in-depth understanding of the company's production, facilities, manufacturing and legal issues. Her promotion to EVP of Sales one year ago was natural. Last year, Eng led the restructuring of JM Eagle's production and sales to its new and current customers. Since her promotion last year, JM Eagle has seen a 30% increase in its own profits.

In addition to her professional accomplishments, Eng is a leader in the community who does what she can to give back. Among other causes, she has served as a Commissioner on the City Planning Commission where she ensures fair zoning and decides on other issues that impact the lives of those living in the city.



Congratulations to Two Superior Leaders




MICHELE L. KAUFFMAN



LESLIE J. MAYER

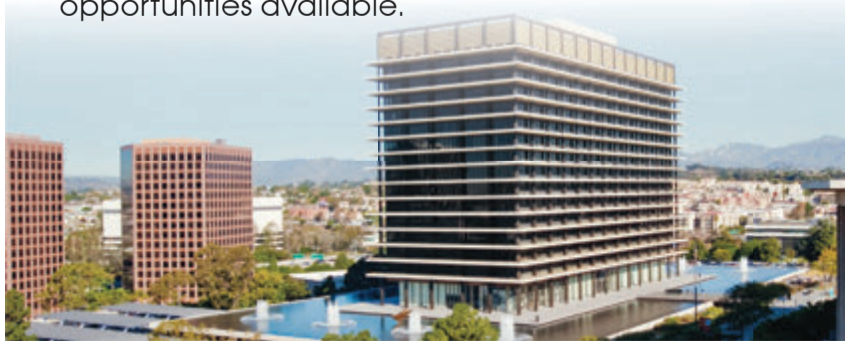
Cushman & Wakefield proudly celebrates Michele's and Leslie's recognition by the *Los Angeles Business Journal* as Executive of the Year nominees for the 2015 Women Making a Difference Awards. Their commitment to our firm, our clients and their colleagues drives our success.

Los Angeles  Department of Water & Power




Proud to support the Los Angeles Business Journal

2015 Women Making a Difference

LADWP helps local businesses thrive and invites Women, Minority and Other Business Enterprises to take advantage of the many bid and program opportunities available.






www.ladwp.com



Cushman & Wakefield of California, Inc. Lic. #00616335
 601 South Figueroa Street, 47th Floor, Los Angeles, CA 90017
 10250 Constellation Blvd., Suite 2200, Los Angeles, CA 90067
cushwakeloaarea.com
cushmanwakefield.com

 facebook.com/CushWakeLA
 [@cushwakelaarea](https://twitter.com/cushwakelaarea)
 linkedin.com/company/cushman-&-wakefield



Turning know-how into **how-to.**

Business plans can look great on paper, but it takes people to achieve real success in the marketplace. Now more than ever, businesses rely on HR professionals to make the most of a changing workforce. That's why HR professionals rely on SHRM, the leading global resource for human resources. SHRM's best-in-class training, conferences and competency-based certifications give HR professionals the skills to help their organizations advance. Because great HR makes great organizations.

Learn more about **SHRM-CP**SM (SHRM Certified Professional) and **SHRM-SCP**SM (SHRM Senior Certified Professional) certifications at shrm.org.

#AdvancingHR



SHRM[®]
SOCIETY FOR HUMAN
RESOURCE MANAGEMENT



WOMEN MAKING A DIFFERENCE 2015 FINALISTS

• Executive of the Year



BITÁ ARDALÁN
Managing Director
Union Bank, N.A.
Los Angeles

SINCE 2013, Bitá Ardalán has had two major roles at Union Bank – Founding Division President of the National Specialized Lending Group (NSLG) and, beginning in July 2013, Founding Group Head of Commercial Banking – Western Markets (CBWM).

Under Ardalán's leadership, the NSLG continued its rapid growth, cementing her status as the female manager with the largest and fastest-growing line sales group within Union Bank. Under her stewardship, CBWM is by far the largest contributor to the Group's bottom line prior to its consolidation with the Real Estate Industries group. No one individual had previously directly managed this entire unit at Union Bank. Her efforts, combined with her experience, have led to dozens of innovations that have improved efficiency, enhanced the customer experience, and accelerated average earning assets growth.

Ardalan is charged with CBWM's overall management, including managing the group's portfolio of loan commitments, leading all sales and marketing efforts, and setting strategic priorities and initiatives. These priorities include net client growth, return optimization, operating efficiency improvement, and in-market expansion within Union Bank's West Coast footprint. She was asked to assume this larger, enhanced role based on her consistent track record of dramatically growing profit center groups while maintaining strong credit quality and superior employee satisfaction and motivation. Ardalán implemented her renowned management expertise to upgrade, energize and motivate her team at Union Bank. Reflecting her conviction that hiring and motivating the most able leaders is the key driver of a unit's success, Ardalán assembled a team with diverse skills that shares her sense of urgency and drive to improve organizations.



KACY KEYS
Senior Vice President
& General Counsel
JH Snyder Company
Los Angeles

SINCE joining JH Snyder in 2007, Kacy Keys has been an essential member of and valuable asset to the organization. In her role as Senior Vice President and General Counsel, Keys plays an integral part in all aspects of a project including new project generation, partnership and operating agreements, site identification, due diligence, acquisitions, entitlement, asset management, general business operations, financing negotiations, commission agreements, leasing, purchase and sale agreements, and disposition. She is the lead negotiator and liaison for all public/private deals and has extensive experience in negotiation, implementation and compliance.

Keys has a comprehensive knowledge of land use and real estate law. She also has expertise in redevelopment, entitlement and public incentive programs, and she possesses exceptional negotiating skills vital to the implementation and approval of complex development projects. She has been a key player in several of J. H. Snyder Company's signature projects including redevelopment in North Hollywood - NoHo III; The Vermont; Hollywood 959 (959 Seward); 1601 Vine; and Museum Square. In 2014, she was voted as one of the 50 most influential women in real estate in Los Angeles.

Her tenacity was critical in the success of The Vermont, a mixed-use project in Koreatown with 464 residential units. She sourced the deal, assembled the capital stack, entitled the project, and was involved throughout the term of the project. Breaking ground in 2012, The Vermont was one of the first and largest high-rise developments to commence construction in Los Angeles after the economic downturn in 2008. The project was completed in a record 24 months, and was sold in July 2014 for \$284 million.



TERRI MESTAS
Vice President / Program
Director - BuildLACCD
AECOM
Los Angeles

IN 2013, AECOM, one of the largest and most respected architectural and construction management companies in the world, asked Terri Mestas to support the firm's winning proposal to perform program management services for the Los Angeles Community College District (LACCD).

Mestas was brought on board to deliver on the promises that had been made to taxpayers and other stakeholders. She went right to work as the new Program Director – the first woman to hold this position – assuming the mantle of leadership and reform at BuildLACCD.

In less than two years on the job, she has created and promoted AECOM's new culture of transparency, competence, and open communication at the Program, leading it to steady and measurable improvements under her leadership. This included a fresh and assertive approach toward community outreach, inclusivity, diversity, job growth, and apprenticeship programs; as well as renewed focus on participation from local business, the Small Business Advisory Council, and the veteran's community. These efforts enabled many small businesses to successfully compete on a more level playing field and win work in Los Angeles: not only at BuildLACCD, but on other public sector projects, too. Simultaneously, Mestas fostered an internal culture of continual improvement within BuildLACCD – that had not previously existed – to enhance staff training, heighten safety excellence, standardize operating procedures, develop Key Performance Indicators, accelerate project completion, and control budgets. Under her determined leadership, and with the efforts of her entire team, BuildLACCD has been transformed into a world-class program, and taxpayers can be better assured by the tangible and real reforms that Mestas has introduced and led.



REBECCA ROTHSTEIN
Managing Director-Wealth
Management
Merrill Lynch Private Banking &
Investment Group
Beverly Hills

REBECA Rothstein spends the majority of her day advising entertainment industry moguls, the Hollywood elite and other wealthy individuals from across the country on how to better manage their wealth. Based in the Beverly Hills office of Merrill Lynch, she is one of the company's top private wealth advisors, managing more than \$3.6 billion in assets for some 250 high net worth households in the Los Angeles region. She is recognized as one of the nation's top financial advisors.

While Rothstein is successful and dedicated to her day job, private wealth management is only one of her passions. The other – in addition to her family – is the Teen Cancer America foundation that she helped establish in the United States and acts as the current Chairman of the Board.

Rothstein became involved with Teen Cancer America in 2012 when her good friend and client Roger Daltrey of The Who was looking for help to expand the charity he co-founded in the U.K. dedicated to addressing the gaps in the teen and young adult cancer experience to the United States. Once Rebecca heard about the opportunity to get involved in such an important issue, and help spread the word in the U.S., she quickly stepped up to the plate. Utilizing her innate business leadership skills to drive forward the charity's mission, tireless fundraising and entertainment industry connections, Teen Cancer America's first event raised \$2 million dollars, and America's first hospital facility designed exclusively for teenagers with cancer was built at UCLA.





It's more than a business. It's your livelihood.

As one of the nation's largest insurers of small businesses, Travelers advocates for economic opportunity – one business and one community at a time. In addition to developing customized initiatives to protect small businesses, we are committed to working toward public policy solutions for small business owners and helping them prepare for the unknown through education and leveraging our expertise in risk mitigation. Travelers has undertaken these efforts because the company understands that the health of small business is key to economic prosperity, competitiveness and the preservation of the American Opportunity.

Travelers is proud to support Women Making a Difference!

TRAVELERS 
It's better under the umbrella®

travelers.com

© 2015 The Travelers Indemnity Company. All rights reserved. Travelers and the Travelers Umbrella logo are registered trademarks of The Travelers Indemnity Company in the U.S. and other countries. M-17011-5 New 4-15

WOMEN MAKING A DIFFERENCE 2015

HONOREES

• Rising Star of the Year



LINDA DEYAMPERT
Senior Manager, Scheduling Operations
National Football League Network
Culver City

LINDA DeYampert took on a traditionally male-dominated industry when in July 2006 she stepped into the role of Manager of Scheduling Operations for one of the fastest-growing cable networks in the country – the National Football League (NFL) Network in Culver City. DeYampert came to the NFL after working for NBC for 24 years. She applies her experience – as well as her higher education degrees earned as a full-time working single mother, toward her management and leadership skills at the NFL Network.

She is the first African American woman to hold a management position at the company, and in June 2012 she was promoted to Senior Manager of Scheduling Operations. Her responsibilities include management of scheduling operations, scheduling personnel and staffing of over 200 freelance employees on a day-to-day basis for all studio operations and some remote production.

In addition to these responsibilities, DeYampert volunteers in the workplace program at the NFL with the Big Brothers & Big Sisters of America. She mentors a high school student in this program while providing encouragement, confidence and determination for her mentee. Most recently, she has also volunteered in the Best Buddies Program at the NFL, which creates opportunities for one-to-one friendships, integrated employment and leadership development for people with intellectual and developmental disabilities. DeYampert is also the President of the National Black MBA Association (Los Angeles Chapter), a non-profit organization that provides innovative programs, build partnership with key stakeholders and increase awareness and facilitate access to graduate education programs and career opportunities.



• KNOW

• LIKE

• TRUST

• REFER

An exceptional way to **build relationships** and generate commerce.

- Meet top referral sources
- Make strategic partnerships
- Connect clients with valuable resources
- Collaborate to solve client needs



ProVisors is a community of over 4,000 experts in a wide range of professions, including attorneys, accountants, bankers, insurance, financial services, real estate, and consultants, from international, regional and small firms, who have the common goal of **sharing knowledge and resources** to provide exceptional, multi-disciplinary solutions to clients.

☎ (818) 382-6496  provisors.com

artsBrookfield PRESENTS

FREE concerts and art exhibits in downtown Los Angeles!



SMILE!

SMILE! A PHOTO ANTHOLOGY BY VII

Over 80 Images | May 4 - July 17

Bank of America Plaza, DTLA



HUMP DAY PICK ME UP!

SOUNDS OF LA

Weekly Lunchtime Concerts

Wednesdays | May 6 - June 10

Wells Fargo Center, DTLA



MORNING MUSIC BUZZ

ACOUSTIC CAFFEINE

Monthly Music Performances

Wednesdays | June 7 - November 4

The Gas Company Tower, DTLA

For a complete calendar listing visit www.ArtsBrookfield.com

WOMEN MAKING A DIFFERENCE 2015 FINALISTS

• Rising Star of the Year



CHERYL CHANG
Partner
Blank Rome LLP
Los Angeles

SINCE joining Blank Rome in 2010, Cheryl Chang has played a leading role in defending various clients against consumer protection claims in a variety of industries, as well as taken on a number of leadership roles throughout the firm in pro bono, diversity, and hiring. In particular, she has extensive experience in defending banking, pharmaceutical, and entertainment clients against consumer protection claims and has developed the Consumer Finance Litigation practice in Blank Rome's Los Angeles office. As an indication of her success, she was elected Partner in 2014.

One notable case was *Joseph v. Costco et al.* in which Chang obtained dismissal of Unfair Competition (UCL), Consumer Legal Remedies Act (CLRA) and False Advertising (FAL) claims brought against client, Apotex Corp., a generic pharmaceutical manufacturer. In *Stanley v. Bank of America, N.A. et al.*, Chang successfully obtained dismissal of UCL and CLRA claims brought against Stearns Lending based on allegations of fraud, conspiracy, and elder abuse.

Chang has also served on the firm's diversity committee since 2012. In conjunction with her work on the committee, Cheryl also manages the Firm's Diversity Blog. She also co-chairs the firm's *Attorneys of Color affinity group*, which holds internal meetings for Firm attorneys and organizes Firm-wide events to bring awareness to the group and strengthen ties between the group members. Chang has organized and hosted several events with general counsel and in house counsel, inviting them to speak at the Firm about diversity in the legal industry.



COOPER HARRIS
Founder and CEO
Klickly
Venice

COOPER Harris is the CEO and founder of Klickly, a one-touch social giving platform, which enables customers to instantly connect with causes championed by their favorite brands, celebs and nonprofits. Cooper was one of the first females to win the Los Angeles AT&T Hackathon and was responsible for producing the first-ever Tech Summit and Social-Impact Hackathon at Sundance. She is also a sought-after speaker and panelist on all things Hackathon & Women in Tech.

She is an accomplished actress and musician and is a mentor at NFTE, which teaches kids entrepreneurship in schools. Cooper frequently speaks about being a woman in tech and about the intersection of entertainment and tech at venues including CES, USC, SXSW, Silicon Beach Fest, iMedia Summit, Sundance, and more. She is also the award-winning producer of digital commercial content for major brands and channels such as Kimberly Clark, DailyMotion, Post It Notes, 3M, Endemol.

Previously, as the executive director of The Oasis Foundation, Cooper oversaw initiatives focused on entrepreneurship and innovation and in her first startup, a digital production company, she created and sold her own shows and content to companies including 3M, Kimberly Clark, DailyMotion and studio production giant, Endemol Entertainment.



ASHLEY JASON
Associate
Holland & Knight LLP
Los Angeles

ASHLEY Jason has become an indispensable member of Holland & Knight's Los Angeles real estate team, a notable asset to Los Angeles County's real estate business, and a tireless contributor to projects that serve important community needs.

To understand the position Jason has quickly earned as a commercial real estate and real estate financing lawyer in Los Angeles, it is important to note that she has developed her excellent reputation while working at a leading global law firm whose real estate practice is one of the largest of any U.S. law firm. Given that context, it is no small accomplishment for Jason to have become a go-to associate for senior Holland & Knight partners on the firm's West Coast team (as well as firm wide); to have established solid expertise in real property acquisitions and real estate finance; and to receive regular praise from our clients, who expect the highest quality legal services. Leading law firms expend a great deal of effort seeking out associates with Jason's lawyering skills, leadership ability and commitment to the local community, and the firm considers itself fortunate to have her on the team.

As a rising star at Holland & Knight, Jason has made significant contributions to a number of complex real estate transactions. In several recent deals that have fostered business development and community improvement in Greater Los Angeles, including representing a publicly traded Singaporean company in the acquisition and financing of Los Angeles' iconic U.S. Bank Tower.



ERICA L. MOORE-BURTON
Founder / President
Outstanding Mother's
Gathering | Round Hill
North Hills

ERICA Moore-Burton, Esq. is from London, England and is an attorney, author, award winning legal recruiter and entrepreneur that has worked and lived in the Los Angeles business community for a little over a decade. In that time, she has been an active part of LA's business scene and has always given back to the Los Angeles community. She started her executive recruiting career at a well-known Fortune 500 international recruiting firm, where she was the recipient of numerous awards for her sales and leadership acumen. Since then, she has worked in leadership roles with other leading national executive recruitment firms and is currently the Principal of Round Hill Search, a legal staffing and placement firm.

Moore-Burton has been an established recruiter in the legal industry in Los Angeles for many years, but what makes her a rising star is the current work that she is doing with professional working mothers in Los Angeles. She is an innovator and creator and executes her vision with grace and enthusiasm and has been instrumental in not only moving the dialogue forward about balancing motherhood and professional working life, but providing a space for professional working mothers in Los Angeles to come together to make their lives better at home and in the workplace.

In 2013, she recognized the need for more support in the workplace for professional working mothers, and established Outstanding Mothers Gathering (OMG), the premier networking organization for professional working mothers in Los Angeles and their mission is to bring together professional working mothers for networking, education and community support.





Live L.A. Give L.A.™

“I give because it’s my local children’s hospital.”



We Treat Kids Better

Donate today CHLA.org/GiveLA

WOMEN MAKING A DIFFERENCE 2015

HONOREES

- **Philanthropist of the Year**

GLORIA MARIA BORGES
 Chief Executive Officer and Founder
 The Wunderglo Foundation
 Los Angeles

THE Los Angeles Business Journal is proud to posthumously recognize the extraordinary and inspiring generosity of our Philanthropist of the Year, Gloria Maria Borges, who passed away last year after a prolonged bout with colon cancer. Borges' philanthropic social action took many dimensions — from her direct donations to the tremendous impact she's had across the country, and well beyond, in inspiring others to give of their time, their resources, and their hearts.

Borges gave generously, even in her final hours, when she pledged an additional \$100,000 to the Wunderglo Foundation that she had devised to prevent other lives from being extinguished too soon. That gift, and the \$500,000 the Foundation would give to the USC Norris Comprehensive Care Center, were made possible because of Borges' donations to this cause. She was devoted to curing colon cancer, and together with some of the foremost colon cancer experts in the world, she built a fundraising and research strategy designed to accomplish this feat. The financial donations Borges orchestrated in 2014 are only the beginning, but are first steps that portend colon cancer's demise.

Borges' philanthropy's true essence, and truest motivations, existed in the hundreds if not thousands of individuals she touched as she helped them navigate the perils of colon cancer diagnoses. She achieved this indirectly through her candid and uplifting essays on her blog; and through her advocacy efforts across the country, she built relationships with too many to count, all of whom came to Borges—herself struggling against this disease—for help and hope — both of which she provided through to her final moments.



**University of Phoenix congratulates
 Luanne Arredondo, Linda DeYampert,
 Maribel Hines, Kristin Walle and
 Jennie Wong for being named finalists
 for the 2015 Women Making
 a Difference Awards.**



“I love the personal relationship I have with First Republic – it’s a relationship with the whole team and that really counts.”

CHARLENE LI
Author and Founder, Altimeter Group



FIRST REPUBLIC BANK
It's a privilege to serve you®

(855) 886-4824 or visit www.firstrepublic.com New York Stock Exchange Symbol: FRC
Member FDIC and Equal Housing Lender

WOMEN MAKING A DIFFERENCE 2015 FINALISTS

• Philanthropist of the Year



MARTA FERRO
President, Founder, Chief Executive Officer & Co-Founder Starfish Impact & Pink51 Sherman Oaks

IN 2015, Marta Ferro's company, Starfish Impact, will celebrate 10 years of business in Los Angeles, but more powerful than success in its time is the success in its fundraising and impact. Her company has raised over \$40 million dollars for nonprofit organizations that are making a difference here in LA and beyond. Ferro and her team work with approximately 10 non-profits daily to provide them consult and introduction into funding, board development assistance, and other key connections for social good. In addition to this contribution, Ferro is a partner at SVP-LA, which pools financial resources and pro-bono consulting hours to assist nonprofit organizations, mentors through education and coaching, and provides platforms to seek further connections and funding. The organization is focused on social innovation and impact investing opportunities for the local community.

As if this isn't enough, last year Ferro co-founded a new tech startup called Pink51. Pink51 harnesses the purchasing power of women and provides a platform to choose to shop businesses that value women leadership and give back to charities while doing it. The website has amassed hundreds of "Pink" businesses to date and incredible partners that give support.

Ferro's resume both in philanthropy and business achievement reads like an award winning novel over the last 25 years of her career. She served as President of Step Up Women's Network, helped co-found a women's alumni business group for Anderson (Women's Global Connection), graduated with her MBA from UCLA's Anderson, and is actively involved with her son's school spearheading fundraising and further community engagement.



CYNTHIA KERSEY
Founder / Chief Executive Officer Unstoppable Foundation Agoura Hills

CYNTHIA Kersey embodies how each of us can solve the world's most seemingly impossible challenges through simple individual actions. She is a two time best-selling author and the Founder and CEO of the Los Angeles based Unstoppable Foundation, a nonprofit organization she started in 2008 with the mission of ensuring that the world's most vulnerable children get access to education.

The trajectory of Kersey's life's work began 18 months after her first book was published, when she found herself separated from her husband of 20 years — and devastated. One of her mentors, Millard Fuller, the founder of Habitat for Humanity, gave her advice that was life changing. He said, "When you have a great pain in your life you need a greater purpose." In December 2000, one year after her separation, she had raised \$200,000 and took a team of 20 people to Nepal to build the first three of the 100 houses that were subsequently built.

In 2005 after Kersey had written second book, "Unstoppable Women," she was looking for her next philanthropic project. She had learned that education has a larger impact on the eradication of poverty than any other form of aid or help we can give. From her vision to help communities lift themselves out of poverty, the Sponsor a Village program was created. This program supports the basic needs of developing communities by eliminating the obstacles preventing children from accessing education. The program is made up of five pillars crucial to lifting communities from poverty: education, clean water and sanitation, food and nutrition security, and alternative income training for adults.



MONICA SHILLING
Partner Proskauer Rose LLP Los Angeles

MONICA Shilling is a partner Proskauer's Corporate Department and co-head of the firm's Private Equity Group. In 2004 she was specifically recruited to help establish Proskauer's West Coast corporate and securities capabilities. Her work and presence have certainly fostered success as, since her arrival, Proskauer's Los Angeles-based corporate practice has grown *sevenfold* and become one of the premier transactional practices on the West Coast. Despite a full and busy schedule dictated by her work, she always makes time for her philanthropic passion for public radio.

Shilling serves on the Board of Directors of the KCRW Foundation, which provides financial support and other resources to KCRW, Southern California's leading National Public Radio affiliate. Her passion for KCRW began when she moved to Southern California in 1995. She joined the KCRW Foundation Board in 2012. She serves on the KCRW Foundation Board's Development Committee and has been hard at work with her fellow Board members on KCRW's Capital Campaign related to the KCRW Media Center. This Capital Campaign marks the first major fundraising initiative in KCRW's nearly 75-year history. The Center has been custom-designed to meet KCRW's needs and allow the station to connect to audiences in new, profound ways. The Capital Campaign will also allow KCRW to invest in programming that moves KCRW to new levels of excellence and create new technologies that preserve KCRW's mission amid today's ever-changing media landscape.

Shilling continues to be highly instrumental in KCRW's growth and community impact by providing leadership and expertise, as well as raising funds and charitable donations to secure KCRW's public service and future outreach.



CLAIRE WINELAND
Founder Claire's Place Foundation, Inc. Redondo Beach

CLAIRE'S Place is a non-profit organization designed to help children and families affected by cystic fibrosis. Founder, 17-year-old Claire Wineland, was born with cystic fibrosis or "CF." In her short life, Wineland has undergone over 20 surgeries and has spent months at a time in the hospital including being in a coma and was also a Make-a-Wish recipient. This is not, however, what characterizes her. She has dedicated her life to making a difference in the lives of others living with cystic fibrosis.

Wineland's experiences have catapulted her into a position of being an advocate and an inspirational model for people living with this disease. For instance, Pepperdine University asked her to come and speak to their student body. She has documented and created videos on how to enjoy life with CF and live life to the fullest, many of which have gone viral.

Thanks to Wineland's philanthropic and nurturing spirit, and her passion to educate others about CF, countless children and families with CF who need assistance benefit from her fundraisers. Social workers at partnering hospitals provide families with children with cystic fibrosis information about Claire's Place Foundation. Families feeling uncertain and isolated are offered support and information on how to work through the treatment and care process by other parent volunteers.

Even with school, homework, treatments, lengthy hospital stays, having written two books and all the other important things on a typical teenager's mind, Wineland puts 200% into her Foundation, ensuring that others with CF are being well taken care of.





small CLASSES

BIG
EDUCATION

PEPPERDINE

Part-Time MBA | Full-Time MBA | Executive MBA | MS Programs

If you're a working professional interested in pursuing a business degree part- or full-time, you'll expand your thinking and widen your network as a Graziadio Business School student. Small classes and accessible faculty mean you're part of a close-knit, high caliber community that helps strengthen and clarify your aspirations and supports your career advancement.

Our top-ranked degree programs integrate hands-on learning into an experience-driven, results-oriented education. Go beyond traditional case studies and solve multifaceted, real-life business challenges for global powerhouses in the Education-to-Business course, which was named one of the **Top 10 College Courses That Will Pay Off at Work**, according to *U.S. News & World Report*.



Get to Know Us. bschool.pepperdine.edu/mba-la | (800) 933-3333 | Los Angeles | Malibu | Irvine | Encino | Westlake Village | Silicon Valley

WOMEN MAKING A DIFFERENCE 2015

HONOREES

• Volunteer of the Year



REBECCA HAUSSLING
 Director of Communications
 Five Acres
 Altadena

REBECA Haussling is Director of Communications at Five Acres, an organization dedicated to finding permanent family solutions for the most vulnerable children in Los Angeles. Her tireless work has made a significant impact on thousands of children in Los Angeles and she brings to her role a tremendous background in philanthropy and volunteerism.

After launching *Pasadena Magazine* in 2007 and overseeing its growth to a multi-million dollar business, Haussling switched careers to Five Acres, and it was a perfect match. When she came to Five Acres, she recognized the need to freshen up the messaging but also honor the 127-year legacy. She strategically launched a media campaign, with outdoor, newspaper, radio and social media tied to National Adoption Awareness Month. With a relative "shoestring" budget, the campaign saw incredible results in just a few short months. Since the campaign began, Five Acres online presence increased 155% and the cause-awareness of the organization has increased by 75%!

Further, her development of "Boy 5A," a unique artistic project of a life size sculpture of a 4 year old boy, meant to educate the public on the crisis that is the current foster care system, has brought Five Acres to an all-new level and kicked off the "20,000 by 2020" campaign, with the goal of finding permanent family solutions for the more than 20,000 children currently living in the foster care system in Los Angeles, by the year, 2020. Add this to her hours of personal time given to numerous other charities for HIV/AIDS victims, women and children and she is a natural recipient for this award!



usbank.com

Visionary...
 Collaborator...
 Leader...
 attributes of a true achiever

U.S. Bank salutes

Carol Schatz

**For being honored by the
 Los Angeles Business Journal at its 2015 Women
 Making a Difference Symposium & Awards!**

Your commitment, dedication and philanthropic efforts throughout Los Angeles County make our neighborhoods better places to live. Because when our communities succeed, everyone wins. We are proud to recognize all of this year's honorees — across all industries — for their outstanding achievements and the positive impact they have made in our communities.





HOTEL • ATTRACTIONS • EVENTS

THE QUEEN MARY

EXPERIENCE THE GRANDEST OCEAN LINER EVER BUILT



FULL SERVICE HOTEL, FINE DINING, MEETING SPACE & UNIQUE ATTRACTIONS



THE WHEELHOUSE



BANQUET AND CATERING VENUES



FIRST-CLASS STATEROOMS



MEETING AND CONFERENCE SPACES

562.499.1749 ★ **QUEENMARY.COM** 1126 QUEENS HIGHWAY, LONG BEACH, CA 90802

WOMEN MAKING A DIFFERENCE 2015 FINALISTS

• Volunteer of the Year



DARLENE GARTRELL
Senior Vice President
Aon Risk Solutions
Los Angeles

DARLENE Gartrell, Esq., a native Los Angelino, joined Aon Risk Solutions in 2000 as a part of the organization's Financial Services Group. In her role as claims attorney, she provides advice and counsel to internal and external clients on coverage and claim matters pertaining to financial lines insurance, including directors' and officers' liability, employment practices insurance and fiduciary liability. She particularly enjoys advocating on behalf of her clients with insurance carriers where there are challenging issues surrounding coverage.

Several years ago, Aon Corporation rolled out its Business Networking Groups (now Business Resource Groups), affinity teams designed to create a more inclusive culture, professional networking opportunities for employees, recruiting and employee training and education.

Gartrell saw this as the perfect opportunity to re-engage her personal passions while also making a difference at Aon and in her community. In an effort to fulfill Aon's inclusion strategy, Gartrell has organized Aon's Latino and African-American Networking Groups in Aon's local office and supported and participated in all of the teams, including, the Women's International Network, Aon Pride, AonLink and the Asian Pacific Islander Business Resource Groups. She strongly advocates for and encourages participation from all colleagues to support the company's Business Resource Groups that, in turn, provides opportunities for Aon employees to connect with the community-at-large. Under her leadership, Aon employees have supported and engaged with philanthropic organizations, including March of Dimes March for Babies; hosted a Holiday Toy Drive for Children's Law Center; volunteered and created volunteer opportunities for Reading for Kids; and participation in a number of other worthy causes.



METTE KURTH
Partner
Fox Rothschild LLP
Los Angeles

METTE Kurth is a steadfast advocate for women's and girls' rights. She has dedicated substantial time to giving back and helping in any way possible. She actively follows current events affecting women throughout the world and looks for ways to become involved and lend a helping hand. Not only does she do what she can to raise awareness and fundraise, she also rallies her family, friends and colleagues at Fox Rothschild to join the fight. She is heavily involved in numerous community efforts and continues to find new ways to be a voice for women both in her backyard and globally.

Kurth is currently working closely with Ramaa Mosley and Monica Timpe to support the Jubilee Campaign in raising funds through its Education After Escape campaign to assist 57 of the more than 270 Nigerian schoolgirls, ages 15-19, who were kidnapped by the Nigerian terrorist group Boko Haram in April 2014. These girls were at their boarding school in Chibok preparing for final exams, studying to be professionals with dreams of being doctors, lawyers, scientists and pilots when they were captured. The 57 girls escaped from their captors and made harrowing journeys home. In conjunction with Jubilee, Kurth has worked to raise awareness and to fundraise on behalf of these girls, ultimately securing admission for all 57 girls in boarding schools in the US and has raised the funds needed to cover the transportation costs for the initial 12 girls to travel to the US. Kurth is continuing to fundraise to bring the remaining girls here where they will receive an education and trauma counseling.



KRISTINA MITCHELL
Actor / Activist
Pasadena

KRISTINA Mitchell has been a long-time activist and advocate for women and girls. She volunteers with V-Day, One Billion Rising, A Window Between Worlds, City Hearts, and More Than Me. She's also worked with and has relationships with GWEN, Linda's Voice, I Am That Girl and The National Women's History Museum. She is a proud member of The New Hollywood Women's Goal Group, Inc., a women's philanthropic goal group created to support women in the industry through goal setting and charity work. She also volunteers as the Head of Social Media for The New Hollywood.

For the past three years, Mitchell has served on the committee for A Window Between World's Artworks for Healing Gala. This year, she will serve as chair of the committee for the event for the third year in a row, which raised over \$100,000 to help women and children who are survivors of violence. Mitchell was also recently added to the Board of Directors for A Window Between Worlds. She is also an LA area organizer for One Billion Rising, a global movement reaching to end violence against women and girls. She has been an organizer for the events from its conception, three years ago, and for the past two years she has spoken at Los Angeles City Hall alongside Mayor Eric Garcetti, Frances Fisher, and Jane Fonda.

Impressively, this year will also mark the fifth consecutive year of Mitchell's directing and producing "The Vagina Monologues" in order to raise money for women and girls who are victims of violence. All proceeds from the show benefit V-Day and A Window Between Worlds.



AMY ZIMMERMAN
President and Founder
Amy Zimmerman
& Associates, Inc.
Torrance

As the President of a woman owned business for over 22 years, mother of two daughters, and tireless supporter of multiple charitable foundations, Amy Zimmerman is a person who clearly makes a difference in numerous lives. 2015 is her 22nd year of running and managing a very successful staffing firm and 30th year of recruiting. Amy Zimmerman and Associates has remained in the Top 20 of all staffing firms in Los Angeles County for several years. Even during the recent recession, the business remained strong and vibrant.

Besides her tireless efforts of expanding the staffing firm's presence, Zimmerman is deeply involved in numerous charitable foundations. For the past four years, she has been involved with fundraising for the YMCA Capital Campaign. She has personally brought in more donors than any other member of the Campaign. She has also raised money for the MS Society for the past four years, participating in a 50-mile walk to San Diego, and being named "Most Spirited Team MS Walker." She is also a Rotarian and is dedicated to always putting service above self. She recently traveled to Mexico in support of a Rotarian mission for children and fire fighters in La Paz, delivering school supplies and fire-fighting equipment.

Zimmerman also continues to be a supporter of AIPAC and has attended numerous events in Washington, D.C. furthering the cause and beliefs of the AIPAC organization. She was also recently asked to become a member of the prestigious Congressional Club, supporting Israel and is also a supporter of the Jewish National Fund and is hosting her first exchange student from Japan this year.



Find the **Leader within** you



with a Psy.D. in **Organizational Management and Consulting**

Leading an organization and helping teams achieve lofty goals is both challenging and rewarding. Let Phillips help elevate your career with its doctoral program in Organizational Management and Consulting. Our curriculum combines academic instruction, hands-on practice, and professional development in an intensive program designed expressly for working professionals.

A Phillips graduate education provides you with the tools and knowledge it takes to develop strong teams, share best practices, think strategically and create cohesive, collaborative organizations that work well in a rapidly changing world.

Phillips
Graduate Institute
Education for
the real world

Discover more.
818.386.5660 or
info@pgi.edu

19900 Plummer Street | Chatsworth, CA 91311 | www.pgi.edu



WOMEN MAKING A DIFFERENCE 2015

HONOREES

• Corporate Advocate of the Year

CAROL SCHATZ

**President and Chief Executive Officer
Downtown Center Business Improvement District,
Central City Association
Los Angeles**

CAROL Schatz is the current President and CEO of both the Los Angeles Downtown Center Business Improvement District (DCBID) and the Central City Association (CCA) of Los Angeles, two of the city's leading business advocacy groups. In 1997, she became the first woman ever to be appointed as President and CEO of the CCA, the City's leading voice of business on important city and statewide issues including land use, transportation and economic growth. Just two years later, she established the DCBID to further her vision for a revitalized Downtown Los Angeles. Under her leadership, the DCBID and CCA have helped transform what was once a "9 to 5" district into one of the hottest urban communities in the country.

As President and CEO of both organizations, Schatz' primary role is to spearhead all efforts to attract investment, development, new businesses, residents, while enhancing the quality of life in Downtown L.A. She serves as an advocate for the area's business community on economic and civic growth.


In 1999, Schatz launched the Adaptive Reuse Ordinance and organized state funding and incentives to help developers convert empty office buildings into housing. Under her leadership, the CCA worked with the City Council to revive the Civic Center Authority, which authorized a master plan for the area. Since then, Downtown has seen its residential population triple, its property values double, and had more than 700 businesses open or relocate to the area – and the Renaissance shows no signs of slowing. In 2014, Downtown investment and development is at an all time high, thanks in large part to Schatz' efforts.



The NFL congratulates our
Rising Star of the Year,

Linda DeYampert
and all of the nominees for the

2015 Los Angeles Business Journal's
Women Making a Difference Awards.


American Airlines 

We're putting
your travel to work.

The #1 airline out of LAX is bringing even more value to your business travel with Business Extra[®], a loyalty program for small and medium businesses, and AirPass, a pre-paid last-minute travel program for companies of any size.

Which program is right for your business? Contact American at 800-433-6355 or nbmcentral@aa.com to find out.

Great for **Business**



American Airlines, aa.com, the Flight Symbol logo and the Tail Symbol are marks of American Airlines, Inc. oneworld is a mark of the oneworld alliance, LLC. © 2015 American Airlines, Inc. All rights reserved.



JOIN US AND SAVE WITHOUT SETTLING

GET A \$150 ACCOUNT CREDIT FOR YOUR BUSINESS
for each smartphone line.

New 2-yr activation on a \$34.99 or higher plan req'd.



SAMSUNG
Galaxy S6 | S6 edge

Get the coverage, speed and reliability your business needs with America's Most Reliable Network. Experience why more small businesses choose Verizon than any other wireless carrier.*

AMERICA'S LARGEST AND MOST RELIABLE 4G LTE NETWORK

CALL: 1.800.VZW.4BIZ | CLICK: vzw.com/business-bill-credit | VISIT: vzw.com/storelocator

*Results based on third-party study. Account credit applied within 2-3 billing cycles. Credit will be removed from account if line is suspended or changed to non-qualifying price plan after activation. Offer expires 5/17/2015. Activation/upgrade fee/line: \$40. IMPORTANT CONSUMER INFORMATION: Corporate Subscribers Only. Subject to Major Acct Agmt, Calling Plan, & credit approval. Up to \$350 early termination fee. Offers & coverage, varying by svc, not available everywhere; see vzw.com. While supplies last. Restocking fee may apply. In CA: Sales tax based on full retail price of phone. Add'l CA eWaste fee may apply. © 2015 Verizon Wireless. 15423

WOMEN MAKING A DIFFERENCE 2015 FINALISTS

• Corporate Advocate



ORLY ADELSON
President
ITV Studios America
Sherman Oaks

ORLY Adelson is President of ITV Studios America, the US flagship of ITV and one of the fastest-growing and most successful production companies in the United States.

With her remarkable history, depth and breadth of experience, and unparalleled work ethic, Adelson is a true Los Angeles business powerhouse. As a long time resident of LA, she is a passionate advocate for opportunities and growth for women in her field, encouraging and mentoring young talent for great success. Adelson is a well-rounded, philanthropic leader who takes the time to make a difference – in both the industry, and in the community.

As President of ITV Studios America, Adelson has shepherded a tremendous increase in the company's sales to cable and broadcast networks. In addition, she has solidified key intellectual property partnership deals as well as deals with talented veteran producers to further enhance the range of projects it can bring to market.

In her role, Adelson oversees all aspects of ITV Studios America's operations on both the West and East Coasts and her programming oversight encompasses the company's extensive slate of series, including their signature shows *Hell's Kitchen* and *The First 48*. Adelson is a fervent supporter of localized production with numerous ITV Studios America series including *Hell's Kitchen*, *Cesar 911*, *#RichKids of Beverly Hills* and *The Chase*, as well as a multitude of pilots and presentations all being produced in the Los Angeles area. Additionally, the company utilizes a wide range of local studios, post-production facilities, crew and more, continuing to encourage strength and growth in the local industry job market.



SUSAN JENNIFER BOOTH
Partner, West Coast Real Estate
Practice Group Leader
Holland & Knight LLP
Los Angeles

SUSAN Jennifer Booth's leadership positions at a top corporate law firm, together with her effectiveness in encouraging women to seek significant roles in the Los Angeles County business community, make her a true corporate advocate for the advancement of women. To begin with, she has devoted countless hours to supporting fellow women lawyers at Holland & Knight's Los Angeles office, each of whom contribute to the county's business life, whether in real estate, finance, healthcare, transportation or general corporate governance.

One noteworthy effort Susan has made at her firm has been serving on the selection committee for Rising Stars, a unique Holland & Knight program that mentors outstanding women lawyers at the firm and trains them for leadership positions. She has become a role model for applicants and participants, including several associates who recently made partner. Booth goes out of her way to provide guidance on everything from practice development to leadership and management — just as she does for many other woman attorneys, whether they work at Holland & Knight, are affiliated with Commercial Real Estate Women (CREW) or attend events she organizes.

As a prominent attorney in Los Angeles County, Susan also strengthens the linkages between woman and local business by virtue of her own community involvement. Despite the demands of her legal practice and leadership of an busy Holland & Knight practice team, Booth is known for her enthusiasm in embracing these opportunities to help bring together the Los Angeles County business community and women who have a great deal to contribute to it.



EVIE JEANG
Founder and Managing Partner
Ideal Legal Group, Inc.
Alhambra

Apioneer in international family law and a prominent legal advisor to small businesses in her community, Evie Jeang has demonstrated her unwavering commitment and success as an entrepreneur, a businesswoman and a philanthropist. Founder and Managing Partner of the Alhambra-based law firm Ideal Legal Group, Inc., Jeang has grown the firm's clientele and expanded its reach to include offices in San Francisco, New York and now San Diego with services in Mandarin, Cantonese and Spanish. She leads a team of four highly skilled attorneys in practice areas, including labor and employment, family law, international child custody, workers' compensation and immigration.

Since founding Ideal Legal Group in 2006, Jeang has carved a new niche in helping families navigate the intricate laws governing international surrogacy, In Vitro Fertilizations (IVF) and the freezing of eggs and embryos.

As an Asian American business owner herself, Jeang founded the firm with the goal of servicing the largely underserved population of Asian and Latino business owners in Southern California, particularly her own community in the San Gabriel Valley. She hosts Free Legal Happy Hours every month at her office headquarters to provide legal advice to local business owners and professionals, on matters such as workers' compensation, employment and labor law, and immigration issues. For the past two years, she has been awarded sponsorships from ARAG Helping Hands, in order to host a free legal clinic for the American Bar Association's Law Day Event. There, she provides complimentary forms and legal counseling for residents and their families on the naturalization process.



NANCY YAFFE
Partner & Co-Chair of the Women's
Initiative of Fox Rothschild
Fox Rothschild LLP
Los Angeles

AN experienced labor and employment attorney with Fox Rothschild, Nancy Yaffe serves as a steadfast advocate for her clients with the continued goal of helping them prevent employment issues before they occur. She provides comprehensive pre-litigation counseling and advises clients across the U.S. on employment-related issues.

Yaffe works closely with clients — including prominent southern California hotels, retailers, manufacturing, technology and service providing companies — on all types of employee claims and lawsuits involving discrimination, harassment, retaliation and wage-and-hour violations. She provides pre-litigation counseling and advice on harassment, discrimination, ADA/disability compliance and union avoidance, and she has conducted numerous training presentations on sexual harassment prevention, leave of absence compliance, wage-and-hour issues and retaliation.

Yaffe also conducts training presentations on sexual harassment prevention, labor and employee relations, new legal developments and other timely employment issues. Additionally, she drafts and reviews client policies and handbooks to ensure legal compliance, and conducts preventive audits and investigations into alleged workplace misconduct and pay practices. She is a frequent presenter on human resources and employment law issues to the Los Angeles Hotels Human Resources Association (LAHHRA) and other professional organizations. In February of this year, she spoke to LAHHRA members about new developments in wage-and-hour law, including, California paid sick leave, overtime/double-time, meal and rest periods, employee expenses, vendor agreements, timecard edits/working off the clock, final pay and out of state employees working in the state. Additionally, she spoke at an LA Restaurant HR group about legal updates for 2015 that will affect the restaurant industry.

**You have a passion
for your business.**

**We have a passion
for protecting it.**



You live for the challenge of managing risk and discovering opportunities no one else sees. You have a passion for your company. Liberty Mutual Insurance has a passion for protecting it. For more than 100 years, we've helped all types of businesses thrive. With coverages like general liability, property, and workers compensation, you'll get the peace of mind you need to focus on staying ahead of the competition. Talk to your agent or broker today about Liberty Mutual Insurance, or go to libertymutualgroup.com/business.

  @LibertyB2B



WOMEN MAKING A DIFFERENCE 2015 NOMINEES



Janis Adams
Owner & Chief Executive Officer
Academic Achievers
Santa Monica



Nancy Adzentoivich
VP, Managing Director West
Resolution Media
Los Angeles



Diana Aizman
Founder
Aizman Law Firm, APC
Encino

Marcia Allen

President
First Call Staffing Services



Sarah Anderson
Chief Creative Officer, Executive
Creative Director
Omelet
Culver City

Sharon Armstrong

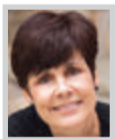
Executive Recruiter & Career Strategist
Todd Team Coaching
Pasadena



Luanne Arredondo
CEO
LA Business Consultants, LLC
West Covina

Jarrett Arthur

Founder
M.A.M.A. Self Defense



Kathleen Ash
Executive Director
Catholic Education Foundation
Los Angeles



Heather Askinosie
Founder
Energy Muse Jewelry, Inc.
Torrance



Nicole Audette
Senior Vice President - Management
Services
Transwestern
Los Angeles

Kumari Bakhru

Director, Strategic Planning
Walt Disney Studios Motion Pictures
Burbank



Sara Bamossy
Chief Strategy Officer
Pitch
Culver City



Roxanne Banks
Founder & President
Roxanne Banks Speaks

Varda Bar-Kar

Director
Ravensong
Santa Monica



Natalie Bazarevitsch
Senior Vice President
CBRE
Universal City



Yasmin Beers
Assistant City Manager
City of Glendale
Glendale

Juls Bindi

Zugo Pet
Los Angeles



Devon Blaine
Founder, President and CEO
The Blaine Group, Inc.
Beverly Hills

Monica Blanco

CEO/President/Trainer/Expert
Colour Couture airbrush tan products/services
Glendale

Nina Yang Bongiovi

Principal
Significant Productions
Burbank



Karie Boyd
CEO and Attorney
Boyd Law
Los Angeles

Laura Jean Bracken

President/COO
Palisades MediaGroup
Santa Monica



Tiffany Bradshaw
Small Business Risk Education Team
VEDC
Sherman Oaks

Kyla Brennan

CEO
HelloSociety
Santa Monica

Brianna Brown

Founder & President
The New Hollywood .org
Los Angeles

Lynne Brown

Owner
TRIO Worldwide
Burbank



Charisse Browner
Business Development Director
America's Charities
Los Angeles



Laurie Brucker
CEO
LaurieBStyle
Los Angeles



Cathleen Bucholtz
Managing Director
True Partners Consulting LLC
Los Angeles



Ellen Callen
CEO
Via E, Inc.
San Clemente

Wendy Camacho

Director of Marketing
Whole Foods
Sherman Oaks



Antonia Carlotta
CEO
The Laemmle Company
Beverly Hills



**THE BEST
PLACE IN
L.A. TO SEE
STARS**

WE S RISE

This is where individuals rise
and through them we all do.

See how CSUN graduates impact
the region at CSUN.EDU/RISE

CSUN

CALIFORNIA
STATE UNIVERSITY
NORTHRIDGE

WOMEN MAKING A DIFFERENCE 2015

NOMINEES

Alexis Carra

Actor, Director, Producer
Sweet Carraty Corp.
Los Angeles

**Sarah Ceglarski**

Senior Director, Marketing
Omelet
Culver City

Maggie Cervantes

Executive Director
New Economics for Women
Los Angeles

**Amy Clites****Erin Condren**

Founder and Creative Director
Erin Condren
Hawthorne

**Dame Sandra Costa**

Founder
Sandra Costa Design Group
Los Angeles

**Martha Cotton**

Director
Finally Films
Los Angeles

Erin Cottrell

Actor / Activist
Erin Cottrell
Los Angeles

**Charlotte Crivelli**

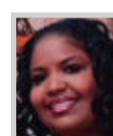
Co-Founder
Klick Communications
Venice

**Elouise Dangerfield**

Founder
Dangerfield Institute of Urban Problems
Los Angeles

**Liz Davidson**

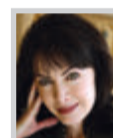
Founder and CEO
Financial Finesse
El Segundo

**Debra Day**

Founder
Women Inspiring Women
Long Beach

**Pina De Rosa**

Owner/TEDxSpeaker/Mindset
Effectiveness Expert
Gratitude International LLC
Los Angeles

**Michelle DeAngelis**

Founder President CEO
Michelle Inc.
Santa Monica

Dina Demetrius

Television Journalist
Los Angeles

People on the Move

Hirings, awards, promotions and
special accomplishments in local business

Welcome Joe Boskovich, Jr.!

**NONPROFIT****Joe Boskovich, Jr.**

Chair of the Board
Catholic Big Brothers Big Sisters

Many changes are taking place at Catholic Big Brothers Big Sisters. Joe Boskovich, Jr., Old West Investment Management, has been elected Chair of the Board.

Serving on the Executive Committee are: Lewis Horne, CBRE, and Tammy Funasaki, Evolution Capital Management, as Co-Vice-Chairs; Rolf Donath, EliteCom, Secretary; Ken Michaels, PricewaterhouseCoopers, Treasurer; John Byrnes, JL Byrnes & Co., Past Chair; and Kathryn Gorsch, PCCP LLC, and Evan Moran, Jones Lang LaSalle, as Jr. Partners Co-Chairs. Also, Dr. Kim Elaine Rathman has joined the agency as Chief Development Officer.

Boskovich

Congratulations Jennifer McLean!

**BUSINESS STRATEGY****Jennifer McLean**

CEO
McLean MasterWorks

Jennifer McLean is honored to be a nominee for The Los Angeles Business Journal's Women Making a Difference Awards. She has a 27-year business strategy career in Corporate America, including the launch of Yahoo! Canada in 1995.

After creating hundreds of multi-millionaires through her Credibility Branding System, she left corporate America in 2008 and launched her company, McLean MasterWorks, a multimillion-dollar organization in the human potential movement. In her newest program, Success Signature, Jennifer blends healing and business savvy to accelerate entrepreneurs into major success. Download your free eBook at successsignature.com.

McLean

Contact Rosz Murray • 323.549.5225 ext. 215
rmurray@socalbusinessjournals.com

People on the Move

Welcome Penny Griego!



Griego

PUBLIC RELATIONS

Penny Griego
Consultant
 Arlene Howard Public Relations

Penny Griego has joined Arlene Howard Public Relations (AHPR, Inc). With 30 + years in Broadcast Journalism, working in both television and radio, Penny will be a consultant at AHPR. Penny worked in television news as an anchor/reporter in Los Angeles (KCBS-TV 2), Denver (KCNC - TV 4) and Albuquerque (KGGM-TV 13). Most recently, Penny was the anchor of a 4-hour morning-drive newscast at KFWB radio in Los Angeles.

penny@arlenehowardpr.com



Welcome SteelWave!



DiRaimondo

REAL ESTATE

Barry DiRaimondo
CEO
 SteelWave

Legacy Partners Commercial LLC, formerly the commercial division of San Francisco Bay Area-based Legacy Partners, a full-service real estate investment management company, announced today their new brand SteelWave. "The new SteelWave brand opens a significant new chapter for us and it comes at an opportune time as our core markets - West and Southwest - are expanding and providing plenty of solid investment opportunities," said Barry DiRaimondo, former Legacy Partners Commercial CEO and now SteelWave CEO.



Welcome Inner Space Staff!

CONSTRUCTION

Keith Taylor and Rob Kaneko
 KPRS Construction

KPRS Construction welcomes Keith Taylor and Rob Kaneko, along with other team members from Los Angeles-based Inner Space Constructors. Keith as Senior Project Manager, Rob as Project Manager, and their team bring over 30 years' experience in the industry. KPRS is proud to continue supporting the needs of our clients.



Taylor



Kaneko



Welcome Judith Deutsch!



Deutsch



NONPROFIT

Judith S. Deutsch
Director of Development
 Young Musicians Foundation

Ms. Deutsch has a 30-year history of fundraising, including positions with UCLA and City of Hope. She was recently the principal of JSD Consulting. Ms. Deutsch holds a B.A. in Art History from UCLA and an M.A. in Education from the College of William & Mary. She is involved in community service and serves on eight boards of directors.

Congratulations Julie Du Brow!



Du Brow



PR/MARKETING

Julie Du Brow
Principal
 dubroWORKS

Julie Du Brow is honored to be a nominee for The Los Angeles Business Journal's Women Making a Difference Awards, along with many other notable LA leaders. Employing a holistic PR / Marketing perspective to advance and connect clients in sustainability, the environment, architecture/design, the arts and nonprofits is her path to improving her native Los Angeles. (www.dubroworks.com)

Congratulations Susan Woller!



Woller



DESIGN & ARCHITECTURE

Susan Woller
Principal of Interior Design
 Kamus + Keller Interiors | Architecture

As Principal of Interior Design at Kamus + Keller Interiors | Architecture, a leading Southern California commercial design firm, 30-year industry expert Susan Woller heads up KKIA's newly established Downtown LA office and oversees the superior design initiatives firm-wide. Her most recent design work with worldwide humanitarian organization World Vision International was recognized at this year's prestigious IIDA Calibre Awards.

Welcome David M. Reeder!



Reeder

LAW

David M. Reeder
Attorney
 Valensi Rose, PLC

David M. Reeder has joined Valensi Rose, PLC. With over twenty-five years of experience in bankruptcy law, Reeder's focus is on business reorganizations, bankruptcy litigation, loan workouts, bankruptcy trustee representation, and the purchase of distressed assets. Century City-based Valensi Rose serves clients in the areas of Banking and Creditor's Rights, Business, Entertainment, Family Law, Litigation, Real Estate, and Tax and Wealth.

Contact Rosz Murray • 323.549.5225 ext. 215
 rmurray@socalbusinessjournals.com

WOMEN MAKING A DIFFERENCE 2015

NOMINEES



Madeline Di Nonno
CEO
Geena David Institute on Gender in
Media
Los Angeles

Dorene Dominguez
Board Chairwoman
Vanir Group of Companies
Los Angeles



Desiree Doubrox
Founder/CEO
An Empowered Woman
Westlake Village

Julie DuBrow
DuBroworks
Marina Del Rey



Amanda Elder
Manager
CohnReznick
Los Angeles



Pam Elliott
Founder / CEO
Pam Elliott Productions
Los Angeles

Laura Emanuel
Founder
The Freshman Foundation
Los Angeles



Barbara Emmons
Vice Chairmen
CBRE
Los Angeles

Cloud Ettinger
President
Red Cloud LLC
Los Angeles



Kimberly Frelow
Small Business Manager
Los Angeles Unified School District
Los Angeles



Shannon Gabor
Founder & Chief Executive Officer
Clever Creative
Venice



Nancy Gale
Founder, CEO, and Designer
Jamah (company) and Ambition (Non-
profit)
Los Angeles



Yesenia Gallegos
Partner
Fox Rothschild LLP
Los Angeles



Dora Leong Gallo
CEO
A Community of Friends
Los Angeles



Lisa Garr
Radio Host
The Aware Show
Los Angeles

Tamar Gellar
Dog Coach
The Loved Dog
Los Angeles



Brie Gennusa
COO
Savesorb
Gardena

Elana Pianko Ginsburg
National Women's History Museum
Los Angeles

Laetitia Goethals
Los Angeles



Stacey A. Gordon
Executive Recruiter & Career Strategist
Career Incubator
Torrance

Courtney Nichols Gould
Co-Founder / Co-CEO
SmartyPants Vitamins
Marina Del Rey



Roberta Guerrero
Vice President, Project Management
DTZ
Los Angeles



Terri A. Haack
President
Terranea Resort
Rancho Palos Verdes



Madelyn Hammond
CEO
Madelyn Hammond & Associates
Beverly Hills



Georgina Harris
Manager
CohnReznick
Los Angeles



Jessica Hawthorne-Castro
CEO, Chairman
Hawthorne Direct
Los Angeles

Elana Joelle Hendler
Founder
EJH Brand
Los Angeles

Leah Hendrex
Senior Wardrobe Advisor



Sybil Henry
Brand Style Strategist
The Style Concierge
Marina Del Rey



Evelyn Herrera
CEO
The Vendors Closet/The Vendor Botique
Spot
Hesperia



Dawn Higginbotham
Producer / Line Producer /UPM
Cordova Pictures
Studio City



Rosemary Hilb
CEO
The Laemmle Company
Beverly Hills



Congratulations

JULIA STEWART

on winning the
*Los Angeles
Business Journal*
Women Making
a Difference Award



DineEquity® could not be prouder of its CEO & salutes all the winners who make L.A. such a great city!

© 2015 DineEquity, Inc.

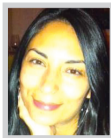
Great franchisees. Great brands.®

dineEquity®



WOMEN MAKING A DIFFERENCE 2015

NOMINEES

**Maribel Hines**

Vice President, Learning & Organization
Universal Music Group
Santa Monica

Taryn Hipwell

Producer & EcoDiva & Creator
EcoDivasTV
Los Angeles

Kathy Hoffman

Founder
Hoffman Sites
Los Angeles

**Linda Hollander**

Owner
Sponsor Concierge
Marina Del Rey

**Cathy Hyodo**

Partner
Grant Thornton LLP
Los Angeles

Jennifer J.

Business Owner & Celebrity Hair Colorist
Jennifer J. Beauty
Beverly Hills

**Ronda Jackson**

CEO
Décor Interior Design
Los Angeles

**Gail Jackson, M.D.**

Physician
Medical Office of Gail N. Jackson M.D.
Santa Monica

**Timmi Jandro**

Founder
Energy Muse Jewelry, Inc.
Torrance

**Coleen Janeway**

Founder
Epithereal Skincare
Marina Del Rey

Sally Jenkins

Founder President CEO
Sally Jenkins
Sherman Oaks

**Michele Kauffman**

Executive Director
Cushman & Wakefield
Los Angeles

**Ariel Kaye**

Founder and CEO
Parachute
Venice

**Kelly Kepner**

Owner
Kelly Kepner PR
South Pasadena

**Tanya Kersey**

Founder & Executive Director
Hollywood Black Film Festival
Beverly Hills

Law Offices of Vicki J. Greene

A boutique firm focusing on complex and high net worth family law litigation and appeals.

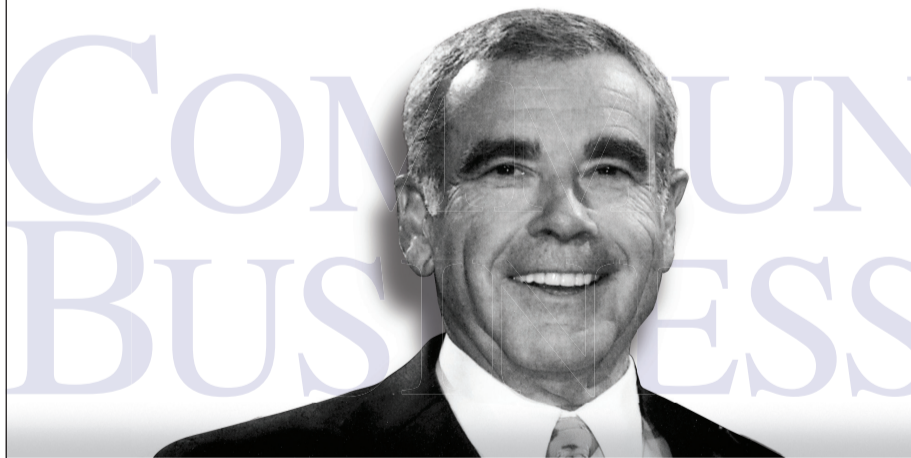
Senior member, Vicki J. Greene, has been practicing for 35+ years, is AV-rated by Martindale-Hubbell, is recognized as a 2015 Super Lawyer and is a recurring guest lecturer for NBI. Ms. Greene is experienced, personable, strong, compassionate and solution-oriented.

Representative clients include business owners, corporate executives, real estate investors, investment advisors, accountants, physicians, dentists, actors, writers and musicians. Representative cases include valuation and division of closely-held stock, real estate holdings, business interests, tracing separate and community assets or income, spousal and child support and child custody.



1900 Avenue of the Stars, 25th Floor • Los Angeles, California 90067
310.282.8302 • 310.282.8314 (Fax) • vicki@vjgamlaw.com

THE COMMUNITY OF BUSINESS™



Ed Roski, Jr.
Majestic
Realty

“A dose of **The LA Business Journal** is the way to stay on top of economic news, financing and local and global events. In today’s business, this is a must!”

Leadership isn't just given, it's earned.



Camilla Eng

Executive Vice President of Sales and Marketing and General Counsel

2015 Executive of the Year

JM Eagle is very proud and honored to congratulate our colleague and friend, Camilla Eng, recipient of the Los Angeles Business Journal, 2015 Women Making A Difference, Executive of the Year.



*Building essentials
for a better tomorrow™*

WOMEN MAKING A DIFFERENCE 2015

NOMINEES

Jennifer Kim

Senior Partner
Signature Estate Investment Advisors, LLC
Los Angeles

Dina Kimmel

Founder and CEO
We Rock the Spectrum Kid's Gym
Tarzana

**D'nae Kingsley**

Head of Integrater Strategy
Trailer Park
Los Angeles

**Kia Kiso**

Producer/ Line Producer / UPM
ZazaProductions
Venice

**Elpida Kokkota Harner**

Founder & CEO
MeXOXO
Dana Point

**Jessikah Kollatou**

Owner
Hypnotherapy LA
Culver City

**Danielle Lackey**

President & CEO
CandenceCounsel, Inc.
Santa Monica

Adriana LaCorte

Director of Photography - Director
Bellamica Pictures
Hollywood

**Davida Lampkin Tydings**

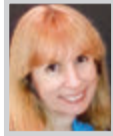
Owner
Davida Aprons & Logo Programs, Inc.
Vernon

**Margret Rose Lanam**

Administrator
Angeles Vista Hospice
Los Angeles

Nicole Landers

Marketing Manager
Marquis Beverages
Los Angeles

**Debbie Laskey**

Social Media Brand Strategist
Marketing and More Consulting
Beverly Hills

**Janet Lavender**

Chief Executive Officer & Executive
Director
Well-Suited
North Hollywood

**Jennifer Lazarus**

President
LazBro, Inc.
Los Angeles

**Linda Lee**

Senior Managing Director
Charles Dunn Company
Glendale

**Irene Lee Wyatt**

Principal-in-Charge
FPL and Associates, Inc.
Irvine

**Bobi Leonard**

CEO & Founder
Bobi Leonard Living
Malibu

**Penny Li**

Director of Admissions & Registrar
CIAM
El Monte

**Kristi Ling**

President, Life and Business Coach,
Author
Kristi Ling Coaching
Woodland Hills

**Nanxi Liu**

CEO
Enplug
Culver City

**Darla Longo**

Vice Chairmen
CBRE
Los Angeles

**Laurie Lustig-Bower**

Executive Vice President
CBRE
Los Angeles

**Amanda Ma**

CEO
Innovate Marketing Group, Inc.
Pasadena

**Amy Mackinnon**

Director of Office Services
Team One
Los Angeles

Josie Maran

Chief Eco Officer
Josie Maran Cosmetics
Los Angeles

**Mona Marandy**

Business Owner and COO
Monalisa Limousine Inc.
Los Angeles

**Lisa A. Margulies**

Financial Advisor/Branch Manager
Regatta Capital Group, LLC
Los Angeles

Debbie Martinez

President, CEO
i.b.e entertainment
Long Beach

**Layla Mashayekhi**

Owner
Layla's Electrolysis
West Los Angeles

**Charlotte Mausolf**

Founder
I Am Never Alone
Los Angeles



Small Business. Big Dreams.



As one of the largest minority-owned, publicly traded financial institutions in California, East West Bank has celebrated diversity and equal opportunity for over 40 years. Today, we continue to support female-owned businesses with a personalized approach to relationship banking so you can focus on *making a difference* and becoming an inspiration to us all.

For more information on ways we can help your business thrive, please call **888.245.1756**

www.eastwestbank.com/SBA

 Equal Housing Lender Member FDIC



EAST WEST BANK
Your Financial Bridge[®]

WOMEN MAKING A DIFFERENCE 2015

NOMINEES



Leslie Mayer
Executive Director, Retail Services
Cushman & Wakefield
Los Angeles



Precious Mayes
Chief Strategy Officer
Pacifica Hospital of the Valley
Sun Valley



Diane McGimsey
Partner
Sullivan & Cromwell LLP
Los Angeles



Laura McHolm
CO-Founder & Chief Marketing Officer
NorthStar Moving Company
Chatsworth



Tawnia McKiernan
Director
Makena Productions
Pasadena

Debby McKnight
Trainer
Debby McKnight Training
Los Angeles



Jennifer McLean
CEO
McLean Masterworks
Newport Beach



Debbie Millar
CEO and Owner
ViVI
Tustin



Jan Miyoda
Director, Human Resources
Protiviti
Los Angeles

Donna Mizani
Owner
DSM Design, LLC
Los Angeles



Frances Moreno
Managing Partner
Vaco Los Angeles
Los Angeles



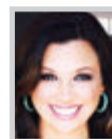
Althea Moses
President/Fitness Director
Althea Moses Health & Fitness Co.
Los Angeles



Ramaa Mosley
Founder
Adolescent
Los Angeles



Susan Munro
President
Hybrid
Marina Del Rey



Keri Murphy
CEO
Inspired Living
Hermosa Beach

DOWNTOWN ALIVE!

CCA | Central City Association
LOS ANGELES

21ST ANNUAL TREASURES OF LOS ANGELES

Presented by
TITLE SPONSOR **AEG**

HOST SPONSOR
Brookfield

PRESENTING SPONSORS
Bank of America, Hazens Group/Jia Yuan USA, Co., System Property Development Company, Inc., Wells Fargo, The Westin Bonaventure Hotel & Suites

SAPPHIRE SPONSORS
The Broad Foundation, Greenland USA/Metropolis, LBA Realty, Los Angeles Dodgers, Los Angeles Downtown News, Rising Realty Partners, University of Southern California

Honoring:

HEART OF THE CITY
Carol E. Schatz President & CEO Central City Association
"Celebrating 25 Years Leading the Downtown Renaissance"

TREASURES OF LOS ANGELES
Stan Lee Chairman Emeritus, Marvel Comics CCO/Founder, POW! Entertainment
"The Real Superhero of the Comics"

HOWARD MARKS Managing Partner, StartEngine, LLC
"Funding the Innovators of Tomorrow"

SPIRIT OF LOS ANGELES
Tom LaBonge Councilmember, CD 4
"Los Angeles' Greatest Booster"

SPECIAL RECOGNITION
Gina Marie Lindsey Executive Director Los Angeles World Airports
"She Made LAX Soar"

With Special Participation by The Honorable Eric Garcetti, Mayor of Los Angeles and Herb J. Wesson, Jr., President, Los Angeles City Council

Thursday, May 14, 2015

Westin Bonaventure Hotel & Suites Reception & Registration | 11 AM
404 S. Figueroa St., Downtown Los Angeles Luncheon & Awards Program | Noon to 2 PM
Parking | \$24 Hotel Valet ◆ \$15 Self-Parking at City National Parking Garage

WOMEN MAKING A DIFFERENCE 2015

NOMINEES



Elizabeth Navarro
Founder & President
Mother Naked
Los Angeles



Janet Neman
Senior Managing Director
Charles Dunn Company, Inc.
Los Angeles



Alyssa Newton
Los Angeles



Laura A. O'Brien
Global Director, Client Care and
Development
CBRE
Los Angeles



Renee O'Connor
Director
ROC Pictures
Rancho Palos Verdes



Monalisa Okojie
Founder
Upward African Woman
Los Angeles



Jessica Olmon
Founder and Managing Attorney
Vero Law Group
Santa Monica



Kelly O'Neil
Lead Managing Director
CBIZ MHM
Los Angeles



Rita-Anne O'Neil
Partner
Sullivan & Cromwell LLP
Los Angeles



Jeanette Ortega
CEO/President/Trainer/Expert
Extreme Results Fitness Gym
Northridge



Sonya Ottaway
President and Director
Netball America & KPMG
Westminster



Juanita Palacios-Sims
Founder and Executive Director
International Society of Black Latinos
Los Angeles



Dana Pallante
Project Manager
Shlemmer Algaze Associates
Iselin



Jessica Pantukh
Marketing Manager
Michelman & Robinson, LLP
Encino



Ashleigh Parsons
Owner / Founder
Alma Restaurant / Alma Community
Outreach
Los Angeles

CBRE SUPPORTS SHATTERPROOF

CBRE is proud to support Shatterproof, a national organization founded to educate, empower and equip families, educators, health care providers, legislators and others to proactively address addiction among children and young adults.

The Shatterproof Challenge in Los Angeles is part of a national rappelling series to help end the stigma associated with addiction. For more information about the challenge on June 11, 2015, please visit: www.rappellosangeles.org

CBRE
 cbre.com

**SHATTER
 PROOF™**
 STRONGER THAN ADDICTION



WOMEN MAKING A DIFFERENCE 2015

NOMINEES



Micaela Bubola Passeri
Inspirational Fashion Designer & Self-Love
Love You Revolution
Marina Del Rey

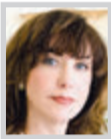


Latasha Perry
Project Director JVS/CPC GAIN Project
JVS Los Angeles
Los Angeles

Meilani Pointdexter
UCLA Trauma Center Nurse
Los Angeles



Kimberly A. Posin
Partner
Latham & Watkins LLP
Los Angeles



Lucy Postolov
Owner
Lucy Postolov Licensed
Acupuncturist/Herbalist
Los Angeles



Carla Ramirez
CEO
Carla Ramirez Insurance Agency Inc.
Manhattan Beach



Lara Regus
Director, Business Development
Abode Communities
Los Angeles



Erica L. Reilley
Partner
Jones Day
Los Angeles



Sarah Shirazi Reznick
CFP
Edward Jones
Newbury Park



Staci Riordan
Partner
Nixon Peabody LLP
Los Angeles

Holly Rockwell
Owner
Rockwell Designs

Eileen Maldonado Rodriguez
CEO/President/ Trainer/Expert
Couture Salon and Spa
Whittier

Maya Ross
Co-Founder
Metal International
Marina Del Rey

Claudia Rovner
Owner
Dave's Flowers
Los Angeles



Sybil Lampkin Rubin
Vice President
David's Aprons / Kosher Kurls
Vernon

CFO

OF THE YEAR

A W A R D S

2015

The Los Angeles Business Journal is proud to announce the 9th Annual CFO of the Year Awards.

This event honors finance professionals in the Los Angeles region for their ongoing efforts as outstanding financial stewards. Given the economic times and ever-changing climate, CFOs serve as essential members of a company's core leadership team. Together with their CEOs, their decisions affect all aspects of the business. Please help us recognize the very best that Los Angeles has to offer.

Nomination Deadline: Wednesday, July 29, 2015

Awards will be presented in the following categories:

- Public Company
- Private Company
- Government/Public Sector
- Non-Profit Organization

For more information, please visit www.labusinessjournal.com/bizevents or contact **Breane Kamai** at **323.549.5225 ext. 203**
bkamai@socalbusinessjournals.com

LOS ANGELES BUSINESS JOURNAL

GET AHEAD ►►

PRESENTING
SPONSOR:



PLATINUM SPONSOR:

MOSS ADAMS LLP
Certified Public Accountants | Business Consultants

WOMEN MAKING A DIFFERENCE 2015

NOMINEES



Michele Ruiz
President and CEO
Ruiz Strategies
Los Angeles



Kamila Saxa
Founder
Interpress Media Group, LLC.
Sherman Oaks



Carol Jean Schary
President-Owner
Nathan Kimmel Company, LLC
Los Angeles

Michelle Schwartz

Founder & Real Estate Agent
The Agency
Beverly Hills



Lorraine Segil
Chief Executive Officer
Little Farm Company
Los Angeles



Lauren Selman
Founder President
Reel Green Media
Los Angeles



Laurie Sewell
President & CEO
Servicon Systems, Inc.
Culver City



Payal Shah
Associate Director
Protiviti
Los Angeles



Margaret Shanley
Principal
CohnReznick
Los Angeles



Brenda Smith
Founder / CEO
Brenda B. Smith Acupuncture
Pasadena



Rosemarie Smith
CEO, Founder
Systems Source, Inc.
Los Angeles



Kara Allen Soldati
Executive Director
CoachArt
Los Angeles



“We don’t get up
in the morning
and think about
how we should
structure our debt.

That’s what our
bank does for us.”

-Larry Campbell, Suhr Guitars
Director of Corporate Strategy

Suhr

Learn what we can do
for you at awbank.net

 **AmericanWest Bank**
We’re banking on the businesses.

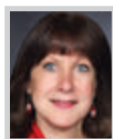
Call us in Los Angeles at 323.935.6132
or visit us at any of our 9 area locations.

Member FDIC. Equal Housing Lender. 

WOMEN MAKING A DIFFERENCE 2015

NOMINEES

Kim Somers-Egelsee
Speaker Best Selling Author
Kim Life Coach



Penny Spark
President
Slate Ltd.
Woodland Hills



Kirsty Spraggon
Director
Konnection Global
Los Angeles



Andrea Stalker
Sr. Associate
Steinberg
Los Angeles



Kimberly Roberts Stepp
Senior Managing Director
Charles Dunn Company
Los Angeles



Endyia Kinnes Sterns
VP of Programming & Development
OWN
Los Angeles



Beatriz Olvera Stotzer
CEO
NewCapital, LLC
Los Angeles



Carmen Suero, LEED AP BD+C
Senior Designer
HNTB Corporation
Los Angeles



Ana Tagvoryan
Partner
Blank Rome LLP
Los Angeles



Shala Tavakoli
Small Business Risk Education Team
Travelers
Irvine



Jennifer Taylor
Managing Principal & Founder
Atalanta Realty Investments
Pasadena



Annie Tedesco
Los Angeles



Crystal Thomas
Principal
Crystal Clear Concepts
Porter Ranch



Emilee Todhunter
Partner/Media Director
RxF Media
Tarzana



Terri Toennies
Executive Vice President and General
Manager
ANSA Productions, Inc. dba The LA
Auto Show
Los Angeles

CONGRATULATIONS TO THE 2015 NOMINEES

We are proud to support the
Los Angeles Business Journal
in celebrating Women Making
a Difference.



Scout 22 is a socially responsible, full-service marketing agency dedicated to connecting compassionate companies with customers through innovative marketing strategies.

scout22.com | (818) 216-9122

WOMEN MAKING A DIFFERENCE 2015

NOMINEES



Maja Trochimczyk, Ph.D.
Senior Director of Planning and
Research
Phoenix Houses of CA
Lake View Terrace



Natalie Tronkina
Director
CohnReznick
Los Angeles



Jennie Lew Tugend
CEO / Producer
Jennie Lew Tugend
Los Feliz



Laurel Ulrich
Brokerage Leader West
Aon Risk Solutions
Los Angeles



Kathryn Valdez
Clinical Account Executive
Counsyl
S. San Francisco

Monica Vallero
Director / Producer
Los Angeles



Marina Viscún
Producer
Pingvin Productions
Los Angeles



Lucie Volotzky
Owner
Beds Unlimited
Canoga Park



Alin Wall
Partner In-Charge, RBZ Family Wealth
Group
RBZ, LLP
Los Angeles



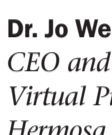
Kristin Walle
VP, Global Money Movement &
Compliance
Automatic Data Processing (ADP)
San Dimas



Donna Washington
Vice President, Operations
FilmL.A., Inc.
Hollywood



Marsel Watts
Small Business Risk Education Team
VEDC
Sherman Oaks



Dr. Jo Webber
CEO and Co-Founder
Virtual Piggy
Hermosa Beach



Panney Wei, C.Ht.
Chief Empowerment Officer
Positive Changes Consulting
Beverly Hills



Trixy Weiss
President and CEO
Genesis Capital, LLC
Woodland Hills



Your employees take control
of their own health plan options.

You take control of
your health care budget.

Feels good when
everyone's in control.



Through Covered California for Small Business, you could be eligible for a tax credit. You set the budget you can afford, your employees choose from a variety of health plans to find the one that's right for them. What a healthy approach to business. **Contact Covered California or a certified agent today.**

(844) 332-8384 | CoveredCA.com/small-business



FOR **SMALL
BUSINESS**

WOMEN MAKING A DIFFERENCE 2015

NOMINEES



Amy Wenslow
CEO
Products To Profits
Pasadena

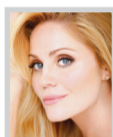


Tamara L. Werkmeister
Associate Vice President
HNTB Corporation
Los Angeles

Valerie Whitlock
Producer / Owner
MadGalaxy Entertainment
North Hollywood



Nancy Wilhite
Managing Director
CBRE
Los Angeles



Virginia Williams
Actor / Writer
Virginia Williams
Sherman Oaks



Jill Wilson
SVP of Games Development
SGN
Beverly Hills



Shannon Wollack
Founder and Designer
LIFE.STYLE.
Beverly Hills



Jennie Wong
Area Chair & Lead Faculty
University of Phoenix
Pasadena



Anna Wu
Office Manager
Castleton Law Group
City of Industry



Elizabeth G. Young, AICP
Associate Vice President
HNTB Corporation
Los Angeles



Margaret Lynn Yonekura, MD
Director of Community Benefit Programs
California Hospital Medical Center
Foundation
Los Angeles



Fatma Yuceler
General Manager Western USA
Turkish Airlines
El Segundo



Emily Yukich
Partner
Fox Rothschild LLP
Los Angeles

Laura Zak
V-Day, Tello Films

Jennifer Zweig
Branch Manager
Robert Half
Los Angeles



*Pictured:
Team Members with
Small Business Risk
Education program
graduates*

Congratulations

**Congratulations to the Travelers/VEDC Small Business Team
on their Women Making a Difference Award Nomination!**



Real Money - Real People - Creating Real Jobs

www.vedc.org