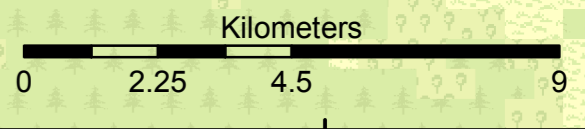
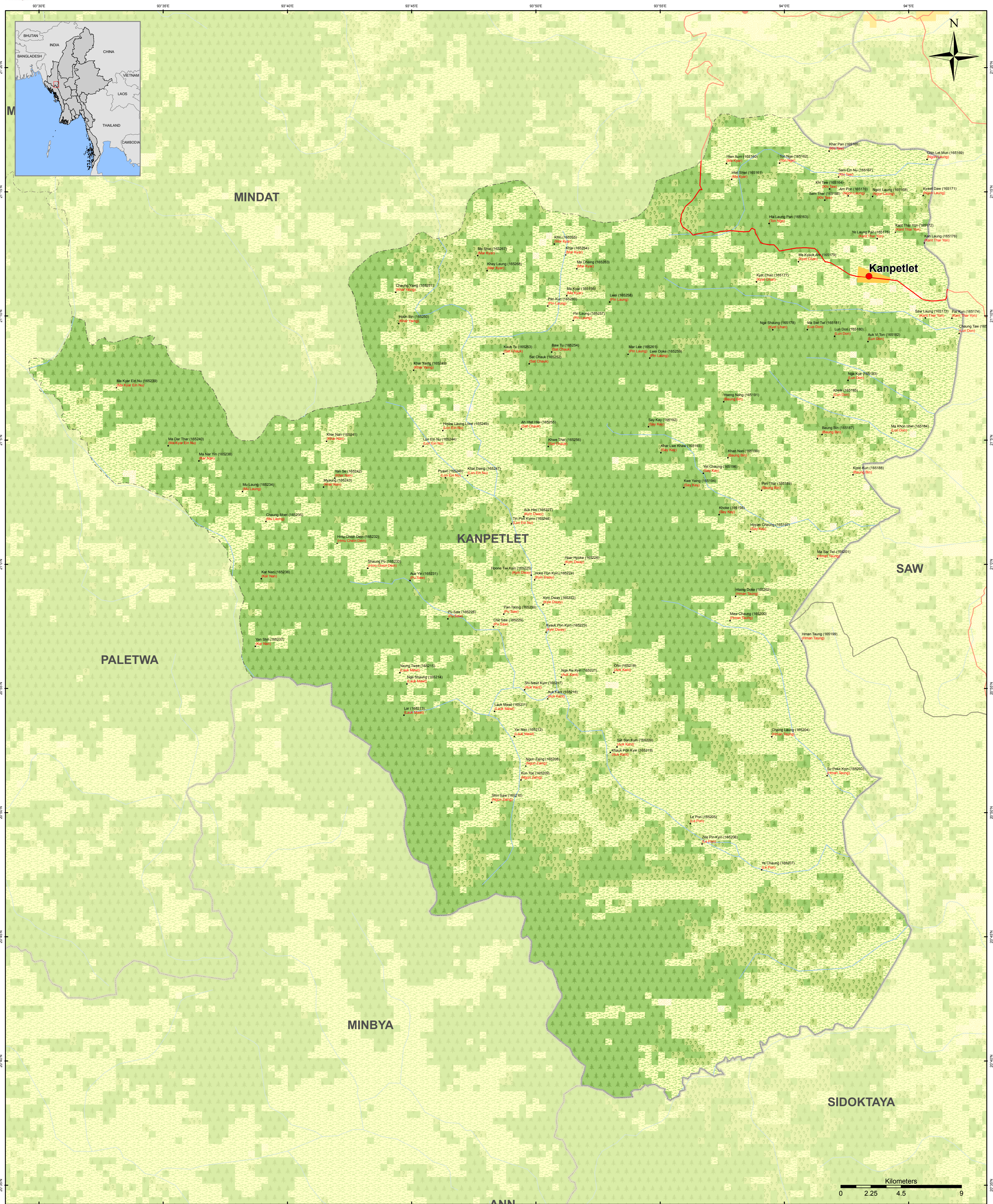


# Kanpetlet Township - Chin State



**Map ID:** MIMU154v04  
**Creation Date:** 3 May 2016,A1  
**Projection/Datum:** Geographic/WGS84

**Data Source:**  
 BASE MAP - MIMU;Boundaries - WFP,modified by MIMU 2008;  
 Landcover - LP DAAC - MCD12Q1 2011 V.5 IGP (Type1)  
 Place name - Ministry of Home Affair (GAD)  
 translated by MIMU

Map produced by the MIMU - E-mail: [info.mimu@undp.org](mailto:info.mimu@undp.org)  
 Website: [www.themimu.info](http://www.themimu.info)

**Legend**

• Village	— Shore
● Town	- - - Township Boundary
— Road	— District Boundary
— Railway	— State Boundary
	— International Boundary
	— Non-Perennial/Intermittent/Fluctuating
	— Perennial/Permanent

**Landcover**

Crop and Vegetation	Snow Ice
Forest	Urban Build-up
Mixed Forest	BareLand
Grassland	Wetland
Shrubland	Water

**Village Name**  
**Ting Kawk (166214)**  
**(Ting Kawk)**  
 Village Tract Name

Myanmar Information Management Unit (MIMU) is a common resource of the Humanitarian Country Team (HCT) providing information management services, including GIS mapping and analysis, to the humanitarian and development actors both inside and outside of Myanmar.

**NOTE :** Due to the limited space of label for Villages, some Village's name will not be appeared on this map.

Copyright © Myanmar Information Management Unit 2016. May be used free of charge with attribution. For more information see <http://www.themimu.info/license>. This notice cannot be modified or removed.

Disclaimer: The names shown and the boundaries used on this map do not imply official endorsement or acceptance by the United Nations.