



**National Survey Results**  
**2020 General Election Likely Voters**  
**Political Environment, Trends & Analysis**

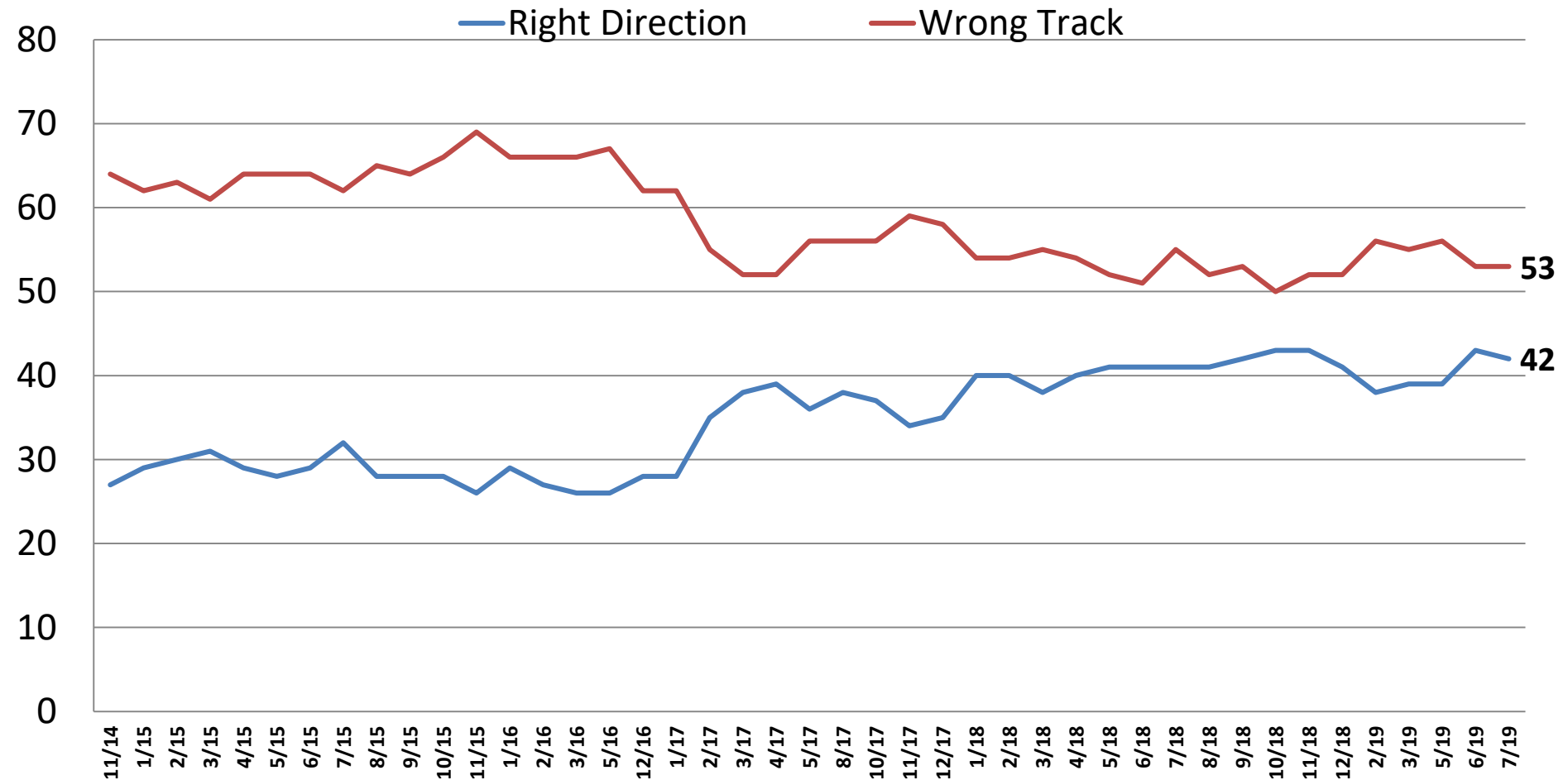
**July 2019**

**On the web**

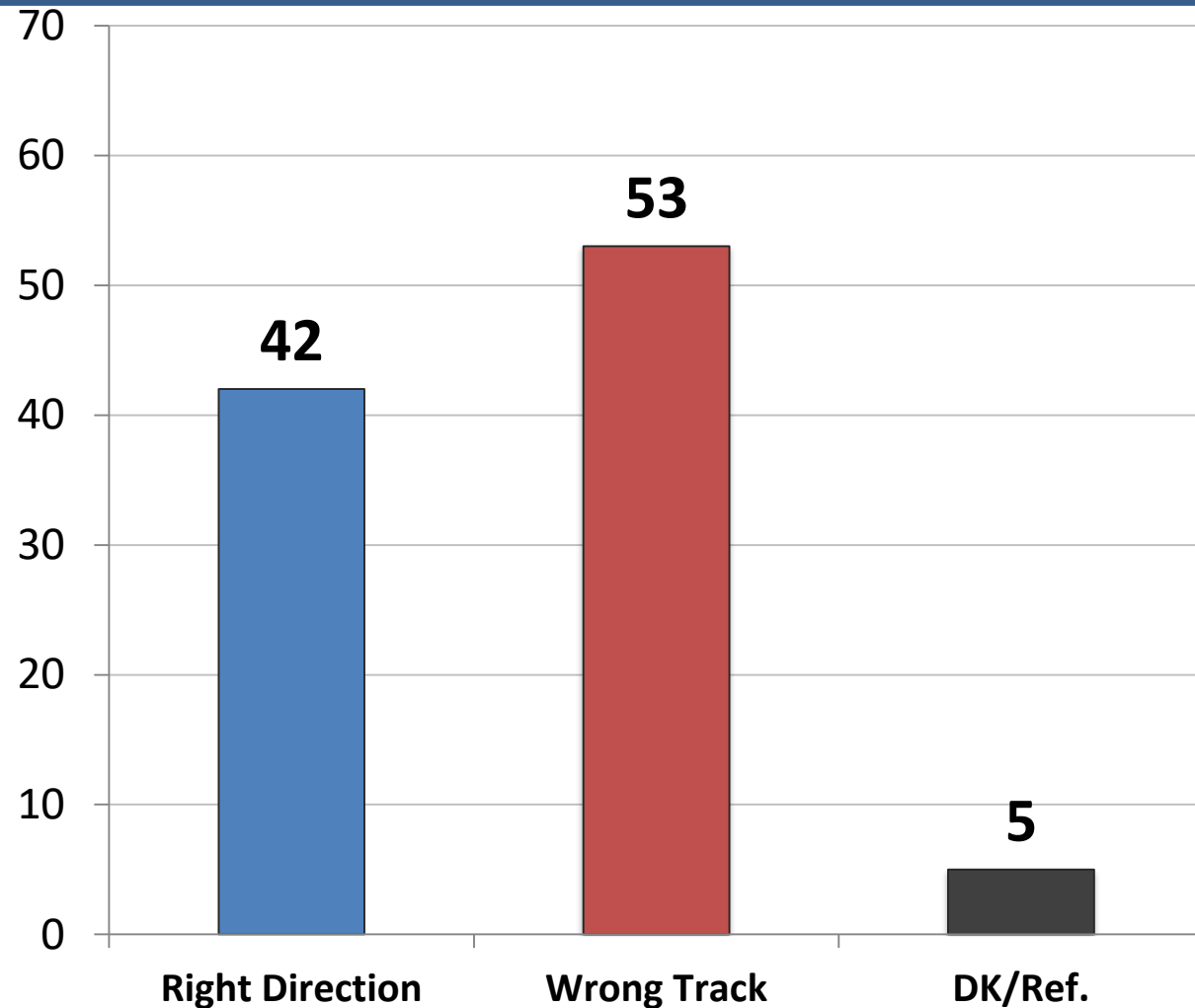
**[www.mclaughlinonline.com](http://www.mclaughlinonline.com)**

# Direction: United States

## *Time Series*

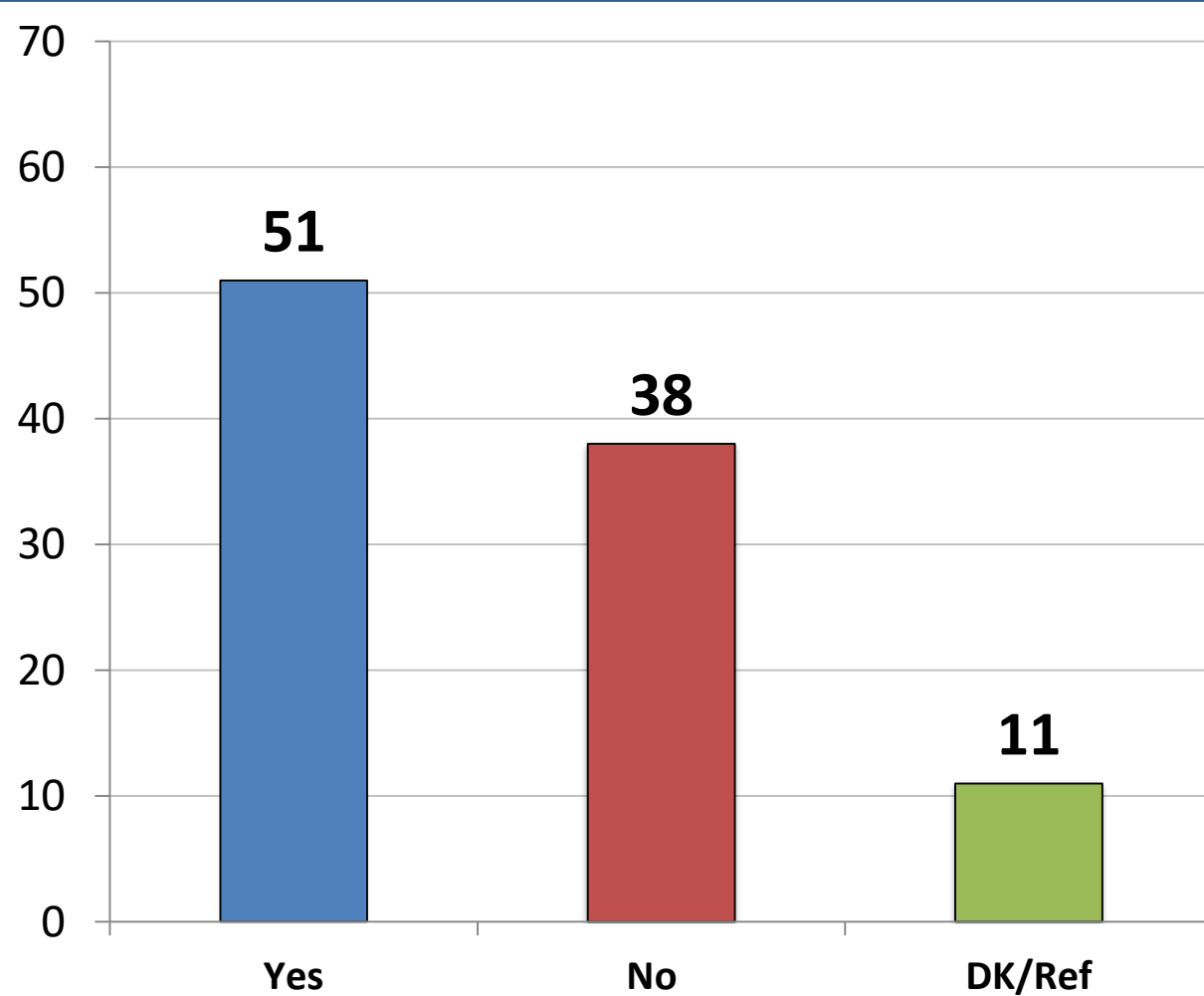


# Direction: *United States*



	<u>R</u>	<u>W</u>
East	41	53
Midwest	41	54
South	43	52
West	41	54
Cont. Trump Pols.	85	12
Change Direction	10	88
Approve – Trump	83	13
Disapprove – Trump	7	89
Favorable – Trump	84	13
Unfavorable– Trump	10	87
Vote Pres. 2016 – Clinton	14	83
Vote Pres. 2016 – Trump	80	16
Vote Cong. 2020 – GOP	78	18
Vote Cong. 2020 – DEM	12	84
Vote Cong. 2020 – UND	24	59
Republican	79	19
Democrat	16	80
Independent	33	59
Liberal	26	72
Moderate	26	64
Conservative	71	26
No College Degree	42	51
College Graduate	42	55
White	48	48
African- American	12	83
Hispanic	42	52
Under 55	40	53
Over 55	45	54
Married	50	44
Single	33	61
Men	50	47
Women	34	59

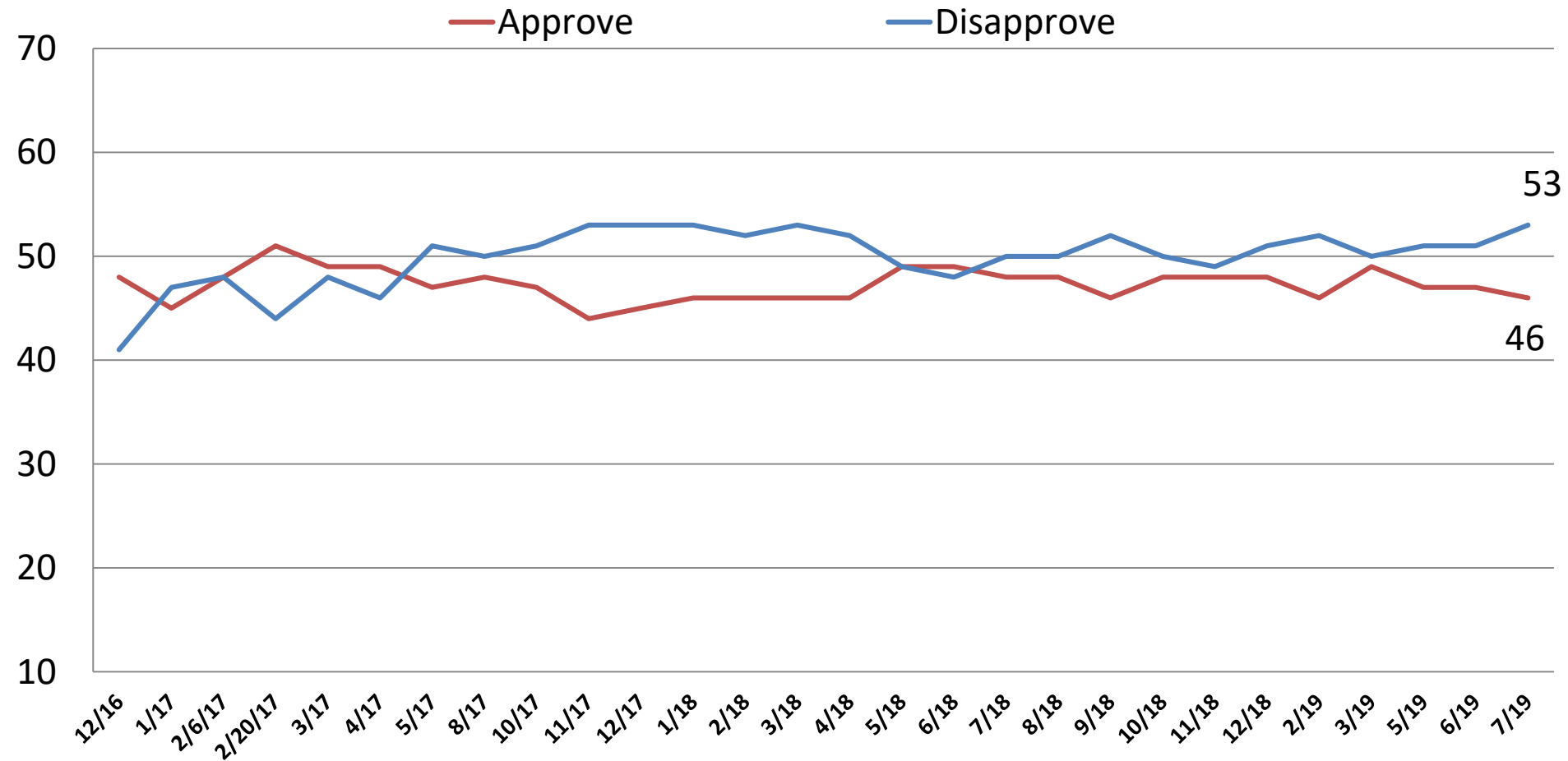
President Trump was elected on a pledge to bring change to Washington. Should President Trump continue to fight to change Washington?



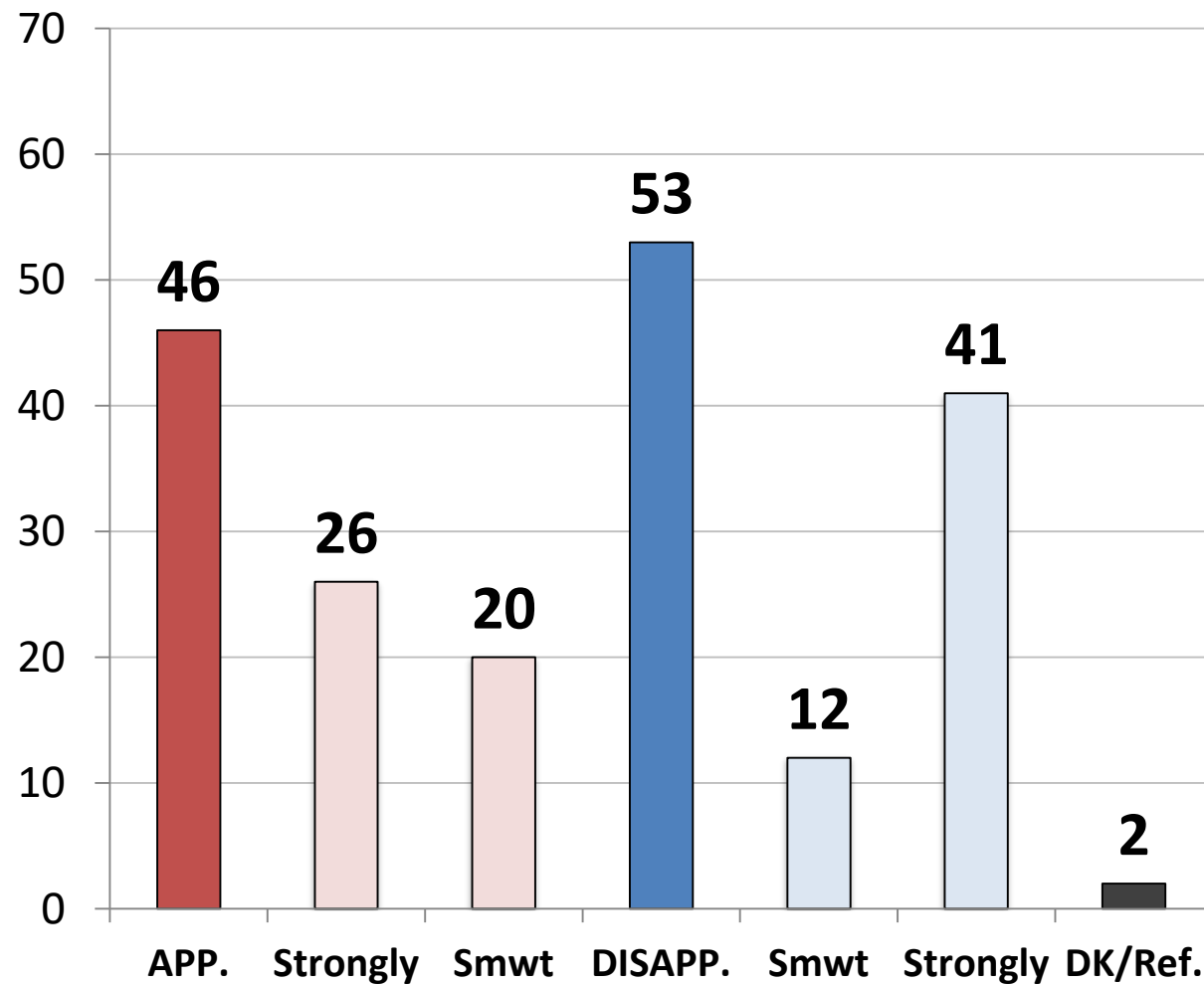
	Yes	No
East	49	41
Midwest	52	36
South	53	37
West	49	39
Cont. Trump Pols.	93	3
Change Direction	17	71
Approve – Trump	91	4
Disapprove – Trump	17	68
Favorable – Trump	90	4
Unfavorable– Trump	20	66
Vote Pres. 2016 – Clinton	18	69
Vote Pres. 2016 – Trump	91	5
Vote Cong. 2020 – GOP	88	7
Vote Cong. 2020 – DEM	19	68
Vote Cong. 2020 – UND	43	29
Republican	87	8
Democrat	21	64
Independent	47	39
Liberal	33	57
Moderate	36	46
Conservative	82	12
No College Degree	52	35
College Graduate	50	40
White	59	31
African- American	17	66
Hispanic	47	44
Under 55	48	40
Over 55	56	34
Married	64	29
Single	38	46
Men	60	33
Women	43	42

# Job Rating: Donald Trump

## *Time Series*



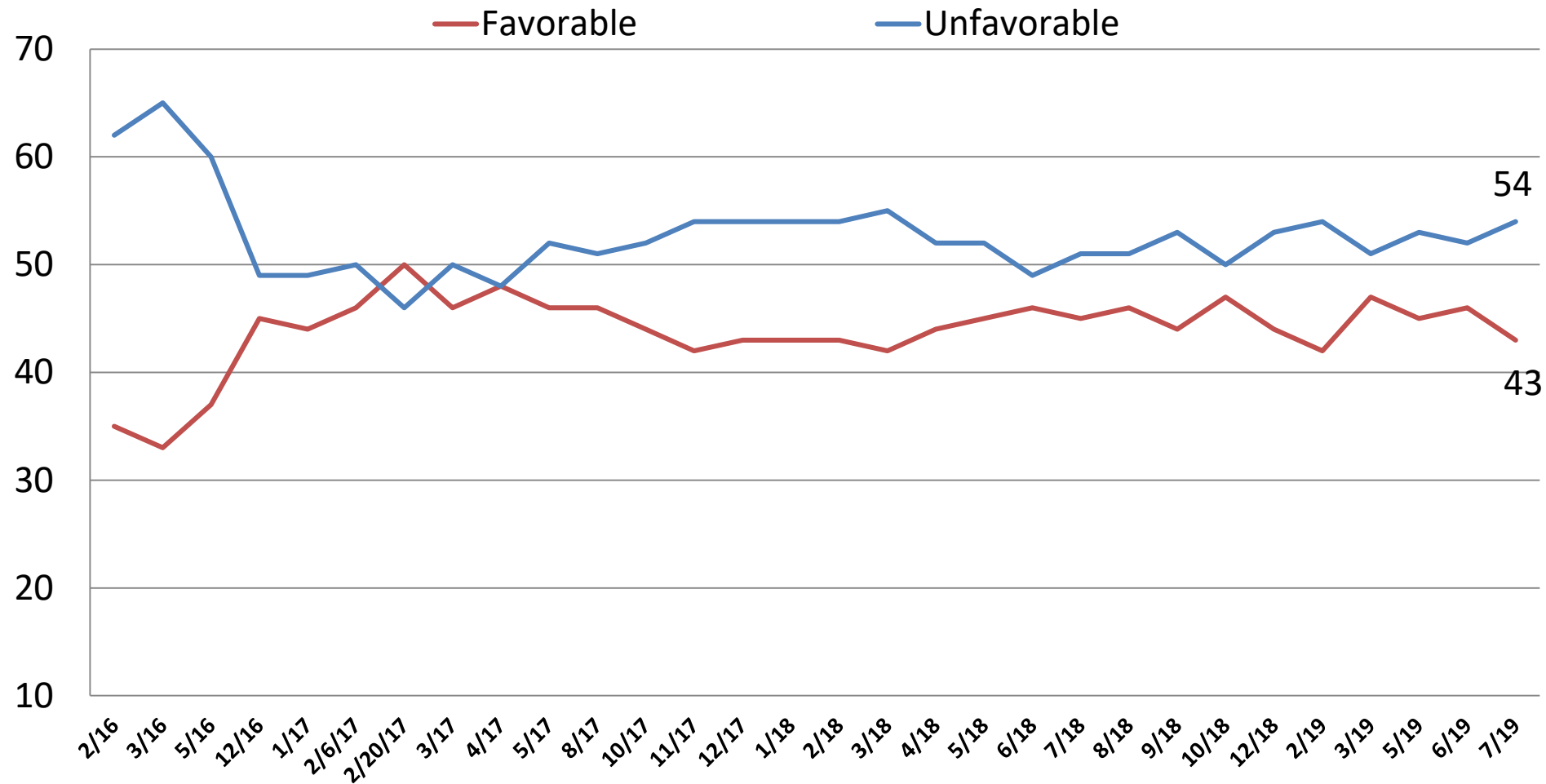
# Job Rating: *Donald Trump*



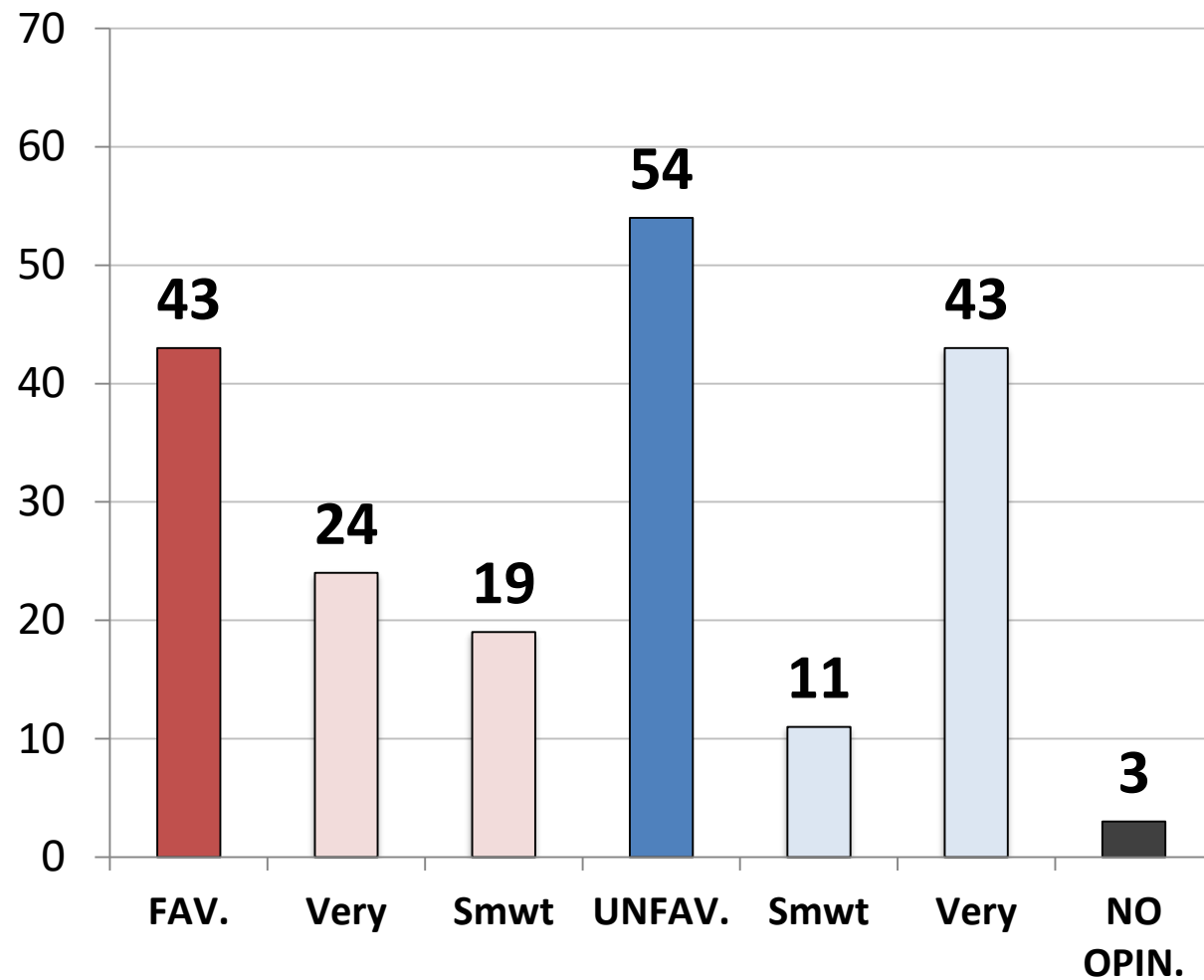
	App.	Disapp.
East	45	54
Midwest	43	55
South	48	50
West	45	54
Cont. Trump Pols.	95	5
Change Direction	7	93
Approve – Trump	100	0
Disapprove – Trump	0	100
Favorable – Trump	96	4
Unfavorable– Trump	6	94
Vote Pres. 2016 – Clinton	8	91
Vote Pres. 2016 – Trump	91	9
Vote Cong. 2020 – GOP	88	12
Vote Cong. 2020 – DEM	10	89
Vote Cong. 2020 – UND	32	58
Republican	87	12
Democrat	13	86
Independent	39	58
Liberal	24	76
Moderate	28	69
Conservative	82	17
No College Degree	47	52
College Graduate	45	54
White	54	45
African- American	9	88
Hispanic	40	57
Under 55	43	55
Over 55	50	50
Married	57	41
Single	33	65
Men	53	47
Women	39	58

# Opinion: Donald Trump

## Time Series



# Opinion: *Donald Trump*

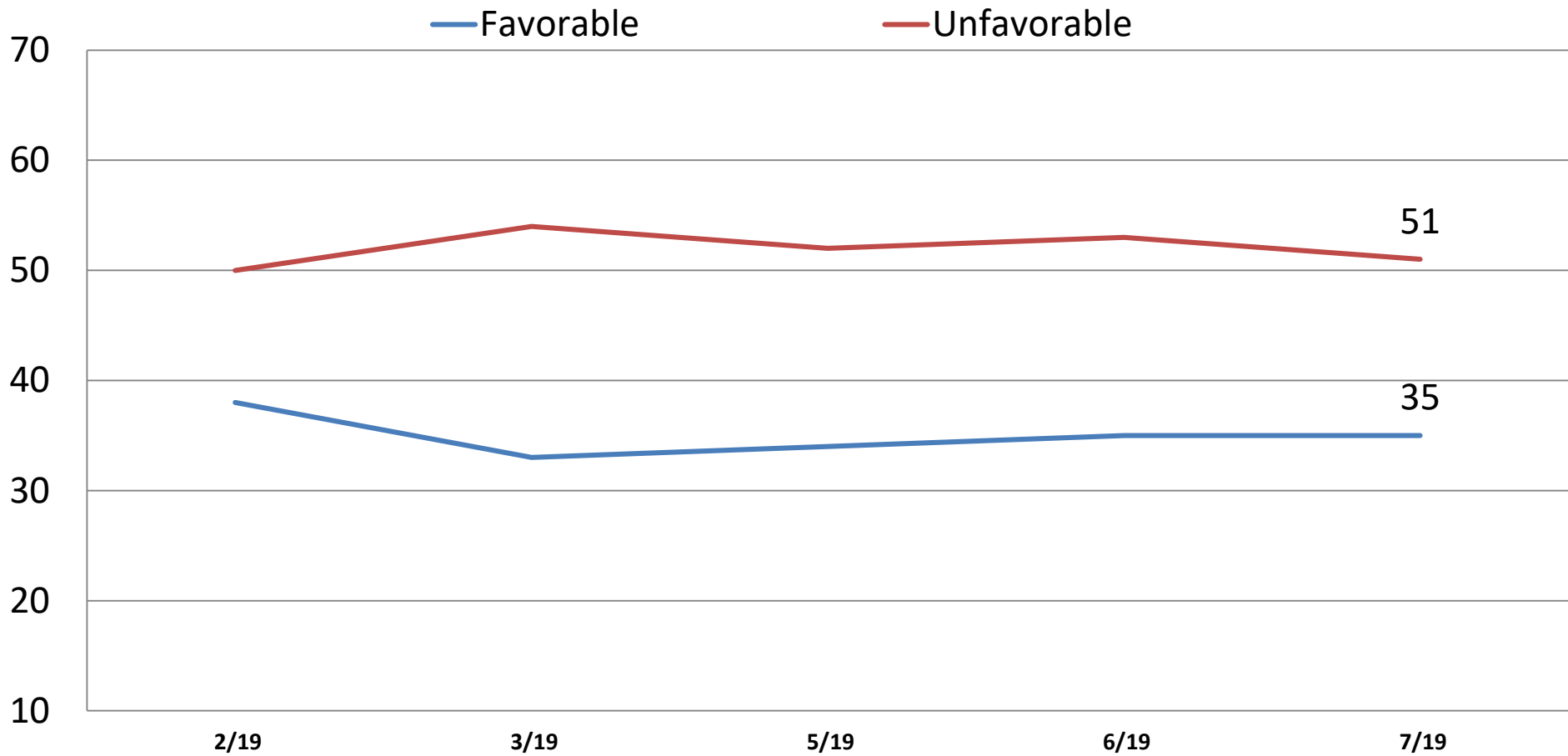


	Fav.	Unfav
East	42	57
Midwest	41	55
South	47	50
West	42	55
Cont. Trump Pols.	91	8
Change Direction	6	93
Approve – Trump	91	7
Disapprove – Trump	3	95
Favorable – Trump	100	0
Unfavorable– Trump	0	100
Vote Pres. 2016 – Clinton	8	90
Vote Pres. 2016 – Trump	89	10
Vote Cong. 2020 – GOP	84	15
Vote Cong. 2020 – DEM	9	89
Vote Cong. 2020 – UND	26	58
Republican	84	14
Democrat	13	84
Independent	34	61
Liberal	23	75
Moderate	25	70
Conservative	79	19
No College Degree	45	52
College Graduate	42	55
White	51	48
African- American	11	81
Hispanic	38	59
Under 55	41	55
Over 55	46	52
Married	53	44
Single	32	64
Men	51	48
Women	37	59

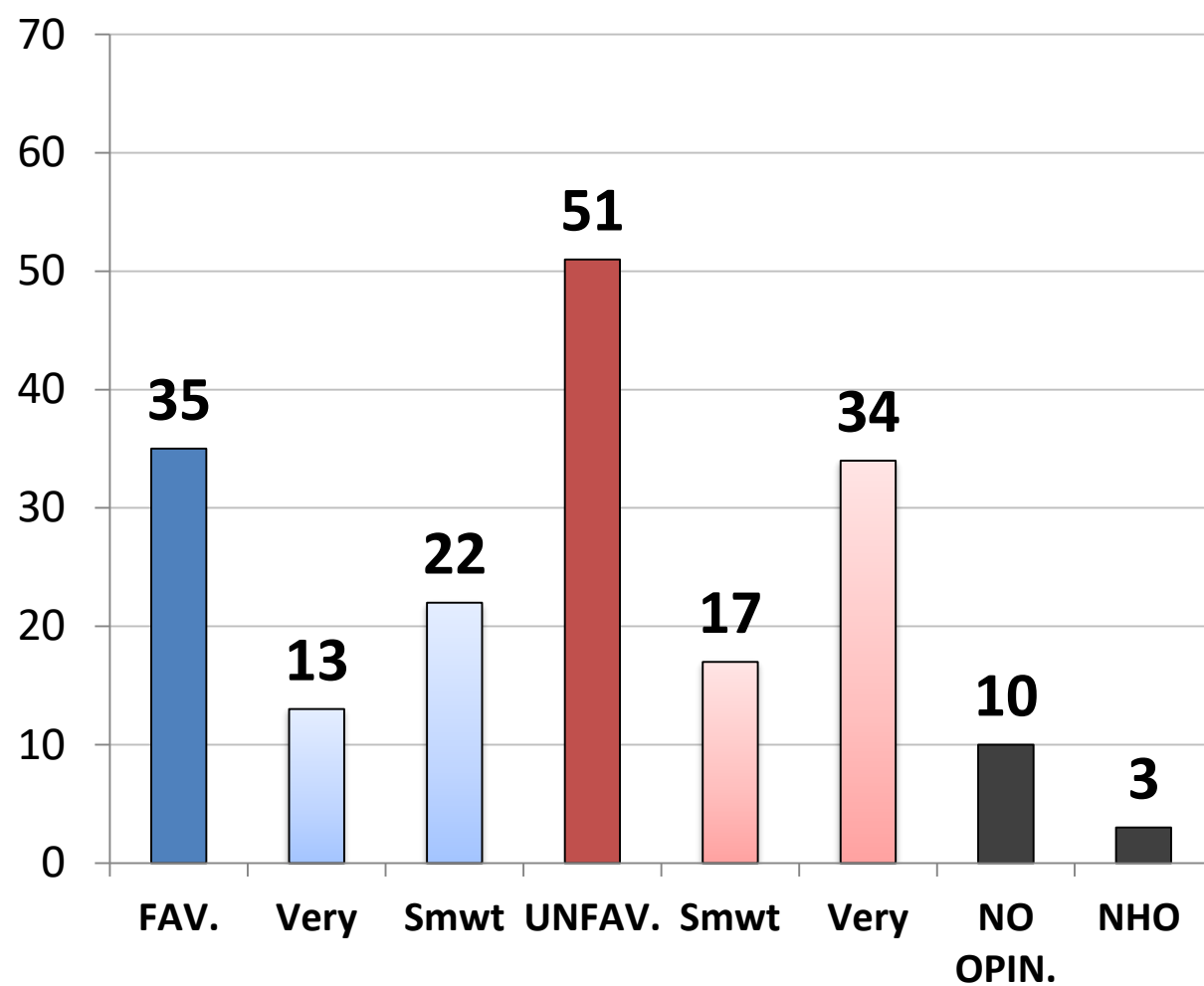


# Opinion: Nancy Pelosi

## *Time Series*



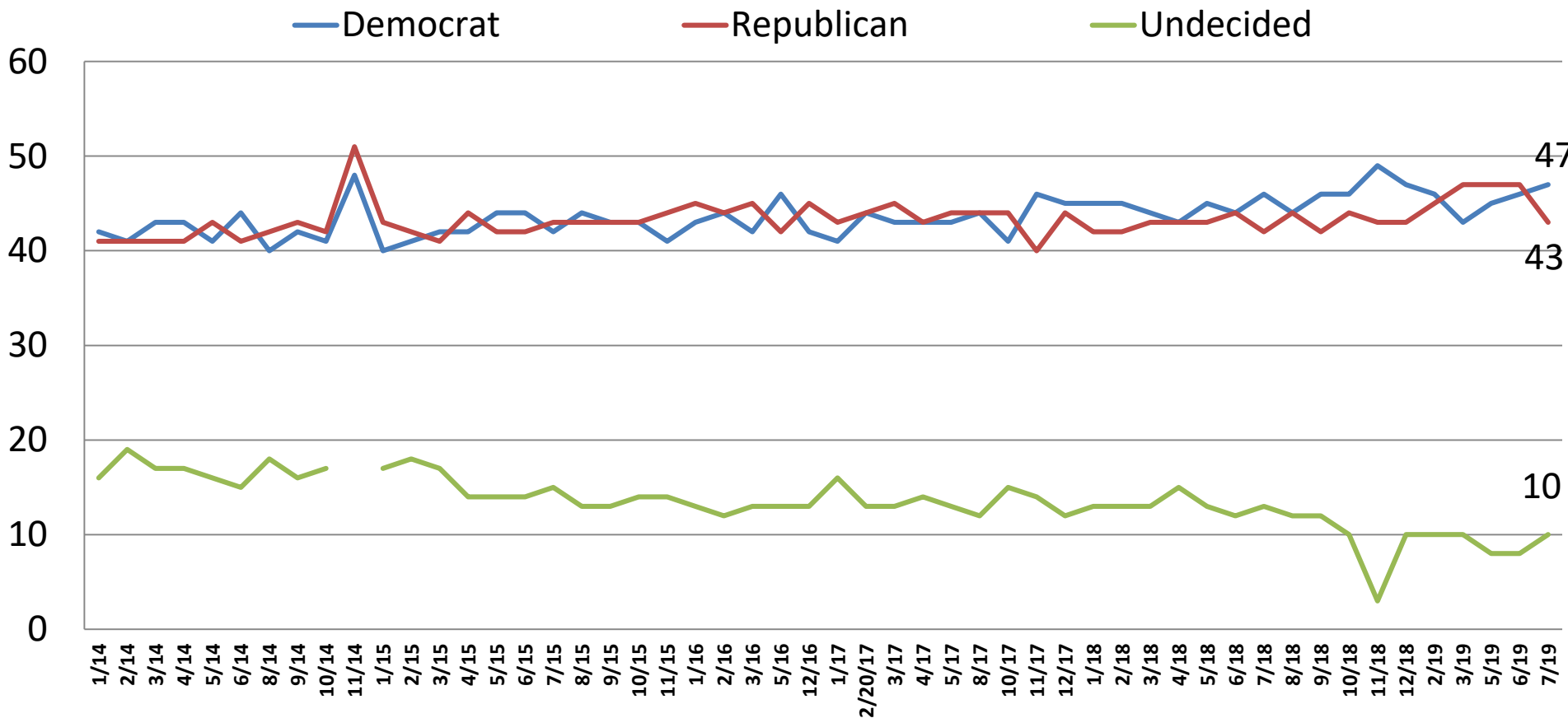
# Opinion: *Nancy Pelosi*



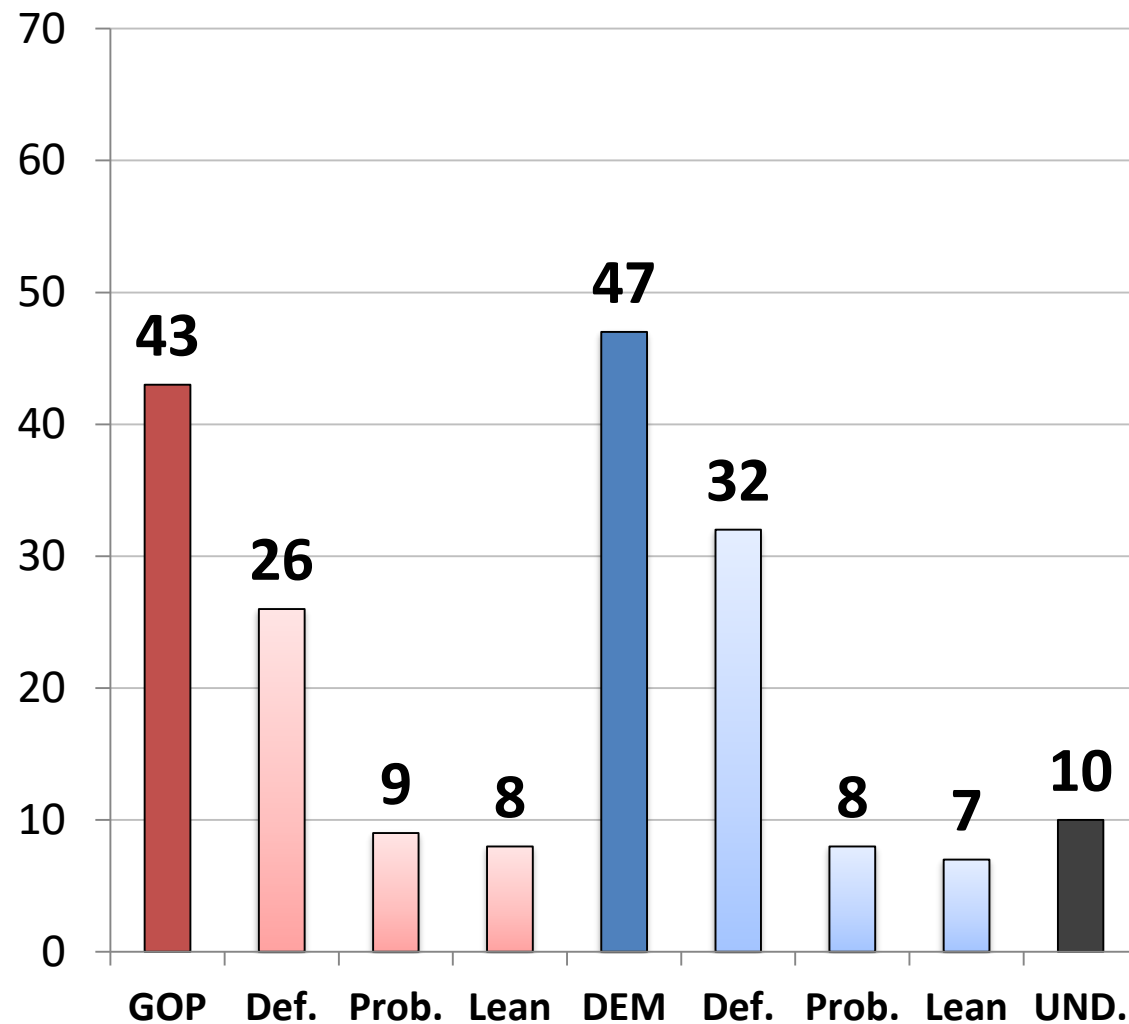
	<u>Fav.</u>	<u>Unfav.</u>
East	47	43
Midwest	30	53
South	31	56
West	38	49
Cont. Trump Pols.	20	74
Change Direction	52	33
Approve – Trump	22	71
Disapprove – Trump	48	35
Favorable – Trump	21	71
Unfavorable– Trump	48	37
Vote Pres. 2016 – Clinton	60	26
Vote Pres. 2016 – Trump	17	75
Vote Cong. 2020 – GOP	18	75
Vote Cong. 2020 – DEM	55	30
Vote Cong. 2020 – UND	16	47
Republican	19	75
Democrat	56	28
Independent	28	53
Liberal	63	26
Moderate	32	48
Conservative	14	77
No College Degree	27	56
College Graduate	44	47
White	31	58
African- American	53	23
Hispanic	40	43
Under 55	36	45
Over 55	34	60
Married	37	55
Single	37	44
Men	39	53
Women	32	50

# Generic Ballot: U.S. Congress

## *Time Series*



# Generic Ballot: *U.S. Congress*



	<u>GOP</u>	<u>DEM.</u>	<u>UND.</u>
East	38	48	14
Midwest	43	45	12
South	47	46	7
West	41	49	10
Cont. Trump Pols.	85	9	6
Change Direction	10	81	9
Approve – Trump	83	10	7
Disapprove – Trump	10	79	11
Favorable – Trump	84	10	6
Unfavorable– Trump	12	77	11
Vote Pres. 2016 – Clinton	7	86	7
Vote Pres. 2016 – Trump	88	6	6
Vote Cong. 2020 – GOP	100	0	0
Vote Cong. 2020 – DEM	0	100	0
Vote Cong. 2020 – UND	0	0	100
Republican	95	2	3
Democrat	5	92	3
Independent	33	42	25
Liberal	17	79	4
Moderate	28	53	19
Conservative	80	13	6
No College Degree	44	43	12
College Graduate	42	50	8
White	52	39	9
African- American	6	80	14
Hispanic	39	51	10
Under 55	39	51	10
Over 55	50	41	9
Married	53	37	9
Single	31	60	9
Men	48	45	7
Women	39	49	13

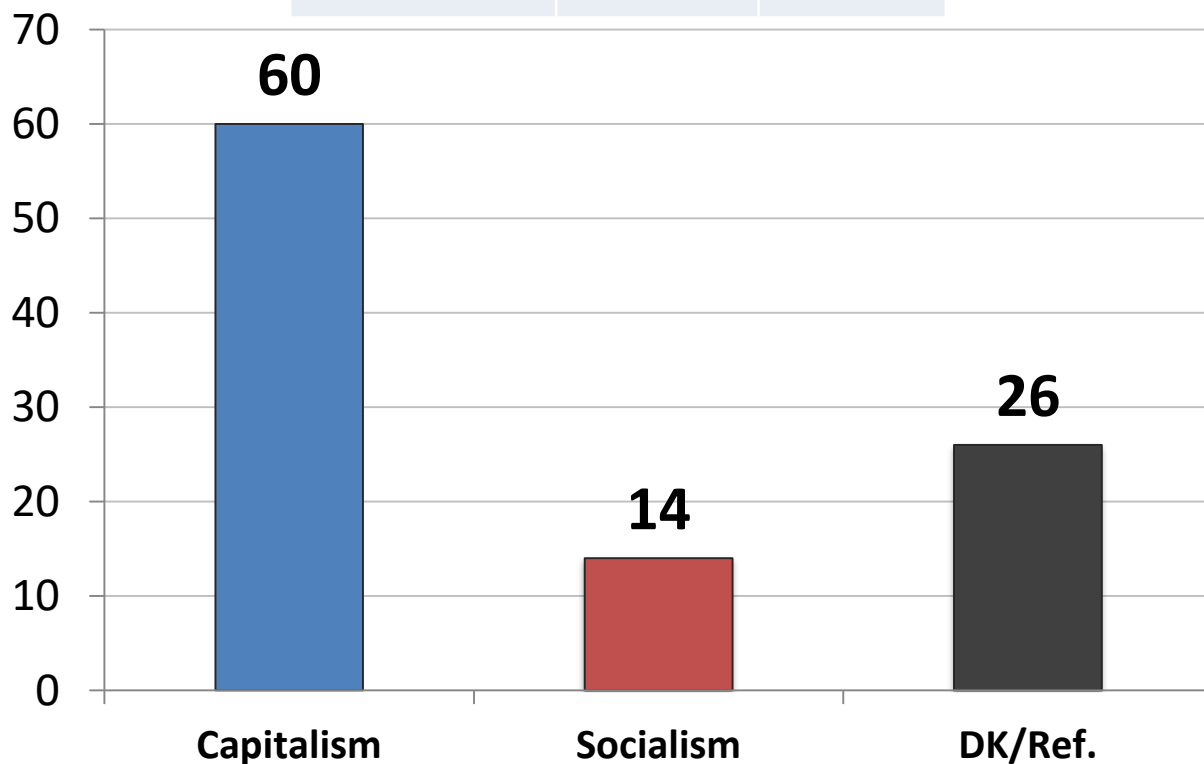
All things being equal, do you prefer:

1. *Free Market Capitalism*

or.

2. *Big Government Socialism*

	6/19	7/19
Capitalism	63	60
Socialism	14	14



	<u>C</u>	<u>S</u>
East	61	15
Midwest	57	15
South	62	11
West	57	18
Cont. Trump Pols.	79	6
Change Direction	46	22
Approve – Trump	76	7
Disapprove – Trump	46	21
Favorable – Trump	76	8
Unfavorable– Trump	48	20
Vote Pres. 2016 – Clinton	47	21
Vote Pres. 2016 – Trump	75	7
Vote Cong. 2020 – GOP	78	7
Vote Cong. 2020 – DEM	46	23
Vote Cong. 2020 – UND	45	6
Republican	77	7
Democrat	42	22
Independent	61	13
Liberal	48	27
Moderate	51	13
Conservative	77	4
No College Degree	55	13
College Graduate	64	15
White	65	12
African- American	35	18
Hispanic	52	19
Under 55	54	19
Over 55	68	8
Married	67	11
Single	52	20
Men	71	15
Women	49	13

# Now, from the following list, which issue is personally most important to you?

	5/18	6/18	8/18	9/18	10/18	12/18	2/19	3/19	5/19	6/19	7/19	Rep	Dem	Ind	Lib	Mod	Cons	App. DJT	Disapp DJT	Men	Wo-Men
<b>ECONOMIC</b>	<b>36</b>	<b>35</b>	<b>35</b>	<b>35</b>	<b>34</b>	<b>33</b>	<b>36</b>	<b>31</b>	<b>32</b>	<b>33</b>	<b>31</b>	<b>31</b>	<b>33</b>	<b>29</b>	<b>32</b>	<b>31</b>	<b>30</b>	<b>32</b>	<b>31</b>	<b>34</b>	<b>28</b>
Improving the Economy	12	11	13	13	12	12	11	10	12	12	12	13	12	12	13	12	11	14	10	14	11
Jobs/Unemployment	9	9	8	8	7	7	8	7	7	8	6	4	9	4	7	6	5	4	8	6	6
Reduce Budget/Deficit	5	6	5	5	5	4	6	5	5	5	6	6	6	6	5	4	8	7	5	7	5
Wasteful Gov't Spending	7	8	7	8	7	8	8	6	6	5	5	5	5	6	5	7	4	4	6	4	6
Hold Line/Taxes	2	2	2	2	2	2	3	3	1	3	2	3	1	1	2	2	3	3	2	3	1
<b>SOCIAL</b>	<b>27</b>	<b>30</b>	<b>27</b>	<b>28</b>	<b>30</b>	<b>28</b>	<b>27</b>	<b>30</b>	<b>28</b>	<b>28</b>	<b>29</b>	<b>19</b>	<b>36</b>	<b>33</b>	<b>38</b>	<b>34</b>	<b>17</b>	<b>22</b>	<b>36</b>	<b>27</b>	<b>32</b>
Reform Healthcare	10	9	10	9	9	9	10	12	10	12	14	9	17	15	18	17	7	10	17	12	15
Protect Medicare	11	16	11	12	14	13	12	12	11	10	10	7	11	11	12	11	7	8	11	9	10
Improving Education	6	6	5	7	7	7	5	6	7	6	6	3	8	7	8	6	4	4	8	6	7
<b>SECURITY</b>	<b>19</b>	<b>17</b>	<b>19</b>	<b>18</b>	<b>19</b>	<b>19</b>	<b>20</b>	<b>20</b>	<b>22</b>	<b>22</b>	<b>22</b>	<b>35</b>	<b>14</b>	<b>17</b>	<b>15</b>	<b>14</b>	<b>35</b>	<b>34</b>	<b>11</b>	<b>23</b>	<b>20</b>
Fix Immigration	7	6	9	7	8	10	9	9	11	9	13	20	9	10	7	9	21	20	6	13	12
Nat'l Sec./Terror	9	8	7	9	7	6	8	9	9	10	7	13	3	5	5	4	12	11	4	8	6
Defeat/Destroy ISIS	4	3	3	2	3	3	2	2	3	3	2	2	2	2	3	2	2	3	1	2	2
<b>HONESTY/ INTEGRITY/D.C.</b>	<b>16</b>	<b>15</b>	<b>17</b>	<b>16</b>	<b>14</b>	<b>16</b>	<b>15</b>	<b>17</b>	<b>15</b>	<b>15</b>	<b>15</b>	<b>13</b>	<b>15</b>	<b>19</b>	<b>15</b>	<b>17</b>	<b>14</b>	<b>11</b>	<b>20</b>	<b>15</b>	<b>16</b>
<b>D.K./REFUSED</b>	<b>2</b>	<b>3</b>	<b>3</b>	<b>4</b>	<b>3</b>	<b>4</b>	<b>3</b>	<b>2</b>	<b>2</b>	<b>2</b>	<b>3</b>	<b>3</b>	<b>3</b>	<b>3</b>	<b>1</b>	<b>4</b>	<b>4</b>	<b>2</b>	<b>2</b>	<b>2</b>	<b>4</b>

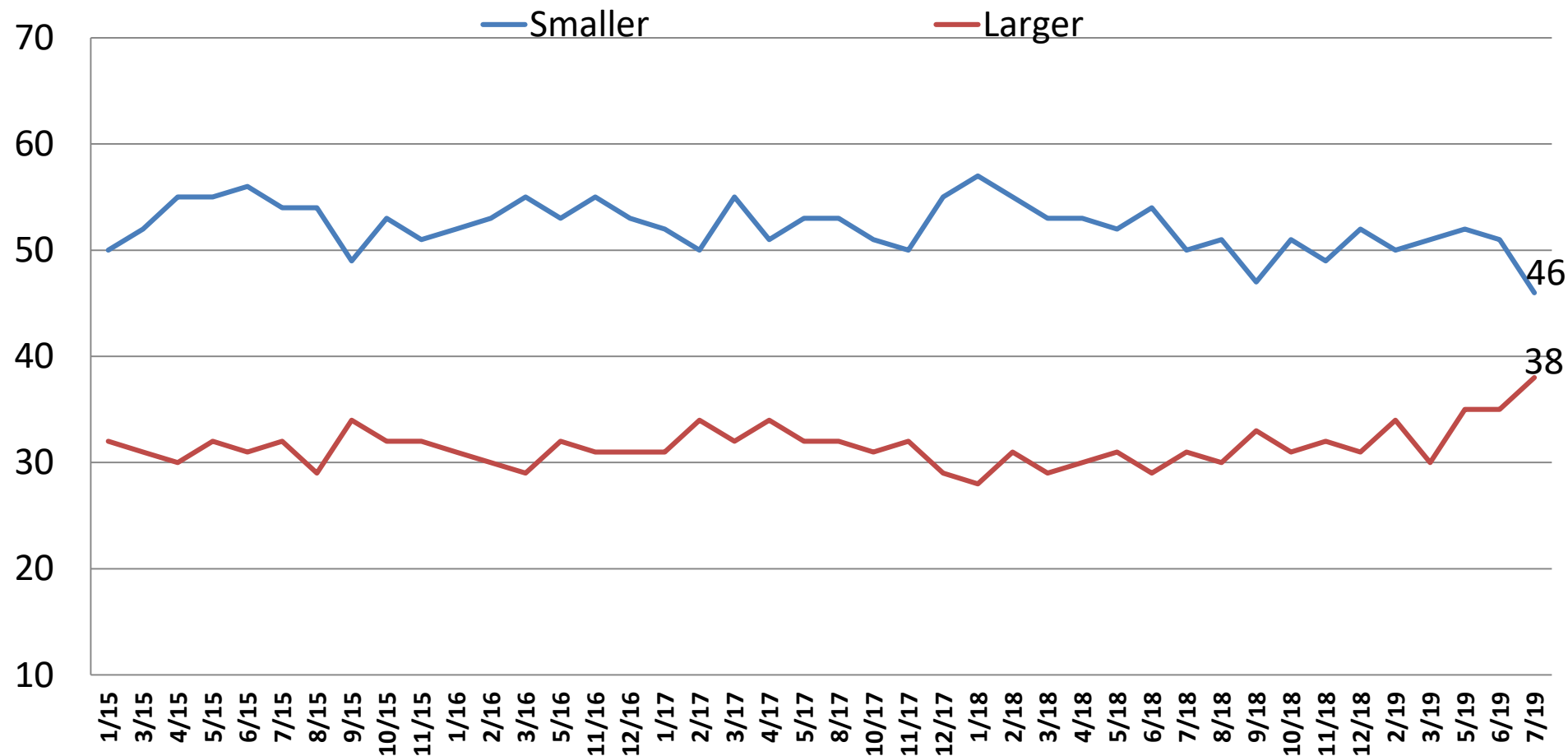
# Current Opinion of the U.S. Economy

## Time Series

	<u>2/19</u>	<u>3/19</u>	<u>5/19</u>	<u>6/19</u>	<u>7/19</u>	<u>Rep</u>	<u>Dem</u>	<u>Ind</u>	<u>Lib</u>	<u>Mod</u>	<u>Cons</u>	<u>App. DJT</u>	<u>Disapp. DJT</u>	<u>Men</u>	<u>Women</u>
<b>NOT RECESSION</b>	<b>68</b>	<b>70</b>	<b>67</b>	<b>66</b>	<b>69</b>	<b>79</b>	<b>60</b>	<b>69</b>	<b>66</b>	<b>61</b>	<b>80</b>	<b>78</b>	<b>63</b>	<b>76</b>	<b>63</b>
Getting Better	39	40	42	40	42	69	19	38	23	31	69	69	19	50	35
Getting Worse	29	30	26	25	28	10	41	31	43	31	11	9	44	26	29
<b>RECESSION</b>	<b>22</b>	<b>21</b>	<b>23</b>	<b>25</b>	<b>21</b>	<b>14</b>	<b>27</b>	<b>21</b>	<b>26</b>	<b>24</b>	<b>14</b>	<b>16</b>	<b>25</b>	<b>19</b>	<b>23</b>
Getting Better	9	11	12	13	10	9	12	10	10	12	8	12	9	11	10
Getting Worse	13	11	11	12	11	5	15	12	16	12	5	4	16	9	13
<b>D.K./REFUSED</b>	<b>10</b>	<b>9</b>	<b>10</b>	<b>10</b>	<b>10</b>	<b>7</b>	<b>13</b>	<b>10</b>	<b>8</b>	<b>15</b>	<b>7</b>	<b>6</b>	<b>12</b>	<b>5</b>	<b>14</b>
<b>GETTING BETTER</b>	<b>48</b>	<b>51</b>	<b>53</b>	<b>53</b>	<b>52</b>	<b>79</b>	<b>31</b>	<b>48</b>	<b>34</b>	<b>43</b>	<b>77</b>	<b>81</b>	<b>28</b>	<b>60</b>	<b>45</b>
<b>GETTING WORSE</b>	<b>42</b>	<b>40</b>	<b>37</b>	<b>37</b>	<b>38</b>	<b>15</b>	<b>56</b>	<b>43</b>	<b>59</b>	<b>42</b>	<b>16</b>	<b>13</b>	<b>60</b>	<b>35</b>	<b>41</b>
<b>D.K./REFUSED</b>	<b>10</b>	<b>9</b>	<b>10</b>	<b>10</b>	<b>10</b>	<b>7</b>	<b>13</b>	<b>10</b>	<b>8</b>	<b>15</b>	<b>7</b>	<b>6</b>	<b>12</b>	<b>5</b>	<b>14</b>
<i>Net Diff.</i>	<i>5</i>	<i>11</i>	<i>16</i>	<i>15.3</i>	<i>13.8</i>	<i>64</i>	<i>-25</i>	<i>5</i>	<i>-25</i>	<i>1</i>	<i>61</i>	<i>68</i>	<i>-32</i>	<i>25</i>	<i>4</i>

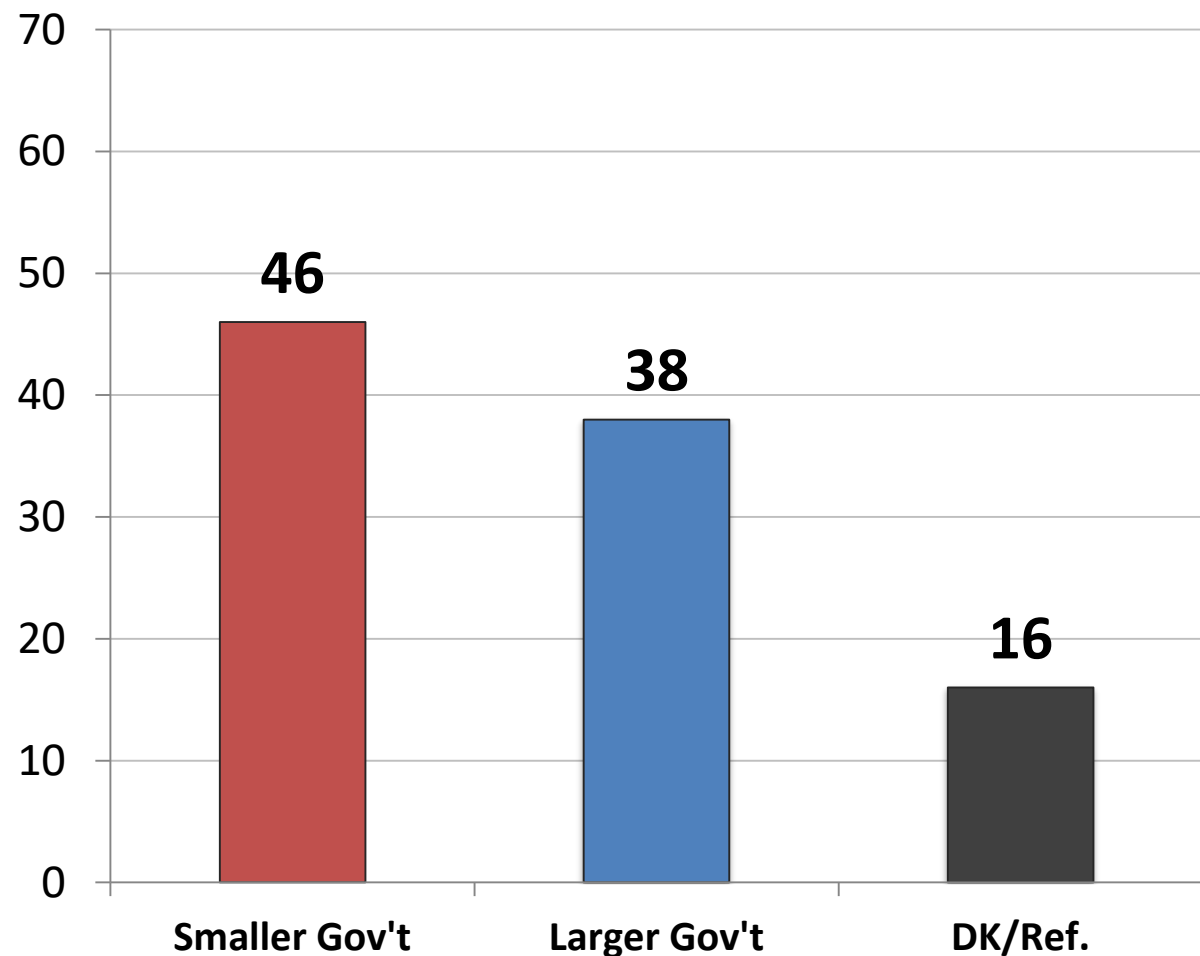
# Would you say you most favor a smaller government with fewer services or a larger government with many services?

## *Time Series*



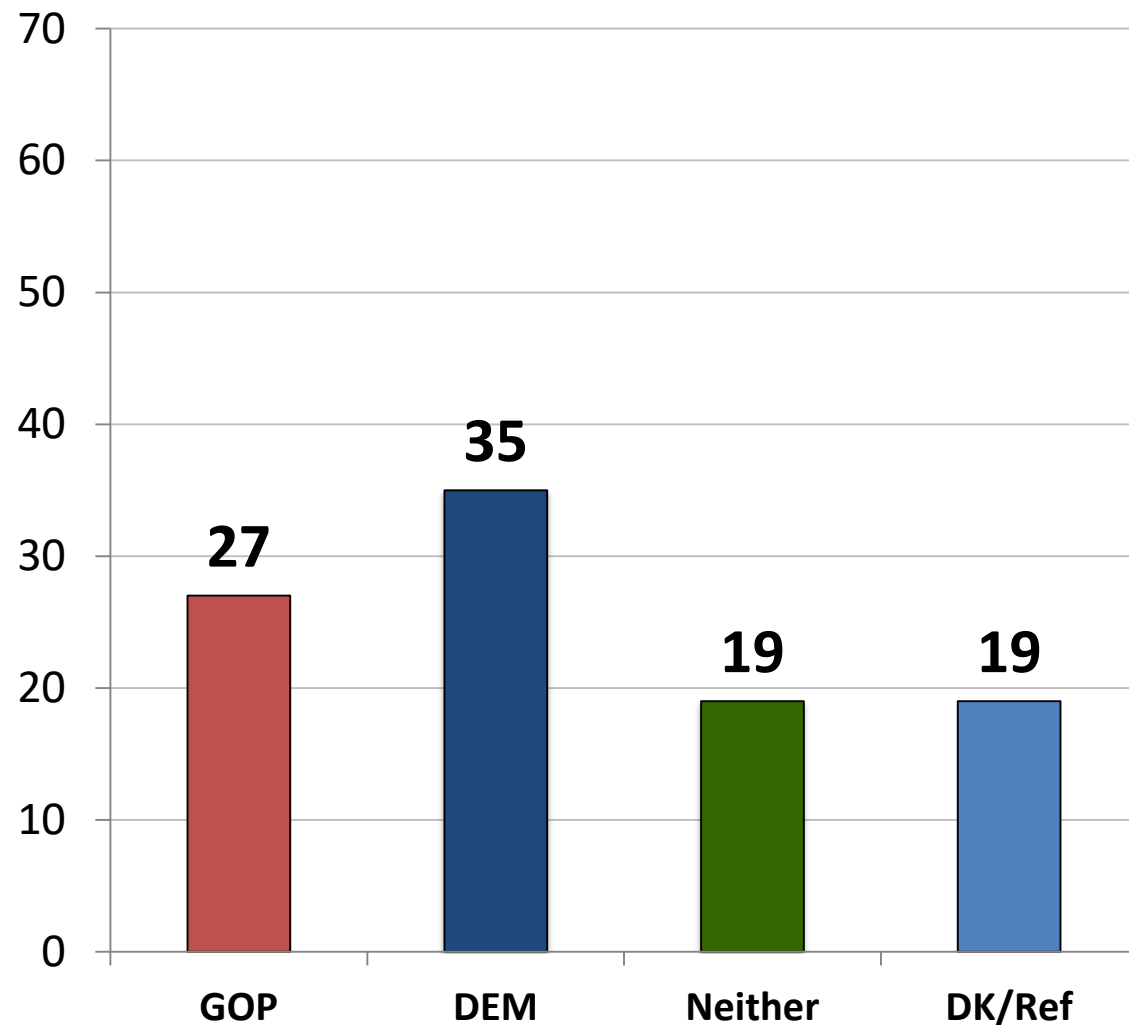


# Would you say you most favor a smaller government with fewer services or a larger government with many services?



	<u>Smaller</u>	<u>Larger</u>
East	45	43
Midwest	51	35
South	46	39
West	44	37
Cont. Trump Pol.	67	22
Change Direction	31	53
Approve – Trump	65	25
Disapprove – Trump	31	50
Favorable – Trump	64	24
Unfavorable – Trump	33	50
Vote Pres. 2016 – Clinton	29	55
Vote Pres. 2016 – Trump	67	22
Vote Cong. 2020 – GOP	69	20
Vote Cong. 2020 – DEM	27	56
Vote Cong. 2020 – UND	38	32
Republican	68	22
Democrat	26	58
Independent	47	33
Liberal	33	57
Moderate	35	41
Conservative	70	19
No College Degree	46	34
College Graduate	46	42
White	52	32
African- American	27	58
Hispanic	40	48
Under 55	42	43
Over 55	54	31
Married	51	36
Single	41	41
Men	52	37
Women	42	39

# Independents – Which party's primary are you more likely to vote?



	<u>GOP</u>	<u>DEM</u>	<u>NTR</u>
East	27	27	24
Midwest	30	27	21
South	33	35	14
West	17	51	18
Cont. Trump Pols.	63	11	16
Change Direction	7	55	23
Approve – Trump	56	13	14
Disapprove – Trump	9	52	23
Favorable – Trump	62	10	14
Unfavorable– Trump	10	52	23
Vote Pres. 2016 – Clinton	7	60	20
Vote Pres. 2016 – Trump	62	9	14
Vote Cong. 2020 – GOP	68	13	11
Vote Cong. 2020 – DEM	8	66	21
Vote Cong. 2020 – UND	7	12	25
Republican	0	0	0
Democrat	0	0	0
Independent	27	35	19
Liberal	9	63	15
Moderate	22	31	24
Conservative	52	20	12
No College Degree	24	31	20
College Graduate	30	39	17
White	30	33	20
African- American	3	44	15
Hispanic	32	44	7
Under 55	26	36	18
Over 55	29	34	20
Married	39	29	19
Single	18	41	18
Men	33	38	17
Women	22	32	21

# 2020 Republican Primary for President

	<u>11/18</u>	<u>12/18</u>	<u>2/19</u>	<u>3/19</u>	<u>5/19</u>	<u>6/19</u>	<u>7/19</u>	<u>E</u>	<u>MW</u>	<u>S</u>	<u>W</u>	<u>Rep</u>	<u>Dem</u>	<u>Ind</u>	<u>Lib</u>	<u>Mod</u>	<u>Cons</u>	<u>App. DJT</u>	<u>Disap. DJT</u>	<u>Men</u>	<u>Women</u>	<u>White</u>	<u>AA</u>	<u>HISP</u>
Donald Trump	79	72	72	80	77	79	81	81	80	84	75	83	0	72	80	57	89	82	10	86	75	83	42	70
Bill Weld	-	-	-	1	3	7	2	3	1	2	2	2	0	2	4	3	1	1	10	3	1	1	28	3
Mark Sanford	-	-	-	-	-	-	4	9	3	3	2	4	0	4	2	10	2	1	22	3	5	3	0	6
John Kasich	4	5	6	5	5	-	-	-	-	-	-	-	-	-	-	-	-	-	-	-	-	-	-	-
Larry Hogan	-	-	-	-	1	-	-	-	-	-	-	-	-	-	-	-	-	-	-	-	-	-	-	-
Mitt Romney	5	9	10	-	-	-	-	-	-	-	-	-	-	-	-	-	-	-	-	-	-	-	-	-
Jeff Flake	1	2	-	-	-	-	-	-	-	-	-	-	-	-	-	-	-	-	-	-	-	-	-	-
Undecided	11	12	11	14	14	13	14	7	16	12	21	12	0	22	14	31	8	6	58	9	19	13	30	20

# 2020 Democratic Primary for President

	11/18	12/18	2/19	3/19	5/19	6/19	7/19	E	MW	S	W	Rep	Dem	Ind	Lib	Mod	Cons	App. DJT	Disap DJT	Men	Women	White	AA	HISP
Joe Biden	19	17	25	28	30	34	28	29	28	34	18	0	30	23	23	33	35	19	30	25	31	25	47	21
Bernie Sanders	16	18	16	17	19	17	15	10	18	14	20	0	15	16	21	10	5	10	16	19	13	17	8	18
Kamala Harris	5	3	8	8	7	6	10	17	8	8	10	0	10	12	11	9	9	4	11	13	8	9	12	9
Elizabeth Warren	4	4	5	5	7	11	9	7	11	9	11	0	9	11	12	7	4	4	10	6	12	12	5	3
Beto O'Rourke	n/a	11	6	8	5	4	4	3	3	5	4	0	4	4	5	3	5	6	4	4	5	3	3	10
Pete Buttigieg	-	-	.1	3	4	6	3	6	2	2	3	0	3	4	3	4	0	3	3	4	2	5	0	1
Cory Booker	3	2	3	3	5	2	3	3	4	2	3	0	3	2	4	1	4	0	3	5	1	3	3	4
Andrew Yang	-	-	.1	0	2	1	2	4	2	1	3	0	2	4	2	2	2	3	2	2	2	2	0	1
Julian Castro	-	-	1	0	1	.4	1	2	0	2	2	0	1	2	1	2	0	4	1	2	1	1	1	3
Tulsi Gabbard	-	-	.4	-	.4	1	1	2	0	1	2	0	1	1	1	1	2	3	1	2	1	1	2	2
Tom Steyer	-	-	-	-	-	1	1	3	1	1	0	0	1	2	1	2	0	5	1	1	1	1	0	2
John Hickenlooper	1	1	1	-	.4	.4	1	0	2	1	3	0	0	4	0	1	6	2	1	1	1	2	0	1
Marianne Williamson	-	-	-	-	-	.3	1	0	2	1	0	0	1	1	1	0	3	4	0	1	0	1	1	0

# 2020 Democratic Primary for President Cont.

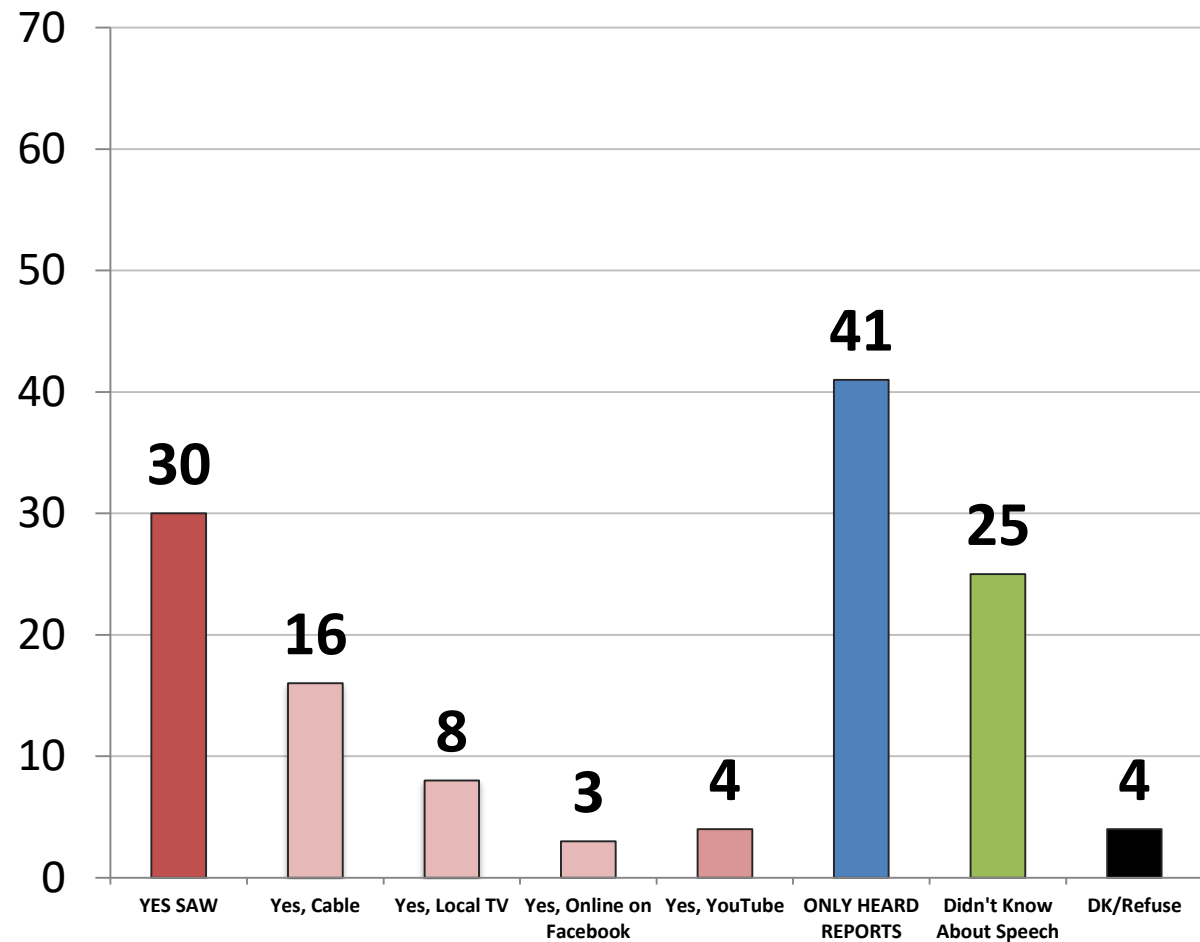
	<u>11/18</u>	<u>12/18</u>	<u>2/19</u>	<u>3/19</u>	<u>5/19</u>	<u>6/19</u>	<u>7/19</u>	<u>E</u>	<u>MW</u>	<u>S</u>	<u>W</u>	<u>Rep</u>	<u>Dem</u>	<u>Ind</u>	<u>Lib</u>	<u>Mod</u>	<u>Cons</u>	<u>App. DJT</u>	<u>Disapp DJT</u>	<u>Men</u>	<u>Wo- men</u>	<u>Whit e</u>	<u>AA</u>	<u>HISP</u>
John Delaney	-	-	.2	1	.4	.3	1	1	0	0	2	0	0	2	1	1	2	4	0	2	0	1	0	0
Kirsten Gillibrand	1	1	1	1	1	.3	1	0	1	1	1	0	1	1	0	2	0	0	1	1	0	1	0	0
Tim Ryan	-	-	-	-	1	.3	1	0	3	0	0	0	1	1	1	1	0	2	1	1	0	1	0	0
Jay Inslee	-	-	.2	.2	.4	1	1	0	0	1	1	0	1	1	1	1	0	1	1	0	1	0	0	0
Steven Bullock	-	-	-	-	.2	.4	1	2	0	0	1	0	1	0	1	1	0	5	0	1	0	1	0	1
Bill De Blasio	0.3	0	.2	.3	.2	1	1	1	0	1	1	0	1	0	1	0	2	2	0	1	0	1	0	1
Michael Bennet	-	-	-	-	1	.2	.4	0	0	1	1	0	1	0	0	1	2	0	1	0	0	0	1	0
Amy Klobuchar	N/A	1	1	1	2	1	.4	0	2	0	0	0	0	1	1	0	0	0	0	0	0	0	1	0
Seth Moulton	-	-	-	-	1	1	.4	1	0	1	0	0	1	0	0	0	2	3	0	0	0	1	0	0
Mike Gravel	-	-	-	-	1	.3	.4	0	0	1	0	0	1	0	1	0	0	3	0	1	0	0	0	1
Wayne Messam	-	-	-	-	.3	1	.2	0	0	0	1	0	0	0	0	0	0	0	0	0	0	0	0	0
Undecided	16	11	15	16	13	12	14	10	16	15	12	0	16	8	8	21	17	16	13	7	19	11	18	17

# 2020 Democratic Primary for President Cont.

*(Prior Candidates Asked)*

	<u>11/18</u>	<u>12/18</u>	<u>2/19</u>	<u>3/19</u>	<u>5/19</u>	<u>6/19</u>
Hillary Clinton	<b>8</b>	<b>9</b>	<b>7</b>	<b>8</b>	-	-
Oprah Winfrey	4	3	5	-	-	-
Michael Bloomberg	<b>2</b>	<b>2</b>	<b>2</b>	-	-	-
Sherrod Brown	-	-	<b>1</b>	-	-	-
Andrew Cuomo	<b>1</b>	--	<b>1</b>	<b>0</b>	-	-
Deval Patrick	<b>1</b>	<b>1</b>	<b>1</b>	-	-	-
Mark Zuckerberg	<b>1</b>	<b>0</b>	<b>1</b>	-	-	-
Eric Holder	<b>1</b>	<b>1</b>	<b>.2</b>	-	-	-
Terry McAuliffe	-	-	<b>.1</b>	<b>.3</b>	-	-
Tim Kaine	<b>1</b>	<b>0</b>	<b>0</b>	-	-	-
Howard Schultz	<b>0.1</b>	<b>0</b>	-	-	-	-
Michael Avenatti	<b>0.4</b>	-	-	-	-	-
Michelle Obama	17	16	-	-	-	-
Eric Swallwell	-	-	-	-	<b>.2</b>	<b>1</b>

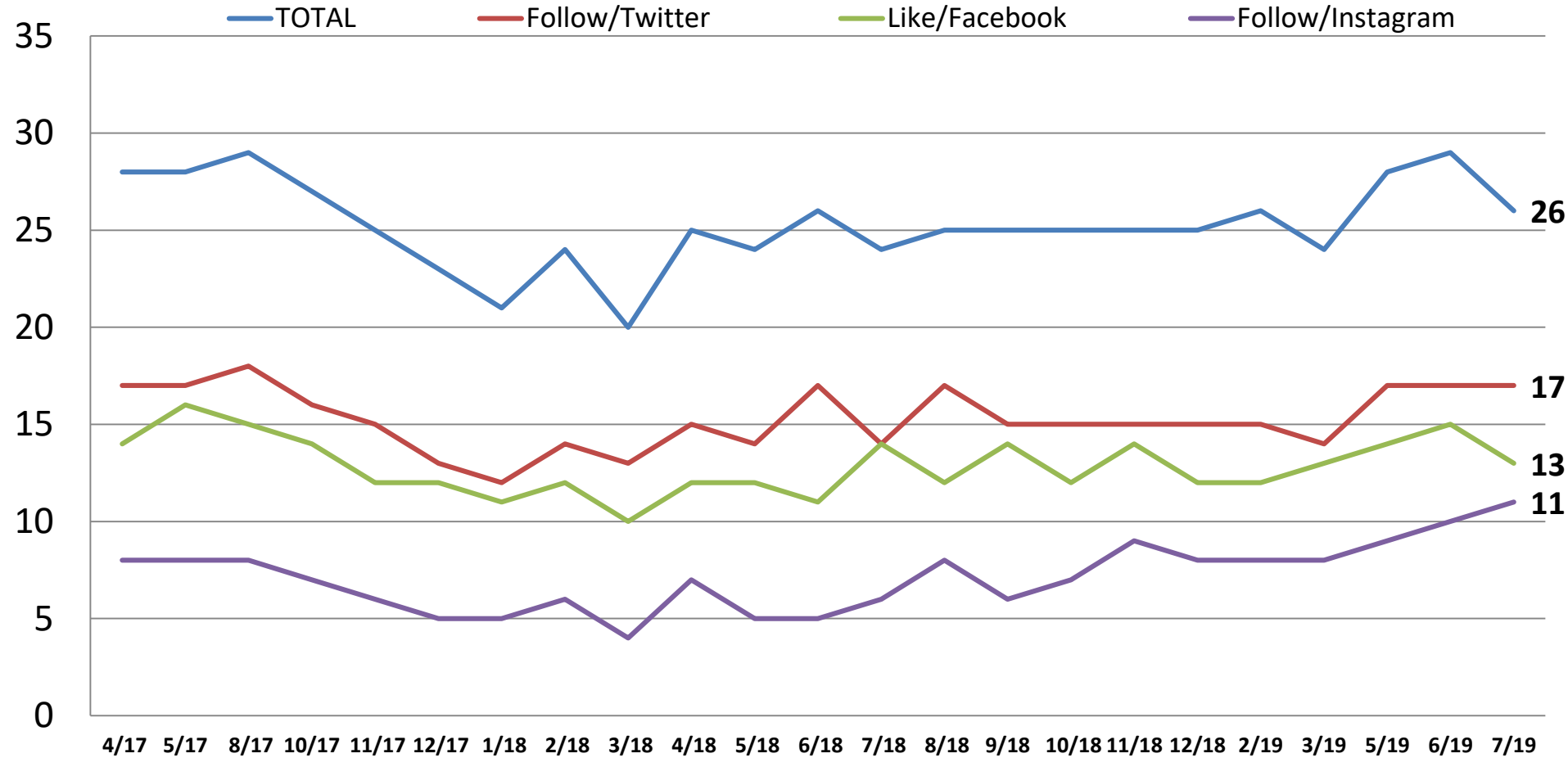
# On the 4<sup>th</sup> of July, did you watch the President's speech?



	Yes Saw	Only News	Didn't Know
East	33	36	28
Midwest	21	45	30
South	33	41	22
West	33	41	21
Cont. Trump Pol.	45	37	15
Change Direction	21	44	31
Approve – Trump	45	36	16
Disapprove – Trump	18	46	32
Favorable – Trump	46	34	15
Unfavorable – Trump	19	48	31
Vote Pres. 2016 – Clinton	22	45	30
Vote Pres. 2016 – Trump	45	37	16
Vote Cong. 2020 – GOP	43	38	17
Vote Cong. 2020 – DEM	23	45	28
Vote Cong. 2020 – UND	8	34	46
Republican	45	36	17
Democrat	25	41	29
Independent	22	46	28
Liberal	30	44	22
Moderate	24	41	32
Conservative	36	39	20
No College Degree	27	38	29
College Graduate	33	43	21
White	30	43	24
African- American	20	39	34
Hispanic	41	31	24
Under 55	34	33	28
Over 55	24	53	20
Married	37	41	20
Single	28	37	29
Men	40	41	17
Women	22	41	32

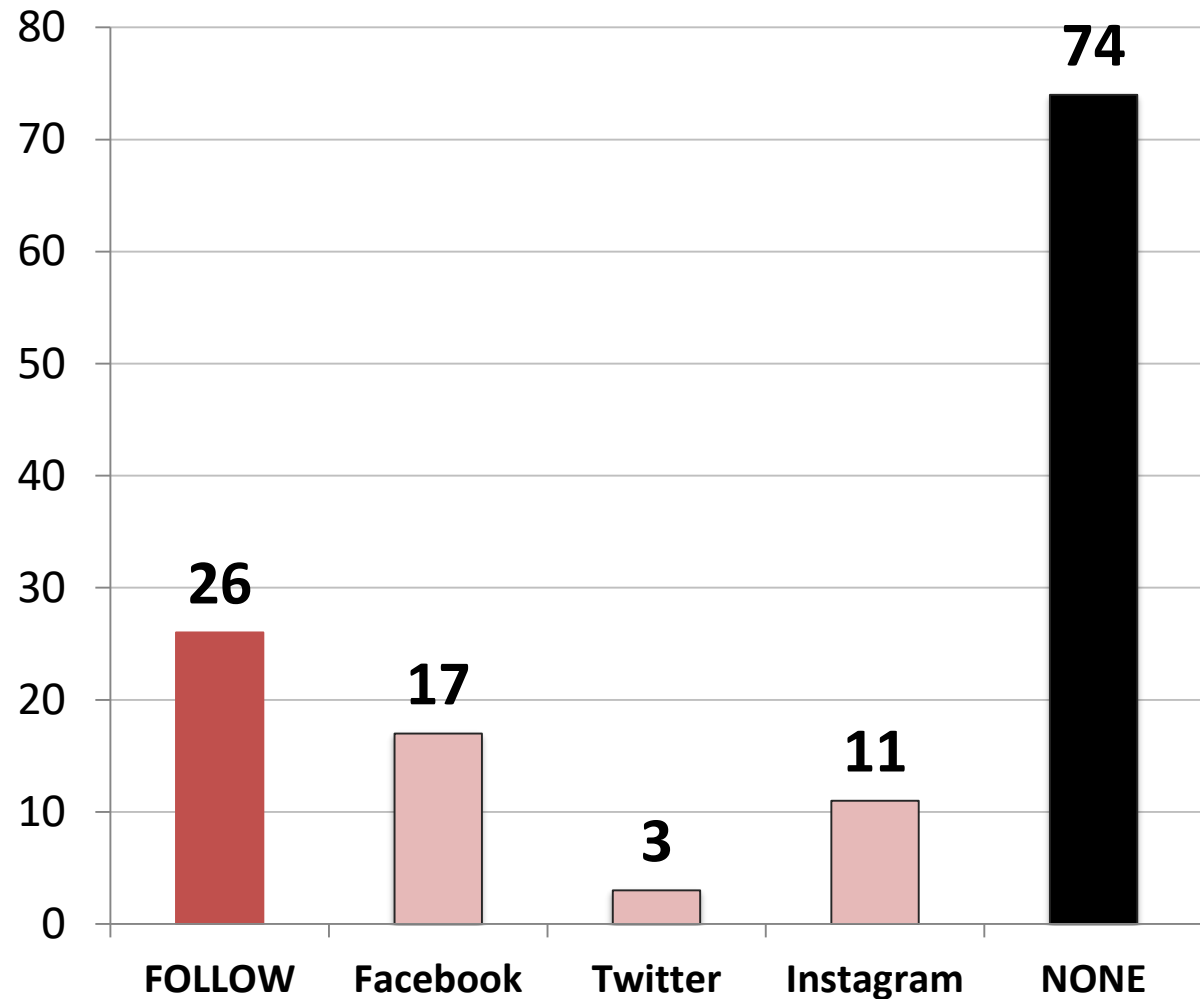
# Do you follow Donald Trump on Twitter, Instagram and/or have you like his page on Facebook, meaning his posts show up on your newsfeed?

- Time Series -





Do you follow Donald Trump on Twitter, Instagram and/or have you like his page on Facebook, meaning his posts show up on your newsfeed?



	<u>Follow</u>	<u>None</u>
East	30	70
Midwest	19	81
South	29	71
West	27	73
Cont. Trump Pols.	45	55
Change Direction	14	86
Approve – Trump	46	54
Disapprove – Trump	11	90
Favorable – Trump	46	54
Unfavorable– Trump	12	88
Vote Pres. 2016 – Clinton	15	85
Vote Pres. 2016 – Trump	41	59
Vote Cong. 2020 – GOP	41	59
Vote Cong. 2020 – DEM	16	84
Vote Cong. 2020 – UND	11	89
Republican	41	59
Democrat	17	83
Independent	21	79
Liberal	27	73
Moderate	18	82
Conservative	34	66
No College Degree	25	76
College Graduate	28	72
White	26	74
African- American	15	85
Hispanic	42	58
Under 55	33	67
Over 55	16	84
Married	32	69
Single	24	76
Men	35	66
Women	19	81

# From the following list, which social media networks do you use?

	<u>Total</u>	<u>Rep</u>	<u>Dem</u>	<u>Ind</u>	<u>Lib</u>	<u>Mod</u>	<u>Cons</u>	<u>App. DJT</u>	<u>Disapp. DJT</u>	<u>Under 55</u>	<u>Over 55</u>	<u>Men</u>	<u>Wo- men</u>
Facebook	76	78	76	74	78	76	75	79	74	80	72	73	79
YouTube	56	52	60	58	66	53	51	55	58	66	42	57	56
Instagram	43	40	49	40	53	43	35	41	45	57	22	41	45
Twitter	37	32	43	34	50	32	29	36	37	46	22	41	33
Pinterest	32	31	33	32	40	28	30	31	34	36	26	19	44
Linked-In	28	29	27	29	33	26	26	30	27	32	23	30	27
Snapchat	25	22	32	20	37	22	19	23	27	38	5	24	26
WhatsApp	14	14	17	12	20	14	10	16	13	20	5	17	12
Reddit	12	8	15	13	20	10	8	11	13	18	4	14	10
Tumblr	10	8	13	8	19	6	6	9	11	15	3	12	8
Periscope	3	2	3	3	4	2	2	3	2	4	1	3	2
Other	2	3	3	1	2	2	3	2	2	3	1	1	3
None	8	10	6	9	5	8	12	8	8	4	16	9	8

# 2020 Likely General Election Voter Profile

n= 1,000

<u>Party</u>	<u>Total</u>	<u>Age</u>	<u>Total</u>	<u>Region</u>	<u>TOTAL</u>
Republican	33	18-29	18	East	18
Democrat	36	30-40	19	Midwest	24
Independent	31	41-55	23	South	37
<b><u>Ideology</u></b>		56-65	20	West	21
Liberal	30	Over 65	20	<b><u>Area</u></b>	
Moderate	35	<b><u>Race</u></b>		Urban	29
Conservative	35	White	70	Suburban	49
<b><u>Voting Behavior</u></b>		African American	12	Rural	23
Definitely	83	Hispanic	12		
Very likely	12	Asian	4		
Somewhat Likely	5	<b><u>Gender</u></b>			
		Male	47		
		Female	53		



# McLaughlin & Associates

## **New York Office**

566 South Route 303

Blauvelt, NY 10913

845-365-2000

## **D.C./Virginia Office**

919 Prince Street

Alexandria, VA 22314

703-518-4445

[www.mclaughlinonline.com](http://www.mclaughlinonline.com)