

New Methods in Automatic Extracting

H. P. EDMUNDSON

University of Maryland, College Park, Maryland*

ABSTRACT. This paper describes new methods of automatically extracting documents for screening purposes, i.e. the computer selection of sentences having the greatest potential for conveying to the reader the substance of the document. While previous work has focused on one component of sentence significance, namely, the presence of high-frequency content words (key words), the methods described here also treat three additional components: pragmatic words (cue words); title and heading words; and structural indicators (sentence location).

The research has resulted in an operating system and a research methodology. The extracting system is parameterized to control and vary the influence of the above four components. The research methodology includes procedures for the compilation of the required dictionaries, the setting of the control parameters, and the comparative evaluation of the automatic extracts with manually produced extracts. The results indicate that the three newly proposed components dominate the frequency component in the production of better extracts.

KEY WORDS AND PHRASES: automatic extracting, automatic abstracting, sentence selection, document screening, sentence significance, relevance, content words, key words, pragmatic words, cue words, title words, sentence location, research methodology, parameterization, comparative evaluation

CR CATEGORIES: 3.10, 3.69, 3.71, 3.72, 3.74

Introduction

HISTORICAL BACKGROUND. Shortly after research in automatic translation began, interest was aroused in the possibility of automatically abstracting documents. Emphasis was placed on the production of indicative abstracts (i.e. abstracts that allow a searcher to screen a body of literature to decide which documents deserve more detailed attention) rather than on the production of informative abstracts (i.e. abstracts that can serve as substitutes for the document).

Also, it was hypothesized that an extract of a document (i.e. a selection of "significant" sentences of a document) can serve as an abstract. This hypothesis concerning the substitutability of extracts for abstracts has been discussed in [1, 2, and 4]. All automatic abstracting methods to date have only extracted documents, i.e. the computer has selected sentences of the document and listed them in text order. Although it has been recognized for some time that this kind of automatic abstract might better be called an "automatic extract," "abstract" is often used as the generic term.

The original method of Luhn assigned weights to each sentence of the document

* Computer Science Center. The work reported here was initially conducted at Thompson-Ramo-Wooldridge, Inc. (now Bunker-Ramo Corporation) with the support of the Rome Air Development Center, Research and Technology Division, Air Force Systems Command, and was later continued at System Development Corporation under their Independent Research Program.

according to statistical criteria, in fact, a simple function of the number of high frequency words occurring in the sentence. Common words such as "the," "and," "at," and "are" were disregarded because of their very high frequency alone, and the remaining words were assigned frequency weights that provided sentence weights for measuring sentence significance. The extracts produced by this strictly statistical method were of sufficient quality to encourage further research [3, 6]. However, a purely statistical method of producing extracts was suspected of being inadequate, and hence other methods were sought [7].

SUMMARY OF PRESENT STUDY. The objective of this study was twofold: first, an extracting system to produce indicative extracts, and second, a research methodology to handle new text and new extracting criteria efficiently. The purpose of the present paper is to make the results of this study more readily available.

The research methodology comprised a study of the abstracting behavior of humans, a general formulation of the abstracting problem and its relation to the problem of evaluation, a mathematical and logical study of the problem of assigning numerical weights to sentences, and a set of extracting experiments employing cyclic improvement.

The extracting system developed uses four basic methods to produce automatic extracts of technical documents approximately 4000 words in length with the IBM 7090-7094 (and has been reprogrammed for the UNIVAC 1103A and CDC 1604). The automatic extracts are believed to be of sufficiently high quality to be used in the screening of large collections of documents. The system has been parameterized to permit modification of both prestored and generated word lists, to re-adjust weights assigned to text characteristics, to permit selection from 15 combinations of the four basic methods of extracting, and to alter the length of an automatic extract.

Three different evaluation schemes were applied to the resulting automatic extracts. Comparison of the automatic extracts and corresponding "target" extracts of 40 documents, which had not been used in the developmental research, showed that a mean of 44 percent of the sentences were coselected. Also, the mean similarity rating, in terms of a subjective evaluation of content by information type, was 66 percent. These are to be compared with a mean of 25 percent coselected sentences and a mean of 34 percent similarity rating between target extracts and random extracts, respectively. Statistical comparison of the automatic and the corresponding target extracts for the documents used in the developmental phase showed a mean of 57 percent coselected sentences with a standard deviation of 15 percent. A sentence-by-sentence analysis of the corresponding automatic and target extracts of 20 of these documents resulted in a judgment that 84 percent of the computer-selected sentences could be classified as extract-worthy; i.e. they would be worthy of selection in an extract of unrestricted length.

The following sections of this paper treat the research methodology used in the study, the extracting system, and the outlook for further research.

Research Methodology

RESEARCH STEPS. The work reported here relies on the detection and use of sentence "significance." Within sentences selected by humans in forming an extract,

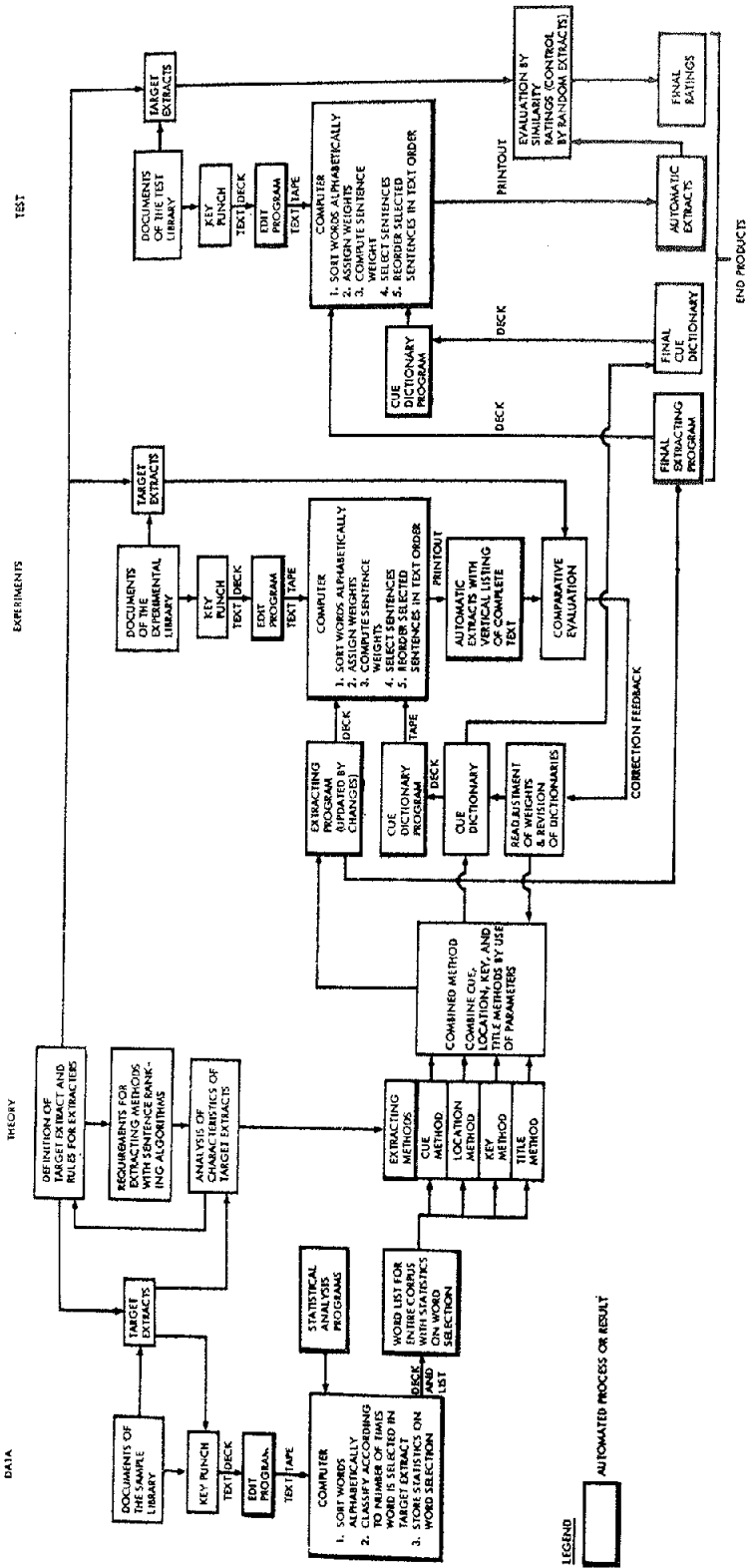


Fig. 1. Research methodology for automatic extracting study

There exist certain clues that, independent of subject content, tend to indicate those sentences are significant. The goal was to replace the subjective notion "significant" by an operational procedure. A methodology was sought whereby a computer could produce extracts as useful as conventionally created abstracts. The approach was to look for selection criteria among manually selected and rejected sentences.

The research steps, in chronological order, were:

- 1) select a corpus of documents;
- 2) study the characteristics—both in terms of content and machine-recognizability—of traditional manual abstracts of documents;
- 3) specify the desired form and content of the "target" (manual) extracts;
- 4) manually produce, for an experimental library of documents, target extracts that meet both the content and machine specifications;
- 5) develop a system that assigns numerical weights to machine-recognizable characteristics;
- 6) program a computer to produce automatic extracts;
- 7) cyclically improve the program by comparing the automatic extracts and their target extracts; and
- 8) evaluate the extracting system on a new group of documents not previously used in the experimental development.

The steps of the research methodology are shown in Figure 1.

SELECTION OF THE CORPUS. For the purpose of determining initial weights and parameters, preliminary statistical data (on common words, sentence length, sentence position) were obtained from 200 documents in the fields of physical science, life science, information science, and the humanities; hereafter this collection is called the heterogeneous corpus.

For the extracting experiments a different corpus, consisting of 200 documents in chemistry, was used. These documents were contractor reports to various government agencies and ranged in length from 100 to 3900 words, with an average of 1000. The limitation on document length was imposed by the limited computer storage available for the text of a document under the present program. These technical reports, written by chemists, chemical engineers, and physicists, were usually formatted and terse, and contained equations and experimental data.

Since a fair evaluation of experimental results required that the system be tested on documents different from those used in developing it, the chemistry corpus was divided into an experimental library of documents to serve as the data base for experimentation, and a test library of documents reserved for evaluation of the extracting program after experimentation had been completed.

TARGET EXTRACTS

Specification of Target Extracts. A set of instructions for human extractors was developed comprising the following specifications for the content and form of the target extracts, and the systematic procedures for composing them.

Sentences were selected only if they were eligible in terms of content. A sentence was called *eligible* if it contained information of at least one of the following types:

Subject Matter. Information indicating the general subject area with which the author is principally concerned (i.e. *what?*).

Purpose. Information indicating whether the author's principal intent is to offer original research findings, to survey or evaluate the work performed by others, to present a speculative or theoretical discussion, or to serve some other main purpose (i.e. *why?*).

Methods. Information indicating the methods used in conducting the research. Depending on the type of research, such statements may refer to experimental procedures, mathematical techniques, or other methods of scientific investigation (i.e. *how?*).

Conclusions or Findings. Information indicating the author's conclusions or the research results.

Generalizations or Implications. Information indicating the significance of the research and its bearing on broader technical problems or theory.

Recommendations or Suggestions. Information indicating recommended courses of action or suggested areas of future work.

2. Sentences were selected to minimize redundancy in the extract. A sequence of sentences was said to be *nonredundant* if their information content was not repeated by reiteration, paraphrasing, or direct implication.

3. Sentences were selected to maximize coherence. A sequence of sentences was said to be *coherent* if all crucial antecedents and referents were present, no semantic discontinuities were present, and the sequence of ideas progressed logically.

4. The number of sentences selected was predetermined by a rule. Even though 25 percent of the sentences of the document was used as the length parameter for this research, this is not proposed as the optimal figure because it depends both on the purpose the extract is to serve and on the length and nature of the document.

An example of a target extract appears in Figure 2.

PREPARATION OF TARGET EXTRACTS

Analysis Procedure. To systematize the manual preparation of target extracts by humans, an analysis sheet itemizing every sentence was completed for each document. Here the extractor recorded his judgment about the eligibility of the sentence, his findings on its dependency on other sentences (e.g. antecedents), and whether the sentence was selected for the target extract. To facilitate comparisons, columns were also provided to record sentence selections by the various automatic methods and by a random-selection procedure used to evaluate the comparison scores described below.

Composition Problems. Much of the target-extracting effort was devoted to locating duplications of information throughout the document. A typical chemistry document had a summary at the beginning, an orientation section, a methods section, a discussion section, and, frequently, a conclusion that rephrased the initial summary. Hence the same information often appeared in several places in a document. Occasionally, however, nearly the entire document comprised research conclusions. When a hierarchy, either of significance or of generality, could not be established, no abstract could logically be composed by extracting. In this case a description representation was appropriate. However, if the document did contain a description of itself, this description rarely amounted to 25 percent of the sentences; if it did not, then the present extracting rules did not yield a coherent extract. Furthermore, to select 25 percent of the sentences, it was occasionally necessary to select several less condensed sentences instead of an equivalent, but

PAR	SENT	DOCUMENT NUMBER	6	1
		ABSTRACT BASED ON HUMAN SELECTION		
		EVALUATION OF THE EFFECT OF DIMETHYLAMINE BORINE AND SEVERAL OTHER ADDITIVES ON COMBUSTION STABILITY CHARACTERISTICS OF VARIOUS HYDROCARBON TYPE FUELS IN PHILLIPS MICROBURNER (AD97730)		
		R. L. BRACE		
1	0	SUMMARY		
2	1	AT THE REQUEST OF THE NAVY BUREAU OF AERONAUTICS, PHILLIPS PETROLEUM COMPANY UNDERTOOK THE EVALUATION OF DIMETHYLAMINE BORINE AS AN ADDITIVE FOR IMPROVING THE COMBUSTION CHARACTERISTICS OF AVIATION GAS TURBINE TYPE FUELS.		
2	2	BECAUSE OF THE SMALL AMOUNT (100 GRAMS) OF DIMETHYLAMINE BORINE RECEIVED FROM CALLERY CHEMICAL COMPANY, THIS EVALUATION HAS BEEN LIMITED TO THE MEASUREMENT OF ITS EFFECT ON THE FLASH-BACK CHARACTERISTICS OF THREE PURE HYDROCARBONS (TOLUENE, NORMAL HEPTANE AND BENZENE) IN THE PHILLIPS MICROBURNER.		
2	3	DIMETHYLAMINE BORINE CONCENTRATIONS OF FROM 0.1 TO 1.0 PER CENT BY WEIGHT WERE EVALUATED.		
3	1	FOR COMPARATIVE PURPOSES TWO COMMON IGNITION ADDITIVES (AMYL NITRATE AND CUMENE HYDROPEROXIDE) WERE ALSO EVALUATED DURING THIS STUDY, AS WELL AS CONCENTRATIONS UP TO 20 PER CENT BY WEIGHT OF PROPYLENE OXIDE - A RELATIVELY HIGH FLAME VELOCITY FUEL.		
3	2	PREVIOUS STUDIES IN PHILLIPS 2 INCH TURBOJET ENGINE TYPE COMBUSTOR HAD INDICATED THAT SUCH MATERIALS COULD SUBSTANTIALLY INCREASE THE MAXIMUM RATE OF HEAT RELEASE ATTAINABLE, ESPECIALLY WITH LOW PERFORMANCE FUELS SUCH AS THE ISO PARAFFIN TYPE HYDROCARBONS - PARTICULARLY WHEN OPERATING UNDER SEVERE CONDITIONS FOR COMBUSTION (I. E., HIGH AIR FLOW VELOCITY OR LOW COMBUSTION PRESSURE).		
4	4	WITH RESPECT TO THE DIMETHYLAMINE BORINE, ITS EFFECT AS A FUEL ADDITIVE WAS NOTEWORTHY; 0.1 WEIGHT PER CENT IN TOLUENE BEING EQUIVALENT TO 20 PER CENT BY WEIGHT OF ADDED PROPYLENE OXIDE.		
4	5	IN GENERAL, ADDITIVE CONCENTRATIONS OF ONE PER CENT BY WEIGHT IN THE SEVERAL PURE HYDROCARBONS WHICH NORMALLY DIFFERED QUITE WIDELY IN PERFORMANCE, PRODUCED UNIFORMLY SUPERIOR COMBUSTION STABILITY CHARACTERISTICS AS MEASURED USING THE PHILLIPS MICROBURNER.		
5	0	I. INTRODUCTION		
8	0	II. DESCRIPTION OF PHILLIPS MICROBURNER (MODEL 1A)		
10	0	III. DESCRIPTION OF TEST APPARATUS		
14	0	IV. DESCRIPTION OF TEST FUELS		
15	2	THESE FUELS REPRESENT VARIATIONS IN CHEMICAL STRUCTURE WHICH WILL IN TURN PROVIDE INDICES OF BOTH GOOD AND POOR COMBUSTION STABILITY PERFORMANCE.		
17	0	V. TEST PROCEDURE		
21	0	VI. RESULTS		
24	1	THE REGION OF STABLE OPERATION IS DEFINED AS THE STATE OF FLASH BACK-THE CONDITIONS OF COMBUSTION WHERE THE FLAME WOULD BECOME ANCHORED TO A FLAME HOLDER - AS IN STABLE GAS TURBINE OR RAM JET COMBUSTOR OPERATION - IF THE FLAME HOLDER WERE PROVIDED IN THE BURNER TUBE.		
25	0	VII. DISCUSSION		
26	2	THE ASSUMPTION IS MADE THAT THE GREATER THE ALLOWABLE HEAT INPUT RATE AT A GIVEN VELOCITY, THE GREATER THE DEGREE OF STABILITY.		
31	3	ALL FOUR ADDITIVES INDICATED THEIR ADDITION TO BE SUBJECT TO THE EFFECT OF DEMINISHING RESULTS UPON FURTHER ADDITION - THAT IS, THEIR EFFECT WAS NOT ESSENTIALLY A BLENDING EFFECT.		
32	1	MENTION SHOULD BE MADE OF THE FACT THAT DURING THE COMBUSTION OF THE DIMETHYLAMINE BORINE-HYDROCARBON FUEL BLENDS NO NOTICEABLE ODORS OR SMOKE WERE OBSERVED.		
33	0	VIII. CONCLUSIONS		
36	1	3. THE ADDITION OF ADDITIVE CONCENTRATIONS (UP TO 1 PER CENT) OF AMYL NITRATE, CUMENE HYDROPEROXIDE, AND DIMETHYLAMINE BORINE ALL RESULTED IN IMPROVED STABILITY PERFORMANCE; THE GREATEST INCREASES WERE SHOWN WHEN BLENDED WITH A FUEL OF POOR PERFORMANCE CHARACTERISTICS - SUCH AS TOLUENE.		
36	2	BENEFICIAL EFFECTS WERE APPRECIABLY LESS WHEN BLENDED WITH A FUEL OF GOOD PERFORMANCE CHARACTERISTICS - SUCH AS N-HEPTANE.		
37	0	IX. RECOMMENDATIONS		
38	1	BASED ON THE EVALUATION OF THE EFFECTS OF ADDITIVES ON THE FLASHBACK LIMITS OF THE ADDITIVE-FUEL BLENDS TESTED IN THE MICROBURNER (MODEL 1A) IT IS RECOMMENDED THAT DIMETHYLAMINE BORINE SHOULD BE FURTHER INVESTIGATED.		
38	2	THIS FUTURE WORK SHOULD INCLUDE STUDY OF COMBUSTION STABILITY AND COMBUSTION EFFICIENCY EFFECTS IN THE PHILLIPS 2 INCH COMBUSTOR AND AN INVESTIGATION OF ITS INFLUENCE ON COMBUSTION CLEANLINESS.		

* Sic

Fig. 2. Target extract

more succinct, one. Although the 25 percent length parameter seemed workable for most documents, in some cases it was manifestly not appropriate.

An attempt was made to classify eligible sentences as to qualitative degree of "extract-worthiness" (a concept analogous to that of quantitative weightings). However, in practice it did not prove satisfactory for sentence selection since it was often impossible to determine if a sentence, seen only in the context of an extract, reported a well-known fact, a result of some previous experiment, or a conclusion of the document being extracted. Furthermore, a sentence was often anaphoric, i.e. depended on another one for its meaning (and there may even have been a series of such dependencies), requiring the selection of both even though the other sentence did not qualify in terms of content. Certain words or phrases such as "this," "therefore," and "since" frequently indicated this situation, and studying their occurrence seemed necessary to the refinement of the automatic method. The more an author used such words for reasons of structuring and style, the more difficult it was to extract sentences from context without destroying their function in the document.

In the composition of maximally coherent and meaningful target extracts, it was noticed that requirements of antecedents, deletions of text due to preediting, minimization of redundancy, and restrictions on the length parameter often took precedence over a sentence-by-sentence rating of extract-worthiness. In the evaluation step it was found that target extracts consistently differed from automatic extracts in precisely these aspects.

AUTOMATIC EXTRACTS

Guiding Principles for Automation. The following principles were devised to guide the development of automatic extracting methods so as to yield close approximations to target extracts:

1. Detect and use all content and format clues to the relative importance of sentences that were originally provided by the author, editor, and printer.
2. Employ mechanizable criteria of selection and rejection, i.e. a system of reward weights for desired sentences and penalty weights for undesired sentences.
3. Employ a system of parameters that can be varied to permit different specifications for extracts.
4. Employ a method that is a function of several linguistic factors (syntactic, semantic, statistical, locational, etc.).

Clearly, a computer can operate only on machine-recognizable characteristics of text (e.g. occurrence of certain words, position of a sentence in a paragraph, number of words in a sentence). A text characteristic was said to be *positively relevant* if it tended to be associated with sentences manually selected to comprise an extract, *negatively relevant* if it tended to be associated with unselected sentences, and *irrelevant* if it tended to be associated equally with selected and unselected sentences (see [5]). The task was to find relevant characteristics of the text and program the computer to recognize and weight them.

The Four Basic Methods. The automatic extracting system was based on assigning to text sentences numerical weights that were functions of the weights assigned to certain machine-recognizable characteristics or clues. For computational simplicity the sentence weights were taken as sums of the weights of these characteristics. The four basic methods (called Cue, Key, Title, and Location) to be

discussed next used different sets of clues to the probable desirability of selecting a sentence for the automatic extract.

It was necessary to distinguish two types of word lists. A *dictionary* was regarded as a list of words with numerical weights that formed a fixed input to the automatic extracting system and was independent of the words in the particular document being extracted. A *glossary* was regarded as a list of words with numerical weights that formed a variable input to the automatic extracting system and was composed of words selected from the document being extracted.

1. *Cue Method.* In the Cue method the machine-recognizable clues are certain general characteristics of the corpus provided by the bodies of documents. The Cue method is based on the hypothesis that the probable relevance of a sentence is affected by the presence of pragmatic words such as "significant," "impossible," and "hardly." The Cue method uses the prestored Cue dictionary of selected words of the corpus. The Cue dictionary comprises three subdictionaries: Bonus words, that are positively relevant; Stigma words, that are negatively relevant; and Null words, that are irrelevant. The final Cue weight for each sentence is the sum of the Cue weights of its constituent words.

The Cue dictionary was compiled on the basis of statistical data and refined by linguistic criteria. Initial statistical data were obtained from 100 documents of the heterogeneous corpus for which target extracts had been prepared. A concordance program provided the following statistics for each word: frequency (number of occurrences in the corpus), dispersion (number of documents in which the word occurred), and selection ratio (ratio of number of occurrences in extractor-selected sentences to number of occurrences in all sentences of the corpus) (see [4]).

The following classes were then defined and listed by a computer program: Null candidates—dispersion greater than a chosen threshold and selection ratio between two chosen thresholds; Bonus candidates—selection ratio above the upper threshold; Stigma candidates—selection ratio below the lower threshold; and Residue—dispersion less than the threshold and selection ratio between the thresholds.

These categories were modified in three further steps. First, since most of the counterintuitive assignments occurred with low-frequency words, certain words were reclassified on this basis as Residue. Second, the statistics for 20 documents of the chemistry corpus were examined, and those additional words that exceeded a frequency threshold were also assigned, according to their selection ratio, to the Bonus, Stigma, and Null dictionaries. The final Cue dictionary contained 139 Null words, 783 Bonus words, and 73 Stigma words. The Null dictionary was created to list words excluded from the Key and Title glossaries, which are discussed next. Furthermore, it constituted a reservoir of common words that might, upon further research, be transferred to the Bonus or Stigma dictionaries.

Linguistic analysis of the experimental data revealed the following classes of Cue words: Null—ordinals, cardinals, the verb "to be," prepositions, pronouns, adjectives, verbal auxiliaries, articles, and coordinating conjunctions; Bonus—comparatives, superlatives, adverbs of conclusion, value terms, relative interrogatives, causality terms; Stigma—anaphoric expressions, belittling expressions, insignificant-detail expressions, hedging expressions; and Residue—positives, technical terms, and archaic terms.

2. *Key Method.* The principle (but not the algorithm) of the Key method is like the one first proposed by Luhn for creating automatic extracts (see [6]). Its

machine-recognizable clues are certain specific characteristics of the body of the given document. It is based on the hypothesis that high-frequency content words are positively relevant.

The Key method compiles a Key glossary for each document, ideally consisting of topic words statistically selected from the body of that document. The words comprising a Key glossary were selected by listing all words not in the Cue dictionary in order of decreasing frequency of occurrence in the document. The frequencies were cumulated, from the highest downward, to a given percent of the total number of word occurrences in the document. Non-Cue words with frequencies above this threshold were designated Key words and were assigned positive weights equal to their frequency of occurrence in the document. The final Key weight of a sentence is the sum of the Key weights of its constituent words.

Initially, Key words were defined as non-Cue words of the highest Cue-weighted sentences, and their Key weights were taken to be their frequency of occurrence in that set. In the final system, Key words were chosen from a given percent of the total number of words in the document, and their Key weights were taken to be their frequency of occurrence over all words in the document. It was felt that the change from a fixed threshold to a fractional threshold was an improvement because of increased coverage and flexibility. Moreover, both statistical and linguistic investigations have supported the shift from the narrower environment of high Cue-weighted sentences to the wider environment of all text words.

3. *Title Method.* In the Title method the machine-recognizable clues are certain specific characteristics of the skeleton of the document, i.e. title, headings, and format. The Title method is based on the hypothesis that an author conceives the title as circumscribing the subject matter of the document. Also, when the author partitions the body of the document into major sections he summarizes it by choosing appropriate headings. The hypothesis that words of the title and headings are positively relevant was statistically accepted at the 99 percent level of significance.

The Title method compiles, for each document, a Title glossary consisting of all non-Null words of the title, subtitle, and headings for that document. Words in the Title glossary are assigned positive weights. The final Title weight for each sentence is the sum of the Title weights of its constituent words.

The weights assigned to the words of a Title glossary were determined on the basis of their effect in the combined weighting scheme of the four methods. Content words of the title were given heavier weights than content words of the headings. However, the initial assignment of weights led to a difficulty in the ranking of all sentences of the document when the Title method was used, since one weight was an exact multiple of the other, and this caused many ties among sentence weights. To minimize the occurrence of ties, title words were assigned a weight relatively prime to that of heading words.

4. *Location Method.* In the Location method the machine-recognizable clues are certain general characteristics of the corpus provided by the skeletons of documents, i.e. headings and format. The Location method is based on the hypotheses that: (1) sentences occurring under certain headings are positively relevant; and (2) topic sentences tend to occur very early or very late in a document and its paragraphs. These location characteristics of sentences were tested for correlation with selection ratios, and statistically derived weights were assigned to reflect the

probable relevance of sentences according to their occurrence under certain headings and their position in a document and a paragraph.

The Location method uses the prestored Heading dictionary of selected words of the corpus that appear in headings of documents, e.g. "Introduction," "Purpose," "Conclusions." In addition to assigning positive weights provided by the Heading dictionary, the Location method also assigns positive weights to sentences according to their ordinal position in the text, i.e. in first and last paragraphs, and as first and last sentences of paragraphs. The final Location weight for each sentence is the sum of its Heading weight and its Ordinal weight.

To investigate the importance of headings for a sentence, all words occurring in the headings of 100 documents of the heterogeneous corpus and 20 documents of the chemistry corpus were listed, excluding prepositions, articles, and highly specific words. A set of words was common to both corpora, and a selection ratio was computed for each. Selection ratios were found to confirm the intuitive appraisal of heading-word importance. Weights proportional to the selection ratios were then assigned to each of these heading words, and the remaining heading words were assigned the same weights as their synonyms in that set. Deletions were made on the basis of low frequency and unrelatedness to the desired information types (i.e. subject, purpose, method, conclusion, generalization, recommendation). The resulting Heading dictionary contained 90 words.

To investigate the importance of sentence position—both within a paragraph and in the document as a whole—300 sentences were randomly picked from the heterogeneous corpus, and selection ratios computed. These data were used as the basis for the assignment of Ordinal weights to the positional characteristics of a sentence according to whether it occurred in the first paragraph, last paragraph, and as first sentence, or last sentence. Intermediate sentences and paragraphs were assigned zero weights. The final weights adopted reflected the gross behavior of the above selection ratios.

Rationale of the Basic Methods. Extracting clues may come from two structural sources: (1) the *body* (text) of the document; and (2) the *skeleton* (title, headings, format) of the document. Also, clues may come from two linguistic sources: (1) *general* characteristics of the corpus and language (e.g. value-judgment words); and (2) *specific* characteristics of the individual documents (e.g. high-frequency words).

The two structural sources and the two linguistic sources of clues yielded four opportunities to create basic methods of automatic extracting which were defined simply by the class of clues upon which they rely. When applied to word clues this classification yielded four distinct word lists. These distinctions and standardizations of terminology permitted the following convenient classification of the four methods and their corresponding word lists (see Figure 3).

EXPERIMENTAL CYCLES. Seventeen experiments were performed in the course of the research to verify the significance of the various extracting clues, to refine the Cue and Heading dictionaries, to adjust weights, to reprogram the four basic methods, to improve the output format, and to evaluate the extracting methods (singly and in all possible combinations).

In the final system the relative weights among the four basic methods were parameterized in terms of the linear function

$$a_1C + a_2K + a_3T + a_4L$$

		Structural Sources of Clues:	
		Body of Document (Text)	Skeleton of Document (Title, Headings, Format)
Linguistic Sources of Clues:	General Characteristics of Corpus	CUE METHOD: Cue Dictionary (995 words) (Includes Bonus, Stigma, and Null subdictionaries)	LOCATION METHOD: Heading Dictionary (90 words) (Location method also uses ordinal weights)
	Specific Characteristics of Document	KEY METHOD: Key Glossary	TITLE METHOD: Title Glossary

FIG. 3. Rationale of the four basic methods

where $a_1, a_2, a_3,$ and a_4 are the parameters (positive integers) for the Cue, Key, Title, and Location weights, respectively. Moreover the length parameter P was modified so that it can be adjusted to any integral percent of the number of sentences in a document. Thus by means of a single program card, the values of $a_1, a_2, a_3, a_4,$ and P can be specified as desired. Also, the 7090-7094 system was modified to extract documents of 4000 words instead of 3000 words (as initially programmed).

SELECTION OF PREFERRED METHOD. The percent of the number of sentences coselected in both the automatic and the target extracts was computed for each of the extracting methods, separately and in combination. The mean percentages for the most interesting methods are shown in Figure 4, with the intervals encompassing the sample mean plus and minus one sample standard deviation. The corresponding percentages for the random extracts (i.e. a random selection of 25 percent of the sentences) and the automatic extracts are given for comparison. The Cue-Title-Location method is seen to have the highest mean coselection score, while the Key method in isolation is the lowest of the automatic methods.

On the basis of these data it was decided to omit the Key method as a component in the preferred extracting system. These data confirm the hypothesis set forth

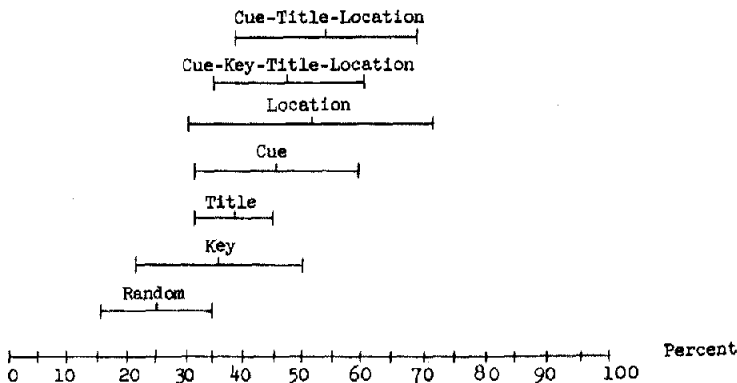
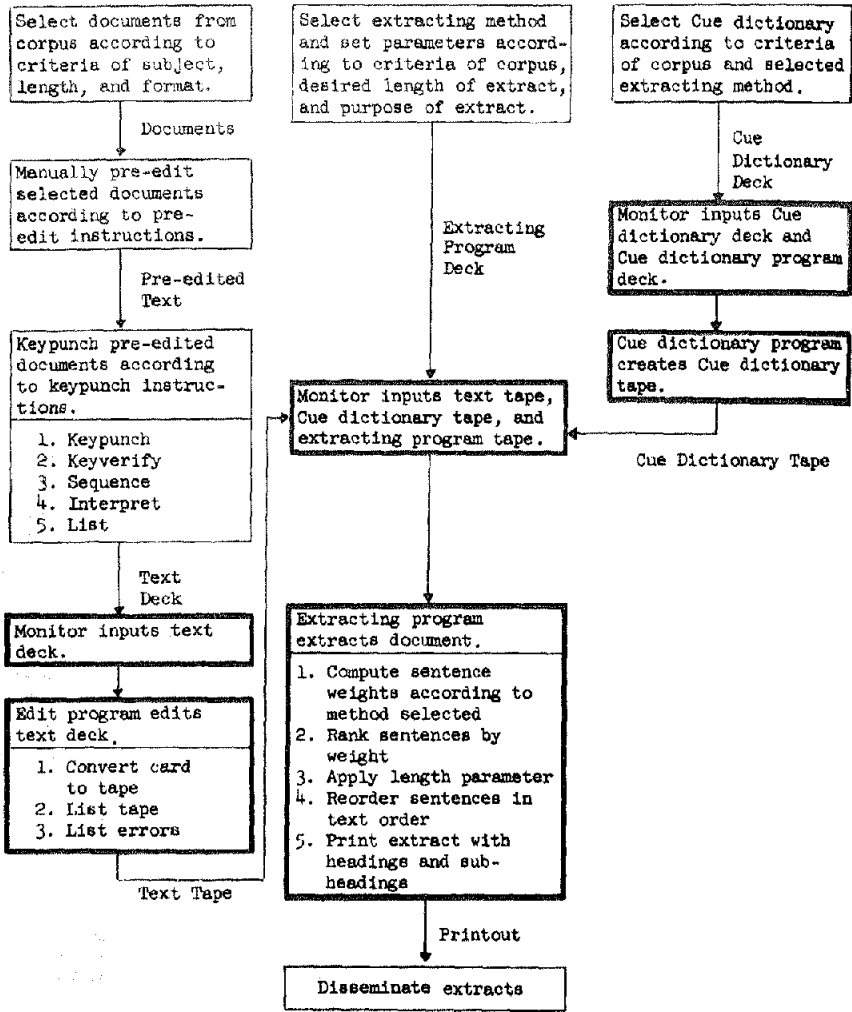


FIG. 4. Mean coselection scores of the methods



Note: Heavy boxes denote computer operations

FIG. 5. Extracting system

preedited according to preedit instructions, which cover the problems of formatting, graphics, special symbols, special alphabets, etc. Figure 6 shows a preedited document. The notations used are defined and discussed in [1].

Keypunching. The keypunch instructions are based on the preedit instructions and are subject to the conditions imposed by present input and output hardware. They contain rules and examples of sufficient generality to cover a wide variety of textual situations.

Edit Program. The edit program creates the text tape used by the extracting program. Text written in free format is punched on cards according to the keypunch instructions. The edit program interprets these cards, recognizing title, headings, author, paragraph boundaries, sentence boundaries, number of sentences in document, punctuation, capitalization, etc. The program also recognizes input errors, which are then printed together with a vertical listing of text described below.

~~PHILLIPS PETROLEUM COMPANY - RESEARCH DEPARTMENT - REPORT~~~~SPECIAL REPORT~~~~NAVY CONTRACT NO. 33-133-C, Amendment 7~~

SA EVALUATION OF THE EFFECT OF DIMETHYLAMINE BORINE AND SEVERAL OTHER ADDITIVES ON COMBUSTION STABILITY CHARACTERISTICS OF VARIOUS HYDROCARBON TYPE FUELS IN PHILLIPS MICROBURNER 4/AD57739/4

* * * * * R. L. Brace

S U M M A R Y

At the request of the Navy Bureau of Aeronautics, Phillips Petroleum Company undertook the evaluation of dimethylamine borine as an additive for improving the combustion characteristics of aviation gas turbine type fuels. Because of the small amount (100 grams) of dimethylamine borine received from Callery Chemical Company, this evaluation has been limited to the measurement of its effect on the flash-back characteristics of three pure hydrocarbons (toluene, normal heptane and benzene) in the Phillips Microburner. Dimethylamine borine concentrations of from 0.1 to 1.0 per cent by weight were evaluated.

For comparative purposes two common ignition additives (amyl nitrate and cumene hydroperoxide) were also evaluated during this study, as well as concentrations up to 20 per cent by weight of propylene oxide - a relatively high flame velocity fuel. Previous studies in Phillips 2 inch turbojet engine type combustor had indicated that such materials could substantially increase the maximum rate of heat release attainable, especially with low performance fuels such as the iso paraffin type hydrocarbons - particularly when operating under severe conditions for combustion (i.e., high air flow velocity or low combustion pressure).

The assumption has been made in this fuel evaluation that the greater the allowable heat input rate for a given velocity, the greater the degree of combustion stability. On this basis, the data indicate that all the additive materials tested caused an increase in stability performance; a fuel of relatively low performance such as toluene being benefited to a greater extent than a high performance fuel such as normal heptane. These data are in agreement with previous additive studies by Phillips. With respect to the dimethylamine borine, its effect as a fuel additive was noteworthy; 0.1 weight per cent in toluene being equivalent to 20 per cent by weight of added propylene oxide. In general, additive concentrations of one per cent by weight in the several pure hydrocarbons which normally differed quite widely in performance, produced uniformly superior combustion stability characteristics as measured using the Phillips Microburner.

I. INTRODUCTION

#5 At the request of the Navy Bureau of Aeronautics the Jet Fuels Group has evaluated the effects of the addition of small amounts of dimethylamine borine ((CH₃)₂NH:BR₃) on the combustion stability performance of several hydrocarbon fuels. The dimethylamine borine was supplied to Phillips by the Callery Chemical Company.

Due to the small quantity of this material obtained the evaluation was conducted in the Phillips Microburner (Model 1A) which is a slightly modified version of the original Phillips Microburner (Model 1).

Fig. 6. Preedited document (cont'd on next page)

Cue Dictionary Program. The Cue dictionary program creates a Cue dictionary tape to be used by the extracting program when it is identifying Cue words and compiling the Key and Title glossaries. The input to the program consists of at most 1000 words and their weights; the words are punched one word per card and must be in alphabetical order. The output consists of a binary tape containing only one record, in which each entry takes four computer words. Certain input errors can be detected, and these, as well as a BCD listing of the Cue dictionary, are printed on an output tape.

PROCESSING STEPS

Cue Method:

1. Compare each word of text with Cue dictionary.

II. A DESCRIPTION OF PHILLIPS MICROBURNER (MODEL 1A)

The design of the original Phillips Microburner (Model 1) was discussed in detail in Reference 1. The only significant change in burner detail was the substitution of a #30 LeRoy Lettering Pen for the #3 LeRoy pen fuel nozzle in the Model 1. The details of the Model 1A are shown in Figure 1.

#30

#33

III. DESCRIPTION OF TEST APPARATUS

The fuel system on the Phillips Microburner (Model 1) was designed so as to handle small quantities of highly corrosive substances. In the present evaluation it was not necessary to consider the effect of corrosion, consequently a continuous flow system providing greater flexibility and easier handling was incorporated which requires only slightly more fuel per test than the original. This new system includes a source of nitrogen gas, a surge tank, a pressurized fuel tank, a small capacity Brooks Rotameter and a flow control valve.

The air heater circuit was modified so as to include a mercury relay and bi-metallic thermostat thus providing automatic air temperature control.

The details of these modifications and of the test apparatus are shown in schematic in Figure 2.

IV. DESCRIPTION OF TEST FUELS

The chemical and physical properties of the hydrocarbon fuels tested are summarized in Table I. These fuels represent variations in chemical structure which will in turn provide indices of both good and poor combustion stability performance.

The additives evaluated, dimethylamine borane, propylene oxide, amyl nitrate, cumene hydroperoxide, were blended into the hydrocarbon fuel by weight in concentrations ranging from 0.1 to 20 per cent.

V. TEST PROCEDURE

The conditions at which this study was made in the Microburner (model 1A) were:

Air Pressure	20 psig
Inlet Air Temperature	300 ± 20 F
Fuel Pressure	30 psig
Fuel Flow x 10 ⁴	3.85 to 6.82 pps
Air Flow x 10 ⁴	3.77 to 6.69 pps

Once the air temperature was established the air flow was set at the desired rate and the fuel turned on. Ignition of the then fuel-rich mixture was accomplished by applying a lighted, portable propane torch to the top of the burner tube. The fuel flow was then gradually decreased until the flame holding at the burner tube rim flashed back into the tube. At the point of flashback the following were recorded:

- ← Cold Air Temperature
- ← Inlet Air Temperature
- ← Air Rotameter Reading
- ← Fuel Rotameter Reading

After checking the point at least once more the air flow was increased another increment and the process repeated.

FIG. 6 (continued)

2. Tag all Bonus words with weight $b > 0$, all Stigma words with weight $s < 0$, all Null words with weight $n = 0$.
3. Compute Cue weight C of each sentence by summing its Cue word weights $b, s,$ and n .
4. Rank all sentences in decreasing weight order.
5. Select sentences whose rank order is less than length parameter P percent of the number of sentences in the document.
6. Select all headings.
7. Merge selected sentences under their proper headings.
8. Output title, authors, and results of step 7.

Key Method:

1. Compare each word of text with Cuc dictionary.
2. Create table of distinct, nonmatching text words (as Key-word candidates).
3. Compute frequency k of each Key-word candidate.
4. Sort table in decreasing frequency order.
5. Create a Key glossary from all Key-word candidates whose total frequency (when summed in decreasing frequency order) exceeds threshold of W percent of the total number of word occurrences in document.
6. Compare each text word with Key glossary, and tag each matching word with weight k equal to its frequency of occurrence in text.
7. Compute Key weight K of each sentence by summing its Key-word weights k .
8. Rank all sentences in decreasing weight order.
9. Select sentences whose rank order is less than length parameter P .
10. Select all headings.
11. Merge selected sentences under their proper headings.
12. Output title, authors, and results of step 11.

Title Method:

1. Compare each word of title and headings with Null dictionary.
2. Create a Title glossary of nonmatching words.
3. Tag all words of Title glossary that come from title with weight t_1 . Tag all words that come only from the subtitle or heading with weight t_2 .
4. Compare each word of text with Title glossary. Tag each matching word with corresponding weight, t_1 or t_2 .
5. Compute Title weight T of each sentence by summing its word weights.
6. Rank all sentences in decreasing weight order.
7. Select sentences whose rank order is less than length parameter P .
8. Select all headings.
9. Merge selected sentences under their proper headings.
10. Output title, authors, and results of step 9.

Location Method:

1. Compare each word of headings with Heading dictionary.
2. Tag each matching word with weight h given in Heading dictionary.
3. Compute Heading weight H of each heading by summing its Heading-word weights h .
4. Tag each sentence with Heading weight H of its heading.
5. Tag each sentence of first paragraph with Ordinal weight O_1 and of last paragraph with Ordinal weight O_2 . Tag first sentence of every paragraph with Ordinal weight O_3 and last sentence of every paragraph with Ordinal weight O_4 .
6. Compute Ordinal weight O of each sentence by summing its Ordinal weights O_1, O_2, O_3 , and O_4 .
7. Compute Location weight L of each sentence by summing its Heading weight H and Ordinal weight O .
8. Rank all sentences in decreasing weight order.
9. Select all sentences whose rank order is less than length parameter P .
10. Select all headings.

11. Merge selected sentences under their proper headings.
12. Output title, authors, and results of step 11.

Combined Methods. The four basic methods described above yield 15 combined methods that have in common the following sequence of steps:

1. Select desired values for parameters a_1 , a_2 , a_3 , a_4 , and P .
2. Compute total weight $a_1C + a_2K + a_3T + a_4L$ of each sentence by summing its weighted single-method weights C , K , T , L .
3. Rank all sentences in decreasing weight order.
4. Select sentences whose rank order is less than length parameter P .
5. Select all headings.
6. Merge selected sentences under their proper headings.
7. Output title, authors, and results of step 6.

OUTPUT PROCEDURES

Extracting Output. An extract of a document can be produced by any combination of the four basic methods of calculating sentence weights. The extracting output is an extract containing the following information: document number, methods used to produce the extract, title of the document, author(s) of the document, all headings (identified by zero as a sentence number), and the selected sentences (all tagged with paragraph and sentence number). Figure 7 shows an automatic extract produced by the combined Cue-Title-Location method.

Research Output

1. *Key-word lists.* Two lists of Key words for the document are printed, one in frequency order and the other in alphabetical order.

2. *Sentence-weight lists.* Two lists are printed, giving each sentence number in the document and its computed weight. One is in sentence order and the other in weight order. The weight is the sum resulting from the method or methods used.

3. *Vertical listing.* A list is printed, one word to a line, of every word (of the document) in text order together with punctuation before (open quotation mark, open parenthesis, initial capitalization, etc.), first punctuation after (comma, hyphen, period, etc.), second punctuation after (hyphen, closed parenthesis, closed quotation mark, etc.), paragraph number, sentence number within the paragraph, word number within the sentence, Cue weight, Key weight, and Title weight. After the last word of each sentence is printed, the Cue, Key, Title, and Location weights for that sentence are printed.

TIME AND COST FACTORS. Automatic extracts were produced by the combined Cue-Title-Location method at a minimum rate of 7800 words per minute on a corpus of 29,500 words. After the first 4000 words the rate increases linearly with the size of the corpus.

The total system cost (edit, extracting, output) was approximately 1.5 cents per word; keypunching costs (including verification) accounted for two-thirds of this. The above times and costs concern the present research only and should not be misinterpreted in connection with the question of the economic feasibility of automatic extracting.

Outlook

This research should be regarded as an interim report. Nonetheless, the direction of future investigation and the problems to be investigated next are becoming clearer.

PAR SENT 1 DOCUMENT NUMBER 6 PAGE 1
 ABSTRACT BASED ON CUE TITLE LOC. HTS.
 EVALUATION OF THE EFFECT OF DIMETHYLAMINE BORINE AND SEVERAL OTHER ADDITIVES ON COMBUSTION STABILITY CHARACTERISTICS
 OF VARIOUS HYDROCARBON TYPE FUELS IN PHILLIPS MICROBURNER (AD87730)
 R. L. BRACE

- 1 0 SUMMARY
- 2 1 AT THE REQUEST OF THE NAVY BUREAU OF AERONAUTICS, PHILLIPS PETROLEUM COMPANY UNDERTOOK THE EVALUATION OF DIMETHYLAMINE BORINE AS AN ADDITIVE FOR IMPROVING THE COMBUSTION CHARACTERISTICS OF AVIATION GAS TURBINE TYPE FUELS.
- 2 2 BECAUSE OF THE SMALL AMOUNT (100 GRAMS) OF DIMETHYLAMINE BORINE RECEIVED FROM CALLERY CHEMICAL COMPANY, THIS EVALUATION HAS BEEN LIMITED TO THE MEASUREMENT OF ITS EFFECT ON THE FLASH-BACK CHARACTERISTICS OF THREE PURE HYDROCARBONS (TOLUENE, NORMAL HEPTANE AND BENZENE) IN THE PHILLIPS MICROBURNER.
- 3 2 PREVIOUS STUDIES IN PHILLIPS 2 INCH TURBOJET ENGINE TYPE COMBUSTOR HAD INDICATED THAT SUCH MATERIALS COULD SUBSTANTIALLY INCREASE THE MAXIMUM RATE OF HEAT RELEASE ATTAINABLE, ESPECIALLY WITH LOW PERFORMANCE FUELS SUCH AS THE ISO PARAFFIN TYPE HYDROCARBONS—PARTICULARLY WHEN OPERATING UNDER SEVERE CONDITIONS FOR COMBUSTION (I.E., HIGH AIR FLOW VELOCITY OR LOW COMBUSTION PRESSURE).
- 4 1 THE ASSUMPTION HAS BEEN MADE IN THIS FUEL EVALUATION THAT THE GREATER THE ALLOWABLE HEAT INPUT RATE FOR A GIVEN VELOCITY, THE GREATER THE DEGREE OF COMBUSTION STABILITY.
- 4 2 ON THIS BASIS, THE DATA INDICATE THAT ALL THE ADDITIVE MATERIALS TESTED CAUSED AN INCREASE IN STABILITY PERFORMANCE, A FUEL OF RELATIVELY LOW PERFORMANCE SUCH AS TOLUENE BEING BENEFITED TO A GREATER EXTENT THAN A HIGH PERFORMANCE FUEL SUCH AS NORMAL HEPTANE.
- 4 5 IN GENERAL, ADDITIVE CONCENTRATIONS OF ONE PER CENT BY WEIGHT IN THE SEVERAL PURE HYDROCARBONS WHICH NORMALLY DIFFERED QUITE WIDELY IN PERFORMANCE, PRODUCED UNIFORMLY SUPERIOR COMBUSTION STABILITY CHARACTERISTICS AS MEASURED USING THE PHILLIPS MICROBURNER.
- 5 0 I. INTRODUCTION
- 6 1 AT THE REQUEST OF THE NAVY BUREAU OF AERONAUTICS THE JET FUELS GROUP HAS EVALUATED THE EFFECTS OF THE ADDITION OF SMALL AMOUNTS OF DIMETHYLAMINEBORIN -5 ON THE COMBUSTION STABILITY PERFORMANCE OF SEVERAL HYDROCARBON FUELS.
- 7 1 DUE TO THE SMALL QUANTITY OF THIS MATERIAL OBTAINED THE EVALUATION WAS CONDUCTED IN THE PHILLIPS MICROBURNER (MODEL 1A) WHICH IS A SLIGHTLY MODIFIED VERSION OF THE ORIGINAL PHILLIPS MICROBURNER (MODEL 1).
- 8 0 II. DESCRIPTION OF PHILLIPS MICROBURNER (MODEL 1A)

10	0	III. DESCRIPTION OF TEST APPARATUS
14	0	IV. DESCRIPTION OF TEST FUELS
17	0	V. TEST PROCEDURE
21	0	VI. RESULTS
25	0	VII. DISCUSSION
29	1	PREVIOUS WORK CONDUCTED IN THE PHILLIPS 2 INCH COMBUSTOR (REF. 2) INDICATED THAT SOME ADDITIVES CAUSED A SIGNIFICANT INCREASE IN THE PERFORMANCE OF A LOW RATING FUEL WHILE THESE SAME ADDITIVES DID NOT SUBSTANTIALLY EFFECT THE HIGHER RATING FUELS.
31	3	ALL FOUR ADDITIVES INDICATED THEIR ADDITION TO BE SUBJECT TO THE EFFECT OF DEMINISHING RESULTS UPON FURTHER ADDITION--THAT IS, THEIR EFFECT WAS NOT ESSENTIALLY A BLENDING EFFECT.
33	0	VIII. CONCLUSIONS
34	1	1. THE ADDITION OF DIMETHYLAMINE BORINE IN CONCENTRATIONS OF ONE PER CENT BY WEIGHT TO JET FUEL TYPE HYDROCARBONS RESULTED IN A UNIFORMLY HIGH LEVEL OF COMBUSTION STABILITY PERFORMANCE AS MEASURED BY PHILLIPS MICROBURNER.
35	1	2. THE ADDITION OF RELATIVELY LARGE AMOUNTS OF PROPYLENE OXIDE TO TOLUENE WERE NECESSARY TO PROVIDE SIGNIFICANT IMPROVEMENT IN STABILITY PERFORMANCE AS INDICATED BY INCREASES IN ALLOWABLE HEAT INPUT RATES.
36	1	3. THE ADDITION OF ADDITIVE CONCENTRATIONS (UP TO 1 PER CENT) OF AMYL NITRATE, CUMENE HYDROPEROXIDE, AND DIMETHYLAMINE BORINE ALL RESULTED IN IMPROVED STABILITY PERFORMANCE. THE GREATEST INCREASES WERE SHOWN WHEN BLENDED WITH A FUEL OF POOR PERFORMANCE CHARACTERISTICS--SUCH AS TOLUENE.
37	0	IX. RECOMMENDATIONS
38	1	BASED ON THE EVALUATION OF THE EFFECTS OF ADDITIVES ON THE FLASHBACK LIMITS OF THE ADDITIVE-FUEL BLENDS TESTED IN THE MICROBURNER (MODEL 1A) IT IS RECOMMENDED THAT DIMETHYLAMINE BORINE SHOULD BE FURTHER INVESTIGATED.
38	2	THIS FUTURE WORK SHOULD INCLUDE STUDY OF COMBUSTION STABILITY AND COMBUSTION EFFICIENCY EFFECTS IN THE PHILLIPS 2 INCH COMBUSTOR AND AN INVESTIGATION OF ITS INFLUENCE ON COMBUSTION CLEANLINESS.

Fig. 7. Automatic extract

It is now beyond question that future automatic abstracting methods must take into account syntactic and semantic characteristics of the language and the text: they cannot rely simply upon gross statistical evidence.

It is believed that the research methodology outlined here has been, and will continue to be, fruitful. Future research should adhere to the principle of parameterization to gain flexibility and permit continuing improvement of abstracting methods. The present set of weights is subject to continuing experimentation to permit maximum specification of desired content of automatic extracts. Even now ways can be conceived to reduce both the number and size of experimental cycles with more powerful statistical and computational techniques.

It is highly desirable that the extracting system be modified to accommodate longer documents (in fact it has been reprogrammed for the UNIVAC 1103A to accommodate documents of approximately 40,000 words). To reduce operating time and costs, ways to make the programs more efficient should be investigated. Reprogramming can help, but the greatest need for improvement is in the method of inputting text. In this connection it is also important to devise ways of automatically capturing chemical and mathematical symbols in machine form. Clearly there are extracting clues that have not yet been exploited—in captions of figures and tables, in footnotes and references, and in larger linguistic structures such as phrases and clauses. Better ways must be sought to identify those specific characteristics of documents that are significant for automatic extracting (such as presence or lack of headings, technical or literary content, etc.) and to correlate these characteristics with some combination of extracting method, set of weights, and length parameter that will give better automatic extracts.

Further investigation of methods of evaluating automatic extracts is needed to increase their speed, simplicity, and discrimination. Future research should involve sharper statistical analysis of the two types of error with the purpose of modifying the program to minimize them. Study should be made to discover machine-recognizable clues to determine the proper length of an extract. The extent to which redundancy appears in automatic extracts and ways of minimizing it should be investigated. Linguistic clues to coherence should be identified and expressed in machine-recognizable form, perhaps in the form of a word-and-phrase dictionary indicating the need for selecting antecedent sentences. In summary, the main differences between manual and automatic extracts can now be described and procedures outlined to minimize them.

Although automatic extracts of the future may differ both in content and appearance from traditionally composed manual abstracts, these differences do not appear as insuperable barriers to their usefulness. In spite of the recognized problems it is now felt that automatic extracts can be defined, programmed, and produced in an operational system to supplement, and perhaps compete with, traditional ones.

ACKNOWLEDGMENTS. The author especially acknowledges the work of his colleagues Mr. J. L. Kuhns, who conducted mathematical and linguistic research; Dr. P. L. Garvin, who assisted in dictionary compilation; Mrs. L. Ertel and Mr. D. Dwiggins, who performed the programming; and Mrs. J. Brewer, who conducted the content analysis.

REFERENCES

1. Automatic abstracting. RADC-TDR-63-93, TRW Computer Div., Thompson-Ramo-Wooldridge, Inc., Canoga Park, Calif., Feb. 1963.

2. EDMUNDSON, H. P. Problems in automatic abstracting. *Comm. ACM* 7, 4 (Apr. 1964), 259-263.
3. EDMUNDSON, H. P., AND WYLLYS, R. E. Automatic abstracting and indexing—survey and recommendations. *Comm. ACM* 4, 5 (May 1961), 226-234.
4. Final report on the study for automatic abstracting. C107-1U12, Thompson-Ramo-Wooldridge, Inc., Canoga Park, Calif., Sept. 1961.
5. KUHN, J. L. An application of logical probability to problems in automatic abstracting and information retrieval. Joint Man-Computer Indexing and Abstracting, Sess. 13, First Congress on the Information System Sciences, Nov. 1962.
6. LUHN, H. P. The automatic creation of literature abstracts. *IBM J. Res. Develop.* 2, 2 (1959), 159-165.
7. RATH, G. J., RESNICK, A., AND SAVAGE, T. R. Comparisons of four types of lexical indicators of content. *Amer. Docum.* 12, 2 (Apr. 1961), 126-130.

RECEIVED JULY, 1968