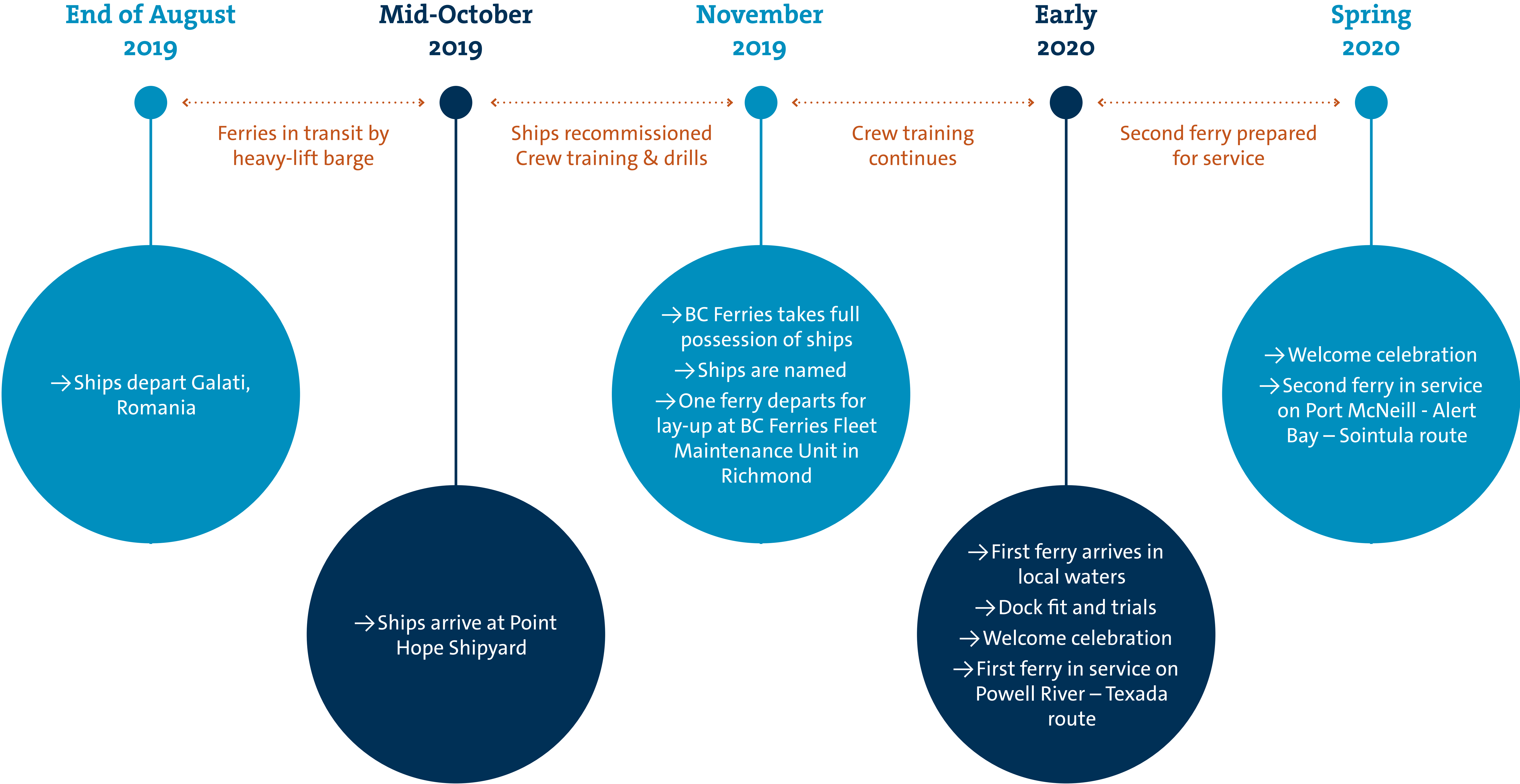


# Bringing the Island Class Ferries into Service – A Timeline



# Ship Stats



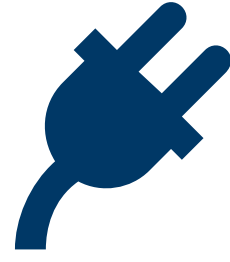
Carries 47 Vehicles



Uses hybrid diesel-electric technology, some of the most advanced, clean marine technology in the world

# 300

Licensed for up to 300 passengers and crew



Flexibility for full electric operation in the future



Designed for local weather and tide conditions



Low energy consumption & uses ultra low-sulphur fuel



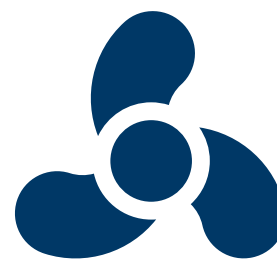
14 knots service speed



Minimizes underwater radiated noise & wake wash



Double-ended for easy loading and unloading

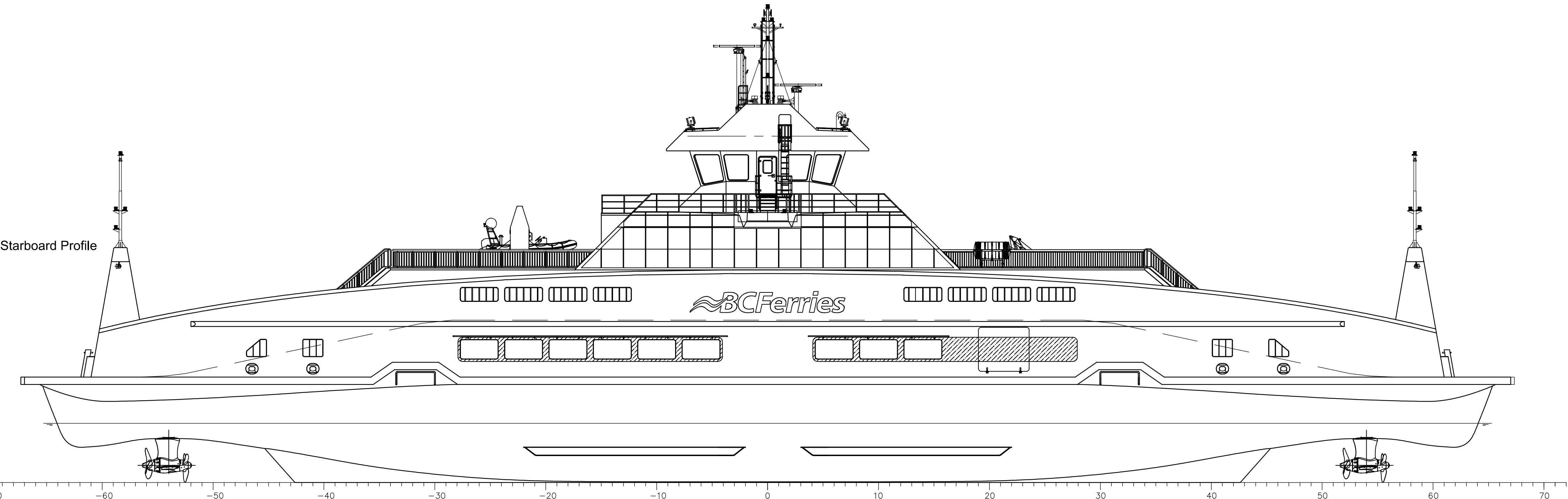
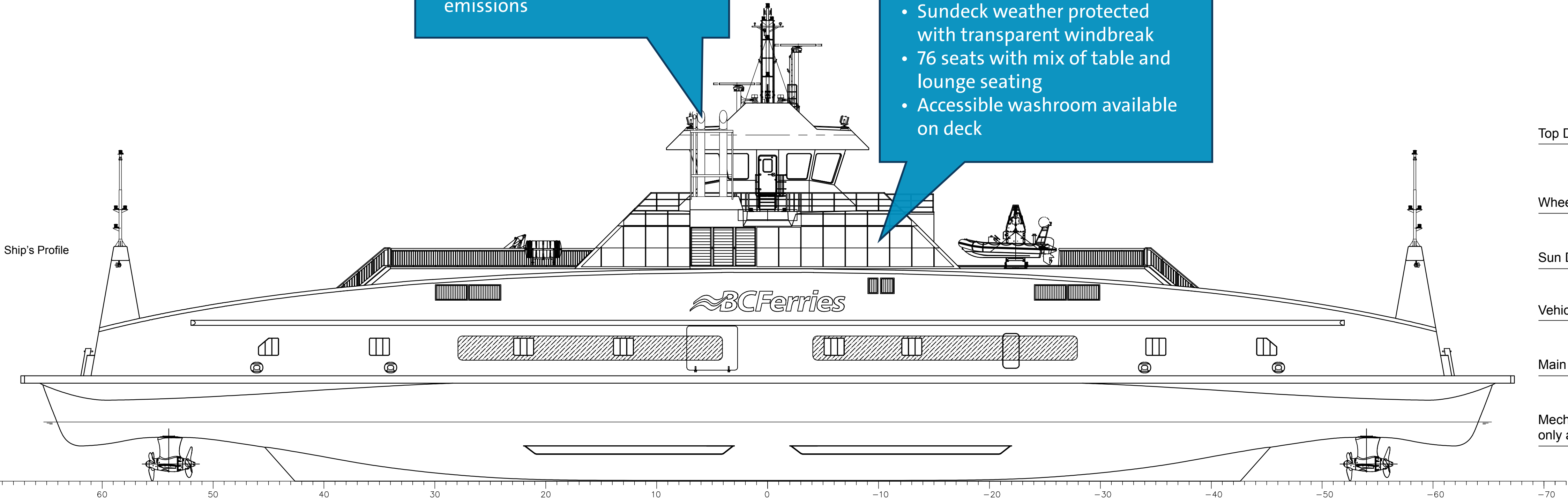


Dual propellers for maneuverability

# Ship Profile and Deck Layout

- Exhaust vents placed high and directed off side of vessel away from passenger and crew areas
- Hybrid diesel-electric battery technology will reduce emissions

- Easy access to sundeck via staircase & stair lift
- Sundeck weather protected with transparent windbreak
- 76 seats with mix of table and lounge seating
- Accessible washroom available on deck



Top Deck - Deck 6 (Crew only area)

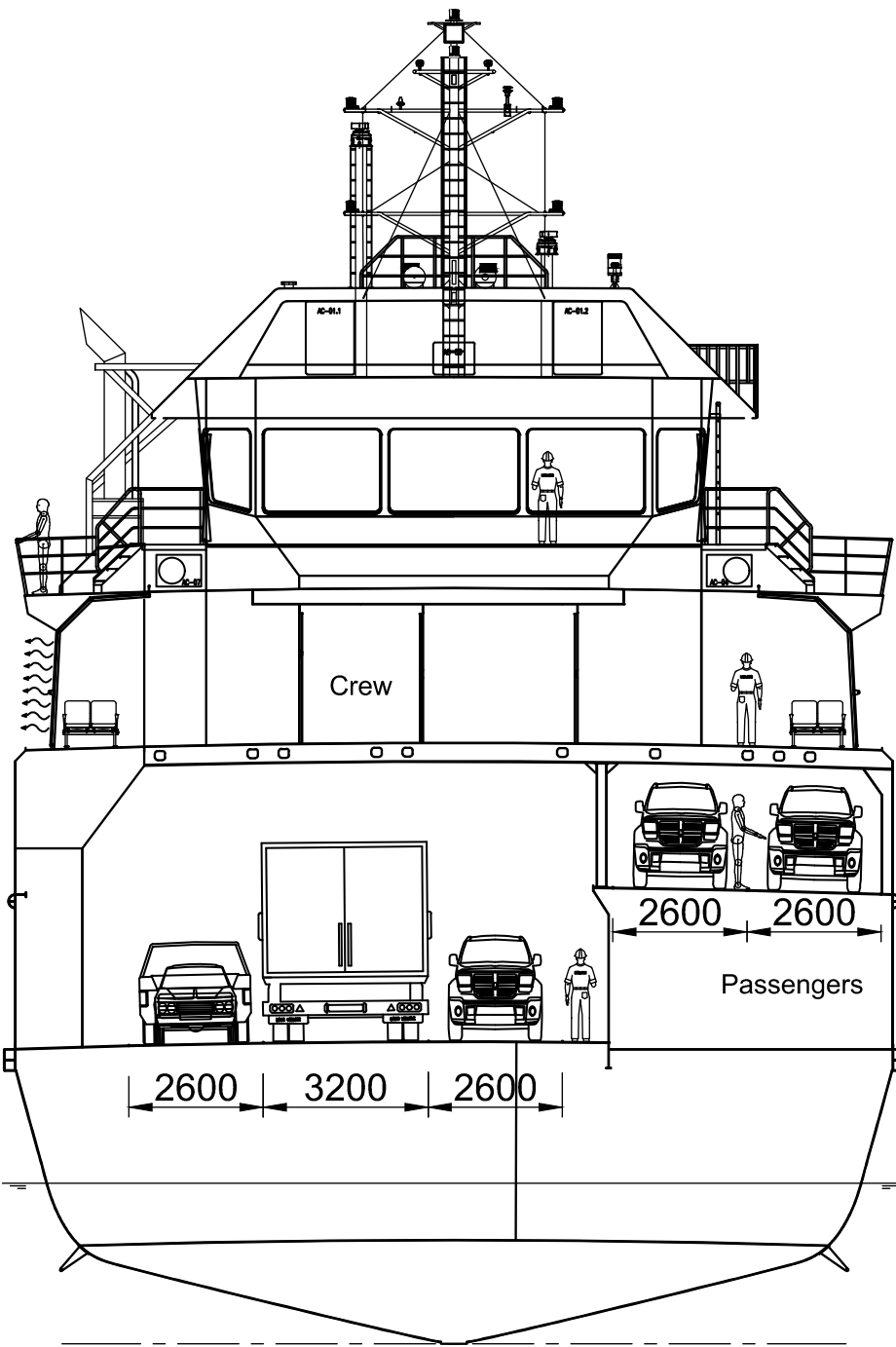
Wheelhouse - Deck 5 (Crew only area)

Sun Deck - Deck 4

Vehicle Gallery Deck - Deck 3

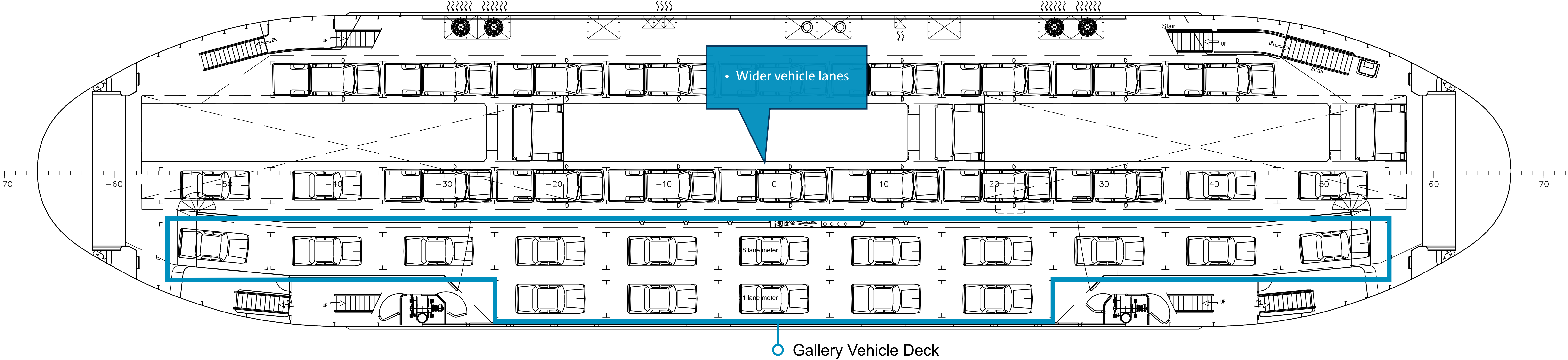
Main Deck - Deck 2

Mechanical Space - Deck 1 (Crew only area)



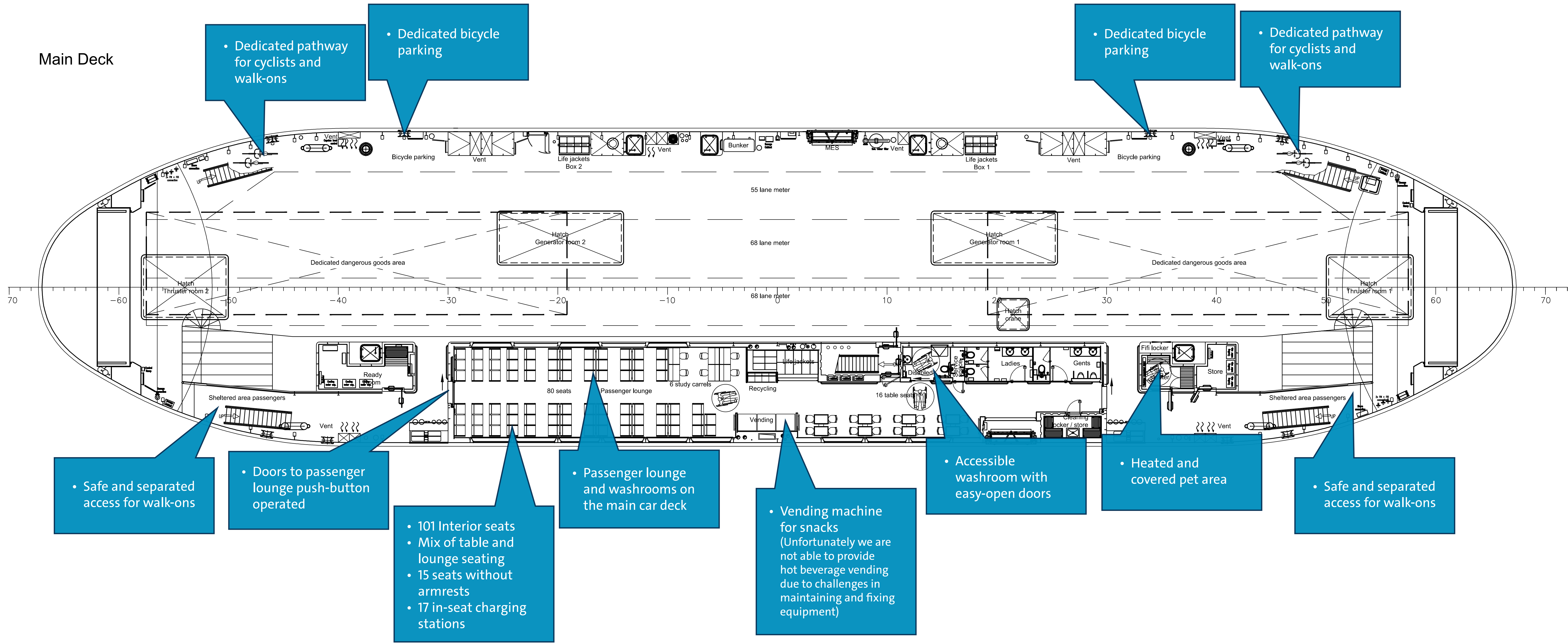
# Vehicle Deck

Vehicle Deck Layout



# Main Deck

Main Deck



- Dedicated pathway for cyclists and walk-ons

- Dedicated bicycle parking

- Dedicated bicycle parking

- Dedicated pathway for cyclists and walk-ons

- Safe and separated access for walk-ons

- Doors to passenger lounge push-button operated

- 101 Interior seats
- Mix of table and lounge seating
- 15 seats without armrests
- 17 in-seat charging stations

- Passenger lounge and washrooms on the main car deck

- Vending machine for snacks (Unfortunately we are not able to provide hot beverage vending due to challenges in maintaining and fixing equipment)

- Accessible washroom with easy-open doors

- Heated and covered pet area

- Safe and separated access for walk-ons

# Say farewell to the North Island Princess!



Leave a message here.

# Building the Island Class Ferries

## Steel Cutting



Reps from BC Ferries & Damen Shipyards getting ready for the ceremony



Getting ready to cut the first piece of steel for the new ships



The build begins!

## Keel Laying



Reps from BC Ferries & Damen Shipyards getting ready for the ceremony



A Canadian coin becomes part of the new vessels

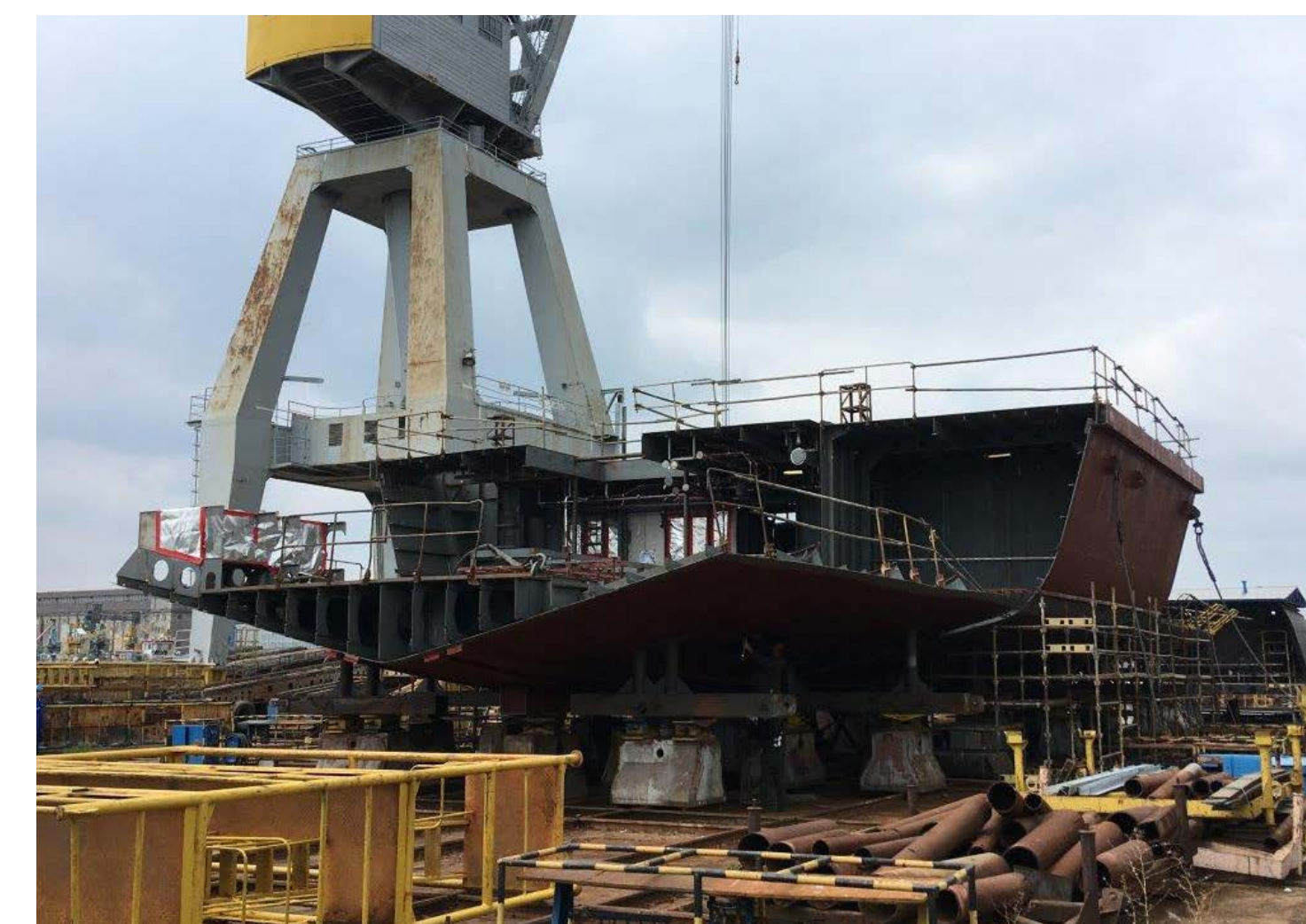


Sealing the coin inside the keel

## Hull Construction



Hull structure



Hull pieces coming together



Hull pieces in place

# Building the Island Class Ferries

## Placing Sections



A section of the keel is dropped in place



Craning a section of hull into place

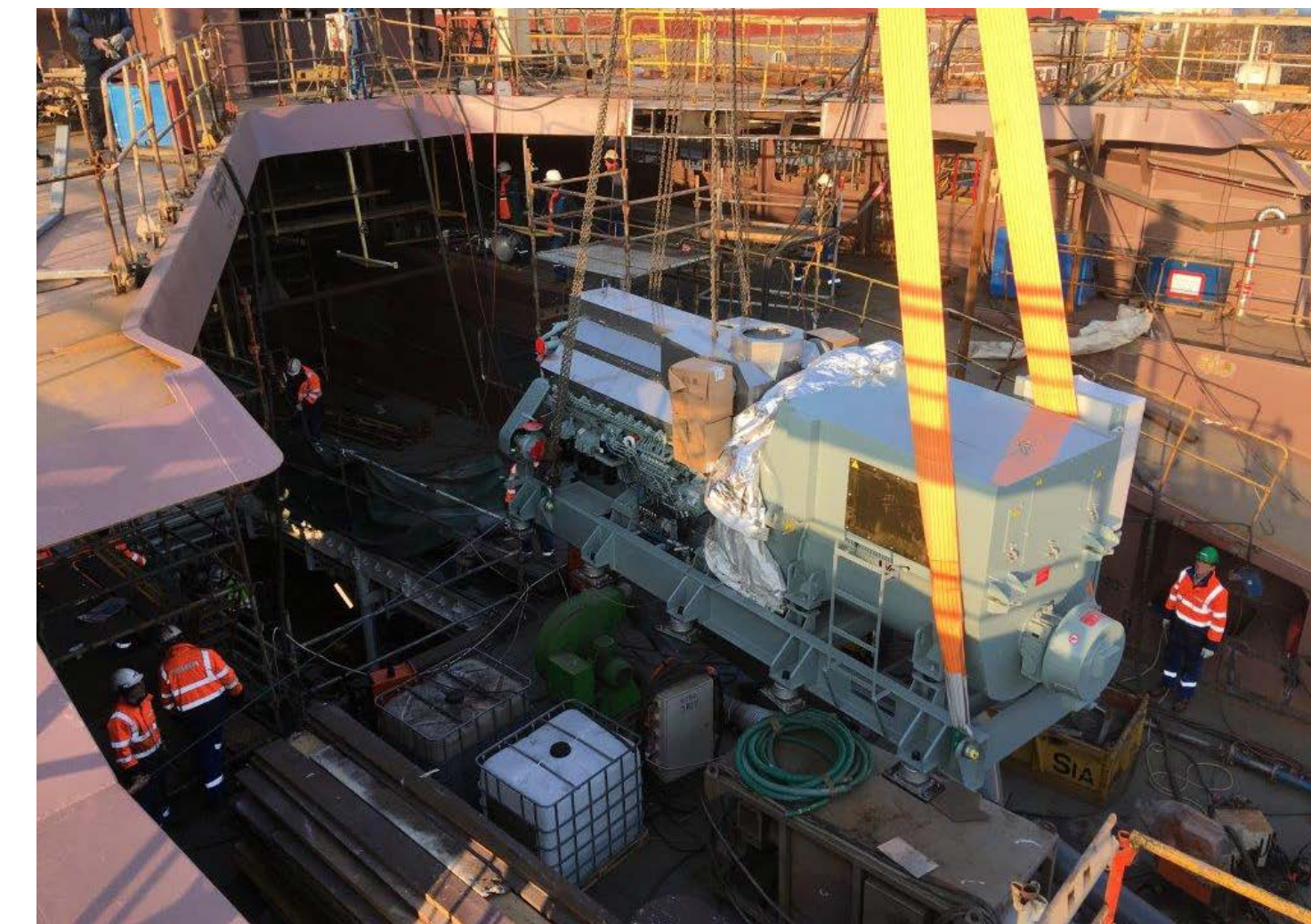


A second section of keel goes into place

## Assembling the Pieces



Wheelhouse



Main generator



Pieces together

## Launching the Hulls



A hull ready for launch



Preparing for launch

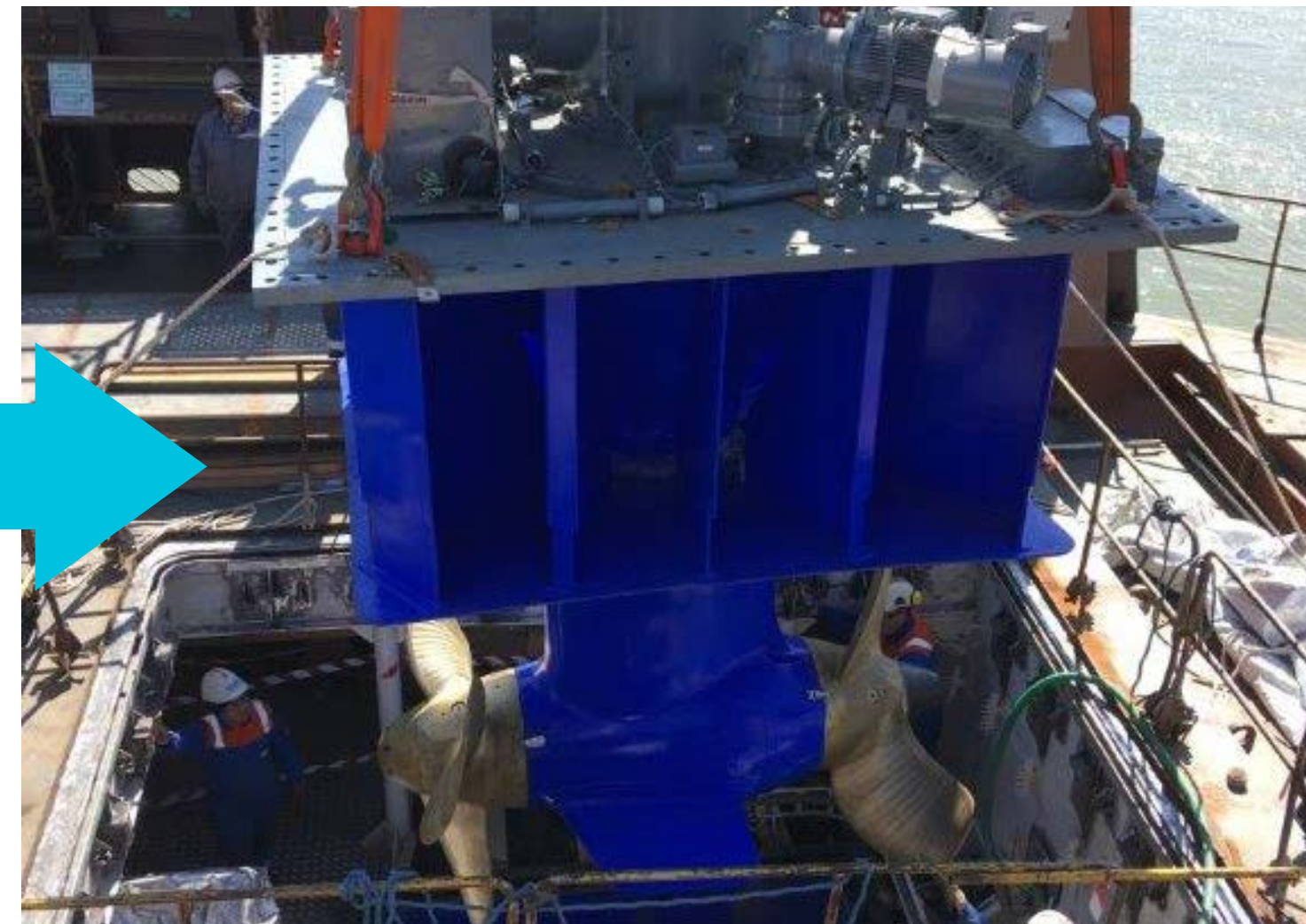


In she goes!

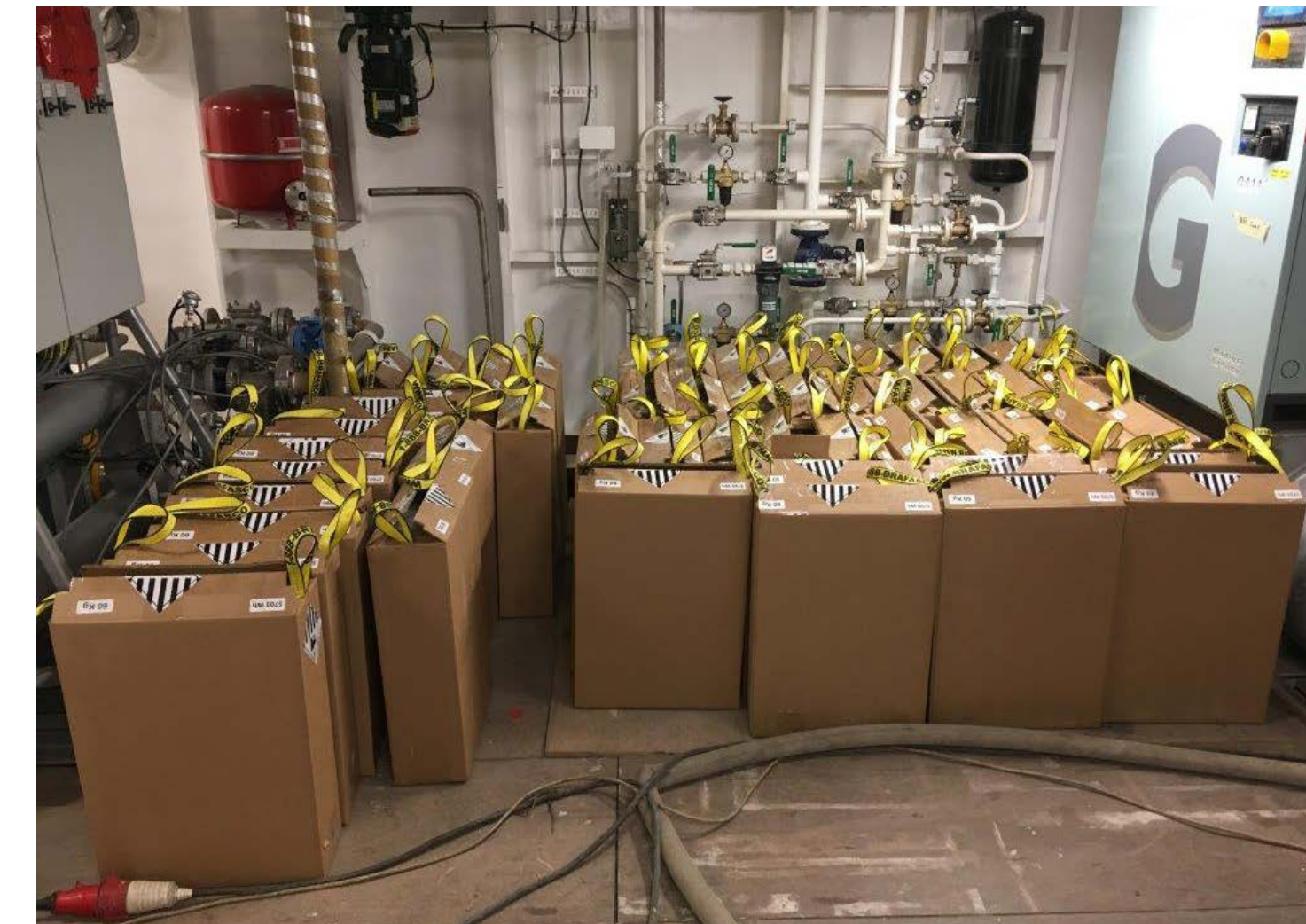


# Building the Island Class Ferries

Putting the  
Final Pieces in  
Place



Getting the thrusters in place



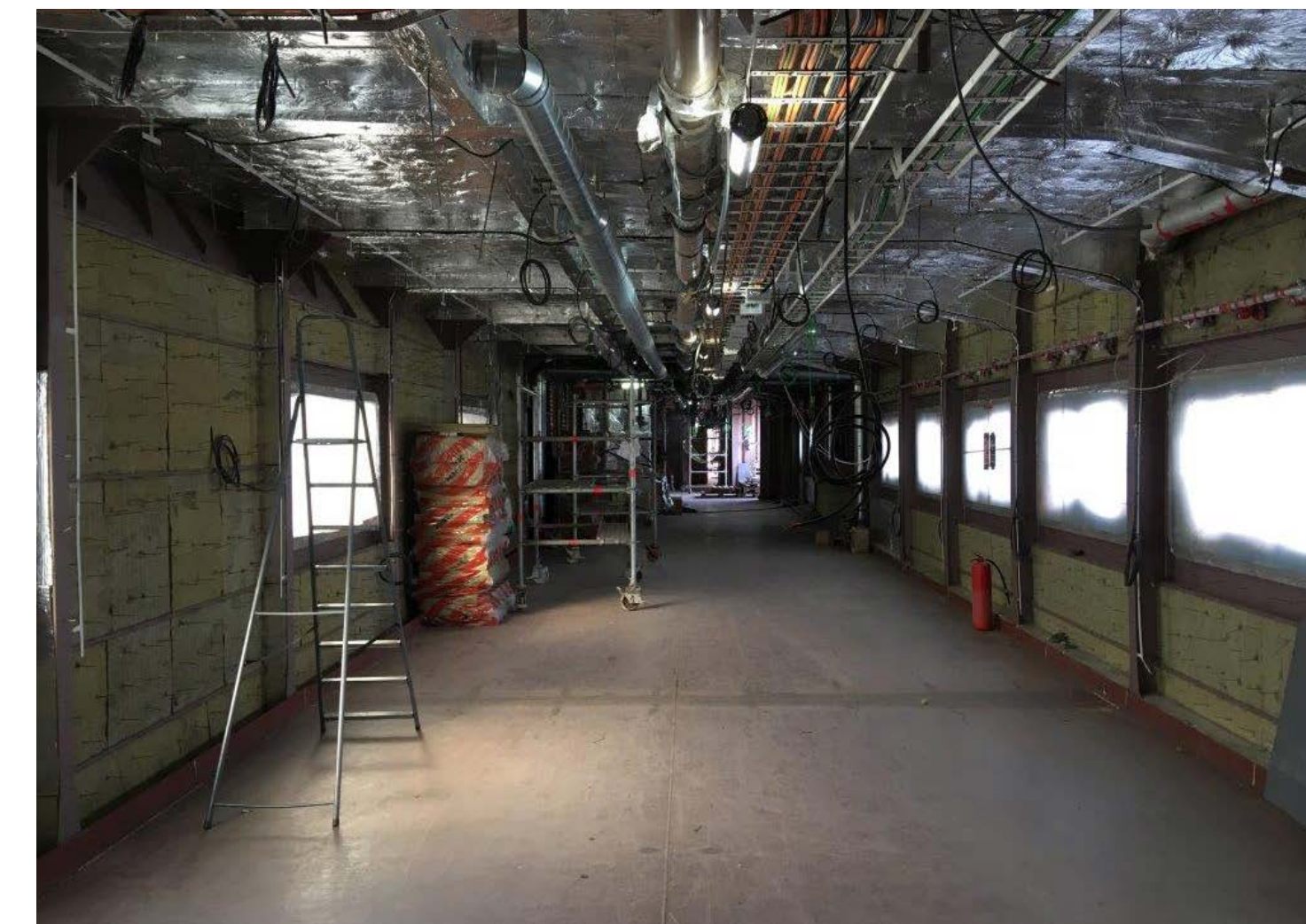
Getting the batteries installed



Getting the Engine Room Ready



Installing the navigation equipment



Passenger Lounge Area



Learning to Drive in the Simulator