

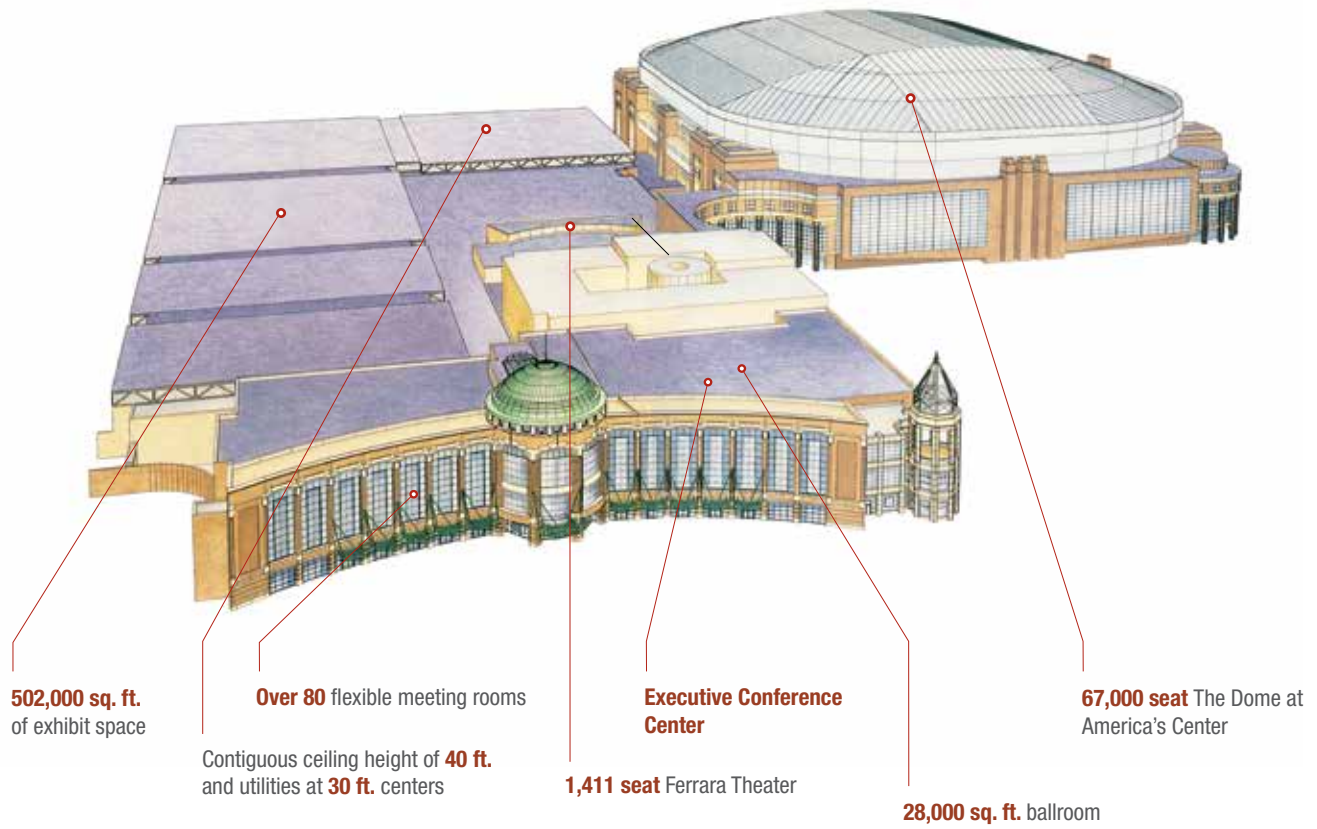


America's Center

Convention Complex

America's Center

Totals 500,000 sq. ft. of contiguous exhibit space.



LEVEL 1

100 Complex (7 Rooms)

ROOM #	DIMENSIONS	TOTAL SQ. FT.	CEILING HEIGHT	THEATRE	CLASSROOM	BANQUET
100	50'x49'	2,695	13'11"	243	146	120
101	55'x44'	2,420	13'11"	208	126	120
102	55'x46'	2,530	13'11"	220	126	120
103	56'x46'	2,576	13'11"	220	126	120
104	55'x44'	2,420	13'11"	208	126	120
105	55'x49'	2,695	13'11"	243	146	120
106	43'x36'	1,548	13'11"	112	72	60
Corridor	21'x141'	2,961	13'11"	-	-	-
COMPLEX TOTALS		19,845		1,454	868	780

NOTES: Movement of portable walls provides a combination of rooms in the 100 complex.

** Six (6) 2x2 columns in complex.

120 Complex (8 Rooms)

ROOM #	DIMENSIONS	TOTAL SQ. FT.	CEILING HEIGHT	THEATRE	CLASSROOM	BANQUET
120	45'x55'	2,475	13'11"	192	170	120
121	45'x29'	1,305	13'11"	96	90	60
122	45'x29'	1,305	13'11"	96	90	60
123	45'x56'	2,520	13'11"	200	170	120
124	45'x56'	2,520	13'11"	200	170	120
125	45'x29'	1,305	13'11"	96	90	60
126	45'x29'	1,305	13'11"	96	90	60
127	45'x55'	2,475	13'11"	192	170	120
COMPLEX TOTALS	90'x171'	15x210		1,168	723	720

NOTES: Movement of portable walls provides a combination of rooms in the 120 complex.

130 Complex (3 Rooms)

ROOM #	DIMENSIONS	TOTAL SQ. FT.	CEILING HEIGHT	THEATRE	CLASSROOM	BANQUET
130	75'x55'	4,125	13'11"	408	264	220
131	75'x55'	4,425	13'11"	416	272	220
132	75'x56'	4,200	13'11"	425	276	220
COMPLEX TOTALS	75'170'	12,750		1,249	812	660

NOTES: Movement of portable walls provides a combination of rooms in the 130 complex.

140 Complex (6 Rooms)

ROOM #	DIMENSIONS	TOTAL SQ. FT.	CEILING HEIGHT	THEATRE	CLASSROOM	BANQUET
140	55'x36'	1,980	9'0"/13'0"	122	88	100
141	51'x42'	2,142	9'0"/13'0"	150	104	110
142	55'x37'	2,035	9'0"/13'0"	153	92	110
143	51'x42'	2,142	9'0"/13'0"	150	104	110
144	55'x31'	1,705	9'0"/13'0"	107	83	80
145	55'x49'	2,695	9'0"/13'0"	173	93	120
COMPLEX TOTALS		12,699		855	564	630

NOTES: Movement of portable walls provides a combination of rooms in the 140 complex.

** Seven (7) columns in complex.

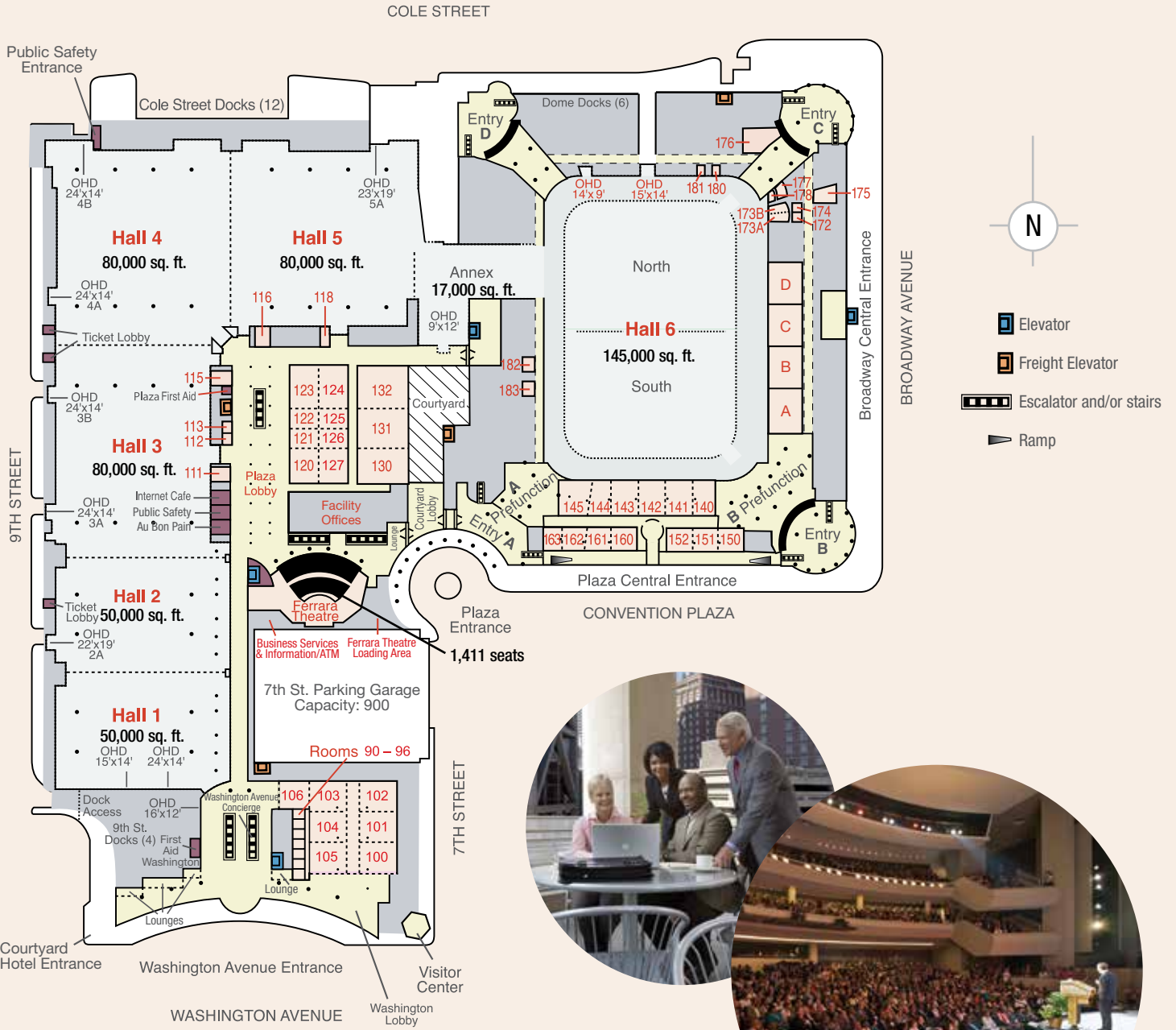
150 Complex (3 Rooms)

ROOM #	DIMENSIONS	TOTAL SQ. FT.	CEILING HEIGHT	THEATRE	CLASSROOM	BANQUET
150	38'x39'	1,482	12'0"/13'6"	72	48	70
151	38'x39'	1,444	13'6"	72	48	70
152	37'x38'	1,406	11'6"/13'6"	75	56	80
COMPLEX TOTALS		4,332		219	152	220

NOTES: Movement of portable walls provides a combination of rooms in the 150 complex.

** Three (3) columns in complex.

LEVEL 1



160 Complex (4 Rooms)

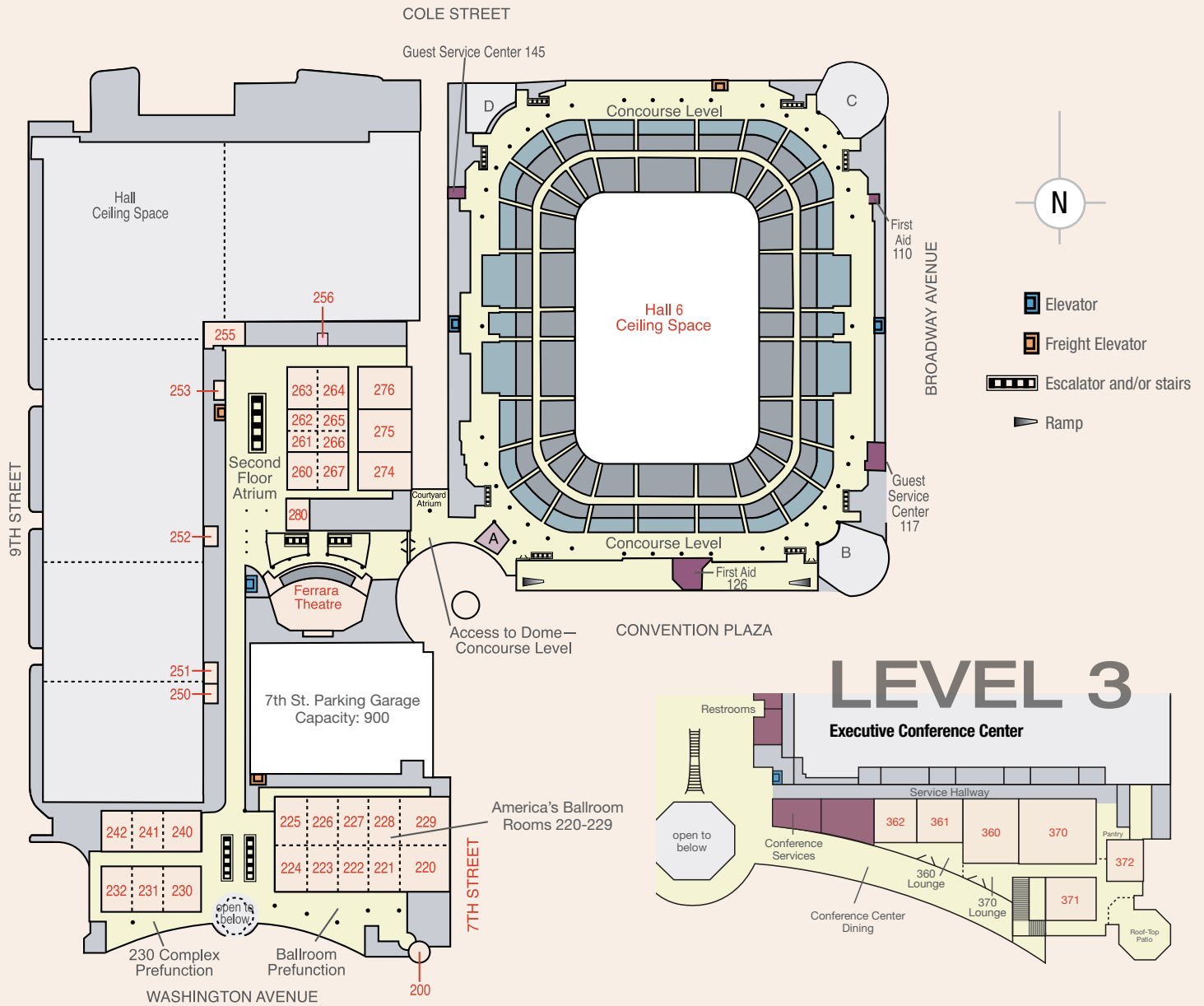
ROOM #	DIMENSIONS	TOTAL SQ. FT.	CEILING HEIGHT	THEATRE	CLASSROOM	BANQUET
160*	37'x38'	1,406	11'6"/13'6"	83	56	80
161*	38'x38'	1,444	13'6"	72	48	70
162	38'x34'	1,292	13'6"	60	48	50
163	38'x33'	1,254	13'6"	55	41	50
COMPLEX TOTALS		5,396		270	193	250

NOTES: Movement of portable walls provides a combination of rooms in the 160 complex.
 * Rooms 160 and 161 are not available during a Dome seated event.
 ** Four (4) columns in complex.

Offices/Small Breakouts

ROOM #	# OF ROOMS	SQ. FT.	CEILING HEIGHT
90 Series	7	196-240	8'11"
Plaza Perimeter Rooms	6		
111		690	9'11"
112		182	9'11"
113		182	9'11"
115		660	9'11"
116		660	9'11"
118		364	9'11"

LEVEL 2



LEVEL 2

200 (1 Room)

ROOM #	DIMENSIONS	TOTAL SQ. FT.	CEILING HEIGHT	THEATRE	CLASSROOM	BANQUET
200	29' Diameter	660	14'	-	-	-

NOTES: Show Office, Speaker Ready Room, glass enclosed, etc.

220 Complex (10 Rooms): America's Ballroom

ROOM #	DIMENSIONS	TOTAL SQ. FT.	CEILING HEIGHT	THEATRE	CLASSROOM	BANQUET
220	62'x43'	2,666	25'11"/33'10"	291	152	140
221	62'x44'	2,728	25'11"/33'10"	283	152	140
222	62'x44'	2,728	25'11"/33'10"	283	152	140
223	62'x44'	2,728	25'11"/33'10"	283	152	140
224	62'x44'	2,604	25'11"/33'10"	221	116	130
225	62'x44'	2,604	25'11"/33'10"	221	116	130
226	62'x44'	2,728	25'11"/33'10"	283	152	140
227	62'x44'	2,640	25'11"/33'10"	283	144	130
228	62'x44'	2,728	25'11"/33'10"	283	152	140
229	62'x43'	2,666	25'11"/33'10"	291	152	140

COMPLEX TOTALS	27,625	2,722	1,440	1,370-1,700
----------------	--------	-------	-------	-------------

NOTES: This has ballroom style appointments, extra high ceilings and 6 spot lighting galleries. Movement of portable walls provides a combination of rooms in the 220 Complex.

230 Complex (3 Rooms)

ROOM #	DIMENSIONS	TOTAL SQ. FT.	CEILING HEIGHT	THEATRE	CLASSROOM	BANQUET
230	59'x43'	2,537	12'11"	216	128	120
231	51'x44'	2,244	12'11"	198	112	120
232	27'x44'	2,508	12'11"	216	128	120
COMPLEX TOTALS		7,289		630	368	360

NOTES: Movement of portable walls provides a combination of rooms in the 230 complex.

240 Complex (3 Rooms)

ROOM #	DIMENSIONS	TOTAL SQ. FT.	CEILING HEIGHT	THEATRE	CLASSROOM	BANQUET
240	60'x43'	2,580	13'	265	136	140
241	53'x44'	2,332	13'	220	128	120
242	59'x45'	2,655	13'	265	138	120
COMPLEX TOTALS		7,567		630	400	380

NOTES: Movement of portable walls provides a combination of rooms in the 240 complex.



250 Series (6 Rooms)

ROOM #	DIMENSIONS	TOTAL SQ. FT.	CEILING HEIGHT	THEATRE	CLASSROOM	BANQUET
250	18'x29'	522	8'11"	-	-	20
251	18'x27'	486	8'11"	-	-	20
252	19'x28'	532	8'11"	-	-	20
253	14'x24'	336	8'11"	-	-	20
255	29'x58'	1,682	8'11"	-	-	100
256	14'x14'	196	8'11"	-	-	10

NOTES: Rooms 250, 251, 252 and 255 have windows which overlook the exhibit hall floor. Room 255 has a private restroom.

Second Floor Atrium (Lobby)

ROOM #	DIMENSIONS	TOTAL SQ. FT.	CEILING HEIGHT	THEATRE	CLASSROOM	BANQUET
-	270'x88'	23,760	20'6"/25'8"	-	-	1,000

NOTES: Stairs/escalators located in center of Second Floor Atrium. Reception capacity 1,700.

260 Series (8 Rooms)

ROOM #	DIMENSIONS	TOTAL SQ. FT.	CEILING HEIGHT	THEATRE	CLASSROOM	BANQUET
260	45'x55'	2,475	14'	192	118	120
261	45'x28'	1,260	14'	96	59	60
262	45'x28'	1,260	14'	96	58	60
263	45'x55'	2,475	14'	192	118	120
264	45'x55'	2,475	14'	192	118	120
265	45'x28'	1,260	14'	96	59	60
266	45'x28'	1,260	14'	96	59	60
267	45'x55'	2,475	14'	192	118	120

NOTES: Movement of portable walls provides a combination of rooms in the 260 Complex.

270 Series (3 Rooms)

ROOM #	DIMENSIONS	TOTAL SQ. FT.	CEILING HEIGHT	THEATRE	CLASSROOM	BANQUET
274	75'x54'	4,050	14'	408	256	220
275	75'x57'	4,275	14'	416	261	220
276	75'x53'	3,975	14'	391	232	220

280 (1 Room)

ROOM #	DIMENSIONS	TOTAL SQ. FT.	CEILING HEIGHT	THEATRE	CLASSROOM	BANQUET
280	40'x29'	1,160	13'11"	84	55	60

LEVEL 3

Executive Conference Center (6 Rooms)

ROOM #	TOTAL SQ. FT.	HOLLOW SQUARE	THEATRE	CLASSROOM	ROUNDS	U-SHAPE
360	1,266	32	65	48	42	24
361	592	20	40	24	24	14
362	585	20	40	24	24	14
360 Lounge	668	-	-	-	-	-
370	1,756	40	100	72	72	28
371	676	20	40	28	30	18
372	500	16	30	16	24	12
370 Lounge Dining	1,756	-	-	-	-	-
	3,520	-	-	-	-	-





Why St. Louis?



- St. Louis is a place where history and imagination collide, and the result is a destination like no other. In the heart of a revitalized downtown, a vibrant new hospitality district continues to grow.
- More than \$5 billion has been spent to update the city's tourism infrastructure, transforming it into a must-see destination for visitors and meeting/convention attendees.
- The \$380 million renovation of the grounds surrounding the iconic Gateway Arch, brings new life, greenspaces, and event venues along the riverfront.
- St. Louis is serviced by more than 450 flight arrivals and departures daily and is conveniently located in the heart of the U.S. making the destination easily accessible for meetings delegates throughout the country.
- St. Louis Lambert International Airport sits just minutes from downtown with easy access to interstates and the convenient MetroLink light rail system that delivers meeting attendees to the convention corridor.
- The downtown area boasts more than 7,000 hotel rooms near the America's Center Convention Complex with 38,000 hotel rooms in the metro area.
- Beyond the America's Center Convention Complex, the downtown area plays host to 20 hotels with meeting space and many exciting event facilities including City Museum, Ballpark Village and the National Blues Museum.
- St. Louis is a world-recognized hub for life sciences and innovation.
- St. Louis is home to many top universities, including Washington University and Saint Louis University; 17 Fortune 1,000 companies and nine Fortune 500 companies; and highly specialized centers for innovation including the Donald Danforth Plant Science Center and the expanding Cortex Innovation Community.
- With some of the finest hotels, restaurants, museums and entertainment venues, St. Louis is truly a great choice for your next meeting or event.

DOWNTOWN ST. LOUIS

LEGEND

-  Urgent Care
-  Metrolink Stop
-  Downtown Trolley
-  Visitor Center

HOTEL

ENTERTAINMENT DISTRICT



MISSISSIPPI RIVER



explore **st.louis**

701 Convention Plaza, Suite 300 | St. Louis, Missouri 63101
800.325.7962 | 314.421.1023 | 314.342.5036 (facilities)
www.explorestlouis.com | meetings@explorestlouis.com