



**National Survey Results
2020 General Election Likely Voters
Political Environment, Trends & Analysis**

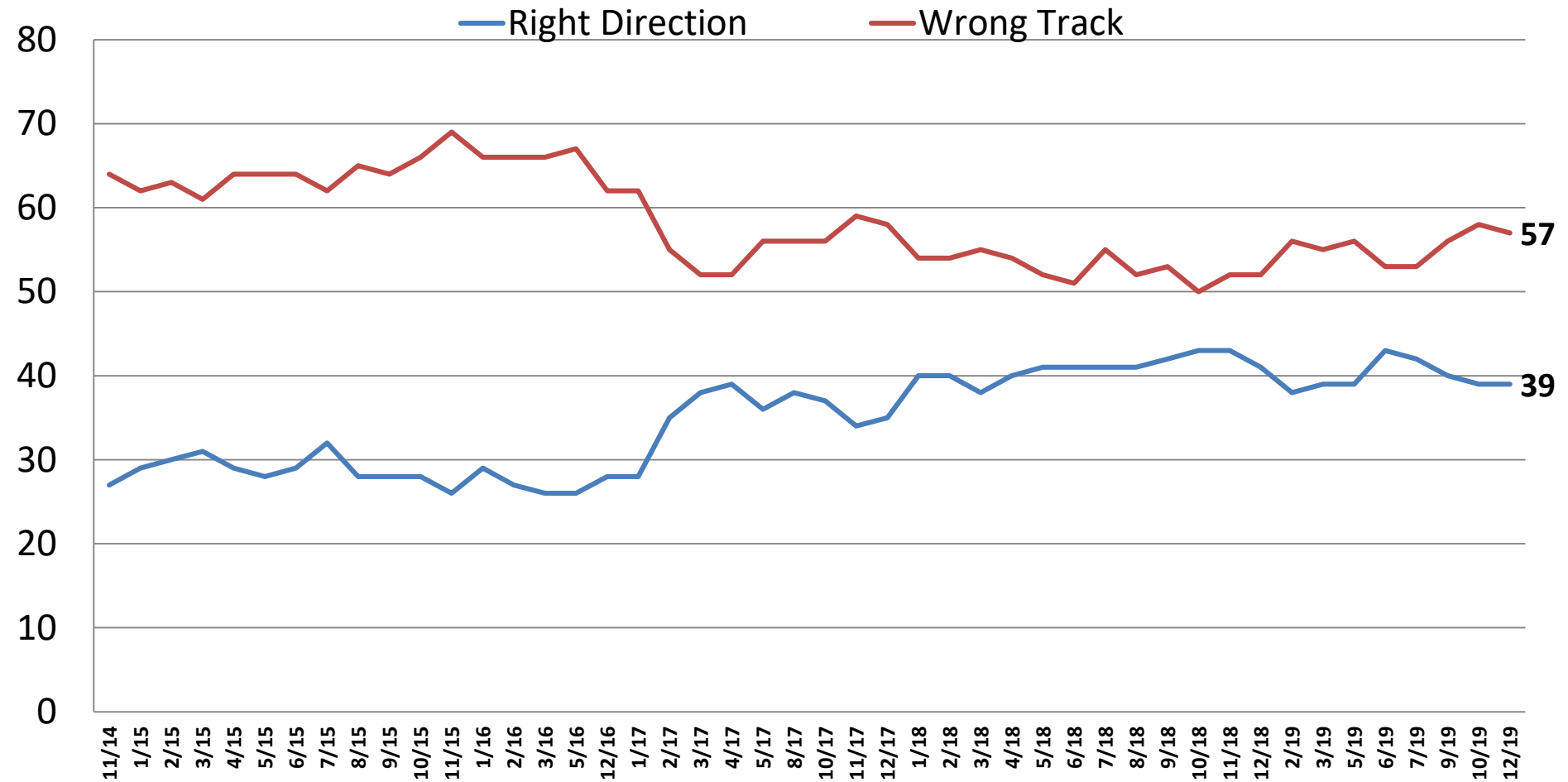
December 2019

On the web

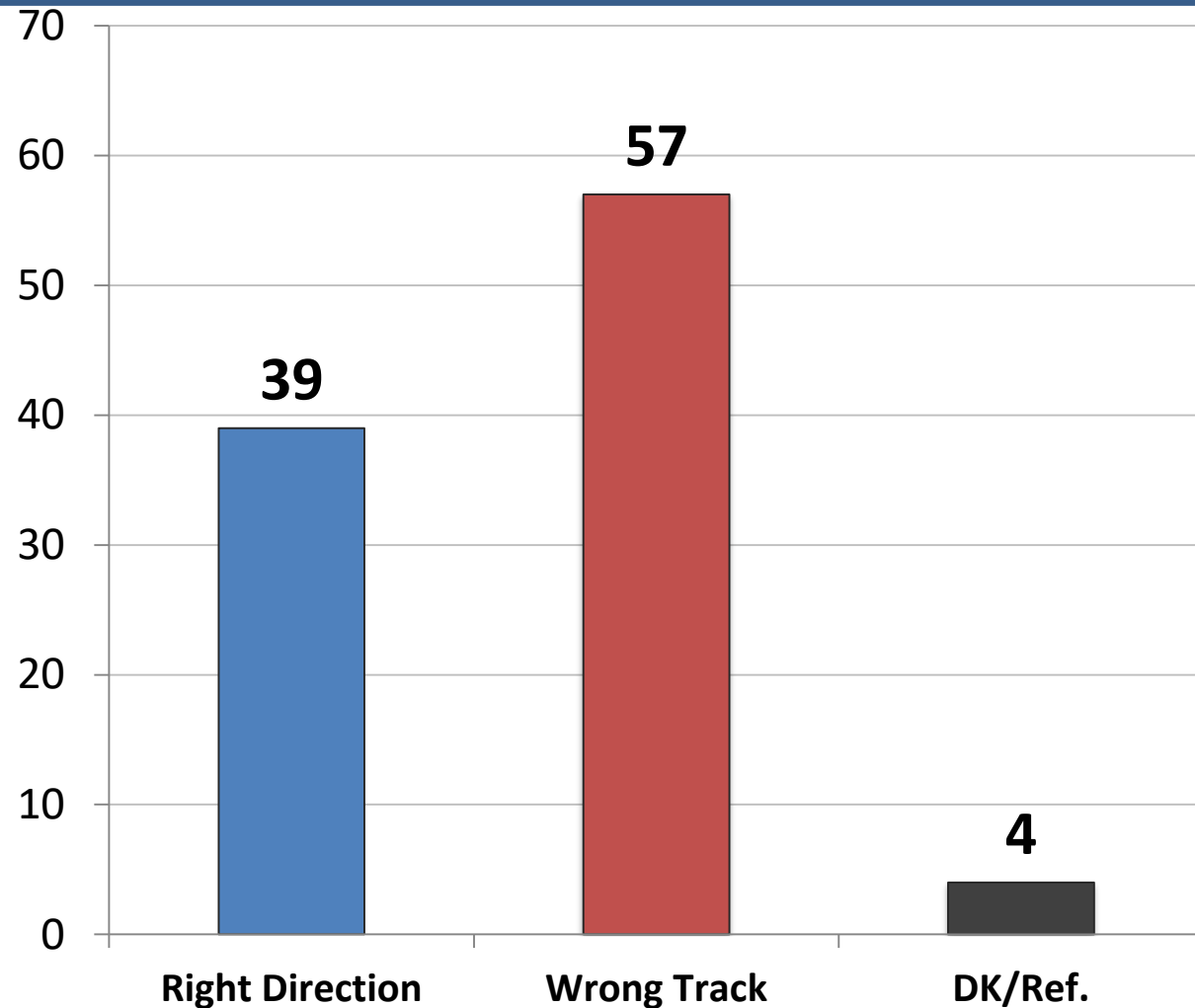
www.mclaughlinonline.com

Direction: United States

Time Series



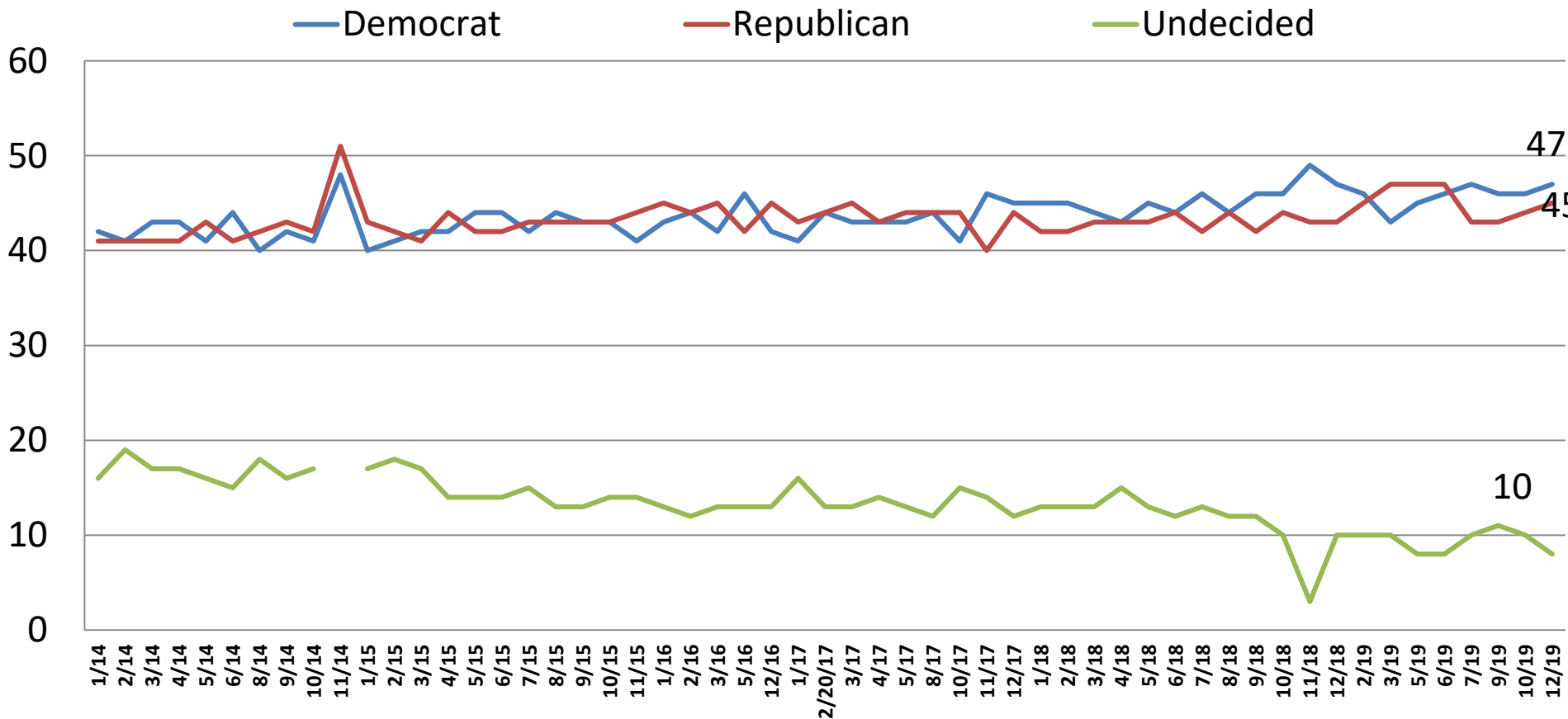
Direction: *United States*



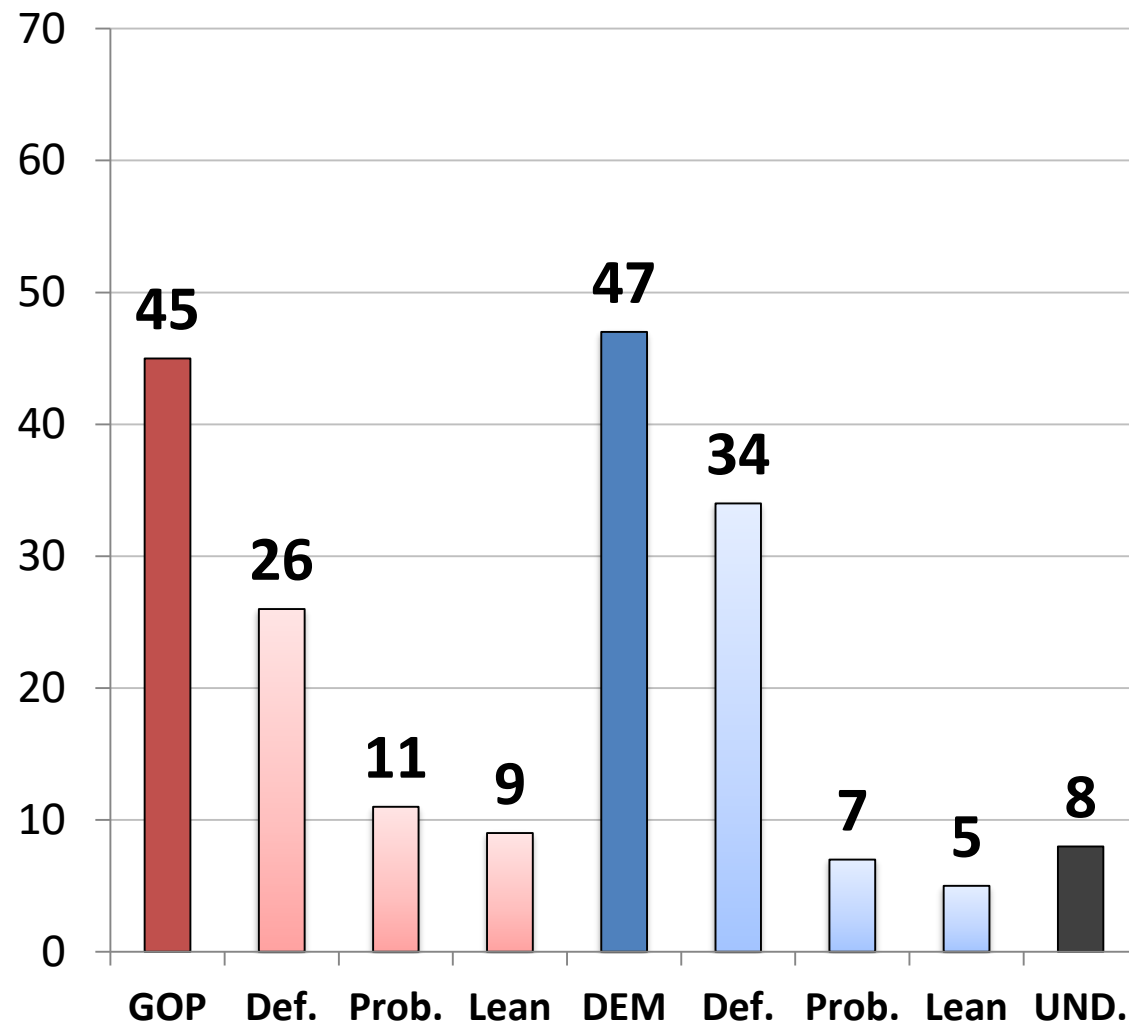
	<u>R</u>	<u>W</u>
East	45	50
Midwest	36	62
South	41	55
West	35	63
Approve – Trump	75	22
Disapprove – Trump	8	88
Vote Cong. 2020 – GOP	68	30
Vote Cong. 2020 – DEM	15	82
Vote Cong. 2020 – UND	22	63
Republican	72	27
Democrat	21	75
Independent	27	68
Liberal	26	72
Moderate	31	65
Conservative	59	37
No College Degree	40	56
College Graduate	39	58
White	43	54
African- American	23	70
Hispanic	40	57
Under 55	42	53
Over 55	35	63
Married	47	52
Single	34	61
Men	44	54
Women	35	60

Generic Ballot: U.S. Congress

Time Series



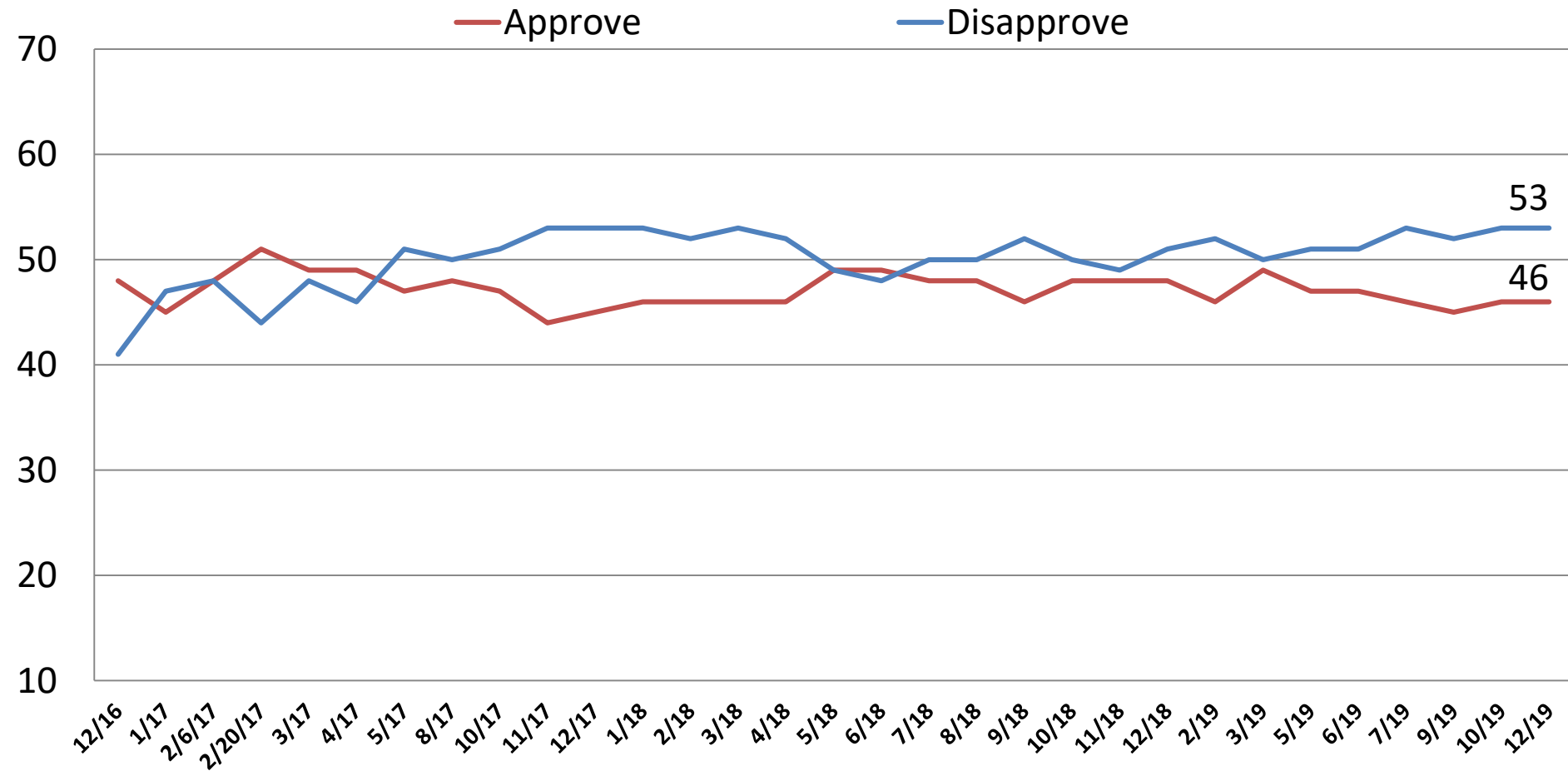
Generic Ballot: *U.S. Congress*



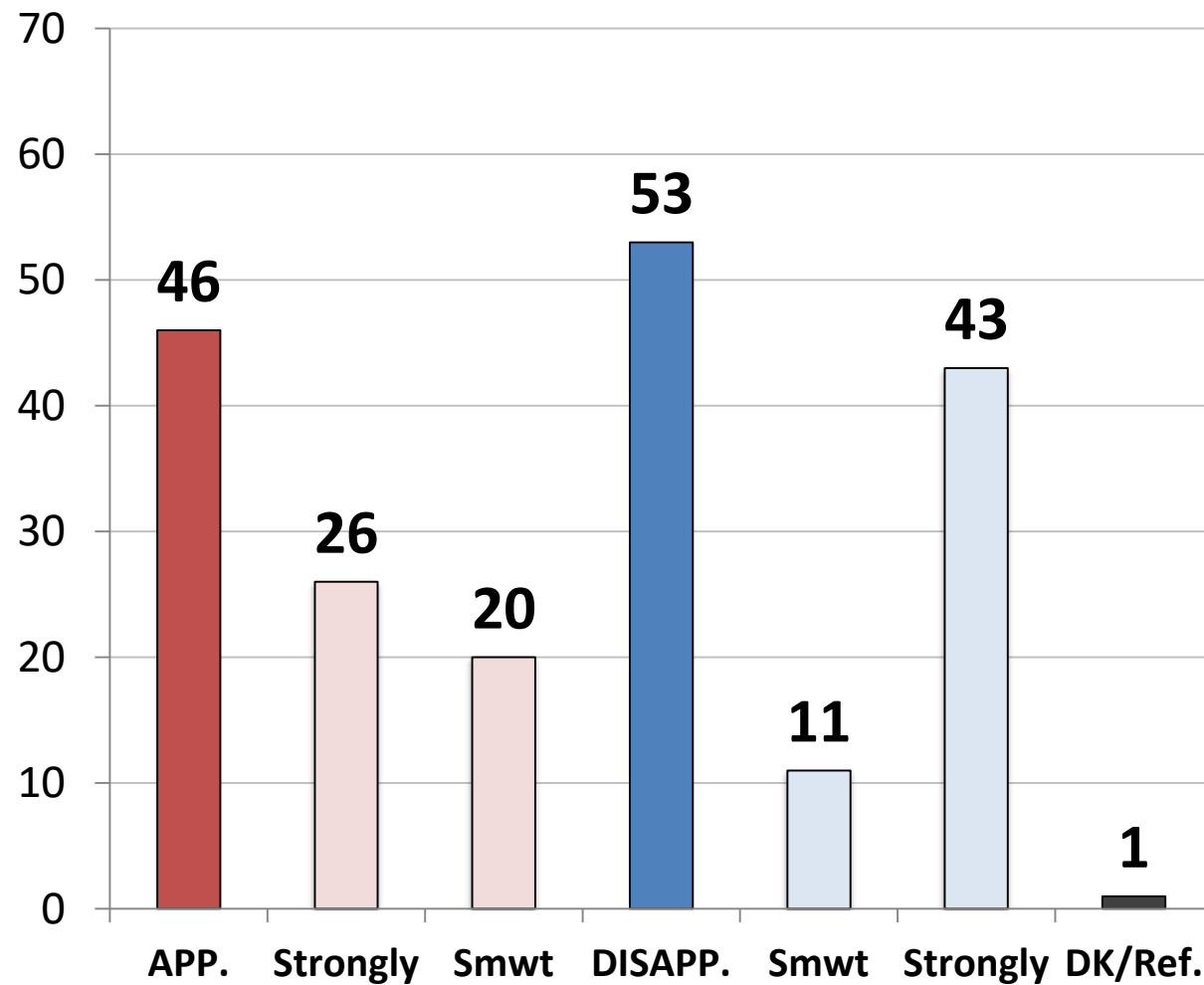
	<u>GOP</u>	<u>DEM.</u>	<u>UND.</u>
East	46	44	10
Midwest	46	43	11
South	46	48	6
West	42	51	7
Approve – Trump	85	11	4
Disapprove – Trump	12	78	11
Vote Cong. 2020 – GOP	100	0	0
Vote Cong. 2020 – DEM	0	100	0
Vote Cong. 2020 – UND	0	0	100
Republican	97	1	2
Democrat	4	93	2
Independent	38	41	21
Liberal	22	76	2
Moderate	32	53	14
Conservative	77	16	7
No College Degree	46	45	9
College Graduate	45	49	7
White	53	40	7
African- American	14	74	12
Hispanic	41	52	7
Under 55	45	47	8
Over 55	46	46	8
Married	54	40	7
Single	37	54	10
Men	46	45	9
Women	45	48	8

Job Rating: Donald Trump

Time Series



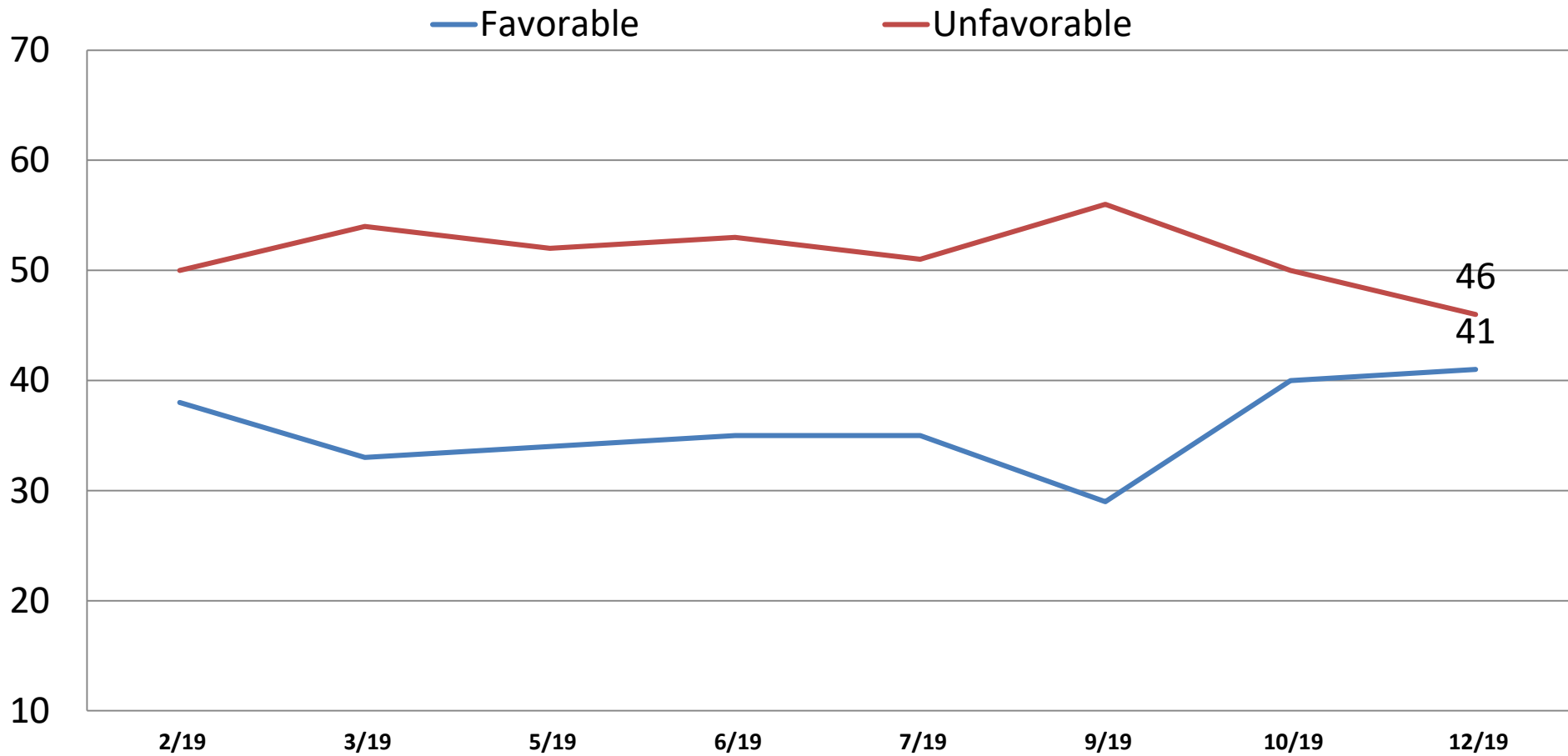
Job Rating: *Donald Trump*



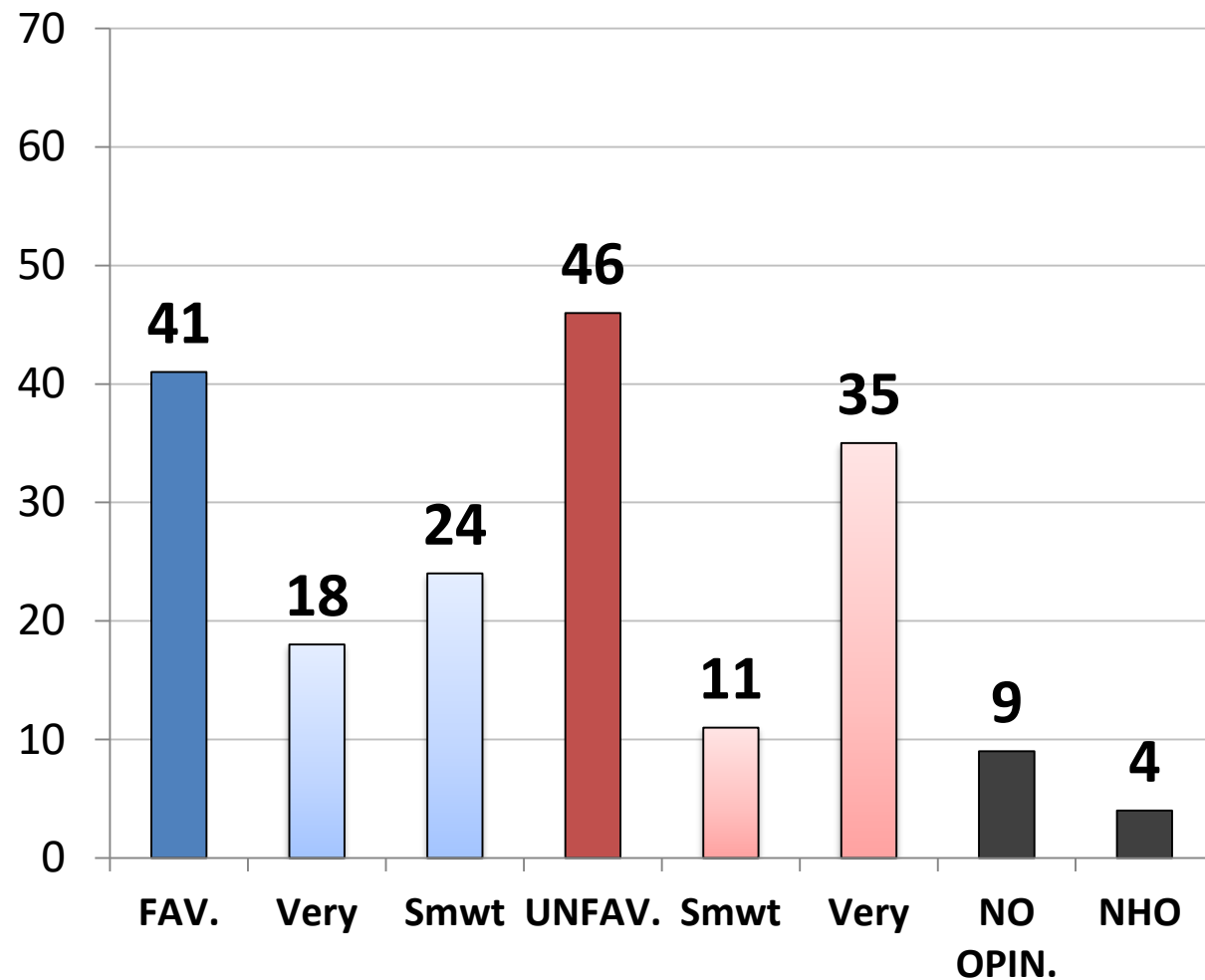
	<u>App.</u>	<u>Disapp.</u>
East	49	50
Midwest	45	54
South	48	51
West	41	58
Approve – Trump	100	0
Disapprove – Trump	0	100
Vote Cong. 2020 – GOP	86	14
Vote Cong. 2020 – DEM	11	88
Vote Cong. 2020 – UND	24	69
Republican	86	14
Democrat	16	82
Independent	38	61
Liberal	28	72
Moderate	35	63
Conservative	72	27
No College Degree	46	52
College Graduate	46	54
White	52	48
African- American	21	78
Hispanic	47	53
Under 55	49	50
Over 55	42	57
Married	54	45
Single	39	60
Men	49	50
Women	43	56

Opinion: Nancy Pelosi

Time Series



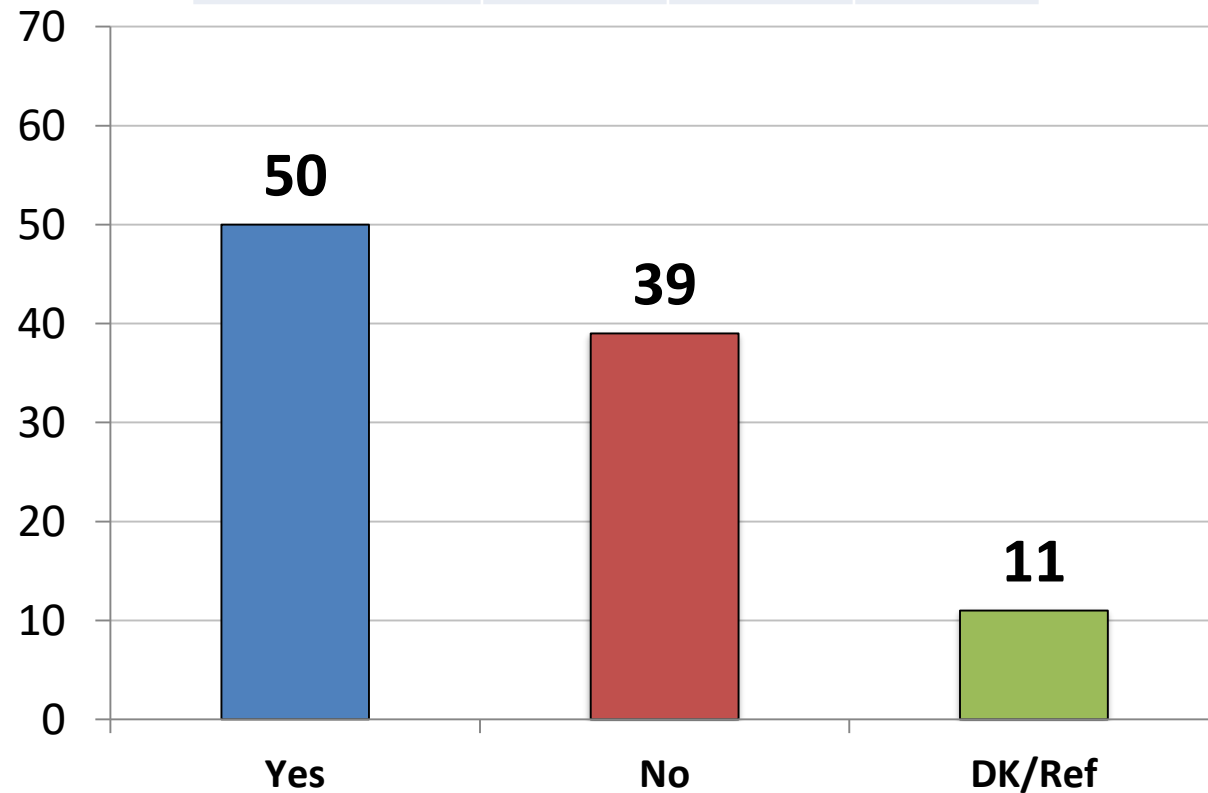
Opinion: *Nancy Pelosi*



	<u>Fav.</u>	<u>Unfav.</u>
East	44	44
Midwest	39	49
South	43	46
West	38	45
Approve – Trump	25	68
Disapprove – Trump	56	28
Vote Cong. 2020 – GOP	21	72
Vote Cong. 2020 – DEM	66	20
Vote Cong. 2020 – UND	11	48
Republican	24	70
Democrat	66	18
Independent	31	53
Liberal	69	21
Moderate	43	37
Conservative	17	76
No College Degree	35	48
College Graduate	49	44
White	37	54
African- American	54	24
Hispanic	49	31
Under 55	42	41
Over 55	40	55
Married	43	50
Single	40	41
Men	46	45
Women	37	47

Should President Trump continue to fight to change Washington?

	7/19	10/19	12/19
Yes	51	49	50
No	38	38	39



	Yes	No
East	47	42
Midwest	53	33
South	52	39
West	45	42
Approve – Trump	88	8
Disapprove – Trump	17	67
Vote Cong. 2020 – GOP	84	11
Vote Cong. 2020 – DEM	18	69
Vote Cong. 2020 – UND	41	25
Republican	85	9
Democrat	20	67
Independent	47	38
Liberal	32	58
Moderate	37	46
Conservative	77	16
No College Degree	51	36
College Graduate	48	43
White	56	33
African- American	28	58
Hispanic	41	50
Under 55	49	39
Over 55	50	39
Married	59	33
Single	42	45
Men	54	36
Women	46	42

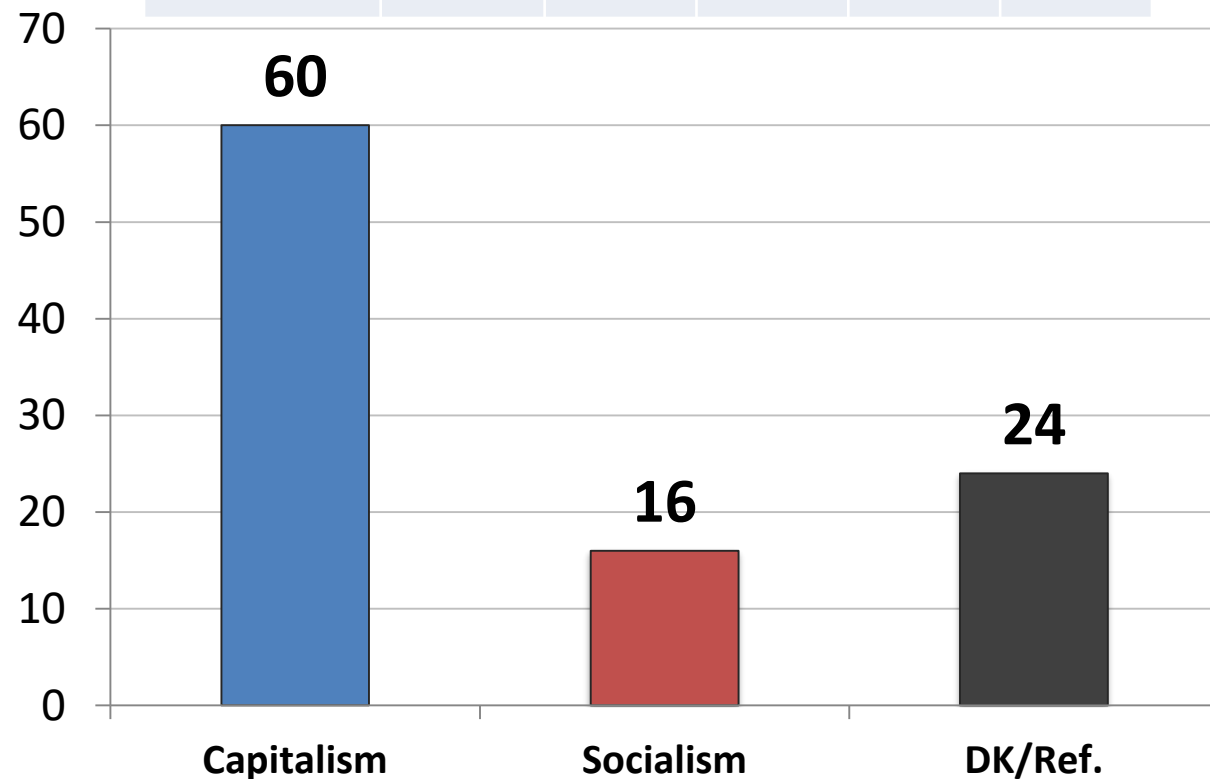
All things being equal, do you prefer:

1. *Free Market Capitalism*

or.

2. *Big Government Socialism*

	6/19	7/19	9/19	10/19	12/19
Capitalism	63	60	61	63	60
Socialism	14	14	15	14	16



	<u>C</u>	<u>S</u>
East	59	20
Midwest	62	17
South	60	14
West	58	16
Approve – Trump	73	13
Disapprove – Trump	49	19
Vote Cong. 2020 – GOP	77	10
Vote Cong. 2020 – DEM	47	23
Vote Cong. 2020 – UND	45	10
Republican	75	10
Democrat	46	23
Independent	60	14
Liberal	47	31
Moderate	56	13
Conservative	75	6
No College Degree	54	15
College Graduate	67	17
White	63	14
African- American	56	16
Hispanic	53	25
Under 55	57	20
Over 55	65	10
Married	65	15
Single	54	19
Men	67	19
Women	54	13

Now, from the following list, which issue is personally most important to you?

	12/18	2/19	3/19	5/19	6/19	7/19	9/19	10/19	12/19	Rep	Dem	Ind	Lib	Mod	Cons	App. DJT	Disapp DJT	Men	Wo-Men
ECONOMIC	33	36	31	32	33	31	34	33	33	34	30	36	30	32	37	35	35	38	29
Improving the Economy	12	11	10	12	12	12	13	13	12	14	11	12	12	12	13	13	13	15	10
Jobs/Unemployment	7	8	7	7	8	6	7	7	8	6	10	8	8	10	7	8	8	10	7
Reduce Budget/Deficit	4	6	5	5	5	6	5	6	5	6	3	6	4	5	6	7	7	7	3
Wasteful Gov't Spending	8	8	6	6	5	5	5	4	5	5	4	6	5	4	5	5	5	4	5
Hold Line/Taxes	2	3	3	1	3	2	2	2	3	2	3	4	2	2	5	3	3	3	4
SOCIAL	28	27	30	28	28	29	27	31	33	27	43	28	42	36	24	24	42	30	36
Reform Healthcare	9	10	12	10	12	14	14	15	14	12	16	15	19	15	10	11	17	15	14
Protect Medicare	13	12	12	11	10	10	7	11	11	9	17	7	13	12	8	7	15	8	14
Improving Education	7	5	6	7	6	6	5	5	8	6	10	6	10	8	6	7	9	6	9
SECURITY	19	20	20	22	22	22	24	20	18	30	10	16	11	13	29	28	10	20	17
Fix Immigration	10	9	9	11	9	13	11	9	7	12	3	7	4	4	14	13	3	9	6
Nat'l Sec./Terror	6	8	9	9	10	7	11	8	9	15	5	6	6	6	14	13	5	7	10
Defeat/Destroy ISIS	3	2	2	3	3	2	2	3	2	2	2	3	2	3	2	3	2	3	2
HONESTY/ INTEGRITY/D.C.	16	15	17	15	15	15	13	14	12	8	13	16	15	14	8	9	14	10	14
D.K./REFUSED	4	3	2	2	2	3	3	3	4	2	4	4	3	5	3	3	3	3	4

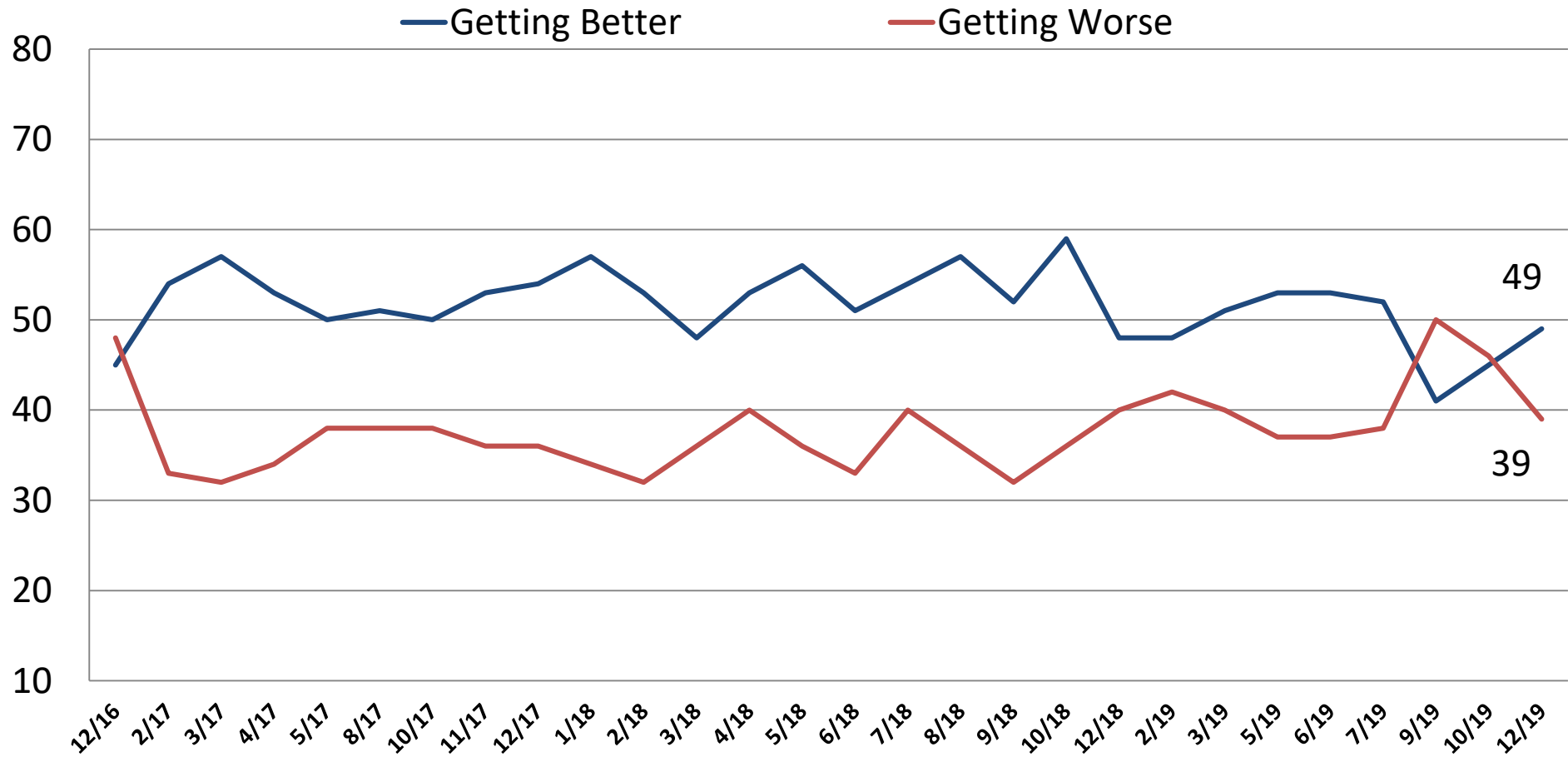
Current Opinion of the U.S. Economy

Time Series



Current Opinion of the U.S. Economy

Time Series



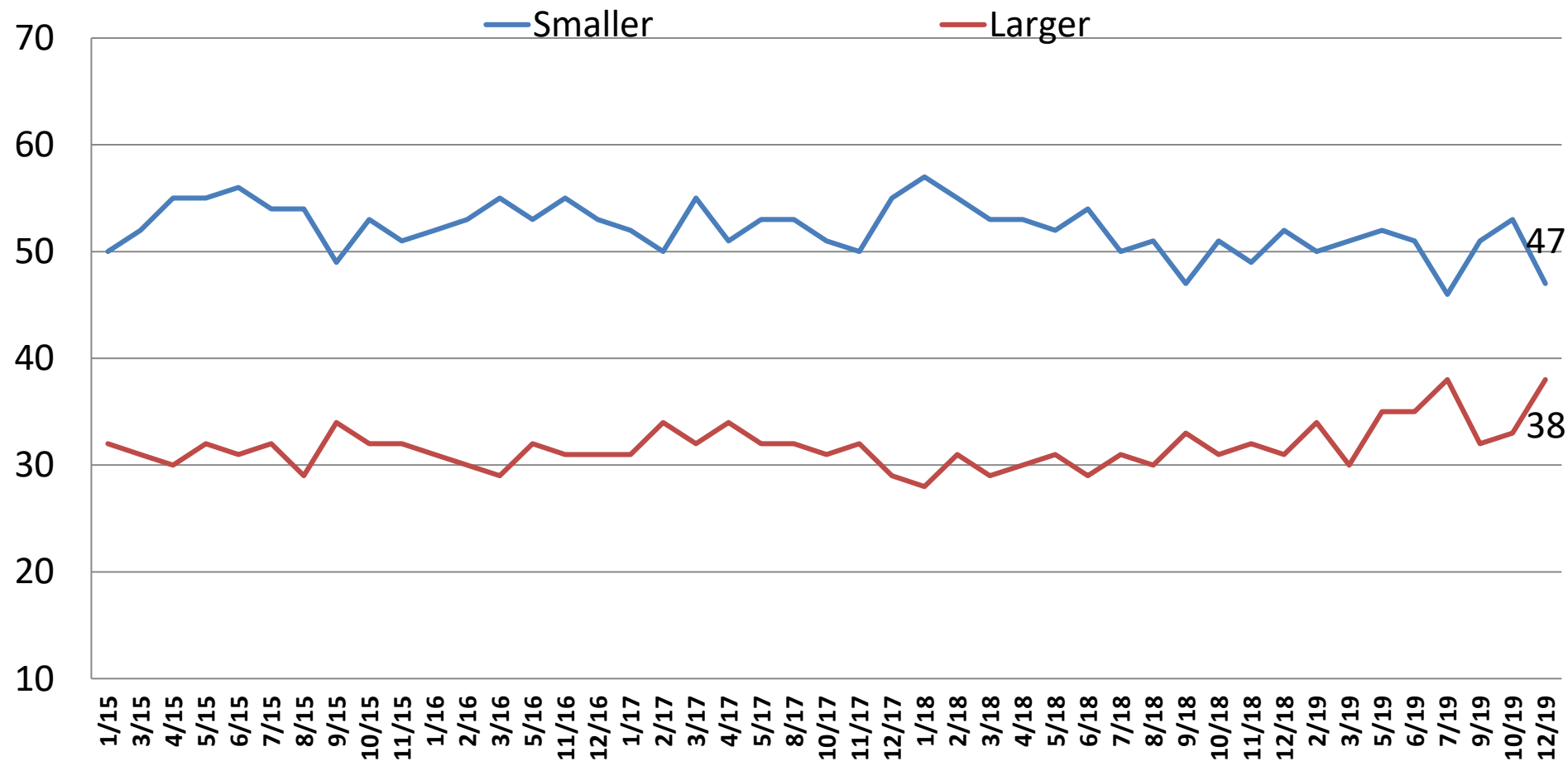
Current Opinion of the U.S. Economy

Time Series

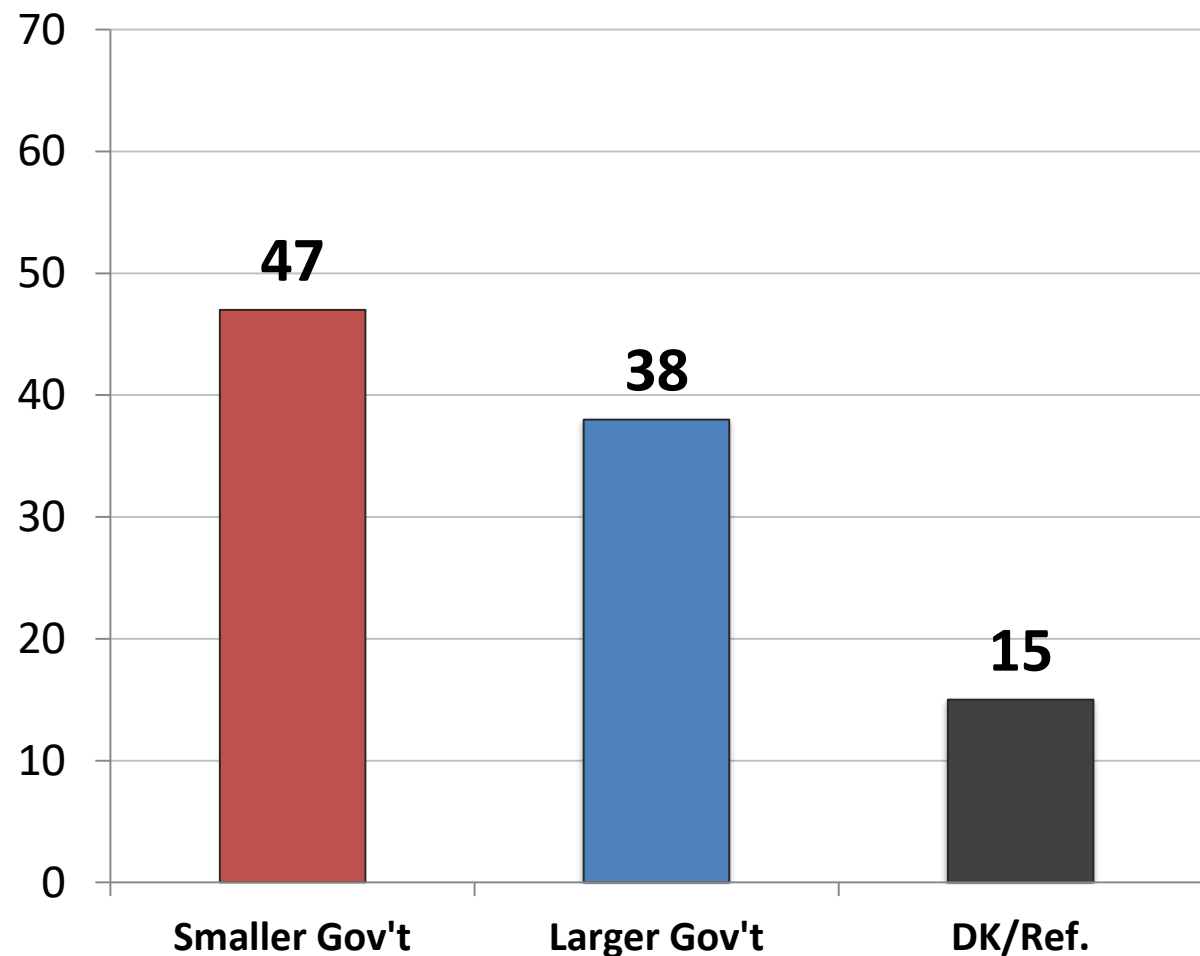
	<u>6/19</u>	<u>7/19</u>	<u>9/19</u>	<u>10/19</u>	<u>12/19</u>	<u>Rep</u>	<u>Dem</u>	<u>Ind</u>	<u>Lib</u>	<u>Mod</u>	<u>Con</u>	<u>App. DJT</u>	<u>Disapp. DJT</u>	<u>Men</u>	<u>Women</u>
NOT RECESSION	66	69	70	71	66	77	57	64	63	60	75	77	57	68	64
Getting Better	40	42	33	36	38	63	18	33	22	27	61	67	13	40	35
Getting Worse	25	28	37	35	28	14	39	31	41	33	14	11	44	28	29
RECESSION	25	21	21	21	23	14	29	24	26	27	15	14	30	24	21
Getting Better	13	10	8	9	12	11	13	12	13	14	9	12	12	15	9
Getting Worse	12	11	14	11	11	3	17	12	13	13	7	2	19	9	13
D.K./REFUSED	10	10	9	9	12	9	13	12	11	14	10	9	13	8	15
GETTING BETTER	53	52	41	45	49	74	31	45	35	40	70	78	24	56	44
GETTING WORSE	37	38	50	46	39	17	56	43	54	46	20	13	63	36	42
D.K./REFUSED	10	10	9	9	12	9	13	12	11	14	10	9	13	8	15
<i>Net Diff.</i>	<i>15.3</i>	<i>13.8</i>	<i>-9.5</i>	<i>-.06</i>	<i>9.8</i>	<i>56.3</i>	<i>-25.4</i>	<i>1.2</i>	<i>-19.3</i>	<i>-5.8</i>	<i>49.5</i>	<i>65.6</i>	<i>-38.5</i>	<i>19.0</i>	<i>1.6</i>

Would you say you most favor a smaller government with fewer services or a larger government with many services?

Time Series

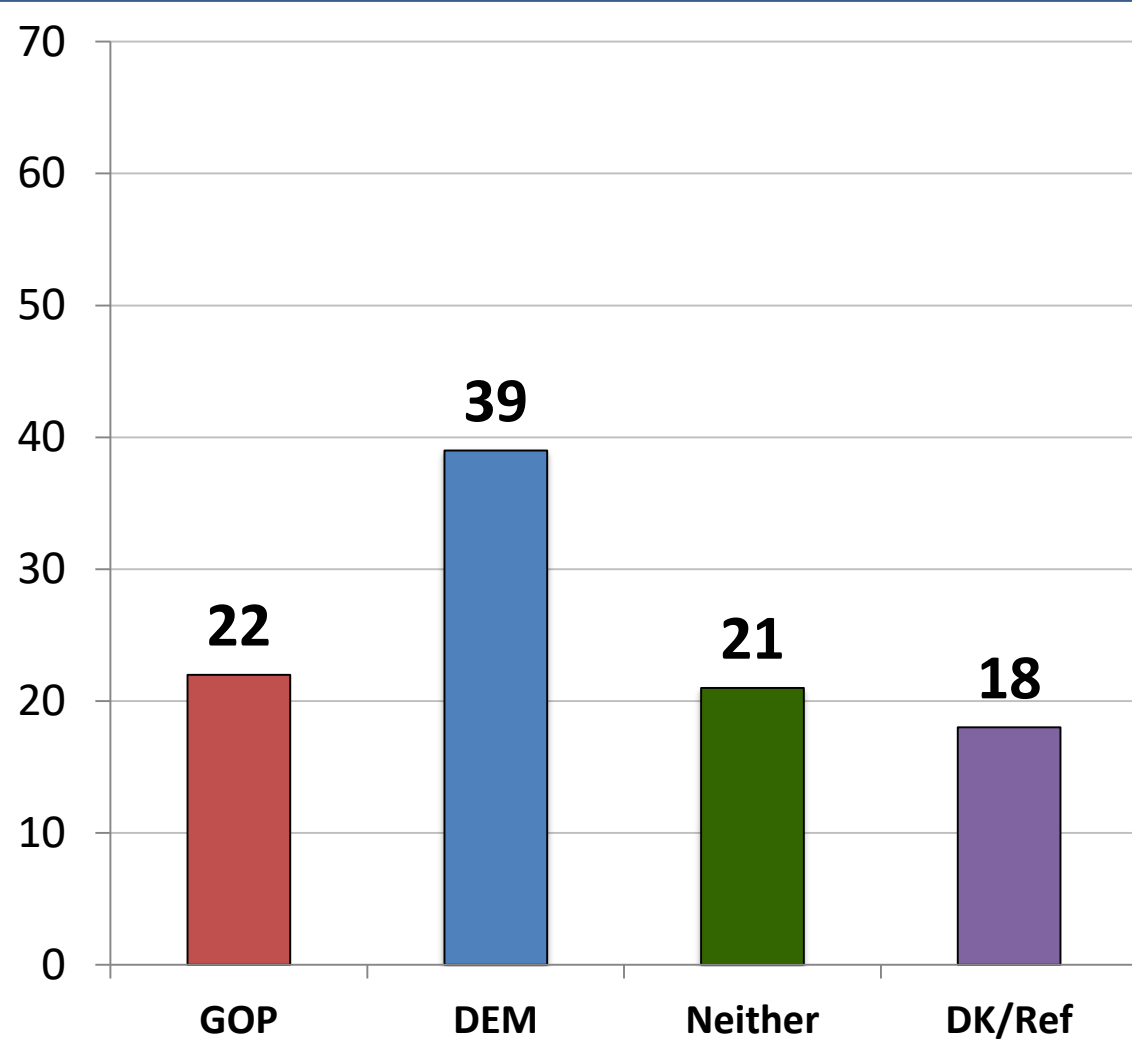


Would you say you most favor a smaller government with fewer services or a larger government with many services?



	<u>Smaller</u>	<u>Larger</u>
East	49	39
Midwest	49	36
South	43	41
West	51	34
Approve – Trump	58	32
Disapprove – Trump	38	44
Vote Cong. 2020 – GOP	64	28
Vote Cong. 2020 – DEM	32	51
Vote Cong. 2020 – UND	38	22
Republican	62	28
Democrat	29	56
Independent	53	28
Liberal	26	60
Moderate	45	35
Conservative	67	24
No College Degree	47	36
College Graduate	48	40
White	50	35
African- American	39	47
Hispanic	42	44
Under 55	44	41
Over 55	52	33
Married	49	38
Single	45	38
Men	51	40
Women	44	36

Independents – Which party's primary are you more likely to vote?



	<u>GOP</u>	<u>DEM</u>	<u>NTR</u>
East	22	29	35
Midwest	24	53	13
South	22	43	20
West	20	48	17
Approve – Trump	51	11	26
Disapprove – Trump	5	57	17
Vote Cong. 2020 – GOP	55	14	26
Vote Cong. 2020 – DEM	2	77	13
Vote Cong. 2020 – UND	4	10	26
Republican	0	0	0
Democrat	0	0	0
Independent	22	39	21
Liberal	8	68	19
Moderate	13	40	22
Conservative	47	18	20
No College Degree	28	32	19
College Graduate	16	47	23
White	26	37	21
African- American	19	38	17
Hispanic	5	36	29
Under 55	22	39	21
Over 55	23	39	21
Married	19	41	26
Single	25	32	17
Men	26	35	23
Women	19	43	19

2020 Republican Primary for President

	<u>3/19</u>	<u>5/19</u>	<u>6/19</u>	<u>7/19</u>	<u>9/19</u>	<u>10/19</u>	<u>12/19</u>	<u>E</u>	<u>MW</u>	<u>S</u>	<u>W</u>	<u>Rep</u>	<u>Dem</u>	<u>Ind</u>	<u>Lib</u>	<u>Mod</u>	<u>Cons</u>	<u>App. DJT</u>	<u>Disapp DJT</u>	<u>Men</u>	<u>Wo- men</u>	<u>White</u>	<u>AA</u>	<u>HISP</u>
Donald Trump	80	77	79	81	76	76	83	82	80	90	74	83	0	85	88	72	86	93	20	88	80	85	89	80
Bill Weld	1	3	7	2	3	2	3	5	4	1	4	4	0	0	4	10	0	3	3	2	4	2	0	11
Joe Walsh	-	-	-	-	1	1	2	3	4	0	4	2	0	4	3	4	2	1	11	1	4	2	0	3
Mitt Romney	-	-	-	-	-	9	-	-	-	-	-	-	-	-	-	-	-	-	-	-	-	-	-	-
Mark Sanford	-	-	-	4	3	1	-	-	-	-	-	-	-	-	-	-	-	-	-	-	-	-	-	-
Undecided	14	14	13	14	17	12	11	9	12	8	19	11	0	12	4	14	12	3	66	9	13	11	11	6

2020 Democratic Primary for President

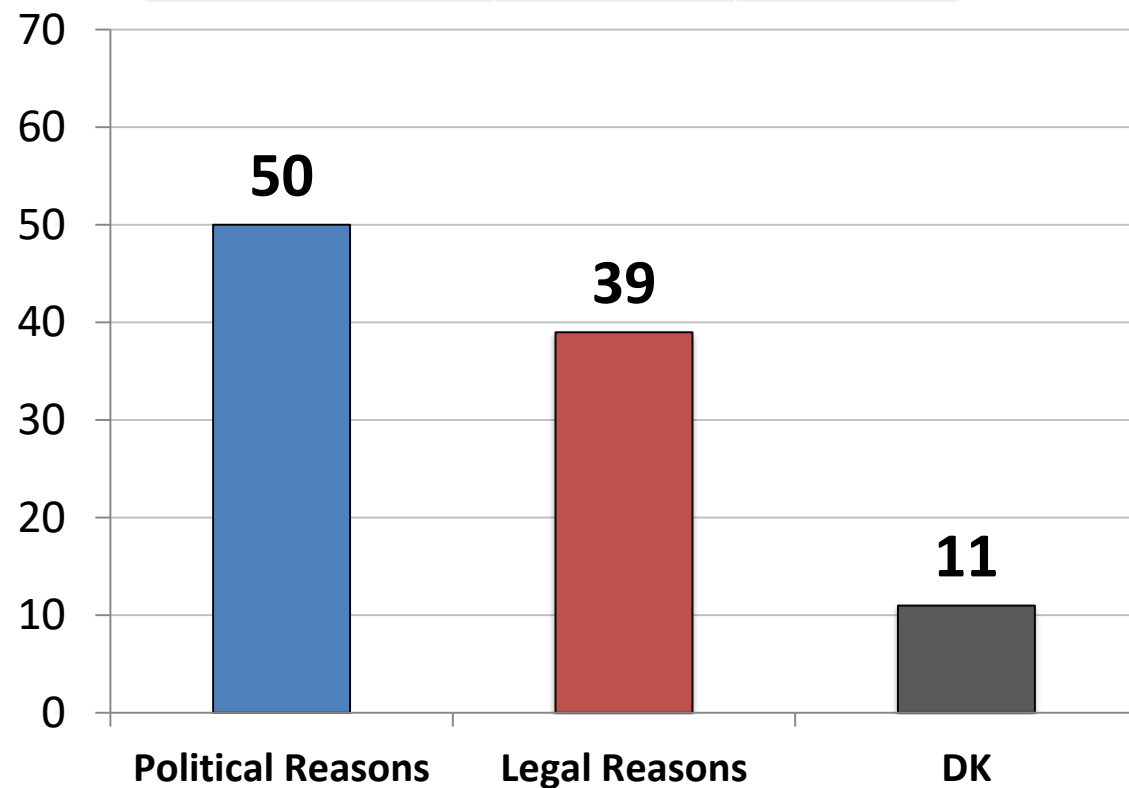
	<u>12/18</u>	<u>2/19</u>	<u>3/19</u>	<u>5/19</u>	<u>6/19</u>	<u>7/19</u>	<u>9/19</u>	<u>10/19</u>	<u>12/19</u>	<u>E</u>	<u>MW</u>	<u>S</u>	<u>W</u>	<u>Dem</u>	<u>Ind</u>	<u>Lib</u>	<u>Mod</u>	<u>Cons</u>	<u>Men</u>	<u>Wo- men</u>	<u>White</u>	<u>AA</u>	<u>HIS</u>
Joe Biden	17	25	28	30	34	28	28	28	27	34	29	26	23	30	19	21	35	24	24	30	24	39	26
Bernie Sanders	18	16	17	19	17	15	21	18	17	12	23	15	19	17	17	22	13	14	18	16	18	7	24
Elizabeth Warren	4	5	5	7	11	9	12	16	15	12	14	16	16	15	16	19	13	7	14	16	15	12	18
Mike Bloomberg	-	-	-	-	-	-	-	-	5	7	2	7	3	4	9	4	7	6	6	4	7	2	3
Pete Buttigieg	-	.1	3	4	6	3	6	3	5	3	6	6	3	5	4	9	1	0	5	4	6	2	3
Andrew Yang	-	.1	0	2	1	2	2	6	5	3	4	4	7	4	8	6	4	1	7	3	6	2	4
Tom Steyer	-	-	-	-	1	1	.2	.2	4	4	4	4	3	4	3	2	4	8	5	3	5	2	5
Cory Booker	2	3	3	5	2	3	4	3	3	6	3	2	3	3	4	3	4	3	5	3	4	6	0
Tulsi Gabbard	-	.4	-	.4	1	1	2	2	2	2	1	1	4	2	3	1	2	4	3	1	1	2	2
Amy Klobuchar	1	1	2	1	.4	1	2	2	2	1	3	2	0	1	4	3	1	0	1	3	3	0	0
Julian Castro	-	1	0	1	.4	1	2	1	2	3	0	1	2	2	1	2	1	2	1	2	2	2	2
John Delaney	.2	1	.4	.3	1	0	1	1	1	0	3	2	0	1	2	1	0	8	2	1	1	2	1
Michael Bennet	-	-	1	.2	.4	1	2	.3	1	3	0	1	1	1	1	1	1	3	2	.4	1	0	1
Ma. Williamson	-	-	-	-	.3	1	2	1	1	1	0	1	1	1	0	1	1	2	1	1	.1	2	2
Deval Patrick	-	-	-	-	-	-	-	-	.3	0	0	1	1	.4	0	.4	.3	0	1	0	.2	1	0
Undecided	15	16	13	12	14	9	10	15	11	7	8	13	15	11	11	8	13	19	7	15	9	20	9

2020 Democratic Primary for President *With Clinton/Bloomberg*

	<u>10/19</u>	<u>12/19</u>	<u>E</u>	<u>MW</u>	<u>S</u>	<u>W</u>	<u>Dem</u>	<u>Ind</u>	<u>Lib</u>	<u>Mod</u>	<u>Cons</u>	<u>App. DJT</u>	<u>Disap DJT</u>	<u>Men</u>	<u>Wo- men</u>	<u>White</u>	<u>AA</u>	<u>HIS</u>
Joe Biden	*	23	27	32	22	12	24	17	17	29	20	13	24	22	23	22	31	16
Bernie Sanders	23	17	14	19	14	21	15	20	21	13	15	8	18	18	16	18	9	22
Elizabeth Warren	20	15	12	16	16	15	16	12	20	11	9	11	16	14	16	16	11	17
Hillary Clinton	10	6	10	2	4	10	7	4	5	7	8	18	4	7	5	5	8	7
Mike Bloomberg	1	5	8	4	6	3	4	7	4	6	6	2	6	6	5	6	2	5
Pete Buttigieg	5	5	2	6	7	3	5	5	7	3	3	.2	6	5	5	7	2	2
Andrew Yang	6	4	4	2	3	5	3	5	4	4	0	3	4	5	2	4	2	3
Cory Booker	4	4	7	4	3	3	5	1	4	4	4	.4	4	3	4	2	8	5
Michael Bennet	2	3	2	1	5	3	2	7	2	4	6	7	2	5	2	2	7	4
Tom Steyer	2	3	2	1	4	3	4	1	2	3	4	7	2	2	3	3	1	3
Julian Castro	0	2	2	2	2	4	2	2	3	2	2	5	2	2	3	2	0	6
Amy Klobuchar	2	2	1	3	2	1	1	4	2	2	2	2	2	2	2	3	1	0
Tulsi Gabbard	2	1	2	1	.3	4	1	3	1	1	4	1	1	2	1	1	0	2
John Delaney	1	1	0	2	1	1	1	2	0	1	3	4	.3	1	1	1	1	0
Mar. Williamson	-	.4	0	.4	1	1	1	0	1	0	2	2	.2	.4	.4	1	0	0
Deval Patrick	-	.2	1	0	.2	.2	.3	0	.3	.3	0	2	0	.3	.2	.4	0	0
Undecided	10	10	8	5	10	14	10	10	7	11	14	15	8	6	13	8	16	7

Do you think that Nancy Pelosi and the House Democrats are moving forward with their impeachment inquiry against President Trump mainly for political reasons to stop him from being re-elected or mainly for legal reasons?

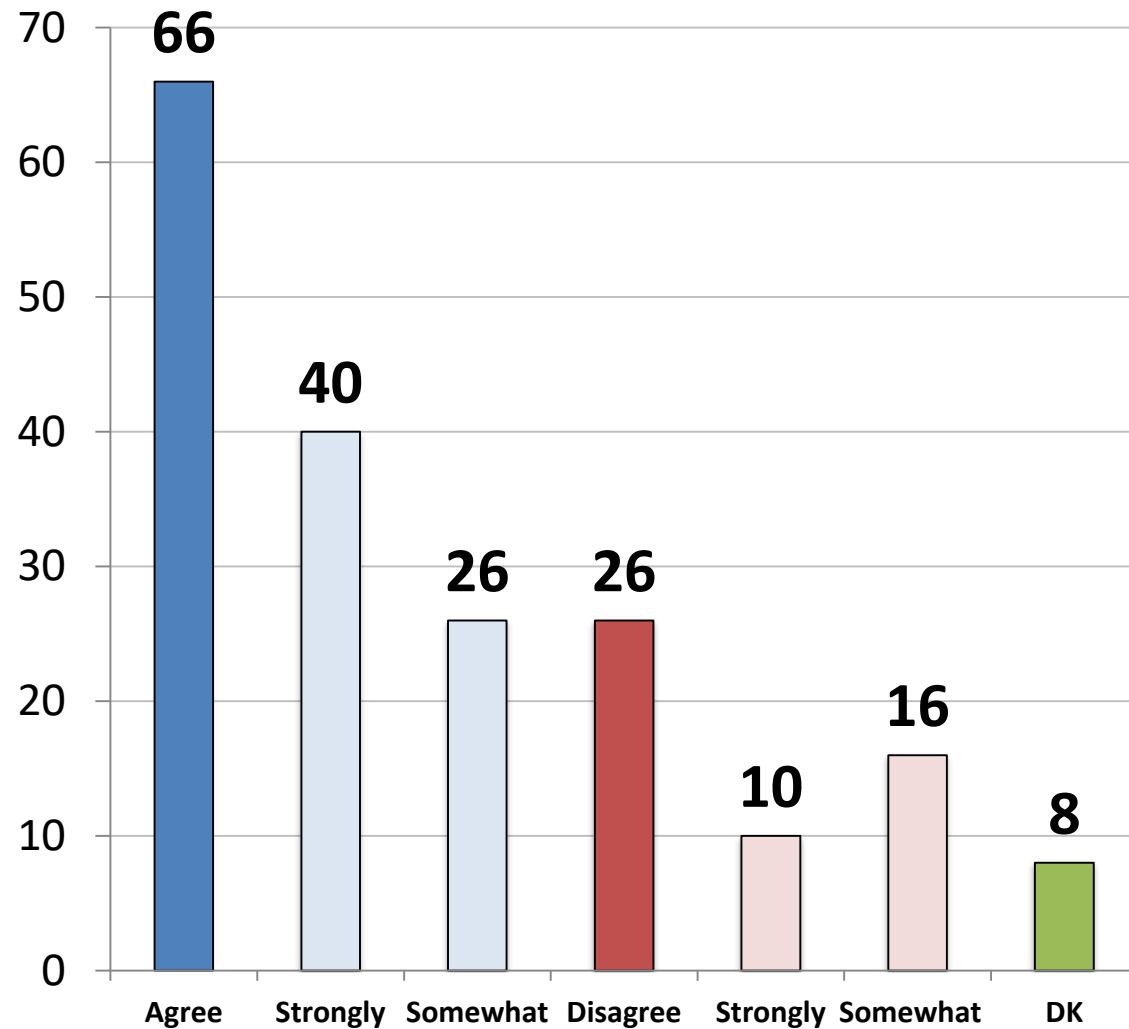
	10/19	12/19
Political Reasons	52	50
Legal Reasons	36	39



	Poli.	Legal
East	51	37
Midwest	52	38
South	49	39
West	46	44
Approve – Trump	82	10
Disapprove – Trump	22	66
Vote Cong. 2020 – GOP	81	12
Vote Cong. 2020 – DEM	22	67
Vote Cong. 2020 – UND	32	32
Republican	80	14
Democrat	24	63
Independent	47	39
Liberal	35	57
Moderate	40	43
Conservative	71	22
No College Degree	49	37
College Graduate	50	42
White	56	35
African- American	25	61
Hispanic	47	39
Under 55	50	36
Over 55	49	45
Married	57	35
Single	43	42
Men	54	39
Women	46	40

AGREE OR DISAGREE:

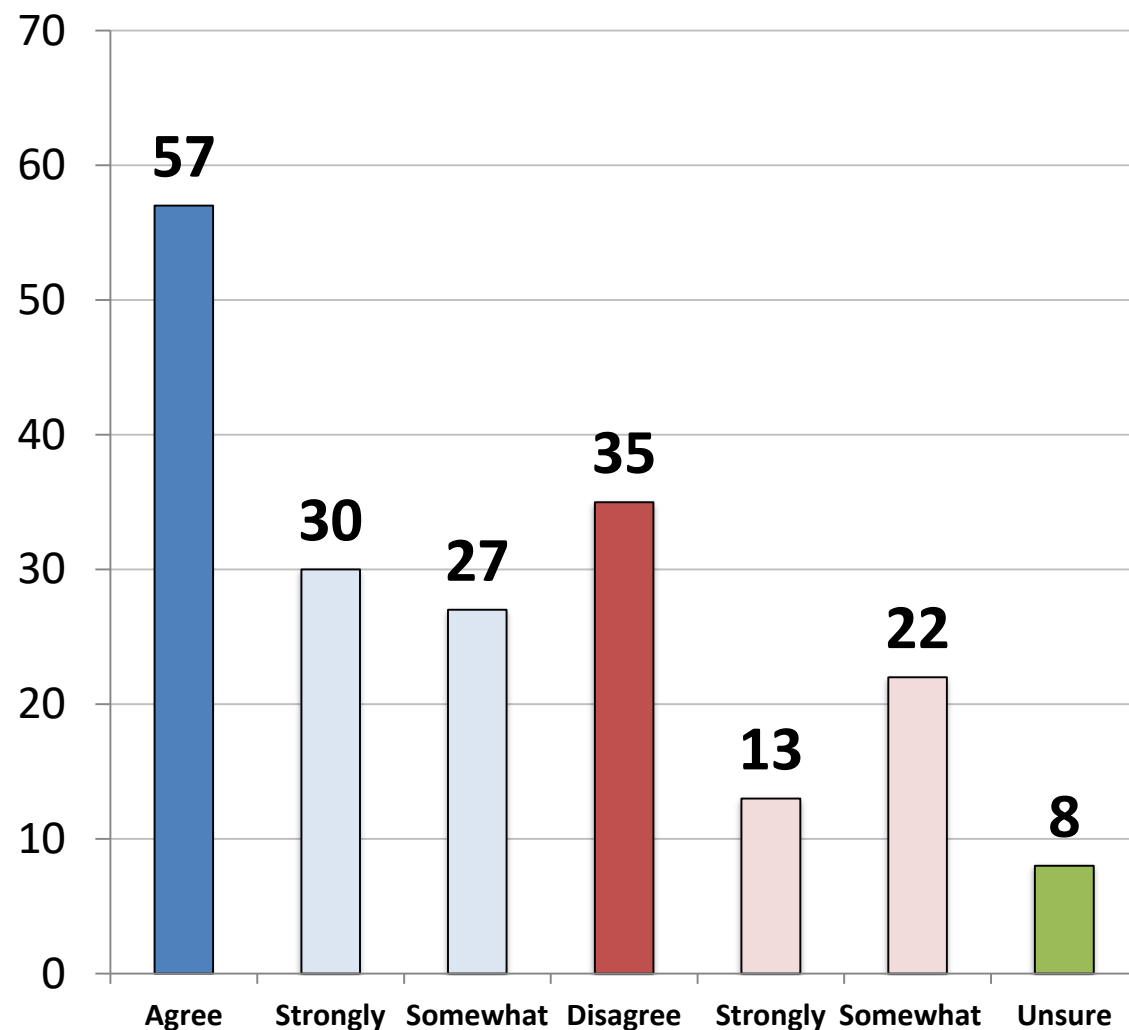
Following the impeachment hearings is a waste of time. The Democrats are going to vote to impeach no matter what and the Senate Republicans are going to vote to keep Trump in office. no matter what. Wake me when it's over.



	Agr	Dis
East	69	20
Midwest	65	27
South	65	27
West	67	28
Approve – Trump	86	9
Disapprove – Trump	50	41
Vote Cong. 2020 – GOP	87	10
Vote Cong. 2020 – DEM	50	41
Vote Cong. 2020 – UND	40	31
Republican	86	10
Democrat	49	41
Independent	64	26
Liberal	54	40
Moderate	62	26
Conservative	80	15
No College Degree	65	25
College Graduate	67	27
White	70	24
African- American	50	35
Hispanic	64	25
Under 55	65	26
Over 55	68	27
Married	74	22
Single	62	26
Men	71	25
Women	62	27

AGREE OR DISAGREE

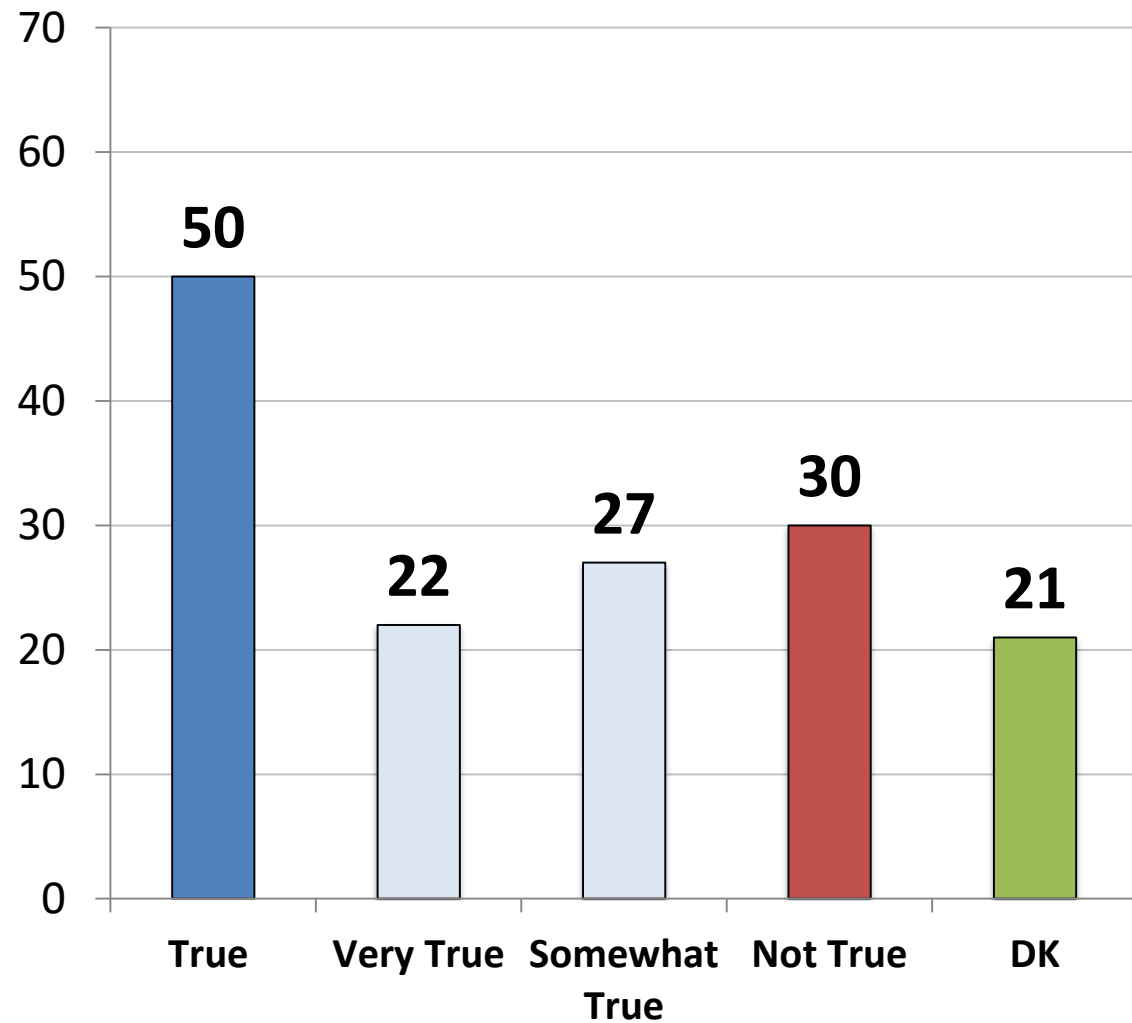
Trump is like a bull in a china shop. He breaks a lot of old ideas and doesn't care. It isn't pretty but boy is he changing Washington and shaking things up.



	Agr	Dis
East	58	34
Midwest	57	32
South	59	35
West	54	40
Approve – Trump	83	13
Disapprove – Trump	36	54
Vote Cong. 2020 – GOP	79	19
Vote Cong. 2020 – DEM	39	51
Vote Cong. 2020 – UND	42	35
Republican	78	18
Democrat	43	47
Independent	51	40
Liberal	49	43
Moderate	46	43
Conservative	75	20
No College Degree	58	35
College Graduate	56	36
White	62	31
African- American	45	45
Hispanic	49	41
Under 55	56	35
Over 55	60	35
Married	63	32
Single	52	36
Men	65	31
Women	50	39

TRUE OR UNTRUE:

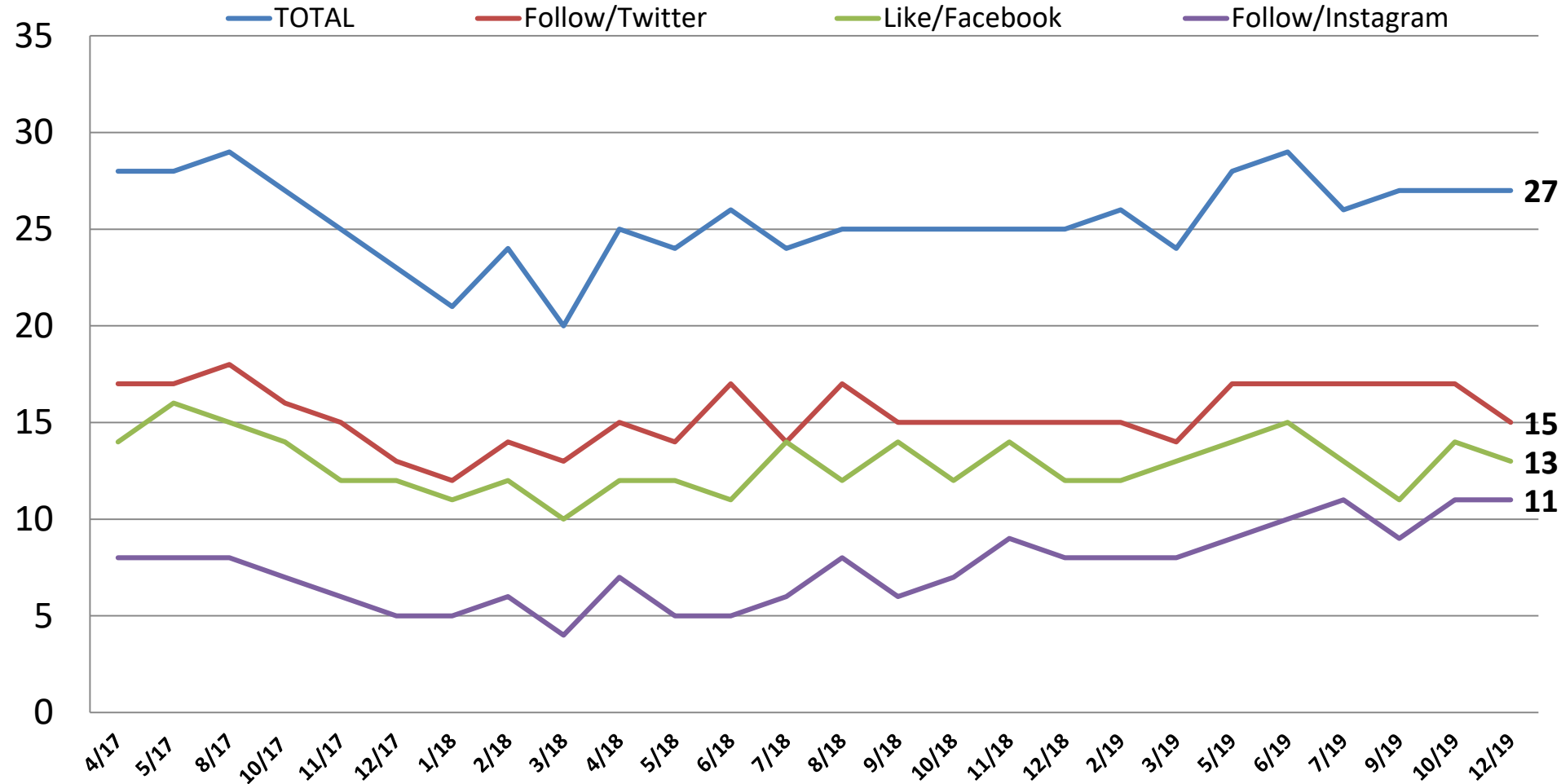
The US economy is the only strong one in the world. Its growing at 2-3 percent a year while Europe and Japan are lucky to hit 1 percent. China is in a recession. His policies have achieved great results.



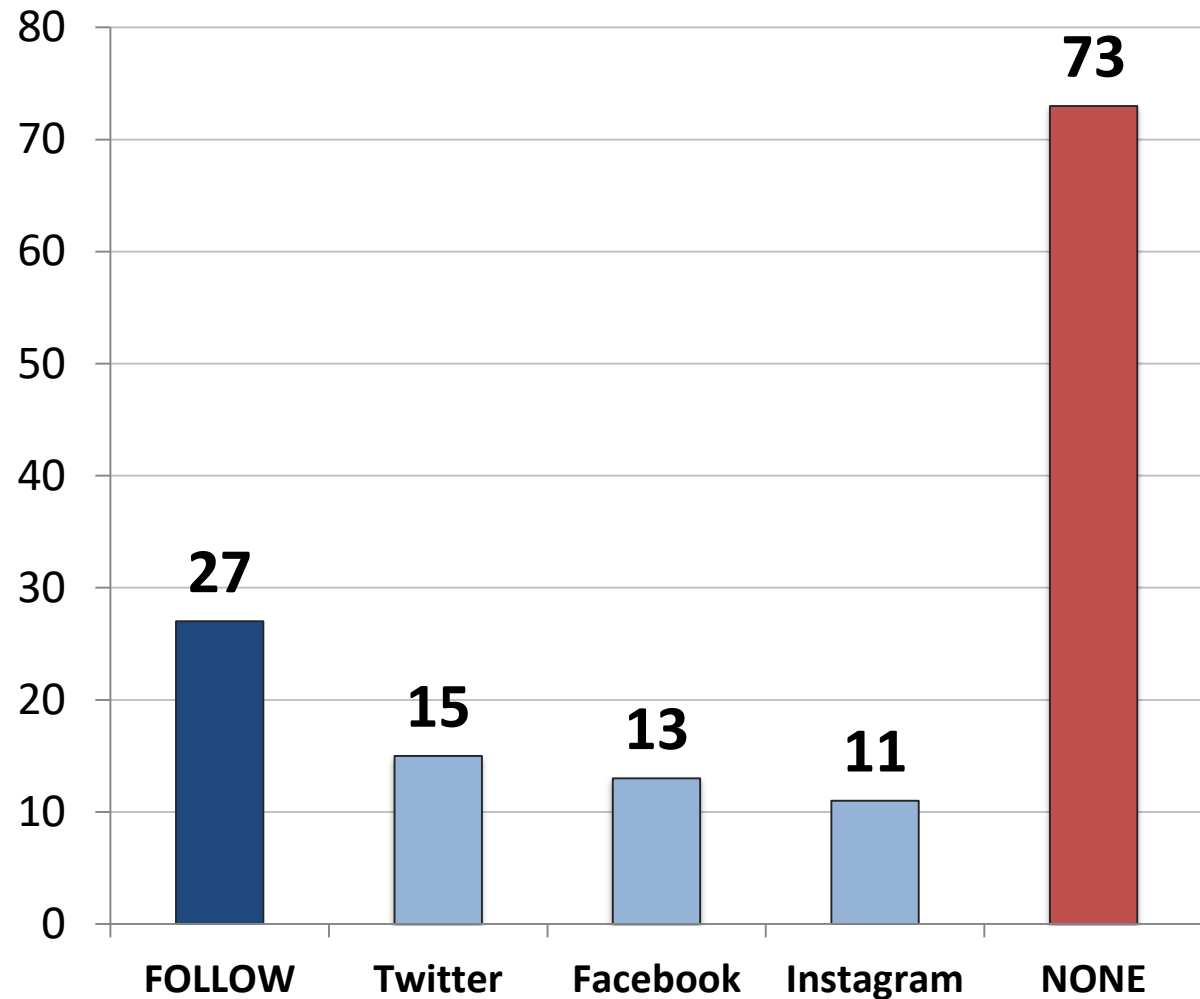
	True	Not
East	50	23
Midwest	52	33
South	49	30
West	49	31
Approve – Trump	75	9
Disapprove – Trump	28	47
Vote Cong. 2020 – GOP	73	11
Vote Cong. 2020 – DEM	29	48
Vote Cong. 2020 – UND	39	27
Republican	74	12
Democrat	33	46
Independent	43	30
Liberal	36	47
Moderate	46	30
Conservative	65	15
No College Degree	50	24
College Graduate	49	36
White	52	30
African- American	41	28
Hispanic	56	25
Under 55	51	28
Over 55	48	33
Married	54	28
Single	45	31
Men	58	28
Women	42	31

Do you follow Donald Trump on Twitter, Instagram and/or have you like his page on Facebook, meaning his posts show up on your newsfeed?

- Time Series -



Do you follow Donald Trump on Twitter, Instagram and/or have you like his page on Facebook, meaning his posts show up on your newsfeed?



	Follow	None
East	34	66
Midwest	22	78
South	28	72
West	24	76
Approve – Trump	43	57
Disapprove – Trump	12	88
Vote Cong. 2020 – GOP	40	60
Vote Cong. 2020 – DEM	15	85
Vote Cong. 2020 – UND	22	79
Republican	44	56
Democrat	20	80
Independent	16	84
Liberal	32	68
Moderate	20	80
Conservative	30	70
No College Degree	25	75
College Graduate	28	72
White	26	73
African- American	22	78
Hispanic	37	63
Under 55	34	66
Over 55	15	85
Married	32	68
Single	24	77
Men	34	66
Women	20	80

From the following list, which social media networks do you use?

	<u>Total</u>	<u>Rep</u>	<u>Dem</u>	<u>Ind</u>	<u>Lib</u>	<u>Mod</u>	<u>Cons</u>	<u>App. DJT</u>	<u>Disapp. DJT</u>	<u>Under 55</u>	<u>Over 55</u>	<u>Men</u>	<u>Wo- men</u>
Facebook	73	75	74	70	76	72	72	71	75	75	71	68	78
YouTube	57	54	62	53	66	54	53	54	59	64	46	59	55
Instagram	39	40	42	35	49	39	31	37	41	53	17	37	41
Twitter	32	32	37	27	42	32	26	32	33	42	17	36	29
Pinterest	30	34	30	25	36	27	27	28	32	32	26	18	40
Linked-In	23	26	24	19	31	22	18	19	26	26	18	25	21
Snapchat	21	24	23	16	29	21	15	21	22	32	4	18	24
Whatsapp	14	16	16	10	24	11	9	16	12	19	7	18	11
Reddit	9	9	11	8	15	8	7	9	10	14	2	11	8
Tumblr	6	9	7	3	11	4	5	7	5	9	1	6	6
Other	2	1	1	3	1	2	1	1	2	1	2	2	2
None	10	10	7	13	5	11	12	11	8	6	16	10	9

2020 Likely General Election Voter Profile

n= 1,000

<u>Party</u>	<u>Total</u>	<u>Age</u>	<u>Total</u>	<u>Region</u>	<u>TOTAL</u>
Republican	33	18-29	19	East	18
Democrat	36	30-40	19	Midwest	23
Independent	31	41-55	23	South	38
<u>Ideology</u>		56-65	19	West	21
Liberal	29	Over 65	20	<u>Area</u>	
Moderate	36	<u>Race</u>		Urban	30
Conservative	35	White	70	Suburban	46
<u>Voting Behavior</u>		African American	13	Rural	24
Definitely	82	Hispanic	13		
Very likely	14	Asian	4		
Somewhat Likely	4	<u>Gender</u>			
		Male	47		
		Female	53		



McLaughlin & Associates

New York Office

566 South Route 303

Blauvelt, NY 10913

845-365-2000

D.C./Virginia Office

919 Prince Street

Alexandria, VA 22314

703-518-4445

www.mclaughlinonline.com