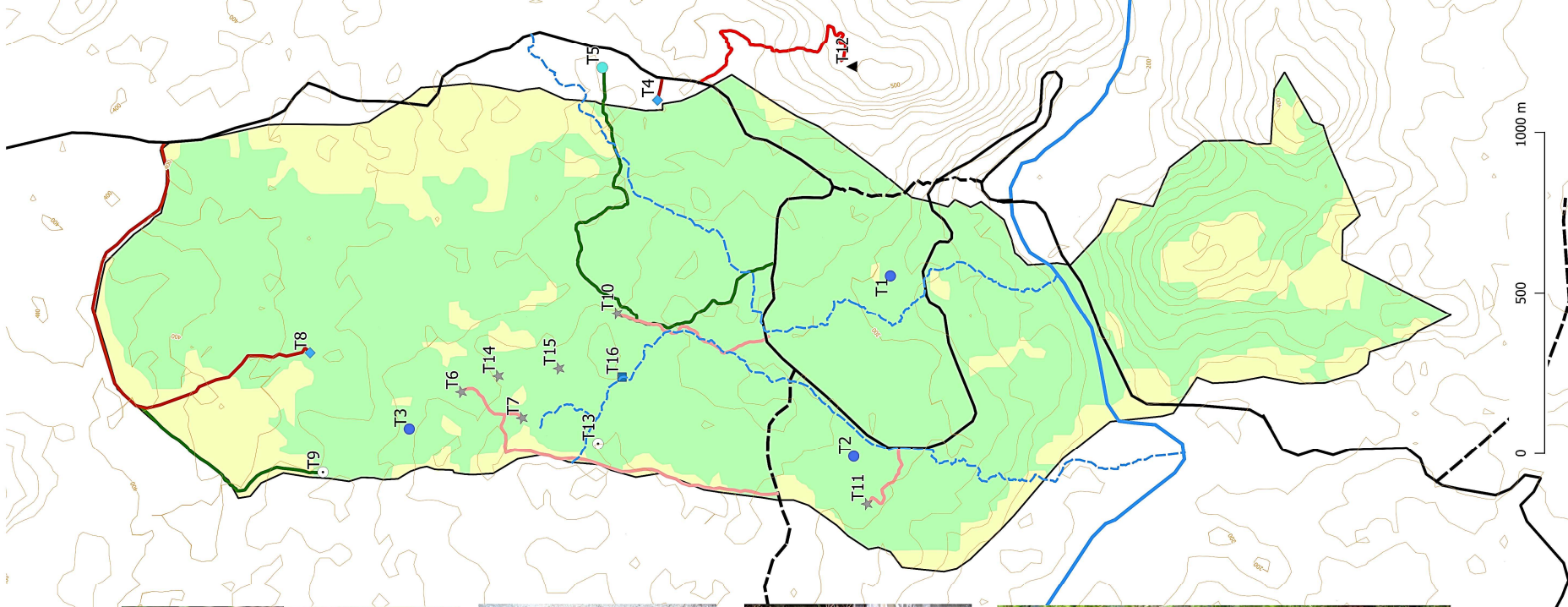
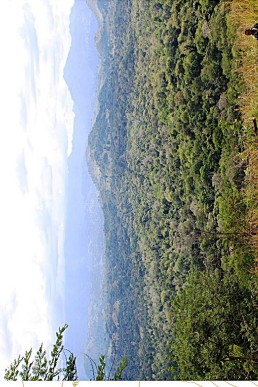
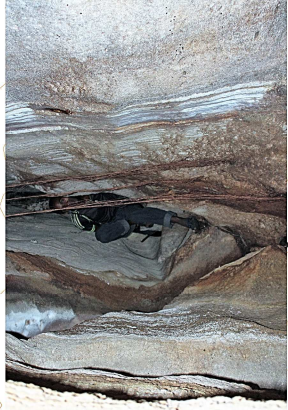
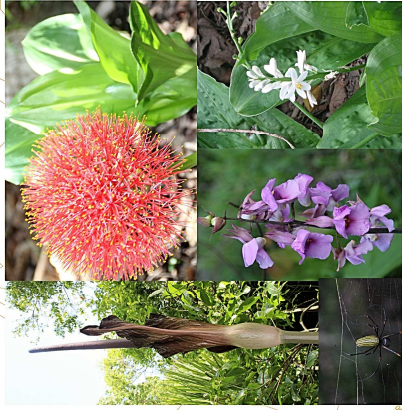


# KIMBOZA FOREST RESERVE LANDCOVER AND TOURISM ATTRactions



- Landcover**
  - Dense vegetation
  - Open vegetation
- Tourism Attraction**
  - Historical caves
  - Water spring
  - Butterfly breeding site
  - View point
  - Mysterious snake pond
  - Kimboza campsite
- Gecko view point**
- Trails**
- View point**
- Cultural historical sites**
- Striking endemic flora and fauna**
- Water spring**
- Stream**
- River**
- Roads**
- KFR boundary**

- T1 Gecko view point 1
- T2 Gecko view point 2
- T3 Gecko view point 3
- T4 Water spring I
- T5 Kimboza Campsite
- T6 Dago la njwa
- T7 Choka wahawi
- T8 Water spring II
- T9 Butterflies breeding site
- T10 Mapango venye milango mimane
- T11 Dago la mejambazi
- T12 Forest view point
- T13 Butterfly breeding site
- T14 Cave I
- T15 Cave II
- T16 Mysterious snake pond



Prepared by: Charles J. Kilawe; Oranga Emmanuel; Eutropia Kunambi; Bilali Omari; Jeremiah Paulo.

Data source: Landsat 8 October 2017 USGS earth explorer

Correspondence: ckilawe@sua.ac.tz