



Airport International Group  
مجموعة المطار الدولي

QAIA 3` `gS^Traffic Statistics  
2011



## **Introduction:**

Located 35 kilometres from the heart of the capital Amman, Queen Alia International Airport (QAIA) was inaugurated in 1983 to become Jordan's key gateway to the world. The airport currently services 5.42 million passengers per year, in addition to providing air cargo and other aviation support services. The airport was just ISO re-certified and AIG is investing systematically in upgrading technologies and work practices to enhance QAIA's customer service levels and operational performance.

The airport, which extends across 19 million square meters, includes two parallel runways stretching 3,660 meters in length and 61 meters in width, a separation area covering 1,446 square meters and an expansive parking area which can accommodate up to 32 aircraft. The airport's existing twin terminals each contains dedicated departure and arrival areas covering 68,000 square meters. The terminals are connected via a link bridge providing travellers convenient flight connections and access to various amenities including duty free stores, newsstands, restaurants, snack bars and coffee shops.

In November 2007, Airport International Group (AIG), under the terms of the 25-year concession agreement became responsible for the operation of the airport, the rehabilitation of existing facilities, and the construction of the new passenger terminal. AIG's total capital commitment is US\$700m (later increased to US\$800m to facilitate expansion/improvement of the design). Funding for the project has been secured through the International Finance Corporation (commercial arm of the World Bank), the Islamic Development Bank and a syndication of commercial lenders, as well as shareholder equity.

Today, QAIA is undergoing a complete transformation. The existing terminals are in the process of Refurbishment while, in parallel, extensive construction is underway to build a new 86,000 square meter state-of-the-art passenger terminal (design later expanded to 100,000 square meters) with the capacity to handle 9 million passengers per year in 2012.

## AIG Vision:

For Queen Alia International Airport to become the airport of choice in the region, building strong global connections for Jordan, and serving as a source of prosperity and pride for all Jordanians.

## AIG Mission:

To manage, operate, promote and maintain QAIA in a safe, friendly, efficient and profitable manner, delivering high quality services and facilities, applying best practices, technology, innovation, and investing in our people to exceed the expectations of our customers, partners, and travelling public.

## Corporate Values:

At AIG **Professionalism** is not an aspiration but the standard, where **Integrity**, **Work Ethics**, and **Teamwork** take us to new heights.

Our business is built on **Respect**, **Commitment** and **Passion** for delivering unparalleled levels of excellence and **Innovation**.



## Executive Summary:

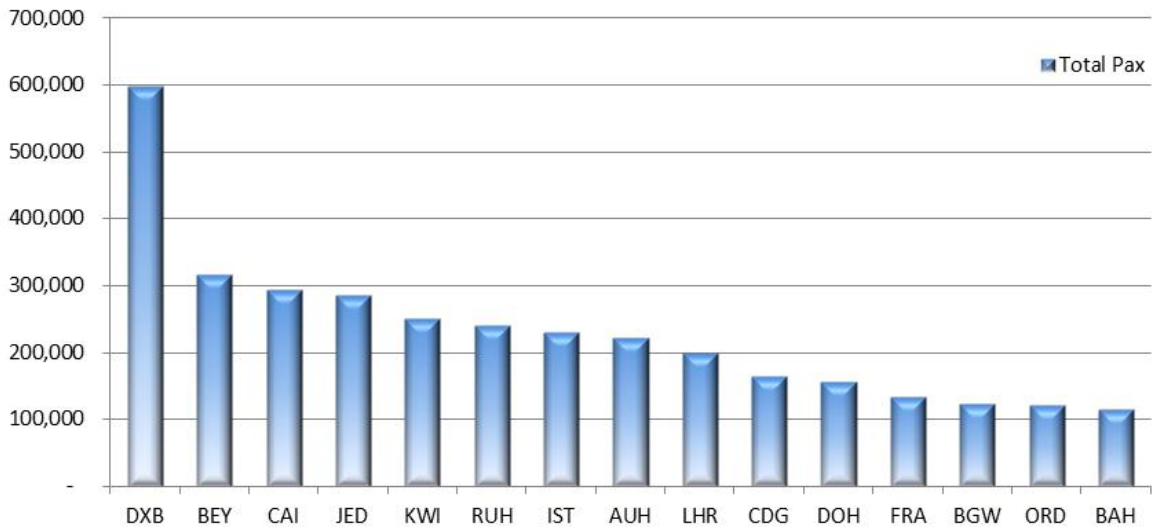
- Over 2010, AMM had witnessed remarkable growth in Total PAX & ACM, achieving a Year-over-Year (YoY) growth of **13.7%** and **8.8%** respectively, registering **5,422,301** passengers and **62,863** aircraft in 2010.
- On the back of the outstanding results achieved in 2009 and 2010, and despite the political unrest throughout the region, AMM had still registered a modest growth in 2011 in terms of PAX, and ACM.
- **2011** had witnessed a modest growth in total PAX recording **5,467,726** PAX, with **0.8%** Year-over-Year (YoY) growth.
- ACM totaled **63,426** movements compared to **62,863** last year, closing at a **0.9%** growth over last year.
- Cargo movements recorded **86,184** tons compared to **90,216** registering a decrease of **-4.5%** over 2010.
- Positive momentum had carried through 2011, with additional new services, carriers and frequencies added/announced, including RJ new service to Lagos & Nairobi, and Transaero Airlines adding services from Moscow. Furthermore, traffic started to pick up again from Egyptian & Libyan routes which shall drive further positive trends next year.
- 2011 have already witnessed a large number of airlines commencing or adding new or additional frequencies to AMM, including:

	Airline	Destination	Operation Type	Date of Operation
New Services	Easyjet	London-Gatwick	Scheduled	Mar-2011
	Armavia Air	Armenia	Charters	Mar-2011
	Royal Jordanian	Berlin	Scheduled	Jun-2011
	Transaero	Moscow	Scheduled	Sep-2011
	Royal Jordanian	Nairobi	Scheduled	Dec-2011
	Royal Jordanian	Lagos	Scheduled	Q1-2012
Increased Frequency	Royal Jordanian	Amsterdam	Scheduled	Apr-2011
		Mumbai	Scheduled	Apr-2011
		Brussels	Scheduled	Apr-2011
		Colombo	Scheduled	Apr-2011
		Rome	Scheduled	Apr-2011
		Larnaca	Scheduled	Apr-2011
		Medina	Scheduled	Apr-2011
		Munich	Scheduled	Apr-2011

	Airline	Destination	Operation Type	Date of Operation
Increased Frequency	Austrian Airlines	Vienna	Scheduled	Mar-2011
	Air Arabia-Sharjah	Sharjah	Scheduled	Mar-2011
	Egypt Air	Cairo	Scheduled	Mar-2011
	Alitalia	Rome	Scheduled	Mar-2011
	Nas Air	Jeddah	Scheduled	Apr-2011
	Nas Air	Riyadh	Scheduled	Apr-2011
	Nas Air	Medinah	Scheduled	Apr-2011
	Bmi	London	Scheduled	May-2011

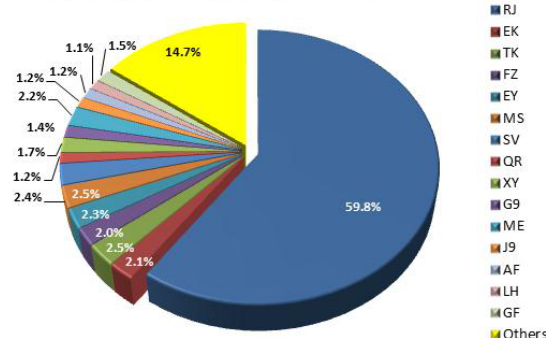
- Within the region, our most significant markets were DXB, BEY, CAI, JED, KWI collectively having ~ **1,740,685 PAX** (a **32%** of traffic) travelling in both directions
- In terms of the broader market (outside the region), the most significant markets were IST, LHR, CDG, FRA, ORD collectively having ~ **844,543 PAX** (a **15%** of traffic) travelling in both directions.
- The following represent our top 15 destinations with total traffic 2011.

**Top 15 Destinations - 2011**



- On the airlines' market shares side, based on ACMs, the top 5 airlines were RJ followed by EY, TK, FZ, and EK representing ~ **68.7%** of total ACM at AMM.

**Airlines Market Shares - 2011**



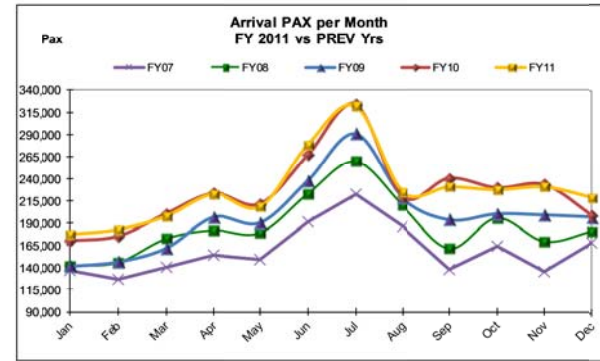
# QAIA Annual Traffic Statistics

## HISTORICAL PASSENGERS (PAX)

December 31, 2011

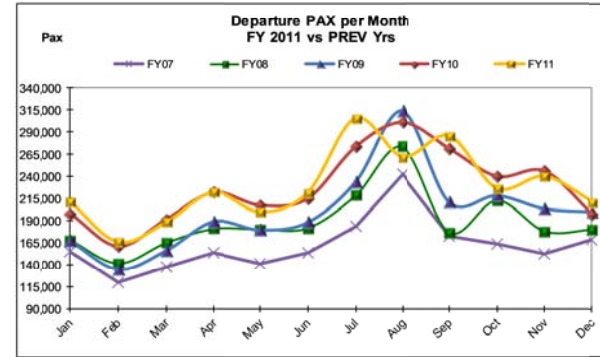
### TOTAL ARRIVAL PAX

Month	FY11	FY10	Var.%	FY09	Var.%	FY08	Var.%	FY07	Var.%
Jan	177,386	170,280	4.17%	141,455	25.39%	141,893	25.01%	136,584	29.87%
Feb	182,889	175,501	4.21%	146,445	24.89%	145,788	25.45%	127,330	43.63%
Mar	197,952	200,865	-1.45%	161,812	22.33%	172,465	14.78%	140,178	41.21%
Apr	222,993	223,776	-0.35%	196,986	13.20%	182,056	22.49%	154,607	44.23%
May	208,811	211,998	-1.50%	190,696	9.50%	179,219	16.51%	149,341	39.82%
Jun	278,591	267,169	4.28%	238,055	17.02%	223,175	24.83%	191,563	45.43%
Jul	322,221	323,531	-0.40%	290,910	10.76%	259,809	24.02%	223,250	44.33%
Aug	225,339	219,902	2.47%	218,876	2.95%	210,013	7.30%	187,112	20.43%
Sep	230,895	240,805	-4.12%	193,841	19.12%	161,400	43.06%	137,692	67.69%
Oct	227,821	230,025	-0.96%	200,516	13.62%	195,852	16.32%	163,732	39.14%
Nov	230,905	233,490	-1.11%	199,302	15.86%	169,325	36.37%	135,874	69.94%
Dec	219,027	198,671	10.25%	197,050	11.15%	180,855	21.11%	167,974	30.39%
YTD December	2,724,830	2,696,013	1.07%	2,375,964	14.68%	2,221,850	22.64%	1,915,237	42.27%
Total	2,724,830	2,696,013		2,375,964		2,221,850		1,915,237	
Year-over-Year Growth		13.47%		6.94%		16.01%			



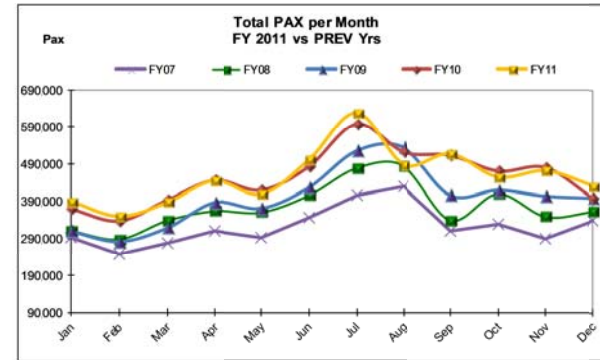
### TOTAL DEPARTURE PAX

Month	FY11	FY10	Var.%	FY09	Var.%	FY08	Var.%	FY07	Var.%
Jan	211,614	198,182	6.78%	167,021	26.70%	168,038	25.93%	154,803	36.70%
Feb	165,943	161,022	3.06%	134,655	23.23%	141,376	17.38%	119,352	39.04%
Mar	188,251	191,550	-1.72%	155,989	20.68%	164,799	14.23%	137,580	36.83%
Apr	222,533	222,291	0.11%	189,009	17.74%	180,695	23.15%	154,309	44.21%
May	200,016	207,608	-3.66%	179,498	11.43%	180,216	10.99%	141,320	41.53%
Jun	221,971	215,239	3.13%	188,203	17.94%	181,706	22.16%	153,326	44.77%
Jul	305,748	273,537	11.78%	233,716	30.82%	218,293	40.06%	183,774	66.37%
Aug	262,141	301,192	-12.97%	314,235	-16.58%	273,545	-4.17%	243,280	7.75%
Sep	285,658	271,650	5.16%	210,831	35.49%	176,597	61.76%	173,131	65.00%
Oct	226,741	240,282	-5.64%	218,336	3.85%	212,812	6.55%	163,337	38.82%
Nov	240,357	246,158	-2.36%	203,441	18.15%	177,992	35.04%	152,870	57.23%
Dec	211,923	197,577	7.26%	199,861	6.04%	179,892	17.81%	168,807	25.54%
YTD December	2,742,896	2,726,288	0.61%	2,394,305	14.54%	2,255,961	21.58%	1,945,889	40.96%
Total	2,742,896	2,726,288		2,394,305		2,255,961		1,945,889	
Year-over-Year Growth		13.84%		6.15%		15.93%			



### TOTAL PAX COMBINED

Month	FY11	FY10	Var.%	FY09	Var.%	FY08	Var.%	FY07	Var.%
Jan	389,000	368,462	5.57%	308,486	26.10%	309,931	25.51%	291,387	33.50%
Feb	348,832	336,523	3.66%	281,110	24.09%	287,164	21.47%	246,682	41.41%
Mar	386,203	392,415	-1.58%	317,801	21.52%	337,264	14.51%	277,758	39.04%
Apr	445,526	446,067	-0.12%	385,995	15.42%	362,751	22.82%	308,916	44.22%
May	408,827	419,606	-2.57%	370,194	10.44%	359,435	13.74%	290,661	40.65%
Jun	500,562	482,408	3.76%	426,258	17.43%	404,881	23.63%	344,889	45.14%
Jul	627,969	597,068	5.18%	524,626	19.70%	478,102	31.35%	407,024	54.28%
Aug	487,480	521,094	-6.45%	533,111	-8.56%	483,558	0.81%	430,392	13.26%
Sep	516,553	512,455	0.80%	404,672	27.65%	337,997	52.83%	310,823	66.19%
Oct	454,562	470,307	-3.35%	418,852	8.53%	408,664	11.23%	327,069	38.98%
Nov	471,262	479,648	-1.75%	402,743	17.01%	347,317	35.69%	288,744	63.21%
Dec	430,950	396,248	8.76%	396,911	8.58%	360,747	19.46%	336,781	27.96%
YTD December	5,467,726	5,422,301	0.84%	4,770,769	14.61%	4,477,811	22.11%	3,861,126	41.61%
Total	5,467,726	5,422,301		4,770,769		4,477,811		3,861,126	
Year-over-Year Growth		13.66%		6.54%		15.97%			



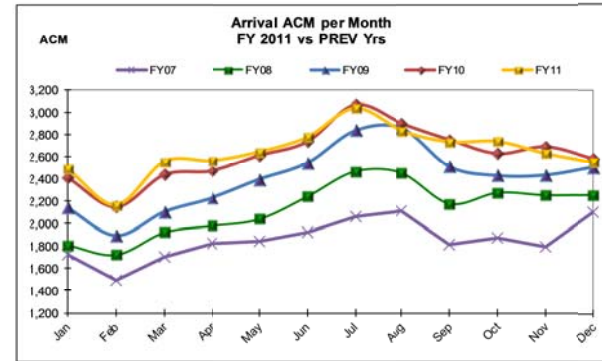
# QAIA Annual Traffic Statistics

## AIRCRAFT MOVEMENTS (ACM)

December 31, 2011

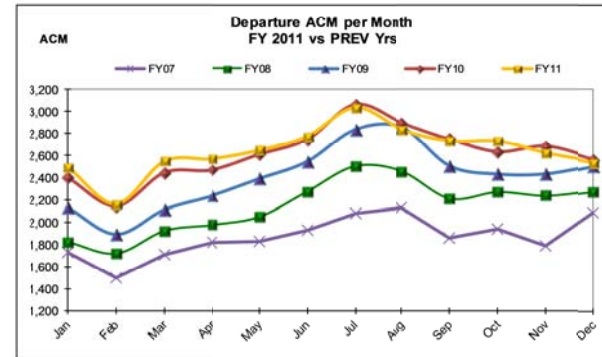
### TOTAL ARRIVAL ACM

Month	FY11	FY10	Var %	FY09	Var %	FY08	Var %	FY07	Var %
Jan	2,487	2,410	3.20%	2,139	16.27%	1,807	37.63%	1,722	44.43%
Feb	2,167	2,149	0.84%	1,894	14.41%	1,721	25.92%	1,498	44.66%
Mar	2,556	2,437	4.88%	2,106	21.37%	1,920	33.13%	1,702	50.18%
Apr	2,564	2,472	3.72%	2,230	14.98%	1,979	29.56%	1,823	40.65%
May	2,645	2,611	1.30%	2,396	10.39%	2,039	29.72%	1,842	43.59%
Jun	2,777	2,736	1.50%	2,543	9.20%	2,240	23.97%	1,924	44.33%
Jul	3,038	3,068	-0.98%	2,836	7.12%	2,466	23.20%	2,063	47.26%
Aug	2,833	2,899	-2.28%	2,856	-0.81%	2,449	15.68%	2,112	34.14%
Sep	2,735	2,753	-0.65%	2,509	9.01%	2,177	25.63%	1,818	50.44%
Oct	2,737	2,628	4.15%	2,429	12.68%	2,275	20.31%	1,877	45.82%
Nov	2,628	2,690	-2.30%	2,434	7.97%	2,253	16.64%	1,791	46.73%
Dec	2,547	2,582	-1.36%	2,506	1.64%	2,256	12.90%	2,101	21.23%
YTD December	31,714	31,435	0.89%	28,878	9.82%	25,582	23.97%	22,273	42.39%
Total	31,714	31,435		28,878		25,582		22,273	
Year-over-Year Growth		8.85%		12.88%		14.86%			



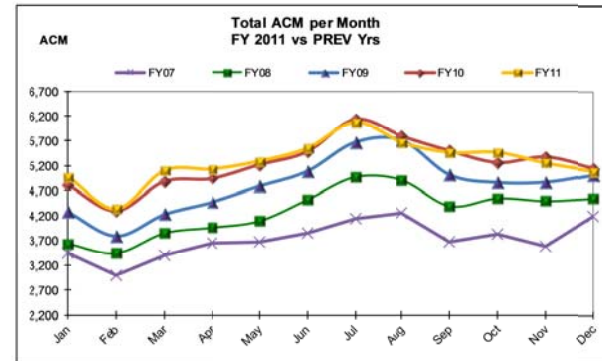
### TOTAL DEPARTURE ACM

Month	FY11	FY10	Var %	FY09	Var %	FY08	Var %	FY07	Var %
Jan	2,495	2,401	3.92%	2,132	17.03%	1,825	36.71%	1,725	44.64%
Feb	2,166	2,146	0.93%	1,893	14.42%	1,720	25.93%	1,499	44.50%
Mar	2,548	2,446	4.17%	2,114	20.53%	1,924	32.43%	1,706	49.36%
Apr	2,570	2,470	4.05%	2,238	14.83%	1,977	29.99%	1,821	41.13%
May	2,648	2,610	1.46%	2,391	10.75%	2,050	29.17%	1,834	44.38%
Jun	2,775	2,747	1.02%	2,546	8.99%	2,276	21.92%	1,927	44.01%
Jul	3,038	3,066	-0.91%	2,837	7.08%	2,504	21.33%	2,076	46.34%
Aug	2,835	2,896	-2.11%	2,856	-0.74%	2,456	15.43%	2,133	32.91%
Sep	2,734	2,748	-0.51%	2,506	9.10%	2,213	23.54%	1,860	46.99%
Oct	2,731	2,635	3.64%	2,432	12.29%	2,270	20.31%	1,940	40.77%
Nov	2,625	2,686	-2.27%	2,434	7.85%	2,237	17.34%	1,788	46.81%
Dec	2,547	2,577	-1.16%	2,509	1.51%	2,280	11.71%	2,090	21.87%
YTD December	31,712	31,428	0.90%	28,888	9.78%	25,732	23.24%	22,399	41.58%
Total	31,712	31,428		28,888		25,732		22,399	
Year-over-Year Growth		8.79%		12.26%		14.88%			



### TOTAL ACM COMBINED

Month	FY11	FY10	Var %	FY09	Var %	FY08	Var %	FY07	Var %
Jan	4,982	4,811	3.55%	4,271	16.65%	3,632	37.17%	3,447	44.53%
Feb	4,333	4,295	0.88%	3,787	14.42%	3,441	25.92%	2,997	44.58%
Mar	5,104	4,883	4.53%	4,220	20.95%	3,844	32.78%	3,408	49.77%
Apr	5,134	4,942	3.89%	4,468	14.91%	3,956	29.78%	3,644	40.89%
May	5,293	5,221	1.38%	4,787	10.57%	4,089	29.44%	3,676	43.99%
Jun	5,552	5,483	1.26%	5,089	9.10%	4,516	22.94%	3,851	44.17%
Jul	6,076	6,134	-0.95%	5,673	7.10%	4,970	22.25%	4,139	46.80%
Aug	5,668	5,795	-2.19%	5,712	-0.77%	4,905	15.56%	4,245	33.52%
Sep	5,469	5,501	-0.58%	5,015	9.05%	4,390	24.58%	3,678	48.69%
Oct	5,468	5,263	3.90%	4,861	12.49%	4,545	20.31%	3,817	43.25%
Nov	5,253	5,376	-2.29%	4,868	7.91%	4,490	16.99%	3,579	46.77%
Dec	5,094	5,159	-1.26%	5,015	1.58%	4,536	12.30%	4,191	21.55%
YTD December	63,426	62,863	0.90%	57,766	9.80%	51,314	23.60%	44,672	41.98%
Total	63,426	62,863		57,766		51,314		44,672	
Year-over-Year Growth		8.82%		12.57%		14.87%			

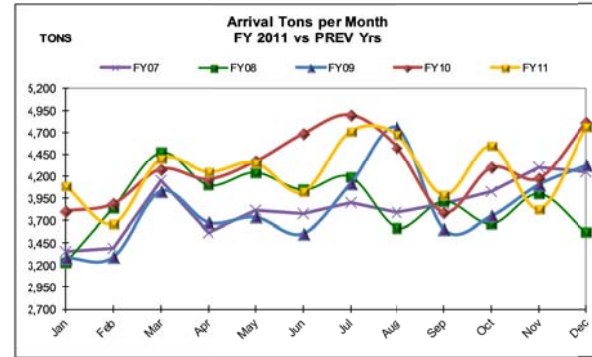


# QAIA Annual Traffic Statistics

## CARGO (TONS) December 31, 2011

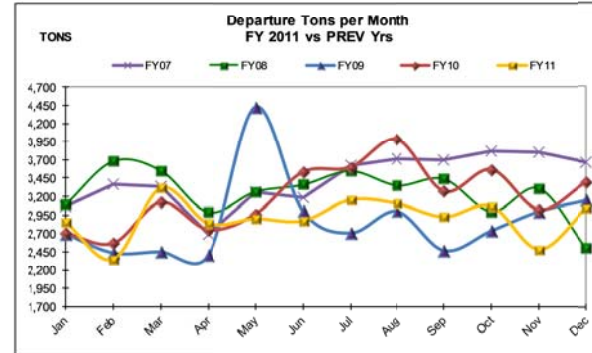
### CARGO (TONS) ARRIVAL

Month	FY11	FY10	Var.%	FY09	Var.%	FY08	Var.%	FY07	Var.%
Jan	4,089	3,809	7.37%	3,285	24.49%	3,227	26.70%	3,356	21.84%
Feb	3,665	3,890	-5.77%	3,293	11.33%	3,847	-4.71%	3,396	7.93%
Mar	4,398	4,282	2.71%	4,033	9.06%	4,471	-1.62%	4,156	5.82%
Apr	4,248	4,168	1.92%	3,681	15.41%	4,100	3.61%	3,565	19.16%
May	4,352	4,370	-0.41%	3,739	16.41%	4,242	2.60%	3,813	14.16%
Jun	4,024	4,686	-14.11%	3,557	13.14%	4,048	-0.58%	3,783	6.39%
Jul	4,713	4,902	-3.87%	4,118	14.45%	4,192	12.43%	3,904	20.72%
Aug	4,671	4,528	3.15%	4,757	-1.80%	3,619	29.07%	3,787	23.34%
Sep	3,989	3,792	5.19%	3,605	10.66%	3,919	1.79%	3,887	2.64%
Oct	4,545	4,300	5.70%	3,752	21.13%	3,664	24.05%	4,025	12.91%
Nov	3,830	4,178	-8.33%	4,108	-6.76%	4,002	-4.30%	4,299	-10.90%
Dec	4,759	4,814	-1.13%	4,324	10.07%	3,562	33.60%	4,257	11.80%
YTD December	51,285	51,720	-0.84%	46,250	10.89%	46,893	9.37%	46,228	10.94%
Total	51,285	51,720		46,250		46,893		46,228	
Year-over-Year Growth		11.83%		-1.37%		1.44%			



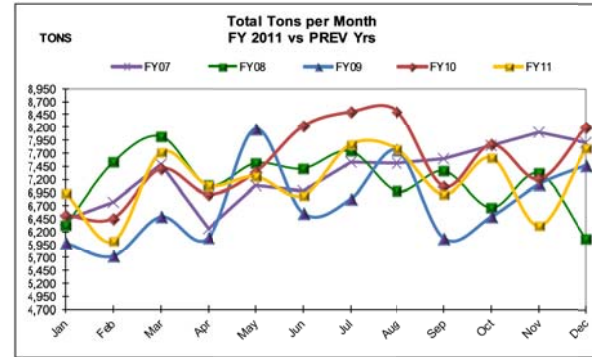
### CARGO (TONS) DEPARTURE

Month	FY11	FY10	Var.%	FY09	Var.%	FY08	Var.%	FY07	Var.%
Jan	2,851	2,706	5.34%	2,695	5.77%	3,093	-7.82%	3,067	-7.04%
Feb	2,349	2,569	-8.56%	2,436	-3.59%	3,680	-36.17%	3,369	-30.28%
Mar	3,315	3,122	6.21%	2,451	35.29%	3,551	-6.62%	3,334	-0.55%
Apr	2,838	2,753	3.06%	2,400	18.23%	2,989	-5.06%	2,688	5.56%
May	2,900	2,963	-2.15%	4,427	-34.51%	3,265	-11.19%	3,269	-11.30%
Jun	2,872	3,533	-18.70%	3,005	-4.41%	3,360	-14.52%	3,192	-10.00%
Jul	3,157	3,600	-12.29%	2,707	16.64%	3,546	-10.97%	3,621	-12.81%
Aug	3,106	3,985	-22.06%	3,002	3.45%	3,350	-7.29%	3,716	-16.44%
Sep	2,925	3,273	-10.65%	2,469	18.46%	3,438	-14.94%	3,706	-21.08%
Oct	3,068	3,568	-14.02%	2,737	12.09%	2,997	2.34%	3,815	-19.60%
Nov	2,484	3,024	-17.86%	2,998	-17.14%	3,309	-24.94%	3,809	-34.78%
Dec	3,034	3,400	-10.75%	3,150	-3.67%	2,491	21.81%	3,662	-17.13%
YTD December	34,898	38,496	-9.35%	34,477	1.22%	39,069	-10.68%	41,247	-15.39%
Total	34,898	38,496		34,477		39,069		41,247	
Year-over-Year Growth		11.66%		-11.75%		-5.28%			



### TOTAL CARGO (TONS) COMBINED

Month	FY11	FY10	Var.%	FY09	Var.%	FY08	Var.%	FY07	Var.%
Jan	6,940	6,515	6.52%	5,980	16.05%	6,320	9.81%	6,423	8.05%
Feb	6,014	6,459	-6.88%	5,729	4.98%	7,526	-20.09%	6,765	-11.10%
Mar	7,714	7,404	4.18%	6,483	18.98%	8,021	-3.83%	7,490	2.99%
Apr	7,086	6,921	2.37%	6,081	16.53%	7,089	-0.05%	6,253	13.31%
May	7,252	7,334	-1.11%	8,166	-11.20%	7,507	-3.39%	7,082	2.41%
Jun	6,897	8,219	-16.09%	6,562	5.10%	7,408	-6.90%	6,974	-1.11%
Jul	7,870	8,502	-7.43%	6,825	15.32%	7,738	1.71%	7,525	4.59%
Aug	7,777	8,513	-8.65%	7,759	0.23%	6,969	11.59%	7,504	3.64%
Sep	6,914	7,065	-2.15%	6,074	13.83%	7,357	-6.03%	7,592	-8.94%
Oct	7,612	7,867	-3.24%	6,489	17.31%	6,661	14.28%	7,840	-2.91%
Nov	6,314	7,203	-12.33%	7,106	-11.14%	7,312	-13.64%	8,108	-22.12%
Dec	7,794	8,213	-5.11%	7,474	4.28%	6,053	28.75%	7,919	-1.58%
YTD December	86,184	90,216	-4.47%	80,727	6.76%	85,962	0.26%	87,475	-1.48%
Total	86,184	90,216		80,727		85,962		87,475	
Year-over-Year Growth		11.75%		-6.09%		-1.73%			





## **Feedback & Comments**

For feedback, comments or any other enquiries, please do not hesitate to contact the Route Development Department at:

– *Tel: +962 (6) 445 3000*

*Fax: +962 (6) 445 3444*

[RD@aig.aero](mailto:RD@aig.aero)

[www.aig.aero](http://www.aig.aero)

*Airport International Group*

*P.O. Box 39052*

*Amman 11104*

*Jordan*