

THE ALUCIA

For more information: aluciaproductions.com
Follow us: [@aluciaproductions](https://www.instagram.com/aluciaproductions)



The ALUCIA is a 56-meter research and exploration vessel that facilitates a wide range of diving, submersible and aerial operations.

SHIP SPECS

Length	56 m (184')
Beam	12 m (40')
Hull	Steel
Generators	3x298KW Detroit Series 60
Average Speed	10 knots
Draft	17.9 feet
Alucia's Air Draft	65 feet
Hours of Operation	12 consecutive hrs per day

ACCOMMODATION

Guests	10 - 14 media berths
Crew	22
WiFi	Shipwide

SUBMARINE CAMERAS

- Two 8K Red cameras:
 - 15.5-47mm T2.8 Canon Cine Lens
 - 70-180mm f/4.5-5.6D Nikon Micro Lens
- Super low light Canon ME20
 - 50mm F1.2L canon Prime Lens
- 2 custom underwater housings rated to 1000m
- 2 Gratical HD EVF viewfinders
- Lighting
 - 4x internal white/infrared lights
 - 6x lighting channels
 - 4x APHOS 16 (28,000 lumen LED)
 - 3x DHPL Matrix (5,900 lumen LED)
 - Lasers for optical size reference

DIVE CENTER

- Nitrox gas membrane production system with dual redundancy and bank storage
- Oxygen generator
- Rebreather support
- Commercial specification dual-lock re-compression chamber
- Full trimix blending
- Dive capabilities for all climates
- Sub to diver comms for 3

TRITON SUB



- 2 passengers & 1 pilot
- Depth: 950m (3,116')
- 6 - 8 hrs dive time
- Four Cathx lights (20k lumen each)
- Manipulator arm & sample platform for collecting samples*

* Science sampling specs available upon request

DEEP ROVER SUB



- 1 passenger & 1 pilot
- Depth: 950m (3,116')
- 6 - 8 hrs dive time
- Four Cathx lights (20k lumen each)
- Manipulator arm & sample platform for collecting samples*

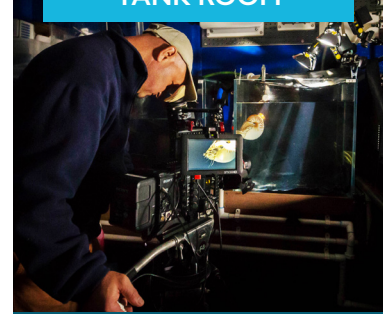
* Science sampling specs available upon request

A-STAR & HELI PAD



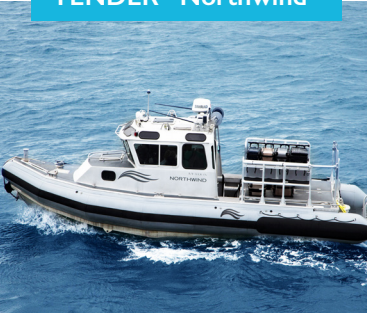
- 5 passengers & 1 pilot max
- Average speed: 100 - 120 knots
- Range: 120 nm of ship
- 24v utility plugs for monitors
- Cineflex/GSS vibration isolation arm
- 1900lb Cargo Capacity
- Ship to heli comms via 2 VHF radios
- Medical litter kit/High skid gear

TANK ROOM



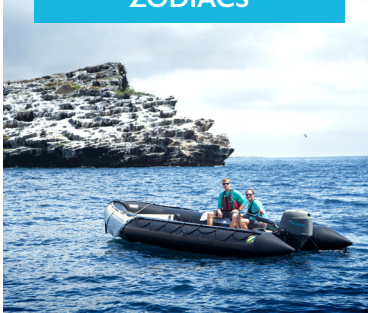
- 2 tanks
 - Small tank 19"x11"x19" (HxLxW)
 - Large tank 19"x15"x47" (HxLxW)
- Temperature controlled water
- Seawater continuously pumped in via filters

TENDER "Northwind"



- 32ft aluminum hull RHIB
- 2x Yanmar 315 hp
- Cruising speed: 25 knots
- Range: 8hrs/200 mi
- Power: 110V via 12V-110V inv. 30amp
- Custom Cineflex/GSS mount

ZODIACS



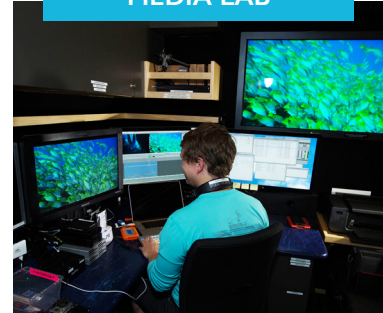
- Zodiac RHIB, hard bottom: 19ft
 - 8 passengers & 1 pilot
- Zodiac, soft bottom: 19ft
 - 8 passengers & 1 pilot

MISSION CONTROL



- Reson 7160 Multibeam
- Knudsen Chirp Sonar 3202
- C-Nav Precision GPS
- CTD (temp/salinity)

MEDIA LAB



- 4K monitors
- Two twelve core mac edit stations
- Adobe Creative Suite
- Red rocket-x for playback