

219s-03 See-through Motif Top



Suggested yarn:

- Pierrot Yarns Graceful Linen [100% linen; 828 yds/757m per 3.53 oz./100g cone]; color #01 ivory, 3 cones [270g]

Tools/Notions:

- 2.3mm (approx. US B) crochet hook or size necessary to achieve gauge

Finished measurements:

- bust 96cm/37.8"
- center back neck-to-cuff 56.5cm/22.2"
- back length 56.5cm/22.2"

Gauge:

- Each motif should measure 8cm/3.1" square.

Gauge may vary according to individual crochet style. Change hook size if necessary to achieve gauge. Alternatively, rework pattern with your own gauge measurements.

Summary

✳️ **Note 1:** Like all Japanese patterns, stitch counts given here for foundation chains do not include any chain sts needed for turning posts.

✳️ **Note 2:** Entire garment worked with 2 strands of yarn held together.

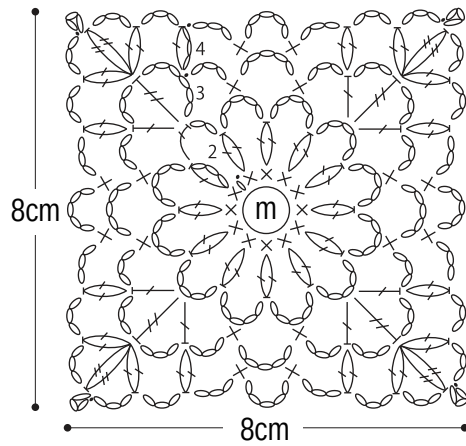
Body & sleeves: Work magic ring to begin, then crochet motif according to chart. Starting with second motif, join motifs together on the last round using slip stitch.



Finishing: Crochet edging in the round around hem, neckline, and cuffs, respectively.

Abbreviations:

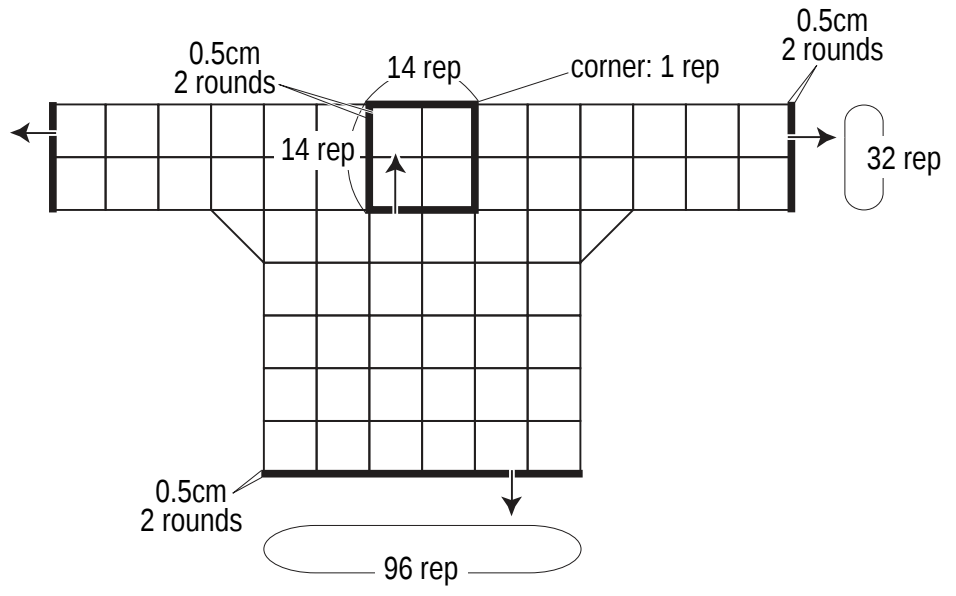
ch = chain cd = double crochet (US) m = magic ring/circle rep = pattern repeat(s) tr = treble crochet (US)

Motif 2.3mm hook

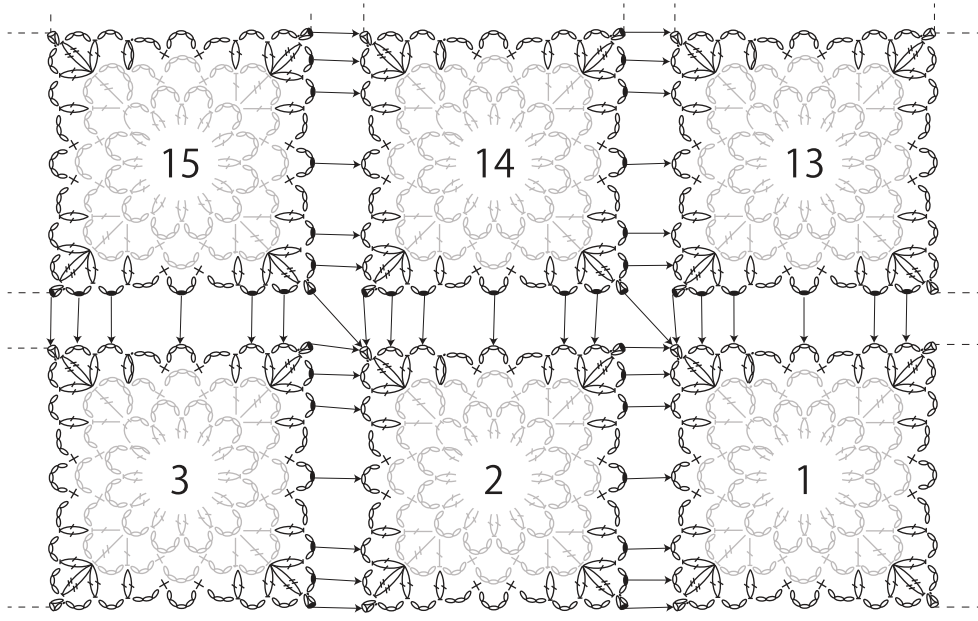


 = 2-dc cluster stitch
 = 2-tr cluster stitch

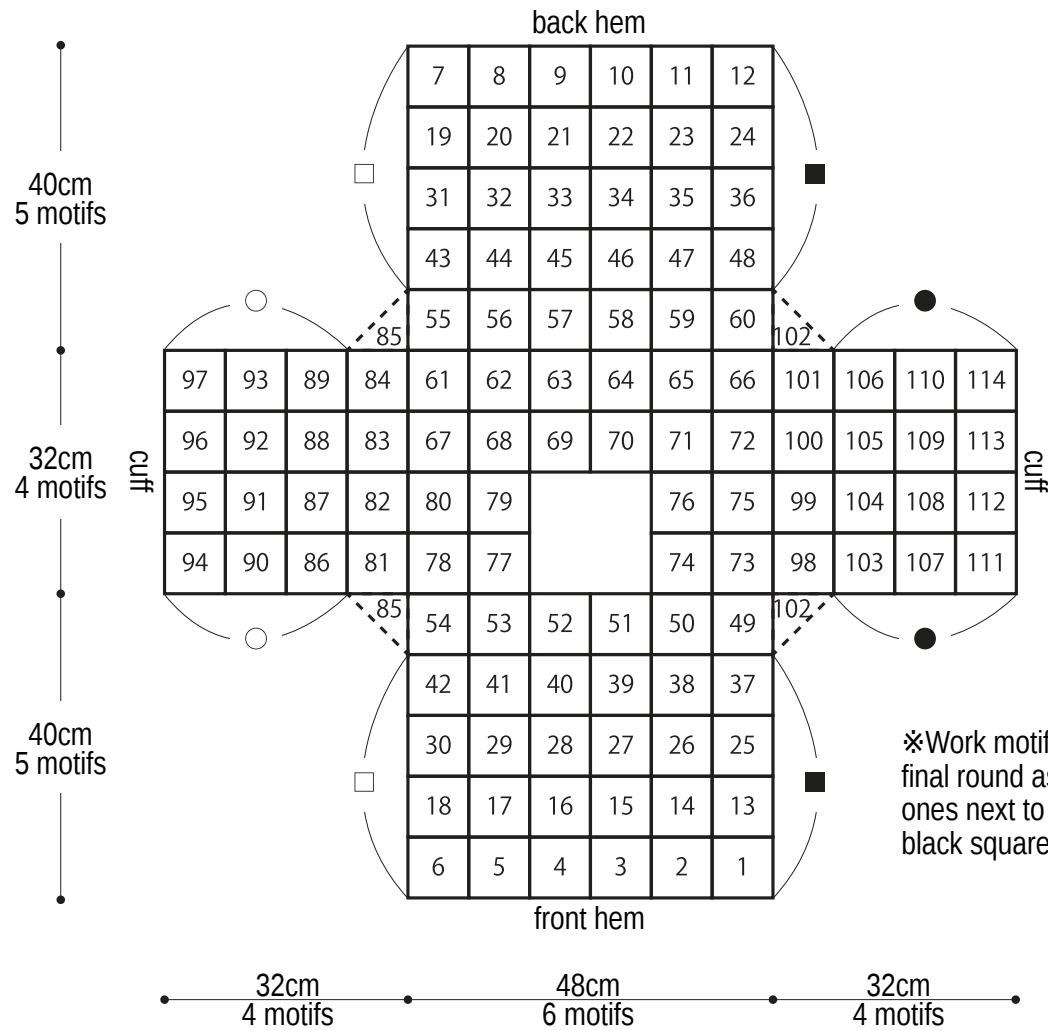
Finishing edging: 2.3mm hook



How to join motifs



Motif joining order



※Work motifs in order from 1 to 114, joining together with slip stitch on the final round as shown on previous page. In addition to joining motifs to the ones next to them, also match up the shape symbols (for example, match black square to black square) and join motifs along those edges as well.

Edging

