

C H E V R O L E T



C A M A R O



1 9 9 1

C A M A R O

C O N T E N T S

2

CAMARO – AN AMERICAN
PERFORMANCE LEGEND

6

CAMARO RS

10

CAMARO Z28

16

INTERIORS

18

STANDARD FEATURES

20

OPTIONS

22

ADDITIONAL INFORMATION

Welcome to Camaro for 1991. It's the newest version of the sports machine that's been winning hearts since the Sixties.

Camaro is the contemporary 2+2 coupe with a wholly American sense of style. A young attitude. And above all, an emphasis on the great sport of driving.

The shape of Camaro remains classically low and aggressive. The driving environment is, at once, sporty and luxurious. A rear-drive design provides the balance and feel you expect in a performance coupe. And Camaro's engine lineup ranges from a fuel-injected V6 to a 245 HP V8.

Camaro excitement, '91 style, includes the popular RS series that combines pulse-quickenning style with affordability. There's even a choice of coupe or convertible body styles. And for those who seek the ultimate in Camaro thunder, the legendary Z28 returns for 1991.

When it comes to sporty cars, nobody's winning like the Heartbeat of America.

I
N
T
R
O
D
U
C
T
I
O
N



AN AMERICAN PERFORMANCE LEGEND

Right from the start—in 1967—Chevrolet knew automotive enthusiasts and the press would be looking hard at its new four-seat sportster. Chevy named the car Camaro, and the rest is the stuff of legends.

All through the summer of 1966, car buffs had been eagerly awaiting “Chevy’s answer to the Mustang.” This would have to be more than just another new car—it would have to be an event really worth waiting for.

And it was.

The 1967 Camaro put the American sporty car in a whole new league with its curvaceous, racy styling, responsive Chevy V8 power and very personal appeal.

That appeal started with a catalog full of choices, including a coupe, a convertible, the RS appearance option with hidden headlamps and a performance-oriented SS package with “bumblebee” stripes around its nose. An SS Convertible with the optional 396 V8 was chosen as the 1967 Indianapolis 500 pace car. In mid-1967, the soon-to-be-legendary Z28 was announced. During the 1968-69 seasons, specially modified Camaro Z28s made quick work of the “pony car” competition by winning 18 out of 25 races in the SCCA-sanctioned Trans Am series.

Camaro ‘68 became “the closest thing to a ‘Vette yet” and “the Hugger” in advertising copy. Refinements for 1968 included Astro Ventilation to replace side vent windows, new side marker lights and more luxurious interior trim.

A more muscular interpretation of previous Camaro styling themes greeted enthusiasts in 1969. And the ‘69 Z28 quickly became a legend for the street as well as racetrack. For the second time in three years, a white SS Convertible was chosen to pace the Indy 500.

An all-new “second-generation” Camaro was introduced for 1970. This smooth, trend-setting design, available in a coupe body style only, continued through 1981. The Z28 was temporarily dropped in 1974 but was back by mid-1977 as interest in performance cars returned.

The “third-generation” Camaro arrived in 1982 to rave reviews that included *Motor Trend*’s prestigious “Car of the Year” award. A Z28 was the ‘82 Indy 500 pace car.

In the Eighties, Camaro continued to provide the performance its futuristic shape promised. For 1985 the Z28 received a special IROC-Z performance option (to commemorate the specially prepared Camaro Z28s that competed in the 1984-1989 International Race of Champions series). The IROC-Z option included monochromatic paint, 16” wheels and unidirectional tires. The Camaro convertible returned in 1987, after an 18-year absence.

A high-style RS Coupe also returned in 1989. This current-generation RS retained its sporty heritage, but became Camaro’s most affordable, most popular model.

For ‘91, Camaro RS continues its winning ways, but adds new lower body panels and new optional 16” wheels. And for those dedicated buffs who can relate to the mellow sounds of a 5.7 Liter small-block V8, a new chapter in “Z” performance begins on page 10.

JOHNNIE'S

broiler

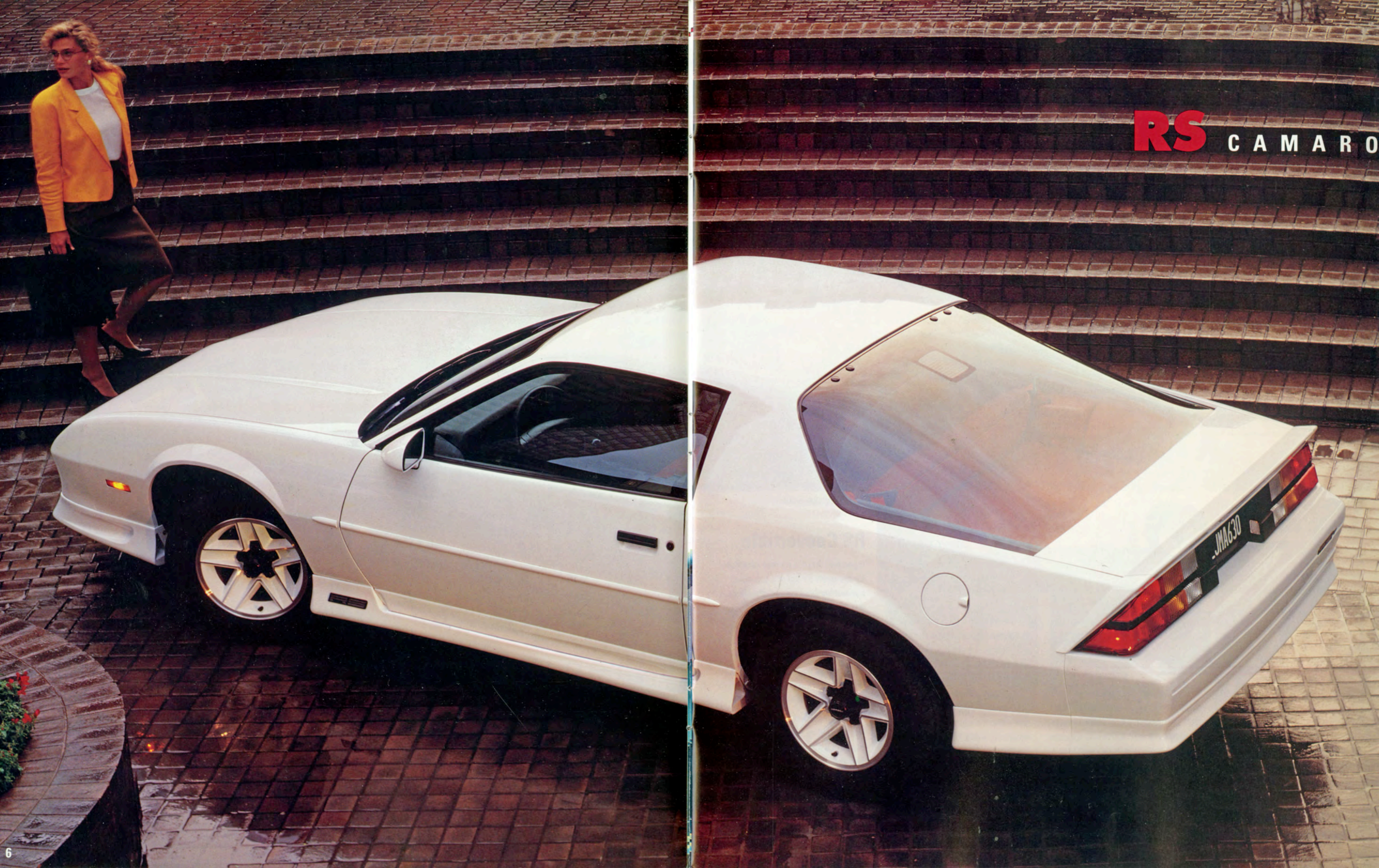


FAMILY
RESTAURANT
COFFEE SHOP

COFFEE SHOP

CAMARO THUNDER





RS CAMARO

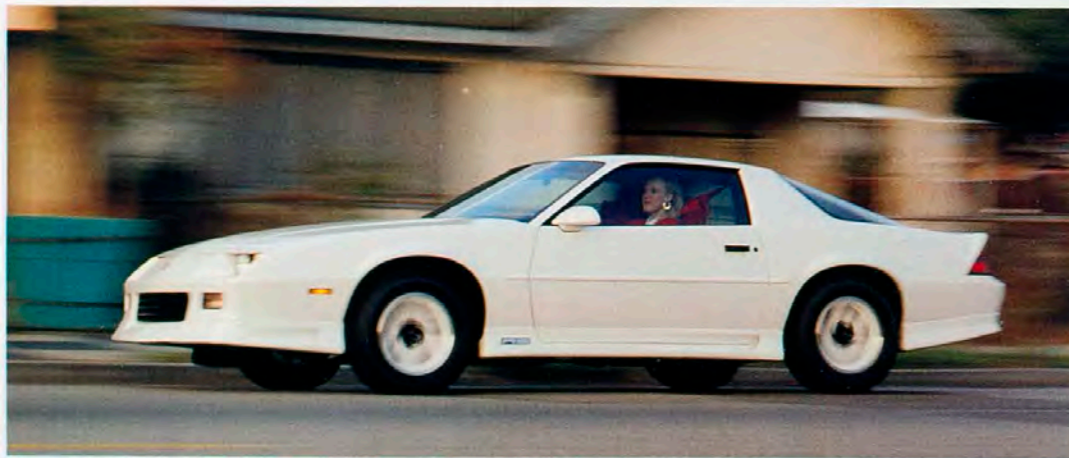
RS CAMARO

The fun-to-drive RS is the classic Camaro in its purest, most affordable form.

RS Coupe is one sophisticated 2+2, with reasons to buy that go beyond a sleekly styled exterior.

Consider RS the more practical, easier-to-own Camaro. Standard features include a lively 3.1 Liter V6 engine with Multi-Port Fuel Injection, 5-speed manual transmission (a 4-speed automatic is optional), Delco AM/FM stereo sound system and specific spring rates for pleasing ride and handling.

Exterior design highlights include sporty aero skirting, 15" x 7" aluminum wheels and high-luster base-coat / clear-coat paint.



Camaro RS Coupe.



The Personalized Automotive Security System (PASS-Key[®]) is standard on every 1991 Camaro. PASS-Key[®] utilizes a resistance-coded ignition key that must match on-board security electronics to start the engine. This system may qualify you for comprehensive insurance discounts.

Camaro RS is also a very personal coupe, offering a wide choice of Preferred Equipment Groups and individually available options. Popular options include the 5.0 Liter V8 with Electronic Fuel Injection, removable "T-top" roof panels and a Delco/Bose stereo music system. A new performance option for 1991 is a 16" aluminum wheel/tire combination (available with the optional 5.0 Liter V8 only).



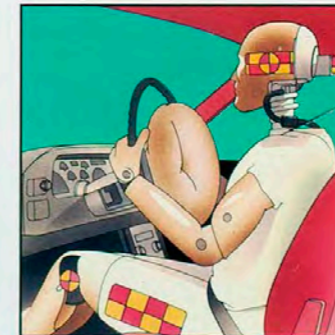
Camaro RS Convertible.

RS Convertible

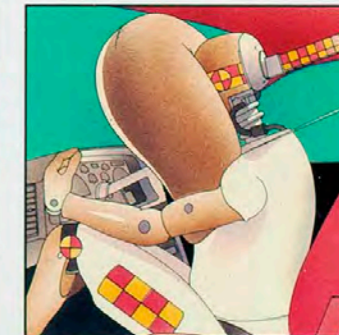
If you feel there is no real substitute for the open-air fun of a top-down convertible (and many enthusiasts do), this 1991 Camaro RS just might be your dream come true.

Camaro RS Convertible delivers performance to accent its breezy style, with a standard 5.0 Liter V8 engine and a suspension specifically tuned for this application.

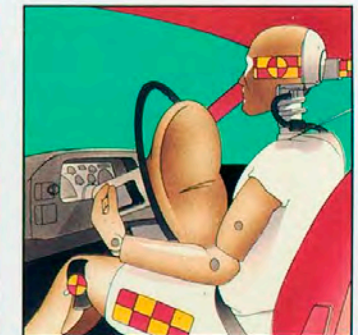
Another feature that sets RS apart is a full-folding top that fits neatly beneath a fiberglass tonneau cover. The lightweight, manually operated top goes up or down quickly and easily.



A driver's-side Supplemental Inflatable Restraint system (air bag) is standard on every 1991 Camaro. It can help protect the driver in certain frontal collisions. Sensors in the engine compartment and passenger compartment react as soon as



the car is involved in a moderate to severe frontal impact and instantaneously inflate a protective "air bag" located in the steering wheel hub. The air bag is a supplemental system only



and was designed for use in conjunction with safety belts. For maximum protection in frontal and all other collisions, all occupants must be properly restrained with safety belts.

Z28 C A M A R O



Z28 CAMARO



Camaro Z28 Coupe.

There have been Z28s before, but there has never been a Z28 like this before. Introducing the maximum Camaro.

First you notice the style. New domed hood. Aggressive. New scooped lower rocker panels. Very aggressive. New aero-formed rear wing. Outrageous.

Z28 is clean, mean. No stripes. No decals. No nonsense. Just brilliant base-coat/clear-coat on one of the sleekest shapes in automotive history.

Under that domed hood, the Z28 is all business, with a standard 5.0 Liter V8 with Tuned-Port Fuel Injection,

available with a standard 5-speed manual or optional 4-speed automatic. Horsepower is 205 at 4200 RPM. But for the "closest thing to a 'Vette yet," there's the "350" (that's a 5.7 liter, 245 HP engine with Tuned-Port Fuel Injection).

Make no mistake. Z28 is more than sleek style and a big V8. This car has a fun-to-drive quotient that's strictly world-class. Components include P235/55R tires on big 16" rims, fast-ratio power steering, computer-

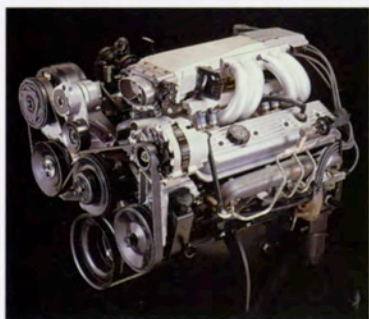


Camaro Z28 Convertible.

selected coil spring rates and heavy-duty front and rear stabilizer bars.

Like all 1991 Camaros, the Z28 features a standard Personalized Automotive Security System (PASS-Key®). Originally created for Corvette, PASS-Key® cut property theft losses for Corvette owners an average of 52% in its first two years. It's the most sophisticated theft-deterrent system in GM history.

The Z28 was always special. Now it's magnificent.

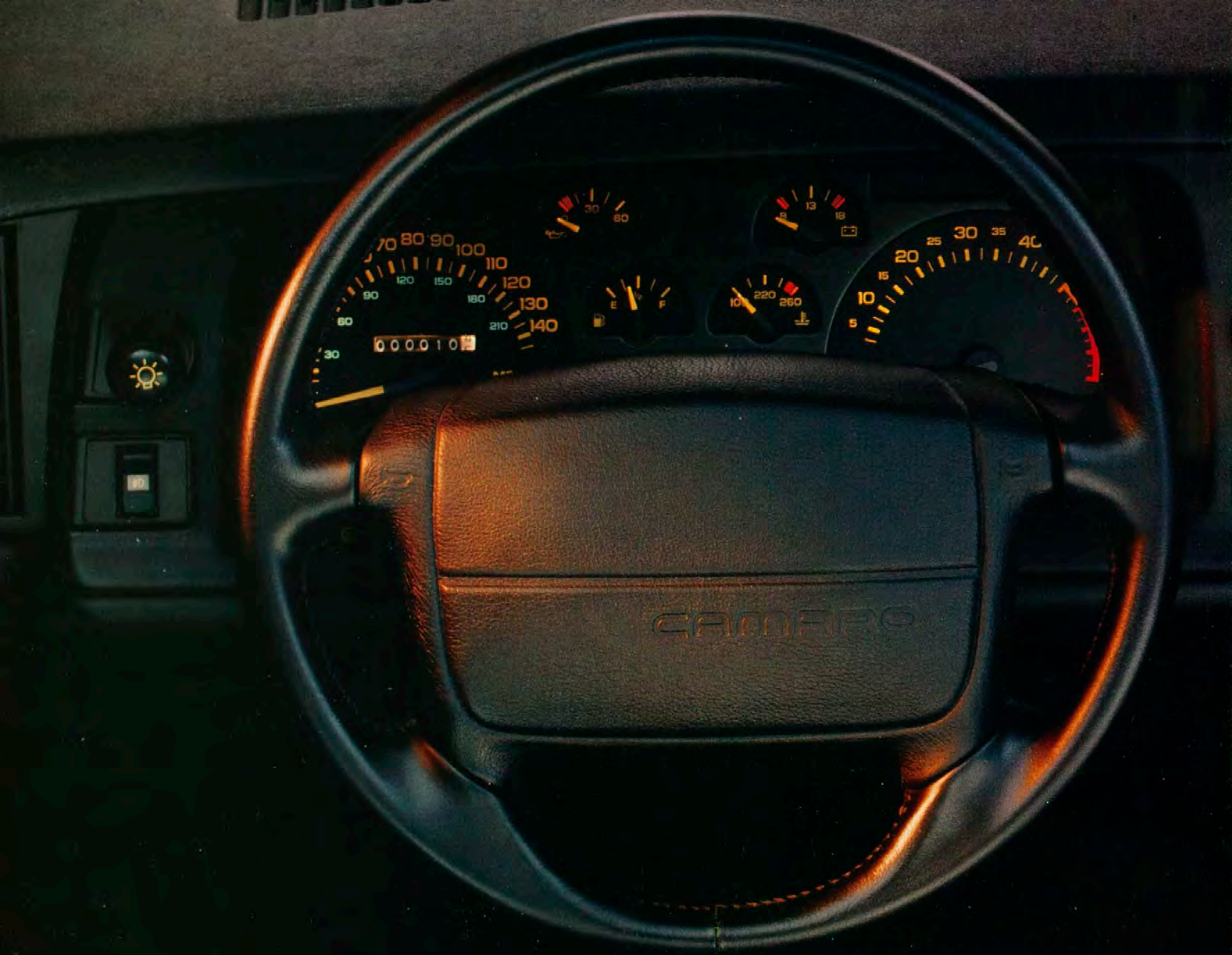


Z28 Coupe is available with a 5.7 Liter V8 with Tuned-Port Fuel Injection. Horsepower is 245 at 4400 RPM.

Z28 Convertible

There is nothing subtle about the Z28 Convertible. Choosing this "Z" gets you the 5.0 Liter V8 with Tuned-Port Fuel Injection, an easy-folding manual cloth top and a fiberglass tonneau cover for a dramatic top-down appearance.

So go ahead. Get the drop on summer. Get the Z28 drop-top.



INSTRUMENT PANEL

Z28 instrument panel features analog instrumentation with tachometer. Other standard features include a driver's-side Supplemental Inflatable Restraint system (air bag) located in the steering wheel hub. Optional Delco/Bose Gold Series AM/FM stereo music system shown.

INTERIORS



*Camaro's standard interior features cloth-and-vinyl trim and high-back front bucket seats with integral head restraints. Includes **Scotchgard™** Fabric Protector on seats and door panels.*



Camaro's ultimate luxury option is the Custom Leather interior. Glove-soft leather bucket seating surfaces add classic style to the classic Chevrolet 2+2. Includes a split-folding rear seat. Available on all models.

*The optional Custom Cloth interior sets an exclusive, sporty tone for 1991 with luxury fabrics and vinyls, adjustable head restraints, a split-folding rear seat and custom-trimmed door panels. Available on all models. Includes **Scotchgard™** Fabric Protector on seats and door panels.*

Camaro for 1991 offers three interior choices: standard cloth-and-vinyl, optional Custom Cloth and optional Custom Leather seating surfaces. Each is sporty, driver-oriented and well-appointed. The degree of luxury is up to you.

All three Camaro interiors are available in any Camaro model.

Standard features of every interior include:

- Reclining front bucket seats and sport-styled center console with storage.
- Full analog instrumentation, including speedometer, tachometer, trip odometer, temperature gage, oil pressure gage and voltmeter.
- Delco AM/FM stereo music system with Extended Range Sound System and digital clock.
- Comfortilt steering wheel, intermittent wipers and tinted glass.
- On coupe models, the rear seat folds forward, creating up to 31 cu. ft. of storage space, accessible through a wide-opening rear hatch.

CAMARO

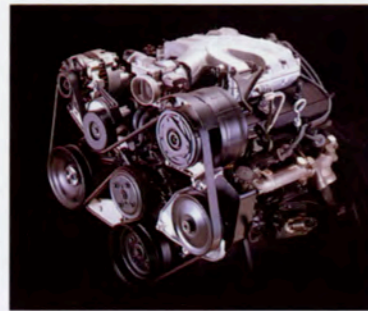
STANDARDS



15" color-keyed cast-aluminum wheels are standard on Camaro RS.



16" cast-aluminum wheels are optional on Camaro RS and standard on Z28.



A 140-HP 3.1 Liter V6 with Multi-Port Fuel Injection is standard on Camaro RS Coupe. Features include high-energy ignition, electronic spark control and a single-belt accessory drive designed to never need adjustment.



Camaro's standard analog gage package includes tachometer, trip odometer, voltmeter, temperature and oil pressure gages.

Every Camaro RS features:

- AM/FM stereo with seek/scan, Extended Range Sound System and digital clock
- Auxiliary lighting
- Base-coat/clear-coat paint
- Bumper to Bumper Plus 3-Year/50,000-Mile Limited Warranty (See page 22 for more information)
- Center console with storage compartment
- Cloth reclining front bucket seats
- Comfortilt steering wheel
- Deep-well luggage area (Coupe only)
- Dual sport mirrors (left-hand remote)
- 15" x 7" cast-aluminum wheels
- Front air dam/lower body moldings
- Halogen headlamps
- Intermittent wipers
- PASS-Key® vehicle security system
- Power front disc/rear drum brakes
- Power steering
- P215/65R-15 steel-belted all-season touring tires
- Rear deck spoiler

- Rear hatch with automatic pull-down (Coupe only)
- **Scotchgard™** Fabric Protector on seats and door panels
- Side-window defoggers
- Special Instrumentation with tachometer
- Supplemental Inflatable Restraint system (air bag, driver's side only. Manual lap/shoulder safety belts for all seating positions.
- Sport Suspension
- Tinted glass, all windows
- Wet-arm wipers.

In addition to or replacing RS features, every Camaro Z28 includes:

- 5.0 Liter V8 with Tuned-Port Fuel Injection
- Special exterior appearance with black-painted headlamp openings, hood power dome, rear wing (except convertible) and specific tail lamps
- Halogen fog lamps
- Limited-slip differential
- Special performance ride and handling suspension
- 16" x 8" lightweight cast-aluminum wheels
- P235/55R-16 all-season touring tires.

Exterior Colors



Arctic White



Bright Red



Light Blue Metallic*



Dark Red Metallic



Dark Teal Metallic*



Medium Gray Metallic*



Black



Ultra Blue Metallic

*Not available on Z28.



AM/FM stereo with seek/scan, Extended Range Sound System and digital clock.



Scotchgard™ Fabric Protector protects seats and door panels in 1991 Camaros. It's a Chevrolet exclusive, for stain resistance and easy cleanup.



The standard Comfortilt steering wheel lets you vary your driving position on long drives, facilitates entry/exit.

DIMENSIONS (in.)

Wheelbase	101.0
Length (overall)	192.6
Width (overall)	72.8
Height (overall)	50.3
Tread-Front	60.0
Tread-Rear	60.9
Cargo Volume (cu. ft.)	31.0*
Fuel Tank Capacity (gals.)	15.5

*With rear seat down. 5.2 cu. ft. in Convertible.

INTERIOR/EXTERIOR COLOR COMBINATIONS

Interior Colors	Black	Lt. Brown	Gray	Red
Standard Cloth	■	■	■	■
Custom Cloth	■	■	■	■
Custom Leather		■	■	■
Exterior Colors	Black	Lt. Brown	Gray	Red
Arctic White	■	■	■	■
Light Blue Metallic*	■		■	
Dark Teal Metallic*	■		■	
Black	■	■	■	■
Bright Red	■	■	■	■
Dark Red Metallic	■	■	■	■
Med. Gray Metallic*	■		■	■
Ultra Blue Metallic	■	■	■	

*Not available on Z28.

POWER TEAMS	Engine Availability			Transmission Availability		
	RS Coupe	RS Conv.	Z28 Coupe	Z28 Conv.	5-spd. Manual	4-spd. Auto.
3.1 Liter V6 w/ MFI	S	NA	NA	NA	S	0
5.0 Liter V8 w/ EFI	0	S	NA	NA	S	0
5.0 Liter V8 w/ TPI	NA	NA	S	S	S	0
5.7 Liter V8 w/ TPI	NA	NA	0	NA	NA	0*

S-Standard, 0-Optional, NA-Not Available, EFI-Electronic Fuel Injection, MFI-Multi-Port Fuel Injection, TPI-Tuned-Port Fuel Injection. *Required option.



CAMARO

OPTIONS

INDIVIDUALLY AVAILABLE OPTIONS

(May be added with any Preferred Equipment Group if not already included)

- 5.0 Liter V8 with Electronic Fuel Injection (RS Coupe only)
- 5.7 Liter V8 with Tuned-Port Fuel Injection (Z28 Coupe only, requires 4-speed automatic transmission, performance axle ratio and P245/50 ZR-16 tires)
- 4-speed automatic transmission
- P235/55 R-16 tires/16" aluminum wheels (standard on Z28 Coupe)
- P245/50 ZR-16 tires (standard on Z28 Convertible, optional on Z28 Coupe)
- Air conditioning (included in all Preferred Equipment Groups)
- Electric rear window defogger (coupes only)
- Engine block heater
- Performance axle ratio (Z28 Coupe only, requires 5-speed manual transmission or 5.7 Liter V8. Also includes four-wheel disc brakes, engine oil cooler and performance exhaust system. Deletes standard fog lamps.)
- Power door locks
- Power hatch release (RS Coupe only)
- Rear window louvers (coupes only)
- Removable roof panels with locks (coupes only)
- Twin electric remote sport mirrors.



The optional Custom Interior trim includes a split-folding rear seat, adding cargo-carrying flexibility.

INTERIOR TRIM

- Custom Cloth interior trim
- Custom Leather seating surfaces.

RADIO EQUIPMENT

- Electronically tuned AM/FM stereo with seek/scan, stereo cassette tape player with search and repeat, Extended Range Sound System and digital clock
- Electronically tuned AM/FM stereo with seek/scan, compact disc player, Extended Range Sound System, Delco-Loc and digital clock.
- Delco/Bose Gold Series music system. Electronically tuned AM/FM stereo with seek/scan, stereo cassette tape player, Extended Range Sound System and digital clock. (Available on coupes only)

Camaro Z28 Coupe shown with the following options: removable roof panels, Custom Leather seating surfaces and electric rear window defogger.

PREFERRED EQUIPMENT GROUPS

The 1991 Camaro features optional Preferred Equipment Groups that help simplify the buying process. Choose the package containing the equipment you desire, then select from the accompanying list of individually available options. Some restrictions apply. See your dealer for details.

RS COUPE/CONVERTIBLE	1	2
Preferred Equipment Group 1		
Air Conditioning	■	■
Body-Side Moldings	■	■
Carpeted Floor Mats, Front and Rear	■	■
Radio: Electronically tuned AM/FM stereo with seek/scan, stereo cassette tape player, Extended Range Sound System and digital clock	■	■
Preferred Equipment Group 2		
Rear Compartment Cover*		■
Mirror with Dual Reading Lamps (Std. Conv.)		■
Power Hatch Release*		■
Power Windows		■
Power Door Locks		■
Electronic Speed Control with Resume Speed		■

Z28 COUPE/CONVERTIBLE	1	2	3
Preferred Equipment Group 1			
Air Conditioning	■	■	■
Body-Side Moldings	■	■	■
Carpeted Floor Mats, Front and Rear	■	■	■
Preferred Equipment Group 2			
Electronic Speed Control with Resume Speed		■	■
Mirror with Dual Reading Lamps (Std. Conv.)		■	■
Power Door Locks		■	■
Power Hatch Release*		■	■
Power Windows		■	■
Rear Compartment Cover*		■	■
Radio: Electronically tuned AM/FM stereo with seek/scan, stereo cassette tape player, Extended Range Sound System and digital clock		■	■
Preferred Equipment Group 3			
Twin Electric Remote Mirrors			■
Power Seat (driver's side)			■

*NA on Convertible.



Electronically tuned AM/FM stereo with seek/scan, stereo cassette tape player with search and repeat, Extended Range Sound System and digital clock.



The optional Delco AM/FM stereo music system with compact disc player adds a new dimension to auto sound. Includes Extended Range Sound System and Delco-Loc, a security system designed to render the radio useless if it is removed from the car without the pre-programmed security code.



Camaro's Delco/Bose Gold Series music system is one of the finest stereo systems available in any automobile. The Delco/Bose speakers are specifically tuned to Camaro's interior environment for sensational custom-equalized sound. Features include AM/FM stereo and auto-reverse cassette tape. Available on coupes only.

ADDITIONAL INFORMATION

SAFETY FEATURES

Occupant Protection

- Supplemental Inflatable Restraint system, driver's side only, with manual lap/shoulder safety belts for the driver and right front passenger
- Manual lap/shoulder safety belts, out-board rear seat positions
- Energy-absorbing steering column
- Energy-absorbing instrument panel
- Energy-absorbing front seat-back tops
- Interlocking door latches
- Side-guard door beams
- Passenger-guard inside door lock handles
- Inertia-locking, folding front seat-backs
- Head restraints, driver and right front passenger (adjustable or integral)
- Breakaway inside rearview mirror
- Security door locks and door retention components.

Accident Avoidance

- Side marker lights and reflectors
- Parking lamps that illuminate with headlamps
- Four-way hazard warning flasher
- Back-up lights
- Center high-mounted stop lamp
- Directional signal control with lane-change feature
- Windshield defroster, washer and multi-speed wipers
- Inside rearview mirror
- Outside left and right rearview mirrors
- Brake system with dual master cylinder and warning light
- Starter safety switch
- Dual-action hood latch
- Low-glare finish on inside windshield moldings, wiper arms and blades, metallic steering wheel surfaces
- Illuminated heater and defroster controls
- Tires with built-in tread wear indicators.

Theft Deterrence

- Audible reminder for ignition key removal
- Theft-deterrent steering column lock
- Visible vehicle identification number
- Marked body parts
- PASS-Key[®] Automotive Security system.

A Word About This Catalog

We have tried to make this catalog as comprehensive and factual as possible. We reserve the right, however, to make changes at any time, without notice, in price, colors, materials, equipment, specifications, models and availability. Since some information may have been updated since the time of printing, please check with your Chevrolet dealer for complete details.

A Word About Engines

Chevrolets are equipped with engines produced by different operating units of GM, its subsidiaries or suppliers to GM worldwide.

A Word About Assembly of Chevrolets

Chevrolets are assembled by different operating units of General Motors, its subsidiaries or suppliers to GM worldwide. Chevrolets incorporate thousands of components produced by different operating units of GM, its subsidiaries or suppliers to GM worldwide. We sometimes find it necessary to produce Chevrolets with different or differently sourced components than originally scheduled. All such components have been approved for use in Chevrolets and will provide the quality performance associated with the Chevrolet name. Since some options may be unavailable when your vehicle is assembled, we suggest that you verify that your vehicle includes the equipment you ordered, or if there are changes, that they are acceptable to you.

A Word About Updated Service Information

Chevrolet regularly sends its dealers useful service

bulletins about Chevrolet products. Chevrolet monitors product performance in the field. We then prepare bulletins for servicing our products better. Now you can get these bulletins, too. Ask your dealer. To get ordering information, call toll free 1-800-551-4123.

A Word About Corrosion Protection

Chevrolets are designed and built to resist corrosion. All body sheet metal components are warranted against rust-through corrosion for 6 years/100,000 miles. Application of additional rust-inhibiting materials is not required under the corrosion coverage.

At your Chevrolet dealer, financing or leasing your new Camaro can be as easy as saying GMAC.



Let's get it together
... buckle up.

Camaro, Chevrolet, the Chevrolet emblem, GM and the GM emblem are registered trademarks and Chevy, Z28 and The Heartbeat of America are trademarks of the General Motors Corp. PASS-Key is a registered trademark of the Delco Electronics Corporation.

© 1990 General Motors Corporation.
All rights reserved.

LITHO IN U.S.A. 5024 FEBRUARY 1990



GM's 3-year/50,000-mile limited warranty covers repairs for all 1991 Camaros, including labor and parts, to correct any defects in material or workmanship occurring during the warranty period. After the first year or 12,000 miles there is a \$100 deductible per repair visit. Warranty features include air conditioning repair, towing, no-cost warranty transfer, 6-year/100,000-mile body sheet metal rust-through protection and 5-year/50,000-mile emission controls system coverage. Items not covered include tires (which are covered by their manufacturer) and normal maintenance. See your Chevrolet dealer for terms of this limited warranty.





RS4