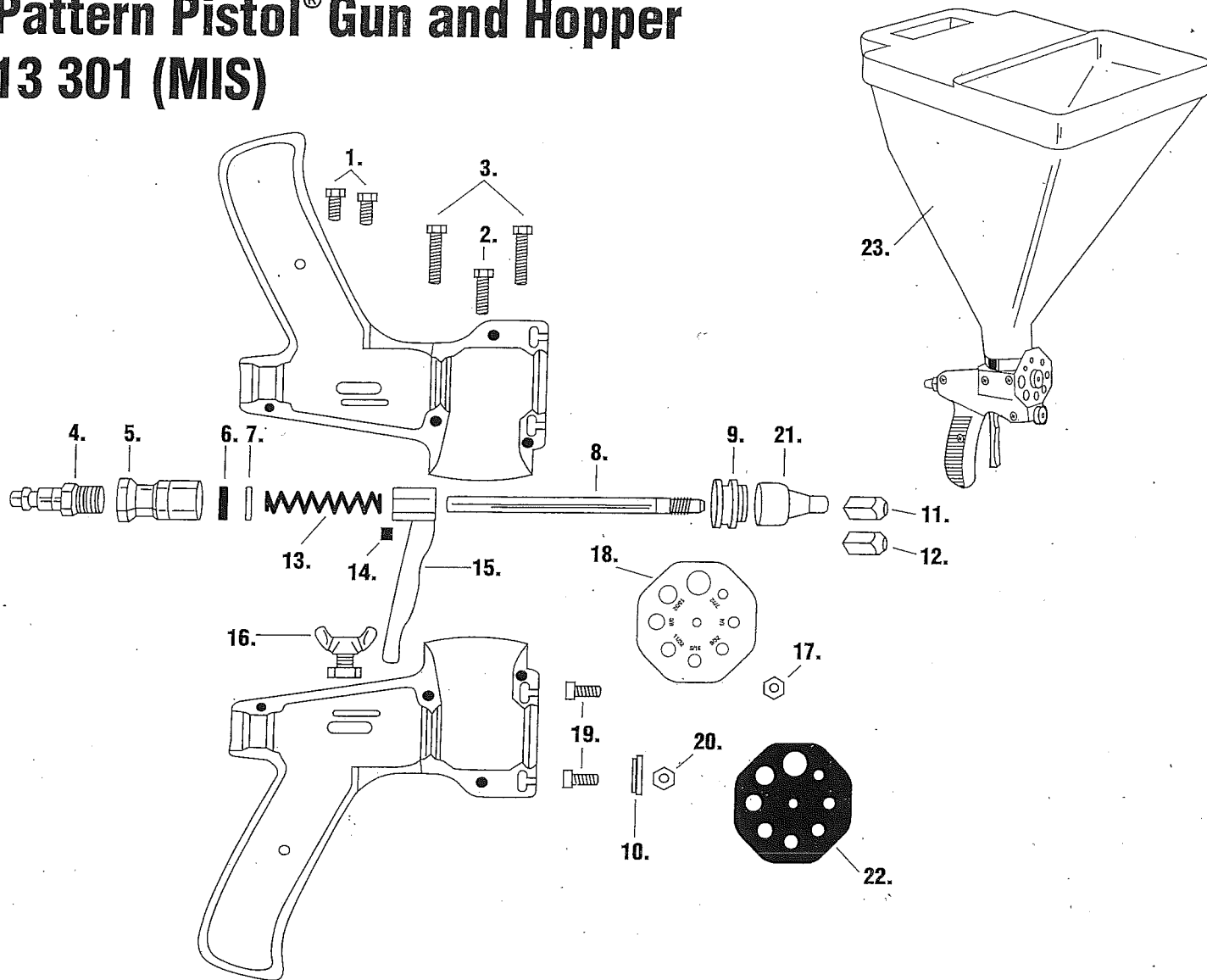


# Pattern Pistol® Gun and Hopper 13 301 (MIS)



## REPAIR KIT 13 307 (All above parts except Hopper & Gun Case)

Includes everything needed to maintain the Pattern Pistol® Gun: all handle screws, trigger, trigger set screw, trigger spring, front bushing, neoprene seal, orifice lock nut, plate, tension screw, tension nut, tension clamp, plate gasket, 1/8" and 3/32" air orifice.

Part Name	Part Number	Part Name	Part Number
1. Screws		13. Trigger Spring	
2. Screws		14. Trigger Set Screw 8-32 x 3/8 Hex Set Screw	
3. Screws		15. Trigger	13 310
4. Quick Disconnect		16. Stop Lock	
5. Rear Bushing		17. Orifice Hex Nut	
6. Seal		18. Orifice Plate	
7. Washer		19. Orifice Tension Screw	
8. Air Stem		20. Orifice Tension Nut	
9. Front Bushing		21. Neoprene Seal	13 309
10. Orifice Tension Clamp		22. Orifice Plate Gasket	13 309
11. 1/8" Air Orifice		23. Hopper	13 302
12. 3/32" Air Orifice			

## SPRAYING GLITTER

Although you can spray glitter with your Goldblatt® Gun and Hopper, a special glitter gun is recommended to prevent material waste. Also, a separate glitter gun can be ready for immediate application while the textured surface is still tacky.

If gun and hopper are used to apply glitter, they must be thoroughly dry. Use hose and compressor to dry out gun and hopper and apply glitter at 15 PSI to acoustical materials and 25 PSI to cement/stucco surfaces.

## SELECTING A PATTERN

An infinite number of different patterns can be obtained by making the following adjustments:

**Size of Orifice Opening** – The circular orifice disc on the gun has five opening sizes: 7/32", 1/4", 5/16", 3/8", 7/16". To change opening: loosen both hex nuts (use small socket tool supplied with gun); pull trigger at least 1/8"; rotate disc to desired opening; tighten hex nuts finger-tight with tool supplied (do not use pliers). Orifice opening is determined by size of aggregate.

**Air Nozzle Tip** – Remove orifice disc and gasket. Replace and attach desired size nozzle tip. Gun is shipped with 1/8" tip installed and the 3/32" tip is included as an accessory.

**Trigger Setting** – The amount of pattern build-up can be varied by how far the trigger can be pulled back. Use wingnut to lock in desired pattern. It is not necessary to disconnect the air hose to refill the hopper, releasing the trigger stops material flow.

**Air Pressure** – Depending upon the mix and type of aggregate, adjust compressor's PSI higher for acoustic ceiling texture and fine wall sprays. Adjust lower for splatter and/or Spanish textures.

## SPRAYING INSTRUCTIONS

**Simulate Acoustics** – Loosen the hex nut on the relief valve (on the compressor), screw the relief knob all the way down and re-tighten the hex nut. Use the third largest opening on the orifice disc.

**Sand Finish** – Adjust the orifice disc to the smallest or next larger opening. The relief valve knob (on the compressor) should be all the way down.

**Orange Peel Texture** – Adjust the orifice disc to the smallest opening. The relief valve knob should be all the way down. Set the trigger stop so the air nozzle tip is 1/16" from the orifice disc.

**Splatter Texture** – Loosen the hex nut on the relief valve and reduce pressure to 4 to 6 lbs. Set the orifice disc to the third largest opening. The size of the texture can be changed by varying the air pressure and/or orifice opening.

**Spanish Texture** – Trowel the splatter surface in all directions. Avoid up and down or back and forth motions. Always trowel in circular directions.

## MAINTENANCE

**Keep it Clean** – For maximum life and efficiency, clean both gun and hopper with clean water.

**Oiling Instructions** – After every use (and after gun has been cleaned) apply a few drops of oil on the air stem and its spring (access through slot behind trigger). Then pull trigger back and apply a few drops of oil on the front part of the air stem.

On compressor, fill oil assembly between 1/4 to <sup>1 1/2</sup> full of 30 weight oil. Put 3 drops of 30 weight oil in each of the two oiler cups on the compressor. When in continuous use re-oil once a week.

**Be Sure Oil Level is Maintained** – Change oil after first 5 hours of operation. Thereafter change oil every 25 hours of operation. Remove oil drain plug and drain oil while engine is warm. Replace drain plug. Remove oil filler plug or cap and re-fill with new oil of proper grade. Replace oil filler plug or cap.

**Gun Assembly** – Please refer to the illustrations on next page of the Goldblatt® Gun. Use these cutaway drawings as your guide for reassembling. Note: Use part name and number when ordering parts.

**Important** – When re-assembling the gun, be sure to adjust trigger so the front tip of the air nozzle protrudes 1/8" past the nose piece when the trigger is in the full position. If the front of the nozzle does not bear against the orifice gasket, the gun will leak at this point. When reassembling the gun, be sure to use a sealant between the housing halves to prevent leaking and a sticking trigger.

**FEATURES & BENEFITS**  
of  
**PATTERN PISTOL® with COMPRESSOR**  
**PACE-SETTER® GUN & HOPPER with COMPRESSOR**

**I. PATTERN PISTOL® WITH COMPRESSOR (13 300)**

**PACE-SETTER® GUN & HOPPER WITH COMPRESSOR (15 300)**

- A. Units come complete.
  - 1. Gun & Hopper, compressor, electric motor, 50' of air hose, 25' power cord, 2-wheel dolly and instructions included.
  - 2. No costly extra parts to buy.
  - 3. No hidden costs for consumer to pay.
- B. Units have powerful 1 HP motor and 6.2 cfm compressor.
  - 1. Required air pressure is easily supplied by the compressor.
  - 2. Unit can perform variety of jobs at a faster pace.
- C. Units run on 110V, 60 Hz, 15 amp breaker.
  - 1. Allows unit to be used on residential as well as commercial jobs.
  - 2. No special wiring requirements. Just plug it into a 110V outlet.
- D. Units come with air gauge and relief valve.
  - 1. Allows contractor to shoot a wide variety of patterns.
  - 2. Job performance becomes more flexible.
- E. Units are built with multiple orifice openings and adjustments.
  - 1. Orifices are easy to set.
  - 2. Orifice openings are able to shoot wide range of patterns.
- F. Units may be easily maneuvered by one person.
  - 1. This is ideal for texturing one room or an entire house.
  - 2. Cuts down on lost time.

**II. PATTERN PISTOL® GUN & HOPPER (13 301) & PACE-SETTER® GUN & HOPPER (15 305)**

- A. Pattern Pistol® Gun & Hopper
  - 1. Cast aluminum gun with plastic hopper.
    - a. Lightweight yet strong for long life.
    - b. Easy to use and will not rust.
    - c. Low maintenance costs.
  - 2. Heavy-duty plastic hopper.
    - a. Hopper will not dent or break, can't rust.
    - b. Lightweight, well balanced and easy to use.
    - c. No need to replace hopper.
  - 3. Free 45° adaptor for ceilings.
    - a. Allows operator to spray ceiling while holding hopper upright.
    - b. Allows hopper to completely empty.
    - c. Less fillings per job.
  - 4. Trigger Lock
    - a. Eliminates hand fatigue and constant finger pressure.
    - b. Allows operator more freedom of movement.
    - c. Save end users time and gives a consistent spray pattern.

5. Redesigned Orifice Plate & Gasket
  - a. New design with sizes stamped in plate.
  - b. Easier to turn plate.
  - c. Solid one piece gasket, so no more lost or damaged gaskets.
  - d. Easy to change air nozzles.
  - e. Less down time.
  
- B. Pace-Setter® Gun & Hopper
  1. Gun made of high impact plastic.
    - a. Lightweight, 2-gallon hopper will not rust or dent — easy to clean.
    - b. Very easy to handle with less fatigue on operator.
    - c. Long lasting — designed for continuous use.
  
  2. Hopper has built-in angle design.
    - a. No adaptor needed.
    - b. Perfect for texturing ceilings or walls.
  
  3. Convenient parts storage compartment in gun handle.
    - a. No lost accessories and no time lost looking for accessories.
    - b. All parts interchangeable with Original Gun & Hopper.
    - c. No costly down time waiting on parts.

# HOW TO ASSEMBLE

## a

# PATTERN PISTOL®

### I. RECEIVING UNIT

- A. Check box for damage.
- B. Carefully remove unit from box:
  - 1. Cut tape — be careful not to damage unit along top of box.
  - 2. Remove hopper, hose and gun.
  - 3. Lay box down on back, carefully pull unit from box .
  - 4. Check unit for damage.

### II. PARTS

- A. The following parts are included in the box:
  - 1. 1—Compressor and Dolly; 1 HP Motor with 25' Power Cord
  - 2. 1—50' 1/2" Air Hose
  - 3. 1—Gun
  - 4. 1—Hopper
  - 5. 1—Female Quick Disconnect\*
  - 6. 2—Hopper Clamps (1 Hopper Clamp with 15 300)\*
  - 7. 1—45° Adaptor (comes with 13 300 only)
  - 8. 1—1/2"x1/2"x3/8" Pipe "T"\*
  - 9. 1—1/2" Close Pipe Nipple\*
  - 10. 1—Brass Nipple\*
  - 11. 1—Relief Valve\*

\*Denotes items found in plastic bag.

### III. TOOLS REQUIRED FOR ASSEMBLY

- A. The following tools are needed for assembly of the Pattern Pistol®.
  - 1. Blade screwdriver
  - 2. Pipe wrench
  - 3. Adjustable wrench
  - 4. Teflon tape

### IV. ASSEMBLY OF RELIEF VALVE & HOSE

- A. Assembling relief valve and hose:
  - 1. Remove plastic plug from compressor.
  - 2. Place teflon tape on 1/2" Close nipple; Thread into compressor — finger tight.
  - 3. Place teflon tape on open end of Close Nipple and thread Pipe "T" on. Tighten with pipe wrench until both pieces are tight.
  - 4. Remove protective cap from relief valve and place teflon tape on threads and place into Pipe "T". Tighten with adjustable wrench.
  - 5. Place teflon tape on pipe thread portion of Brass Nipple.
  - 6. Thread into open end of Pipe "T". Tighten with adjustable wrench.
  - 7. Thread swivel end of air hose to Brass Nipple. Tighten with adjustable wrench. (No need to use teflon tape because this is a compression fitting.)
  - 8. On loose end of hose, wrap threads with teflon tape and thread Female Quick Disconnect on to hose fitting. Use pipe wrench and adjustable wrench.

## **V. ASSEMBLY OF GUN & HOPPER**

### **A. Assembling gun and hopper:**

1. Place female end of 45° adaptor over open throat of gun.
2. Place clamp over connection and tighten. (The open male end of the 45° adaptor should be facing forward, away from the operator.)
3. Place second clamp over adaptor.
4. Place hopper on adaptor. (Handle of hopper should be to rear of gun.)
5. Tighten clamp around connection.
6. If assembling a 15 305, place clamp over neck of gun and place hopper directly on gun and tighten clamp.
7. Attach quick disconnect air hose to rear of gun.

# **CONTROLS & ADJUSTMENTS**

## **of**

## **Pattern Pistol®**

### **I. RELIEF VALVE**

- A. Relief Valve is located under pressure gauge.
- B. Increase pressure by turning valve down (clockwise). When desired pressure is achieved use locking nut to hold that pressure.
- C. Decrease pressure by turning valve up (counter-clockwise).

**CAUTION:** DO NOT allow center stud to come out of the housing. This will allow internal part to be "blown out."

- D. Adjustments may be made while the machine is running.

### **II. TRIGGER STOP & LOCK**

- A. Trigger stop is located on the left side of the gun allowing the operator to control the air stem travel.
- B. To set trigger stop:
  - 1. Select desired trigger position.
  - 2. Bring stop lock forward until it makes contact with trigger.
  - 3. Tighten wing nut.
  - 4. This allows operator to return to same position each time.
- C. To set trigger lock:
  - 1. Pull trigger back all the way, then push to the left to lock in position.
  - 2. Eliminates constant finger pressure, reduces hand fatigue and gives a consistent spray pattern.

### **III. AIR NOZZLES**

- A. Gun comes with two sizes of air nozzle tips.
  - 1. 1/8" nozzle tip in gun.
  - 2. 3/32" nozzle tip wired to orifice plate.
- B. 1/8" nozzle tip should be used for acoustic ceiling spray and splatter/knockdown textures.
- C. 3/32" nozzle tip should be used for orange peel and fog textures. This nozzle tip will increase pressure about 8-12 lbs.
- D. To remove or replace nozzle tip:
  - 1. Rotate the orifice plate so the largest opening is on the bottom.
  - 2. Unthread nozzle tip with socket tool and replace with desired nozzle tip.

### **IV. ORIFICE PLATE**

- A. Five different openings on orifice plate.
- B. To spray heavier textures, such as splatter/knockdown and acoustic ceiling spray, use the larger openings.

- C. To spray lighter textures, such as orange peel and fog, use the smaller openings.
- D. To change orifice opening:
  1. Loosen nut and clamp — DO NOT REMOVE.
  2. Pull trigger back.
  3. Rotate disc to desired opening.
  4. Tighten nut and clamp.