

First detection of fast radio bursts between 400 and 800 MHz by CHIME/FRB

CHIME/FRB Collaboration

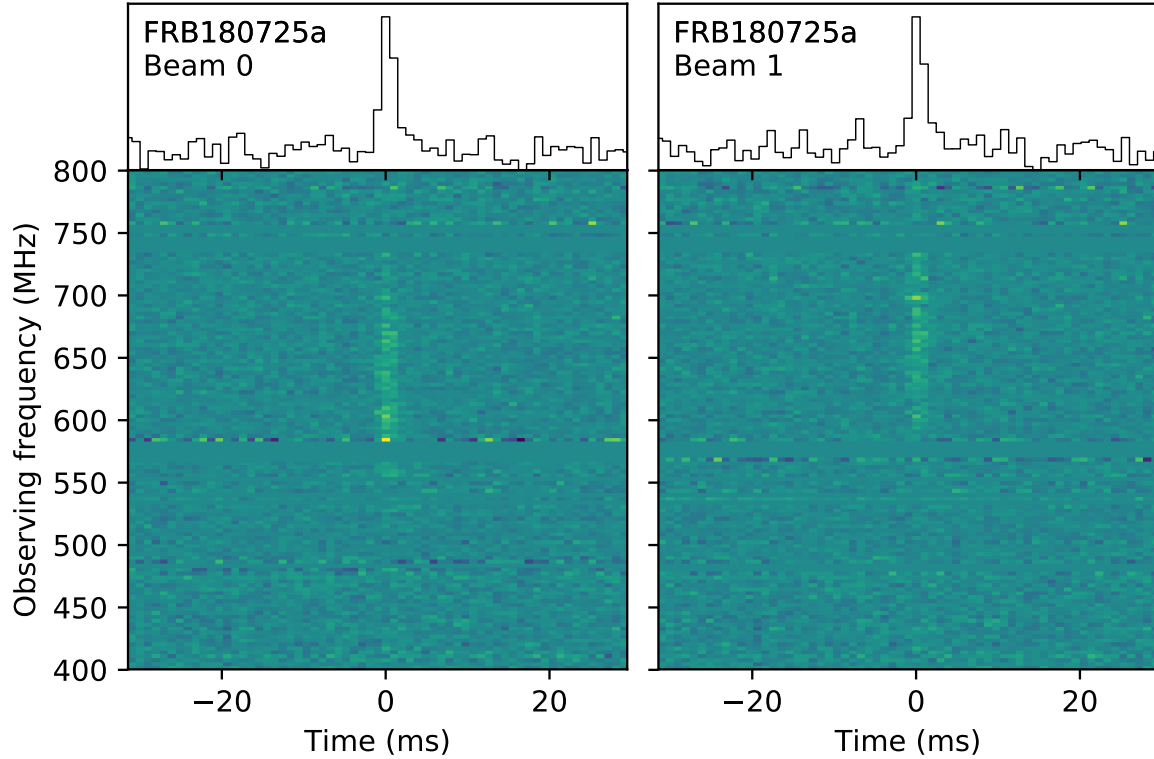


Figure 1: Dynamic spectrum plot after de-dispersion to $DM = 716.6 \text{ pc cm}^{-3}$. The time is relative to the topocentric (at 400 MHz) burst peak on 2018 July 25 at 17:59:43.115 UTC. Intensity data for the two beams in which FRB 180725a was detected are shown. These beams are approximately 0.5° wide and circular beams were at RA, Dec = (06:13:54.7, +67:04:00.1) and RA, Dec = (06:12:53.1, +67:03:59.1; J2000). Some frequency channels with terrestrial radio frequency interference have been zero-weighted.