

## Are you ready?

### Prepare your homes to minimise damage

- Clean gutters and downpipes
- Secure loose items around your property and garden
- Trim trees and remove any overhanging branches (vegetation protection laws may apply, check with Council first)
- Install metal screens or shutters on all windows
- Ensure LPG cylinder relief valves point away from the house
- If you have a water system, pumps or generators make sure they are working and ready in case of fire
- If a storm or hail warning, shelter vehicles safely or cover with a heavy blanket. Park away from trees, powerlines and waterways

### Prepare a family emergency plan

- Prepare an emergency kit
- Identify a safe place to shelter in a storm or to evacuate to in a bushfire and decide how you will look after your pets
- In a bushfire situation, decide whether to go early or stay and defend
- Compile a list of emergency phone numbers

### Emergency Kit Checklist

#### Have you got:

- Torch with spare batteries?
- Battery-operated radio with spare batteries?
- Mobile phone charger and batteries/power bank?
- First aid kit?  
(include any prescribed/essential medications)
- Food and Water?  
(non-perishable food & bottled water, pet or baby food)
- Toiletries  
(Toothbrush/paste, soap/shampoo,  
personal hygiene items)
- Back up copy of important documents – paper or on USB  
(insurances, ID, birth/marriage cert's, photos, contacts)
- Any special items required for seniors, children and pets

Put enough items for 3 days in a spare backpack, sturdy container or waterproof box.

## Emergency Contacts - Karragarra Island

CALL ENQUIRY	CONTACT
Life-Threatening Emergencies or Report a Fire	Triple Zero (000) for Police, Fire or Ambulance services
Police Service If a crime is happening now, call Triple Zero (000)	If not urgent, call Policelink 131 444
Fire Service Call Triple Zero (000)	Call Triple Zero (000)
Current bushfires, fire bans and restrictions	<a href="http://www.ruralfire.qld.gov.au">www.ruralfire.qld.gov.au</a>
Ambulance Service Health & Hospital information	13 12 33 (QLD Ambulance) 13 43 25 84 (13 HEALTH)
Damaged Roof, Flood or Storm Damage call SES	State Emergency Service (SES) 132 500
Council related Emergencies (i.e. sewer, water, trees down)	(07) 3829 8999 (24 hours)
Fallen Powerlines or Power Outages	13 19 62 or <a href="http://www.energex.com.au">www.energex.com.au</a> to find out more about emergency outages and restoration of power
Telecommunication Problems	Telstra – 132 203 or visit <a href="http://outages.telstra.com">outages.telstra.com</a> Optus – 133 937 or visit <a href="http://www.optus.com.au/about/network">www.optus.com.au/about/network</a> Vodafone – 1300 650 410 or visit <a href="http://www.vodafone.com.au/network">www.vodafone.com.au/network</a>
School Closures	Visit <a href="https://closures.det.qld.gov.au/">https://closures.det.qld.gov.au/</a>
Road and Traffic Conditions	Call 13 19 40 or visit <a href="https://qldtraffic.qld.gov.au/">https://qldtraffic.qld.gov.au/</a>
Emergency Housing, Support and Financial Assistance	Community Recovery Hotline: 1800 173 349 or 13 74 68 (13 QGOV)

### For weather updates and to tune into warnings:

- Listen to local radio: 📻 ABC 612 AM
- Access Disaster Management Plans on Redland City Council's site:  
🌐 [disaster.redland.qld.gov.au](http://disaster.redland.qld.gov.au)
- Follow rolling updates on the Redland City Council news site:  
🌐 [news.redland.qld.gov.au](http://news.redland.qld.gov.au)
- Follow updates from Redland City Council's social media:  
🐦 [twitter.com/RedlandCouncil](https://twitter.com/RedlandCouncil)  
📘 [www.facebook.com/RedlandCouncil](https://www.facebook.com/RedlandCouncil)
- Weather and warning updates – Bureau of Meteorology:  
🌐 [www.bom.gov.au/qld/](http://www.bom.gov.au/qld/)
- Verbal contact (door knocking, public announcements etc.) through Qld Police, Qld Fire & Emergency Services and Qld Ambulance Service.

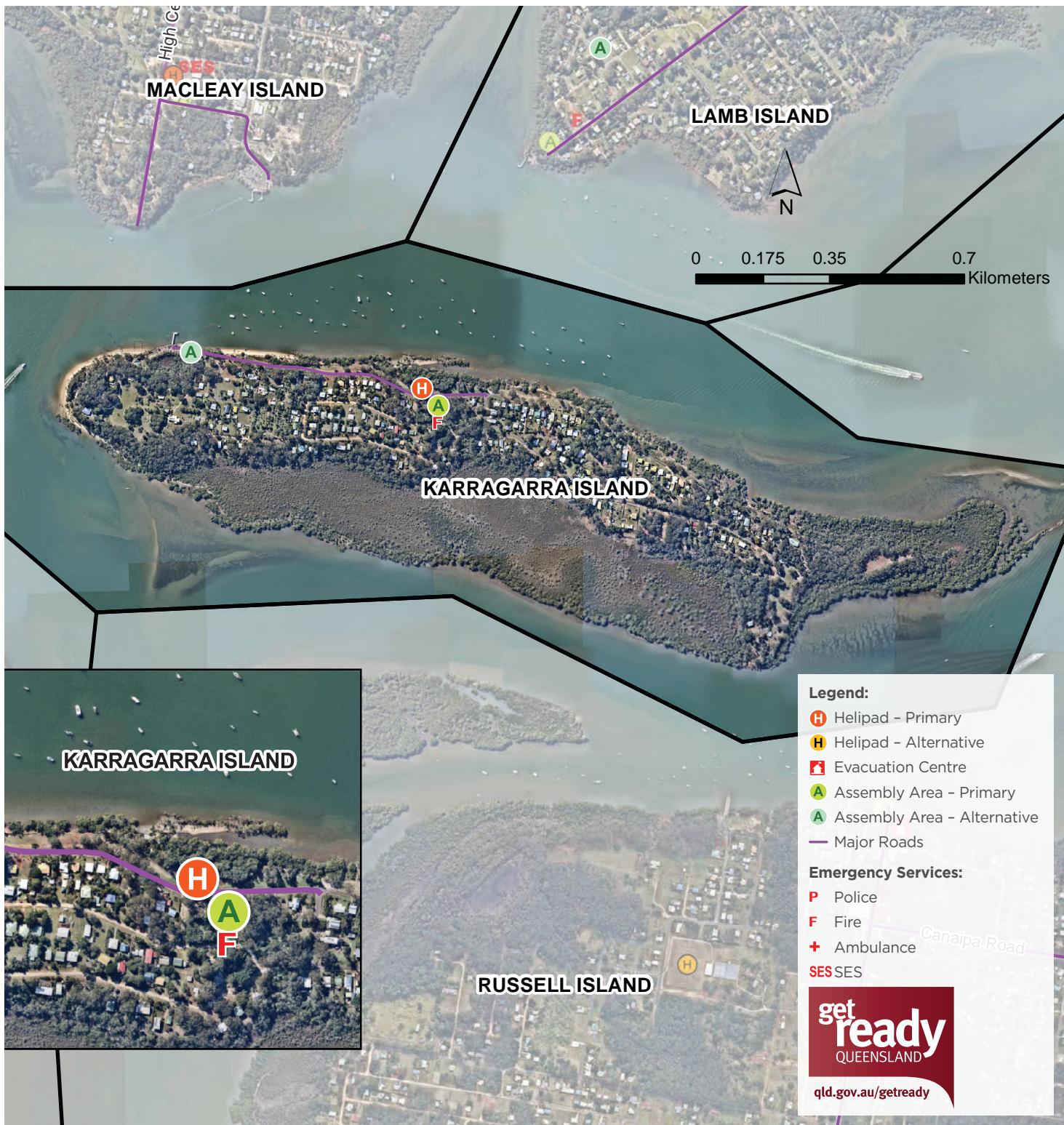
📞 07 3829 8999 | 📧 [emergency@redland.qld.gov.au](mailto:emergency@redland.qld.gov.au)  
🌐 [disaster.redland.qld.gov.au](http://disaster.redland.qld.gov.au)



## DISASTER MANAGEMENT PLAN Karragarra Island







## If required to Evacuate

The first preference is for people to ‘shelter-in-place’ – and stay where you are. Evacuate only if sheltering in place is riskier than leaving.

If you need to evacuate, seek shelter with family or friends. If these options are not available, Redland City Council may establish crisis accommodation in Evacuation Centres or other short term accommodation.

### Evacuation Centres will be opened as required.

For information relating to current Evacuations, please refer to information sources listed overleaf, or contact Redland City Council on 3829 8999.

### Assembly Point

Rural Fire Brigade Station  
11 Noyes Road  
Ph: 3829 8999

## Helicopter Landing Points

Helipad opposite the Rural Fire Brigade Station  
The Esplanade, Karragarra Island

## Evacuation Routes

When evacuating from your home, your chosen evacuation route should always be the most direct and safest route available, be aware of possible localised flooding.

### REMEMBER: If it’s flooded, forget it!

For possible evacuation routes, refer to the map.

## Transport

### Barge and Ferry Launch Sites:

- **Barge and Ferry Terminal (North)** The Esplanade  
Note: The Sandy beaches on the northern coast could be used if the ferry terminal is unavailable

**Bay Island Transit System** – 07 3409 1145

**Stradbroke Ferries** – 07 3488 5300