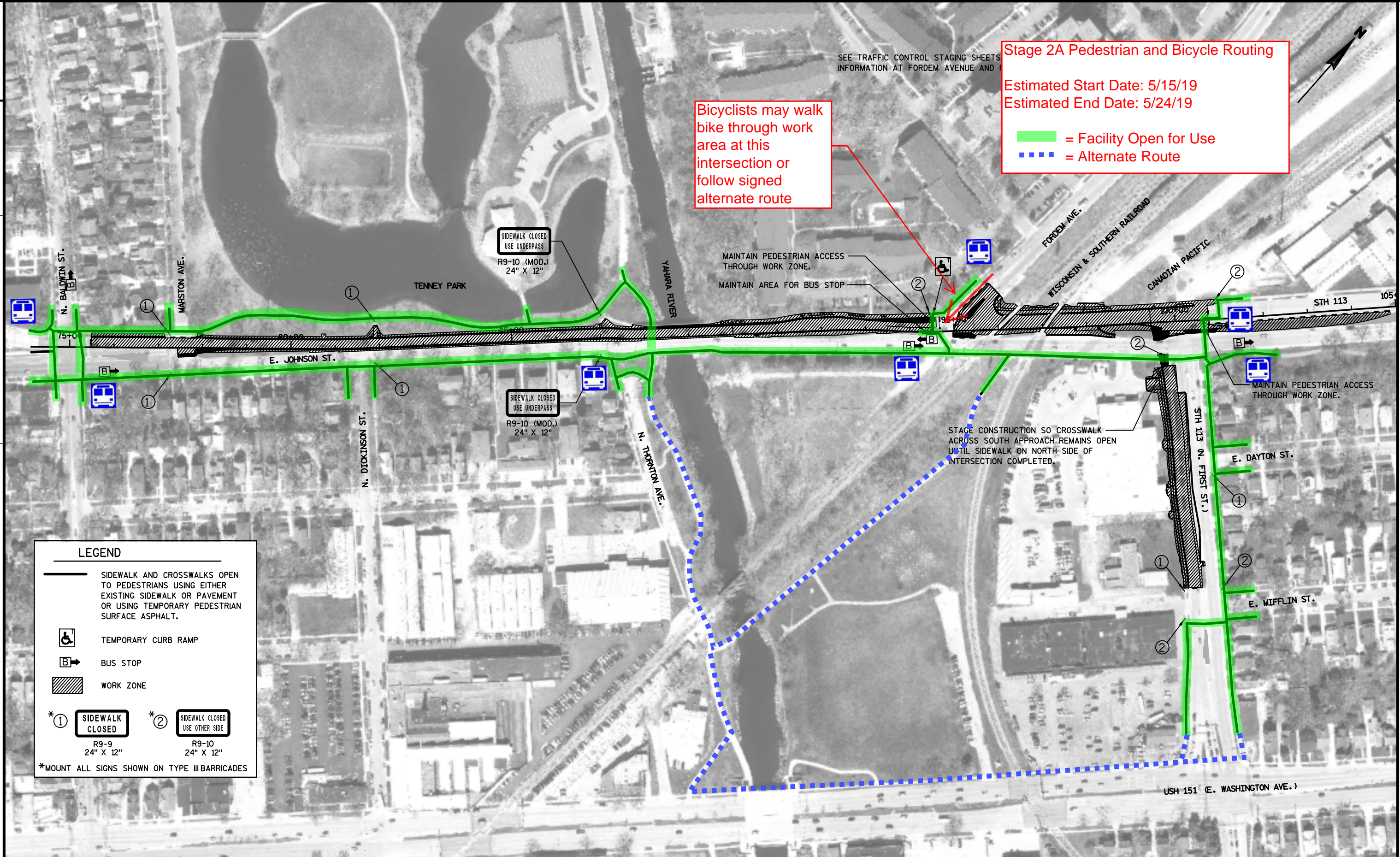


Stage 2A Pedestrian and Bicycle Routing
 Estimated Start Date: 5/15/19
 Estimated End Date: 5/24/19

█ = Facility Open for Use
- - - = Alternate Route

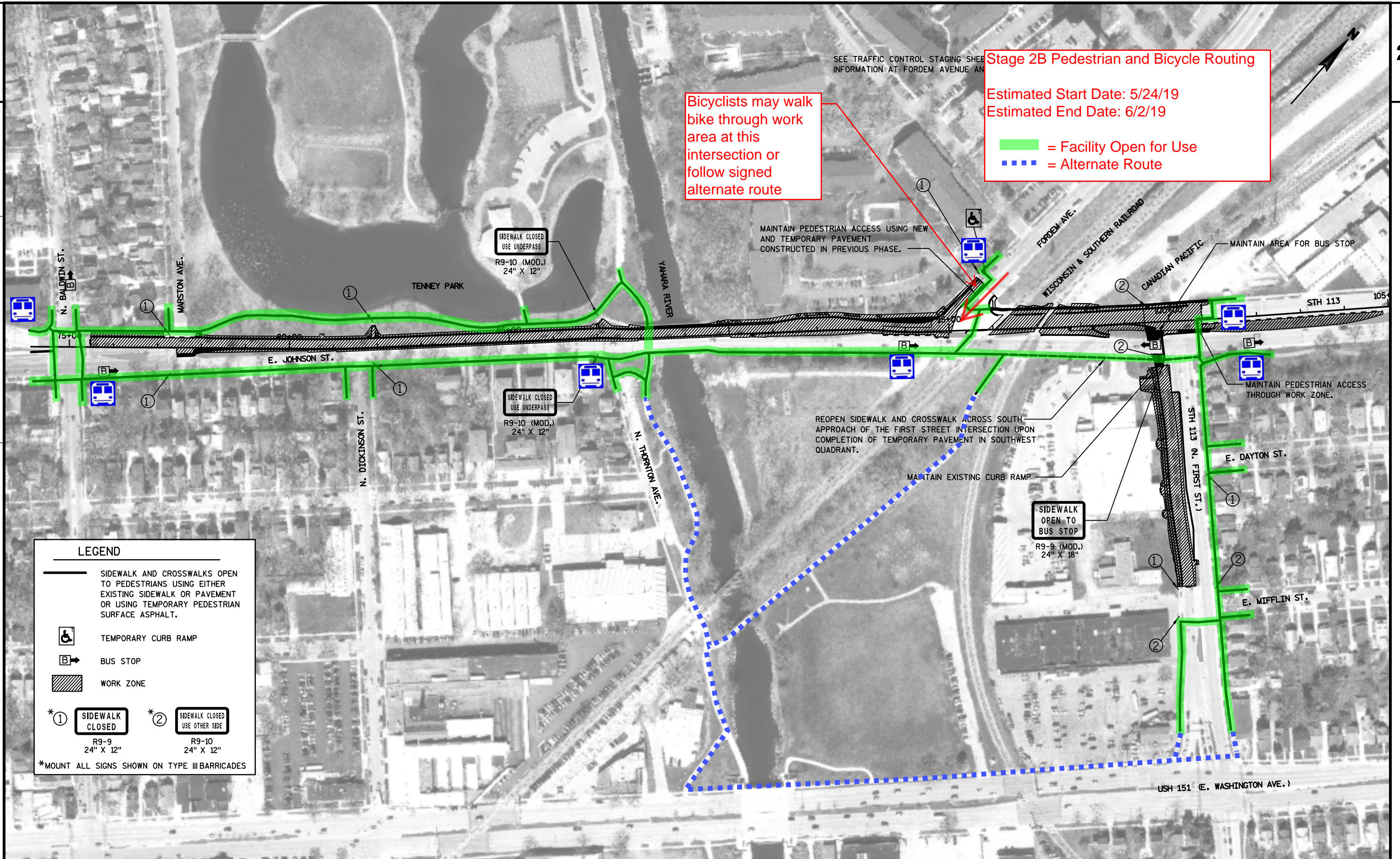
Bicyclists may walk bike through work area at this intersection or follow signed alternate route



LEGEND

- SIDEWALK AND CROSSWALKS OPEN TO PEDESTRIANS USING EITHER EXISTING SIDEWALK OR PAVEMENT OR USING TEMPORARY PEDESTRIAN SURFACE ASPHALT.
- TEMPORARY CURB RAMP
- BUS STOP
- WORK ZONE
- SIDEWALK CLOSED**
R9-9
24" X 12"
- SIDEWALK CLOSED**
USE OTHER SIDE
R9-10
24" X 12"

*MOUNT ALL SIGNS SHOWN ON TYPE III BARRICADES



Stage 2B Pedestrian and Bicycle Routing
 Estimated Start Date: 5/24/19
 Estimated End Date: 6/2/19

— = Facility Open for Use
- - - = Alternate Route

Bicyclists may walk bike through work area at this intersection or follow signed alternate route

LEGEND

- SIDEWALK AND CROSSWALKS OPEN TO PEDESTRIANS USING EITHER EXISTING SIDEWALK OR PAVEMENT OR USING TEMPORARY PEDESTRIAN SURFACE ASPHALT.
- TEMPORARY CURB RAMP
- BUS STOP
- WORK ZONE
- SIDEWALK CLOSED**
R9-9 (MOD.) 24" X 12"
- SIDEWALK CLOSED**
USE OTHER SIDE
R9-10 (MOD.) 24" X 12"

*MOUNT ALL SIGNS SHOWN ON TYPE III BARRICADES