

LA TROBE: Renamed Latrobe.

LACHLAN: A small farming district 6 Km. south of New Norfolk. It is on the Lachlan Road, which runs beside a river of the same name. Sir John Franklin, in 1837, founded the settlement, and used the christian name of Governor Macquarie for the township.

LACKRANA: A small rural settlement on Flinders Island. It is 10 Km. due east of Whitemark, over the Darling Range. A district noted for its dairy produce, it is also the centre of the Lackrana Wildlife Sanctuary.

LADY BARRON: The main southern town on Flinders Island, 24 Km. south of Whitemark. Situated in Adelaide Bay, it was named in honour of the wife of a Governor of Tasmania Sir Harry Barron. Places with names, which are very similar often, created confusion.

LADY BAY: A small bay on the southern end of D'Entrecasteaux Channel, 6 Km. east of Southport. It is almost deserted now except for a few holiday shacks. It was once an important port for the timber industry but there is very little of the wharf today. It has also been known as Lady's Bay.

LADY NELSON CREEK: A small creek on the southern side of Dilston, it joins with Coldwater Creek and becomes a tributary of the Tamar River. The creek rises inland, near Underwood, and flows through some good farming country. It was an important freshwater supply in the early days of the colony.

LAGOONS: An alternative name for Chain of Lagoons. It is 17 Km. south of St. Marys on the Tasman Highway. A geographical description of the inlet, which is named Saltwater Inlet, when the tide goes out it, leaves a "chain of lagoons". The beach is named Lagoon Beach.

LAKE CRESENT: A very popular inland lake, 26 Km. northwest of Oatlands-on the southern side of Interlaken Road. This is a well-known lake with trout fishermen since the late 1800's. It was originally known as Lake Laycock.

LAKE EDGAR: A small lake in the southwest, near the source of the Huon River. It became absorbed with Lake Pedder when it was flooded. It was in the southeast corner of Lake Pedder.

LAKE LEAKE: A small village on the inland lake of the same name. It is 35 Km. east of Campbell Town via the Lake Leake Road. Elizabeth River, which flows through Campbell Town, starts from Lake Leake. The lake was named after Charles Leake, an early pioneer in the Campbell Town district.

LAKE MACKENZIE: A lake in the Great Western Tiers, 12 Km. due south of Mole Creek. The Lake Mackenzie Road which branch of the Mersey Forest Road is the only road into the lake. The Fisher River feeds the lake and is part of the Mersey-Forth Power Scheme.

LAKE MARGARET: The source of the electric power for Queenstown, situated 14 Km. north of Queenstown. The power station was built by the Mount Lyell Company to generate power for the mines. The station commenced operation soon after the start of World War I. The area where around Lake Margaret has the reputation of being the wettest place in Australia.

LAKE PEDDER: A large lake in the southwest 159 Km. from Hobart. This is a companion lake for Lake Gordon; Pedder acts as a feeder lake. Together they form the largest, inland, freshwater storage in Australia, able to hold 27 times the volume of water in Sydney Harbour. Popular lakes with anglers, record size fish have been caught there.

LAKE St.CLAIR: A beautiful lake set among the highest mountains in Tasmania, 178 Km. west of Hobart. It is the deepest, natural, freshwater lake in Australia with a depth of 190 metres; the source of the Derwent River. Discovered and named by George Franklin in 1835, after a family in Scotland.

LALLA: A small place on the Lalla Road. It is 5 Km. east of Lilydale, with a station on the North-Eastern Line. A popular place for tourists, it a weekend market known as "Appleshed".

LANABA: Situated on the Calder Road 7 Km. south of Wynyard, it stands on the edge of a large pine plantation. The logging area takes in Lanaba Hill.

LANDFALL: An area on the western side of the East Tamar Highway, 2 Km. north of Rocherlea. The name refers to a small hill; Barnards Creek runs around its western side and forms a marshy area between the hill and the Tamar River.

LANENA: Renamed to Blackwall.

LANE'S TIER: A logging district on the mountainous country 10 Km. north of Ouse. The middle tier is 454m high. The Lane's Tier Road runs up the eastern side of the tier, and the Strickland Road on the Western Side.

LANGLOH: A property on the Lanloh Road, 6 Km. northwest of Hamilton via the Lyell Highway. The road leaves the Lyell Highway 3

Km. past Hamilton and has a few old properties along its 6 Km. path north.

LAPOINYA: A small place on the Lapoinya Road. It is 6 Km. off the Bass Highway at Sisters Creek (via the Myalla Road). The area is noted for the Lapoinya Rhododendron Gardens with some of the tree varieties growing as high as 6m tall. Lapoinya is aboriginal for "fern tree" and these once covered much of the district.

LATROBE: This large country town sits between the Bass Highway and the Mersey River, the centre of a rich rural area. The first dwelling built on the town site was in 1836 and land sales took place some 20 years later. It was named after Administrator Charles La Trobe, who was acting Lieut-Governor of Tasmania for a few months (1846-7). When first named it was La Trobe but later changed to its present name. An important port town, boats operated from Bells Parade until the Mersey River silted up.

LAUDERDALE: A village on the narrow neck of land separating Ralphs and Fredrick Henry Bay. It is on the South Arm Road, 14 Km. from Bellerive. In 1824 Robert Mather was granted land in the area. He was responsible for changing the name of the township from Ralphs Bay, to Lauderdale after the village Lauder in England.

LAUNCESTON: This is Tasmania's second largest city and Australia's third oldest. It is situated 202 Km. north of Hobart. The city has a population of around 64,000 and is a thriving commercial centre but still has the relaxed life style of a country town. In 1806 Col. Paterson moved his headquarters to Launceston after trying several other sites in Port Dalrymple. First known as Patersonia the name was changed to Launceston in 1807 in honour of Governor King's birthplace, Launceston, Cornwall. The city is situated at the confluence of the South Esk and North Esk Rivers. It was in Launceston that John Batman formed a syndicate, which sailed across Bass Strait began the township, Melbourne.

LAUNCESTON EAST: A densely populated area on the eastern side of the city centre. One of its best-known features is the Windmill Hill Reserve, which is almost on the border between the city centre and East Launceston. The mill was built in 1826 and farmers carried their wheat manually or by wheelbarrow up the hill to get it ground.

LAUNCESTON SOUTH: This is on the southern side of the city centre. Some of the older residential buildings are in this area, as it was on the Launceston to Hobart road link. A popular attraction in South Launceston is the Talbot Road Lookout.

LAUNCESTON WEST: This is southwest of the city centre. Some of the main tourist attractions in Launceston are in Launceston West the main ones are the Penny Royal World and the First Basin. The First Basin is part of the Cataract Gorge and Cliff Grounds. The South Esk River borders Launceston West.

LAWITTA: A small community, 2 Km. west of New Norfolk on the Lyell Highway. Lawitta is now considered an outer suburb of New Norfolk. The Derwent Valley Line had a station at Lawitta and by all reports it was a busy little station.

LAWPENNY: Once a large very old property on the Lyell Highway 10 Km. west of Hamilton. It was one of many properties owned by Edward Lord and managed by an agent. The property was described by pioneer Chaplin Robert Knopwood as " good land for many miles and rivers running around his (Lord's) 14,000 acres".

LEAM: This is an orchard-growing district on the banks of the Tamar River, 3 Km. west of Mount Direction. It has close ties with the Hillwood area on its northern end.

LEBRINA: A small village situated at the junction of the Golconda and Hextails Roads, 10 Km. north of Lilydale. It has become well known by travellers for the craft shop and the Heemskerk vineyards. There is a station on the North-western Line at Lebrina. It gets its name from the aboriginal word meaning "house" or "hut".

LEEKA: This is a settlement on the northern end of Flinders Island, 24 Km. north of Emita. It is the most westerly settlement on Flinders Island. Situated on the coastline it is a starting place for those wanting to climb Mount Tanner.

LEESVILLE: A small settlement on the western side of Smithton, 1 Km. west along the Montagu Road. This was a small settlement once populated by the families of Joseph Samuel Lee and the workers from the J.S. Lee and Sons Timber Company. This was a very successful company in the 1880's.

LEFROY: Once a very substantial town is now only a shadow of its past glory. Lefroy is 16 Km. east of George Town via the Bridport Road. A gold rush in the 1870's made Lefroy a boomtown. First known as Nine Mile Springs, the name changed to Lefroy in 1882 in honour of Sir John Lefroy, Governor of Tasmania for less than one year (1880-81).

LEGANA: A beachside resort. It is situated 13 Km. north of Launceston in the West Tamar Region, on the eastern side of the West Tamar

Highway. It is a fruit growing area. In recent years it has become popular because of the beaches in the area, they face onto the Tamar River.

LEGERWOOD: A town on the Ringarooma Road, 24 Km. southeast of Scottsdale. It is the centre of a large dairy-farming district with the development of a butter factory in the town. Formerly known as Ringarooma Road, it changed to Legerwood about 1890 after the home of James Scott in Scotland. It was proclaimed a town in 1939. The railway station was said to have been one of the busiest on the North-Eastern Line.

LEGUNIA: A small isolated place 6 Km. south of Ringarooma. It is situated on the banks of the New River, which rises on the northern face of Mount Victoria and about 1 Km. south of the junction of the New and Dorset Rivers. It was formerly known as New River but was changed in 1912. Legunia is an aboriginal word for "covering".

LEIPZIG: This was a settlement planned, laid out, but never built. It was to have been on the Royal George Road about 2 Km. up the St.Pauls River from Lewis Hill. The postal authorities had a Post Office at the Lewis Hill property, as Leipzig until 1921 it was then abandoned.

LEITH: A large seaside settlement on the Bass Highway 10 Km. west of Devonport. It is mainly on the northern side of the highway and the eastern side of Port Fenton. Forth River is on the eastern side and Turners Beach on the west. Port Fenton had been planned as a major port but the Forth River silted up. It was named after a seaport in Scotland.

LEMANA JUNCTION: This is a place on the North-West Railway Line where the line crosses the Mole Creek Road 4 Km. west of Deloraine. The township like the railway system has now faded from its former importance. It was originally Chudleigh Junction, and then changed about 1905. The name Lemana is aboriginal for "oak tree".

LEMONT: A small isolated place on the Lemont Road, 19 Km. off the Midlands Highway and 6 Km. north of Oatlands. At one time it was spelt Lamont but somewhere down the way it changed to Lemont.

LEMONTHYME: This is an area at the southern end of Lake Cethana. The power station is named Lemonthyme and the district around the Lemonthyme Creek and Hill are logging areas. Logging roads going in many directions but the power station is 23 Km. south of Gowrie Park.

LENAH VALLEY: A suburb of Hobart. Augusta Road runs through the centre of the suburb leading to the Lady Franklin Museum, which was a favourite place to go in the early part of the 1900's. Originally named

Kangaroo Valley it was changed to Lenah Valley. The word "lenah" is aboriginal for "kangaroo".

LENNON: It was a small place on the northern end of Bruny Island, just east of where Barnes Bay now stands. The name has been preserved in the area by Lennonville Point at the southern mouth of Barnes Bay. A navigation light is installed there.

LEONARDSBURGH: Changed to Ilfracombe and then to Beauty Point.

LEPRINA: A small place on the northern end of the Recherche Bay area. It is on the road pushed through by the Forest Department. During the early 1900's and up to the 1940's it was a very active timber-milling place; it had a 3 foot 6 inch tramway, which fed logs into the huge timber mill operating at Leprina.

LESLIE VALE: This is a small rural place on the Leslie Road, 6 Km. west of Kingston. The road is a link road between the Southern Outlet and the Huon Highway.

LETTS BAY: This is a large bay in Macquarie Harbour, situated 4 Km. south of Regatta Point. It runs south from Dead Horse Point, past the mouth of the King River. The Lowana Road runs the full length of the foreshore of the bay.

LEVEN: The name given to a picnic area overlooking the Leven River, 9 Km. south of Nietta-just off the Loongana Road. Close to the Leven Canyon, a favourite tourist spot for its spectacular view from the top of a crag. Leven was the original name given to Ulverstone.

LEVENDALE: A small farming community 16 Km. north of Runnymede is on the Woodsdale Road. Not named until 1901. When this was realized it was named after a prominent farm in the district "Leven Banks".

LEWIS HILL: A mining place, 24 Km. east of Avoca on the Royal George Road that has now disappeared. It was named from a nearby property, "Lewis Hill", owned by F.W. Stieglitz. He named it in 1833 after "Lewis Hill" in Ireland. Born in Bavaria, he had spent some time in Ireland before moving to Tasmania. There has been a weather station on the property, which has taken river recordings since 1929. The property was used as a temporary Post Office. A village was planned near by on the St.Pauls River named Leipzig but the name was changed to Lewis Hill in 1921.

LEWISHAM: This is an area of Dodges Ferry, 8 Km. east of Sorell. It is centred on the Lewisham Road and is a quiet resort district. Once used as

a port by the ferries that carried passengers and cargo to different places in Fredrick Henry Bay.

LIAPOOTAH: A power station on the Derwent River, 15 Km. south of Tarraleah. It was part of the Wayatinah-Liapootah scheme, which began in 1952. The Liapootah Power Station was finished in 1960. Liapootah is aboriginal for "creek".

LIAWENEE: A settlement on the western side of the Great Lake, 16 Km. from Miena. It is at the junction of the Lake Highway and the Lake Augusta Road, which follows the Liawenee Canal. The canal connects the Ouse River to the Great Lake, and since before the turn of the century, the area was known as the Liawenee Plains. The name is aboriginal for "fresh water".

LIENA: A small rural community on the banks of the Mersey River, 19 Km. west of Mole Creek in the Echo Valley. It is an isolated little place that relies on farming and logging. The name is a corruption of an aboriginal word "lienah" which means "fire in the bush".

LIETINNA: A small place on the North-Eastern Line, 5 Km. west of Scottsdale. The station is situated at the road junction of the Briggs and Oak Dene Roads, just before the line crosses the Brid River.

LIFY: An agricultural district, 34 Km. south of Carrick on the Liffy Road. The most popular attraction in the district is the Liffy Falls, 6 Km. west of the Hamlet. There are some different explanations as how it got the name but the favoured one is that Captain Moriarity named it.

LIGHTWOOD BOTTOM: Changed to Geeveston.

LILEAH: A small farming district on the northwest coast, 18 Km. south of Smithton. It is situated at the junction of the South and Lovetts Roads. Its name is taken from Mount Lileah, which is on the western side of the area.

LILICO: A little place at the junction of the Bass Highway and the Lillico Road, 5 Km. west of Devonport. There was once a small station on the North-West Line at Lillico. The Bass Highway runs beside Bass Strait as it comes down off Don Hill and along the edge of Lillico Beach. It was named after a family who were prominent in local and state governments.

LILYDALE: A country town 27 Km. northeast of Launceston-via Rocherlea then along the Lilydale Road. The area is dominated by Mount Arthur on the southeast side of the town. Through the 1870's Lilydale was

the main supply town for the different goldfields to the north of the town. Now Lilydale is an outer suburb of Launceston.

LILYDALE NORTH: A small community 6 Km. north of Lilydale on the North Lilydale Road. The main attraction in the area is the Bridestowe Lavender Farm, thought to be the largest single lavender unit in the world.

LINDA: Almost a ghost town, 7 Km. east of Queenstown on the Lyell Highway. So close to Gormanston it was sometimes mistaken for all one town. Like most towns on the West Coast it was involved in mining. The name is said to be from a French opera "Linda di Chamounix". Linda is in the Chamounix Valley.

LINDISFARNE: An eastern shore suburb of Hobart, fronting onto the Derwent River at Lindisfarne Bay. It was named after "Lindisfarne House", a property adjoining Rosny in the 1820's. It was originally named Beltana but it caused confusion with Bellerive and so was changed in 1903.

LINWOOD VILLAGE: A group of housing estate units in the suburb of Lindisfarne, in Linwood Court. It was built in the 1970's in the Gordon's Hill Road area.

LISDILLON: Another place that has almost disappeared is on the Tasman Highway, 29 Km. north of Triabunna. It has an alternative name of Mayfield. The Lisdillon name is from a property of the same name, built and named by James Radcliffe.

LISLE: A small hamlet 12.5 Km. south of Nabowla. It is an isolated little settlement on the Lisle Road in the middle of large pine plantations. Gold was discovered there in 1879 and the town grew rapidly, now it is a timber town.

LISLE ROAD STATION: Renamed Nabowla in 1913.

LITTLE HAMPTON: This is a property on the Bishopsbourne Road 3 Km. east of Bishopsbourne. It is situated on the southern side of the North-Western Line, just past the Toiberry Station.

LITTLE OYSTER COVE: Changed to Kettering.

LITTLE PLAIN: A small district on the Tasman Highway, at the Lottah Road junction, 35 Km. west of St. Helens and close to the Weld River.

LITTLE SWANPORT: A small village on the Tasman Highway 20 Km. north of Triabunna. Set in a large inlet on the eastern coastline it is a

popular place for fishing. George Meredith is credited with the naming it but evidence shows sealers were using this name before his time.

LITTLE TAYLOR BAY: A bay on the western side of South Bruny Island, 9 Km. south of Alonnah. It was the site of one of the first saw milling operations on Bruny Island. It was originally named Little Bay by French Admiral D'Entrecasteaux. Surveyor Sprent added Taylor to the name in order to give it an association with the bay next to it.

LIVERPOOL: This was place that was at first planned to be a little north of the present site of Port Huon. However, it was eventually placed nearer the Huon River.

LLANDAFF: A place on the Tasman Highway at the junction with the Coles Bay Road. The name is Welsh and was suggested by George Meredith. Llandaff got no further than the plan and pegged out stage.

LLANHERNE: The name of the area at Cambridge where the original, domestic Hobart Airport stood. Now it is used for private and light aircraft. It is situated on the eastern side of the Cambridge village.

LLEWELLYN: Situated on the Esk Highway, 26 Km. from Conara Junction on the banks of the South Esk River. Once known as Stony Creek it had a station on the Fingal Line. John Helder Wedge marked out a township in 1834 but it was never developed.

LOCCOTA: A small settlement on the southern end of Flinders Island, on the west coast side, 21 Km. south of Whitemark. It is situated between Mount Strzelecki and Trousers Point.

LOIRA: A small place on the West Tamar Highway 6 Km. north of Exeter. The original town of Exeter was planned for the area but it was never developed as a town. The name is aboriginal for "coal dust".

LOLLARA: Another place which is slowly disappearing. Lollara, at one time the site of a busy sawmill, is on the Huon Highway 6 Km. north of Huonville, near the Bakers Creek Road.

LONG BAY: Renamed Middleton.

LONG ISLAND: A small island in the Furneaux Group. It is situated in Bass Strait, off the northwest coast of Cape Barron Island. It is directly north of the only settlement on Cape Barron Island.

LONG PLAINS: This is an open area of ground on the eastern side of the Corinna Road. It starts 2 Km. south of Savage River and goes north for about 5 Km.

LONGFORD: An historical country town. It is 27 Km. south of Launceston (via Perth), on the western side of the junction of the South Esk and Macquarie Rivers. Because of the number of people from Norfolk Island who were resettled in the area around Longford in 1813, it was first known as Norfolk Plains. Then in 1827, the town was known as Latour, but this was later changed to Longford. The Christ Church in Longford is one of the oldest in the state and is adorned with a clock that was presented to the parish by King George IV.

LONGLEY: An orchard district on the Huon Highway. It is 20 Km. south of Hobart near the junction with the Sandfly Road. The North West Bay River flows through the area. It was originally named Leslie, a name that has been preserved by Leslie Hill, on the eastern side of Longley.

LONGLEY LOWER: This is an orchard and berry fruit-growing district, 26 Km. south of Hobart-on the Huon Highway. Situated on the western side of Vinces Saddle around which, the Huon Highway takes a detour.

LONNAVALE: It is an isolated little community, 20 Km. west of Huonville. It is on Lorkins Road and the northern side of the Russell River at Russell Flats. Originally a timber town, but about 1900 settlers turned to orchard growing.

LOONGANA: A district in the upper reaches of the Leven River around the Loongana Range, 34 Km. south of Burnie. It was named after a ship of that name which made a record breaking trip to Melbourne in 1912 carrying firemen and rescue gear for a major mine disaster on the west coast.

LOORANA: A dairy-farming district on King Island 11 Km. north of Currie. The dairy factory specializes in the production of mozzarella cheese operates at Loorana.

LORINNA: A small isolated district on the eastern side of Lake Cethana. It is situated 16 Km. south of Gowrie Park at the junction of the Lorinna and Botts Roads.

LOTTAH: Almost a ghost town, it is 34 Km. west of St.Helens at the junction of the Lottah, Poimena and Anchor Roads. Once a busy tin mining town and the seat of local government, the Anchor Mine was one of the best tin mines in Australia. The town was originally named Blue Tier Junction but was changed to Lottah in 1907, an aboriginal word for "gum tree".

LOUISVILLE: A holiday resort area 6 Km. south of Triabunna, at the end of the Louisville Road. It became a holiday resort in the 1980's after a factory there failed. It is believed to have been named by Signor Bernacchi for his son Louis Bernacchi who built his home there about 1890.

LOVELY BANKS: This is a large property on the western side of the Midlands Highway, 5 Km. past Melton Mowbray. The history of the property dates back to the convict era in 1820 when it was granted to John Bisdee. Bisdee was very well known in the colony for his home brew and he was first to introduce the fallow deer in Tasmania.

LOVETT: Now known as Cygnet the name changed in 1915 after a former State Auditor-General.

LOW HEAD: A popular holiday resort area Km. north of George Town. Low Head has two beaches; one is sheltered where the other is open to Bass Strait. A lighthouse, overlooking the entrance to the Tamar River, was built at Low Head in the 1830's, the present one was erected in 1888. When it was originally settled it was named Outer Harbour.

LOWANA: This is an isolated logging district centred on the Lowana Road. It is on the western bank of the Leven River, about 8 Km. of Gunns Plains.

LOWDINA: A former railway siding on the Main Line, 3 Km. north of Campania, just off the Colebrook Road. It was to service the farms in the surrounding district. Originally named Jerusalem Lower the name changed to Woodlands in 1894 and then to Lowdina in 1914.

LOWER MARSHES: A farming community 9 Km. west of Jericho on the banks of the Jordon River. It is on the Lower Marshes Road, which branches off the Midlands Highway at Jericho and runs in a large arc to connect to the Lake Highway a little north of Apsley.

LOWER SANDY BAY: A suburb of Hobart that has had a number of name changes. It was changed to Lower Sandy Bay in 1968 from Beachside. The markers for Lower Sandy Bay are from Wrest Point to Blinking Billy Point.

LOWER SNUG: An orchard-growing district, 2 Km. south of the Snug village on the Channel Highway. It is a district sheltered on the eastern side by Sheppards Hill.

LOWER WILMOT: A small farming district, 8 Km. north of the Wilmot Village. It is situated near the junction of the Wilmot and Hayes Roads, close to the Wilmot River.

LOYETEA: A small isolated place on the Loyetea Road 28 Km. south of Penguin. It is in a mountainous area overlooking the Leven River. It is a district that is used for logging around the Loyetea Peak south of the hamlet.

LUCASTON: An orchard-growing district in the Huon Valley. It is 6 Km. north of Huonville, at the junction of the Lucaston and Bakers Creek Roads. The first settler in the area was a man by the name of Lucas who set up a large property and named it "Ranelagh". He laid tracks and ran a tramway to Mosquito Point (which became Ranelagh Junction) in order to carry timber from his property to the Huon River and so ship to Hobart. Later, the district became an orchard growing area and the name was changed to honour the original settler.

LUGHRATA: A rural district on Flinders Island, 5 Km. north of Emita in Marshall Bay. It was named from the wreck of the ship "George Marshall" when it went aground there in 1862. Lughrata is mainly a beef district.

LUINA: A tin mining town on the Waratah Road, 16 Km. west of Waratah. The town was built to house workers of the Cleverland Tin Company. The mine was first worked in the early 1900's, but closed due to labour shortage. However, the mine and was reopened in 1968.

LULWORTH: A small village on the northern coastline, 14 Km. north of Pipers River along the Tam O'Shanter Road. A light railway once connected Lulworth with the slate quarries at Back Creek in order to bring the slate to Lulworth for shipping. The settlement was at one time named Tam O'Shanter.

LUNAWANNA: A small settlement on the western side of Bruny Island, 6 Km. south of Alonna. It was originally named Daniel's Bay but was changed in 1907 and used part of the aboriginal name for the island "Lunawanna-alonna". The bay in which the settlement is situated preserves the original name, Daniels Bay.

LUNE RIVER: A small community 10 Km. from Southport, it is very close to Ida Bay, on the western bank of the Lune River. It is a popular place with gem hunters, mainly the famous Lune River gemstones. At one time it was the centre of a thriving timber industry.

LUTANA: A northern suburb of Hobart situated on the western shore of the Derwent River. Originally named Risdon Rise, a naming competition was run by the E.Z. Company in 1920 when they were building their housing estate. Lutana was selected; it is an aboriginal word for "moon".

LUTREGALA: This was a township planned for the southern end of Bruny Island, near the junction of Simpson's Bay Road and the Bruny Island Main Road. The small creek, which runs through the area, has retained the name and flows into Simpson's Bay.

LYETTA: An orchard-growing district in the West Tamar Region, 16 Km. north of Beaconsfield. Often referred to as Clarence Point but is also known as Lyetta.

LYME REGIS: A small place 25 Km. northeast of Gladstone in Little Musselroe Bay. A few people live there; it was a planned town and laid out in Governor Arthur's time but was never developed. It was named after an English sea-side resort.

LYMINGTON: This is a rural place on the Cygnet Coast Road, 7 Km. south of Cygnet, on the southern side of Copper Alley Bay. Once it was a convict probation station now an orchard-growing district. It was originally named Lymington South.

LYMINGTON NORTH: Formerly named Nile, changed to Lymington North then reverted to Nile.

LYMINGTON SOUTH: Renamed Lymington.

LYMWOOD: It is a small settlement on King Island, situated on the Crowes Road 19 Km. southeast of Currie via Pegarah. The road is the main one between Currie and Grassy.

LYNCHFORD: A mining town on the west coast 6 Km. south of Queenstown. It began in 1881 when Cornelius Lynch found good gold in what is now known as Lynch's Creek. The town started to grow in 1883 as more prospectors moved in to work in the gold field.

MAATSUYKER ISLAND: An island in the Maatsuyker Group 10 Km. off the southern coast. The group is made up of three islands with De Witt and Maatsuyker being the biggest and best known. Maatsuyker is the southern most of the islands with a well-known lighthouse. It was a notorious area to navigate for ships in the Great Southern Ocean. The islands were discovered by Abel Tasman in 1642 and were named by him after a member of the Dutch East Indian Company.

MACKAY'S: This was a railway station on the Smithton Trowutta Line, situated 20 Km. south of Smithton. It was built at the site of the large Mackay's Timber Mill that was working in 1911. Situated between Edith Creek and Trowutta it has always been a logging area.

MACKINTOSH: The lake and dam on the Mackintosh River 10 Km. north of Tullah. It is part of the Mackintosh Scheme, which began work in 1978. Water from the Sophia River and Lake Murchison are both fed into Lake Mackintosh by tunnel.

MACQUARIE HEADS: This is the entrance to Macquarie Harbour on the west coast, and formed by two large peninsulas of land which come almost to within .5 Km of each other. Captain James Kelly discovered it in 1815 when he made his famous trip around Tasmania in the whaleboat "Elizabeth". Captain Kelly named the area after the Governor Lachlan Macquarie.

MACQUARIE PLAINS: An area now very difficult to pin point. It is about 17 Km. west of New Norfolk on the eastern side of the Derwent River- with Bushy Park 1 Km. on the western side. First named Sorell Plains by Governor Lachlan Macquarie in 1821 but changed later by Governor Sorell (who it had been named after). Macquarie Plains and in those days covered 52 square miles. Reading the old maps and then modern ones the designated area changes until a railway was built. The railway station on the Derwent Valley Line indicates where it is today. The postal authorities used the name Macquarie Plains at the Bushy Park Post Office till it was burnt down in 1967.

MAGNET: Another place which has now disappeared. It was a small town that sprang up around the Magnet Silver Mine and populated by workers from the mine. It was connected to Waratah by a narrow gauge railway but there is little left today.

MAGRA: A small settlement 3 Km. north of New Norfolk, formerly named Back River. The chapel at Magra was built in 1837. In the churchyard is Betty King's headstone, claims are made that she was the first white woman to set foot Australia. Born Elizabeth Thackery she was a convict transported in the First Fleet and said to be the first ashore on

Botany Bay. She made her way to Tasmania and married Samuel King, they settled in the Derwent Valley in 1808.

MAIDSTONE: This is a property south of Devonport between Quoiba and Spreyton. It was purchased and built up by Stephen Kelcey on his arrival from England. It is situated at the head of Figure of Eight Creek in Swan Bay (a little bay in Flour Mill Bay). Kelcey built a flourmill that was powered by the tidal system; it was successful for a couple of years.

MALBINA: A small community on the Sorell Creek Road, at the junction with the Glen Dhu Road. Originally named Molesworth but was changed because there were places with the same name. The present name is aboriginal for "drake".

MALAHIDE: An historic property 2 Km. north of Fingal. It is situated on the banks of the South Esk River just before the junction with the Break O'Day River. The property was a grant to William Talbot in the early 1820's and he named it after "Malahide Castle" in Dublin, Ireland where his family had lived since the 12th century.

MALLANNA: A railway siding on the Strahan Zeehan Line 21 Km. south of Zeehan. A timber tramway branched off at this point and was used to bring firewood and farm produce to the main line. Preserved in name by a small lake about 1 Km. west of where the siding existed.

MANGARLORE: A farming district on the Midlands Highway- 6 Km. north of Pontville. There are a number of interesting places in Mangalore; one with a long history is "Shene". Owned by Gamaliel Butler in 1830 he named it after the family property in Richmond, England. Butler's son, who had studied architecture, designed a set of buildings for the property. The house stable, and barn were built but before they were finished the builders were lured away to the Victorian gold fields.

MANGANA: A small town that was once a large boom-mining town. It is situated 10 Km. north of Fingal on the Mangana Road. Gold was discovered there in 1852 and the small town thrived but capitol had to be found in order to get the gold out. It was named for an aboriginal who was chief of the Bruny Island tribe and the father of Truganini.

MARANDA HEIGHTS: A housing estate on the southern side of the Kingston village; on the Boronia Hill. This estate was built by the Housing Department in the early 1970's.

MARAWAYLEE: Renamed Riverside West in 1960.

MARGATE: A small orchard and agricultural district 9 Km. south of Kingston on the Channel Highway. Van Morey Road leads to an area

west of Margate where coal was discovered and mined for some time. Traces of the rail line can still be found in this area. Some believe it to be named after Margate, England, but by who is not recorded.

MARIA ISLAND: This is an island off the east coast about 15 Km. east of Orford, now a national park. It was discovered by Abel Tasman in 1642, he named in honour of the wife of Anthony Van Diemen. In 1825 Governor Arthur selected the northern end of the island to build a second penal settlement he named it Darlington, in honour of the Governor of New South Wales.

MARION BAY: A large bay on the east coast. Marion Beach is the main beach, a very popular place for beach recreation because it is reasonably sheltered. It is 7 Km. east of the Arthur Highway at Copping. It was named in 1802 by a member of Baudin's expedition in honour of the French navigator Marion du Fresne.

MARLBOROUGH: A town reserve, which was surveyed and laid out in Governor Arthur's time but never settled. It is situated in the vicinity of the junction of Marlborough and Lyell Highways. A Police Station was once built and manned there for some time in the 1850's.

MARRAWAH: A rich dairy-farming district on the extremity of the Bass Highway 48 Km. west of Smithton. It is situated on the rugged west coast of Tasmania. Once a timber district with a railway line, which ran between Marrawah and Smithton it, carried logs for milling at Smithton. Marrawah is aboriginal for "gum tree".

MARRAWAH EAST: Changed to Redpa in 1926.

MARYLANDS: A small western suburb of Burnie, it is situated on the western side of the city centre, now called Park Grove.

MATHINNA: Formerly a mining town on the Golden Gate Road 26 Km. north of Fingal. It is situated just off the junction with the Upper Esk Road. This was once a gold mining town and thought to be one of the larger towns in Tasmania. Sir John and Lady Franklin named the town after an aboriginal girl they befriended. Prior names for the town were Black Boy and Reedy Marsh.

MAURICE WEST: A district west of Ringarooma. It is on the western side of the Maurice River, based mainly along the West Maurice Road. Now a farming district the area had some mining activity in earlier days, and traces of workings can still be found.

MAWBANNA: This is a small community on the northwest coast on the Mawbanna Road-15 Km. south of the Bass Highway and 40 Km.

southeast of Smithton. Dip Falls on the Dip River are the main attraction to the village. The railway station for Mawbanna is 7 Km. north of the village.

MAWEENA: A place that no longer exists. The best reference to it is in the Walch's Almanac; there it is described as being in the Table Cape Municipality, and the electoral district of Darwin. This would place it near Wynyard; it had a telegraph station from 1924 to 1927.

MAYBERRY: A small farming district 12 Km. west of Mole Creek on the Mayberry Road (on the banks of the Marakoopa Creek). The road leads to the Marakoopa Cave State Reserve and the Marakoopa Cave on the edge of the Great Western Tiers foothills.

MAYDENA: A small village on the Gordon River Road 85 Km. west of Hobart. It is the railhead for the Derwent Valley Line. Built to house the workers of the Australian Newsprint Mills about 1940 when they opened their forestry section. Before the village was built the railhead was known as Junee.

MAYFIELD: A northern suburb of Launceston, situated on the eastern side of Alanvale and the southern end of Rocherlea. It is separated from Alanvale by the George Town Road.

MEADOWBANKS: A temporary village set up by the Hydro Electric Commission to house their workers who were building the Meadowbanks Dam-16 Km. from Hamilton. The Meadowbank Power Station is the last of six power stations on the Derwent River and is controlled from Liapootah. The power station was commissioned in 1967. The name is from Meadowbanks House.

MEANDER: A small timber milling and farming village on the Meander Road 15 Km. south of Deloraine. The village lies chiefly on the western side of the Meander River. Originally named East Meander it changed about 1912.

MELBA SIDING: A railway siding on the Emu Bay Railway Line 10 Km. north of Zeehan. Built in 1969 for the Mount Lyell Company it was opened in 1970.

MELCOMBE REGIS: This was a town reserve set aside but never settled. It was on the western side of the Lilydale Road on the shores of the Barnards Creek.

MELLA: This is a small dairy farming and agricultural district 3 Km. west of Smithton, just south of the Smithton Airport. The "Lacrum" farm

is situated in this area; it has a large rotary dairy, which is open for inspection.

MELROSE: A small community 12 Km. south of Devonport at the junction of the Melrose and Paloona Roads. The area was opened up when the Don River Railway Company built their railway through the district. Melrose became well known for the limestone quarry that operated there for a number of years until 1962.

MELTON MOWBRAY: Situated at the junction of the Lake Highway and the Midlands Highway, 7 Km. north of Kempton. There are a few farms and a hotel there now it once had a railway station on the Apsley Line. It was named after the English town of the same name. The hotel was built there in 1849 and has been a licensed establishment ever since.

MEMANA: A small farming community on Flinders Island situated at the northern end of the Darling Range 17 Km. east of Whitemark. A soldier settlement the district boasts it has the richest pastures in southern Australia.

MENGHA: A small farming district on the northwest coast; 8 Km. south of the Stanley turn off on the Bass Highway. Situated on South Road the district is well watered by Deep Creek that runs through the middle of Mengha.

MEREDITH PASS: This is now known as The Sideling and is part of the Tasman Highway, it starts about 24 Km. east of Scottsdale it winds and twists it's way over the southern end of the Sideling Range.

MERSEY BLUFF: A promontory at the mouth of the Mersey River on the northern side of the Devonport city centre. This is a popular recreational area with beaches and picnic facilities. The lighthouse, known as the Mersey Light marks the Mersey River for mariners.

MERSEYLEA: A small farming community 6 Km. south of Railton near the junction of the Railton and Merseylea Roads. It runs on both sides of the Mersey River (and bridges it near Merseylea). Originally named the Second Western River it was renamed Mersey by surveyor Goldie in 1826.

MERTON: A little known suburb of Hobart, usually thought of as part of Glenorchy, situated at the top end of Tolosa Street. The name comes from a property that covered the area called "Merton Vale". The church, built about 1900, is still standing.

MEUNNA: A small isolated place in very rugged country on the eastern side of the Meunna Hills. The Meunna Road is 14 Km. west of Preolenna. It is mainly a logging district, but there are a couple of small farms there.

MIANDETTA: This is a southern suburb of Devonport; it is on the western side of the Mersey River and the south side of the Bass Highway. Although it is mainly a residential area there are the fuel storage tanks on the foreshore of the Mersey River.

MIDDLESEX PLAINS: It is a district on the southern side of the Cradle Mountain Road about 20 Km. west of Lake Cethana. Discovered and named by surveyors of the Van Diemen's Land Company, as a place to raise sheep on the open country but the cold, wet winter weather soon proved it an unsuitable site.

MIDDLETON: A small rural and fishing settlement on the Channel Highway 38 Km. south of Kingston. Originally named Long Bay it changed to Middleton in 1892. Middleton was the maiden name of the wife of an early settler who was a notable boat-builder.

MIDWAY POINT: A peninsula of land in Pitt Water connected by the Arthur Highway 20 Km. east of Bellerive. It is well populated and named because of its geographical position. It is where the Arthur Highway crosses the southern tip and is carried by the Sorell Causeway on both sides. Its former name was Middle Point.

MIENA: A small place on the Lake Highway at the southern end of the Great Lake 131 Km. from Hobart. A place for tourist and fishermen, the district around it is used for grazing. The small settlement was first named Great Lake then changed to Miena in 1920. Miena is an aboriginal word for "lagoon-like".

MILABENA: A small isolated place 13 Km. south of the Bass Highway at Sisters Creek. It is situated on the junction of the Myalla and the Meunna Roads. Mainly a farming area it is close to the source of Sisters Creek.

MILLBROOK: Changed to Mount Nicholas.

MILLBROOK RISE: A large property on the eastern outskirts of New Norfolk. Situated on the Derwent River side of the Lyell Highway, it is now part of the Royal Derwent Hospital complex.

MILLS REEF: Renamed Alonnah in 1909.

MILVALE: A district off the Elderslie Road 4 Km. west of Brighton. The area is along the Milvale Road, which weaves south behind Cobbs Hill and enters the Boyer Road 4 Km. west of Bridgewater.

MITAH: Another place which no longer exists and the exact location are uncertain. There is a possibility it might have been between the Hobart suburbs of Lower Sandy Bay and Tarooma-near where Mitah Crescent is today.

MOINA: A small settlement in the rugged country on the western side of Lake Cethana, 16 Km. west of Gowrie Park. It is situated at the southern end of Lake Gairdner, which has a dam on the Wilmot River.

MOLE CREEK: A farming and forestry village 24 Km. west of Deloraine on the Mole Creek Road. A popular starting place for excursions to the Great Western Tiers, the surrounding area has a number of limestone caves. The name describes is the area because streams tend to appear and disappear into the ground.

MOLESWORTH: A small village on the Molesworth Road 8 Km. east of New Norfolk; via the Lyell Highway. It is situated on the western side of Mount Faulkner. The Molesworth Road is an alternative route to Berriedale passing through Glenlusk. It was named by the New Norfolk Council after Mr. Molesworth Jeffery.

MOLTEMA: A small farming village 3 Km. west of Elizabeth Town at the junction of the Brooklyn and Railton Roads. Formerly named Whitefoord Hills it was changed to Moltema in 1915.

MONTACUTE: A property in the Clyde Valley 14 Km. south of Bothwell on the Hollow Tree Road. This road was the coach link between Hamilton and Bothwell. It was a grant made to Captain Langdon in 1823 and it was he who built and named it.

MONA VALE: A large historic property built between 1865 and 1868 for Robert Quayle Kermode. It is sometimes known as the "Calendar House" because of the 365 windows, 52 rooms, 12 chimneys, 7 outside doorways and 4 stairways. During both world wars it was used as a training camp. Members of the Royal Family have visited and stayed on at least five occasions.

MONTAGU: An agricultural village 16 Km. west of Smithton on the Montagu Road. It was built up by the Van Diemen's Land Company to house their men working on "Woolnorth" property. It is believed to be named after an official of the Van Diemen's Land Company.

MONTAGU BAY: A residential suburb of Hobart on the eastern shore situated on the southern side of the Tasman Bridge. The name comes from "Montagu House" which was named such, when it was brought by Judge Montagu (formerly "Rosny House"). The property extended back as far as the Flagstaff Gully Road. The name changed to Warrane in the 1920's but reverted back to Montagu Bay in 1944.

MONTAGU WEST: This is a farming district around the junction of the West Montagu and Buckby's Roads: The last settlement on the road before the "Woolnorth" Station.

MONTAGU SWAMP: Renamed Togari in 1961.

MONTANA: A small dairy area 13 Km. south of Deloraine at the junction of the Montana and Brocks Roads. It is mainly centred on the historical property, "Chestnut". Originally known as Chestnut Park it was renamed in 1912. "Chestnut Park" was designed and built by William Archer in 1851; the estate was a grant in 1830 to his father Thomas Archer.

MONTELLO: An inner southern suburb of Burnie situated on the Montello Hills-between the city and Upper Burnie. The name comes from the hills named by the Van Diemen's Land Company.

MONTEZUMA: Another place that has now disappeared, it was on the west coast in the area northeast of Zeehan. The only access to Montezuma was via the North East Dundas Tramway. It was famous for the spectacular Montezuma Falls; many people travelled the tramways just to see them.

MONTGOMERY: This was a planned reserve at the mouth of the Wanderer River, on the southwest coast near where High Rocky Point.

MONTOS MARSH: Renamed Ellenville and then Ellendale.

MONTROSE: A northern suburb of Hobart on the north side of Glenorchy. Named after the Montrose Estate owned by Robert Littlejohn; believed to have been born in Montrose in Scotland.

MONTUNANA: A small agricultural district on the Bass Highway 24 Km. west of Wynyard-at the junction of the Newhaven Road; a siding on the North-Western Line was at Montunana.

MOOGARA: A hop-growing district 17 Km. west of New Norfolk in the Derwent Valley. Situated at the junction of the Uxbridge and Moogara Roads and named after a property in the district.

MOONAH: A residential and commercial suburb of Hobart. Originally named South Glenorchy it was a popular place with early settlers for picnics; a racecourse was also there. The name is aboriginal for "gum tree".

MOONAH WEST: On the western side of Moonah it is an area that went ahead in the early 1950's because of a housing boom. It is mistakenly known locally as Springfield because the electric trams, serving the area terminated in Springfield Avenue.

MOORDEN: A place on King Island that has now disappeared. Formerly known as Arcadia, a telegraph office operated there from 1915 to 1935. The name was changed in 1919 to Moorden.

MOORES PLAINS: An area on the southern side of Olinda. It is situated 11 Km. south of Wynyard around the junction of the Olinda and the Lowries Roads at the northern end of Baulds Hill.

MOORVILLE ROAD: A road 10 Km. long that starts on the western side of Burnie and goes south until it meets with Mount Road. The name comes from the small settlement 5 Km. along the road named Moorville. It was named by Mr. J.H. Munce who settled there after a place in England.

MOORINA: A small hamlet built on both side of the Ringarooma River, 44 Km. east of Scottsdale on the Tasman Highway. First named Krushka's Bridge after the Krushka brothers built the first bridge over the Ringarooma River. Once a large mining town it was considered to be more important than Derby. The name is that of Truganini's sister "Moorina".

MOORLEAH: A farming district 7 Km. off the Bass Highway at Flowerdale on the Preolenna Road. Originally known as Flowerdale Upper the name changed in 1914. Moorleah was on the railway line which once ran between Flowerdale and Preolenna.

MORETON: This was a town reserve situated near the Kindred Road on the banks of the Claytons Rivulet. It was planned as a settlement for soldiers who had served in India.

MORIARTY ROAD: Named Moriarty in 1968.

MORIARTY: A small rural district 7 Km. east of Latrobe in what is a large poppy growing area. Originally Moriarty was where Squeaking Point is today. It was named in honour of Captain Moriarty who was a prominent identity in the early days of the colony.

MORNINGTON: An eastern shore suburb of Hobart where a large housing estate was built by the Housing Department. It gets its name from a property called "Mornington", situated where the Sun Valley Inn is today.

MORVEN: Renamed Gordon Plains and then Evandale.

MOSS GLEN: This is a small place on the shore of Recherche Bay 25 Km. south of Dover. Situated on the Catamaran Road it was like most settlements in this part of Tasmania, involved in the timber industry.

MOUNT BARROW: A mountain 42 Km. east of Launceston. Television transmitters that serve the northern end of the state are situated on its peak, and are 1,415 metres high. It has been involved in mining and logging all around its slopes.

MOUNT DIRECTION: A very historic mountain, 26 Km. north of Launceston-on the East Tamar Highway. Matthew Flinders first sighted and he named it; he used it as a directional marker. It was also used as part of the chain of signal station in the system between Low Head and Launceston.

MOUNT EDGECOMBE: A small mountain 17 Km. east of Launceston. It is 420 metres high. The dense forest on the western side is a logging area.

MOUNT FARRELL: Changed to Tullah in 1910.

MOUNT FIELD: This is in the Mount Field National Park 77 Km. west of Hobart. Lake Dobson is 15 Km. from the entrance is where the Mount Field ski fields are situated. Another well-known attraction is Russell Falls on the Tyenna River. Mount Field is named after a visiting judge, Judge Barron Field who visited the colony in 1819-21.

MOUNT HEEMSKIRK: Renamed Remine.

MOUNT HICKS LOWER: A small farming community 13 Km. south of Wynyard, on the southern side of Mount Hicks at the junction with the Seabrook Road. From the road over Mount Hicks there is an excellent panoramic view of the Table Cape area.

MOUNT HICKS UPPER: This is a farming district 4 Km. south on the Mount Hicks Road. It is situated on the northern side of Tippetts Hill.

MOUNT LLOYD: A small alpine settlement 13 Km. southwest of New Norfolk. This is a logging and mixed farming district with the main

community around the junction of the Mount Lloyd and Paddys Flats Roads area.

MOUNT MAGNET: Renamed Magnet in 1903.

MOUNT McCUTCHEON: A mountain in the rugged southwest 40 Km. south of Queenstown. It is crossed by the Franklin River Road, the only road that deep into the southwest. The road branches off the Kelly Basin Road and is 18 Km. long with a very winding section crossing Mount McCutcheon.

MOUNT NELSON: A popular tourist attraction and a historic part of the Hobart suburb of Sandy Bay. The road from Sandy Bay up to Mount Nelson is noted for the 7 sharp corners. At the end of the Road is the Mount Nelson Signal Station, which was used, in the early period of the colony to signal when ships were entering the Derwent River. Now it is only a tourist attraction but from the reserve some of the Hobart area is to be seen. It was named by Governor Lachlan Macquarie in 1811, after the brig Lady Nelson that had served the colony well. The Post Office on Mount Nelson was known as Rialannah till 1957.

MOUNT NICHOLAS: This is the Central mountain in the Nicholas Range. It is on the northern side of the Esk Highway. The Mount Nicholas Road branches off the highway 7 Km. east of St.Marys and runs along the western side of the mountain. A small settlement named Mount Nicholas was there and formerly known as Millbrook but it has now disappeared.

MOUNT PLEASANT: Once large estate 16 Km. east of Oatlands. An estate built up by Roderick O'Connor and named in the census of 1848 with a residence overseer. The estate was sold in 1908 and subdivided by the Closer Settlement Board.

MOUNT READ: A mountain on the west coast with a history of mining. This township has now disappeared but it was about 4 Km. southeast of Williamsford and mainly around the mine head.

MOUNT RUMNEY: A small mountain 6 Km. east of Cambridge. It looks out over Seven-Mile Beach and is part of the Meehan Range. It was named after William Rumney who built "Acton House" in 1828 on the eastern side of the mountain.

MOUNT SEYMOUR: The small settlement of Mount Seymour is on the junction of the Tunnack and Crichton Roads 8 Km. southeast of Parattah. The mountain is 5 Km. north of the settlement and is 739 meters high. In 1966 it was selected to have the mast for the radio beam connecting Tasmania with the mainland.

MOUNT STRONACH: This mountain, immediately east of Scottsdale, is 497m high. The Tasman Highway and the North-Eastern Line both pass its southern slopes.

MOUNT STUART: A northern suburb of Hobart on the side of Knocklofty. Being an elevated area it gives some splendid views of the Derwent River and the city area. It is believed to have been named after Sir Stuart Elphinstone who was at one time head of the East India Company.

MOUNTAIN RIVER: A small orchard district on the southern slopes of Mount Wellington; 4 Km. off the Huon Highway of Grove. It takes its name from the river which rises in the Wellington Ranges and flows through the area and is a tributary of the Huon River.

MOWBRAY: A northern suburb of Launceston 3 Km. from the city centre, it is on the eastern side of the Tamar River. The Mowbray area has always been associated with horse racing and has a large modern racecourse. The grand stand at the Mowbray Racecourse was first laid in 1876.

MOWBRAY HEIGHTS: A northern suburb of Launceston. It is situated on the elevated, northern side of Mowbray. The Newnham Creek flows through the Mowbray Golf Course on its way to the Tamar River.

MUDDY CREEK (LAUNCESTON): A small creek which rises about 3 Km. south of Bridgenorth and flows into the Tamar River at Loch Lea, 5 Km. south of Rosevears. An important creek in the early period it was used as a point of reference by surveyors.

MUDDY CREEK (WARATAH): This was a place on the Emu Bay Railway about 2 Km. south of Guildford. However, it was never a stop on the line but used for picnic and sports carnivals through the 1920's.

MUDDY PLAINS: Renamed Pateena.

MUDDY PLAINS: Renamed Sandford.

MURCHISON DAM: Part of the Pieman River Power Scheme it is a 94m high dam on the Murchison River and creates Lake Murchison. Situated 30 Km. east of Rosebery it is used as a supply lake for Lake Mackintosh, the water is directed through the 2000m long Sophia Tunnel.

MURDUNNA: This is a little town on the Forestier Peninsula 8 Km. southeast of Dunalley. Situated on the Arthur Highway it is the only town on the Forestier Peninsula. Used as a relief station during the days of

horse-drawn coaches, it has always had strong links with the Port Arthur area.

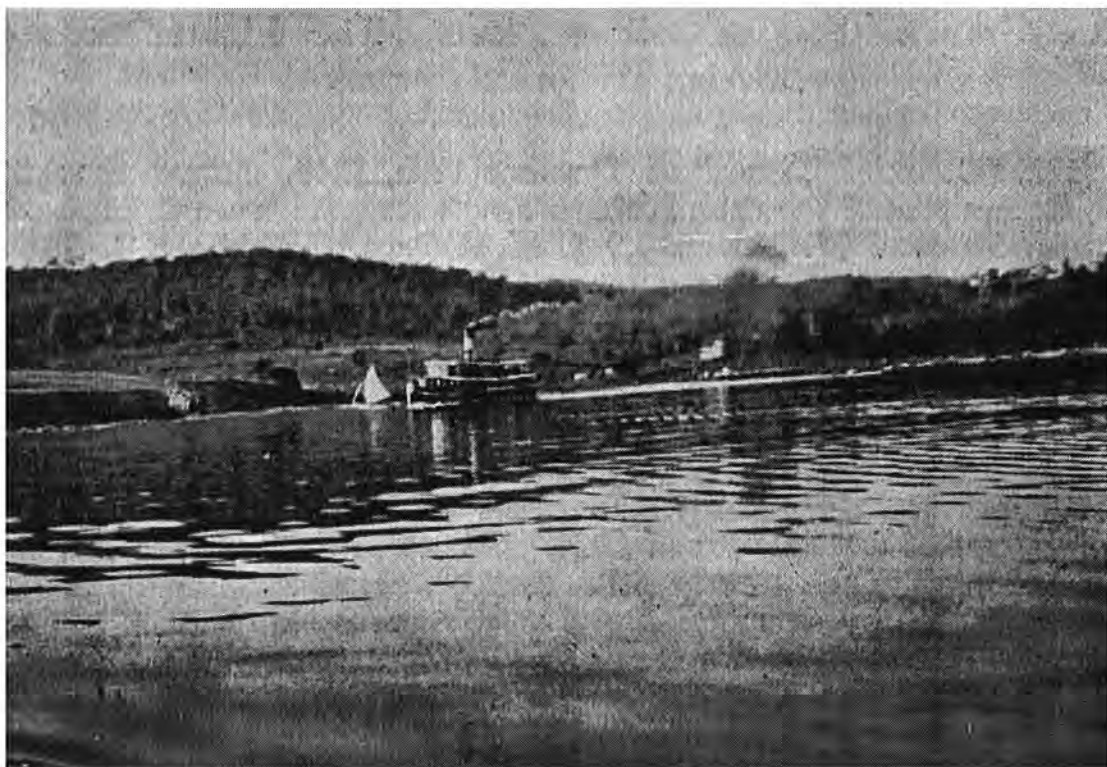
MUSSELBORO: A small settlement in a mining district on the southern side of Mount Barrow at the junction of the Musselboro and Burns Creek Roads. It is 30 Km. southeast of Launceston via the Blessington Road.

MUSSELROE POINT: A peninsula on the southern end of the Great Musselroe Bay, in the northeast corner of Tasmania. A large sawmill was built near the point in 1934 but was burnt down in 1946- its replacement was built in another place.

MUTUAL HILL: A logging and former mining district about 5 Km. east of Derby, on the southern side of the Ringarooma River. It was named after the Mutual Hill Tin Mining Company.

MYALLA: A rural district 2 Km. south of Sisters Creek and the Bass Highway, on the western side of the Sisters Creek. The railway station at Myalla also served the farming area of Sisters Creek; it was 1914 before the railway reached Myalla.

MYRTLE BANK: A farming district 33 Km. northeast of Launceston on the Targa Hill Road. A popular picnic area it has some beautiful views of the St.Patricks River and Mount Arthur Area. Settled by the Skemp brothers in 1883 when they brought a 20-acre block at Myrtle Bank.



Montague Bay c.1930

NABAGEENA: This is a farming and timber-milling district 20 Km south of Smithton, at the junction of the South and Maguire's Roads. Nabageena is an aboriginal word for "sunny hills"; the community is at the foot of the Sunny Hills. An area, which was late opening up and it was 1900 before the first selections of land were made.

NABOWLA: A village on the Lisle Road that grew around an important station on the North-Eastern Line. It is in farming and logging district on the eastern side of the Little Forester River. When the railway station first opened it was named Lisle Road Station and so was the settlement, the name changed to Nabowla in 1913.

NALA: A small farming district on the Nala Road 13 Km. east of Oatlands. Situated where the Nala Road crosses the Main Line railway and goes west past some very historic properties.

NARACOOPA: A village on the east coast of King Island 26 Km. east of Currie. It is a picturesque place with good views of the Counsellor Island and Bass Strait. A monument to Lieutenant Robbins who claimed King Island as a British possession stands at Naracoopa. It was the island's second main port and is still the storage place for the islands fuel supplies. At one time the settlement was known as Taroona: Naracoopa is an aboriginal word meaning "good".

NAREEN: This is a pastoral property on the Lyell Highway 12 Km. northwest of Gretna. It is situated on the eastern side of the highway with Mount Spode behind it.

NARRAWA: A small isolated district 4 Km. west of the Wilmot Village. The Narrawa Road is a link road for loggers and goes between Wilmot and the South Nietta Road, crossing the Wilmot River along the way.

NATIONAL PARK: This is a small settlement on the Gordon River Road that grew around the entrance to the Mount Field National Park, 73 Km. west of Hobart. The railway station served the passengers on the very popular one-day excursions to National Park.

NATIVE CORNERS: A district 11 Km. northwest of Campania on the Native Corners Road. Once the original road linking Campania and Colebrook it goes west around Postboy Hill. Aborigines killed a Post boy as he went along the road near the hill and so it was named.

NATIVE PLAINS: This is an area immediately east of Railton stretching along the banks of the Mersey River. The Native Plains Road starts in Railton, goes east crosses the Mersey River then heads north. It was one of the first roads to be built in the district.

NATIVE TIER: Renamed Osterley.

NATONE: A village and an agricultural area, 15 Km. south of Burnie near the junction of the Stowport and Camena Roads. It is believed to have been named by the Van Diemen's Land Company.

NATONE UPPER: This is a farming and agricultural district 23 Km. south of Burnie. It is on the Upper Natone Road, just south of the junction with the South Riana Road.

NEEDLES (THE): A small farming district 9 Km. west of Deloraine on the Mole Creek Road; where the North-Western Line crosses the road and the Needles siding was situated. The name comes from the Needles Ridge south of the settlement and is a good description of the ridge.

NIEKA: A small alpine village on the Huon Highway 5 Km. past Fern Tree. It is a very quiet little place, once a thriving village with its own school and Post Office.

NELSON CREEK: A small creek that flows under the Lyell Highway 15 Km. east of Queenstown in the Nelson Valley. The area is noted for some spectacular waterfalls and there are a number of walking tracks for people the views them. The creek is a tributary of the Nelson River.

NEW GROUND: A small rural district 4 Km. south of Moriarty. It is the former name of the whole area, which takes in Moriarty. All but disappeared, it is now only shown on very detailed maps.

NEW NORFOLK: A large town on the banks of the Derwent River 38 Km. west of Hobart, the main town of the Derwent Valley. A very historic town, it had it's beginnings about 1806 when the settlers from abandoned Norfolk Island were resettled in the district. Known first as The Hills, Governor Lachlan Macquarie visited the settlement he wanted to name it Elizabeth Town after his wife. However, it was later decided to name it New Norfolk to help the new settlers feel more at ease. Elizabeth Town was given to the next town to be decreed.

NEW RIVER (NORTH): The settlement of this name was changed to Legunia. The New River is a small river that rises in the northern foothills of Mount Victoria and is a tributary of the Dorset River.

NEW RIVER (SOUTH): This is a large river in some very rugged unexplored country used as the eastern boundary of the South-East National Park. Almost in the centre of the southern coast it flows into the large New River Lagoon, this area was logged for a long time before the turn of the century.

NEW TOWN: A northern suburb of Hobart that is both a residential and commercial district. It is a very old suburb with some historic old buildings. The early settlers started farming the area to try and feed the colony. The most historic building is "Runnymede House" which was built by Robert Pitcain and sold it to Bishop Nixon in 1850. It became a municipality but was absorbed into greater Hobart in the 1930's.

NEWBURY SIDING: This was a small temporary siding on the Derwent Valley Line about 3 Km. west of National Park. An unsealed road named Newbury Road, branches off the Gordon River Road about the place where the siding existed.

NEWNHAM (A): Renamed Mowbray Heights in 1961.

NEWNHAM (B): A northern suburb of Launceston. It is situated on the eastern side of the Tamar River and the western side of Mowbray Heights.

NEWSTEAD: A suburb of Launceston situated on the eastern side of East Launceston. Named after "Newstead House" this was which was built and named by Ronald Campbell Gunn in 1855. The name of the Post Office in Newstead was changed in 1919 to Kawalla and was not renamed to Newstead until 1961.

NICHOLLS RIVULET: A small orchard community 8 Km. east of Cygnet on the Nicholls Rivulet Road, on the banks of a rivulet of the same name. Although different in spelling it was named after the first settler William Nichols who settled there in 1834.

NICHOLLS RIVULET UPPER: This was a small area, which has now lost its identity. It was situated on the Nicholls Rivulet Road, 5 Km. east of the Nicholls Rivulet settlement. A Post Office operated there from about 1925 to 1929.

NIERRINA: An agricultural district situated in the hilly country 4 Km. west of Margate. It is an area like most in the district where coal was mined for some time. A tramway linking Kaoota and Nierrina once existed there.

NIETTA: A small farming community 31 Km. south of Ulverstone situated at the junction of the South Nietta and Loongana Roads. A railway line was opened in 1915 connecting Ulverstone and Nietta but is now closed and some of the line pulled up.

NIETTA SOUTH: A place at the junction of the South Nietta and Maxfields Roads 36 Km. south of Ulverstone. An estimated 50,000

people travel each year through South Nietta to visit the Leven Canyon 6 Km. west of Nietta South.

NILE: A little village on the Nile Road 11 Km. south of Evandale on the banks of the Nile River. An historic village, the church at Nile has a headstone erected in memory of a veteran of Waterloo. Named after the "Nile Farm", a farmhouse built about 1840. Originally named Lymington but there was a Lymington in the south so was changed to Lymington North. However, this still caused confusion so it was renamed Nile.

NINE MILE SPRINGS: Renamed Lefroy.

NIVE ROAD: The name given to a Post Office used by the Hydro Electric Commission workers in the area near Tarraleah. It was a temporary office used for only about 1 year, then reopened as Tarraleah.

NO WHERE ELSE: A district 7 Km. south of the Barrington village along the No Where Else Road. The signpost showing the way to the district is thought to be the most photographed one in Tasmania. The name originated when a farmer in the area was frequently where the road led. His reply, "No Where Else" prompted the locals to adopt the name. It was later made official.

NOOK (THE): A small farming settlement 6 Km. north of Sheffield on the Nook Road. The name is most probably after an early settler or official.

NORFOLK PLAINS: Renamed Longford.

NORTH MOTTON: A dairy-farming village on the Preston Road 9 Km. south of Ulverstone. There was a station at North Motton when the railway was running between Ulverstone, and Nietta, it was removed in 1958.

NORTH MOUNT CAMERON: Renamed Gladstone.

NORTH MOUNT LYELL: This was more of a mining company than a location on the west coast. The company was run by James Crotty, it was called North Mount Lyell Copper Company, it failed through mismanagement. The company played a big part in shaping the history of the west coast area.

NORTH WEST BAY: A large bay situated at the northern end of the D'Entrecasteaux Channel. The towns, Snug, Margate and Howden all face into this bay. In the early days of the colony it was a popular shipbuilding and safe a anchorage.

NORTHDOWN: A property on the Sorell Road 13 Km. east of Devonport; the Sorell Road runs between Port Sorell and Devonport. The large house was built for, and named by, Mr. Edward Curr in 1827. He was the first manager of the Van Diemen's Land Company and he established his headquarters at Northdown.

NOTLEY HILLS: A small place 24 Km. northwest of Launceston via Bridgenorth, on the Notley Hills Road. The main attraction in the area is the Notley Fern Gorge. This is a reserve and sanctuary with about the only remaining example of the rain forest once covering the West Tamar Region. Mr. C.J. Cheek M.L.C. named the area after his hometown in England. Originally it was named the Forester Hills.

NUBEENA: A town on the western side of the Tasman Peninsula, 13 Km. northwest of the Port Arthur Township. It is the largest town in the Tasman Municipality and is situated in Parsons Bay. Originally the town was named Wedge Bay; it was an important link in the semaphore stations set-up on the peninsula.

NUGENT: A small farm and orchard-growing district 14 Km. south of Buckland on the Nugent Road. The Nugent Road runs between Buckland and the Arthur Highway.

NUGHATA: Renamed Loccota in 1924.

NUNAMARA: A small farming settlement on the Tasman Highway 25 Km. from Launceston. It is situated where the highway crosses the St.Patricks River and the turn off to Patersonia.

NUTGROVE: Part of the Hobart suburb of Lower Sandy Bay. It is based mainly around Nutgrove Avenue and the popular Nutgrove Beach on the western side of Sandy Bay Point.

NYELLAVERT: The Launceston suburb of Trevallyn. There is a story to the spelling of Trevallyn. Apparently, who made the date stamp for the postal authorities got the name back the front. The stamp was used by the Post Office from 1937 until 1968 and the name "Nyellavert" stayed for sometime. There is no proof that this story is true but the rumour has been a constant one for the way it was spelt.

OAKS (THE): A railway station on the North-Western Line. It is 7 Km. south of Carrick, where the railway line crosses the Bracknell Road. A few small farms are in the area most probably named after Major H.R. Oaks who arrived in the colony in 1824.

OAKWOOD: A small hamlet on the Arthur Highway 5 Km. north of Port Arthur. Originally it was named Long Bay.

OATLANDS: An historic town on the Midlands Highway-90 Km. north of Hobart. Now a quiet little country town it attracts a number of tourists to visit the many historic buildings in the town. Governor Lachlan Macquarie thought the site 'a very eligible situation for a town' and named it Oatlands because it reminded of his native Scotland and the grain that grew there. Although named in 1821 it wasn't until 1832 that the first survey was carried out by Surveyor Sharland. The oldest building in the town is the Courthouse built 1829 and the Callington Mill a unique wind-driven flourmill (1830-1890).

O'BRIEN'S BRIDGE: Renamed Glenorchy.

OBERLIN: Renamed Black Hills in 1968 it is a small community on the Black Hills Road 10 Km. north from New Norfolk.

OCEAN VISTA: An outer suburb of Burnie, it is on the western side of Cooe and the eastern side of Camdale. Some magnificent views of Bass Strait are gained from the suburb, hence the name.

OCEANA: A railway station on the end of a private spur line that branched off the, Government run, Zeehan Strahan Line 3 Km. south of Zeehan. The spur line was on the eastern face of Mount Zeehan it was used by the Oceana Company, they had a mining operation on Mount Zeehan.

OKEHAMPTON: This is a property situated 6 Km. east of Triabunna at the end of Okehampton Road. It was originally, the property of Major Thomas Lord, Commandant of the Darlington Penal Settlement. During the whaling period four stations were set up on the Okehampton property one is still standing.

OLD BEACH: This is a growing settlement on the eastern shore of the Derwent River about 10 Km. north of Risdon. The settlement which is very old it was first formed around a ferry service which ran from Austin's Ferry, on the western shore, to Old Beach, on the eastern shore. The first settler to receive a grant in the area, was John Ogle Gage, he received it in 1824. At that time it was known as Old Beach, Broadmarsh.

OLD FARM: An area situated behind the Cascade Brewery in the Cascades - a suburb of Hobart. It is mainly a road that starts there and weaves its way in the foothills of Mount Wellington. The early part of the road behind the Brewery follows the Guy Fawkes Rivulet for a short distance.

OLD SURREY ROAD: A road on the eastern side of Burnie. It starts in South Burnie on the western side of the Emu River (at the Bass Highway) and leads to the Surrey Hills to the south. It was a key road, used and named by the Van Diemen's Land Company. The road was first named Surrey Hills Road.

OLINDA: A small settlement on the Olinda Road 13 Km. south of the Bass Highway near Wynyard. It is well known for the Olinda Forest Reserve, which is made up of native forest and pine plantation. The earliest pine planting was in 1920. The area has also been developed as a picnic and children's adventure playground.

OONAH: A small farming place on the Oonah Road. It is .5 Km. off the Murchison Highway and 38 Km. south of Somerset. Oonah is situated in the middle of a pine plantation. A station on the Emu Bay Railway was 22 Km. east of the settlement it was named Oonah Road Siding. This siding was used mainly to pick up produce from farms along the Oonah Road.

OPPOSSUM BAY: A settlement on the South Arm peninsula. By boat on the Derwent River it is about 30 Km. south of Hobart. Situated on the furthest part of the South Arm peninsula it faces onto the Derwent River making it a popular place for day trips and holiday shacks.

ORFORD: An historical town at the mouth of the Prosser River - 95 Km. east of Hobart on the Tasman Highway. It began as a convict settlement in 1825, and later a station for a local garrison and Whalers station. There are several different versions as to how it got its name. One it was named after the Earl of Orford who was related to an early settler. Two it was named after a prison escapee who was captured on the riverbanks there.

ORIELTON: This is a small farming district on the Tasman Highway 7 Km. north of Sorell. It gets its name from the "Orielson Estate" originally belonging to Sir John Owen and managed by Edward Lord. Lord is said to have given the name after a family estate in England.

ORMLEY: A large pastoral property 12 Km. east of Avoca. This is situated on the Esk Highway between the highway and the South Esk River. There was also a station on the Fingal line for Ormley. The property was used as early as 1827 for grazing cattle and sheep, now it includes the property of Aberfoyle.

OSMASTON: A small farming place 4 Km. south of Exton, it is situated at the junction of the Osmaston and Exton Roads. The Quamby Brook flows through this area which a couple of old properties along the Osmaston Road.

OSTERLEY: A mixed farming areas 13 Km. north of Ouse on the Victoria Valley Road. Settlers first started to move into the area about 1870. First named Austerley, it is not known whether this was an incorrect spelling or the reason it was changed to Osterley.

OTAGO: A place on the eastern shore of the Derwent River - on the northern side of Old Beach. The name is taken from near by Otago Bay. An old sailing ship was hulked in the bay, a ship with a very colourful past and known as Joseph Conrad's "Otago".

OUSE: A country town on the Lyell Highway 89 Km. west of Hobart. It is situated on the junction with the Victoria Valley Road and on the banks of the River Ouse. The Victoria Valley Road was once the main access to the west coast area until the Lyell Highway replaced it. The name comes from the early coaching days when it was known as "the ooze" because of the swampy nature of the area; later it was changed to the present name of Ouse.

OUTER COVE: Changed to George Town

OUTER HARBOUR: Changed to Low Head.

AXBERRY: A district 20 Km. northeast of Scottsdale - on the eastern side of the Waterhouse Road. In this area are the Oxberry Plains, Oxberry Road and Oxberry Creek.

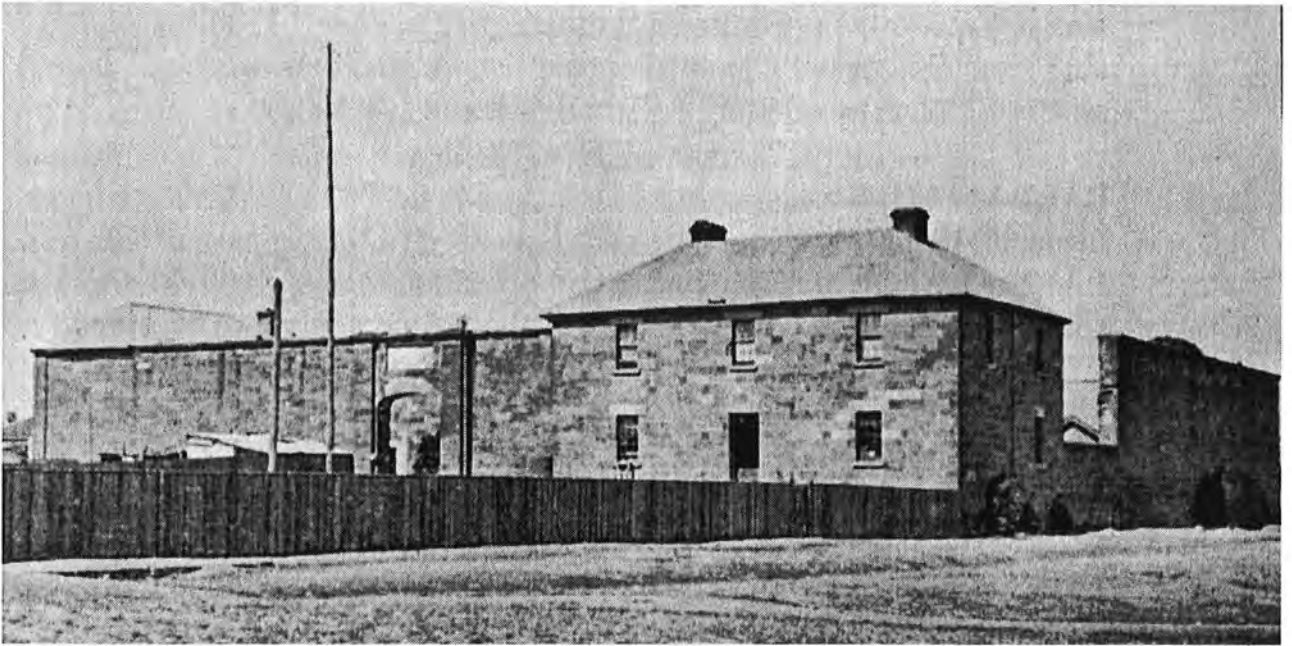
OYSTER COVE: The settlement of Oyster Cove is just off the Channel Highway on the Oyster Cove Road. It is an orchard and agricultural district. The name is from the inlet on the coast line named Oyster Cove and was named because of the large number of oysters found in the bay. It was originally named Conger Cove because Robert Knopwood shot a conger (an eel) there in 1804.



Blue Tier before the name was changed to Poimena



Braxholm c.1910



The Oatlands goal in the 1930's not long before it was demolished



Burnie in 1903

PALANA: A small settlement on the northern end of Flinders Island 32 Km. from Emita. It is the northern settlement on Flinders Island, situated on Blyth Point overlooking Palana Beach and Blyth Bay.

PALLAWAH: Renamed Daisy Dell.

PALMERSTON: A large property on the Saundridge Road. It is 19 Km. southwest of Cressy on the banks of the Palmers River. The property a grant made to Joseph Archer and originally named "Woodside".

PALOONA: This is a small settlement on the Paloona Road 18 Km. southwest of Devonport - between the Forth River and the Melrose Creek. The name of the settlement has also been used on the Paloona Dam and Power Station, which is about 6 Km. further south and is part of the Mersey-Forth Power Scheme.

PAMENA: Renamed Lanaba.

PANSHANGER: An isolated property on the eastern side of the Macquarie River - 4 Km. directly east of Cressy. It is situated on the banks of the Macquarie River just past the junction with Brumby's Creek. The property was granted to Joseph Archer before 1820.

PANORAMA HEIGHTS: An eastern suburb of Devonport. It is on the elevated part of the eastern side of the Mersey River and on the southern side of the Bass Highway. It was named because of its setting.

PAMENA: Renamed Lanaba in 1914.

PAPER BEACH: This is a popular holiday resort area on the western banks of the Tamar River. Paper Beach is on the northern side of the knob of land jutting out into the river. It is 9 Km. northeast of Exeter and was formerly known as Robigana.

PARADISE: A small rural district 8 Km. south of Sheffield on the Paradise Road. It is in an area in which biblical names are very common and it seems ironical to have something called Devils Gate so near.

PARAKA: Renamed Bacala in 1913.

PARANGANA: A dam site 20 Km. southwest of Mole Creek, situated 1 Km. below the junction of the Fisher and Mersey Rivers. The Parangana Dam diverts the flow of the Mersey River west to the Forth River through a 6 Km. long tunnel to the Lemonthyme Power Station.

PARATTAH: This town was established when the Main Line Railway was built. First named Oatlands Railway Station, it is situated 7 Km.

southeast of Oatlands. Because the railway so far from Oatlands a small link line was built between Parattah and Oatlands this was replaced by a motor coach in the early 1930's. The township of Parattah was built on land granted to Henry Bilton in 1830, he named it Hilly Park. It was named Parattah in 1879 by the Oatlands Council and is the aboriginal word for "ice and cold". There were plans to name it Huntworth but it was found this name was already in use in the district.

PARDOE DOWNS: An eastern suburb of Devonport. Situated on the Northern side of East Devonport; Pardoe Beach is just east of the suburb. It was named after a property taken up by William F. Wright in 1841. "Pardoe" was Wright mother's maiden name. The Devonport Airport is also on the eastern side of Pardoe Downs.

PARENNA: A small rural community on King Island, 20 Km. west of Currie on the Fraser Road. It is situated in the rich farming district, part of the Pegarah Soldier Settlement Scheme.

PARK BEACH: This is one of the older parts of the Dodges Ferry. It is the housing area, which faces onto Carlton Beach and Fredrick Henry Bay - about 43 Km. east of Hobart. It was a popular place for weekend shacks but is now much more residential.

PARK GROVE: A small southwestern suburb of Burnie. Situated south of Parklands it was formerly known as Marylands. A number of the older maps still show it as Marylands.

PARKHAM: This is a small rural settlement 16 Km. north of Deloraine. It is situated on the junction of Parkham and Brady's Plains Roads and the eastern side of the Rubicon River. Because of the thick bush it was a favourite hideout for Brady, the bushranger and was known as Brady's Plains.

PARKHAM EAST: This is a small rural district 6 Km. southeast of Parkham. It is on the East Parkham Road near the junction with the Weetah Road - on the eastern side of the Christmas Hill.

PARKLANDS: A waterfront suburb of Burnie situated on the western side of the city centre. The biggest tourist attraction in this part of Burnie is the historic Burnie Park. The park was once leased by the Van Diemen's Land Company and the Burnie Inn, classified by the National Trust, is also in the Burnie Park.

PARKNOOK: This is a property on the Lake River Road 13 Km. south of Cressy, on the eastern side of the Parnook Hill. This property was granted to Mr. James George Parker. There is a report that Parker was

badly treated by the bushranger, Matthew Brady, when he raided the property in 1825.

PARKSIDE: An outer suburb of St.Helens. It is situated on the eastern side of the Tasman Highway along the St.Helens Point Road. It is a popular place for holidays, picnics and walks. It is believed to be named after the "Parkside Farm" which is on St.Helens Point.

PARNELLA: A satellite suburb of St.Helens - on the St.Helens Point Road 7 Km. east of St.Helens. The Parnella Coastal Reserve which runs along the full length of it's foreshore faces onto Georges Bay; a sheltered bay popular for swimming.

PARNELLA HEIGHTS: This is the elevated area behind the suburb of Parnella. As well as giving good view of Georges Bay it over-looks the St.Helens Aerodrome.

PARRAMATTA: This was a town reserve, once settled. It disappeared when the road on which it was built was relocated. It was on the Old Deloraine Road about 15 Km. south of Latrobe on the eastern shore of the Mersey River.

PARRAWE: A small isolated place on the Murchison Highway 50 Km. south of Somerset. It is situated on the southern side of where the Murchison Highway crosses the Hellyer Gorge. The settlement is made up of a couple of farms.

PARSONS HOOD: This is a mountain about 28 Km. west of Rosebery and is 915 meters high. The only access into it is a vehicular track, which goes over Mount Lindsay. The Stanley River flows on the western side of Parsons Hood.

PASS RIVER: A place on King Island it was 18 Km. north of Currie. Situated on the western side of the island, near where the Pass River now passes under the North Road; near the junction with Cooper Road.

PATERSONIA: A small rural place 25 Km. east of Launceston via the Tasman Highway and Patersonia Road. It was named in order to preserve the former name of Launceston. Originally, Patersonia Road was the main road going east until it was replaced by the Tasman Highway.

PATERSON'S PLAINS: Renamed St.Leonards.

PATS RIVER: A small settlement on the west coast of Flinders Island on the Palana Road. It is the site of the Flinders Island Airport. Its name

comes from the small river that rises in the Darling Ranges and flows into Bass Strait near the Airport.

PAWLEENA: A small farming property 6 Km. north of Sorell at the junction of the Pawleena and Shrub End Roads. It is an old property dating back to the early 1800's. The property adjoining was named Shrub End.

PAWTELLA: A small farming community 18 Km. northeast of Parattah. It is situated at the junction of the Pawtella and Nala Roads and is part of the former Mount Pleasant Estate. Pawtella is aboriginal word for "Ringtail opossum".

PEA JACKET POINT: Renamed Wybalenna.

PEARSHAPE: A small settlement on King Island 20 Km. south of Currie on South Road. The road at Pearshape runs out to Cataraque Point - The English emigrant ship, Cataraque foundered on the rocks north of the point in September 1845 with the loss of 399 lives. The name for Pearshape is from the Pearshape Lagoon, which explains itself.

PEARSONS POINT: See Piersons Point.

PEGARAH: A little community 13 Km. west of Currie on the Pegarah Road, the main road between Currie and Grassy. This was used as an administrative centre for the Soldier Settlement Scheme in 1946. Pegarah is aboriginal for "ripe".

PELHAM: This is a little agricultural district 7 Km. west of Elderslie. It is on the Pelham Road as it passes the southern end of the Pelham Tiers. The road was used as a coach road linking Brighton, Broadmarsh and Hamilton; Pelham was used as a way station.

PELVERATA: An orchard-growing district 15 Km. east of Huonville via Woodstock. It is situated on the Pelverata Road just before the junction with Halls Track Road, and is watered by the Kellaways Creek. At one time a large sawmill operated at Pelverata.

PENGUIN: A large country town on the northwest coast 31 Km. west of Devonport - just off the Bass Highway. It was one of the last coastal towns to be settled about 1860. The Victorian gold rush created a demand for housing timber a large number of cutters and splitters moved in to supply the demand and created the town site of Penguin. It was named because of the large number of Penguins in the rookeries along the coastline.

PENNA: A small farming community on the Frogmore Peninsula 3 Km. north of Midway Point. When the railway line between Bellerive and Sorell was operating it was known as Frogmore. There was a small siding with that name but when the line stopped running it became Penna.

PENSTOCK LAGOON: A small lake 6 Km. north of Waddamana it is situated on the eastern side of the Waddamana Road. It was part of the original Waddamana Power Station but is now more popular as a place to go trout fishing.

PENZANCE: A small community that has grown around a caravan Park of the same name - 2 Km. south of Eaglehawk Neck. The name is very fitting as it is situated in Pirates Bay. There is good access to the popular tourist attractions in the rock formations along the coastline in that area.

PEPPERMINT BAY: Changed to Woodbridge.

PERKINS ISLAND: An island just off the northwest coast, about 8 Km. northwest of Smithton. The island comes to within a few meters of the mainland and is separated by the Perkins Channel.

PERTH: An historic town on the Midlands Highway 19 Km. south of Launceston. Perth is in a farming, sheep and cattle area. Governor Col. Lachlan Macquarie, on his way south in 1821, was so impressed with the area that he selected it as a site for a township and named it Perth. This was in honour of Mr. David Gibson of "Pleasant Banks". Mr. Gibson had emigrated from Perth in Scotland and resided in Evandale.

PETCHEYS BAY: This is a little community situated in a small bay on the Huon River. It is 14 Km. southwest of Cygnet on the Cygnet Coast Road at the junction with the Sunday Hill Road. The area was settled very early and an orchard was planted at Petchey's Bay in 1836. Because of the easy access to the Huon River it was also used as a pick-up point for ferries shipping their cargo to Hobart.

PICTON: It was a planned settlement which was to have been about 3 Km. south of Kempton on the Midlands Highway. Any trace of the settlement has now disappeared.

PIEMAN POWER STATION: A power station in the Lower Pieman Scheme on the Pieman River. It is situated about 10 Km. east of Corinna. The Hydro Electric Commission built a village and named it Stringers Creek. The name was taken from a creek that flows into the Pieman River on the western side of the dam face.

PIEMAN RIVER: Changed to Corinna.

PIERSONS POINT: A very historic point at the mouth of the Derwent River. It is situated 12 Km. south of Kingston on the eastern side of the Tinderbox Hills. Because of the good location it was the site of Hobart's Pilots Station. The French Admiral D'Entrecasteaux named Piersons Point after one of his officers during his survey in 1792.

PIGEON HILL: This is a hill 6 Km. south of Burnie situated between Mount Road and the Emu Bay Railway line. A railway siding was built on the line and named Six Mile Siding but in 1908 it was changed to Pigeon Hill.

PILLINGER: A place in the rugged country deep in Macquarie Harbour, about 40 Km. south of Queenstown. It was built by the North Mount Lyell Company to ship their ore and was connected by a railway to the mines. However, it proved unsuccessful. The settlement was first known as Kelly's Basin. Eventually the railway was shut down and the track was pulled up it is now used as a walking track.

PILLINGERS CREEK: A small creek that rises in the Maydena Ranges and passes under the Gordon River Road. It is 3 Km. west of Maydena it is a tributary of the Tyenna River. A small community lies near the creek, just before the tollgate on the Gordon River Road.

PINE LANDING: This is a point on the Franklin River about 8 Km. upstream from Macquarie Harbour. The river swings north and then south again. This area of the Franklin River became well known during the Franklin blockade.

PINE ROAD: This small settlement has now disappeared. It was situated 8 Km. south of Penguin on the road of the same name. There is a belief that the origin of the name came from lumbermen cutting the celery top pines.

PINE ROAD WEST: This is a small rural settlement 9 Km. south of Heybridge. It is on the West Pine Road where it crosses the Sulphur Creek. It is about 3 Km. west of where the original Pine Road was, roads lead back to Carmentown suburb of Penguin. The settlement is now shown on maps and referred to as West Pine.

PINEGA: This is a small farming district that has almost disappeared. It was situated on the Mathinna Plains Road, near the junction with Barnett Road. Used by the coaches as a way station for a while but it proved unsuitable.

PIONEER: A tin mining town on the Gladstone Road 16 Km. south of Gladstone, it is close to the Ringarooma River. Originally known as Bradshaw's Creek it was named after William Bradshaw who discovered

tin deposits there in 1877. This name remained till 1955 then it was changed to Pioneer. The Pioneer Tin Mining Company was formed in 1882 to develop the mine: A sawmill operated near the town for a long period.

PIPE CLAY: Renamed Cremorne in 1968.

PIPE CLAY LAGOON: A large shallow lagoon on the eastern side of the South Arm Peninsula. A small narrow inlet from Fredrick Henry Bay forms the lagoon. The small community of Cremorne is situated at the northern side of the inlet.

PIPECLAY BAY: A bay in Port Dalrymple situated at the southern end of George Town. Protected by Saltpan Point on its southern end, this was once known as Roundabout Point. The name for the bay was chosen very early as the name appears on very early maps.

PIPERS BROOK: A small rural community 33 Km. east of George Town on the Pipers Brook Road. The brook from which the name was taken is about 1.5 Km. west of the settlement, this was named after Ensign Piper who explored most of the area.

PIPERS RIVER: This is a rural community 23 Km. east of George Town on the junction of the Bridport and Back Creek Roads. It is on the banks of the Pipers River and named after Ensign Hugh Piper who explored most of the area.

PIPER'S RIVER UPPER: Changed to Lilydale.

PISA: A large pastoral property on the Macquarie Road 12 Km. south of Cressy. A small stream that is a tributary of the Lake River waters Pisa. The property has it's own private chapel named St.Marks.

PLENTY: A hop growing district in the Derwent Valley 48 Km. west of Hobart on the Glenora Road. Situated where the Plenty River enters the Derwent River, it was known for a time as River Plenty but was shortened to Plenty around 1938.

POATINA: A town 20 Km. southwest of Cressy it was built to house the construction workers on the Hydro Electric scheme. Now only those needed for maintenance remain there. Poatina is on the fringe of the Central Plateau and the name is aboriginal for "cavern".

POIMENA: This place has disappeared. It was 4 Km. north of Lottah at the junction of the Poimena and Sun Flats Roads. It is situated on the southern face of the Blue Tier that was the former name of the settlement. It was a tin mining town and disappeared when the tin ran out.

POIMENA RESERVE: A reserve in the northern Hobart suburb of Austin's Ferry, the entrance is off Wakehurst Road. It is set up for picnics and is popular because of the panoramic views of the Derwent River and surrounding area.

POINT RAPID: A point in the Tamar River situated on the eastern side of the Rowella settlement. The river makes a swing west and was often used as a reference point in earlier days. Settlers were reported to be farming at 'Blackwood Hills', Point Rapid in 1820; this was before the Rowella area was settled.

POLICE POINT: A small place 6 Km. east of the Huon Highway at Glendevie on the shores of the Huon River. It is situated at the junction of the Esperance Coast and Police Point Roads. The point from which the name is taken is about 1.5 Km. further south on the Huon River.

PONTVILLE: An historical town 27 Km. north of Hobart on the Midlands Highway. It is a small town that has many historic buildings and is the seat of local government. The town dates from 1830 and was one of the garrison towns on the highway between Hobart and Launceston. One of the best-known historic buildings is the St. Marks church, designed by James Blackburn and dates back to 1840. The town was originally named Brighton by Governor Lachlan Macquarie but was later changed to Pontville.

PONTYPOOL: A place along the Pontypool Road that branches off the Tasman Highway 21 Km. north of Triabunna. Planned to be a town site it was pegged out while Governor Arthur was in power. George Meredith suggested its name.

POOLE: A small settlement on Musselroe Point 24 Km. west of Gladstone. Another place planned as a town site by Governor Arthur. Several people have settled at Poole.

POOTARK: Renamed Stormlea.

PORT ARTHUR: This town is Tasmania's number one tourist attraction. It is situated on the Tasman Peninsula 102 Km. from Hobart. Established in 1830 when a decision was made to build a penal settlement there. Port Arthur operated as a penal settlement until 1887 when the remaining inmates were transferred to Hobart Gaol. During that period some 12,500 convicts were passed through the system. It was named in honour of Governor Arthur but after the penal system closed down it was changed to Carnarvon. The name change was made in an effort to dispel the bad reputation it had gained as a cruel place, but reverted back to Port Arthur in 1927.

PORT DAVEY: A large inlet on the deep southwest coastline. One of the few largely unexplored areas left in the state. It was discovered and named by Captain James Kelly in 1815; he named it after Governor Davey. It leads to what is considered almost an inland sea, Bathurst Harbour.

PORT ESPERANCE: Renamed Dover.

PORT HUON: This is a deep-water port on the Huon River, 4 Km. east of Geeveston on the Huon Highway. Originally known as Shipwrights Point the name was changed in 1965. It is an area that has always had an association with shipping because of its ideal position on the Huon River.

PORT LATTA: A place on the northwest coast 60 Km. west of Burnie on the Bass Highway. It is the Pelletising Plant and seaport for the Savage River Iron Ore. The ore is pumped through a pipeline from the mines 85 Km. as slurry.

PORT LEVEN: Renamed Ulverstone.

PORT SORELL: A holiday resort on the estuary of the Rubicon River, 19 Km. east of Devonport. It is the oldest town on the northwest coast and was used as the port for the Van Diemen's Land Company. Originally named Burgess after the Chief Police Magistrate, the name was changed to Port Sorell after Governor Sorell in 1822. The town was laid out in 1834 and was used as a place with a big trade in wattle bark.

POVERTY GULLY: A valley in the hilly district southwest of Margate - off the Upper Van Morey Road area. Like other places in the general vicinity this was mined for coal but only for a short time as the coal was of a low grade.

POWRANNA: This was a railway stop on the Main Line Railway. It was situated 12 Km. north of Epping Forest, just before the line crossed the Midlands Highway. Originally known as Snake Banks the name changed in 1913. In the coaching days it was a way station and in 1834 a windmill was listed as being near Snake Banks.

PREMAYDENA: This is a village on the Tasman Peninsula 17 Km. northwest of Port Arthur. It is a popular holiday destination and orchard district. It began as an outstation for convicts where they were used in shipbuilding and timber milling. Originally named Impression Bay and but changed before 1900.

PREOLENNA: This is a small village at the junction of the Preolenna and Meunna Roads 30 Km. south of Wynyard. It is one of the highest

points in the Flower River Valley area, situated at the top of Fagans Hill. About 1914 some coal seams were discovered there and were mined but the coal proved unsuitable.

PRESERVATION BAY: A little settlement 1 Km. west of Penguin on the Bass Highway. It was not until 1852 that selected lots were taken up and farmed. The name is taken from the bay on the coastline in front of the settlement. This bay is thought to have been named by Bass who was very impressed by its sandy beach.

PRESTON: A small rural settlement on the banks of the Leven River, 16 Km. south of Ulverstone on the Preston Road. It is a strong farming area and was on the Ulverstone Nietta Railway line.

PRESTON SOUTH: A small settlement 6 Km. south from the Preston Hamlet, it is on the South Preston Road overlooking the Preston Creek. Upper Preston Falls flows into the creek and has a special walking track to view the falls.

PRIME SEAL ISLAND: A little island in the Furneaux Group in Bass Strait. It is off the western coast of Flinders Island almost opposite Settlement Point. Discovered and named by Matthew Flinders as Hummock Island but the name was changed later to Prime Seal Island.

PRIMROSE: The northern suburb of Rosebery centred on the railway station that is called Primrose Station. It has grown to become a full suburb and has extended to the shores of Lake Pieman. The name comes from the Primrose Mine, which lies, between Primrose and Rosebery.

PRIMROSE SANDS: A holiday beach resort area 23 Km. east of Sorell. It faces onto Fredrick Henry Bay and has a good sheltered beach. The origin of the name is uncertain but French Admiral D'Entrecasteaux who named Point Renard situated at the eastern end of the beach first observed it.

PRINCE OF WALES BAY: A bay on the Derwent River north of Hobart, situated between the suburbs of Lutana and Goodwood. Sheltered with a reasonable depth of water it has a history of shipping in the Derwent River for building and anchorage.

PRINCESS RIVER: This is a small river about 17 Km. east of Queenstown, it rises in The Little Eldons and is a tributary of the King River. There is a small settlement where the river crosses the Lyell Highway.

PRIORY: A small farming settlement on the Anderson Bay Road 9 Km. north of St.Helens, situated where the road crosses the Georges River.

The district developed rapidly when tin was discovered in the area. However, the seam ran out and farming took over.

PROCTORS ROAD: An old road that linked Hobart with the Kingston area. It served as an alternative route to the Channel Highway but was replaced with the Southern Outlet. The old road is still in existence it starts in the suburb of Dynnyrne and weaves it's way around the hills south to Kingston. Originally William Proctor built the road to his property named "The Lea" and it was a number of years before it was extended through to the Kingston area.

PROMISED LAND: It is an area on the eastern side of Lake Barrington, 4 Km. south of Roland on the Starverton Road. Biblical names are a common event in the Kentish Municipality; the locals believe it suits the area.

PROSPECT: A southwestern suburb of Launceston, situated between Summerhill and Prospect Vale. It was originally a small village in the Westbury Municipality but has been absorbed into the outer Launceston area.

PROSPECT VALE: This is a Launceston suburb bordering on the eastern side by the Bass Highway. The Launceston Country Club is situated in the southwestern corner of this suburb.

PROSSER PLAINS: Renamed Buckland.

PROSSERS FOREST: A heavily timbered district northeast of Launceston - mainly in the Dido Hills. The Prossers Forest Road branches off the Patersonia Road 1 Km. north of Nunamara and goes north for 13 Km. until it joins the Lilydale Road.

PULBEENA: A railway siding on the spur line off the Western Line between Smithton and Irishtown. It is 2 Km. north of Irishtown and is where the railway line crosses the Irishtown Road.

PUNCH BOWL: A southeastern suburb of Launceston, a popular tourist attraction with the Punch Bowl Reserve. The reserve has exotic and native trees and rhododendrons set in semi-natural bushland. It was opened up in the early 1900's and called Devil's Punch Bowl.

PYENGANA: A dairy farming district 27 Km. west of St.Helens. A popular place for trout fishing and is also well known for the high quality cheese produced at Pyengana. It was started as a tin mining area but changed to farming when the tin gave out.

PYENGANA WEST: This is a small settlement that has grown around a tourist attraction. The St.Columbia Falls, on the Georges River, is situated 8 Km. west of Pyengana.



Penguin c.1910

QUAMBY BEND: An area 4 Km. north of Westbury, situated at the junction of the Plain Road and Black Lane. It gets its name from "Quamby Home" which is just south of the area and was the home of the first Tasmanian born Premier, Sir Richard Dry.

QUAMBY BROOK: A small village on the Quamby Brook Road. It is 10 Km. south of Deloraine on the banks of the stream from which it's name was taken. It was a timber-milling district with a large mill near the village. The name "Quamby" was first used in the district by Sir Richard Dry and is aboriginal for "mercy or stop".

QUEENBOROUGH: This was a name used on an early Post Office established in the Sandy Bay area about 1857. It was described as being near the tollgate.

QUEENSTOWN: This is the principle town on the rugged west coast. Like all towns on the west coast it has a history of mining. It was built when the original town of Penghana was burnt to the ground. Penghana was situated near where the junction of the Lyell and Zeehan Highways are today. The new town site for Queenstown was selected 3 Km. further down the valley and named in honour of Queen Victoria. When a census was taken in 1901 it showed that at one time it was Tasmanian's third largest town. Today it is still a mining and tourist centre with a number of good exhibits from the early mining days.

QUEENSTOWN SOUTH: The southern suburb of Queenstown that has spread along the road leading to Lynchford, on both sides of the Queen River.

QUOIBA: A small southern suburb of Devonport situated on the western bank of the Mersey River on the northern side of the Flour Mill Bay. This is where the Devonport Main Road branches off the Stony Rise Road and runs through Quoiba.



Queenstown Post Office

RADNOR: A small rural settlement on the Tasman Peninsula it is 7 Km. west of Port Arthur at the foot of Mount Arthur. The small settlement is slowly fading into history and is now mainly small farms.

RAILTON: A country town 19 Km. south of Devonport on the Latrobe Road. The main industry in the district it is the large Goliath Cement Company situated at the northern end of the town. The cement works began in 1926 as the Tasmanian Cement Company, the name changed to its present name three years later. Surveyed in 1853 by J.M. Dooley, it is the second largest town in the Kentish Municipality.

RALPHS BAY: The Ralphs Bay village was renamed Lauderdale in 1960. Ralphs Bay is the large, almost enclosed, bay on the western side of the narrow isthmus connecting the South Arm Peninsula. Originally named by Captain Hayes as Relph's Bay, the spelling was changed by 1839. Because the bay is so sheltered it is popular with fishermen and those involved in shallow water sports.

RAMSGATE: This is a small settlement at the southern end of Recherche Bay (in a smaller bay named Rocky Bay), 30 Km. south of Southport. Once a busy timber town and used also by whalers, it is now almost deserted. The Government Surveyor, Calder, gave the name after the English resort of the same name.

RAMINEA: A former settlement, which was on the Huon Highway 5 Km. south of Dover - near the mouth of the Esperance River. It was the site of a huge steam-driven sawmill. The mill worked for over a hundred years before being closed down, later, in 1974, it was burnt down. The site of the settlement does not have a road sign but its position is still marked on most maps of the area.

RANDALL'S BAY: A small community situated in a small bay on the Huon River 18 Km. south of Cygnet. Randall's Bay has a large sandy beach and is a popular place for picnics and a day's outing.

RANELAGH: A village on the Huon River 2.5 Km. upstream from Huonville, it is an orchard growing area. Formerly known as Ranelagh Junction, it was given this name because a Mr. Lucas had a property he named "Ranelagh" at Baker's Creek (later Lucaston). Lucas laid tracks so he could rail his timber from his property to Mosquito Point (later Ranelagh Junction), here it could be loaded onto ferries and shipped to Hobart. The name was attached to the place after Mr. Lucas had passed on.

RANGA: A place on Flinders Island. It is situated 11 Km. southeast of Whitemark on the Lady Barron Road; the northern side of the Strzelecki Peaks.

RANNOCH: An eastern suburb of Devonport. It is situated east of East Devonport, between the eastern end of Torquay Road and John Street.

RAPSONIA: This is not a settlement but a name used by the postal authorities in 1929-30. It was in the Launceston suburb of Inveresk and based in the premises of a tyre company. The Post Office operated for about 12 months.

RAVENNA: Changed to Ravenswood in 1968.

RAVENSDALE: A small settlement on the Tasman Highway at the junction with the Seaford Road. It is 3 Km. south of Little Swanport. It was named after a house of that name built by Lt. Hawkins, an officer at the Maria Island penal station.

RAVENSWOOD: A north eastern suburb of Launceston, once part of the now all but disappeared St.Leonards Municipality. Ravenswood is situated on the eastern side of the North Esk River. A creek that flows through the suburb is Distillery Creek; this was named because of a distillery built there in 1824 by James Tower. This distillery was in the area where Ravenswood is today.

RAYNA: A stop on the Emu Bay Railway line 4 Km. north of Zeehan. Formerly named Rayna Junction because it was at this point the Dundas Line branched off. An important station until the Dundas train stopped in 1932 then the station became Rayna.

RECHERCHE BAY: A large bay in the southeast corner of the state it is dotted with secluded coves and unspoilt beaches. It was named after one of the French ships of Admiral D'entrecasteaux who was the first European to enter the bay. A small town on the southern end of the bay was named Recherche Bay but later changed to Ramsgate.

RED GUM: A small siding on the Derwent Valley Line which disappeared about 1938 when the station at Boyer was built for the Australian Newsprint Mills.

RED HILLS: A small farming hamlet 5 Km. west of Deloraine on the Mole Creek Road. The name comes from the "Red Hills Farm" built by Mr. James Bennett. Bennett built a hotel in 1851 that became well known throughout the colony.

RED WATER CREEK: Changed to Railton.

REDLANDS: A property at Plenty on the Glenora Road 10 Km. west of New Norfolk. The Salmon Ponds, which the property backs onto, was

originally part of the property. The property granted to George Fredrick Read in 1819, he built and named it in 1825. Later, because of his interest in trout breeding he donated a part of his grant to the Association that later became the Salmon Ponds.

REDPA: A small settlement in the far northwest. This is situated 40 Km. west of Smithton, at the junction of the Comeback and Fairview Roads. Originally named Marrawah East it was changed to Redpa in the early 1920's. Redpa is an aboriginal word for "mosquito".

REEDY MARSH: A small isolated settlement 11 Km. north of Deloraine on the Larcombes Road. Some confusion arose with the name in the early days because the same name had been used on Mathinna.

REEKARA: A small place on King Island. It is 19 Km. north of Currie on the North Road. The name is said to be aboriginal for "long boat row". It is the site of the Reekara Wildlife Sanctuary, a private reserve.

REGATTA POINT: An historic wharf area in Long Bay, opposite Strahan in Risby Cove. It was built so as the trains bringing ore from the mines could take their load to the ships. Other places were tried as seaports on the west coast but failed, Regatta Point proved successful.

REIBY'S FORD: Changed to Hadspen.

REKUNA: An agricultural district 13 Km. west of Brighton on the Tea Tree Road. Originally named Upper Tea Tree, it is an area, which was settled early. There is a large old house named "Windarra" there which was built before the 1850's.

RELBIA: A farming settlement formed around a railway station on the Main Line Railway. It is 11 Km. south of Launceston on the Relbia Road. When the railway station first opened it was named Breadalbane Station but changed to its present name in 1913. It is an aboriginal word for "long-way or time".

REMINE: An isolated settlement on the west coast 22 Km. west of Zeehan (situated at Trial Harbour). The settlement grew around a landing place used in the 1880's for the mines further inland. It was mainly used for the mine at Mount Heemskirk. The settlement was first named Trial Harbour then later changed to Remine.

RENISON BELL: A tin mining town on the Murchison Highway, 44 Km. north of Queenstown. The town was late developing although the field was discovered in 1890. It was not till the 1960's that it was fully developed. Named in honour of George Renison Bell who was born at

Bothwell in 1840, he became a prospector and discovered a number of mining fields throughout Tasmania.

RETREAT: An agricultural district in the hilly elevated country north of Lebrina 15 Km. north of Lilydale. Situated on the edge of a pine plantation at the junction of the Retreat and Security Roads.

RHEBAN: An isolated place on the Rheban Road 12 Km. south of Orford, in Carrickfergus Bay. As it is on the coastline it has beautiful views of Maria Island and the Tasman Sea. James Radcliffe built the property about 1827. He tried to establish a salt works on the property but was hampered by the Government.

RHODES: A large historic property in Woolmers Lane 5 Km east of Longford. It was first owned by Commissary Thomas Walker who arrived in the colony in 1817.

RHYNDASTON: A settlement on the Rhyndaston Road 7 Km. north of Colebrook. It is a place well known for the railway tunnel that runs through the hill there. The station was used in the days of steam to take on water. The water there is said to be the purest in Tasmania. Originally the settlement was named Flat Top Hill but when the railway was put through it was changed to Rhyndaston. It is believed Charles Meredith named it because it is Welsh for "mouth of the hole".

RIALANNAH: This was the name used by the postal authorities for the Post Office on Mount Nelson until it was renamed Mount Nelson in 1957.

RIANA: A small rural town 13 Km. south of Penguin, situated on the junction of Pine and Stotts Road. A settlement, which was started by loggers and cutters then slowly, it turned to farming. The name is aboriginal for "white man".

RIANA SOUTH: This is a small rural settlement 18 Km. south of Penguin on the junction of Pine Road and Masters Road. Another place, which started as a base camp for loggers and cutters, then became rural.

RICHMOND: A very historic town 24 Km. east of Hobart in the Coal River Valley. The town is very historic because almost every building in the town has some historical value. The convict heritage pre-dates that of Port Arthur with the Richmond Gaol being built in 1825. It was first mentioned in 1803 when Lieutenant Bowen's party discovered coal there. The Richmond Bridge that spans the Coal River is Australia's oldest bridge it was built in 1823. It was named by Governor William Sorell in

1824 after the property, "Richmond Park", which was owned by David Lord.

RICHMOND HILL: An orchard district in the West Tamar Region 16 Km north of Exeter. It faces onto the Tamar River about 2 Km. north of the Batman Bridge where the river swings west.

RIDGEWAY: This is a small place on the side of Mount Wellington about 8 Km. from Hobart. It is situated near the junction of Chimney Pot Hill Road and Ridgeway Road. The Ridgeway Park panoramic views of Hobart and is a popular place for picnics. It is shown on maps as early as 1837 it overlooks the Waterworks Reserve.

RIDGLEY: A town 13 Km. south of Burnie on Mount Road. Situated just below the junction with West Moorville Road it is now a quiet little farming town. Built by the Van Diemen's Land Company it is close to the popular Guide Falls on the Guide River. The town played an important part in the building of what is now the Emu Bay Railway. The railway station is still in use was built by the Van Diemen's Land Company. It was named by Henry Hellyer in the late 1820's.

RIDGLEY WEST: A Small settlement 5 Km. west of Ridgley at the junction of the West Ridgley and Prospect Roads. Access to the picnic ground and walking track to Guide Falls and other falls are reached off the West Ridgley Road.

RINADEENA: This was a railway station on the Government run Queenstown Regatta Point Line. It was about 9 Km. south of Queenstown where the line comes to the Lyell Highway, linked by a short access road.

RINGAROOMA: A country town in the northeast 21 Km. southeast of Scottsdale with a strong dairy farming and timber industry. James Scott named the town in the 1840's. It has gone through some mining booms but has always come back to farming and timber. Originally a place on the Ringarooma River (on the north-east) was to have had this name.

RINGAROOMA ROAD STATION: Renamed Legerwood in 1918.

RINGVILLE: A small place that was on the west coast 2 Km. west of Williamsford near the Ring River. It was a mining boomtown on the North East Dundas Tram Line. The trip was popular because it passed the spectacular Montezuma Falls.

RISDON: This is a suburb of Hobart on the eastern shore of the Derwent River about 3 Km up river from Hobart. It is thought to be on both sides of the river, as some believe that the Electrolytic Zinc Works are sited at Risdon. This came about because a cable-drawn punt known as the

"Risdon Punt" crossed the river at this point. The name is from Risdon Cove and this was named by Captain John Hayes in 1794 after the second in command of the "Duke of Clarence", one of two ships in the expedition, the suburb name came from there.

RISDON EAST: An area on the eastern side of the Risdon housing estate. It takes in the East Risdon Nature Reserve, which is a largely unspoilt area on the riverside of the Government Hills. On the river the reserve is from Porter Bay to Shag Bay and takes in the well-known Bedlam Walls.

RISDON RISE: Renamed to Lutana.

RISDON VALE: A housing estate situated in the valley between Sugarloaf Hill and Blacksmiths Hill, part of the Meehan Range. The estate was built by the Housing Department in the late 1950's, where the Risdon Gaol is sited.

RIVER PLENTY: Altered to Plenty.

RIVERSDALE: This was a large property on the Tasman Highway. This is situated 8 Km. north of Swansea where the highway crosses the Wye River. The estate was built by John Amos then bought by George Meredith, who built a large mill, which is still standing.

RIVERSIDE: An outer northwestern suburb of Launceston. It is situated chiefly on the eastern side of the West Tamar Highway, opposite West Riverside. The Tamar River borders the eastern side of the Riverside, and is a marshy area.

RIVERSIDE NORTH: An outer northwestern suburb of Launceston, it is the northern most suburbs on the West Tamar, and runs chiefly along the West Tamar Highway.

RIVERSIDE WEST: A Launceston suburb on the western side of the West Tamar Highway, it is separated from Riverside by the West Tamar Highway. Formerly known as Marawaylee it was renamed Riverside West in 1960.

RIVERTON: A siding on the Derwent Valley Line 8 Km. east of New Norfolk, close to the Boyer Road. It was used for passengers as required, but with the down grade in the rail system became obsolete.

ROARING BEACH: A small settlement on the western side of the Tasman Peninsula, 7 Km. northwest of Nubeena. It is a popular surfing beach. It was named because of the noise of the waves; the Roaring Beach Coastal Reserve is in this area.

ROBBINS ISLAND: An island off the northwest coast separated only by the narrow strip of water Robbins Passage. The island is 9,748 hectares and has a history of farming. It was named after Charles Robbins, R.N., who sailed through Bass Strait in 1804 in the ship "Integrity". Prior to this, it was used by sealers and known as Sandy Island, and was part of the Van Diemen's Land Co. grant.

ROBIGANA: Renamed Paper Beach in 1968.

ROCHERLEA: A northeastern suburb of Launceston. The area stretches from the junction of the Lilydale Road and the East Tamar Highway and along the Lilydale Road for some distance. Formerly known as Roches Lane the railway station, on the North Eastern Line, was an important station.

ROACHES BEACH: An eastern suburb of Hobart. The Roaches Beach settlement is north of Lauderdale. However, the beach itself is on the eastern side of Lauderdale and is a popular recreation area facing out into Fredrick Henry Bay.

ROCKS: An area on the Boyer Road just outside the town boundary of New Norfolk. It is named because of the imposing rock formation on the northern side of the road. The road and rail runs between the sheer rock face and the river. The main rock is known as Pulpit Rock and is often climbed for a splendid view.

ROCKY CAPE: A small farming town on the Bass Highway, 47 Km. west of Burnie. Much of the area of Rocky Cape is now a National Park. Its name is taken from the point of land 5 Km. north, named by Matthew Flinders in 1798.

ROCKY HILLS: This was a convict Probation Station about 11 Km. south of Swansea on the eastern side of the Tasman Highway. The convicts did roadwork in the area and built a bridge known as Spiky Bridge situated about 4 Km. north of the Rocky Hills Probation Station site.

ROGER RIVER: A small settlement that was late in being settled. It is situated at the junction of the Roger River and Brodies Roads 20 Km. south of Smithton. It has been a timber milling and logging area from its earliest days. The postal authorities made a move to change the name to Rodgerton in 1978 but were not successful.

ROGER RIVER WEST: A small settlement on the Roger River Road where it crosses the Spinks Creek, 6 Km. south-west of the Roger River

village. The settlement grew around the Mackay's Sawmill. When the Post Office first opened in 1928 it was based in Mackay's Sawmill.

ROKEBY: An eastern suburb of Hobart, which was a small village until the Housing Department built a large housing estate there in the 1970's. James Blackburn designed the St. Matthews Anglican Church, dating from about the 1840's. Tasmania's first clergyman, the Reverend Robert (Bobby) Knopwood, is buried in the grounds of this church. The first export shipment of apples was grown at Rokeby, originally known as Clarence Plains. It is named after "Rokeby House" which was built by George Stokell in 1830, in honour of a village in Yorkshire, England.

ROLAND: A rural village on the Staverton Road 9 Km. south of Sheffield. It was the railhead of a line that branched off the Main Line at Railton. The name of the village changed several times. From 1915-1917 it was known as Staverton Railway, then it changed to Dasher until 1919, after that it became Roland. It was named in honour of Captain Rolland an early explorer in the district. Somewhere in time one "l" has been dropped from the name.

ROMAINE HEIGHTS: A southern suburb of Burnie on the elevated area of Old Surrey Road. It is an area used by the Van Diemen's Land Company as can be seen in the Street names. One is named Three Mile Line Road, a road that links Mount Road and Moorville Road.

ROOKERY (THE): A property at the western end of Rookery Road. It is situated 11 Km. south of Beaconsfield at the northern base of Stewarts Hill via the Flowery Gully Road.

ROSE BAY: An eastern suburb of Hobart. It is situated on the northern side of the Tasman Bridge, along shores of the Derwent River. The origin of the name is not known but it was taken from the small bay on the Derwent River.

ROSEBERY: A mining town on the Murchison Highway 55 Km. north of Queenstown. The town has a population of around 3,000 and the main employer is the Electrolytic Zinc Company. The name is taken from a mine pegged out in 1893 by Tom McDonald. He named it the Rosebery Gold Mining Company after the Prime Minister of England, Lord Rosebery.

ROSEGARLAND: A place on the Lyell Highway 17 Km. west of New Norfolk. It was once a popular place for travellers to rest on their travels. Its name is said to have come from the property "Rosegarland House", the name has often been described as the prettiest in Tasmania.

ROSETTA: This is a small suburb of Hobart on the northern side of Montrose. It is generally accepted that the name is after "Rosetta Cottage", a privately run school around the 1820's.

ROSES TIER: A small isolated district on the northern side of Ben Lomond 25 Km. east of Upper Blessington. It was a formerly settlement, which grew around a busy sawmill. A telegraph station operated there from 1954 to 1964.

ROSEVALE: A farming district in the West Tamar Region 24 Km. north of Westbury. It is situated on the Roseburn Road with about 8 farms in the area.

ROSEVEARS: A farming district in the West Tamar area 7 Km. south of Exeter. It overlooks the Tamar River just south of Cimitiere Point on the Rosevears Road. It was named after a family who settled there in the early days of the colony.

ROSNY: This is a small eastern suburb of Hobart on the banks of the Derwent River. The suburb spreads around the western slopes of Rosny Hill. The name is taken from Rosny Point, originally named Canadian Point; however, it was changed to Rosny after an ancestor of Walter Bethune, who was granted the land in 1820.

ROSNY PARK: A suburb of Hobart on the eastern side of Rosny, it covers the Rosny Park Public Golf Course and the Eastlands Shopping centre.

ROSS: An historical village .5 Km. off the Midlands Highway 120 Km. north of Hobart. It is a popular place for tourists because, like some other towns in the state, most of the buildings in the village are of some historical value. The town was named by Governor Lachlan Macquarie in 1821; he named it after the seat of his friend H.M. Buchanan on Loch Lomond in Scotland. The pride of Ross is the Ross Bridge. Built on the orders of Governor Arthur it was designed by John Lee Archer and opened in October 1836.

ROSSARDEN: A mining town in the foothills of Ben Lomond 13 Km. north of Avoca. Once a busy mining town it closed down when the mine became uneconomic to work. The Storys Creek flows just north of the town.

ROSTREVOR: This is a small farming area on the Tasman Highway 2 Km. north of Triabunna. The name comes from historic "Rostrevor House" on the western side of the highway. The original stables which are still standing come and are under the care of the National Trust.

ROUND HILL: A popular tourist spot on the eastern side of Burnie in the suburb of Wivenhoe. Popular because of the good view from the top of the hill, it is 240m high. The history of the hill predates settlement when George Bass sighted it.

ROUSE'S CORNER: A place on the Waratah Road 4 Km. east of Waratah. Now deserted it was once part of the mining activities. There is an interesting cemetery in the area. Originally named Rouse's Camp, the railway station on the Waratah Branch Line was built in 1918 and named Dunkley's Siding.

ROWALLAN: A power station on the Mersey River 38 Km. south of Mole Creek. This is the southern most power station on the Mersey Forth Scheme and is named after a former Governor of Tasmania. The power station was commissioned in 1968.

ROWELLA: A small settlement in the West Tamar Region 13 Km. east of Beaconsfield. This was once the home of George Collins, born on Norfolk Island who was the son of Governor David Collins. His house was named "Waterton Hall" and is in the old Point Rapid District.

ROYAL GEORGE: A former mining settlement 15 Km. southeast of Avoca. It was a mining boomtown started in the late 1890's and reached its peak around 1920. It is thought the tin ore first discovered there in 1828, was the first tin discovered in Australia.

ROYENRINE: This was a name used at original settlement where the present day settlement of Corinna. It is unclear whether it was ever official.

RUBICON: A large property situated on the banks of the Rubicon River 1 Km. south of Elizabeth Town on the Bass Highway. It was originally the property of Mr. Bonnilly, a prominent official in organizing work on clearing and building roads in the district.

RUBICON RIVER: A river that rises in the foothills of the Great Western Tiers, it flows north through some very lush farmlands into its estuary at Port Sorell. When it was first discovered it was named the First Western River - meaning it was the first river west of the Tamar River.

RUBY FLATS: A former mining area 2 Km. south of Branxholm on the Ruby Flats Road where it runs along the banks of the Ringarooma River. The Ruby Flats Tin Mine operated in this area and was one of the most important mines in the Branxholm area.

RULLA: A small rural district 1 Km. west of Sisters Creek on the Bass Highway. Rulla once had its own Post Office but today it is a place very

hard to find. The name is still in the area as the Rulla Creek flows under the Bass Highway near the junction with Watts Road.

RUMLEY: This was a siding on the Derwent Valley Line about 6 Km. west of Glenora. However, like most of the sidings on this line, it has now disappeared.

RUMNEY'S HUTS: Renamed Baden.

RUNNYMEDE: A farming district on the Tasman Highway 20 Km. north of Sorell. Formerly named Brushy Plains; the present name is said to have been given by a settler who thought he was working for a better future and named it Runnymede after the place near where King John signed the Magna Carta.

RUSHY LAGOON: A small settlement around a marshy lagoon of the same name 23 Km. east of Oatlands. It is situated at the junction of the Lemont and Inglewood Roads.

RUSSEL: Renamed Westerway about 1919.

RUSSEL RIVER: This River rises on the Snowy North in the Snowy Ranges behind Maydena. It flows south down through Lonnavale and onto the Huon River of which it is a tributary. It is a river often confused with the Tyenna River because the Russel Falls are on the Tyenna River.

RUTLAND: A small isolated farming district 9 Km. west of Jericho on the upper reaches of the Jordan River. There was a telegraph office operating at Rutland until 1965.



Raminea Mill 1895

SAGGY FLATS: Renamed Strickland.

SALISBURY: This is a place on the West Tamar Highway about 3 Km. south of Beaconsfield - on the eastern side of Salisbury Hill. It was once an important place in the area, a Post Office was opened there in 1884.

SALMON PONDS: Situated on the Glenora Road 8 Km. west of New Norfolk - just before Plenty. Salmon Ponds is on 3 acres of land donated by the family of George F. Read, part was of their Redlands property. The first rainbow and brown trout to be raised in the Southern Hemisphere was at the Salmon Ponds in 1864.

SALTWATER RIVER: A small holiday village on the Tasman Peninsula 27 Km. west of Eaglehawk Neck. It was once the site of two convict out-stations of Port Arthur Penal Settlement. The agricultural station was where the village is today and the other was 6 Km. to the north known as the Slopem Main Coal Mines. The convicts considered the coalmines "hell on earth". Some of the structures still remain today and are a popular tourist attraction.

SANDFLY: A mixed farming community just off the Southern Outlet 10 Km. south of Kingston. The main part of the community is near the junction of the Sandfly Road and the Southern Outlet.

SANDFORD: A place on the South Arm Road 16 Km. from Bellerive it is chiefly a rural area. Originally known as Muddy Plains it was changed to Sandford in 1886 after the then Bishop of Tasmania, the Right Reverend D. Fox Sandford.

SANDHILL: An outer suburb of Launceston situated on the southern side of South Launceston. A tourist attraction in Sandhill is the Tamar Knitting Mills; tourists have the opportunity to see cloth being knitted on new and old machinery.

SANDY BAY: This is a southern suburb of Hobart on the shores of the Derwent River. Australia's first legal casino is situated there. It was named by the Reverend Robert (Bobby) Knopwood, who is said to have applied the name descriptively. He first mentioned it in his diary in 1804.

SANDY BAY LOWER: This is on the southern side of Sandy Bay and takes in the beach from which the name originated. It has always been a popular place for recreation from the earliest times. First named Lower Sandy Bay then it changed to Beachside, and then in 1968 it was changed again to its present name.

SASSAFRAS: A rich farming district on the Bass Highway 19 Km. south of Devonport. Settled about 1857 it was very thick with sassafras trees and it is thought that this gave it its name.

SASSAFRAS EAST: A rich farming district 6 Km. east of Sassafras on the East Sassafras Road. This area was settled later than Sassafras because it was so thickly wooded and took a long time to clear.

SATELLITE ISLAND: This is a small island in the D'Entrecasteaux Channel about 2 Km. off the western shores of Bruny Island almost opposite Alannah. Charted by French Admiral D'Entrecasteaux in 1792 as Satellite Island it was known as Woody Island. However, the true Woody Island is in Norfolk Bay.

SAUNDRIDGE: An isolated property 14 Km. southwest of Cressy on the Saundridge Road. His father, William Archer, built the house, "Saundridge House", in the 1850's for Robert Archer from a design.

SAVAGE RIVER: A small settlement in an isolated area of the west coast, 38 Km. south of Waratah on the Corinna Road. It houses the workers for the mine 2 Km. north of the hamlet. Iron ore is mined, turned into slurry and then pumped to Port Latta on the coast for finishing and shipping.

SCAMANDER: This is a popular resort town at the mouth of the Scamander River. It is situated on the east coast 19 Km. north of St.Marys on the Tasman Highway. It is a place suited to all types of recreation. It is believed to have been named by George Franklin who was a scholar with an interest in Greek culture.

SCAMANDER UPPER: A place 9 Km. west of Scamander on the banks of the Scamander River. It is situated where the Upper Scamander Road crosses the river and becomes Eastern Creek Road.

SCHOUTEN ISLAND: An island off the southern end of the Freycinet Peninsula. The island was discovered and named by Abel Tasman in 1642 after a fellow countryman who was the first sailor to sail around Cape Horn.

SCONE: A large pastoral estate 1.5 Km. off the Midlands Highway and 1 Km. south of Perth. Originally part of Captain Richie's estate, on which William Gibson built "Scone House". "Scone House" is now the "Eskliegh Home" and is used as a hospital - the present Scone property is west of the hospital.

SCOPUS: A small rural place on the Montagu Road 9 Km. west of Smithton. It is a cattle and dairy farming area mainly on the northern side of the road.

SCOTCHTOWN: This is a rural area on the northwest coast which starts about 3 Km. south of Smithton. It bounds Scotchtown Road for 7 Km. past Pokes and Ollingtons Hills.

SCOTTS PEAK DAM: This is the southern most dam in Lake Pedder, situated on the upper reaches of the Huon River. It was named after Scotts Peak, which was part of the Franklin Range and is now a small island in the lake near the dam.

SCOTTSDALE: A substantial town on the Tasman Highway 63 Km. east of Launceston. Scottsdale is regarded as the centre of the north-east and named after Government Surveyor, James Scott, who explored the north-east in 1855 first known as Cox's Paradise after a farmer selected a large area to farm there. The first official name was Ellesmere however it was changed to its present name in 1893.

SCOTTSDALE NORTH: This is 5 Km. northeast of Scottsdale at the northern end of the North Scottsdale Road. It was formerly known as Bungana an aboriginal word for "chief". The name was changed to Scottsdale North in 1957.

SCOTTSDALE WEST: A small farming community 8 Km. west of Scottsdale. It is situated on the Koomeela Road and the western side of the Brid River. Formerly known as Koomeela the name changed in 1957.

SEA ELEPHANT: A place situated on the east coast of King Island at the mouth of the Sea Elephant River. The name comes from Sea Elephant Bay that is on the Southern side of the hamlet. It was here that Lieutenant Robbins came ashore in 1802 to claim the island for the British Empire.

SEABROOK: A small outer suburb of Wynyard. It is situated east of the township on the southern side of the Old Bass Highway. The name was taken from Seabrook Creek that is on the eastern side of the Seabrook Golf Club.

SEAFORD POINT: This is a point at the mouth of the Little Swanport inlet. It forms the eastern side of the mouth. The Seaford Road branches off the Tasman Highway at Ravenswood and goes 7 Km. before ending at Seaford Point.

SEATON: A town reserve that was planned but not completed. It was planned for the east coast 17 Km. north of St.Helens on The Gardens

Road. Planned in Governor Arthur's time, the name has been preserved in the area with a small cove and a creek with the name Seaton.

SELBOURNE: A small farming district 14 Km. north of Westbury on the Selbourne Road, at the junction of the Four Springs Road. It is in some very rich farmland on the northern side of the Meander River.

SERPENTINE DAM: A dam in the Gordon Catchment it is one of three dams that help form Lake Pedder. Built on the Serpentine River above its junction with the Gordon River, it is about 12 Km. west of Strathgordon.

SETTLEMENT POINT: A prominent point on the western coast of Flinders Island 5 Km. west of Emita. It was on Settlement Point that the aboriginal settlement Wybalenna was made. The small bay was used as a landing place for sailing vessels.

SETTLEMENT (THE): A place on the walking track beside the Florentine River, 3 Km. west of the Florentine Road. The walking track goes north, south and east from The Settlement.

SEVEN MILE BEACH: A village 17 Km. east of Bellerive. It is on the western most end of a long beach that faces onto Fredrick Henry Bay. Most of Seven Mile Beach is a protected area on the southeastern side of the Hobart Airport.

SEYMOUR: A little place on the Tasman Highway 26 Km. south of St. Marys. Now it is little more than a signpost on the side of the road. There was once a coalmine at Seymour with a tramway to connect it to Warb's Harbour and ship the coal through.

SHANNON: This is a small settlement that grew around the first electric power station built in the Great Lake area. It is 12 Km. north of Waddamana on the Barron Plains Road. Although there are a few houses still at Shannon the power station is now closed down.

SHARKS POINT: A point of land in Pitt Water 6 Km. west of Sorell. It was on this point the Bellerive Sorell railway line ran until it was closed down. It is a farming area; the road runs through to Sorell following the route of the railway.

SHARPS SIDING: This was a siding on the Derwent Valley Line. Situated 4 Km. west of National Park, where the Sharps Creek enters the Tyenna River; beside the Gordon River Road.

SHEARWATER: A resort area at the northern end of Port Sorell halfway between Port Sorell and Hawley Beach. It became prominent when the Shearwater Country Club was built there.

SHEEPWASH: The settlement of Sheepwash has now disappeared. It was in Sheepwash Bay on southern Bruny Island about 4 Km. north of Alonnah. The name was derived from a custom to wash sheep in the bay after shearing. The small settlement was also used as a terminus for a ferry service between South Bruny Island and Gordon.

SHEFFIELD: A country town in the northwest area 11 Km. west of Railton. It is the administrative centre for the Kentish District. The town started in 1862 and, although there are several versions, it seems most likely named by, Edward Curr, the Tasmanian Manager for the Van Diemen's Land Company.

SHELLY BEACH: This is a holiday beach area 2 Km. from the Orford Township, just off the Rheban Road. It is a popular recreation area; the beach is sheltered and looks out into Prosser Bay.

SHELSTONE: A planned settlement that was to have been on the Grasstree Hill Road, about 5 Km. west of Richmond. When it was planned the road was the main access road to the east coast. It was surveyed and laid out but never settled.

SHEPTON MONTACUTE: Renamed Dysart.

SHERBURB PARK: A sports ground at the end of Roslyn Ave in the southern Hobart suburb of Blackmans Bay. It is situated where Tinderbox Road East and Brightwater Road begin.

SHERWOOD: This was an area on the western side of Latrobe and the Mersey River. It became known as Sherwood after Thomas Jonston built his home, "Sherwood Hall", about 1851-2.

SHERWOOD: An elevated housing estate in the Hobart suburb of Lindisfarne - on the top slopes of Pilchers Hill. All the street names in the area are after characters from the Robin Hood Story.

SHIPWRIGHTS POINT: The settlement of Shipwrights Point is now named Port Huon but Shipwrights Point is still used on the point at the northern side of the entrance to Hospital Bay. Named because of boat building in the district, it was well known up to the late 1960's for regattas.

SHONES CORNER: The road junction of East Derwent Highway and Grass Tree Hill Road ends at this point and becomes the East Derwent Highway. It is close to the present site of the Risdon Prison.

SHOREWELL: A southwestern suburb of Burnie bordered by Moorville Road and the Shorewell Creek. It is believed to have been named by the Van Diemen's Land Company.

SHOT TOWER: This is one of Tasmania's most historic landmarks. It is situated 11 Km. from Hobart in the suburb of Tarooma on the Channel Highway. The residence dates from 1835 and the tower were completed by Joseph Moir in 1870.

SIDMOUTH: A town in the West Tamar Region 36 Km. north of Launceston. It is near the junction of the Batman Highway and the Rowella Road. Sidmouth is well known for the church building, "Auld Kirk", which was built by convict and free labour in 1846.

SILLWOOD: An old property on the banks of the Meander River with an access road 4 Km. west of Carrick on the Bass Highway. The access road is about 2 Km. long.

SILVER BELL SIDING: This was a railway siding on the Government Run Strahan Zeehan Line and was 2 Km. west of Zeehan. A branch line to the Oonah smelters was built from this siding in 1909 but was shut down when the smelters closed 10 years later.

SIMPSONS BAY: A place on southern end of Bruny Island. Situated 8 Km. north of Alonnah in Isthmus Bay the settlement is about halfway up the bay near the jetty. The name is taken from Simpsons Point, which is at northern end of the bay. Marked on a map by James Sprent in 1858 it had many different names given by explorers before finally settling on Simpsons Bay.

SISTERS BEACH: A popular holiday, beach area 9 Km. west of Boat Harbour it is accessed via Boat Harbour and the Port Road. It was named because it is at the mouth of Sisters Creek. The road into the area passes two hills named, The Two Sisters, they are part of the Rocky Cape National Park.

SISTERS CREEK: This is a farming district on the Bass Highway 6 Km. west of Boat Harbour. Situated on a creek of the same name it was a district very late in developing.

SISTER ISLANDS: These are two small islands off the northern end of Flinders Island. Sometimes they are marked as Outer Sister and Inner Sister, other times, as West Sister and East Sister.

SLOPEN MAIN BEACH: This is a large, popular recreation and fishing beach on the Tasman Peninsula 33 Km. northwest of Port Arthur. The

name was adopted from the island north of the beach and called Slopen Island by Matthew Flinders.

SMITHTON: A town on the northwest coast it is the commercial and industrial centre of the Circular Head district. It is situated 86 Km. west of Burnie at the mouth of the Duck River. Named by Bass and Flinders in 1798 the early settlement was known as Duck River. One of the largest hardwood mills in Australia is at Smithton it specialises in blackwood timbers, once very thick in the area. The town name changed to Smithton before 1900 and this was after an early settler named Peter Smith.

SMOKERS BANK: A name given to the road junction of the Bass Highway and the Irishtown Road, it is 3 Km. south of Smithton.

SNAKE BANKS: Renamed Powranna.

SNAKE PLAINS: Renamed Glendevie in 1923.

SNUG: A town situated on the Channel Highway 25 Km. south of Hobart. It was proclaimed a town in 1908. The name is believed to have come from sailors who found 'snug' anchorage for their ships. Blocks of freestone cut from the quarry nearby were used in the building of the Melbourne G.P.O.

SNUG TIERS: This is the mountainous range west of Snug. It is a heavily timbered area of rain forest vegetation. At the southern end of the tiers are the Snug Falls.

SOMERSET: A town situated on the Bass Highway 6 Km. west of Burnie and the Cam River. At one time it was a town in its own right but is now a satellite town of Burnie. It was named in 1856 after the Earl of Somerset in England. The junction of the Bass Highway and the Murchison Highway is in the centre of Somerset. The postal authorities had the name River Cam on the Post Office until 1933.

SOMMERS BAY: A small bay looking out into Norfolk Bay on the Forestier Peninsula 7 Km. west of Murdunna. It is a sheltered bay along the Sommers Bay Road as far as Chronicle Point.

SORELL: A country town 27 Km. east of Hobart on the Arthur Highway, where the Arthur Highway and the Tasman Highway meet. It was named after Lieutenant Governor Sorell who founded the town in 1821. In 1824 the bushranger Matthew Brady captured the whole town. From 1816 until 1860 it was the granary of Tasmania (20 years of that for New South Wales). When the Sorell Causeway was completed in 1866 it became even more important as it gave an alternative route to the one through Richmond.

SORELL CREEK: A place on the Lyell Highway 15 Km. west of Granton, at the junction with the Molesworth Road. It overlooks the Derwent River, opposite the Australian Newsprint Mills. The small creek that it takes its name was named after Lieutenant Governor Sorell.

SOUTH ARM: This is a small village on the peninsula from which it takes its name and is 19 Km from Lauderdale. It was an important place when there was a lot of trading on the waterways in the southeast region. One of the ferries, which were common on the Derwent River, bore the aboriginal name for the area and that was "Reemere".

SOUTH BRIDGEWATER: Renamed Granton.

SOUTH BURNIE: An industrial suburb of Burnie. It is situated southwest of the city and dominated by the large A.P.P.M. Paper Mills, which start on the western bank of the Emu River and go almost the length of the suburb.

SOUTH MOUNT CAMERON: A former mining town 10 Km. south of Gladstone on the Gladstone Road. This was a tin-mining area with the Endurance Mine 1.5 Km. north of the settlement. The mine was one of its most important features but it is now a favoured place for lapidaries to hunt for stones.

SOUTHBRIDGE: A suburb of Huonville it is situated on the southern side of the Huonville Bridge. The name of the suburb has been given descriptively.

SOUTHPORT: This is a seaside resort area in the Huon district 103 Km. south of Hobart. As well as being a harbour for a fishing fleet it has splendid beaches for swimming and picnics. It is one of the oldest settlements in the area, first named Mussel Bay by French Admiral D'Entrecasteaux it was later changed to Southport. In 1895 the name was changed to Hythe and then reverted in 1969. Before the turn of the century it was one of the main towns in the timber trade.

SPALFORD: A small rural district 9 Km. south of Ulverstone on the Castra Road. It is situated just below the junction with the Clerke Plains Road. The original settler in the district, a native of Spalford, England gave the name.

SPIKY BRIDGE: A convict built bridge 10 Km. south of Swansea on the eastern side of the Tasman Highway. Convicts from the Rocky Hills Probation Station built it, unfortunately most of the history of the bridge was never recorded.

SPRENT: A farming district 14 Km. south of Ulverstone on the Castra Road. The main settlement part of Sprent was planned to be the township of Eden, but this was never to happen. Once it had a coffee palace, which was popular in the horse and buggy days with travellers.

SPREYTON: A satellite town of Devonport 6 Km. south on the Mersey Main Road runs parallel with the Northwestern railway line. The Figure of Eight Creek flows through the town. Where the creek flows into the Mersey River at Flour Mill Bay there once stood a tidal-powered flourmill.

SPRING BAY: Changed to Triabunna.

SPRING BAY: Triabunna is situated in this is the large bay. The bay is deep enough for sea-going cargo ships to manoeuvre in and tie up at the woodchip mill at the mouth of Spring Bay. Visited by Baudin in 1802, he named it Port Montbazin, but his alternative name of Spring Bay was more generally accepted.

SPRING BEACH: This is a popular beach area on the Rheban Road 4 Km. south of Orford. The beach is an open beach with white sand and is a popular place for surfing.

SPRING HILL: A hill on the Midlands Highway. It is the highest point on the highway and, although the highway has been moved and rebuilt several times, it still follows the original route surveyed by Meehan in the very early 1800's. The top of Spring Hill is about 11 Km. north of Melton Mowbray. It was named by hunters who discovered a permanent spring there in the very early period.

SPRINGDALE: A mixed farming district, 3 Km. west of Collinsvale on a ring road, which also passes through Fairy Glen. This was a saw-milling place in the Myrtle Forest that covers the area.

SPRINGFIELD: A farming village on the Tasman Highway 55 Km. east of Launceston. It is an area well known for quality dairy products. When first settled it was a saw milling and timber area then slowly turned to farming.

SPRINGFIELD (MOONAH): See West Moonah.

SPRINGFIELD SOUTH: A farming district 9 Km. south of Springfield. It is situated at the junction of the South Springfield Road and the Ten Mile Track in the foothills of Mount Maurice. It was an area slow to develop because it was so thickly wooded.

SPRINGHILL BOTTOM: A quiet farming district on the Native Corners Road. It is 16 Km. north of Campania, at the northern end of Postboy Hill overlooking the Jerusalem Creek. In the very early days the road was the main link to the Midlands Highway. John Vincent had an inn at Springhill Bottom, which prospered for many years, catering for weary travellers.

SPRINGS (THE): This was a resort building on the slopes of Mount Wellington, 5 Km. from Fern Tree on the Pinnacle Road. The first building was built about 1870, replaced about 1890. It was popular with tourists and travellers as a resting place until it was burnt down in the 1967 bushfires.

SQUEAKING POINT: A point in Port Sorell 2 Km. south of the Port Sorell town. The history of the point dates back almost to the days of the first settlement. It was named because some piglets escaped from a ship tied up at the point. When the crew rounded up the pigs they created a lot of squeaking.

St. AUBYNS: A name given to a planned town site at the head of Noland Bay at West Sandy Point, however it was never completed. The name is preserved in St. Aubyns Bay, which is between Noland Bay and Andersons Bay. Later the name was applied to a small settlement at the top of Ben Lomond, but this proved unsuitable.

St. HELENS: A popular holiday and fishing town on the east coast. It is 164 Km. east of Launceston via the Tasman Highway and Scottsdale. The seat of local government, the town had its beginnings about 1834 as a fishing village. It was named by Captain Furneaux after a town of the same name on the Isle of Wright, England.

St. LEONARDS: This is now a suburb of Launceston on the eastern side of the North Esk River. First opened up in 1806 for pasture it was named Patterson's Plains. In 1866, it was proclaimed a town and named after Lord St. Leonards.

St. MARYS: A sleepy little country town on the east coast 129 Km. from Launceston. Once it was a very busy place. It is the eastern terminus for the busy Fingal Railway and is where the junction of the Esk Highway and the Tasman Highway situated.

St. MARYS PLAINS: Renamed Tewksbury in 1918.

St. MICHAEL'S: This was formerly Muddy Creek in the west Tamar region. It reverted back to its original name before the settlement eventually disappeared.

St. PATRICKS RIVER: A small farming settlement on the Tasman Highway, 35 Km. east of Launceston. Situated on the St. Patricks River, which, in the early days of settlement, was the source of the Launceston water supply.

St. PAULS PLAINS: Changed to Avoca.

St. PETERS PASS: This is the name of a property and a section of the Midlands Highway, 9 Km. north of Oatlands. Sergeant Daniel O'Connor who arrived in the Oatlands district about 1830 named the property. O'Connor had been brought to the district to help erect buildings, later he bought the property and named it. The section of the highway gets its name from the property.

STANLEY: A classified historic town on the northwest coast 78 Km. west of Burnie. It is chiefly a fishing village. The Van Diemen's Land Company once had its headquarters in the area and is also the birthplace of former Australian Prime Minister Joseph Lyons. Over the years the village has not changed very much. It was named after Lord Stanley, who was the Secretary of State for the Colonies.

STANMORE: A district 4 Km. north of Dover. Situated around the area of Stanmore Hill that is one of the foothills of Mount Esperance.

STAVERTON: This is a little farming community on the Staverton Road 15 Km. southwest of Sheffield. It overlooks the section of Lake Barrington known as Weeks Reach. An isolated settlement, an early settler reported that in 1906 it took 3 hours to get to Railton. He travelled by horse to Roland and then by rail.

STELLA: This was a small siding on the Government run Strahan - Zeehan railway line, 4 Km. north of Strahan. It was used only as required.

STEPHEN'S BRIDGE: A siding on the Derwent Valley Line, 4 Km. west of National Park. The name was changed to Sharpes Siding.

STEPPE (THE): A small place on the Lake Highway. It is situated 19 Km. north of Bothwell at the junction with the Interlaken Road. The best-known pioneer of the Steppes was Mr. James Wilson who was one of the people responsible for the establishment of trout in the Great Lake area.

STEWARTS BAY: A resort area on the Tasman Peninsula. It is on the northern side of the Port Arthur settlement in the Stewarts Bay State Reserve. Situated in a bay of the same name, (a small bay in Port Arthur) the small settlement is used as a holiday village.

STIEGLITZ: A settlement on the St. Helens Point Road, 5 Km. off the Tasman Highway. It is a holiday resort with a group of holiday units. The name comes from the Von Stieglitz family who were very important pioneers in the St. Helens district.

STIRLING: Changed to Ridgley.

STONEHENGE: An isolated farming district 31 Km. east of Oatlands on the Eastern Marshes Road. It was named by Samuel Page, an early settler in the district. Page was the proprietor of a coach line and a large landowner.

STONER: A farming village 16 Km. southeast of Oatlands near the junction of the Stoner and Black Gate Roads. It was named in 1892 after Alan C. Stoner who was the Crown Solicitor for Van Diemen's Land. When the Mainline Railway was built through the area a station was made at Stoner.

STONY HUT PLAINS: Changed to Gretna.

STONY RISE: A suburb of Devonport. It is situated southwest of the city centre, on the southern side of the Bass Highway. The Stony Rise Road was once a very busy road, a link between Spreyton and Don.

STOODLEY: A place 8 Km. east of Sheffield at the junction of the Stoodley and Beulah Roads. It is at the eastern end of a pine plantation. The name was most probably given by the Van Diemen's Land Company.

STOREYS CREEK: A place that was constructed to house mine workers. It is 22 Km. north of Avoca on the Storeys Creek Road. The main metal mined was wolfram and there is still some mining activity today. It is a popular place for gem and rock hunters.

STORMLEA: A settlement on the Tasman Peninsula 10 Km. south of Nubeena. A mixed fruit growing area it was originally the site of a sawmill. The original name was Pootark.

STOWPORT: A village 9 Km. south of Burnie in the hilly region south of Wivenhoe. The main part of the settlement is around the junction of the Stowport and Upper Stowport Road. It is an area that was first settled by employees of the Van Diemen's Land Company.

STOWPORT UPPER: A small isolated farming district 15 Km. south of Burnie. It is situated near the junction of the Upper Stowport and the Gance Creek Road.

STRAHAN: A town on the west coast at the western end of the Lyell Highway. The port town for the west coast region caters for tourists doing boats trip to parts of Macquarie Harbour. Although the town is only an echo of its former self it is still a busy little town. A fishing fleet operates out of Strahan. It is named in honour of Major Sir George C. Strahan, who was Governor of Tasmania in 1881.

STRAHAN WEST: A suburban area of Strahan, 2 Km. west of the town on the Ocean Beach Road. Mainly formed around a large sawmill near the top of Mill Bay.

STRATHBLANE: A former town on the Huon Highway 6 Km. north of Dover. Most of the people who lived there were associated with the timber industry from the mid 1860's. The big timber mill at Raminea employed a number of them, when this closed down Strathblane became a farming area.

STRATHGORDON: A village built by the Hydro Electric Commission to house the workers on the Gordon River Power Scheme. It still houses maintenance personnel and also caters for tourists. It is situated 159 Km. west of Hobart on the Gordon River Road, on the shores of the magnificent Lake Pedder.

STRICKLAND: A small isolated settlement 14 Km. northwest of Ouse on the Strickland Road. It is in a very hilly area near the River Dee. It was named after Sir Gerald Strickland, Governor of Tasmania 1904-9.

STRINGER CREEK: A village built by the Hydro Electric Commission to house workers on the Lower Pieman Scheme it was about 25 Km north of Zeehan. The Stringer Creek is a tributary of the Pieman River and flows into the river on the northern side of the Lower Pieman Dam.

SULPHER CREEK: A quiet little village on the Bass Highway facing out into Bass Strait 5 Km. west of Penguin. Originally known as Penguin Creek it was changed when the Penguin Township came into being.

SUMMERDALE: Renamed Summerhill in 1968.

SUMMERHALL: Renamed Westwood.

SUMMERHILL: An outer suburb of Launceston, southeast of the city centre it stretches to the banks of the South Esk River. Formerly called Summerdale, this name is preserved, as the primary school is still Summerdale Primary School.

SUMMERLEAS: A small place on the Summerleas Road that is a link road between Fern Tree and the Kingston area. Summerleas is about 5 Km. northwest of Kingston.

SUNNY HILLS: Renamed Nabageena.

SUNNYSIDE: A farming district 5 Km. south of Railton via the Stoodley Road. It is an elevated area almost on top of Sun Ridge overlooking the Mersey River.

SURPRISE BAY: A settlement on the southern end of King Island in a bay of the same name. It is 32 Km. south of Currie and is a popular beach recreation area. It is a place, which figured greatly in the agricultural development of King Island. The first cultivation started at Surprise Bay in the 1880's when the first lessees were taken out.

SURGES BAY: This is a small place on the Huon Highway 10 Km. south of Geeveston. It is situated in a small bay on the Huon River of the Same Name. Once an important port for the ferries it was still being used well into the 1930's.

SURREY HILLS: The hills on the southeast side of Burnie in the Suburbs of Havenview and Romaine. They were named by the Van Diemen's Land Company and were part of their original selection that was surveyed by Hellyer in February 1827.

SURVEYORS BAY: A small place 10 Km. east of Dover on the Esperance Coast Road. It was once a busy port for the timber trade that once thrived in the area. It is situated at the mouth of the Huon River and this made it easy to access.

SWAN BAY: A bay in the Tamar River 3.5 Km. off the East Tamar Highway and 5 Km. south of Mount Direction. Used in the early days, as a place to access the river, but is now more for recreation.

SWAN ISLAND: A small island off the northeastern tip of the coastline separated by the Banks Straits. Swan Island has a lighthouse on its northern coast, named by Matthew Flinders in 1799.

SWAN POINT: A point in the west Tamar region. It is on the same peninsula of land as Paper Beach 10 Km. east of Exeter. Because it is such a prominent point it has always been used as a reference point.

SWAN RIVER: This is a large river that rises on Mount St. John and flows south until it enters the Moulting Lagoon 6 Km. north of Swansea. After it goes under the Tasman Highway near Cranbrook it passes

through some historic properties such as Glen Gala, Cranbrook House, and others.

SWANAGE: A place on the northern coastline in Anderson Bay 22 Km. east of Bridport. It was one of the town sites planned and pegged out in Governor Arthur's time but was never to become established.

SWANSEA: A country town on the east coast it is on the Tasman Highway 152 Km. from Hobart. It is the seat of local government, which is the Glamorgan Municipality - Australia's oldest rural municipality founded in 1860. Originally named Great Swanport and developed from about the 1820's, it was near the Rocky Hills Probation Station where over 400 convicts were held. The town still has many old buildings of historic value and is a popular calling place for tourists.

SWANSTON: A town that was proclaimed in June 1858 by Sir Henry Young, but it never developed. The name is still remembered in the Swanston Road, which leaves the Tasman Highway at Little Swanport and goes 40 Km. west to the network of roads east of Oatlands. A property named Swanston is on the road near where the road first meets the Little Swanport River.

SYMMONS PLAINS: An area on the Midlands Highway 6 Km. south of Perth. It was named after a property in the district. A name well known from the early 1960's when a car racing circuit was opened there.



“Scone”, now the Eskleigh Nursing Home

TABLE CAPE: A prominent point of land jutting out into Bass Strait 7 Km. north of Wynyard. It is a landmark, which dominates the Wynyard area. The lighthouse on Table Cape was built in 1885. Martin Alexander took up the whole of the Table Cape Plateau in 1870. The farm was sold in the early 1900's and named the Table Cape Farm.

TAKONE: A small isolated settlement 7 Km. west of the Murchison Highway at Henrietta. It is on the Takone Road, where it crosses the Rattler River just before it enters the Inglis River. It is situated in the rugged country of the foothills around the Campbell Range.

TAKONE WEST: A small isolated settlement 11 Km. west of the Takone settlement. It is close to where the Flowerdale River rises in the Campbell Range.

TALAWA: This is a small farming settlement 5 Km. south of Ringarooma at the junction of the East Maurice and the Barnett Roads. Its name is aboriginal for 'rain'.

TANGANA: A name given to the Post Office at Nietta Railway Station in 1918, it changed to Nietta in 1922. The reason for the name change is not known.

TANINA: A place that has almost disappeared. Situated on the Bluff Road, this runs between the Elderslie Road and the Lyell Highway. The name is still retained in the area with Tanina Bluff.

TARANNA: A town on the Tasman Peninsula 20 Km. north of Port Arthur on the Arthur Highway. It has the distinction of having the first railway in Australia powered by four convicts. It ran between Taranna and Long Bay (Oakwood) a distance of 5 Km.

TARGA: A small rural district on the Tasman Highway. It is 31 Km. east of Launceston at the junction with the Targa Hill Road on the southern bank of the St.Patricks River.

TARLETON: An area 9 Km. south of Devonport, near the junction of the Tarleton and Railton Roads. Coal was discovered there in 1850 and Scottish miners were brought to the colony and settled. When the coal ran out most of the miners turned to farming.

TARONGA: This is at the southern end of Taroona and centres on Taronga Road that branches off the Channel Highway. At one time there were was a small convict probation station in the area to perform road building among other duties.

TAROONA: An outer southern suburb of Hobart on the shores of the Derwent River. The name is an aboriginal word for 'seashell'. One of Tasmania's main tourist attractions is situated in at the southern end of Taroona this is the Shot Tower.

TAROONA PARK: Situated in the central part of Taroona off Nubeena Crescent at Crayfish Point. Taroona Park has facilities for the community's sporting and recreation needs.

TARRALEAH: A Hydro Electric Commission village situated in the centre of the power generating activities. It houses the workers who operate at the Tarraleah and the Tungatinah power developments. The name is aboriginal for 'a forester kangaroo'.

TASMAN ISLAND: An island off the southeastern part of the Tasman Peninsula. Used as a navigational aid with a lighthouse situated on the eastern shore of the island. A small farm run by the lighthouse keeper is also on the island. Named by Baudin in honour of Abel Tasman, he named it Tasman's Island.

TATANA: Renamed Exeter in 1968.

TATLOWS FOLLY: A place on the Bass Highway 10 Km. west of Smithton. The Tatlow name is well known in the district. The Tatlow family ran the coach service to Stanley and Smithton.

TAYENE: This is a small isolated settlement on the eastern side of Mount Barrow. It is 42 Km. east of Launceston on the Camden Road just north of the Camden Rivulet.

TEA TREE: This is an agricultural district 6 Km. east off the Midlands Highway at Brighton. The name comes from the native bush, which was gathered by the early pioneers to make tea.

TEA TREE UPPER: Renamed Rekuna.

TED'S BEACH: A small beach on the lakeside of the Gordon River Road 3 Km. south of Strathgordon. It is used as a boat launching area and also has picnic and barbecue facilities built there.

TEEPOOKANA: A place that has almost disappeared, it was on the west coast situated on the banks of the King River. Part of the railway line between Queenstown and Regatta Point it was where the line crossed the King River. The old railway bridge is still standing and is a favourite subject for photos. The town site was used as a port for craft small enough to navigate the river until the railway took over.

TELITA: A farming district 5 Km. northwest of Derby situated on the North-Eastern Railway line. When first started it was named Ayr but was changed about 1923 because of the confusion it was causing with a similar named place in Queensland. Telita is the aboriginal word for 'to chirrup'.

TEMMA: An isolated mining settlement on the west coast line set in the Temma Harbour 38 Km. south of Marrawah. It was the place used by the mines at the Mount Balfour field. A horse-drawn tramway connected it to the Mount Balfour area and was built in 1911. When the mines declined the population of Temma also declined but there is still some living at Temma.

TENALGA: Renamed Riverside North in 1962.

TERRYLANDS: An area in the southern suburb of Burnie of Hillcrest. It is centred on Terrylands Street, which is a destination for the public transport.

TEWKESBURY: A small rural settlement 27 Km. south of Burnie in the St.Marys River Valley. Situated at the Oonah and St.Marys Roads junction, it is in the middle of a pine plantation.

THE BLUFF: Renamed Tanina in 1910.

THE CORNERS: Changed to Conara.

THE GLEN: See Glen (The).

THE LEA: An area on the eastern side of the Southern Outlet 5 Km. south of Hobart. It is an area that is used by the Boy Scouts and other youth groups for camping and gatherings. Built and named by William Proctor who also built Proctors Road, "The Lea" was used as his country house.

THE VALLEY: This is a place on the Tasman Highway 4 Km. east of Branxholm. It is on the southern side of the highway with The Valley Lagoon on the other side.

THE WATERWORKS: Once the main source of Hobart's water supplies it is situated on the side of Mount Wellington in Ridgeway Park. It is about 6 Km. from the city centre and is a popular place for picnics and a day's outing.

THIRLSTONE: A farming district in the Port Sorell area. It is 12 Km. south of the Port Sorell settlement at the junction of Squeaking Point and

Frankford Roads. The name comes from the former Thirlstone estate that covered a larger part of the area.

THOMAS PLAINS: Changed to Weldborough.

THOMPSON'S MARSHES: Renamed to Grey.

THREE HUMMOCK ISLAND: This is the northern most of the islands in the Hunter Group. It is off the northwest corner of Tasmania on the eastern side of Hunter Island. It is about 50 Km. north of Stanley, and is a nature reserve.

THREE HUT POINT: Renamed Gordon.

THREE RIVERS: A small place on King Island on the banks of the Three Rivers Creek 4 Km. north of Currie. It is a farming area just south of a butter factory.

TIBERIAS: A small place on the Mainline Railway 10 Km. south of Parattah on a side road off the Rhyndaston Road. It was named by Doctor Hudspeth about 1822.

TINDERBOX: A small settlement in Tinderbox Bay 8 Km. south of Blackmans Bay. It is near the mouth of the Derwent River at the northern end of D'Entrecasteaux Channel. The name is thought to have been because a tinderbox was found on the shore. A tinderbox was a small metal box that contained flint, rag and some sticks dipped in sulphur.

TOGARI: A place in the far northwest 40 Km. west of Smithton on the Rennison Road. It is in an area that was divided up by the government and used as a soldier settlement area. Formerly known as Montagu Swamps it is on the western side of the Montagu River.

TOIBERRY: A small agricultural district 10 Km. west of Longford on the Bishopsbourne Road. There is also a small siding on the North-Western Line at Toiberry.

TOMAHAWK: An isolated place on the northeastern coastline on the western end of the Ringarooma Bay. It is at the mouth of the Tomahawk River, 38 Km. east of Bridport on the Tomahawk Road. It was a planned town site with the name of Du Cane after Governor Du Cane.

TONGANAH: A small rural place on the Tasman Highway 6 Km. east of Scottsdale. Situated where the Forester River goes under the highway and the North-Eastern Line crosses the highway.

TONGATABU: Changed to Weetah in 1912.

TORQUAY: Renamed to East Devonport.

TOWER HILL: A small settlement 8 Km. south of Mathinna on the slopes of Tower Hill. It was named after the hill. A telegraph station operated from Tower Hill from 1947 to 1970.

TRANMERE: A suburb of Hobart on the eastern shore of the Derwent River, south of Howrah. The name was taken from an estate of Church of England minister Reverend Rochford Barrow Grange, who received the grant in 1840.

TREFFOIL ISLAND: This is a small island off the northwestern tip of Tasmania about 2 Km. west of Woolnorth Point. Bass and Flinders discovered it in 1798 when they sailed past it in the sloop 'Norfolk'. Trefoil means clover.

TREFUSIS: This is a large isolated property on the banks of the Macquarie River. It is situated 18 Km. south of Perth on the Tooms Lake Road at the KHEME Road junction.

TRENAH: A farming district 11 Km. south of Ringarooma, an area once known as 'The Maurice' on the eastern side of Mount Maurice. It is on the Maurice Road and was used as a coach stop. The name is an aboriginal word for 'basket'.

TREVALLYN: A Launceston suburb on the western side of the city centre. It is a popular suburb for tourists. The Freelands Lookout at the top of Bald Hill gives good views of Launceston and the West Tamar region. The Trevallyn State Recreation Area that takes in the Cliff Grounds Reserve and reaches to the South Esk River is also a popular visiting place.

TREWALLA: A settlement that grew around a siding on the North-Eastern Line. It is 10 Km. east of Scottsdale and has now disappeared. It was where the railway deviates around the eastern side of Trewalla Hill. It is known that it had strong ties with the logging industry.

TRIABUNNA: An industrious town on the east coast. It is the site of a large woodchip plant, which is the largest industry on the east coast. Started as a whaling station it was also used as a garrison town. It is part of the coastline discovered by Nicolas Baudin in 1802. Its name is an aboriginal word for 'native hen'.

TRIAL BAY: This is the small bay on the southern side of Kettering Point. It is situated close to the Kettering village and the Channel Highway looks over the bay as it passes along its foreshore.

TRIAL HARBOUR: An alternative name for Remine.

TROUSERS POINT: This is on Flinders Island's southwest coast about 3 Km. from Loccota. It is named because a sailor is said to have lost his trousers on this point. The point forms the southern end of Fotheringate Bay.

TROWUTTA: A rural district 25 Km. south of Smithton on the Trowutta Road. An area that was late developing, it was not until 1902 that the first land was selected and then 1905 before the first settlers arrived. A further 6 Km. south is the Trowutta Caves State Reserve. The name is an aboriginal word for 'flint'.

TUGRAH: A small rural community 3 Km. southwest of Devonport. It is situated on the Tugrah Road which branches off the Stony Rise Road. It is on the banks of the Don River and was serviced by the Don River Railway when it was operating.

TULENDEENA: A small farming place on the Tasman Highway 14 Km. east of Scottsdale. The Tulendeena Siding, on the North-Eastern Line, is 4 Km. south of the hamlet at the base of Billycock Hill.

TULLAH: A town on the Murchison Highway 111 Km. south of Burnie. It was used in recent times by the Hydro Electric Commission to house workers on the various parts of the Pieman River Power Scheme. It started as a mining town called Mount Farrell and was, for some time, only accessed by a spur line off the Emu Bay Railway at Farrell Siding.

TULLOCHGORUM: A sheep property on the Esk Highway 7 Km. west of Fingal. A popular stop for bus tours for tourists to watch shearing displays. It was a land grant made to Mr. James Grant in 1824; he built and named it after his father's birthplace in Ireland.

TUNBRIDGE: A small town on the Midlands Highway 107 Km. north of Hobart. Originally named Tunbridge Wells it was the central stopover for the stagecoaches travelling between Hobart and Launceston. It was named by Thomas Fleming who had migrated from Tunbridge Wells, England.

TUNNACK: A farming district 22 Km. south of Oatlands on the Tunnack Road, Settled by chiefly Irish migrants it was unofficially known as Limerick. The current name is an aboriginal word for 'cold'.

TUNNEL: A small hamlet 9 Km. north of Lilydale on the Tunnel Road. It is also on the North-Eastern Line and the tunnel through the Halls Tier is just north of the hamlet.

TURNERS BEACH: A holiday resort area on the Bass Highway 12 Km. west of Devonport. It is situated on the western side of Port Fenton. The area was officially named Turners Beach on the 21st. March 1961, prior to that date it was known as Scots Beach.

TURNERS MARSH: A small farming settlement 23 Km. north of Launceston on the Pipers River Road. The Tasmanian Game Farm was set up near Turners Marsh, the first of its type in Australia.

TURNERS MARSH LOWER: This is a farming district 8 Km. north of the Turners Marsh hamlet, at the junction of the Pipers River and Bangor Roads.

TURNERS MARSH STATION: Changed to Karoola in 1890.

TURNIP FIELDS: An area on the side of Mount Wellington. Situated at the end of the Turnip Fields Road which runs off the Huon Road, and is 5 Km. from the centre of Hobart. It came by its name because turnips were grown there in the Great Depression years and were sold on the Huon Road.

TYENNA: A small farming district on the Gordon River Road 7 Km. west of National Park. It is thought that the name might be a corruption of an aboriginal word 'tiennah' for 'bandicoot'. There is no record of when it was named.

TYNWALD: An old stately home on the eastern side on the New Norfolk Township near where the Lachlan River enters the Derwent River. Once part of the Lachlan River Mills property that was brought by a politician in 1898. He named it 'Tynwald' which was the term for parliament on his native Isle of Man.

UGBROOK: A small isolated settlement on the Liena Road. This is situated at the junction with the Union Bridge Road 5 Km. west of Mole Creek. Ugbrook is a farming district.

ULVERSTONE: A town on the Bass Highway 121 Km. west of Launceston. It is situated on the banks of the Leven River and is the centre of a farming and agricultural district. The town was slow to begin and was first started about 1848 when paling-splitters were working in the district. When more settlers moved into the area it became known as The Leven. Some timber milling is still going on in the Ulverstone area. It is not known who named Ulverstone but it has always been thought to be after Ulverstone, England.

ULVERSTONE WEST: This is the part of Ulverstone that is on the western side of the Leven River. One of the timber mills in the area has a history dating back to the very early days. It is still operating on the western bank of the Leven River near, Hobbs Parade.

UNDERWOOD: A rural district 24 Km. northeast of Launceston on the Lilydale Road. Underwood is a district that has had, and still has, timber-milling industries. It is situated around the junction with the Karoola Road. The Pipers River flows through the area.

UNIVERSITY OF TASMANIA: This is situated in the Hobart Suburb of Sandy Bay and was established on the 1st. January 1890. It obtained a Royal Charter in 1915, and was the fourth university to be established in Australia.

UPWAY: This was a town reserve, which was surveyed and laid out but never settled. Upway was north of the Mount Direction settlement on the Dalrymple Road near where the Bell Bay Railway line crosses the road.

UPPER ESK: A small isolated settlement 16 Km. west of Mathinna on the Upper Esk Road and the South Esk River. Originally named Cloverdale but was changed in 1948.

UPPER FLOWERDALE: Changed to Moorleah.

UPPER HUON: Changed to Glen Huon.

UPPER LIFFEY: This is a place at the junction of the Liffey and the Bracknell Roads, 3.5 Km. east of Liffey. It has now almost lost its identity.

UXBRIDGE: A farming district in the Derwent Valley 20 Km. west of New Norfolk. Situated on Whites Road, this is a small road off the Uxbridge Road, 8 Km. south of Bushy Park.

VALLEYFIELD: A property on the Lyell Highway west of New Norfolk. It was originally built as the King's Head Inn about 1825. However, after a few years, it was bought by William Shoobridge and turned into a hop growing property. There was a siding on the Derwent Valley Line about halfway between New Norfolk and Lawitta.

VANSITTART ISLAND: An island in the Furneaux Group. It is situated between Flinders Island and Cape Barron Island, in Franklin Sound. Originally named Guncarriage Island it was a popular place for sealers to gather before official settlement. Its present name is thought to be in honour of an English cabinet minister in the early 1800's.

VERMONT: A northeastern suburb of Launceston on the eastern side of Mowbray. It is chiefly along Vermont Road, which comes off the Invermay Road at the Mowbray Hotel, and goes in an arc towards Ravenswood.

VERONA: A resort area 18 Km. south of Cygnet. Now referred to as Verona Sands it is on the Channel Highway at the mouth of the Huon River. Once a busy port for the timber and fruit industries but road transport took over and the port became obsolete.

VINE GROVE: A property 2 Km. west of Scottsdale on the Tasman Highway. The property is now called Saliers Hill. Originally it was situated in the vicinity of the Vine Grove Hotel, a focal point in the area.

VICTORIA: Renamed Huonville.

VICTORIA VALLEY: A small place 20 Km. north of Ouse on the Victoria Valley Road. At one time it was the Old West Coast Road. It was first started in 1841 as a convict probation station. An attempt was made to make productive farms with the aid of the convicts but the experiment failed. Some of the convict ruins can still be seen there.

WADDAMANA: A village on the banks of the Ouse River. It is 49 Km. north of Ouse on the Waddamana Road, and used by the Hydro Electric Commission for workers in the Waddamana Power Station and other power schemes in the area. There have been two power stations named Waddamana, the first was built in 1916 and was the first in the Great Lake area, the second was built during World War II. Waddamana is an aboriginal word for 'noisy water or big river'.

WAIMEA HEIGHTS: An area in the southern Hobart suburb of Sandy Bay. Centred on the elevated end of Waimea Avenue where there are good views of the Derwent River and the Hobart waterfront.

WALDHEIM: This is an accommodation chalet on the Cradle Mountain. The chalet provides accommodation for 53 people, it is 83 Km. south of Devonport near the end of the Cradle Mountain Road. Built by Gustav Weindorfer in 1912, he used local timber, mainly pencil pine. The building has been restored and popular as a tourist attraction.

WALKER ISLAND: An island in the Hunter Group on the western side of Bass Strait. Situated about 1 Km. off the northern end of Robbins Island, it was part of the Van Diemen's Land Company grant.

WALPOLE: A small orchard-growing district on the Huon Highway 2 Km. north of Dover - on the eastern bank of the Dover River. Walpole is a satellite hamlet of Dover.

WARATAH: A mining town on the Waratah Road 77 Km. south of Burnie. In recent years the town has been growing, new mining ventures are taking place in the general area. The town had its beginnings in 1871 when James "Philosopher" Smith discovered tin at Mount Bischoff. At one time the population reached 4,500 but is now under 500. It was connected to the Emu Bay Railway by a branch line, which was opened in 1885 then closed in 1940. The Van Diemen's Land Company surveyors were responsible for naming the town.

WARRANE: An eastern shore suburb of Hobart. It is chiefly a housing estate, which was built by the Housing Department in the late 1940's and early 1950's. It gets its name from the Warrane Estate in Bellerive. This name was used on the present day Montagu Bay area then transferred to the present site in 1941 by the Surveyor General of the time.

WARRENTINNA: A small settlement on the Warrentinna Road 8 Km. north of Branxholm. It is situated on the eastern end of a large pine plantation. Warrentinna grew around a large sawmill that operated there until well into the 1900's, but it is now almost deserted.

WARRINGA: An isolated community 30 Km. south of Ulverstone near the junction of the South Preston and Warringa Roads. This is in an area well known for waterfalls, near the Preston Falls and the Kettle Falls.

WATERHOUSE: A small isolated place 27 Km. west of Bridport. It is situated on the Waterhouse Road close to the junction with the Homestead Road, which leads to Waterhouse Point. Gold was discovered there in 1869 however, it only lasted about two years.

WATERLOO: A small community on the Huon Highway 8 Km. south of Geeveston. It is an orchard growing area and has good access to the popular Waterloo Bay. Originally known as Adelaide but was changed to the same name as the bay.

WATERLOO POINT: Renamed Swansea.

WATERSMEET: A place near the southwest corner of Lake St.Clair in Cynthia Bay. Watersmeet is situated where the Cuvier and Hugel River meet. It is also the meeting place of the Mount Rufus and the Cuvier Valley Walking Tracks.

WATERS MEETING: This is a well-named place as it is where the Swan River meets the West Swan River, 20 Km. west of Bicheno. The Old Coach- Road runs very close to it. The road was used by the coach, which ran between Fingal and Mathinna, a popular place with the travellers.

WATTLE CORNER: This is where the Camden Road, Ben Lomond Road and the Blessington Road meet. It was an important corner in the coaching days; this junction is on the banks of the North Esk River.

WATTLE GROVE: This is a small place 6 Km. west of Cygnet on the Wattle Grove Road. Now it is an orchard-growing district but once it was part of the timber industry that covered the district.

WATTLE GROVE LOWER: An orchard-growing district on the Cygnet Coast Road. Situated on the eastern shore of the Huon River, it is 8 Km. west of Cygnet. When first discovered it was thick with wattle trees, hence it's name.

WATTLE HILL: An agricultural place 6 Km. northeast of Sorell on the Nugent Road. It was part of an early land grant to a property named "Shrub End". A property of this name still exists, it is about 5 Km. west of Wattle Hill. Wattle Hill has been renamed Pawleena.

WATTS SIDING: A siding on the North-Western Line about 3 Km. west of Myalla, situated where Watts Road crosses the railway line. The

road leads to Detention River and the Detention Falls, a popular tourist attraction.

WAVERLEY: An eastern Launceston suburb made famous by the woollen mills, which carried its name. The mill and its products are now part of Launceston's tourist attractions. It was first opened in 1874 it obtained power from a 7.5m Waterwheel in Distillery Creek.

WAYATINAH: A village built by the Hydro Electric Commission 24 Km. west of Ouse, on the western bank of the Wayatinah Lagoon. The Wayatinah Power Station is 2 Km. south on the Derwent River. The water from the lagoon is moved to the power station by 2 Km. off twin wood stave pipelines. Wayatinah is an aboriginal word for 'a brook or creek'.

WEASEL PLAINS: An old property 15 Km. north of Bothwell. It has its own access road branching off the Lake Highway 10 Km. north of Bothwell. Governor Sorell travelled through the area in December 1820 and was impressed with the quality of grazing land at Weasel Plains.

WEDGE BAY: Renamed Nubeena.

WEEGENA: An agricultural district 18 Km. northwest of Deloraine via Dunorlan. The village is situated around the area where the Weegen Road makes a right angle turn to head north towards Kimberley.

WEELATY: This is an area on the Tasman Highway about 7 Km. east of St. Patricks River settlement, on the western end of a pine plantation. It is where the Tasman Highway crosses the Sideling Range.

WEETAH: An isolated farming district 8 Km. north of Deloraine on the Weetah Road. When Weetah was first opened up it was named Tongataboo but was changed in 1912. Weetah is aboriginal for 'wood'.

WELDBOROUGH: A former tin mining town on the Tasman Highway 53 Km. east of Scottsdale. Originally named Thomas Plains it was a thriving town. A large work force of 900 Chinese labourers made Weldborough it the headquarters for the Chinese population. When the population of the town gradually diminished, the Joss House, which had been erected there, was moved to the Queen Victoria Museum in Launceston.

WELLINGTON VALE: This was the name given to a Post Office situated at the foot of Mount Wellington, at the corner of Strickland Avenue and Marlin Road. The local progress association asked for a name not linked with the Cascade Brewery.

WELSH: A township reserve planned for a site in the vicinity of the Gardners Bay inlet. It was planned before Lovett (later Cygnet) had started to become a main settlement.

WENVOE: This was a place proclaimed a town in April 1877. It is situated in present day Devonport about the area between Forbes Street and Middle Road. Originally it was a property brought by Charles Thomas in 1854; he built and named the estate after a place in his native Wales.

WESLEY VALE: An industrial town 9 Km. east of Devonport on the Sorell Road. Once a quiet little rural town, in the 1960's a board mill was built there and then later a paper mill. The district around Wesley Vale is still a farming area.

WEST BAY: Renamed Rowella.

WEST BURNIE: The part of Burnie that takes in the West Park Oval and the area on the western side of the city. Most of this area was owned by the Van Diemen's Land Company, now it is an historic park.

WEST FRANKFORD: This is a small community on the Frankford Road 6 Km. northwest of the Frankford village. It is an isolated farming area on the eastern side of the Franklin Rivulet.

WEST KENTISH: A village on the Kentish Road that leads to Lake Barrington 8 Km. west of Sheffield. Its name, which is the same as the local government, was in honour of Government Surveyor Nathaniel Kentish, who with a party of 20 probationary convicts explored and surveyed the area.

WEST LEITH: Renamed Turner's Beach.

WEST PARK: This is the main recreation park in West Burnie. It is situated on the northern side of North Terrace, which carries the traffic for the Bass Highway through this part of Burnie.

WESTBURY: A town on the Bass Highway 34 Km. west of Launceston. It was first marked out in 1823 and surveyed in 1828. Once the administrations centre for the district it has many old historic buildings. It is said to be the only town in the southern hemisphere to have a Village Green.

WESTERN CREEK: A rural district 24 Km. southwest of Deloraine. It is situated in the foothills of the Great Western Tiers on the Chestnut Road. The area southwest of the settlement around Mother Cummings Peak is a logging area.

WESTERN JUNCTION: This was a railway settlement on the Evandale Road 3 Km. north of Evandale. It is where the railway junction for the North-Western Line branched off the Main Line. Up until the late 1950's the rail gauge between Hobart and Launceston changed at this point and passengers were required to change trains. When it was first opened as a railway station it was named Evandale Junction.

WESTERWAY: A town on the Gordon River Road. It is 69 Km. west of Hobart on the banks of the Tyenna River. A picnic area is set up beside the river in a very picturesque setting.

WESTWOOD: Renamed Summershall in 1919.

WESTWOOD: This is a small farming district 10 Km. north of Carrick on the Westwood Road. It is situated on the northern side of the Mersey River.

WEYMOUTH: A village situated at the mouth of the Pipers River. It is on the northern coastline 14 Km. north of the Pipers River village and at the end of Weymouth Road. The name comes from the 'Weymouth Farm' which is about 4 Km. south of the village.

WHITE ROAD: A small rural village 10 Km. north of Evandale it is situated around the junction of the Blessington and Egerton Roads junction. It was named because of the colour of the stubble after harvesting grain crops.

WHITEFOORD: A farming district 23 Km. southeast of Oatlands, situated at the junction of Stonehenge and Woodsdale Roads. It was named after John Whitefoord who was the second Police Magistrate to serve in the Oatlands district.

WHITEFOORD HILLS: This was renamed Moltema in 1915, it was a grant to Captain Malcolm Laing in 1826.

WHITEMARK: The administrative centre of Flinders Island. It was not settled until about 1900 then it was 1908 before the municipal council was first elected. It is situated on the lower part of the west coast with the airport 7 Km. to the north. The name is thought to have come from a surveyor's peg that was left there.

WHITEMORE: This is a farming district on the Whitemore Road 7 Km. southwest of Carrick. The railway station for the area is 1.5 Km. north of the settlement on the same road.

WHYTE RIVER: This was a mining town on the west coast about 18 Km. south of Savage River - near the Whyte River. The town has now almost disappeared. It was named after Mr. James Whyte who was a M.H.R. in the 1860's.

WIHAREJA: A small place in the lake country 10 Km. south of Miena on the Waddamana Road. It was the summer residence of John Bisdee. He made the name from the letters of his four sons, Winch, Harold, Reginald and Jack.

WILLIAMSFORD: A mining town on the west coast. It is 7 Km. south of Rosebery on the banks of the Ring River. Williamsford is mainly to house workers for the Hercules Mine run by the E.Z. Company. Once connected main Emu Bay Railway by the North East Dundas Line, which was closed in 1932. The Williamsford Road connects it to Rosebery.

WILMOT: A small hamlet on the Wilmot Road, 38 Km. south of Devonport on the western side of Lake Barrington. A number of travellers pass through Wilmot on their way to Cradle Mountain. It was named after Sir John Eardley-Wilmot, who was the first non-military Governor of Tasmania (1843).

WILMOT LOWER: A small rural settlement, 30 Km. south of Devonport on the Wilmot Road near the junction with Hayes Road, close to the Wilmot River.

WILMORES LANE: An historic road which runs from the southern end of Longford then west for 5 Km. to the junction with the Bishopsbourne Road. There are a number of old properties along the road dating back to a very early period.

WILSONIA: This was a small place on the Ulverstone - Nietta Line, 2 Km. south of North Motton. It has lost its identity today and is only remembered by the Wilsonia Creek that is a tributary of the Gawler River.

WILTSHIRE: This is a railway settlement on the Bass Highway. Some believe the Van Diemen's Land Company surveyor named it, and is now a timber loading station.

WILTSHIRE JUNCTION: The same as the above. The "Junction" part of the name was dropped off in 1968. The line had a junction to Stanley at Wiltshire, while the main line went inland.

WINDERMERE (CLAREMONT): An area on the southern side of Claremont built up by the Housing Department. They used the name of

the bay on northern side of the peninsula of land on which it stands. Capt. Hayes named it in 1893.

WINDERMERE: This is a small orchard growing place in the east Tamar district, 8 Km. north of Dilston on the Windermere Road. It began when Doctor Matthias Gaunt received a grant in 1830. He built a sawmill and planted a vineyard. Later he converted his sawmill to a flour-mill.

WINDMILL HILL: This is in Launceston on the border of East Launceston in the Windmill Hill Reserve. A windmill was built there in 1826 and was part of the signal commutation line between Launceston and Low Head. It was last used to send a signal in 1858 then it was replaced by the electric telegraph.

WINKLEIGH: A small settlement in the West Tamar region. It is 8 Km. west of Exeter situated around the junction of the Winkleigh and Nettlefolds Roads. It was an area settled mainly by Scottish migrants in the 1830's. The Presbyterian Church, which still stands, was built in 1887.

WINNALEAH: A farming village 106 Km. west of Launceston on the eastern end of Warrentinna Road. It is a dairy farming area with some cash cropping. It has always been part of the North-East Line. The rich volcanic soil has produced good crops that are railed to Launceston.

WIVENHOE: This is an eastern suburb of Burnie on the eastern banks of the Emu River. It is part of the industrialized area of Burnie, which starts in South Burnie.

WOODBIDGE: A spread out village 43 Km. south of Hobart on the Channel Highway. It is a farming and orchard-growing district. It was originally named Peppermint Bay the name of a property and birthplace of Mr. George Miles. The name is preserved in the bay near the village of Woodbridge.

WOODBURY: A small rural settlement 18 Km. north of Oatlands at the junction of the Glen Morey Road and the old Midlands Highway. It was a grant to Robert Grant who named the property 'Woodbury'.

WOODLANDS: Renamed Lowdina in 1914.

WOODSDALE: A farming district 32 Km. southeast of Oatlands on the Woodsdale Back Road. The first settlers arrived there in 1864, and it was named after Mr. N.A. Woods an Inspector of Roads in the district.

WOODSTOCK: This is a small rural district on the Channel Highway 5 Km. south of Huonville. It is a farming and orchard-growing district.

Woodstock started as a timber area; Wallace Kellaway built the first sawmill in the Huon River area at Woodstock.

WOODSTOCK UPPER: A small community 4 Km. east of Woodstock on the Pelverata and Barretts Road junction. It is situated on the southern bank of the Kellerway's Creek.

WOODY ISLAND: A small island in Pitt Water almost directly south of Sorell. Matthew Flinders discovered the island in 1798. It is often confused with Satellite Island in the D'Entrecasteaux Channel.

WOOLMERS: An historic property on the banks of the Macquarie River, 2 Km. south of Longford on Woolmers Lane. It was originally owned by Thomas Archer who brought it in 1813 and named it after a place in Hertfordshire, England.

WOOLNORTH: A large property that takes in most of the Northwestern corner of the state. It was founded in 1825 by Royal Charter of King George IV, and is owned by the Van Diemen's Land Company. It is now open to prearranged tours.

WYBALENNIA: This was the aboriginal settlement on Flinders Island and was close to Emita. The Wybalenna Chapel has been restored at Emita and is still used. In 1833 the Cape Portland aborigines were first persuaded to settle there, some of the foundation of the buildings is still to be seen there.

WYBALERMA: Renamed Glen Huon.

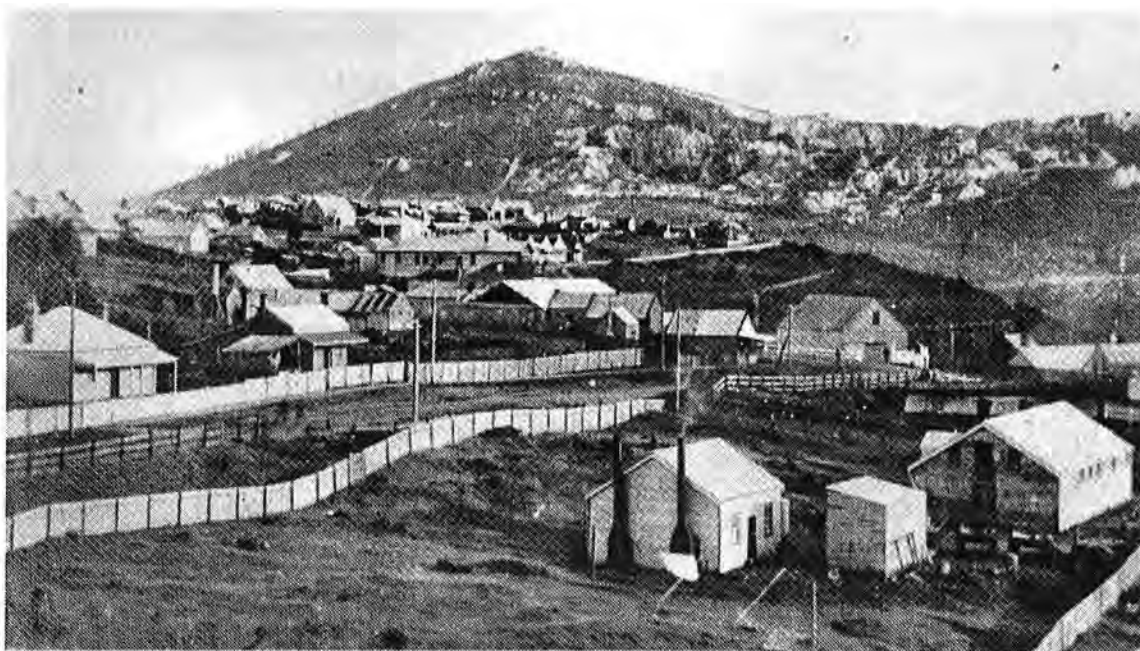
WYENA: The name given to a small place on the North-Eastern Line 15 Km. north of Lilydale. It is situated on the Burns Road overlooking the Denison River.

WYNIFORD RIVER: This was a mining settlement southeast of Pioneer. It was on the Three Notch Road, and although it was once a busy settlement it has now disappeared.

WYNYARD: A town on the northwest coast 16 Km. west of Burnie. Wynyard has a population of around 4,600 some of whom are workers for the paper mills at Burnie. It is the centre of a large farming area. It was originally named Table Cape by Bass and Flinders in 1798. However, it was changed to Wynyard about 1850 after E.B. Wynyard, who was a Lieut. -General in the New South Wales Corps.

WYNYARD EAST: This is the part of the Wynyard Township on the eastern side of the Camp Creek, and is the only part of the town that faces onto Bass Strait.

WYRE FOREST: A district off the Molesworth Road 3 Km. from the Lyell Highway. The Wyre Forest Road branches off the Collins Cap Road and goes up Murdock's Hill.



Waratah 1906

YAMBACOONA: This is a small settlement on King Island 28 Km. north of Currie. It was an area used by the government to settle returned soldiers after World War I. The land proved unproductive and most of the farms were not successful.

YARLINGTON: A small farming settlement. It is situated in the hilly area 4 Km. west of Colebrook on the Yarlington Road near the junction with Quoin Road.

YARRA CREEK: A farming community on King Island 8 Km. west of Lymwood. The government as part of the Soldier Settlement Scheme used it after World War II. The main community is around the junction of Yarra Creek and Millwood Roads.

YATES: This was a railway siding on the Derwent Valley Line. It is situated 3 Km. east of the Macquarie Plains Station, overlooking the Derwent River.

YELLOW ROCK: A small place on King Island 5 Km. west of East Wickham- it is the western most point of King Island. It is on the southern side of the Yellow Rock River.

YOLLA: A small rural settlement on the Murchison Highway 16 Km. south of Somerset. Yolla is known for its quality dairy products. When first settled it was named Camp Creek but was changed to Yolla in 1906.

YORK PLAINS: A rural community 9 Km. northwest of Oatlands chiefly a sheep district. It was named by Governor Lachlan Macquarie in 1811 in honour of the Duke of York. The original Midlands Highway, marked out by James Meehan in 1812, were very close to the York Plains property, it was not changed until 1836.

YOUNG TOWN: A southern suburb of Launceston on the outskirts of Launceston. All travellers passed through Young Town on the old Midlands Highway.

ZEEHAN: A town on the west coast 38 Km. from Queenstown. A mining town it is the administrative centre for some of the mining companies. It started as a mining town in the early 1880's, in 1903 it became Tasmania's third largest town with a population of 10,000. Zeehan takes its name from Mount Zeehan which was part of the land that was first sighted by Abel Tasman in 1642 and was named by Matthew Flinders after on the two ships in the Dutch explorer's expedition.

ZEEHAN EAST: This was the name given to a Post Office on the eastern side of the town that was opened from 1890 to 1921. The main street of Zeehan was very long and there were Post Offices at each end.



Zeehan and Mount Zeehan c.1910