

A NEW COMBINATION IN THE GENUS BOSSIAEA VENT.  
(PAPILIONACEAE)

by

A. B. COURT\*

**Bossiaea bossiaeoides** (A. Cunn. ex Benth.) A. B. Court comb. nov.

*Acacia bossiaeoides* A. Cunn. ex Benth. in Hook. *Lond. J. Bot.* 1 : 323 (1842), non sens. Seemann *Europ. Eingef. Acac.* 7 t.1 (1852).

*Bossiaea phylloclada* F. Muell. in *Trans. phil. Inst. Vict.* 3:52 (1859).

During studies on Australian Acacias, the author elucidated the identity of *A. bossiaeoides* which, hitherto, has been regarded as an *Acacia* known only from sterile specimens. Since it is conspecific with *Bossiaea phylloclada*, a younger name, the new combination *B. bossiaeoides* becomes necessary and *B. phylloclada* is regulated to synonymy accordingly.

*Bossiaea bossiaeoides* is widely distributed in northern Australia and ranges from the Isdell River in the Western Kimberleys to Westmoreland Station in far north-west Queensland. All known occurrences of this species lie to the north of 18°S.

LECTOTYPE OF ACACIA BOSSIAEOIDES

Specimens of *A. bossiaeoides* were first collected near the mouth of the Liverpool River (ca. 12° 15'S and 134° 12'E) on the north coast of Australia by Allan Cunningham on 7 August 1819 under the number 405/1819. Cunningham thought his specimens represented an *Acacia* for he wrote the following remarks in his diary:—

“405.

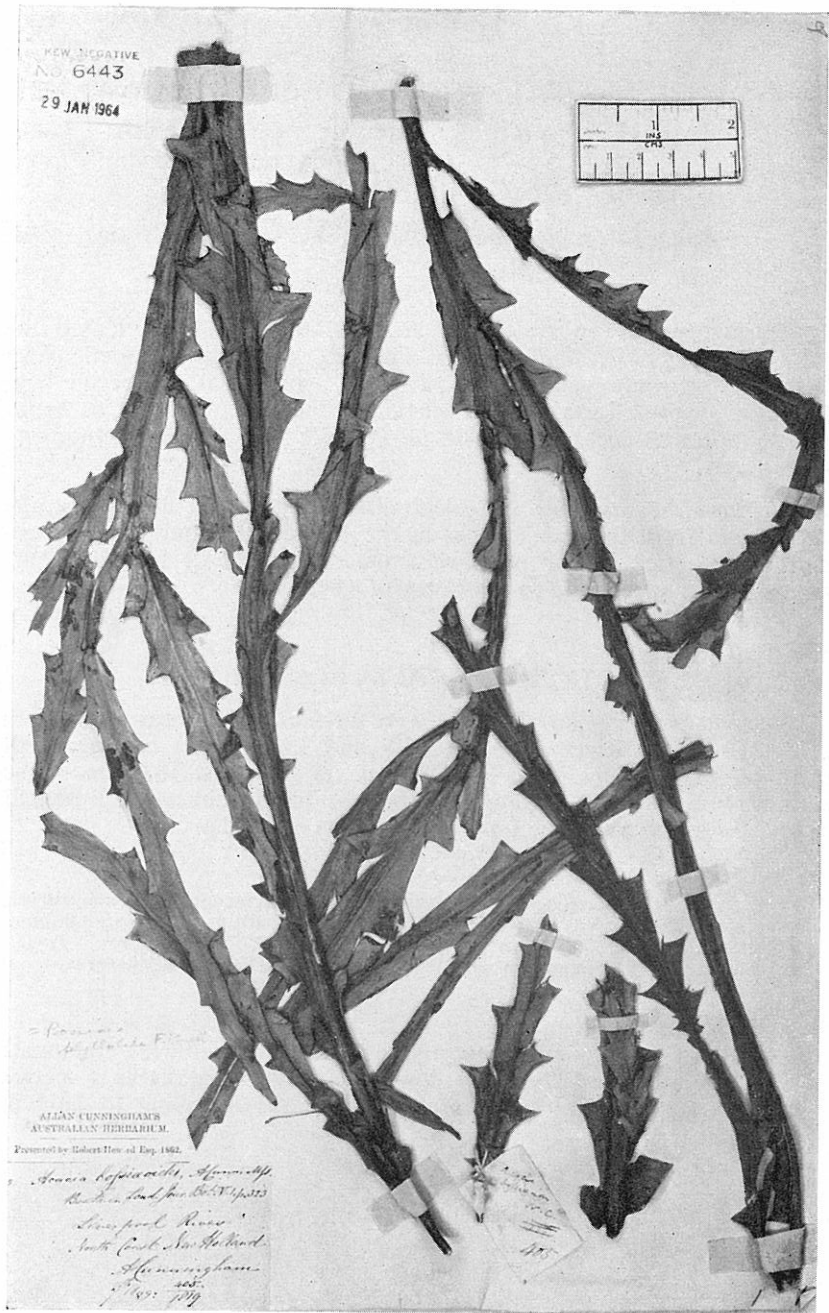
*Acacia bossiaeoides*. caule aphyllalato glaucescens, denticulis alternis patentibus decurrentibus rigidis mucronatis, margine inferiore. subunglandicluo (sic!), bracteis imbricatis exterioribus persistentibus. A tall shrub (witht. fructn.) in dry barren elevated Deserty Banks, Liverpool River 7 Augt.”

George Bentham subsequently described this material as *Acacia bossiaeoides* on Cunningham's authority and added the following comment: —“Though I have not seen the flower, this is so remarkable a species and so evidently allied to *A. alata*, that I was unwilling to have it unnoticed.”

---

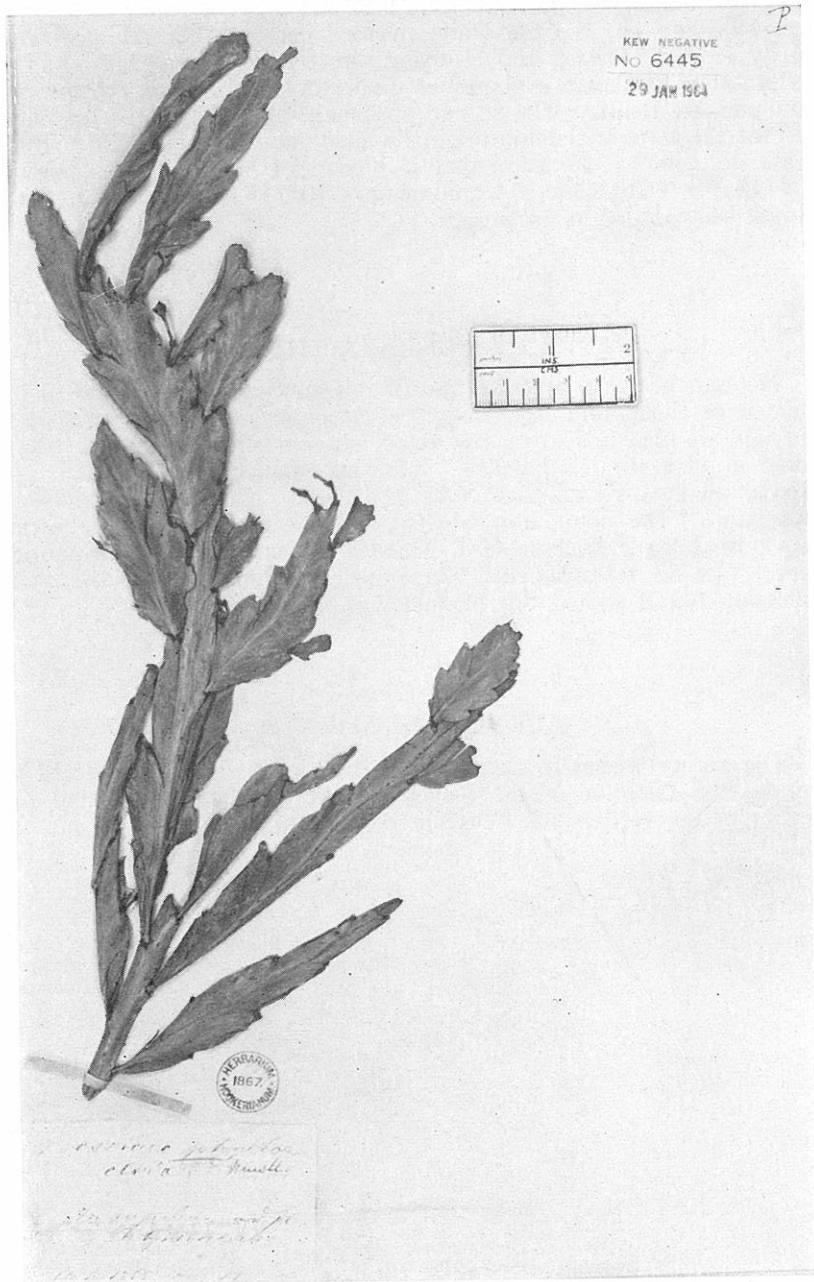
\* National Herbarium of Victoria.

PLATE 18



Lectotype of *Acacia bossiaeaides* A. Cunn. ex Benth.

PLATE 19



Lectotype of *Bossiaea phylloclada* F. Muell.

Two Cunningham specimens are filed at K. One of these (illustrated here by Plate 18) is from Cunningham's personal herbarium written up by Robert Heward and referring directly to Cunningham's manuscript. This specimen is chosen as the lectotype of *Acacia bossiaeoides* A. Cunn. ex Benth. The second specimen, although almost certainly part of the same collection originally filed in the Hooker Herbarium, bears no definite indication that it is part of Cunningham's number 405/1819. A duplicate of Cunningham's 405/1819 is filed in BM and should be regarded as an isotype.

#### LECTOTYPE OF BOSSIAEA PHYLLOCLADA

No part of the type collection of this species can be found in the Melbourne Herbarium. However, two specimens that may be regarded as types are filed in K. One of these, chosen here as lectotype (illustrated in Plate 19), is labelled "Bossiaea phylloclada, F. Muell. In rupibus ad fluv. Fitzmaurice. Oct. 1855 ferd. Mueller." in Mueller's own hand. The other, also labelled in his hand, bears the following data "Bossiaea platyclada ferd. Mueller. Rocks on the Fitzmaurice river. Oct 55 ferd. Mueller" is almost certainly part of the same collection but it should not be taken as the lectotype.

#### ACKNOWLEDGMENTS

The author wishes to acknowledge the kind assistance rendered to him by the Director of the Royal Botanic Gardens, Kew, and the Keeper of the Herbarium, Museum of Natural History, London.