



Whyalla Solar Farm

August 2016



Confidentiality and Disclaimer

This presentation includes proprietary and confidential information. The recipient of this presentation must not use any information in this presentation for any purpose other than that expressly consented to or directed by Adani Infrastructure Pty Ltd (Adani) and must not disclose any information in this presentation to any other person without Adani's express consent.

This presentation shall not be photocopied, reproduced, or distributed to any person at any time without the prior written consent of Adani.

The views expressed in this presentation contain information that has been derived from publicly available sources or provided by third parties and has not been independently verified. No representation or warranty is made as to the accuracy, completeness or reliability of the information. This presentation should not be relied upon as a recommendation or forecast by Adani.

This presentation contains certain forward-looking statements with respect to the financial condition, results of operations and business of Adani. All statements other than statements of historical fact are, or may be deemed to be, forward-looking statements. Often, but not always, forward-looking statements can be identified by the use of the words such as "plans", "expects", "expected", "scheduled", "estimates", "intends", "anticipates", "believes" or variations of such words and phrases, or state that certain actions, events, conditions, circumstances or results "may", "could", "would", "might" or "will" be taken, occur or be achieved. These forward-looking statements are not guarantees or predictions of future performance, and involve known and unknown risks, uncertainties, contingencies and other factors, many of which are outside the control of Adani, that may cause actual results, performance or events to differ materially from those expressed or implied in these statements. There are a number of factors that could cause actual results or performance to differ materially, including (without limitation), risks and uncertainties associated with the Australian and global economic environment and capital market conditions; commodity price fluctuations; fluctuations in foreign currency exchange and interest rates; demand for commodities; competition; Adani's relationships with, and the financial condition of, its suppliers and customers; plans, strategies and objectives of management; anticipated production or construction commencement dates; capital costs and scheduling; operating costs; anticipated productive lives of projects, mines and facilities; provisions and contingent liabilities; legislative, tax, fiscal and regulatory changes and/or other changes in the laws that affect Adani's business, including environmental laws; and operational risks. The foregoing list of important factors is not exhaustive. There can be no assurance that actual outcomes will not differ materially from these statements.

Each forward-looking statement speaks only as of the date of this presentation. Adani does not undertake any obligation to publicly update or revise any forward-looking statement as a result of new information, future events or other information.

Except as expressed otherwise, financial forecasts provided in this presentation relating to the estimated performance of Adani and its businesses in the future are based on Adani's July 2014 budget and forecast, and are subject to the assumptions underpinning that forecast including assumptions as to the risks and uncertainties referred to above. All forecasts and forward-looking statements in this presentation are subject to update, revision, change, withdrawal or revocation without notice.

This presentation contains certain non-statutory financial measures including underlying EBIT, underlying EBITDA, underlying NPAT, underlying earnings per share and underlying effective tax rate. These measures are used to assist the reader understand the financial performance of Adani's operations. Non-statutory financial measures have not been subject to audit or review.

All balance sheet items are based on statutory financial information. Except as otherwise expressed, references in this document to net profit/loss after tax refer to net profit/loss attributable to equity holders of the parent. Segment results referred to throughout this presentation are those reported in Adani's Annual Report 2014. They are equivalent to segment underlying results.

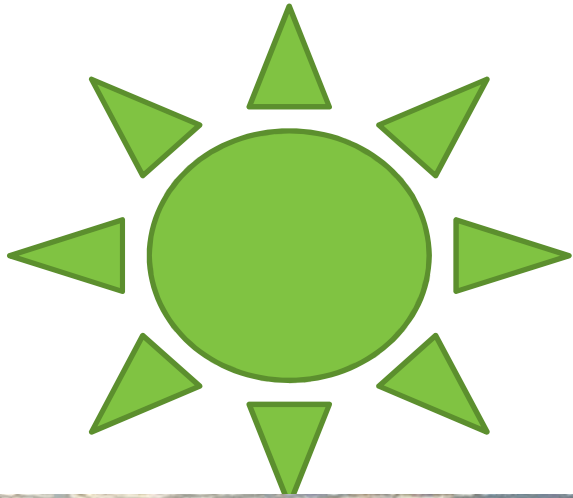
The information contained in this presentation is only current as at the date of this presentation. No representation or warranty is expressed or implied that such information remains unchanged in any respect as of any date or dates after those stated herein, with respect to any matter concerning Adani or any statement made in this presentation. This presentation is provided for informational and reference purposes only and does not constitute an offer or the solicitation of any offer or sale by Adani or any of its affiliates in any way. The information contained in this presentation is not intended to constitute investment advice and should not be relied upon in connection with any investment decision. This presentation does not constitute an offer document or an offer of securities in any jurisdiction and should not be considered as a recommendation that any person subscribe for or purchase Adani securities.

The information contained in this presentation does not purport to be all-inclusive or to contain all information required. In making any assessment or evaluation of Adani's businesses, the recipient must rely on its own examination of Adani, including the merits and risks involved. Any potential investor in Adani or in any other company should seek independent financial advice and read all relevant documents relating to Adani or any other company, including its financial statements and reports.

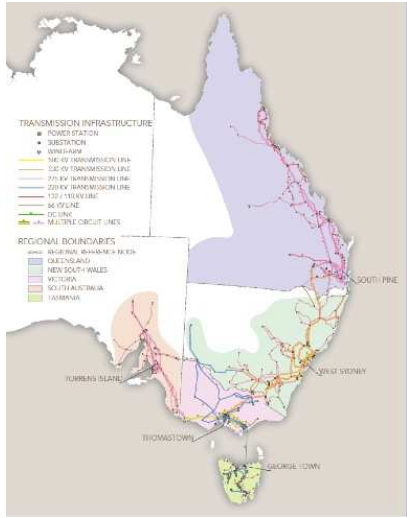
No action has been taken to qualify this presentation for possession, distribution or use under the laws of any jurisdiction. The possession, distribution or use of this presentation in any manner contrary to applicable law is expressly prohibited by Adani. Accordingly, by their receipt of this presentation, recipients represent that they are able to receive this presentation without contravention of any registration requirements or legal restrictions in the jurisdiction in which they reside or conduct business. No liability to any person is accepted by Adani for the distribution of this presentation in any jurisdiction. This presentation does not constitute an offer or invitation in relation to any investment in Adani and Adani does not regard any person (whether or not a recipient of this presentation or any other information) as its customer. The recipient must seek its own legal, financial, tax and other professional advice and make its own independent judgment with respect to any matter contained in this presentation.

To the maximum extent permitted by law, Adani, its management team, its related bodies corporate and their respective directors, officers, employees, advisors and consultants disclaim any and all liability for loss or damage suffered by any person, directly or indirectly, as a result of relying on this presentation, including the forward looking information (whether arising from negligence or otherwise), or as a result of any information contained in, or any omissions from this presentation or the forward looking information. None of Adani, its management team, its related bodies corporate and their respective directors, officers, employees, advisors and consultants have any obligation to advise any party of any information of which any of them become aware, or any change to, or any error in the information contained in the presentation.

Nothing in this presentation should be construed as either an offer to sell or a solicitation of an offer to buy or sell any securities of Adani in any jurisdiction. In particular, securities may not be offered or sold (i) in the United States or to, or for the account or benefit of US persons, other than pursuant to an effective registration statement or in a transaction exempt from the registration requirements under the US Securities Act of 1933, as amended, or (ii) in any other jurisdiction where registration or an exemption from registration is required.



What is the value proposition in solar for South Australia?



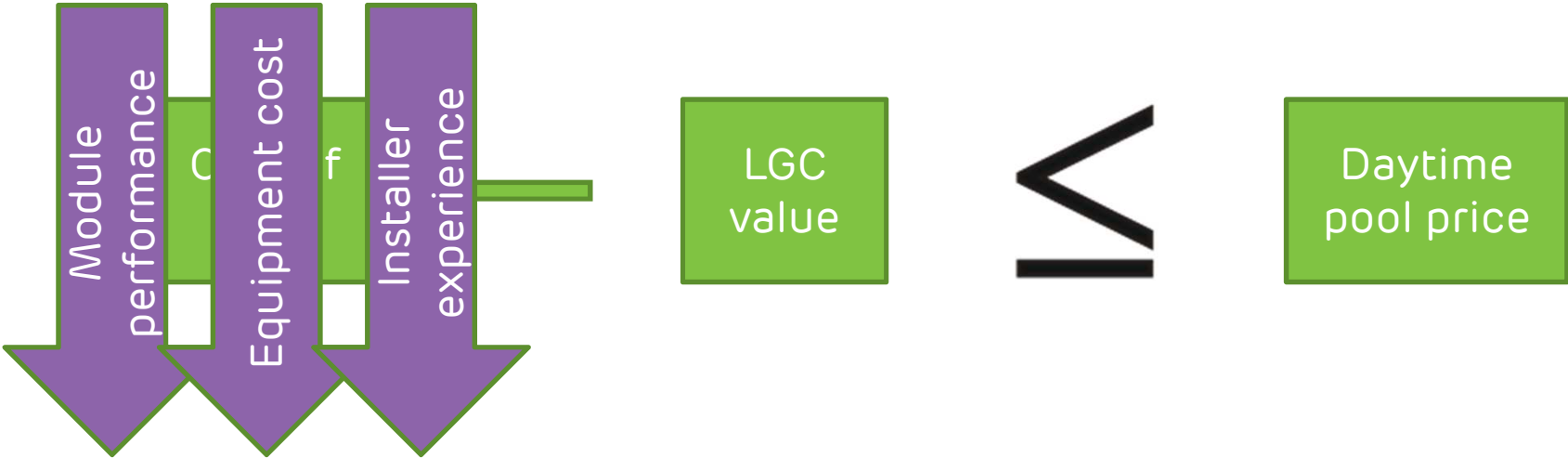
Solar value proposition

If the following equation is true, then there is a value proposition for large scale solar

$$\text{Cost of Solar} - \text{LGC value} \leq \text{Daytime pool price}$$

Solar value proposition

If the following equation is true, then there is a value proposition for large scale solar



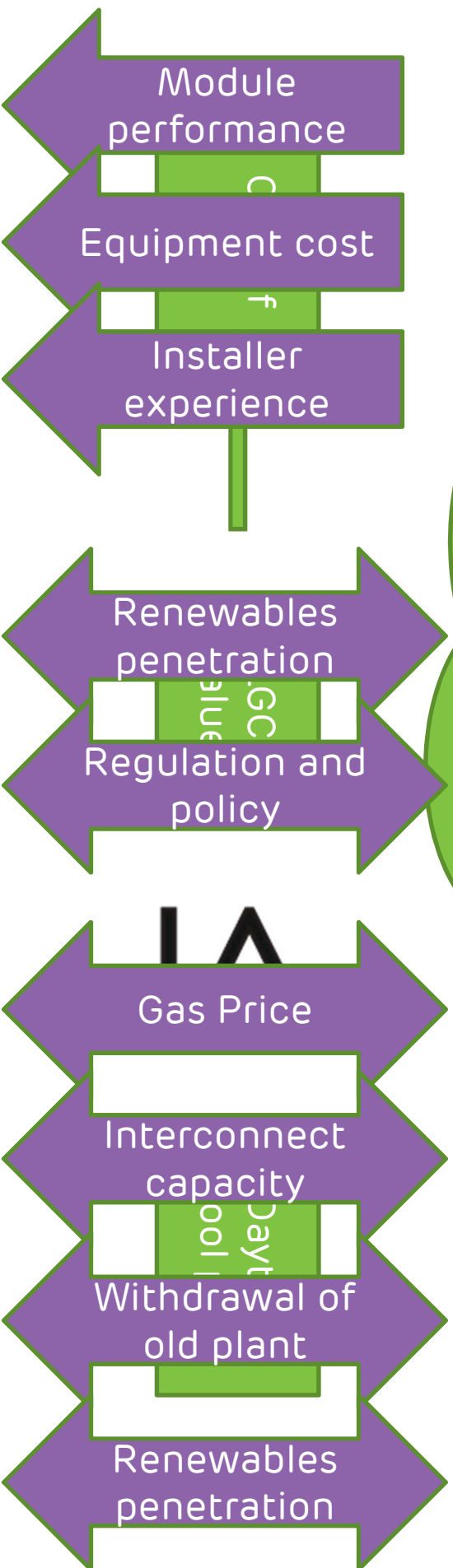
Solar value proposition

If the following equation is true, then there is a value proposition for large scale solar



Solar value proposition

If the following equation is true, then there is a value proposition for large scale solar



For the large scale energy user

- There is an opportunity to lock in solar power at a net cost (after sale of LGC) less than the historic average cost of day time spot power
- Opportunity to reduce exposure to gas pricing
- Opportunity to reduce physical exposure to future carbon costs
- Opportunity to supply green services and products



Adani - Who we are

- Adani is an Energy Company with a principal interest in developing and owning energy infrastructure
- We provide infrastructure to suit the energy policy of the nations in which we operate
- Adani is the largest Indian corporate investor in Australia having invested over \$3.4 billion in port infrastructure and mining projects over the last six years
- We plan to develop 10,000 MW of solar generation by 2022
- We have a strong focus on building communities



The Adani Foundation

- The Adani Foundation is a facilitator of education, community health, sustainable livelihood and rural infrastructure with a vision of developing a sustainable future for the communities in which we operate
- Key initiatives include establishing schools, supporting government schools, establishing mobile health clinics, supporting government health centers in isolated areas and establishing clean drinking water infrastructure in poor and remote communities



Our solar experience

- The Adani Group constructed its first major solar farm in 2011
- We have recently completed construction of the world's largest single location solar farm (648 MW) in Tamil Nadu
 - Construction commenced on 100% equity to meet CoD deadline of 31 March 2016. Debt introduced after CoD (June 2016).
- We are currently constructing or developing a further forty sites to back recent PPA wins in India



648 MW Kamuthi Solar Plant – Tamil Nadu

Particulars	Volume
Total Project Area (SqKM)	15
Foundations (Nos)	380,000
Module Mounting Structure (MT)	27,000 – Fixed tilt
Solar Modules (Nos)	2,500,000 – Multi Crystalline
String Combiner Boxes (Nos)	5,500
Inverters (Nos)	576 – Central Inverters
Transformers (Nos)	154
Switchyards (Nos)	5
Perimeter Wall / Fencing (KM)	62
Length of Internal Roads (KM)	58
Length of Cables (KM)	7,500
Cement Consumption (MT)	30,000

Achievements – Productivity in a day

648 MW Kamuthi Solar Power Plant

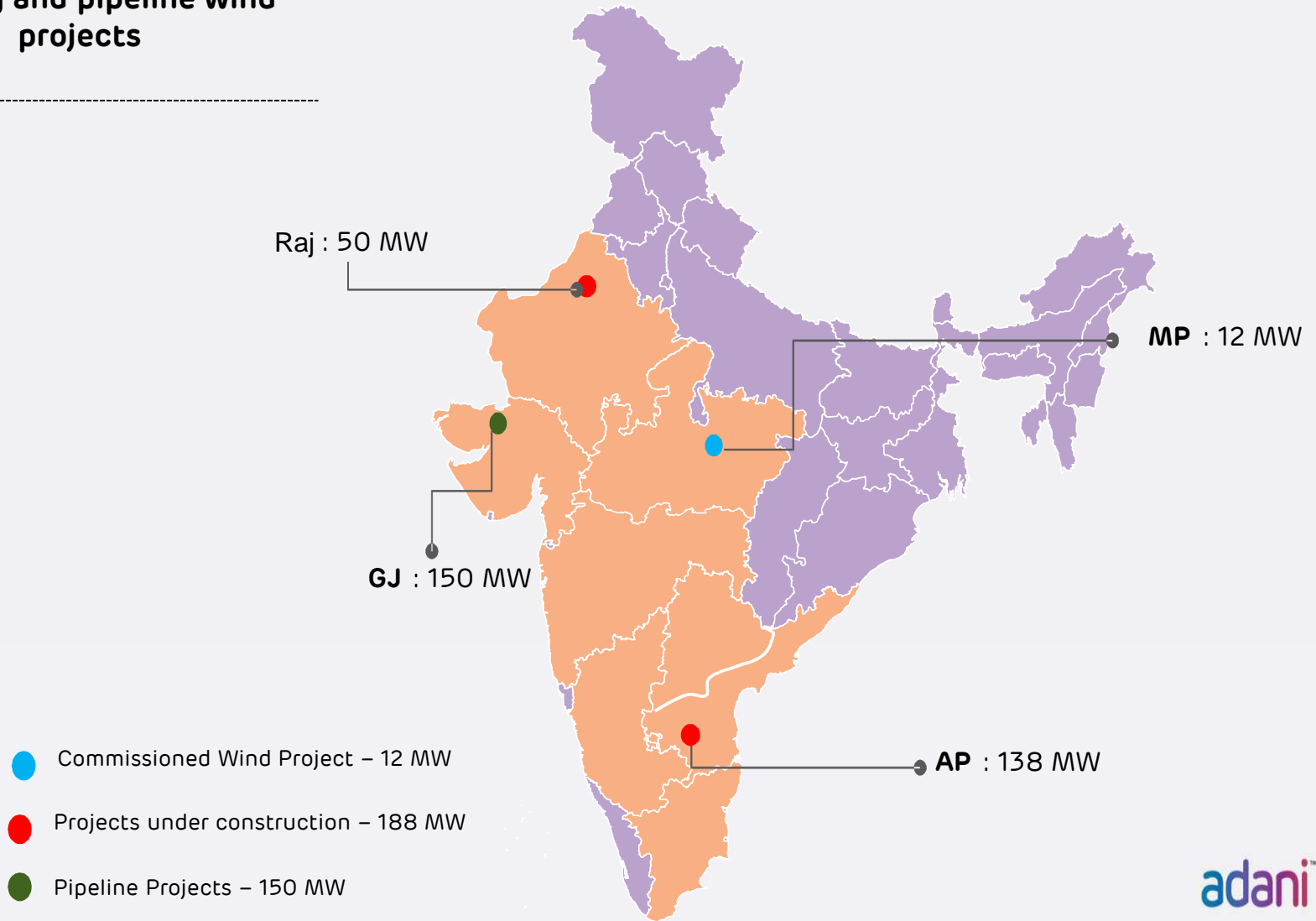
SI No	ACTIVITY	ACHIEVEMENT
1	Foundations for MMS	11.5 MW
2	MMS Erection	11 MW
3	Module installation	13.5 MW
4	Electrical cable laying	65 KM
5	Inverter Erection	20 No
6	Transformer Erection	5 No
7	Area cleaning and grading	40 Acres
8	De-stuffing	110 Containers
9	Module Handling	15 MW Module
10	MMS Handling	11.5 MW

Erection Works at 648 MW Kamuthi Solar Power Plant



Adani is targeting grid scale wind power projects in high wind potential areas

Existing and pipeline wind projects



Module Manufacturing Facility under construction



Phase	Product	Capacity
Phase 1 A (2016)	Cell & Modules	1.2 GW
Phase 1 B (2018)	Wafer and Ingots Cell & Modules	2 GW 1 GW
Phase 2 (2020)	Wafer and Ingots Cell & Modules Polysilicon	1 GW 1 GW 20,000MT

We plan to develop entire ecosystem under one roof for solar PV & associated products

Module Manufacturing Facility Under Construction



Pic 1: Main Manufacturing Building



Pic 2: Main Manufacturing Building



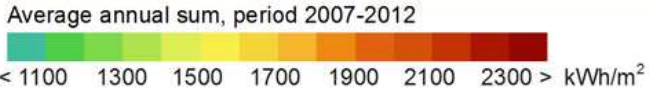
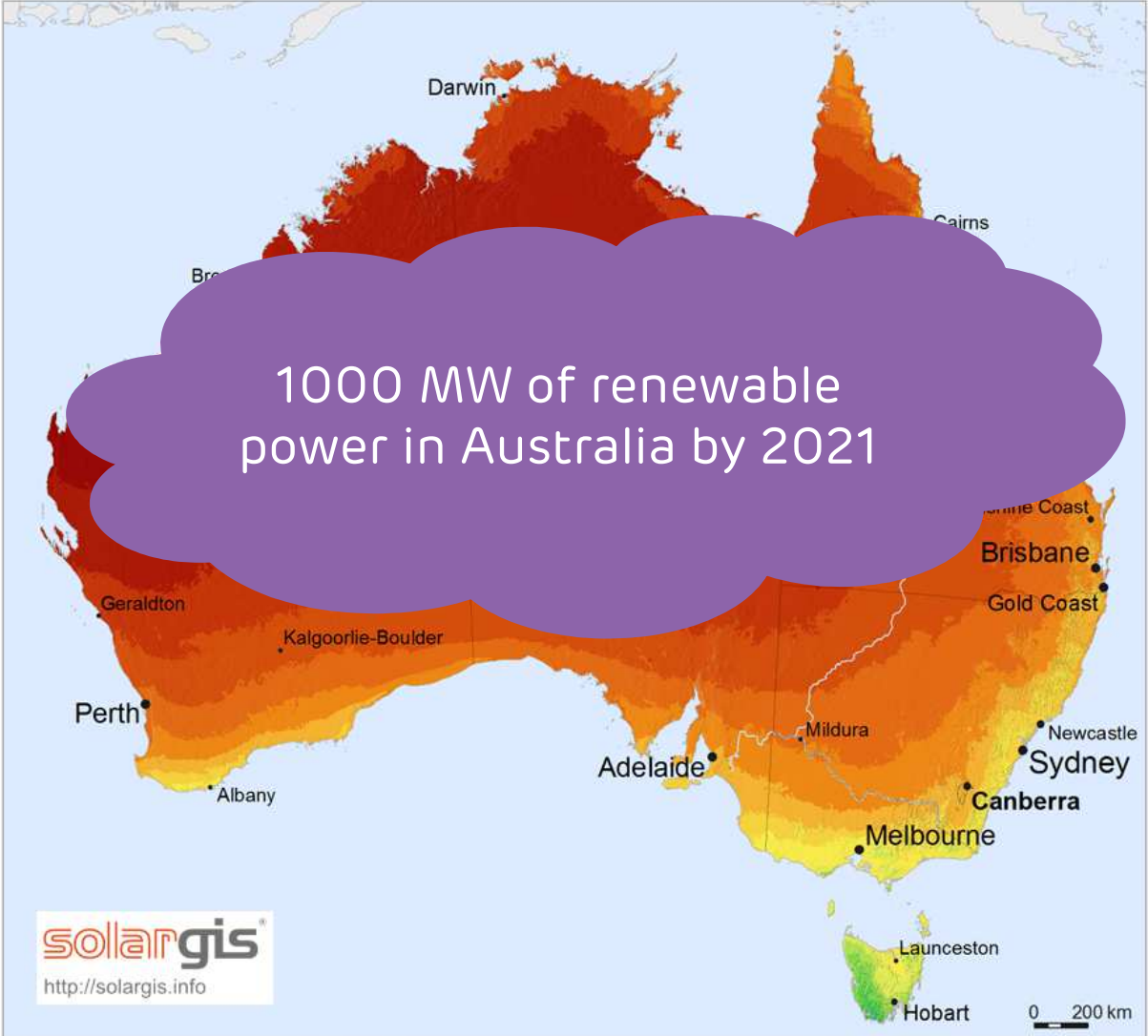
Pic 3: Transformer Yard



Pic 4: Warehouse Building

Adani's plans in Australia (2016-2021)

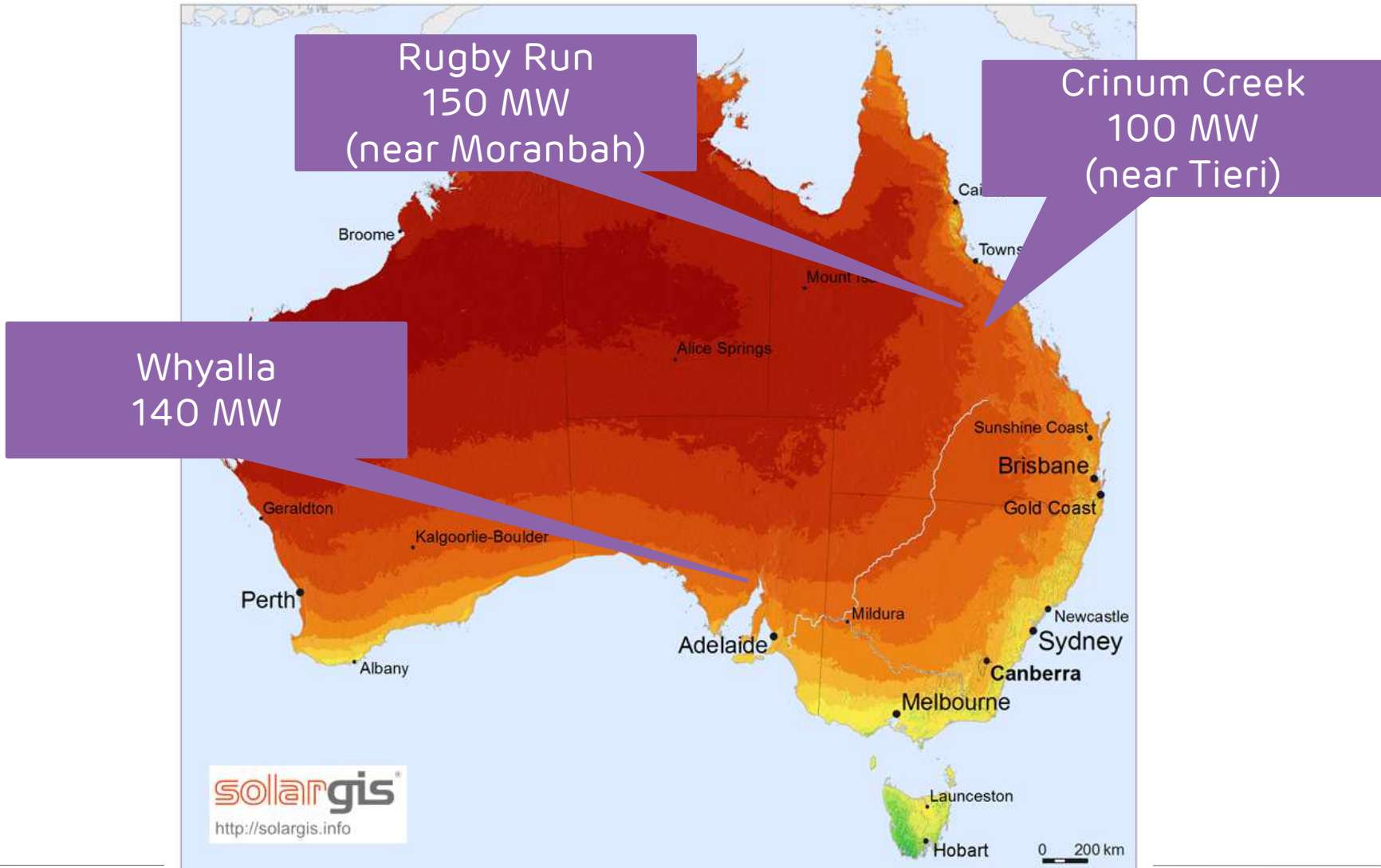
Global Horizontal Irradiation Australia



SolarGIS © 2013 GeoModel Solar

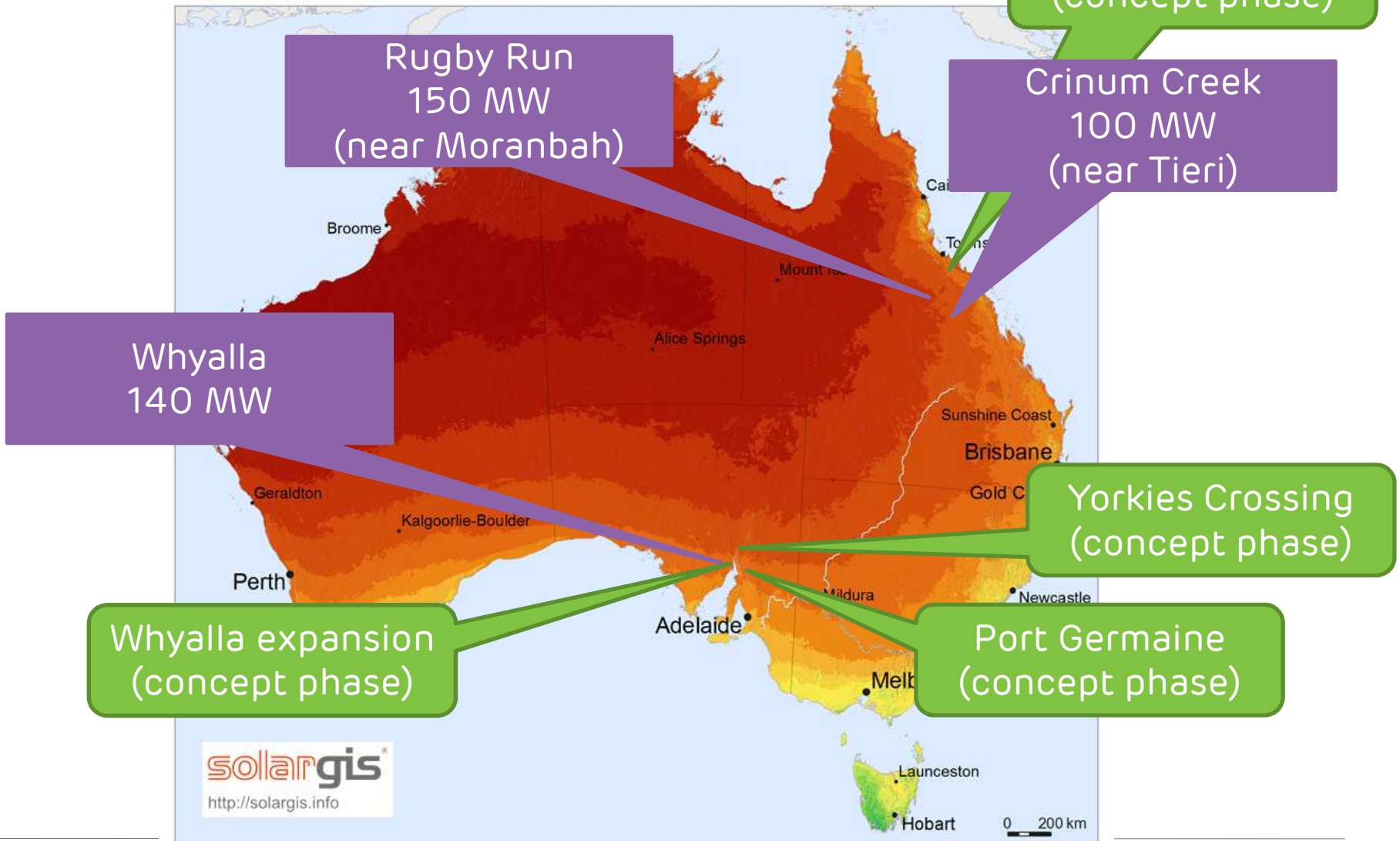
Adani's plans in Australia (2016-2019)

Global Horizontal Irradiation Australia



Adani's plans in Australia (2016-2021)

Global Horizontal Irradiation



Whyalla Solar Farm

- Location: Approx. 5 km North of Whyalla
- Technology: Photo-voltaic, single axis tracking
- Capacity: 100-140 MW site (phase 1)
300-500 MW ultimate
- Connection : Whyalla Central 132 kV system
- LGA: City of Whyalla
- Jobs: Construction 100-150
Operations 3-4
- Land use: Vacant



Progress

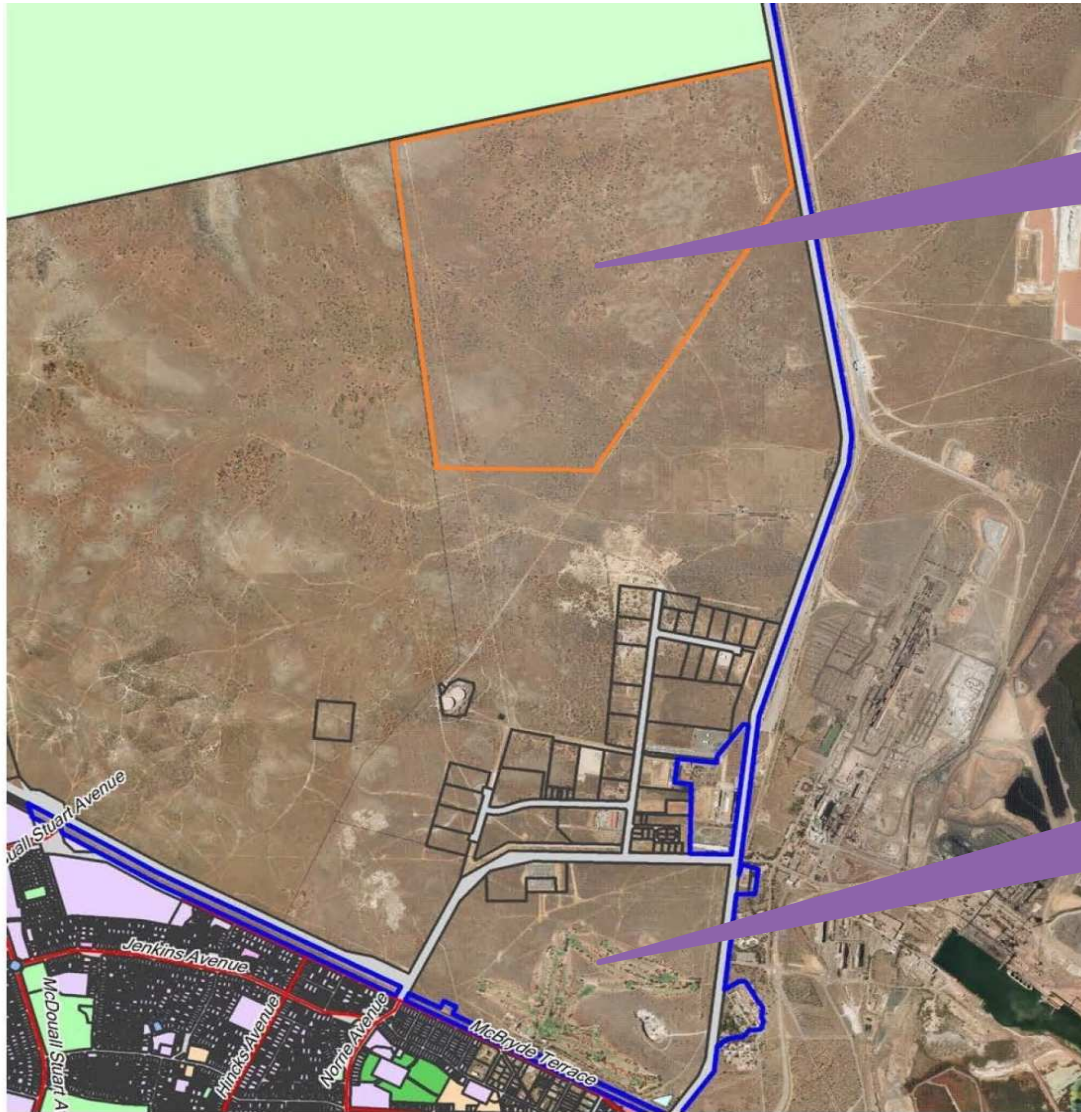
- Land: Progressing land agreement and arrangements with the City of Whyalla
- Engineering: Tender design in progress
Geotechnical to commence in September
- Approvals: Crown Sponsorship requested (with support of the City of Whyalla)
- Procurement: Initial discussions with Whyalla and Upper Spencer Gulf businesses



Indicative timeframe

Activity	2016		2017				2018	
	Q3	Q4	Q1	Q2	Q3	Q4	Q1	Q2
Approvals								
Contracting and design								
Construction								
Practical completion								
Commercial operations								

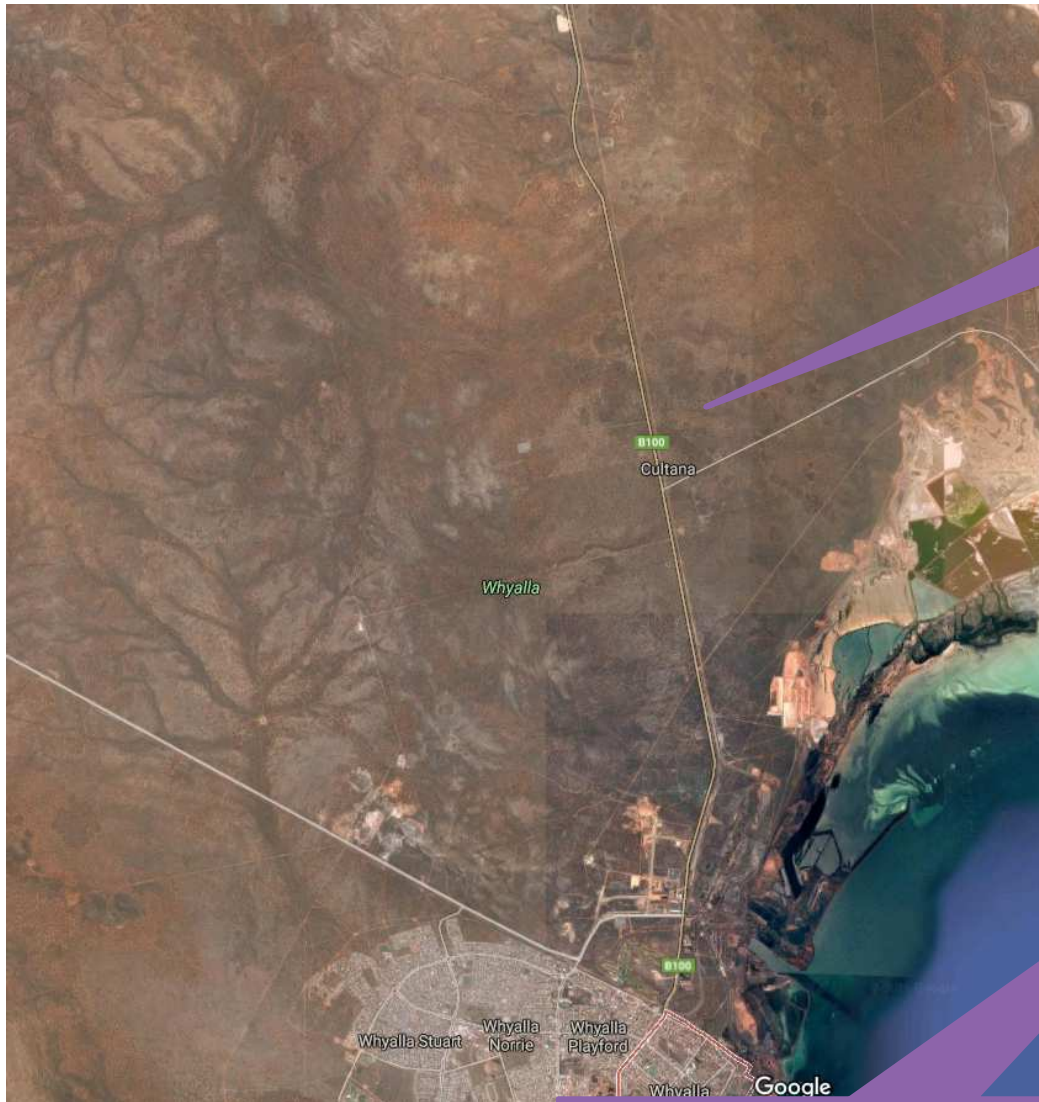
Our plans for Whyalla – Stage 1



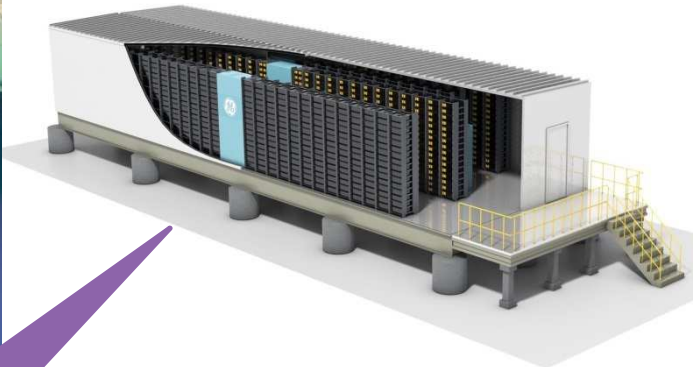
Project Site

Golf course

Future possibilities



Expansion into Cultana Industrial Estate



Utility scale storage

Why Whyalla?



- Supporting infrastructure
- Skilled workforce
- Engineering capacity and capability
- An attractive place to live

We see no reason why Whyalla and the Upper Spencer Gulf cannot supply the bulk of the services, labor and support for the construction, operation and maintenance of a major solar farm.

Further, we see Whyalla as a potential engineering and support hub to support a regional fleet of solar farms.

Opportunities for Whyalla and Upper Spencer Gulf

- Leverage Whyalla's location, people, businesses and infrastructure to initiate itself as a major center for renewable power
- Grow capability in businesses and individual careers to support the growth of the solar industry in Australia
- Establish itself as a support center for solar power



Grow with Adani



Opportunities for Whyalla and Upper Spencer Gulf businesses - **Construction**

- Design and engineering
- Cultural heritage and environmental surveys
- Geotechnical and survey
- Civil works and trenching
- Steel supply
- Piling
- Structure fabrication and supply
- Electrical switch room and inverter room fabrication and supply
- Structure and module install
- Electrical install
- Switchyard electrical
- Commissioning
- Accommodation, office services



Opportunities for Whyalla and Upper Spencer Gulf businesses - **Operations**

- Inverter and electrical maintenance
- Module cleaning
- Tracking system maintenance
- Security
- Grounds keeping
- Engineering and asset management support



Industry engagement

- Adani has commenced industry engagement with a number of firms and groups
- Several visits to Whyalla to discuss capability with firms
- Hope to place our first orders with local firms soon
- ICN portal has been set up
- Our procurement and construction packages will allow Whyalla and Upper Spencer Gulf businesses to put their 'best foot forward'
- Recruitment of Whyalla based Project Manager in progress
- **Please register your firm's interest on our ICN portal**



Grow with Adani

1. Adani has the commitment to execution and the horsepower to make a major project in Whyalla and a fleet of Australian solar farms happen.
2. Adani has the flexibility and the interest in establishing its support office for the Australian solar business in Whyalla.
3. Adani's fleet of Australian solar projects opens up a supply chain for Whyalla and Upper Spence Gulf businesses who choose to grow with Adani.

adani™



adani™