



WASTEWATER TREATMENT PLANT AND LANDFILL JOINT COMMITTEE

14 FEBRUARY 2018

PORIRUA WASTEWATER CONSENTING

PURPOSE

The purpose of this report is to inform the Committee about the collaborative process taking place with the aim of securing resource consent for the wastewater treatment plant activity and network overflows.

RECOMMENDATIONS

That the Wastewater Treatment Plant and Landfill Joint Committee:

1. Receive the report;
2. Note the strategy for securing resource consent for the wastewater treatment plant operations and network overflows.

BACKGROUND

1. The Porirua wastewater network and treatment plant have capacity and condition issues which contribute to poor water quality in the catchment.
2. The discharge consents from the Porirua wastewater treatment plant expire in 2020 and must be re-consented.
3. Overflows from the wastewater network are currently not consented and new consents must be applied for.
4. A collaborative approach to consenting has been adopted involving Greater Wellington, Ngāti Toa, Regional Public Health, Porirua City Council and Wellington Water.

ATTACHMENT

Presentation- Porirua Wastewater System Network Overflows and WWTP consenting process

Report prepared by: Tamsin Evans
CHIEF OPERATING OFFICER



Porirua Wastewater System

Network Overflows and WWTP
consenting process

Porirua Wastewater System



Our water, our future.

Wastewater treatment plant



Original plant 1989

- several upgrades since
- Currently about 82,000 popn.

Effluent monitoring

Environmental monitoring

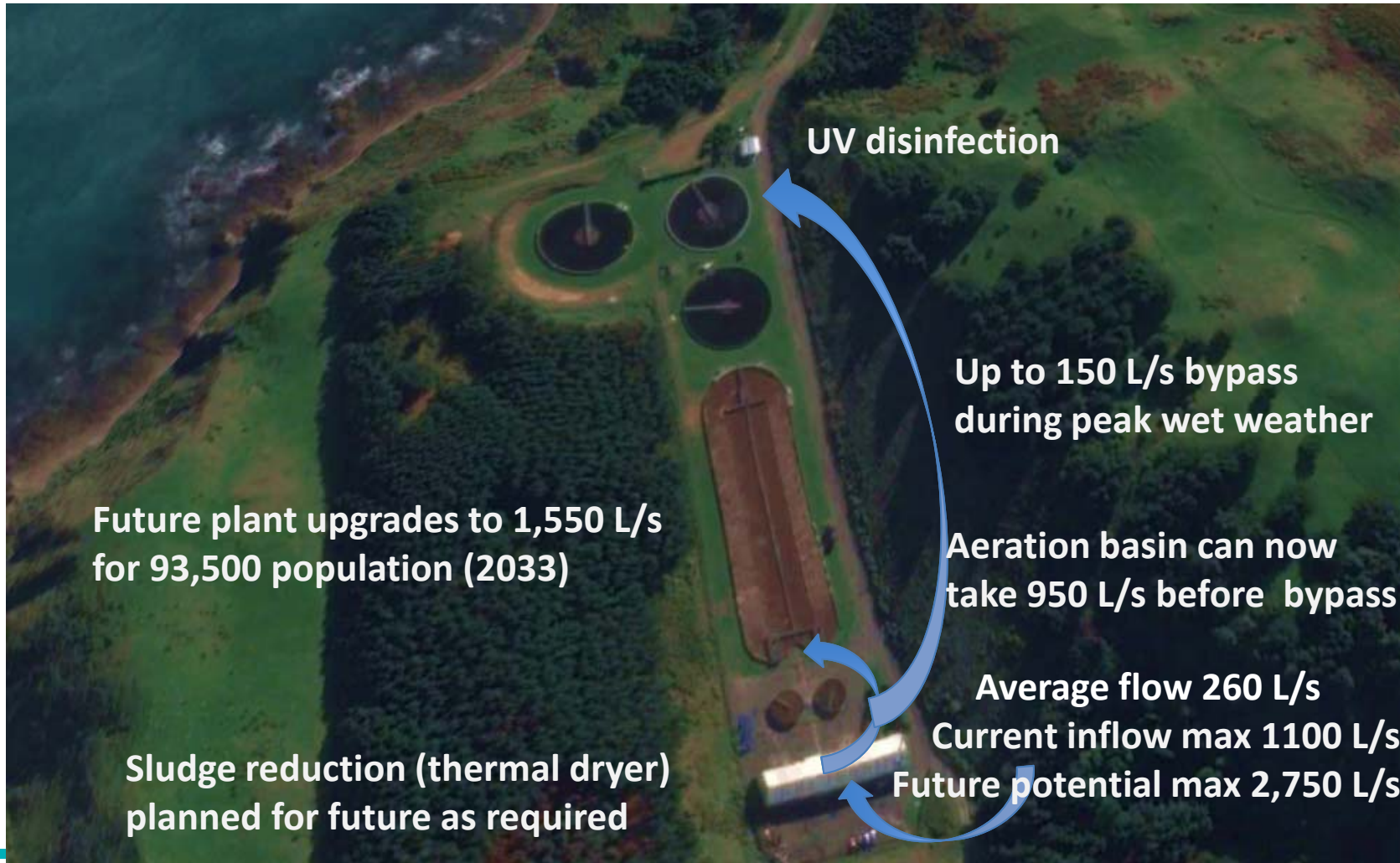
Consent compliance poor

Consent expires 2020



Our water, our future.

Porirua WWTP



Our water, our future.

Rukutane Point Outfall



Our water, our future.

Unconsented wet weather overflows - CBD Overflow Chamber



- Wastewater overflows from this location on average 12 times a year



Our water, our future.

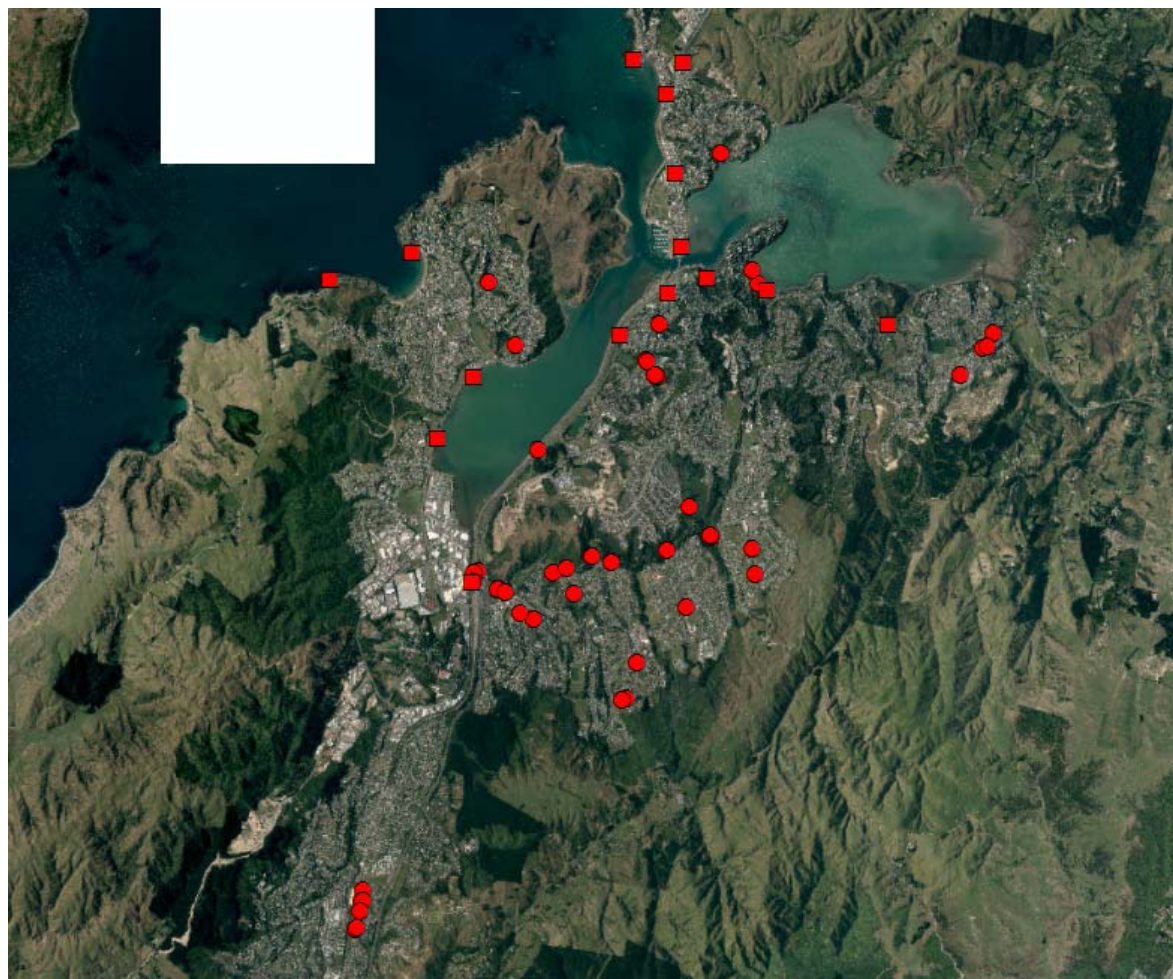
Unconsented Network Overflows



Background

Our water, our future.

Confirmed overflow locations



Our water, our future.

Porirua Wastewater Consenting Programme



VISION

A healthy and protected harbour, catchment and coastal environment supported by infrastructure that sustains healthy communities minimises adverse effects and facilitates growth.

PROBLEMS

1. The wastewater network and treatment plant have capacity and condition problems which contribute to poor water quality in the catchment.
2. The discharge consents from the Porirua wastewater treatment plant expire in 2020 and need to be re-consented.
3. The overflows from the wastewater network are currently not consented and new consents must be applied for.

Our water, our future.

Programme Objectives



OBJECTIVES

- a) The public health protection and other benefits of the wastewater scheme are recognised and associated risks reduced.
- b) Wastewater management solutions that:
 - (i) Are sustainable, enduring and resilient.
 - (ii) Minimise adverse effects on water quality.
 - (iii) Are affordable and value for money.
 - (iv) Take an integrated approach to supporting a healthy catchment, waterways, the harbour and wider coastal environment.
 - (v) Progressively address wastewater network overflows.
- c) Decision making processes are evidence based.
- d) Wastewater management solutions are developed in partnership with Ngati Toa Rangatira.
- e) The community and key stakeholders are actively involved in developing wastewater management solutions.
- f) Wastewater management solutions support long term growth and investment and the economic development of the city and sub-region.
- g) A best practicable option (RMA definition) approach for the management of the wastewater scheme is adopted.

Our water, our future.

Identified Issues



ISSUES

- Poor existing **water quality** in the Porirua Catchment
- Frequent wet weather wastewater **network overflows** into freshwater and coastal water and WWTP overflows into coastal water
- **Inflow and infiltration** of stormwater into the wastewater network
- **Aging network** prone to failures and under capacity to accommodate future growth
- Treatment plant **capacity and performance**
- The **interconnected** nature of the wastewater network and treatment plant
- The **regulatory framework** at a local, regional and national level is undergoing significant change, including through the Porirua Whaitua
- Consenting an **integrated solution** under the emerging regulatory framework will be challenging
- Obtaining support from **stakeholders** and the community for a preferred solution
- The complex and detailed nature of **information** to support resource consent applications
- **Limited funding** to bring forward network and treatment plant improvements

Our water, our future.

CONSENT STRATEGY KEY COMPONENTS

- A single comprehensive wastewater network story
- A single integrated option assessment and engagement process
- Multiple separate resource consent processes
- A collaborative approach to consenting with Greater Wellington and Ngati Toa
- A road map approach for long term reduction in network overflows
- Maximum duration consent for WWTP discharges
- Optimised network and treatment solution
- Comprehensive assessment of wastewater management alternatives

Consenting Process

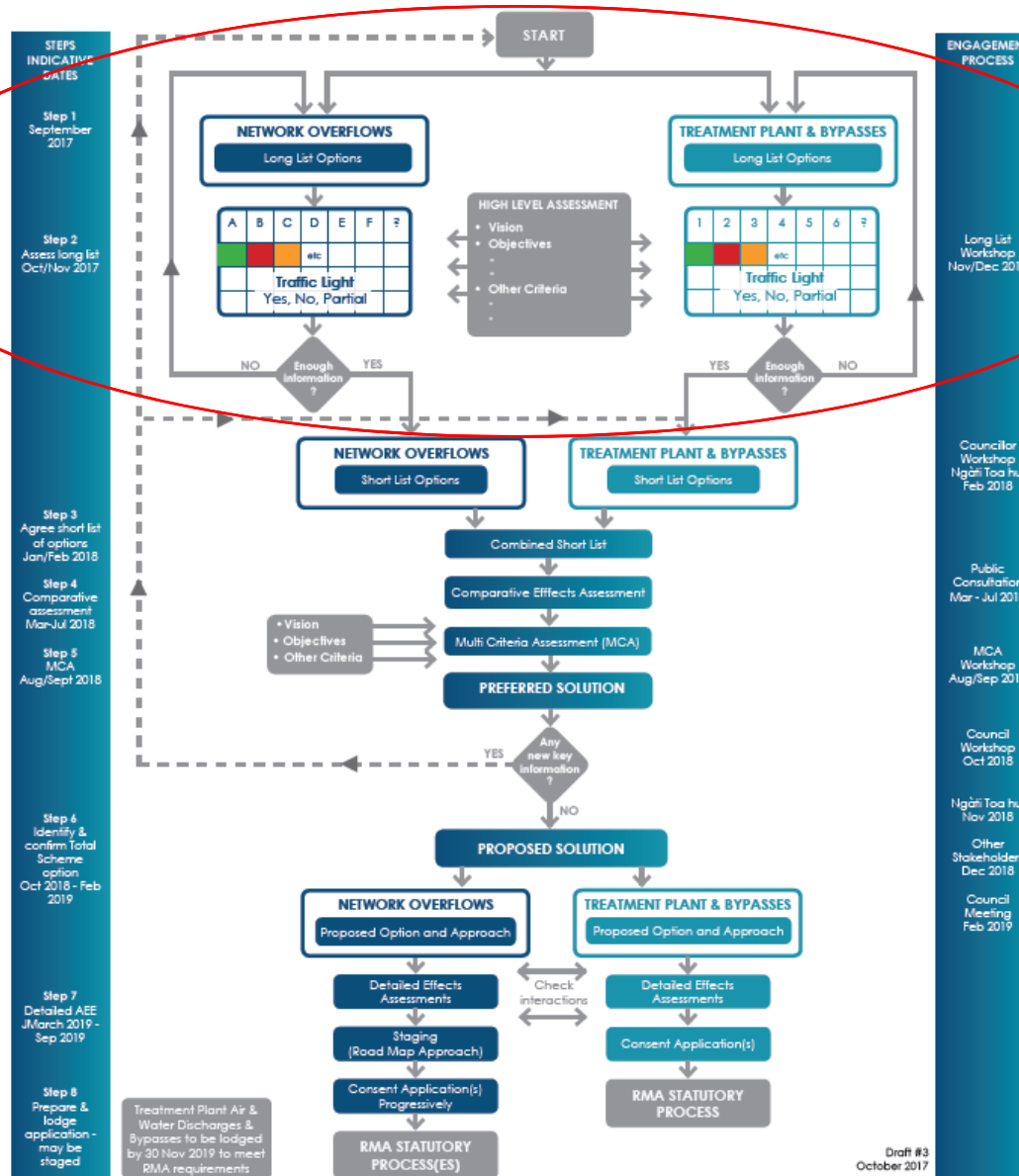


What are we consenting?

- Investigation and technical option assessment work completed to date - much good work done
- The options now need to be considered within a broad RMA context
- Wastewater discharges to fresh water are a non-complying activity under the NRP and *very* difficult to consent
- RMA option assessment process has commenced

Our water, our future.

Identifying a preferred option



Currently in long list phase

Our water, our future.

Consenting Process (continued)



Engagement focus

- Need to *inform* on work done to date and *engage* on potential options
 - Multi-channel engagement proposed, reaching out to all interested and affected groups, parties and stakeholders
 - Community input essential to identifying a 'preferred option'
 - Co-ordinated with engagement on the Porirua WWTP main discharge consent renewal
-

Our water, our future.

Consenting Process (continued)



Potential short term and long term outcomes?

- Any preferred option will be subject to PCC LTP funding and council priorities
- Long term solution based on principles of adaptive management, flexibility and long term investment
- Whaitua limits are currently being set
- Application of the Best Practicable Option approach

Our water, our future.

Questions & Discussion

Our water, our future.