

媒體手冊

2017 臺北世界大學運動會



Taipei 2017 Summer Universiade Media Guide

中華民國 107 年 7 月 1 日 出版

Taipei 2017 Summer Universiade Media Guide

FISU OFFICIAL PARTNER



Premium Official Partner



Official Partner



Official Sponsor



Official Supplier



WELCOME MESSAGES

Welcome Messages

1 President of FISU

Dear friends,

On behalf of the International University Sports Federation (FISU), I am honored to extend a warm welcome to the representatives of all nations coming to Taipei City in August 2017 for the 29th edition of the Summer Universiade.

This will be the largest international sporting event Chinese Taipei has ever hosted and promises to be an experience that will live long in the hearts of everyone involved. Taipei City is a city of youth, vitality, health, passion and friendliness. Furthermore, Chinese Taipei has dreamed about hosting a Universiade for well over a decade. It's time has now arrived and I am certain that this Universiade will not only inspire those of us lucky enough to be directly involved but also capture the imagination of the city's wider population, young and old, male and female, and elevate the city's sporting culture to an even higher level.

More than 7,000 student athletes across 22 sports will come together from across the globe to enjoy an atmosphere of fair play and friendship, as they pursue excellence in mind, body and lifestyle. FISU's vision is to create a world where every leader in society has been positively influenced by their experience of University sport. The Universiade is our greatest asset in reaching out to the students of the

world, engaging them in sport and thereby helping them to become tomorrow's leaders. And perhaps tomorrow's leaders are among those who will be competing, officiating, working, volunteering or supporting at this Summer Universiade. It is important you all get the most from your experience here in Taipei City.

I would also like to thank all our partners and stakeholders for their enthusiastic and dedicated support of the event.

On behalf of the FISU family, I wish you the very best for a successful Summer Universiade. I look forward to your arrival in August 2017 and to celebrating the atmosphere of an international multi-sport event hosted in the University spirit.

Oleg Matytsin

Kindest regards,
Oleg Matytsin
FISU President



2 Chairperson of Organizing Committee

The Taipei 2017 Summer Universiade set for Taipei will be the biggest and most prominent international sports event ever in Taiwan. I have always wanted Taipei to be a city of health and vitality. Therefore, the Taipei 2017 Universiade will be an event not just for university athletes, but for all citizens, as the event brings sports to the forefront of life in our city. As we prepare for the gathering, we look forward to making all residents of Taipei fall in love with sports. We are building world-class facilities, training top-tier athletes, and marking Taipei more competitive on the world stage as we promote its diverse culture and creative talent to the world.

Taipei has everything you could want in international city, from its safe environment for visitors to its convenient transportation network and friendly, hospitable people. I hope Taipei will become a city of

acceptance and inclusiveness, bringing together innovation, sincerity, and thoughtfulness in a unique culture of happiness.

We welcome our friends from all around the world to get to know and experience what it has to offer. We look forward to the summer of 2017, when we will open our doors to friends from at home and abroad to visit our city of youth, vitality, health, passion and friendliness!

Sincerely,

Wen-Je Ko Wen-Je Ko

Taipei City Mayor
Chairperson of Taipei 2017 Summer
Universiade Organizing Committee



3 CEO of Organizing Committee

Taipei 2017 Universiade is a major international sporting event, a sporting feast that will witness the sweat and tears of youth, a movement to improve a city, and, moreover, a great opportunity for cross-border exchange. The organizing team made up by Taipei City Government and civil power has worked tirelessly to organize the Universiade to ensure everything goes smoothly and a splendid chapter in world sporting history is written in Taipei in August. I believe the facilities and processes that our meticulous preparatory efforts have produced will demonstrate to our media friends how diverse, vibrant, vigorous, and exciting Taipei City is. I hope you are able to capture inspirational moments in the sporting competitions and in this city. Moreover, you are able to write touching, exciting, informative, and inspiring reports!

According to FISU requirements, Taipei Universiade has prearranged the most convenient and comfortable working spaces for the media. The Main Press Center and the media areas at the venues all have easy Internet access and reliable electricity. Also, we will provide a shuttle service to allow media personnel to move conveniently between venues, airports, Athletes' Village, and media hotels. We hope these services will facilitate your work and allow you to focus on your reporting mission, so exciting sporting competitions and the culture and sights of the host city are shown around the world.

This Universiade has 21 official sports and one demonstration sport. The participation of athletes in each sport is the result of years of dedication and hard work by each one. I hope, through the media, the world will see and admire the determination, tenacity, and accomplishment of these young people.

On behalf of Taipei 2017 Summer Universiade Organizing Committee, I'd like to thank all our media friends for attending this grand sporting occasion. I hope this manual will provide you with all the information you need. I also advocate that, away from your reporting duties, you can spend some time experiencing all our youthful, vigorous, healthy, passionate, and friendly city has to offer and that you can all take fond memories of Taipei away with you when you return home.

Sincerely,

Li-Chiung Su,
Chief Executive Officer,
Taipei 2017 Summer Universiade
Organizing Committee



Welcome Messages	2	3. Media Guidelines	54
1 President of FISU	4	3.1 Opening and Closing Ceremonies	56
2 Chairperson of Organizing Committee	6	3.2 Common Coverage Guidelines	57
3 CEO of Organizing Committee	7	3.3 Photography Guidelines	58
1. Event Information	14	3.4 VMC Guidelines	60
1.1 Introduction to the name "Universiade"	16	4. Main Press Center (MPC)	62
1.2 History of Universiade	16	4.1 MPC Overview	64
1.3 FISU Introduction	19	4.2 MPC Operation Hours	65
1.4 Taipei 2017 Summer Universiade Overview	20	4.3 MPC Contacts	65
1.5 General Information	21	4.4 MPC Floor Plan	66
1.6 Visions and Goals	23	5. Venue Media Centers (VMC)	68
1.7 Slogan	24	5.1 VMC Overview	70
1.8 Emblem & Mascot	25	6. Game Schedule	90
1.9 Opening and Closing Ceremonies	26	7. Related Information	94
1.10 Universiade Taipei Online Information Channel & QR Codes	26	7.1 Lifestyle	96
1.11 Taipei 2017 Summer Universiade Organizing Committee	27	7.2 Health and Medical Information	101
2. Media Services	28	7.3 Transportation Information	102
2.1 Application	30		
2.2 Accreditation Card	33		
2.3 Day Pass	39		
2.4 Loss or Damage of Accreditation Card	43		
2.5 Media Transportation Services	45		
2.6 Media Hotels	50		
2.7 Travel Information	51		



TABLE INDEX

Table 1-1	Past Universiade Host Cities and Chinese Taipei's Participation Status	17
Table 1-2	Taipei 2017 Summer Universiade Overview	20
Table 2-1	Invited Media Allowable Registration Limit	32
Table 2-2	Venue Codes	35
Table 2-3	Access Codes	36
Table 2-4	Seat Codes	36
Table 2-5	Athletes' Village Codes	37
Table 2-6	Athletes' Village Restaurant Code	37
Table 2-7	Main Media Center Codes	37
Table 2-8	Transport Codes	38
Table 2-9	Media Transportation Services information	45
Table 2-10	Media Arrival and Departure Service Information	45
Table 2-11	Media Hotels Shuttle Service Information	46
Table 2-12	Location for Media Designated Hotels	46
Table 2-13	Media and Sport Venues Shuttle Service	46
Table 2-14	Transportation Routes for Media	47
Table 2-15	List of Media Hotels	50
Table 2-16	Schedule of Fam Tour	51
Table 2-17	List of Free admissions with Accreditation Cards	52
Table 4-1	MPC Operation Hours	67
Table 5-1	VMC Details	70
Table 6-1	Game Schedule	92
Table 7-1	Local Currency Value	97
Table 7-2	Operation Hours for General Business	98
Table 7-3	Taipei City Hospital Information	101
Table 7-4	Taipei City Sightseeing Bus Information	105

FIGURE INDEX

Figure 1-1	Taipei 2017 Summer Universiade Emblem	25
Figure 1-2	Taipei 2017 Summer Universiade Mascot	26
Figure 1-3	Taipei 2017 Summer Universiade Organizing Committee Chart	27
Figure 2-1	Accreditation Card	33
Figure 2-2	Media Accreditation Location	34
Figure 2-3	Sports Pictograms	35
Figure 2-4	Athletes' Village Day Pass	39
Figure 2-5	Main Media Center Day Pass	41
Figure 2-6	Figure of Accreditation Card Re-issuance Procedure at the MAC	43
Figure 2-7	Figure of Accreditation Card Replacement Procedure at the MAC	44
Figure 4-1	MPC Vicinity Map	65
Figure 4-2	MPC Floor Plan	66
Figure 7-1	Taipei Metro Route Map	102



1. EVENT INFORMATION

1. Event Information

1.1 Introduction to the Name “Universiade”

The name for the world university games, “Universiade”, is derived from the words “University” and “Olympiade”. The Universiade is organized by the International University Sports Federation (FISU) as an international multi-sports event for university athletes.

1.2 History of Universiade

1.2.1 Historical Evolution

1919 The International Confederation of Students (ICS) was established.

1923 The first World University Games (WUG) was held.

1949 The International University Sports Federation (FISU) was established, and the first FISU Games were held.

1959 The World University Games were held in Italy; the flag, anthem and emblem of FISU as well as the name “Universiade” made their debut.

1.2.2 Previous Games – Host Cities & Results

Table 1-1: Past Universiade Host Cities and Chinese Taipei's Participation Status

Game	Year	Country	City	Medals	Ranking
1 st	1959	Italy	Torino	Did not Participate	
2 nd	1961	Bulgaria	Sofia	Did not Participate	
3 rd	1963	Brazil	Porto Alegre	Did not Participate	
4 th	1965	Hungary	Budapest	Did not Participate	
5 th	1967	Japan	Tokyo	Did not Participate	
6 th	1970	Italy	Torino	Did not Participate	
7 th	1973	USSR	Moscow	Did not Participate	
8 th	1975	Italy	Rome	Did not Participate	
9 th	1977	Bulgaria	Sofia	Did not Participate	
10 th	1979	Mexico	Mexico City	Did not Participate	
11 th	1981	Romania	Bucharest	Did not Participate	
12 th	1983	Canada	Edmonton	Did not Participate	
13 th	1985	Japan	Kobe	Did not Participate	
14 th	1987	Yugoslavia	Zagreb	Participated for the 1 st time, but did not win any medals	

(Continued on next page)

Game	Year	Country	City	Medals	Ranking
15 th	1989	Germany	Duisburg	Did not win any medals	
16 th	1991	Great Britain	Sheffield	1 gold	20 th place/ 101 countries
17 th	1993	USA	Buffalo	3 bronze	23 th place/ 118 countries
18 th	1995	Japan	Fukuoka	1 gold, 1 silver, 2 bronze	22 th place/ 162 countries
19 th	1997	Italy	Sicily	2 gold, 1 silver, 1 bronze	18 th place/ 124 countries
20 th	1999	Spain	Palmer de Mallorca	2 gold, 2 silver	18 th place/ 125 countries
21 th	2001	China	Beijing	3 silver, 5 bronze	32 th place/ 165 countries
22 th	2003	South Korea	Daegu	3 gold, 3 silver, 5 bronze	11 th place/ 171 countries
23 th	2005	Turkey	Izmir	6 gold, 2 silver, 4 bronze	9 th place/ 133 countries
24 th	2007	Thailand	Bangkok	7 gold, 9 silver, 12 bronze	9 th place/ 152 countries
25 th	2009	Serbia	Belgrade	7 gold, 5 silver, 5 bronze	7 th place/ 164 countries
26 th	2011	China	Shenzhen	7 gold, 9 silver, 16 bronze	8 th place/ 152 countries
27 th	2013	Russia	Kazan	4 gold, 4 silver, 7 bronze	16 th place/ 159 countries
28 th	2015	Korea	Gwangju	6 gold, 12 silver, 18 bronze	10 th place/ 170 countries
29 th	2017	Chinese Taipei	Taipei		

Source: Official Website of Chinese Taipei University Sports Federation

1.3 FISU Introduction

1.3.1 The General Assembly

Currently comprised of representatives from 170 member countries, and held once every two years. Chinese Taipei officially became a FISU member in 1987.

1.3.2 The Executive Committee

The Executive Committee is elected once every four years and comprises 23 voting members, including 1 President, 1 first Vice-President, 4 Vice-Presidents, the Treasurer, 1 first Assessor and 15 Executive Members. The committee also has 5 intercontinental representatives (non-voting members). The committee meets twice a year to discuss and decide on major issues and to maintain the operation of FISU.

1.3.3 Various Committees

FISU has also established various committees to assist with administrative affairs, including: International Technical Committees, Medical Committee, International Control Committee, Committee for Sports Regulations, Finance Committee, Committee for Marketing and Strategic Partnership, Education Committee, Student Committee, etc.

► Source: Official Website of the Chinese Taipei University Sports Federation at <http://web2.ctusf.org.tw/index.php>



1.4 Taipei 2017 Summer Universiade Overview

Taipei City will host the Summer Universiade in August 2017. For the university student athletes of the world, this is a very important sporting event. Besides demonstrating the strength and beauty of sport, the cultural essence, education, and rich spirit of humanity of a city can also be presented.

The 29th Summer Universiade will be held over the course of 12 days with competition venues spreading across 5 counties and cities, including Taipei City, New Taipei City, Taoyuan City, Hsinchu City and Hsinchu County. Fourteen compulsory sports, seven optional sports, and one demonstration sport will be held. Athletes from more than 130 countries will gather in Taipei City to participate in versatile transnational and cross-cultural exchanges.

Table 1-2: Taipei 2017 Summer Universiade Overview

Schedule	Aug. 19-30, 2017 (12 days)
Organizer	International University Sports Federation (FISU)
Organizing Committee	Taipei 2017 Summer Universiade Organizing Committee
Venue Distribution	Taipei Stadium and other stadiums in Taipei and across New Taipei City, Taoyuan City, Hsinchu City and Hsinchu County.
Sports	<p>21+1 Sports</p> <ul style="list-style-type: none"> ▶ Compulsory Sports (14 sports): Athletics, Basketball, Diving, Fencing, Football, Artistic gymnastics, Rhythmic gymnastics, Judo, Swimming, Table tennis, Taekwondo, Tennis, Volleyball, Water polo. ▶ Optional Sports (7 sports): Archery, Badminton, Baseball, Golf, Roller sports, Weightlifting, Wushu. ▶ Demonstration (1 sport): Billiards.
Participants	More than 7,000 athletes from over 130 countries
International Activities	<ul style="list-style-type: none"> ▶ FISU Gala ▶ FISU Conference ▶ Cultural activities at the Athletes' Village ▶ FISU General Assembly

1.5 General Information

1.5.1 Introduction of Our Island - Taiwan

Taiwan is long and narrow that lies north to south. It has an area of around 36,000 square kilometers (14,400 square miles) and has a population of around 23 million people. It is located off the southeast of the Asian continent in the East and Southeast Asia island arcs of the Western Pacific Rim. It has the Ryukyu Islands, Japan, not far to the north, the Philippines to the south, and is a hub for travel in Asia. It has flights to and from numerous destinations, making it a really convenient place to visit. There were foreign currency reserves of US\$425.9 billion in 2015, mainly in the form of gold, foreign currency, foreign capital in the Central Bank balance sheet and net amount of overseas assets in the financial institutions' balance sheet. Its main industry is the Information Technology industry.

1.5.2 Natural Landscape

The island is relatively small but it has a wealth of natural resources and culture. In terms of natural landscape, due to the ongoing process of tectonic plate movement, there are complex and diverse landscapes, with high mountains, hills, plains, basins, islands, a rift valley, and coastline. Adding the fact that the Tropic of Cancer also passes through our island, it has tropical, subtropical and temperate natural ecologies. It has a high proportion of endemic species, such as the Formosan Landlocked Salmon, Formosan Macaque, Formosan Black Bear, and Swinhoe's Pheasant, making it a place of global importance for conservation.

There are 9 national parks and 13 national scenic areas, containing the cream of its natural scenery and tourism resources that were established to maintain the outstanding natural landscapes and protect the natural ecological environment. Visitors can view Taroko Gorge, a magnificent high mountain gorge; they can ride on a small mountain railway train and move through the forest to see the sunrise and cloud sea at Alishan, climb the highest mountain in Northeast Asia, Mountain Yu, and view majestic mountains and the stunning scenery that changes with the seasons; they can go to Kenting,

nicknamed Asia's Hawaii, in the south and enjoy a relaxing vacation by the sea; located in central island, Sun Moon Lake is a sparkling pearl in the high mountains that offers beautiful lake and mountain scenery; the East Coast and the East Rift Valley have the most pristine natural environment; the local characteristics, culture, historic sites of outlying islands Kinmen, Matsu and Penghu combine to give them unique charm. This is what Ilha Formosa (beautiful island) offers, and much more!

1.5.3 Host City: Taipei

Taipei is a city that never sleeps. The city is active 24-hours a day and is home to the passionate and exciting nightlife. The urban tapestry of the Taipei metropolis is marked by crowds of avid readers seated in silence in bookstores, and cyclists pedaling along bicycle lanes amidst the gentle breeze. Taipei is a city where dreams are made. The city can be explored and enjoyed in any way you feel most comfortable with.

Travelers in Taipei will be spoiled by the city's unparalleled diversity of shopping areas, cultural and creative boutiques, and gastronomic culture. Professionals who need to take some time off from their busy schedules to work out or relax can easily access exercise centers, hiking paths, and hot springs located amongst the city's 12 districts by taking a ride in any of the city's convenient transport systems. Such alluring urban experiences allow Taipei to draw numerous returning visitors every year.

Taipei will be hosting the 2017 Summer Universiade. The metropolis will use her most famous passion and friendliness in receiving every visitor. Like the energetic and determined young athletes from all over the world, Taipei is a city filled and humming with vitality. She will leave a memorable experience in your heart.

More About Taipei (<http://www.travel.taipei/en/>)

1.6 Visions and Goals

Goal: A Better Taipei

The Taipei 2017 Universiade is not just an event about competitive sports; it is also a city-transforming social movement. The 2017 Summer Universiade shall act as the main driver of Taipei's Four-Year Leap program for re-energizing the constitution of our city and rediscovering the glory fitting of a nation's capital.

1.6.1 Changing the Urban Constitution

Changes shall encompass both software and hardware elements. Hardware facilities and amenities shall match those of first-rate cities around the world. Software enhancements shall also make Taipei the benchmark city of the Chinese-speaking world.

1) Hardware:

Construction of world-class Green athletic facilities, low carbon and energy efficient transport systems, low carbon meals and accommodations with local features, and comfortable and ergonomic safety facilities.

2) Software:

Enhance the standards and knowledge of competing athletes and referees, establish a reserve of international sporting event volunteers, improve public athleticism, develop a team of professionals in the management of international sporting events, and market urban features and local culture.

1.6.2 Rediscover the Glory Fitting of a Nation's Capital

1) Re-establishing our confidence:

To change our nation, we must begin with our capital Taipei. To change Taipei, we must start with our cultural elements. This transformation shall span every creed and ethnicity to achieve real and tangible improvements.

2) Create a cohesive identity:

Sports does not differentiate between ethnicities or political identity. Through supporting Chinese Taipei athletes upon the arena, we will be able to forge a common identity for the residents of Taipei.

3) Rediscover our glory:

Successful hosting of this major sporting event will boost our international recognition. Stellar achievements of our athletes will win glory for our nation's capital.

The hosting of the Universiade will boost our international image and forge cooperative links across multiple sectors and cities. The Universiade includes public participation to improve public athleticism and sustainable urban development, transforming our city into a transparent, just, healthy, and safe city as well as sharing her rich cultural elements and the human elements of friendliness and care. Together we shall help create a Better Taipei.

1.7 Slogan **For You • For Youth**

Taipei 2017 Summer Universiade will bring together top athletes from 150 countries to stride for glory in Taipei, show their passion while competing for medals and break through their self-imposed limits with effort and sweat.

The stage for Taipei 2017 Summer Universiade is ready for athletes on their dreams to make this the best-ever Universiade. These elite athletes will courageously pursue their dreams and energize people through sport.

For You, For Youth.

1.8 Emblem & Mascot



Figure 1-1: Taipei 2017 Summer Universiade Emblem

TAIPEI 2017
29TH SUMMER UNIVERSIADE



The Taipei 2017 Summer Universiade logo makes use of the Chinese character “北” (meaning Taipei and north) combined with the “U” shape designated by FISU that symbolizes UNIVERSIADE, UNITED, and UNIVERSITY, representing the passion and vitality of the young generation and displaying limitless hope and positivity. The Taipei 2017 Summer Universiade logo's upward-leaping and rhythmic lines echo Taipei's constant pursuit of excellence and continual innovation.

Sport has no borders between countries, races and sexes. The five stars of the main logo are similar to the five rings of the Olympics. Blue, yellow, black, green and red represent Europe, Asia, Africa, Oceania and The Americas, respectively. It symbolize the gathering of elite university athletes from around the world to compete fairly, ignite their potential, and surpass themselves. Taiwan is a special island and its capital Taipei is a great place to experience Taiwan's culture. It is hoped that the Taipei 2017 Summer Universiade will allow Taiwan to be in the spotlight of the world, attract the world to Taiwan and let the world remember Taiwan.

Bravo the Bear, the Universiade mascot, is based on the Formosan black bear, a species endemic to Taiwan. It was chosen as the mascot in an online vote. The Formosan black bear is powerfully-built, fierce, powerful and brave, traits that echo the determined spirit of athletes, as well as representing the indomitable spirit of Taiwan. The distinctive white V on the chest of the Formosan black bear symbolizes victory. Matched together with a gold medal, it expresses the hope that all



Figure 1-2: Taipei 2017 Summer Universiade Mascot

Universiade athletes can pursue their dreams, surpass the self and win a medal. The Formosan black bear is also an endangered species. It is hoped that, in his role as Universiade mascot, Bravo the Bear will remind everyone of the importance of sustainable operation and protecting the ecological environment. In fact, the attention is not just on sporting competition, the message of the importance of protecting the natural environment is also spread by the Taipei 2017 Universiade.

Bravo the Bear's name in Chinese sounds like "brilliant" in Taiwanese, while Bravo is an expression of approval in Italian; it encourages athletes to bravely pursue outstanding results and invites athletes from around the world to be guests in Taipei. Together we shout Bravo! for this grand sporting event.

1.9 Opening and Closing Ceremonies

- ▶ Opening Ceremony: Aug. 19, 2017 (Sat.) @ Taipei Stadium
- ▶ Closing Ceremony: Aug. 30, 2017 (Wed.) @ Taipei Stadium

1.10 Universiade Taipei Online Information Channel & QR Codes

- ▶ Official Website: <https://2017.taipei/bin/home.php?Lang=en>
- ▶ Facebook: <https://www.facebook.com/taipei2017>



1.11 Taipei 2017 Summer Universiade Organizing Committee

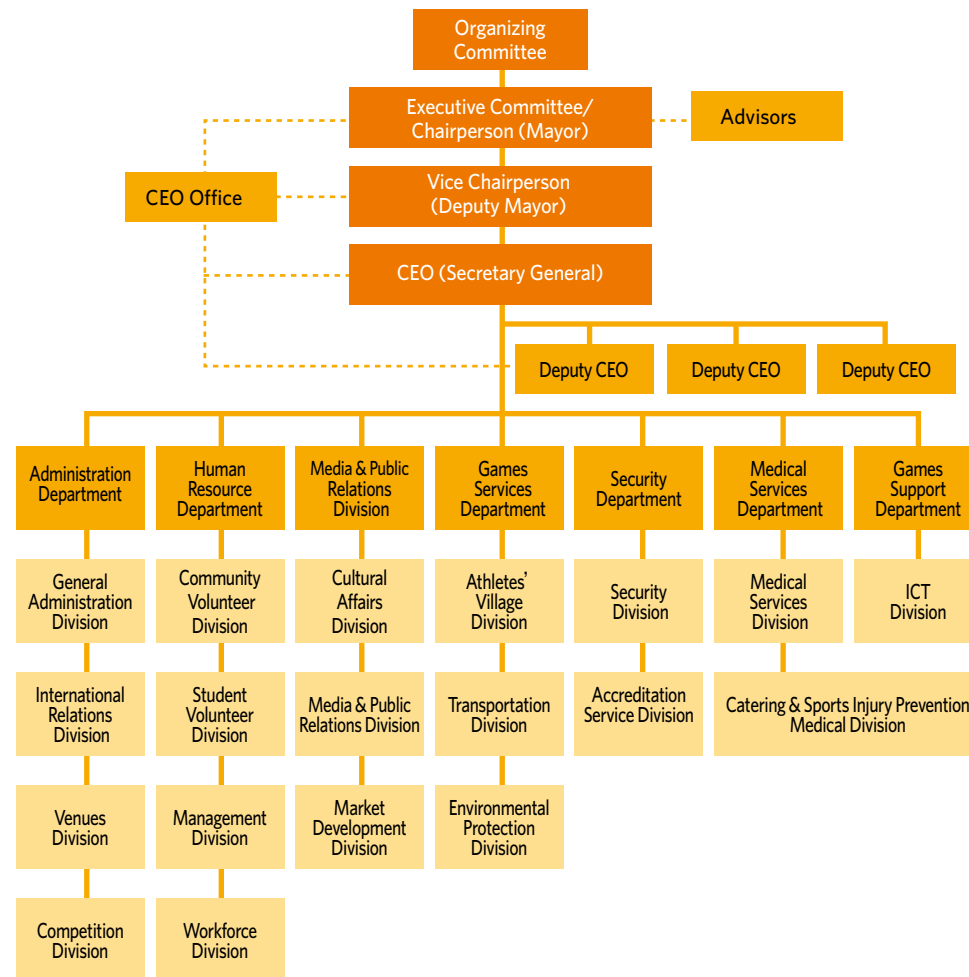


Figure 1-3: Taipei 2017 Summer Universiade Organizing Committee Chart

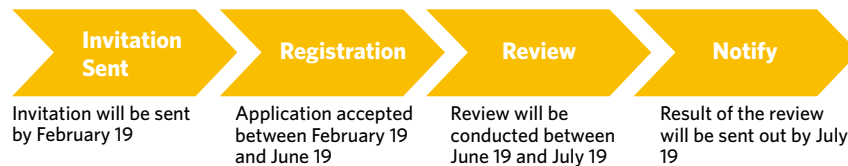
2. MEDIA SERVICES

2. Media Services

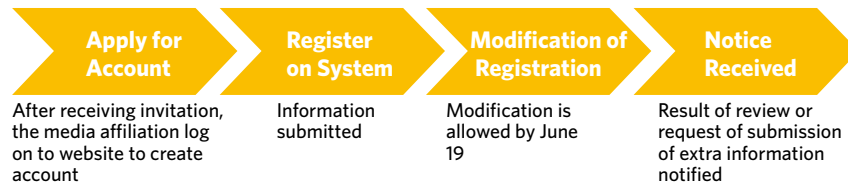
2.1 Application

2.1.1 Application Procedures

Procedures of the Taipei 2017 Summer Universiade Organizing Committee (TUOC)



Media Application Procedure



2.1.2 Application Notice

- 1) **Accepting Time and Methods:**
Please log on and register at Media Registration Website of Taipei 2017 Universiade (<https://goo.gl/xROG2b>) between February 19th and June 19th, 2017. All applications must be submitted online, no applications by facsimile and e-mail will be accepted.
- 2) Please obtain the account and password at Media Registration Website of Taipei 2017 Universiade and complete the form with following information: Name, Nationality (as the headquarter of the affiliation), ID/Passport Number, Date of Birth of the applicant (matching ID/passport) and the Name, Title, Telephone and E-mail information of the Affiliation. All information obtained from the system will only be used for Taipei 2017 Universiade and will never be provided to any third party.

- 3) **Photo Guidelines:** Applicants should upload his/her headshot photo with the following guidelines:

- ① The photo must be colored, taken in the last six months with frontal view and no hats on.
- ② The background of the photo shall be white. The light sources shall be uniform and without shadow and/or flash.
- ③ The photo shall be in neutral colors and clearly focused without defaced and crease, and is unedited.
- ④ The photo must solely present the image of the applicant.
- ⑤ The eyes should be open and directly face the camera with natural facial expression only.
- ⑥ None of the part of the eyes shall not be covered by hair. The headshot photo must show clear facial outlines.
- ⑦ The eyes must be shown clearly if wearing glasses. No flash reflection must be shown on the lenses, and no colored-lenses are allowed.
- ⑧ Size of the photo: 35mm x 45mm
- ⑨ Resolution: 300dpi or above
- ⑩ Pixel of the photo: 420px x 525px or above
File format of the photo: JPG/JPEG/PNG
Size of the file: 100kb-512 kb

- 4) **Review of Applications**

- ① Please verify that the information and photo are correct and complete before the registration is submitted. Media can make modifications of the registration information by logging on with personal account and password by June 19th. TUOC and FISU reserve the rights to notify the applicants to submit the missing information shall the registration information are found incomplete. No credentials will be issued shall the applicant fail to submit missing information or submit missing information by the deadline. Related information will be reviewed by security agency and border control, and TUOC will grant the accessibility to applicants passing the review and to distribute the credentials at MPC during the

- tournament (starting August 16, 2017) at Validation Center at MPC.
- ② The applicant shall assume the legal liability shall the information submitted are fabricated or false, and TUOC will no longer accept the applications from the applicant.
 - ③ The applications from local medias are reviewed by TUOC, and applications from foreign medias are reviewed by FISU.
 - ④ Application for media are invitation-based. TUOC reserves the rights to the issuance of the visiting pass.
 - ⑤ No on-site application will be accepted. No coverage is allowed for non- validated media.
 - ⑥ Please send application based on following quota. The application will be rejected in case applied quantity is beyond the quota.
 - ⑦ The applicant with both print & photographer identities, please register as "Photographer" for access to camera seat at venue.

Table 2-1: Invited Media Allowable Registration Limit

	Print	Photographers	Total
TV	8	8 (No Game Footage Allowed)	16
Radio	4	1	5
News Agency	8	8	16
Newspaper	8	12	20
Online Media	6	6	12
Other Prints	4	4	8

5) Credentials Pick-Up

- ① Credentials must be picked up in person with ID/Passport at Validation Center in MPC between August 16th and 30th, 2017. No mailing service will be provided. TUOC reserves the rights to cancel the issuance shall the information presented not match with the registered files. No on-site application will be allowed.
- ② The operation hours of Validation Center at MPC is as followed: 8am-8pm between August 16th and 30th. Operation hours between August 16th and 19th will be extended to 10pm.

2.2 Accreditation Card

2.2.1 Accreditation Card

The participants registering online such as the Delegations, FISU Family, VIPs, International Technical Officials, media, the VIPs invited by OC, Sponsors, Future Universiade OC Observers, staffs, volunteers and others, will receive the accreditation cards with different access rights and privileges defined in a separate guideline after accreditation.



Figure 2-1: Accreditation Card

2.2.2 Media Accreditation Center

- 1) Location: MPC at Songshan Cultural and Creative Park
- 2) Address: No.133, Guangfu S. Rd., Songshan Dist., Taipei City (3rd warehouse)
- 3) Client Group: Host Broadcaster, Right Holders, Foreign and Domestic Media
- 4) Operating Hours: Aug. 16-19, 2017 (08:00-22:00)
Aug. 20-30, 2017 (08:00-20:00)



Figure 2-2: Media Accreditation Location

2.2.3 Code and Pictogram Figure of Accreditation Cards

The information on the accreditation cards shows the rights and privileges of the cardholder, indicated by designations, codes, figures or pictograms.

1) Venues

► Venue Code

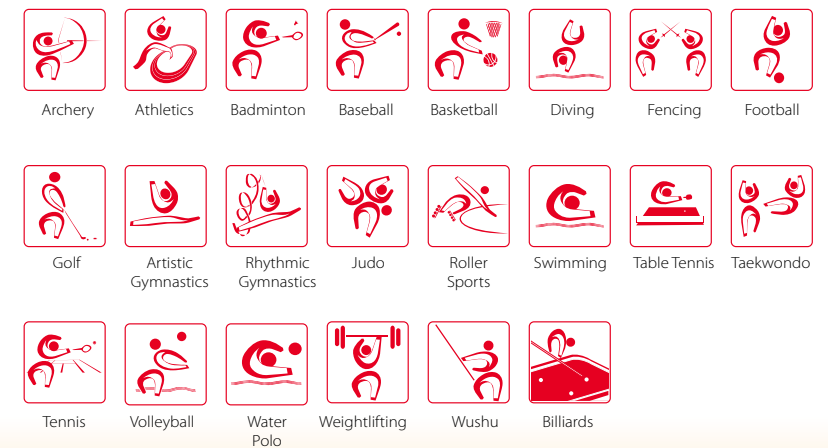
The cardholder will have access to the competition venues indicated by the codes on the accreditation card.

Table 2-2: Venue Codes

Code	Meaning
∞	All sports Venues
	Designated Competition Venues
-	No Access

Figure 2-3: Sports Pictograms

Sports Pictograms



► Access Code

The cardholder will have access to the specific area indicated by the codes on the accreditation card.

Table 2-3: Access Codes

Code	Meaning
0	All Access
1	Competition Area
2	Athlete Preparation Area
3	Administration and Operation Area
4	Press Area
5	Broadcasting Area
6	Mixed Zone
7	VIP Area
-	No Access

► Seat Code

The seat codes on the accreditation card indicate the seats for the competition venue.

Table 2-4: Seat Codes

Code	Meaning
R	Reserved Seats
S	Special Seats
T	Ordinary Seats
U	Unreserved Seats
Z	No Seats
E	Journalist Seats
HB	Seats for the Host Broadcasters

2) Other Venues

Other venues include the Athletes' Village (AV), Main Media Center (MMC).

► Athletes' Village


- ① The access right within the Athletes' Village is indicated by the following codes on the accreditation card

Table 2-5: Athletes' Village Codes

Code	Meaning
V	Village All Access
I	International Zone
-	No Access

- ② Access to catering service in the Athletes' Village Restaurant is indicated by the following pictogram

Table 2-6: Athletes' Village Restaurant Code

Code	Meaning
	Access to the Athletes' Village Restaurant

► Main Media Center (MMC)

The access right within the Main Media Center is indicated by the following codes on the accreditation card.

Table 2-7: Main Media Center Codes

Code	Meaning
P	Main Press Center
B	International Broadcasting Center
-	No Access

3) Transport Code

Access to free transportation service is indicated by the following codes on the accreditation card.

Table 2-8: Transport Codes

Code	Meaning
T1	One vehicle for one VIP
T2	One vehicle for two or more VIPs
T3	Shared vehicle available on call or by advance reservation
TA	Shuttle, team bus or delegation cars for athletes and delegation officials
TF	Bus for Technical Officials
TM	Shuttle bus for Media

2.3 Day Pass

Per venue staffs' request, the applications will be processed and reviewed. Upon approval, the visitor and the staff will receive day pass(es) to enter the venues and work areas. AV day passes can only be applied by the Head of Delegation, FISU members and/or OC staffs. MPC day passes can only be applied by OC staff. Upon approval, the day pass(es) will be delivered. The day pass is only valid for the date stated on the front of the accreditation. Pass holder can access to the areas indicated on the pass but should be accompanied by the accredited personnel.

2.3.1 Athletes' Village Day Pass



Figure 2-4: Athletes' Village Day Pass

- 1) Applicant: Only accreditation media are allow to register.
- 2) How and when to apply: The application forms and photocopy of identity should be submitted to media day pass application mailbox (daypass.taipei2017@mail.taipei.gov.tw) by 12:00 p.m. on the previous day of the visit. TUOC will inform the applicants of the application result at 7pm on the previous day of the visit. Forms can be downloaded at Official website > Media > Application download.
- 3) Issuance: Personal ID is required in exchange for the pass, and the pass must be returned before 8:30 p.m.
- 4) Control of use: Media need to arrive 30 minutes before the time the media applies for arrival visit, media area's staff will assist the media to exchange their media pass to one-day pass in order to enter Athletes' Village. Pass holders should be accompanied by the delegation, FISU members or OC staffs at all times. Pass holders should wear the passes visibly all the times. The pass is not transferable. If the pass is lost or stolen, please notify the day pass desk immediately.
- 5) Period of use: From 9 a.m.-8:30 p.m. on the printed date.
- 6) Daily quota of media area: A maximum number of 30 passes can be issued per day.

2.3.2 Main Press Center Day Pass



Figure 2-5: Main Media Center Day Pass

MPC DAY PASS APPLICATION PROCESS

- 1) Only accredited media affiliation is eligible to apply for MPC Day Pass.
- 2) How to apply for the Day Pass:
 - A. Applicant (not intended visitor, the applicant shall be accredited by TUOC) shall file the application by noon the day before intended visit by:
 - a. Completing the application form at Service Desk at MPC, or
 - b. Completing downloaded application form, then e-mail to Day

Pass Application Mailbox: daypass.taipei2017@mail.taipei.gov.tw
c. Forms can be downloaded at Official website > Media > Application download

- B. MPC will inform the review decision to the applicant by 19:00 the same day;
- C. In addition to the application form, clear Xerox copy of valid identification document (such as R.O.C. ID and/or Passport) shall be provided. Local media should also provide proof of employment such as Company ID and/or Affiliation business card.
- D. Forms can be obtained at MPC or online: Official website > Media > Application download

3) Day Pass Pickup

- A. Visitor should arrive at MPC on time and alert Service Desk of his/her arrival by calling the following numbers:
Hotline: 02-2765-1770 / 02-2765-7642
Toll-Free: 0800-050-058
- B. Visitor shall present original copy of identification document submitted for application to MMC staff. The visitor will be guided into MPC after positive verification of identification document;
- C. Visitor shall deposit his/her identification document at AD center in order to receive MPC Day Pass;
- D. Visitor will be allowed to work at MPC after receiving the MPC Day Pass;
- E. Visitor shall return MPC Day Pass to AD Center before departing MMC, his/her deposited identification document will be returned upon departure.

4) Dates & Time

- A. Day Pass will be issued between August 16th and September 1st, 2017
- B. Day Pass will be valid during 09:00 and 23:00 daily.

- 5) The MPC Day Pass shall be worn at all time. TUOC will notify media affiliation shall the visitor fail to return his/her MPC Day Pass upon departure. In the event of failure to return MPC Day Pass, the media affiliation will lose its eligibility to apply for future MPC Day Pass during the tournament. AD Center will also be relieved from the duty of keeping visitor's identification document.

2.4 Loss or Damage of Accreditation Card

2.4.1 Procedure for Re - issuance of Accreditation Cards

- 1) Foreign and domestic Media submit the application for re-issuance at the Registration and Accreditation Card Delivery Area located in the Media Accreditation Center (MAC). After the accreditation staff confirms the information, the accreditation staff will cancel the lost Accreditation Card and issue the new card.
- 2) After the accreditation staff activates the Accreditation Card, the new card will be delivered at the Registration and Accreditation Card Delivery Area.

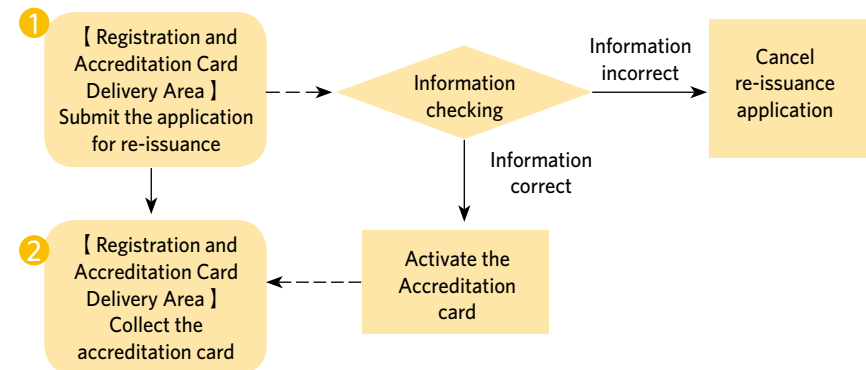


Figure 2-6: Figure of Accreditation Card Re-issuance Procedure at the MAC

2.4.2 Procedure for Replacement of Accreditation Cards

- 1) Media should bring the damaged accreditation card and submit the application for replacement at the Registration and Accreditation Card Delivery Area located in the MAC. After the accreditation staff confirms the information, the accreditation staff will cancel the damaged Accreditation Card and issue the new card.
- 2) After the accreditation staff activates the Accreditation Card, the new card will be delivered at the Registration and Accreditation Card Delivery Area.

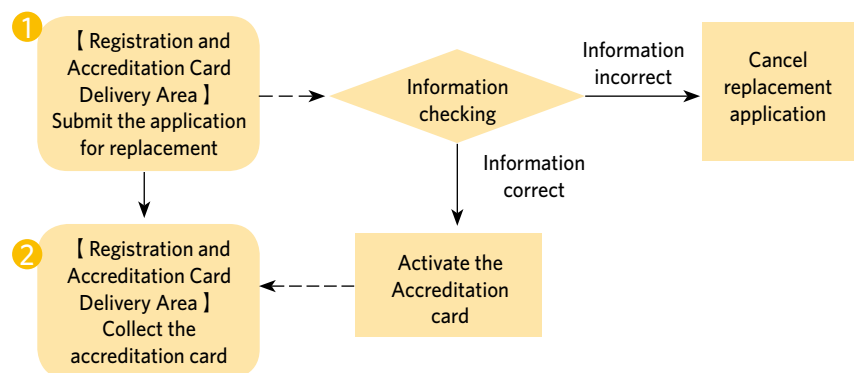


Figure 2-7: Figure of Accreditation Card Replacement Procedure at the MAC

2.5 Media Transportation Services

2.5.1 Media Transportation Services

Service Time: Aug. 16, 2017-Sep. 1, 2017

Shuttle point: Taoyuan International Airport, Taipei Songshan Airport, MPC, Media Hotels, Competition Venues, Athletes' Village

Table 2-9: Media Transportation Services information

Itinerary	Transportation	Method
MPC ↔ Each Venues MPC ↔ Media Hotels	Shuttle bus	Timetable of shuttle will announced at transportation guideline, MPC and Media Hotels.
Opening and Closing Ceremonies	Designated vehicle	Shuttle from MPC to Media Hotels, will arrive before the ceremony.
Other demand	Own expense	Information service desk will provide taxi call service.

2.5.2 Media Arrival and Departure Service

Table 2-10: Media Arrival and Departure Service Information

Itinerary	Service Time	Transportation	Location
Arrive	Aug. 16, 2017- Aug. 29, 2017	Designated vehicle	Pick up at: Airport Destination: MPC
Depart ure	Aug. 20, 2017- Sep. 01, 2017	Designated vehicle	Pick up at: MPC, Media Hotels Destination: Airport

2.5.3 Media Hotels shuttle service

Table 2-11: Media Hotels Shuttle Service Information

Location	Service Time	Transportation	Shuttle information
MPC ↔ Media Hotels	Aug. 16, 2017 - Sep. 01, 2017 24 hours service	Shuttle bus	Day: 8am - 10pm Headway: 30mins Night: 10pm - 8am Headway: 60mins

Table 2-12: Location for Media Designated Hotels

MPC- Designated Hotels	Distance (km)	Journey time (min)
MPC ↔ The Sherwood Taipei	2.8	10
MPC ↔ U Hotel Taipei	3.7	10
MPC ↔ Capital Hotel Nanjing	1.3	5

2.5.4 Media and sport venues shuttle service

Table 2-13: Media and Sport Venues Shuttle Service

Location	Service Time	Transportation	Shuttle information
Sport Venues	Aug. 18, 2017 - Aug. 30, 2017 3 hours before and after the games	All shuttle depart from MPC	14 routes Headway: 30mins

Table 2-14: Transportation Routes for Media

Route no.	MPC	Competition Venues	Sports	Distance (km)	Journey time (min)
301	MPC ↔	Taipei Tianmu Baseball Stadium/University of Taipei (Tianmu Campus) Gymnasium/University of Taipei (Tianmu Campus) Shih-hsin Hall D01/ E02/F01	Baseball, Diving, Basketball	12	40
302	MPC ↔	Taipei Tennis Center/Taipei Nangang Exhibition Center Q01/G01/J01/K01	Tennis, Fencing, Artistic Gymnastics, Rhythmic Gymnastics	5.6-6.4	10-20
303	MPC ↔	Yingfeng Riverside Park Roller Sports Rink/EXPO Dome, Taipei EXPO Park M01/M03/ V01	Roller Sports, Billiard	6-6.4	15-20
304	MPC ↔	Taipei Arena/Taipei Songshan Sports Center Swimming Pool/Taipei Stadium/Taipei Gymnasium E01/S03/B01/C01/C02/C03	Athletics, Water Polo, Basketball, Badminton	2.1	10
305	MPC ↔	National Taiwan Normal University Main Campus Gymnasium/National Taiwan University Sports Center/Taipei Heping Basketball Gymnasium R03/R01/E03/E06	Volleyball, Basketball	6-10	10-20
306	MPC ↔	Tamkang University Shaomo Memorial Gymnasium/Tamkang University Shaomo Memorial Gymnasium T01/T02	Weightlifting	26	60
307	MPC ↔	Chinese Culture University Gymnasium R02	Volleyball	17	45
308	MPC ↔	New Taipei City Breeze Canal N02	Marathon swimming	15	30

Route no.	MPC	Competition Venues	Sports	Distance (km)	Journey time (min)
309	MPC	New Taipei City Xinzhuang Baseball Stadium/New Taipei City Xinzhuang Gymnasium/New Taipei City Xinzhuang Stadium/Fu Jen Catholic University Stadium D02/O01/O02/H03	Baseball, Football, Table Tennis, Water Polo	16-18	25-30
310	MPC	Athlete's Village/Chang Gung University Stadium/National Taiwan Sport University Stadium/National Taiwan Sport University Arena H04/A01/S02/N01	Volleyball, Football, Swimming, Water Polo, Archery	28-35	35-45
311	MPC	Taoyuan Arena/Taoyuan City Athletic Field/Army Academy R.O.C Gymnasium P01/P02/B05/R04	Athletic, Volleyball	45-50	50-60
312	MPC	Sunrise Golf & Country Club I01	Golf	60	65
313	MPC	Hsinchu County Second Stadium/Hsinchu County Natatorium/Hsinchu County Gymnasium H01/S01/U01/L01	Football, Judo, Wushu	80-85	70-80
314	MPC	National Tsinghua University Gymnasium/Hsinchu Municipal Gymnasium R05/E04	Volleyball, Basketball	85-90	80-85
315	MPC	Ren'ai Road, Taipei City (Start :Taipei City Hall Square) B-02	Athletics(Road Race)	2	7
316	MPC	Ren'ai Road, Taipei City (Start: Ketagalan Blvd.) M02	Roller Sports(Road Race)	7	15

Route no.	MPC	Competition Venues	Sports	Distance (km)	Journey time (min)
317		Hsinchu County Gymnasium/Hsinchu County Natatorium/Hsinchu County Second Stadium/Hsinchu Municipal Gymnasium/National Tsinghua University Gymnasium U01/L01/S01/ H01/E04/ /R05	Football, Judo, Wushu, Volleyball, Basketball		
318		National Taiwan Sport University Stadium/National Taiwan Sport University Arena/Chang Gung University Stadium/Taoyuan Arena/Army Academy R.O.C Gymnasium/Sunrise Golf & Country Club A01/N01/S02/H04/P01/R04/I01	Volleyball, Football, Swimming, Water Polo, Archery, Golf		

- ▶ The shuttle between the MPC and Competition Venues will begin operating on August 18
- ▶ The shuttle between the MPC and AV will begin operating on August 16
- ▶ Shuttle service will be provided two hours before the competition begins till four hours after the competition ends
- ▶ Headway will be every 60 minutes from MPC to Competition Venues
- ▶ Headway will be every 120 minutes for Route number 317 and 318.
- ▶ Please refer to 5.2 shuttle timetable

2.6 Media Hotels

The media hotels list:

Table 2-15: List of Media Hotels

Profile	Content
	<p>Capital Hotel-Nanjing Nestled on bustling Nanjing East Road, Hotel Capital Nanjing is just minutes away from Taipei 101, TWTC, the Taipei Gymnasium, Taipei Arena and Songshan Cultural and Creative Park with a high level of public transport accessibility. Tel: 02-2579-6162 Address: No. 156 Sec.4 Nanjing E.Rd. Taipei City, Taiwan R.O.C. Website: www.capital-hotel.com.tw/phone/capitalabout/capital-hotel.html</p>
	<p>U Hotel Taipei Come to experience the most friendly service and get pleasant with the meticulously room design in every room details, "U Hotel is exactly your hotel" which is their service philosophy. Tel: 02-2516-1610 Address: NO.16, sec. 3, Nanjing E. Rd. ,Taipei City, Taiwan R.O.C. Website: www.uhotels.com.tw</p>
	<p>The Sherwood Taipei The Sherwood is located in the Taipei financial center and shopping hub, just a ten-minute drive from Songshan Airport. The hotel is within easy access of the city that will take you to sights all across the island. ▶ Please present badge of Taipei 2017 Universiade upon check-in the hotel. Tel: 02-2718-1188 Address: No. 111, Section 3, Minsheng E.Rd, Taipei City, Taiwan R.O.C. Website: www.sherwood.com.tw</p>

2.7 Travel Information

2.7.1 Fam Tour

TUOC has arranged Fam Tours for special guests and City Tours during the Universiade period that will allow media personnel from around the world to visit Taipei's historic, educational, entertainment and cultural attractions in their spare time and take part in some traditional hand making experience trips.

Fam Tours refers to the tours for special guests. TUOC has created six itineraries for VIPs, media and referees that can join one tour for free with their own accreditation cards. Relatives and friends are allowed to keep company but they will be charged for participation. All the six itineraries are as follows:

Table 2-16: Schedule of Fam Tour

FAM Tours for VIPs, Media and Referees	Tour Dates & Duration	Itineraries
Tea Culture Day Tour	8/15, 8/27 11:00-16:00	Tea Menu for Lunch → The Tea Master Chang Nai-Miao Memorial Hall → Make Your Own Tea and Learn Tea ceremony
Interactive and Relaxing Evening	8/21, 8/27 17:00 - 21:00	Body and foot massage → Taiwanese Hand Puppet Theatre
Top Taipei in One Day	8/16, 8/28 09:00 - 17:00	National Palace Museum → Taipei101 Observatory → Chiang Kai-Shek Memorial Hall → Lungshan Temple and traditional market
Historic Architecture and Culinary Revival Tour	8/17 09:00 - 17:00	Daxi Wood Art Ecomuseum → Xiaolongbao Making and Tasting → Sanxia Old Street
Tranquility and Cultural Tour	8/16 09:00 - 17:00	The One Nanyuan Resort → Seasonal Special Culture Experience → Mangrove Green Tunnel
Vintage Taipei	8/18, 8/25 09:00 - 17:00	Baoan Temple → Din Tai Fung → Make Your Own Drawstring Bag → Xiahai Chenghuang Temple-Tea Time in Dihua street

When time allows, media personnel are also welcome to take part in a City Tour, half- to multi-day tours with additional fees. TUOC has selected 25 itineraries boasting the most famous and interesting attractions in the northern, middle, southern and eastern parts of island.

The Tour Desk will be installed in Main Press Center to provide brochures and accept application. Media personnel can also find more information via the official website (<https://www.travels-en.2017.taipei/>).

	Institutions/Attractions	Notes
14	Taipei Children's Amusement Park	Free admission to the park only. Attraction charges applied.
15	Taipei Arena	Free skating admission only. Equipment charges applied.
16	Taipei Water Park	
17	Xiao Wulai Designated Scenic Area	Free admission to Xiao Wulai Skywalk, Sky Rope Bridge, and Water Area
18	Image Museum of Hsinchu City	

2.7.2 Information of Free admissions with Accreditation Cards

Table 2-17: List of Free admissions with Accreditation Cards

	Institutions/Attractions	Notes
1	National Palace Museum	Free guidance with appointment in advance
2	Taipei Fine Arts Museum	
3	Museum of Contemporary Art, Taipei	10% discount of MOCA's publications
4	Taipei Story House	
5	Puppetry Art Center of Taipei	
6	Zhishan Cultural and Ecological Garden	
7	The Lin Yutang House	
8	Taipei 228 Memorial Museum	
9	Kwoh-ting Li's Residence	
10	Grass Mountain Chateau	
11	Main Building of Chiang Kai-Shek Shilin Residence	
12	Taipei Zoo	
13	Taipei Astronomical Museum (Cosmic Adventure)	

3. MEDIA GUIDELINES

3. Media Guidelines

3.1 Opening and Closing Ceremonies

- 3.1.1 Media will be required to present both media accreditation card and tickets for the access of Opening/Closing Ceremonies. Limited tickets for media are available and TUOC will announce to media for application in advance.
- 3.1.2 Please keep your tickets safely as no replacement of Opening/Closing Ceremonies tickets will be available in the event of loss.
- 3.1.3 The media credential is for credential holder (with the photo of the holder) only and is prohibited from transferring or lending under any circumstance. The TUOC will revoke the credential of the personnel violating the regulations.
- 3.1.4 Media shall follow the safety check procedure and designated traffic to enter the venue. Due to the expected time needed for safety checks, media is advised to leave for the venue earlier. Media are granted access only with designated tickets for Opening/Closing Ceremonies and media accreditation card. Media is advised to enter the venue one hour before the commence of the ceremonies.
- 3.1.5 No more media access will be granted 30 minutes after the commence of the ceremonies. Coordination with the above guidelines will be appreciated.
- 3.1.6 Seating at Opening/Closing Ceremonies are designated and change of seating is not allowed.
- 3.1.7 The rights to live coverage are only granted to Rights-holder and official media. Credentials issued by TUOC must be worn at all time for the access to the venue.
- 3.1.8 The TUOC will provide the footage of VIP speeches as media will not be allowed to record footages

- 3.1.9 The TUOC will provide Shuttle bus service from MPC and media hotels to the venue of Opening/Closing ceremonies.
- 3.1.10 There will be no parking space provide by TUOC during Opening/Closing ceremonies, but there will be a drop-off point at Sec. 3 of Bade Road for media who are going by themselves.

3.2 Common Coverage Guidelines

- 3.2.1 No smoking and No beetle nuts chewing at all venues according to Tobacco Control Act.
- 3.2.2 Media shall bear credentials issued by TUOC for access to all competition venues, main press center and media shuttle.
- 3.2.3 Print Photographers shall wear photo-bib for access of camera seats. For rules governing photographs please refer to photographer's guideline.
- 3.2.4 The media credential and photo-bib issued by TUOC are for the credentialed personnel only and are prohibited from lending and selling to any third party.
- 3.2.5 Please go to MPC for the application of credential replacement in the event of loss (once only).
- 3.2.6 Validated media can board the media shuttle with media credential, however, it is prohibited for media to board on athlete shuttle for coverages.
- 3.2.7 MPC is operated on 24-hour schedule as operation hours of competition venues may vary. Media is allowed access to the competition venues between two hours prior to game time and two hours after the completion of the last competition of the day. Media that needs to work after the closing of the competition venue are advised to work at MPC.

3.2.8 Seating at MPC and competition venue media space are on a first-come, first-served basis. Requests from media affiliation or personnel on designating seating and area will not be honored.

3.2.9 Daily press conferences will be held at MPC with information provided to the media. Official website and MPC will announce the subject(s) of the daily press conference. TUOC will also provide the media with coverage request forms, however TUOC reserves the rights to conduct requested media session.

3.2.10 All venues are equipped with a press conference room, a media working room, a mixed zone, media seats and camera seats. Please refer to floor plans of competition venues as they vary from each other. Media spaces at competition venues are limited and vary by venue, the coordination of the media regulations is appreciated.

3.2.11 Rights holders are granted with priority of the coverage. All coverage shall not be interfering with the progress and order of the competitions

3.2.12 Copying lens from TV for broadcast and news reporting at any venue is prohibited.

3.3 Photography Guidelines

3.3.1 Photographers Bib

- 1) TUOC will distribute NON-POOL bibs to all print media photographers as photographers collect their accreditations. All print media photographers shall wear NON-POOL bibs when entering the photo pit/zone at all venues.
- 2) In order to accommodate the requirement of certain designated venues, print media photographers shall wear POOL (for high-demand-event) bibs when entering the photo pit/zone at the venues. TUOC will announce to activate the high-demand-event POOL bib procedure the day before the event.
- 3) POOL BIB Priority:

1. Official Media

2. International News Agency: AP, Reuters, AFP, Xinhua

3. Hosting National News Agency: CNA

4. Local Big-4: Apple Daily, China Times, Liberty Times, UDN

5. International Media: BBC, CNN, CNS, EPA, Kyodo News, Washington Post, Yomiuri Shimbun, Yonhap News Agency

6. Local Online News: ETNEWS, NOWnews

7. Local Online Sports News Agency: TSNA

- 4) POOL bibs will be distributed at VMC, photographers shall return all POOL bibs upon leaving the venue.



“POOL” bib for the official, main and rights-holder use, allowed for entering award ceremony venue.

“NON POOL” bib for print photographers. The photo zone of award ceremony may open for general photographers based on space and status of each venue. Photos for award ceremony will be provided on the official website.

3.3.2 Media is not allowed to wear signs of obvious advertisement except for tournament logo and official image sponsor.

3.3.3 The official, main and rights-holder still and motion photographers have the priority to use the photo zone at competition venues. The remaining space at the photo zone are open to photographers of print media on a first-come, first-served basis. Shall the photo zone be insufficient for media, photographers will be allowed to work at none-

controlled zone with the respect of attendants' view to the game. No recording competition footage is allowed except for main and rights-holder media.

3.3.4 All competition footages will be provided by main broadcaster. Please contact main broadcaster if necessary. Media is free to record footage of press conference and such non-broadcasting events.

3.3.5 All photo shoots shall not be interfering with the progress of the competition for the athletes. No flash is allowed in all competition venues and tracks. Media working with tri-pods or alike shall setup at the back of photo zone not to interfere with other photo media.

3.3.6 Tournament staff will be stationed at the outside perimeter of the finish zone and to assist to maintain the safety of photographers and athletes. Tournament staff will ask photographers to move to the back of the finish photo zone for safety concerns, if necessary. Approval from finish zone director at the competition venue is required for photographers to cross over the finish line to shoot in the event of incidents occurred on athlete at the finish zone.

3.3.7 Officially authorized media are granted with priority to panning and coverage (competition & mix zone). Non-Rights-holder are prohibited to bring recording equipment (video camera, DC, DV and such) into the competition venues, however they are allowed to bring the above described equipment to MPC.

3.4 VMC Guidelines

3.4.1 Mixed Zone

- 1) The very front of the mixed zone is reserved for official, main and rights-holder media with backdrop installed. The middle section of the mixed-zone is for Non-Rights-holder media.

- 2) Mixed-Zone will be open five minutes following the completion of the competition and will be available for media for five minutes. Media shall not block the athletes after the mixed-zone interview time is over, tournament staff will lead the athletes to leave the mixed-zone.

3.4.2 Media Seats and Media Working Room

- 1) No video recording from media seats and copying lens from TV in working room to broadcast, record the event and to promote affiliated media is allowed.
- 2) Please help to keep the media seats and working room clean and tight.

3.4.3 Award Ceremony

- 1) Media and photographers should only conduct coverage at designated area and shall not be interfering with the broadcasting and photo taking of official, main and Rights-holder. A warning will be issued when a violation of media guidelines is reported or discovered. Shall the warning be disregarded, the TUOC reserves the rights to revoke the credentials and will advise the media to leave the venues.
- 2) Media should be guided by tournament staff to the designated media zone five minutes before the commencing of an award ceremony. No access to the designated media zone will be allowed during the progress of the Award Ceremony.
- 3) Due to the limitation of certain venues, the award ceremony may be open for official photographers only. Please refer to the floor plans of competition venues.

3.4.4 Post-Game Press Conference

- 1) The post-game press conference, if needed, will be conducted fifteen minutes after the completion of the last competition or award ceremony. The press conference will last no longer than one hour
- 2) The doping control process, if needed, will take place following the press conference

4. MAIN PRESS CENTER(MPC)

4. Main Press Center (MPC)

4.1 MPC Overview

Located at the well-known historical landmark Songshan Tobacco Factory (now renamed as Songshan Cultural & Creative Park), the MPC will welcome more than 400 media members worldwide during the tournament period. The MPC will be equipped with a FISU office, an operation office, a media validation center, an information service station, a press working space, a photographer working space, a news room, a photo service station, a media lounge and a young reporter working and lecture room.

To better serve international media members, the 24-hour MPC is also equipped with un-interruptible power system, wired/wireless internet access, and large TV wall that provides competition broadcasts from all venues

- ▶ Location: Warehouse #2 & #3 at Songshan Cultural & Creative Park
- ▶ Address: No. 133, Guang-fu South Road, Xinyi District, Taipei City
- ▶ Floor Area: 2571.3 m²

The Distance between MPC and the main locations

- Songshan International Airport: 3.1km/12minutes (surface road);
- Taoyuan International Airport: 50.4km/41minutes (highway);
- Taipei Main Station: 5.1km/11minutes (express way);
- Opening/Closing Ceremony Venue: 2.6km/10minutes (surface road);
- IBC: 650m / 8minutes (by foot);
- MRT Sun Yat-Sen Memorial Hall Station: 300m/2minutes (by foot);



Figure 4-1:
MPC Vicinity Map

4.2 MPC Operation Hours

Dates	Hours	Notes
Aug. 16, 2017 - Sep. 01, 2017	24 hours	First day opening at 08:00 Last day closing at 22:00
Sep. 02, 2017	N/A	CLOSED

4.3 MPC Contacts

Email: media2017@mail.taipei.gov.tw

Media Service Line: 0800-050-058

4.4 MPC Floor Plans

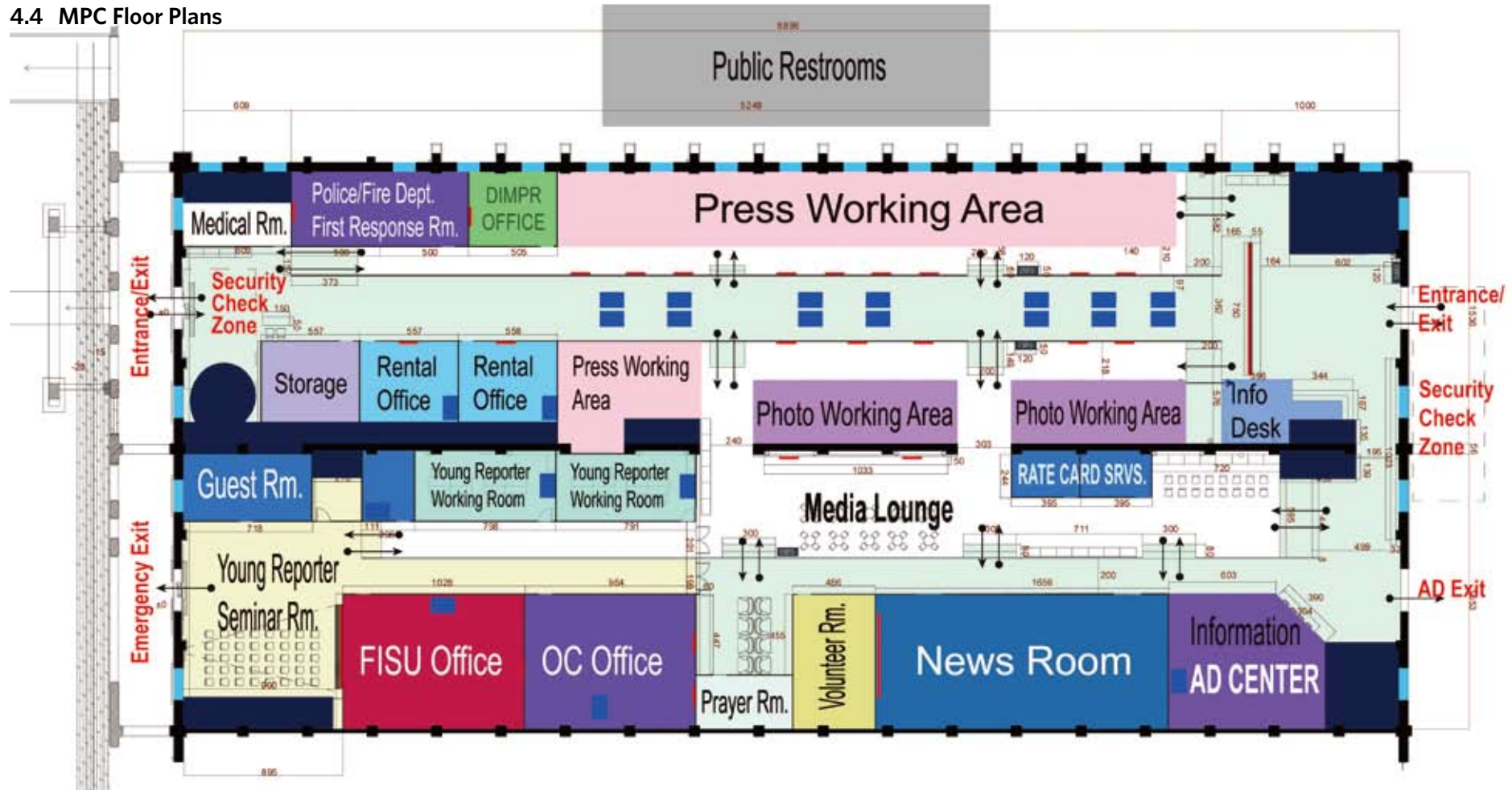


Figure 4-2: MPC Floor Plan

5. VENUE MEDIA CENTERS (VMC)

5. Venue Media Centers (VMC)

5.1 Venue Media Centers Overview

Table 5-1: VMC Details

A-01	
Venue National Taiwan Sport University Stadium	
Sports Archery	
Venue Location	
Add: No. 250, Wenhua 1st Rd., Guishan Dist., Taoyuan City	
Media Facilities	
Persons allowed in Media Room	50
Persons allowed in Press Room	50
Media Seats	50
Media Tables	50
Photo Seats	30
Competition Dates	Aug. 20-24, 2017
Operation Hours	06:00-19:40

B-01	
Venue Taipei Stadium	
Sports Athletics	
Venue Location	
Add: No. 3, Dunhua N. Rd., Songshan Dist., Taipei City	
Media Facilities	
Persons allowed in Media Room	100
Persons allowed in Press Room	100
Media Seats	250
Media Tables	250
Photo Seats	TBD
Competition Dates	Aug. 23-28, 2017
Operation Hours	06:00-23:50

B-02	
Venue Ren'ai Rd., Taipei City (Start :Taipei City Hall Square)	
Sports Athletics	
Venue Location	
Add: No.1, City Hall Rd., Xinyi District.,Taipei City	
Media Facilities	
Persons allowed in Media Room	50
Persons allowed in Press Room	50
Media Seats	0
Media Tables	0
Photo Seats	30
Competition Dates	Aug. 26-27, 2017
Operation Hours	05:00-11:00

C-01	
Venue Taipei Gymnasium	
Sports Badminton	
Venue Location	
Add: No. 10, Nanjing E. Rd., Sect. 4, Songshan Dist., Taipei City	
Media Facilities	
Persons allowed in Media Room	50
Persons allowed in Press Room	50
Media Seats	100
Media Tables	100
Photo Seats	TBD
Competition Dates	Aug. 23-29, 2017
Operation Hours	06:00-00:00

D-01	
Venue Taipei Tianmu Baseball Stadium	
Sports Baseball	
Venue Location	
Add: No. 77, Zhongcheng Rd., Sec. 2, Shilin Dist., Taipei City	
Media Facilities	
Persons allowed in Media Room	100
Persons allowed in Press Room	100
Media Seats	120
Media Tables	120
Photo Seats	15
Competition Dates	Aug. 20-29, 2017
Operation Hours	06:30-23:00

D-02	
Venue New Taipei City Xinzhuang Baseball Stadium	
Sports Baseball	
Venue Location	
Add: No. 66, Hexing St., Xinzhuang Dist., New Taipei City	
Media Facilities	
Persons allowed in Media Room	50
Persons allowed in Press Room	80
Media Seats	100
Media Tables	100
Photo Seats	15
Competition Dates	Aug. 20-29, 2017
Operation Hours	06:30-23:00

E-01	
Venue Taipei Arena	
Sports Basketball	
Venue Location	
Add: No. 2, Nanjing E. Rd., Sec. 4, Songshan Dist., Taipei City	
Media Facilities	
Persons allowed in Media Room	80
Persons allowed in Press Room	60
Media Seats	162
Media Tables	162
Photo Seats	40
Competition Dates	Aug. 20-29, 2017
Operation Hours	06:30-23:00

E-02	
Venue University of Taipei (Tianmu) Gymnasium	
Sports Basketball	
Venue Location	
Add: No. 101, Zhongcheng Rd., Sec. 2, Shilin Dist., Taipei City	
Media Facilities	
Persons allowed in Media Room	30/28
Persons allowed in Press Room	30/28
Media Seats	28
Media Tables	15
Photo Seats	40
Competition Dates	Aug. 20-29, 2017
Operation Hours	06:30-23:00

E-03

Venue Taipei Heping Basketball Gymnasium

Sports Basketball

Venue Location

Add: No.28, Ln. 76, Dunnan St., Da'an District., Taipei City

Media Facilities

Persons allowed in Media Room	50
Persons allowed in Press Room	50
Media Seats	33
Media Tables	33
Photo Seats	40
Competition Dates	Aug. 20-29, 2017
Operation Hours	06:30-23:00

E-04

Venue Hsinchu Municipal Gymnasium

Sports Basketball

Venue Location

Add: No. 295, Gongyuan Rd., East Dist., Hsinchu City

Media Facilities

Persons allowed in Media Room	50
Persons allowed in Press Room	50
Media Seats	27
Media Tables	27
Photo Seats	40
Competition Dates	Aug. 20-29, 2017
Operation Hours	06:30-23:00

F-01

Venue University of Taipei (Tianmu) Shih-hsin Hall, B1 Diving Pool

Sports Diving

Venue Location

Add: No. 101, Zhongcheng Rd., Sec. 2, Shilin Dist., Taipei City

Media Facilities

Persons allowed in Media Room	50
Persons allowed in Press Room	50
Media Seats	45
Media Tables	45
Photo Seats	TBD
Competition Dates	Aug. 20-27, 2017
Operation Hours	07:30-19:00

G-01

Venue Taipei Nangang Exhibition Center Hall 1 (1F)

Sports Fencing

Venue Location

Add: No. 1, Jingmao 2nd Rd., Nagang Dist., Taipei City

Media Facilities

Persons allowed in Media Room	50
Persons allowed in Press Room	50
Media Seats	50
Media Tables	50
Photo Seats	TBD
Competition Dates	Aug. 20-25, 2017
Operation Hours	05:30-22:00

H-01
Venue Hsinchu County Second Stadium
Sports Football

Venue Location
 Add: Dong Sec. 1, Guangming 6th Rd., Zhubei City, Hsinchu County

Media Facilities	
Persons allowed in Media Room	50
Persons allowed in Press Room	50
Media Seats	50
Media Tables	50
Photo Seats	40
Competition Dates	Aug. 18-29, 2017
Operation Hours	07:30-23:00

H-02
Venue New Taipei City Xinzhuang Stadium
Sports Football

Venue Location
 Add: No. 66, Hexing St., Xinzhuang Dist., New Taipei City

Media Facilities	
Persons allowed in Media Room	50
Persons allowed in Press Room	50
Media Seats	55
Media Tables	50
Photo Seats	40
Competition Dates	Aug. 18-29, 2017
Operation Hours	07:30-23:00

H-03
Venue Fu Jen Catholic University Stadium
Sports Football

Venue Location
 Add: No. 510, Zhongzheng Rd., Xinzhuang Dist., New Taipei City

Media Facilities	
Persons allowed in Media Room	140
Persons allowed in Press Room	140
Media Seats	140
Media Tables	140
Photo Seats	40
Competition Dates	Aug. 18-29, 2017
Operation Hours	07:30-23:00

H-04
Venue Chang Gung University Stadium
Sports Football

Venue Location
 Add: No. 259, Wenhua 1st Rd., Guishan Dist., Taoyuan City

Media Facilities	
Persons allowed in Media Room	50
Persons allowed in Press Room	50
Media Seats	50
Media Tables	50
Photo Seats	40
Competition Dates	Aug. 18-29, 2017
Operation Hours	07:30-23:00

I-01	
Venue Sunrise Golf & Country Club	
Sports Golf	
Venue Location	
Add: No. 256, Yangsheng Rd., Yangmei Dist., Taoyuan City	
Media Facilities	
Persons allowed in Media Room	50
Persons allowed in Press Room	50
Media Seats	N/A due to the nature of the sports
Media Tables	
Photo Seats	No Fixed Seats
Competition Dates	Aug. 24-27, 2017
Operation Hours	05:00-20:00

J-01	
Venue Taipei Nangang Exhibition Center Hall 1 (4F)	
Sports Rhythmic Gymnastics	
Venue Location	
Add: No. 1, Jingmao 2nd Rd., Nagang Dist., Taipei City	
Media Facilities	
Persons allowed in Media Room	50
Persons allowed in Press Room	50
Media Seats	50
Media Tables	50
Photo Seats	20
Competition Dates	Aug. 27-29, 2017
Operation Hours	06:30-23:00

K-01	
Venue Taipei Nangang Exhibition Center Hall 1 (4F)	
Sports Artistic Gymnastics	
Venue Location	
Add: No. 1, Jingmao 2nd Rd., Nagang Dist., Taipei City	
Media Facilities	
Persons allowed in Media Room	50
Persons allowed in Press Room	50
Media Seats	50
Media Tables	50
Photo Seats	20
Competition Dates	Aug. 19-23, 2017
Operation Hours	06:30-23:00

L-01	
Venue Hsinchu County Gymnasium	
Sports Judo	
Venue Location	
Add: No. 2, Dong Sec. 1, Guangming 6th Rd., Zhubei City, Hsinchu County	
Media Facilities	
Persons allowed in Media Room	100
Persons allowed in Press Room	100
Media Seats	100
Media Tables	100
Photo Seats	TBD
Competition Dates	Aug. 20-24, 2017
Operation Hours	07:00-23:30

M-01
Venue Yingfeng Riverside Park Roller Sports Rink
Sports Roller Sports

Venue Location
 Add: No. 7, Binjiang St., Songshan Dist., Taipei City

Media Facilities	
Persons allowed in Media Room	35
Persons allowed in Press Room	35
Media Seats	40
Media Tables	40
Photo Seats	30
Competition Dates	Aug. 21-26, 2017
Operation Hours	06:30-19:30

M-02
Venue Ren'ai Rd., Taipei City (Ketagalan Blvd.)
Sports Roller Sports

Venue Location
 Add: Ren'ai Rd., Taipei City (Ketagalan Blvd.)

Media Facilities	
Persons allowed in Media Room	50
Persons allowed in Press Room	50
Media Seats	N/A due to the nature of the sports
Media Tables	
Photo Seats	30 at Finish Line
Competition Dates	Aug. 26, 2017
Operation Hours	05:00-14:30

N-01
Venue National Taiwan Sport University Arena
Sports Swimming

Venue Location
 Add: No. 250, Wenhua 1st Rd., Guishan Dist., Taoyuan City

Media Facilities	
Persons allowed in Media Room	100
Persons allowed in Press Room	100
Media Seats	100
Media Tables	100
Photo Seats	TBD
Competition Dates	Aug. 20-27, 2017
Operation Hours	06:00-22:20

N-02
Venue New Taipei City Breeze Canal
Sports Swimming

Venue Location
 Add: No.1, Shuhong Rd., Wugu Dist., New Taipei City

Media Facilities	
Persons allowed in Media Room	35
Persons allowed in Press Room	35
Media Seats	N/A due to the nature of the sports
Media Tables	
Photo Seats	No Fixed Seats
Competition Dates	Aug. 20-27, 2017
Operation Hours	

O-01

Venue New Taipei City Xinzhuang Gymnasium

Sports Table Tennis

Venue Location

Add: No. 66, Hexing St., Xinzhuang Dist., New Taipei City

Media Facilities

Persons allowed in Media Room	50
Persons allowed in Press Room	50
Media Seats	50
Media Tables	50
Photo Seats	TBD
Competition Dates	Aug. 22-29, 2017
Operation Hours	07:00-23:00

P-01

Venue Taoyuan Arena

Sports Taekwondo

Venue Location

Add: No. 1, Sec. 1, Sanmin Rd., Taoyuan Dist., Taoyuan City

Media Facilities

Persons allowed in Media Room	100
Persons allowed in Press Room	100
Media Seats	120
Media Tables	120
Photo Seats	
Competition Dates	Aug. 20-26, 2017
Operation Hours	06:00-23:30

Q-01

Venue Taipei Tennis Center

Sports Tennis

Venue Location

Add: No. 208, Sec. 6, Minquan E. Rd., Neihu Dist., Taipei City

Media Facilities

Persons allowed in Media Room	100
Persons allowed in Press Room	100
Media Seats	50
Media Tables	50
Photo Seats	TBD
Competition Dates	Aug. 21-29, 2017
Operation Hours	06:30-22:00

R-01

Venue National Taiwan University Sports Center

Sports Volleyball

Venue Location

Add: No. 1, Sec. 4, Roosevelt Rd., Daan Dist., Taipei City

Media Facilities

Persons allowed in Media Room	100
Persons allowed in Press Room	100
Media Seats	90
Media Tables	90
Photo Seats	TBD
Competition Dates	Aug. 20-29, 2017
Operation Hours	08:00-21:30

R-02
Venue Chinese Culture University Gymnasium
Sports Volleyball

Venue Location
 Add: No. 55, Huagang Rd., Shilin Dist., Taipei City

Media Facilities	
Persons allowed in Media Room	50
Persons allowed in Press Room	50
Media Seats	30
Media Tables	30
Photo Seats	TBD
Competition Dates	Aug. 20-29, 2017
Operation Hours	08:00-19:30

R-03
Venue National Taiwan Normal University Main Campus Gymnasium
Sports Volleyball

Venue Location
 Add: No. 162, Sec. 1, Heping E. Rd., Daan Dist., Taipei City

Media Facilities	
Persons allowed in Media Room	50
Persons allowed in Press Room	50
Media Seats	30
Media Tables	30
Photo Seats	TBD
Competition Dates	Aug. 20-29, 2017
Operation Hours	08:00-19:30

R-04
Venue Army Academy R.O.C Gymnasium
Sports Volleyball

Venue Location
 Add: No. 750, Longdong Rd., Zhongli Dist., Taoyuan City

Media Facilities	
Persons allowed in Media Room	50
Persons allowed in Press Room	50
Media Seats	30
Media Tables	30
Photo Seats	TBD
Competition Dates	Aug. 20-29, 2017
Operation Hours	08:00-19:30

R-05
Venue National Tsing Hua University Gymnasium
Sports Volleyball

Venue Location
 Add: No. 101, Sec. 2, Guangfu Rd., East Dist., Hsinchu City

Media Facilities	
Persons allowed in Media Room	50
Persons allowed in Press Room	50
Media Seats	15
Media Tables	15
Photo Seats	TBD
Competition Dates	Aug. 20-29, 2017
Operation Hours	08:00-19:30

S-01	
Venue Hsinchu County Natatorium	
Sports Water Polo	
Venue Location	
Add: No. 199, Sec. 1, Fuxing E. Rd., Zhubei City, Hsinchu County	
Media Facilities	
Persons allowed in Media Room	50
Persons allowed in Press Room	50
Media Seats	50
Media Tables	50
Photo Seats	20
Competition Dates	Aug. 18-30, 2017
Operation Hours	07:00-23:00

S-02	
Venue National Taiwan Sport University Arena	
Sports Water Polo	
Venue Location	
Add: No. 250, Wenhua 1st Rd., Guishan Dist., Taoyuan City	
Media Facilities	
Persons allowed in Media Room	50
Persons allowed in Press Room	50
Media Seats	48
Media Tables	48
Photo Seats	20
Competition Dates	Aug. 18-30, 2017
Operation Hours	07:00-23:00

S-03	
Venue Taipei Songshan Sports Center Swimming Pool	
Sports Water Polo	
Venue Location	
Add: No. 1, Dunhua N. Rd., Songshan Dist., Taipei City	
Media Facilities	
Persons allowed in Media Room	50
Persons allowed in Press Room	50
Media Seats	48
Media Tables	48
Photo Seats	20
Competition Dates	Aug. 18-30, 2017
Operation Hours	08:00-22:00

T-01	
Venue Tamkang University Shaomo Memorial Gymnasium (7F)	
Sports Weightlifting	
Venue Location	
Add: No. 151, Yingzhuan Rd., Tamsui Dist., New Taipei City	
Media Facilities	
Persons allowed in Media Room	50
Persons allowed in Press Room	50
Media Seats	100
Media Tables	20
Photo Seats	TBD
Competition Dates	Aug. 20-25, 2017
Operation Hours	06:20-22:30

U-01

Venue Hsinchu County Gymnasium

Sports Wushu

Venue Location

Add: No. 2, Dong Sec. 1, Guangming 6th Rd., Zhubei City, Hsinchu County

Media Facilities	
Persons allowed in Media Room	100
Persons allowed in Press Room	100
Media Seats	100
Media Tables	100
Photo Seats	TBD
Competition Dates	Aug. 26-29, 2017
Operation Hours	09:00-21:00

V-01

Venue EXPO Dome at Taipei EXPO Park

Sports Billiards

Venue Location

Add: No. 1, Yumen St., Zongshan Dist., Taipei City

Media Facilities	
Persons allowed in Media Room	50
Persons allowed in Press Room	50
Media Seats	50
Media Tables	50
Photo Seats	No Fixed Seats
Competition Dates	Aug. 25-29, 2017
Operation Hours	07:00-20:00



6. GAME SCHEDULE

6. Game Schedule

Table 6-1: Game Schedule

Aug. 19-30, 2017

		Fri.	Sat.	Sun.	Mon.	Tue.	Wed.
		18 Aug.	19 Aug.	20 Aug.	21 Aug.	22 Aug.	23 Aug.
		Day0	Day1	Day2	Day3	Day4	Day5
Opening Ceremony			★				
1	Archery						5
2	Athletics						2
3	Badminton						
4	Baseball						
5	Basketball						
6	Diving			2	2	1	1
7	Fencing			2	2	2	2
8	Football						
9	Golf						
10	Artistic Gymnastics			1	1	2	10
11	Rhythmic Gymnastics						
12	Judo			4	4	4	4
13	Roller Sports				4	4	4
14	Swimming			4	5	5	7
15	Table Tennis						
16	Taekwondo			2	3	4	4
17	Tennis						
18	Volleyball						
19	Water Polo						
20	Weightlifting			3	3	2	2
21	Wushu						
Closing Ceremony							
Total				18	24	24	41
Demonstration							
Billiards							
Total							

Thu.	Fri.	Sat.	Sun.	Mon.	Tue.	Wed.	Competition Days	Competition Date
24 Aug.	25 Aug.	26 Aug.	27 Aug.	28 Aug.	29 Aug.	30 Aug.		
Day6	Day7	Day8	Day9	Day10	Day11	Day12		
5							5	Aug. 20-24
6	9	12	11	10			6	Aug. 23-28
	1				5		6	Aug. 23-29
					1		8	Aug. 20-29
				1	1		10	Aug. 20-29
3	1	1	4				8	Aug. 20-27
2	2						6	Aug. 20-25
				1	1		12	Aug. 18-29
			4				4	Aug. 24-27
							5	Aug. 19-23
				2	6		3	Aug. 27-29
2							5	Aug. 20-24
	2	2					5	Aug. 21-26
4	7	8	2				8	Aug. 20-27
		2	1	2	2		8	Aug. 22-29
4	4	2					7	Aug. 20-26
				2	5		9	Aug. 21-29
				1	1		10	Aug. 20-29
					1	1	13	Aug. 18-30
3	3						6	Aug. 20-25
			2	2	10		4	Aug. 26-29
						★		
29	29	27	24	21	33	1	271	
			2		2		5	Aug. 25-29
					4		4	

7. RELATED INFORMATION

7. Related Information

7.1 Lifestyle

7.1.1 Climate

Taiwan enjoys warm weather all year round. Weather conditions fluctuate during spring and winter, while in summer and autumn the weather is relatively stable. Taiwan is extremely suitable for traveling, as the annual average temperature is a comfortable 22 degrees Celsius with the lowest temperatures on the lowlands generally ranging from 12 to 17 degrees Celsius (54-63 Fahrenheit).

We suggest to keep an eye on weather reports, because weather conditions are often severe and unpredictable when typhoons hit the island.

7.1.2 Power Supplies

We uses electric current of 110 volts at 60 cycles, appliances from Europe, Australia or South-East Asia will need an adaptor or transformer. Many buildings have sockets with 220 volts especially for the use of air conditioners.

7.1.3 Currency

Our unit of currency is the New Taiwan Dollar (NT\$), which has five denominations in banknote and five in coins.

Bills come in NT\$2,000, NT\$1,000, NT\$500, NT\$200, and NT\$100 denominations.

Coins come in NT\$50, NT\$20, NT\$10, NT\$5 and NT\$1 denominations.


Foreign currencies can be exchanged at government-designated banks and hotels. Receipts are given when currency is exchanged, and must be presented in order to exchange unused NT dollars before departure.

Major credit cards such as American Express, Master Card, Visa, JCB and Diners Club are accepted and traveler's checks may be cashed at foreign-exchange banks, some tourist-oriented businesses, and (by

room guests) most international tourist hotels.

For further information about New Taiwan Dollar notes, please visit the Central Bank of the Republic of China (Taiwan) website.

Table 7-1: Local Currency Value

CURRENCY	SAMPLE
NT\$2,000	
NT\$1,000	
NT\$500	
NT\$200	
NT\$100	

7.1.4 Business Hours

Table 7-2: Operation Hours for General Business

Government	Weekdays 8:30-12:30 / 13:30-17:30
Business	Weekdays 09:00-18:00
Department Stores	Open almost daily 11:00-21:30
Shops	Open almost every day except for the Chinese New Year 10:00/11:00-21:00/22:00
Convenience Stores	Open daily 24 hours a day (some stores open at 07:00-23:00)
Restaurants	Most open daily Lunch 11:00-14:00 Dinner 17:00-22:00 (afternoon tea at 14:00-17:00)

7.1.5 Tax & Service Charges

Sales taxes are included in the price. Service charge of 10% is customary in hotels and restaurants. A unified invoice will be given to the customers for the proof of purchase.

Foreigners who worked here are required to file an income tax return in May each year. The deadline is May 31. For guidelines on how to file taxes as a foreigner, please contact:

National Taxation Bureau of Taipei

<https://www.ntbt.gov.tw/etwmain?site=en>

National Taxation Bureau of Kaohsiung

<https://www.ntbk.gov.tw/etwmain?site=en>

7.1.6 Travelers' Check

Most local stores do NOT accept Traveler's Check, travelers with Traveler's Check are encouraged to exchange for NT dollars beforehand.

7.1.7 VAT Refund Guidelines for Foreign Travelers

1) Eligible Applicants:

Foreign travelers who enter the R.O.C. with the following documents and stay for no more than 183 days from the date of arrival:

- ① Passport of a country other than the R.O.C.
- ② R.O.C. passport without personal ID number recorded
- ③ Travel documents
- ④ Exit & Entry permit
- ⑤ Temporary entry permit (Note: only eligible for use in claims made at an international airport or port, not applicable for on-site or designated tax refund service outside of airports or ports)

2) Requirements for VAT Refund:

Foreign travelers, with the entry document, who make purchases of at least NT\$2,000 on the same day from the same designated stores with the "Taiwan Tax Refund"-label are eligible to request the "Application Form for VAT Refund." To claim the refund, they must apply at the port of their departure from the R.O.C. within 90 days following the date of purchase, and they must take the purchased goods out of the country with them.

3) Where to Claim Your Refund:

- ① The Tax Refund Service at Airports/port terminals: Tax Refund Service Counters located at the airport/seaport.
- ② On-site Small-amount Tax Refunds: Authorized "Taiwan Tax Refund"-labeled stores.

③ Designated Counter for Tax Refund Service: Designated Counters for Tax Refund Service.

④ For more detailed information and locations of tax-refund points please visit Foreign Travelers Tax Return Website at <https://www.taxrefund.net.tw/ttr/>.

4) Procedures of Claiming Tax Refunds

① Before your luggage check-in, please take your passport and Tax Refund Claim Form to the E-VAT Refund machine or Tax Refund Service Counter, to prove your foreign identity and check the Tax refundable receipts. The Tax refund system will instruct you if the goods need to be examined by the Customs or not.

② If your goods need to go through the Customs, the machine will print out a checklist. Please visit the customs counter with the following documents and the checklist:

- ▶ The checklist (printed by the E-VAT Refund machine);
- ▶ Tax Refund Claim Form;
- ▶ Personal documents (passport, travel documents, entry/exit permits or temporary entry permit;
- ▶ The uniform invoices noted with "tax-refundable goods" or "the last four digits of your passport number.";
- ▶ The goods you purchased.

③ Please obtain the receipt "Tax Refund Assessment Certificate for Eligible Goods Purchased by Foreign Travelers" printed out by the machine or given by the Service Counter and go to the designated banks or cash counters located at departure airports/seaports for your tax refund.

7.2 Health & Medical Information

Taipei City Hospital is a full-service, total care medical institution that is prepared to meet the comprehensive healthcare needs of Taipei's 2.6 million residents. The merger of ten municipal hospitals into one unit has made the Taipei City Hospital the largest healthcare organization in Northern Taiwan.

Table 7-3: Taipei City Hospital Information

Branch	Address	Service Number
Zhongxing Branch	No.145, Zhengzhou Rd., Datong Dist., Taipei City 103, Taiwan (R.O.C.)	(02)2552-3234
Ren'ai Branch	No.10, Sec. 4, Ren'ai Rd., Da'an Dist., Taipei City 106, Taiwan (R.O.C.)	(02)2709-3600
Heping Fuyou Branch	Heping- No.33, Sec. 2, Zhonghua Rd., Zhongzheng Dist., Taipei City 100, Taiwan (R.O.C.) Children's & Women's - No.12, Fuzhou St., Zhongzheng Dist., Taipei City 100, Taiwan (R.O.C.)	(02)2388-9595(Heping) (02)2391-6471 (Children's & Women's)
Zhongxiao Branch	No.87, Tongde Rd., Nangang Dist., Taipei City 115, Taiwan (R.O.C.)	(02)2786-1288
Yangming Branch	No.105, Yusheng St., Shilin Dist., Taipei City 111, Taiwan (R.O.C.)	(02)2835-3456
Songde Branch	No.309, Songde Rd., Xinyi Dist., Taipei City 110, Taiwan (R.O.C.)	(02)2726-3141
Chinese Medicine Clinic Center	No.100, Kunming St., Wanhua Dist., Taipei City 108, Taiwan (R.O.C.)	(02)2388-7088
Linsen Chinese Medicine Branch	No.530, Linsen N. Rd., Zhongshan Dist., Taipei City 104, Taiwan (R.O.C.)	(02)2591-6681

MPC is equipped with medical center which provides emergency and transfer to medical facilities for further and advanced treatment if necessary.

7.3 Transportation Information

7.3.1 Taipei Metro

"A world-class metro, a wonderful Taipei"

With a service philosophy of openness and innovation, the Taipei Metro supports the City's all-round development for better living, working, recreation and transportation. We integrate the local spirit to forge a brighter urban culture.



Figure 7-1: Taipei Metro Route Map

1) Taking the MRT:

Once you have your token, insert token into the slot on the ticket reader. You can enter or exit the station after the beep.

Tickets - One-way ticket (IC token, ticket card)



- ▶ Suitable for one-time trip
- ▶ Ticket vending machine sell tickets in every MRT station
- ▶ Effective only on the day of purchase

2) Taipei Pass



Category	Price
One-day Pass	NT\$ 180
One-day Pass (gondola)	NT\$ 350
Two-day Pass	NT\$ 310
Three-day Pass	NT\$ 440
Five-day Pass	NT\$ 700

- ▶ Suitable for short-term travelers.
- ▶ Unlimited rides with MRT, city and prefectural buses. 1-day pass (Gondola version) with unlimited rides on Taipei Metro and associated bus services. Allows 3 trips on Maokong Gondola.
- ▶ Available at the customer service counter in every MRT station.
- ▶ Expires on the date of the number of days printed on the pass after the date of first-use.

3) One-Day Pass 24hr Pass 48hr Pass 72hr Pass



NT\$150



NT\$180



NT\$280



NT\$380

4) Easy Card

For first-time buyers NT\$500, including NT\$400 bus credit. Amount corresponding to the ticket price for a given distance is deducted from the Easy Card for every MRT ride.

- ▶ Suitable for tourists planning to use the MRT to get around Taipei
- ▶ Accepted by MRT, city and prefectural buses
- ▶ Available at the customer service counter in every MRT station
- ▶ One pass is for one passenger only



7.3.2 Taipei City Sightseeing Bus

The sightseeing bus offers two different routes, the blue route and the red route, both departing from Taipei Main Station, with 20 stops in total. The bus stops at landmarks and attractions including Taipei 101, National Palace Museum, Sun Yat-sen Memorial Hall, Liberty Square, Ximending and Yongkang street.

Free services onboard include in-app video/audio guide, wi-fi, usb charging and more. Hop on and off at any stop of your choice to organizer your sightseeing day the way you like.

Table 7-4 Taipei City Sightseeing Bus Information

Ticket Type	Price	Note
Four Hour Pass	NT\$300	Tickets are valid within 4 hours, unlimited rides (before 18:00)
Day Tour Pass	NT\$500	Red route: 09:10-18:00 blue route: 09:10-17:00 (Unlimited rides with the day of activation)
Night Tour Pass	NT\$400	Red route(use time): 09:10-18:00 (Unlimited rides with the day of activation)
One-day Pass	NT\$700	Unlimited rides, valid during operation hours
Two-day pass	NT\$1,200	Unlimited rides, on two consecutive days, valid during operation hours

Contact No: (02)8791-6557#6006 (Service Hours: 8:30-22:30)

Official Website: <http://www.taipeisightseeing.com.tw>

▶ For detailed departure times, ticketing and other information, please check the official website.



