

C  
Sp 33 H  
1914-15

UNIVERSITY OF ALABAMA  
201 APR 1915

THE LIBRARY  
OF THE  
UNIVERSITY OF ALABAMA

1914-1915

# Spelman Seminary

Atlanta, Georgia





# Spelman Seminary

Atlanta, Georgia





THIRTY-FOURTH  
ANNUAL CIRCULAR  
OF  
SPELMAN SEMINARY  
FOR WOMEN AND GIRLS  
IN ATLANTA, GA.

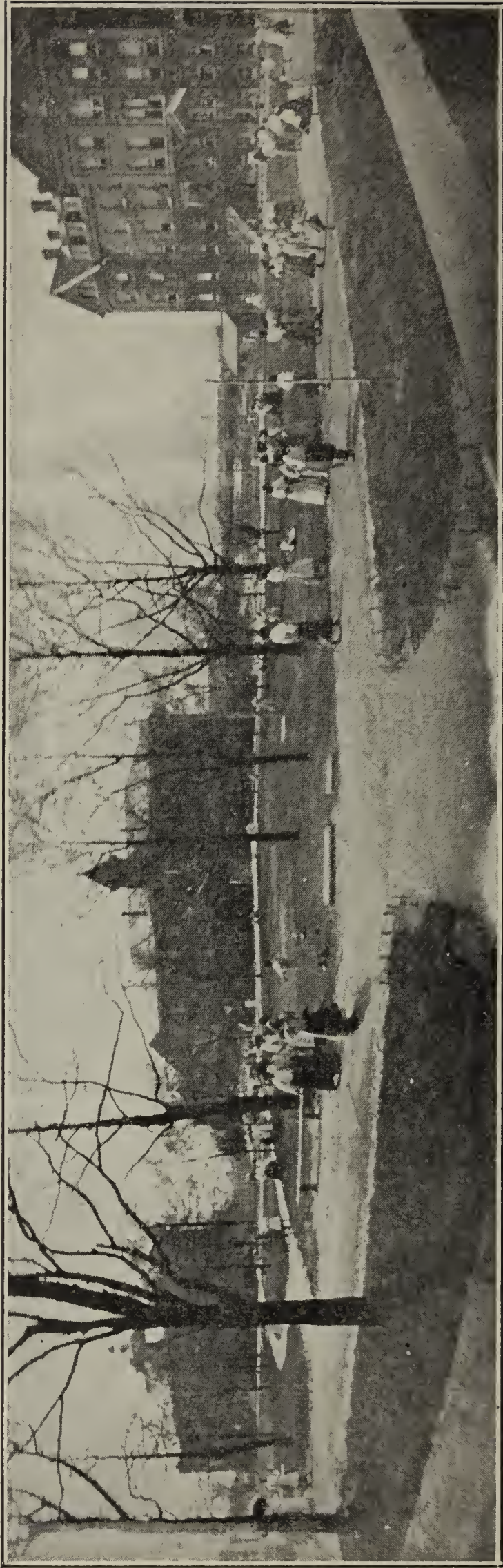


FOR THE ACADEMIC YEAR 1914-1915

---

ATLANTA, GA.  
SPELMAN MESSENGER OFFICE  
1915





706 students registered in 1913-14.

SPELMAN SEMINARY, Atlanta, Ga.





## CALENDAR.

School year begins, . . . . .	October 5, 1915
First Pay-day, . . . . .	" " "
Second " " . . . . .	November 8, "
Third " " . . . . .	December 6, "
Fourth " " . . . . .	January 3, 1916
Fifth " " . . . . .	January 31, "
Sixth " " . . . . .	February 28, "
Seventh " " . . . . .	March 27, "
Eighth " " . . . . .	April 24, "
Founders' Day, . . . . .	April 11, "
Annual Sermon before the Societies, . . . . .	May 14, "
Commencement Sermon, . . . . .	" 21, "
Class Day, . . . . .	" 22, "
Alumnæ Meeting, . . . . .	" 23, "
Commencement, . . . . .	" 24, "

---

## INDEX.

Admission . . . . .	15
Agriculture . . . . .	30
Cooking . . . . .	30
Courses of Study . . . . .	26
Departments of Instruction . . . . .	17
Dressmaking . . . . .	23, 30
Expenses . . . . .	15
Faculty . . . . .	7, 12
General Information . . . . .	11
Graduates . . . . .	49
Millinery . . . . .	24, 30
Music . . . . .	23, 29
Nurse Training . . . . .	22
Printing . . . . .	31
Requirements . . . . .	14
Special Announcements . . . . .	25
Teachers Professional Department . . . . .	21, 29
Trustees . . . . .	6

---

## FORM OF BEQUEST.

I give and bequeath to The Spelman Seminary, incorporated in Atlanta Ga., in 1888, the sum of . . . . . dollars

# TRUSTEES.

---

*PRESIDENT,*

REV. HENRY L. MOREHOUSE, D. D.

*VICE PRESIDENT,*

REV. CHARLES L. WHITE, D. D.

*SECRETARY,*

REV. EDWIN P. JOHNSON, D. D.

*TREASURER,*

MISS ANGIE E. KENDALL.

EX-OFFICIO.

MRS. KATHERINE S. WESTFALL, Cor. Sec. W. A. B. H. M. Soc'y.

REV. HENRY L. MOREHOUSE, D. D., Cor. Sec. A. B. H. M. Society.

MISS LUCY HALE TAPLEY, President Spelman Seminary.

CLASS I.—1913-1916.

WILLIAM N. HARTSHORN, Esq., Boston, Mass.

FRANK H. PECK, M. D., Atlanta, Ga.

D. G. GARABRANT, Esq., Bloomfield, N. J.

PROF. EDWIN C. MERRY, Atlanta, Ga.

CLASS II.—1914-1917.

REV. CHARLES W. DANIEL, D. D., Atlanta, Ga.

MRS. G. W. COLEMAN, Boston, Mass.

DEA. WILLIS MURPHY, Atlanta, Ga.

REV. CHARLES L. WHITE, D. D., New York, N. Y.

CLASS III.—1915-1918.

MRS. G. S. HARWOOD, Newton, Mass.

REV. EDWIN P. JOHNSON, D. D., Atlanta, Ga.

MRS. A. E. REYNOLDS, Swampscott, Mass.

MAJOR ROBERT J. GUINN, Atlanta, Ga.

HARVEY HATCHER, Esq., Atlanta, Ga.

*EXECUTIVE COMMITTEE,*

HARVEY HATCHER, Esq.,

REV. EDWIN P. JOHNSON,

MAJ. ROBERT J. GUINN,

MISS LUCY HALE TAPLEY,

PROF. EDWIN C. MERRY.



## FACULTY.

---

MISS LUCY HALE TAPLEY, *President.*

MISS EDITH V. BRILL, *Dean.*

---

### COLLEGE DEPARTMENT.

MISS M. LUCILE DESJARDINS, A. B.

---

### HIGH SCHOOL DEPARTMENT.

MISS ANNA SUTER, Principal,  
*Algebra, Ethics and English History.*

MISS LAURA AUSTIN DICKINSON, A. B., *Science.*

MISS FLORENCE L. DOUGLAS, A. B.  
*General History and Latin.*

MISS PAULINE H. FREEMAN,  
*Bible, Civics and Algebra.*

MISS MABEL H. PARSONS, *English.*

MISS ETHEL A. M. RICKMYRE,  
*Elocution, Reading, American Literature and Physical Culture.*

## TEACHERS PROFESSIONAL DEPARTMENT.

[Including Normal Practice School.]

MISS EDNA E. LAMSON, *Superintendent,  
Psychology, Pedagogy and History of Education.*

MISS MABEL E. ROGERS,  
*Principal of Grammar Department.*

MISS FLORENCE I. DELANO,  
*Principal of Primary Department, Drawing.*

MISS CLARA L. ALDEN.

MISS EDNA G. BACON.

MISS JESSIE B. COVEY, *English Methods.*

MISS MARINA EVERETT, *Geography and History Methods.*

MISS MAY C. HAMILTON, *Bible.*

MISS ROSA L. IRWIN, *Sewing and Methods.*

MISS WILHELMINA KURRELMEYER, A. B., *Arithmetic Methods.*

MISS C. HAZEL LATHE, *Normal Practice School.*

MRS. NANNIE H. LLOYD, *Normal Practice School.*

MISS HELEN A. McALPINE,  
*Physical Culture, Penmanship and Methods.*

MISS ROBERTA L. NOCK, *Normal Practice School.*

MISS GRACE E. ROGERS, *Primary Department,  
First and Second Grade Critic.*

MISS IDA L. SHELLENBERGER, *Cooking and Methods.*

MISS RUTH A. SMITH, A. B., *Normal Practice School.*

MISS FLORA B. STRICKLER, *Drawing and Manual Training.*

MISS MINNIE B. TIMSON, *Reading and Methods.*

MISS ELIZABETH C. TOWNS, *Agriculture, Nature Study and Methods.*

---

## MUSICAL DEPARTMENT.

MISS ELEANOR J. STEVENSON, *Vocal Music and Methods.*

MISS GERTRUDE H. ANDERSON, *Instrumental Music.*

MISS FLORENCE I. MONTGOMERY, *Instrumental Music.*

## NURSE TRAINING DEPARTMENT.

### ADVISORY COMMITTEE.

MISS LUCY HALE TAPLEY,      MOSES G. CAMPBELL, M. D.,  
   Chairman,      STEPHEN T. BARNETT, M. D.,  
MISS SARAH K. BOUTWELL,      L. SAGE HARDIN, M. D.

MISS SARAH K. BOUTWELL, R. N., *Dean of Hospital.*

MISS DAPHNE M. COPP, R. N., *Superintendent of Nurses.*

STEPHEN T. BARNETT, M. D., *Consulting Surgeon.*

WILLIAM S. KENDRICK, M. D., *Consulting Physician.*

#### *Surgeons.*

L. SAGE HARDIN, M. D.,  
J. F. DENTON, M. D.,  
W. E. PERSON, M. D.,  
W. A. SELMAN, M. D.

#### *Assistant Surgeons.*

W. E. YANKEY, M. D.,  
O. H. MATTHEWS, M. D.,  
J. R. McCORD, M. D.,  
J. D. MANGET, M. D.

#### *Physicians.*

MOSES G. CAMPBELL, M. D.,  
ROBERT G. STEPHENS, M. D.,  
CLAUD T. KEY, M. D.,  
J. H. HINES, M. D.

#### *Assistant Physicians.*

A. P. FLOWERS, M. D.,  
H. L. REYNOLDS, M. D.,  
G. F. SPEARMAN, M. D.,  
LUCIUS F. WRIGHT, M. D.

FRED G. HODGSON, M. D., *Orthopedic Surgeon.*

A. EVERETT WHEELER, M. D., *Oculist and Aurist.*

CLAUD T. KEY, M. D., *Anæsthetist.*

GUY L. BUSH, M. D., *Anæsthetist.*

---

## BOARDING DEPARTMENT.

MISS DORA L. KENDALL, *Matron, Teachers' Boarding Department.*

MISS CLARA A. HOWARD, *Matron, Students' Boarding Department and  
Supervisor of Work Students.*



## INDUSTRIAL DEPARTMENT.

MRS. EDNA CLOUSTON, *Dressmaking.*

MISS PINKIE M. JONES, *Dressmaking.*

MISS LAURA AUSTIN DICKINSON, A. B., *Agriculture.*

MISS ROSA L. IRWIN, *Sewing and Millinery.*

MISS LOLA E. NEAL, *Laundry.*

MISS IDA L. SHELLENBERGER, *Cooking and Sewing.*

MISS FLORA B. STRICKLER, *Manual Training.*

MISS ELIZABETH C. TOWNS, *Agriculture.*

MISS EVELINA O. WERDEN, *Printing.*

---

## HALL MATRONS.

MISS IDA W. DAVIS.

MISS PAULINE H. FREEMAN.

MISS C. MARIA GROVER.

MISS EDNA E. LAMSON.

MISS EGERIA V. MORSE.

MISS NELLIE O. SMITH.

MISS RUTH A. SMITH, A. B.

MISS MABEL A. TOPPING.

MISS ELIZABETH C. TOWNS.

MISS MIGNON S. WESTURN.

---

## OTHER OFFICERS OF THE INSTITUTION.

MISS ANGIE E. KENDALL, *Treasurer.*

MRS. NANCIE S. BRANN, *Registrar and Secretary.*

MRS. M. T. ADAMS, *Purchasing Agent.*

\* MISS GERTRUDE LE BARON, *Bookkeeper.*

\* MISS LILLIAN K. OSGOOD, “

MISS EVELINA O. WERDEN, *Editor, Spelman Messenger.*

MISS LAURA AUSTIN DICKINSON, A. B., *Librarian.*

\* MISS MIGNON S. WESTURN, *Instructor, Night School.*

MR. W. T. COURTNEY, *Superintendent of Buildings and Grounds.*

MISS CAMILLA WEEMS, *County Industrial Supervisor.*

---

\* Part of the year.

---

## GENERAL INFORMATION.

### FOUNDERS.

On the eleventh of April, 1881, Miss Sophia B. Packard and Miss Harriet E. Giles of Boston, under a commission from the Woman's American Baptist Home Mission Society, started a school for the elevation of girls and women of the Negro race, in the basement of Friendship Baptist Church, Atlanta, calling it the Atlanta Baptist Female Seminary. In 1883 the name was changed to Spelman Seminary; the institution was incorporated in 1888.

### NAME.

Spelman received its name in honor of the parents of Mrs. John D. Rockefeller, who were life-long friends of the Negro. Mr. Rockefeller was for many years one of the trustees, and he has invested large sums of money in its buildings and grounds.

### GROWTH.

In 1883 property was bought on the present site, and a boarding school was opened. Rapid growth followed. The tenth anniversary, which Miss Packard lived to celebrate, saw the school firmly established on a permanent basis. This thirty-fourth circular and catalogue shows the present condition.

### PROPERTY.

The school grounds contain twenty acres of elevated land, a mile from the center of Atlanta, on the line of the Walker St. electric cars. Ten brick buildings provide ample room for the boarding department, the literary and the industrial work. Reynolds Cottage is the residence of the president of the institution. In Rockefeller Hall are the office, the high school department, and a chapel with a seating capacity of a thousand. MacVicar Hospital is modern and completely equipped, with a fine operating room, a ward each for surgical and medical patients and a lecture room for nurses in training. The Nurses Home contains eleven bed rooms and a reception hall. Giles Hall was planned especially with reference to normal work. It contains two spacious assembly rooms, with twenty recitation rooms for the practice school, besides study and class rooms for student teachers, and a gymnasium. Four

other halls, viz.—Morgan, Packard, Morehouse and Rockefeller, furnish accommodation for three hundred boarders. A large library and reading room containing about four thousand volumes, and a hundred current periodicals, occupies the lower floor of one wing of Packard Hall. In its basement are commodious rooms for classes in domestic science and dressmaking. A building in the rear contains the printing office and music rooms. In the laundry are eighty-five porcelain tubs, each with hot and cold water attachment. There are also drying and ironing rooms. A steam and electric plant furnishes heat and light for the whole establishment.

#### MAINTENANCE.

The students pay about one-seventh of the current expenses. The Woman's American Baptist Home Mission Society and the Slater Fund make annual appropriations toward the salaries of teachers. The General Education Board makes an annual appropriation for salaries and current expenses. The American Baptist Home Mission Society contributes toward repairs, and for the remainder the school is dependent upon donations from individuals. There is an available endowment of \$30,591.83, the annual income from most of which is designated for special uses.

#### IDEALS.

Spelman stands first of all for Christian education, with the Bible for its corner-stone, and its motto, Our whole school for Christ. The Sabbath-school, hall and chapel prayer-meetings, meetings for inquirers and for converts, temperance and social purity meetings, Congo Mission Circle, Christian Endeavor Societies, a Young Women's Christian Association, a weekly meeting in school hours for boarders and day-pupils together, as well as daily devotions and a Sunday preaching service, have assigned places on the school program.

Spelman aims to make cheerful workers, who will look upon every kind of labor as honorable. Every boarding pupil must take a daily share in the necessary work of the institution, so that she may acquire habits of industry and neatness, and prepare herself for home-making.

Intelligence and skill in useful occupations are sought by systematic instruction in domestic science, cooking, sewing, dressmaking, millinery, printing, basketry, bench-work, and gardening.

Home training is gained by a division of the boarding students into nine groups, each of which has its separate dormitories, its cheerful sitting and study room, its seats in both chapel and dining room, its discipline, its hall-teacher, in short, its own family life.

#### FACULTY.

Every member of the faculty receives a commission from the Woman's American Baptist Home Mission Society. Each has been selected on account of special preparation and fitness for her department.



## ALUMNÆ.

Spelman is proud of the useful lives of her graduates. A record of the residence and occupation and every important event of her life is carefully kept for each alumna. It is requested that each alumna will communicate with her *Alma Mater* at least once a year, sending this information with her address for the catalogue.

## UNDERGRADUATES.

The lives of many of the undergraduates of the school are filled with self sacrificing and valuable work. Their influence is felt throughout the south land in improved schools and homes. It is earnestly requested that every former student will acquaint the school with her address and give information concerning herself and her work.

## GRADUATION.

The degree of Bachelor of Arts is given to those who honorably complete the college course. Diplomas are awarded to those who have completed the teachers professional, advanced music, high school or nurse training courses, and have passed all the required examinations, provided their deportment and moral character are satisfactory. Certificates are given to those who complete the preparatory course in instrumental music, cooking, dressmaking, millinery, and printing.

It is the attainment of the student, and not the number of years in school, that counts for the completion of a course.

## RECORDS.

A permanent record is kept of the scholarship, deportment, and manual labor of each student. The standing of any pupil can, at any time, be obtained from these records. Promotion from grade to grade in any study depends upon proficiency and merit, and not upon the time spent in the study.

## ANNUAL PRIZES.

The Mary E. Simmons Prize Fund provides for a prize of \$22.90 to the student of Spelman Seminary who writes and delivers the best essay on Self-Help. The Chamberlin Scripture Reading Prize Fund and the Lucinda Hayes Scripture Recitation Prize Fund present \$30 each, the amount in each case divided into three prizes and distributed among three groups of competitors as follows: to the successful competitor from the primary department \$5.00, from the grammar department \$10.00, and from the group above grammar grades \$15.00. The Seymour Finney Prize Fund offers three prizes of \$12, \$8, and \$5 respectively, to the best students in the graduating class.

## SCHOOL PAPER.

The SPELMAN MESSENGER, an eight-page paper, is published monthly during the school year. It contains school news, articles by students and others, letters from graduates, and personal items. It is the official

organ of the Seminary, and is of interest to all its friends. Its circulation is over a thousand. Subscription: thirty-five cents a year.

#### REQUIREMENTS.

Each student is expected to furnish her own table napkins, towels, 3 pillow cases, 4 sheets, of firm material, 2½ yds. long by 1½ yds. wide, soap, and an ironing holder, also dresser and table cover, if desired.

Each trunk **must be plainly marked with the owner's name.**

Boxes of food including boxes of crackers, wafers, etc., should not be sent to students. They will not be allowed to receive pickles, jelly, canned fruit, meats, or any other canned goods. They will be allowed to receive *fresh* fruit.

Letter writing is subject to regulation. The mail and express packages of students are inspected.

Dentistry should be done *before coming to school*, and not after the session opens.

The pupils can receive their friends on Saturdays, but *not* during regular exercises, *nor on the Sabbath.*

Students should plan their journeys so as not to arrive or leave on Sunday.

All students are expected to come directly from the train to the school and to return directly to their homes at the close of school, without visiting in Atlanta.

Students whose homes are not in Atlanta will not be received as day-pupils in Spelman Seminary without the written request of their parents or guardians, with information of the name of the person who agrees to be responsible for them while away from their homes.

#### CLOTHING.

Clothing must be sensible, neat, simple, and suitable. Expensive and showy dress and jewelry are out of place and in bad taste for school girls.

The students do not wear uniforms. For Sunday and *all dress occasions*, including Commencement receptions, plain white waists and dark skirts, wool dresses, or simple dresses which can be laundered, will be worn. Students will please not bring silk, net, chiffon, velvet, or any other fancy dresses, as they will not be allowed to wear them. These regulations are in the interests of health, economy, and good taste, and apply to *all students* in all departments.

Dark wash dresses, two dark petticoats, dark aprons, dark skirts, one pair of substantial high shoes, strong cotton stockings, an umbrella, and rubber overshoes must be brought from home. No silk hose will be allowed worn.

A list of articles contained in each trunk must be brought ready for the hall teacher, each article *distinctly marked with the owner's full name.*

**Rubbers are required**, as essential for the preservation of health.



## DEPARTMENT.

Pupils must be courteous to their school-mates and obedient and respectful to their teachers. No students are wanted or retained who have not sufficient character to appreciate their advantages, and to listen to reasonable advice and admonition.

Good order, diligence in study, neatness, cleanliness, industry, and economy are required of all.

The Seminary reserves the right to request, at any time during their course, the withdrawal of students who do not maintain the required standards of the school in scholarship, of those who cannot remain in the Seminary without danger to their own health or the health of others, and of those whose presence is found to lower the moral tone of the Seminary. Students of the last class may be asked to withdraw at any time when in the opinion of the faculty the welfare of the school demands it.

## ADMISSION.

Applicants for admission should send for application blanks, which are to be filled out and returned. They must also furnish testimonials of good moral character, and recommendations or certificates from the school last attended. They should wait until notified of their acceptance before coming to school. Students should arrive the day before the opening of school, so as to be present at the Chapel exercises at nine o'clock, and to be at the examinations that will immediately follow. There will be an extra charge of twenty-five cents for registration on and after the fifteenth of October. Those who are obliged to enter late will be received, but cannot expect to do as good work as those who are present at the beginning of the term, and they must not be disappointed if they miss promotion.

No girl should come to Atlanta with the expectation of entering as a day-pupil, since the number that can be received in each grade is limited, and preference is given to boarders and day-pupils whose homes are in this city.

## EXPENSES.

**All charges are payable 4 weeks in advance.**

**Students may be taken from classes in case payment is delayed ten days beyond the pay day.**

## PAY DAYS.

The school year is divided into eight periods of four weeks each. The first day of each school month of four weeks is pay day. The pay days for 1915-16 will be on Mondays as follows:—

Oct. 5, 1915	Jan. 31, 1916
Nov. 8, “	Feb. 28, “
Dec. 6, “	March 27, “
Jan. 3, “	Apr. 24, “



## RATES FOR DAY-PUPILS.

Normal Practice school, for four weeks	
Grades 1 and 2	\$ .60
Grades 3 to 8	\$1.00
Millinery department, for four weeks	
Day-students enrolled elsewhere	\$1.50
Special students (taking millinery only)	\$3.00
College department, for four weeks	\$2.00
All other departments, for four weeks	\$1.50

## RATES FOR BOARDERS.

<b>For four weeks</b> , board and instruction,	<b>\$10.00</b>
Entrance fee, payable annually by each student on entering,	\$3.00
Lecture fee, payable annually when entering	\$ .50

*Exceptions.*

Teachers Professional department, for four weeks	\$5.50
Nurse Training department	No charge

## BOOKS AND MATERIALS.

The approximate amount needed is as follows:

Primary department	
Grade 2	\$1.25
Grades 3 to 4	\$3.00
Grammar department	\$4.00
Teachers Professional department	
First year	\$6.00
Second year	\$4.00
High School department	\$5.00 to \$8.00
Dressmaking dept., deposit for material for 1st year,	\$10.00
"    "    "    "    "    "    2nd    "	\$20.00
Millinery dept., material for 1st year supplied by students,	\$4.50
"    "    "    "    2nd    "    "    "	\$6.00
"    "    "    "    3rd    "    "    "	\$10.00

## EXTRA FEES.

Lessons on organ, for four weeks	\$2.00
"    "    piano,    "    "    "    preparatory,	\$3.00
"    "    "    "    "    "    advanced,	\$5.00
For late examinations	\$ .25
Millinery dept., annual fee for material supplied by school	\$1.00

## GRADUATION FEES.

College department	\$3.00
Literary and Nurse Training departments	\$2.00
Industrial departments	\$ .50

**Bills must be paid promptly.** Delay renders the pupil liable to be suspended from recitations. The books and trunk of any student leaving school with bills unpaid may be retained as security.

If one advance payment is made for the entire year, a discount of six per cent will be allowed on board charge only.

No day-pupil will be examined for classification before the fee is paid for one month.

*Cash* payment must be made for books. This money should be **deposited on entering school.**

All money in payment of bills should be sent by money order, draft, registered letter, or express, directly to Miss Angie E. Kendall, treasurer, and not to the student. No other way is safe. Money should never be put into a letter, unless it is registered. Silver should never be sent by mail, as it often wears a hole through the envelope, and is lost. Send postage stamps, if necessary to make change.

---

No reduction can be made for absence for less than a week, nor for absence for a part of the first or last week of the term, nor for Christmas. No charge is made for instruction. The fees required are to cover incidental expenses.

Instrumental music is extra.

Arrangements are made for each student to do her own laundry work; in case she does not, she must pay extra. But no student will be allowed to exceed fifty cents per week in laundry charge. Students must pay for any damage done by them to the property of the school.

Students should not come expecting to pay any part of their expenses by work, unless they have previously made an arrangement for work with the president of the school. Credit cannot be given for unsatisfactory work. No work student can take music. No work student should expect to make as rapid progress as though she paid full board. Each student is expected to give an hour a day to the necessary work of the institution, for which she receives no pay.

---

For further information and for application blanks, address

THE PRESIDENT, MISS LUCY HALE TAPLEY,  
SPELMAN SEMINARY, Atlanta, Ga.

---

## DEPARTMENTS OF INSTRUCTION.

The departments of instruction are as follows: College, High School, Teachers Professional, Nurse Training, Industrial and Musical.

Thoughtfulness and thoroughness are the ideals of the literary courses, rather than the covering of an extensive field or the speedy arrival at graduation.

Special features of the several departments follow. See page 27 for the full courses.

## COLLEGE DEPARTMENT.

The college work is carried on conjointly with that of Morehouse College, some of the classes being under their professors, and some under Spelman teachers.

Graduates from other secondary schools will be admitted on passing a satisfactory examination.

## LATIN.

The college work in Latin embraces the study of Cicero's *De Senectute*, Livy (2 books), Horace's *Odes*, Tacitus' *Germania*, Terence's *Phormio*, Latin composition, and Roman life.

## GERMAN.

The German course includes masterpieces of German literature from Goethe, Schiller, and Lessing, and modern idiomatic German as found in the comedies of Benedix, Arnold, Helbig, Moser, and Heiden.

## MATHEMATICS.

Three half courses are given in plane trigonometry, solid geometry, advanced algebra and descriptive astronomy.

## HISTORY.

Four half-courses in History are offered, all being open to students above the Freshman year. Two are required, and the two must include History 1.

1. A half-course in the Foundation of Modern Europe. The work follows in general the plan of Trenholme's "A Syllabus for the History of Western Europe."

2. A half-course in the Rise and Development of the English Constitution. Text: Macy's "The English Constitution."

3. One in American History with emphasis on the Critical and Reconstructive Periods.

4. One in the essentials of Negro American History.

## ENGLISH.

English 5. (The number of the course for convenience follows the numbers of courses in the High School). In the work of this course, which is required of all Freshmen, the emphasis is on practical work in composition. The large aim of the course is the development of power in expression. Attention is given to the theory of Description, Narration, Exposition, and Argumentation; but at least five-sixths of the lessons of the year are assignments in composition. Papers range in length from 200 to 2,000 words. In addition to numerous smaller themes in each of the large fields mentioned, and including the writing of anecdotes, news items, editorials, and sketches, each member of the course is required to write a short story, a full piece of work in exposition, two orations, two long briefs, one forensic, and two book reviews. Necessarily most of the reading consists of library assignments, but the following texts are required: Cairn's "Forms of Dis-



course"; Erskine's "Written English"; Shakespeare's "The Tempest"; and the classics in Maynard's "English Classic Series" giving Macaulay's "Essay on Byron," De Quincy's "Joan of Arc," and selections from Ruskin's "Modern Painters."

English 6. This course covers in broad outline the field of English Literature from Anglo-Saxon times to the present. The method of study emphasizes detail and technique as well as appreciation. Text-book work is supplemented by library readings, especially in the drama. Several short themes and one longer essay of two thousand words are called for in connection with the work.

#### SCIENCE.

Physics.—The course includes physical measurements in mechanics, heat, sound, light, magnetism and electricity.

Chemistry.—A course is given in descriptive and industrial chemistry, with qualitative analysis and practical applications.

Geology.—The course includes side reading, laboratory work, and excursions.

Biology.—The course in biology is designed to show that the life processes of plants and animals are similar. For a clear comprehension of these processes emphasis is put upon life structure.

Astronomy.—An elective half-course in astronomy is given to create true ideas of the motion and conception of the heavenly bodies. The work consists of lectures, laboratory experiments, lantern slide observations, and field work.

#### BIBLE.

Three half courses are given. The object is to give a comprehensive knowledge of the whole Bible, with minute studies of important parts and subjects. The effort is made to develop interest in and love for the Bible, and the classes are conducted in the religious spirit.

#### LOGIC.

The outlines of normal logic are studied, with special attention to terms and their meaning, to the logical import of propositions with a view of inculcating accuracy of statement, and to analysis of arguments and detection of fallacies.

#### PSYCHOLOGY.

The course takes up the nervous system; sensation and the organs of sense; the facts of consciousness studied from the natural science point of view; perception, memory, imagination, emotion, the will; and the relation of psychology to philosophy and ethics.

#### PEDAGOGY.

A full course is offered. The first half of this is in the history of education, and the second half is in pedagogy.

#### ETHICS.

The subject of ethics is treated historically, and the various types of ethical theory are traced in their development from ancient times.

Search is made for the elements of truth in all theories, and the superiority of the ethics of Christianity is shown.

ECONOMICS.

The course in economics gives special attention to the production, distribution, and exchange of wealth.

SOCIOLOGY.

The course in sociology presents a general outline of the subject, and makes a special study of the social condition of the Negro race in America.

HIGH SCHOOL DEPARTMENT.

The High School has two courses of four years each, the English-Normal Course, and the English-Latin Course.

Girls who have satisfactorily completed a grammar school course will be admitted to the high school department.

Graduates of the English-Normal course are prepared to enter the teachers professional department with a part of the work already done; graduates of the English-Latin course are ready to begin either the teachers professional or the college work.

The first year of the English-Normal course is devoted to instruction in methods of teaching reading, arithmetic, language, geography and history, in connection with reviews; and to observation in the practice school and lessons in school management. This arrangement is made for the sake of the many who are unable to give several years to study beyond a grammar school course, but who will become teachers. Students under fifteen years of age will not be allowed to take this work, but will pass at once to the studies outlined for the second year. They must have the normal work, however, previous to graduation.

Beginning with the year 1912-13 the English-Normal High School Course was enriched by two lines of electives which are offered to students of that course whose ability to take extra work is demonstrated. *One* of these electives consists of correlated subjects,—type-writing, bookkeeping, and shorthand,—distributed throughout the course. *The other* elective is offered to juniors and seniors only, and consists of *either* two years of Latin *or* one year of German. Choice of elective must be made at the beginning of the course as no student will be allowed to take both and no one will be expected to change elective. Type-writing is offered in the first year to those whose scholarship enables them to pass examination in two or more of the English reviews. Instruction is free, a charge being made for use of typewriter only. Students electing the Latin or German may be excused from bookkeeping.

---



## TEACHERS PROFESSIONAL DEPARTMENT.

## GENERAL AIM.

The work of this department is to provide trained teachers for the schools. It has become an established fact that all schools need such teachers. In an increasingly large number of cities, towns, and states, only trained teachers are employed.

## SPECIAL AIMS.

The first specific aim of the Teachers Professional Department of Spelman Seminary is to inspire the student with the spirit of the true teacher. She must catch the spirit of service, must love her work, and must realize that she has a mission to accomplish. She must have the spirit of the Great Teacher as the first requisite in this great work.

The second aim of this department is to give the student a thorough preparation for teaching all branches now found in our best elementary schools. The normal student now takes up these subjects from the view-point of the teacher as well as from the student's position. She must think the thoughts of her pupils and find the process by which they know ; and she must discover the means the teacher is to use to bring about this result.

All the subjects in this course are taken up professionally, and are studied in their direct bearing upon teaching. This work includes both matter and method in all the common school branches: reading, writing, spelling, grammar, language, geography, arithmetic, primary number, nature study, music, drawing, physical culture, sewing, cooking, basketry, and bench work.

The third aim is to arrive at the principles of education which underlie all true teaching, through the study of man. Psychology is taught with this end in view. The students make a practical study of children, under the guidance of an experienced instructor. This study is followed by the history of education, the art of teaching, school organization and school management.

## REQUIREMENTS FOR ADMISSION.

All candidates for admission must be at least sixteen years of age. They must be young women of good moral character.

They must be graduates from a high school whose courses of study are known and approved by the faculty of Spelman Seminary, or they must prove that they have had such a course or its equivalent by an examination given by the superintendent of the teachers professional department.

All students registering for the course should be present on the opening day, or before, and should continue through the school year, when it is possible to do so.



## GRADUATION.

The time required for the completion of this course depends upon the previous preparation, ability, and physical strength of the student. It may be completed in two years by a few; the greater number of students need two and a half years; while some take three years to complete the course with credit. A diploma is given when the course is satisfactorily completed.

## NORMAL PRACTICE SCHOOL.

The common English branches are taught after the most approved methods in the Normal Practice School. The work is so arranged that promotions are made twice a year. Special attention is called to this feature because new work will be begun at mid-year, Jan. 25, 1915, as well as in September. In some of the grades, however, it is necessary to be present at the opening of school in September in order to secure a seat. Any student expecting promotion should be in school at the opening and should remain for the first term of seventeen weeks; or she should enter in January and remain until school closes in May. Promotion made in a previous year may be lost if entrance is late.

The practice school has a prominent place in the training of the normal students. Throughout their course they are required to do observation work or practice teaching in grades from one to eight inclusive. Each normal student is required to teach at least ten subjects, each subject for a period of eight weeks, before receiving a diploma.

## NURSE TRAINING DEPARTMENT.

The Nurse Training Department has superior facilities for training nurses for the sick. MacVicar Hospital, new, modern, and fully equipped, contains thirty-one beds. It has a central administration building with two wings, one for medical, the other for surgical cases. This affords ample accommodation, not only for students, but also for outside cases. Men and women, either residents of Atlanta, or non-residents, are admitted for treatment.

The very best skill of doctors and nurses is given at prices so reasonable that patients find the expense no greater than if they were treated in their own homes. A parent, guardian, or nearest relative of student applying to the hospital for relief by operation must furnish written consent to such operation. In an emergency case, when immediate relief is imperative, the right to operate without such written consent is reserved.

The course of study embraces all the subjects that concern caring for the sick after the most approved methods, such as the theory of nursing and *materia medica*; bandaging, keeping of record charts, dietetics, nursing ethics, fever nursing, nursing in contagious diseases, surgical nursing, (including the principles of asepsis and care of operative cases) and obstetrical nursing.

Applicants for this department must have a good English education, good moral character, good health, and must be at least twenty years of age. Nurses are on probation for three months. It is useless for one to begin this course without an earnest purpose and an intention to make its work her single aim. The entire time for three years must be given to study and to practical work. A vacation of three weeks is allowed each pupil nurse each year. An aggregate of six weeks during the course will be allowed in case of illness, without charge, but time must be made up. If more time is lost from any other cause, it also must be made up before a diploma will be given. In this, as in other departments, graduation does not depend upon time alone, but upon satisfactory work.

Students will be received into this department at the beginning of each half year only.

#### MUSICAL DEPARTMENT—VOCAL.

There are three distinct lines of work : First, theory and sight-singing, including subject matter; Second, method, including the fundamental principles of education as applied to the teaching of music; Third practice in teaching music under the supervision of the vocal music teacher. Chorus training also forms an important feature of the work,

#### MUSICAL DEPARTMENT—INSTRUMENTAL.

In this department piano and organ lessons are given, special attention being paid to exercises which develop a correct touch. Those who finish the preparatory course outlined on page 30 will receive a certificate and are prepared for a college course in piano. Arrangements are now made for an advanced course to follow this college preparatory course. The department is unable to receive all who apply for admission. No student will be allowed to continue instrumental music who does not show aptitude and conscientious effort, but will be dropped and the opportunity given to another.

Each music student is required to be present at the recitals held every two weeks, at which students are the performers.

Haines Bros.' pianos are used exclusively.

#### INDUSTRIAL DEPARTMENT.

The Industrial Courses are as follows: cooking, sewing, dressmaking, millinery, basketry, bench-work, printing, laundering, agriculture and poultry culture. Printing, dressmaking, millinery and poultry culture are elective; the others have definite places on the general program. No boarding student can give her whole time to any of these except dressmaking. She must also enter some literary class.

#### DRESSMAKING.

An applicant for dressmaking must be at least sixteen years of age, and must be as far advanced in her studies as the sixth grade. A test will



be given in plain sewing, and no one will be accepted who is not neat and skilful with the needle. No one will be received who does not intend to remain through the year. All will be on probation and any one will be dropped who does not show aptitude for the trade. There is not room for all who apply, and late comers will lose their places.

Ten dollars must be deposited at the beginning of the first year's work to cover the cost of necessary tools, and for materials for required underwear, one plain shirt waist, one lawn shirt waist, one lawn dress, one tub dress and one wool skirt.

Twenty dollars must be deposited for second year work (ten dollars at the beginning of the year and ten dollars at midyear) to cover the cost of materials for one tub dress, one fitted lining, one silk waist, one tailored suit, one dress and one graduation dress. All of the above articles are to be the property of the student when completed. These deposits are necessary in order to avoid delays in the purchase of materials for the required work. Materials will not be accepted in place of money as all goods for required work are to be purchased by the school. Each student entering dressmaking should bring with her a pin cushion, work bag, and three white aprons.

#### MILLINERY.

This is a three years' course of one and one-half hours weekly. Special students who take only millinery may complete the course in less time.

The object of this course is to afford training in the practical and artistic principles of millinery, and to cultivate taste in color and design. Theory and practice are so combined as to enable the student to make hats and bonnets, choosing such designs and trimmings as are suitable for various occasions and individuals.

The applicant for millinery must have a fair knowledge of hand sewing. There is no charge to boarding students for instruction, but one dollar must be paid each year for practice materials furnished by the school, and in addition a deposit will be required from every student when entering millinery to cover the cost of materials for practice work, pliers, and for one summer hat. Second year, \$6.00 for materials for practice work and for one winter hat and one summer hat. Third year, \$10.00 for materials for two winter hats and two summer hats. The hats when completed will become the property of the student. Day students taking millinery are required to pay two-thirds of the yearly tuition for the same in advance. Students entering this department will be expected to finish the three-year course.

---



---

**SPECIAL ANNOUNCEMENTS.**

All applicants for admission to Spelman Seminary should write for an application blank, which is to be filled out and returned. No student should start for school until notified that she is accepted.

On the 4th and 5th of October there will be some one at the stations to meet incoming trains. We cannot promise to meet any one after the 7th of October. In notifying us of the coming of a student, please be sure to specify the road over which she will arrive, as there are two stations in Atlanta, and instruct her to arrange at the station for her baggage to be sent to the school.

Students who intend to enter classes at mid-year, January 31, 1916, should be classified the previous week. On January 26 and 27 the fee of twenty-five cents for late registration will not be charged.

Do not fail to bring money for books and materials. See page 16. It wastes valuable time to send home for it.

**DO NOT FAIL TO BRING RUBBERS OR SIXTY-FIVE CENTS EXTRA TO BUY A PAIR.**

A special piano course is open to advanced students prepared for conservatory instruction, which allows several hours a day for practice. Voice training and methods of teaching vocal music may also be taken in this connection.

Students will observe carefully the first requirement on page 14, regarding sheets and pillow cases.

All students desiring to return in the fall should write and secure room on or before Sept. 1.

An entrance fee of \$3.00 will be required annually of each boarding student, payable when entering, as stated on page 16.

Emphasis will be placed on the regulations concerning dress and boxes of food; see page 14.

A fee of fifty cents payable on entrance will be charged for lectures. This will entitle each boarder to each number of the lecture course without further charge.

Attention is called to the change in arrangements for the expenses of the dressmaking and millinery departments as shown on pages 16 and 24.

A male ward has been opened at MacVicar Hospital for medical and surgical cases. See Nurse Training Department, page 22.

## COURSES OF STUDY.

[The figures indicate the number of recitations per week.]

### COLLEGE COURSE.

The following is the course of study. The figures in the outline indicate the number of recitations per week. While for convenience the work is here arranged by years, after the Freshman year the elective system is in some degree in force. The following courses are those to which the elective principle may apply: Latin 6, Greek 4, Sociology, German 2, Advanced Bible, two of the four half-courses in History, and the half-courses in Analytics, Astronomy, and Biology. The requirement for graduation is to pass in 18 courses. The full course in Pedagogy is required. A course is the pursuit of one subject throughout a school year, with four recitations per week. A half-course is a subject similarly pursued for half a year, or the pursuit of one subject throughout a school year with two recitations per week. The degree of Bachelor of Arts is conferred upon those who finish the work of the College.

#### FRESHMAN YEAR.

First Term.		Second Term.	
ENGLISH 5	4	ENGLISH 5	4
SOLID GEOMETRY	4	ALGEBRA	4
LATIN OR GERMAN OR GREEK	4	LATIN OR GERMAN OR GREEK	4
PHYSICS	4	PHYSICS	4
ENGLISH BIBLE	2	ENGLISH BIBLE	2

#### SOPHOMORE YEAR.

First Term.		Second Term.	
ENGLISH 6	4	ENGLISH 6	4
LATIN 5	4	LATIN 5	4
GREEK OR GERMAN	4	GREEK OR GERMAN	4
CHEMISTRY	4	CHEMISTRY	4
TRIGONOMETRY	4	ANALYTICS	4

## JUNIOR YEAR.

First Term.		Second Term.	
ECONOMICS	4	ECONOMICS	4
PSYCHOLOGY	4	LOGIC	4
HISTORY	4	HISTORY	4
LATIN 6	4	LATIN 6	4
GERMAN OR GREEK	4	GERMAN OR GREEK	4
ENGLISH BIBLE	4	ENGLISH BIBLE	4

## SENIOR YEAR.

First Term.		Second Term.	
HISTORY OF EDUCATION	5	PEDAGOGY	5
ETHICS	4	ETHICS	4
SOCIOLOGY	4	SOCIOLOGY	4
HISTORY	4	HISTORY	4
GEOLOGY	4	GEOLOGY	4
BIOLOGY	4	ASTRONOMY	4

## HIGH SCHOOL COURSES.

## ENGLISH-NORMAL.

## FIRST YEAR.

ARITHMETIC REVIEW	5	PRIMARY NUMBER METHODS	5
GEOGRAPHY	5	GEOGRAPHY METHODS	5
GRAMMAR	5	LANGUAGE METHODS	5
HISTORY METHODS	5	READING METHODS	5
BIBLE—O. T. HISTORY	5	SCHOOL MANAGEMENT	5
TYPEWRITING (ELECTIVE)	5	TYPEWRITING (ELECTIVE)	5

Method and Review classes are held during both semesters to meet the needs of *all* the students in the course.

## SECOND YEAR.

RHETORIC AND COMPOSITION	5	RHETORIC AND COMPOSITION	5
ALGEBRA	5	ALGEBRA	5
BIBLE—LIFE OF CHRIST	5	PHYSIOLOGY	5
READING	5	READING	5
CIVICS	5	AGRICULTURE	3

## THIRD YEAR.

AMERICAN LITERATURE	5	AMERICAN LITERATURE	5
PHYSICS	5	PHYSICS	5
ALGEBRA	5	GEOMETRY	5
ELEMENTARY BOOKKEEPING	3	BIBLE—AP. CH. HISTORY	4
ELOCUTION	1	ELOCUTION	1



PHYSICAL GEOGRAPHY	3	LATIN (ELECTIVE)	5
LATIN (ELECTIVE)	5	TYPEWRITING (ELECTIVE)	5

## FOURTH YEAR.

ENGLISH LITERATURE	5	ENGLISH LITERATURE	5
GENERAL HISTORY	5	GENERAL HISTORY	5
CHEMISTRY	5	ETHICS	3
ELOCUTION	1	ELOCUTION	1
LATIN OR GERMAN (ELECTIVE)	5	BOTANY	5
SHORTHAND (ELECTIVE)	4	LATIN OR GERMAN (ELECTIVE)	5
		SHORTHAND (ELECTIVE)	5

## ENGLISH—LATIN.

## FIRST YEAR.

RHETORIC AND COMPOSITION	5	RHETORIC AND COMPOSITION	5
ALGEBRA	5	ALGEBRA	5
BIBLE—O. T. HISTORY	5	PHYSIOLOGY	5
READING	5	READING	5
LATIN	5	LATIN	5

## SECOND YEAR.

RHETORIC AND LITERATURE	5	RHETORIC AND LITERATURE	5
ENGLISH HISTORY	5	GEOMETRY	5
CIVICS	5	BIBLE—LIFE OF CHRIST	5
LATIN	5	LATIN	5
PHYSICAL GEOGRAPHY	3		

## THIRD YEAR.

AMERICAN LITERATURE	5	AMERICAN LITERATURE	5
GENERAL HISTORY	5	GENERAL HISTORY	5
GEOMETRY	5	BIBLE—AP. CH. HISTORY	4
LATIN	5	LATIN	5
PHYSICS	5	PHYSICS	5
ELOCUTION	1	ELOCUTION	1

## FOURTH YEAR.

ENGLISH LITERATURE	4	ENGLISH LITERATURE	4
ALGEBRA	5	ETHICS	3
CHEMISTRY	5	CHEMISTRY	5
LATIN	5	LATIN	5
GERMAN	4	GERMAN	4
ELOCUTION	1	ELOCUTION	1

During the High School Course there is instruction in Vocal Music Physical Culture, Drawing, Sewing, Cooking, and Temperance.

---

**TEACHERS PROFESSIONAL COURSE.**

PSYCHOLOGY	METHODS IN PRIMARY NUMBER
HISTORY OF EDUCATION	“ “ READING
PEDAGOGY	“ “ PENMANSHIP
BASKETRY (ELECTIVE)	“ “ SEWING
BENCH-WORK	“ “ LANGUAGE
ARITHMETIC, WITH METHODS	“ “ NATURE
GRAMMAR “ “	“ “ DRAWING
GEOGRAPHY “ “	“ “ MUSIC
U. S. HISTORY “ “	“ “ COOKING
PRACTICE TEACHING AND OBSERVATION IN PRACTICE SCHOOL OF EIGHT GRADES	

---

**NORMAL PRACTICE SCHOOL.**

ARITHMETIC	NATURE STUDY
BASKETRY AND BENCH-WORK	PENMANSHIP
BIBLE	PHYSICAL CULTURE
COOKING	READING
DRAWING	SEWING
GARDENING AND AGRICULTURE	SPELLING
GEOGRAPHY	TEMPERANCE
GRAMMAR	UNITED STATES HISTORY
LANGUAGE	VOCAL MUSIC

---

**MUSICAL COURSES.**
**PREPARATORY.**

KÖHLER'S PRACTICAL METHOD, BOOK I.

OR MATTHEW'S STANDARD GRADED COURSE, BOOK I.

EASY STUDIES BY LÆSCHORN, HELLER, AND LEMOINE

EASY PIECES BY SCHUMANN, HELLER AND GURLITT

CZERNY'S OP. 299, BOOKS I., II., AND III.

KÖHLER'S OP. 50 BACH'S INVENTIONS (2 part and 3 part)

SONATAS BY HAYDN, MOZART, AND BEETHOVEN

MENDELSSOHN'S SONGS WITHOUT WORDS HARMONY AND THEORY

**ADVANCED.**

ADVANCED STUDIES BY CZERNY AND CRAMER

HELLER'S ART OF PHRASING SONATAS BY BEETHOVEN (Continued)

STUDIES FROM CLEMENTI'S GRADUS SUITES BY BACH AND HANDEL

OCTAVE STUDIES BY LÆSCHORN AND CZERNY

ADVANCED STUDIES BY BACH AND HANDEL

## INDUSTRIAL COURSES.

## DOMESTIC ARTS.

## First Year.

CARE OF KITCHEN UTENSILS  
 FOOD PRINCIPLES  
 PLAIN COOKING

## Second Year.

CARE OF SILVER AND CHINA  
 SERVING  
 CANNING AND PICKLING  
 ADVANCED COOKING

## Third Year.

HOME ECONOMICS  
 MENUS

INVALID COOKERY  
 LUNCHEON AND DINNER DISHES  
 SERVING A LUNCHEON

## DRESSMAKING.

## First Year.

STUDY OF TEXTILES  
 WORK WITH PRACTICE MATERIALS  
 DRAFTING PATTERNS

CUTTING, FITTING, AND MAKING  
 UNLINED DRESSES

## Second Year.

DESIGNING, CUTTING, FITTING, AND MAKING LINED DRESSES,  
 STREET SUITS AND JACKETS.

## MILLINERY.

FRAME MAKING, BOW MAKING, HAT TRIMMING  
 DESIGNING, MAKING AND TRIMMING OF COVERED, VELVET, LACE AND  
 SHIRRED HATS, BONNETS, AND TOQUES  
 MOURNING BONNETS AND CHILDREN'S HATS

## SEWING.

BASTING  
 RUNNING  
 BACKSTITCHING  
 STITCHING  
 HEMMING  
 OVERCASTING  
 DARNING  
 PATCHING  
 OVERHANDING

BUTTONHOLE MAKING  
 GATHERING  
 FELLING  
 TUCKING  
 RUFFLING  
 HEMSTITCHING  
 CROSS-STITCHING  
 MARKING  
 CUTTING & MAK'G PLAIN GARMENTS

## AGRICULTURE.

KINDS OF SOIL  
 FERTILIZERS  
 PREPARATION OF SOIL  
 PLANT PROPAGATION  
 TRANSPLANTING

GATHERING  
 PREPARATION FOR MARKET  
 PLANT DISEASES  
 INSECT PESTS  
 PRACTICAL GARDENING



## BASKETRY.

MATERIALS  
MATS, PLAITS, NETS

COILS, WEBS, BORDERS  
CHAIR CANING

## PRINTING.

EARLY DAYS OF PRINTING  
KINDS AND SIZES OF TYPE  
KNOWLEDGE OF CASE  
RULES OF A PRINTING OFFICE  
TYPESETTING

DISTRIBUTING  
TAKING OF PROOFS  
PROOF-READING  
TECHNICAL TERMS  
JOB WORK

## PRIZE WINNERS.

The Seymour Finney Prizes,	{	WILLYE V. OVERSTREET, 1914	
		LENA L. JONES, 1914	
		ANNA ETHELYN GARDNER, 1914	
The Mary E. Simmons Prize (Self Help),		JANIE L. LESTER, 1915	
The Chamberlin Scripture Reading Prize,			1915
		CARRIE L. DUKES, Coll., ETHEL E. MCGHEE, Gr.,	
		DAISY EARLY, Pr'y.	
The Lucinda Hayes Scripture Recitation Prize,			1915
		JANIE L. LESTER, Coll., GORDIE ADAMS, Gr.	

## SUMMARY.

College Department . . . . .	10
High School . . . . .	173
Teachers Professional Department . . . . .	31
Normal Practice School . . . . .	353
Nurse Training . . . . .	21
Dressmakers . . . . .	36
Night school Only . . . . .	14
Whole number of Students . . . . .	643
<hr/>	
Agriculture . . . . .	162
Basketry . . . . .	102
Cooking . . . . .	165
Dress-making . . . . .	36
Millinery . . . . .	13
Nature Study . . . . .	234
Printing . . . . .	24
Sewing . . . . .	360
Benchwork . . . . .	81
Instrumental Music . . . . .	79
Vocal Music . . . . .	476
Boarders . . . . .	354
Day-pupils . . . . .	289
Number of pupils under 16 years of age . . . . .	179
Number between 16 and 25 years of age, inclusive . . . . .	458
Number over 25 years of age . . . . .	6
Students from Georgia . . . . .	522
"    "    Alabama . . . . .	35
"    "    Florida . . . . .	25
"    "    Mississippi . . . . .	11
"    "    South Carolina . . . . .	8
"    "    Arkansas . . . . .	7
"    "    Tennessee . . . . .	6
"    "    Kentucky and No. Carolina, four each . . . . .	8
"    "    Illinois and Oklahoma, three each . . . . .	6
"    "    Virginia, Texas, and New York, two each . . . . .	6
"    "    Other states, one each . . . . .	4
"    "    Panama . . . . .	2
"    "    Congo Free State . . . . .	1
"    "    Colombia . . . . .	1
"    "    Canal Zone . . . . .	

---

## \* CATALOGUE OF STUDENTS.

---

### COLLEGE DEPARTMENT.

#### SENIORS.

BROWN, LILLA M. . . . .	Atlanta, Ga.
DUKES, CARRIE L. . . . .	Augusta, Ga.
GLENN, ISABEL K. . . . .	Atlanta, Ga.
LESTER, JANIE L. . . . .	Eastman, Ga.
YOUNG, ANNIE M. . . . .	Augusta, Ga.

#### JUNIORS.

BROWN, FELICIA S. . . . .	Little Rock, Ark.
BROWN, VIRGINIA H. . . . .	Athens, Ga.
LATIMER, ROSA C. . . . .	Atlanta, Ga.

#### SOPHOMORE.

BLOCKER, ANNE S. . . . .	Augusta, Ga.
--------------------------	--------------

#### FRESHMAN.

WIMBISH, EMMA . . . . .	Atlanta, Ga.
-------------------------	--------------

---

### HIGH SCHOOL DEPARTMENT.

#### ENGLISH-LATIN.

##### SENIORS.

BARRETT, J. LOUISE . . . . .	Hampton, Va.
SHOCKLIN, NAOMI A. D. . . . .	Atlanta, Ga.

##### THIRD YEAR.

FISHER, ANNIE E. . . . .	Mobile, Ala.
HENDRICKS, FREDERICA A. . . . .	Asheville, N. C.
HUDSON, LOUISE E. . . . .	Warrenton, Ga.

---

\*The names of students who were not in school long enough to make a satisfactory record are omitted. The catalogue is compiled immediately after the mid-year examinations.



LITTLEJOHN, OLEA N. . . . .	Spartanburg, S. C.
LOTT, RUTH D. . . . .	Memphis, Tenn.
O'NEAL, HATTIE J. . . . .	Brooksville, Miss.
SYKES, MAMIE ESTELLA . . . . .	Decatur, Ala.
WASHINGTON, ELLA E. . . . .	Birmingham, Ala.
WRIGHT, MARY LOU . . . . .	Atlanta, Ga.
WRIGHT, NAOMI S. . . . .	Atlanta, Ga.

## SECOND YEAR.

BROWN, PAULINE S. . . . .	St. Augustine, Fla.
BROWN, SUSIE LEE . . . . .	Griffin, Ga.
ELKINS, ELLA MAE . . . . .	Rome, Ga.
GORDON, RUTH T. . . . .	Forsyth, Ga.
HARRIS, L. PAULINE . . . . .	Dalton, Ga.
HOLLEY, ROWENA V. . . . .	Palatka, Fla.

## FIRST YEAR.

BRYANT, EMILY K. . . . .	Gainesville, Ga.
BUGG, EMMIE LILA . . . . .	Atlanta, Ga.
JOHNSON, ALBERTA M. . . . .	So. Atlanta, Ga.
JOHNSON, ESSIE . . . . .	Arkansas City, Ark.
JOHNSON, MARY W. . . . .	Mayfield, Ga.
JONES, EVA D. . . . .	Danville, Ky.
MCGINTY, RUBIE A. . . . .	Atlanta, Ga.
PORTER, DYMPL E L. . . . .	Hot Springs, Ark.
REESE, LILLIE E. . . . .	So. Atlanta, Ga.
SHOWERS, AGNES L. . . . .	Little Rock, Ark.
SIMPSON, FANNIE L. . . . .	New Orleans, La.

## ENGLISH-NORMAL.

## SENIORS.

BAILEY, LILLIAN A. . . . .	Hampton, Va.
BROCKWAY, INEZ P. . . . .	Oklahoma City, Okla.
BROWN, ADA C. . . . .	Tampa, Fla.
CHAMBLEE, SAVANNAH L. . . . .	Curryville, Ga.
CLARK, MARY E. . . . .	W. Rome, Ga.
EUBANKS, GENEVA B. . . . .	Atlanta, Ga.
FULLMIGHTER, ADELAIDE S. . . . .	Hot Springs, Ark.
HUBERT, ESTHER L. . . . .	White Plains, Ga.
MCCAULEY, MATTIE L. . . . .	Tallapoosa, Ga.
PERRY, MAGGIE L. . . . .	Atlanta, Ga.
PETERS, LEANNA J. . . . .	Mobile, Ala.
WARD, ANNIE LEE . . . . .	Atlanta, Ga.
WARE, IZETTA H. . . . .	La Fayette, Ala.
ZETO, FLORA F. . . . .	Lukunga, Congo.

## THIRD YEAR.

ALEXANDER, IDIENE M.	Moulton, Ala.
BATTLE, IDA VALERIA	Corinth, Miss.
BLOUNT, NELLIE	Birmingham, Ala.
CARLETON, ANNIE MAE	La Fayette, Ala.
CRAWFORD E. IONA	Atlanta, Ga.
DURANT, MARION	Atlanta, Ga.
EMORY, MATTIE L.	Mountville, Ga.
EUBANKS, BESSIE R.	Atlanta, Ga.
GARNER, SALLIE P.	Gabbettville, Ga.
GERMANY, ADDIE	Augusta, Ga.
GLASS, M. MAGNOLIA	Rome, Ga.
GRAVES, MADELINE	Atlanta, Ga.
HAMILTON, HATTIE M.	Rome, Ga.
HARDY, CARRIE L. J.	Atlanta, Ga.
HUMPHRIES, CLAIRE LEE	Rome, Ga.
JONES, JULIA M.	Danville, Ky.
KEEBLER, ALICE J. M.	Atlanta, Ga.
KELLEY, KATIE L.	La Grange, Ga.
KOYTON, LILLIE B.	Bessemer, Ala.
MASON, EDNA E.	Atlanta, Ga.
MATTISON, EVA O.	Williamston, S. C.
MILLS, DOROTHY	De Land, Fla.
NELSON, EULA R.	Laurel, Miss.
O'NEAL, ANNIE B. L.	Memphis, Tenn.
PITTS, ERSAN.	Atlanta, Ga.
ROBINSON, EFFIE I.	Union, S. C.
SIMPKINS, N. CECILE	Daytona, Fla.
SUTHERLAND, BIRDIE L.	Dalton, Ga.
TAYLOR, J. BEATRICE	Daytona, Fla.
THRASHER, GERTRUDE	Atlanta, Ga.
WALKER, FRANCES E.	Chattanooga, Tenn.
WILLIAMS, ANNIE P.	Milledgeville, Ga.

## SECOND YEAR.

ADAMS, LEILA B.	Watkinsville, Ga.
BATES, MARY F.	Lithonia, Ga.
BETTS, BENNIE V.	Atlanta, Ga.
BONNER, SADIE B.	Washington, Ga.
BOYD, INEZ M.	Selma, Ala.
BROWN, NAOMI F.	Atlanta, Ga.
BUTLER, NELLIE G.	Atlanta, Ga.
COLLINS, EDNA	Atlanta, Ga.
CUMMINGS, MALINDA E.	Dublin, Ga.
DENT, BERTHA M.	Atlanta, Ga.

---

DISMUKE, REPTA L. . . . .	Atlanta, Ga.
DIXON, LILLIAN T. . . . .	Culverton, Ga.
DUKE, RUTH L. . . . .	Rome, Ga.
FOSTER, BEATRICE A. . . . .	Savannah, Ga.
GATES, CORA B. . . . .	Chattanooga, Tenn.
GOINS, NANNIE C. . . . .	Jefferson City, Mo.
GREEN, SUSIE H. . . . .	Wadley, Ga.
GRESHAM, L. ESTELLE . . . . .	Dalton, Ga.
HARPER, OSCEOLA E. . . . .	Arlington, Ga.
HARRIS, FLORENCE A. . . . .	Atlanta, Ga.
HENDRIX, MARY A. . . . .	Rome, Ga.
HIGHTOWER, LOTTIE M. . . . .	Rome, Ga.
HOLMES, JESSIE I. . . . .	Atlanta, Ga.
HUTCHENS, ESSIE LEE . . . . .	Columbus, Ga.
JACKSON, M. ESTELLE . . . . .	Farmington, Ga.
JACKSON, RACHEL ROSA . . . . .	Columbus, Ga.
KEELING, J. EDITH . . . . .	Gadsden, Ala.
KING, M. ETHEL . . . . .	Louisville, Ky.
KING, MYRTLE L. . . . .	Atlanta, Ga.
KING, ROSA MAE . . . . .	Nelson, Ga.
LEE, PEARL EDITH . . . . .	Cuthbert, Ga.
LEWIS, ROSETTA L. . . . .	Macon, Ga.
LONG, TOMMY L. . . . .	Atlanta, Ga.
LUSTER, ADDIE B. . . . .	Hermanville, Miss.
MAPP, ESSIE M. . . . .	Rutledge, Ga.
MARCHMAN, H. SALENA . . . . .	La Grange, Ga.
MARTIN, ALVIE L. . . . .	Harris, Ga.
MARTIN, NELLIE E. . . . .	Harris, Ga.
MCCRARY, ANNIE M. . . . .	Atlanta, Ga.
MCGHEE, LUCILE . . . . .	Augusta, Ga.
MCKENZIE, MELISSA . . . . .	Marianna, Ark.
MIDDLEBROOKS, ANNIE . . . . .	Okalona, Miss.
MILLINER, JULIA L. . . . .	Daytona, Fla.
MYRICK, HATTIE C. . . . .	Milledgeville, Ga.
NICHOLSON, WILLIE M. . . . .	Laurel, Miss.
PARKS, BESSIE E. . . . .	Newnan, Ga.
PHILLIPS, MARIAH V. . . . .	E. Rome, Ga.
PHILPOT, MAUD M. . . . .	La Grange, Ga.
PILCHER, PEARL . . . . .	Dublin, Ga.
PITTS, LEAH F. . . . .	Atlanta, Ga.
PORTER, BERTHA T. . . . .	Columbus, Ga.
PRYOR, ZARIA B. . . . .	Millen, Ga.
ROBINSON, ESSIE A. . . . .	Union, S. C.
SCARLETT, BESSIE M. . . . .	Atlanta, Ga.



---

SCOTT, DERRIEN LEE . . . . .	Augusta, Ga.
SCRUGGS, NELLIE B. . . . .	Atlanta, Ga.
SMITH, ANNIE L. . . . .	Atlanta, Ga.
TURNER, ELSA A. . . . .	Tampa, Fla.
VAUGHN, ULDENE M. . . . .	Mobile, Ala.
WALKER, WILLIE C. . . . .	Turin, Ga.
WASHINGTON, MARGUERITE E. . . . .	Birmingham, Ala.
WHITTED, NELLIE E. . . . .	Raleigh, N. C.
WRIGHT, NELLIE M. . . . .	Atlanta, Ga.
YOUNG, THERESA L. . . . .	Atlanta, Ga.

## FIRST YEAR.

ALSTON, CLARA T. . . . .	Tampa, Fla.
BOLDEN, LENORA . . . . .	Atlanta, Ga.
BROWN, LUCILE G. . . . .	High Springs, Fla.
BROWN, MAMIE . . . . .	Atlanta, Ga.
BRYANT, ELICE . . . . .	Tampa, Fla.
CROSBY, MARIE . . . . .	Gainesville, Ga.
CUNNINGHAM, RUTH . . . . .	College Park, Ga.
DICKERSON, MARION V. . . . .	Dickerson, Miss.
DIXON, LINNIE . . . . .	La Grange, Ga.
EVANS, SARAH E. . . . .	Seffner, Fla.
FRAZIER, EMMA . . . . .	West Point, Ga.
GLENN, MINNIE . . . . .	Atlanta, Ga.
GRANT, BESSIE . . . . .	La Grange, Ga.
HARRIS, MATTIE F. . . . .	Atlanta, Ga.
HARRIS, NETTIE . . . . .	Atlanta, Ga.
HENRY, M. LOUISE . . . . .	Marietta, Ga.
HOLT, ORA . . . . .	Atlanta, Ga.
JACKSON, HATTIE F. . . . .	Asheville, N. C.
LATIMER, ANNIE . . . . .	Atlanta, Ga.
LUKE, ANNIE LAURIE . . . . .	Thomson, Ga.
MARTIN, ELIZA . . . . .	Greenville, Ga.
MCCRARY, DAISY . . . . .	Crawfordville, Ga.
MILNER, ORA . . . . .	Atlanta, Ga.
NELSON, HATTIE BELLE . . . . .	Covington, Ga.
NESBIT, MILDRED . . . . .	Savannah, Ga.
RANKIN, LILLIAN M. . . . .	Yazoo City, Miss.
RAY, ADDIE E. . . . .	Hiram, Ga.
RAYNOR, ANNIE ESTELLA . . . . .	Goldsboro, N. C.
REYNOLDS, MATTIE . . . . .	Cuthbert, Ga.
RHINES, BERTHA L. . . . .	Rome, Ga.
SCROGGINS, LULA . . . . .	Atlanta, Ga.
SKINNER, SUSIE . . . . .	Atlanta, Ga.
SWANSON, IRENE . . . . .	Maywood, Ill.

---

THOMAS, MAGNOLIA I. . . . .	Woodstock, Ga.
WALKER, ERMA . . . . .	Atlanta, Ga.
WASHINGTON, DAISY . . . . .	Atlanta, Ga.
WATROUS, ELLEN . . . . .	Ft. Worth, Tex.
WEEMS, LOUISE . . . . .	Atlanta, Ga.

---

## TEACHERS PROFESSIONAL DEPARTMENT.

### SENIORS.

APPLING, LILLIE J. . . . .	Carlton, Ga.
BERRY, CINDA ELLA . . . . .	Birmingham, Ala.
EUBANKS, LILLIAN C. . . . .	Birmingham, Ala.
KELSEY, DAISY B. . . . .	Millen, Ga.
REID, LOUISE J. . . . .	Athens, Ga.
TINSLEY, MARY F. . . . .	Atlanta, Ga.
USHER, NANCY E. . . . .	Jacksonville, Fla.
WALKER, MAMIE A. . . . .	Athens, Ga.

### MIDDLE CLASS.

BERRY, SELETA S. . . . .	Athens, Ga.
BREWER, S. BEATRICE . . . . .	Atlanta, Ga.
CLARK, INEZ T. . . . .	Americus, Ga.
DENNIS, MAGGIE E. . . . .	Jacksonville, Fla.
GOLSON, WILLA . . . . .	Birmingham, Ala.
GRIGGS, M. MAGNOLIA . . . . .	Milledgeville, Ga.
HASKELL, JOSEPHINE W. . . . .	Jacksonville, Ill.
MURDEN, WILLIE SELENA . . . . .	Athens, Ga.
SHEFFIELD, MAGGIE B. . . . .	Americus, Ga.
SIMPSON, ESTHER M. . . . .	Americus, Ga.
WALKER, LAURINE . . . . .	Athens, Ga.
WILLIAMS, LUCY . . . . .	Milledgeville, Ga.

### JUNIORS.

BYRD, ETHEL MAE . . . . .	Birmingham, Ala.
CHAPPLEAR, CARRIE . . . . .	Evans, Ga.
FIELDS, ESTHER . . . . .	Jacksonville, Fla.
HOWARD, CORA BELLE . . . . .	Livingston, Ala.
MARTIN, BESSIE M. . . . .	Thomasville, Ga.
MARTIN, MAMIE D. . . . .	Thomasville, Ga.
NEIL, JULIA E. . . . .	Jacksonville, Fla.
ROBERTS, ELLA D. . . . .	Leslie, Ga.
SMEDLEY, A. BEATRICE . . . . .	Selma, Ala.
USHER, MARTHA W. . . . .	Jacksonville, Fla.
WRIGHT, EDNA H. . . . .	Oklahoma City, Okla.

## NORMAL PRACTICE SCHOOL.

## EIGHTH GRADE.

ANDERSON, ELSIE . . . . .	Battle Hill, Ga.
AVERYTT, BETTIE B. . . . .	Shelby, Ala.
BAUGH, PEARL . . . . .	Atlanta, Ga.
BENTLEY, EDDYLENE . . . . .	Atlanta, Ga.
BENTON, ARAVIA . . . . .	Wildwood, Fla.
BLACKWELL, GERALDINE . . . . .	Atlanta, Ga.
BUSH, ESSIE . . . . .	Augusta, Ga.
BUTLER, IRENE . . . . .	Atlanta, Ga.
CARR, L. SELICA . . . . .	Conyers, Ga.
DIX, IRENE S. . . . .	Grantville, Ga.
FRAZIER, ALICE L. . . . .	Auburn, Ala.
FREDERICK, LULA . . . . .	Atlanta, Ga.
GARRETT, WILLIE G. . . . .	Lumpkin, Ga.
GLASS, ROXANNA . . . . .	Atlanta, Ga.
GLENN, ANNIE B. . . . .	Jacksonville, Fla.
HARRIS, CLARE . . . . .	Atlanta, Ga.
HARRIS, LAURA . . . . .	Attala, Ala.
HOLLINGSWORTH, BEADIE . . . . .	Roopville, Ala.
HOWARD, VIRGINIA . . . . .	Atlanta, Ga.
ISON, MAUD . . . . .	Griffin, Ga.
JACKSON, IVA . . . . .	Atlanta, Ga.
JENKINS, AMANDA . . . . .	Talladega, Ala.
JONES, LONNIE E. . . . .	Hartwell, Ga.
KIGH, THELMA W. . . . .	Birmingham, Ala.
LEMON, A. RUTH . . . . .	McDonough, Ga.
LIPSCOMB, EFFIE . . . . .	Attala, Ala.
MCCLENDON, ESSIE . . . . .	Washington, Ga.
MCGHEE, ETHEL E. . . . .	Greenville, Ga.
MCGOWAN, LELA . . . . .	Atlanta, Ga.
MITCHELL, CHRYSANTHEMUM . . . . .	Hot Springs, Ark.
MULLIN, ROSALIND C. . . . .	Norwood, Ga.
NEAL, MARY L. . . . .	Farmington, Ga.
NEWMAN, MARY BELL . . . . .	Jacksonville, Fla.
PEPPERS, INEZ A. . . . .	W. Palm Beach, Fla.
POPE, HATTIE B. . . . .	Chicago, Ill.
RICHARDSON, LOTTIE . . . . .	Smyrna, Ga.
SAPPINGTON, MATTIE C. . . . .	Conyers, Ga.
STEELE, CELESTE C. . . . .	Memphis, Tenn.
THOMAS, LUCILE I. . . . .	Mobile, Ala.
THOMAS, MILLIE . . . . .	Atlanta, Ga.
THOMAS, MYRTLE E. . . . .	Mobile, Ala.



WALKER, LILLIAN . . . . .	Turin, Ga.
WARD, ESTELLE . . . . .	Milner, Ga.
WARDLAW, ROSA . . . . .	Atlanta, Ga.
WINDHAM, GENEVA C. . . . .	Birmingham, Ala.
WOODWARD, BESSIE . . . . .	Atlanta, Ga.
WYMAN, HATTIE . . . . .	Atlanta, Ga.

## SEVENTH GRADE.

BANKS, MATTIE F. . . . .	Red Oak, Ga.
BELL, HAZEL R. . . . .	Vicksburg, Miss.
BLACK, EUNICE B. . . . .	Millen, Ga.
BLACK, INEZ K. . . . .	McDonough, Ga.
BOWMAN, OLLIE . . . . .	Atlanta, Ga.
BRATCHER, MAMIE L. . . . .	Decatur, Ga.
BRAZELTON, ALLIE MAY . . . . .	Philadelphia, Tenn.
BROOKS, MATILDA . . . . .	Meridian, Miss.
BROWN, MARY E. . . . .	Atlanta, Ga.
BULLOCK, ANNIE L. . . . .	McRae, Ga.
CALLAWAY, LETITIA . . . . .	Vernon, Texas
COLLIE, ALICE E. . . . .	West Palm Beach, Fla.
DARNELL, NANCY L. . . . .	Marietta, Ga.
DAVIS, KATIE . . . . .	Atlanta, Ga.
DEMONS, LIZZIE . . . . .	Atlanta, Ga.
FALLENS, HESSIE . . . . .	Pomona, Ga.
FINCH, LOTTIE . . . . .	Atlanta, Ga.
FLOYD, PEARL M. . . . .	Emerson, Ga.
FOSTER, JOHNNIE T. . . . .	Eatonton, Ga.
FULLER, SAMMIE . . . . .	Anderson, S. C.
GATES, ETHEL . . . . .	Atlanta, Ga.
GLENN, ROSA BELL . . . . .	Atlanta, Ga.
HALL, MARY LEE . . . . .	Waycross, Ga.
HART, LILLIE . . . . .	Vallarica, Ga.
HICKS, SYLVIA C. . . . .	Tampa, Fla.
HINES, BESSIE M. . . . .	Atlanta, Ga.
JETTER, ORA L. . . . .	Atlanta, Ga.
JOHNSON, CORENE L. . . . .	Athens, Ga.
JONES, ALZORA P. . . . .	Augusta, Ga.
LATIMER, MAGNOLIA . . . . .	Atlanta, Ga.
MANCE, DAISY . . . . .	Atlanta, Ga.
MCCLENDON, ESTELLE F. . . . .	Washington, Ga.
MCCREE, RUTH . . . . .	College Park, Ga.
MILLER, LILLIAN . . . . .	Atlanta, Ga.
MURTISHAW, MAGGIE E. . . . .	Spartanburg, S. C.
PRATT, IZORA E. . . . .	Atlanta, Ga.
PRATT, JULIA . . . . .	Atlanta, Ga.

ROBINSON, DOROTHY R.	Philadelphia, Pa.
RUTLEDGE, GILLIE A.	La Grange, Ga.
SMITH, REBIE	Atlanta, Ga.
STEED, GENIE	College Park, Ga.
SWAIN, EFFIE D.	Barnett, Ga.
THOMPSON, LOUVENIA	Cherokee, Ala.
WALDEN, BEULAH M.	Faircloth, Ga.
WARD, SALLIE	La Grange, Ga.
WELDON, EMMA M.	Edgewood, Ga.
WILLIS, MARTHA	Atlanta, Ga.
WILLIS, MARY	Atlanta, Ga.
WOODS, DAISY M.	Marion, Ala.
WRIGHT, CHRISTINE	Leeds, Ala.

## SIXTH GRADE.

AMOS, LENORA	Franklin, Ga.
BADGER, HATTIE	Atlanta, Ga.
BANKHEAD, JULIA	Atlanta, Ga.
BARNES, MACEO	Atlanta, Ga.
BROWN, LEMA	Atlanta, Ga.
BROWN, WILMA A.	Duluth, Ga.
CARLISLE, LEVATOR	West Point, Ga.
CHAPMAN, PEARL	Robinson, Ga.
CHUNN, RUBY	East Point, Ga.
CRANE, LILLIE B.	Los Angeles, Cal.
DANIELS, KATE L.	Albany, Ga.
DICKERSON, ADALINE	Atlanta, Ga.
DUNLAP, ROBERTA	Atlanta, Ga.
EARLY, CANDACE (MRS.)	Atlanta, Ga.
FARLEY, OLLIE BELL	College Park, Ga.
GARDNER, LUETTA	Atlanta, Ga.
GIBSON, MAUD L.	Columbia, S. C.
HAMILTON, EMMIE	Atlanta, Ga.
HIGHT, ANNIE MAY	Atlanta, Ga.
HILLSMAN, BETTIE	Atlanta, Ga.
HOGG, LENA H.	Atlanta, Ga.
HOLMES, ESTELLE	Louisville, Ky.
HOUSTON, LETHIA	Hapeville, Ga.
JACKSON, REBECCA S.	Decatur, Ga.
JONES, HATTIE	Atlanta, Ga.
JONES, MARGARET LEOLA	Atlanta, Ga.
JONES, OPHELIA	Atlanta, Ga.
JONES, VIRGINIA	Atlanta, Ga.
JOYCE, IRENE	Statesboro, Ga.
LAMAR, LOVEY LEE	Battle Hill, Ga.

LARK, VICTORIA . . . . .	Atlanta, Ga.
MACHORE, FELICIA . . . . .	Bocas del Toro, Panama.
MANESE, LYDIA B. . . . .	Brooksville, Miss.
MCDANIEL, MARY . . . . .	Doraville, Ga.
MIFFLIN, GEORGIA A. . . . .	Thunderbolt, Ga.
MITCHELL, QUEENIE . . . . .	East Point, Ga.
MOORE, ROSA MAY . . . . .	Atlanta, Ga.
NORRIS, RACHEL . . . . .	Atlanta, Ga.
PERCELL, IRENE . . . . .	Covington, Ga.
RAWLS, ELEANOR . . . . .	Brooklyn, N, Y.
RAY, BURMA B. . . . .	Hiram, Ga.
RUCKER, PEARL . . . . .	College Park, Ga.
SELLERS, AMY . . . . .	Baxley, Ga.
SHEFFIELD, CHRISTINE . . . . .	Newnan, Ga.
SHROPSHIRE, CLEOPHAS . . . . .	Fairburn, Ga.
SLAUGHTER, JUANITA E. . . . .	Atlanta, Ga.
SMITH, BERTHA . . . . .	Atlanta, Ga.
STIDWELL, CARRIE M. . . . .	Atlanta, Ga.
SUTTON, HATTIE . . . . .	Atlanta, Ga.
TIDWELL, JENNIE . . . . .	Howell Station, Ga.
UPSHAW, LUELLA . . . . .	Red Oak, Ga.
WADE, GERTRUDE . . . . .	Atlanta, Ga.
WEAVER, NELLIE . . . . .	Atlanta, Ga.
WILLIAMS, LETTIE . . . . .	Atlanta, Ga.
WINSTON, FLORENCE C. . . . .	West Point, Ga.
WRIGHT, BERTHA . . . . .	Atlanta, Ga.
YORK, ANNIE . . . . .	Experiment, Ga.

## FIFTH GRADE.

ADAMS, GORDIE . . . . .	Watkinsville, Ga.
ANDREWS, LEONA . . . . .	Lincolnton, Ga.
AUSTIN, ANNIE LOUISE . . . . .	Atlanta, Ga.
AUSTIN, HAZEL MAY . . . . .	Atlanta, Ga.
CANNON, GERTRUDE . . . . .	Atlanta, Ga.
CONYERS, MARY . . . . .	Monroe, Ga.
CUNNINGHAM, MARIAN . . . . .	Atlanta, Ga.
DAVIS, ELLEN I. . . . .	Talladega, Ala.
DAVIS, HATTIE . . . . .	Atlanta, Ga.
DAVIS, OLIVE . . . . .	Atlanta, Ga.
DUNN, EDNA (MRS.) . . . . .	Atlanta, Ga.
EDGE, LOUISE . . . . .	Atlanta, Ga.
EDGE, MABEL . . . . .	Atlanta, Ga.
FORD, DANA ARDELLE . . . . .	Atlanta, Ga.
FRANCIS, IRENE . . . . .	Mt. Pleasant, Tenn.
GATES, VASHTI M. . . . .	Atlanta, Ga.



---

GIBSON, KATIE A. . . . .	Bainbridge, Ga.
GLASS, FLOSSIE . . . . .	McDonough, Ga.
GOODWYN, PEARL . . . . .	Wadley, Ga.
GRANT, OLETHIA . . . . .	Atlanta, Ga.
GRESHAM, MATTIE . . . . .	Atlanta, Ga.
HARRIS, NELLIE G. . . . .	Columbus, Ga.
HART, JIMMIE . . . . .	Villa Rica, Ga.
HINDSMAN, CORRIE LEE . . . . .	Villa Rica, Ga.
JACKSON, MOLLIE P. . . . .	La Grange, Ga.
JENNINGS, JOSIE LEE . . . . .	Vidalia, Ga.
KILPATRICK, LIZZIE (MRS.) . . . . .	Atlanta, Ga.
LAMAR, MARIE . . . . .	Milner, Ga.
LESLIE, MARTHA L. . . . .	Atlanta, Ga.
LITTLE, JERUSHA . . . . .	Atlanta, Ga.
LOVETT, MATTIE MAY . . . . .	Atlanta, Ga.
MOORE, MAMIE . . . . .	Atlanta, Ga.
PARKER, LOUISE . . . . .	Atlanta, Ga.
PERKINS, LOUISE . . . . .	Atlanta, Ga.
PHILIPS, DURA . . . . .	Luthersville, Ga.
PRIESTLY, LILLIE . . . . .	Atlanta, Ga.
PRINGLE, HATTIE MAE . . . . .	Vidalia, Ga.
PUSEY, ALMA . . . . .	San Andras Id., Panama.
PUSEY, JENNIE . . . . .	Cartagena, Col'bia, S. A.
ROSS, MATTIE A. . . . .	West Point, Ga.
SALMON, ELLEN . . . . .	Gabbettville, Ga.
SAMUELS, ELIZABETH . . . . .	Thomasville, Ga.
SAUNDERS, LUELLA . . . . .	DeLand, Fla.
SCOTT, BEATRICE . . . . .	Harrison, Ga.
SHOWERS, ARABELLA . . . . .	Atlanta, Ga.
SMITH, MARGARET . . . . .	Atlanta, Ga.
SUTTON, ANNETTE O. . . . .	Atlanta, Ga.
SUTTON, DAISY I. . . . .	Atlanta, Ga.
SUTTON, PAULINE . . . . .	Stockbridge, Ga.
THIGPENN, LUCILE B. . . . .	Jacksonville, Fla.
THOMAS, KATIE L. . . . .	Athens, Ga.
TOLBERT, LOIS . . . . .	Atlanta, Ga.
WADE, ELLA B. . . . .	Atlanta, Ga.
WALKER, JIMMIE . . . . .	Atlanta, Ga.
WASHINGTON, LAURA M. . . . .	Tuskegee, Ala.
WARREN, CLEMONTZ . . . . .	Atlanta, Ga.
WILKERSON, JULIA I. . . . .	Atlanta, Ga.
WILLIAMS, LAURA I. . . . .	Atlanta, Ga.
WILLIS, BESSIE . . . . .	Atlanta, Ga.
WILSON, ESTHER . . . . .	Atlanta, Ga.

WINKLEY, DELLA . . . . . Atlanta, Ga.  
 WRIGHT, SOPHIA PACKARD . . . . . Statesboro, Ga.

## FOURTH GRADE.

ALEXANDER, TEMPIE . . . . . Atlanta, Ga.  
 BARNES, LILLIE MAE . . . . . Atlanta, Ga.  
 BUTLER, ETHEL . . . . . Atlanta, Ga.  
 CALLAWAY, ETHEL . . . . . Vernon, Texas.  
 CRAWFORD, WILLIE MAY . . . . . Atlanta, Ga.  
 CUNNINGHAM, DORA . . . . . Atlanta, Ga.  
 DATCHER, CHRISTIANITA . . . . . La Grange, Ga.  
 DAVIS, ELLEN . . . . . Atlanta, Ga.  
 DODSON, EVA . . . . . Atlanta, Ga.  
 DUKES, LOIS MAY . . . . . Bremen, Ga.  
 DURDEN, FANNIE MAE . . . . . Atlanta, Ga.  
 EARLY, DAISY . . . . . Atlanta, Ga.  
 FEWS, ETHEL M. . . . . Atlanta, Ga.  
 FREEMAN, PEARLIE . . . . . Atlanta, Ga.  
 GLANTON, HELEN T. . . . . Atlanta, Ga.  
 GRAFTON, ANNIE LAURA . . . . . Atlanta, Ga.  
 HAMPTON, LAVANNA . . . . . Augusta, Ga.  
 HARDAWAY, LAURA . . . . . Atlanta, Ga.  
 HARDEN, ANNIE . . . . . Woodstock, Ga.  
 HARRIS, CORA . . . . . Atlanta, Ga.  
 HOPPINS, ROSA . . . . . Duluth, Ga.  
 HUGHLEY, IRENE . . . . . West Point, Ga.  
 JACKSON, ALICE . . . . . Union City, Ga.  
 KING, BESSIE E. . . . . Atlanta, Ga.  
 LATIMER, DOLLIE . . . . . Atlanta, Ga.  
 LAWS, IRENE . . . . . Locust Grove, Ga.  
 LOWE, BIRDIE . . . . . Atlanta, Ga.  
 MCCOY, IRA MABEL . . . . . Jacksonville, Fla.  
 McDONALD, CECIL . . . . . Macon, Ga.  
 MILLS, MARY E. . . . . Duluth, Ga.  
 PARKER, LOUISE . . . . . Atlanta, Ga.  
 PITTMAN, CARA C. . . . . Tampa, Fla.  
 PRIESTLY, ESTELLE . . . . . Atlanta, Ga.  
 REID, MABEL . . . . . Atlanta, Ga.  
 ROSS, MARY . . . . . Atlanta, Ga.  
 RUTLEDGE, MYRTLE . . . . . La Grange, Ga.  
 SAMPSON, VIRGINIA . . . . . Atlanta, Ga.  
 SIMS, CARRIE . . . . . East Point, Ga.  
 SMITH, VASHTI . . . . . Atlanta, Ga.  
 SPEER, IRENE . . . . . McDonough, Ga.  
 STRICKLAND, ROSA LEE . . . . . Atlanta, Ga.

---

TURNER, DAISY . . . . .	Atlanta, Ga.
WARD, HATTIE . . . . .	Atlanta, Ga.
WARE, GILDON . . . . .	Fairburn, Ga.
WARE, MAY HULDA . . . . .	Atlanta, Ga.
WATERS, ANNETTA . . . . .	Duluth, Ga.
WILKERSON, CLARA . . . . .	Atlanta, Ga.
WILLIAMS, ANNIE BELLE . . . . .	Atlanta, Ga.
WILLIAMS, RENA . . . . .	Atlanta, Ga.
WOODS, LUTENSIE . . . . .	Bogart, Ga.
WRIGHT, MARY M. . . . .	Atlanta, Ga.

## THIRD GRADE.

AUSTIN, LOIS . . . . .	Atlanta, Ga.
AUSTIN, PINKIE . . . . .	Atlanta, Ga.
BATTLES, LUCILE . . . . .	Atlanta, Ga.
BROOKS, FRANCES L. . . . .	Atlanta, Ga.
BURCH, WILLIE SUE . . . . .	Atlanta, Ga.
COBB, ELLA . . . . .	Atlanta, Ga.
COLES, ELEANOR . . . . .	Atlanta, Ga.
DAVIS, GLADYS . . . . .	Atlanta, Ga.
DAVIS, MARY . . . . .	Atlanta, Ga.
DUMAS, LYDIA G. . . . .	Atlanta, Ga.
DUNLAP, REBECCA . . . . .	Atlanta, Ga.
EDGE, LILLIE MAY . . . . .	Atlanta, Ga.
EDWARDS, LULA MAE . . . . .	Atlanta, Ga.
EMORY, DAISY BELLE . . . . .	Atlanta, Ga.
GATHERS, MAMIE . . . . .	Atlanta, Ga.
GLADMAN, EVA . . . . .	Atlanta, Ga.
GRESHAM, LULA MAE . . . . .	Atlanta, Ga.
HIXON, VIOLA . . . . .	Waverley Hall, Ga.
HOOD, ELNORA . . . . .	Atlanta, Ga.
KELSEY, PEARLIE . . . . .	Dunnelton, Fla.
LANCASTER, SALLIE . . . . .	West Point, Ga.
MARTIN, VESTA BELL . . . . .	Atlanta, Ga.
MURRAY, BESSIE MAE . . . . .	Atlanta, Ga.
PERRY, LEONA . . . . .	Atlanta, Ga.
PLUMMER, WILLIE MAE . . . . .	Atlanta, Ga.
SMITH, CARLOTTA . . . . .	Atlanta, Ga.
SMITH, JULIA . . . . .	Atlanta, Ga.
STEVENS, SARAH . . . . .	Atlanta, Ga.
STILES, CORNELIA . . . . .	Atlanta, Ga.
SWANN, WILLIE MAE . . . . .	Atlanta, Ga.
TAYLOR, GLADYS . . . . .	Atlanta, Ga.
TRUITT, OSSINIE . . . . .	Atlanta, Ga.
WALKER, BETTIE . . . . .	Atlanta, Ga.



---

WILKERSON, MATILDA . . . . .	Atlanta, Ga.
WILLIAMS, DORA . . . . .	Atlanta, Ga.
WINN, LEE CLARA . . . . .	Fort Valley, Ga.

## SECOND GRADE.

BADGER, RUBY . . . . .	Atlanta, Ga.
BECK, RUTH . . . . .	Atlanta, Ga.
BROCK, MATTIE MAE . . . . .	Atlanta, Ga.
BYRON, LOUISE . . . . .	Atlanta, Ga.
COOPER, PEARL . . . . .	Atlanta, Ga.
COOPER, VENIE . . . . .	Atlanta, Ga.
DAVIS, JEANNETTE . . . . .	Atlanta, Ga.
DUMAS, INEZ . . . . .	Atlanta, Ga.
DURDEN, ERNESTINE . . . . .	Atlanta, Ga.
ECHOLS, MOZELLE . . . . .	Atlanta, Ga.
GREEN, WILLIE MAE . . . . .	Atlanta, Ga.
HOLLAND, ALTHONIA . . . . .	Atlanta, Ga.
JOHNSON, LULA . . . . .	Atlanta, Ga.
PALMER, MABELLE . . . . .	Atlanta, Ga.
PALMER, MADELE . . . . .	Atlanta, Ga.
PIERCE, MODESTINE . . . . .	Atlanta, Ga.
SUTTON, MAGGIE MAE . . . . .	Atlanta, Ga.
THURMAN, LILLIE MAE . . . . .	Atlanta, Ga.
TURNER, BELLE WILLIS . . . . .	Atlanta, Ga.
WARE, LUCILE . . . . .	Atlanta, Ga.

## FIRST GRADE.

BAILEY, EULA . . . . .	Atlanta, Ga.
BATTLES, EDNA . . . . .	Atlanta, Ga.
BENTLEY, MAMIE . . . . .	Atlanta, Ga.
CARITHERS, CLATIE LEE . . . . .	Atlanta, Ga.
CHAMBLISS, MAMIE LEE . . . . .	Atlanta, Ga.
CHEAVES, MARJESTA . . . . .	Atlanta, Ga.
DAVIS, ELLA . . . . .	Atlanta, Ga.
DUNN, WILLIE MAY . . . . .	Atlanta, Ga.
EBERHARDT, BESSIE . . . . .	Atlanta, Ga.
FERNANDO, DAISY . . . . .	Atlanta, Ga.
FERNANDO, JUANITA . . . . .	Atlanta, Ga.
FRYE, MATTIE . . . . .	Atlanta, Ga.
GREEN, EVELYN . . . . .	Atlanta, Ga.
GRESHAM, SUSIE . . . . .	Atlanta, Ga.
JACKSON, ELIZABETH . . . . .	Atlanta, Ga.
JOHNSON, VICTORIA . . . . .	Atlanta, Ga.
LITTLEJOHN, GEORGIA . . . . .	Howell Station, Ga.
LOCKHART, AMELIA . . . . .	Atlanta, Ga.
MARION, MARY . . . . .	Atlanta, Ga.

---

MOORE, WILLIE LEE . . . . .	Atlanta, Ga.
MITCHELL, MARIE . . . . .	Atlanta, Ga.
MITCHELL, ROSA . . . . .	Atlanta, Ga.
PITTS, MATTIE LOU . . . . .	Atlanta, Ga.
PRIESTLEY, PARTHENA . . . . .	Atlanta, Ga.
REED, MONICA . . . . .	Atlanta, Ga.
SIMMONS, EMMA LEE . . . . .	Allanta, Ga.
TURNER, LOUISE . . . . .	Atlanta, Ga.
WINFREY, RUTH . . . . .	Atlanta, Ga.
WINKLEY, LILLIE BELLE . . . . .	Bolton, Ga.
WOODS, SARAH MAE . . . . .	Atlanta, Ga.

---

### NIGHT SCHOOL ONLY.

ARNOLD, OCTAVIA . . . . .	Newnan, Ga.
BATTLE, MARY L. . . . .	Atlanta, Ga.
COTTON, MINNIE PAULINE . . . . .	Brewton, Ga.
DUDLEY, ANGELINE . . . . .	Perry, Ga.
DUNN, MARY L. . . . .	Auburn, Ala.
GIBSON, LOUISE . . . . .	Milledgeville, Ga.
GREENE, JENNIE . . . . .	Gadsden, Ala.
HUGUELEY, ELZATIE . . . . .	West Point, Ga.
MOON, ESTELLA A.L. . . . .	Winder, Ga.
PEARSON, EFFIE . . . . .	Anniston, Ala.
THORNTON, JESSIE M. . . . .	Hogansville, Ga.
WARDLAW, INEZ . . . . .	Williamston, S.C.
WARE, VIVIAN . . . . .	Fairburn, Ga.
WILSON, BEULAH . . . . .	Warrenton, Ga.

---

### DRESSMAKING.

#### SENIORS.

AVERY, AMANDA J. . . . .	Waverley, Ala.
GLENN, HATTIE W. . . . .	McDonough, Ga.
GORDON, OLIVE G. . . . .	Forsyth, Ga.
HARRIS, NETTIE . . . . .	Atlanta, Ga.
HODGES, TOMMIE R. . . . .	Oklahoma City, Okla.
JOHNSON, ANNIE BELLE . . . . .	Atlanta, Ga.
KEATON, RHUNETTE . . . . .	Bainbridge, Ga.
LATIMER, MARY E. . . . .	Sparta, Ga.
MARTIN, ORENA E. . . . .	Louisville, Ky.
MIDDLEBROOKS, ALMA E. . . . .	Griffin, Ga.

---

MORGAN, GERTRUDE E. . . . .	Columbus, Ga.
RIDLEY, ADA . . . . .	Atlanta, Ga.
WATKINS, REBECCA . . . . .	Dublin, Ga.
WILLIAMS, JESSIE . . . . .	Columbus, Ga.
WILSON, MINNIE LEE . . . . .	Cristobal, C. Z.
WOODWARD, LILLA . . . . .	Atlanta, Ga.

## JUNIORS.

ANDERSON, DELLA . . . . .	Atlanta, Ga.
BRAWNER, MARY . . . . .	Atlanta, Ga.
BRIDGES, MARY F. . . . .	So. Macon, Ga.
BOYKIN, HATTIE MAE . . . . .	Antioch, Ga.
BROWN, GERTRUDE . . . . .	Brooklyn, N. Y.
CLACK, MOLLIE . . . . .	Atlanta, Ga.
CLAYTON, MATTIE L. . . . .	Camilla, Ga.
CLAYTON, VERDELL . . . . .	Camilla, Ga.
COLLUM, MARTHA . . . . .	Bainbridge, Ga.
FORREST, LUVENIA . . . . .	Palatka, Fla.
GETER, MILDRED D. . . . .	Augusta, Ga.
GRIFFIN, DAISY M. . . . .	Greenwood, S. C.
HUDSON, AURELIA LOUISE . . . . .	Valdosta, Ga.
HUDSON, SUSIE . . . . .	West Point, Ga.
PERSON, MARIE . . . . .	Atlanta, Ga.
SMITH, ALICE V. (MRS.) . . . . .	Atlanta, Ga.
TARVER, WILLIE L. . . . .	Quitman, Ga.
TOMPKINS, MARY LOU . . . . .	Vidalia, Ga.
WALDEN, DEZZIE M. . . . .	Fairecloth, Ga.
WASHINGTON, LUNETTE C. . . . .	Union, S. C.

---

NURSE TRAINING.

## SENIORS.

DAVIS, CLEOPATRA . . . . .	Columbus, Ga.
DOUGANS, OLIVETTE . . . . .	Atlanta, Ga.
HUNTER, CARRIE G. . . . .	Athens, Ga.
ORR, AMIE . . . . .	Toccoa, Ga.
WILLIAMS, NELLIE B. . . . .	Atlanta, Ga.

## JUNIORS.

JOHNSTON, EVA E. . . . .	Higgston, Ala.
MONTGOMERY, ELLA . . . . .	Rome, Ga.
PAYNE, SAVANNAH . . . . .	Calhoun, Ala.
PETERS, ERLYNNE G. . . . .	Girard, Ala.
STARK, JOSIE L. . . . .	Atlanta, Ga.
WILSON, BERTHA M. . . . .	Birmingham, Ala.



## INTERMEDIATE CLASS.

BLOUNT, GERTRUDE S. . . . .	Forsyth, Ga.
BROWN, SUSIE . . . . .	La Grange, Ga.
ETCHERSON, DAISY . . . . .	So. Atlanta, Ga.
HENDERSON, LERA M. . . . .	Columbus, Ga.
HINTON, MISSOURI . . . . .	Atlanta, Ga.
SCOTT, ANNIE MAE . . . . .	Milledgeville, Ga.
WHITEHURST, PAULINE A. . . . .	Live Oak, Fla.

## PROBATIONERS.

HENDRIX, ALLINE . . . . .	Sparks, Ga.
SULLIVAN, MINNIE C. . . . .	Atlanta, Ga.
THIRGOOD, LUCILE E. . . . .	Atlanta, Ga.

## OFFICERS OF THE ALUMNÆ ASSOCIATION.

MISS CLARA A. HOWARD, . . . . .	President.
MISS FANNIE L. SHOWERS, . . . . .	First Vice President.
MRS. DR. R. S. DOUTHARD, . . . . .	Second Vice President.
MISS B. E. BATTLE, . . . . .	Third Vice President.
MISS HELEN A. McALPINE, . . . . .	Treasurer.
MISS FLORA E. BEDINGFIELD, . . . . .	Recording Secretary.
MISS PENELOPE BURWELL, . . . . .	Corresponding Secretary.
MISS LENA JONES, . . . . .	Assistant Cor. Sec'y.
MRS. HATTIE E. HARRIS, . . . . .	Historian.
MRS. HATTIE L. G. WATSON, . . . . .	Necrologist.

## GRADUATES.

## COLLEGE DEPARTMENT.

1901.

GRANDERSON, JANE ANNA, Died, 1905.

WHITE, CLAUDIA T., (MRS. W. K. HARRELD,) . Atlanta, Ga.

1903.

BAKER, ELLA P., Office Work, . . . . . Atlanta, Ga.

BROWN, DAISY E., M. D., (MRS. JAS. T. BONNER,) . . Mt. Sterling, Ky.

COHRON, MANIE W., (MRS. R. H. CARTER,) . . . Newnan, Ga.

COHRON, VERTA, . . . . . St. Joseph, Mo. .

1906.

GRANDERSON, MAYME E., (MRS. B. B. DANSBY,) . . . Jackson, Miss.

1907.

RUTHERFORD, HATTIE L. G., (MRS. JNO. B. WATSON,) Atlanta, Ga.

1908.

DAVIS, ANNA C., (MRS. M. McWHORTER,) . . . Newnan, Ga.  
 NORRIS, BLANCHE F., (MRS. A. R. RAIFORD,)\* . . . Washington, Ga.  
 WRIGHT, IDA B., Teaching, . . . . . Okla. City, Okla.

1909.

BRYANT, EMMA O., Teaching, . . . . . Lawrenceville, Va.  
 GROSS, JESSIE MAY, (MRS. HARRIS,)\* . . . . . Houston, Texas.

1910.

STRONG, MAMIE L., Teaching, . . . . . Jackson, Miss.

1912.

FLOYD, CLAUDIA L., (MRS. T. S. SAINÉ,) . . . . . Newnan, Ga.  
 WEEMS, CAMILLA, Fulton Co. Ind. Superv'r, . Spelman Sem'y.

1913.

HUDSON, E. LEOLA, Science Student, . . . . . Brooklyn, N. Y.  
 JUNIUS, JOSEPHINE A., Teaching, . . . . . Jacksonville, Fla.  
 MATTHEWS, AZLENE E., Teaching, . . . . . Hartwell, Ga.

1914.

BARLOW, LEILA MAE, Teaching, . . . . . Sumter, S. C.  
 CHEEK, RUTH B. WEST, Teaching, . . . . . Fitzgerald, Ga.  
 GARDNER, ANNA ETHELYN, Teaching, . . . . . Tuscumbia, Ala.  
 MASON, J. FANNIE, Teaching, . . . . . Little Rock, Ark.  
 MOORE, BEATRICE E., Teaching, . . . . . Sandersville, Ga.

## MISSIONARY TRAINING DEPARTMENT.

[Christian Workers Department from 1901 to 1910.]

1893.

BURTON, IDA M., (MRS. G. W. JONES,) . . . . . Augusta, Ga.  
 DE LAMOTTA, MRS. EMMA S., (MRS. A. DE LAMOTTA,) † Died, 1903.  
 KING, EMMA B., (MRS. F. L. JONES,) \*† . . . . . Memphis, Tenn.  
 MADDOX, VICTORIA W., (MRS. F. M. SIMMONS,)\*† . . . . . Washington, Ga.  
 OSBORNE, MARY A., . . . . .  
 SMITH, MRS. ADELINÉ J., (MRS. WILLIS SMITH,) . . . . . Died, 1910.  
 WHITE, HATTIE M., (MRS. G. W. HILL,) . . . . . Died, 1902.

1894.

BOOTHE, BELLE O., (MRS. G. W. SCOTT,) \* . . . . Pratt City, Ala.  
 GILLIAM, ALICE E., (MRS. B. W. MOBLEY,)\* . . . . . Gainesville, Ala.

\* Teaching, † Widow, ‡ Elective Course.

1895.

CLARK, LENA F., (MRS. C. L. WHITMAN,) . . . London, Eng.  
 TAYLOR, EMMA V., (MRS. F. G. WARNICK,) . . . . .  
 YERBY, MRS. CLEMENTINA, Died, 1901.

1896.

DE LANY, EMMA B., Mission-work, . . . . . Liberia, Africa.

1897.

FITZGILES, ANNIE W., (MRS. J. A. MANKER,) . . . Live Oak, Fla.  
 REED, MRS. EMMA J., (MRS. CARR,) . . . . . Died, 1906.  
 WHITEHURST, SENTA V., Teaching, . . . . . Gilmer, Tex.

1899.

MASSENGALE, MRS. MINERVA, (MRS. Z. D. STUCKEY,) . Atlanta, Ga.

1900.

PIERCE, CORA L., (MRS. J. H. LASTER,)<sup>†</sup> . . . Atlanta, Ga.

1902.

COOK, LILLIAN L., Died, 1907.  
 WALKER, CHARLOTTE A., . . . . . Windsor, Ont.  
 WILLIAMSON, MRS. IDA L., Died, 1913.

1903.

WILLIAMS, MRS. MATTIE P., (MRS. J. S. GRIFFIE,) . . Indianapolis, Ind.

1904.

BOYD, DOROTHY J., (MRS. JOHN BROWN,) . . . . .  
 DAVIS, MRS. PEARL M., Teaching, . . . . . Paris, Tex.

1906.

BUCHANAN, HANNAH E., Teaching, . . . . . Atlanta, Ga.  
 MATHIS, MRS. EZELLA, (MRS. W. M. CARTER,) . . Chicago, Ill.  
 MERCHANT, MRS. LOIS A., . . . . .

---

## TEACHERS PROFESSIONAL DEPARTMENT.

1894.

GORDON, MARY M., (MRS. JOHN A. SCOTT,) . . . Riverside, Cal.  
 JENKINS, SARAH B., Teaching, . . . . . Augusta, Ga.  
 WILLIAMS, EVELYN M., (MRS. RANSOM BINYARD,) . Died, 1906.  
 WINGFIELD, FANNIE S., (MRS. E. T. MARTIN,) . . . Chicago, Ill.

1895.

COOPER, MARTHA LEE, (MRS. F. R. MOYE,)\* . . . Dawson, Ga.  
 WASHINGTON, LULA E., Teaching, . . . . . La Grange, Ga.

1896.

HOWELL, HANNAH A., (MRS. M. W. REDDICK,)\* . . Americus, Ga.  
 RAMSEY, VIRGINIA E. N., (MRS. GEO. CHEATHAM,) . . El Paso, Texas.  
 WILLIAMS, MARTHA A., Died, 1900.



1897.

- JACKSON, ADA F., (MRS. S. C. GORDON,) . . . Died, 1910.  
 JOHNSON, WILLMENIA, Teaching, . . . . . De Land, Fla.  
 REESE, MAGGIE D., (MRS. BEAL ELLIOTT,) . . . . .  
 ROUNTREE, M. MAGGIE, Teaching, . . . . . Grovania, Ga.

1898.

- BAKER, ELLA PAULINA, Office Work, . . . . . Atlanta, Ga.  
 BROOKINS, MATTIE J., (MRS. C. S. JOHNSON,)\* . . . Arkan's City, Ark.  
 CARSWELL, IDA B., (MRS. T. J. WILSON,) . . . . Meridian, Miss.  
 GLOVER, BESSIE A., Died, 1906.  
 MORRIS, ADLENA, (MRS. W. A. SINGFIELD,)\* . Little Rock, Ark.  
 NIXON, OCTAVIA L., (MRS. GEORGE GREEN,)\* . . Macon Lake, Ark.  
 PAXTON, ALICE M., Business Student, . . . . Oberlin, O.

1900.

- ADAMS, SALLIE L. D., (MRS. WILLIAM MOSELEY,)\* . Aiken, S. C.  
 COLES, EVANGELINE, Teaching, . . . . . Atlanta, Ga.  
 LANG, ELIZABETH MAY, Died, 1901.  
 LEWIS, LILLIE L., (MRS. J. E. BROWN,)\* . . . Americus, Ga.  
 ROGERS, M. MAGGIE, (MRS. GRIFFIN HOWARD,)\* . Morehouse Coll.  
 WALKER, MAGGIE E., . . . . .  
 WALKER, MRS. MARY E., Teaching, . . . . . La Grange, Ga.

1901.

- ARMSTRONG, M. LAVONIA, (MRS. NEWLAN R. HARRIS,) Shellman, Ga.  
 HOUSER, TRUDIE M., (MRS. R. M. MCKENZIE,) . . Anniston, Ala.

1902.

- GRANDERSON, J. ANNA, Died, 1905.  
 SMITH, ELLA ELIZABETH, (MRS. J. G. GREEN,) . . . Died, 1908.  
 WHITE, CLAUDIA T., (MRS. W. K. HARRELD,) . . Atlanta, Ga.

1903.

- FORT, ELLA SHEPPARD, Teaching, . . . . . Richmond, Va.  
 FOSTER, ELLA E., (MRS. JOHN BILLUPS,) . . . Winterville, Ga.  
 GIBBS, WYLMA VIOLET, (MRS. ANDREW McDUFFY,)\* Ocala, Fla.  
 MOORE, FRANCES C., (MRS. CLARENCE C. WALKER,)\* Snow Hill, Ala.  
 THOMPSON, MARGARET A., (MRS. WM. HOOD,) . . . Boley, Okla.  
 YATES, PINKIE V., Teaching, . . . . . Cedar Lake, Tex.

1904.

- FOWLER, J. LOUISE, Teaching, . . . . . Americus, Ga.  
 JOHNSON, ALBERTA C., Teaching, . . . . . Talladega, Ala.  
 MCALPINE, HELEN A., Teaching, . . . . . Spelman Sem'y.  
 RIVERS, IDA J., (MRS. CLEM'T RICHARDSON,) Tuskegee Inst., Ala.  
 STRONG, MAMIE L., Teaching, . . . . . Jackson, Miss.

1905.

- DINKINS, MABEL F., Teaching, . . . . . Selma, Ala.  
 IRWIN, ANNIE B., Superv'g Teacher, Jeanes Fund, Americus, Ga.

JAMES, MARY E., (MRS. CHAS. H. WARDLAW,) . Atlanta, Ga.  
 KIGH, MINNIE ADELLE, (MRS. ARTHUR H. REAGIN,) Selma, Ala.  
 MASON, M. LOUISE, (MRS. ROBT. B. BLACKBURN,) Atlanta, Ga.  
 WASHINGTON, ANNIE V., Teaching, . . . . . Americus, Ga.  
 WINGATE, ANNA D., . . . . . Darlington, S. C.

1906.

DOWDELL, MARY M., (MRS. ROYAL C. KENNEDY,) Americus, Ga.  
 GRIMES, IDA M., Died, 1914.  
 JACKSON, MILDRED O., (MRS. OCIE R. BURNS,) . . . St. Joseph, Mo.  
 MORRIS, JESSIE B., Teaching, . . . . . La Grange, Ga.  
 PINKARD, IDA B. R., (MRS. I. A. COPPAGE,)\* . . La Grange, Ga.

1907.

BATTLE, BARBARA E., Supt. Masonic Home School, Americus, Ga.  
 CRAWFORD, ADDIE M., (MRS. ARTHUR REVERE,) . . Ensley, Ala.  
 DINKINS, DAISY D., Teaching, . . . . . Selma, Ala.  
 GOLDSBY, LUCY G., (MRS. DAVID W. UTZ,) . . Washington, D. C.  
 MATHIS, MRS. EZELLA, (MRS. W. M. CARTER,) . . Chicago, Ill.  
 RICE, CARRIE E., (MRS. SCOTT W. WILLIAMS,) Dixie, Ga.

1908.

BAILEY, LOTTIE R., (MRS. CHAS. A. BEADLE,) . Madison, Ala.  
 BUCHANAN, HANNAH E., Teaching, . . . . . Atlanta, Ga.  
 DURHAM, MATTIE C., Died, 1912.  
 JOHNSON, INEZ L., (MRS. E. D. DAVIS,) . . . Savannah, Ga.  
 RICHARDS, SUSIE A., (MRS. C. H. ROBINSON,) . . Athens, Ga.  
 WEEMS, CAMILLA, Fulton Co. Ind. Superv'r, Spelman Sem'y.

1909.

CHESNUTT, FRANCES L. (MRS. J. S. ABRAMS,) . . . Darlington, S. C.  
 GIBBS, ESSIE A., . . . . . Memphis, Tenn.  
 LEE, BIRDIE E., (MRS. ELBERT J. JONES,) . Tuskegee Inst., Ala.  
 MCALPINE, ETHEL T., (MRS. N. P. WALKER,) . Hendersonville, N. C.  
 TOWNS, ELIZABETH C., Teaching, . . . . . Spelman Sem'y.

1910.

BURWELL, PENELOPE, Teaching, . . . . . Morehouse Coll.  
 HARRISON, EMMA J., (MRS. C. A. J. MCPHERSON,) . . .  
 HOWARD, ESSIE O., Teaching, . . . . . Birmingham, Ala.  
 MOORE, BEULAH E., Teaching, . . . . . Birmingham, Ala.  
 MOORE, LUCINDA E., (MRS. SOLOMON D. ROSS,)\* Sardis, Miss.  
 STRICKLAND, CASSIE D., Teaching, . . . . . Athens, Ga.

1911.

GANNS, ROSA B., Teaching, . . . . . Bartow, Fla.  
 IRBY, JULIA A., Teaching, . . . . . Selma, Ala.  
 MOORE, LOTTIE V., (MRS. H. B. JAMES,) . . . Memphis, Tenn.

1912.

BEDINGFIELD, FLORA A., Teaching, . . . . . Marietta, Ga.  
 FISHER, CHARLOTTE E., Teaching, . . . . . Mt. Meigs, Ala.

GLENN, RUBY B., Teaching, . . . . . Little Rock, Ark.  
 HOWELL, SUSIE M., (MRS. K. D. REDDICK,) . . Americus, Ga.  
 McDONALD, A. GERTRUDE, Teaching, . . . . . Selma, Ala.  
 SNELLINGS, E. ROBERTA, Teaching, . . . . . Little Rock, Ark.

1913.

AGNEW, FRANCES A., Teaching, . . . . . Birmingham, Ala.  
 ANDREWS, LUCY G., Teaching, . . . . . Augusta, Ga.  
 CLEMENTS, CARRIE H., Teaching, . . . . . Brunswick, Ga.  
 REDDICK, MARY L., (MRS. D. W. WEST,) . . . . Graham, Va.  
 TODD, EFFIE M., Teaching, . . . . . Montgomery, Ala.  
 VOUGHT, RUTH L., Teaching, . . . . . Jacksonville, Fla.  
 WHITEHURST, LOTTIE B., Teaching, . . . . . Live Oak, Fla.

1914.

CREATH, BLANCHE L., Teaching, . . . . . Jackson, Miss.  
 JENKINS, ELIZABETH R., Teaching, . . . . . Live Oak, Fla.  
 JONES, LENA L., Bartow Co. Ind. Superv'r, Cartersville, Ga.  
 LEE, JOSIE E., . . . . . Marion, Ala.  
 LEE, JESSIE A., Teaching, . . . . . Marion, Ala.  
 MORRISON, MARY E., Teaching, . . . . . Jacksonville, Fla.  
 ROBINSON, RUTH E., Teaching, . . . . . Manatee, Fla.

## HIGH SCHOOL---ENGLISH-LATIN.

[College Preparatory Department until 1906.]

1897.

GRANDERSON, JANE ANNA, Died, 1905.  
 WHITE, CLAUDIA T., (MRS. W. K. HARRELD,) . Atlanta, Ga.

1899.

BAILEY, LOTTIE R., (MRS. CHAS. A. BEADLE, . Madison, Ala.  
 BROWN, DAISY E., M. D., (MRS. JAS. T. BONNER,) . . Mt. Sterling, Ky.  
 FOSTER, ELLA E., (MRS. JOHN BILLUPS,) . . . Winterville, Ga.  
 GRIGGS, MARY E., Died, 1901.  
 WISE, ELLA A., (MRS. JAMES LEWIS,) . . . . Wilmington, N. C.

1900.

HUBERT, JENCY, (MRS. A. R. REEVES,)\* . . . Little Rock, Ark.

1901.

BRYANT, SYLVIA C. J., B. Th., (MRS. P. J. BRYANT,)\* Atlanta, Ga.  
 CLANTON, EDNA M., Stenographer, . . . . . Tuskegee Inst., Ala.  
 GRANDERSON, MAYME E., (MRS. B. B. DANSBY,) . . . Jackson, Miss.  
 LINDSAY, FLORENCE E., Teaching, . . . . . Jackson, Miss.  
 REED, BESSIE E., Died, 1911.

1902.

NEWMAN, ADDIE W., (MRS. MATTHEWS,) . . . . New York, N. Y.



- QUARLES, FRANKIE M., (MRS. RICHARD JOHNSON,)\* Camilla, Ga.  
 SCOTT, LULA A., (MRS. HENRY CREW,) . . . Conyers, Ga.
- 1903.
- DIXON, TOLULA B., (MRS. D. S. BIGBY, JR.,) . . Honea Path, S. C.  
 MAXWELL, URSULA, (MRS. W. F. JENKINS,)\* . . . Claxton, Ga.  
 MILNER, ROBERTA M., Teaching, . . . . . Athens, Ga.  
 PRITCHARD, HATTIE E., (MRS. S. B. KYLES,) . . . . Milledgeville, Ga.  
 RUTHERFORD, HATTIE L. G., (MRS. J. B. WATSON,) . Atlanta, Ga.
- 1904.
- HART, GUSSIE P., (MRS. JAS. D. DICKERSON,) Vidalia, Ga.  
 LEWIS, CORNELIA V., . . . . . Atlanta, Ga.  
 NORRIS, BLANCHE F., (MRS. A. R. RAIFORD,)\* . . Washington, Ga.
- 1905.
- ANDREWS, MATTIE E., (MRS. ARTHUR ARMSTRONG,) . . . . .  
 BRYANT, EMMA O., Teaching, . . . . . Lawrenceville, Va.  
 COHEN, LOUISE R., (MRS. EDWARD W. MURRAY,) Marion, S. C.
- 1906.
- ARMWOOD, BLANCHE M., (MRS. D. W. PERKINS,)\* . . Tampa, Fla.  
 FULLER, TENA W., Died, 1907.  
 STRICKLAND, CASSIE, Teaching, . . . . . Athens, Ga.  
 YOUNG, IDA J. B., (MRS. WILLIAM PULLINS,)\* Macon, Ga.
- 1907.
- CHAPPLEAR, LIZZIE E., (MRS. HENRY C. YOUNG,) . Augusta, Ga.  
 REID, ADDIE MAY, (MRS. HARRY B. HARRIS,) Athens, Ga,  
 WILBORN, LILLIE D., (MRS. CALEB L. SMITH,)\* . . Delph, Ga.
- 1908.
- FLOYD, CLAUDIA L., (MRS. T. S. SAINÉ,) . . . Newnan, Ga.
- 1909.
- HUDSON, E. LEOLA, Science Student, . . . . . Brooklyn, N. Y.  
 SMITH, BERTHA L., College Student, . . . . . Washington, D. C.  
 FISHER, HATTIE R., (MRS. LEONARD J. KING,) . Portsmouth, Va.  
 ROEBUCK, ETHEL G., (MRS. DURR,) . . . . . Birmingham, Ala.  
 THRASH, MARY J., Teaching, . . . . . Meridian, Miss.
- 1910.
- DE LYONS, ERNESTINE M. (MRS. WALTER J. SIMS,) . . Savannah, Ga.  
 MASON, J. FANNIE, Teaching, . . . . . Little Rock, Ark.  
 MOORE, BEATRICE E., Teaching, . . . . . Sandersville, Ga.
- 1912.
- BARNER, DUFFERIN A., . . . . . Chattanooga, Tenn.  
 BURWELL, ELEZORA L., Business Student, . . . . . Oberlin, O.  
 FISHER, GERTRUDE E., (MRS. B. J. ANDERSON,) . . Birmingham, Ala.  
 HENDERSON, NANCY B., Teaching, . . . . . Ocilla, Ga.  
 LATIMER, ROSA C., College Class, . . . . . Spelman Sem'y.  
 WICKS, LEOLA A., Teaching, . . . . . West Point, Miss.

1913.

BARRETT, MAE P.,	Teaching, . . . . .	Rockingham, N. C.
MCCALL, EDITH A.,	College Student, . . . . .	Nashville, Tenn.
THOMPSON, MABEL E.,	Teaching, . . . . .	Greenwood, Miss.
WILLIAMS, VIRGINIA M.,	Teaching, . . . . .	Newberry, S. C.
WIMBISH, MAMIE H.,	Teaching, . . . . .	Atlanta, Ga.

1914.

CHANDLER, WILLIE E.,	. . . . .	Indianola, Miss.
HARRIS, SAMIRA I. O.,	. . . . .	Denver, Col.
JONES, BRENETTA W.,	College Student, . . . . .	Oberlin, O.
RICH, HENRIETTA L.,	Teaching, . . . . .	Conyers, Ga.
WIMBISH, EMMA L.,	College Class, . . . . .	Spelman Sem'y.

### HIGH SCHOOL---ENGLISH.

[Normal and Scientific Department until 1894.]

[Academic Department from 1894 to 1906.]

1887.

BARKSDALE, ELLA N.,	(MRS. WM. R. BROWN,) . . .	Jersey City, N. J.
HOWARD, CLARA A.,	Teaching, . . . . .	Spelman Sem'y.
MITCHELL, LUCINDA,	(MRS. JOSEPH H. MARTIN,) .	Albuq'rque, N. M.
SMITH, MRS. ADELINE J.,	(MRS. WILLIS SMITH,) . . .	Died, 1910.
WAUGH, SALLIE B.,	(MRS. WM. MCBRYAR,) . . .	Sedalia, N. C!
WILLIAMS, ELLA L.,	(MRS. D. J. WIMBISH,) <sup>†</sup> . .	Atlanta, Ga.

1888.

CARSWELL, IDA B.,	(MRS. T. J. WILSON,) . . .	Meridian, Miss.
FONTAINE, MARY A.,	Died, 1891.	
GORDON, NORA A.,	(MRS. S. C. GORDON,) . . .	Died, 1901.
HUMPHREYS, MRS. ROSELLA B.,	(MRS. JOS. THOMAS,)* <sup>†</sup>	Social Circle, Ga.
MADDOX, VICTORIA W.,	(MRS. F. M. SIMMONS,)* <sup>†</sup> . .	Washington, Ga.
MC EWEN, ALICE E.,	(MRS. BOWLES,) . . . . .	Mobile, Ala.
MCKINLEY, SARAH L.,	Teaching, . . . . .	Macon, Ga.
SLOAN, SELINA M.,	(MRS. H. R. BUTLER,) . . .	Atlanta, Ga.
WALLS, CARRIE P.,	(MRS. MARK H. GASSAWAY,)*	Anderson, S. C.

1889.

BERRY, MINNIE C.,	(MRS. H. C. ROBINSON,) <sup>†</sup> . .	Washington, D. C.
GLENN, LIZZIE M.,	(MRS. T. A. MILLEDGE,) . . . . .	
JACKSON, DORA A.,	(MRS. A. B. MURDEN,)* . . .	Athens, Ga.
LAY, SARAH H.,	(MRS. WILLIAM KNIGHT,)* . . .	Rockmart, Ga.
LEWIS, MRS. SALLIE A.,	. . . . .	Macon, Ga.
PORTER, CORNELIA A.,	(MRS. LEE HALL,) . . . . .	Pine Grove, Ga.
THOMAS, THOMASINE E.,	Died, 1889.	
WATSON, MARY J.,	Died, 1892.	

1890.

ADKISON, EPSIE M.,	(MRS. J. H. JACKSON,) . . .	Chicago, Ill.
COCHRANE, LULA M.,	(MRS. CRAWFORD,) . . . . .	

COOPER, MARTHA LEE,	(MRS. F. R. MOYE,)*	. . . Dawson, Ga.
ECHOLS, S. MAGNOLIA,	(MRS. BOYD A. GORDON,)	. Athens, Ga.
HOOD, ELNORA M.,	(MRS. J. H. MOORE,)	. . . Griffin, Ga.
JONES, RUBIE B.,	(MRS. EDWARD JONES,) <sup>†</sup>	. . Died, 1909.
JONES, RUHAMAH S.,	Teaching,	. . . Atlanta, Ga.
KNOX, ELLA C.,	. . . . .	. . . . .
SINKFIELD, EMMA J.,	(MRS. J. D. MOATES,)	. . . Vaiden, Miss.
SMARR, ABBIE L.,	(MRS. B. D. KENDRICK,) <sup>†</sup>	. . Griffin, Ga.
STUART, HANNAH M.,	Teaching,	. . . Senoia, Ga.
TURNER, ROSA S.,	(MRS. S. D. ROZIER,)	. . . Dublin, Ga.
WHITE, HATTIE M.,	(MRS. G. W. HILL,)	. . . Died, 1902.
WHITE, MAMIE B.,	(MRS. ISAIAH BLOCKER,)	. . Augusta, Ga.

## 1891.

BAILEY, PSYCHE S.,	(MRS. JOHN W. McRAE,)	. Atlanta, Ga.
BELL, QUEEN A. V.,	(MRS. JOSEPH H. SLOAN,)	. Millen, Ga.
BURTON, IDA M.,	(MRS. G. W. JONES,)	. . . Augusta, Ga.
CARSON, ANNIE E.,	(MRS. D. S. ORNER,)*	. . . Savannah, Ga.
DE LAMOTTA, MRS. EMMA S., <sup>‡</sup>	(MRS. A. DE LAMOTTA,)	. Died, 1903.
HOWELL, SENIE S.,	Died,	1898.
JENKINS, SARAH B.,	Teaching,	. . . Augusta, Ga.
JOHNSON, WILLMENIA,	Teaching,	. . . De Land, Fla.
MADDOX, LAURA J.,	(MRS. R. L. JONES,)	. . . Atlanta, Ga.
MADDOX, SOPHIA L.,	(MRS. J. T. AVERY,)*	. . . College Park, Ga.
RAMSEY, VIRGINIA E. N.,	(MRS. GEORGE CHEATHAM,)	El Paso, Tex.
REID, ROSALIND L.,	(MRS. J. F. SHANNON,)	. . Kansas City, Mo.
SMITH, PAULINE,	(MRS. MORGAN,)	. . . . .
WHITAKER, LULA L. E.,	. . . . .	. Atlanta, Ga.
WILLIAMS, EVELYN M.,	(MRS. RANSOM BINYARD,)	Died, 1906.
WIMBISH, LAVINIA M.,	(MRS. THOMAS J. JONES,)	. . Greenville, Ga.

## 1892.

GORDON, MARY M.,	(MRS. JOHN A. SCOTT,)	. . . Riverside, Cal.
HILL, ROSA E.,	Died,	1894.
HOWELL, HANNAH A.,	(MRS. M. W. REDDICK,)*	. . Americus, Ga.
JOHNSON, MAMIE E.,	(MRS. W. F. COZART,)	. . . Atlantic City, N. J.
MAHARDY, SARAH J.,	(MRS. JAMES B. EWING,)	. . Idabel, Okla.
MALPHUS, HATTIE E.,	(MRS. J. T. JONES,)*	. . . Oliver, Ga.
MATTHEWS, ROSA L.,	(MRS. J. W. HOLLEY,)*	. . . Atlanta, Ga.
MILTON, JESSIE R.,	(MRS. S. B. BACON,)	. . . Died, 1914.
RICHARDSON, DELLA M.,	(MRS. J. H. GADSON,)*	. . . Rome, Ga.
TURNER, LULA L.,	. . . . .	. . . . .
WASHINGTON, LULA E.,	Teaching,	. . . La Grange, Ga.
WEST, NARCISSA,	(MRS. M. E. EDWARDS,)	. . Died, 1910.
WINGFIELD, FANNIE S.,	(MRS. E. T. MARTIN,)	. . . Chicago, Ill.



1893.

BROWN, ADDIE K.,	(MRS. NORRIS JONES,)* . . .	Cartersville, Ga.
BRYANT, HATTIE F.,	(MRS. C. N. HAMPTON,) . . .	Paris, Tex.
COUNTEE, LULA B.,	(MRS. WM. B. HEMINGWAY,) . . .	Memphis, Tenn.
DAWSON, MARIA A.,	(MRS. C. T. JAMES,) . . .	Baconton, Ga.
MURRAY, GERTRUDE H.,	(MRS. A. T. LITES,) * . . .	Milledgeville, Ga.
RAGLAND, MARTHA A.,	(MRS. M. S. G. ABBOTT,) . . .	Pensacola, Fla.
SHOWERS, FANNIE L.,	Teaching, . . . . .	Little Rock, Ark.
WILLIAMS, MARTHA A.,	Died, 1900.	

1894.

BELL, LULA A.,	(MRS. E. W. WEST,) . . .	Hensley, Ark.
CARTER, SUSIE A.,	Died, 1907.	
DANIELS, GEORGIA B.,	Died, 1896.	
DE LANY, ANNIE R.,	Teaching, . . . . .	Fernandina, Fla.
DE LANY, EMMA B.,	Mission-work, . . . . .	Liberia, Africa.
FINLEY, CORA B.,	Teaching, . . . . .	Atlanta, Ga.
GIBBS, LILLIE L.,	(MRS. S. C. MITCHELL,)+* . . .	Water Valley, Ala.
GORDON, LIZZIE S.,	(MRS. JOHN H. HAWKINS,) . . .	Riverside, Cal.
MORROW, ADELLA M.,	Died, 1894.	
RAMSEY, BERTHA S.,	. . . . .	
ROUNTREE, M. MAGGIE,	Teaching, . . . . .	Grovania, Ga.

1895.

BROOKINS, MATTIE J.,	(MRS. S. C. JOHNSON,)* . . .	Arkan's City, Ark.
GLOVER, BESSIE A.,	Died, 1906.	
GRANDERSON, JANE ANNA,	Died, 1905.	
HAWKINS, MARY E.,	Died, 1901.	
JACKSON, VIRGINIA C.,	(MRS. E. M. MORSE,)+* . . .	Athens, Ga.
REID, LUCY T.,	(MRS. CARR,) . . . . .	
SMITH, ELLA E.,	(MRS. J. G. GREEN,) . . .	Died, 1908.

1896.

BARTON, BEULAH B.,	(MRS. P. O. WAILES,) . . .	Died, 1901.
DUVAL, MATTIE F.,	(MRS. D. S. DAYS,) . . . . .	Gainesville, Fla.
MASON, FRANKIE L.,	(MRS. MILES THOMAS,) . . .	Atlanta, Ga.
MASON, MARY A.,	(MRS. E. S. MELTON,) . . .	Died, 1910.
PAYTON, LELA M. S.,	(MRS. W. L. MORAGNE,) . . .	Honea Path, S. C.

1897.

GRANBERRY, L. GEORGIA,	(MRS. JOHN W. LEWIS,) . . .	Atlanta, Ga.
JOHNSON, JOSEPHINE,	(MRS. CHARLES GORDON,) . . .	Riverside, Cal.
MCLEAN, CORA R.,	(MRS. HUGH E. FAVOR,) . . .	Powder Spr'gs, Ga.
MINOR, IDA M.,	. . . . .	New York, N. Y.
MURRAY, ANICA E.,	(MRS. H. L. DUHART,) . . .	Sanford, Fla.
NEAL, MATTIE L.,	(MRS. JAMES MERRITT, JR.,)* . . .	Farmington, Ga.
PHILLIPS, MABEL D.,	(MRS. JOHN A. MASON,) . . .	Chattan'ga, Tenn.
ROGERS, M. MAGGIE,	(MRS. GRIFFIN HOWARD,)* . . .	Morehouse Coll.
THOMAS, HELEN,	(MRS. H. WILSON,) . . . . .	Died, 1909.

- THOMAS, MINNIE LEE, (MRS. J. H. BROWN,) . . . . Lakeland, Fla.  
 TURMAN, IDA M., (MRS. B. H. GARTRELL,)\*† . Bordeaux, S. C.  
 1898.
- ADAMS, SALLIE L. D., (MRS. WILLIAM MOSELEY,)\* Aiken, S. C.  
 DECATUR, LILLIAN T., (MRS. R. L. SUTTLES,) . . . Atlanta, Ga.  
 FISHER, GERTRUDE, (MRS. GEO. V. A. BROWN,) . Died, 1908.  
 HILL, LAVINIA V., (MRS. N. T. MITCHELL,) . . Died, 1912.  
 HOUSER, TRUDIE M., (MRS. R. M. MCKENZIE,) . . Anniston, Ala.  
 HUBERT, JENCY, (MRS. A. R. REEVES,)\* . . . Little Rock, Ark.  
 HUMPHREY, GEORGIA B. D., Died, 1899.
- PRIESTER, Q. VICTORIA, Teaching, . . . . . Allendale, S. C.  
 1899.
- ARMSTRONG, LAVONIA, (MRS. NEWLAN R. HARRIS,) Shellman, Ga.  
 FREEMAN, ADELLA L., . . . . . Topeka, Kans.  
 GULLEY, EUGENIA M., (MRS. G. W. WADE,) . . . . Selma, Ala.  
 THOMAS, ABBIE B., (MRS. R. L. COOK,) . . . . Died, 1914.  
 1900.
- DIXON, MALVINA, (MRS. G. R. PINKSTON,) . . Sparta, Ga.  
 DWELLE, GEORGIA R., M. D., (MRS. GEO. HOWELL,) . Atlanta, Ga.  
 HAMILTON, KITTIE L., Teaching, . . . . . Thomasville, Ga.  
 MERIWETHER, SENIE L., Died, 1906.  
 SPEER, MARY AGNES, (MRS. KING,) . . . . . Anniston, Ala.  
 STUBBS, MARGARET W., Died, 1913.  
 WHITMORE, EULA B., Teaching, . . . . . Augusta, Ga.  
 1901.
- BARROWS, MAMIE E., Died, 1901.  
 CRITTENDEN, ANNIE, Died, 1901.  
 DOWDELL, MARY M., (MRS. ROYAL C. KENNEDY,) Americus, Ga.  
 FISHER, S. MATTIE, Student, Miss. Tr. School, Chicago, Ill.  
 HALL, LILLIE V., (MRS. ISAAC C. SMITH,) . . . Died, 1907.  
 HUBERT, BEATRICE, (MRS. R. S. DOUTHARD,) Atlanta, Ga.  
 JONES, LILLIE O., (MRS. J. W. HUBERT,)\* . . White Plains, Ga.  
 REESE, SADIE B., (MRS. JAS. A. CLARK,) . . . . .  
 RIVERS, IDA J., (MRS. CLEM'T RICHARDSON,) Tuskegee Inst., Ala.  
 RODGERS, GEORGIA J., (MRS. WILLIAM ODOM,) . . Columbus, Ga.  
 YATES, PINKIE V., Teaching, . . . . . Cedar Lake, Tex.  
 1902.
- COLLIER, EUGENIA A., (MRS. J. A. MARTIN,) . . . . .  
 FOWLER, J. LOUISE, Teaching, . . . . . Americus, Ga.  
 HARRIS, MRS. HATTIE E., (MRS. LUCIUS G. HARRIS,) . Atlanta, Ga.  
 HARRIS, MILLIE A., (MRS. WM. A. HARRIS,) . . Atlanta, Ga.  
 IRWIN, ANNIE BELLE Superv'g Teacher, Jeanes Fund, Americus, Ga.  
 JACKSON, AMERICUS, (MRS. WM. A. PYRON,) . . Died, 1908.  
 MAJOR, MARY E., (MRS. M. C. BROWNING,) . . Died, 1904.  
 MASON, MARY LOUISE. (MRS. ROBT. B. BLACKBURN,) Atlanta, Ga.

PINKARD, IDA-B. R., (MRS. I. A. COPPAGE,)\* . . . La Grange, Ga.  
 TURNER, ALICE L. W., . . . . . Plattsburg, N. Y.

1903.

CARROLL, RUTH B., M. D., Doctor, . . . . . Cheraw, S. C.  
 CRAWFORD, LIZZIE, Teaching, . . . . . Greenville, Ga.  
 GIBBS, ESSIE A., . . . . . Memphis, Tenn.  
 HAWKINS, RACHEL, (MRS. JOHN HILLMAN,) . . . Columbus, Ga.  
 JOHNSON, S. ETHA, (MRS. J. H. BIVINS,) . . . Greenville, Miss.  
 KEYES, CLARISSA B., (MRS. MELVIN JONES,) . . . Los Angeles, Cal.  
 MILLNER, MAGGIE L., (MRS. W. P. CARTER,) . . . Goldsboro, N. C.  
 MORRIS, JESSIE B., Teaching, . . . . . La Grange, Ga.  
 THOMAS, BERTHA E., (MRS. JAMES A. LEWIS,) . . Alexandria, Va.  
 WATSON, FRANCES A., Teaching, . . . . . Montgomery, Ala  
 YONGEBLÆD, SULUKA, M. D., (MRS. W. A. HOLMES,) . Ft. Valley, Ga.

1904.

BATTLE, BARBARA E., Supt. Masonic Home School, Americus, Ga.  
 BOYNTON, SHELBY L., M. D., (MRS. JAS. A. ROBINSON,) Atlanta, Ga.  
 CALLOWAY, EDNA A., . . . . . Union Spr'gs, Ala.  
 CRAWFORD, ADDIE MAY, (MRS. ARTHUR REVERE,) . . Ensley, Ala.  
 DURHAM, MAMIE S., (MRS. JOHN COOKE,) . . . . .  
 HAIRSTON, MARY L., Died, 1912.  
 LOGAN, MRS. CRIMORA E., Died, 1908.  
 MASON, WILLIE L., . . . . . Atlanta, Ga.  
 PORTER, MARY C., (MRS. C. T. JOHNSTON,) . . Columbus, Ga.  
 YATES, NANNIE S., (MRS. THOMAS COUNTÉE,) . . . . .

1905.

GARRISON, ESTHER L., Teaching, . . . . . Newberry, S. C.  
 JOHNSON, VICTORIA C., Teaching, . . . . . Birmingham, Ala.  
 KIGHT, PEARL S., Teaching, . . . . . Newnan, Ga.  
 SCOTT, ANNA, . . . . . Greenville, S. C.  
 YATES, ALMA M., Millinery, . . . . . Houston, Tex.

1906.

ACKER, MAGGIE L., (MRS. C. W. WEBB,) . . . . . Died, 1913.  
 BLUE, SARAH C., (MRS. W. T. MARTIN,) . . . Cordele, Ga.  
 BURKES, EMMIE LEILA, Teaching, . . . . . Atlanta, Ga.  
 GLENN, RUBY B., Teaching, . . . . . Little Rock, Ark.  
 HOLMAN, IRA V., (MRS. E. L. COLLIER,) . . . Died, 1913.  
 JONES, IDA B., (MRS. EDWARD PURIFOY,) Died, 1909.  
 JONES, SUSAN E., (MRS. JAS. H. KENDALL,) . Augusta, Ga.  
 MILES, A. LENA, (MRS. EDWARD L. DAVIS,) . Atlanta, Ga.  
 PITTMAN, MARY L., Teaching, . . . . . Albany, Ga.  
 ROBERSON, ANNIE M., Teaching, . . . . .  
 SEABROOKS, E. LEONORA, (MRS. WM. PINKNEY,) . . . Died, 1909.  
 WEBB, ALICE, Teaching, . . . . . Anderson, S. C.



WHITE, LILLIE BELLE, (MRS. JAMES T. SAXON,) . . Milledgeville, Ga.  
 YONGEBLÖD, EMMA Z., (MRS. ANDREW H. LOGAN,) . Nashville, Tenn.

1907.

ANDREWS, LUCY G., Teaching, . . . . . Augusta, Ga.  
 CHILDS, LAURA A., (MRS. J. A. MALLARD,)\* . . Rockingham, N. C.  
 FREDERICK, ALICE G. M., Bookkeeping, . . . . . W. Palm B'ch, Fla.  
 GAINES, MARY L., Teaching, . . . . . Jefferson, Ga.  
 HARRIS, NELLIE, (MRS. W. W. HANNON,) . . Atlanta, Ga.  
 HARRIS, SADIE B., Nursing the Sick, . . . . . Atlanta, Ga.  
 HARRIS, SADIE LEE, (MRS. KEMP,) . . . . .  
 JACKSON, DAISY E., Stenographer, . . . . . Atlanta, Ga.  
 JORDAN, CORA J., (MRS. G. E. WHITE,) . . . . Nashville, Tenn.  
 LA GARDE, FLORIDA A., Teaching, . . . . . Berwick, La.  
 WATSON, GEORGIA A., Teaching, . . . . . Linwood, Ala.

1909.

CHAPLAIN, VIOLA L., Teaching, . . . . . Marshall, Tex.  
 FISHER, CHARLOTTE E., Teaching, . . . . . Mt, Meigs, Ala.  
 HORTON, CLARA B., Teaching, . . . . . Menlo, Ga.  
 SNELLINGS, ROBERTA, Teaching, . . . . . Little Rock, Ark.

1910.

GRIFFIN, MARY E., (MRS. JAS. JOHNSON,) . . . Columbus, Miss.  
 MOORE, ADA O., Teaching, . . . . . Atlanta, Ga.  
 MOORE, MARY B., Teaching, . . . . . Atlanta, Ga.

1911.

ALLEN, SALENA T., (MRS. ERNEST NORWOOD,) Atlanta, Ga.  
 BREWER, SAMANTHA B., Teachers Prof. Class, . . . Spelman Sem'y.  
 GIBSON, MARY E., Teaching, . . . . . Ellenwood, Ga.

## HIGH SCHOOL---ENGLISH-NORMAL.

1909.

BEDINGFIELD, FLORA A., Teaching, . . . . . Marietta, Ga.  
 DAVIS, ANNIE M., (MRS. E. R. MATTISON,) . . Atlanta, Ga.  
 DAVIS, IDA BELLE, Teaching, . . . . . Atlanta, Ga.  
 GANNS, ROSA B., Teaching, . . . . . Bartow, Fla.  
 GRIFFIN, IDA L., Teaching, . . . . . Atlanta, Ga.  
 MOORE, LOTTIE V., (MRS. H. B. JAMES,) . . . . Memphis, Tenn.  
 SMITH, BLANCHE A., . . . . . St. Elmo, Tenn.

1910.

BIBB, MABEL D., Teaching, . . . . . Birmingham, Ala  
 HOWELL, SUSIE M., (MRS. K. D. REDDICK,) . . . Americus, Ga.  
 JONES, MARY E., M. T. Student, . . . . . Huntsville, Ala.

1911.

BOX, EFFIE M., . . . . . Atlanta, Ga.

MILLER, LOTTIE M.,	Teaching, . . . . .	Atlanta, Ga.
MONTGOMERY, HATTIE,	Teaching, . . . . .	Rome, Ga.
SMITH, BEATRICE E.,	Teaching, . . . . .	Dublin, Ga.
WALKER, SALLIE E.,	Teaching, . . . . .	So. Atlanta, Ga.

1912.

ADKINS, INEZ E.,	Office Work, . . . . .	Spelman Sem'y.
AVERY, FANNIE C.,	Teaching, . . . . .	Opelika, Ala.
BROWN, AMELIA E.,	Teaching, . . . . .	West Point, Ga.
EUBANKS, LILLIAN C.,	Teachers Prof. Class, . . .	Spelman Sem'y.
GRAY, MATTIE L.,	(MRS. J. H. GILTON,) . . .	Thomaston, Ga.
GREENLEE, SOPHIE M.,	Teaching, . . . . .	Roanoke, Ala.
HILL, RAMON H.,	Teaching, . . . . .	Waycross, Ga.
HUGHES, LEATHA J.,	. . . . .	Decatur, Ala.
IRWIN, ROSA L.,	Teaching, . . . . .	Spelman Sem'y.
JAMES, NETTIE C.,	Teaching, . . . . .	Milledgeville, Ga.
JONES, LENA L.,	Bartow Co. Ind. Supv'r, . .	Cartersville, Ga.
LOVEJOY, BETTIE E.,	Teaching, . . . . .	Curryville, Ga.
RICHEY, GERTRUDE M.,	Teaching, . . . . .	Anderson, S. C.
ROBINSON, JOSIE B.,	Teaching, . . . . .	Kowaliga, Ala.
WILLIAMS, LUCILE,	Teaching, . . . . .	Atlanta, Ga.

1913.

BARNER, ERNESTINE M.,	. . . . .	Chattanooga, Tenn.
COMER, VESSIE L.,	Stenographer, . . . . .	Atlanta, Ga.
HARRIS, ETHEL MAE,	Teaching, . . . . .	Ellenwood, Ga.
HAWKINS, EULA L.,	Teaching, . . . . .	Waycross, Ga.
HUBERT, LUCY A.,	Teaching, . . . . .	Dixie, Ga.
JOHNSON, MARY ALICE,	Teaching, . . . . .	Higgston, Ga.
JONES, CHARLOTTE M.,	Teaching, . . . . .	Opelika, Ala.
MILLS, ELLA LEE,	(MRS. LUCIUS RUSSELL,) . .	De Land, Fla.
SPENCER, MARY E.,	Teaching, . . . . .	Quitman, Ga.
TINSLEY, MARY F.,	Teachers Prof. Class, . . .	Spelman Sem'y.

1914.

BRAILSFORD, DINAH E.,	Teaching, . . . . .	De Land, Fla.
BROCKENTON, LILLIAN B.,	Teaching, . . . . .	Timmons ville, S. C.
CALLAWAY, HATTIE W.,	. . . . .	Atlanta, Ga.
CARLTON, ELLA W.,	Teaching, . . . . .	Gabbettville, Ga.
EDWARDS, EMMA L.,	Teaching, . . . . .	Lovejoy, Ga.
GOLSON, WILLIE MAE,	Teachers Prof. Class, . . .	Spelman Sem'y.
GRIGGS, M. MAGNOLIA,	Teachers Prof. Class, . . .	Spelman Sem'y.
HANFORD, ELENORA V.,	Teaching, . . . . .	Timmons ville, S. C.
HANKERSON, ARABELLA A.,	. . . . .	Tallahassee, Fla.
HUDSON, ETHEL E.,	Church Secretary, . . . .	Atlanta, Ga.
JONES, PINKIE M.,	Teaching, . . . . .	Spelman Sem'y.
McRAE, A. MARGUERITE,	Teaching, . . . . .	Dublin, Ga.

---

MOSS, EUMAS W.,	Teaching, . . . . .	Birmingham, Ala.
OVERSTREET, WILLYE V.,	Teaching, . . . . .	Simpsonville, Ky.
ROSS, CHARLOTTE B.,	. . . . .	. . . . .
TIMBERS, JOSIE LEE,	. . . . .	Atlanta, Ga.
WILLIAMS, LUCY,	Teachers Prof. Class, . . .	Spelman Sem'y.

---

## NURSE TRAINING DEPARTMENT MACVICAR HOSPITAL.

1902.

POWELL, GUSSIE,	(MRS. WEST JOHNSON,)† . .	Montgomery, Ala.
WILLIAMS, HATTIE,	Nursing the Sick, . . . . .	Savannah, Ga.

1903.

DANIELS, LEONORA,	(MRS. WM. B. HOWARD,) . .	Covington, Ga.
WALKER, KATIE,	. . . . .	. . . . .

1904.

IVY, ESTELLA B. M.,	Nursing the Sick, . . . . .	Atlanta, Ga.
ROBINSON, CORA,	Nursing the Sick, . . . . .	Atlanta, Ga.

1905.

MASSÉY, MRS. HELEN D.,	Nursing the Sick, . . .	Atlanta, Ga.
------------------------	-------------------------	--------------

1906.

ANDREWS, LUDIE,	Hospital Nurse, . . . . .	Atlanta, Ga.
COLLINS, CHARITY E.,	Ass't, Med. School Sup'r, .	Atlanta, Ga.

1907.

BOLLING, E. KATE D.,	(MRS. W. H. JONES,) . . . . .	. . . . .
GREGORY, PAULINE P.,	(MRS. W. A. JOHNSON,) . .	Montgomery, Ala.

1908.

BLUE, WILLIE L.,	Nursing the Sick, . . . . .	Atlanta, Ga.
------------------	-----------------------------	--------------

1909.

CHISHOLM, ROSA E.,	Nursing the Sick, . . . . .	Augusta, Ga.
HARRIS, ROSA E.,	Supt. of Hospital, . . . . .	Atlanta, Ga.
MOSS, FLORENCE L.,	(MRS. PAUL J. BLACKWELL,) .	Augusta, Ga.

1910.

BAUGH, BLANCHE,	(MRS. EUGENE JONES,) . . .	Atlanta, Ga.
CAMPBELL, ESSIE R.,	Nursing the Sick, . . . . .	Jacksonville, Fla.
DANIEL, WILLIE MAE,	. . . . .	St. Louis, Mo.
HARRIS, MAMIE N.,	Nursing the Sick, . . . . .	Atlanta, Ga.
HUGHLEY, MISSOURI W.,	Nursing the Sick, . . . . .	Atlanta, Ga.
LAWRENCE, ALMA J.,	(MRS. S. B. GORDON,) . . .	Cartersville, Ga.
REED, DAISY M.,	Supt. Jubilee Hospital, . .	Henderson, N. C.
THOMPSON, VICTORIA E.,	Nursing the Sick, . . . . .	Thomasville, Ga.
WILSON, LOUISE J.,	. . . . .	Meridian, Miss.
ZACHARY, CLAUDIA V.,	Nursing the Sick, . . . . .	Savannah, Ga.



	1911.
COCHRAN, BENETTA,	Matron A. and M. Hosp'l, Tallahassee, Fla.
ROBERTS, LESSIE L.,	Matron, . . . . . Tyler, Tex.
	1912.
ELLIOTT, SARAH L.,	(MRS. D. H. CORBIN,) . . . . .
MCINTYRE, RACHEL F.,	Died, 1914.
MOBLEY, CARRIE A.,	Nursing the Sick, . . . . . Griffin, Ga.
WALKER, MARGIE A.,	. . . . . Okolona, Miss.
	1913.
CUNNINGHAM, CARRIE B.,	Nursing the Sick, . . . . . Atlanta, Ga.
FAULKNER, MATTIE L.,	Nursing the Sick, . . . . . Montgomery, Ala.
GORDON, BURMAH E.,	Nursing the Sick, . . . . . Forsyth, Ga.
JONES, A. ETHEL,	Nursing the Sick, . . . . . Atlanta, Ga.
MORGAN, LUCILE G.,	State Hospital Nurse, . . . . . Osawatomie, Kans.
	1914.
ARMSTRONG, ROSA L.,	Nursing the Sick, . . . . . Union Point, Ga.
BERRY, MARY EMMA,	Nursing the Sick, . . . . . Birmingham, Ala.
EUBANKS, LENA E.,	Nursing the Sick, . . . . . Atlanta, Ga.
GREEN, SUSIE LEE,	Nursing the Sick, . . . . . Montgomery, Ala.
HARDGE, RUBY C.,	Nursing the Sick, . . . . . Tampa, Fla.
MCRAE, BETHENA B.,	Died, 1914.
MOORE, ALICE J.,	Nursing the Sick, . . . . . La Grange, Ga.
NOLLEY, SUSIE W.,	Nursing the Sick, . . . . . Atlanta, Ga.
PITTS, ALMA E.,	Nursing tne Sick, . . . . . Atlanta, Ga.

---

### ADVANCED PIANO COURSE.

	1914.
LEE, BEATRICE S.,	Teaching, . . . . . Sardis, Miss.

---





3 0112 105934274