

**NEW YORK  
CENTRAL**

**NEW YORK  
CENTRAL**

**Take it often —  
it's "take-it-easy"  
travel!**

**Take it often —  
it's "take-it-easy"  
travel!**

**NYC**

**NYC**



# Helpful Guide To Reading Your Time Table

You will find this New York Central Time Table easy to understand, if you read and follow the suggestions offered here.

## INDEX TO TIME TABLE

On pages 2 and 3 you will see the General Index . . . Index of Train Service Tables . . . and the Index to stations served by the New York Central System.

**General Index** tells you on which pages to look for such information as: Baggage Information, Map of New York Central System, Occupancy of Sleeping Cars, etc.

**Index of Train Service Tables.** Specifies the Time Table Number to refer to for train service between specific cities.

**Index to Stations.** This is an alphabetical listing of the stations served by the New York Central System. First locate the name of the station you are going to. Note the Table Number (not page number). Then turn to the Time Table Number shown in the index. Here you will find the schedules of trains arriving at and departing from your destination.

**2**

TABLE No.	STATION	AM	PM
0.0	NEW YORK Grand Central Terminal	2:45	2:55
4.2	125th Street		
5.0	138th Street		
14.5	Yonkers	3:30	3:35
24.5	Tarrytown	4:30	4:35
30.2	Ossining	5:30	5:35
32.7	Harmon	6:30	6:35
40.6	Peeckskill	7:30	7:35
45.4	Manitou	8:30	8:35
49.1	Garrison	9:30	9:35
51.8	Cold Spring		
58.3	Beacon (Newburgh) Note		
61.8	Chelsea		
64.4	Hamburg		

### TIME TABLE

As you read the Time Table you will note the larger stations are listed in bolder type faces. Across the page, from left to right, is a listing of various trains by train number or name serving these stations. Read down the column of stations until you find the station of your departure and station of your destination. Opposite, across the page, you will find the time that trains arrive at and leave these stations.

### MAKING TRAVEL PLANS

You will find the map of the New York Central System, in the center of the Time Table, helpful when planning a trip. Mark on the map the points between which you wish to travel, then draw a line over the route. This is particularly helpful in locating your connecting point should one of your stations be off the through line of travel. Rail and Pullman fares between principal cities are shown on pages 46 and 47. The types of equipment on various trains are shown on pages 38 through 43.

**3**

TABLE No.	STATION	7:30	10:15	9:30
142.2	ALBANY			
149.0	Schenectady	7:58	10:48	10:02
150.9	Amsterdam	8:15	11:15	10:23
151.8	Fonda (Fultonville)		11:50	10:39
152.7	Palatine Bridge (Gene)	8:40	12:18	10:51
153.6	Fort Plain		12:56	
154.5	St. Johnsville		1:34	
155.4	Little Falls	9:05	12:52	
156.3	Herkimer (Mohawkillon)	9:17	1:48	11:11

LIGHT FIGURES are A.M.  
DARK FIGURES are P.M.

The time between 12:01 o'clock midnight and 12:00 o'clock noon is indicated by light-face figures. Between 12:01 o'clock noon and 12:00 o'clock midnight is indicated by dark-face figures. You will also find A.M. and P.M. printed at the top and bottom of each train schedule to assist you in reading the time stops correctly.

**TIME.** Standard Time is used throughout. It is referred to as Eastern Time (E.T.) or Central Time (C.T.) as the case may be.

**4**

- Daily.
- † Sunday only.
- ‡ Daily except Sunday.
- § Daily except Monday.
- ¶ Daily except Saturday.
- ▲ Daily except Saturday and Sunday.
- E.T.—Eastern Standard Time.
- C.T.—Central Standard Time.
- ☞ Rail-Auto Service available at this point.
- ☛ This train does not carry baggage.

### REFERENCE MARKS

Trains make a regular stop at stations where time figures only are shown. Where no time is shown, the train does not stop. When a letter or symbol appears with the time figure, that train stops only under certain conditions. An explanation of the reference marks or symbols is given in a footnote on the bottom of the page, or on the adjacent page. If you encounter a symbol in the table you are consulting, be sure to check the footnote. The information may affect your travel plans.

### ADDITIONAL USEFUL INFORMATION

New York Central Ticket Offices, Passenger Sales Representatives, and Freight Sales Representatives are listed on Page 48 and the inside back cover. Any of these representatives will gladly and promptly assist you in planning a trip or in shipping freight. Quick Reference Service Tables and other Display notices throughout the time table provide additional information that makes it easy and a pleasure to travel on the New York Central.

**A dozen ways to go deluxe**  
*all by Central coach!*



Creature comforts you never expected to find on a coach are yours on today's New York Central trains!

For instance, you can go by *coach* on the famous *Commodore Vanderbilt* and enjoy porter service, pillows, first-class dining facilities, and a spacious lounge car for casual chatting and cocktails. You're assured of fast schedules and convenient arrival and departure times. And your coach seat is *reserved*.

All of these crack trains offer New York Central *deluxe coach* service:

- 1. Empire State Express**—New York, Boston, Cleveland, Detroit, Buffalo. Hostess aboard.
- 2. Pacemaker**—Chicago, Buffalo, New York.
- 3. Commodore Vanderbilt**—New York, Chicago.
- 4. James Whitcomb Riley**—Cincinnati, Chicago.

- 5. Ohio State Limited**—New York, Columbus, Dayton, Cincinnati.
- 6. Knickerbocker**—New York, Boston, Indianapolis, St. Louis.
- 7. New England States**—Boston, Toledo, Chicago.
- 8. Twilight Limited**—Chicago, Detroit.
- 9. Detroit**—New York, Detroit. (No lounge facilities for coach passengers.)
- 10. Mercury**—Cleveland, Detroit.
- 11. Mercury**—Chicago, Detroit.
- 12. Royal Palm**—Detroit, Toledo, Cincinnati, Miami. (You go straight through on connecting trains without changing cars.)







QUICK REFERENCE TIME TABLES

NEW YORK—BOSTON—CHICAGO

Table with columns for stations: NEW ENG. STATES, COMM. V'BILT, 20th CENTURY, NEW ENG. STATES, WOLV-ERINE, CHI-CAGOAN, IRO-QUOIS, CHI-CAGOAN, N. Y. SPL., 5th AVE. SPL., WOLV-ERINE, NEW ENG. STATES, COMM. V'BILT, 20th CENTURY, PACE-MAKER, CHI-CAGOAN. Includes times for New York, Boston, Springfield, Chicago.

★—20th Century Limited-De Luxe All Pullman

B—On Sundays arrives Boston 10:30 P.M.

R—Coach Seats Reserved.

NEW YORK—BOSTON—CLEVELAND

Table with columns for stations: EMPIRE STATE, KNICKER-BOCKER, CLEVE. LTD., NORTH STAR, CHI-CAGOAN, IRO-QUOIS, CHI-CAGOAN, KNICKER-BOCKER, CHI-CAGOAN, EMPIRE STATE, 5th AVE. SPL., CLEVE. LTD., NEW ENG. STATES. Includes times for New York, Boston, Springfield, Cleveland.

RP—Coach and Parlor Car Seats Reserved.

R—Coach Seats Reserved.

A—Boston connection operates except Sunday.

B—On Sundays arrives Boston 10:30 P.M.

NEW YORK—BOSTON—DETROIT

Table with columns for stations: EMPIRE STATE, WOLV-ERINE, DETROITER, EMPIRE STATE, N. Y. SPL., DETROITER. Includes times for New York, Boston, Springfield, Detroit.

RP—Coach and Parlor Car Seats Reserved. A—Boston connection operates except Sunday. R—Coach Seats Reserved.

NEW YORK—BOSTON—TORONTO

Table with columns for stations: DE WITT CLINTON, CLEVE. LTD., NORTH STAR, TUSCA-RORA, CHI-CAGOAN, DE WITT CLINTON, OHIO STATE. Includes times for New York, Boston, Springfield, Toronto.

A—On Sundays arrives New York 11:30 P.M.

BOSTON—BUFFALO

Table with columns for stations: EMPIRE STATE, BERK-SHIRE, NEW ENG. STATES, INT. STATE, IRO-QUOIS, BERK-SHIRE, CHI-CAGOAN, CHI-CAGOAN, INT. STATE. Includes times for Boston, Buffalo.

RP—Coach and Parlor Car Seats Reserved.

R—Coach Seats Reserved.

FOR COMPLETE DETAILS AND INTERMEDIATE SERVICE SEE CONDENSED AND DETAILED TABLES IMMEDIATELY FOLLOWING.

NEW YORK—MONTREAL

Table with columns for stations: LAURENTIAN, MONT. LTD., LAURENTIAN, MONT. LTD. Includes times for New York, Montreal.

NEW YORK—BOSTON—COLUMBUS—DAYTON—CINCINNATI

Table with columns for stations: CLEVE. LTD., OHIO STATE, OHIO STATE, CHI-CAGOAN. Includes times for New York, Boston, Columbus, Dayton, Cincinnati.

B—On Sundays arrives Boston 10:30 P.M.

NEW YORK—BOSTON—CLEVELAND—INDIANAPOLIS—ST. LOUIS

Table with columns for stations: CLEVE. LTD., KNICK. BOCKER, KNICK. BOCKER, CLEVE. LTD. Includes times for New York, Boston, Cleveland, Indianapolis, St. Louis.

A—Operates Daily Cleveland—St. Louis. B—On Sundays arrives New York 8:45 A.M.

QUICK REFERENCE TIME TABLES

NEW YORK—ALBANY—SYRACUSE—ROCHESTER—BUFFALO

Table with columns for stations: Westbound, DE WITT CLINTON, EMPIRE STATE, NO. SHORE, KNICK. BOCKER, OHIO STATE, HEN-DRICK HUDSON, WOLV-ERINE, CLEVE. LTD., NORTH STAR, CHI-CAGOAN, IRO-QUOIS, CHI-CAGOAN, TUSCA-RORA, SOUTH SHORE. Includes times for New York, Albany, Syracuse, Rochester, Buffalo.

R—All Coach and Parlor Seats Reserved.

BUFFALO—ROCHESTER—SYRACUSE—ALBANY—NEW YORK

Table with columns for stations: Eastbound, HEN-DRICK HUDSON, UP-STATE SPL., PACE-MAKER, MO-HAWK, CHI-CAGOAN, LAURENTIAN, EMPIRE STATE, DE WITT CLINTON, EAST-ERN, EAST-ERN, NEW YORK SPL., 5th AVE. SPL., CLEVE. LTD., WOLV-ERINE, OHIO STATE. Includes times for Buffalo, Rochester, Syracuse, Albany, New York.

A—On Sundays Arrives New York 11:30 P.M.

C—Coach Seats Reserved.

R—Coach and Parlor Seats Reserved.

CHICAGO—TOLEDO—CLEVELAND

Table with columns for stations: 5th AVE. SPL., NEW ENG. STATES, PACE-MAKER, CHI-CAGOAN, CHI-CAGOAN, IRO-QUOIS, PRAIRIE STATE, FOREST CITY. Includes times for Chicago, Toledo, Cleveland.

R—All Coach and Parlor Seats Reserved.

CHICAGO—DETROIT

Table with columns for stations: MERCURY, N. Y. SPL., WOLV-ERINE, TWI-LIGHT, NIA-GARA, MOTOR CITY, NORTH SHORE, WOLV-ERINE, MERCURY, MICH-IGAN, TWI-LIGHT, MOTOR CITY. Includes times for Chicago, Detroit.

R—All Coach and Parlor Car Seats Reserved.

CLEVELAND—COLUMBUS—SPRINGFIELD—DAYTON—CINCINNATI

Table with columns for stations: MID-WEST-ERN, CINTI. SPL., CAP'L SPL., MID-NIGHT SPL., CAP'L SPL., STATE SPL., MID-WEST-ERN, NIGHT SPL. Includes times for Cleveland, Columbus, Springfield, Dayton, Cincinnati.

CHICAGO—INDIANAPOLIS—CINCINNATI

Table with columns for stations: MID-WEST-ERN, CAR. SPL., RILEY, ROYAL PALM. Includes times for Chicago, Indianapolis, Cincinnati.

Table with columns for stations: RILEY, BOOTH TAR., MID-WEST-ERN, ROYAL PALM. Includes times for Chicago, Indianapolis, Cincinnati.

R—All Coach and Parlor Seats Reserved.

For complete details and intermediate service see condensed and detail tables immediately following.







CONDENSED TIME TABLE

Table No. 1

Table No. 1: CHICAGO-NEW YORK and BOSTON. EASTBOUND. Columns include route names (e.g., CHICAGO, Toledo, Cleveland, Buffalo), departure times, and service notes.

Table No. 1: WESTBOUND. Columns include route names (e.g., ALBANY, Buffalo, Cleveland, New York), arrival times, and service notes.

For Explanation of Reference Marks, see Page 10

For Pullman, Coach and Dining Car Service, see Pages 38-43

CONDENSED TIME TABLE

Table No. 2 MICHIGAN POINTS and DETROIT NEW YORK and BOSTON

Table No. 2: EASTBOUND. Columns include route names (e.g., CHICAGO, Kalamazoo, Detroit, Buffalo), departure times, and service notes.

Table No. 2: WESTBOUND. Columns include route names (e.g., ALBANY, Buffalo, Detroit, New York), arrival times, and service notes.

For explanation of Reference Marks, see Page 10.

CONDENSED TIME TABLE

Table No. 2A TORONTO-NEW YORK and BOSTON

Table No. 2A: EASTBOUND. Columns include route names (e.g., TORONTO, Buffalo, Albany, New York), departure times, and service notes.

Table No. 2A: WESTBOUND. Columns include route names (e.g., NEW YORK, Buffalo, Albany, Toronto), arrival times, and service notes.

Go DAYLIGHT or OVERNIGHT between TORONTO and NEW YORK. BY DAY—your through coach leaves Toronto at 10:50 A.M. (ET). BY NIGHT—board your through Pullman at 8:30 P.M. (ET) and step off next morning in Grand Central Terminal, New York.

For Pullman, Coach and Dining Service, see Pages 38 to 43



CONDENSED TIME TABLE

Table No. 3

CINCINNATI-DAYTON-COLUMBUS-CLEVELAND-BUFFALO, BOSTON AND NEW YORK

Table No. 3: Condensed time table for Cincinnati-Dayton-Columbus-Cleveland-Buffalo, Boston and New York. Includes Eastbound and Westbound routes with various service types like Capital City Special, State Special, Ohio State Limited, etc.

EXPLANATION OF REFERENCE MARKS

Tables 1-2-2A-3-4-5-6

- List of reference marks: ♦ This train does not carry checked baggage, ♣ Will not carry baggage on Sunday, & Stops on signal to receive or discharge revenue passengers, † Daily except Sunday, h Stops regularly but only to receive passengers, i Stops regularly but only to discharge passengers, A Stops regularly to discharge passengers, also to receive passengers for Harmon and New York, B Stops regularly to receive passengers, also discharge passengers from Harmon and New York, C Stops regularly to discharge revenue passengers from points beyond Albany, or to receive revenue passengers for points beyond Buffalo, E Stops on signal to receive revenue passengers for points beyond Albany, F Will not operate Nov. 28, 29; Dec. 22, 23, 24, 29, 30 or 31, G Stops on signal to discharge revenue passengers only, H Stops on signal to receive revenue passengers for points beyond Buffalo, J Stops on signal to receive revenue passengers for Toledo and beyond, K Stops on signal to receive revenue passengers for Albany and beyond, L Stops on signal to receive revenue passengers only, M On Sundays arrives New York 11:30 P.M., P On Sundays leaves Albany 5:15 P.M. arrives Boston 10:30 P.M. (ET), R Stops on signal to receive revenue passengers for Buffalo and beyond, S All coach seats reserved, W Stops on signal to discharge revenue passengers from St. Louis, or to receive revenue passengers for Indianapolis and beyond, X Stops on signal to receive or discharge revenue passengers Sunday and Monday mornings only, Y Stops on signal to discharge revenue passengers from Cleveland and beyond, Z Stops on signal to discharge revenue passengers from Cleveland and beyond, or to receive revenue passengers for St. Louis, AA Will not operate from New York Nov. 28, 29; Dec. 22, 23, 24, 29, 30 or 31, passengers use Train 29 which will also run those dates, leaving New York 11:05 P.M. (ET), CC Stops on signal to discharge revenue passengers from beyond Buffalo.

For Pullman, Coach and Dining Car Service, see Pages 38 to 43

CONDENSED TIME TABLE

Table No. 4

ST. LOUIS-INDIANAPOLIS-CLEVELAND-BUFFALO, BOSTON AND NEW YORK

Table No. 4: Condensed time table for St. Louis-Indianapolis-Cleveland-Buffalo, Boston and New York. Includes Eastbound and Westbound routes with various service types like The Southwestern, The Knickerbocker, The Missourian, etc.

ST. LOUIS, CHICAGO, INDIANAPOLIS-WASHINGTON and NORFOLK

(Via Cincinnati and Chesapeake and Ohio Ry.)

Table No. 5: Condensed time table for St. Louis, Chicago, Indianapolis, Washington and Norfolk. Includes routes via Cincinnati and Chesapeake and Ohio Ry.

NOTE—Passengers to or from Hot Springs holding tickets to or from Thurmond, W. Va. and beyond, upon application to Conductor will be provided with ticket for limousine service from Covington, Va. to Hot Springs, and upon application at Hot Springs will be provided with limousine service to Covington, Va.

For explanation of Reference Marks, see Page 10

CHICAGO-RICHMOND and NORFOLK

(Via Toledo and Chesapeake and Ohio Ry.)

Table No. 6: Condensed time table for Chicago-Richmond and Norfolk. Includes routes via Toledo and Chesapeake and Ohio Ry.

For Pullman, Coach and Dining Car Service, see Pages 38 to 43



CHICAGO (La Salle Street Station), SOUTH BEND, TOLEDO and CLEVELAND to BUFFALO

Table No. 7

Table No. 7: Train schedule from Chicago to Buffalo. Columns include station names (Chicago, South Bend, Toledo, Cleveland, Buffalo) and times for various services (Daily, Ex. Sun., Sun. only). Includes notes like 'CLEVELAND LIMITED' and 'THE CHICAGOAN'.

EXPLANATION OF REFERENCE MARKS

- ◆ This train does not carry checked baggage.
↓ Stops on signal to receive or discharge revenue passengers only.
h Stops only to receive passengers.
A Stops on signal to receive revenue passengers for Toledo and beyond.
B Stops on signal to receive revenue passengers for Albany and beyond.
C Stops on signal to receive revenue passengers for Buffalo and beyond, or to discharge revenue passengers from Chicago.

- E Stops on signal to discharge revenue passengers from Chicago or beyond or to receive revenue passengers for Toledo or beyond.
G Stops on signal to discharge revenue passengers.
L Stops on signal to receive revenue passengers.
NCB No facilities for handling baggage at this station. Baggage should be checked to or from nearest station where facilities are available.

For Pullman, Coach and Dining Car Service, see Pages 38 to 43

BUFFALO, CLEVELAND, TOLEDO and SOUTH BEND to (La Salle St. Station) CHICAGO

Table No. 8

Table No. 8: Train schedule from Buffalo to Chicago. Columns include station names (Buffalo, Toledo, Cleveland, South Bend, Chicago) and times for various services. Includes notes like 'THE COMMODORE VANDERBILT' and 'THE CHICAGOAN'.

EXPLANATION OF REFERENCE MARKS

- ◆ This train does not carry checked baggage.
i Stops only to discharge passengers.
A Stops on signal to discharge revenue passengers from Toledo and beyond, or to receive revenue passengers for Chicago.
B Stops on signal to discharge revenue passengers from Toledo and beyond.

- G Stops on signal to discharge revenue passengers.
L Stops on signal to receive revenue passengers.
NCB No facilities for handling baggage at this station. Baggage should be checked to or from nearest station where facilities are available.

For Pullman, Coach and Dining Car Service, see Pages 38 to 43



CHICAGO (LaSalle St. Station) and DETROIT to NIAGARA FALLS and BUFFALO

Table No. 9: Train schedule from Chicago to Detroit, Niagara Falls, and Buffalo. Includes columns for miles, departure times, and service types like 'The Wolverine' and 'Motor City Special'.

EXPLANATION OF REFERENCE MARKS

- Stops on signal to receive or discharge revenue passengers only. Operates daily Except Sunday. Stops only to receive passengers. Stops on signal to receive revenue passengers for Niles and beyond. Motor bus between Welland and Niagara Falls. Railroad tickets are accepted on bus. Baggage checked to or from Suspension Bridge and Niagara Falls, N. Y. will be handled via Buffalo. Stops on signal Fridays, Saturdays and Sundays only, to discharge revenue passengers from Chicago or to receive revenue passengers for Detroit and beyond. Stops on signal to discharge revenue passengers from Chicago or to receive revenue passengers for Buffalo and beyond. Stops on signal to discharge revenue passengers from Welland and beyond. Stops on signal to discharge revenue passengers from Chicago. Stops on signal to discharge revenue passengers. Stops on signal except Saturdays, and holidays to receive revenue passengers for Detroit and beyond. Stops on signal to receive revenue passengers for Buffalo and beyond. Stops on signal to discharge revenue passengers, or to receive revenue passengers for Buffalo and beyond. Stops on signal to discharge revenue passengers from Chicago or to receive revenue passengers for Detroit and beyond. Stops on signal to discharge revenue passengers from Windsor and beyond. No facilities for handling baggage at this station. Baggage should be checked to or from nearest station where facilities are available. Stops on signal to discharge revenue passengers from Windsor and beyond or to receive revenue passengers for Buffalo and beyond. Stops on signal to discharge revenue passengers from St. Thomas and beyond. Stops on signal to discharge revenue passengers from St. Thomas and beyond or to receive revenue passengers for Buffalo and beyond.

For Pullman, Coach and Dining Car Service, See Pages 38 to 43.

BUFFALO—NIAGARA FALLS and DETROIT to (LaSalle St. Station) CHICAGO

Table No. 10: Train schedule from Buffalo, Niagara Falls, and Detroit to Chicago. Includes columns for miles, departure times, and service types like 'The Wolverine' and 'Motor City Special'.

EXPLANATION OF REFERENCE MARKS

- Stops on signal to receive or discharge revenue passengers only. Operates daily except Sunday. Stops on signal to receive or discharge passengers. Stops only to discharge passengers. Motor bus between Welland and Niagara Falls. Railroad tickets are accepted on bus. Baggage checked to or from Suspension Bridge and Niagara Falls, N. Y. will be handled via Buffalo. Stops on signal to discharge revenue passengers from Buffalo and beyond or to receive revenue passengers for Hamilton and Toronto. Stops on signal to discharge revenue passengers from Albany and beyond. Stops on signal to discharge revenue passengers from beyond St. Thomas, or to receive revenue passengers for Windsor and beyond. Stops on signal to receive revenue passengers for Hamilton and Toronto. Stops on signal to receive revenue passengers for St. Thomas and beyond. Stops on signal to discharge revenue passengers from Detroit and beyond, or to receive revenue passengers for Chicago and beyond. Stops on signal to discharge revenue passengers from points beyond Detroit. Stops on signal to discharge revenue passengers from Niles and beyond. Stops on signal to discharge revenue passengers from Kalamazoo and beyond, or to receive revenue passengers for Chicago and beyond. No facilities for handling baggage at this station. Baggage should be checked to or from nearest station where facilities are available. Stops on signal to discharge revenue passengers from Detroit and beyond.

For Pullman, Coach and Dining Car Service, see Pages 38 to 43.



Table No. II BUFFALO—ROCHESTER—SYRACUSE—UTICA and ALBANY to NEW YORK

Table with columns for stations (Niagara Falls, Buffalo, Rochester, Syracuse, Utica, Albany, New York) and times for various train services (804-62, 136, 192, 180, 166, 194, 174, 154, 138, 2, 78, 854-254, 162, 832-226, 40, 158, 90, 134).

EXPLANATION OF REFERENCE MARKS

- ◆ This train does not carry checked baggage.
† Daily except Sunday.
△ In addition to the train service shown, buses of the United Traction Company run at frequent intervals between Albany and Troy.
① Frequent all year ferry service between Beacon (adjacent to railroad station) and Newburgh. Fare 15¢. Railroad tickets not accepted on ferry.
② Bus service operated by Kelsey Bus Line, Inc., between Hudson railroad Station and Catskill. Fare 40¢. Railroad tickets not accepted on bus.
d Passengers for beyond Harmon change trains at that point. No checked baggage handled.
i Stops only to discharge passengers.
u By connecting train.
A Stops on signal to discharge revenue passengers from Albany and beyond.
B Sunday only Bus service.
K Stops to discharge passengers; and to receive revenue passengers only.
P Stops daily except Sundays and Holidays.
R Stops Fridays only.
T Stops daily except Saturdays and Sundays.

For Pullman, Coach and Dining Car Service, see Pages 38 to 43

Table No. II (CONTINUED) BUFFALO—ROCHESTER—SYRACUSE—UTICA and ALBANY to NEW YORK

Table with columns for stations (Niagara Falls, Buffalo, Rochester, Syracuse, Utica, Albany, New York) and times for various train services (361-716, 638, 198, 50, 96, 94, 152, 52, 44, 6, 62, 46, 58, 28, 8, 48, 16, 68, 26).

EXPLANATION OF REFERENCE MARKS

- ◆ This train does not carry checked baggage.
† Daily except Saturday.
† Except Sunday.
△ In addition to the train service shown, buses of the United Traction Company run at frequent intervals between Albany and Troy.
① Frequent all year ferry service between Beacon (adjacent to railroad station) and Newburgh. Fare 15¢. Railroad tickets not accepted on ferry.
② Bus service operated by Kelsey Bus Lines, Inc., between Hudson railroad Station and Catskill. Fare 40¢. Railroad tickets not accepted on bus.
d Passengers for beyond Harmon change trains at that point. No checked baggage handled.
i Stops only to discharge passengers.
A Stops regularly to discharge passengers, also to receive for Harmon and New York.
B Stops on signal Saturdays only to discharge revenue passengers.
D Stops on signal to discharge revenue passengers from beyond Buffalo.
E Friday and Sunday only Bus Service.

For Pullman, Coach and Dining Car Service, see Pages 38 to 43.



Table No. 12 NEW YORK—ALBANY—UTICA—SYRACUSE and ROCHESTER to BUFFALO

Table with columns for Miles, Station, and various train services (Ex. Sun., Sun. Only, Sat. & Sun. Note, Daily). Includes stations like New York, Albany, Utica, Syracuse, Rochester, and Buffalo.

EXPLANATION OF REFERENCE MARKS

- ◆ This train does not carry checked baggage.
† Daily except Sunday.
△ Buses of the United Traction Company run at frequent intervals between Albany and Troy.
① Frequent all year ferry service between Beacon (adjacent to railroad station) and Newburgh. Fare 15¢. Railroad tickets not accepted on ferry.
③ Bus service operated by Kelsey Bus Line, Inc., between Hudson railroad station and Catskill. Fare 40¢. Railroad tickets not accepted on bus.
c By connecting "BEELINER" service from Harmon. No checked baggage handled.
h Stops only to receive passengers.
i Stops only to discharge passengers.
A Stops regularly to receive passengers; also discharge from Harmon and New York.
B Friday only Bus Service.
E Stops Sundays only to discharge passengers.
F Stops on signal Fridays only to discharge revenue passengers.
H Stops on signal to receive revenue passengers for points beyond Buffalo.
L Stops on signal to receive revenue passengers.

For Pullman, Coach and Dining Car Service, see Pages 38 to 43

Table No. 12 NEW YORK—ALBANY—UTICA—SYRACUSE and ROCHESTER to BUFFALO (CONTINUED)

Continuation of Table No. 12, showing stations from Buffalo back to New York, including Albany, Utica, Syracuse, Rochester, and New York.

EXPLANATION OF REFERENCE MARKS

- ◆ This train does not carry checked baggage.
♣ Does not carry checked baggage on Sundays.
△ Buses of the United Traction Company run at frequent intervals between Albany and Troy.
① Frequent all year ferry service between Beacon (adjacent to railroad station) and Newburgh. Fare 15¢. Railroad tickets not accepted on ferry.
③ Bus service operated by Kelsey Bus Lines, Inc., between Hudson railroad station and Catskill. Fare 40¢. Railroad tickets not accepted on bus.
c By connecting "BEELINER" service from Harmon. No checked baggage handled.
h Stops only to receive passengers.
i Stops only to discharge passengers.
A Stops Sundays only.
B Stops on signal Fridays only to discharge revenue passengers.
F Stops on signal to receive revenue passengers for points beyond Albany.
G Stops on signal to discharge revenue passengers.
H Stops on signal to receive revenue passengers for Albany and beyond.
J Stops regularly to discharge revenue passengers for points beyond Albany or to receive revenue passengers for points beyond Buffalo.
L Stops on signal to receive revenue passengers.
P Stops on signal to receive revenue passengers for points beyond Albany, also stops Sunday mornings to discharge revenue passengers.
Z Stops Saturdays only.

For Pullman, Coach and Dining Car Service, See Pages 38 to 43.



ALBANY, PITTSFIELD and SPRINGFIELD to WORCESTER and BOSTON

Table No. 13

Table No. 13: Train schedule from Albany, Pittsfield, and Springfield to Worcester and Boston. Columns include station names, train types (e.g., Bee-Liner, Bee-Liner), and departure/arrival times.

NEW YORK to WORCESTER—BOSTON—Via connecting trains from Springfield

Table No. 14

Table No. 14: Train schedule from New York to Worcester and Boston via Springfield. Columns include station names, train types, and departure/arrival times.

EXPLANATION OF REFERENCE MARKS Pages 20-21. This train does not carry checked baggage. Stops on signal to receive or discharge revenue passengers.

For Pullman, Coach and Dining Car Service, see Pages 38 to 43.

BOSTON, WORCESTER, SPRINGFIELD and PITTSFIELD to ALBANY

Table No. 15

Table No. 15: Train schedule from Boston, Worcester, Springfield, and Pittsfield to Albany. Columns include station names, train types, and departure/arrival times.

BOSTON and WORCESTER to NEW YORK—Via connecting trains from Springfield

Table No. 16

Table No. 16: Train schedule from Boston and Worcester to New York via Springfield. Columns include station names, train types, and departure/arrival times.

For explanation of Reference Marks, see Page 20.

For Pullman, Coach and Dining Car Service, see pages 38 to 43.



ST. LOUIS to TERRE HAUTE, INDIANAPOLIS and CLEVELAND

Table No. 17

Table with columns for Miles, (EASTBOUND), and departure times for routes to Terre Haute, Indianapolis, and Cleveland.

CLEVELAND to INDIANAPOLIS, TERRE HAUTE and ST. LOUIS

Table with columns for Miles, (WESTBOUND), and departure times for routes from Cleveland to Indianapolis, Terre Haute, and St. Louis.

ST. LOUIS and TERRE HAUTE to CINCINNATI

Table No. 18

CINCINNATI to TERRE HAUTE and ST. LOUIS

Table with columns for Miles, (EASTBOUND), and departure times for routes from St. Louis and Terre Haute to Cincinnati.

Table with columns for Miles, (WESTBOUND), and departure times for routes from Cincinnati to Terre Haute and St. Louis.

EXPLANATION OF REFERENCE MARKS

- List of reference marks A through P explaining symbols used in the timetables.

For Pullman, Coach and Dining Car Service, see Pages 38 to 43

ST. LOUIS and INDIANAPOLIS to TOLEDO and DETROIT

Table No. 19

DETROIT and TOLEDO to INDIANAPOLIS and ST. LOUIS

Table with columns for Miles, (EASTBOUND), and departure times for routes from St. Louis and Indianapolis to Toledo and Detroit.

Table with columns for Miles, (WESTBOUND), and departure times for routes from Detroit and Toledo to Indianapolis and St. Louis.

EXPLANATION OF REFERENCE MARKS

- List of reference marks A through L explaining symbols used in the timetables.

TRAVELING WITH BABY IS CHILD'S PLAY ON THE CENTRAL

New York Central nursery facilities make traveling with little ones easier. These stations have an Infants' Annex adjoining the Women's Rest Room with all the conveniences you'll need for your child's comfort and care.



NEW YORK Grand Central Station, INDIANAPOLIS Union Station, DETROIT Michigan Central Station, BOSTON South Station, CHICAGO LaSalle Street Station, ST. LOUIS Union Station.

For Pullman, Coach and Dining Car Service, see Pages 38 to 43

When Away From Home . . .

remember this symbol of help for all travelers and newcomers in trouble. You will find the Travelers Aid lamp in all major rail terminals. Travelers Aid is a social service supported by voluntary contributions through Community Chests and United Funds.



Along the New York Central Travelers Aid is in—

- List of cities where Travelers Aid is available: ALBANY, BOSTON, BUFFALO, CHICAGO, CINCINNATI, CLEVELAND, COLUMBUS, DAYTON, DETROIT, ERIE, GAND RAPIDS, INDIANAPOLIS, MONTREAL, NEW YORK, NIAGARA FALLS, ROCHESTER, ST. LOUIS, SCHENECTADY, SPRINGFIELD, SYRACUSE, TOLEDO, UTICA, WORCESTER.



... safe, swift, sure





The New York Central System operates approximately 11,000 miles of railroad in eleven states and Canada in the great commercial and industrial area between the Atlantic Seaboard and the Mississippi Valley, providing the highest type of passenger and freight service



CINCINNATI to INDIANAPOLIS and CHICAGO

Table No. 21

CHICAGO to INDIANAPOLIS and CINCINNATI

Table with columns for (WESTBOUND) and (EASTBOUND) routes, including stations like Cincinnati, Indianapolis, and Chicago, with arrival and departure times.

EXPLANATION OF REFERENCE MARKS

- h Stops only to receive passengers.
i Stops only to discharge revenue passengers.
A Stops Sundays and Holidays to receive or discharge revenue passengers.
B Stops on signal to discharge revenue passengers from Indianapolis and beyond.
C Stops on signal to receive or discharge revenue passengers for or from Chicago and beyond.
NCB No facilities for handling baggage at this station. Baggage should be checked to or from nearest station where facilities are available.
D Stops daily except Sundays and Holidays to receive revenue passengers for Fowler and beyond; on Sundays and Holidays stops to receive revenue passengers for Beaverville and beyond.
E Stops to receive revenue passengers for Lafayette and beyond.
F Stops to receive revenue passengers for Fowler and beyond.

CHICAGO-ASHEVILLE GREENSBORO CHARLESTON

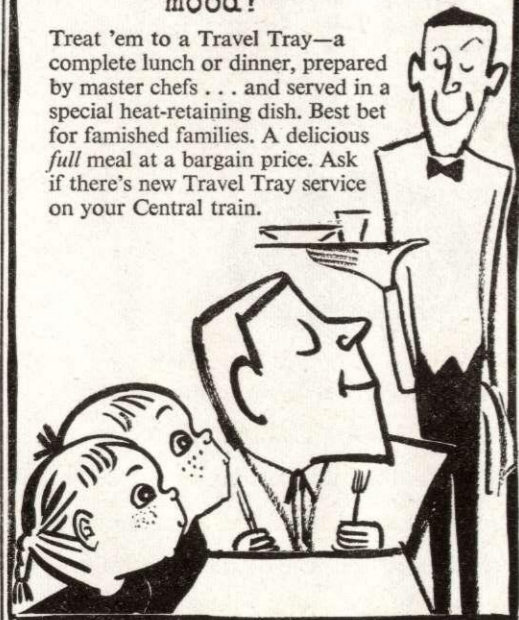
(Via Cincinnati and Southern Railway)

Table No. 22 showing train schedules between Chicago, Asheville, Greensboro, and Charleston via Cincinnati and Southern Railway.

Advertisement for 'NOW SHOWING' featuring a woman's face and the text 'WHAT'S NEW IN NEW YORK? Get FREE list of this month's doings... Know what's new in New York? Read The New York Visitor...'.

Your brood in a food mood?

Treat 'em to a Travel Tray—a complete lunch or dinner, prepared by master chefs... and served in a special heat-retaining dish. Best bet for famished families. A delicious full meal at a bargain price. Ask if there's new Travel Tray service on your Central train.



For Pullman, Coach and Dining Car Service, see Pages 38 to 43

CINCINNATI to DAYTON, COLUMBUS and CLEVELAND

Table No. 23

CLEVELAND to COLUMBUS, DAYTON and CINCINNATI

Table with columns for (EASTBOUND) and (WESTBOUND) routes, including stations like Cincinnati, Dayton, Columbus, and Cleveland, with arrival and departure times.

CINCINNATI-DAYTON-TOLEDO-DETROIT

Table No. 24

Table with columns for (NORTHBOUND) and (SOUTHBOUND) routes, including stations like Cincinnati, Dayton, Toledo, and Detroit, with arrival and departure times.

For Pullman, Coach and Dining Car Service, see Pages 38 to 43

CLEVELAND-COLUMBUS-DAYTON INDIANAPOLIS-CHICAGO (Via Cincinnati)

Table No. 23 A

Table with columns for 421 Daily Read Down and 416 Daily Read Up routes, including stations like Cleveland, Columbus, Dayton, Indianapolis, and Chicago via Cincinnati.

EXPLANATION OF REFERENCE MARKS

- ♦ This train does not carry checked baggage.
A Stops on signal to receive or discharge revenue passengers only.
B Stops on signal to receive revenue passengers for Cincinnati, or to discharge revenue passengers from Cleveland and beyond.
D Stops on signal to receive revenue passengers for Buffalo and beyond.
G Stops on signal to discharge revenue passengers only.
H Stops on signal to discharge revenue passengers from Toledo and beyond.
L Stops on signal to receive revenue passengers only.



CHICAGO—TORONTO—MONTREAL—QUEBEC

(Via Detroit and Canadian Pacific Railway)

Table No. 25: Train schedule for Chicago-Toronto-Montreal-Quebec route. Includes columns for train numbers (316, 358, 376, 39, 31, 315, 315), days, and times for various stations like Chicago, Detroit, Toronto, Montreal, and Quebec.

CHICAGO—LANSING—SAGINAW—BAY CITY

(Via Jackson)

Table No. 27: Train schedule for Chicago-Lansing-Saginaw-Bay City route. Includes columns for train numbers (358, 351, 352), days, and times for stations like Chicago, Jackson, Lansing, Saginaw, and Bay City.

CLEVELAND—CLIFTON FORGE—NORFOLK

(Via Columbus and Chesapeake & Ohio Ry.) Through Sleeping Car Cleveland-Clifton Forge Daily except Saturday

Table No. 28: Train schedule for Cleveland-Clifton Forge-Norfolk route. Includes columns for train numbers (445, 442), days, and times for stations like Cleveland, Clifton Forge, and Norfolk.

Note.—Passengers to or from Hot Springs holding tickets to or from Thurmond, W. Va., and beyond, upon application to Conductor will be provided without charge with ticket for limousine service from Covington, Va. to Hot Springs, and upon application at Hot Springs will be provided with limousine service to Covington, Va.

DETROIT—TOLEDO—CLEVELAND

Table No. 30: Train schedule for Detroit-Toledo-Cleveland route. Includes columns for train numbers (303, 761, 309), days, and times for stations like Detroit, Toledo, Cleveland, and Bay City.

GRAND RAPIDS—DETROIT—BUFFALO—NEW YORK—BOSTON

Table No. 31: Train schedule for Grand Rapids-Detroit-Buffalo-New York-Boston route. Includes columns for train numbers (628, 625), days, and times for stations like Grand Rapids, Detroit, Buffalo, New York, and Boston.

BUFFALO—NIAGARA FALLS

Table No. 32: Train schedule for Buffalo-Niagara Falls route. Includes columns for train numbers (681, 217, 207, 683, 685, 687), days, and times for stations like Buffalo, Niagara Falls, and Suspension Bridge.

DETROIT—SAGINAW—BAY CITY—MACKINAW CITY

Table No. 33: Train schedule for Detroit-Saginaw-Bay City-Mackinaw City route. Includes columns for train numbers (337, 633, 338, 634), days, and times for stations like Detroit, Saginaw, Bay City, and Mackinaw City.

EXPLANATION OF REFERENCE MARKS: ♦ Does not carry checked baggage. ▲ Stops on signal to receive or discharge revenue passengers only. † Stops daily except Sunday. B Stops on signal to receive or discharge revenue passengers for or from Detroit. C Stops on signal to discharge revenue passengers from Detroit and receive revenue passengers for Saginaw and beyond. D Stops on signal to receive or discharge revenue passengers for or from Bay City and beyond. E Stops on signal to discharge revenue passengers from Saginaw and beyond, or to receive revenue passengers for Detroit. G Stops on signal to discharge revenue passengers only. H Stops on signal to discharge revenue passengers from beyond Suspension Bridge.

CINCINNATI—CLEVELAND—HAMILTON—TORONTO

Table No. 26: Train schedule for Cincinnati-Cleveland-Hamilton-Toronto route. Includes columns for train numbers (416, 444, 445, 421), days, and times for stations like Cincinnati, Cleveland, Hamilton, and Toronto.

EXPLANATION OF REFERENCE MARKS

♦ This train does not carry checked baggage. † Daily except Sunday. ‡ Daily except Saturday. ▲ Stops on signal to receive or discharge revenue passengers only. f Stops on signal to receive or discharge passengers. h Stops only to receive passengers. i Stops only to discharge passengers. A On Sunday mornings arrives Detroit 6:55 A.M. B On Sunday mornings leaves Buffalo 6:10 A.M., arrive Hamilton 8:15 A.M., arrive Toronto 9:30 A.M. S All seats reserved and assigned in advance.

CLEVELAND—ROANOKE—NORFOLK

(Via Columbus and Norfolk & Western Railway)

Table No. 29: Train schedule for Cleveland-Roanoke-Norfolk route. Includes columns for train numbers (445, 444), days, and times for stations like Cleveland, Roanoke, and Norfolk.

For Pullman, Coach and Dining Car Service see pages 38 to 43

"Tell him about the free side trip -- to the falls' big Fall and Winter Show!" Advertisement for Niagara Falls featuring an illustration of a man and woman and a view of the falls.

For Pullman, Coach and Dining Car Service, see Pages 38 to 43



BUFFALO—WELLAND—HAMILTON—TORONTO

Table No. 34

Table with columns for Buffalo, Welland, Hamilton, Toronto and times for various routes (Canadian Pacific Ry., T. H. & B. Ry., Motor Bus).

Table with columns for Hamilton, Welland, Toronto and times for various routes (Canadian Pacific Ry., T. H. & B. Ry., Motor Bus).

EXPLANATION OF REFERENCE MARKS

- Does not carry checked baggage. Stops on signal to receive or discharge passengers. Stops only to receive passengers. Stops only to discharge passengers. Stops on signal to discharge revenue passengers from Buffalo and beyond...

WESTFIELD—CHAUTAQUA JAMESTOWN (Via Chautauqua Transit)

Table No. 35: Schedule for Westfield, Chautauqua, Jamestown routes.

NEW YORK—PAWLING—MILLERTON—HILLSDALE—CHATHAM

(See Harlem Division Time Tables for Local Service, including Dining Car Service)

Table No. 36: Schedule for New York, Pawling, Millerton, Hillsdale, Chatham routes.

For Pullman, Coach and Dining Car Service, see Pages 38 to 43

For A Holiday In EARLIER AMERICA Visit Greenfield Village Dearborn - Mich. SEE ...



Full-sized locomotives; 170 antique cars; the Laboratory where Edison discovered the electric light; Craft Shops from yesteryear in operation; a Mississippi River steamboat; the homes of Luther Burbank, William Holmes McGuffey, the Wright Brothers and Noah Webster; covered wagons and carriages; the aircraft used by Admiral Byrd to discover the North and South Pole; pioneer farm tools and rare antique silver, glass and furniture.

Open the year around and located just 10 miles from downtown Detroit. Convenient bus service from Michigan Central Station—Inquire of Information Bureau.

Table No. 37

NEW YORK, ALBANY, UTICA and SYRACUSE—CARTHAGE, WATERTOWN, OGDENSBURG and MASSENA

(See Local St. Lawrence Division Time Table for Complete Service)

Table No. 37: Schedule for New York, Albany, Utica, Syracuse, Carthage, Watertown, Ogdensburg, Massena routes.

Table No. 37: Schedule for Southbound routes (St. Lawrence Div., Ogdensburg, Watertown, Carthage, Syracuse, Utica, Massena).

"Big deals on wheels" take their wives ... their wives ... Make business trips a real pleasure! Take your wife (she travels one way free if you buy a round-trip ticket) ... and step off into a rental car. Make your calls ... then turn on pages 2 and 3. ... AND HAVE A RENTAL CAR WAITING



SYRACUSE—OSWEGO Via Bus

Table No. 39: Schedule for Syracuse-Oswego via bus.

WATERTOWN—CLAYTON via Bus

Table No. 40: Schedule for Watertown-Clayton via bus.

WATERTOWN—OGDENSBURG via Bus

Table No. 41: Schedule for Watertown-Ogdensburg via bus.

EXPLANATION OF REFERENCE MARKS

- This train does not carry checked baggage. Stops on signal to receive or discharge revenue passengers. Stops on signal to receive or discharge passengers. Stops only to receive passengers. Will not operate from New York Nov. 28, 29; Dec. 22, 23, 24, 29, 30 or 31; passengers use Train 21 which will also run on those dates leaving New York 8:30 P.M. Via connecting Limousine service between Ogdensburg and Canton daily except Sundays and Holidays. Railroad ticket from or to Ogdensburg only accepted on Limousine. All seats reserved and assigned in advance.

For Pullman, Coach and Dining Car Service, see Pages 38 to 43



NEW YORK, BOSTON, CHICAGO, BUFFALO and the ADIRONDACKS (See Adirondack Division Time Table for Complete Service)

Table No. 42. Schedule for New York, Boston, Chicago, Buffalo and the Adirondacks. Includes routes to Albany, Utica, and various Adirondack locations.

THE BAGGAGE YOU TAKE ON THE TRAIN TRAVELS FREE. Illustration of a bear with luggage. Text: The personal luggage you carry gets a free trip on the Central—is never out of reach, and avoids delay at your destination.

Pittsburgh—Cleveland—Toledo—Detroit—Chicago (Via Pittsburgh & Lake Erie-Erie Railroads)

Table No. 47. Schedule for Pittsburgh, Cleveland, Toledo, Detroit, and Chicago via Erie and P. & L. E. R. R. routes.

Pittsburgh—Youngstown—Ashtabula—Buffalo—Toronto—Boston Table No. 46

Table No. 46. Schedule for Pittsburgh, Youngstown, Ashtabula, Buffalo, Toronto, and Boston via P. & L. E. R. R. routes.

EXPLANATION OF REFERENCE MARKS. ♦ Stops on signal to receive or discharge revenue passengers. f Stops on signal to receive or discharge passengers. h Stops regularly to receive passengers only. i Stops regularly to discharge passengers only. A On Sunday morning leave Buffalo 6:10 A. M. arrive Toronto 9:30 A. M. E By connecting Limousine service between Ogdensburg and Canton daily except Sundays and Holidays. Railroad Tickets from or to Ogdensburg only accepted on Limousine. H Stops on signal to discharge revenue passengers from Wampum and beyond. J On Sundays and Nov. 29, 30; Dec. 23, 24, 25, 30, 31 and Jan. 1 leaves Buffalo 6:10 A.M. (ET). L Stops on signal to receive revenue passengers. S All seats reserved. T On Sundays leave Chicago 1:00 A.M. (CT)

NEW YORK, PLATTSBURG, MONTREAL, OTTAWA and QUEBEC (Via Delaware & Hudson RR)

Table No. 44. Schedule for New York, Plattsburg, Montreal, Ottawa, and Quebec via Delaware & Hudson RR.

Table No. 48 (P. & L. E. R. R.)

Table No. 48. Schedule for Pittsburgh, Chicago, Buffalo, Rochester, Syracuse, Watertown, Ogdensburg, Massena via P. & L. E. R. R. routes.

Table No. 45

Table No. 45. Schedule for Troy and Albany via Erie and P. & L. E. R. R. routes.

Table No. 45 (continued). Schedule for Troy and Albany via Erie and P. & L. E. R. R. routes.

EXPLANATION OF REFERENCE MARKS. ♦ This train does not carry checked baggage. † Daily except Sunday. f Stops on signal to receive or discharge passengers. h Stops to receive passengers only. i Stops to discharge passengers only. u By connecting train. A Will not operate from New York Nov. 28, 29; Dec. 22, 23, 24, 29, 30 or 31—passengers use Train 21 which will also operate those dates leaving New York 8:30 PM (ET). D On Saturdays and Nov. 28, 29; Dec. 22, 23, 24, 29, 30, and 31 leave New York Train 21 at 8:30 P.M. E On Saturdays and Nov. 28, 29; Dec. 22, 23, 24, 29, 30 and 31—passengers use Train 17 leaving New York 6:15 P.M. S All seats reserved.

Table No. 45. Schedule for Troy and Albany via Erie and P. & L. E. R. R. routes.



MID-WEST—FLORIDA SERVICE

ROYAL PALM 438-410	PONCE DE LEON 416	Table No. 54 New York Central System	PONCE DE LEON 3	ROYAL PALM 443-437
PM 11 00	AM 9 40	Lv Chicago (Central Sta.)... (CT) Ar	PM 1 10	AM 5 30
A 11 10	A 9 50	Lv Woodlawn (63rd St.)... Ar	B1 00	5 15
A 12 10	A10 44	Lv Kankakee... Ar	B1201	4 20
2 05	12 25	Lv Lafayette... Ar	10 30	2 35
4 00	1 55	Lv Indianapolis... Ar	9 15	12 35
7 30	5 15	Ar Cincinnati... (ET) Lv	8 15	11 15
309			Coach Seats Reserved	
11 35		Lv Detroit... (ET) Ar		7 30
1 35		Lv Toledo... Ar		5 23
4 18		Lv Bellefontaine... Ar		2 19
5 10		Lv Springfield... Ar		1 35
5 58		Lv Dayton... Ar		12 50
6 35		Lv Middletown... Ar		12 17
7 30		Ar Cincinnati... (ET) Lv		11 30
89	35		208	90
7 05	8 25	Lv Buffalo... (ET) Ar	7 40	10 10
8 43	9 55	Lv Erie... Ar	5 57	8 13
11 10	12 05	Ar Cleveland... (ET) Lv	3 50	6 10
417	433		402	442
11 30	12 55	Lv Cleveland... (ET) Ar	3 40	5 10
1 35	1 05	Lv Linndale... Ar	3 25	3 25
1 02	2 28	Lv Crestline... Ar	1 57	3 42
1 20	2 43	Lv Galion... Ar	1 45	3 20
2 45	4 10	Lv Columbus... Ar	12 11	1 30
3 57	5 10	Lv Springfield... Ar	11 15	12 38
4 55	5 55	Lv Dayton... Ar	10 34	11 53
5 30	6 24	Lv Middletown... Ar	10 00	11 14
6 25	7 20	Ar Cincinnati... (ET) Lv	9 15	10 25
3	1		2	4
8 45	9 15	Lv Cincinnati... (ET) Ar	7 55	8 45
9 30	9 50	Ar Lexington... (CT) Lv	5 05	6 00
5 00	5 45	Ar Chattanooga... (ET) Lv	11 20	12 30
9 15	10 05	Ar Atlanta... Ar	4 55	8 10
1 40	12 30	Ar Macon... Lv	4 15	5 30
4 05	4 25	Ar Valdosta... Ar	11 50	12 50
6 55	7 15	Ar Jacksonville... (ET) Lv	9 00	10 00
5	75		76	6
C 9 45	10 30	Lv Jacksonville... (ET) Ar	7 00	D 8 10
10 21	11 07	Ar St. Augustine... Lv	6 11	7 28
11 15	12 20	Ar Daytona Beach... Lv	5 03	6 33
3 10	4 43	Ar West Palm Beach... Lv	12 20	2 46
4 22	6 10	Ar Fort Lauderdale... Lv	10 50	1 34
4 37	6 24	Ar Hollywood... Lv	10 36	1 24
4 54	6 39	Ar North Miami... Lv	10 21	1 09
C 5 15	7 00	Ar Miami... (ET) Lv	10 00	D12 40
57-157	9-1		2-10	158-58
9 20	10 00	Lv Jacksonville... (ET) Ar	6 30	3 55
1 30	5 00	Ar Tampa... Lv	10 30	11 30
2 50		Ar Clearwater... Lv	3 15	10 20
3 25		Ar St. Petersburg... Lv	9 45	9 45
3 55		Ar Sarasota... (ET) Lv	9 00	9 00
91	75		76	92
10 00	10 15	Lv Jacksonville... (ET) Ar	6 30	5 55
12 55	2 05	Ar Orlando... Lv	1 35	2 35
3 05	5 45	Ar Tampa... Lv	11 00	12 45
4 50	11 05	Ar Sarasota... (ET) Lv	5 15	10 45
PM	AM		PM	AM

**ROYAL PALM EQUIPMENT**  
(NYC to Cincinnati—Sou. Ry. to Jacksonville—FEC Ry. to Miami)  
Observation Lounge Sleeping Car.  
Cincinnati-Jacksonville (5 Double Bedroom-Buffer).  
Sleeping Cars.  
Detroit-Miami (10 Roomette-6 Double Bedroom).  
Detroit-Miami (10 Roomette-6 Double Bedroom). (First Trip 12-18-57)  
Detroit-Miami (13 Double Bedroom). (First Trip 12-18-57)  
Cleveland-Miami (10 Roomette, 6 Double Bedroom). (First Trip 12-18-57)  
Dining Cars serving all meals.  
Reclining Seat Coaches.  
Detroit-Miami (Last Trip 12-17-57)  
Detroit-Jacksonville (First Trip 12-18-57) } All Seats reserved.  
Cincinnati-Jacksonville.  
Coaches (Unreserved Seats)—Between All Points.  
**PONCE DE LEON**  
(NYC to Cincinnati—Sou. Ry. to Jacksonville)  
Sleeping Car.  
Cincinnati-Jacksonville (10 Section-Restaurant)  
Coaches—Between All Points.

**EXPLANATION OF REFERENCE MARKS**  
A Stops to receive revenue passengers only.  
B Stops to discharge revenue passengers only.  
C Effective Dec. 20 leaves Jacksonville 8:10 a.m. (train 87) arrives Miami 3:20 p.m.  
D Effective Dec. 21 leaves Miami 11:05 a.m. (train 88) arrives Jacksonville 6:15 p.m.

Here's a **valued customer**  
...with a **personal introduction!**



**RAIL TRAVEL CARDS**  
make "charge-it" service quick and easy!

At thousands of ticket offices, Rail Travel Card holders get a special welcome. On trains, too, they're greeted as valued regular customers. RTC sales are quick and easy for both traveler and railroader. And mail-order ticket buying is a real timesaver ... as is use of messengers and hotel porters. No wonder railroads from coast to coast roll out the red carpet for the Rail Travel Card user!

Many leading hotels and auto rental agencies (Avis, Hertz, National) honor Rail Travel Cards



for complete information and application form, write  
**RAIL TRAVEL CREDIT AGENCY**  
E. B. PADRICK, chairman  
436 Union Station • Chicago 6, Illinois



Bring the whole family along ... for their Express pleasure

**How Empire Statesmanship keeps you young**

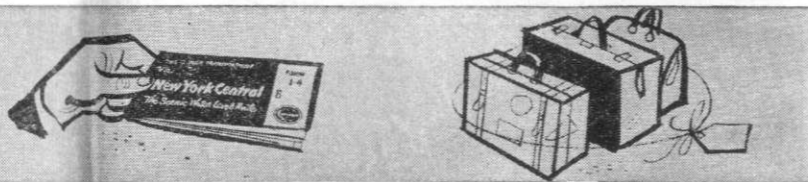
THE GLEAMING EMPIRE STATE EXPRESS—serving New York, Buffalo, Cleveland, Detroit—puts the youthful excitement of "going places" back into travel for you.  
Deluxe coach service, luxurious parlor cars and the comfortable, considerate "Statesmanship" of the train and its staff make even a business trip a good excuse for a family excursion. (You'll save on Family-Fare rates, too.)

The Empire State whisks you through spots where crowded highways never go—along the very edge of the Hudson ... through the historic Mohawk Valley. On the way there's a chance to enjoy a book, a snooze, a relaxing chat in the tavern-lounge, a delicious lunch or dinner.  
See page 8 for complete schedule and cities served. Then let sensible travel on the Empire State Express add to the time-of-your-life.

Take it easy ... take the **New York Central Railroad**



## GENERAL INFORMATION



This information has been abbreviated, consult ticket agent for complete details.

### TICKETS AND FARES

**Purchase in Advance.** Please buy tickets before boarding trains and avoid payment of extra charge.

**Adjustment of Fares.** Should any misunderstanding arise with conductors or ticket agents, pay the fare requested, secure a receipt and send it to address shown under "Redemption of Tickets."

**Redemption of Tickets.** Unused or partially used tickets of all classes will be redeemed under tariff regulations at proper value, less service charge, where applicable. Communicate with Mr. Arthur A. Meyer, Director, Passenger Fares and Divisions, 466 Lexington Ave., New York 17, N. Y.

**Loss of Tickets.** Passenger should guard against such loss, as railroads are not responsible.

**Children.** Under five years of age, free, when accompanied by parent or guardian; 5 years of age and under 12, one-half fare; 12 years of age and over, full fare. Important additional savings possible in round-trip travel under Family Plan described on page 45.

**Restrictions on Reduced Fare Tickets.** Tickets bearing endorsements such as Charity, DVS or VAH, Blind and Attendant, will not be honored on The James Whitcomb Riley (3 and 4), Twentieth Century Limited (25 and 26), The Cleveland Mercury (75, 76, 750 and 761), The Chicago Mercury (375 and 376). Clergy tickets will not be honored on Twentieth Century Limited (25 and 26). Railroad employees tickets will not be honored on Twentieth Century Limited (25 and 26) and will only be honored locally between Detroit and Buffalo on the Empire State Express (50 and 51) and locally from Buffalo to Cleveland on Empire State Express (51).

**Stopovers.** Stopovers are permitted at any point en route within limit of ticket.

**Side Trip Niagara Falls.** Tickets reading via NYC from Cleveland, O., Youngstown, O., St. Thomas, Ont. to stations beyond Rochester, N. Y., or vice versa, will be honored for free side trip, Buffalo to Niagara Falls.

**Optional Routes.** There are many optional, exchange and honoring arrangements available when traveling New York Central. Consult ticket agent or passenger sales representative for details.

### RESERVATIONS--PULLMAN AND COACH

**Purchase in Advance.** Tickets for reserved Pullman space and coach seats should be purchased as far in advance as possible.

**Cancellations.** If you change your travel plans, please cancel Pullman or coach reservations promptly by telephone.

**Refund of Pullman Tickets.** To obtain full refund, less service charge, space must be canceled not later than day before train departure, or two days before if train departs between midnight and 5:00 A.M. Where space is canceled on day of departure, more than four hours before train time, a late cancellation charge of 50% of space charge will be assessed. No refund will be allowed when space is canceled within four hours of train time. Apply to ticket agent.

**Refund of Reserved Coach Seat Tickets.** Tickets sold before date of departure are redeemable only if space is canceled on or before day prior to departure date. Tickets sold on date of departure are redeemable only if space is canceled three hours prior to departure of train.

### BAGGAGE

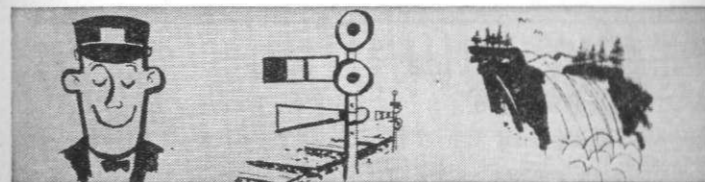
**Baggage Defined.** Personal baggage consists of wearing apparel, toilet articles (except liquids) and personal effects necessary for comfort and convenience. Money, jewelry, silverware, negotiable papers, fragile or perishable articles, radios and household goods are not checkable baggage.

**Check Baggage Direct.** Free yourself of unneeded luggage while en route. Check your baggage through to home address, hotel, steamship dock, etc. at destination. Reliable transfer companies perform the service at nominal charges. Charges may be paid at starting point or at destination.

**Baggage Checking Allowance and Service Charge.** All baggage checked subject to tariff regulations. 150 pounds will be transported on full-fare ticket and 75 pounds on half-fare ticket, free, except a service charge of 25¢ for each suitcase or other piece of hand baggage and 50¢ for each trunk will be made at time of checking. No single piece of baggage exceeding 300 pounds in weight or exceeding \$2500.00 in value will be checked.

**Forwarding and Arrival of Baggage.** Passengers are urged to check baggage in advance so that it may be forwarded on a preceding train. Every effort will be made to speed handling but the railroad cannot guarantee the forwarding of baggage on the same train with owner.

**Baggage Insurance.** Baggage insurance available in all states except Ohio. See baggage or ticket agent for particulars.



**Miscellaneous.** Dogs, small household pets, baby carriages, bicycles and club paraphernalia may be transported in baggage cars in accordance with tariff regulations. Consult baggage or ticket agent.

**Identify Your Baggage.** See that each piece of your baggage is marked inside and out with your name and address.

**Pick Up Baggage Promptly.** This to avoid storage charges on baggage left longer than the free time allowed, which is 24 hours.

### MISCELLANEOUS

**The Time.** From 12:01 A.M. to 12:00 o'clock noon, inclusive, is shown in light-face type, between 12:01 P.M. and 12:00 o'clock midnight by dark-face type.

**Regarding Time Tables.** While every precaution is taken, the New York Central is not responsible for errors in time tables, inconveniences or damage resulting from delayed trains or failure to make connections. Train schedules and equipment assigned to trains are subject to change without notice.

**Meeting Friends.** It is always helpful to friends who plan to meet you to know the train number or name, also the number or designation of the Pullman car or coach in which you have a reservation. The Information Bureau in larger stations is the ideal meeting place.

**Wheel-chair Service.** Arrangements for this service should be made in advance with ticket agent, passenger sales representative or station master.

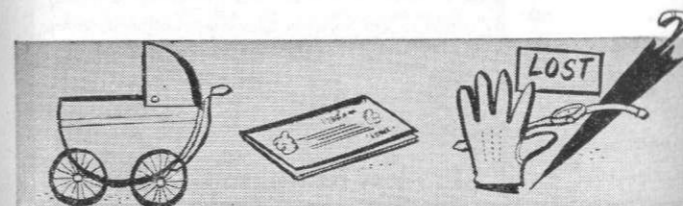
**Travelers Aid Society.** Representatives are available at major stations to assist passengers in need of help.

**American Express Travelers Checks.** These checks are on sale at principal ticket offices.

**The Western Union Telegraph Company.** Messages will be handled at public telegraph offices on the New York Central.

**Lost Articles.** When article is lost on train, or in waiting room, owner should apply at once to agent at station where he left the train.

See Helpful Guide To Reading Your Time Table  
on inside of front cover



SCOUTS OUT !!!

-- for your new plant site



It would take you years just looking-on-the-run at all the first-rate plant sites available to you along the Central's 11,000 route-miles.

So why not let George do it—George D. Avery, for instance, who is manager of Industrial Development for New England . . . or Henry Coffman from Chicago . . . or any of the eagle-eyed managers working out of the offices listed below.

These men have stumped their territory, know the towns, the access to power and raw materials, the rainfall and weather. They'll help you find the right location, will advise you confidentially, will even help with buying. Write or call—

G. D. AVERY  
South Station  
Boston 10, Mass.  
Tel: Hubbard 2-7200

A. J. BARANICK  
P. & L. E. Terminal  
Pittsburgh 19, Pa.  
Tel: Court 1-3201

J. J. DAN  
Terminal Tower  
Cleveland 13, Ohio  
Tel: PProspect 1-5000

W. J. MARSHALL  
466 Lexington Avenue  
New York 17, N. Y.  
Tel: MUrray Hill 9-8000

G. R. PETERSON  
Michigan Central Terminal  
Detroit 16, Michigan  
Tel: Tashmoo 5-7000

H. W. COFFMAN  
LaSalle Street Station  
Chicago 5, Ill.  
Tel: WABash 2-4200

H. F. MEYER  
230 East 9th Street  
Cincinnati 2, Ohio  
Tel: Dunbar 1-3540





PULLMAN, COACH AND DINING CAR SERVICE  
TRAINS NOT SHOWN CARRY COACHES ONLY

Regularly assigned cars are air-conditioned

OCCUPANCY OF SLEEPING CARS

May be Occupied at—

Table with columns for destination and time. Includes Albany, Buffalo, Chicago, Cleveland, Cincinnati, Detroit, New York, Rochester, Syracuse, Toledo.

Must be Vacated at—

Table with columns for destination and time. Includes Albany, Bay City, Buffalo, Chicago, Cincinnati, Cleveland, Columbus, Detroit, New York, Rochester, Syracuse, Toledo.

No. 2—THE PACEMAKER—DAILY—EASTBOUND

Lounge Sleeping Cars Chicago to New York (6 Double Bedroom-Beverages) St. Louis to New York (6 Double Bedroom-Beverages) From No. 24 at Buffalo

No. 6—FIFTH AVENUE SPECIAL—DAILY—EASTBOUND

Lounge Sleeping Car Chicago to New York (6 Double Bedroom-Beverages) Buffet breakfast service into New York

No. 12—THE SOUTHWESTERN—DAILY—EASTBOUND

Lounge Sleeping Car St. Louis to New York (6 Double Bedroom-Beverages) Buffet breakfast service into New York

No. 3—THE JAMES WHITCOMB RILEY—DAILY WESTBOUND

ALL COACH SEATS RESERVED—PORTER SERVICE

Sleeping Cars Asheville, N. C. to Chicago (10 Roomette-6 Double Bedroom) From Sou. Ry. No. 28 at Cincinnati

No. 8—THE WOLVERINE DAILY—EASTBOUND

Sleeping Cars Chicago to New York (10 Roomette-6 Double Bedroom) Chicago to New York (22 Roomette) Detroit to New York (12 Double Bedroom) (Sat. only) Detroit to New York (22 Roomette) (Sat. only)

No. 4—THE JAMES WHITCOMB RILEY—DAILY EASTBOUND

ALL COACH SEATS RESERVED—PORTER SERVICE

Sleeping Car Chicago to Newport News, Va. (10 Roomette-6 Double Bedroom) In C. & O. No. 4-41 from Cincinnati

No. 9—CHICAGO MAIL—DAILY

Sleeping Car Toledo to Chicago, Ex. Sat. night (22 Roomette) Coach Cleveland to Chicago

No. 11—THE SOUTHWESTERN—DAILY—WESTBOUND

Sleeping Car New York to St. Louis, Ex. Sat. (10 Roomette-6 Double Bedroom) From No. 7 at Cleveland—Will not run Nov. 28, 29, Dec. 22, 23, 24, 25, 29, 30 or 31

No. 15—OHIO STATE LIMITED—DAILY—WESTBOUND STREAMLINER

Lounge Sleeping Car New York to Cincinnati (6 Double Bedroom-Beverages) New York to Cincinnati (10 Roomette-6 Double Bedroom) New York to Columbus (10 Roomette-6 Double Bedroom) New York to Toledo, Ex. Sat. (10 Roomette-6 Double Bedroom) In No. 2 from Buffalo

No. 16—OHIO STATE LIMITED—DAILY—STREAMLINER EASTBOUND

Lounge Sleeping Car Cincinnati to New York (6 Double Bedroom-Beverages) St. Louis to New York, Sat. only, (6 Double Bedroom-Buffet) From No. 13-28 at Buffalo

PULLMAN, COACH AND DINING CAR SERVICE  
TRAINS NOT SHOWN CARRY COACHES ONLY

Regularly assigned cars are air-conditioned

No. 17—THE WOLVERINE—DAILY—WESTBOUND

Sleeping Cars New York to Chicago (10 Roomette-6 Double Bedroom) Three New York to Chicago, Ex. Sat. (22 Roomette) New York to Detroit (10 Roomette-6 Double Bedroom) New York to Detroit, Sat. only (22 Roomette) will also operate Nov. 28, 29; Dec. 22, 23, 24, 25, 29, 30, 31 and April 4

No. 27—NEW ENGLAND STATES—DAILY WESTBOUND

Lounge Sleeping Car New York to Chicago (6 Double Bedroom-Beverages) From No. 16 at Buffalo

No. 21—THE NORTH STAR—SAT. ONLY WESTBOUND

Will also run Nov. 28, 29; Dec. 22, 23, 24, 29, 30 and 31

Lounge Sleeping Car New York to Cleveland (6 Double Bedroom-Buffet) New York to Toronto (10 Roomette-6 Double Bedroom) Two In No. 371 from Buffalo

No. 24—THE KNICKERBOCKER—DAILY—EASTBOUND

Lounge Sleeping Car St. Louis to New York (6 Double Bedroom-Beverages) In No. 2 from Buffalo

No. 25—WESTBOUND No. 26—EASTBOUND TWENTIETH CENTURY LIMITED—EX. SAT. STREAMLINER

Will not run Nov. 28, 29; Dec. 22, 23, 24, 25, 29, 30 or 31

No. 28—NEW ENGLAND STATES—DAILY—EASTBOUND

Lounge Sleeping Car St. Louis to New York, Sat. only (6 Double Bedroom-Buffet) From No. 18 at Cleveland to No. 16 at Buffalo

No. 39—NORTH SHORE LIMITED—DAILY—WESTBOUND

Sleeping Cars New York to Chicago (10 Roomette-6 Double Bedroom) Buffalo to Chicago (10 Roomette-6 Double Bedroom) Buffalo to Chicago (22 Roomette) Toronto to Chicago (10 Roomette-6 Double Bedroom) at Detroit

No. 30—EASTBOUND No. 31—WESTBOUND THE TWILIGHT LIMITED—DAILY ALL SEATS IN PARLOR CARS AND COACHES ARE RESERVED

Observation Parlor Car (N. Y. C. Car) Chicago and Detroit Parlor Car—Sleeper as Parlor Car Detroit to Chicago (Ex. Sat.) (Westbound Only) Dining Service Lounge Car (Beverages) Chicago and Detroit Reclining Seat Coaches—Porter Service Chicago and Detroit

No. 32—EX. SAT. NITE-SUN. MORN.

Sleeping Car Chicago to Toledo, Ex. Sat. Nite-Sun. Morn. (22 Roomette) Coach Chicago to Cleveland

No. 33—INTERSTATE EXPRESS—DAILY WESTBOUND

Sleeping Cars Boston to Cleveland, Ex. Sat. (10 Roomette-6 Double Bedroom) In No. 57 from Buffalo, will not operate Nov. 28, 29; Dec. 22, 23, 24, 25, 29, 30 or 31

No. 35—THE IROQUOIS—DAILY—WESTBOUND

Lounge Sleeping Car Boston to Chicago (6 Double Bedroom) Sleeping Cars New York to Ogdensburg, Ex. Sat., via Carthage and Watertown (10 Roomette-5 Double Bedroom) In St. L. Div. No. 59 from Utica

No. 40—THE MOHAWK—DAILY—EASTBOUND

Parlor Car (Sleeper as Parlor Car) Buffalo to New York (10 Roomette-6 Double Bedroom) Dining Service Lounge Coach (Beverages) Buffalo to New York Coach Buffalo to New York (Reclining Seat)



PULLMAN, COACH AND DINING CAR SERVICE  
TRAINS NOT SHOWN CARRY COACHES ONLY  
Regularly assigned cars are air-conditioned

No. 41—THE KNICKERBOCKER—DAILY—WESTBOUND

Lounge Sleeping Car  
New York to St. Louis (6 Double Bedroom-Beverages)  
Sleeping Cars  
New York to St. Louis (10 Roomette-6 Double Bedroom)—Two  
Boston to St. Louis (10 Roomette-6 Double Bedroom)—From No. 49 at Albany  
Boston to Cincinnati (10 Roomette-6 Double Bedroom)—From No. 49 at Albany—To No. 15 at Buffalo  
Cleveland to St. Louis (10 Roomette-5 Double Bedroom)—From No. 309 at Bellefontaine  
Dining Service  
Cleveland to St. Louis  
Boston to Buffalo (Diner Lounge)—From No. 49 at Albany  
Lounge Coach (Beverages)  
New York to Buffalo  
Reclining Seat Coaches  
New York to St. Louis  
Boston to St. Louis—From No. 49 at Albany  
Detroit to St. Louis—From No. 309 at Bellefontaine

No. 43—THE SOUTH SHORE—DAILY—WESTBOUND

Sleeping Cars  
New York to Albany, Ex. Fri. and Sat. Night, Sat. and Sun. Morn. (22 Roomette)  
New York to Buffalo, Ex. Sat., Night-Sun. Morn. (22 Roomette)  
Lounge Coach (Beverages and Sandwiches)  
Albany to Buffalo  
Coaches  
New York to Albany  
Boston to Albany  
Cleveland to Chicago

No. 44—NEW YORK SPECIAL—DAILY—EASTBOUND

Lounge Sleeping Cars  
Niagara Falls to New York, Ex. Sat. (6 Double Bedroom-Buffer)—From No. 240 at Buffalo—will not operate Nov. 28, 29; Dec. 28, 29, 30, 31 or 1  
Sleeping Cars  
Chicago to New York (10 Roomette-6 Double Bedroom)  
Chicago to Boston (10 Roomette-6 Double Bedroom)—In No. 46 from Buffalo  
Detroit to New York (10 Roomette-5 Double Bedroom)—In No. 16 from Buffalo  
Detroit to New York, Ex. Sat. (12 Double Bedroom)  
Detroit to New York, Ex. Sat. (22 Roomette)  
Detroit to Boston, Ex. Sat. (10 Roomette-6 Double Bedroom)—In No. 46 from Buffalo—will not operate Nov. 28, 29; Dec. 28, 29, 30, 31 or April 4  
Niagara Falls to New York (10 Roomette-5 Double Bedroom)—From No. 240 at Buffalo  
Buffalo to New York, Sat. only (10 Roomette-6 Double Bedroom)  
Syracuse to New York (10 Roomette-6 Double Bedroom)  
Syracuse to New York, Ex. Sat. Night-Sun. Morn. (22 Roomette)—Will not operate A. M. of Nov. 29, 30; Dec. 28, 29, 30, 31 or Jan. 1  
Rochester to New York, Ex. Sat. (10 Roomette-5 Double Bedroom)—From Albany Road No. 18-S at Syracuse—Will not run a. m.'s of Nov. 29, 30; Dec. 28, 29, 30, 31 or Jan. 1  
Massena to New York via Watertown (10 Roomette-5 Double Bedroom)—From St. Law. Dis. No. 8-308 at Syracuse  
Dining Service  
Chicago to Detroit—Diner Lounge  
Detroit to Buffalo  
Coaches  
Chicago to New York (Reclining Seat)

No. 46—INTERSTATE EXPRESS—DAILY—EASTBOUND

Lounge Sleeping Car  
Buffalo to Boston (6 Double Bedroom-Beverages)  
Sleeping Cars  
Cleveland to Boston (10 Roomette-6 Double Bedroom)—From No. 6 at Buffalo  
Cleveland to Boston, Ex. Sat. (10 Roomette-6 Double Bedroom)—From No. 6 at Buffalo  
Chicago to Boston (10 Roomette-6 Double Bedroom)—From No. 45 at Buffalo  
Detroit to Boston, Ex. Sat. (10 Roomette-6 Double Bedroom)—From No. 34 at Buffalo—will not operate Nov. 28, 29; Dec. 28, 29, 30, 31 or April 4  
Buffalo to Boston (10 Roomette-6 Double Bedroom)  
Dining Service  
Cleveland and New York  
Coaches  
Buffalo to Boston (Reclining Seats)

No. 47—THE DETROITER—EX. SAT.—WESTBOUND

Will not run Nov. 28, 29; Dec. 22, 23, 24, 25, 29, 30, 31 or April 4  
Lounge Sleeping Cars  
New York to Detroit (6 Double Bedroom-Beverages)  
Sleeping Cars  
New York to Detroit (4 Comp.-4 Double Bedroom-2 D. R.)  
New York to Detroit (12 Double Bedroom)—Three  
New York to Detroit (22 Roomette)—Two  
Boston to Detroit, Ex. Sat. (10 Roomette-6 Double Bedroom)—From No. 15 at Albany  
Buffalo to Detroit (22 Roomette)  
Dining Service  
Reclining Seat Coach  
New York to Detroit—All Seats Reserved—Porter Service  
No. 48—THE DETROITER—EX. SAT.—EASTBOUND  
Lounge Sleeping Cars  
Detroit to New York (6 Double Bedroom-Beverages)  
Sleeping Cars  
Detroit to New York (4 Comp.-4 Double Bedroom-2 D. R.)  
Detroit to New York (12 Double Bedroom)—Two  
Detroit to New York (22 Roomette)  
Dining Service  
Reclining Seat Coach  
Detroit to New York—All Seats Reserved—Porter Service  
No. 49—THE BERKSHIRE—DAILY—WESTBOUND  
Sleeping Cars  
Boston to St. Louis (10 Roomette-6 Double Bedroom)—In No. 41 from Albany  
Boston to Cincinnati (10 Roomette-6 Double Bedroom)—In No. 41 from Albany  
Diner Lounge  
Boston to Buffalo—In No. 41 from Albany  
Coaches  
Boston to Buffalo  
Boston to St. Louis—In No. 41 from Albany  
No. 50—EASTBOUND  
No. 51—WESTBOUND  
EMPIRE STATE EXPRESS—DAILY  
ALL SEATS IN COACHES AND PARLOR CARS ARE RESERVED  
Sleeping Car (Westbound only)  
Buffalo to St. Louis, Ex. Sat., (10 Roomette-6 Double Bedroom)—In No. 47 from Cleveland  
Parlor Cars (N. Y. C. Cars)  
Cleveland and New York  
Detroit and New York  
Lounge Parlor Car (Beverages)  
Cleveland and New York  
Dining Service  
Cleveland and New York  
Detroit and New York  
Observation Lounge (Coach (Beverages)  
Buffalo and New York  
Lounge Coach (Beverages)  
Buffalo and Cleveland  
Reclining Seat Coaches—Porter Service  
Cleveland and New York  
Detroit and New York  
Buffalo and New York  
No. 52—152—THE EASTERNER—DAILY—EASTBOUND  
Sleeping Cars  
Albany to New York, Ex. Fri. and Sat. Night-Sat. and Sun. Morn.—(22 Roomette)  
Buffalo to New York, Ex. Sat. (22 Roomette)  
Grill Lounge (Beverages-Sandwiches and Hot Meals)  
Buffalo to Albany  
Coach  
Cleveland-Buffalo to New York

No. 57—CLEVELAND LIMITED—EX. SAT. WESTBOUND

Will not run Nov. 28, 29; Dec. 22, 23, 24, 29, 30 or 31  
Lounge Sleeping Car  
New York to Cleveland (6 Double Bedroom)—Two  
Buffet Breakfast Service into Cleveland  
Sleeping Cars  
New York to Cleveland (13 Double Bedroom)  
New York to Cleveland (22 Roomette)—Two  
New York to St. Louis (10 Roomette-6 Double Bedroom)—In No. 11 from Cleveland  
New York to Toronto (10 Roomette-6 Double Bedroom)—Two  
New York to Toronto (13 Double Bedroom)  
New York to Cleveland (10 Roomette-6 Double Bedroom)—From No. 35 at Buffalo  
Toronto to Cleveland (22 Roomette)—From No. 382 at Buffalo  
Coaches (Reclining Seats)  
New York to Cleveland  
New York to Toronto—In No. 371 from Buffalo  
New York to St. Louis—In No. 11 from Cleveland  
No. 58—CLEVELAND LIMITED—EX. SAT. EASTBOUND  
Lounge Sleeping Car  
Cleveland to New York (6 Double Bedroom-Buffer)  
St. Louis to New York (6 Double Bedroom-Buffer)—From No. 12 at Cleveland  
Buffet Breakfast Service into New York  
Sleeping Cars  
Cleveland to New York (10 Roomette-5 Double Bedroom)  
Cleveland to New York (13 Double Bedroom)  
Cleveland to New York (22 Roomette)—Two  
St. Louis to New York (10 Roomette-6 Double Bedroom)—From No. 12 at Cleveland—Two  
Buffalo to New York (10 Roomette-6 Double Bedroom)  
Buffalo to New York (10 Roomette-6 Double Bedroom)  
Reclining Seat Coach  
Cleveland to New York  
St. Louis to New York—From No. 12 at Cleveland  
No. 59—THE CHICAGOAN—EX. SAT.—WESTBOUND  
Will not run Nov. 28, 29; Dec. 22, 23, 24, 29, 30 or 31  
Lounge Sleeping Cars  
New York to Chicago (6 Double Bedroom-Buffer)  
Sleeping Cars  
New York to Chicago (10 Roomette-6 Double Bedroom)  
New York to Cleveland (10 Roomette-6 Double Bedroom)—Three  
New York to Massena via Richland and Watertown (10 Roomette-5 Double Bedroom)—In St. L. Dis. No. 7 from Syracuse  
New York to Lake Placid (10 Roomette-5 Double Bedroom)—In Adk. Dis. No. 5 from Utica  
Dining Service  
Buffalo to Chicago  
Coaches  
New York to Chicago (Reclining Seat)  
No. 61 (D&H No. 9)—NORTHBOUND  
No. 62 (D&H No. 10)—SOUTHBOUND  
MONTREAL LIMITED—DAILY  
Lounge Sleeping Car  
New York and Montreal (6 Double Bedroom-Buffer)  
Sleeping Cars  
New York and Montreal (4 Comp.-4 Double Bedroom-2 D. R.)  
New York and Montreal (13 Double Bedroom)—Three  
New York and Montreal (22 Roomette)—Two  
New York and Montreal (6 Sec.-5 Double Bedroom)  
Dining Car—Whitetail and Montreal  
Coaches  
New York and Montreal

No. 67—WESTBOUND

No. 68—EASTBOUND  
THE COMMOORE VANDERBILT—DAILY  
ALL COACH SEATS RESERVED—PORTER SERVICE  
Observation Lounge Sleeping Car  
New York and Chicago (5 Double Bedroom-Beverages)  
Sleeping Cars  
New York and Chicago, Ex. Sat. (12 Double Bedroom)  
New York and Chicago, Ex. Sat. (4 Comp.-4 Double Bedroom-2 D. R.)  
New York and Chicago (10 Roomette-6 Double Bedroom)—Three  
New York and Chicago (22 Roomette)—Two  
New York and Los Angeles (4 Comp.-4 Double Bedroom-2 D. R.)—Via Santa Fe Super Chief between Chicago and Los Angeles  
New York and Los Angeles (10 Roomette-6 Double Bedroom)—Via Santa Fe Super Chief between Chicago and Los Angeles  
New York and Los Angeles (10 Roomette-6 Double Bedroom)—Via New-U. P. City of Los Angeles between Chicago and Los Angeles  
Lounge Car (Beverages)  
New York and Chicago  
Dining Service  
New York and Chicago (Reclining Seat)  
Coaches

No. 75-750—WESTBOUND

No. 761-76—EASTBOUND  
THE CLEVELAND MERCURY—DAILY  
Parlor Car (N. Y. C. Car)  
Detroit to Cleveland (Eastbound only)  
Lounge Coach (Beverages)  
Cleveland and Detroit  
Dining Service  
Reclining Seat Coaches  
Cleveland and Detroit  
Coach  
Cleveland to Chicago (Westbound only)—In No. 201 from Toledo  
No. 78—THE BERKSHIRE—DAILY—EASTBOUND  
Sleeping Cars  
Chicago to Albany (10 Roomette-6 Double Bedroom)—Two—From No. 2 at Buffalo  
Cincinnati to Albany (10 Roomette-6 Double Bedroom)—From No. 15 at Buffalo  
Pittsburgh to Albany, Ex. Sat. (10 Roomette-5 Double Bedroom)—From P. & L. E. No. 7-N. Y. C. No. 278 at Ashburnham—No. 84 at Buffalo  
Diner Lounge  
Buffalo to Boston  
Reclining Seat Coaches  
Buffalo to Boston  
St. Louis to Boston—From No. 24 at Buffalo  
No. 89—THE FOREST CITY—DAILY—WESTBOUND  
Lounge Sleeping Car  
Cleveland to Chicago (6 Double Bedroom-Buffer)  
Buffet Breakfast Service into Chicago  
Sleeping Cars  
Buffalo to Chicago (10 Roomette-5 Double Bedroom)  
Buffalo to Cincinnati, Ex. Sat. (10 Roomette-5 Double Bedroom)—In No. 47 from Cleveland  
Cleveland to Chicago (10 Roomette-6 Double Bedroom)  
Cleveland to Chicago (22 Roomette)

No. 90—THE CHICAGOAN—DAILY—EASTBOUND

Lounge Sleeping Car  
Chicago to Cleveland (6 Double Bedroom-Buffer)  
Sleeping Cars  
Chicago to New York (10 Roomette-6 Double Bedroom)  
Chicago to Buffalo (10 Roomette-6 Double Bedroom)  
Chicago to Cleveland (22 Roomette)  
Cincinnati to Buffalo, Ex. Sat. (10 Roomette-5 Double Bedroom)—From No. 48 at Cleveland  
St. Louis to Buffalo (10 Roomette-6 Double Bedroom)—From No. 408 at Cleveland  
Dining Service  
Cleveland to New York  
Lounge Car (Beverages)  
Buffalo to New York  
Coaches  
Chicago to New York (Reclining Seat)  
St. Louis to New York (Reclining Seat)—From No. 408 at Cleveland  
No. 95—DE WITT CLINTON—DAILY—WESTBOUND  
Observation Parlor Car (N. Y. C. Car)  
New York to Montreal—In D. & H. No. 56 from Albany  
No. 203—DAILY  
Dining Service  
New York to Buffalo  
Albany to House Point—In D. & H. No. 56  
Coaches  
New York to Toronto—In No. 383 from Buffalo  
New York to Buffalo (Reclining Seat)  
New York to Montreal—In D. & H. No. 56 from Albany  
No. 94-96—DE WITT CLINTON—DAILY—EASTBOUND  
Grill Lounge (Beverages, Sandwiches and Hot Meals)  
Buffalo to New York  
Coaches  
Buffalo to New York (Reclining Seat)  
Toronto to New York—From No. 374 at Buffalo  
No. 99—THE TUSCARORA—EX. SAT.—WESTBOUND  
Will not run Nov. 28, 29; Dec. 22, 23, 24, 29, 30 or 31  
Lounge Sleeping Car  
New York to Niagara Falls (6 Double Bedroom-Buffer)—In No. 207 from Buffalo  
Buffet Breakfast Service into Niagara Falls  
Sleeping Cars  
New York to Buffalo (10 Roomette-6 Double Bedroom)  
New York to Buffalo (10 Roomette-5 Double Bedroom)  
New York to Buffalo (10 Roomette-6 Double Bedroom)  
New York to Toronto (10 Roomette-6 Double Bedroom)—In No. 377 from Buffalo  
New York to Niagara Falls (10 Roomette-5 Double Bedroom)—In No. 207 from Buffalo  
New York to Rochester (10 Roomette-6 Double Bedroom)—Two  
New York to Syracuse (10 Roomette-6 Double Bedroom)  
New York to Syracuse (22 Roomette)  
New York to Rochester (10 Roomette-5 Double Bedroom)—In Adk. Dis. No. 5 from Syracuse  
Coaches  
New York to Niagara Falls—In No. 207 from Buffalo  
No. 272—PITTSBURGH-BUFFALO EXPRESS—DAILY EASTBOUND  
From P. & L. E. No. 7 at Youngstown to No. 24 at Ashtabula  
Sleeping Cars  
Pittsburgh to Toronto, Ex. Sat. (10 Roomette-5 Double Bedroom)—In No. 371 from Buffalo  
Pittsburgh to Buffalo (22 Roomette)  
Pittsburgh to Albany, Ex. Sat. (10 Roomette-5 Double Bedroom)—In No. 78 from Buffalo  
Coach  
Pittsburgh to Buffalo  
No. 279—BUFFALO-PITTSBURGH EXPRESS—DAILY WESTBOUND  
Via Pittsburgh & Lake Erie No. 38 from Youngstown  
Sleeping Cars  
Albany to Pittsburgh, Ex. Sat. (10 Roomette-5 Double Bedroom)—From No. 37 at Buffalo  
Toronto to Pittsburgh, Ex. Sat. (10 Roomette-5 Double Bedroom)—From No. 382 at Buffalo  
Buffalo to Pittsburgh (22 Roomette)  
Coaches  
Buffalo to Pittsburgh

No. 90—THE CHICAGOAN—DAILY—EASTBOUND

Lounge Sleeping Car  
Chicago to Cleveland (6 Double Bedroom-Buffer)  
Sleeping Cars  
Chicago to New York (10 Roomette-6 Double Bedroom)  
Chicago to Buffalo (10 Roomette-6 Double Bedroom)  
Chicago to Cleveland (22 Roomette)  
Cincinnati to Buffalo, Ex. Sat. (10 Roomette-5 Double Bedroom)—From No. 48 at Cleveland  
St. Louis to Buffalo (10 Roomette-6 Double Bedroom)—From No. 408 at Cleveland  
Dining Service  
Cleveland to New York  
Lounge Car (Beverages)  
Buffalo to New York  
Coaches  
Chicago to New York (Reclining Seat)  
St. Louis to New York (Reclining Seat)—From No. 408 at Cleveland  
No. 95—DE WITT CLINTON—DAILY—WESTBOUND  
Observation Parlor Car (N. Y. C. Car)  
New York to Montreal—In D. & H. No. 56 from Albany  
No. 203—DAILY  
Dining Service  
New York to Buffalo  
Albany to House Point—In D. & H. No. 56  
Coaches  
New York to Toronto—In No. 383 from Buffalo  
New York to Buffalo (Reclining Seat)  
New York to Montreal—In D. & H. No. 56 from Albany  
No. 94-96—DE WITT CLINTON—DAILY—EASTBOUND  
Grill Lounge (Beverages, Sandwiches and Hot Meals)  
Buffalo to New York  
Coaches  
Buffalo to New York (Reclining Seat)  
Toronto to New York—From No. 374 at Buffalo  
No. 99—THE TUSCARORA—EX. SAT.—WESTBOUND  
Will not run Nov. 28, 29; Dec. 22, 23, 24, 29, 30 or 31  
Lounge Sleeping Car  
New York to Niagara Falls (6 Double Bedroom-Buffer)—In No. 207 from Buffalo  
Buffet Breakfast Service into Niagara Falls  
Sleeping Cars  
New York to Buffalo (10 Roomette-6 Double Bedroom)  
New York to Buffalo (10 Roomette-5 Double Bedroom)  
New York to Buffalo (10 Roomette-6 Double Bedroom)  
New York to Toronto (10 Roomette-6 Double Bedroom)—In No. 377 from Buffalo  
New York to Niagara Falls (10 Roomette-5 Double Bedroom)—In No. 207 from Buffalo  
New York to Rochester (10 Roomette-6 Double Bedroom)—Two  
New York to Syracuse (10 Roomette-6 Double Bedroom)  
New York to Syracuse (22 Roomette)  
New York to Rochester (10 Roomette-5 Double Bedroom)—In Adk. Dis. No. 5 from Syracuse  
Coaches  
New York to Niagara Falls—In No. 207 from Buffalo  
No. 272—PITTSBURGH-BUFFALO EXPRESS—DAILY EASTBOUND  
From P. & L. E. No. 7 at Youngstown to No. 24 at Ashtabula  
Sleeping Cars  
Pittsburgh to Toronto, Ex. Sat. (10 Roomette-5 Double Bedroom)—In No. 371 from Buffalo  
Pittsburgh to Buffalo (22 Roomette)  
Pittsburgh to Albany, Ex. Sat. (10 Roomette-5 Double Bedroom)—In No. 78 from Buffalo  
Coach  
Pittsburgh to Buffalo  
No. 279—BUFFALO-PITTSBURGH EXPRESS—DAILY WESTBOUND  
Via Pittsburgh & Lake Erie No. 38 from Youngstown  
Sleeping Cars  
Albany to Pittsburgh, Ex. Sat. (10 Roomette-5 Double Bedroom)—From No. 37 at Buffalo  
Toronto to Pittsburgh, Ex. Sat. (10 Roomette-5 Double Bedroom)—From No. 382 at Buffalo  
Buffalo to Pittsburgh (22 Roomette)  
Coaches  
Buffalo to Pittsburgh

PULLMAN, COACH AND DINING CAR SERVICE  
TRAINS NOT SHOWN CARRY COACHES ONLY  
Regularly assigned cars are air-conditioned

No. 67—WESTBOUND

No. 68—EASTBOUND  
THE COMMOORE VANDERBILT—DAILY  
ALL COACH SEATS RESERVED—PORTER SERVICE  
Observation Lounge Sleeping Car  
New York and Chicago (5 Double Bedroom-Beverages)  
Sleeping Cars  
New York and Chicago, Ex. Sat. (12 Double Bedroom)  
New York and Chicago, Ex. Sat. (4 Comp.-4 Double Bedroom-2 D. R.)  
New York and Chicago (10 Roomette-6 Double Bedroom)—Three  
New York and Chicago (22 Roomette)—Two  
New York and Los Angeles (4 Comp.-4 Double Bedroom-2 D. R.)—Via Santa Fe Super Chief between Chicago and Los Angeles  
New York and Los Angeles (10 Roomette-6 Double Bedroom)—Via Santa Fe Super Chief between Chicago and Los Angeles  
New York and Los Angeles (10 Roomette-6 Double Bedroom)—Via New-U. P. City of Los Angeles between Chicago and Los Angeles  
Lounge Car (Beverages)  
New York and Chicago  
Dining Service  
New York and Chicago (Reclining Seat)  
Coaches

No. 75-750—WESTBOUND

No. 761-76—EASTBOUND  
THE CLEVELAND MERCURY—DAILY  
Parlor Car (N. Y. C. Car)  
Detroit to Cleveland (Eastbound only)  
Lounge Coach (Beverages)  
Cleveland and Detroit  
Dining Service  
Reclining Seat Coaches  
Cleveland and Detroit  
Coach  
Cleveland to Chicago (Westbound only)—In No. 201 from Toledo  
No. 78—THE BERKSHIRE—DAILY—EASTBOUND  
Sleeping Cars  
Chicago to Albany (10 Roomette-6 Double Bedroom)—Two—From No. 2 at Buffalo  
Cincinnati to Albany (10 Roomette-6 Double Bedroom)—From No. 15 at Buffalo  
Pittsburgh to Albany, Ex. Sat. (10 Roomette-5 Double Bedroom)—From P. & L. E. No. 7-N. Y. C. No. 278 at Ashburnham—No. 84 at Buffalo  
Diner Lounge  
Buffalo to Boston  
Reclining Seat Coaches  
Buffalo to Boston  
St. Louis to Boston—From No. 24 at Buffalo  
No. 89—THE FOREST CITY—DAILY—WESTBOUND  
Lounge Sleeping Car  
Cleveland to Chicago (6 Double Bedroom-Buffer)  
Buffet Breakfast Service into Chicago  
Sleeping Cars  
Buffalo to Chicago (10 Roomette-5 Double Bedroom)  
Buffalo to Cincinnati, Ex. Sat. (10 Roomette-5 Double Bedroom)—In No. 47 from Cleveland  
Cleveland to Chicago (10 Roomette-6 Double Bedroom)  
Cleveland to Chicago (22 Roomette)

No. 90—THE CHICAGOAN—DAILY—EASTBOUND

Lounge Sleeping Car  
Chicago to Cleveland (6 Double Bedroom-Buffer)  
Sleeping Cars  
Chicago to New York (10 Roomette-6 Double Bedroom)  
Chicago to Buffalo (10 Roomette-6 Double Bedroom)  
Chicago to Cleveland (22 Roomette)  
Cincinnati to Buffalo, Ex. Sat. (10 Roomette-5 Double Bedroom)—From No. 48 at Cleveland  
St. Louis to Buffalo (10 Roomette-6 Double Bedroom)—From No. 408 at Cleveland  
Dining Service  
Cleveland to New York  
Lounge Car (Beverages)  
Buffalo to New York  
Coaches  
Chicago to New York (Reclining Seat)  
St. Louis to New York (Reclining Seat)—From No. 408 at Cleveland  
No. 95—DE WITT CLINTON—DAILY—WESTBOUND  
Observation Parlor Car (N. Y. C. Car)  
New York to Montreal—In D. & H. No. 56 from Albany  
No. 203—DAILY  
Dining Service  
New York to Buffalo  
Albany to House Point—In D. & H. No. 56  
Coaches  
New York to Toronto—In No. 383 from Buffalo  
New York to Buffalo (Reclining Seat)  
New York to Montreal—In D. & H. No. 56 from Albany  
No. 94-96—DE WITT CLINTON—DAILY—EASTBOUND  
Grill Lounge (Beverages, Sandwiches and Hot Meals)  
Buffalo to New York  
Coaches  
Buffalo to New York (Reclining Seat)  
Toronto to New York—From No. 374 at Buffalo  
No. 99—THE TUSCARORA—EX. SAT.—WESTBOUND  
Will not run Nov. 28, 29; Dec. 22, 23, 24, 29, 30 or 31  
Lounge Sleeping Car  
New York to Niagara Falls (6 Double Bedroom-Buffer)—In No. 207 from Buffalo  
Buffet Breakfast Service into Niagara Falls  
Sleeping Cars  
New York to Buffalo (10 Roomette-6 Double Bedroom)  
New York to Buffalo (10 Roomette-5 Double Bedroom)  
New York to Buffalo (10 Roomette-6 Double Bedroom)  
New York to Toronto (10 Roomette-6 Double Bedroom)—In No. 377 from Buffalo  
New York to Niagara Falls (10 Roomette-5 Double Bedroom)—In No. 207 from Buffalo  
New York to Rochester (10 Roomette-6 Double Bedroom)—Two  
New York to Syracuse (10 Roomette-6 Double Bedroom)  
New York to Syracuse (22 Roomette)  
New York to Rochester (10 Roomette-5 Double Bedroom)—In Adk. Dis. No. 5 from Syracuse  
Coaches  
New York to Niagara Falls—In No. 207 from Buffalo  
No. 272—PITTSBURGH-BUFFALO EXPRESS—DAILY EASTBOUND  
From P. & L. E. No. 7 at Youngstown to No. 24 at Ashtabula  
Sleeping Cars  
Pittsburgh to Toronto, Ex. Sat. (10 Roomette-5 Double Bedroom)—In No. 371 from Buffalo  
Pittsburgh to Buffalo (22 Roomette)  
Pittsburgh to Albany, Ex. Sat. (10 Roomette-5 Double Bedroom)—In No. 78 from Buffalo  
Coach  
Pittsburgh to Buffalo  
No. 279—BUFFALO-PITTSBURGH EXPRESS—DAILY WESTBOUND  
Via Pittsburgh & Lake Erie No. 38 from Youngstown  
Sleeping Cars  
Albany to Pittsburgh, Ex. Sat. (10 Roomette-5 Double Bedroom)—From No. 37 at Buffalo  
Toronto to Pittsburgh, Ex. Sat. (10 Roomette-5 Double Bedroom)—From No. 382 at Buffalo  
Buffalo to Pittsburgh (22 Roomette)  
Coaches  
Buffalo to Pittsburgh

No. 90—THE CHICAGOAN—DAILY—EASTBOUND

Lounge Sleeping Car  
Chicago to Cleveland (6 Double Bedroom-Buffer)  
Sleeping Cars  
Chicago to New York (10 Roomette-6 Double Bedroom)  
Chicago to Buffalo (10 Roomette-6 Double Bedroom)  
Chicago to Cleveland (22 Roomette)  
Cincinnati to Buffalo, Ex. Sat. (10 Roomette-5 Double Bedroom)—From No. 48 at Cleveland  
St. Louis to Buffalo (10 Roomette-6 Double Bedroom)—From No. 408 at Cleveland  
Dining Service  
Cleveland to New York  
Lounge Car (Beverages)  
Buffalo to New York  
Coaches  
Chicago to New York (Reclining Seat)  
St. Louis to New York (Reclining Seat)—From No. 408 at Cleveland  
No. 95—DE WITT CLINTON—DAILY—WESTBOUND  
Observation Parlor Car (N. Y. C. Car)  
New York to Montreal—In D. & H. No. 56 from Albany  
No. 203—DAILY  
Dining Service  
New York to Buffalo  
Albany to House Point—In D. & H. No. 56  
Coaches  
New York to Toronto—In No. 383 from Buffalo  
New York to Buffalo (Reclining Seat)  
New York to Montreal—In D. & H. No. 56 from Albany  
No. 94-96—DE WITT CLINTON—DAILY—EASTBOUND  
Grill Lounge (Beverages, Sandwiches and Hot Meals)  
Buffalo to New York  
Coaches  
Buffalo to New York (Reclining Seat)  
Toronto to New York—From No. 374 at Buffalo  
No. 99—THE TUSCARORA—EX. SAT.—WESTBOUND  
Will not run Nov. 28, 29; Dec. 22, 23, 24, 29, 30 or 31  
Lounge Sleeping Car  
New York to Niagara Falls (6 Double Bedroom-Buffer)—In No. 207 from Buffalo  
Buffet Breakfast Service into Niagara Falls  
Sleeping Cars  
New York to Buffalo (10 Roomette-6 Double Bedroom)  
New York to Buffalo (10 Roomette-5 Double Bedroom)  
New York to Buffalo (10 Roomette-6 Double Bedroom)  
New York to Toronto (10 Roomette-6 Double Bedroom)—In No. 377 from Buffalo  
New York to Niagara Falls (10 Roomette-5 Double Bedroom)—In No. 207 from Buffalo  
New York to Rochester (10 Roomette-6 Double Bedroom)—Two  
New York to Syracuse (10 Roomette-6 Double Bedroom)  
New York to Syracuse (22 Roomette)  
New York to Rochester (10 Roomette-5 Double Bedroom)—In Adk. Dis. No. 5 from Syracuse  
Coaches  
New York to Niagara Falls—In No. 207 from Buffalo  
No. 272—PITTSBURGH-BUFFALO EXPRESS—DAILY EASTBOUND  
From P. & L. E. No. 7 at Youngstown to No. 24 at Ashtabula  
Sleeping Cars  
Pittsburgh to Toronto, Ex. Sat. (10 Roomette-5 Double Bedroom)—In No. 371 from Buffalo  
Pittsburgh to Buffalo (22 Roomette)  
Pittsburgh to Albany, Ex. Sat. (10 Roomette-5 Double Bedroom)—In No. 78 from Buffalo  
Coach  
Pittsburgh to Buffalo  
No. 279—BUFFALO-PITTSBURGH EXPRESS—DAILY WESTBOUND  
Via Pittsburgh & Lake Erie No. 38 from Youngstown  
Sleeping Cars  
Albany to Pittsburgh, Ex. Sat. (10 Roomette-5 Double Bedroom)—From No. 37 at Buffalo  
Toronto to Pittsburgh, Ex. Sat. (10 Roomette-5 Double Bedroom)—From No. 382 at Buffalo  
Buffalo to Pittsburgh (22 Roomette)  
Coaches  
Buffalo to Pittsburgh



**PULLMAN, COACH AND DINING CAR SERVICE**  
**TRAINS NOT SHOWN CARRY COACHES ONLY**  
Regularly assigned cars are air-conditioned

**No. 302—MICHIGAN SPECIAL—DAILY—NORTHBOUND**

**Sleeping Cars**  
Miami to Detroit (10 Roomette-6 Double Bedroom)—  
From F. E. C. Ry. No. 8 at Jacksonville—Sou. Ry. No. 4 at Cincinnati  
Cincinnati to Detroit (10 Roomette-6 Double Bedroom)  
St. Louis to Detroit (22 Roomette)—From No. 408 at Bellefontaine

**Coaches**  
Cincinnati to Detroit  
St. Louis to Detroit—From No. 408 at Bellefontaine  
Miami to Detroit (Reclining Seat—All Seats Reserved)  
—From F. E. C. Ry. No. 8 at Jacksonville—Sou. Ry. No. 4 at Cincinnati (Last trip 12-17-57)  
Jacksonville to Detroit (Reclining Seat—All Seats Reserved)—From Sou. Ry. No. 4 at Cincinnati (First trip 12-18-57)

**No. 309—OHIO SPECIAL—DAILY—SOUTHBOUND**

**Sleeping Cars**  
Detroit to Miami (10 Roomette-6 Double Bedroom)—  
In Sou. Ry. No. 3 from Cincinnati—F. E. C. Ry. No. 5 from Jacksonville  
Detroit to Cincinnati (10 Roomette-6 Double Bedroom)  
Detroit to St. Louis (22 Roomette)—In No. 41 from Bellefontaine

**Coaches**  
Detroit to Cincinnati  
Detroit to St. Louis—In No. 41 from Bellefontaine  
Detroit to Miami (Reclining Seat—All Seats Reserved)  
—In Sou. Ry. No. 3 from Cincinnati—F. E. C. Ry. No. 5 from Jacksonville (Last trip 12-17-57)  
Detroit to Jacksonville (Reclining Seat—All Seats Reserved)—In Sou. Ry. No. 3 from Cincinnati (First trip 12-18-57)

**No. 315—MOTOR CITY SPECIAL—DAILY WESTBOUND**

**Lounge Sleeping Car**  
Detroit to Chicago (6 Double Bedroom-Buffer)  
Buffet Breakfast Service into Chicago

**Sleeping Cars**  
Detroit to Chicago, Ex. Sat. (13 Double Bedroom)  
Detroit to Chicago (22 Roomette)—Two  
Bay City to Chicago, Ex. Sat. (10 Roomette-6 Double Bedroom)—From No. 352 at Jackson

**Coaches**  
Detroit to Chicago

**No. 316—THE MOTOR CITY SPECIAL—DAILY EASTBOUND**

**Lounge Sleeping Car**  
Chicago to Detroit (6 Double Bedroom-Buffer)  
Buffet Breakfast Service into Detroit

**Sleeping Cars**  
Chicago to Detroit, Ex. Fri. (10 Roomette-6 Double Bedroom)  
Chicago to Detroit, Ex. Sat. (10 Roomette-5 Double Bedroom)  
Chicago to Detroit (22 Roomette)—Two  
Chicago to Detroit, Ex. Sat. (13 Double Bedroom)

**Coaches**  
Chicago to Detroit

**No. 337—NORTHBOUND**  
**No. 338—SOUTHBOUND**  
**THE NORTHERNER—DAILY**

**Sleeping Car**  
Detroit and Mackinaw City (17 Roomette)

**Coach**  
Detroit and Mackinaw City

**No. 351—EX. SUN.—NORTHBOUND**

**Sleeping Car**  
Chicago to Bay City (10 Roomette-6 Double Bedroom)  
—From No. 358 at Jackson

**Coach**  
Jackson to Bay City

**No. 352—EX SAT.—SOUTHBOUND**

**Sleeping Car**  
Bay City to Chicago (10 Roomette-6 Double Bedroom)  
—In No. 315 from Jackson

**Coach**  
Bay City to Jackson

**No. 355—THE MICHIGAN—DAILY—WESTBOUND**

**Parlor Car—Sleeper as Parlor Car**  
Detroit to Chicago

**Diner Lounge**  
Detroit to Chicago

**Coaches**  
Detroit to Chicago (Reclining Seat)

**No. 358—THE CANADIAN-NIAGARA—DAILY EASTBOUND**

**Lounge Sleeping Car**  
Chicago to Buffalo via Niagara Falls (6 Double Bedroom-Buffer)  
Buffet Breakfast Service into Buffalo

**Sleeping Cars**  
Chicago to Buffalo via Niagara Falls (22 Roomette)  
Chicago to Toronto (10 Roomette-5 Double Bedroom) — In C. P. Ry. No. 20 from Detroit  
Chicago to Toronto (10 Roomette-6 Double Bedroom)  
Chicago to Bay City, Ex. Sat. (10 Roomette-6 Double Bedroom)—In No. 351 from Jackson  
Detroit to Buffalo via Niagara Falls, Ex. Sat. Night-Sun. Morn. (22 Roomette). Will not operate a.m.'s of Nov. 29, 30; Dec. 23, 24, 25, 26, 30, 31; Jan. 1 or April 5

**Coaches**  
Chicago to Buffalo via Niagara Falls  
Chicago to Toronto—In C. P. No. 20 from Detroit

**No. 371 } —THE ONTARIAN—DAILY**  
**No. 373 }**

**Sleeping Cars**  
New York to Toronto (10 Roomette-6 Double Bedroom)—Two  
New York to Toronto, Ex. Sat. (13 Double Bedroom) } From No. 57 at Buffalo Ex. Sun. From No. 21 Sun. and a.m.'s of Nov. 29, 30; Dec. 23, 24, 25, 30, 31 and Jan. 1

Boston to Toronto (10 Roomette-6 Double Bedroom)—  
From No. 33 at Buffalo  
Cleveland to Toronto, Ex. Sat. Night-Sun. Morn. (22 Roomette)—From No. 24 at Buffalo  
Pittsburgh to Toronto, Ex. Sat. (10 Roomette-5 Double Bedroom)—From F. & L. E. No. 7 at Youngstown—N. Y. C. No. 272 Ashabula—No. 24 at Buffalo

**Diner Lounge**  
Buffalo to Toronto

**Coaches**  
New York to Toronto—From No. 57-21 at Buffalo  
Buffalo to Toronto

**No. 374—TORONTO-BUFFALO EXPRESS—DAILY EASTBOUND**

**Parlor Cafe Car (Can. Pac. Ry. owned and operated)**  
Toronto to Buffalo

**Coaches**  
Toronto to New York—In No. 98 from Buffalo  
Toronto to Buffalo

**No. 375—WESTBOUND**  
**No. 376—EASTBOUND**

**THE CHICAGO MERCURY—DAILY**  
**ALL SEATS IN PARLOR CARS AND COACHES ARE RESERVED**

**Parlor Car (N. Y. C. Car) (Observation—Eastbound only)**  
Chicago to Detroit

**Dining Service**

**Lounge Coach (Beverages)**  
Detroit and Chicago

**Reclining Seat Coaches—Porter Service**  
Detroit and Chicago

**No. 377—BUFFALO-TORONTO EXPRESS—DAILY WESTBOUND**

**Sleeping Car**  
New York to Toronto (10 Roomette-6 Double Bedroom)  
—From No. 98 at Buffalo weekdays; No. 29 on Sundays and mornings of Nov. 29, 30; Dec. 23, 24, 25, 30, 31 and Jan. 1

**Coach**  
Buffalo to Toronto

**PULLMAN, COACH AND DINING CAR SERVICE**  
**TRAINS NOT SHOWN CARRY COACHES ONLY**  
Regularly assigned cars are air-conditioned

**No. 382—THE ONTARIAN—DAILY—EASTBOUND**

**Sleeping Cars**  
Toronto to New York (10 Roomette-6 Double Bedroom)—Three } In No. 16 from Buffalo  
Toronto to New York, Ex. Sat. (13 Double Bedroom)  
Toronto to Pittsburgh, Ex. Sat. (10 Roomette-5 Double Bedroom)—In No. 279 from Buffalo; P. & L. E. No. 39 from Youngstown

Toronto to Cleveland, Ex. Sat. (22 Roomette)—In No. 67 from Buffalo—On Nov. 29, 29; Dec. 22, 23, 24, 29, 30 and 31 will operate in No. 21 from Buffalo  
Toronto to Boston (10 Roomette-6 Double Bedroom)—  
In No. 23 from Buffalo

**Diner Lounge**  
Toronto to Buffalo

**Coach**  
Toronto to Buffalo  
Toronto to New York—In No. 16 from Buffalo

**No. 383—BUFFALO-TORONTO EXPRESS—DAILY WESTBOUND**

**Parlor Cafe Car (Can. Pac. Ry. owned and operated)**  
Buffalo to Toronto

**Coaches**  
New York to Toronto—From No. 98 at Buffalo  
Buffalo to Toronto

**No. 402—STATE SPECIAL—EASTBOUND**

**Grill Lounge (Beverages-Sandwiches-Hot Meals)**  
Cincinnati to Cleveland

**Coaches**  
Cincinnati to Cleveland

**No. 406—CAROLINA SPECIAL—DAILY—EASTBOUND**

**Sleeping Cars**  
Chicago to Asheville, N. C. (10 Roomette-6 Double Bedroom)—In Sou. Ry. No. 27 from Cincinnati

**Grill Lounge (Beverages-Sandwiches-Hot Meals)**  
Chicago to Cincinnati

**Coaches**  
Chicago to Cincinnati

**No. 407—THE MISSOURIAN—DAILY—WESTBOUND**

**Beverage Lounge Parlor Car—Sleeper as Parlor Car**  
Cleveland to St. Louis

**Coaches**  
Cleveland to St. Louis

**No. 408—THE MISSOURIAN—DAILY—EASTBOUND**

**Sleeping Cars**  
St. Louis to Buffalo (10 Roomette-6 Double Bedroom)  
—In No. 30 from Cleveland  
St. Louis to Detroit (22 Roomette)—In No. 302 from Bellefontaine  
St. Louis to Cleveland (10 Roomette-5 Double Bedroom)

**Diner Lounge**  
St. Louis to Indianapolis

**Coaches**  
St. Louis to New York (Reclining Seat)—In No. 30 from Cleveland  
St. Louis to Cleveland  
St. Louis to Detroit—In No. 302 from Bellefontaine

**No. 415—THE BOOTH TARKINGTON—DAILY WESTBOUND**

**Grill Lounge (Beverages-Sandwiches-Hot Meals)**  
Cincinnati to Chicago

**Coaches**  
Cincinnati to Chicago

**No. 416—THE MIDWESTERN—DAILY**

**Sleeping Car**  
Cincinnati to Buffalo (22 Roomette)—In No. 24 from Cleveland

**Grill Lounge (Beverages-Sandwiches-Hot Meals)**  
Chicago to Cleveland (via Cincinnati)

**Coaches**  
Chicago to Cleveland (via Cincinnati)

**No. 417—MIDNIGHT SPECIAL—DAILY—WESTBOUND**

**Sleeping Cars**  
Cleveland to Cincinnati, Ex. Sat. (22 Roomette)  
Cleveland to Cincinnati (22 Roomette)  
Buffalo to Cincinnati, Ex. Sat. (10 Roomette-5 Double Bedroom) — From No. 40 at Cleveland

**Coaches**  
Cleveland to Cincinnati

**No. 421—THE MIDWESTERN—DAILY—WESTBOUND**

**Grill Lounge (Beverages-Sandwiches-Hot Meals)**  
Cleveland to Chicago (via Cincinnati)

**Coaches**  
Cleveland to Chicago (via Cincinnati)

**No. 427—THE GATEWAY—DAILY**

**Sleeping Car**  
Buffalo to St. Louis, Ex. Sat. (10 Roomette-6 Double Bedroom)—From No. 31 at Cleveland

**Coaches**  
Cleveland to St. Louis

**No. 433—CLEVELAND-CINCINNATI SPECIAL—DAILY WESTBOUND**

**Grill Lounge (Beverages, Sandwiches and Hot Meals)**  
Cleveland to Cincinnati

**Coaches**  
Cleveland to Cincinnati

**No. 438-410—DAILY—EASTBOUND**

**Lounge Sleeping Car**  
Chicago to Cincinnati (6 Double Bedroom-Buffer)  
Buffet Breakfast Service into Cincinnati

**Sleeping Cars**  
Chicago to Cincinnati (10 Roomette-6 Double Bedroom)  
Chicago to Cincinnati, Ex. Sat. (22 Roomette)

**Coaches**  
Chicago to Cincinnati

**No. 442—NIGHT SPECIAL—DAILY—EASTBOUND**

**Sleeping Cars**  
Cincinnati to Buffalo, Ex. Sat. (10 Roomette-5 Double Bedroom) — In No. 98 from Cleveland  
Cincinnati to Cleveland (22 Roomette)  
Cincinnati to Cleveland, Ex. Sat. (22 Roomette)  
Clifton Forge, Va. to Cleveland, Ex. Sat. (10 Roomette-6 Double Bedroom)—From C. & O. No. 47 at Columbus

**Coaches**  
Cincinnati to Cleveland

**No. 443-437—DAILY—EASTBOUND**

**Lounge Sleeping Car**  
Cincinnati to Chicago (6 Double Bedroom-Buffer)

**Sleeping Cars**  
Cincinnati to Chicago (10 Roomette-6 Double Bedroom)  
Cincinnati to Chicago, Ex. Sat. (22 Roomette)

**Coaches**  
Cincinnati to Chicago

**No. 445—CAPITAL CITY SPECIAL—EX. SAT. WESTBOUND**

**Sleeping Car**  
Cleveland to Clifton Forge, Va. (10 Roomette-6 Double Bedroom)—In C. & O. No. 45-246 from Columbus

**Coach**  
Cleveland to Columbus

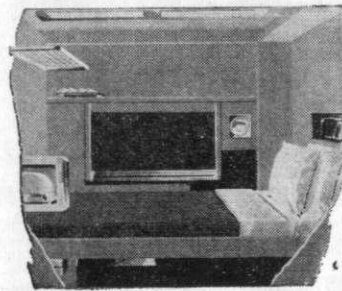


## These private rooms invite you to take it easy traveling on the NEW YORK CENTRAL

### Roomette for 1 Person

The Roomette is a cozy personal sitting room or private office by day or evening. It is equipped with a big, comfortable sofa seat. Wide-view windows.

At night, a deep-mattressed, six-foot-plus, premade bed opens out of the wall and locks quickly in place.



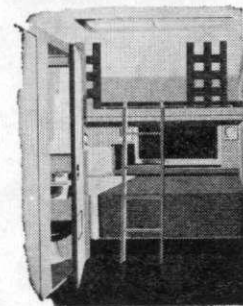
A Roomette has complete washing and toilet facilities. There are individual controls for lights, heat and air conditioning. Big mirror for shaving or make-up. The door can be locked from the inside for complete privacy for lounging or sleeping in restful comfort.



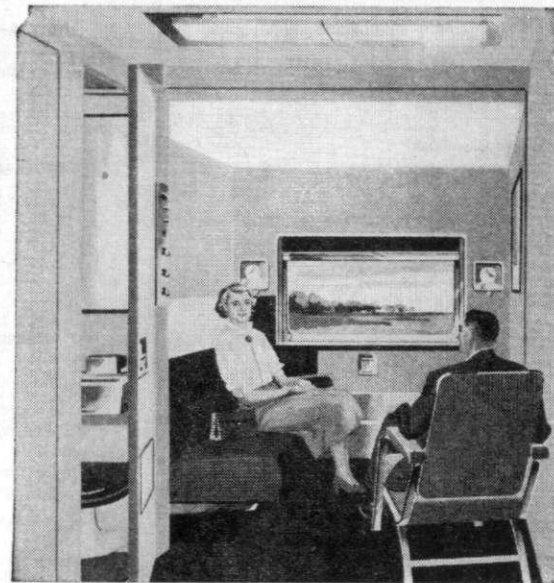
### Bedroom for 1 or 2 Persons

By day, a Bedroom offers ample space for two persons or extra spaciousness for one. It is equipped with a contoured sofa seat and a folding lounge chair with armrest.

By night, the lower bed is drawn out of the wall behind the sofa. The upper bed moves down from the ceiling.



Other features include complete washing and toilet facilities, in many instances separately enclosed. Also included is a wardrobe locker, individual controls for air conditioning, heating and lights, big picture window.



### Bedroom Suite for Larger Parties

Suites are two Double Bedrooms, divided by a partition which may be folded out of the way to form a suite for a family or business party traveling together.

## 3 ways to save

—on the  
New York Central



**1. Family-Fare Plan**—When one parent pays regular round-trip fare—the other parent and children ages 12-21 pay only one-way fare for round-trip! Youngsters under 12 go round-trip for only half the one-way fare. Small fry under 5 go scot-free, of course. Return limit three months.

**Husband-Wife Plan**—Take her along and turn a business trip into a pleasure trip! She goes round-trip for only the one-way fare when you pay regular round-trip fare. Return limit three months.

**2. Regular Round-Trip**—Longer trips mean bigger savings! Tickets are good up to 6 months, going and returning. Entitle you to generous stopovers along the way.

**3. Group-Fare Plan**—Saves 25% for 3 or more adults traveling round-trip together in coaches. Round-trip must be completed within 30-day period.

**NOTE:** Family-Fare Plans apply to round-trip Coach or Pullman travel to any point on the New York Central to which adult one-way Coach fare is \$1.66 or more, plus tax. They are good any day of the week, on any train. However, to destinations west of Chicago, Ill., St. Louis, Mo., Memphis, Tenn., or New Orleans, La., journey must begin from original starting point on Monday through Thursday. Your ticket agent or travel agent can give you full details.



RAILROAD AND PULLMAN FARES—Subject to change

(10% Federal Tax Not Included)

Table with columns: BETWEEN, RAIL TICKET FARES (One Way, Round Trip 6-Mo. Limit), SLEEPING CAR FARES (One Way, Room-ette, Bedroom, Bedroom Suite), and Reserved Coach Seat Charge. Rows include cities like Boston, Buffalo, Chicago, Cleveland, Columbus, Dayton, Detroit, Erie, Indianapolis, Pittsburgh, Rochester, St. Louis, Syracuse, Toledo, Toronto.

Expert Help is as near as your Telephone



New York Central Passenger and Freight Sales Representatives are listed on page 48 and the inside back cover of this time table.

Whether your problem concerns travel for one passenger or a group—or shipping a single package or a carload—these men stand ready and eager to help you.

For service—call Central!

RAILROAD AND PULLMAN FARES—Subject to change

(10% Federal Tax Not Included)

Table with columns: BETWEEN, RAIL TICKET FARES (One Way, Round Trip 6-Mo. Limit), SLEEPING CAR FARES (One Way, Room-ette, Bedroom, Bedroom Suite), and Reserved Coach Seat Charge. Rows include cities like Detroit, Indianapolis, New York, St. Louis, Toledo, Toronto, Buffalo, Boston, Chicago, Cleveland, Columbus, Dayton, Erie, Indianapolis, Pittsburgh, Rochester, St. Louis, Syracuse, Toledo, Toronto.

Twentieth Century Limited SPECIAL FEATURES

Special Service Features:

CLUB LOUNGE CAR

Hostess-Secretary, Barber, Valet, Dictaphone, Showerbath, Radio, Telephone, Magazines, Newspapers, Stationery.

OBSERVATION LOUNGE CAR

Radio, Magazines, Newspapers, Stationery; also Telephone service prior to departure.

Special Service Charges:—

Subject to 10% Federal Tax.

Between New York and Englewood—Chicago \$7.50

Between Harmon and Englewood—Chicago 7.30

From Albany to Englewood—Chicago.. 6.40

Telephone Service to or from the Century:—

To call from the Century, normal coin box operation.

To call to the Century, ask Long Distance for a person to person call to your party, and specify the eastbound or westbound train. Passengers can be called at any time the trains are enroute.

Table with columns: MINIMUM NUMBER OF RAILROAD TICKETS (Valid in All Classes of Pullman Accommodations) ALSO SPECIAL SERVICE CHARGE TICKETS ON 20TH CENTURY LIMITED REQUIRED FOR EXCLUSIVE OCCUPANCY OF PULLMAN SPACE INDICATED. Rows include Roomette, Single or Double Bedroom, Bedroom Suite, Berth Service, Compartment Berth Service.

REFERENCE NOTES FOR FARE PAGES. Will also apply for one adult and a child (or children) under 5 years of age for whom no railroad transportation is required. Except when holding Family Plan tickets—Bedroom 1 1/2, Compartment 1 1/2, Bedroom Suite Berth Service 2 1/2. Drawing-rooms in parlor cars will be charged for at rate of three times the seat fare with an additional seat fare for each passenger five years of age or older, in excess of three.



# NEW YORK CENTRAL SYSTEM

## GENERAL OFFICES — PASSENGER SALES DEPARTMENT

E. C. NICKERSON, Vice-Pres., Passenger Sales and Service, 466 Lexington Ave., New York 17, N. Y.

S. W. BONE, Passr. Sales Mgr., LaSalle St. Station, Chicago 5, Ill.  
R. R. SPANGENBERG, Passr. Sales Mgr., 466 Lexington Ave., New York 17, N. Y.  
C. FENDRYCH, Passr. Sales Mgr., NYC-P&L, Terminal Tower, Cleveland 13, Ohio

IRA G. RASP, Passr. Sales Mgr., South Station, Boston 10, Mass.  
A. A. MEYER, Dir. Passr. Fares & Divns., 466 Lexington Ave., New York 17, N. Y.  
C. A. RIEBLING, Mgr., Baggage Service, Central Terminal, Buffalo 12, N. Y.

## INFORMATION — RESERVATIONS — TICKET OFFICES — SALES REPRESENTATIVES

	Telephone Nos.
<b>Albany 7, N. Y.</b>	
Information and Reservations	62-3351
Ticket Office: Union Station	62-3351
J. P. Sweeney, Asst. Passr. Sales Mgr., Union Station	5-6211
<b>Boston 10, Mass.</b>	
Information	HUBbard 2-6500
Reservations	HUBbard 2-6800
Ticket Offices: South Station	
Trinity Place Station	
H. K. Genett, Div. Passr. Sales Mgr., South Station	HUBbard 2-7200
<b>Buffalo 12, N. Y.</b>	
Information and Reservations	MOhawk 6800
Ticket Offices: Central Terminal	
Exchange Street Station	
W. P. Knowlden, Divn. Passr. Sales Mgr., Central Terminal	MADison 3400
<b>Chicago 5, Ill.</b>	
Information	WABash 2-8700
Reservations	HARRison 7-4270
Ticket Offices: LaSalle St. Station	
Central Station	
Woodlawn (63rd St.)	
Englewood	
Hotel Ticket Offices	HARRison 7-2203
Prudential Bldg., Prudential Plaza	
Merchandise Mart, 222 North Bank Drive	
Morrison Hotel, Clark and Madison Streets	
Palmer House, State and Monroe Streets	
Sherman Hotel, Clark and Randolph Streets	
Conrad Hilton Hotel, 720 So. Michigan Ave.	
Knickerbocker Hotel, Walton Place	
T. E. Nerland, Asst. Passr. Sales Mgr., LaSalle St. Station	WABash 2-4200
<b>Cincinnati 2, Ohio</b>	
Information	DUNbar 1-6310
Reservations	DUNbar 1-6300
Ticket Offices:	
Union Terminal	
Winton Place	
J. R. Barker, Asst. Passr. Sales Mgr., 230 East Ninth St.	DUNbar 1-3540
<b>Cleveland 13, Ohio</b>	
Information	CHerry 1-8200
Reservations	MAIn 1-2300
Ticket Offices:	
Union Terminal	
East Cleveland	
Linndale	
P. J. Desilets, Div. Passr. Sales Mgr., Terminal Tower Bldg.	PROspect 1-5000
<b>Columbus 15, Ohio</b>	
Information and Reservations	CAPital 8-6881
Ticket Office: Union Depot	
R. T. Martin, Divn. Passr. Sales Mgr., Union Depot	CAPital 4-1212
<b>Dayton 2, Ohio</b>	
Information and Reservations	EMerson 2351
Ticket Office: Union Depot	
E. J. David, Divn. Passr. Sales Mgr., Union Depot	ADams 4141
<b>Detroit 16, Mich.</b>	
Information and Reservations	WOodward 5-7070
Ticket Offices: M. C. R. R. Terminal	
3044 West Grand Blvd.	
O. J. Steinhardt, Divn. Passr. Sales Mgr., M. C. R. R. Terminal	TASHmoo 5-7000
J. C. Charters, Dist. Passr. Sales Mgr., M. C. R. R. Terminal	
<b>Erie, Pa.</b>	
Information and Reservations	22-224
Ticket Office: Union Station	
D. E. Ulrich, Passr. Sales Rep., Union Station	22-224
<b>Grand Rapids, Mich.</b>	
Information and Reservations	GLEndale 8-0227
Ticket Office, 115 William St. S. W.	GLEndale 8-0227
<b>Indianapolis 25, Ind.</b>	
Information and Reservations	MEIrose 5-3355
Ticket Office: Union Station	
L. J. Hennessey, Asst. Passr. Sales Mgr., Union Station	MEIrose 2-8321
<b>Lafayette, Ind.</b>	
Information and Reservations	2-3076
Ticket Office: Big Four Station	
F. R. Mink, Passr. Sales Representative, Big Four Station	2-3076

	Telephone Nos.
<b>Los Angeles 14, Calif.</b>	
Richard Mercer, Dist. Passr. Sales Mgr., 424 Van Nuys Bldg.	TRinity 7194
<b>Mexico City, Mex.</b>	
Manuel Munoz, Jr., Passr. Sales Mgr., Madero 34, Despacho 14	21-62-18
<b>Montreal 2, Que.</b>	
J. B. Finucane, Can. Passr. Sales Mgr., Dominion Square Bldg.	UNiversity 6-9956
<b>New York, N. Y.</b>	
Information	MURray Hill 6-9100
Reservations	MURray Hill 7-6600
Ticket Offices: Grand Central Terminal	
17 John St.	
125th St. Station	
J. W. Higgins, Asst. Passr. Sales Mgr., 466 Lexington Ave.	MURray Hill 9-8000
<b>Niagara Falls, N. Y.</b>	
Information and Reservations	6671
Ticket Office: N. Y. C. R. R. Station	
E. C. Korb, District Passr. Sales Mgr., N. Y. C. R. R. Station	6671
<b>Pittsburgh 19, Pa.</b>	
Information and Reservations	COurt 1-3201
Ticket Office: P. & L. E. R. R. Terminal	
J. G. Ronald, Divn. Passr. Sales Mgr., P. & L. E. R. R. Terminal	COurt 1-3201
<b>Rochester 5, N. Y.</b>	
Information and Reservations	HAMilton 6-4350
Ticket Office: N. Y. C. R. R. Station	
C. H. Ditzel, Dist. Passr. Sales Mgr., N. Y. C. R. R. Station	HAMilton 6-4200
<b>St. Louis 2, Mo.</b>	
Information	GENeva 6-2500
Reservations	GARfield 1-6600
Ticket Office: Union Station	
T. R. Ruth, Asst. Passr. Sales Mgr., 320 No. Broadway	MAIn 1-4288
F. W. Trinka, Dist. Passr. Sales Mgr., 320 No. Broadway	
<b>San Francisco 5, Calif.</b>	
L. W. Oilmann, Dist. Passr. Sales Mgr., 523 Monadnock Bldg.	EXbrook 2-3682
<b>South Bend, Ind.</b>	
Information and Reservations	ATlantic 9-5534
Ticket Office: N. Y. C. R. R. Station	
M. C. Aldrich, Ticket Agent	ATlantic 9-5534
<b>Springfield 3, Mass.</b>	
Information and Reservations	REpublic 4-7341
Ticket Office: Union Station	
R. D. Fuller, Dist. Passr. Sales Mgr., Union Station	REpublic 6-5431
<b>Springfield, Ohio</b>	
Information and Reservations	3-9714
Ticket Office: N. Y. C. R. R. Station	
S. S. Collins, Passr. Sales Representative, N. Y. C. R. R. Station	3-9714
<b>Syracuse 3, N. Y.</b>	
Information and Reservations	GRanite 6-9981
Ticket Office: N. Y. C. R. R. Station	
C. O. B. Brown, Divn. Passr. Sales Mgr., N. Y. C. R. R. Station	GRanite 6-5541
<b>Toledo 4, Ohio</b>	
Information and Reservations	CHerry 4-7421
Ticket Office: Central Union Terminal	
C. G. Pelletier, Divn. Passr. Sales Mgr., Central Union Terminal	CHerry 2-5761
<b>Toronto 1, Ont.</b>	
W. K. Parkinson, Can. Passr. Sales Rep.,	
1006 Canadian Pacific Bldg.	EMpire 4-5988
<b>Utica, N. Y.</b>	
Information and Reservations	4-3171
Ticket Office: N. Y. C. R. R. Station	
E. F. McGrath, Ticket Agent	4-2111
<b>Worcester 8, Mass.</b>	
Information and Reservations	PLEasant 7-5611
Ticket Office: Union Station	
<b>Youngstown 6, Ohio</b>	
Information and Reservations	RIverside 34151
Ticket Office: N. Y. C. R. R. Station	
R. S. Dean, Passr. Sales Representative, N. Y. C. R. R. Station	RIverside 34151

# NEW YORK CENTRAL SYSTEM

## Freight Sales & Service Department

A. E. BAYLIS, Vice President, Freight Sales and Service, 466 Lexington Ave., New York 17, N. Y.  
J. E. HAWTHORNE, Asst. Vice Pres., System, 466 Lexington Ave., New York 17, N. Y.  
D. S. MACKIE, Asst. Vice Pres., Freight Sales and Service, LaSalle St. Sta., Chicago 5, Ill.  
W. M. SNOW, Asst. Vice Pres., Freight Sales and Service, 466 Lexington Ave., New York 17, N. Y.  
C. W. SUNDERBRINK, Asst. Vice Pres., Frt. Sales and Service, Terminal Tower Bldg., Cleveland 13, O.  
G. H. INGALLS, Asst. Vice Pres., Freight Sales and Service, Michigan Central Term., Detroit 16, Mich.  
J. H. NORWOOD, Asst. Vice Pres., Freight Sales and Service, 230 East 9th St., Cincinnati 2, O.  
J. C. PATTEN, Asst. Vice Pres., Freight Sales and Service, South Station, Boston 10, Mass.  
T. R. FITZPATRICK, Asst. Vice Pres., Frt. Sales and Ser., N. Y. C. P. & L. E. R. R., Pittsburgh 19, Pa.  
H. L. WILLARD, Director of Coal Sales, 466 Lexington Ave., New York 17, N. Y.  
J. B. JEROME, Director of Foreign Freight Sales, 25 Broadway, New York 4, N. Y.  
G. T. MAGEE, Freight Sales Manager, 408 Pine Street, St. Louis 2, Mo.

Albany 7, N. Y.	J. M. Donovan, Div. Frt. Sales Mgr.	5-6211
Union Station		
Atlanta 3, Ga.	Paul Briant, Dist. Frt. Sales Mgr.	JACKson 4-4521
508 Volunteer Bldg.		
Baltimore 2, Md.	J. F. Jones, Dist. Frt. Sales Mgr.	
904-5 Mercantile Trust Bldg.	W. C. Reynolds, Dist. Frt. Sales Mgr.	PLAZa 2-6650
Bay City, Mich.	F. E. Charlipar, Div. Frt. Sales Mgr.	TWINbrook 5-5581
Birmingham 3, Ala.	P. F. Eiland, Dist. Frt. Sales Mgr.	ALPine 1-6678
325 Frank Nelson Bldg.		
Boston, Mass.		
South Station	G. W. Stiglich, Div. Frt. Sales Mgr.	HUBbard 2-7200
1121 North Station	M. T. Moran, Dist. Frt. Sales Mgr.	HUBbard 2-7861
177 Milk Street	A. M. Brown, Foreign Frt. Sales Mgr.	HANeok 6-7970
Buffalo 12, N. Y.	S. A. R. Laneto, Div. Frt. Sales Mgr.	MADison 3400
Central Terminal	F. J. Reagan, Dist. Frt. Sales Mgr.	
Charleston 1, W. Va.	R. M. Cornell, Div. Frt. Sales Mgr.	2-1531
Chicago 5, Ill.	C. M. Indra, Div. Frt. Sales Mgr.	2-1543
LaSalle St. Station	J. E. Lonn, Foreign Frt. Sales Mgr.	WABash 2-4200
Cincinnati 2, Ohio	F. O. Stein, Dist. Frt. Sales Mgr.	
230 East Ninth Street	T. H. Willings, Div. Frt. Sales Mgr.	DUNbar 1-3540
Cleveland 13, Ohio	E. M. Johns, Div. Frt. Sales Mgr.	PROspect 1-5000
Terminal Tower Bldg.		
Columbus, Ohio	C. C. Sampson, Div. Frt. Sales Mgr.	CA-4-1212
418 North High Street		
Dallas 1, Tex.	J. L. Sturtz, Dist. Frt. Sales Mgr.	RIverside 1-9138
1010 Kirby Bldg.		
Davenport, Iowa	W. A. Hillman, Dist. Frt. Sales Mgr.	2-3682
904 Kahi Bldg.		
Dayton 2, Ohio	T. J. Davis, Div. Frt. Sales Mgr.	ADams 4141
Denver 2, Colo.	I. G. Evans, Dist. Frt. Sales Mgr.	TABor 5-3306
701-703 Guaranty Bank Bldg.		
Detroit 16, Mich.	R. T. Mason, Asst. Frt. Sales Mgr.	
M. C. Terminal	D. B. Zellers, Div. Frt. Sales Mgr.	TASHmoo 5-7000
East St. Louis, Ill.	L. C. Wheeler, Dist. Frt. Sales Mgr.	MAIn 1-4288
Office 408 Pine Street, St. Louis, Mo.	A. C. Schaeffer, Asst. Dist. Frt. Sales Mgr.	MAIn 1-4288
Erie, Pa.	J. F. Weibel, Dist. Frt. Sales Mgr.	4-0111
Evansville 8, Ind.	R. N. Cramer, Dist. Frt. Sales Mgr.	HARRison 2-9855
522 Court Bldg.		
Grand Rapids 2, Mich.	L. A. Cummings, Div. Frt. Sales Mgr.	GL 9-4114
704 Michigan National Bank Bldg.		
Houston 2, Tex.	F. C. Franklin, Dist. Frt. Sales Mgr.	FAIrtax 3-9301
525 Bankers Mortgage Bldg.		
Indianapolis 4, Ind.	R. A. Barnett, Asst. Frt. Sales Mgr.	MEIrose 2-8321
901 Lemcke Bldg.	F. J. Kiefer, Div. Frt. Sales Mgr.	
Jacksonville 2, Fla.	H. B. Gibbs, Dist. Frt. Sales Mgr.	3-6241
1125 Barnett Natl. Bank Bldg.		
Kalamazoo 1, Mich.	J. L. Moon, Div. Frt. Sales Mgr.	FLeside 3-1219
Kankakee, Ill.	W. A. Kraus, Div. Frt. Sales Mgr.	2-2932
314 City Natl. Bank Bldg.		
Kansas City 5, Mo.	D. M. Dillingham, Dist. Frt. Sales Mgr.	VIctor 2-6384
1215 Fairfax Bldg.		
Lansing, Mich.	J. Traskie, Dist. Frt. Sales Mgr.	IV-4-0316
703 E. Michigan Ave.		
London, Ont.	M. W. Fysh, Gen. Agent	4-2292
Los Angeles 14, Calif.	A. J. Lacombe, Dist. Frt. Sales Mgr.	TUcker 8107
424 Van Nuys Bldg.		
Louisville 2, Ky.	J. P. Roth, Div. Freight Sales Mgr.	JUNiper 4-7311
103 No. Preston St.		
Memphis 3, Tenn.	N. E. Fields, Dist. Frt. Sales Mgr.	JACKson 6-0160
1101 Exchange Bldg.		

Mexico City, Mex.	Manuel Munoz, Jr., Frt. Sales Mgr.	21-62-18
Madero 34, Despacho 14		18-21-61
Milwaukee 3, Wis.	V. T. Winings, Dist. Frt. Sales Mgr.	BRoadway 6-5660
1016 Majestic Bldg.		
Minneapolis 2, Minn.	J. R. Teasdale, Dist. Frt. Sales Mgr.	FEDeral 3-5291
409 Lexington Ave.		
Montreal 2, Que.	J. B. Finucane, Canadian Frt. Sales Mgr.	UNiversity 6-9956
Dominion Square Bldg.	L. P. Gauvin, Dist. For. Frt. Salesman	6-9956
Newark 2, N. J.	E. E. Lindauer, Dist. Frt. Sales Mgr.	MARKet 2-4560
9 Clinton St.		
New Haven 10, Conn.	C. E. Zeender, Dist. Frt. Sales Mgr.	MAIn 4-5173
129 Church St.		
New Orleans 12, La.	H. J. Schullingkamp, Dist. Frt. Sales Mgr.	RAYmond 0697
910 National Bank of Commerce Bldg.		
New York 17, N. Y.		
466 Lexington Ave.	E. D. Snow, Frt. Sales Mgr.	MURray Hill 9-8000
409 Lexington Ave.	O. H. Grimm, Div. Frt. Sales Mgr.	MURray Hill 9-0100
466 Lexington Ave.	J. P. Brady, Div. Frt. Sales Mgr.	MURray Hill 9-0100
New York 4, N. Y.	F. J. Donovan, For. Frt. Sales Mgr.	BOWling Green 9-5800
25 Broadway		
Norfolk 10, Va.	W. K. Secrest, Dist. Frt. Sales Mgr.	MADison 2-7741
109 Royster Bldg.		
Omaha 2, Neb.	D. O. Rasmussen, Dist. Frt. Sales Mgr.	ATlantic 8900
1019 City National Bank Bldg.		
Peoria, Ill.	A. A. Aucther, Div. Frt. Sales Mgr.	4-9127
919 Commercial Natl. Bank Bldg.		
Philadelphia 2, Pa.	W. H. Feinle, Dist. Frt. Sales Mgr.	LOCust 4-6140
906 Finance Bldg.	M. V. Petticoord, Dist. For. Frt. Salesman	
Pittsburgh 19, Pa.	E. N. Smith, Div. Frt. Sales Mgr.	COurt 1-3201
P. & L. E. Terminal		
Portland 4, Ore.	T. C. Olsen, Dist. Frt. Sales Mgr.	CAPitol 8-3169
705 Pacific Bldg.		
Rochester 5, N. Y.	D. A. Chisholm, Dist. Frt. Sales Mgr.	HAMilton 4200
N. Y. C. R. R. Sta.		
St. Louis 2, Mo.	C. J. Hucabee, Asst. Frt. Sales Mgr.	MAIn 1-4288
408 Pine Street		
St. Thomas, Ont.	J. A. Machan, Div. Freight Sales Mgr.	1160 M. C. Station
Saginaw, Mich.	J. J. Walsh, Dist. Frt. Sales Mgr.	PLEasant 2-8177
San Francisco 5, Calif.	R. E. Kulp, Dist. Frt. Sales Mgr.	EXbrook 2-4860
523 Monadnock Bldg.		
Seattle 1, Wash.	H. W. Miller, Dist. Frt. Sales Mgr.	MAIn 2-8939
512 White Bldg.		
South Bend 21, Ind.	G. H. Frank, Dist. Frt. Sales Mgr.	AT-8-4141
Springfield 3, Mass.	K. L. Guyton, Div. Frt. Sales Mgr.	6-5431
Union Station		
Syracuse 2, N. Y.	J. P. Huppmann, Div. Frt. Sales Mgr.	GRanite 6-5541
920 Erie Blvd., East		
Terre Haute, Ind.	G. T. Sullivan, Div. Frt. Sales Mgr.	CRawford 6043
N. Y. C. Station		
Toledo 4, Ohio	J. L. Robinson, Div. Frt. Sales Mgr.	CHerry 2-5761
1 Monroe St.		
Toronto 1, Ont.	C. P. Gregory, Dist. Frt. Sales Mgr.	EMpire 4-8173
1006 Canadian Pacific Bldg.		
Tulsa 3, Okla.	W. B. Wilson, Dist. Frt. Sales Mgr.	CHerry 2-9092
445 Kennedy Bldg.		
Utica, N. Y.	J. C. Owens, Dist. Frt. Sales Mgr.	4-2111
Washington 5, D. C.	E. H. Churchill, Asst. to Vice Pres., Frt. Sales & Service	NAtional 8-2500
225 Shoreham Bldg.		
Watertown, N. Y.	P. L. Gilmer, Dist. Frt. Sales Mgr.	2100
Windsor, Ont.	B. J. MacDonald, Dist. Frt. Sales Mgr.	CL-3-5211
302 Canada Bldg.		
Winston-Salem, N. C.	F. L. Sale, Dist. Frt. Sales Mgr.	PARK 2-8333
1400 Reynolds Bldg.		
Worcester 8, Mass.	H. F. Wiesel, Div. Frt. Sales Mgr.	PLEasant 7-5611
Union Station		
Youngstown 6, Ohio	R. W. Lemon, Div. Frt. Sales Mgr.	RIverside 34151
N. Y. C. R. R. Sta.		

## EARLY BIRDS rush freight to Eastern Markets -- one day faster!



New York Central's fleet of "Early Bird" through-freight trains slash as much as 24 hours off old freight schedules to New York and Buffalo from the

Middle West. Shippers and consignees are cutting distribution costs on almost every kind of freight by routing shipments via Central "Early Birds."

Ask your New York Central Freight Salesman for a copy of the "Early Bird" timetable.



# GIVE YOUR REGARDS TO BROADWAY

*— in person*

## NEW YORK SIGHTSEEING "EASYWAY" TOUR

There's *always* something doing in New York! Shows . . . sports . . . museums . . . shops . . . the tallest buildings . . . the most charming little restaurants! "Easyway" Tours will take you on scheduled tours-about-town with a congenial group . . . or let you roam on your own. Tour rates apply whether you come alone, with a friend, or with your own group. Rates include transportation, hotel expenses, baggage tips, cost of scheduled trips and entertainment. No hidden charges.

## BILTMORE HIT-SHOW WEEKEND

Climb aboard a sleek New York Central streamliner and head for a big weekend on the Big Town—seeing shows, supper clubs . . . getting in on the things that native New Yorkers have to wait in line for. Special package rates include coach or sleeper service to and from New York, orchestra seats for two or more Broadway hits, nightclubbing, sight-seeing, accommodations at the fashionable Biltmore. Tour rates apply whether you want to go alone, with a friend, or with a group.

For full details and individual folders on New York Central "Easyway" Tours, see your TRAVEL AGENT or local TICKET AGENT.

## YOUR COACH IS WAITING

Step into your shiny, air-conditioned New York Central coach . . . *and relax!* Let the world's most experienced chauffeurs do the driving. No need to keep your eyes glued on a road. Let 'em droop lazily

while you snooze in the soft, reclining lounging chair we've saved for you. Or feast 'em on the constantly changing scenery outside your picture window. Twelve of our fast "name" trains offer you *deluxe*

*coach service.* (See page 3). And every Central coach train treats you to quiet, clean, worry-proof travel. Take the family (page 45 shows you ways to save while doing it) . . . take it easy . . . take the Central.