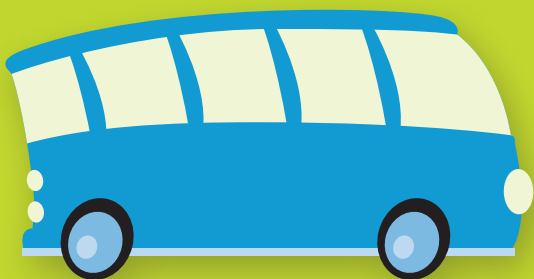


# You can't beat the bus!

## Will you be on-board?



**Catch the bus to Whanganui on the FIRST THURSDAY of every month or to Palmerston North on the THIRD THURSDAY of every month with Horizons Regional Council.**

Services arrive in Whanganui/Palmerston North (via Feilding) at 10.45am and depart for the return journey at 3.30pm.

	PICK UP POINT	APPROX PICK UP TIME	RETURN FARE*
Taihape	Railway Station	9.00am	\$28
	i-Site	9.05am	\$28
Ohingaiti	Opp Ohingaiti Hotel	9.25am	\$18
Huntermville	Opp Relish Café	9.40am	\$18
Marton	Bus shelter, Lower High St	10.00am	\$13
Turakina ( <i>Whanganui trip only</i> )	Intercity bus stop opp Mobil SH3	10.15am	\$10
Bulls ( <i>Palmerston North trip only</i> )	Information Centre	10.15am	\$10

\*SuperGold travel is **FREE** on the morning service only  
Under 5's travel **FREE**

Contact GoBus on **06 388 1427**  
or **021 281 1407** to find out more!