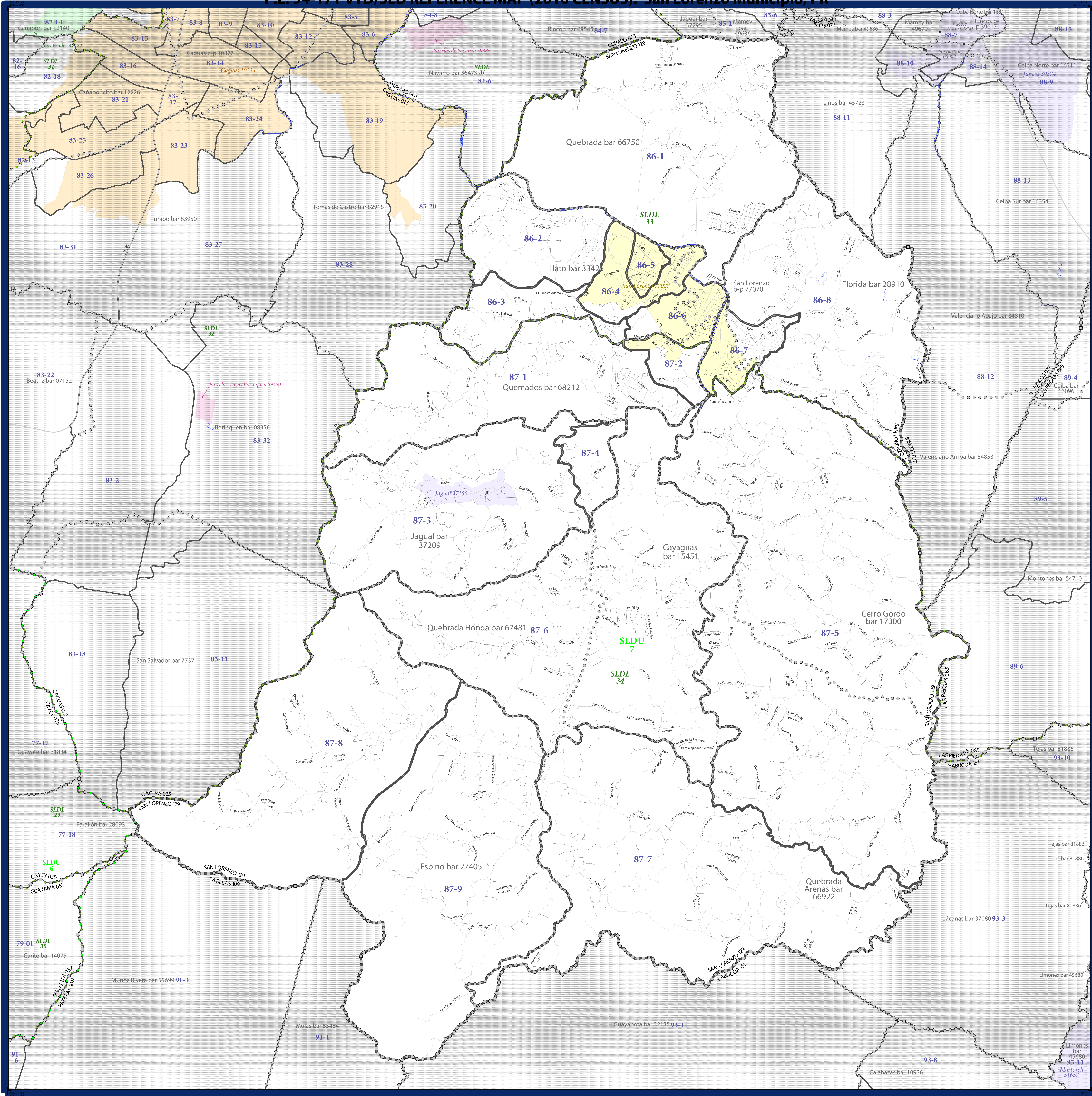
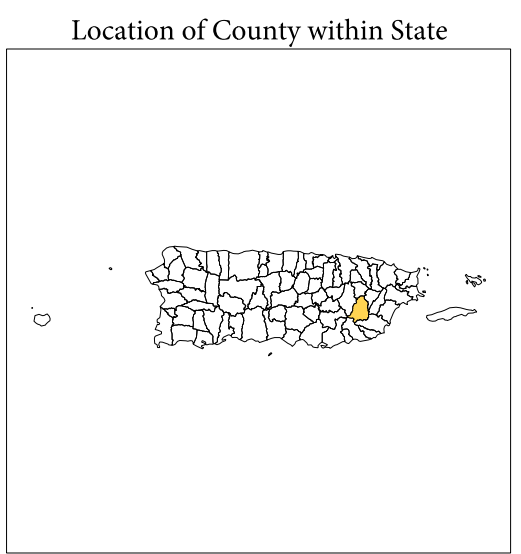


P.L. 94-171 VTD/SLD REFERENCE MAP (2010 CENSUS): San Lorenzo Municipio, PR



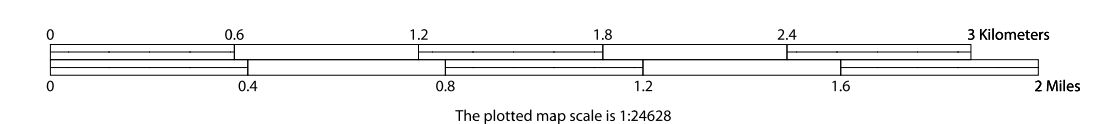
LEGEND	
SYMBOL DESCRIPTION	SYMBOL
Puerto Rico	▬▬▬▬▬▬
Municipio	▬▬▬▬▬▬
Barrio or Barrio-Pueblo	○ ○ ○ ○ ○ ○
Subbarrio	○ ○ ○ ○ ○ ○
Comunidad or Zona Urbana 1	▬▬▬▬▬▬
Voting District (VTD)	▬▬▬▬▬▬
State Legislative District - Upper (Senate)	▬▬▬▬▬▬
State Legislative District - Lower (House)	▬▬▬▬▬▬
DESCRIPTION	SYMBOL
Primary Road	▬▬▬▬▬▬
Other Road	▬▬▬▬▬▬
RDV Trail, Stairway, Alley, Walkway, or Ferry	▬▬▬▬▬▬
Railroad	▬▬▬▬▬▬
Pipeline or Power Line	▬▬▬▬▬▬
Ridge or Fence	▬▬▬▬▬▬
Property Line	▬▬▬▬▬▬
Nonvisible Boundary of Feature Not Elsewhere Classified	▬▬▬▬▬▬
DESCRIPTION	SYMBOL
Water Body	▬▬▬▬▬▬
Military	▬▬▬▬▬▬
National or State Park, Forest, or Recreation Area	▬▬▬▬▬▬
Inset Area	▬▬▬▬▬▬
Outside Subject Area	▬▬▬▬▬▬

Where Puerto Rico, municipio, and/or barrio or barrio-pueblo boundaries coincide, the map shows the boundary symbol for only the highest-ranking of these boundaries.
1 Label color correlates to the fill color.



All legal boundaries and names are as of January 1, 2010. The boundaries shown on this map are for Census Bureau statistical data collection and tabulation purposes only; their depiction and designation for statistical purposes does not constitute a determination of jurisdictional authority or rights of ownership or entitlement.
Geographic Vintage: 2010 Census (reference date: January 1, 2010)
Data Source: U.S. Census Bureau's MAINTIGER database (TAB100172)
Map Created by Geography Division: November 20, 2010

Projection: Albers Equal Area Conic
Datum: NAD 83
Spheroid: GRS 80
1st Standard Parallel: 17 57.21
2nd Standard Parallel: 18 26.45
Central Meridian: -66 35 02
Latitude of Projection's Origin: 17 49 60
False Easting: 0
False Northing: 0



USCENSUSBUREAU

PARENT SHEET 1
Total Sheets: 1
Index Sheets: 0
Parent Sheets: 1
Inset Sheets: 0

NAME: San Lorenzo Municipio (129)
ENTITY TYPE: County or statistically equivalent entity
ST: Puerto Rico (72)

2010 PL VTD/SLD MAP (PARENT) 20472120001