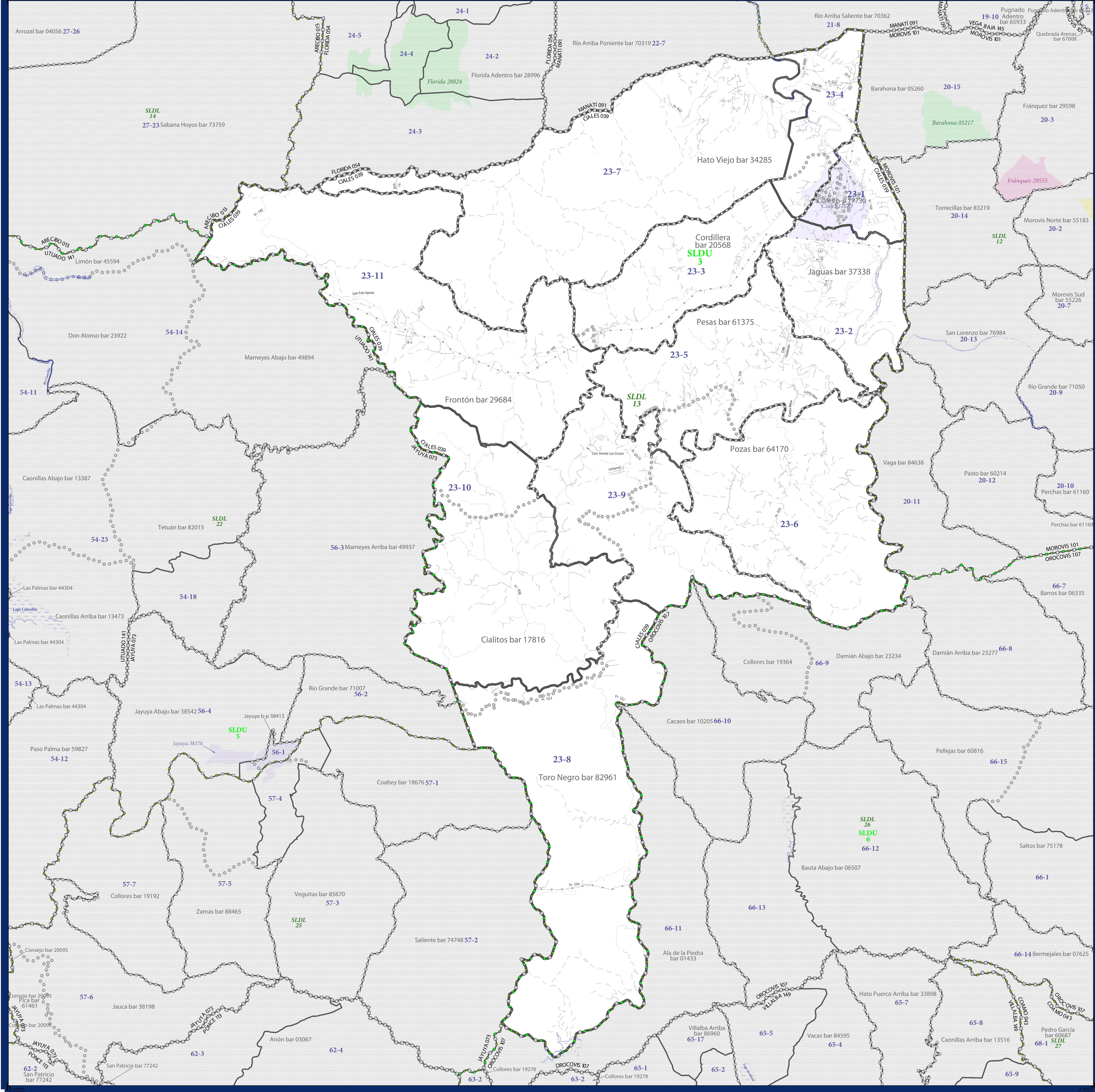


P.L. 94-171 VTD/SLD REFERENCE MAP (2010 CENSUS): Ciales Municipio, PR

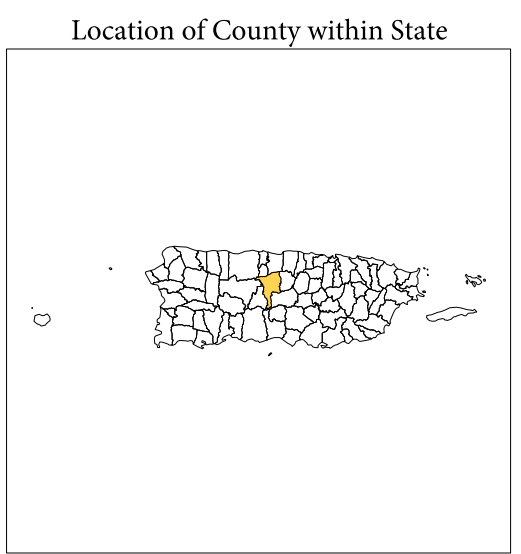


LEGEND

SYMBOL DESCRIPTION	SYMBOL	LABEL STYLE
Puerto Rico	▧▧▧▧▧	PUERTO RICO 72
Municipio	▣▣▣▣▣	FLORIDA 054
Barrio or Barrio-Pueblo	○ ○ ○ ○ ○	Palmas bar 58451
Subbarrio	○ ○ ○ ○ ○	Mercado 53025
Comunidad or Zona Urbana 1	■ ■ ■ ■ ■	Guaynabo 32522
Voting District (VTD)	— — — — —	93-5
State Legislative District - Upper (Senate)	■ ■ ■ ■ ■	SLDU 4
State Legislative District - Lower (House)	▲ ▲ ▲ ▲ ▲	SLDL 26

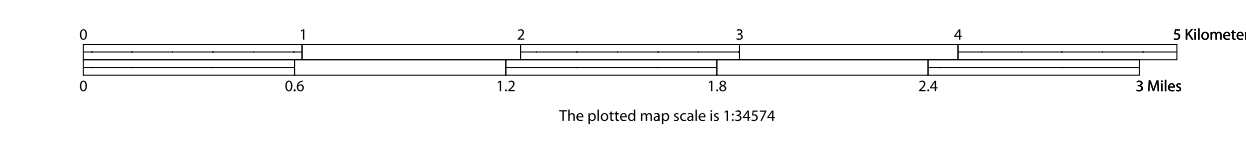
DESCRIPTION	SYMBOL	DESCRIPTION	SYMBOL
Primary Road	— P-52	Water Body	~ Ciales Riego
Other Road	— Ave Las Costas	Military	~ Ft. Allen
Other Road: Alley, Walkway, or Ferry	—	National or State Park, Forest, or Recreation Area	~ Cayo Mata
Railroad	— Culebr Peligoso	Inset Area	A
Pipeline or Power Line	—	Outside Subject Area	~
Ridge or Fence	—	Property Line	—
Nonvisible Boundary or Feature Not Elsewhere Classified	—		

Where Puerto Rico, municipio, and/or barrio or barrio-pueblo boundaries coincide, the map shows the boundary symbol for only the highest-ranking of these boundaries.
 1 Label color correlates to the fill color.



All legal boundaries and names are as of January 1, 2010. The boundaries shown on this map are for Census Bureau statistical data collection and tabulation purposes only; their depiction and designation for statistical purposes does not constitute a determination of jurisdictional authority or rights of ownership or entitlement.
 Geographic: Vintage: 2010 Census (reference date: January 1, 2010)
 Data Source: U.S. Census Bureau's MAINTIGR database (TAB100172)
 Map Created by Geography Division: November 19, 2010

Projection: Albers Equal Area Conic
 Datum: NAD83
 Spheroid: GRS 80
 1st Standard Parallel: 17 57 21
 2nd Standard Parallel: 18 26 45
 Central Meridian: -66 35 02
 Latitude of Projection's Origin: 17 49 60
 False Easting: 0
 False Northing: 0



PARENT SHEET 1
 Total Sheets: 1
 Index Sheets: 0
 Parent Sheets: 1
 Inset Sheets: 0

NAME: Ciales Municipio (039)
 ENTITY TYPE: County or statistically equivalent entity
 ST: Puerto Rico (72)