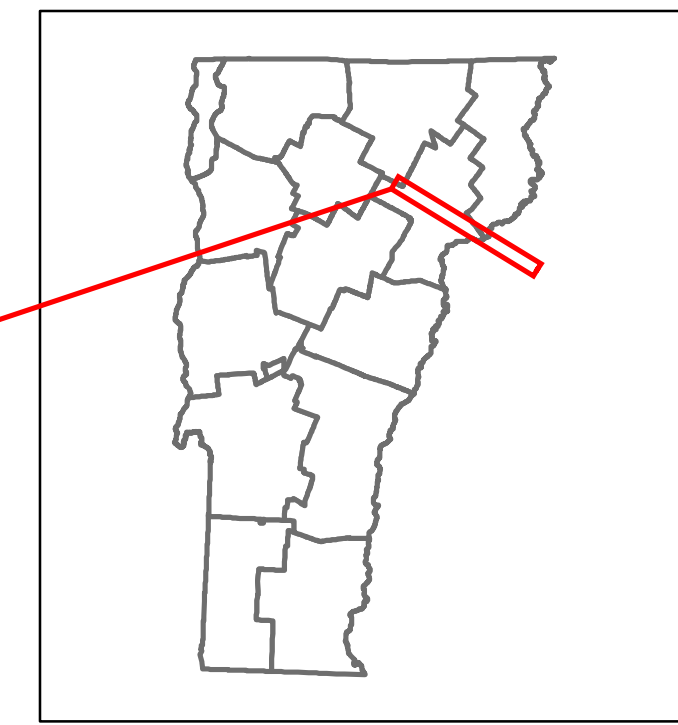




Route Log and Progress Chart

DRAFT
Please Note: Errors and Omissions May Exist.
Contact the VTrans Mapping Section with questions or concerns.

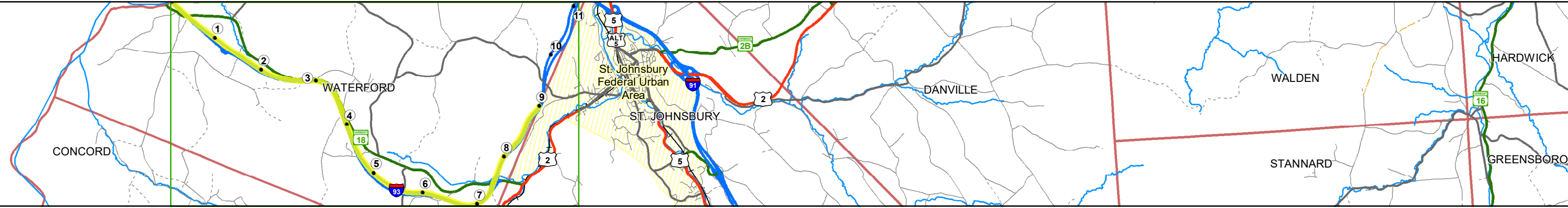
DISTRICT	TOWN	ROUTE
7	ST. JOHNSBURY, WATERFORD	I-93



Base Map



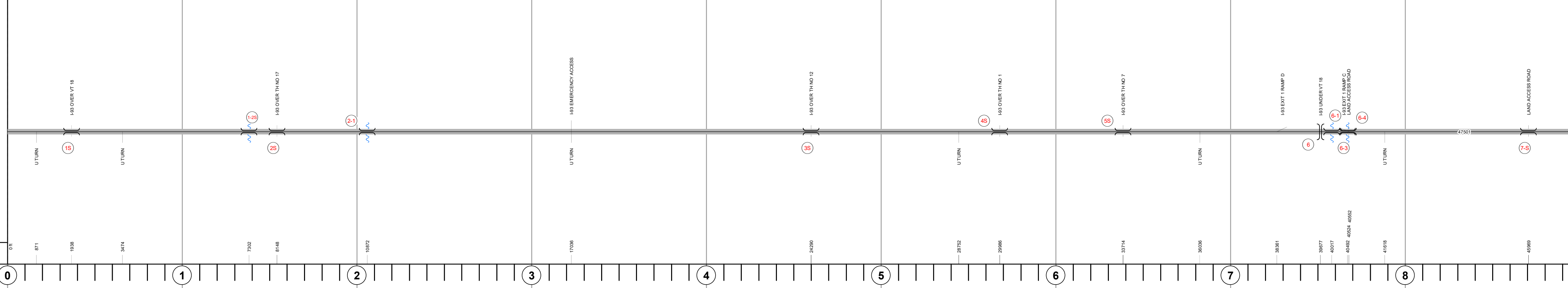
1 in = 1.8 miles



Stick Diagram

- Town Center
- Intersecting State Routes (excl. ramps/approaches)
- Other Intersecting Highways, Ramps, Approaches
- Railroad Crossings
- Primary Structures
- Secondary Structures
- Divided State Highway
- State Highway
- Divided Town Highway
- Town Highway
- Streams (Hydraulic Structure)
- Town Boundary
- Village/UC Boundaries
- District Boundaries
- State/Town Highway Change
- Divided Highway Limits
- Ghost Section Boundary
- Federal Urban Area Limits

Scale: 1 INCH = 2,000 FEET



Road Widths																			
Travellane																			
Roadway																			
Lane Count																			
Base																			
Subbase																			
Curves																			
Grades																			
Guardrails																			
Rumblestrips																			
Historic Projects																			
Maintenance Garage																			
Speed Zone																			
Functional Class																			
National Highway System																			
Limited Access Highway																			
Customer Service Level																			
Traffic Counters																			
AADT		2018																	
		2017																	
		2016																	
		2015																	
		2014																	
Crash Locations		2018																	
		2017																	
		2016																	
		2015																	
		2014																	

STRUCTURE DESCRIPTIONS

- Bridge 1S:**
Frame - 1982
Structure No. 200093001S03162
Length: 171'
Width: 36.5'
Under Clearance: 14.33'
Facility Carried: I93 ML
Structure Type: STEEL RIGID FRAME
Features Intersected: I93 OVER VT 18
Surface: Bituminous
Maintenance/Ownership: State
- Bridge 6-4:**
Culvert - 1982
Structure No. 30009306-403161
Length: 14'
Under Clearance: 12.0'
Facility Carried: I93
Structure Type: RC BOX
Features Intersected: LAND ACCESS ROAD
Maintenance: State
- Bridge 7-S:**
Culvert - 1982
Structure No. 300093007S03161
Length: 14'
Under Clearance: 12.0'
Facility Carried: I93
Structure Type: RC BOX
Features Intersected: LAND ACCESS ROAD
Maintenance: State
- Culvert 1-2S:**
Culvert - 1982
Structure No. 3000931-2S03161
Length: 6'
Under Clearance: 6.0'
Facility Carried: I93
Structure Type: ACCOMP
Features Intersected: Brook
Maintenance: State
- Bridge 2S:**
Frame - 1982
Structure No. 200093002S03162
Length: 28'
Under Clearance: 13.92'
Facility Carried: I93 ML
Structure Type: CONCRETE BOX CULVERT
Features Intersected: I93 OVER TH NO 17
Maintenance/Ownership: State
- Culvert 2-1:**
Culvert - 1982
Structure No. 30009302-103161
Length: 7'
Under Clearance: 7.0'
Facility Carried: I93
Structure Type: CGMPP
Features Intersected: BROOK
Maintenance: State
- Bridge 3S:**
Stringer/multi-beam or girder - 1982
Structure No. 200093003S03162
Length: 113'
Width: 36.7'
Under Clearance: 14.92'
Facility Carried: I93 ML
Structure Type: WELDED PLATE GIRDER
Features Intersected: I93 OVER TH NO 12
Surface: Bituminous
Maintenance/Ownership: State
- Bridge 4S:**
Frame - 1982
Structure No. 200093004S03162
Length: 28'
Under Clearance: 14.42'
Facility Carried: I93 ML
Structure Type: CONCRETE BOX
Features Intersected: I93 OVER TH NO 1
Maintenance/Ownership: State
- Bridge 5S:**
Stringer/multi-beam or girder - 1982
Structure No. 200093005S03162
Length: 109'
Width: 36.7'
Under Clearance: 15.0'
Facility Carried: I93 ML
Structure Type: WELDED PLATE GIRDER
Features Intersected: I93 OVER TH NO 7
Surface: Bituminous
Maintenance/Ownership: State
- Bridge 6:**
Stringer/multi-beam or girder - 1982
Structure No. 200225000903162
Length: 214'
Facility Carried: VT 18 ML
Structure Type: 2 SP CONT WLD PL GIR
Features Intersected: I93 UNDER VT 18
- Culvert 6-1:**
Culvert - 1982
Structure No. 30009306-103161
Length: 14'
Under Clearance: 7.0'
Facility Carried: I93
Structure Type: RC BOX
Features Intersected: STILES BROOK
Maintenance: State
- Culvert 6-3:**
Culvert - 1982
Structure No. 30009306-303161
Length: 9'
Under Clearance: 7.0'
Facility Carried: I93
Structure Type: RC BOX
Features Intersected: WATER MAIN SLEEVE
Maintenance: State

Historic Projects Unknown Bituminous Concrete Retreatment Bituminous Macadam Resurface Cold Plane and Expressways Bituminous Concrete Reclaimed Base and Bituminous Concrete Skippy Mix Concrete Bituminous Seal Gravel Surface Treated Gravel Plant Mix Reclaimed Base and Bituminous Concrete	Functional Class 1- Interstate System 2- Other 3- Principal Arterial 4- Minor Arterial 5- Major Collector 6- Minor Collector	Curves Left Right Grades Left Right Road Widths (ft) 	Traffic Counters Continuous (CTC) Weigh-In-Motion (WIM) Short-Term, Scheduled Short-Term, Unscheduled AADT (AADT) 	Crash Locations Fatal Injury Property Damage Only Unknown Crash Type High Crash Locations (HCL's) Sections (& Intersections) HCL No. 1-100 (1-10) 101-200 (11-20) 201-300 (21-30) 301-400 (31-40) 401-800 (41-113)	Mileage by Functional Class By Sheet 93-1 1 - Interstate 9.000	Mileage by Town By Sheet ETE - I093-0000S 9.0 of 11.075	DISTRICT 7	TOWN ST. JOHNSBURY, WATERFORD	Date: 12/03/19 1 of 2 TWN mileage: 0.0 to 9.0	ROUTE I-93 ETE mileage: 0.0 to 9.0
---	---	--	---	---	--	---	----------------------	---	--	--